

Data Path : Z:\pestpcbsrv\HPCHEM1\ECD\_L\Data\PL021420\  
 Data File : PL056548.D  
 Signal(s) : Signal #1: ECD1A.ch Signal #2: ECD2B.ch  
 Acq On : 14 Feb 2020 11:36  
 Operator : AJ\MA  
 Sample : PSTDCCC050  
 Misc :  
 ALS Vial : 4 Sample Multiplier: 1

Instrument :  
 ECD\_L  
 ClientSampleId :

Integration File signal 1: autoint1.e  
 Integration File signal 2: autoint2.e  
 Quant Time: Feb 15 03:16:05 2020  
 Quant Method : Z:\pestpcbsrv\HPCHEM1\ECD\_L\methods\PL021220.M  
 Quant Title : GC Extractables  
 QLast Update : Thu Feb 13 05:32:36 2020  
 Response via : Initial Calibration  
 Integrator: ChemStation

Volume Inj. : 1 µl  
 Signal #1 Phase : ZB-MR2 Signal #2 Phase: ZB-MR1  
 Signal #1 Info : 30M x 0.32mm x0.2 Signal #2 Info : 30M x 0.32mm x0.5µm

	Compound	RT#1	RT#2	Resp#1	Resp#2	ng/ml	ng/ml
-----							
System Monitoring Compounds							
1)	SA Tetrachlo...	3.499	4.018	455.4E6	133.9E6	51.610	49.202
28)	SA Decachlor...	8.251	9.093	503.0E6	96424798	52.505	47.272
Target Compounds							
2)	A alpha-BHC	3.937	4.408	790.5E6	202.1E6	51.560	49.623
3)	MA gamma-BHC...	4.222	4.693	752.6E6	186.7E6	53.338	49.134
4)	MA Heptachlor	4.523	5.200	727.0E6	160.0E6	49.951	47.606
5)	MB Aldrin	4.771	5.505	734.1E6	160.1E6	51.514	49.353
6)	B beta-BHC	4.472	4.865	296.0E6	79932622	51.884	55.214
7)	B delta-BHC	4.677	5.082	744.1E6	163.2E6	53.159	55.380
8)	Heptachlo...	5.214	5.892	690.8E6	145.7E6	51.611	52.085
9)	A Endosulfan I	5.554	6.250	648.8E6	134.4E6	51.711	48.349
10)	B gamma-Chl...	5.441	6.127	709.8E6	143.7E6	51.603	49.125
11)	B alpha-Chl...	5.499	6.199	696.4E6	142.5E6	51.130	48.505
12)	B 4,4'-DDE	5.662	6.358	669.8E6	136.5E6	52.674	48.717
13)	MA Dieldrin	5.796	6.507	703.1E6	141.0E6	52.704	48.438
14)	MA Endrin	6.054	6.725	639.8E6	120.3E6	54.624	49.377
15)	B Endosulfa...	6.327	6.936	582.2E6	122.3E6	55.310	48.035
16)	A 4,4'-DDD	6.179	6.850	521.1E6	115.2E6	55.069	50.938
17)	MA 4,4'-DDT	6.419	7.148	516.3E6	101.7E6	54.478	48.146
18)	B Endrin al...	6.495	7.061	501.6E6	101.4E6	52.274	47.631
19)	B Endosulfa...	6.708	7.284	552.4E6	113.2E6	51.891	47.778
20)	A Methoxychlor	6.963	7.609	256.7E6	54970626	52.159	47.858
21)	B Endrin ke...	7.199	7.756	617.8E6	120.9E6	51.662	48.096
22)	Mirex	7.388	8.209	400.0E6	79939977	53.898	49.499
24)	Chlordane-2	0.000	5.505f	0	160.1E6	N.D.	1550.246 #
25)	Chlordane-3	5.441	6.127	709.8E6	143.7E6	540.619	370.783 #
26)	Chlordane-4	5.499	6.199	696.4E6	142.5E6	640.965	313.061 #
27)	Chlordane-5	6.327	0.000	582.2E6	0	1364.179	N.D. #

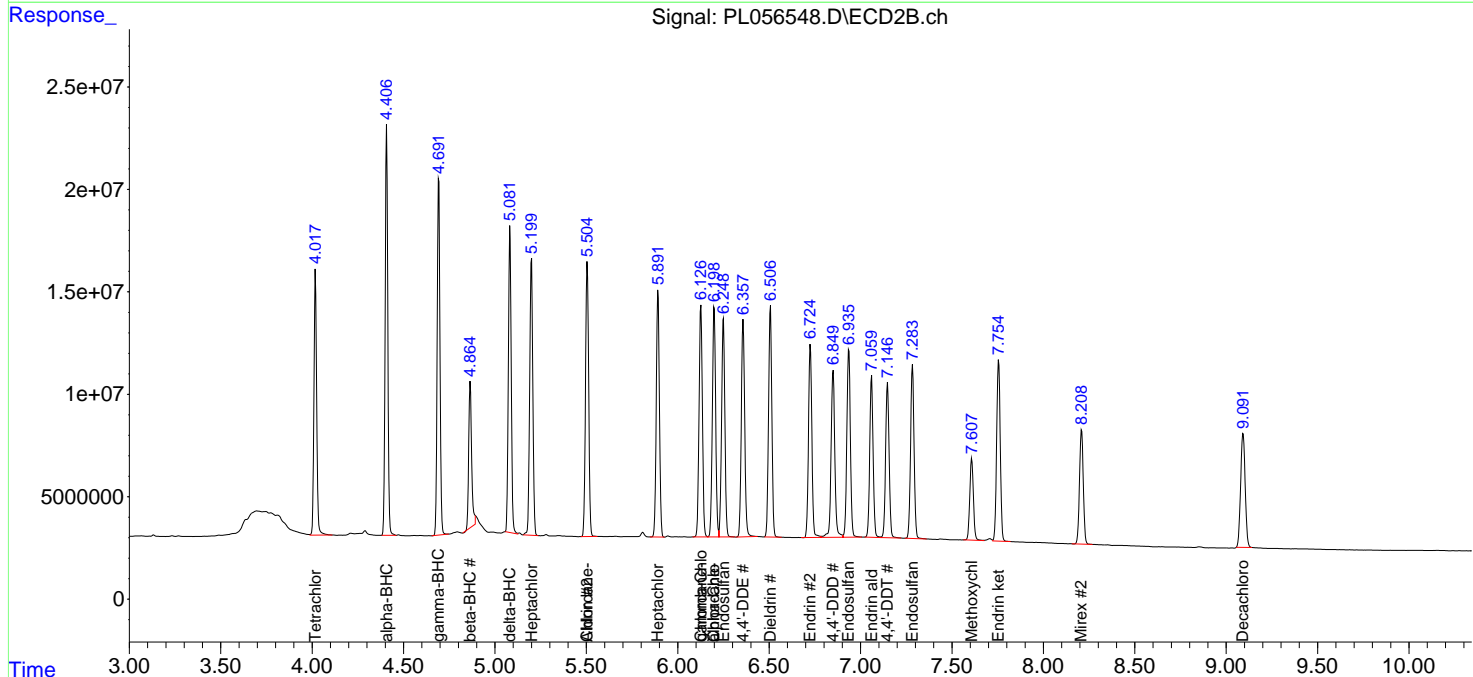
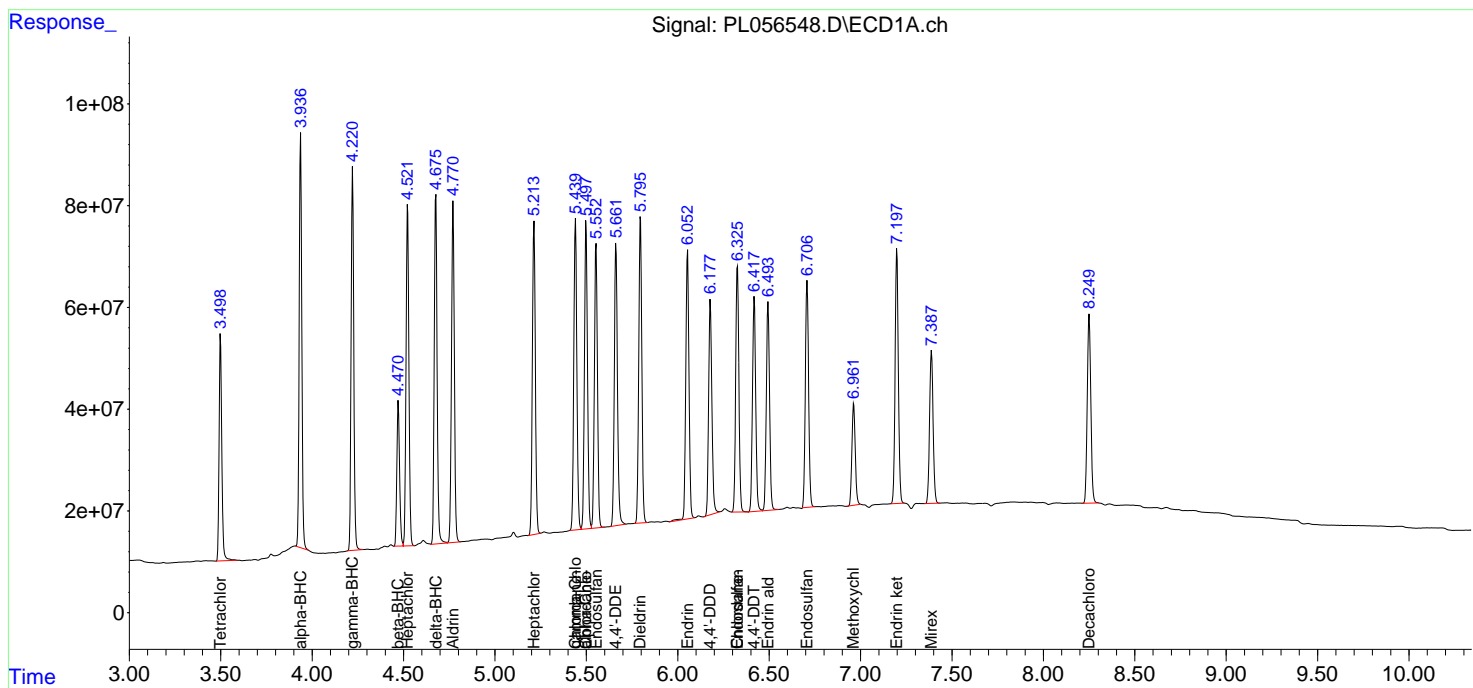
(f)=RT Delta > 1/2 Window (#)=Amounts differ by > 25% (m)=manual int.

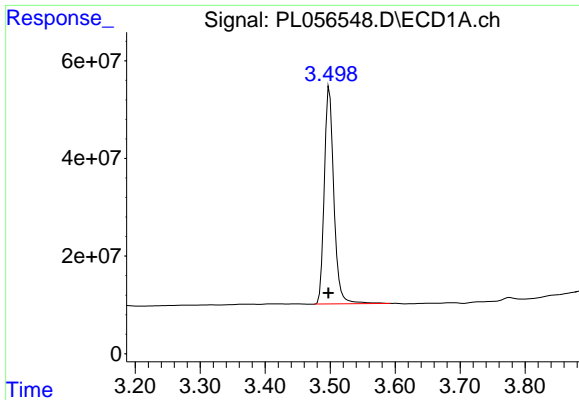
Data Path : Z:\pestpcbsrv\HPCHEM1\ECD\_L\Data\PL021420\  
 Data File : PL056548.D  
 Signal(s) : Signal #1: ECD1A.ch Signal #2: ECD2B.ch  
 Acq On : 14 Feb 2020 11:36  
 Operator : AJ\MA  
 Sample : PSTDCCC050  
 Misc :  
 ALS Vial : 4 Sample Multiplier: 1

Instrument :  
 ECD\_L  
 ClientSampled :

Integration File signal 1: autoint1.e  
 Integration File signal 2: autoint2.e  
 Quant Time: Feb 15 03:16:05 2020  
 Quant Method : Z:\pestpcbsrv\HPCHEM1\ECD\_L\methods\PL021220.M  
 Quant Title : GC Extractables  
 QLast Update : Thu Feb 13 05:32:36 2020  
 Response via : Initial Calibration  
 Integrator: ChemStation

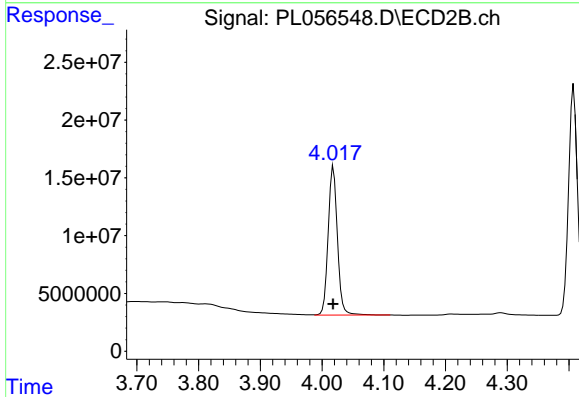
Volume Inj. : 1 µl  
 Signal #1 Phase : ZB-MR2 Signal #2 Phase: ZB-MR1  
 Signal #1 Info : 30M x 0.32mm x0.2 Signal #2 Info : 30M x 0.32mm x0.5µm



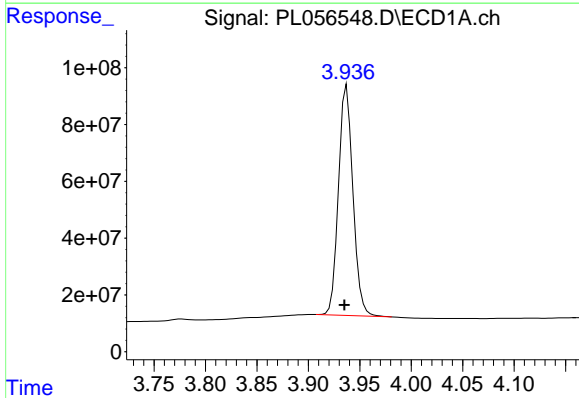


#1 Tetrachloro-m-xylene  
R.T.: 3.499 min  
Delta R.T.: 0.002 min  
Response: 455381381  
Conc: 51.61 ng/ml

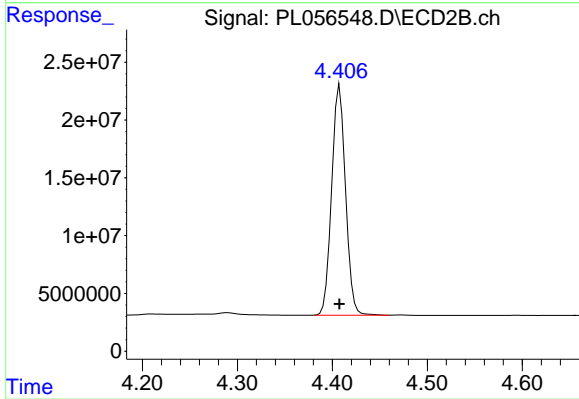
Instrument :  
ECD\_L  
ClientSampleId :



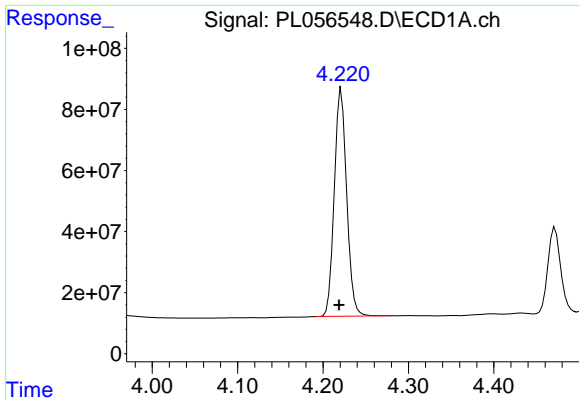
#1 Tetrachloro-m-xylene  
R.T.: 4.018 min  
Delta R.T.: 0.000 min  
Response: 133851778  
Conc: 49.20 ng/ml



#2 alpha-BHC  
R.T.: 3.937 min  
Delta R.T.: 0.002 min  
Response: 790497210  
Conc: 51.56 ng/ml

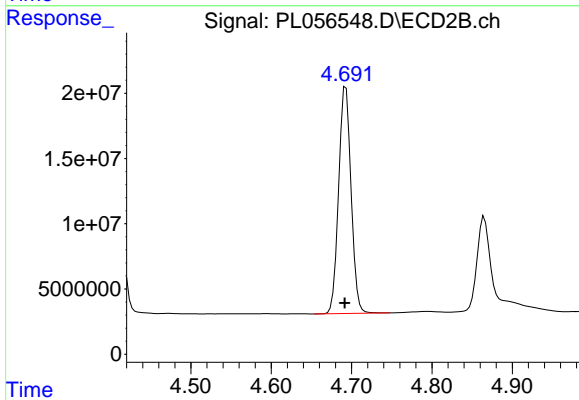


#2 alpha-BHC  
R.T.: 4.408 min  
Delta R.T.: 0.000 min  
Response: 202059069  
Conc: 49.62 ng/ml

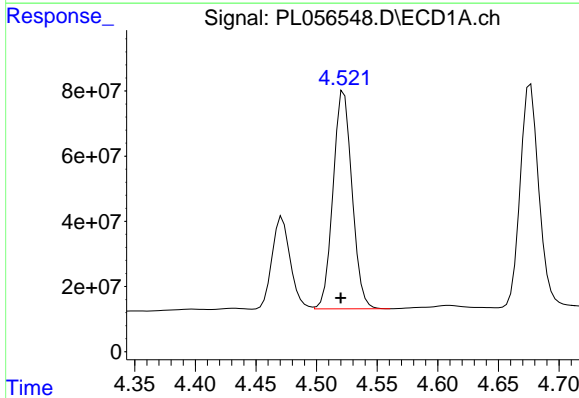


#3 gamma-BHC (Lindane)  
R.T.: 4.222 min  
Delta R.T.: 0.003 min  
Response: 752550629  
Conc: 53.34 ng/ml

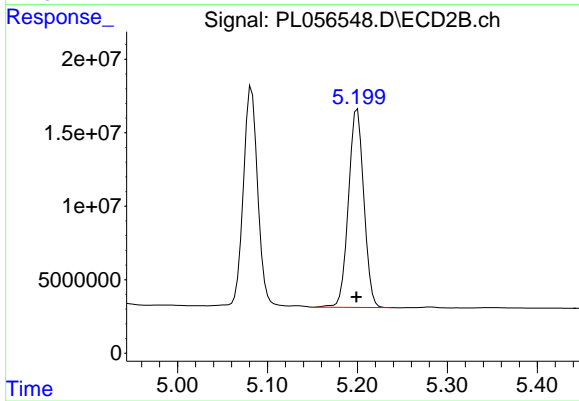
Instrument :  
ECD\_L  
ClientSampled :



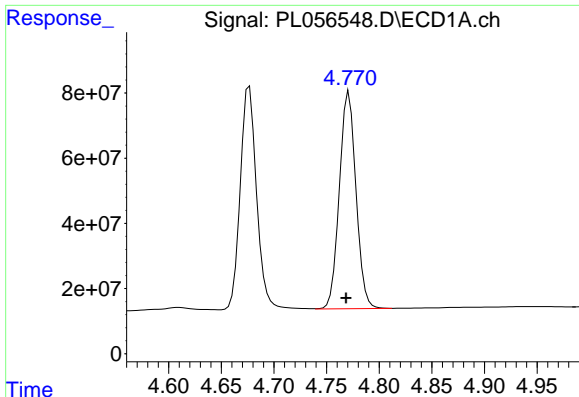
#3 gamma-BHC (Lindane)  
R.T.: 4.693 min  
Delta R.T.: 0.001 min  
Response: 186736449  
Conc: 49.13 ng/ml



#4 Heptachlor  
R.T.: 4.523 min  
Delta R.T.: 0.003 min  
Response: 727044642  
Conc: 49.95 ng/ml

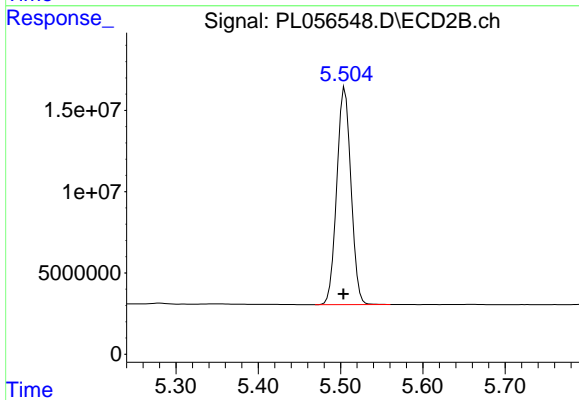


#4 Heptachlor  
R.T.: 5.200 min  
Delta R.T.: 0.001 min  
Response: 160047795  
Conc: 47.61 ng/ml

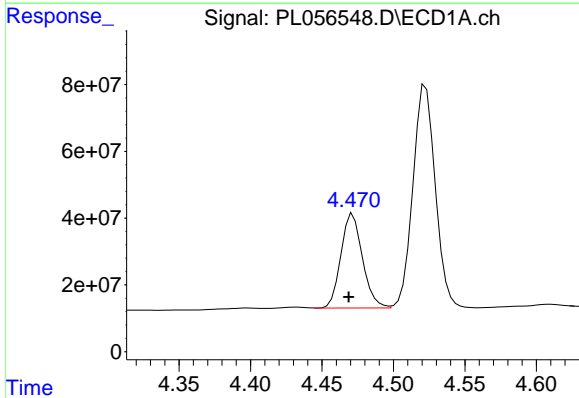


#5 Aldrin  
 R.T.: 4.771 min  
 Delta R.T.: 0.003 min  
 Response: 734125073  
 Conc: 51.51 ng/ml

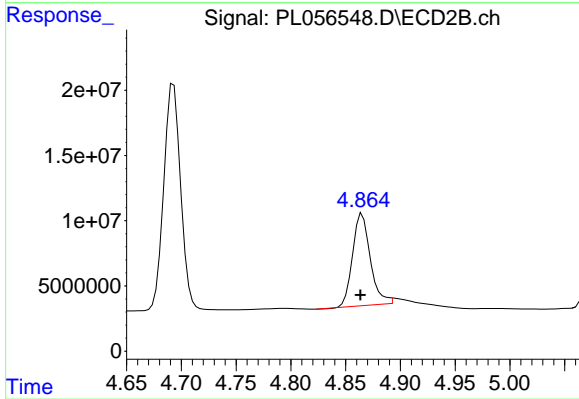
Instrument :  
 ECD\_L  
 ClientSampled :



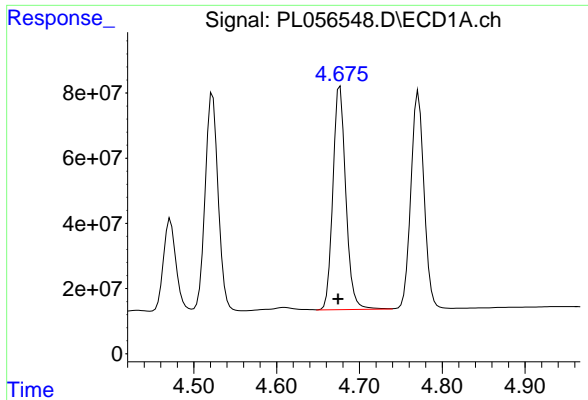
#5 Aldrin  
 R.T.: 5.505 min  
 Delta R.T.: 0.002 min  
 Response: 160050415  
 Conc: 49.35 ng/ml



#6 beta-BHC  
 R.T.: 4.472 min  
 Delta R.T.: 0.003 min  
 Response: 296046708  
 Conc: 51.88 ng/ml

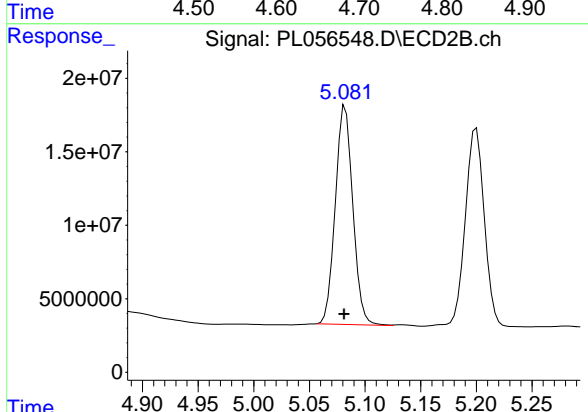


#6 beta-BHC  
 R.T.: 4.865 min  
 Delta R.T.: 0.001 min  
 Response: 79932622  
 Conc: 55.21 ng/ml

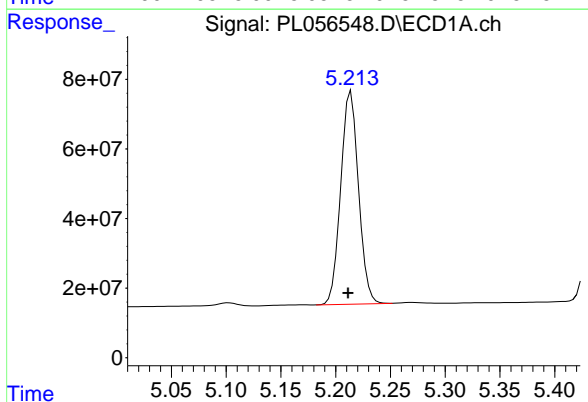


#7 delta-BHC  
 R.T.: 4.677 min  
 Delta R.T.: 0.002 min  
 Response: 744101236  
 Conc: 53.16 ng/ml

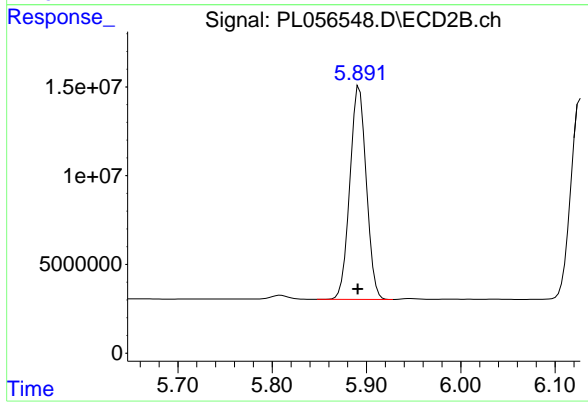
Instrument :  
 ECD\_L  
 ClientSampled :



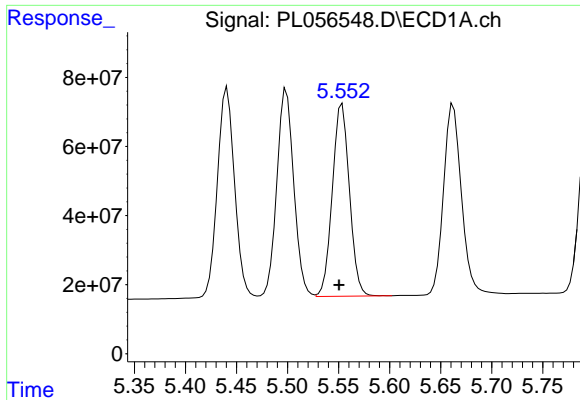
#7 delta-BHC  
 R.T.: 5.082 min  
 Delta R.T.: 0.001 min  
 Response: 163159098  
 Conc: 55.38 ng/ml



#8 Heptachlor epoxide  
 R.T.: 5.214 min  
 Delta R.T.: 0.003 min  
 Response: 690821598  
 Conc: 51.61 ng/ml

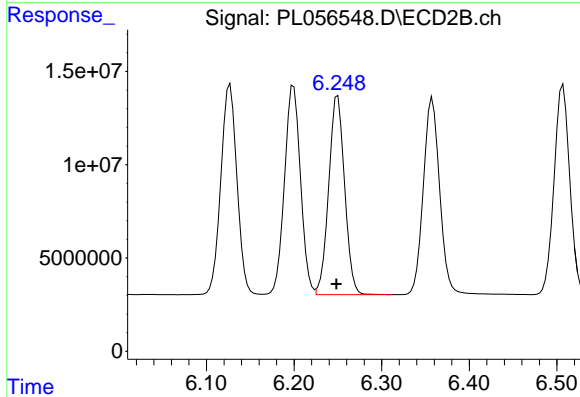


#8 Heptachlor epoxide  
 R.T.: 5.892 min  
 Delta R.T.: 0.002 min  
 Response: 145707717  
 Conc: 52.08 ng/ml

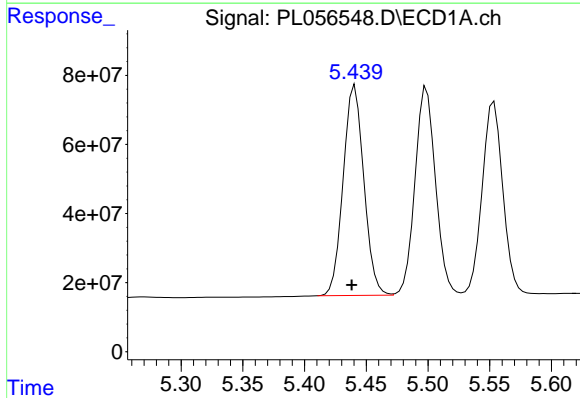


#9 Endosulfan I  
 R.T.: 5.554 min  
 Delta R.T.: 0.003 min  
 Response: 648835861  
 Conc: 51.71 ng/ml

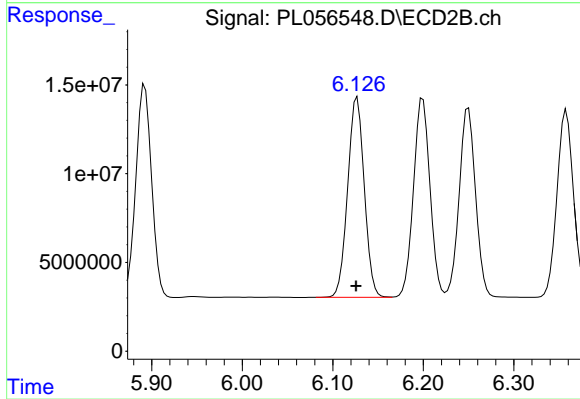
Instrument :  
 ECD\_L  
 ClientSampleId :



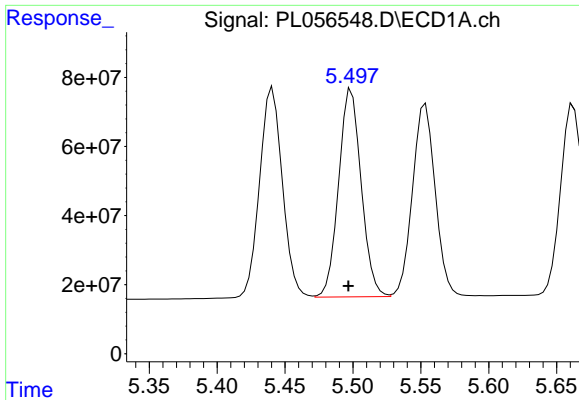
#9 Endosulfan I  
 R.T.: 6.250 min  
 Delta R.T.: 0.002 min  
 Response: 134429638  
 Conc: 48.35 ng/ml



#10 gamma-Chlordane  
 R.T.: 5.441 min  
 Delta R.T.: 0.003 min  
 Response: 709816008  
 Conc: 51.60 ng/ml



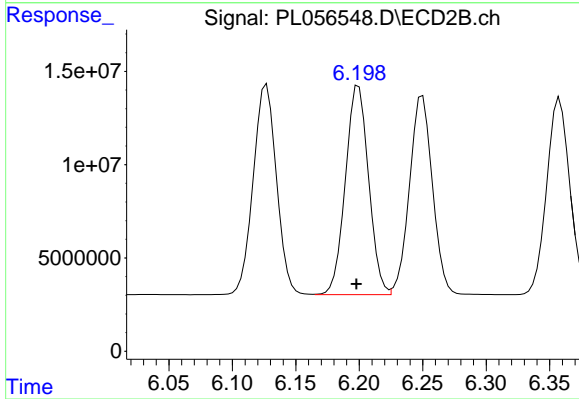
#10 gamma-Chlordane  
 R.T.: 6.127 min  
 Delta R.T.: 0.001 min  
 Response: 143686217  
 Conc: 49.12 ng/ml



#11 alpha-Chlordane

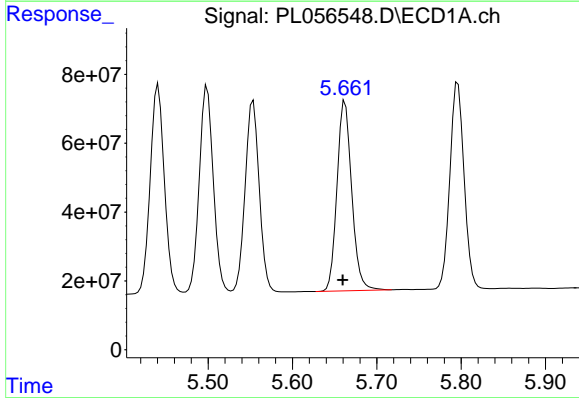
R.T.: 5.499 min  
Delta R.T.: 0.002 min  
Response: 696411627  
Conc: 51.13 ng/ml

Instrument :  
ECD\_L  
ClientSampled :



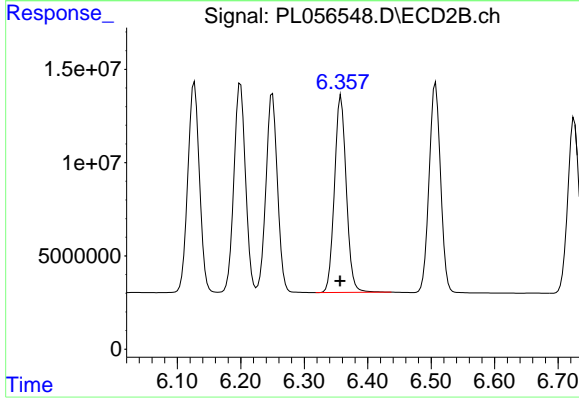
#11 alpha-Chlordane

R.T.: 6.199 min  
Delta R.T.: 0.002 min  
Response: 142473279  
Conc: 48.50 ng/ml



#12 4,4'-DDE

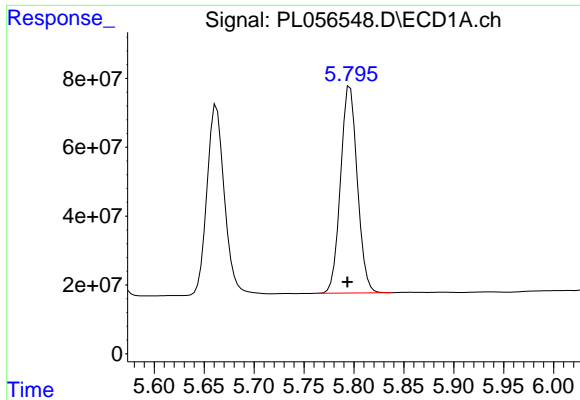
R.T.: 5.662 min  
Delta R.T.: 0.003 min  
Response: 669765258  
Conc: 52.67 ng/ml



#12 4,4'-DDE

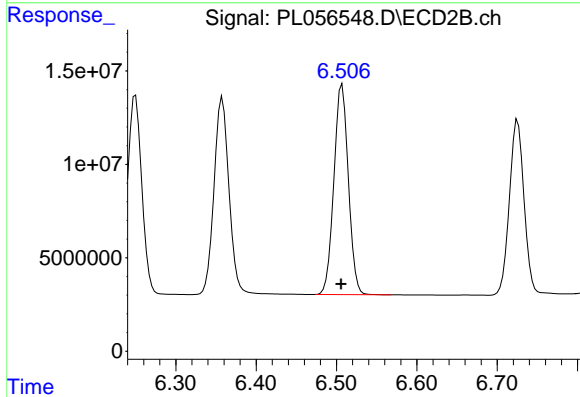
R.T.: 6.358 min  
Delta R.T.: 0.002 min  
Response: 136508029  
Conc: 48.72 ng/ml



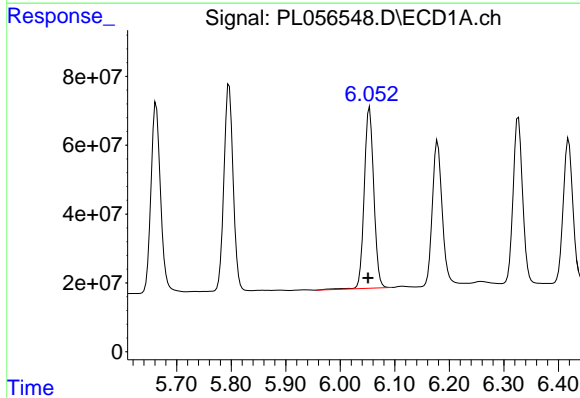


#13 Dieldrin  
 R.T.: 5.796 min  
 Delta R.T.: 0.003 min  
 Response: 703052775  
 Conc: 52.70 ng/ml

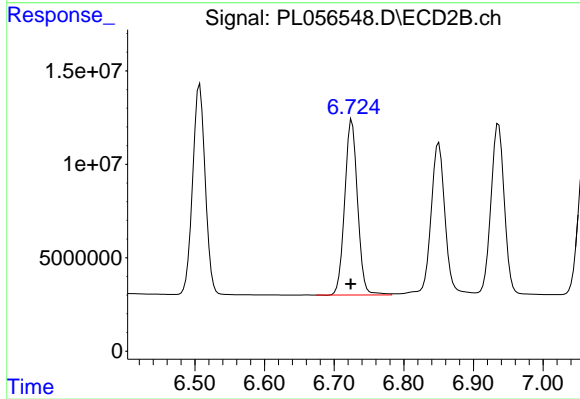
Instrument :  
 ECD\_L  
 ClientSampled :



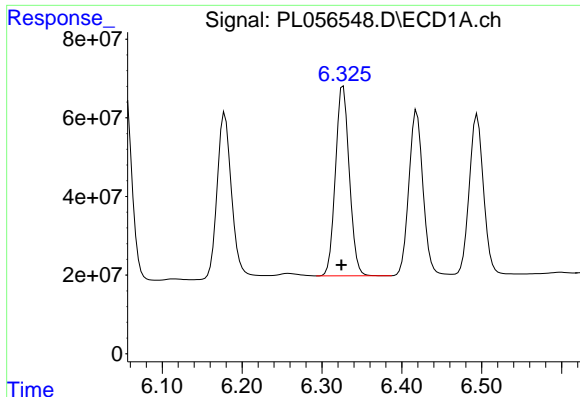
#13 Dieldrin  
 R.T.: 6.507 min  
 Delta R.T.: 0.001 min  
 Response: 140971137  
 Conc: 48.44 ng/ml



#14 Endrin  
 R.T.: 6.054 min  
 Delta R.T.: 0.003 min  
 Response: 639798901  
 Conc: 54.62 ng/ml



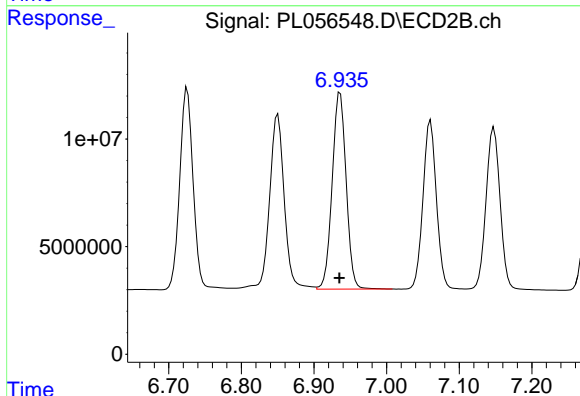
#14 Endrin  
 R.T.: 6.725 min  
 Delta R.T.: 0.002 min  
 Response: 120276012  
 Conc: 49.38 ng/ml



#15 Endosulfan II

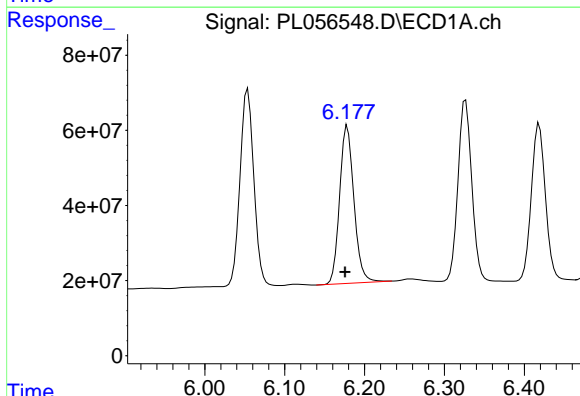
R.T.: 6.327 min  
Delta R.T.: 0.002 min  
Response: 582164002  
Conc: 55.31 ng/ml

Instrument :  
ECD\_L  
ClientSampled :



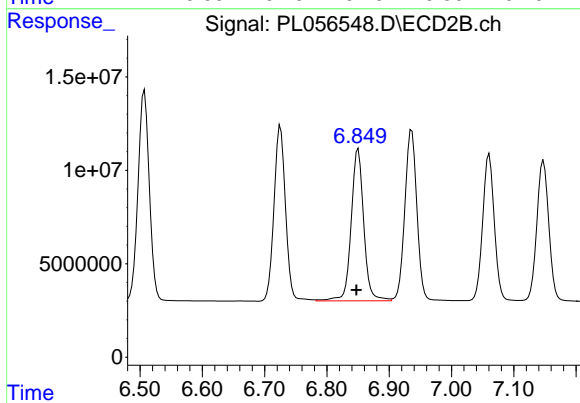
#15 Endosulfan II

R.T.: 6.936 min  
Delta R.T.: 0.001 min  
Response: 122327052  
Conc: 48.04 ng/ml



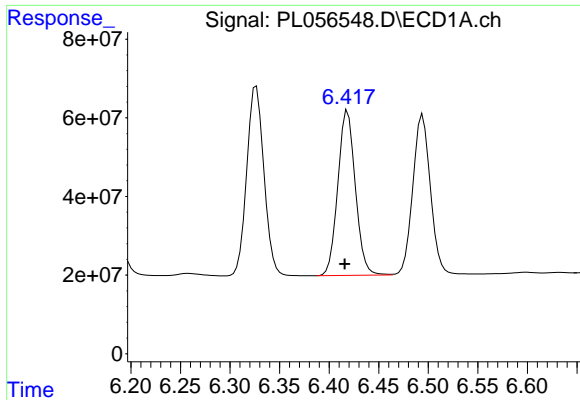
#16 4,4'-DDD

R.T.: 6.179 min  
Delta R.T.: 0.003 min  
Response: 521145839  
Conc: 55.07 ng/ml



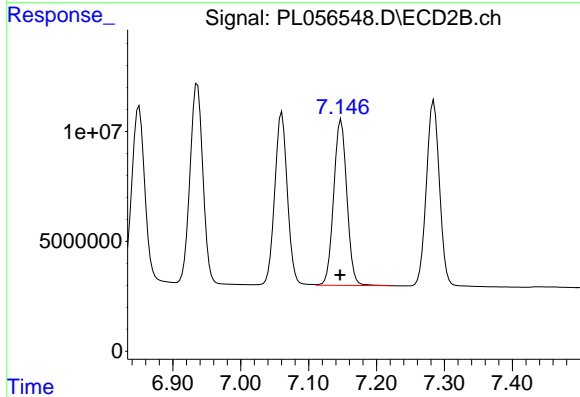
#16 4,4'-DDD

R.T.: 6.850 min  
Delta R.T.: 0.003 min  
Response: 115206128  
Conc: 50.94 ng/ml

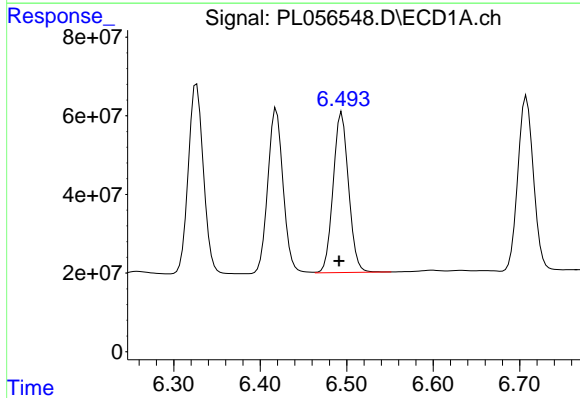


#17 4,4'-DDT  
 R.T.: 6.419 min  
 Delta R.T.: 0.003 min  
 Response: 516298773  
 Conc: 54.48 ng/ml

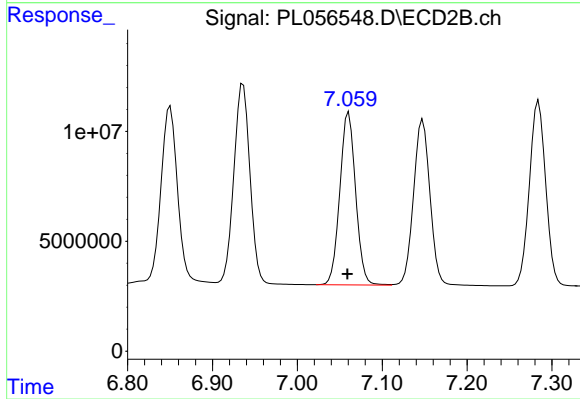
Instrument :  
 ECD\_L  
 ClientSampled :



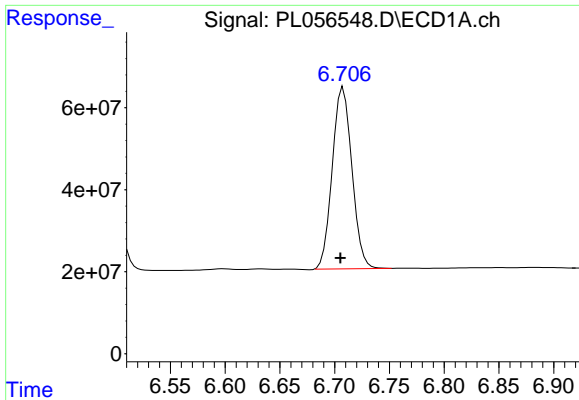
#17 4,4'-DDT  
 R.T.: 7.148 min  
 Delta R.T.: 0.002 min  
 Response: 101704829  
 Conc: 48.15 ng/ml



#18 Endrin aldehyde  
 R.T.: 6.495 min  
 Delta R.T.: 0.003 min  
 Response: 501643755  
 Conc: 52.27 ng/ml



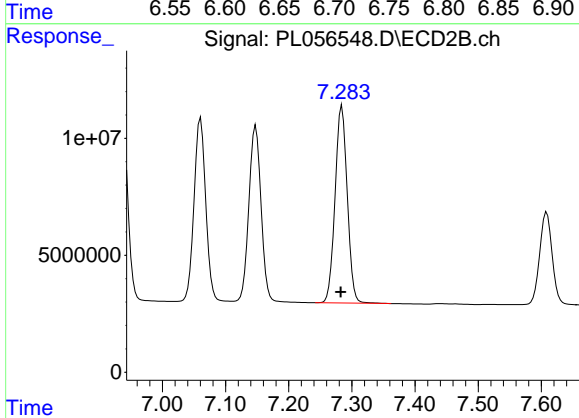
#18 Endrin aldehyde  
 R.T.: 7.061 min  
 Delta R.T.: 0.001 min  
 Response: 101376489  
 Conc: 47.63 ng/ml



#19 Endosulfan Sulfate

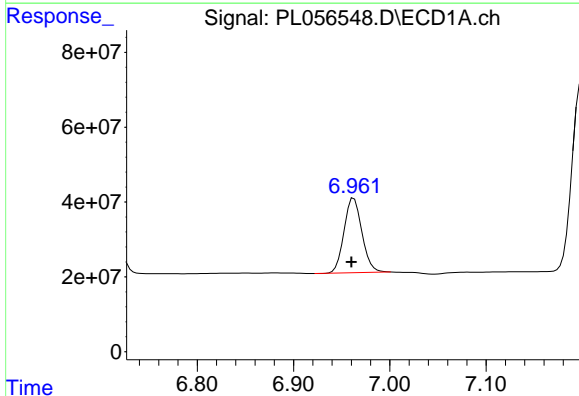
R.T.: 6.708 min  
 Delta R.T.: 0.002 min  
 Response: 552404627  
 Conc: 51.89 ng/ml

Instrument :  
 ECD\_L  
 ClientSampled :



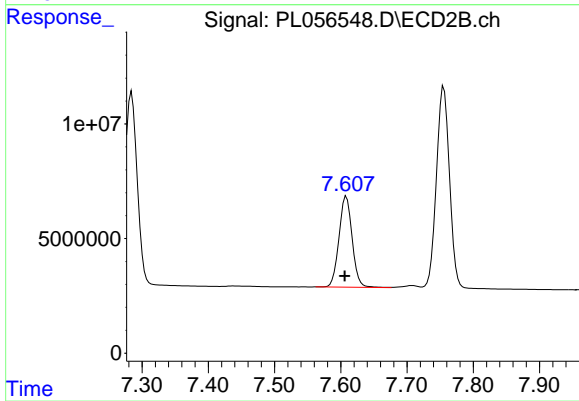
#19 Endosulfan Sulfate

R.T.: 7.284 min  
 Delta R.T.: 0.002 min  
 Response: 113224711  
 Conc: 47.78 ng/ml



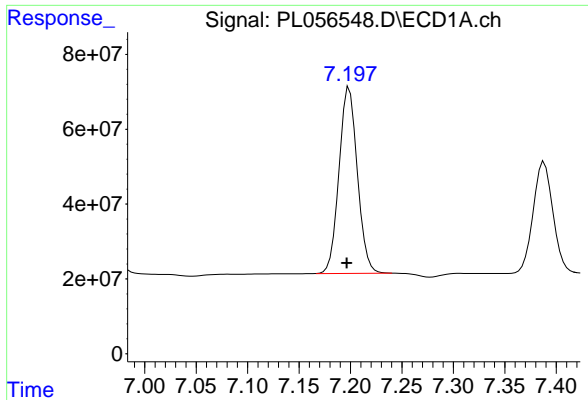
#20 Methoxychlor

R.T.: 6.963 min  
 Delta R.T.: 0.003 min  
 Response: 256659614  
 Conc: 52.16 ng/ml



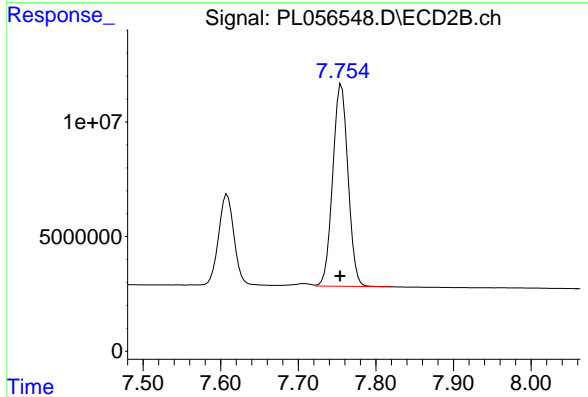
#20 Methoxychlor

R.T.: 7.609 min  
 Delta R.T.: 0.003 min  
 Response: 54970626  
 Conc: 47.86 ng/ml

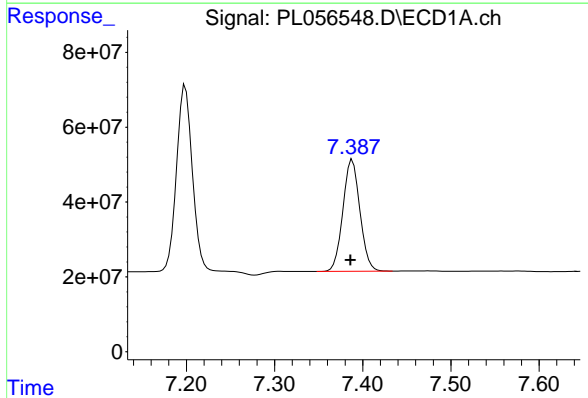


#21 Endrin ketone  
 R.T.: 7.199 min  
 Delta R.T.: 0.002 min  
 Response: 617753760  
 Conc: 51.66 ng/ml

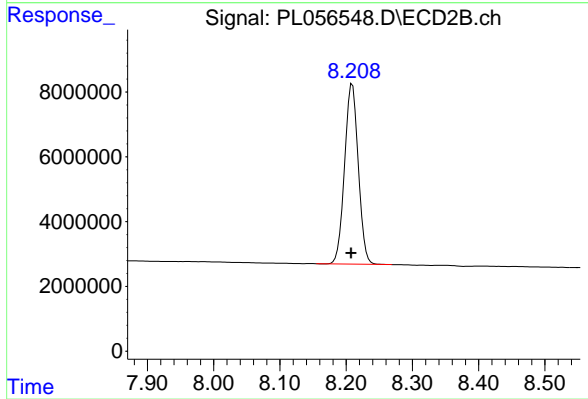
Instrument :  
 ECD\_L  
 ClientSampled :



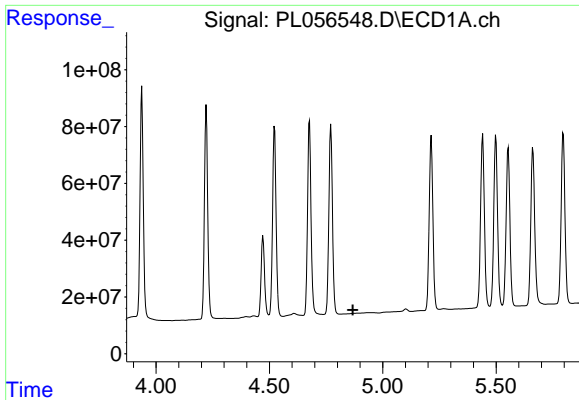
#21 Endrin ketone  
 R.T.: 7.756 min  
 Delta R.T.: 0.002 min  
 Response: 120852779  
 Conc: 48.10 ng/ml



#22 Mirex  
 R.T.: 7.388 min  
 Delta R.T.: 0.002 min  
 Response: 399970910  
 Conc: 53.90 ng/ml



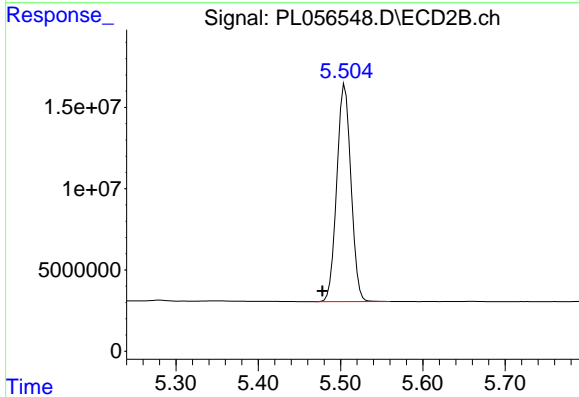
#22 Mirex  
 R.T.: 8.209 min  
 Delta R.T.: 0.002 min  
 Response: 79939977  
 Conc: 49.50 ng/ml



#24 Chlordane-2

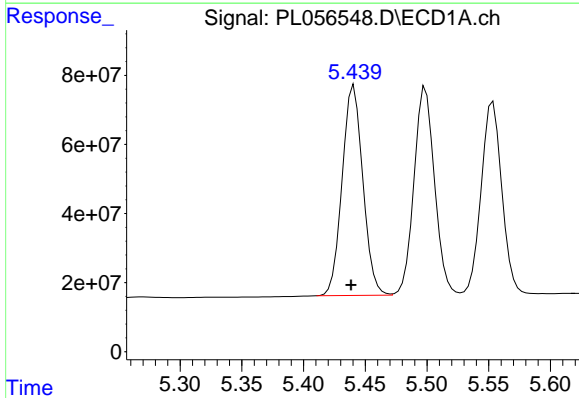
R.T.: 0.000 min  
 Exp R.T.: 4.869 min  
 Response: 0  
 Conc: N.D.

Instrument :  
 ECD\_L  
 ClientSampled :



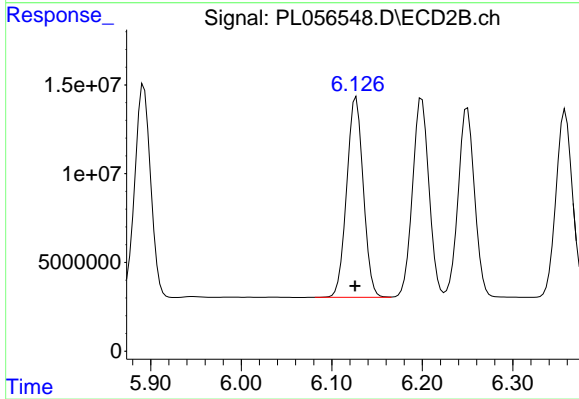
#24 Chlordane-2

R.T.: 5.505 min  
 Delta R.T.: 0.027 min  
 Response: 160050415  
 Conc: 1550.25 ng/ml



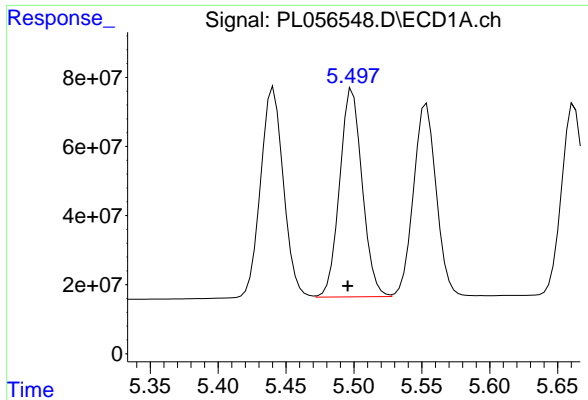
#25 Chlordane-3

R.T.: 5.441 min  
 Delta R.T.: 0.002 min  
 Response: 709816008  
 Conc: 540.62 ng/ml



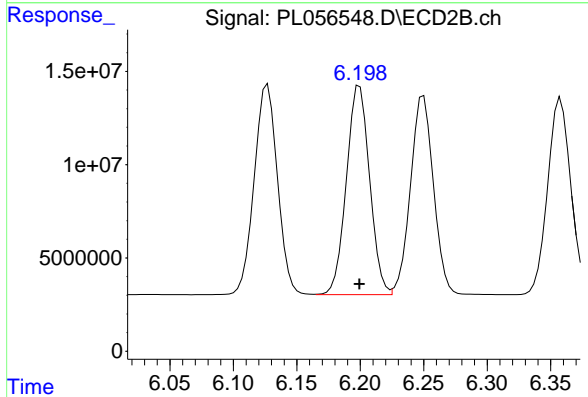
#25 Chlordane-3

R.T.: 6.127 min  
 Delta R.T.: 0.001 min  
 Response: 143686217  
 Conc: 370.78 ng/ml

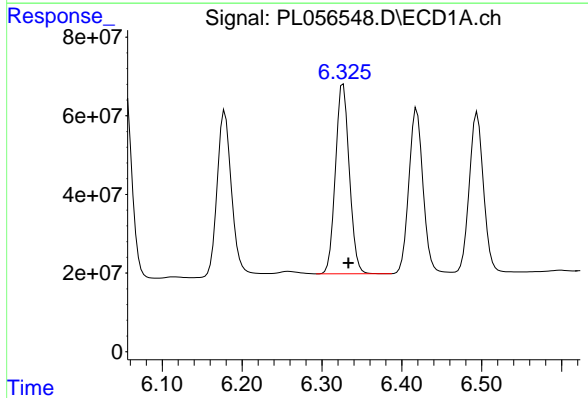


#26 Chlordane-4  
 R.T.: 5.499 min  
 Delta R.T.: 0.003 min  
 Response: 696411627  
 Conc: 640.97 ng/ml

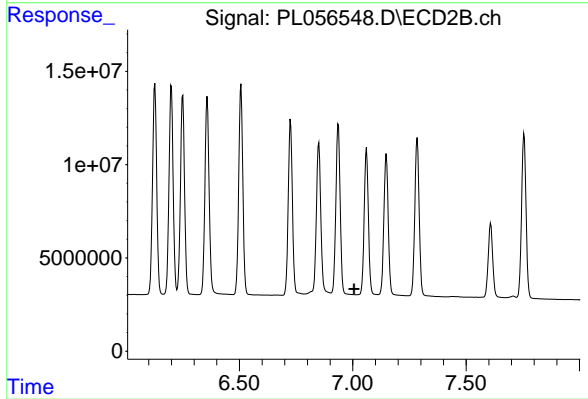
Instrument :  
 ECD\_L  
 ClientSampled :



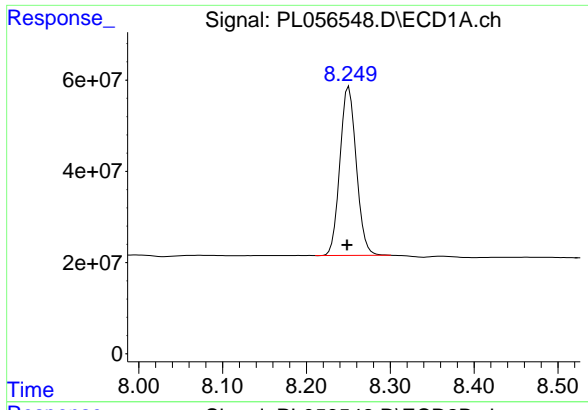
#26 Chlordane-4  
 R.T.: 6.199 min  
 Delta R.T.: 0.000 min  
 Response: 142473279  
 Conc: 313.06 ng/ml



#27 Chlordane-5  
 R.T.: 6.327 min  
 Delta R.T.: -0.007 min  
 Response: 582164002  
 Conc: 1364.18 ng/ml



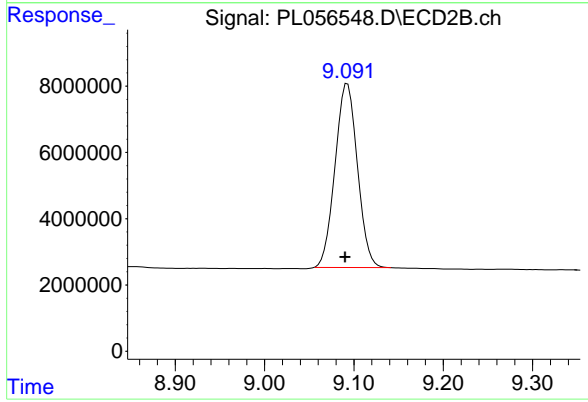
#27 Chlordane-5  
 R.T.: 0.000 min  
 Exp R.T.: 7.006 min  
 Response: 0  
 Conc: N.D.



#28 Decachlorobiphenyl

R.T.: 8.251 min  
Delta R.T.: 0.002 min  
Response: 502955627  
Conc: 52.50 ng/ml

Instrument :  
ECD\_L  
ClientSampleId :



#28 Decachlorobiphenyl

R.T.: 9.093 min  
Delta R.T.: 0.003 min  
Response: 96424798  
Conc: 47.27 ng/ml