

Data Path : Z:\pestpcbsrv\HPCHEM1\ECD_L\Data\PL021420\
 Data File : PL056554.D
 Signal(s) : Signal #1: ECD1A.ch Signal #2: ECD2B.ch
 Acq On : 14 Feb 2020 13:35
 Operator : AJ\MA
 Sample : L1518-01
 Misc :
 ALS Vial : 10 Sample Multiplier: 1

Instrument :
 ECD_L
 ClientSampleId :

Integration File signal 1: autoint1.e
 Integration File signal 2: autoint2.e
 Quant Time: Feb 14 21:53:03 2020
 Quant Method : Z:\pestpcbsrv\HPCHEM1\ECD_L\methods\PL021220.M
 Quant Title : GC Extractables
 QLast Update : Thu Feb 13 05:32:36 2020
 Response via : Initial Calibration
 Integrator: ChemStation

Volume Inj. : 1 µl
 Signal #1 Phase : ZB-MR2 Signal #2 Phase: ZB-MR1
 Signal #1 Info : 30M x 0.32mm x0.2 Signal #2 Info : 30M x 0.32mm x0.5µm

Compound	RT#1	RT#2	Resp#1	Resp#2	ng/ml	ng/ml

System Monitoring Compounds						
1) SA Tetrachlo...	3.498	4.018	115.1E6	36525427	13.046	13.426
28) SA Decachlor...	8.259	9.100	106.4E6	22186334	11.110	10.877
Target Compounds						
4) MA Heptachlor	4.530	0.000	25472973	0	1.750	N.D. #
6) B beta-BHC	4.468	0.000	59881189	0	10.495	N.D. #
7) B delta-BHC	0.000	5.108f	0	9068122	N.D.	3.078 #

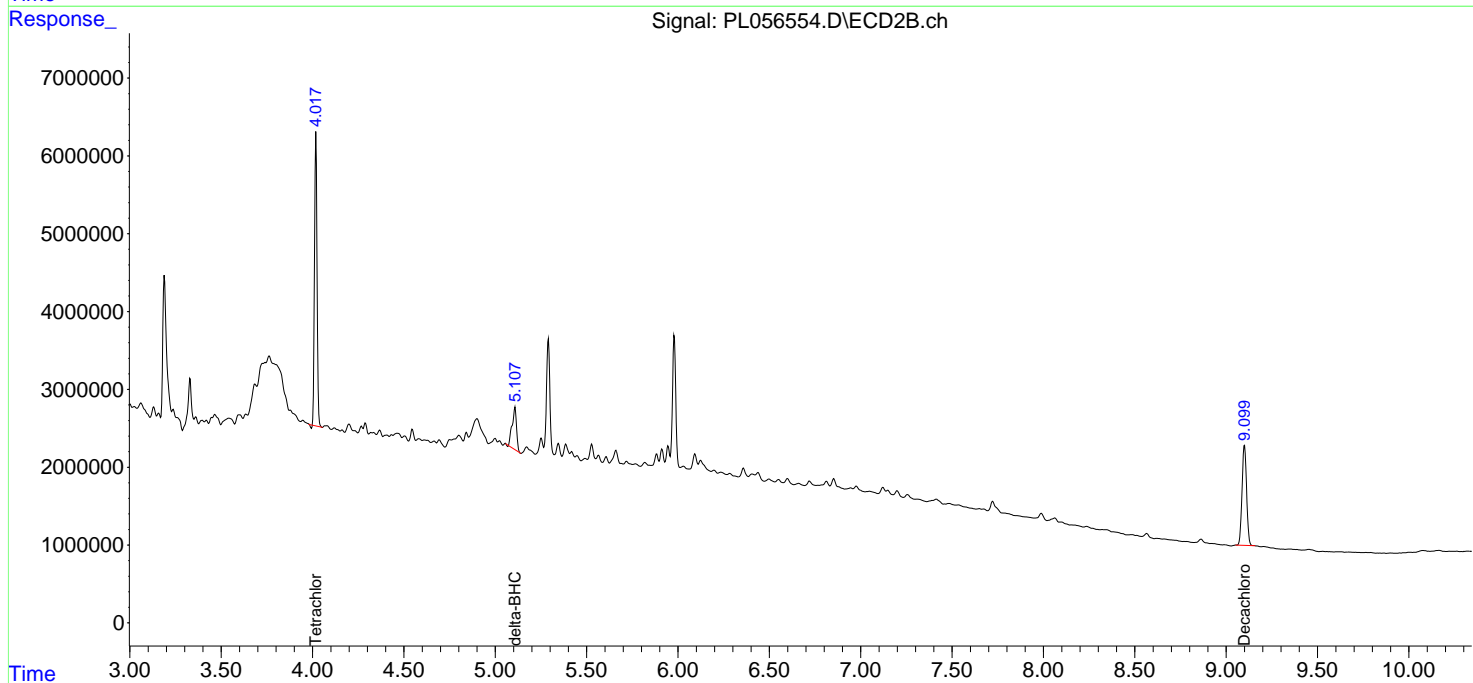
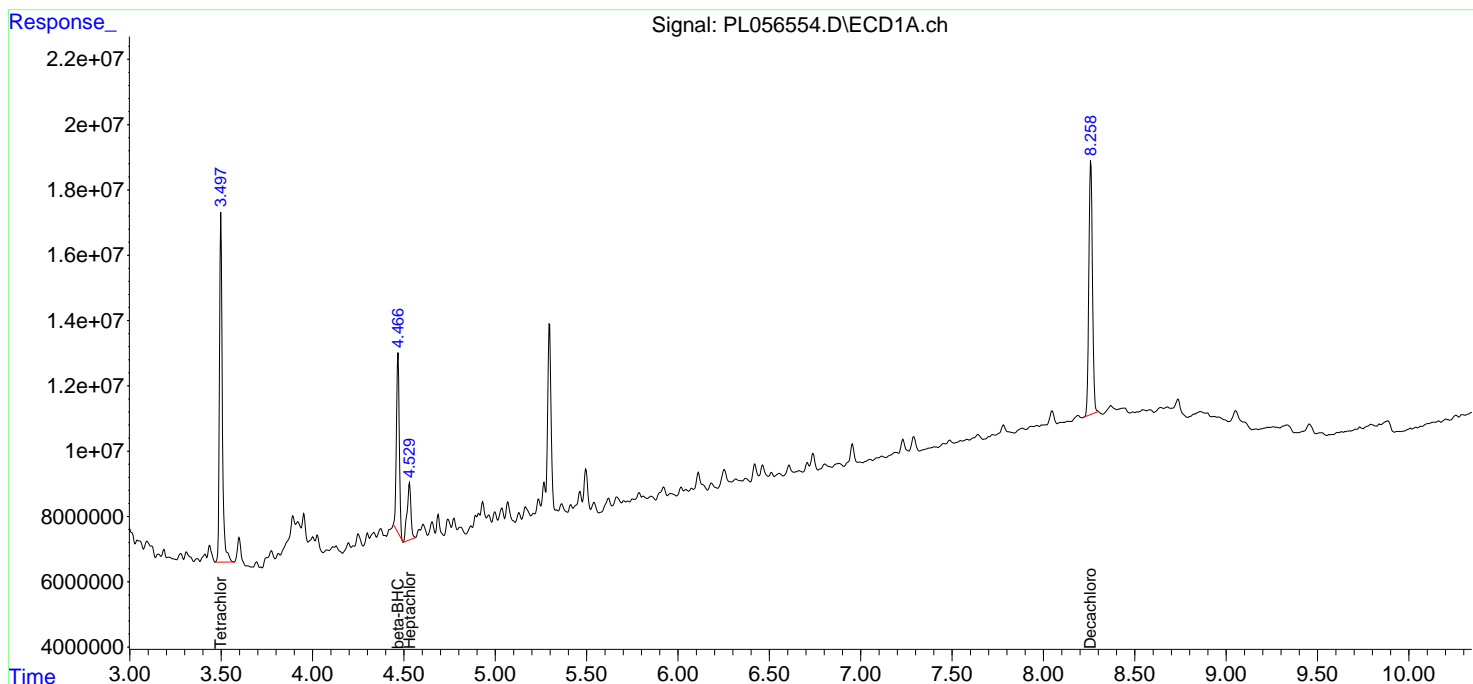
(f)=RT Delta > 1/2 Window (#)=Amounts differ by > 25% (m)=manual int.

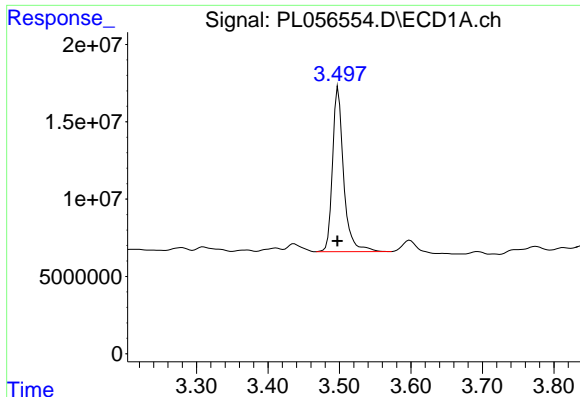
Data Path : Z:\pestpcbsrv\HPCHEM1\ECD_L\Data\PL021420\
 Data File : PL056554.D
 Signal(s) : Signal #1: ECD1A.ch Signal #2: ECD2B.ch
 Acq On : 14 Feb 2020 13:35
 Operator : AJ\MA
 Sample : L1518-01
 Misc :
 ALS Vial : 10 Sample Multiplier: 1

Instrument :
 ECD_L
 ClientSampleId :

Integration File signal 1: autoint1.e
 Integration File signal 2: autoint2.e
 Quant Time: Feb 14 21:53:03 2020
 Quant Method : Z:\pestpcbsrv\HPCHEM1\ECD_L\methods\PL021220.M
 Quant Title : GC Extractables
 QLast Update : Thu Feb 13 05:32:36 2020
 Response via : Initial Calibration
 Integrator: ChemStation

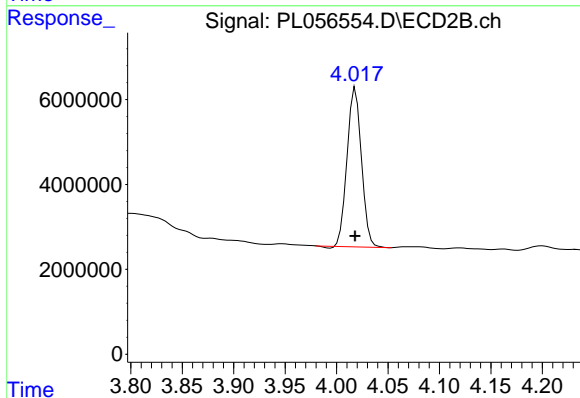
Volume Inj. : 1 µl
 Signal #1 Phase : ZB-MR2 Signal #2 Phase: ZB-MR1
 Signal #1 Info : 30M x 0.32mm x0.2 Signal #2 Info : 30M x 0.32mm x0.5µm



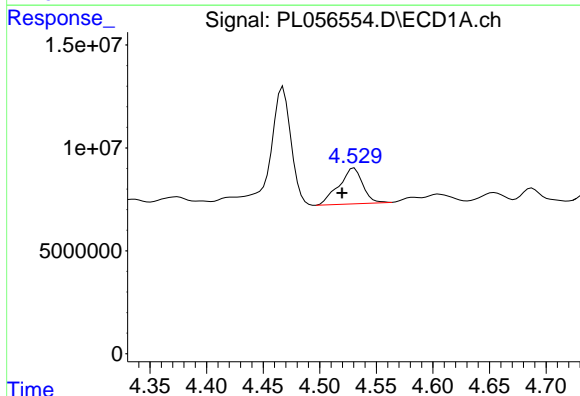


#1 Tetrachloro-m-xylene
 R.T.: 3.498 min
 Delta R.T.: 0.001 min
 Response: 115113212
 Conc: 13.05 ng/ml

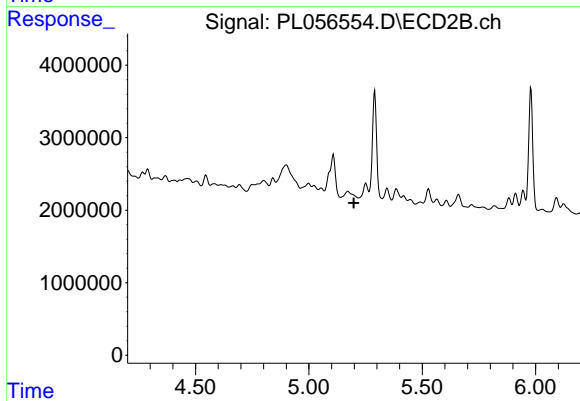
Instrument :
 ECD_L
 ClientSampled :



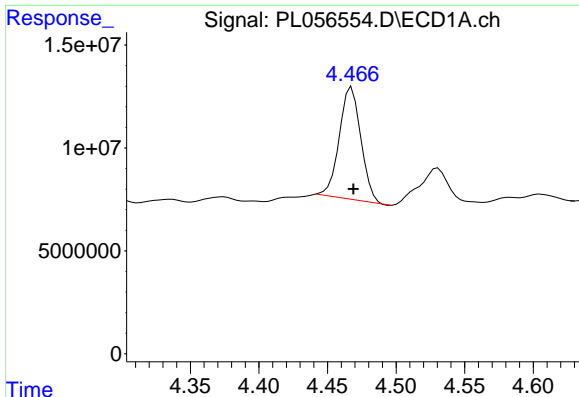
#1 Tetrachloro-m-xylene
 R.T.: 4.018 min
 Delta R.T.: 0.000 min
 Response: 36525427
 Conc: 13.43 ng/ml



#4 Heptachlor
 R.T.: 4.530 min
 Delta R.T.: 0.010 min
 Response: 25472973
 Conc: 1.75 ng/ml



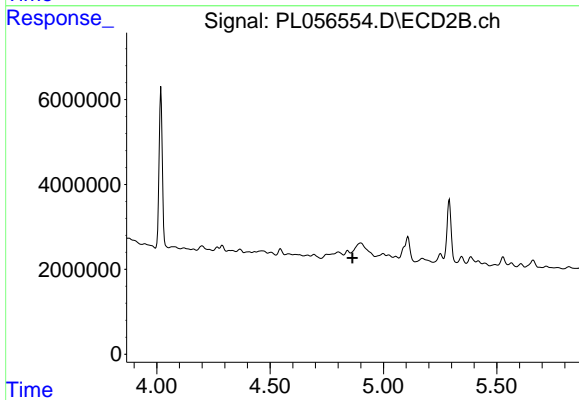
#4 Heptachlor
 R.T.: 0.000 min
 Exp R.T. : 5.199 min
 Response: 0
 Conc: N.D.



#6 beta-BHC

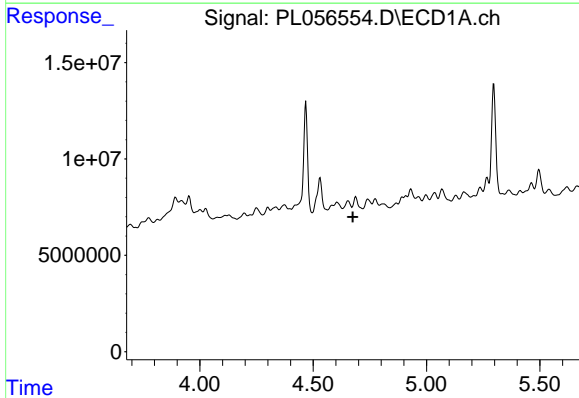
R.T.: 4.468 min
 Delta R.T.: -0.001 min
 Response: 59881189
 Conc: 10.49 ng/ml

Instrument :
 ECD_L
 ClientSampled :



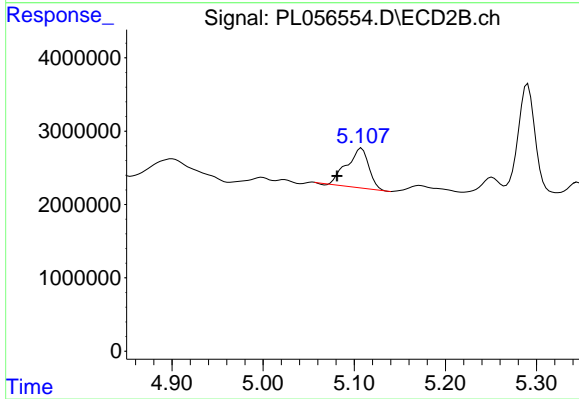
#6 beta-BHC

R.T.: 0.000 min
 Exp R.T. : 4.864 min
 Response: 0
 Conc: N.D.



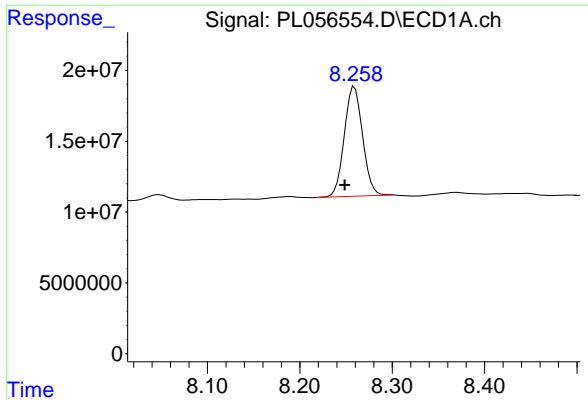
#7 delta-BHC

R.T.: 0.000 min
 Exp R.T. : 4.674 min
 Response: 0
 Conc: N.D.



#7 delta-BHC

R.T.: 5.108 min
 Delta R.T.: 0.027 min
 Response: 9068122
 Conc: 3.08 ng/ml



#28 Decachlorobiphenyl

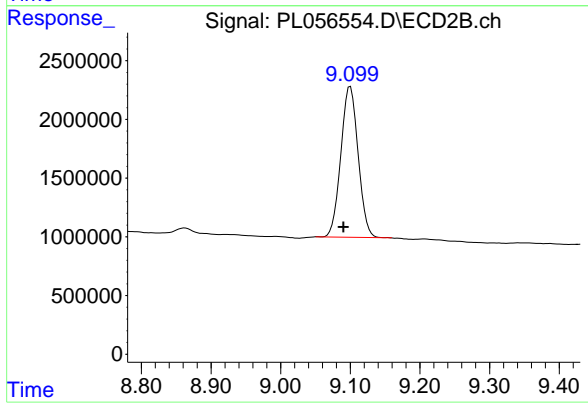
R.T.: 8.259 min

Delta R.T.: 0.010 min

Response: 106421706

Conc: 11.11 ng/ml

Instrument :
ECD_L
ClientSampleId :



#28 Decachlorobiphenyl

R.T.: 9.100 min

Delta R.T.: 0.010 min

Response: 22186334

Conc: 10.88 ng/ml