

Data Path : Z:\pestpcbsrv\HPCHEM1\ECD\_L\Data\PL021420\  
 Data File : PL056555.D  
 Signal(s) : Signal #1: ECD1A.ch Signal #2: ECD2B.ch  
 Acq On : 14 Feb 2020 13:49  
 Operator : AJ\MA  
 Sample : PB126822BL  
 Misc :  
 ALS Vial : 11 Sample Multiplier: 1

Instrument :  
 ECD\_L  
 ClientSampleId :

Integration File signal 1: autoint1.e  
 Integration File signal 2: autoint2.e  
 Quant Time: Feb 14 21:53:12 2020  
 Quant Method : Z:\pestpcbsrv\HPCHEM1\ECD\_L\methods\PL021220.M  
 Quant Title : GC Extractables  
 QLast Update : Thu Feb 13 05:32:36 2020  
 Response via : Initial Calibration  
 Integrator: ChemStation

Volume Inj. : 1 µl  
 Signal #1 Phase : ZB-MR2 Signal #2 Phase: ZB-MR1  
 Signal #1 Info : 30M x 0.32mm x0.2 Signal #2 Info : 30M x 0.32mm x0.5µm

Compound	RT#1	RT#2	Resp#1	Resp#2	ng/ml	ng/ml
-----						
System Monitoring Compounds						
1) SA Tetrachlo...	3.497	4.020	174.8E6	44182497	19.815	16.241
28) SA Decachlor...	8.249	9.089	171.4E6	42802457	17.890	20.984

Target Compounds

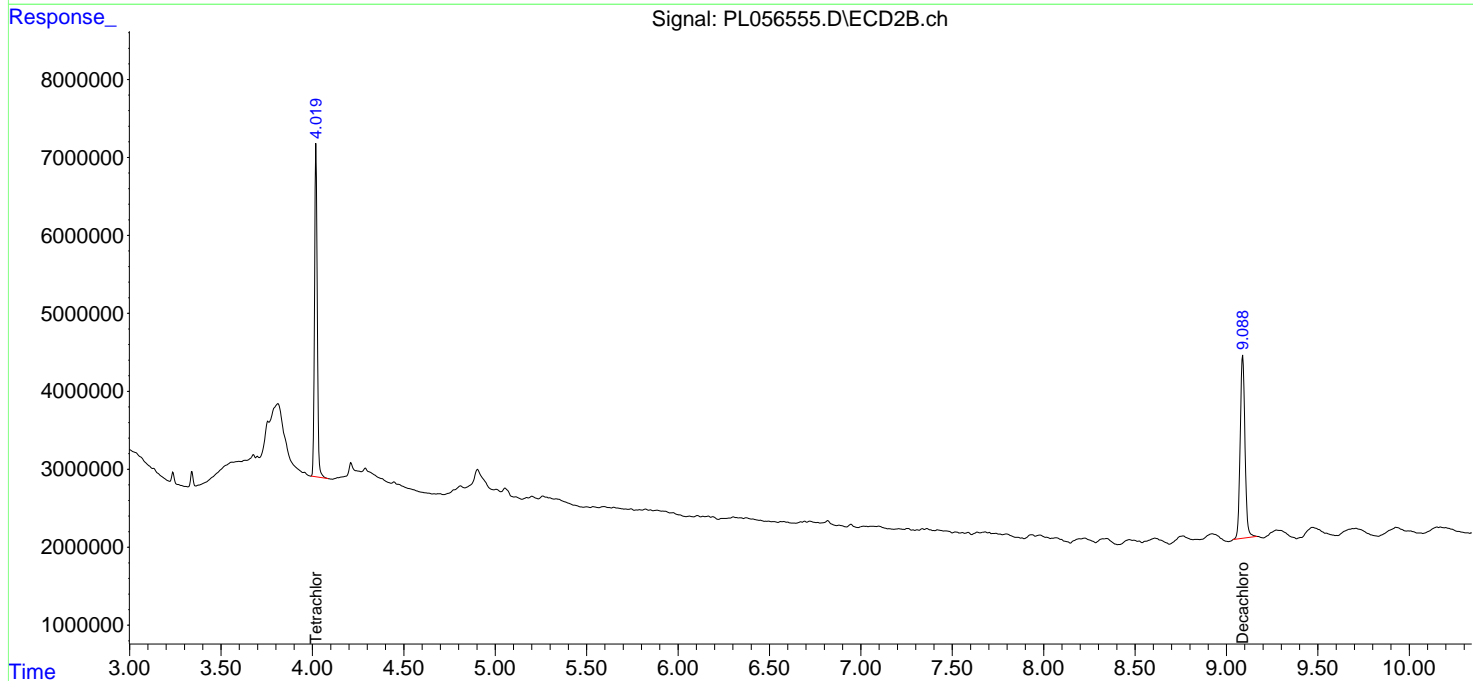
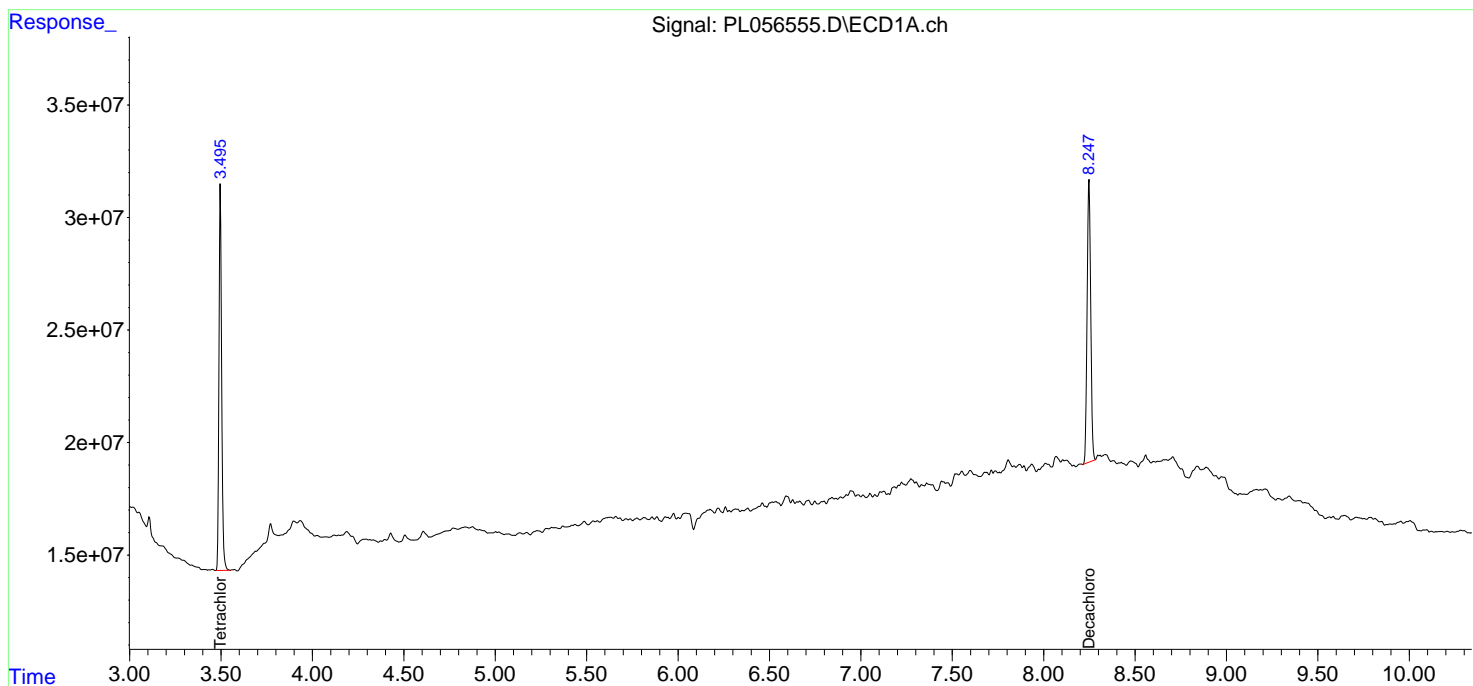
(f)=RT Delta > 1/2 Window (#)=Amounts differ by > 25% (m)=manual int.

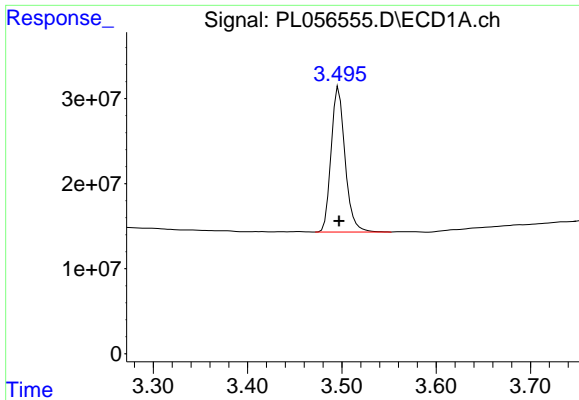
Data Path : Z:\pestpcbsrv\HPCHEM1\ECD\_L\Data\PL021420\  
 Data File : PL056555.D  
 Signal(s) : Signal #1: ECD1A.ch Signal #2: ECD2B.ch  
 Acq On : 14 Feb 2020 13:49  
 Operator : AJ\MA  
 Sample : PB126822BL  
 Misc :  
 ALS Vial : 11 Sample Multiplier: 1

Instrument :  
 ECD\_L  
 ClientSampled :

Integration File signal 1: autoint1.e  
 Integration File signal 2: autoint2.e  
 Quant Time: Feb 14 21:53:12 2020  
 Quant Method : Z:\pestpcbsrv\HPCHEM1\ECD\_L\methods\PL021220.M  
 Quant Title : GC Extractables  
 QLast Update : Thu Feb 13 05:32:36 2020  
 Response via : Initial Calibration  
 Integrator: ChemStation

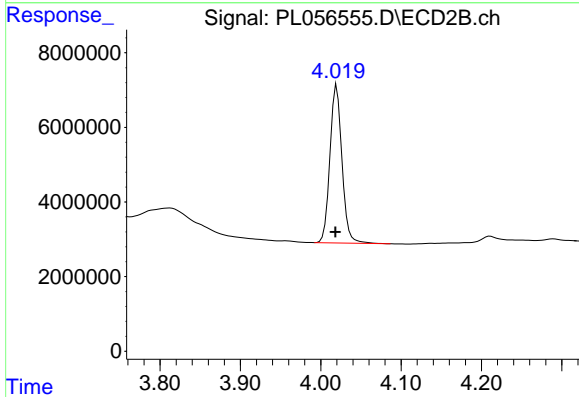
Volume Inj. : 1 µl  
 Signal #1 Phase : ZB-MR2 Signal #2 Phase: ZB-MR1  
 Signal #1 Info : 30M x 0.32mm x0.2 Signal #2 Info : 30M x 0.32mm x0.5µm



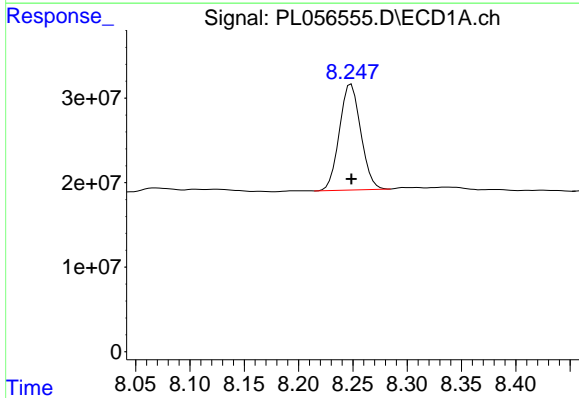


#1 Tetrachloro-m-xylene  
 R.T.: 3.497 min  
 Delta R.T.: 0.000 min  
 Response: 174843032  
 Conc: 19.82 ng/ml

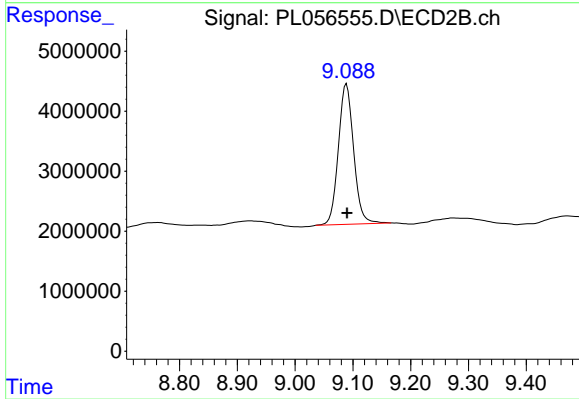
Instrument :  
 ECD\_L  
 ClientSampled :



#1 Tetrachloro-m-xylene  
 R.T.: 4.020 min  
 Delta R.T.: 0.002 min  
 Response: 44182497  
 Conc: 16.24 ng/ml



#28 Decachlorobiphenyl  
 R.T.: 8.249 min  
 Delta R.T.: 0.000 min  
 Response: 171374281  
 Conc: 17.89 ng/ml



#28 Decachlorobiphenyl  
 R.T.: 9.089 min  
 Delta R.T.: 0.000 min  
 Response: 42802457  
 Conc: 20.98 ng/ml