

Data Path : Z:\pestpcbsrv\HPCHEM1\ECD\_L\Data\PL021420\  
 Data File : PL056569.D  
 Signal(s) : Signal #1: ECD1A.ch Signal #2: ECD2B.ch  
 Acq On : 14 Feb 2020 17:06  
 Operator : AJ\MA  
 Sample : PSTDCCC050  
 Misc :  
 ALS Vial : 4 Sample Multiplier: 1

Instrument :  
 ECD\_L  
 ClientSampleId :

Integration File signal 1: autoint1.e  
 Integration File signal 2: autoint2.e  
 Quant Time: Feb 14 21:56:03 2020  
 Quant Method : Z:\pestpcbsrv\HPCHEM1\ECD\_L\methods\PL021220.M  
 Quant Title : GC Extractables  
 QLast Update : Thu Feb 13 05:32:36 2020  
 Response via : Initial Calibration  
 Integrator: ChemStation

Volume Inj. : 1 µl  
 Signal #1 Phase : ZB-MR2 Signal #2 Phase: ZB-MR1  
 Signal #1 Info : 30M x 0.32mm x0.2 Signal #2 Info : 30M x 0.32mm x0.5µm

	Compound	RT#1	RT#2	Resp#1	Resp#2	ng/ml	ng/ml
-----							
System Monitoring Compounds							
1)	SA Tetrachlo...	3.496	4.019	454.1E6	135.3E6	51.468	49.735
28)	SA Decachlor...	8.247	9.089	472.6E6	97492060	49.332	47.796
Target Compounds							
2)	A alpha-BHC	3.935	4.408	786.9E6	204.7E6	51.323	50.277
3)	MA gamma-BHC...	4.218	4.693	736.9E6	189.6E6	52.227	49.895
4)	MA Heptachlor	4.519	5.199	716.8E6	159.5E6	49.245	47.435
5)	MB Aldrin	4.768	5.504	732.7E6	161.2E6	51.414	49.699
6)	B beta-BHC	4.468	4.865	294.8E6	77371664	51.661	53.445
7)	B delta-BHC	4.674	5.082	742.0E6	170.3E6	53.010	57.812
8)	Heptachlo...	5.210	5.891	669.8E6	148.2E6	50.043	52.992
9)	A Endosulfan I	5.550	6.248	625.8E6	134.7E6	49.875	48.437
10)	B gamma-Chl...	5.437	6.126	679.6E6	144.1E6	49.409	49.281
11)	B alpha-Chl...	5.495	6.198	667.4E6	142.7E6	49.002	48.599
12)	B 4,4'-DDE	5.659	6.357	645.3E6	136.9E6	50.750	48.841
13)	MA Dieldrin	5.793	6.506	673.0E6	141.1E6	50.455	48.497
14)	MA Endrin	6.050	6.724	596.5E6	118.4E6	50.929	48.612
15)	B Endosulfa...	6.324	6.934	559.3E6	121.7E6	53.137	47.799
16)	A 4,4'-DDD	6.175	6.848	496.4E6	111.9E6	52.455	49.498
17)	MA 4,4'-DDT	6.415	7.146	485.7E6	100.4E6	51.249	47.536
18)	B Endrin al...	6.491	7.059	474.1E6	101.2E6	49.402	47.544
19)	B Endosulfa...	6.704	7.282	519.9E6	113.1E6	48.841	47.707
20)	A Methoxychlor	6.959	7.606	246.4E6	53811451	50.075	46.849
21)	B Endrin ke...	7.195	7.753	580.3E6	121.1E6	48.526	48.197
22)	Mirex	7.385	8.206	379.8E6	80293561	51.176	49.718
24)	Chlordane-2	0.000	5.504f	0	161.2E6	N.D.	1561.121 #
25)	Chlordane-3	5.437	6.126	679.6E6	144.1E6	517.633	371.960 #
26)	Chlordane-4	5.495	6.198	667.4E6	142.7E6	614.288	313.668 #
27)	Chlordane-5	6.324	0.000	559.3E6	0	1310.586	N.D. #

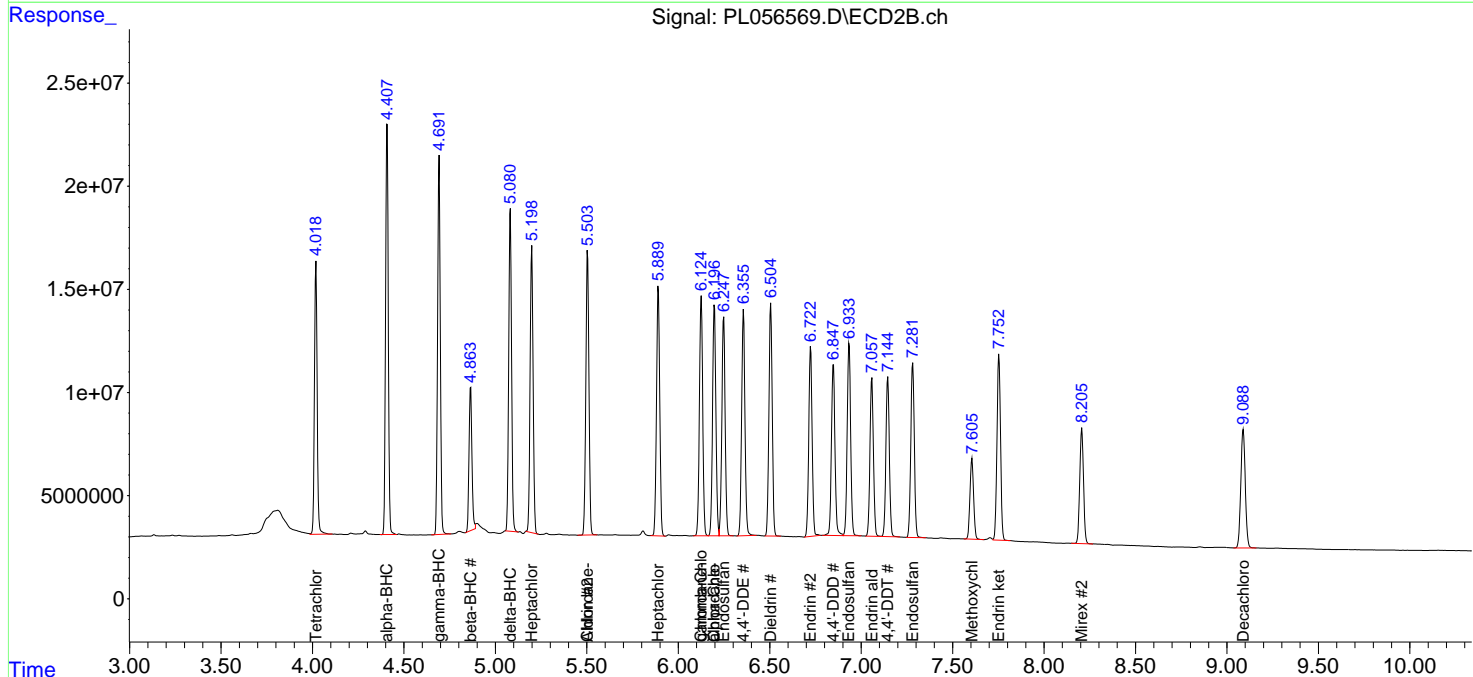
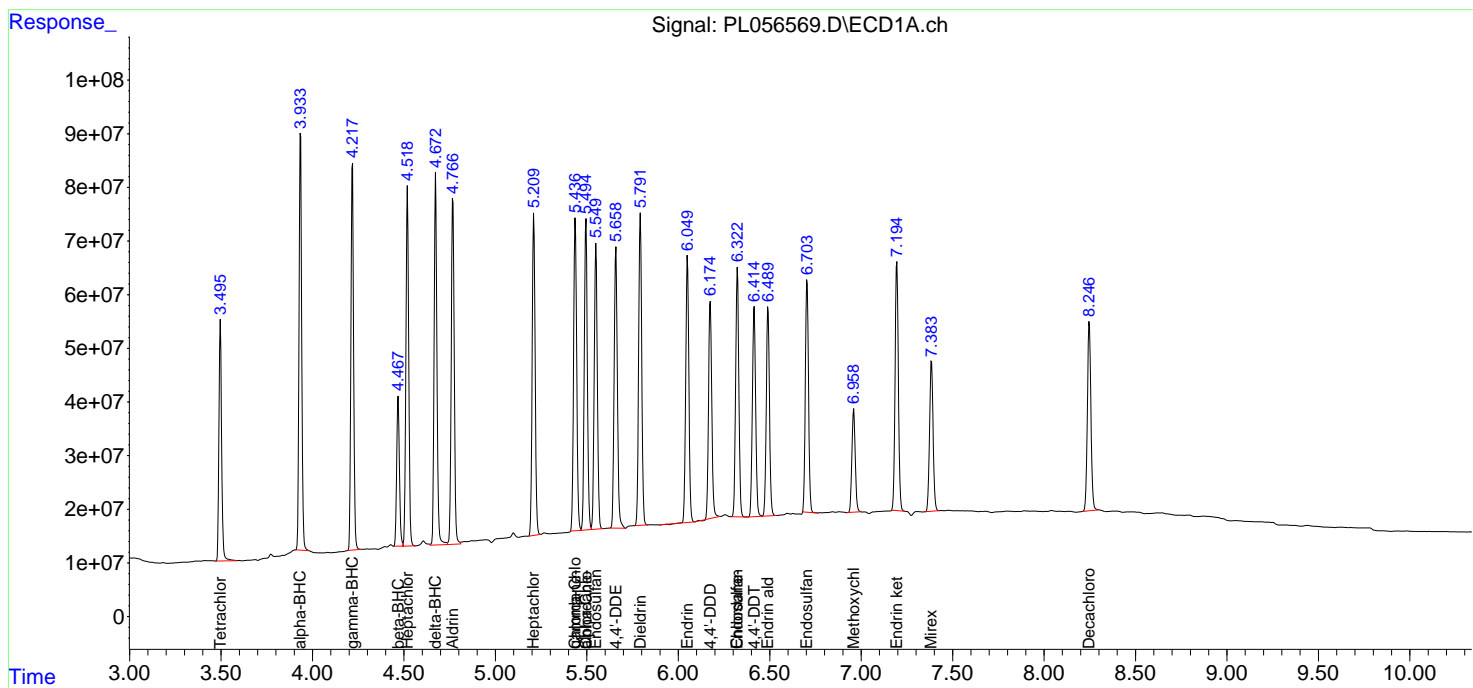
(f)=RT Delta > 1/2 Window (#)=Amounts differ by > 25% (m)=manual int.

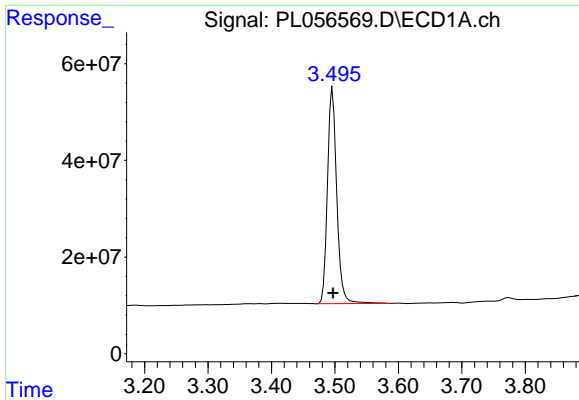
Data Path : Z:\pestpcbsrv\HPCHEM1\ECD\_L\Data\PL021420\  
 Data File : PL056569.D  
 Signal(s) : Signal #1: ECD1A.ch Signal #2: ECD2B.ch  
 Acq On : 14 Feb 2020 17:06  
 Operator : AJ\MA  
 Sample : PSTDCCC050  
 Misc :  
 ALS Vial : 4 Sample Multiplier: 1

Instrument :  
 ECD\_L  
 ClientSampled :

Integration File signal 1: autoint1.e  
 Integration File signal 2: autoint2.e  
 Quant Time: Feb 14 21:56:03 2020  
 Quant Method : Z:\pestpcbsrv\HPCHEM1\ECD\_L\methods\PL021220.M  
 Quant Title : GC Extractables  
 QLast Update : Thu Feb 13 05:32:36 2020  
 Response via : Initial Calibration  
 Integrator: ChemStation

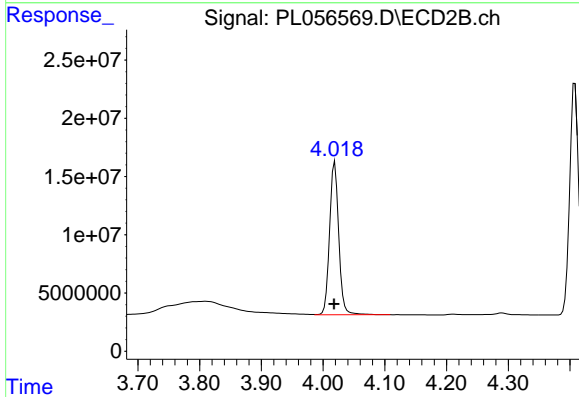
Volume Inj. : 1 µl  
 Signal #1 Phase : ZB-MR2 Signal #2 Phase: ZB-MR1  
 Signal #1 Info : 30M x 0.32mm x0.2 Signal #2 Info : 30M x 0.32mm x0.5µm



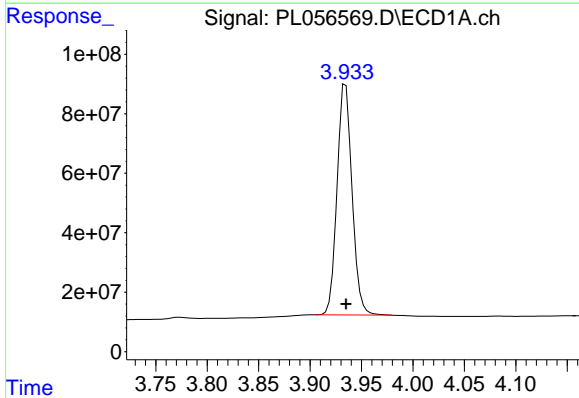


#1 Tetrachloro-m-xylene  
 R.T.: 3.496 min  
 Delta R.T.: 0.000 min  
 Response: 454133038  
 Conc: 51.47 ng/ml

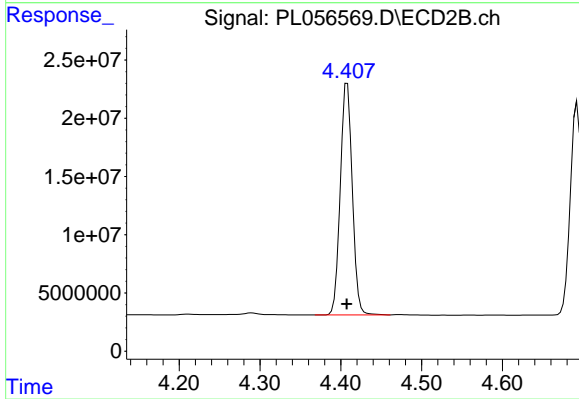
Instrument :  
 ECD\_L  
 ClientSampleId :



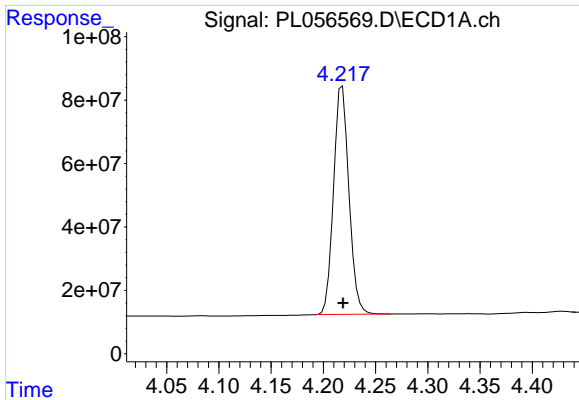
#1 Tetrachloro-m-xylene  
 R.T.: 4.019 min  
 Delta R.T.: 0.000 min  
 Response: 135300015  
 Conc: 49.73 ng/ml



#2 alpha-BHC  
 R.T.: 3.935 min  
 Delta R.T.: 0.000 min  
 Response: 786852367  
 Conc: 51.32 ng/ml



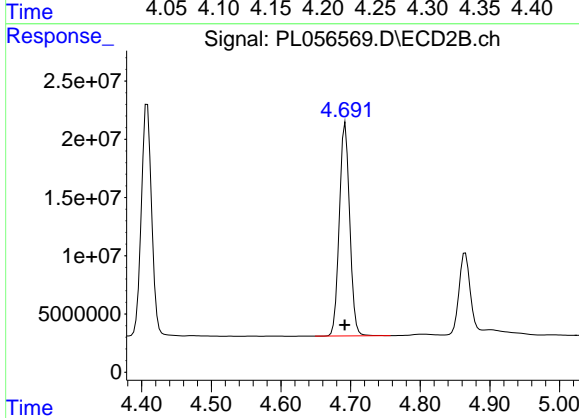
#2 alpha-BHC  
 R.T.: 4.408 min  
 Delta R.T.: 0.000 min  
 Response: 204722268  
 Conc: 50.28 ng/ml



#3 gamma-BHC (Lindane)

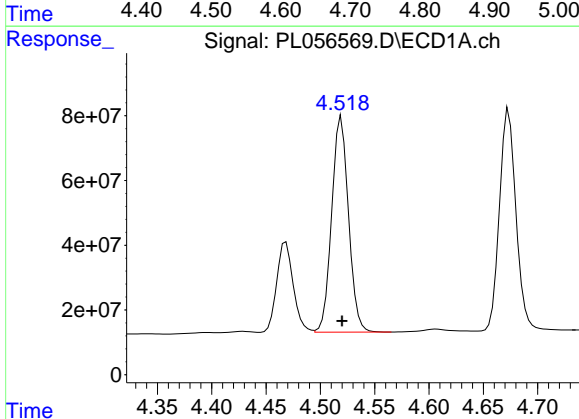
R.T.: 4.218 min  
 Delta R.T.: 0.000 min  
 Response: 736881027  
 Conc: 52.23 ng/ml

Instrument :  
 ECD\_L  
 ClientSampleId :



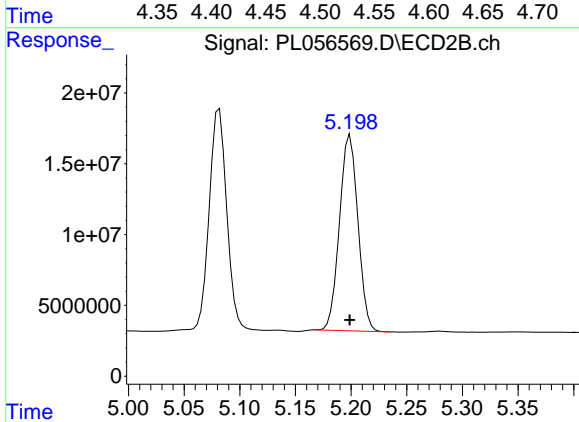
#3 gamma-BHC (Lindane)

R.T.: 4.693 min  
 Delta R.T.: 0.001 min  
 Response: 189628643  
 Conc: 49.90 ng/ml



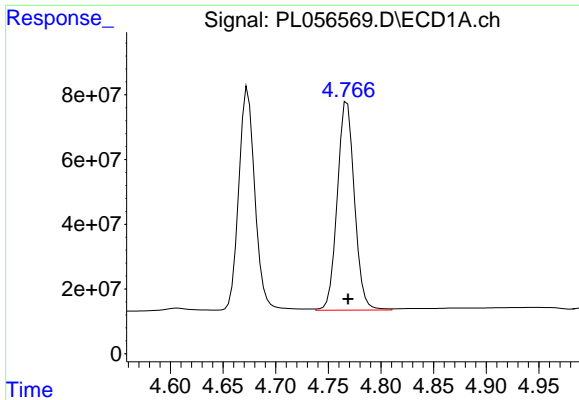
#4 Heptachlor

R.T.: 4.519 min  
 Delta R.T.: 0.000 min  
 Response: 716768437  
 Conc: 49.24 ng/ml



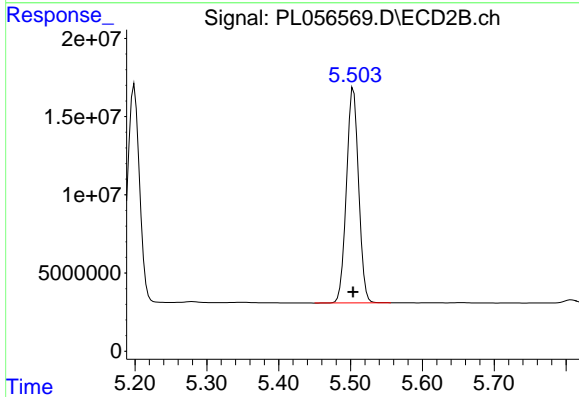
#4 Heptachlor

R.T.: 5.199 min  
 Delta R.T.: 0.000 min  
 Response: 159473711  
 Conc: 47.43 ng/ml

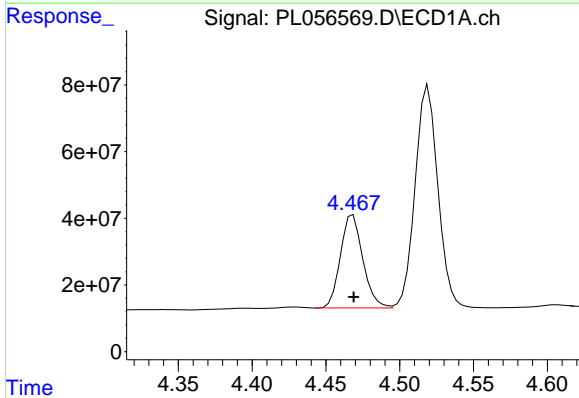


#5 Aldrin  
 R.T.: 4.768 min  
 Delta R.T.: 0.000 min  
 Response: 732713561  
 Conc: 51.41 ng/ml

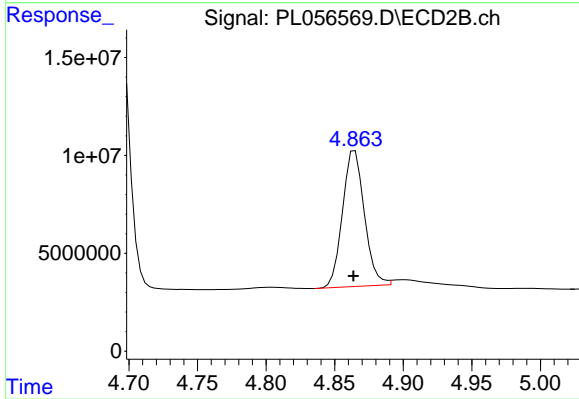
Instrument :  
 ECD\_L  
 ClientSampled :



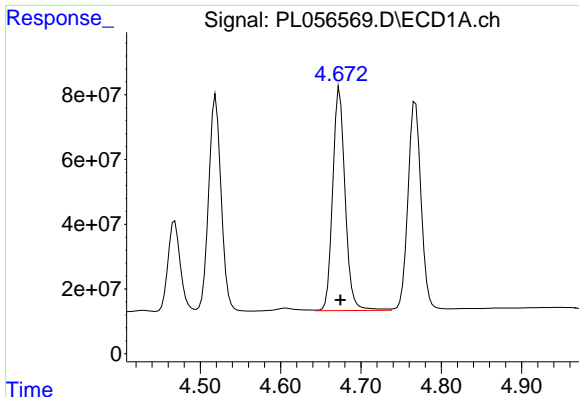
#5 Aldrin  
 R.T.: 5.504 min  
 Delta R.T.: 0.000 min  
 Response: 161173156  
 Conc: 49.70 ng/ml



#6 beta-BHC  
 R.T.: 4.468 min  
 Delta R.T.: 0.000 min  
 Response: 294771109  
 Conc: 51.66 ng/ml



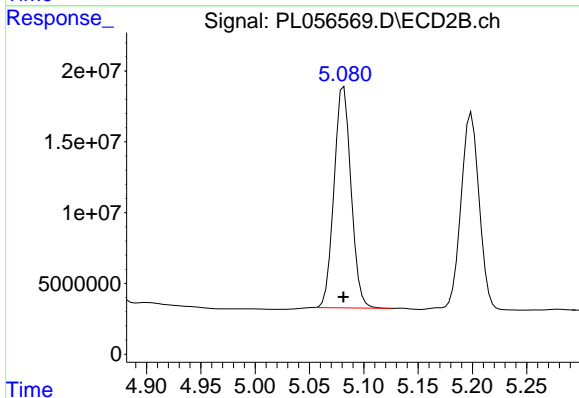
#6 beta-BHC  
 R.T.: 4.865 min  
 Delta R.T.: 0.001 min  
 Response: 77371664  
 Conc: 53.44 ng/ml



#7 delta-BHC

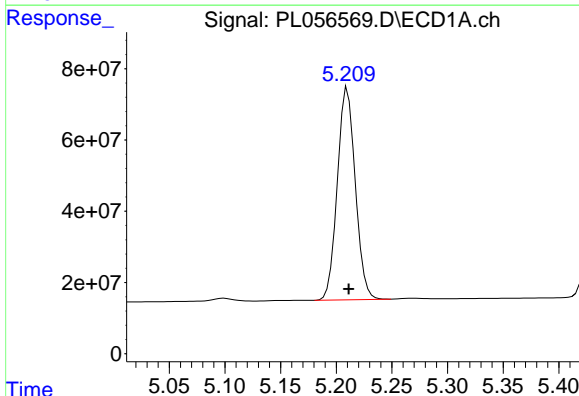
R.T.: 4.674 min  
 Delta R.T.: 0.000 min  
 Response: 742010303  
 Conc: 53.01 ng/ml

Instrument :  
 ECD\_L  
 ClientSampled :



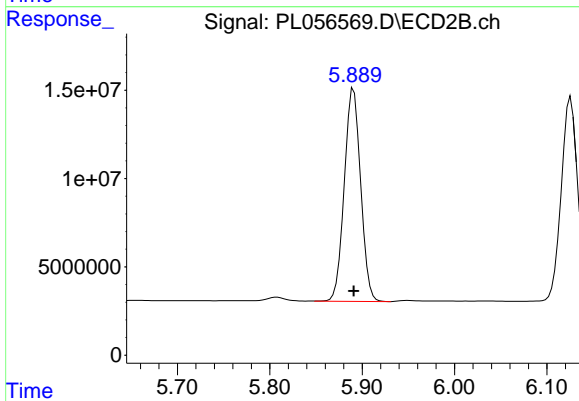
#7 delta-BHC

R.T.: 5.082 min  
 Delta R.T.: 0.000 min  
 Response: 170323827  
 Conc: 57.81 ng/ml



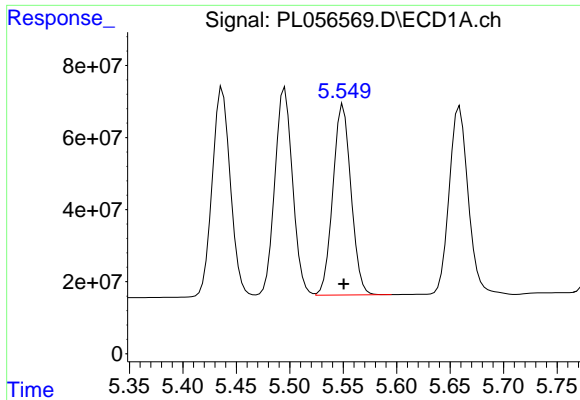
#8 Heptachlor epoxide

R.T.: 5.210 min  
 Delta R.T.: -0.001 min  
 Response: 669838080  
 Conc: 50.04 ng/ml



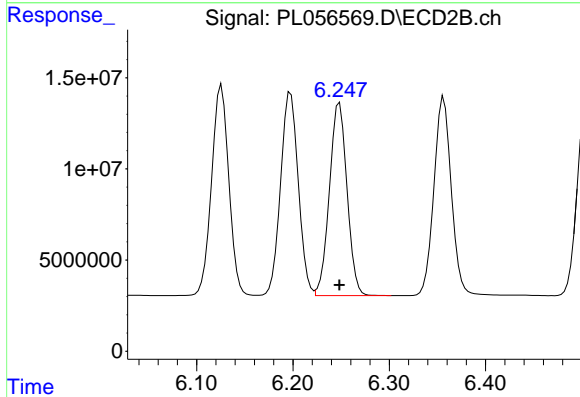
#8 Heptachlor epoxide

R.T.: 5.891 min  
 Delta R.T.: 0.000 min  
 Response: 148244879  
 Conc: 52.99 ng/ml

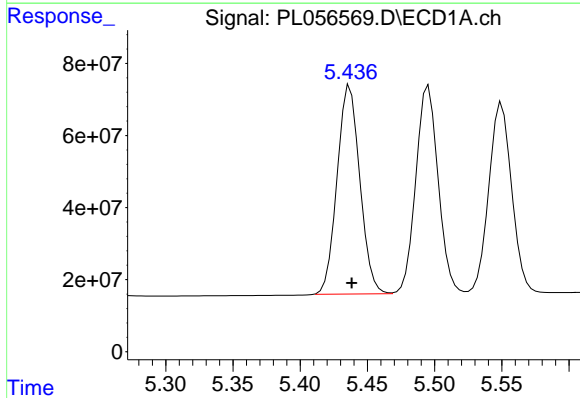


#9 Endosulfan I  
 R.T.: 5.550 min  
 Delta R.T.: 0.000 min  
 Response: 625802384  
 Conc: 49.88 ng/ml

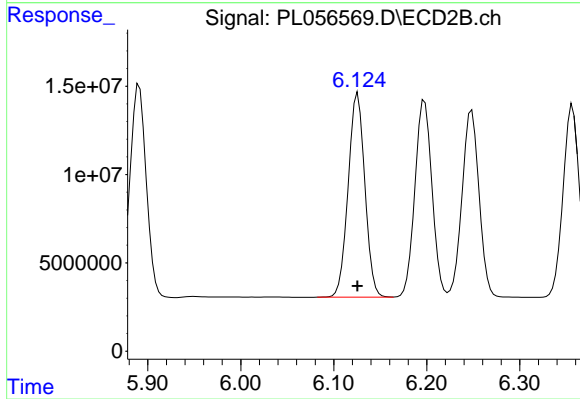
Instrument :  
 ECD\_L  
 ClientSampled :



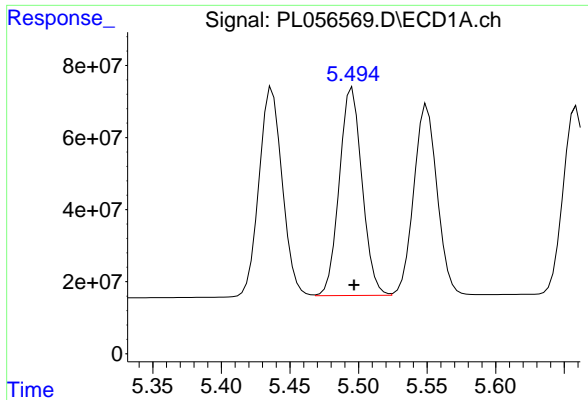
#9 Endosulfan I  
 R.T.: 6.248 min  
 Delta R.T.: 0.000 min  
 Response: 134675098  
 Conc: 48.44 ng/ml



#10 gamma-Chlordane  
 R.T.: 5.437 min  
 Delta R.T.: -0.001 min  
 Response: 679635020  
 Conc: 49.41 ng/ml

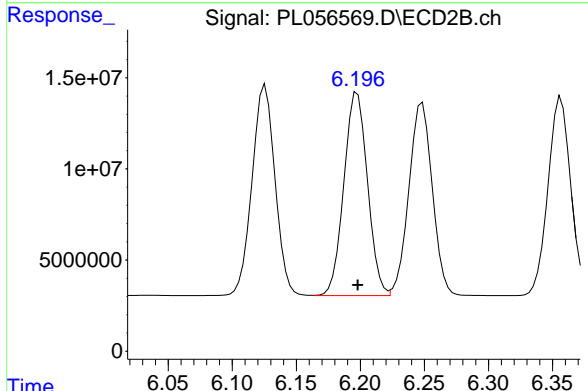


#10 gamma-Chlordane  
 R.T.: 6.126 min  
 Delta R.T.: 0.000 min  
 Response: 144142461  
 Conc: 49.28 ng/ml

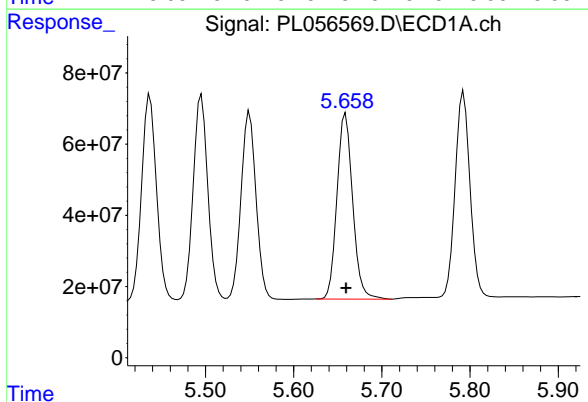


#11 alpha-Chlordane  
R.T.: 5.495 min  
Delta R.T.: -0.001 min  
Response: 667425932  
Conc: 49.00 ng/ml

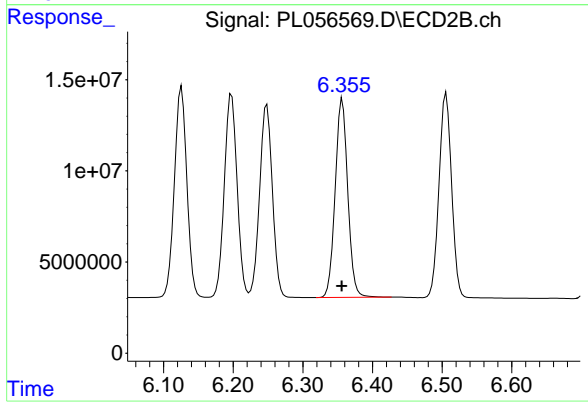
Instrument :  
ECD\_L  
ClientSampled :



#11 alpha-Chlordane  
R.T.: 6.198 min  
Delta R.T.: 0.000 min  
Response: 142749464  
Conc: 48.60 ng/ml

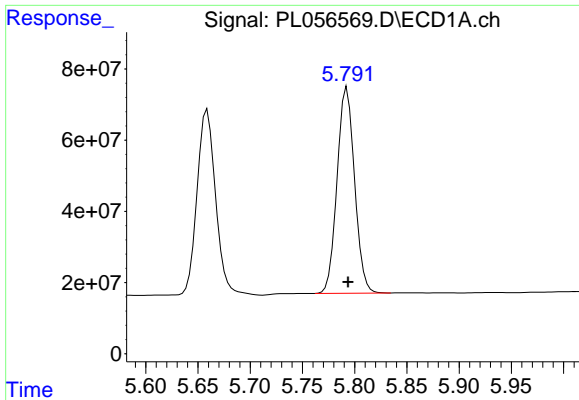


#12 4,4'-DDE  
R.T.: 5.659 min  
Delta R.T.: 0.000 min  
Response: 645300959  
Conc: 50.75 ng/ml



#12 4,4'-DDE  
R.T.: 6.357 min  
Delta R.T.: 0.000 min  
Response: 136856300  
Conc: 48.84 ng/ml

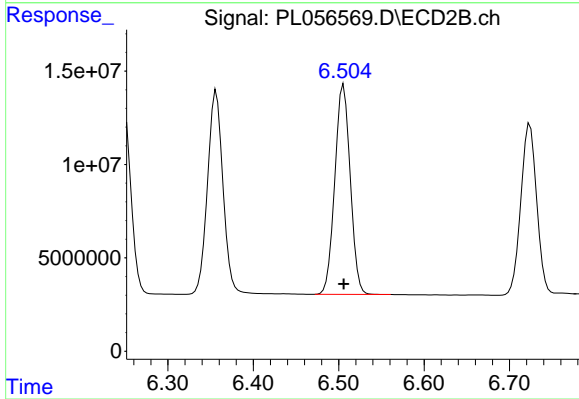




#13 Dieldrin

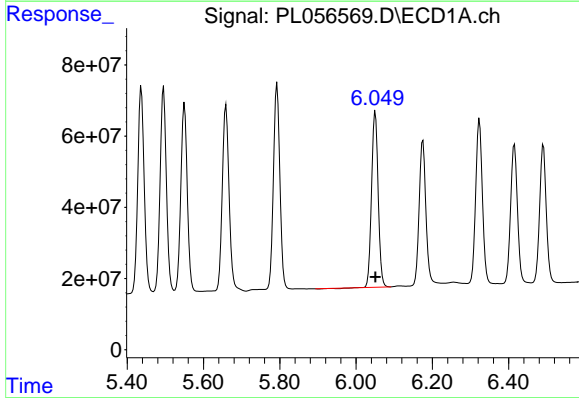
R.T.: 5.793 min  
Delta R.T.: 0.000 min  
Response: 673047311  
Conc: 50.45 ng/ml

Instrument :  
ECD\_L  
ClientSampled :



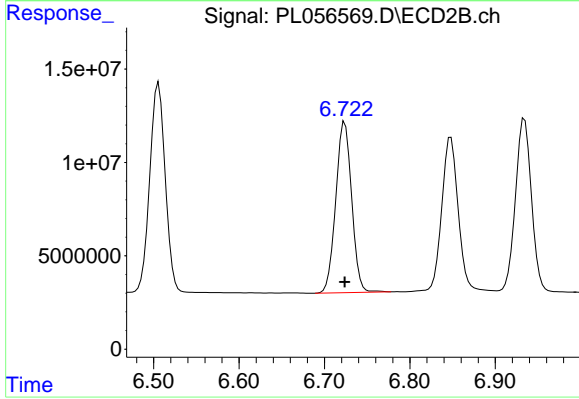
#13 Dieldrin

R.T.: 6.506 min  
Delta R.T.: 0.000 min  
Response: 141141995  
Conc: 48.50 ng/ml



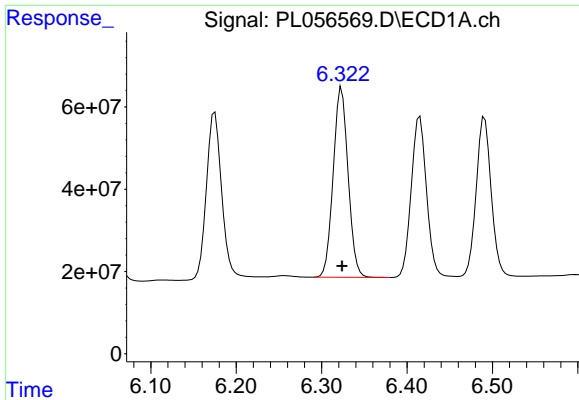
#14 Endrin

R.T.: 6.050 min  
Delta R.T.: 0.000 min  
Response: 596512737  
Conc: 50.93 ng/ml



#14 Endrin

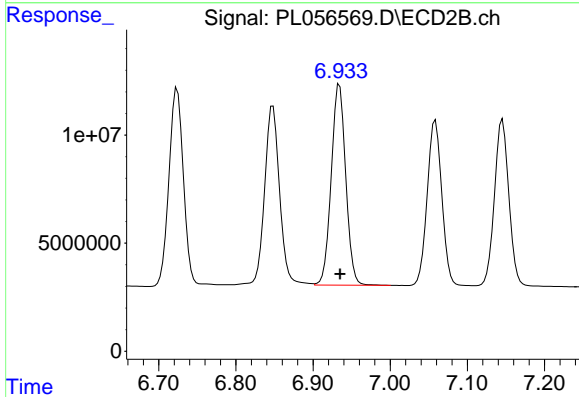
R.T.: 6.724 min  
Delta R.T.: 0.000 min  
Response: 118412421  
Conc: 48.61 ng/ml



#15 Endosulfan II

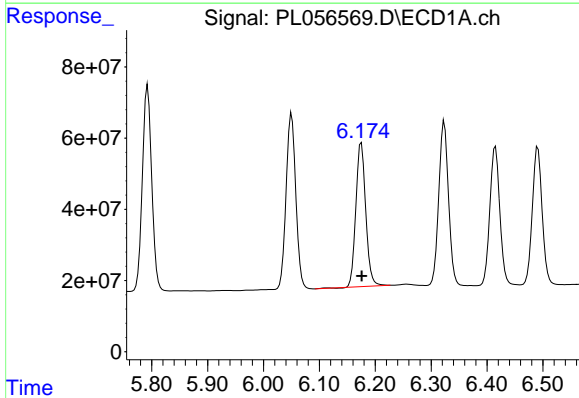
R.T.: 6.324 min  
 Delta R.T.: 0.000 min  
 Response: 559293279  
 Conc: 53.14 ng/ml

Instrument :  
 ECD\_L  
 ClientSampled :



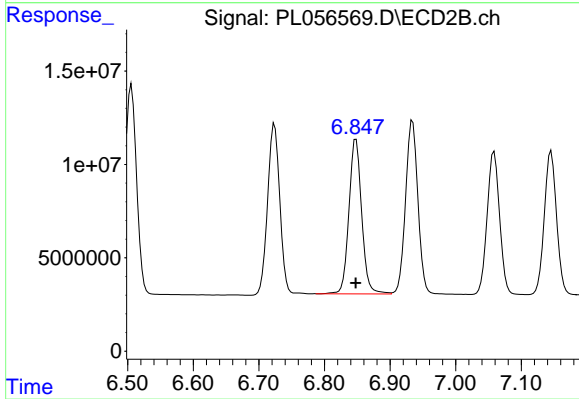
#15 Endosulfan II

R.T.: 6.934 min  
 Delta R.T.: 0.000 min  
 Response: 121726768  
 Conc: 47.80 ng/ml



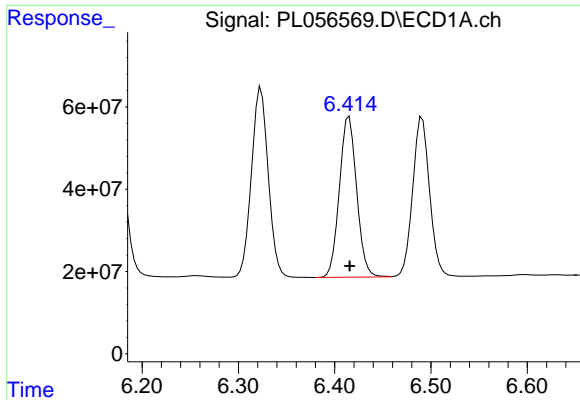
#16 4,4'-DDD

R.T.: 6.175 min  
 Delta R.T.: 0.000 min  
 Response: 496411086  
 Conc: 52.46 ng/ml



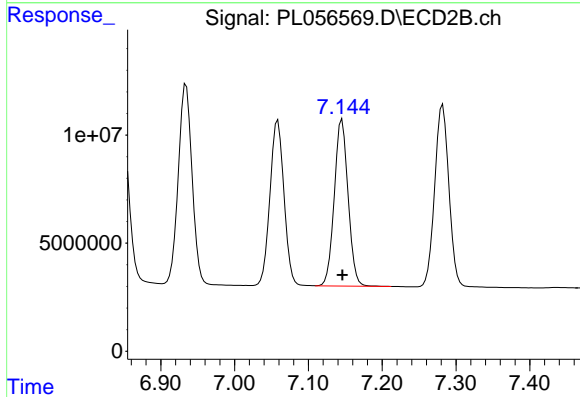
#16 4,4'-DDD

R.T.: 6.848 min  
 Delta R.T.: 0.000 min  
 Response: 111949260  
 Conc: 49.50 ng/ml

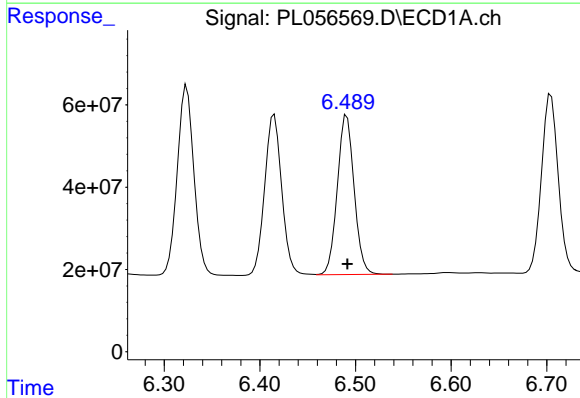


#17 4,4'-DDT  
 R.T.: 6.415 min  
 Delta R.T.: 0.000 min  
 Response: 485701844  
 Conc: 51.25 ng/ml

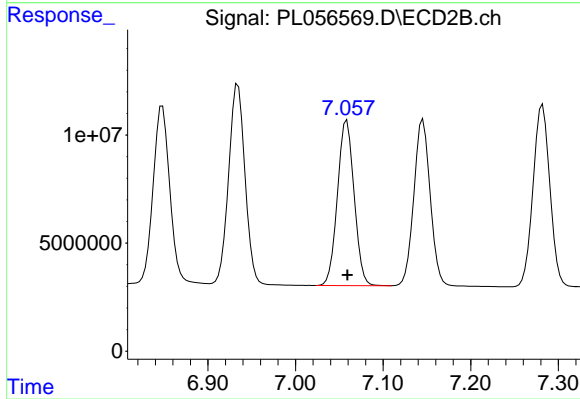
Instrument :  
 ECD\_L  
 ClientSampled :



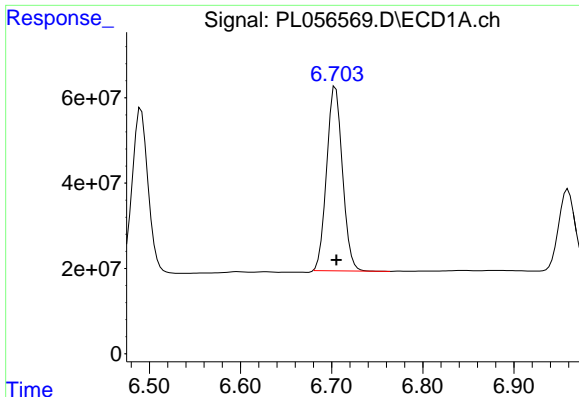
#17 4,4'-DDT  
 R.T.: 7.146 min  
 Delta R.T.: 0.000 min  
 Response: 100415936  
 Conc: 47.54 ng/ml



#18 Endrin aldehyde  
 R.T.: 6.491 min  
 Delta R.T.: 0.000 min  
 Response: 474080158  
 Conc: 49.40 ng/ml



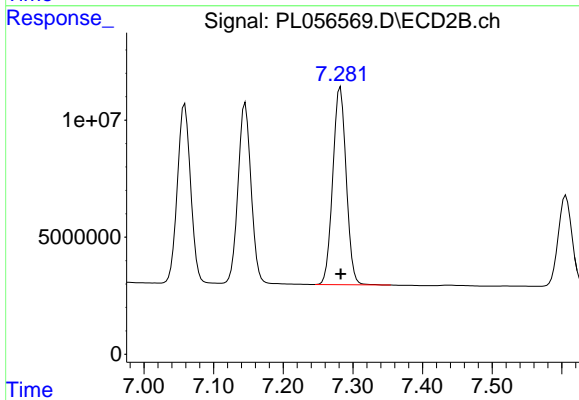
#18 Endrin aldehyde  
 R.T.: 7.059 min  
 Delta R.T.: 0.000 min  
 Response: 101190915  
 Conc: 47.54 ng/ml



#19 Endosulfan Sulfate

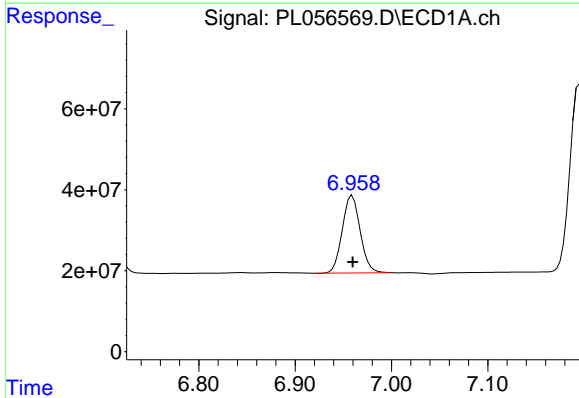
R.T.: 6.704 min  
 Delta R.T.: -0.001 min  
 Response: 51938802  
 Conc: 48.84 ng/ml

Instrument :  
 ECD\_L  
 ClientSampled :



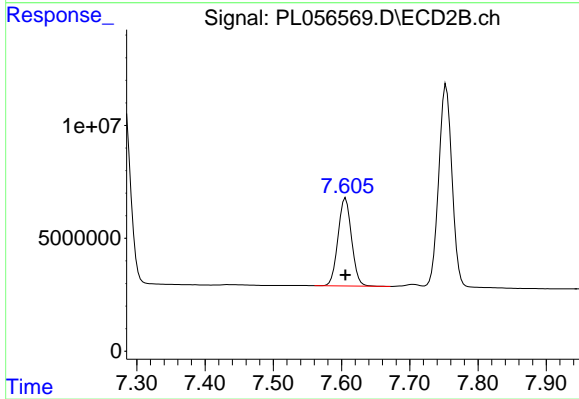
#19 Endosulfan Sulfate

R.T.: 7.282 min  
 Delta R.T.: 0.000 min  
 Response: 113056939  
 Conc: 47.71 ng/ml



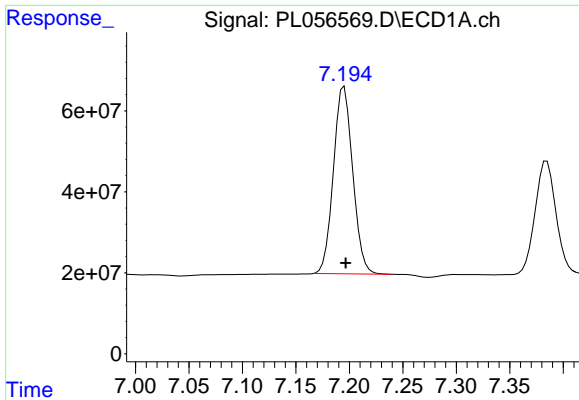
#20 Methoxychlor

R.T.: 6.959 min  
 Delta R.T.: 0.000 min  
 Response: 246403882  
 Conc: 50.07 ng/ml



#20 Methoxychlor

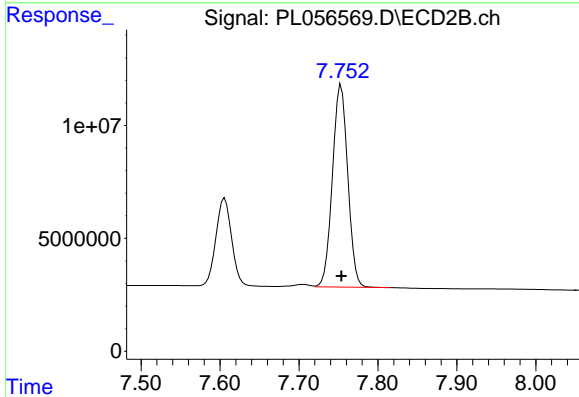
R.T.: 7.606 min  
 Delta R.T.: 0.000 min  
 Response: 53811451  
 Conc: 46.85 ng/ml



#21 Endrin ketone

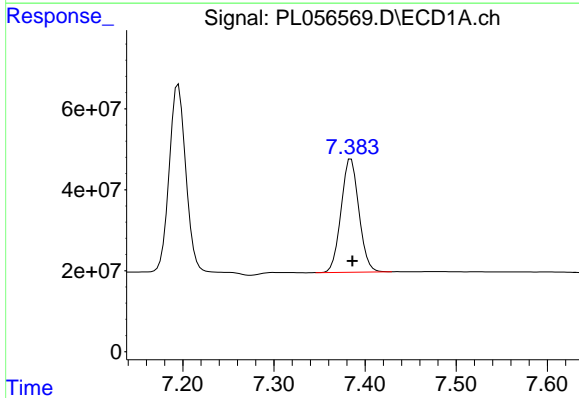
R.T.: 7.195 min  
 Delta R.T.: -0.001 min  
 Response: 580259362  
 Conc: 48.53 ng/ml

Instrument :  
 ECD\_L  
 ClientSampled :



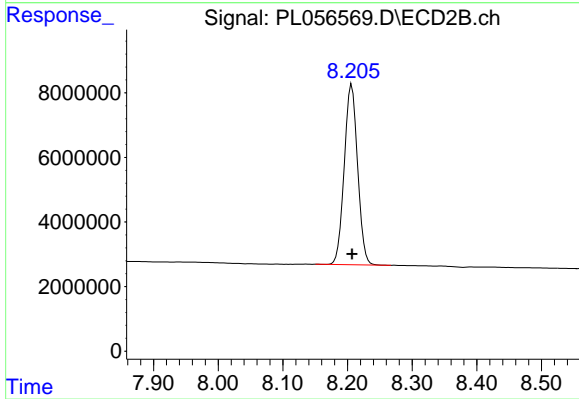
#21 Endrin ketone

R.T.: 7.753 min  
 Delta R.T.: 0.000 min  
 Response: 121105606  
 Conc: 48.20 ng/ml



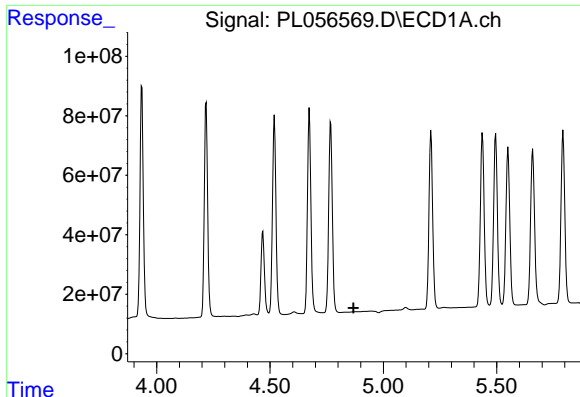
#22 Mirex

R.T.: 7.385 min  
 Delta R.T.: -0.002 min  
 Response: 379771111  
 Conc: 51.18 ng/ml



#22 Mirex

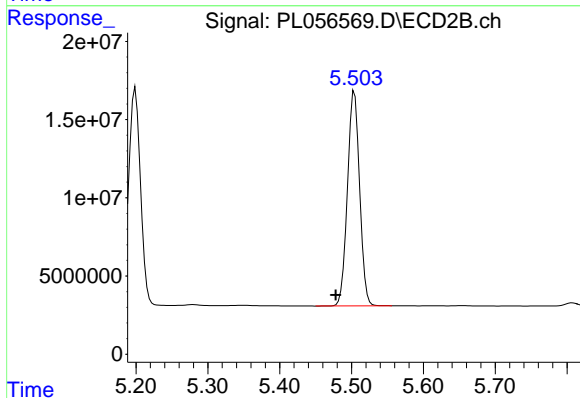
R.T.: 8.206 min  
 Delta R.T.: 0.000 min  
 Response: 80293561  
 Conc: 49.72 ng/ml



#24 Chlordane-2

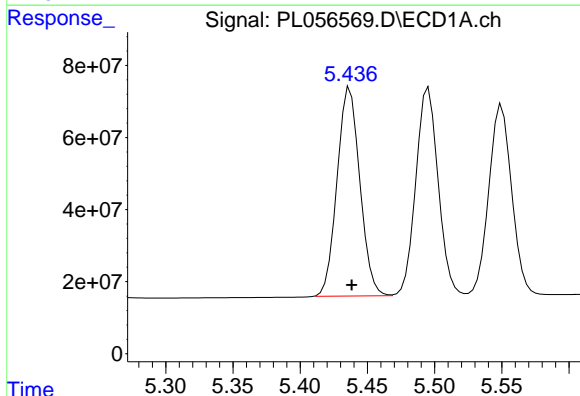
R.T.: 0.000 min  
 Exp R.T.: 4.869 min  
 Response: 0  
 Conc: N.D.

Instrument :  
 ECD\_L  
 ClientSampled :



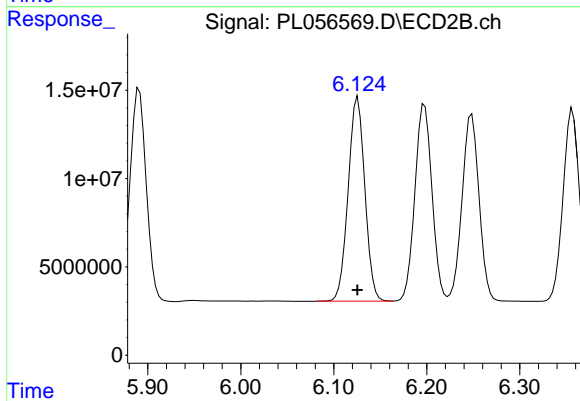
#24 Chlordane-2

R.T.: 5.504 min  
 Delta R.T.: 0.026 min  
 Response: 161173156  
 Conc: 1561.12 ng/ml



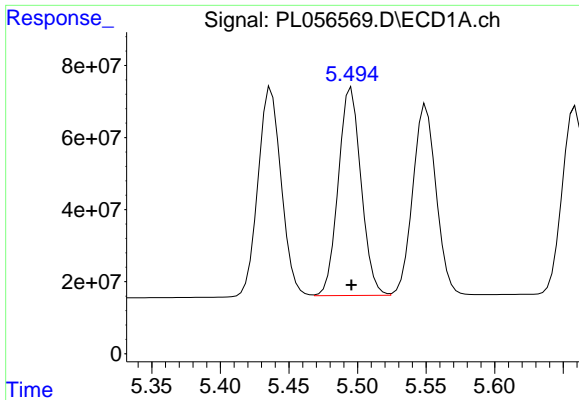
#25 Chlordane-3

R.T.: 5.437 min  
 Delta R.T.: -0.001 min  
 Response: 679635020  
 Conc: 517.63 ng/ml



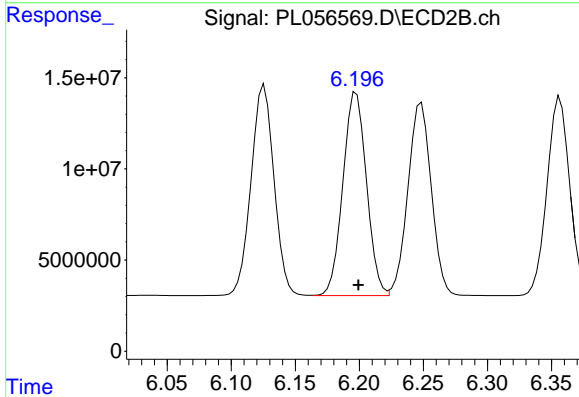
#25 Chlordane-3

R.T.: 6.126 min  
 Delta R.T.: 0.000 min  
 Response: 144142461  
 Conc: 371.96 ng/ml

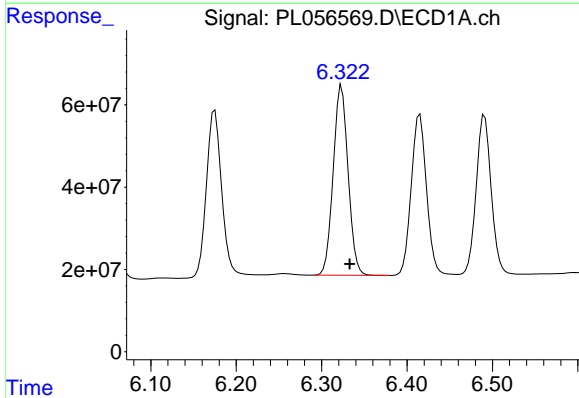


#26 Chlordane-4  
 R.T.: 5.495 min  
 Delta R.T.: 0.000 min  
 Response: 667425932  
 Conc: 614.29 ng/ml

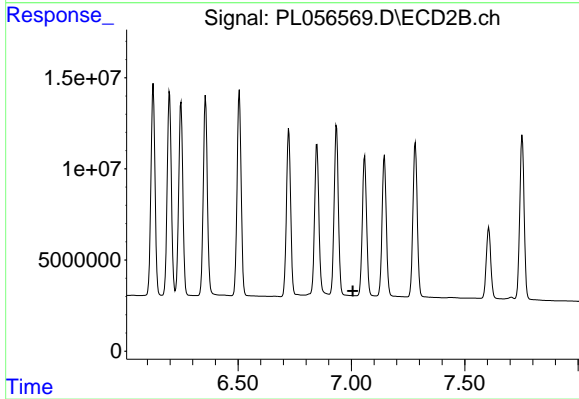
Instrument :  
 ECD\_L  
 ClientSampled :



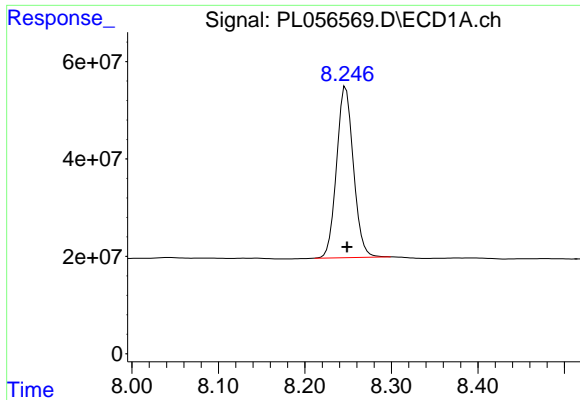
#26 Chlordane-4  
 R.T.: 6.198 min  
 Delta R.T.: -0.002 min  
 Response: 142749464  
 Conc: 313.67 ng/ml



#27 Chlordane-5  
 R.T.: 6.324 min  
 Delta R.T.: -0.010 min  
 Response: 559293279  
 Conc: 1310.59 ng/ml



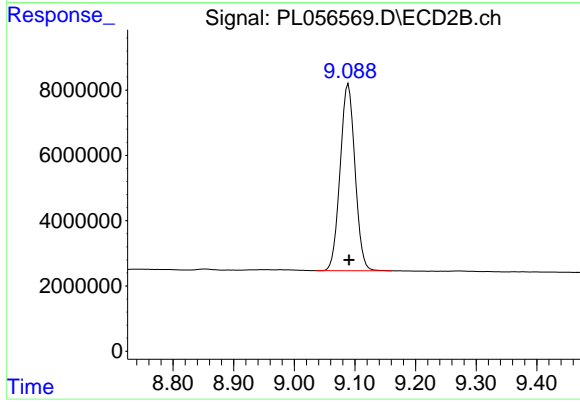
#27 Chlordane-5  
 R.T.: 0.000 min  
 Exp R.T.: 7.006 min  
 Response: 0  
 Conc: N.D.



#28 Decachlorobiphenyl

R.T.: 8.247 min  
Delta R.T.: -0.001 min  
Response: 472565210  
Conc: 49.33 ng/ml

Instrument :  
ECD\_L  
ClientSampleId :



#28 Decachlorobiphenyl

R.T.: 9.089 min  
Delta R.T.: 0.000 min  
Response: 97492060  
Conc: 47.80 ng/ml