

Data Path : Z:\pestpcbsrv\HPCHEM1\ECD_L\Data\PL021422\
 Data File : PL072659.D
 Signal(s) : Signal #1: ECD1A.ch Signal #2: ECD2B.ch
 Acq On : 14 Feb 2022 17:31
 Operator : AR\AJ
 Sample : I.BLK
 Misc :
 ALS Vial : 2 Sample Multiplier: 1

Instrument :
 ECD_L
 ClientSampleId :

Integration File signal 1: autoint1.e
 Integration File signal 2: autoint2.e
 Quant Time: Feb 15 03:47:19 2022
 Quant Method : Z:\pestpcbsrv\HPCHEM1\ECD_L\methods\PL020722.M
 Quant Title : GC Extractables
 QLast Update : Tue Feb 08 05:14:10 2022
 Response via : Initial Calibration
 Integrator: ChemStation

Volume Inj. : 1 µl
 Signal #1 Phase : ZB-MR2 Signal #2 Phase: ZB-MR1
 Signal #1 Info : 30M x 0.32mm x0.2 Signal #2 Info : 30M x 0.32mm x0.5µm

	Compound	RT#1	RT#2	Resp#1	Resp#2	ng/ml	ng/ml

System Monitoring Compounds							
1)	SA Tetrachlo...	4.561	5.490	10317461	34882823	21.427	20.194
28)	SA Decachlor...	10.320	11.384	18148850	36866091	23.973	23.248
Target Compounds							
5)	MB Aldrin	6.401	0.000	444	0	0.001	N.D. #
7)	B delta-BHC	6.338	7.016f	31467	418417	0.048	0.183 #
8)	B Heptachlo...	7.013f	0.000	17043	0	0.027	N.D. #
9)	A Endosulfan I	0.000	8.360	0	19266	N.D.	0.011 #
10)	B gamma-Chl...	7.278	8.216	22113	233185	0.035	0.121 #
11)	B alpha-Chl...	7.319f	0.000	16979	0	0.027	N.D. #
12)	B 4,4'-DDE	7.555	0.000	27015	0	0.044	N.D. #
13)	MA Dieldrin	7.682	0.000	42169	0	0.067	N.D. #
14)	MA Endrin	8.001f	0.000	127400	0	0.217	N.D. #
15)	B Endosulfa...	8.263f	9.145f	85956	513686	0.141	0.306 #
17)	MA 4,4'-DDT	8.403	9.368f	95907	107713	0.178	0.070 #
18)	B Endrin al...	8.485	9.263	144817	26071	0.332	0.023 #
19)	B Endosulfa...	8.704	9.499	92935	76336	0.156	0.051 #
21)	B Endrin ke...	0.000	10.021f	0	150485	N.D.	0.094 #
23)	Chlordane-1	5.859f	0.000	304351	0	16.398	N.D. #
24)	Chlordane-2	6.579	0.000	78985	0	3.124	N.D. #
25)	Chlordane-3	7.278	8.216	22113	233185	0.328	0.780 #
26)	Chlordane-4	7.319f	8.334f	16979	107369	0.231	0.301 #
27)	Chlordane-5	8.263f	9.179	85956	17489	3.350	0.286 #

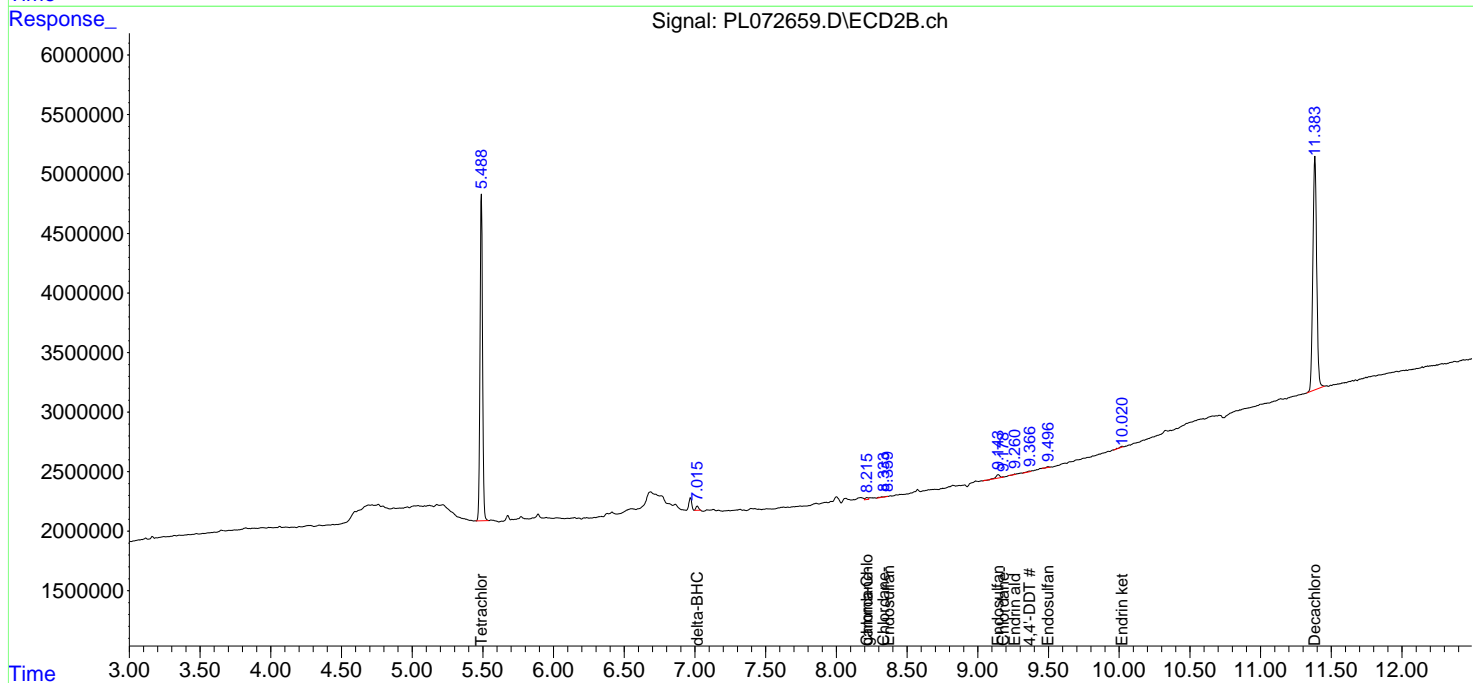
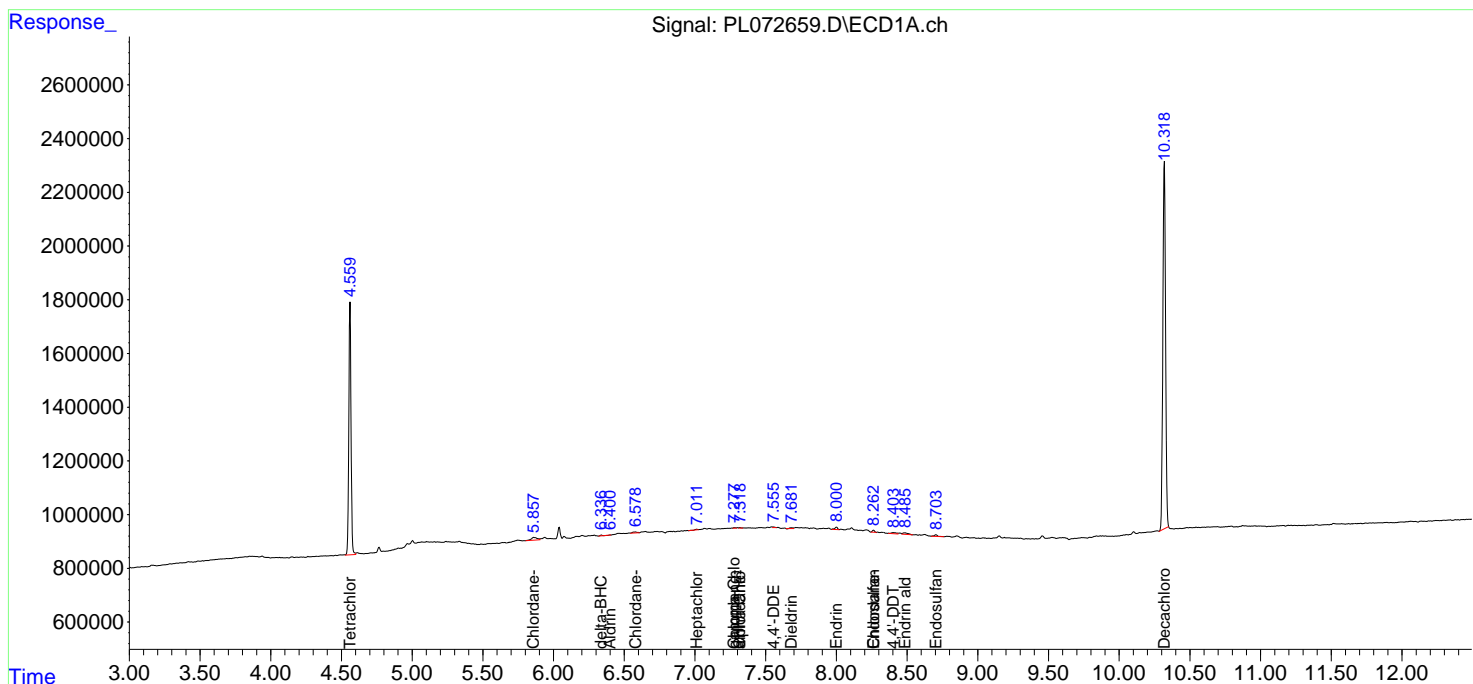
(f)=RT Delta > 1/2 Window (#)=Amounts differ by > 25% (m)=manual int.

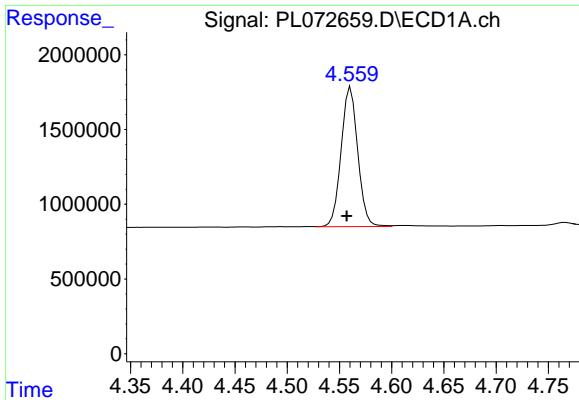
Data Path : Z:\pestpcbsrv\HPCHEM1\ECD_L\Data\PL021422\
 Data File : PL072659.D
 Signal(s) : Signal #1: ECD1A.ch Signal #2: ECD2B.ch
 Acq On : 14 Feb 2022 17:31
 Operator : AR\AJ
 Sample : I.BLK
 Misc :
 ALS Vial : 2 Sample Multiplier: 1

Instrument :
 ECD_L
 ClientSampleId :

Integration File signal 1: autoint1.e
 Integration File signal 2: autoint2.e
 Quant Time: Feb 15 03:47:19 2022
 Quant Method : Z:\pestpcbsrv\HPCHEM1\ECD_L\methods\PL020722.M
 Quant Title : GC Extractables
 QLast Update : Tue Feb 08 05:14:10 2022
 Response via : Initial Calibration
 Integrator: ChemStation

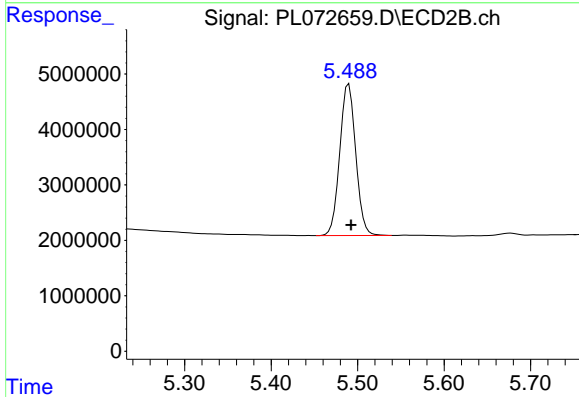
Volume Inj. : 1 µl
 Signal #1 Phase : ZB-MR2 Signal #2 Phase: ZB-MR1
 Signal #1 Info : 30M x 0.32mm x0.2 Signal #2 Info : 30M x 0.32mm x0.5µm



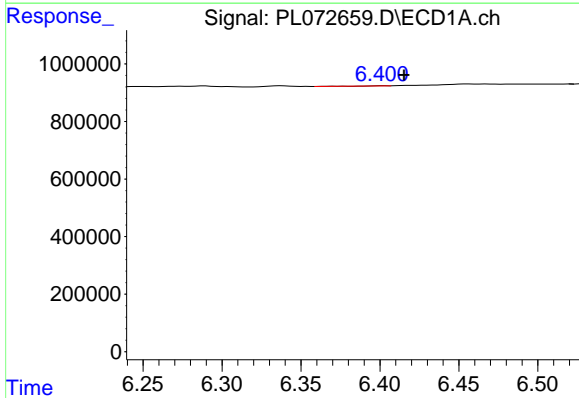


#1 Tetrachloro-m-xylene
 R.T.: 4.561 min
 Delta R.T.: 0.004 min
 Response: 10317461
 Conc: 21.43 ng/ml

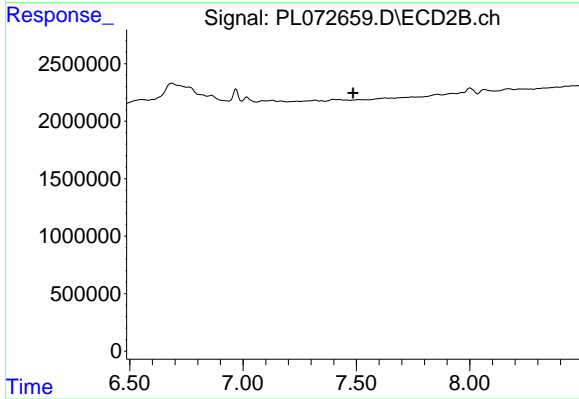
Instrument :
 ECD_L
 ClientSampleId :



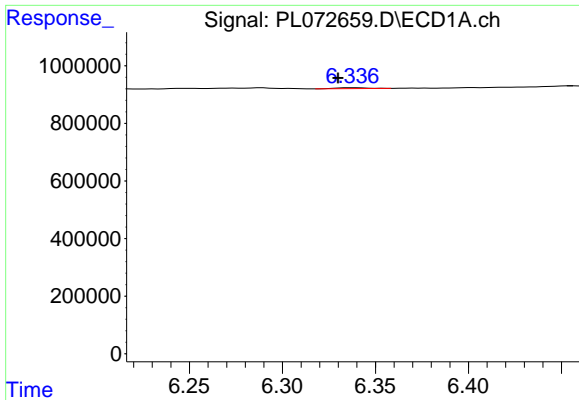
#1 Tetrachloro-m-xylene
 R.T.: 5.490 min
 Delta R.T.: -0.003 min
 Response: 34882823
 Conc: 20.19 ng/ml



#5 Aldrin
 R.T.: 6.401 min
 Delta R.T.: -0.014 min
 Response: 444
 Conc: 0.00 ng/ml



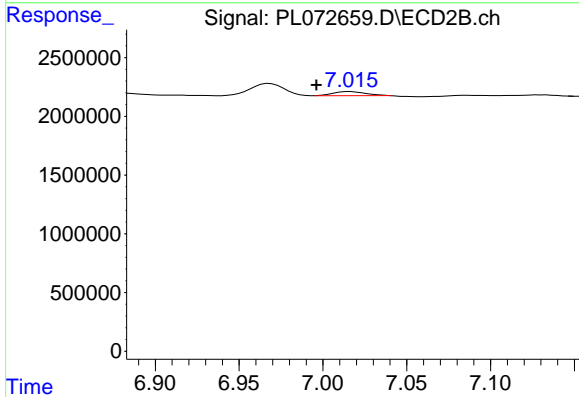
#5 Aldrin
 R.T.: 0.000 min
 Exp R.T.: 7.486 min
 Response: 0
 Conc: N.D.



#7 delta-BHC

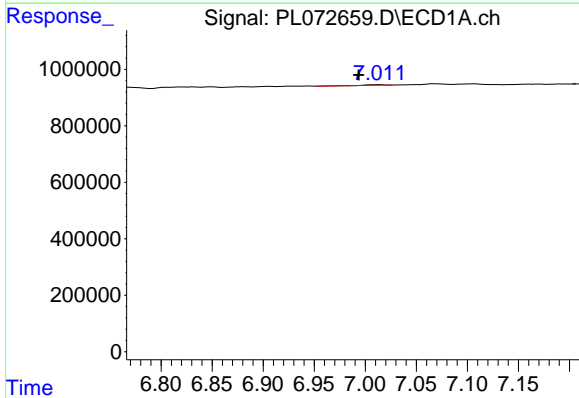
R.T.: 6.338 min
 Delta R.T.: 0.008 min
 Response: 31467
 Conc: 0.05 ng/ml

Instrument :
 ECD_L
 ClientSampleId :



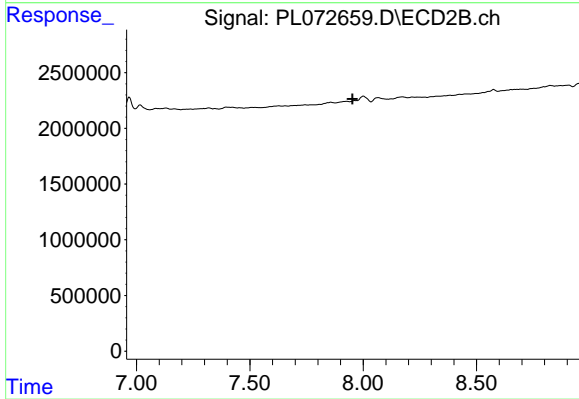
#7 delta-BHC

R.T.: 7.016 min
 Delta R.T.: 0.020 min
 Response: 418417
 Conc: 0.18 ng/ml



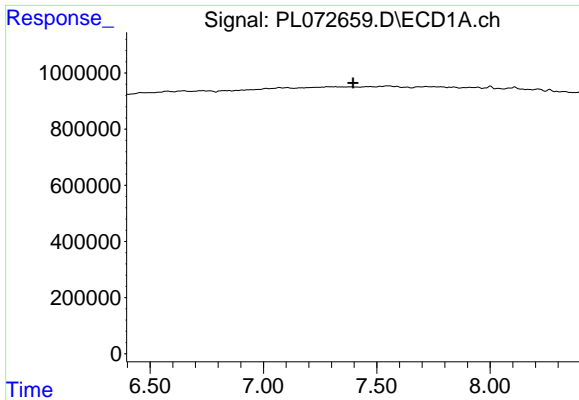
#8 Heptachlor epoxide

R.T.: 7.013 min
 Delta R.T.: 0.019 min
 Response: 17043
 Conc: 0.03 ng/ml



#8 Heptachlor epoxide

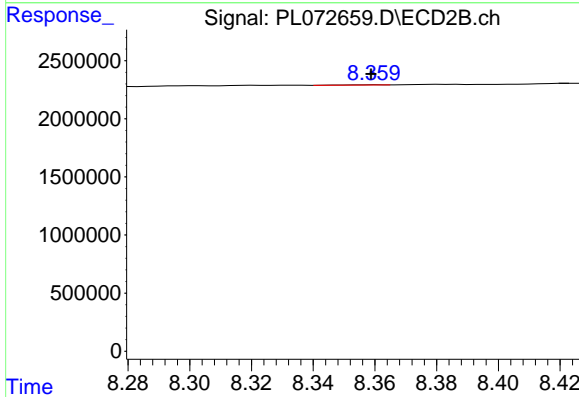
R.T.: 0.000 min
 Exp R.T. : 7.954 min
 Response: 0
 Conc: N.D.



#9 Endosulfan I

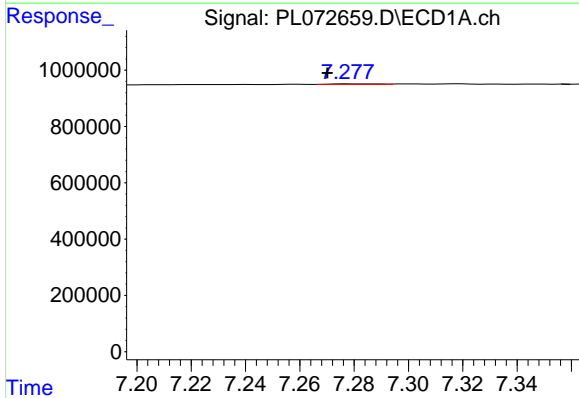
R.T.: 0.000 min
 Exp R.T.: 7.395 min
 Response: 0
 Conc: N.D.

Instrument :
 ECD_L
 ClientSampleId :



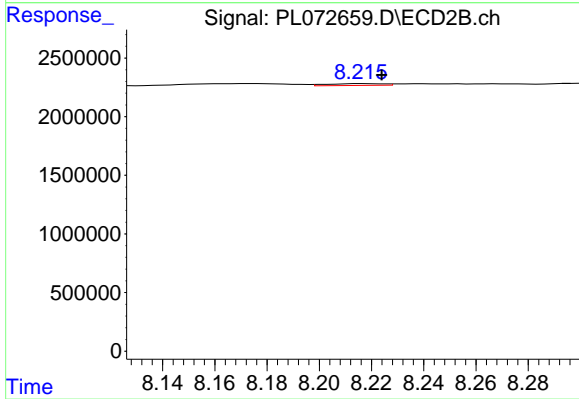
#9 Endosulfan I

R.T.: 8.360 min
 Delta R.T.: 0.001 min
 Response: 19266
 Conc: 0.01 ng/ml



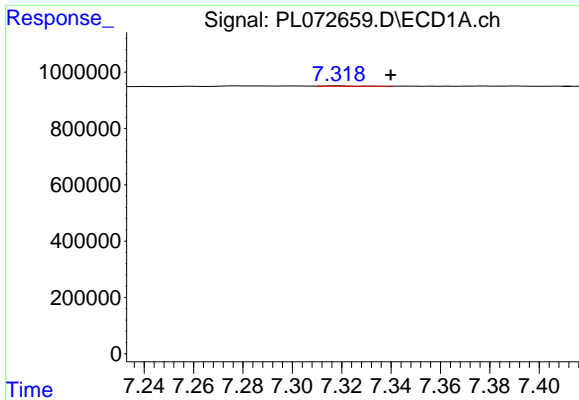
#10 gamma-Chlordane

R.T.: 7.278 min
 Delta R.T.: 0.008 min
 Response: 22113
 Conc: 0.03 ng/ml



#10 gamma-Chlordane

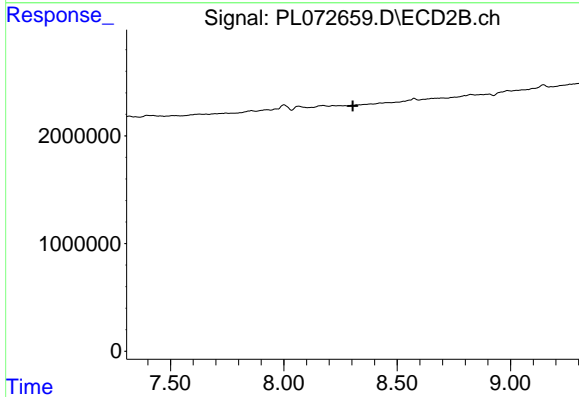
R.T.: 8.216 min
 Delta R.T.: -0.008 min
 Response: 233185
 Conc: 0.12 ng/ml



#11 alpha-Chlordane

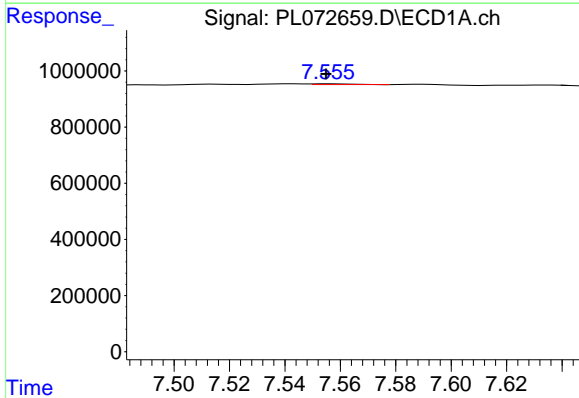
R.T.: 7.319 min
 Delta R.T.: -0.021 min
 Response: 16979
 Conc: 0.03 ng/ml

Instrument :
 ECD_L
 ClientSampleId :



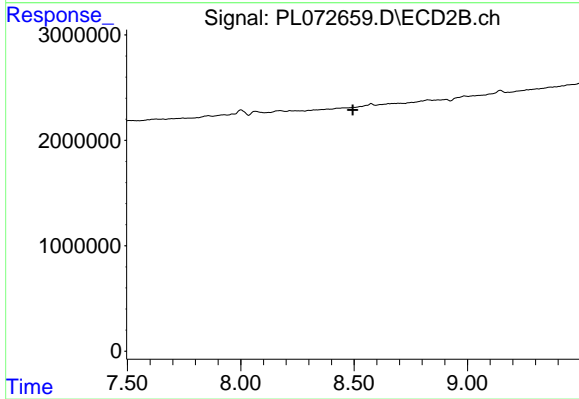
#11 alpha-Chlordane

R.T.: 0.000 min
 Exp R.T. : 8.304 min
 Response: 0
 Conc: N.D.



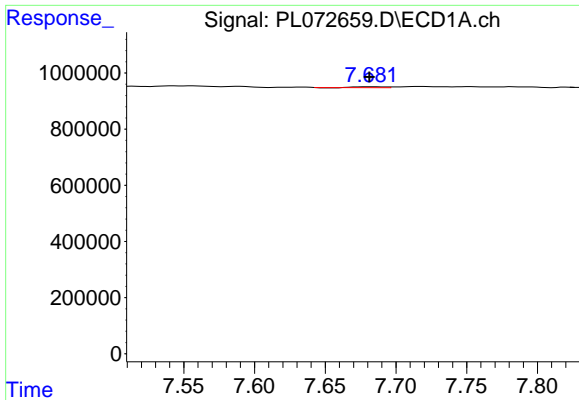
#12 4,4'-DDE

R.T.: 7.555 min
 Delta R.T.: 0.000 min
 Response: 27015
 Conc: 0.04 ng/ml



#12 4,4'-DDE

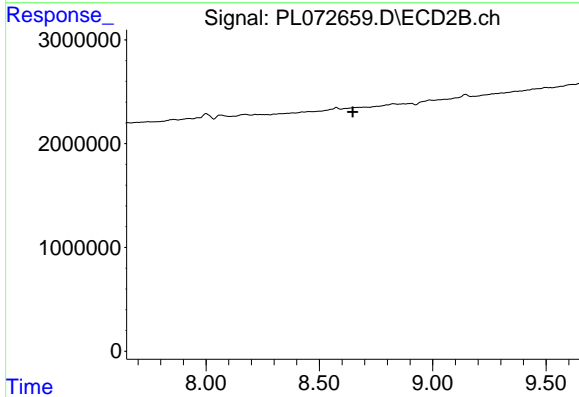
R.T.: 0.000 min
 Exp R.T. : 8.494 min
 Response: 0
 Conc: N.D.



#13 Dieldrin

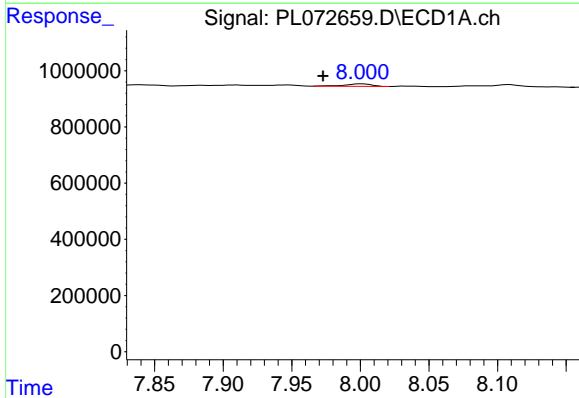
R.T.: 7.682 min
 Delta R.T.: 0.000 min
 Response: 42169
 Conc: 0.07 ng/ml

Instrument :
 ECD_L
 ClientSampleId :



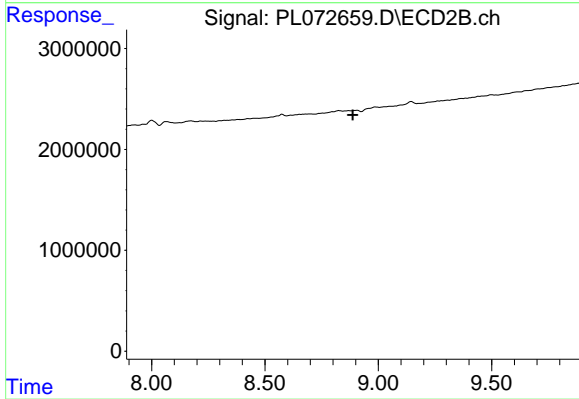
#13 Dieldrin

R.T.: 0.000 min
 Exp R.T. : 8.648 min
 Response: 0
 Conc: N.D.



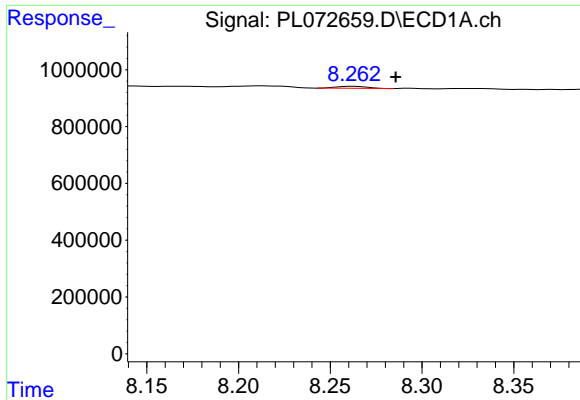
#14 Endrin

R.T.: 8.001 min
 Delta R.T.: 0.028 min
 Response: 127400
 Conc: 0.22 ng/ml



#14 Endrin

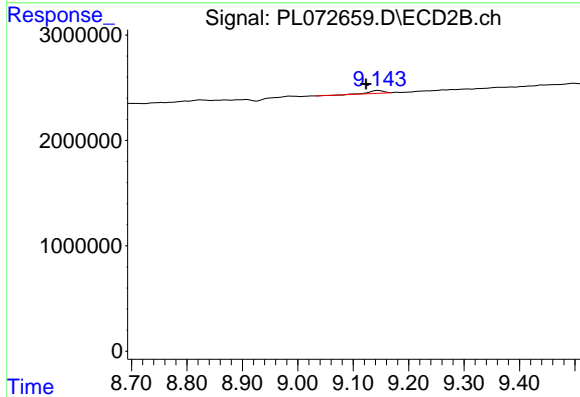
R.T.: 0.000 min
 Exp R.T. : 8.887 min
 Response: 0
 Conc: N.D.



#15 Endosulfan II

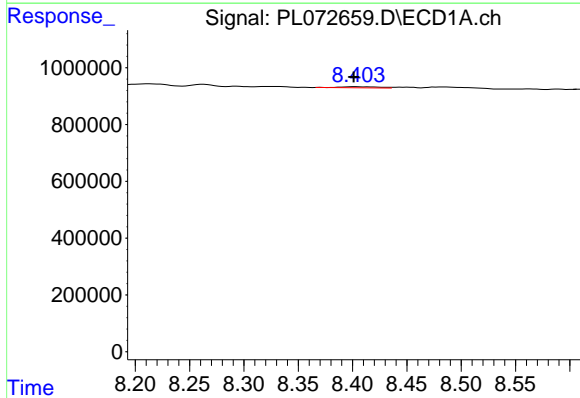
R.T.: 8.263 min
 Delta R.T.: -0.023 min
 Response: 85956
 Conc: 0.14 ng/ml

Instrument :
 ECD_L
 ClientSampleId :



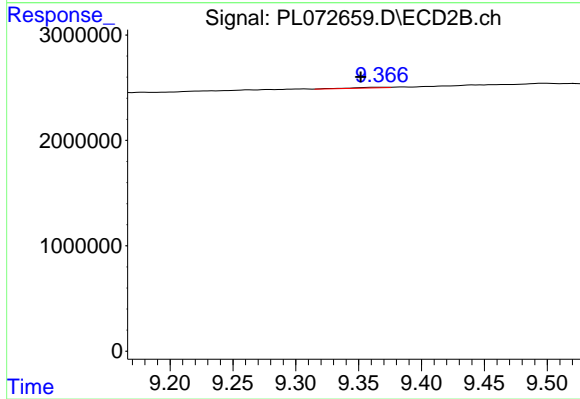
#15 Endosulfan II

R.T.: 9.145 min
 Delta R.T.: 0.022 min
 Response: 513686
 Conc: 0.31 ng/ml



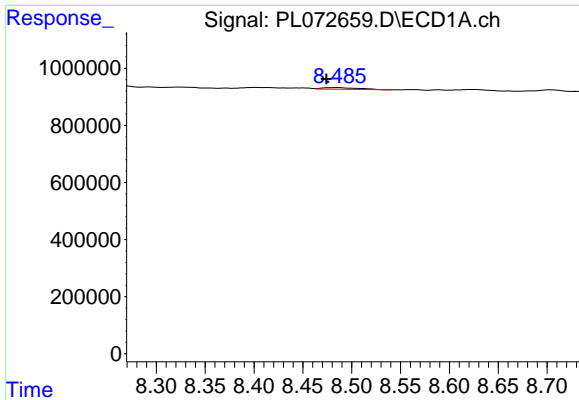
#17 4,4'-DDT

R.T.: 8.403 min
 Delta R.T.: 0.001 min
 Response: 95907
 Conc: 0.18 ng/ml



#17 4,4'-DDT

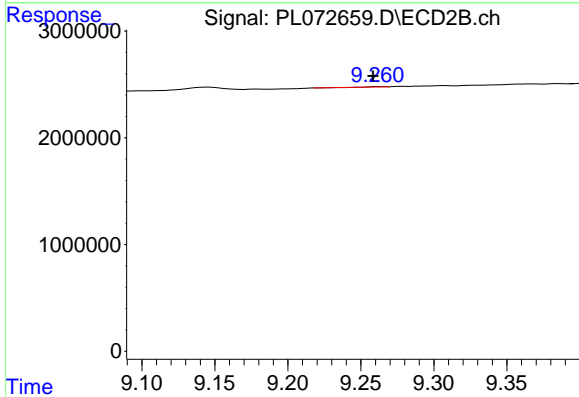
R.T.: 9.368 min
 Delta R.T.: 0.016 min
 Response: 107713
 Conc: 0.07 ng/ml



#18 Endrin aldehyde

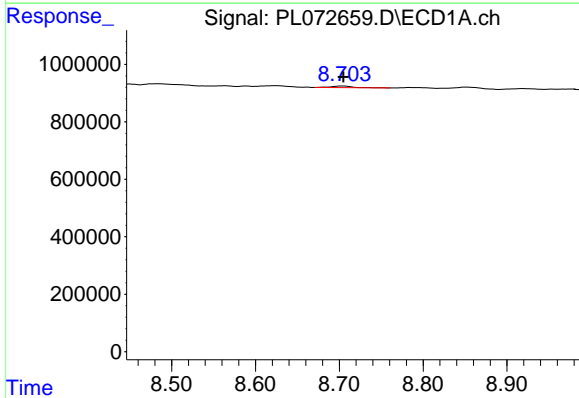
R.T.: 8.485 min
 Delta R.T.: 0.011 min
 Response: 144817
 Conc: 0.33 ng/ml

Instrument :
 ECD_L
 ClientSampleId :



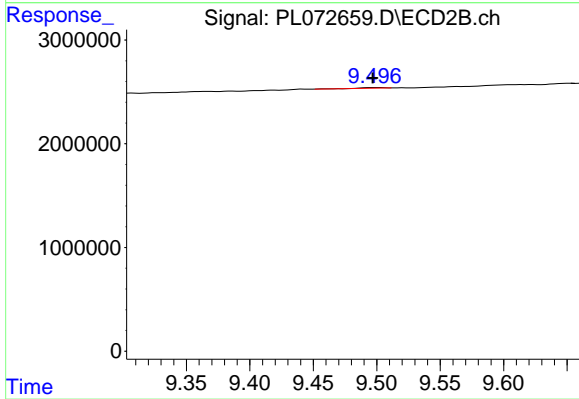
#18 Endrin aldehyde

R.T.: 9.263 min
 Delta R.T.: 0.004 min
 Response: 26071
 Conc: 0.02 ng/ml



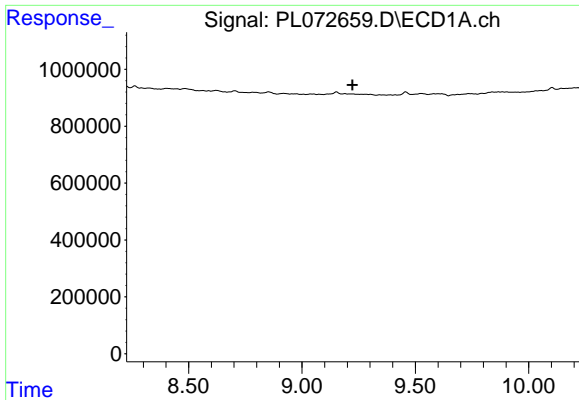
#19 Endosulfan Sulfate

R.T.: 8.704 min
 Delta R.T.: -0.001 min
 Response: 92935
 Conc: 0.16 ng/ml



#19 Endosulfan Sulfate

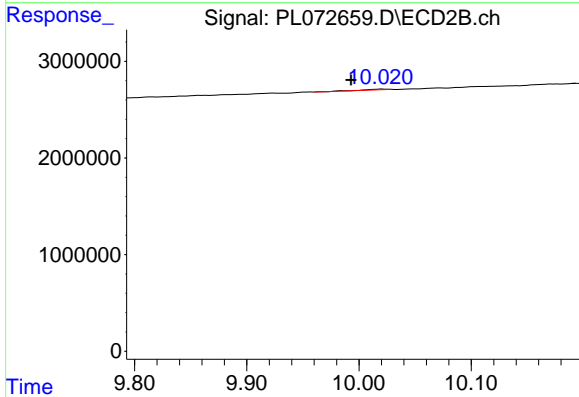
R.T.: 9.499 min
 Delta R.T.: 0.002 min
 Response: 76336
 Conc: 0.05 ng/ml



#21 Endrin ketone

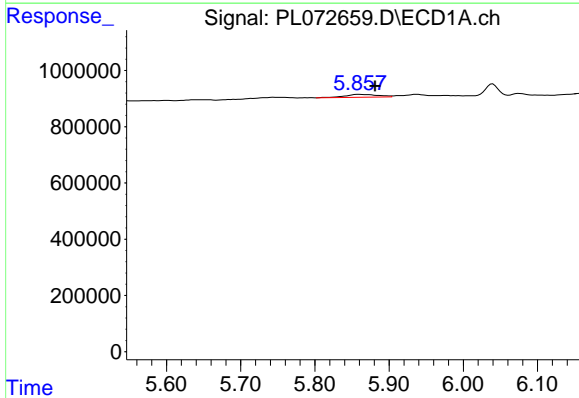
R.T.: 0.000 min
 Exp R.T. : 9.223 min
 Response: 0
 Conc: N.D.

Instrument :
 ECD_L
 ClientSampleId :



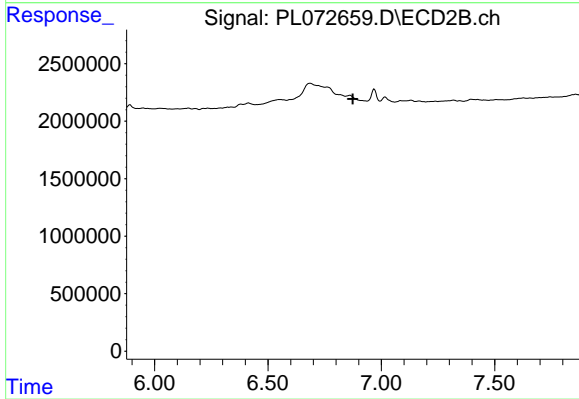
#21 Endrin ketone

R.T.: 10.021 min
 Delta R.T.: 0.028 min
 Response: 150485
 Conc: 0.09 ng/ml



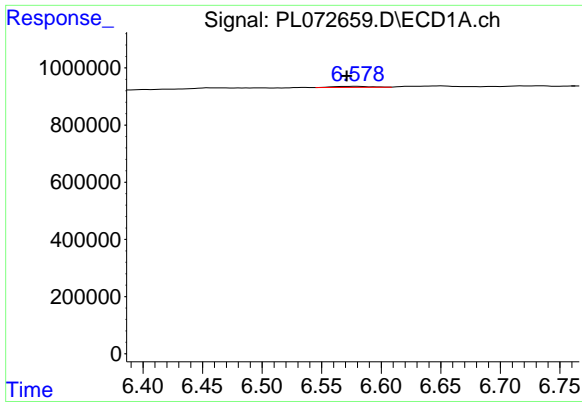
#23 Chlordane-1

R.T.: 5.859 min
 Delta R.T.: -0.022 min
 Response: 304351
 Conc: 16.40 ng/ml



#23 Chlordane-1

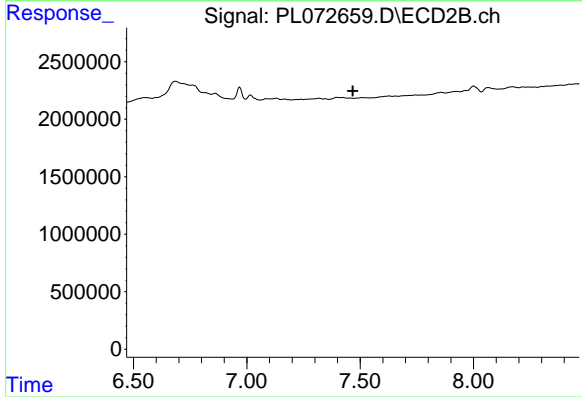
R.T.: 0.000 min
 Exp R.T. : 6.874 min
 Response: 0
 Conc: N.D.



#24 Chlordane-2

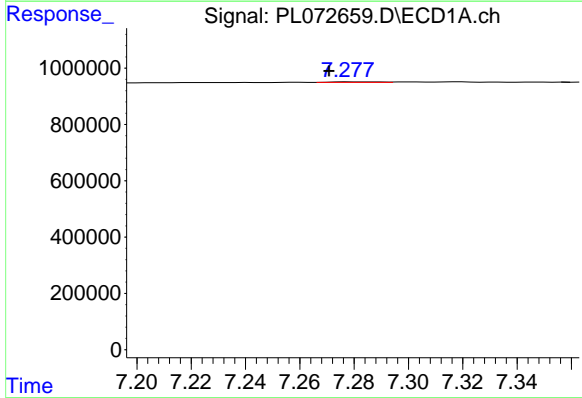
R.T.: 6.579 min
 Delta R.T.: 0.008 min
 Response: 78985
 Conc: 3.12 ng/ml

Instrument :
 ECD_L
 ClientSampleId :



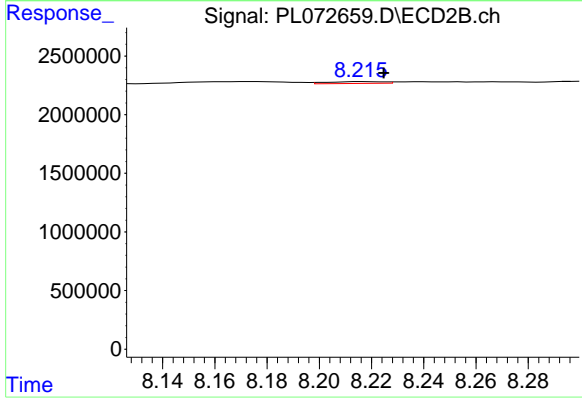
#24 Chlordane-2

R.T.: 0.000 min
 Exp R.T. : 7.467 min
 Response: 0
 Conc: N.D.



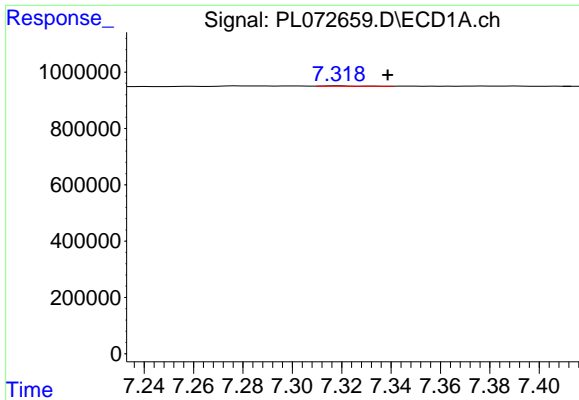
#25 Chlordane-3

R.T.: 7.278 min
 Delta R.T.: 0.007 min
 Response: 22113
 Conc: 0.33 ng/ml



#25 Chlordane-3

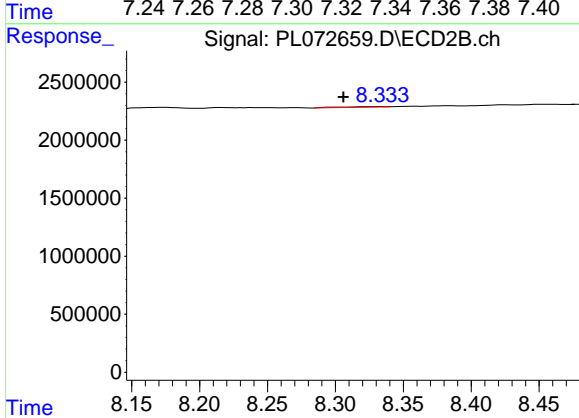
R.T.: 8.216 min
 Delta R.T.: -0.008 min
 Response: 233185
 Conc: 0.78 ng/ml



#26 Chlordane-4

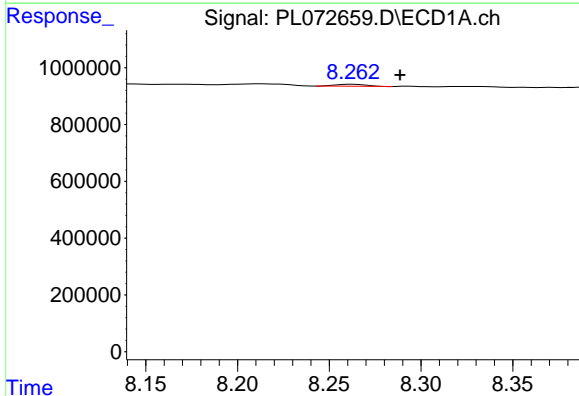
R.T.: 7.319 min
 Delta R.T.: -0.020 min
 Response: 16979
 Conc: 0.23 ng/ml

Instrument :
 ECD_L
 ClientSampleId :



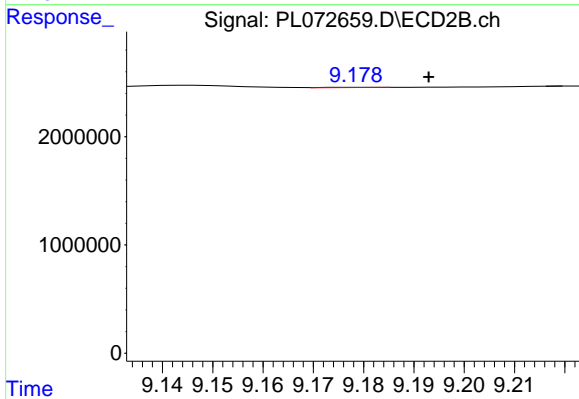
#26 Chlordane-4

R.T.: 8.334 min
 Delta R.T.: 0.028 min
 Response: 107369
 Conc: 0.30 ng/ml



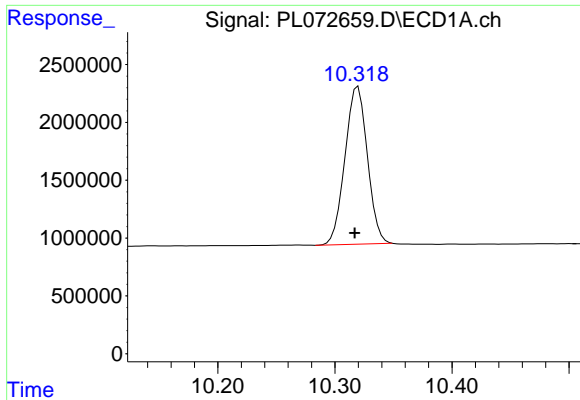
#27 Chlordane-5

R.T.: 8.263 min
 Delta R.T.: -0.026 min
 Response: 85956
 Conc: 3.35 ng/ml



#27 Chlordane-5

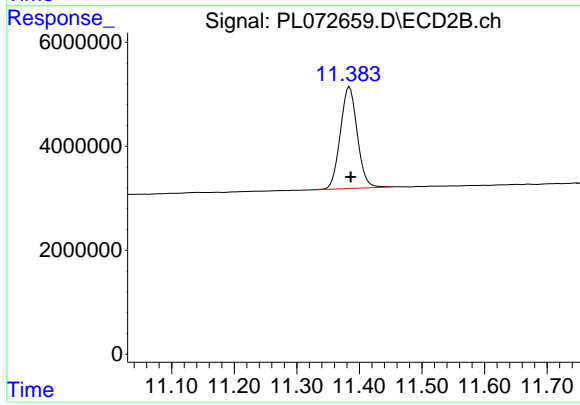
R.T.: 9.179 min
 Delta R.T.: -0.014 min
 Response: 17489
 Conc: 0.29 ng/ml



#28 Decachlorobiphenyl

R.T.: 10.320 min
Delta R.T.: 0.003 min
Response: 18148850
Conc: 23.97 ng/ml

Instrument :
ECD_L
ClientSampleId :



#28 Decachlorobiphenyl

R.T.: 11.384 min
Delta R.T.: -0.002 min
Response: 36866091
Conc: 23.25 ng/ml