

Data Path : Z:\pestpcbsrv\HPCHEM1\ECD_L\Data\PL021422\
 Data File : PL072656.D
 Signal(s) : Signal #1: ECD1A.ch Signal #2: ECD2B.ch
 Acq On : 14 Feb 2022 15:11
 Operator : AR\AJ
 Sample : N1470-01MSD
 Misc :
 ALS Vial : 14 Sample Multiplier: 1

Instrument :
 ECD_L
ClientSampleId :
 CTY2-WC-ROLLOFFMSD

Manual Integrations
APPROVED

Reviewed By :Abdul Mirza 02/15/2022
 Supervised By :Ankita Jodhani 02/15/2022

Integration File signal 1: autoint1.e
 Integration File signal 2: autoint2.e
 Quant Time: Feb 15 03:46:22 2022
 Quant Method : Z:\pestpcbsrv\HPCHEM1\ECD_L\methods\PL020722.M
 Quant Title : GC Extractables
 QLast Update : Tue Feb 08 05:14:10 2022
 Response via : Initial Calibration
 Integrator: ChemStation

Volume Inj. : 1 µl
 Signal #1 Phase : ZB-MR2 Signal #2 Phase: ZB-MR1
 Signal #1 Info : 30M x 0.32mm x0.2 Signal #2 Info : 30M x 0.32mm x0.5µm

Compound	RT#1	RT#2	Resp#1	Resp#2	ng/ml	ng/ml

System Monitoring Compounds						
1) SA Tetrachlo...	4.555	5.490	10235275	34879229	21.257	20.192
28) SA Decachlor...	10.315	11.382	18200125	36972168	24.041	23.315
Target Compounds						
2) A alpha-BHC	5.261	6.072	39814639	143.4E6	60.385	59.868
3) MA gamma-BHC...	5.684	6.468	39044453	135.3E6	62.125	58.769
4) MA Heptachlor	6.088	7.114	45798375	135.1E6	62.744m	59.338
5) MB Aldrin	6.414	7.483	41008642	129.8E6	63.515	60.727
6) B beta-BHC	6.072	6.728	11919654	57102856	48.104m	56.015
7) B delta-BHC	6.328	6.992	41268794	137.5E6	62.328	60.031m
8) B Heptachlo...	6.992	7.951	40572742	118.1E6	64.355	61.214
9) A Endosulfan I	7.393	8.356	38526384	107.9E6	65.851	61.703
10) B gamma-Chl...	7.269	8.222	41754597	120.6E6	65.915	62.334
11) B alpha-Chl...	7.338	8.301	41956034	118.2E6	65.888	62.210
12) B 4,4'-DDE	7.553	8.492	40876588	115.7E6	67.263	61.923
13) MA Dieldrin	7.680	8.645	42263978	118.0E6	66.926	63.290
14) MA Endrin	7.971	8.884	39077250	98884678	66.707	62.758
15) B Endosulfa...	8.284	9.121	39375577	101.6E6	64.720	60.457
16) A 4,4'-DDD	8.139	9.032	33666614	89315221	69.979	64.544
17) MA 4,4'-DDT	8.400	9.349	35935403	94298516	66.784	61.599
18) B Endrin al...	8.473	9.255	33101727	82548572	75.942	73.346
19) B Endosulfa...	8.704	9.494	39064899	95327210	65.644	63.722
20) A Methoxychlor	8.996	9.837	21653421	48700059	61.581	60.149
21) B Endrin ke...	9.221	9.990	45993036	103.0E6	66.921	64.644
22) Mirex	9.402	10.453	42555557	83694919	71.733	71.297

(f)=RT Delta > 1/2 Window (#)=Amounts differ by > 25% (m)=manual int.

Data Path : Z:\pestpcbsrv\HPCHEM1\ECD_L\Data\PL021422\
 Data File : PL072656.D
 Signal(s) : Signal #1: ECD1A.ch Signal #2: ECD2B.ch
 Acq On : 14 Feb 2022 15:11
 Operator : AR\AJ
 Sample : N1470-01MSD
 Misc :
 ALS Vial : 14 Sample Multiplier: 1

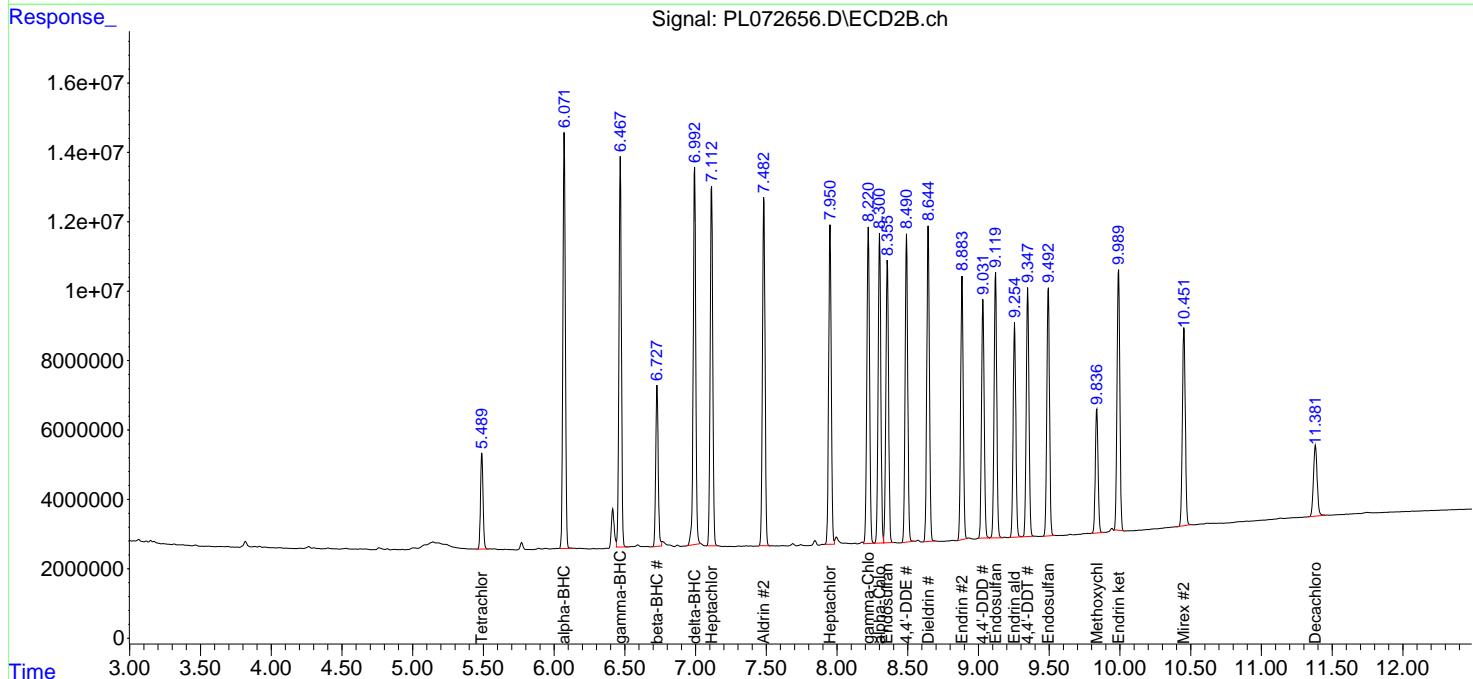
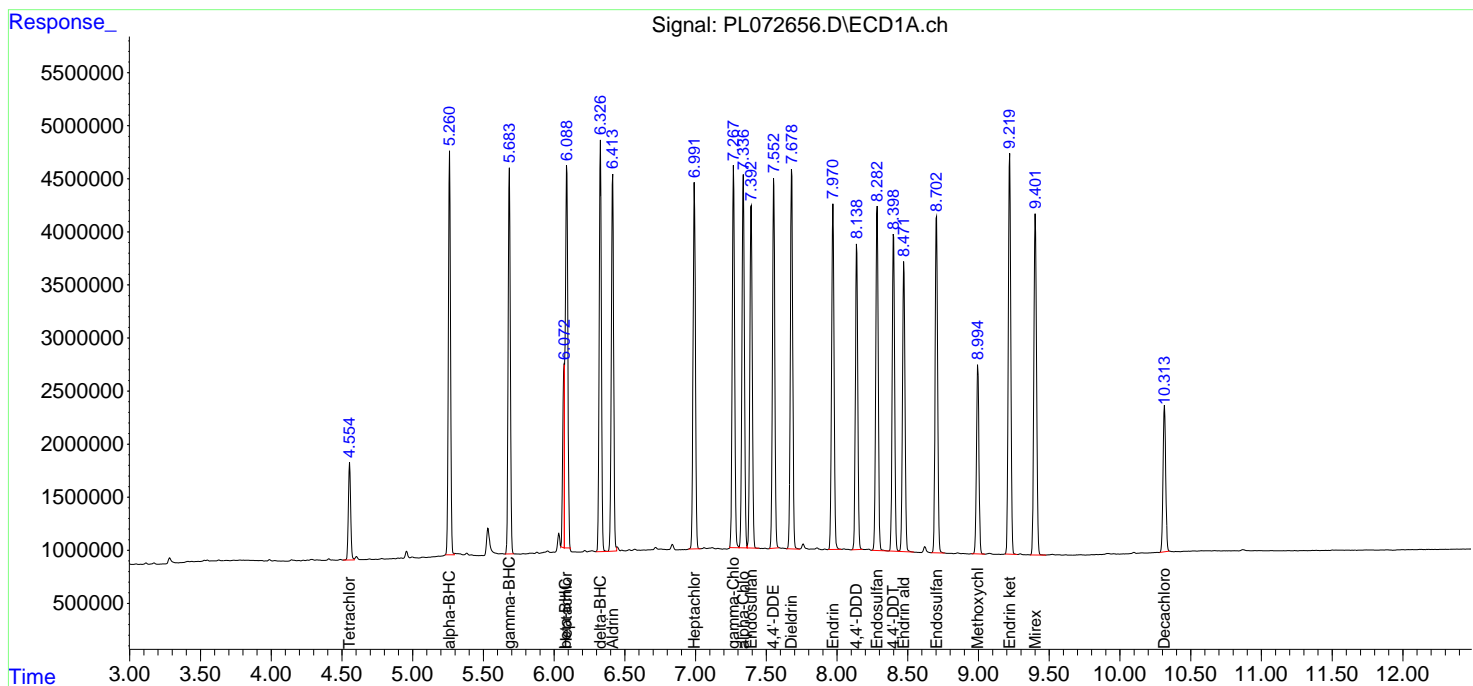
Instrument :
 ECD_L
 ClientSampleId :
 CTY2-WC-ROLLOFFMSD

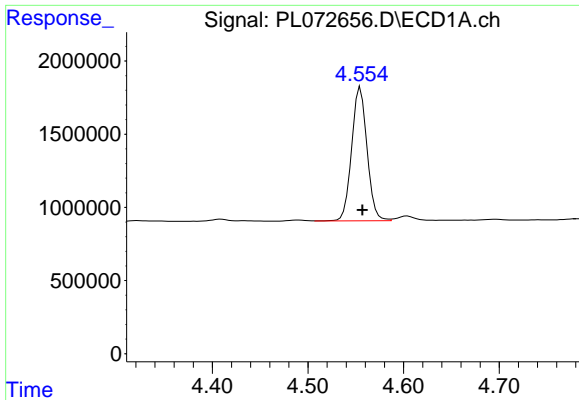
Manual Integrations
 APPROVED

Reviewed By :Abdul Mirza 02/15/2022
 Supervised By :Ankita Jodhani 02/15/2022

Integration File signal 1: autoint1.e
 Integration File signal 2: autoint2.e
 Quant Time: Feb 15 03:46:22 2022
 Quant Method : Z:\pestpcbsrv\HPCHEM1\ECD_L\methods\PL020722.M
 Quant Title : GC Extractables
 QLast Update : Tue Feb 08 05:14:10 2022
 Response via : Initial Calibration
 Integrator: ChemStation

Volume Inj. : 1 µl
 Signal #1 Phase : ZB-MR2 Signal #2 Phase: ZB-MR1
 Signal #1 Info : 30M x 0.32mm x0.2 Signal #2 Info : 30M x 0.32mm x0.5µm

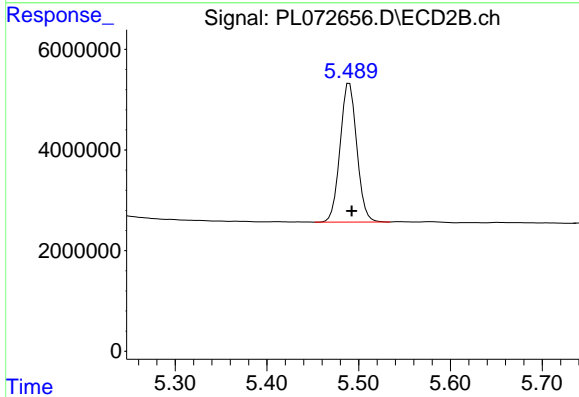




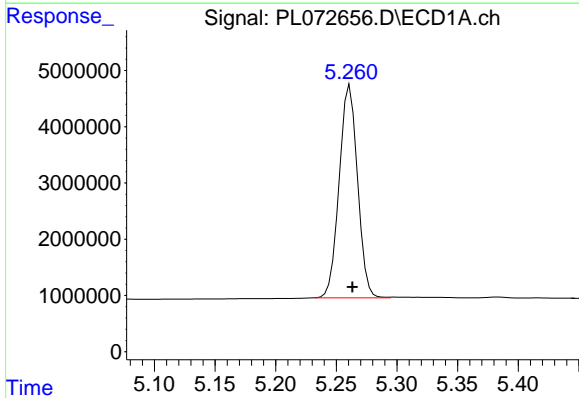
#1 Tetrachloro-m-xylene
 R.T.: 4.555 min
 Delta R.T.: -0.002 min
 Response: 10235275
 Conc: 21.26 ng/ml

Instrument : ECD_L
 Client Sample Id : CTY2-WC-ROLLOFFMSD

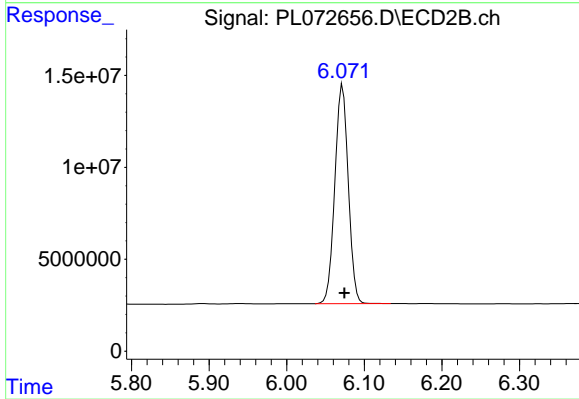
Manual Integrations
APPROVED
 Reviewed By :Abdul Mirza 02/15/2022
 Supervised By :Ankita Jodhani 02/15/2022



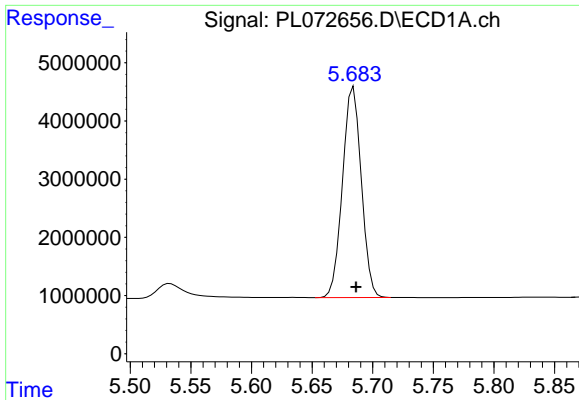
#1 Tetrachloro-m-xylene
 R.T.: 5.490 min
 Delta R.T.: -0.002 min
 Response: 34879229
 Conc: 20.19 ng/ml



#2 alpha-BHC
 R.T.: 5.261 min
 Delta R.T.: -0.002 min
 Response: 39814639
 Conc: 60.38 ng/ml



#2 alpha-BHC
 R.T.: 6.072 min
 Delta R.T.: -0.002 min
 Response: 143367786
 Conc: 59.87 ng/ml

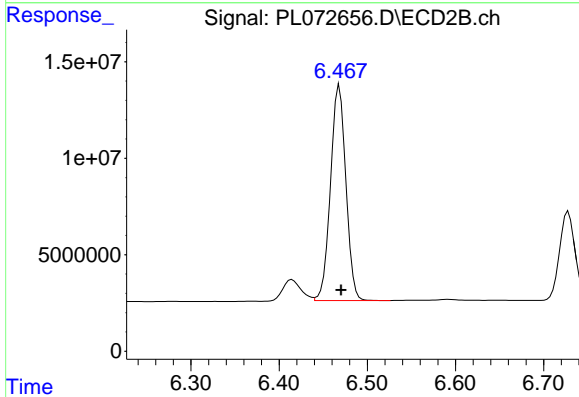


#3 gamma-BHC (Lindane)
 R.T.: 5.684 min
 Delta R.T.: -0.002 min
 Response: 39044453
 Conc: 62.12 ng/ml

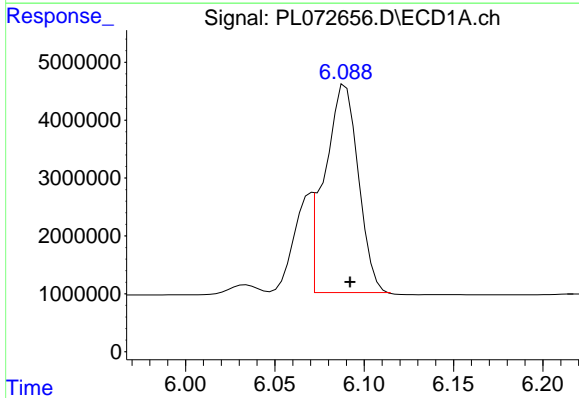
Instrument :
 ECD_L
 ClientSampleId :
 CTY2-WC-ROLLOFFMSD

Manual Integrations
 APPROVED

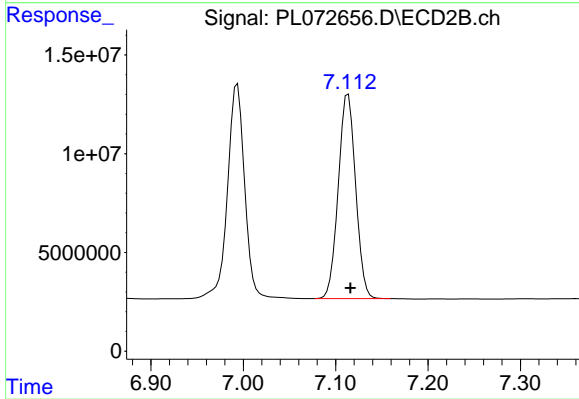
Reviewed By :Abdul Mirza 02/15/2022
 Supervised By :Ankita Jodhani 02/15/2022



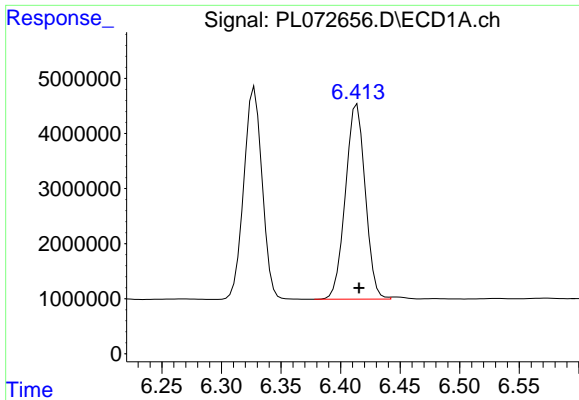
#3 gamma-BHC (Lindane)
 R.T.: 6.468 min
 Delta R.T.: -0.002 min
 Response: 135312656
 Conc: 58.77 ng/ml



#4 Heptachlor
 R.T.: 6.088 min
 Delta R.T.: -0.004 min
 Response: 45798375
 Conc: 62.74 ng/ml m



#4 Heptachlor
 R.T.: 7.114 min
 Delta R.T.: -0.002 min
 Response: 135102857
 Conc: 59.34 ng/ml

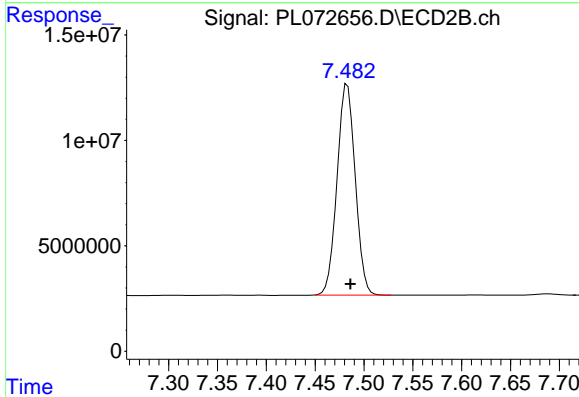


#5 Aldrin
 R.T.: 6.414 min
 Delta R.T.: -0.002 min
 Response: 41008642
 Conc: 63.51 ng/ml

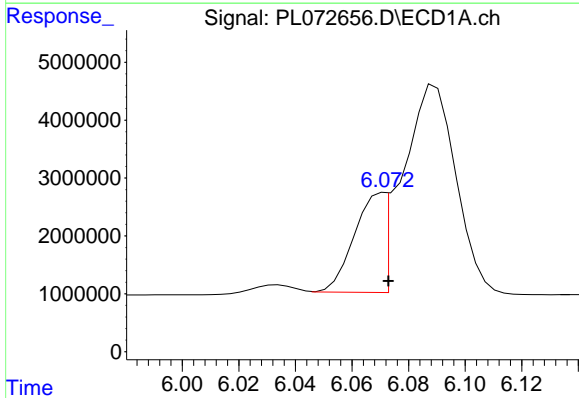
Instrument :
 ECD_L
 ClientSampleId :
 CTY2-WC-ROLLOFFMSD

Manual Integrations
 APPROVED

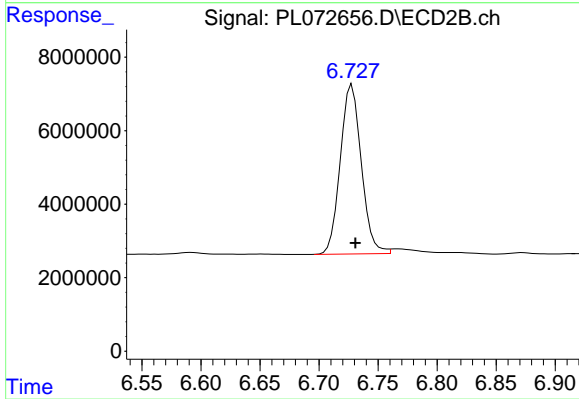
Reviewed By :Abdul Mirza 02/15/2022
 Supervised By :Ankita Jodhani 02/15/2022



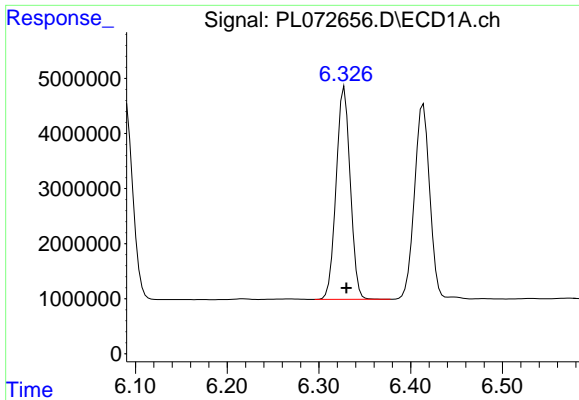
#5 Aldrin
 R.T.: 7.483 min
 Delta R.T.: -0.003 min
 Response: 129821840
 Conc: 60.73 ng/ml



#6 beta-BHC
 R.T.: 6.072 min
 Delta R.T.: -0.001 min
 Response: 11919654
 Conc: 48.10 ng/ml m



#6 beta-BHC
 R.T.: 6.728 min
 Delta R.T.: -0.003 min
 Response: 57102856
 Conc: 56.01 ng/ml



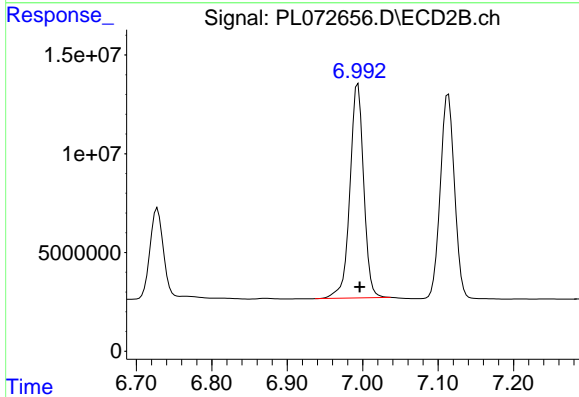
#7 delta-BHC

R.T.: 6.328 min
 Delta R.T.: -0.002 min
 Response: 41268794
 Conc: 62.33 ng/ml

Instrument :
 ECD_L
 ClientSampleId :
 CTY2-WC-ROLLOFFMSD

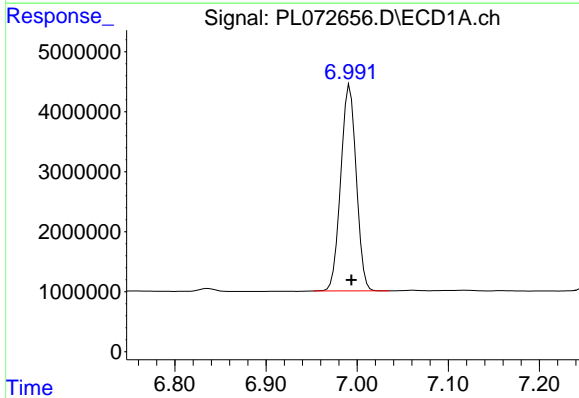
Manual Integrations
 APPROVED

Reviewed By :Abdul Mirza 02/15/2022
 Supervised By :Ankita Jodhani 02/15/2022



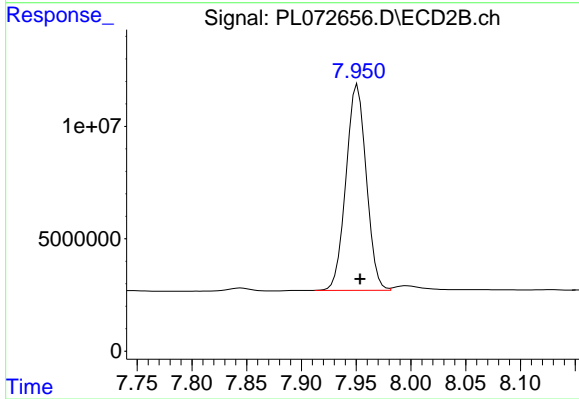
#7 delta-BHC

R.T.: 6.992 min
 Delta R.T.: -0.004 min
 Response: 137531977
 Conc: 60.03 ng/ml m



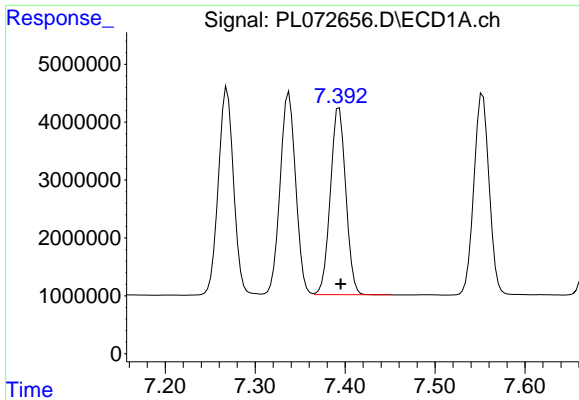
#8 Heptachlor epoxide

R.T.: 6.992 min
 Delta R.T.: -0.002 min
 Response: 40572742
 Conc: 64.36 ng/ml



#8 Heptachlor epoxide

R.T.: 7.951 min
 Delta R.T.: -0.002 min
 Response: 118099145
 Conc: 61.21 ng/ml



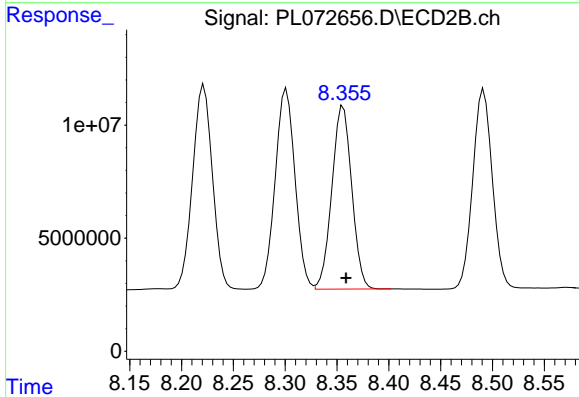
#9 Endosulfan I

R.T.: 7.393 min
 Delta R.T.: -0.002 min
 Response: 38526384
 Conc: 65.85 ng/ml

Instrument :
 ECD_L
 ClientSampleId :
 CTY2-WC-ROLLOFFMSD

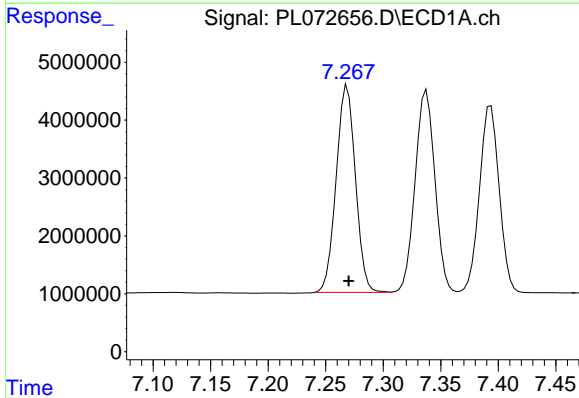
Manual Integrations
 APPROVED

Reviewed By :Abdul Mirza 02/15/2022
 Supervised By :Ankita Jodhani 02/15/2022



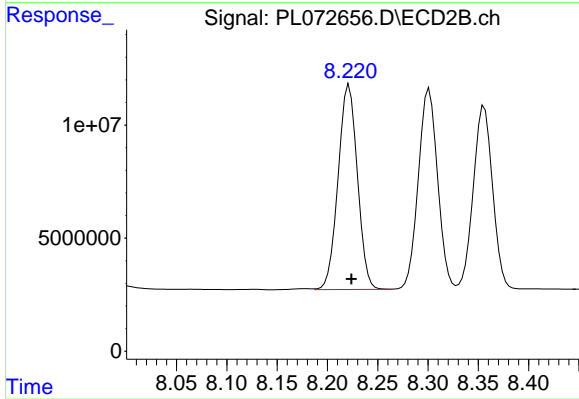
#9 Endosulfan I

R.T.: 8.356 min
 Delta R.T.: -0.003 min
 Response: 107948634
 Conc: 61.70 ng/ml



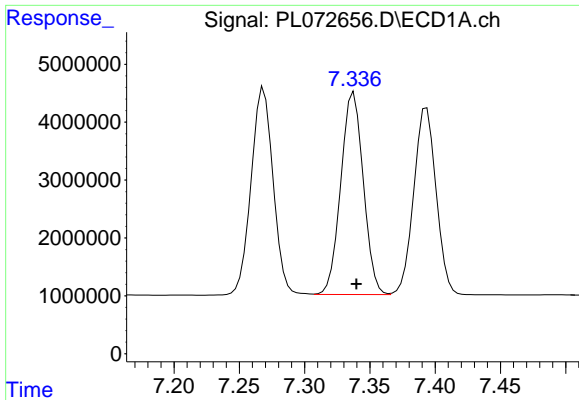
#10 gamma-Chlordane

R.T.: 7.269 min
 Delta R.T.: -0.001 min
 Response: 41754597
 Conc: 65.91 ng/ml



#10 gamma-Chlordane

R.T.: 8.222 min
 Delta R.T.: -0.002 min
 Response: 120569079
 Conc: 62.33 ng/ml



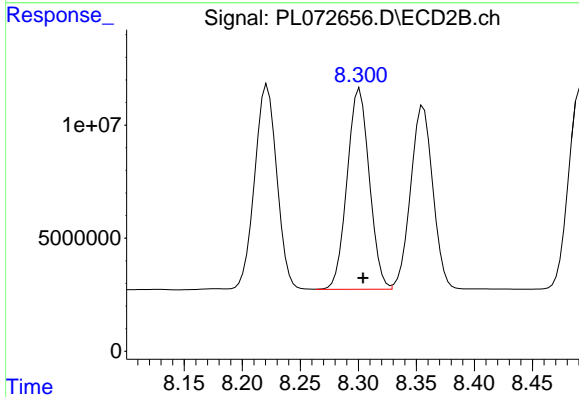
#11 alpha-Chlordane

R.T.: 7.338 min
 Delta R.T.: -0.002 min
 Response: 41956034
 Conc: 65.89 ng/ml

Instrument :
 ECD_L
 ClientSampleId :
 CTY2-WC-ROLLOFFMSD

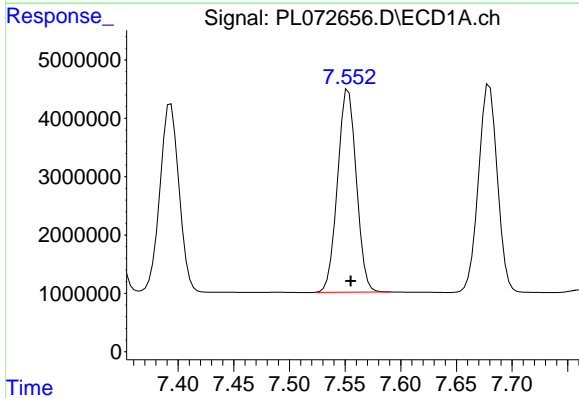
Manual Integrations
 APPROVED

Reviewed By :Abdul Mirza 02/15/2022
 Supervised By :Ankita Jodhani 02/15/2022



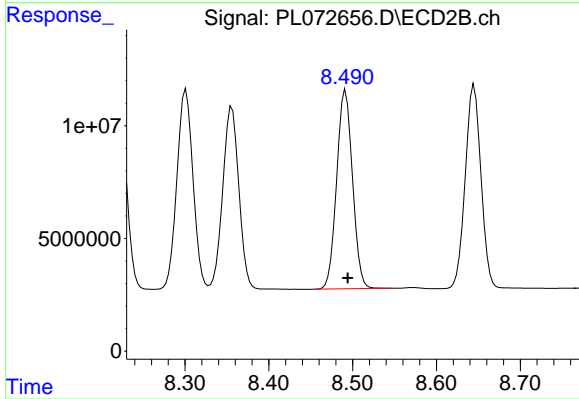
#11 alpha-Chlordane

R.T.: 8.301 min
 Delta R.T.: -0.003 min
 Response: 118196727
 Conc: 62.21 ng/ml



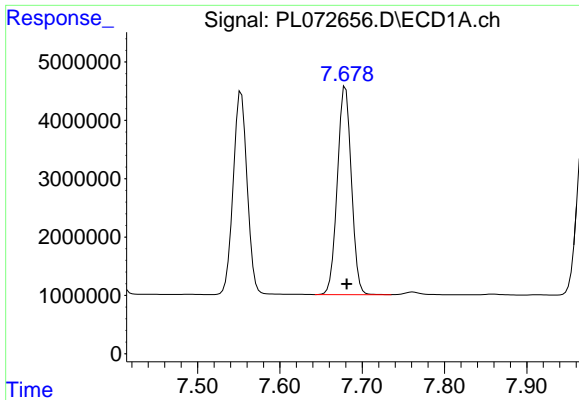
#12 4,4'-DDE

R.T.: 7.553 min
 Delta R.T.: -0.002 min
 Response: 40876588
 Conc: 67.26 ng/ml



#12 4,4'-DDE

R.T.: 8.492 min
 Delta R.T.: -0.003 min
 Response: 115739478
 Conc: 61.92 ng/ml

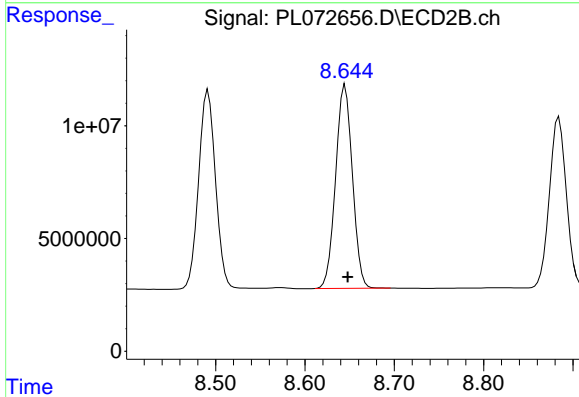


#13 Dieldrin
 R.T.: 7.680 min
 Delta R.T.: -0.002 min
 Response: 42263978
 Conc: 66.93 ng/ml

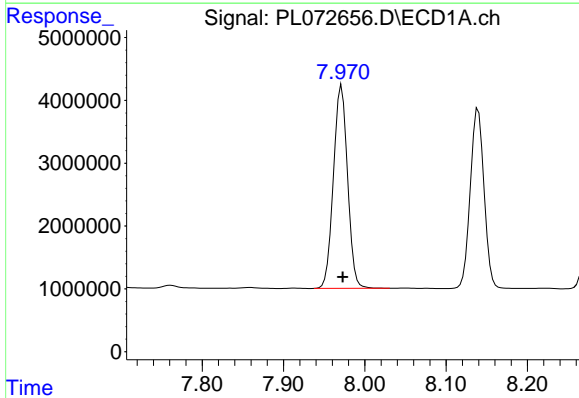
Instrument :
 ECD_L
 ClientSampleId :
 CTY2-WC-ROLLOFFMSD

Manual Integrations
 APPROVED

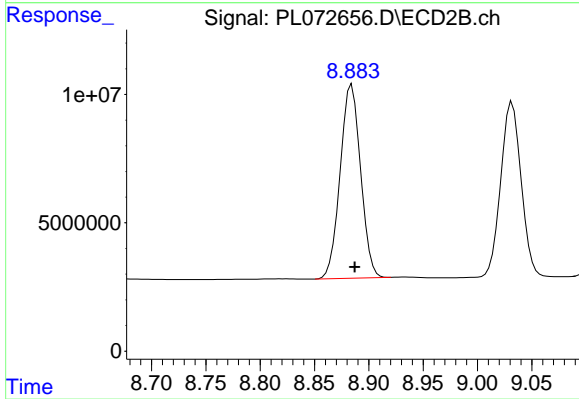
Reviewed By :Abdul Mirza 02/15/2022
 Supervised By :Ankita Jodhani 02/15/2022



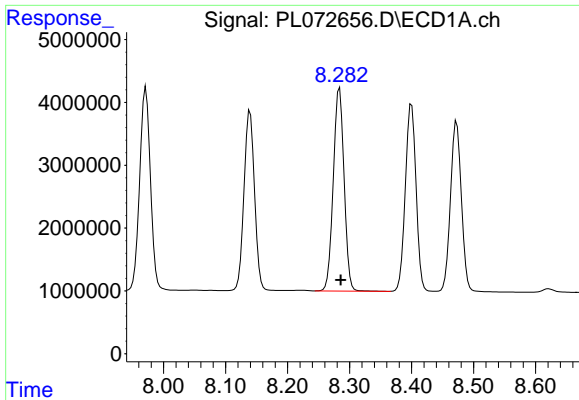
#13 Dieldrin
 R.T.: 8.645 min
 Delta R.T.: -0.003 min
 Response: 117950309
 Conc: 63.29 ng/ml



#14 Endrin
 R.T.: 7.971 min
 Delta R.T.: -0.001 min
 Response: 39077250
 Conc: 66.71 ng/ml



#14 Endrin
 R.T.: 8.884 min
 Delta R.T.: -0.003 min
 Response: 98884678
 Conc: 62.76 ng/ml



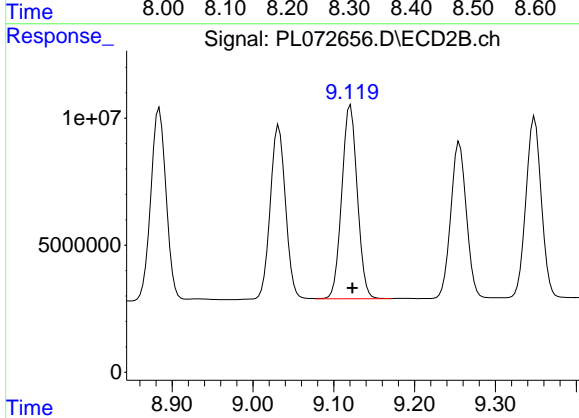
#15 Endosulfan II

R.T.: 8.284 min
 Delta R.T.: -0.002 min
 Response: 39375577
 Conc: 64.72 ng/ml

Instrument : ECD_L
 ClientSampleId : CTY2-WC-ROLLOFFMSD

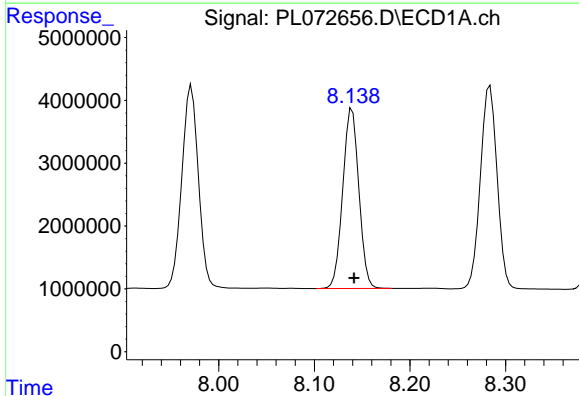
Manual Integrations
 APPROVED

Reviewed By :Abdul Mirza 02/15/2022
 Supervised By :Ankita Jodhani 02/15/2022



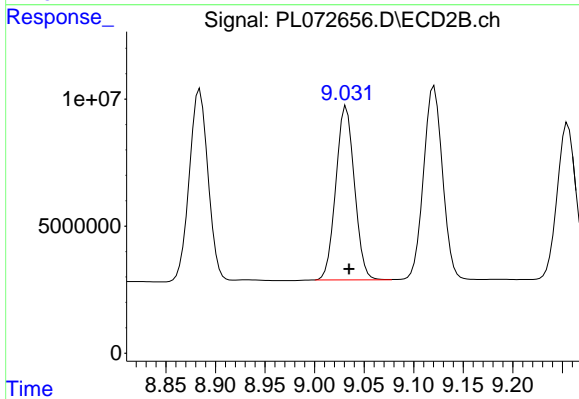
#15 Endosulfan II

R.T.: 9.121 min
 Delta R.T.: -0.002 min
 Response: 101648491
 Conc: 60.46 ng/ml



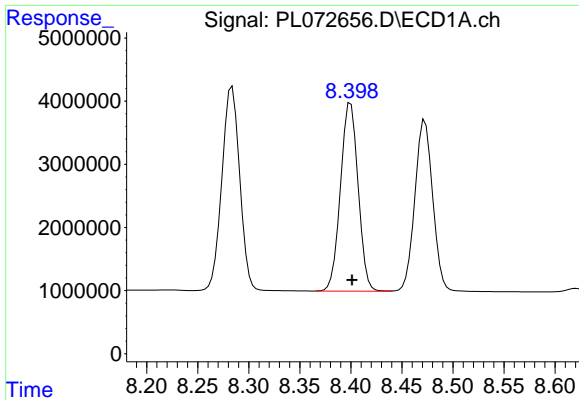
#16 4,4'-DDD

R.T.: 8.139 min
 Delta R.T.: -0.002 min
 Response: 33666614
 Conc: 69.98 ng/ml



#16 4,4'-DDD

R.T.: 9.032 min
 Delta R.T.: -0.003 min
 Response: 89315221
 Conc: 64.54 ng/ml



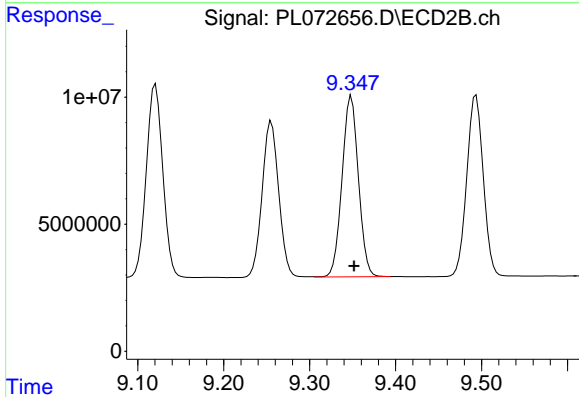
#17 4,4'-DDT

R.T.: 8.400 min
 Delta R.T.: -0.001 min
 Response: 35935403
 Conc: 66.78 ng/ml

Instrument : ECD_L
 ClientSampleId : CTY2-WC-ROLLOFFMSD

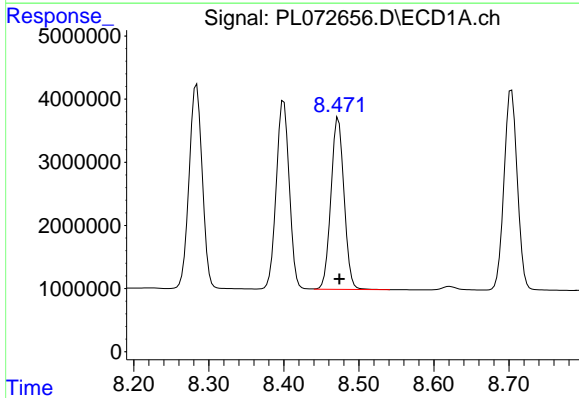
Manual Integrations
 APPROVED

Reviewed By :Abdul Mirza 02/15/2022
 Supervised By :Ankita Jodhani 02/15/2022



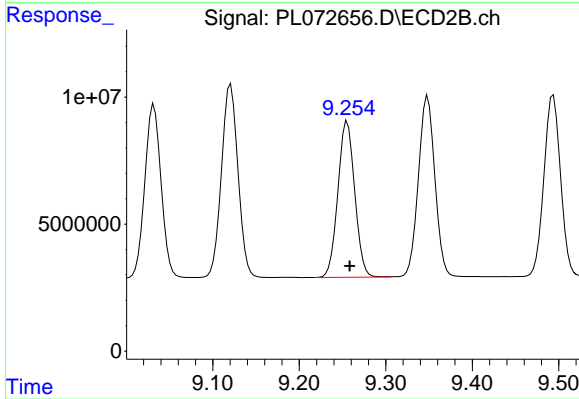
#17 4,4'-DDT

R.T.: 9.349 min
 Delta R.T.: -0.003 min
 Response: 94298516
 Conc: 61.60 ng/ml



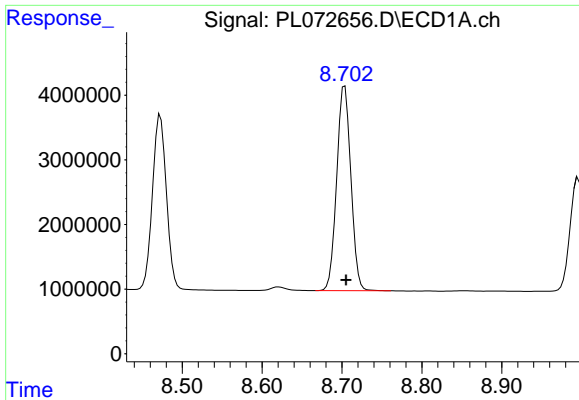
#18 Endrin aldehyde

R.T.: 8.473 min
 Delta R.T.: -0.002 min
 Response: 33101727
 Conc: 75.94 ng/ml



#18 Endrin aldehyde

R.T.: 9.255 min
 Delta R.T.: -0.003 min
 Response: 82548572
 Conc: 73.35 ng/ml



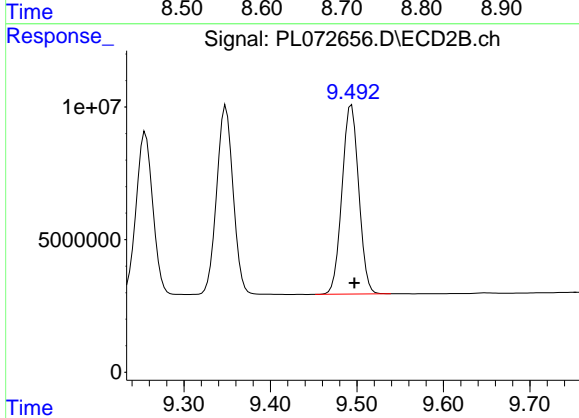
#19 Endosulfan Sulfate

R.T.: 8.704 min
 Delta R.T.: -0.002 min
 Response: 39064899
 Conc: 65.64 ng/ml

Instrument :
 ECD_L
 ClientSampleId :
 CTY2-WC-ROLLOFFMSD

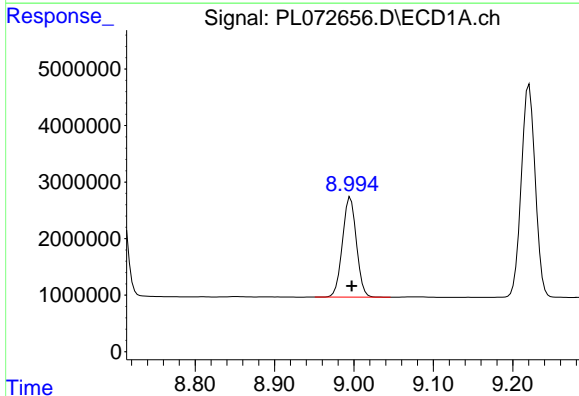
Manual Integrations
 APPROVED

Reviewed By :Abdul Mirza 02/15/2022
 Supervised By :Ankita Jodhani 02/15/2022



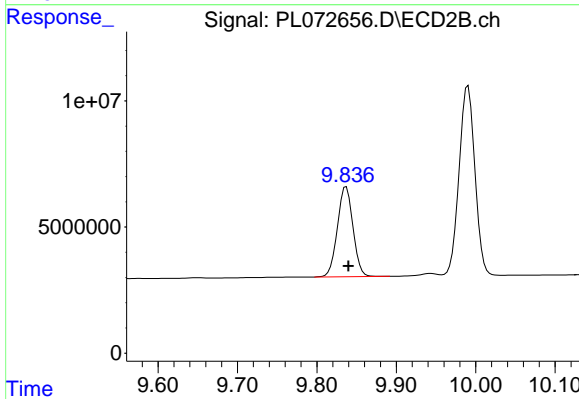
#19 Endosulfan Sulfate

R.T.: 9.494 min
 Delta R.T.: -0.003 min
 Response: 95327210
 Conc: 63.72 ng/ml



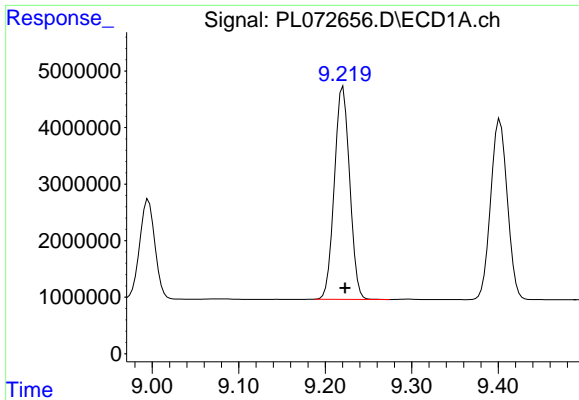
#20 Methoxychlor

R.T.: 8.996 min
 Delta R.T.: -0.002 min
 Response: 21653421
 Conc: 61.58 ng/ml



#20 Methoxychlor

R.T.: 9.837 min
 Delta R.T.: -0.002 min
 Response: 48700059
 Conc: 60.15 ng/ml



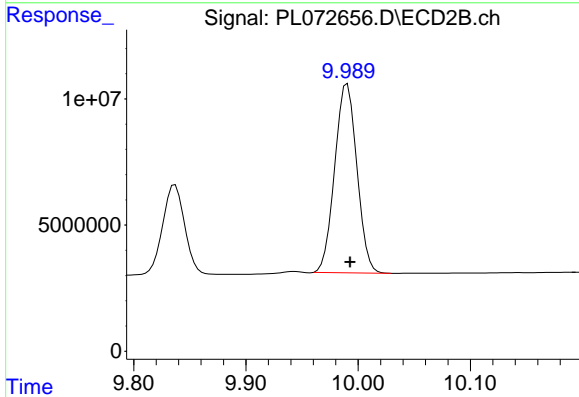
#21 Endrin ketone

R.T.: 9.221 min
 Delta R.T.: -0.002 min
 Response: 45993036
 Conc: 66.92 ng/ml

Instrument :
 ECD_L
 ClientSampleId :
 CTY2-WC-ROLLOFFMSD

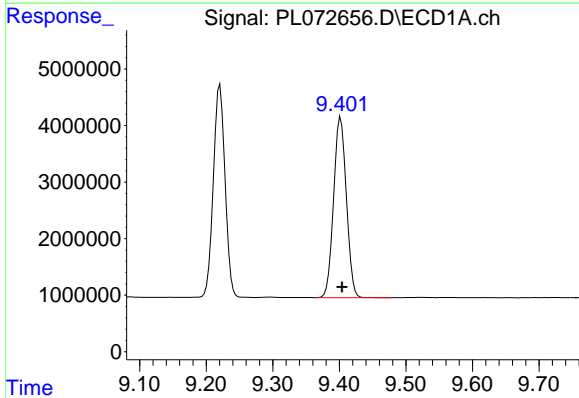
Manual Integrations
 APPROVED

Reviewed By :Abdul Mirza 02/15/2022
 Supervised By :Ankita Jodhani 02/15/2022



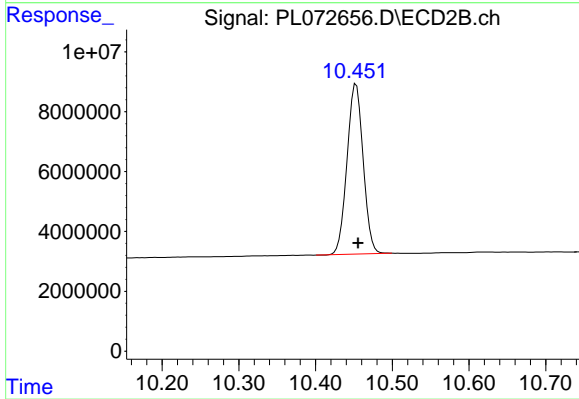
#21 Endrin ketone

R.T.: 9.990 min
 Delta R.T.: -0.003 min
 Response: 102996593
 Conc: 64.64 ng/ml



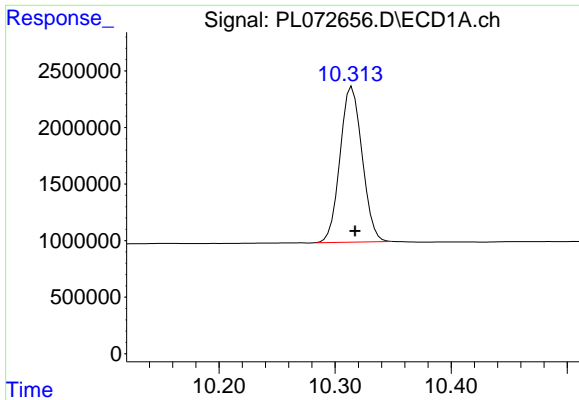
#22 Mirex

R.T.: 9.402 min
 Delta R.T.: -0.002 min
 Response: 42555557
 Conc: 71.73 ng/ml



#22 Mirex

R.T.: 10.453 min
 Delta R.T.: -0.003 min
 Response: 83694919
 Conc: 71.30 ng/ml



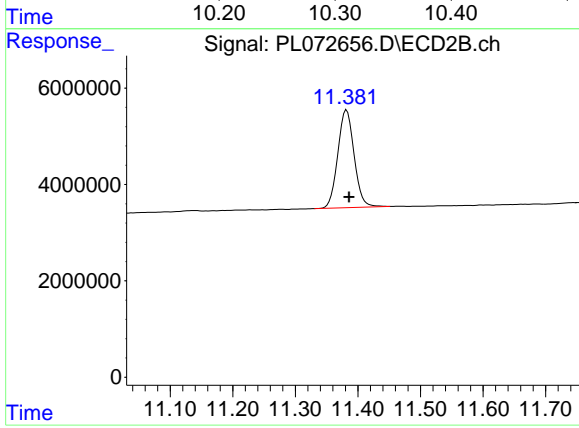
#28 Decachlorobiphenyl

R.T.: 10.315 min
Delta R.T.: -0.002 min
Response: 18200125
Conc: 24.04 ng/ml

Instrument :
ECD_L
ClientSampleId :
CTY2-WC-ROLLOFFMSD

Manual Integrations
APPROVED

Reviewed By :Abdul Mirza 02/15/2022
Supervised By :Ankita Jodhani 02/15/2022



#28 Decachlorobiphenyl

R.T.: 11.382 min
Delta R.T.: -0.004 min
Response: 36972168
Conc: 23.31 ng/ml