

Data Path : Z:\pestpcbsrv\HPCHEM1\ECD_L\Data\PL021522\
 Data File : PL072724.D
 Signal(s) : Signal #1: ECD1A.ch Signal #2: ECD2B.ch
 Acq On : 15 Feb 2022 20:35
 Operator : AR\AJ
 Sample : I.BLK
 Misc :
 ALS Vial : 2 Sample Multiplier: 1

Instrument :
 ECD_L
 ClientSampleId :

Integration File signal 1: autoint1.e
 Integration File signal 2: autoint2.e
 Quant Time: Feb 16 01:58:52 2022
 Quant Method : Z:\pestpcbsrv\HPCHEM1\ECD_L\methods\PL020722.M
 Quant Title : GC Extractables
 QLast Update : Tue Feb 08 05:14:10 2022
 Response via : Initial Calibration
 Integrator: ChemStation

Volume Inj. : 1 µl
 Signal #1 Phase : ZB-MR1 Signal #2 Phase: ZB-MR1
 Signal #1 Info : 30M x 0.32mm x0.2 Signal #2 Info : 30M x 0.32mm x0.5µm

	Compound	RT#1	RT#2	Resp#1	Resp#2	ng/ml	ng/ml

System Monitoring Compounds							
1)	SA Tetrachlo...	4.553	5.489	9117392	32036293	18.935	18.546
28)	SA Decachlor...	10.310	11.377	16347250	34190837	21.593	21.561
Target Compounds							
2)	A alpha-BHC	5.271	0.000	95338	0	0.145	N.D. #
4)	MA Heptachlor	6.070f	0.000	93823	0	0.129	N.D. #
5)	MB Aldrin	6.423	0.000	12030	0	0.019	N.D. #
6)	B beta-BHC	6.070	0.000	93823	0	0.379	N.D. #
7)	B delta-BHC	6.330	7.011f	52286	1395870	0.079	0.609 #
8)	B Heptachlo...	6.986	7.959	62908	879332	0.100	0.456 #
9)	A Endosulfan I	7.401	8.372	22461	122596	0.038	0.070 #
10)	B gamma-Chl...	7.297f	8.215	28418	2593105	0.045	1.341 #
11)	B alpha-Chl...	7.350	8.331f	9399	1055057	0.015	0.555 #
12)	B 4,4'-DDE	7.571f	0.000	37480	0	0.062	N.D. #
13)	MA Dieldrin	7.677	0.000	377701	0	0.598	N.D. #
14)	MA Endrin	7.969	0.000	164042	0	0.280	N.D. #
15)	B Endosulfa...	0.000	9.141f	0	456180	N.D.	0.271 #
17)	MA 4,4'-DDT	8.394	9.359	65477	260449	0.122	0.170 #
18)	B Endrin al...	0.000	9.278f	0	47290	N.D.	0.042 #
19)	B Endosulfa...	8.700	9.490	32570	131341	0.055	0.088 #
21)	B Endrin ke...	0.000	10.013f	0	812903	N.D.	0.510 #
24)	Chlordane-2	6.554f	0.000	30084	0	1.190	N.D. #
25)	Chlordane-3	7.297f	8.215	28418	2593105	0.422	8.677 #
26)	Chlordane-4	7.350	8.331f	9399	1055057	0.128	2.957 #

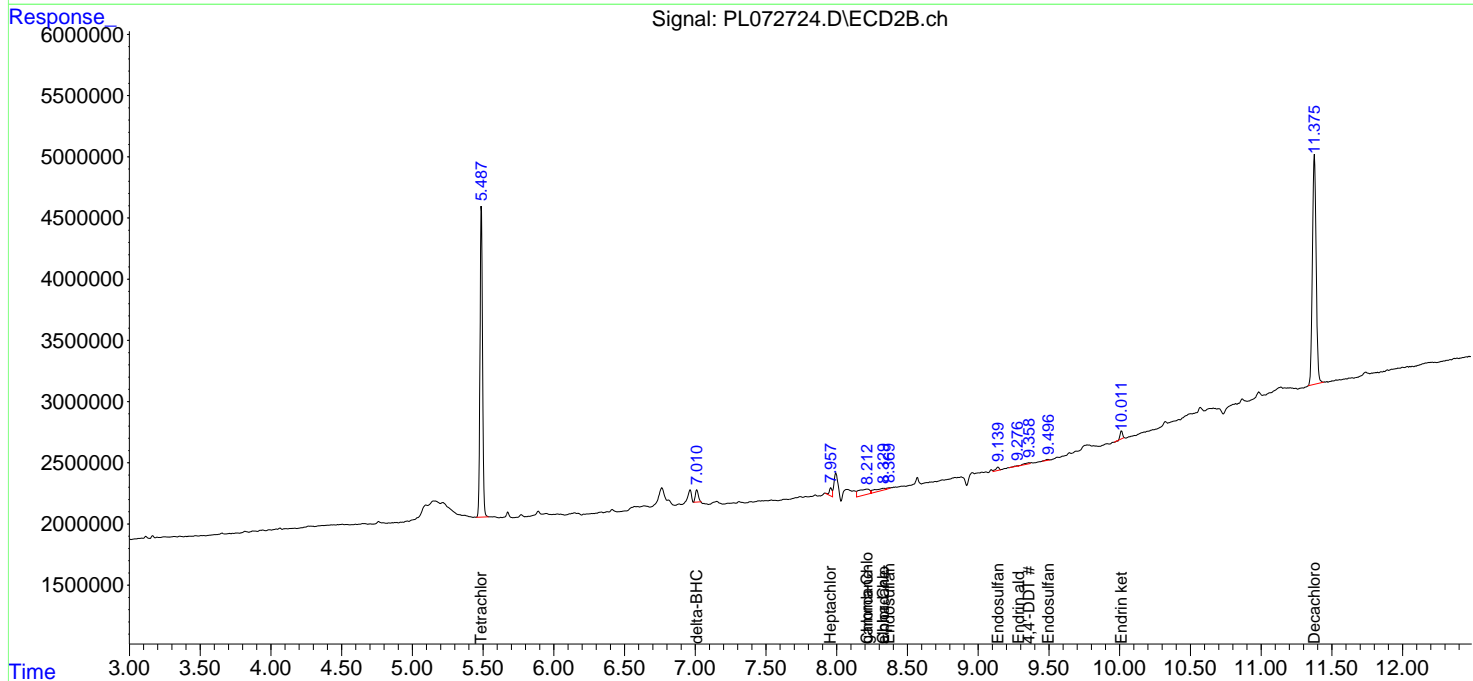
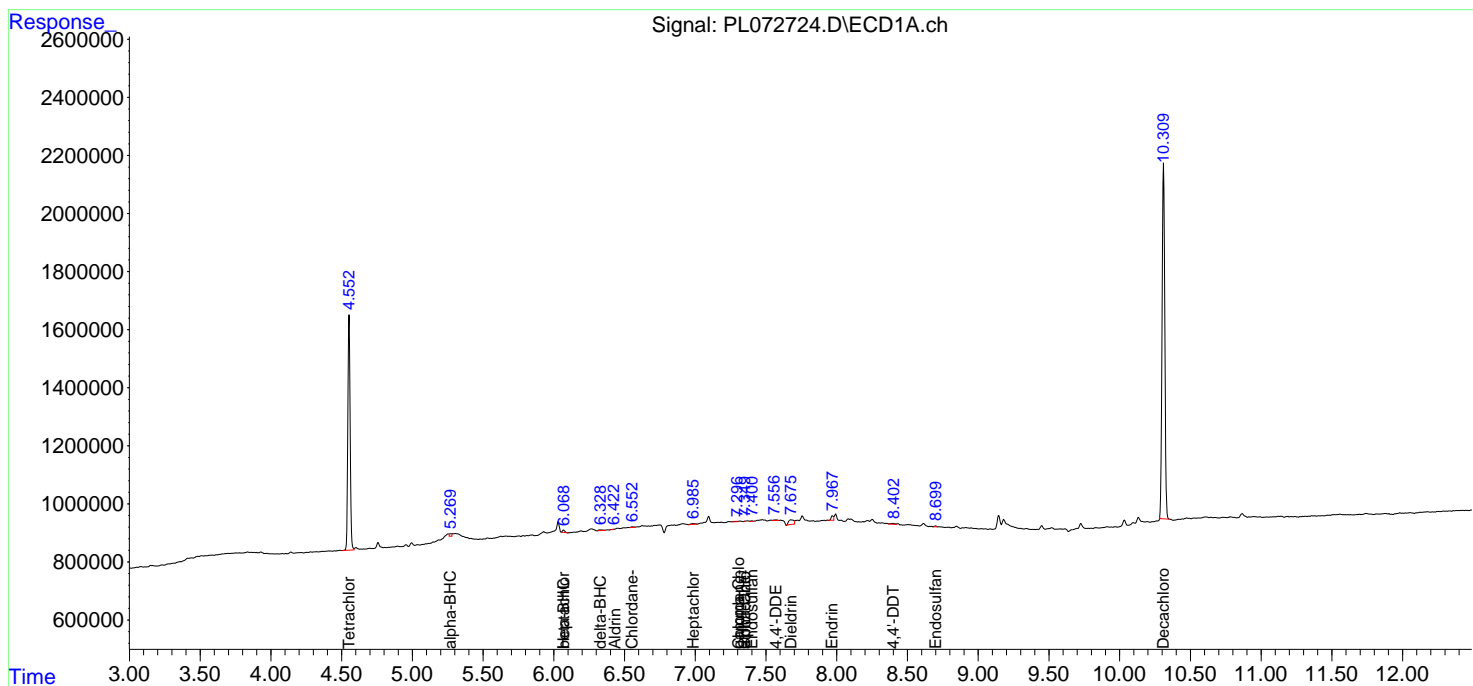
(f)=RT Delta > 1/2 Window (#)=Amounts differ by > 25% (m)=manual int.

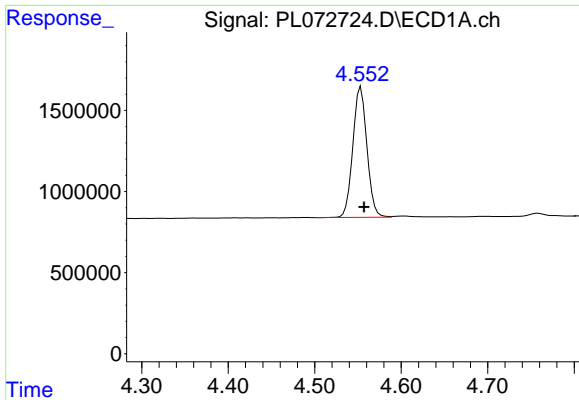
Data Path : Z:\pestpcbsrv\HPCHEM1\ECD_L\Data\PL021522\
 Data File : PL072724.D
 Signal(s) : Signal #1: ECD1A.ch Signal #2: ECD2B.ch
 Acq On : 15 Feb 2022 20:35
 Operator : AR\AJ
 Sample : I.BLK
 Misc :
 ALS Vial : 2 Sample Multiplier: 1

Instrument :
 ECD_L
 ClientSampleId :

Integration File signal 1: autoint1.e
 Integration File signal 2: autoint2.e
 Quant Time: Feb 16 01:58:52 2022
 Quant Method : Z:\pestpcbsrv\HPCHEM1\ECD_L\methods\PL020722.M
 Quant Title : GC Extractables
 QLast Update : Tue Feb 08 05:14:10 2022
 Response via : Initial Calibration
 Integrator: ChemStation

Volume Inj. : 1 µl
 Signal #1 Phase : ZB-MR2 Signal #2 Phase: ZB-MR1
 Signal #1 Info : 30M x 0.32mm x0.2 Signal #2 Info : 30M x 0.32mm x0.5µm

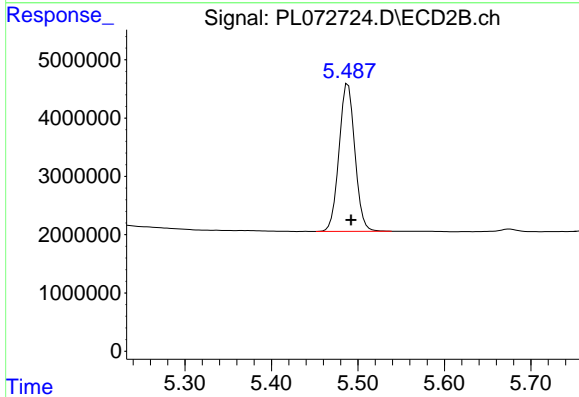




#1 Tetrachloro-m-xylene

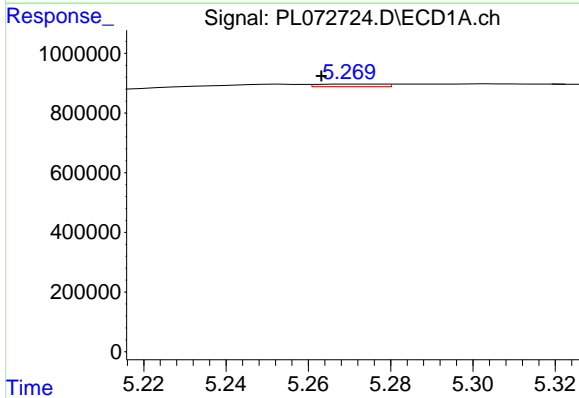
R.T.: 4.553 min
 Delta R.T.: -0.004 min
 Response: 9117392
 Conc: 18.94 ng/ml

Instrument :
 ECD_L
 ClientSampleId :



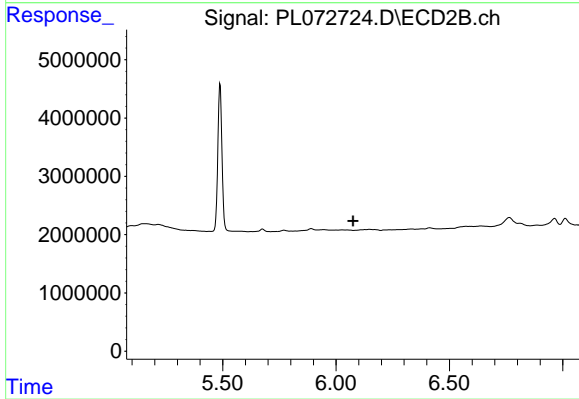
#1 Tetrachloro-m-xylene

R.T.: 5.489 min
 Delta R.T.: -0.003 min
 Response: 32036293
 Conc: 18.55 ng/ml



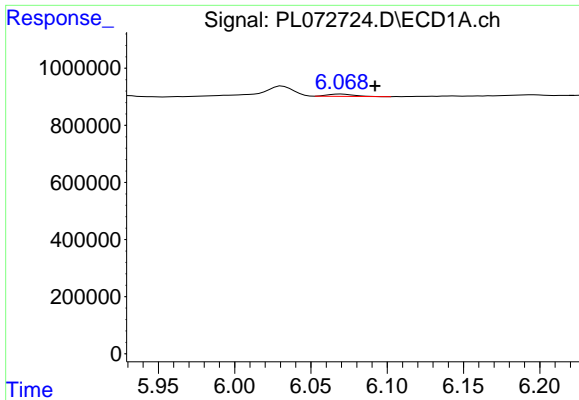
#2 alpha-BHC

R.T.: 5.271 min
 Delta R.T.: 0.007 min
 Response: 95338
 Conc: 0.14 ng/ml



#2 alpha-BHC

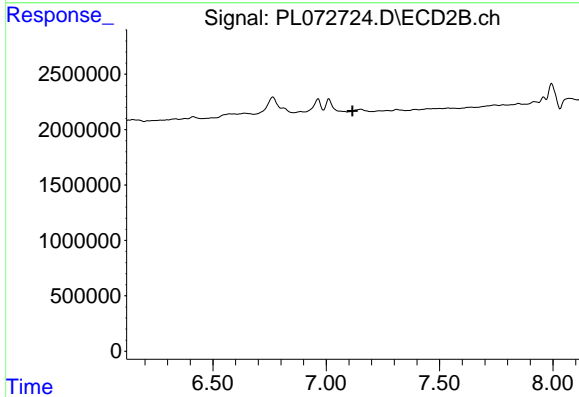
R.T.: 0.000 min
 Exp R.T. : 6.075 min
 Response: 0
 Conc: N.D.



#4 Heptachlor

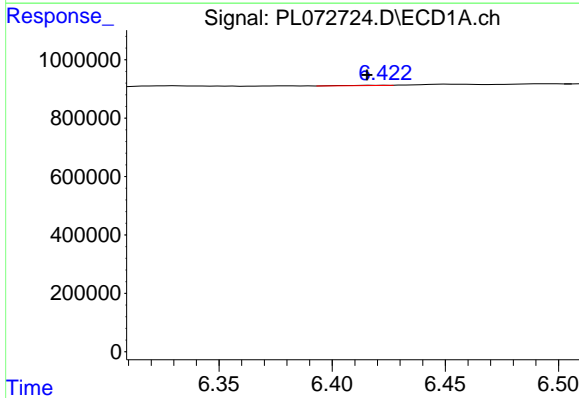
R.T.: 6.070 min
 Delta R.T.: -0.022 min
 Response: 93823
 Conc: 0.13 ng/ml

Instrument :
 ECD_L
 ClientSampleId :



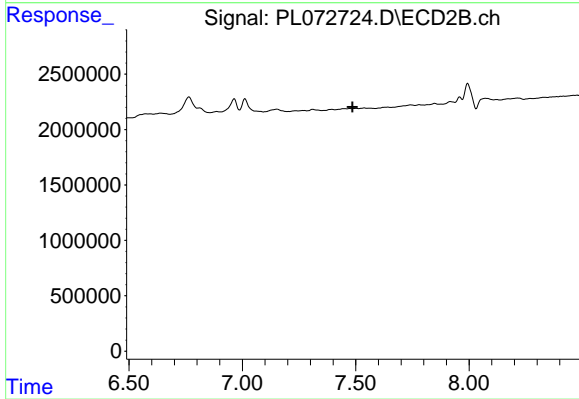
#4 Heptachlor

R.T.: 0.000 min
 Exp R.T. : 7.116 min
 Response: 0
 Conc: N.D.



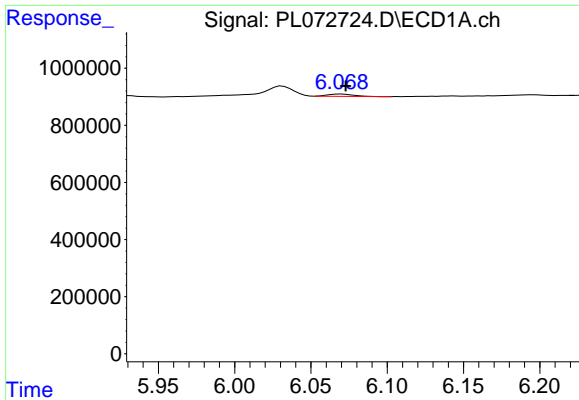
#5 Aldrin

R.T.: 6.423 min
 Delta R.T.: 0.008 min
 Response: 12030
 Conc: 0.02 ng/ml



#5 Aldrin

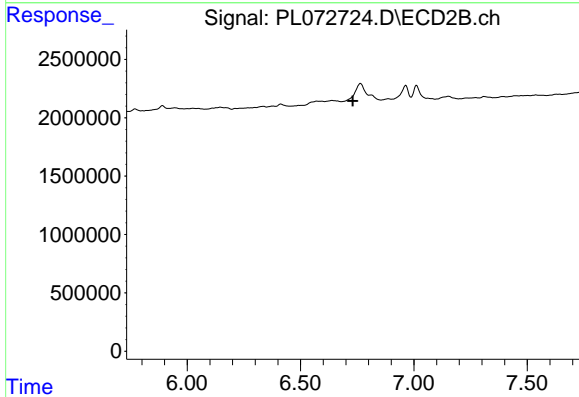
R.T.: 0.000 min
 Exp R.T. : 7.486 min
 Response: 0
 Conc: N.D.



#6 beta-BHC

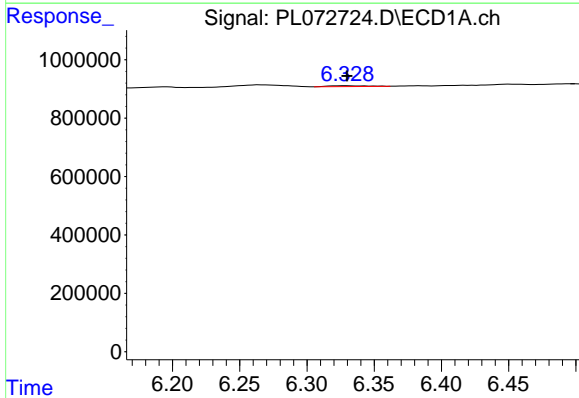
R.T.: 6.070 min
 Delta R.T.: -0.003 min
 Response: 93823
 Conc: 0.38 ng/ml

Instrument :
 ECD_L
 ClientSampleId :



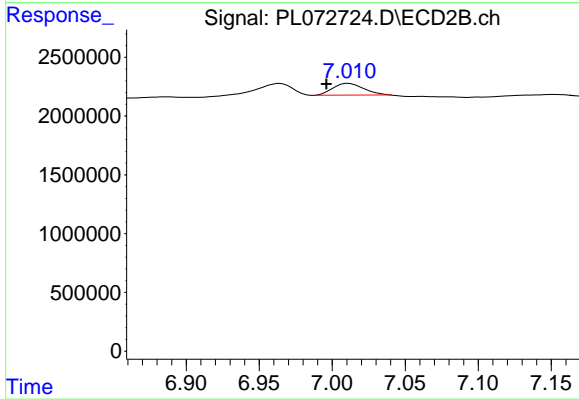
#6 beta-BHC

R.T.: 0.000 min
 Exp R.T. : 6.731 min
 Response: 0
 Conc: N.D.



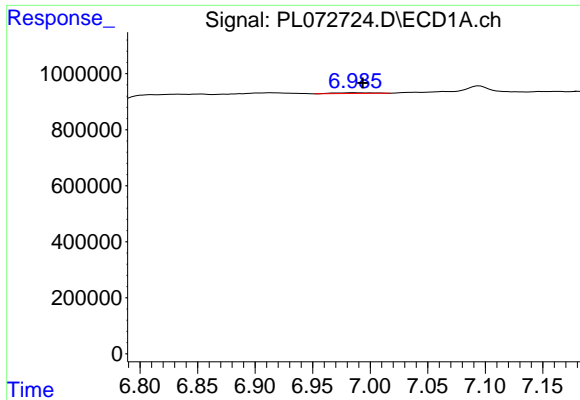
#7 delta-BHC

R.T.: 6.330 min
 Delta R.T.: 0.000 min
 Response: 52286
 Conc: 0.08 ng/ml



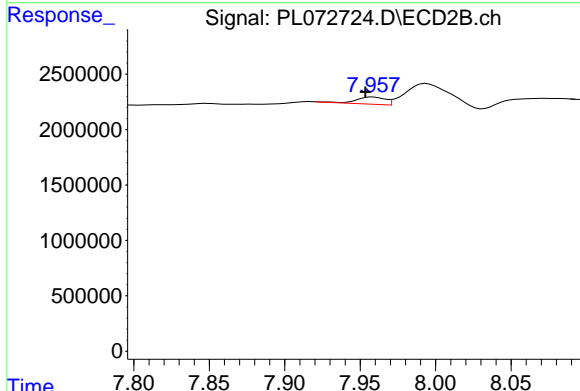
#7 delta-BHC

R.T.: 7.011 min
 Delta R.T.: 0.015 min
 Response: 1395870
 Conc: 0.61 ng/ml

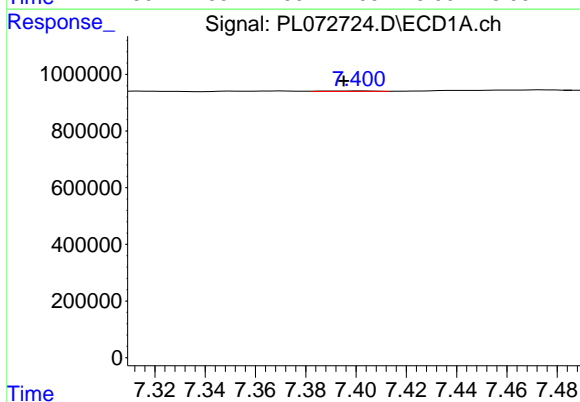


#8 Heptachlor epoxide
 R.T.: 6.986 min
 Delta R.T.: -0.008 min
 Response: 62908
 Conc: 0.10 ng/ml

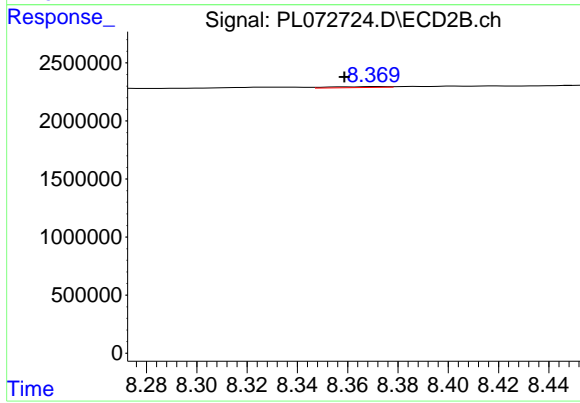
Instrument :
 ECD_L
 ClientSampleId :



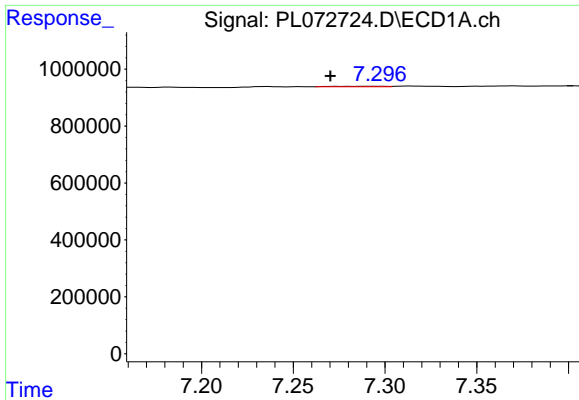
#8 Heptachlor epoxide
 R.T.: 7.959 min
 Delta R.T.: 0.005 min
 Response: 879332
 Conc: 0.46 ng/ml



#9 Endosulfan I
 R.T.: 7.401 min
 Delta R.T.: 0.006 min
 Response: 22461
 Conc: 0.04 ng/ml



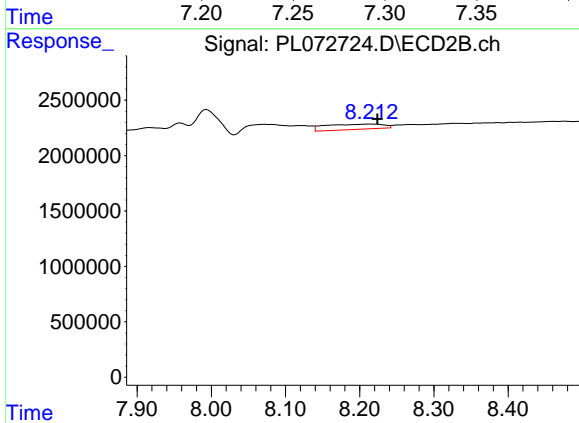
#9 Endosulfan I
 R.T.: 8.372 min
 Delta R.T.: 0.013 min
 Response: 122596
 Conc: 0.07 ng/ml



#10 gamma-Chlordane

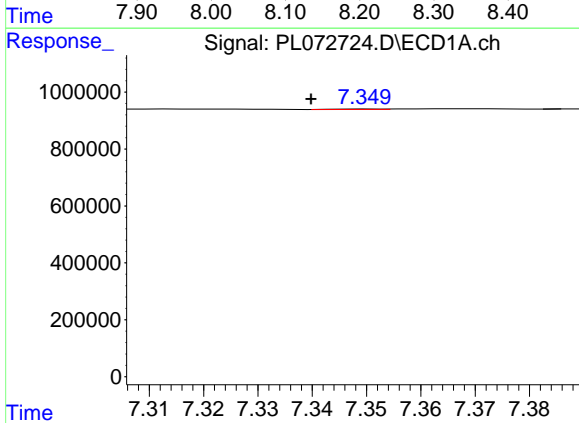
R.T.: 7.297 min
 Delta R.T.: 0.027 min
 Response: 28418
 Conc: 0.04 ng/ml

Instrument :
 ECD_L
 ClientSampleId :



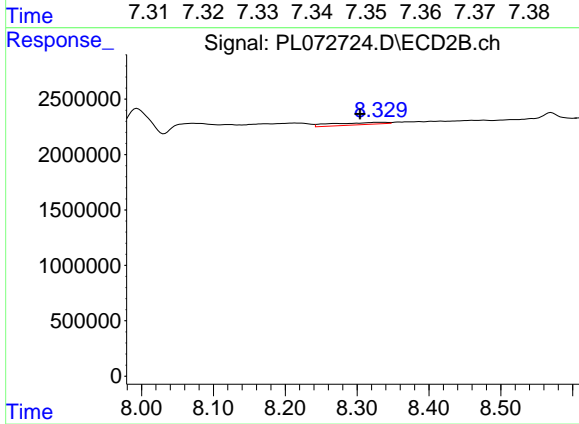
#10 gamma-Chlordane

R.T.: 8.215 min
 Delta R.T.: -0.009 min
 Response: 2593105
 Conc: 1.34 ng/ml



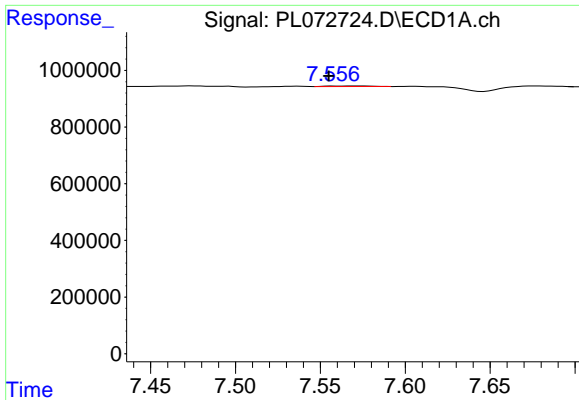
#11 alpha-Chlordane

R.T.: 7.350 min
 Delta R.T.: 0.010 min
 Response: 9399
 Conc: 0.01 ng/ml



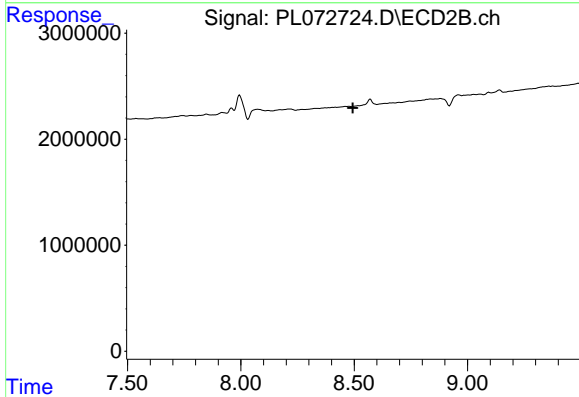
#11 alpha-Chlordane

R.T.: 8.331 min
 Delta R.T.: 0.027 min
 Response: 1055057
 Conc: 0.56 ng/ml

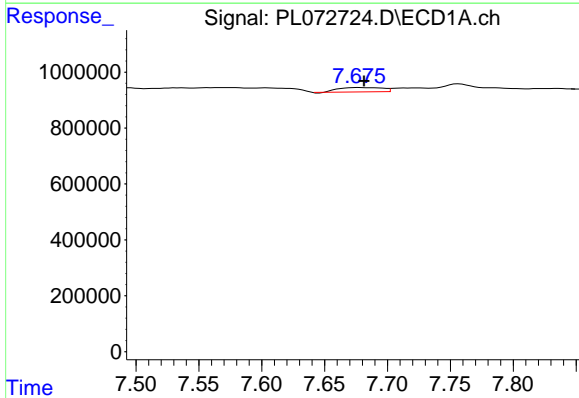


#12 4,4'-DDE
 R.T.: 7.571 min
 Delta R.T.: 0.016 min
 Response: 37480
 Conc: 0.06 ng/ml

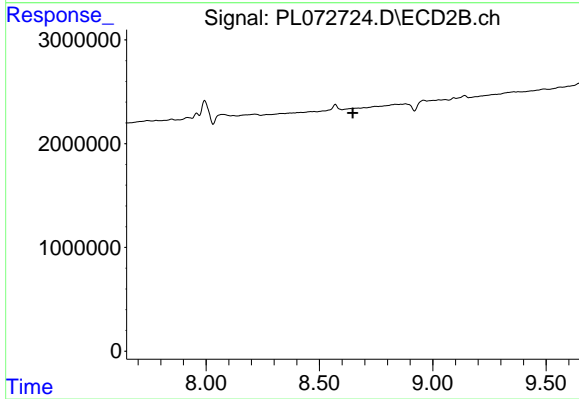
Instrument :
 ECD_L
 ClientSampleId :



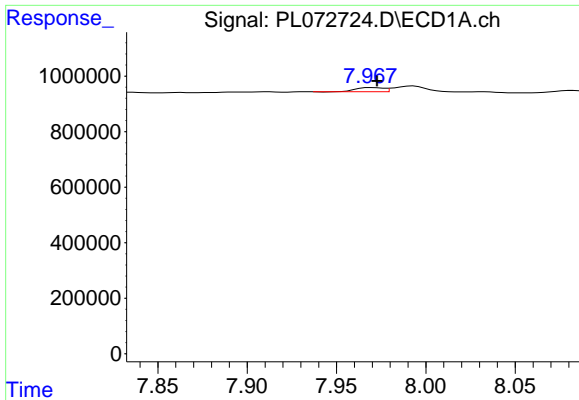
#12 4,4'-DDE
 R.T.: 0.000 min
 Exp R.T. : 8.494 min
 Response: 0
 Conc: N.D.



#13 Dieldrin
 R.T.: 7.677 min
 Delta R.T.: -0.005 min
 Response: 377701
 Conc: 0.60 ng/ml



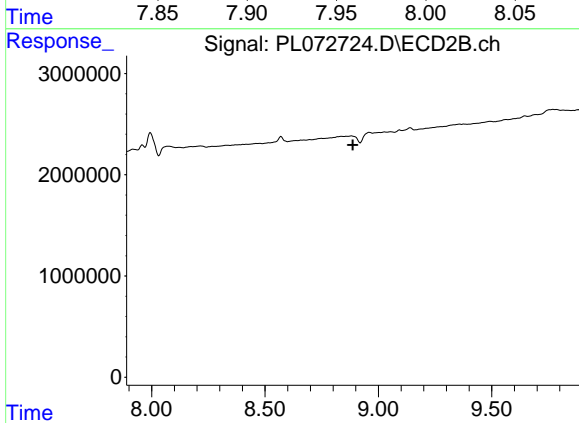
#13 Dieldrin
 R.T.: 0.000 min
 Exp R.T. : 8.648 min
 Response: 0
 Conc: N.D.



#14 Endrin

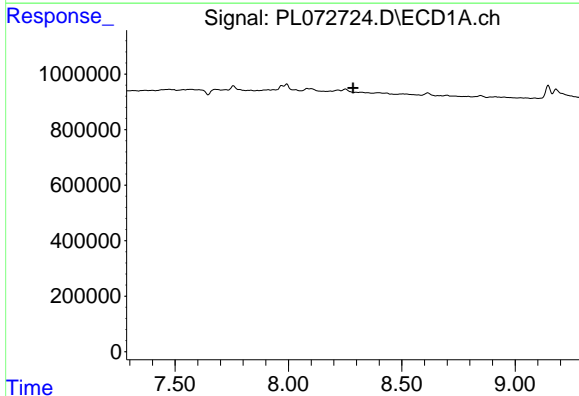
R.T.: 7.969 min
 Delta R.T.: -0.003 min
 Response: 164042
 Conc: 0.28 ng/ml

Instrument :
 ECD_L
 ClientSampleId :



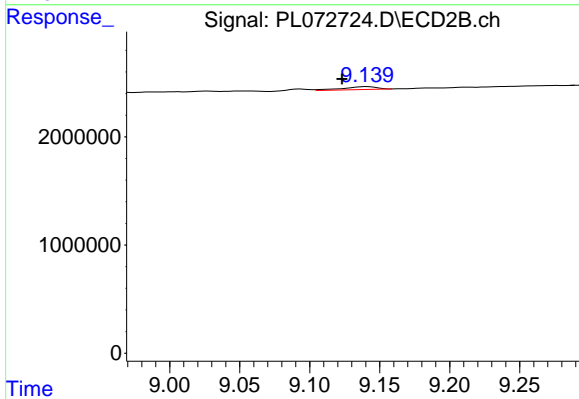
#14 Endrin

R.T.: 0.000 min
 Exp R.T. : 8.887 min
 Response: 0
 Conc: N.D.



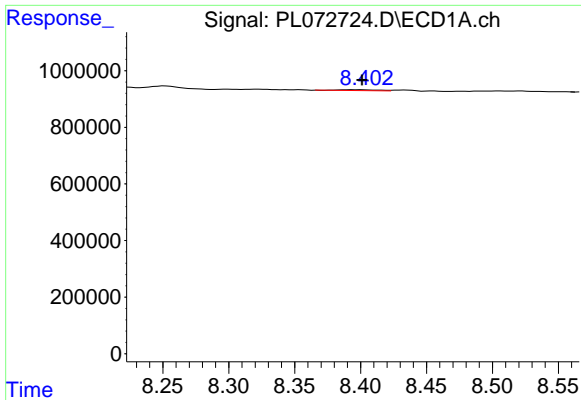
#15 Endosulfan II

R.T.: 0.000 min
 Exp R.T. : 8.286 min
 Response: 0
 Conc: N.D.



#15 Endosulfan II

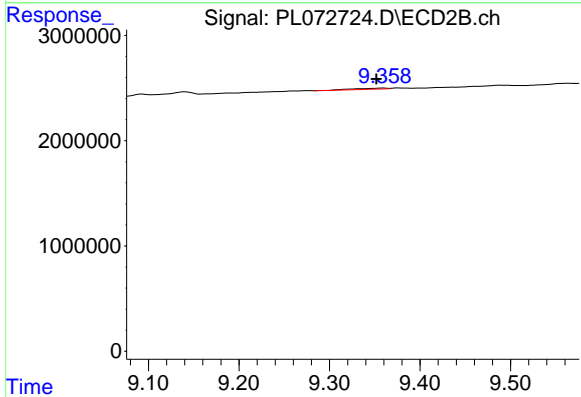
R.T.: 9.141 min
 Delta R.T.: 0.018 min
 Response: 456180
 Conc: 0.27 ng/ml



#17 4,4'-DDT

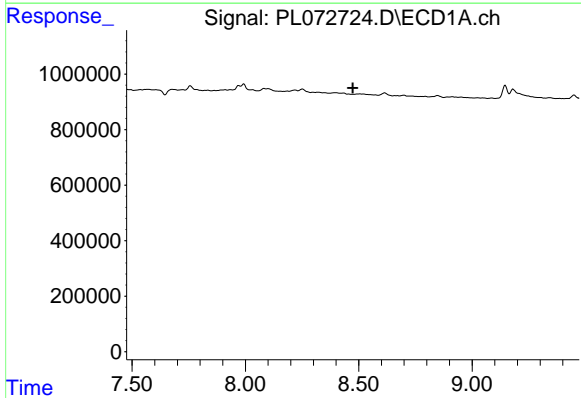
R.T.: 8.394 min
 Delta R.T.: -0.008 min
 Response: 65477
 Conc: 0.12 ng/ml

Instrument :
 ECD_L
 ClientSampleId :



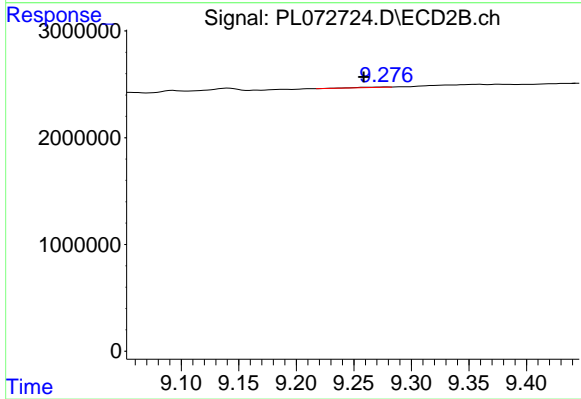
#17 4,4'-DDT

R.T.: 9.359 min
 Delta R.T.: 0.008 min
 Response: 260449
 Conc: 0.17 ng/ml



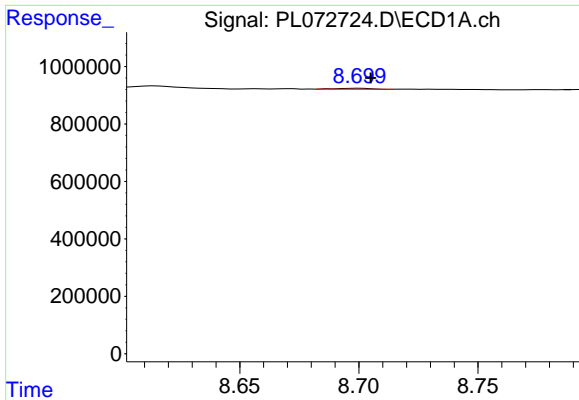
#18 Endrin aldehyde

R.T.: 0.000 min
 Exp R.T. : 8.474 min
 Response: 0
 Conc: N.D.



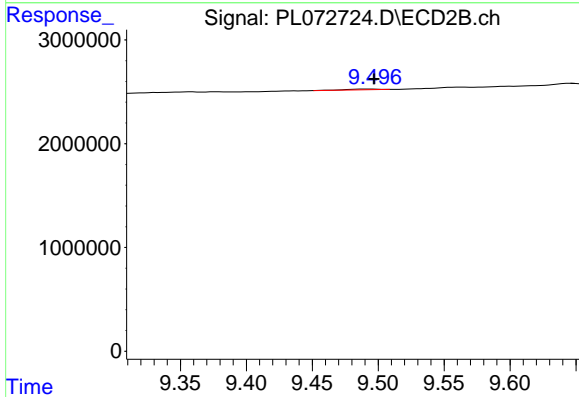
#18 Endrin aldehyde

R.T.: 9.278 min
 Delta R.T.: 0.019 min
 Response: 47290
 Conc: 0.04 ng/ml

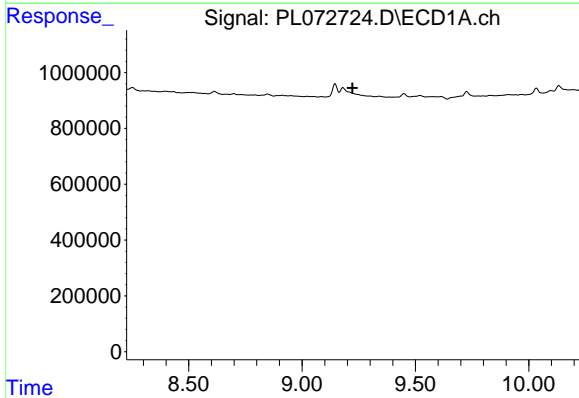


#19 Endosulfan Sulfate
 R.T.: 8.700 min
 Delta R.T.: -0.005 min
 Response: 32570
 Conc: 0.05 ng/ml

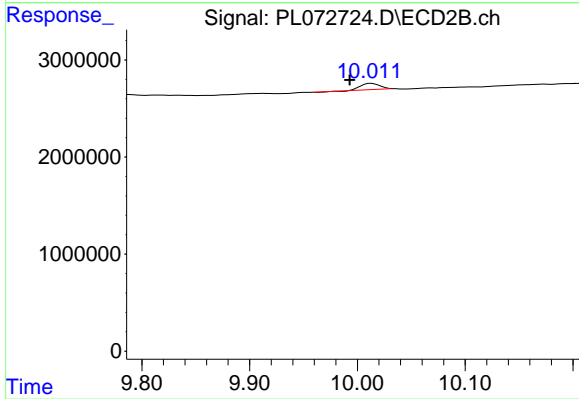
Instrument :
 ECD_L
 ClientSampleId :



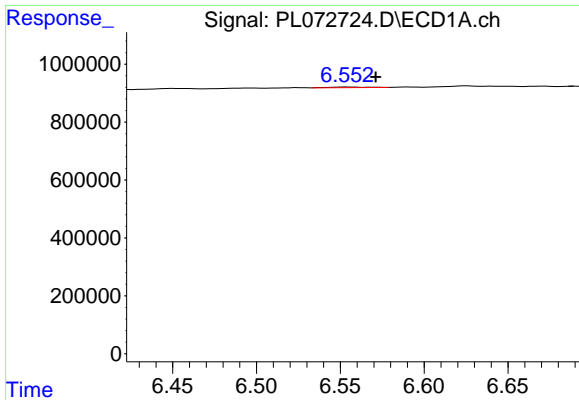
#19 Endosulfan Sulfate
 R.T.: 9.490 min
 Delta R.T.: -0.007 min
 Response: 131341
 Conc: 0.09 ng/ml



#21 Endrin ketone
 R.T.: 0.000 min
 Exp R.T. : 9.223 min
 Response: 0
 Conc: N.D.



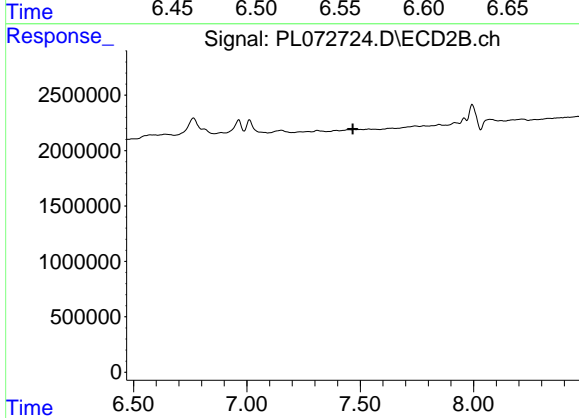
#21 Endrin ketone
 R.T.: 10.013 min
 Delta R.T.: 0.020 min
 Response: 812903
 Conc: 0.51 ng/ml



#24 Chlordane-2

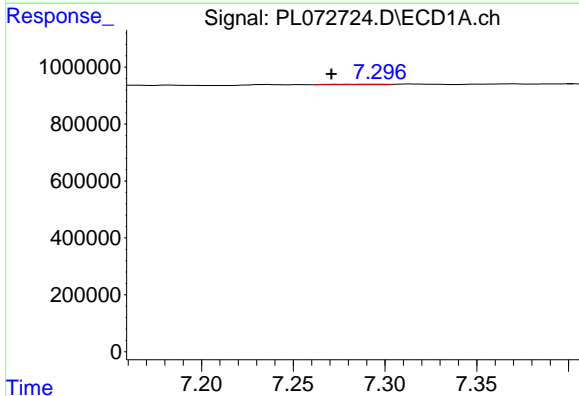
R.T.: 6.554 min
 Delta R.T.: -0.017 min
 Response: 30084
 Conc: 1.19 ng/ml

Instrument :
 ECD_L
 ClientSampleId :



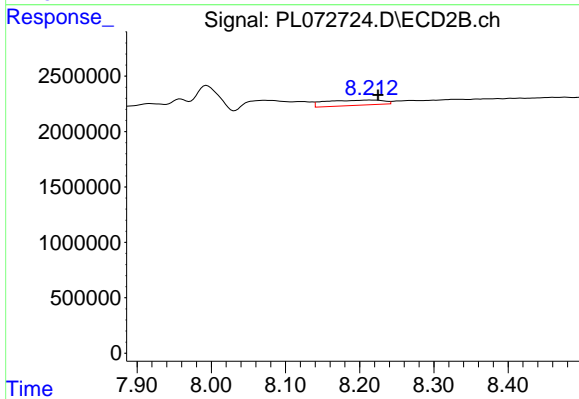
#24 Chlordane-2

R.T.: 0.000 min
 Exp R.T. : 7.467 min
 Response: 0
 Conc: N.D.



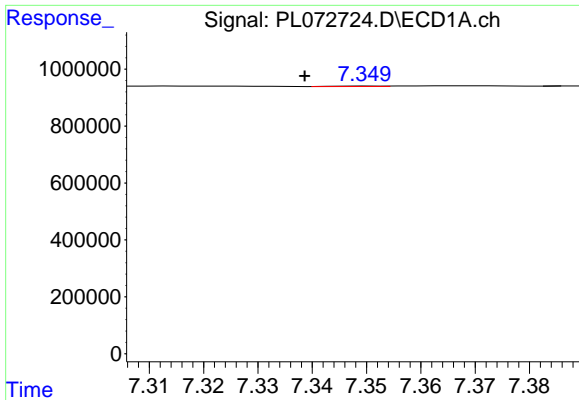
#25 Chlordane-3

R.T.: 7.297 min
 Delta R.T.: 0.026 min
 Response: 28418
 Conc: 0.42 ng/ml



#25 Chlordane-3

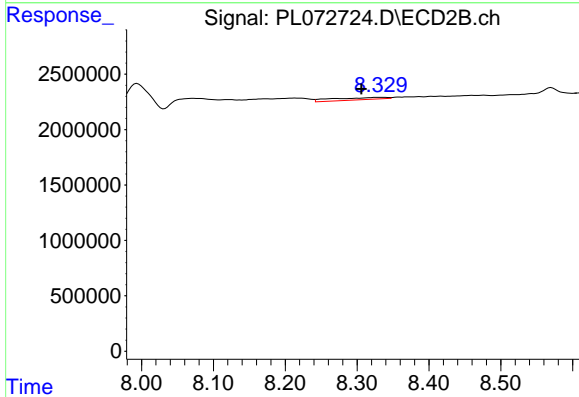
R.T.: 8.215 min
 Delta R.T.: -0.010 min
 Response: 2593105
 Conc: 8.68 ng/ml



#26 Chlordane-4

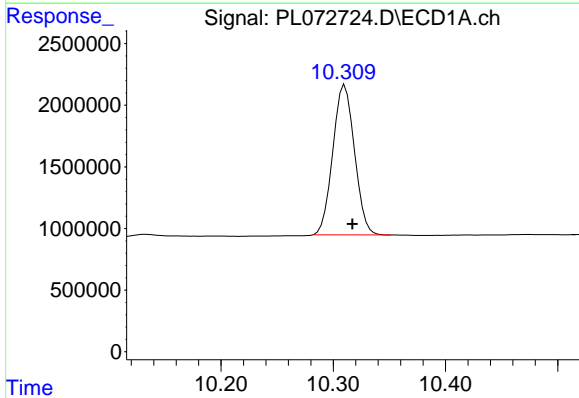
R.T.: 7.350 min
 Delta R.T.: 0.012 min
 Response: 9399
 Conc: 0.13 ng/ml

Instrument :
 ECD_L
 ClientSampleId :



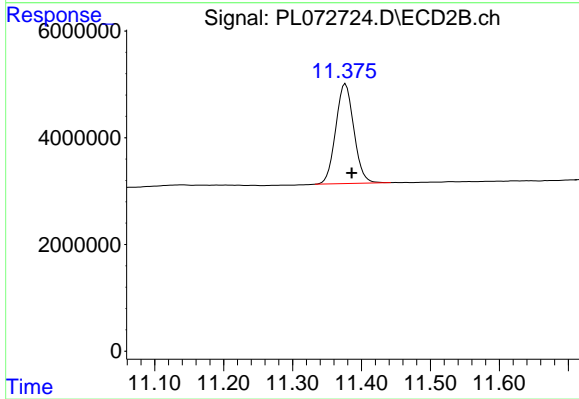
#26 Chlordane-4

R.T.: 8.331 min
 Delta R.T.: 0.026 min
 Response: 1055057
 Conc: 2.96 ng/ml



#28 Decachlorobiphenyl

R.T.: 10.310 min
 Delta R.T.: -0.007 min
 Response: 16347250
 Conc: 21.59 ng/ml



#28 Decachlorobiphenyl

R.T.: 11.377 min
 Delta R.T.: -0.009 min
 Response: 34190837
 Conc: 21.56 ng/ml