

Data Path : Z:\pestpcbsrv\HPCHEM1\ECD\_L\Data\PL021522\  
 Data File : PL072726.D  
 Signal(s) : Signal #1: ECD1A.ch Signal #2: ECD2B.ch  
 Acq On : 15 Feb 2022 21:09  
 Operator : AR\AJ  
 Sample : PSTDCCC050  
 Misc :  
 ALS Vial : 4 Sample Multiplier: 1

Instrument :  
 ECD\_L  
 ClientSampleId :

Integration File signal 1: autoint1.e  
 Integration File signal 2: autoint2.e  
 Quant Time: Feb 16 01:59:37 2022  
 Quant Method : Z:\pestpcbsrv\HPCHEM1\ECD\_L\methods\PL020722.M  
 Quant Title : GC Extractables  
 QLast Update : Tue Feb 08 05:14:10 2022  
 Response via : Initial Calibration  
 Integrator: ChemStation

Volume Inj. : 1 µl  
 Signal #1 Phase : ZB-MR2 Signal #2 Phase: ZB-MR1  
 Signal #1 Info : 30M x 0.32mm x0.2 Signal #2 Info : 30M x 0.32mm x0.5µm

Compound	RT#1	RT#2	Resp#1	Resp#2	ng/ml	ng/ml
System Monitoring Compounds						
1) SA Tetrachlo...	4.554	5.489	24585707	86250132	51.060	49.931
28) SA Decachlor...	10.311	11.377	40199519	88877934	53.100	56.047
Target Compounds						
2) A alpha-BHC	5.260	6.070	34893272	126.3E6	52.921	52.758
3) MA gamma-BHC...	5.683	6.466	33929045	118.1E6	53.986	51.305
4) MA Heptachlor	6.088	7.112	38609923	121.7E6	52.895	53.431
5) MB Aldrin	6.412	7.481	35397583	114.4E6	54.824	53.504
6) B beta-BHC	6.069	6.726	11650338	52650871	47.017	51.648
7) B delta-BHC	6.326	6.992	36016066	119.7E6	54.395	52.232
8) B Heptachlo...	6.989	7.949	34689641	104.6E6	55.024	54.230
9) A Endosulfan I	7.390	8.354	32625701	96282487	55.766	55.035
10) B gamma-Chl...	7.266	8.219	34460468	105.9E6	54.400	54.761
11) B alpha-Chl...	7.335	8.299	35349515	104.3E6	55.513	54.882
12) B 4,4'-DDE	7.550	8.489	34386822	102.0E6	56.584	54.560
13) MA Dieldrin	7.677	8.643	35409191	103.4E6	56.072	55.470
14) MA Endrin	7.968	8.881	31963086	87188051	54.562	55.335
15) B Endosulfa...	8.280	9.118	33587162	90161326	55.206	53.625
16) A 4,4'-DDD	8.136	9.030	27038643	75736454	56.202	54.731
17) MA 4,4'-DDT	8.396	9.346	31403053	85457920	58.361	55.824
18) B Endrin al...	8.469	9.253	24499220	63760457	56.206	56.652
19) B Endosulfa...	8.700	9.490	33577931	84546155	56.424	56.516
20) A Methoxychlor	8.992	9.834	19891362	45096567	56.570	55.699
21) B Endrin ke...	9.217	9.987	39394961	88862880	57.321	55.773
22) Mirex	9.398	10.449	33875541	67335172	57.102	57.360
24) Chlordane-2	6.577	7.481	21306	114.4E6	0.843	1485.230 #
25) Chlordane-3	7.266	8.219	34460468	105.9E6	511.276	354.448 #
26) Chlordane-4	7.335	8.299	35349515	104.3E6	481.759	292.250 #
27) Chlordane-5	8.280	0.000	33587162	0	1309.163	N.D. #

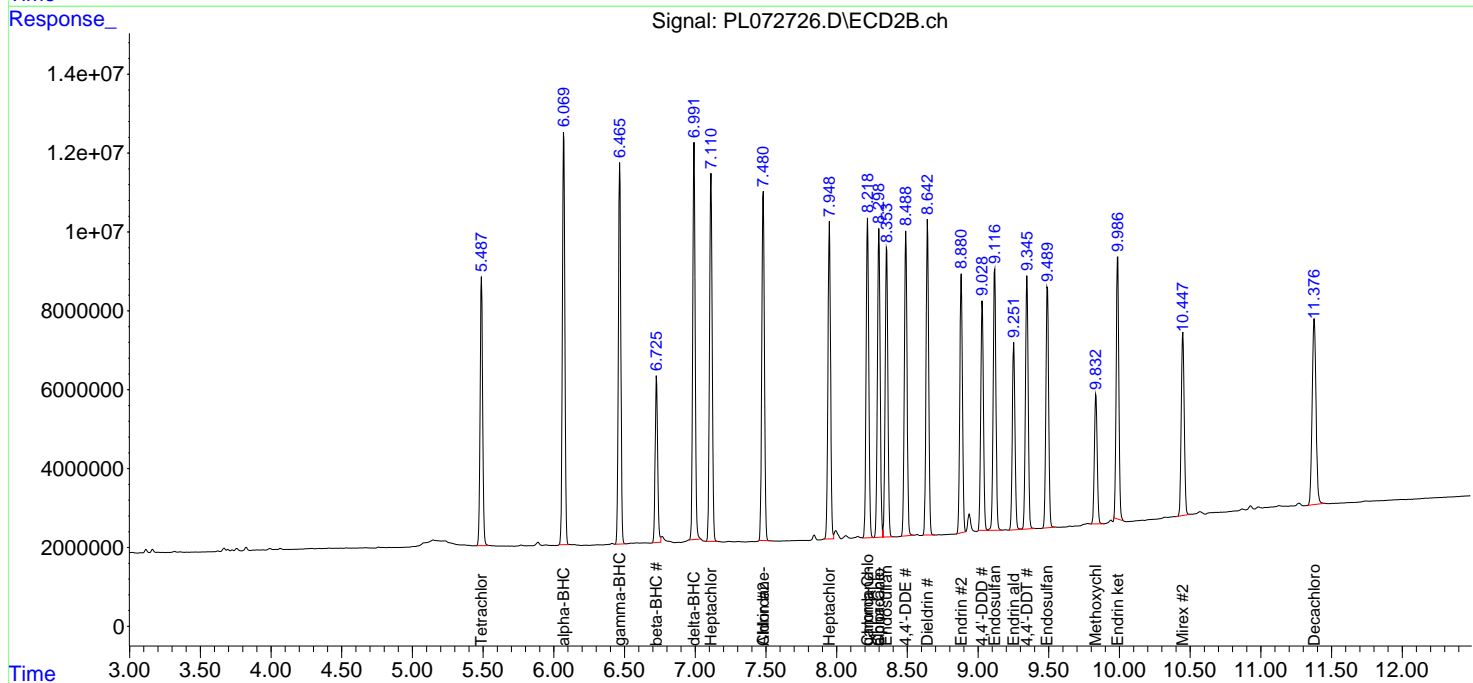
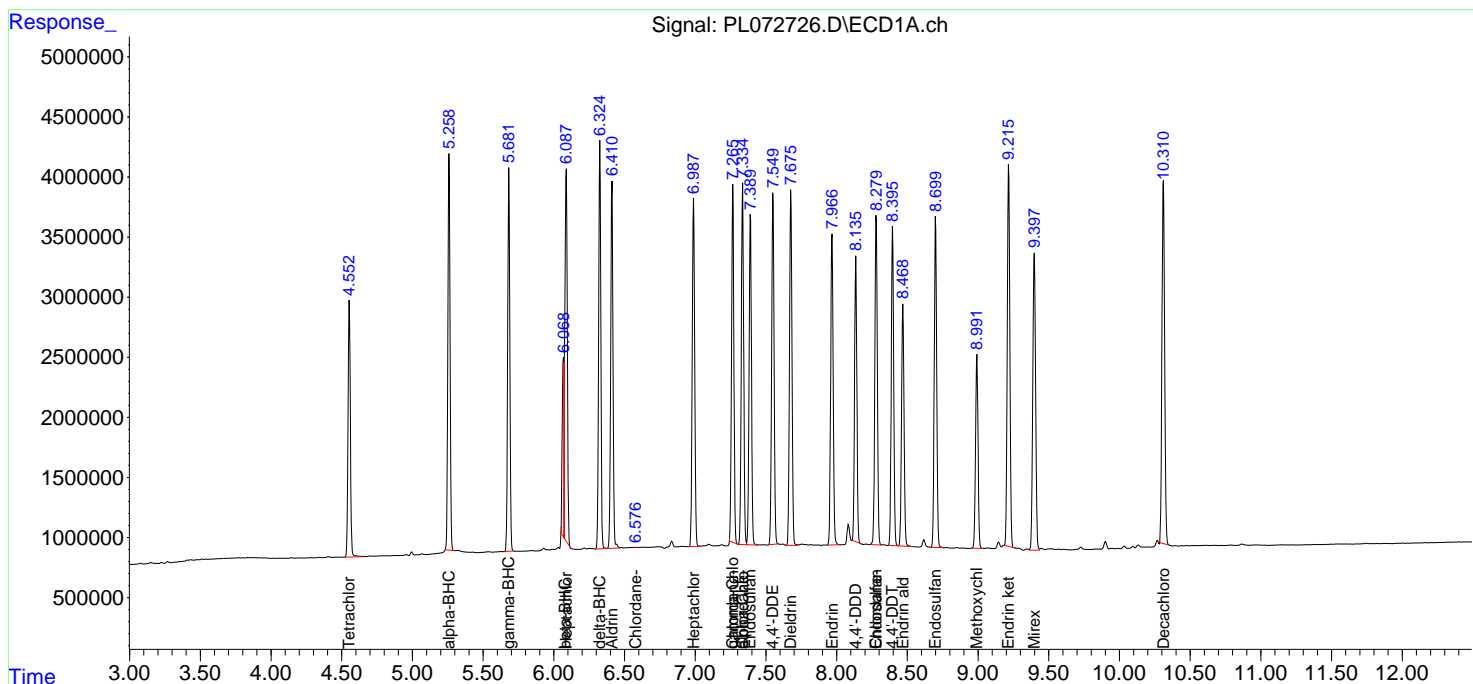
(f)=RT Delta > 1/2 Window (#)=Amounts differ by > 25% (m)=manual int.

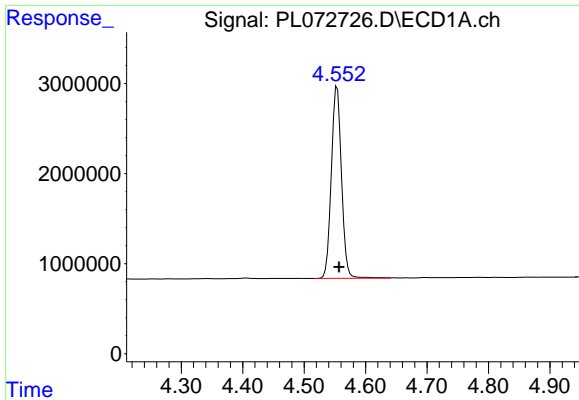
Data Path : Z:\pestpcbsrv\HPCHEM1\ECD\_L\Data\PL021522\  
 Data File : PL072726.D  
 Signal(s) : Signal #1: ECD1A.ch Signal #2: ECD2B.ch  
 Acq On : 15 Feb 2022 21:09  
 Operator : AR\AJ  
 Sample : PSTDCCC050  
 Misc :  
 ALS Vial : 4 Sample Multiplier: 1

Instrument :  
 ECD\_L  
 ClientSampleId :

Integration File signal 1: autoint1.e  
 Integration File signal 2: autoint2.e  
 Quant Time: Feb 16 01:59:37 2022  
 Quant Method : Z:\pestpcbsrv\HPCHEM1\ECD\_L\methods\PL020722.M  
 Quant Title : GC Extractables  
 QLast Update : Tue Feb 08 05:14:10 2022  
 Response via : Initial Calibration  
 Integrator: ChemStation

Volume Inj. : 1 µl  
 Signal #1 Phase : ZB-MR2 Signal #2 Phase: ZB-MR1  
 Signal #1 Info : 30M x 0.32mm x0.2 Signal #2 Info : 30M x 0.32mm x0.5µm

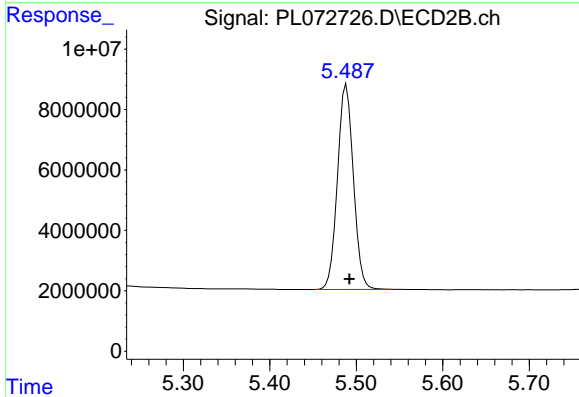




#1 Tetrachloro-m-xylene

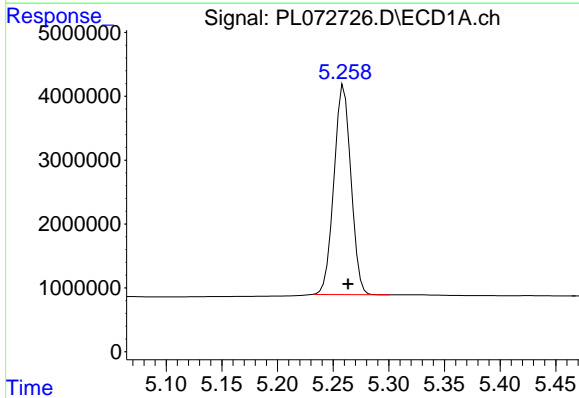
R.T.: 4.554 min  
 Delta R.T.: -0.003 min  
 Response: 24585707  
 Conc: 51.06 ng/ml

Instrument :  
 ECD\_L  
 ClientSampleId :



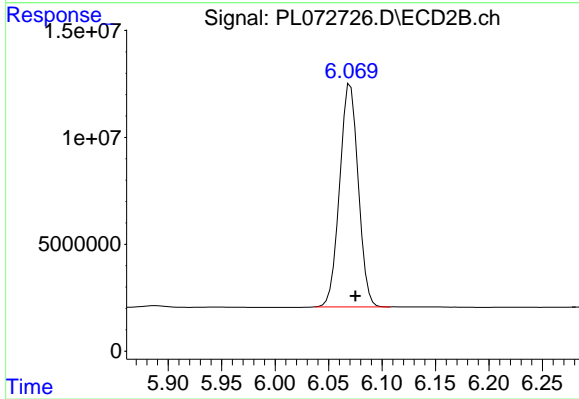
#1 Tetrachloro-m-xylene

R.T.: 5.489 min  
 Delta R.T.: -0.003 min  
 Response: 86250132  
 Conc: 49.93 ng/ml



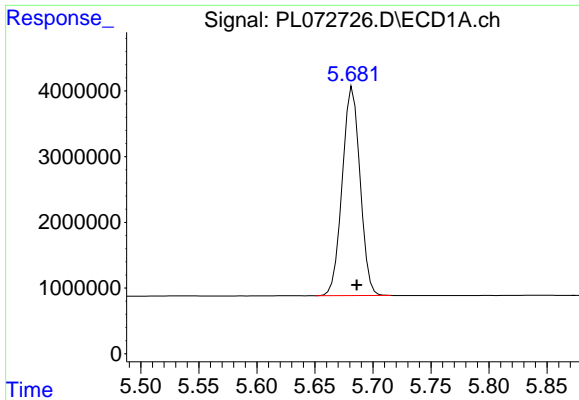
#2 alpha-BHC

R.T.: 5.260 min  
 Delta R.T.: -0.004 min  
 Response: 34893272  
 Conc: 52.92 ng/ml



#2 alpha-BHC

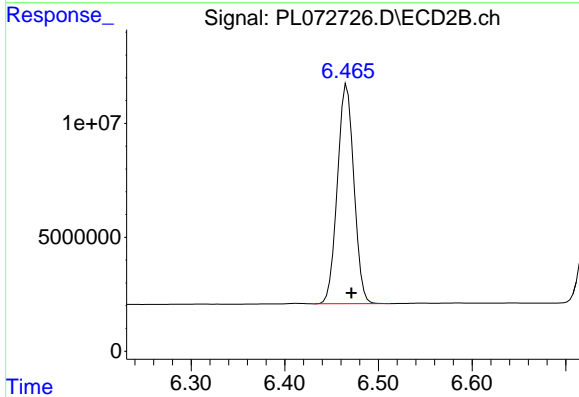
R.T.: 6.070 min  
 Delta R.T.: -0.005 min  
 Response: 126340411  
 Conc: 52.76 ng/ml



#3 gamma-BHC (Lindane)

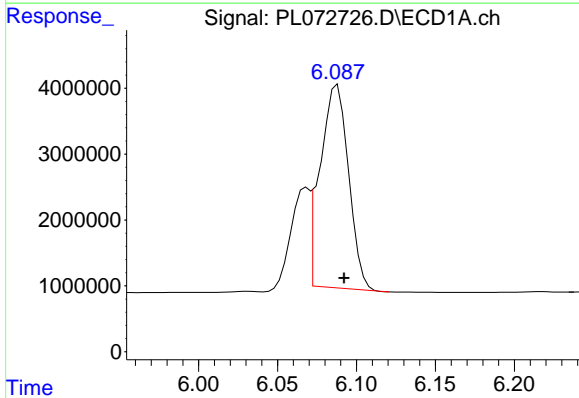
R.T.: 5.683 min  
 Delta R.T.: -0.004 min  
 Response: 33929045  
 Conc: 53.99 ng/ml

Instrument :  
 ECD\_L  
 ClientSampleId :



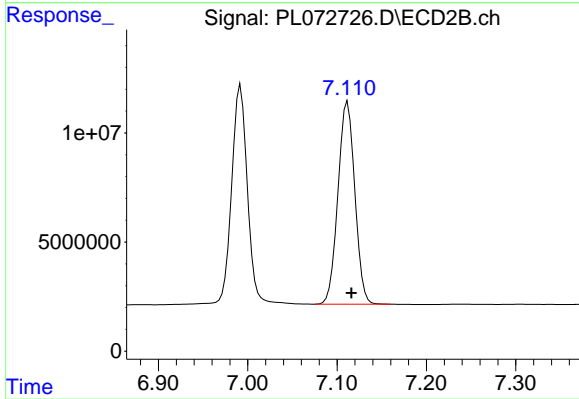
#3 gamma-BHC (Lindane)

R.T.: 6.466 min  
 Delta R.T.: -0.005 min  
 Response: 118127078  
 Conc: 51.30 ng/ml



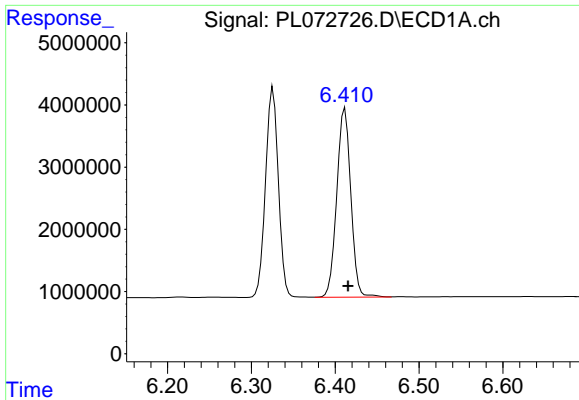
#4 Heptachlor

R.T.: 6.088 min  
 Delta R.T.: -0.004 min  
 Response: 38609923  
 Conc: 52.90 ng/ml



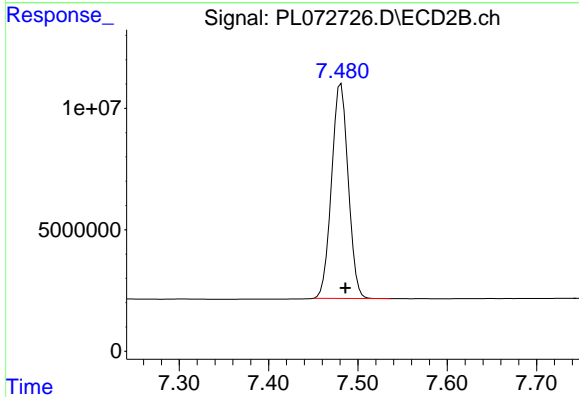
#4 Heptachlor

R.T.: 7.112 min  
 Delta R.T.: -0.004 min  
 Response: 121654250  
 Conc: 53.43 ng/ml

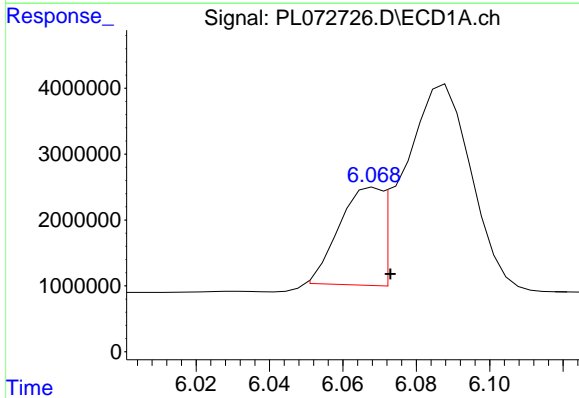


#5 Aldrin  
 R.T.: 6.412 min  
 Delta R.T.: -0.004 min  
 Response: 35397583  
 Conc: 54.82 ng/ml

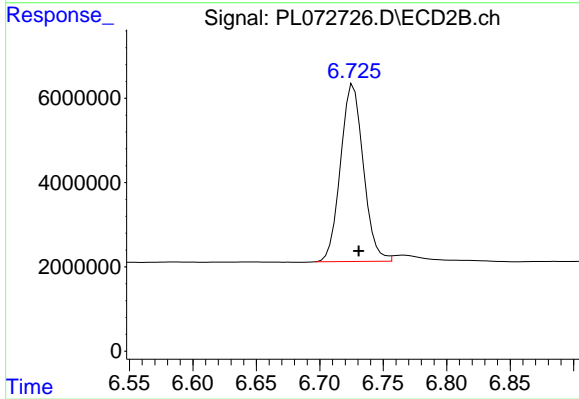
Instrument :  
 ECD\_L  
 ClientSampleId :



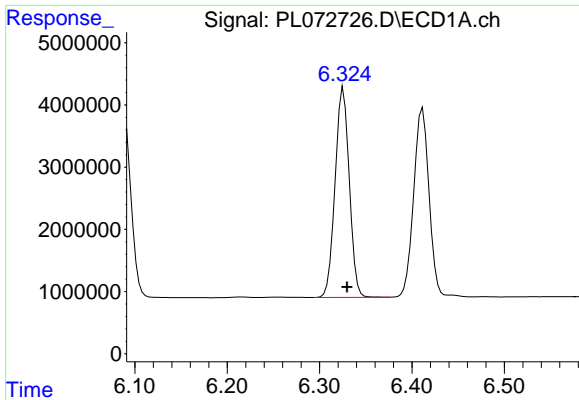
#5 Aldrin  
 R.T.: 7.481 min  
 Delta R.T.: -0.005 min  
 Response: 114379104  
 Conc: 53.50 ng/ml



#6 beta-BHC  
 R.T.: 6.069 min  
 Delta R.T.: -0.004 min  
 Response: 11650338  
 Conc: 47.02 ng/ml



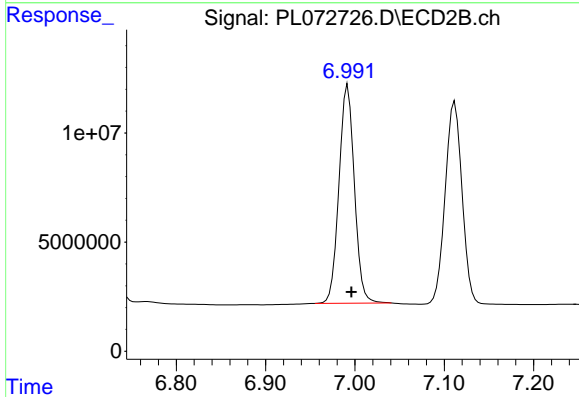
#6 beta-BHC  
 R.T.: 6.726 min  
 Delta R.T.: -0.004 min  
 Response: 52650871  
 Conc: 51.65 ng/ml



#7 delta-BHC

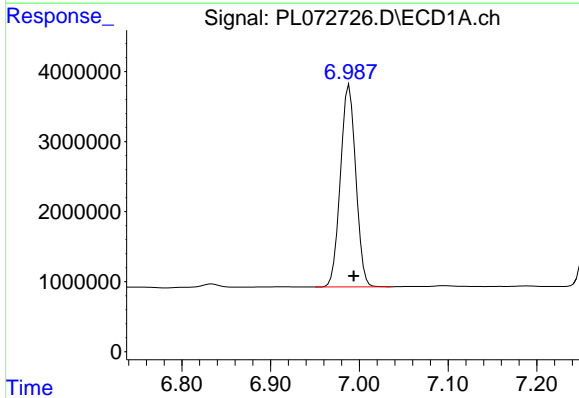
R.T.: 6.326 min  
 Delta R.T.: -0.004 min  
 Response: 36016066  
 Conc: 54.39 ng/ml

Instrument :  
 ECD\_L  
 ClientSampleId :



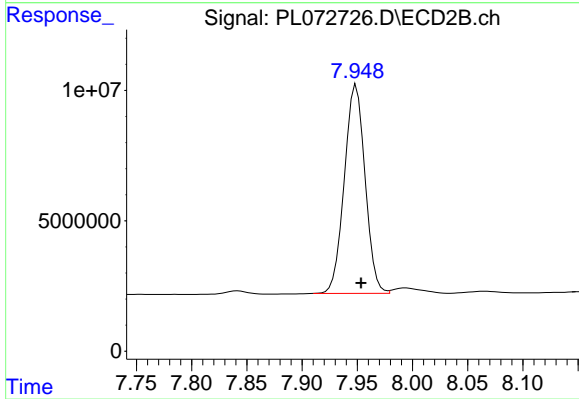
#7 delta-BHC

R.T.: 6.992 min  
 Delta R.T.: -0.004 min  
 Response: 119665148  
 Conc: 52.23 ng/ml



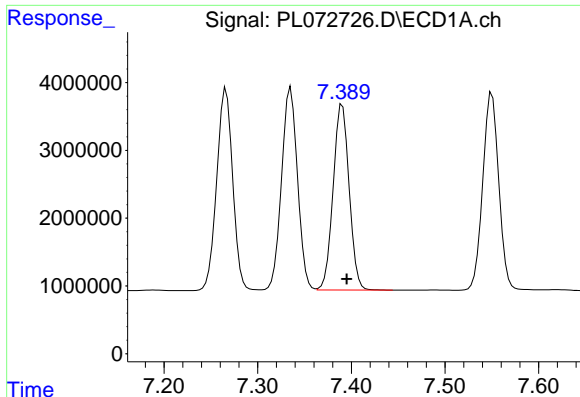
#8 Heptachlor epoxide

R.T.: 6.989 min  
 Delta R.T.: -0.005 min  
 Response: 34689641  
 Conc: 55.02 ng/ml



#8 Heptachlor epoxide

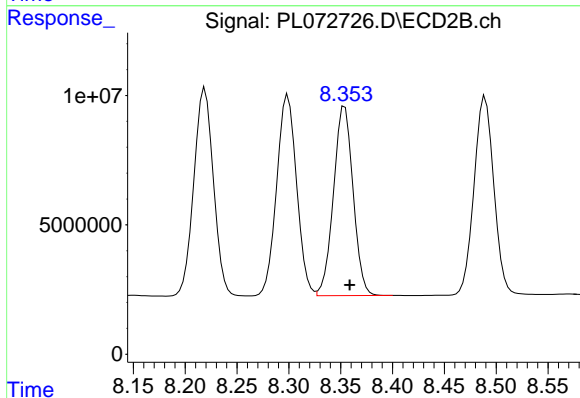
R.T.: 7.949 min  
 Delta R.T.: -0.004 min  
 Response: 104625202  
 Conc: 54.23 ng/ml



#9 Endosulfan I

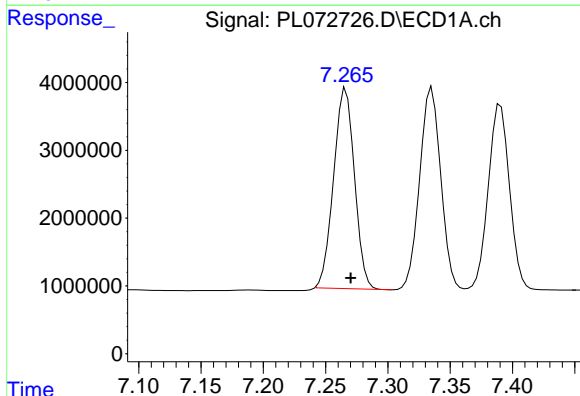
R.T.: 7.390 min  
 Delta R.T.: -0.005 min  
 Response: 32625701  
 Conc: 55.77 ng/ml

Instrument :  
 ECD\_L  
 ClientSampleId :



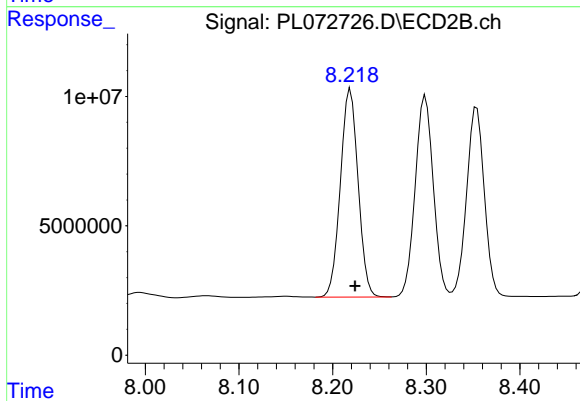
#9 Endosulfan I

R.T.: 8.354 min  
 Delta R.T.: -0.005 min  
 Response: 96282487  
 Conc: 55.03 ng/ml



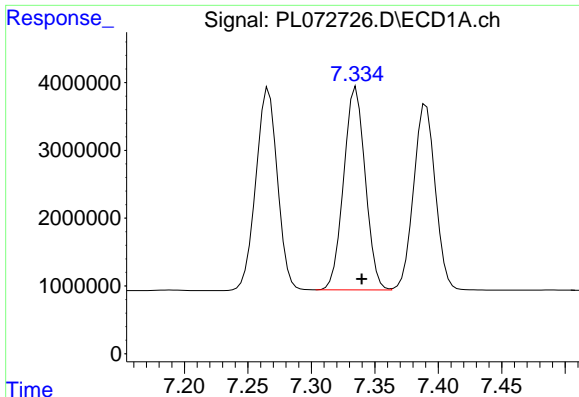
#10 gamma-Chlordane

R.T.: 7.266 min  
 Delta R.T.: -0.004 min  
 Response: 34460468  
 Conc: 54.40 ng/ml



#10 gamma-Chlordane

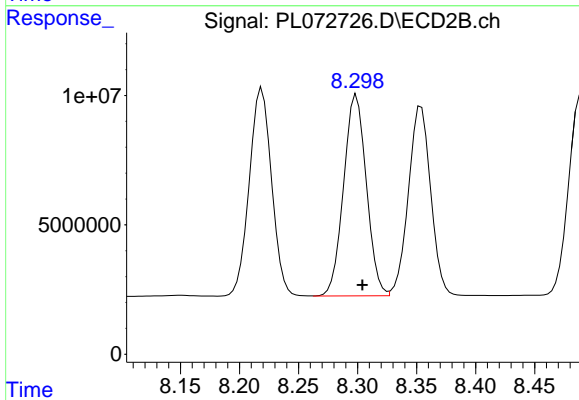
R.T.: 8.219 min  
 Delta R.T.: -0.005 min  
 Response: 105922642  
 Conc: 54.76 ng/ml



#11 alpha-Chlordane

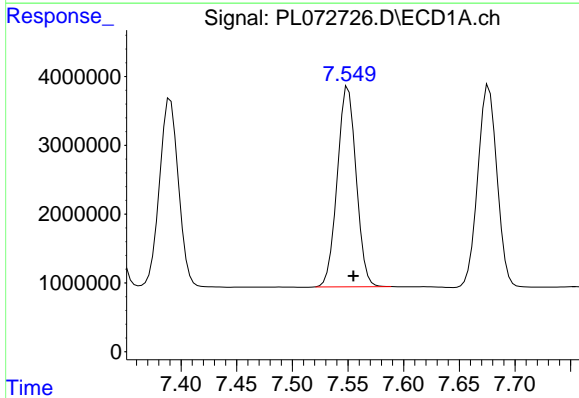
R.T.: 7.335 min  
 Delta R.T.: -0.004 min  
 Response: 35349515  
 Conc: 55.51 ng/ml

Instrument :  
 ECD\_L  
 ClientSampleId :



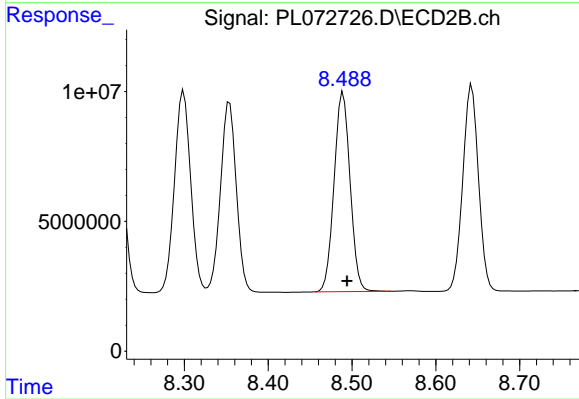
#11 alpha-Chlordane

R.T.: 8.299 min  
 Delta R.T.: -0.005 min  
 Response: 104273543  
 Conc: 54.88 ng/ml



#12 4,4'-DDE

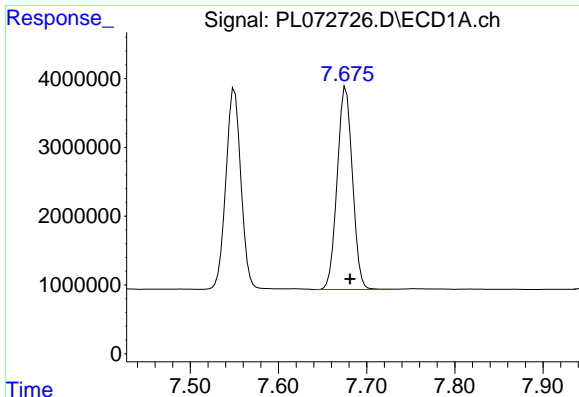
R.T.: 7.550 min  
 Delta R.T.: -0.005 min  
 Response: 34386822  
 Conc: 56.58 ng/ml



#12 4,4'-DDE

R.T.: 8.489 min  
 Delta R.T.: -0.005 min  
 Response: 101977446  
 Conc: 54.56 ng/ml

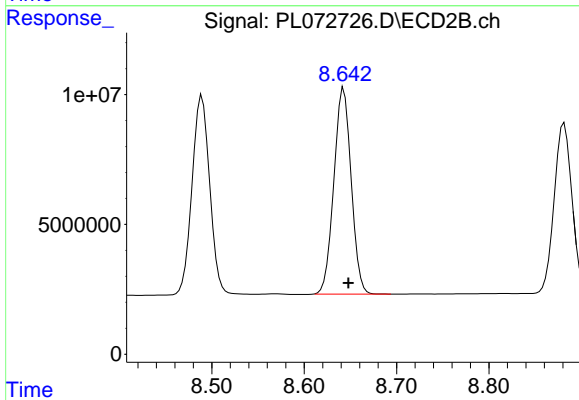




#13 Dieldrin

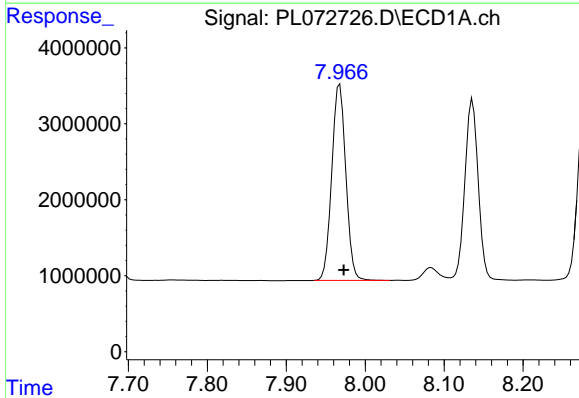
R.T.: 7.677 min  
 Delta R.T.: -0.005 min  
 Response: 35409191  
 Conc: 56.07 ng/ml

Instrument :  
 ECD\_L  
 ClientSampleId :



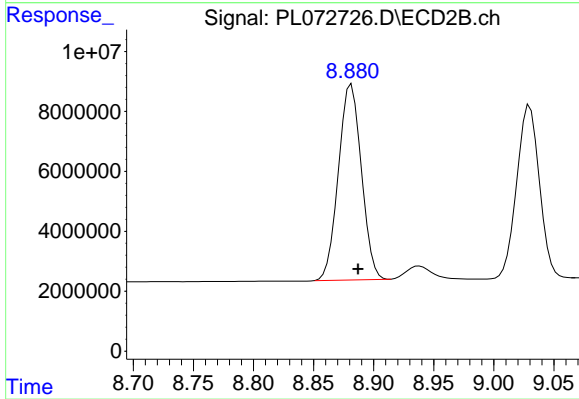
#13 Dieldrin

R.T.: 8.643 min  
 Delta R.T.: -0.005 min  
 Response: 103376401  
 Conc: 55.47 ng/ml



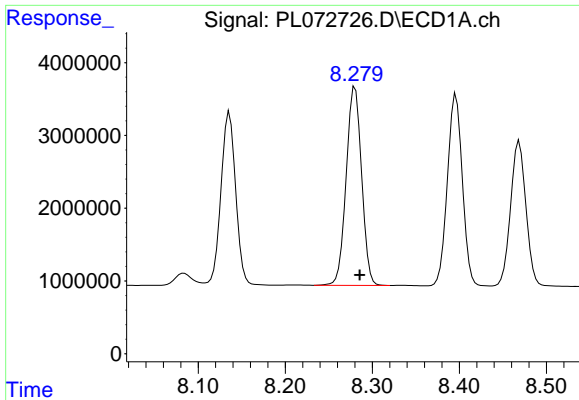
#14 Endrin

R.T.: 7.968 min  
 Delta R.T.: -0.005 min  
 Response: 31963086  
 Conc: 54.56 ng/ml



#14 Endrin

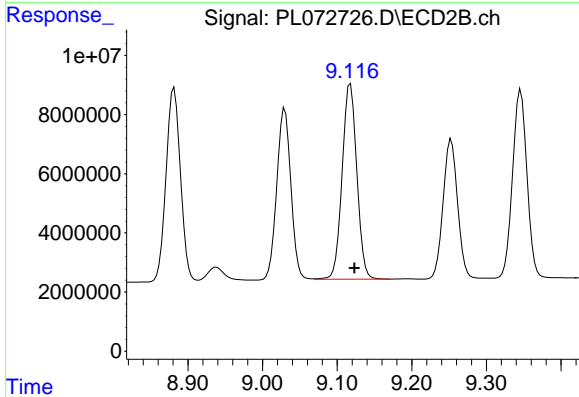
R.T.: 8.881 min  
 Delta R.T.: -0.006 min  
 Response: 87188051  
 Conc: 55.33 ng/ml



#15 Endosulfan II

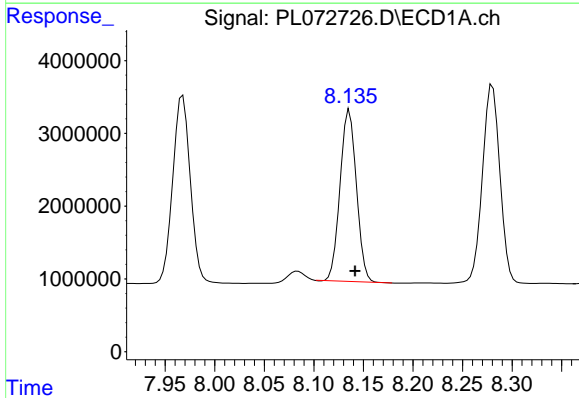
R.T.: 8.280 min  
 Delta R.T.: -0.005 min  
 Response: 33587162  
 Conc: 55.21 ng/ml

Instrument :  
 ECD\_L  
 ClientSampleId :



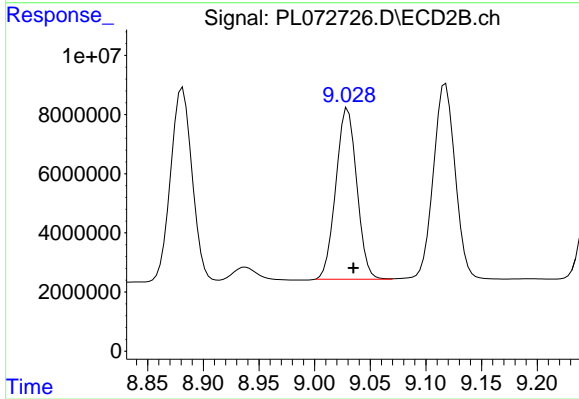
#15 Endosulfan II

R.T.: 9.118 min  
 Delta R.T.: -0.005 min  
 Response: 90161326  
 Conc: 53.63 ng/ml



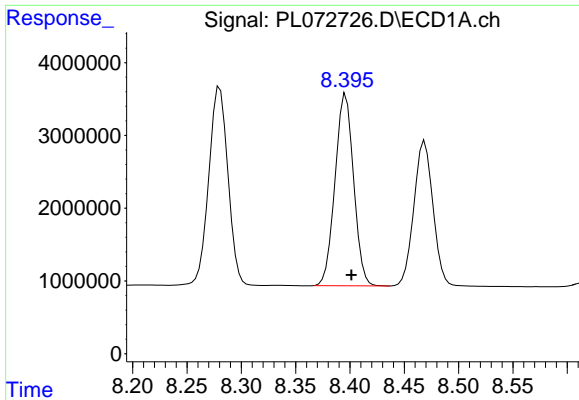
#16 4,4'-DDD

R.T.: 8.136 min  
 Delta R.T.: -0.006 min  
 Response: 27038643  
 Conc: 56.20 ng/ml



#16 4,4'-DDD

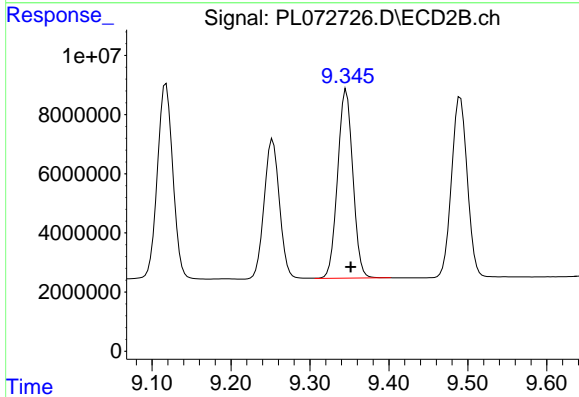
R.T.: 9.030 min  
 Delta R.T.: -0.005 min  
 Response: 75736454  
 Conc: 54.73 ng/ml



#17 4,4'-DDT

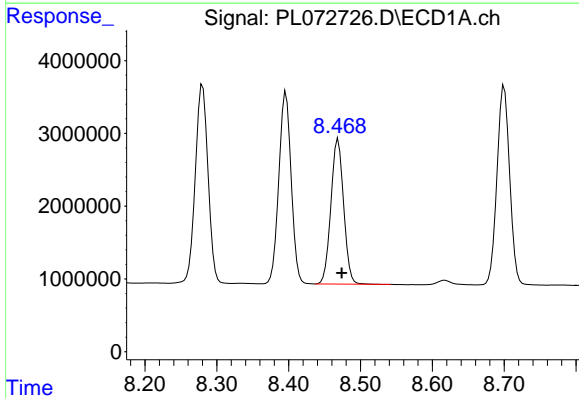
R.T.: 8.396 min  
 Delta R.T.: -0.005 min  
 Response: 31403053  
 Conc: 58.36 ng/ml

Instrument :  
 ECD\_L  
 ClientSampleId :



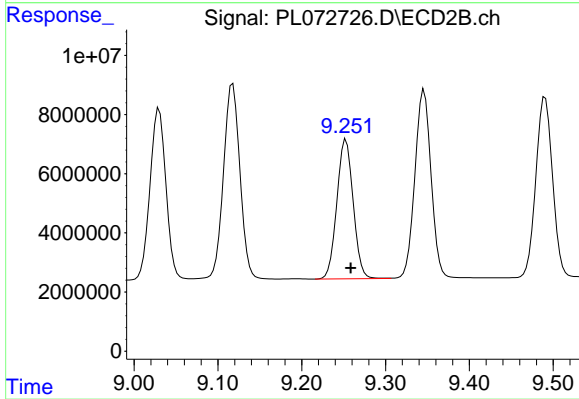
#17 4,4'-DDT

R.T.: 9.346 min  
 Delta R.T.: -0.005 min  
 Response: 85457920  
 Conc: 55.82 ng/ml



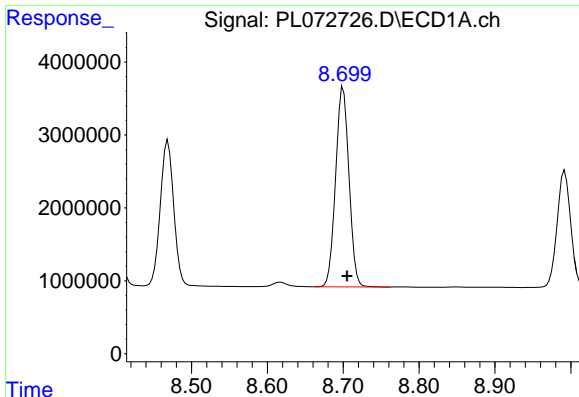
#18 Endrin aldehyde

R.T.: 8.469 min  
 Delta R.T.: -0.005 min  
 Response: 24499220  
 Conc: 56.21 ng/ml



#18 Endrin aldehyde

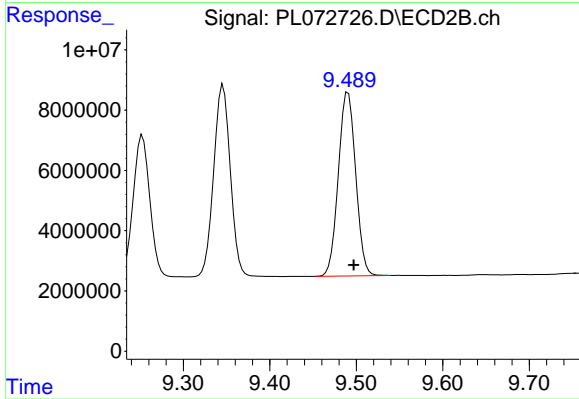
R.T.: 9.253 min  
 Delta R.T.: -0.006 min  
 Response: 63760457  
 Conc: 56.65 ng/ml



#19 Endosulfan Sulfate

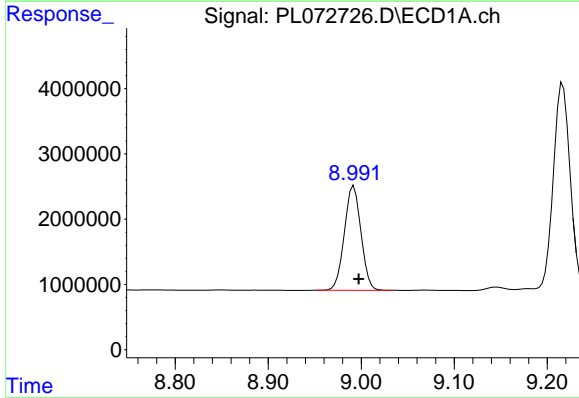
R.T.: 8.700 min  
 Delta R.T.: -0.005 min  
 Response: 33577931  
 Conc: 56.42 ng/ml

Instrument :  
 ECD\_L  
 ClientSampleId :



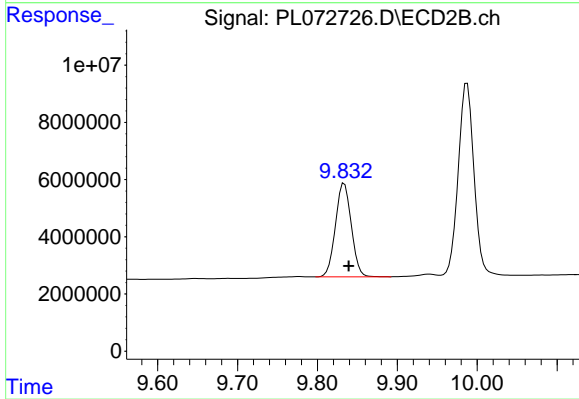
#19 Endosulfan Sulfate

R.T.: 9.490 min  
 Delta R.T.: -0.007 min  
 Response: 84546155  
 Conc: 56.52 ng/ml



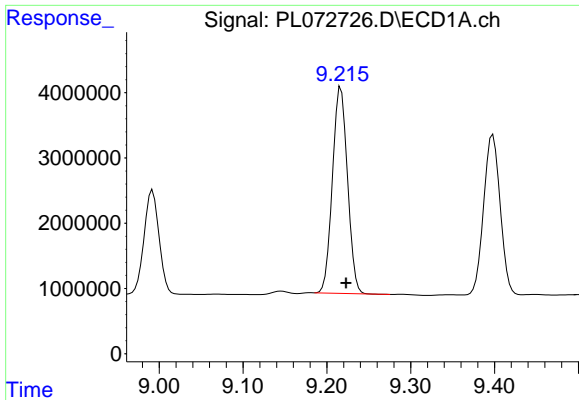
#20 Methoxychlor

R.T.: 8.992 min  
 Delta R.T.: -0.005 min  
 Response: 19891362  
 Conc: 56.57 ng/ml



#20 Methoxychlor

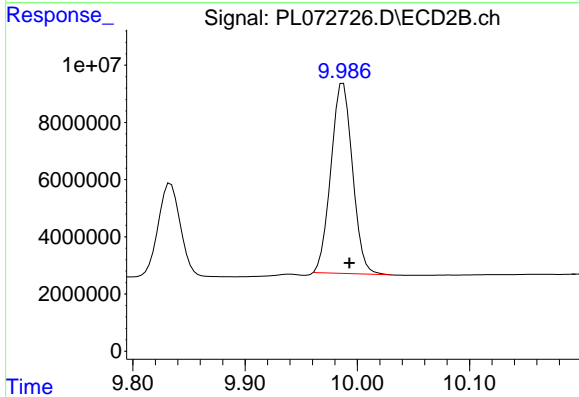
R.T.: 9.834 min  
 Delta R.T.: -0.006 min  
 Response: 45096567  
 Conc: 55.70 ng/ml



#21 Endrin ketone

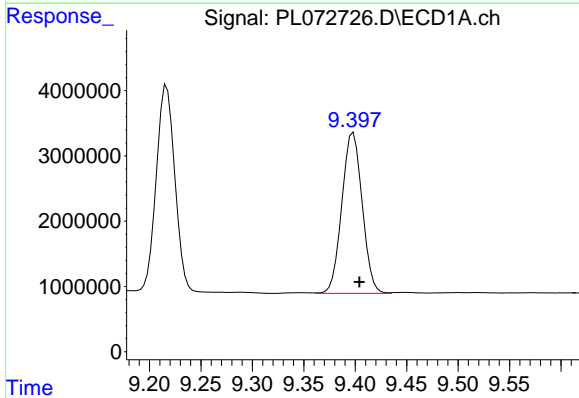
R.T.: 9.217 min  
 Delta R.T.: -0.006 min  
 Response: 39394961  
 Conc: 57.32 ng/ml

Instrument :  
 ECD\_L  
 ClientSampleId :



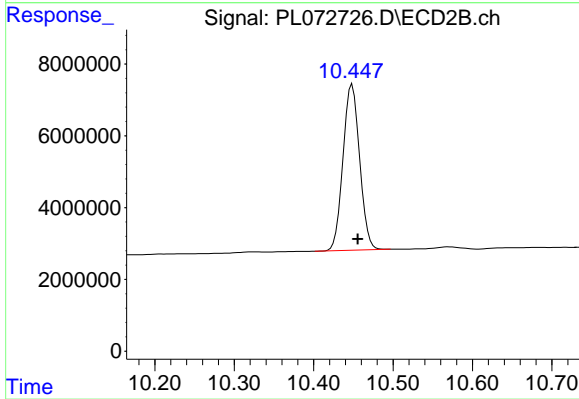
#21 Endrin ketone

R.T.: 9.987 min  
 Delta R.T.: -0.005 min  
 Response: 88862880  
 Conc: 55.77 ng/ml



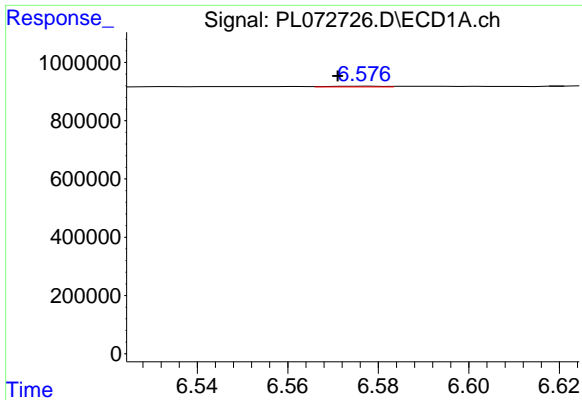
#22 Mirex

R.T.: 9.398 min  
 Delta R.T.: -0.006 min  
 Response: 33875541  
 Conc: 57.10 ng/ml



#22 Mirex

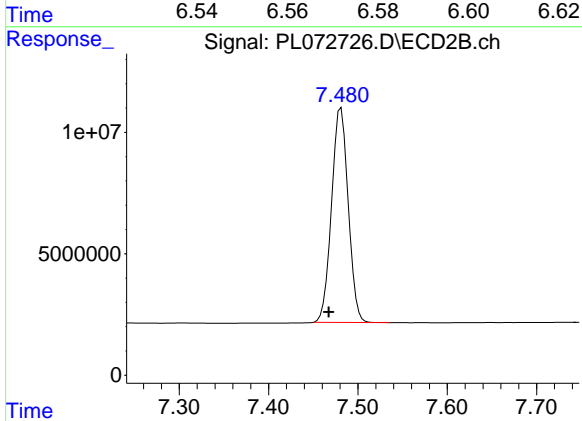
R.T.: 10.449 min  
 Delta R.T.: -0.007 min  
 Response: 67335172  
 Conc: 57.36 ng/ml



#24 Chlordane-2

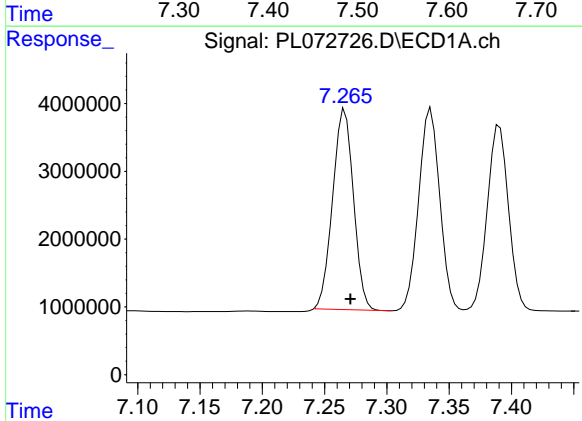
R.T.: 6.577 min  
 Delta R.T.: 0.006 min  
 Response: 21306  
 Conc: 0.84 ng/ml

Instrument :  
 ECD\_L  
 ClientSampleId :



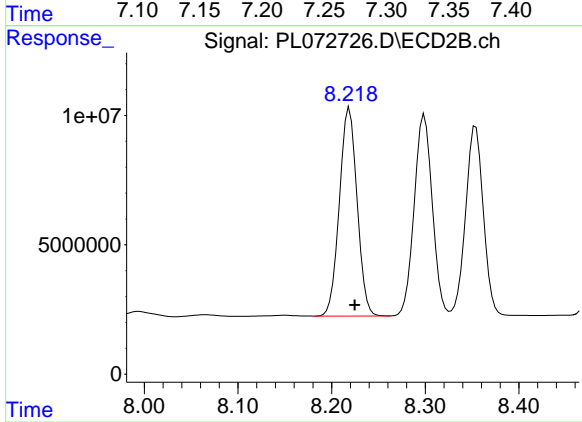
#24 Chlordane-2

R.T.: 7.481 min  
 Delta R.T.: 0.014 min  
 Response: 114379104  
 Conc: 1485.23 ng/ml



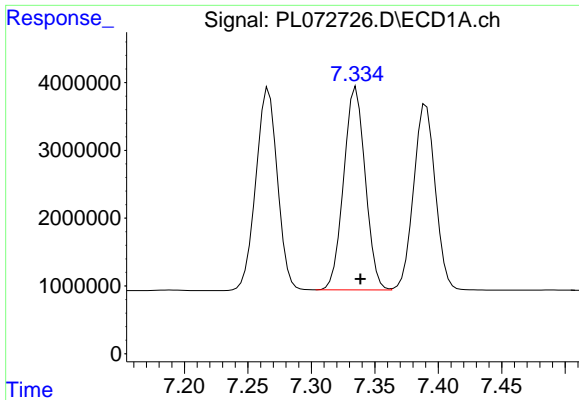
#25 Chlordane-3

R.T.: 7.266 min  
 Delta R.T.: -0.005 min  
 Response: 34460468  
 Conc: 511.28 ng/ml



#25 Chlordane-3

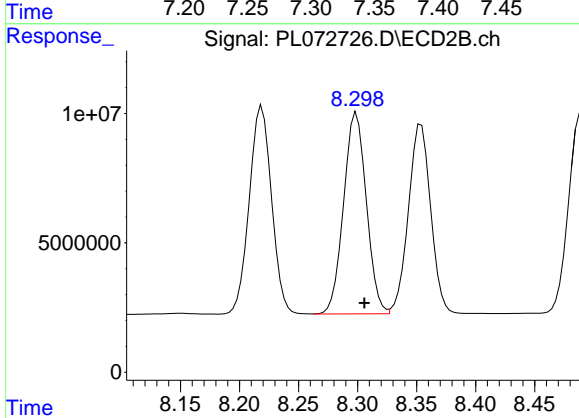
R.T.: 8.219 min  
 Delta R.T.: -0.006 min  
 Response: 105922642  
 Conc: 354.45 ng/ml



#26 Chlordane-4

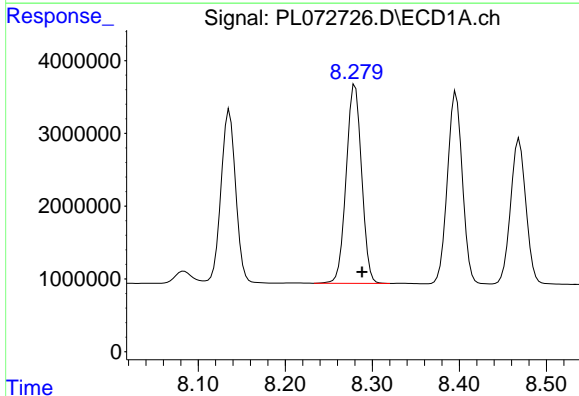
R.T.: 7.335 min  
 Delta R.T.: -0.003 min  
 Response: 35349515  
 Conc: 481.76 ng/ml

Instrument :  
 ECD\_L  
 ClientSampleId :



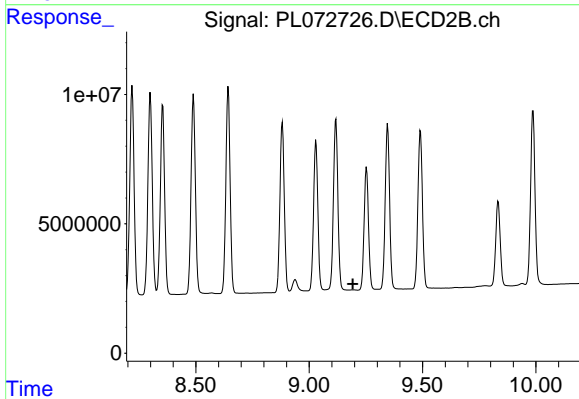
#26 Chlordane-4

R.T.: 8.299 min  
 Delta R.T.: -0.007 min  
 Response: 104273543  
 Conc: 292.25 ng/ml



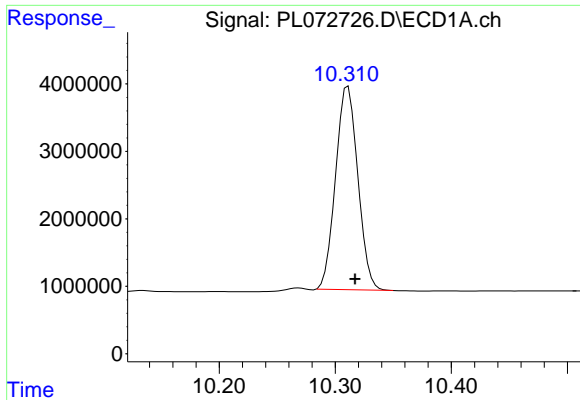
#27 Chlordane-5

R.T.: 8.280 min  
 Delta R.T.: -0.008 min  
 Response: 33587162  
 Conc: 1309.16 ng/ml



#27 Chlordane-5

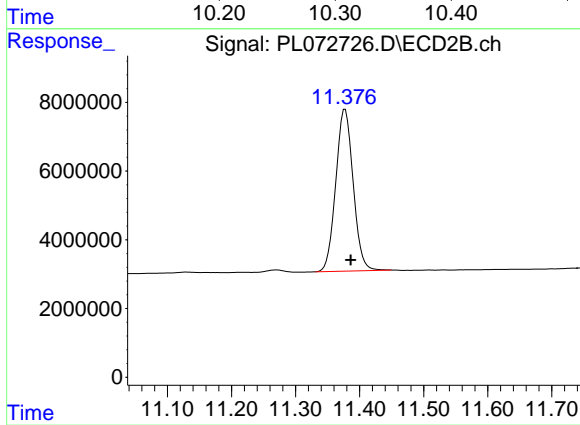
R.T.: 0.000 min  
 Exp R.T. : 9.193 min  
 Response: 0  
 Conc: N.D.



#28 Decachlorobiphenyl

R.T.: 10.311 min  
Delta R.T.: -0.006 min  
Response: 40199519  
Conc: 53.10 ng/ml

Instrument :  
ECD\_L  
ClientSampleId :



#28 Decachlorobiphenyl

R.T.: 11.377 min  
Delta R.T.: -0.009 min  
Response: 88877934  
Conc: 56.05 ng/ml