

Data Path : Z:\pestpcbsrv\HPCHEM1\ECD\_L\Data\PL021720\  
 Data File : PL056602.D  
 Signal(s) : Signal #1: ECD1A.ch Signal #2: ECD2B.ch  
 Acq On : 17 Feb 2020 18:00  
 Operator : AJ\MA  
 Sample : L1546-13  
 Misc :  
 ALS Vial : 24 Sample Multiplier: 1

Instrument :  
 ECD\_L  
 ClientSampleId :

Integration File signal 1: autoint1.e  
 Integration File signal 2: autoint2.e  
 Quant Time: Feb 18 01:03:40 2020  
 Quant Method : Z:\pestpcbsrv\HPCHEM1\ECD\_L\methods\PL021220.M  
 Quant Title : GC Extractables  
 QLast Update : Thu Feb 13 05:32:36 2020  
 Response via : Initial Calibration  
 Integrator: ChemStation

Volume Inj. : 1 µl  
 Signal #1 Phase : ZB-MR2 Signal #2 Phase: ZB-MR1  
 Signal #1 Info : 30M x 0.32mm x0.2 Signal #2 Info : 30M x 0.32mm x0.5µm

Compound	RT#1	RT#2	Resp#1	Resp#2	ng/ml	ng/ml
-----						
System Monitoring Compounds						
1) SA Tetrachlo...	3.496	4.019	108.3E6	34335246	12.277	12.621
28) SA Decachlor...	8.248	9.091	87459630	19451078	9.130	9.536

Target Compounds

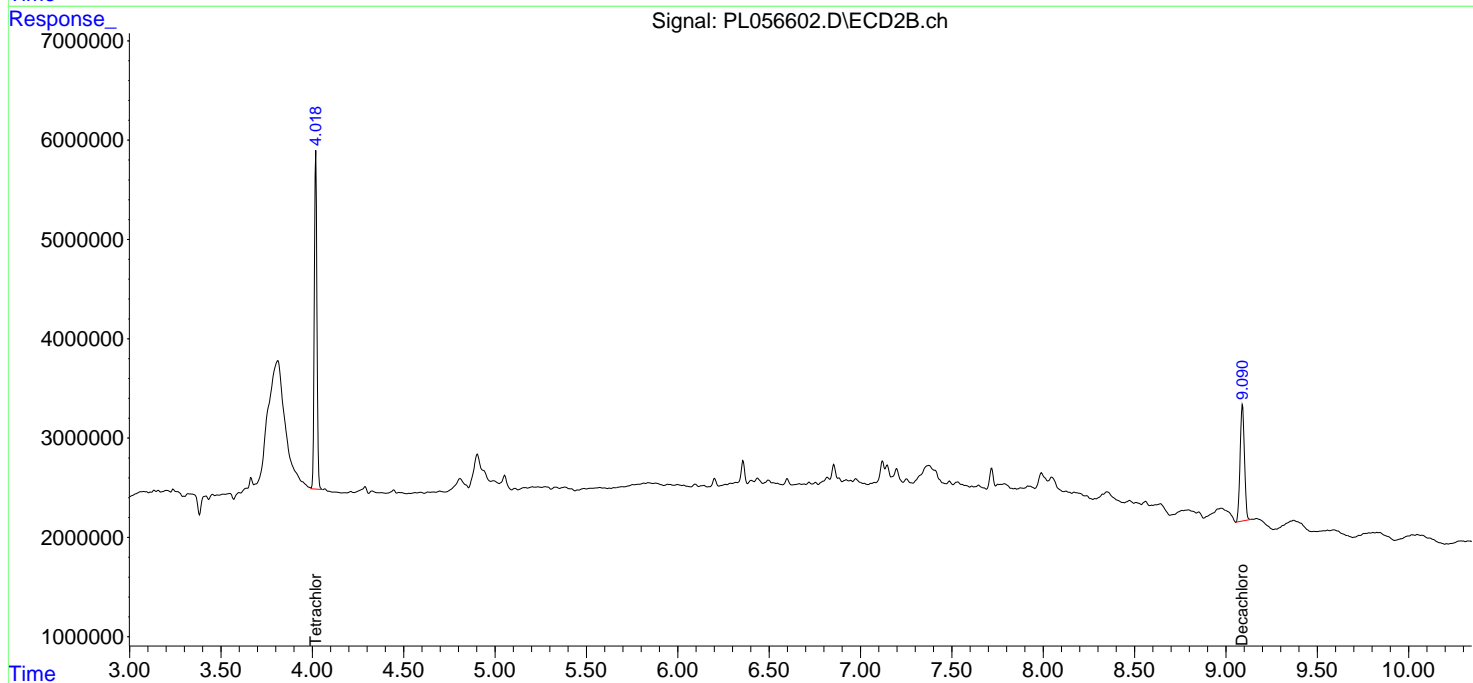
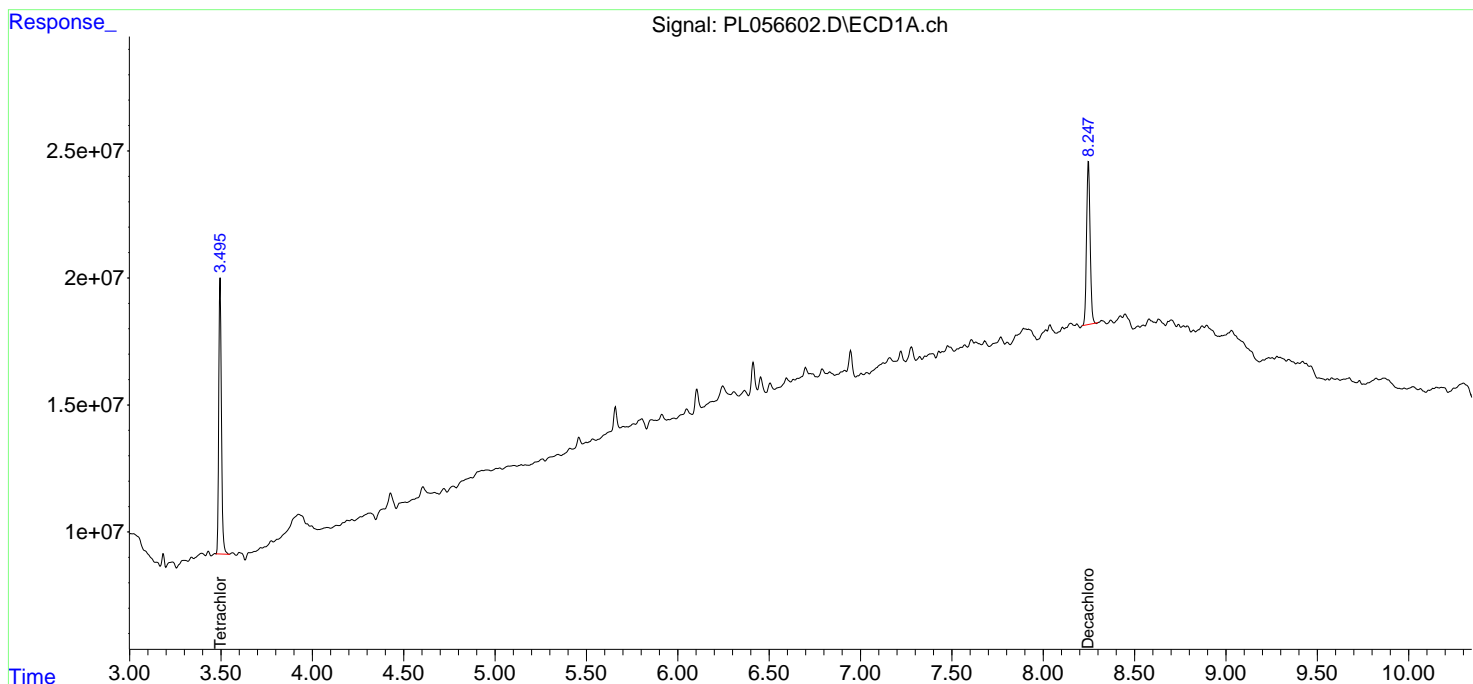
(f)=RT Delta > 1/2 Window (#)=Amounts differ by > 25% (m)=manual int.

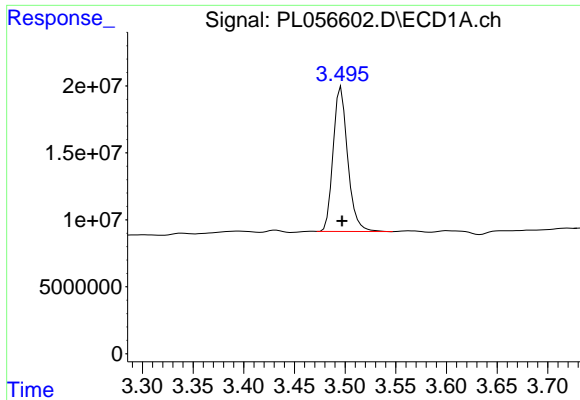
Data Path : Z:\pestpcbsrv\HPCHEM1\ECD\_L\Data\PL021720\  
 Data File : PL056602.D  
 Signal(s) : Signal #1: ECD1A.ch Signal #2: ECD2B.ch  
 Acq On : 17 Feb 2020 18:00  
 Operator : AJ\MA  
 Sample : L1546-13  
 Misc :  
 ALS Vial : 24 Sample Multiplier: 1

Instrument :  
 ECD\_L  
 ClientSampled :

Integration File signal 1: autoint1.e  
 Integration File signal 2: autoint2.e  
 Quant Time: Feb 18 01:03:40 2020  
 Quant Method : Z:\pestpcbsrv\HPCHEM1\ECD\_L\methods\PL021220.M  
 Quant Title : GC Extractables  
 QLast Update : Thu Feb 13 05:32:36 2020  
 Response via : Initial Calibration  
 Integrator: ChemStation

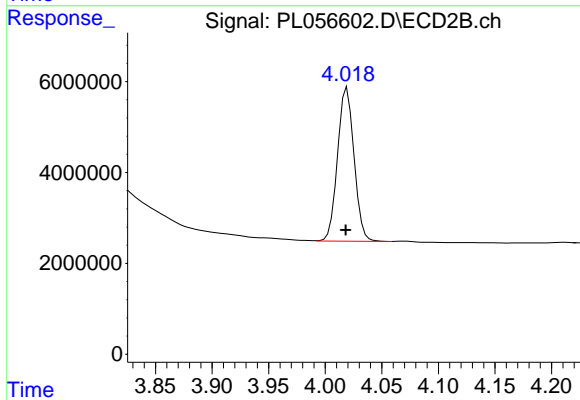
Volume Inj. : 1 µl  
 Signal #1 Phase : ZB-MR2 Signal #2 Phase: ZB-MR1  
 Signal #1 Info : 30M x 0.32mm x0.2 Signal #2 Info : 30M x 0.32mm x0.5µm



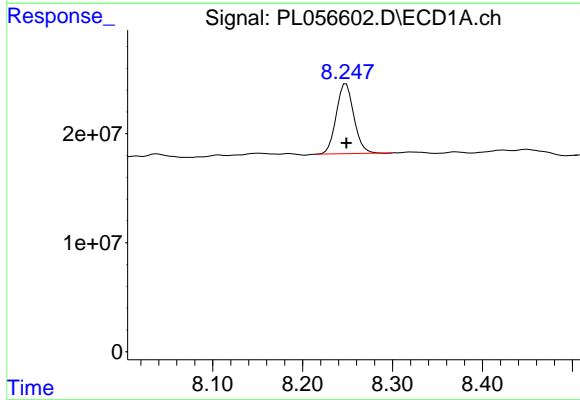


#1 Tetrachloro-m-xylene  
 R.T.: 3.496 min  
 Delta R.T.: 0.000 min  
 Response: 108328530  
 Conc: 12.28 ng/ml

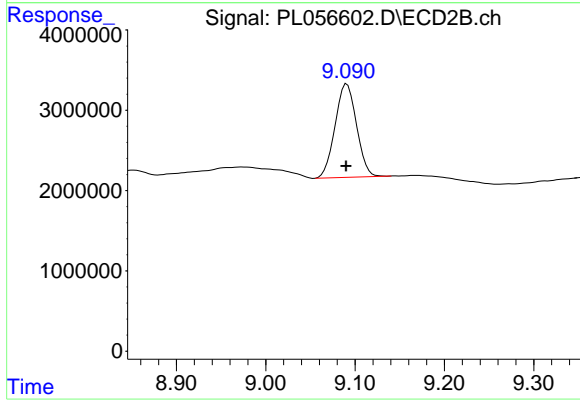
Instrument :  
 ECD\_L  
 ClientSampleId :



#1 Tetrachloro-m-xylene  
 R.T.: 4.019 min  
 Delta R.T.: 0.001 min  
 Response: 34335246  
 Conc: 12.62 ng/ml



#28 Decachlorobiphenyl  
 R.T.: 8.248 min  
 Delta R.T.: 0.000 min  
 Response: 87459630  
 Conc: 9.13 ng/ml



#28 Decachlorobiphenyl  
 R.T.: 9.091 min  
 Delta R.T.: 0.000 min  
 Response: 19451078  
 Conc: 9.54 ng/ml