

Data Path : Z:\pestpcbsrv\HPCHEM1\ECD_L\Data\PL021722\
 Data File : PL072766.D
 Signal(s) : Signal #1: ECD1A.ch Signal #2: ECD2B.ch
 Acq On : 17 Feb 2022 12:22
 Operator : AR\AJ
 Sample : PB142715BS
 Misc :
 ALS Vial : 5 Sample Multiplier: 1

Instrument :
 ECD_L
 ClientSampleId :

Integration File signal 1: autoint1.e
 Integration File signal 2: autoint2.e
 Quant Time: Feb 18 02:10:28 2022
 Quant Method : Z:\pestpcbsrv\HPCHEM1\ECD_L\methods\PL020722.M
 Quant Title : GC Extractables
 QLast Update : Tue Feb 08 05:14:10 2022
 Response via : Initial Calibration
 Integrator: ChemStation

Volume Inj. : 1 µl
 Signal #1 Phase : ZB-MR2 Signal #2 Phase: ZB-MR1
 Signal #1 Info : 30M x 0.32mm x0.2 Signal #2 Info : 30M x 0.32mm x0.5µm

Compound	RT#1	RT#2	Resp#1	Resp#2	ng/ml	ng/ml

System Monitoring Compounds						
1) SA Tetrachlo...	4.559	5.489	8295452	29385167	17.228	17.011
28) SA Decachlor...	10.316	11.381	15131018	33706991	19.987	21.256
Target Compounds						
2) A alpha-BHC	5.265	6.072	27788695	105.7E6	42.146	44.135
3) MA gamma-BHC...	5.688	6.468	27261638	99628044	43.377	43.270
4) MA Heptachlor	6.093	7.113	42903336	102.0E6	58.777	44.778
5) MB Aldrin	6.416	7.483	29182395	99941240	45.198	46.750
6) B beta-BHC	6.093f	6.728	42903336	48715998	173.144	47.788 #
7) B delta-BHC	6.331	6.994	27786491	98300973	41.966	42.907
8) B Heptachlo...	6.994	7.951	29097025	93214941	46.153	48.316
9) A Endosulfan I	7.396	8.356	27627101	86602601	47.222	49.502
10) B gamma-Chl...	7.272	8.221	29744398	94933152	46.955	49.080
11) B alpha-Chl...	7.341	8.301	29956358	92459775	47.044	48.664
12) B 4,4'-DDE	7.556	8.492	29070132	89976715	47.836	48.140
13) MA Dieldrin	7.682	8.645	29941355	92083795	47.413	49.410
14) MA Endrin	7.973	8.885	26781484	75577716	45.717	47.966
15) B Endosulfa...	8.286	9.121	28218193	82261887	46.381	48.927
16) A 4,4'-DDD	8.142	9.033	24086749	71849347	50.067	51.922
17) MA 4,4'-DDT	8.402	9.349	25002246	72905142	46.465	47.624
18) B Endrin al...	8.475	9.257	23362030	64850955	53.597	57.621
19) B Endosulfa...	8.706	9.494	28139748	75611831	47.286	50.543
20) A Methoxychlor	8.998	9.837	15949518	36421731	45.360	44.984
21) B Endrin ke...	9.223	9.990	32721741	84270704	47.611	52.891
22) Mirex	9.404	10.452	31666649	69050651	53.378	58.822
23) Chlordane-1	5.863f	6.888	96097	489392	5.178	6.822 #
24) Chlordane-2	6.568	7.483f	53880	99941240	2.131	1297.752 #
25) Chlordane-3	7.272	8.221	29744398	94933152	441.305	317.674 #
26) Chlordane-4	7.341	8.301	29956358	92459775	408.259	259.139 #
27) Chlordane-5	8.286	9.192	28218193	21388	1099.891	0.350 #

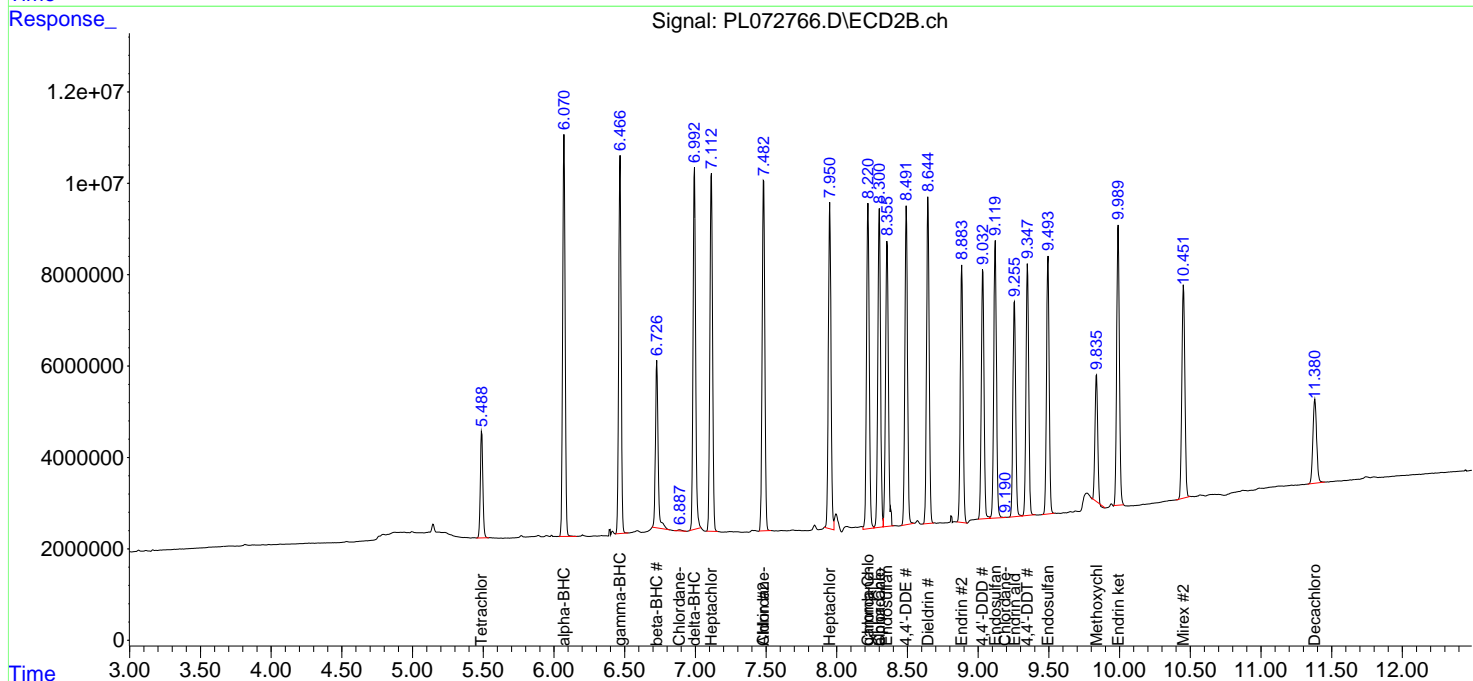
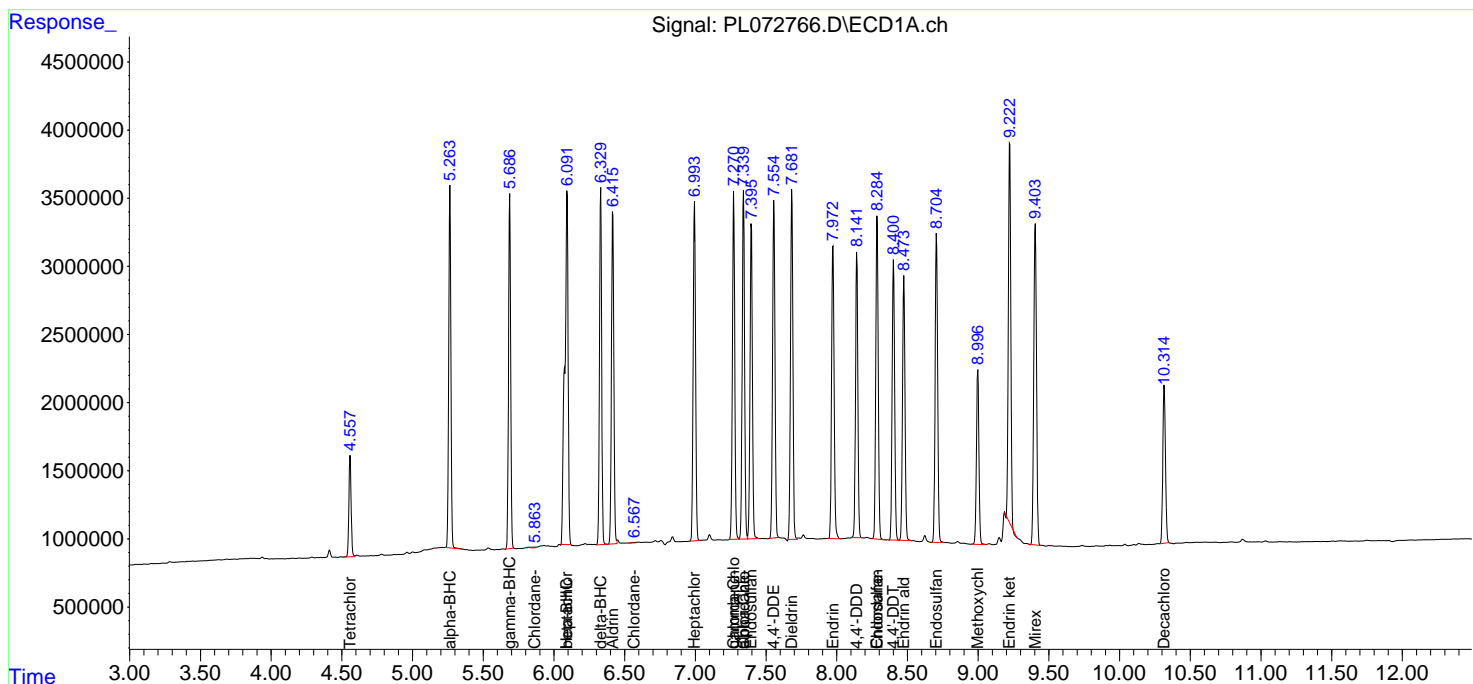
(f)=RT Delta > 1/2 Window (#)=Amounts differ by > 25% (m)=manual int.

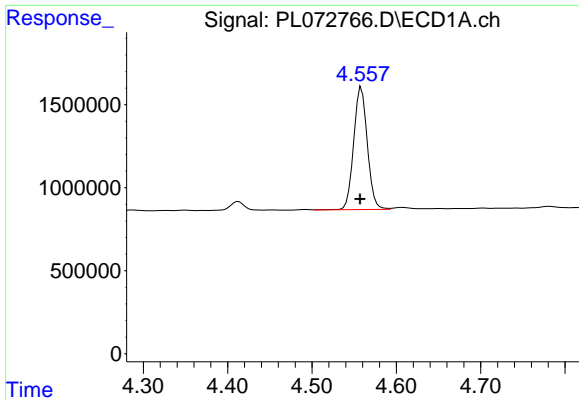
Data Path : Z:\pestpcbsrv\HPCHEM1\ECD_L\Data\PL021722\
 Data File : PL072766.D
 Signal(s) : Signal #1: ECD1A.ch Signal #2: ECD2B.ch
 Acq On : 17 Feb 2022 12:22
 Operator : AR\AJ
 Sample : PB142715BS
 Misc :
 ALS Vial : 5 Sample Multiplier: 1

Instrument :
 ECD_L
 ClientSampleId :

Integration File signal 1: autoint1.e
 Integration File signal 2: autoint2.e
 Quant Time: Feb 18 02:10:28 2022
 Quant Method : Z:\pestpcbsrv\HPCHEM1\ECD_L\methods\PL020722.M
 Quant Title : GC Extractables
 QLast Update : Tue Feb 08 05:14:10 2022
 Response via : Initial Calibration
 Integrator: ChemStation

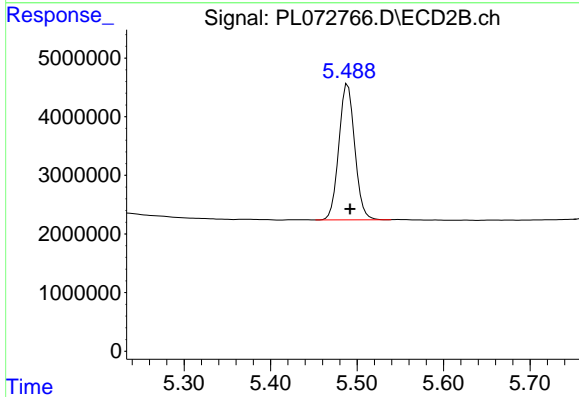
Volume Inj. : 1 µl
 Signal #1 Phase : ZB-MR2 Signal #2 Phase: ZB-MR1
 Signal #1 Info : 30M x 0.32mm x0.2 Signal #2 Info : 30M x 0.32mm x0.5µm



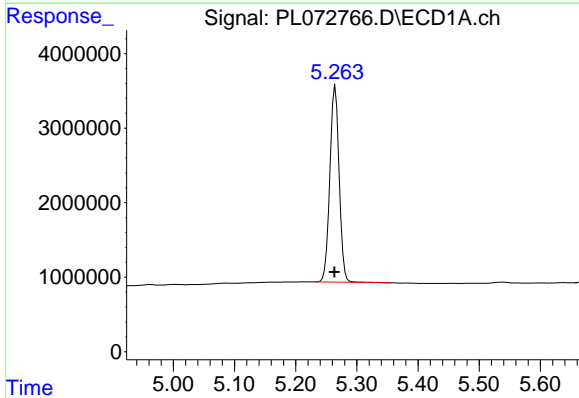


#1 Tetrachloro-m-xylene
 R.T.: 4.559 min
 Delta R.T.: 0.002 min
 Response: 8295452
 Conc: 17.23 ng/ml

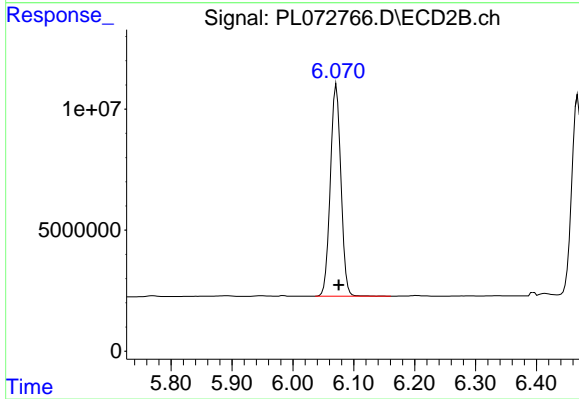
Instrument :
 ECD_L
 ClientSampleId :



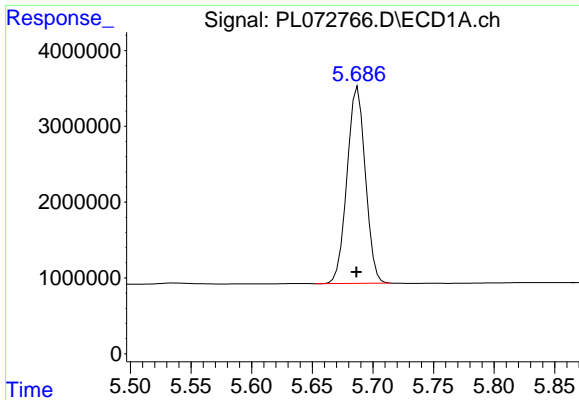
#1 Tetrachloro-m-xylene
 R.T.: 5.489 min
 Delta R.T.: -0.003 min
 Response: 29385167
 Conc: 17.01 ng/ml



#2 alpha-BHC
 R.T.: 5.265 min
 Delta R.T.: 0.002 min
 Response: 27788695
 Conc: 42.15 ng/ml

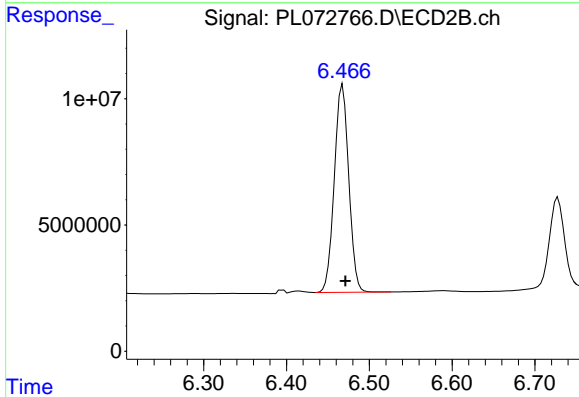


#2 alpha-BHC
 R.T.: 6.072 min
 Delta R.T.: -0.003 min
 Response: 105691895
 Conc: 44.14 ng/ml

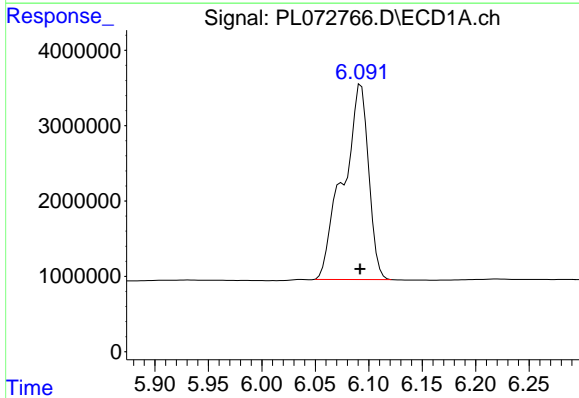


#3 gamma-BHC (Lindane)
 R.T.: 5.688 min
 Delta R.T.: 0.001 min
 Response: 27261638
 Conc: 43.38 ng/ml

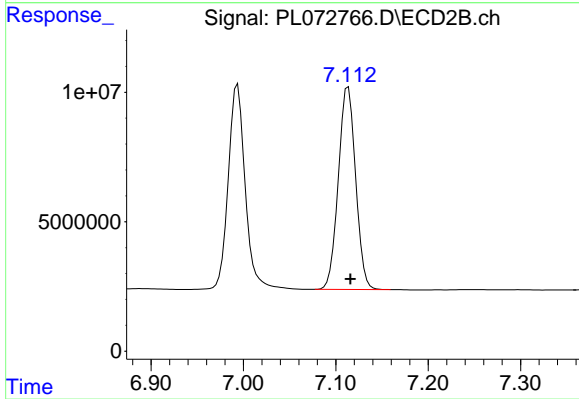
Instrument :
 ECD_L
 ClientSampleId :



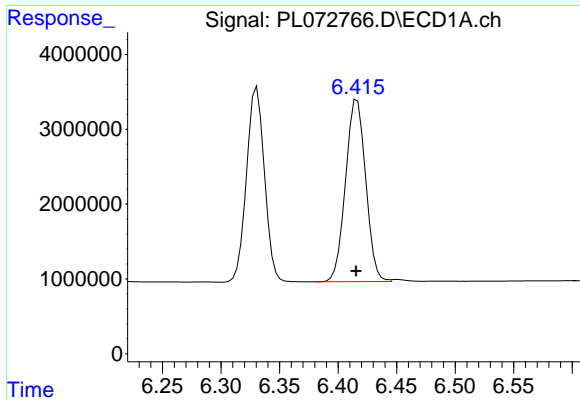
#3 gamma-BHC (Lindane)
 R.T.: 6.468 min
 Delta R.T.: -0.003 min
 Response: 99628044
 Conc: 43.27 ng/ml



#4 Heptachlor
 R.T.: 6.093 min
 Delta R.T.: 0.000 min
 Response: 42903336
 Conc: 58.78 ng/ml

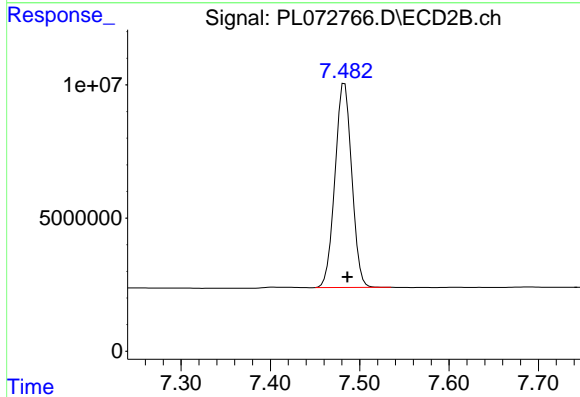


#4 Heptachlor
 R.T.: 7.113 min
 Delta R.T.: -0.003 min
 Response: 101953298
 Conc: 44.78 ng/ml

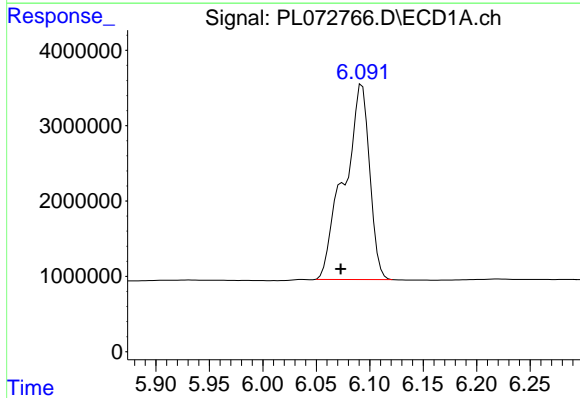


#5 Aldrin
 R.T.: 6.416 min
 Delta R.T.: 0.000 min
 Response: 29182395
 Conc: 45.20 ng/ml

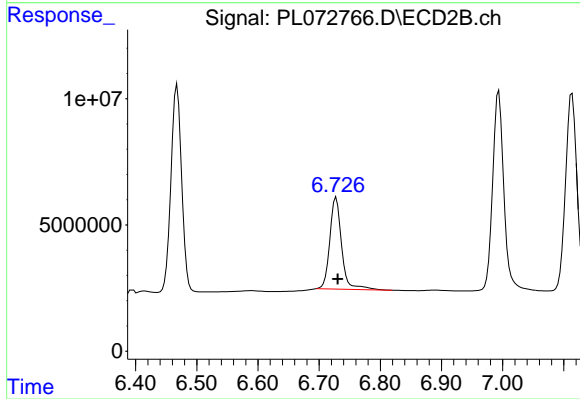
Instrument :
 ECD_L
 ClientSampleId :



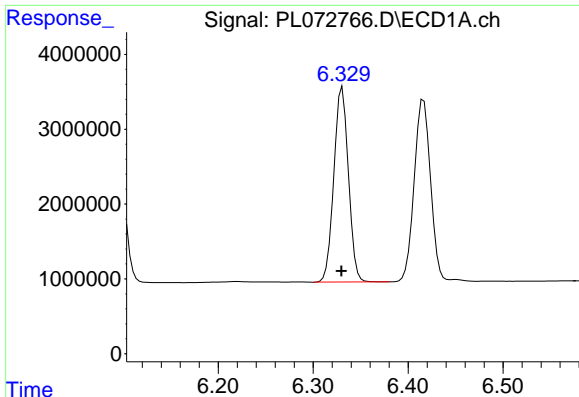
#5 Aldrin
 R.T.: 7.483 min
 Delta R.T.: -0.003 min
 Response: 99941240
 Conc: 46.75 ng/ml



#6 beta-BHC
 R.T.: 6.093 min
 Delta R.T.: 0.020 min
 Response: 42903336
 Conc: 173.14 ng/ml



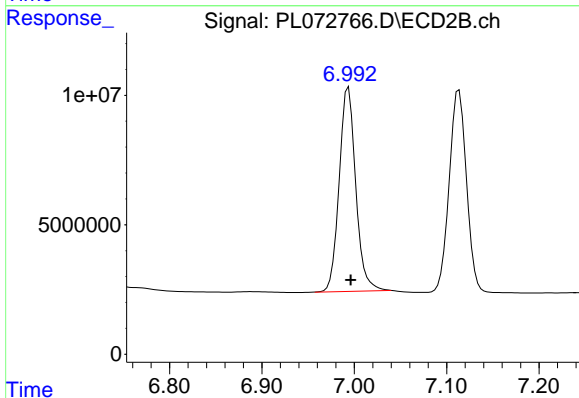
#6 beta-BHC
 R.T.: 6.728 min
 Delta R.T.: -0.003 min
 Response: 48715998
 Conc: 47.79 ng/ml



#7 delta-BHC

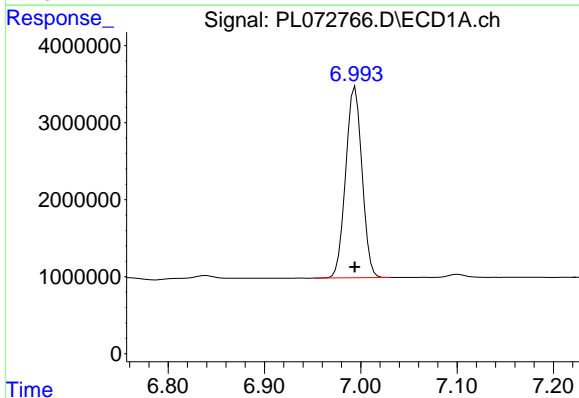
R.T.: 6.331 min
 Delta R.T.: 0.000 min
 Response: 27786491
 Conc: 41.97 ng/ml

Instrument :
 ECD_L
 ClientSampleId :



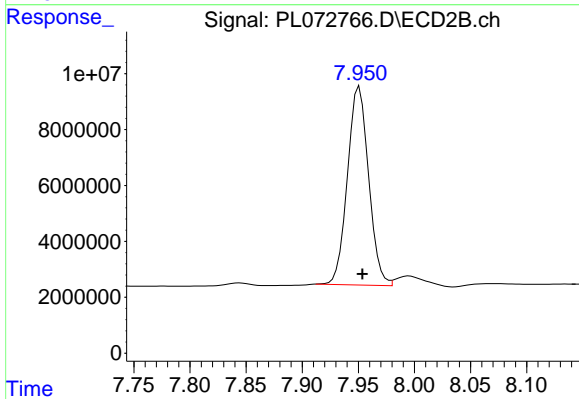
#7 delta-BHC

R.T.: 6.994 min
 Delta R.T.: -0.002 min
 Response: 98300973
 Conc: 42.91 ng/ml



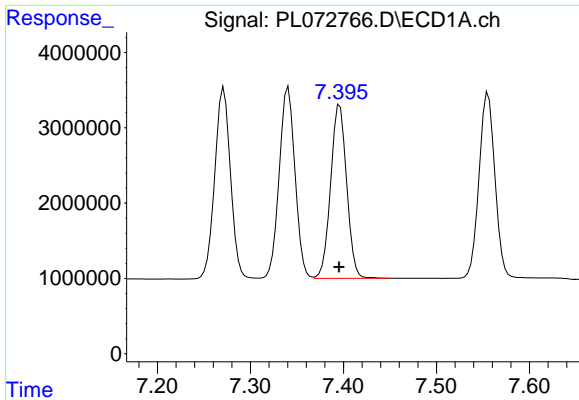
#8 Heptachlor epoxide

R.T.: 6.994 min
 Delta R.T.: 0.000 min
 Response: 29097025
 Conc: 46.15 ng/ml



#8 Heptachlor epoxide

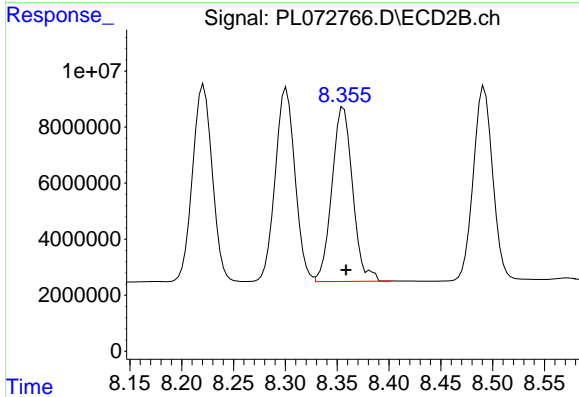
R.T.: 7.951 min
 Delta R.T.: -0.003 min
 Response: 93214941
 Conc: 48.32 ng/ml



#9 Endosulfan I

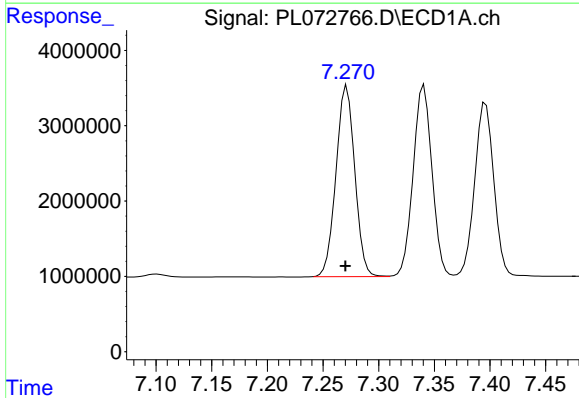
R.T.: 7.396 min
 Delta R.T.: 0.000 min
 Response: 27627101
 Conc: 47.22 ng/ml

Instrument :
 ECD_L
 ClientSampleId :



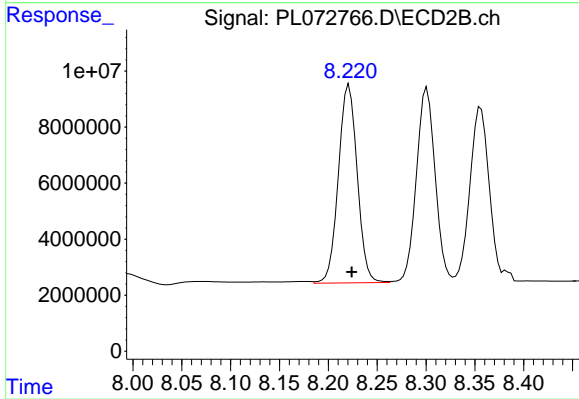
#9 Endosulfan I

R.T.: 8.356 min
 Delta R.T.: -0.003 min
 Response: 86602601
 Conc: 49.50 ng/ml



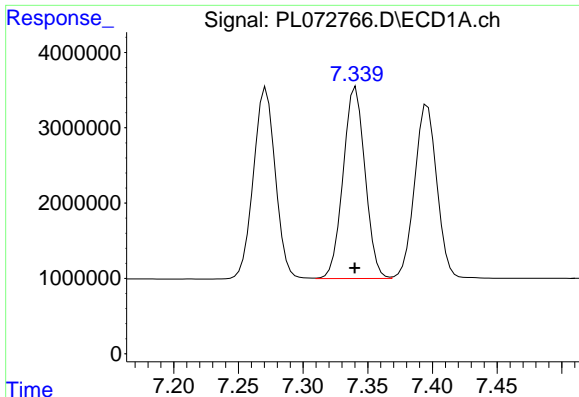
#10 gamma-Chlordane

R.T.: 7.272 min
 Delta R.T.: 0.001 min
 Response: 29744398
 Conc: 46.96 ng/ml



#10 gamma-Chlordane

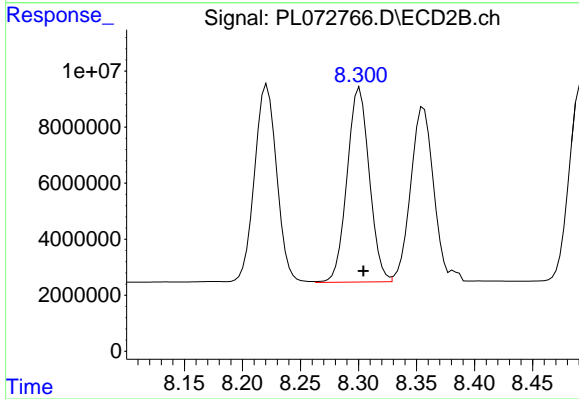
R.T.: 8.221 min
 Delta R.T.: -0.003 min
 Response: 94933152
 Conc: 49.08 ng/ml



#11 alpha-Chlordane

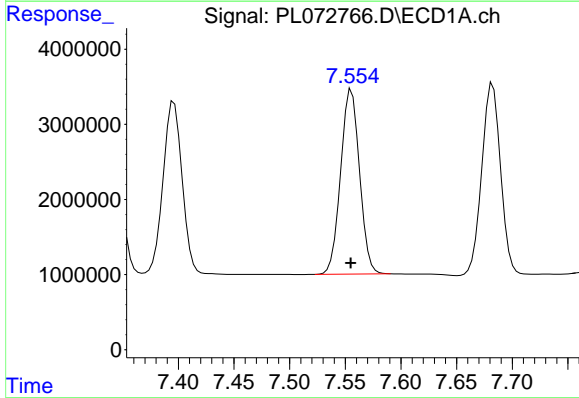
R.T.: 7.341 min
 Delta R.T.: 0.000 min
 Response: 29956358
 Conc: 47.04 ng/ml

Instrument :
 ECD_L
 ClientSampleId :



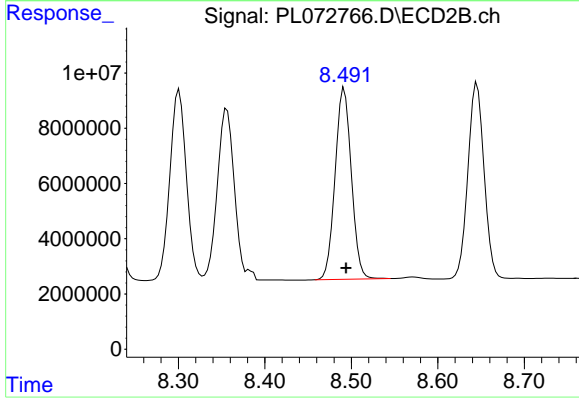
#11 alpha-Chlordane

R.T.: 8.301 min
 Delta R.T.: -0.003 min
 Response: 92459775
 Conc: 48.66 ng/ml



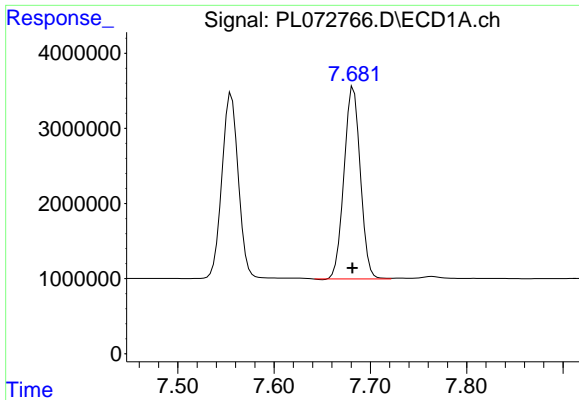
#12 4,4'-DDE

R.T.: 7.556 min
 Delta R.T.: 0.000 min
 Response: 29070132
 Conc: 47.84 ng/ml



#12 4,4'-DDE

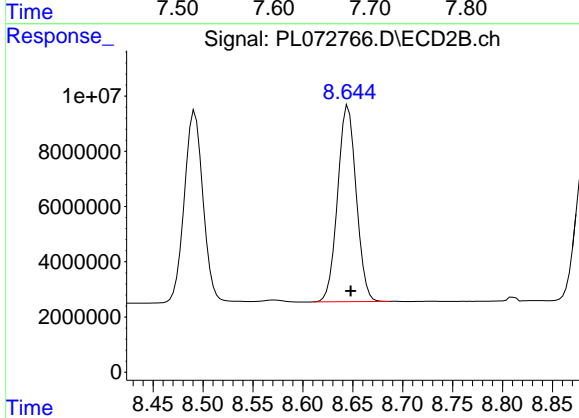
R.T.: 8.492 min
 Delta R.T.: -0.002 min
 Response: 89976715
 Conc: 48.14 ng/ml



#13 Dieldrin

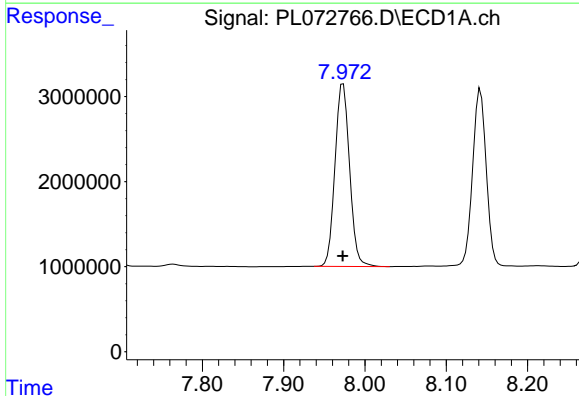
R.T.: 7.682 min
 Delta R.T.: 0.001 min
 Response: 29941355
 Conc: 47.41 ng/ml

Instrument :
 ECD_L
 ClientSampleId :



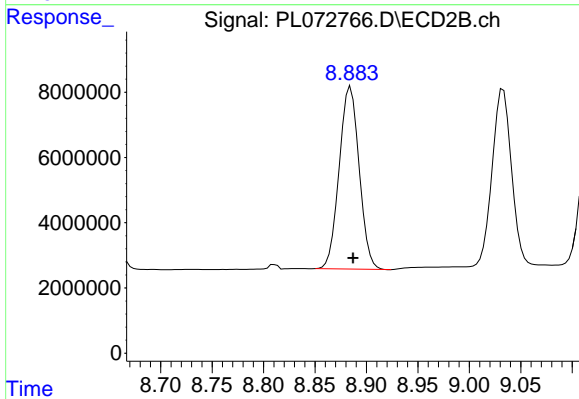
#13 Dieldrin

R.T.: 8.645 min
 Delta R.T.: -0.003 min
 Response: 92083795
 Conc: 49.41 ng/ml



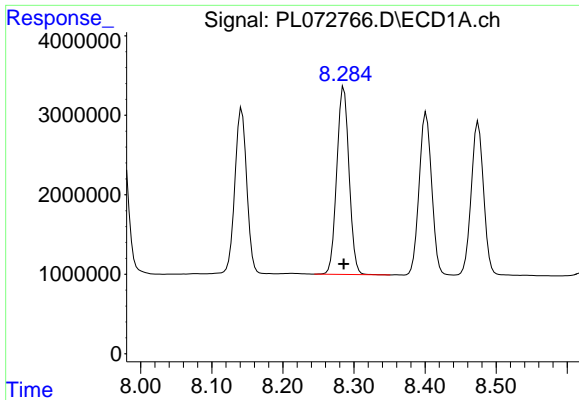
#14 Endrin

R.T.: 7.973 min
 Delta R.T.: 0.000 min
 Response: 26781484
 Conc: 45.72 ng/ml



#14 Endrin

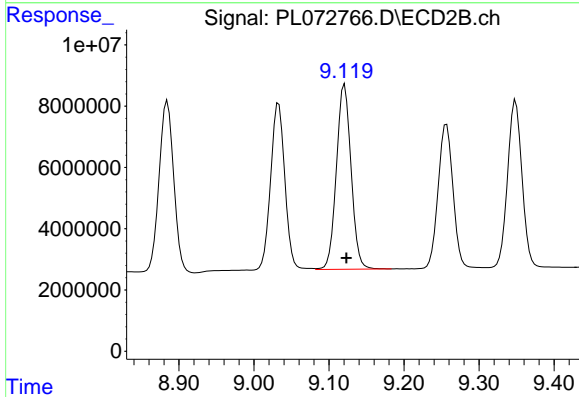
R.T.: 8.885 min
 Delta R.T.: -0.003 min
 Response: 75577716
 Conc: 47.97 ng/ml



#15 Endosulfan II

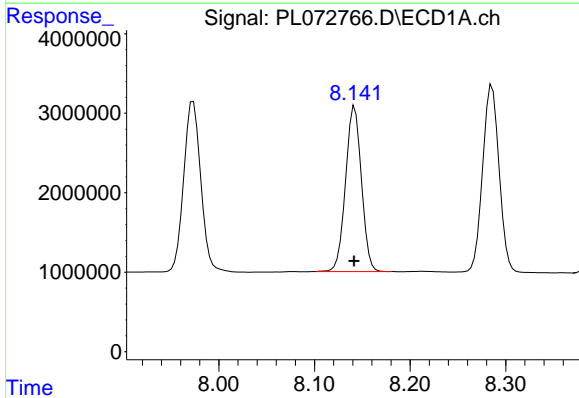
R.T.: 8.286 min
 Delta R.T.: 0.000 min
 Response: 28218193
 Conc: 46.38 ng/ml

Instrument :
 ECD_L
 ClientSampleId :



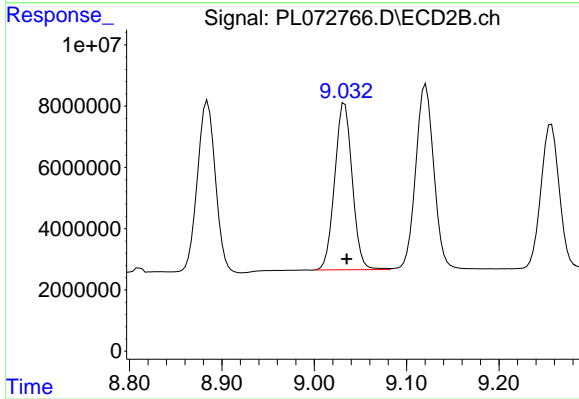
#15 Endosulfan II

R.T.: 9.121 min
 Delta R.T.: -0.002 min
 Response: 82261887
 Conc: 48.93 ng/ml



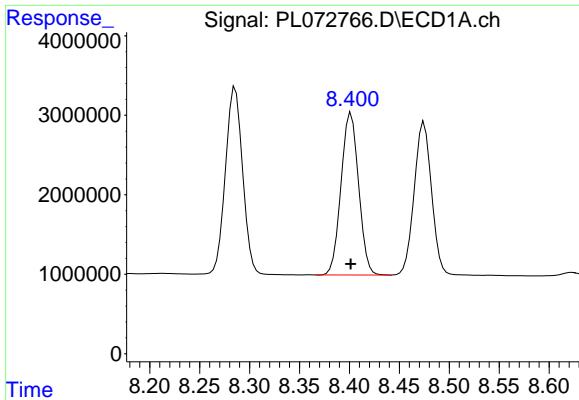
#16 4,4'-DDD

R.T.: 8.142 min
 Delta R.T.: 0.000 min
 Response: 24086749
 Conc: 50.07 ng/ml



#16 4,4'-DDD

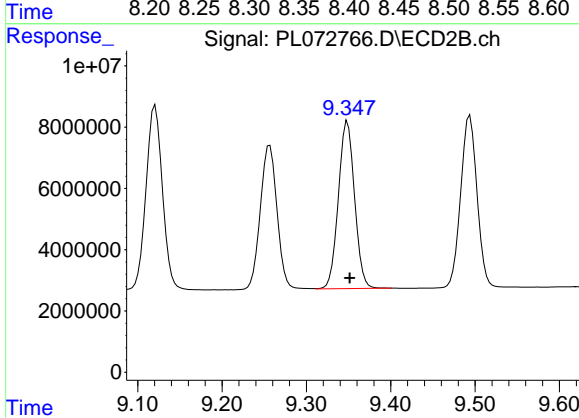
R.T.: 9.033 min
 Delta R.T.: -0.002 min
 Response: 71849347
 Conc: 51.92 ng/ml



#17 4,4'-DDT

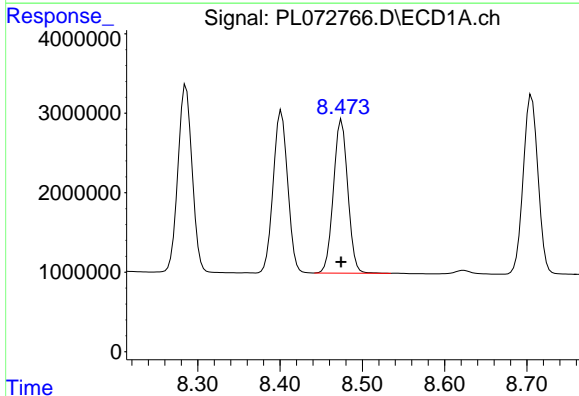
R.T.: 8.402 min
 Delta R.T.: 0.000 min
 Response: 25002246
 Conc: 46.47 ng/ml

Instrument :
 ECD_L
 ClientSampleId :



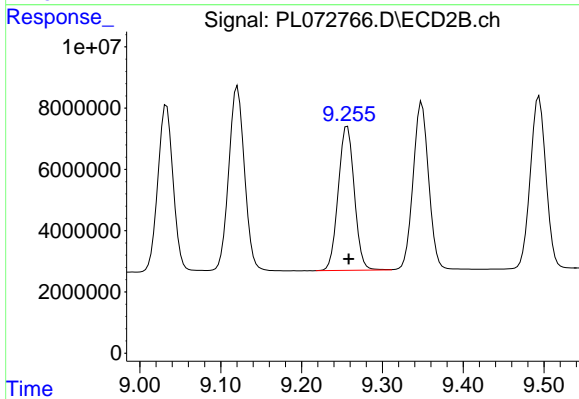
#17 4,4'-DDT

R.T.: 9.349 min
 Delta R.T.: -0.003 min
 Response: 72905142
 Conc: 47.62 ng/ml



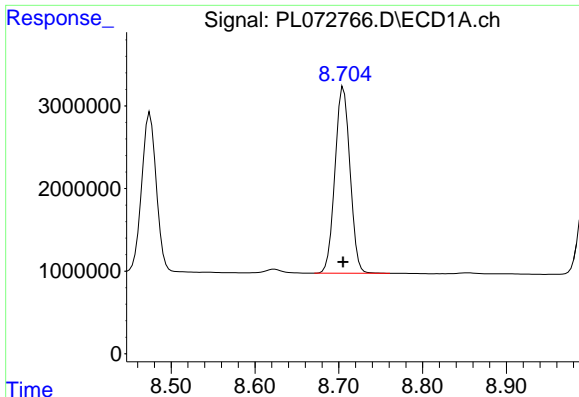
#18 Endrin aldehyde

R.T.: 8.475 min
 Delta R.T.: 0.000 min
 Response: 23362030
 Conc: 53.60 ng/ml



#18 Endrin aldehyde

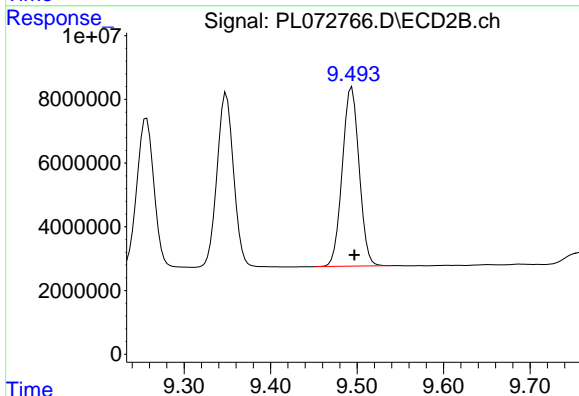
R.T.: 9.257 min
 Delta R.T.: -0.002 min
 Response: 64850955
 Conc: 57.62 ng/ml



#19 Endosulfan Sulfate

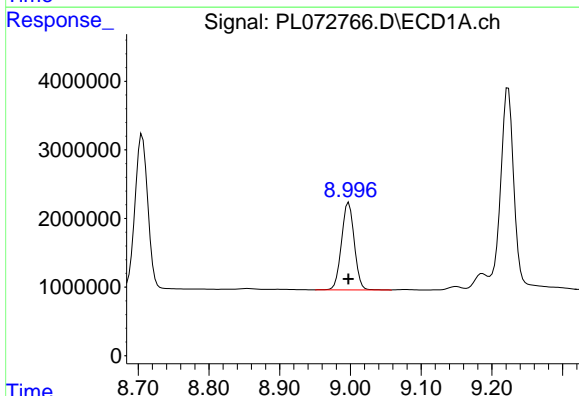
R.T.: 8.706 min
 Delta R.T.: 0.000 min
 Response: 28139748
 Conc: 47.29 ng/ml

Instrument :
 ECD_L
 ClientSampleId :



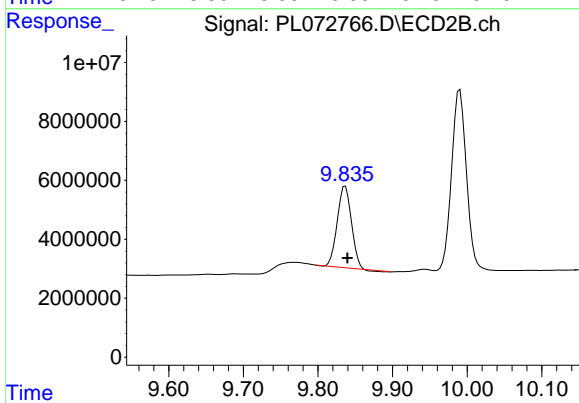
#19 Endosulfan Sulfate

R.T.: 9.494 min
 Delta R.T.: -0.003 min
 Response: 75611831
 Conc: 50.54 ng/ml



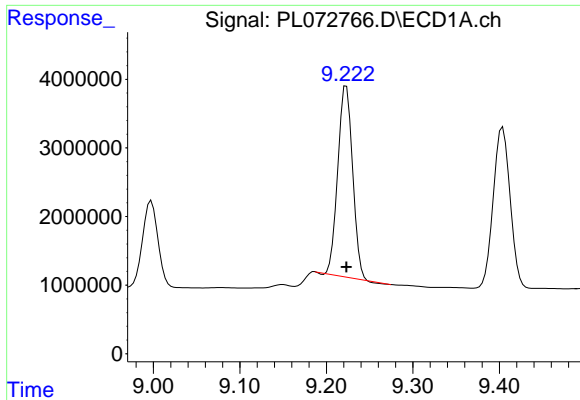
#20 Methoxychlor

R.T.: 8.998 min
 Delta R.T.: 0.000 min
 Response: 15949518
 Conc: 45.36 ng/ml



#20 Methoxychlor

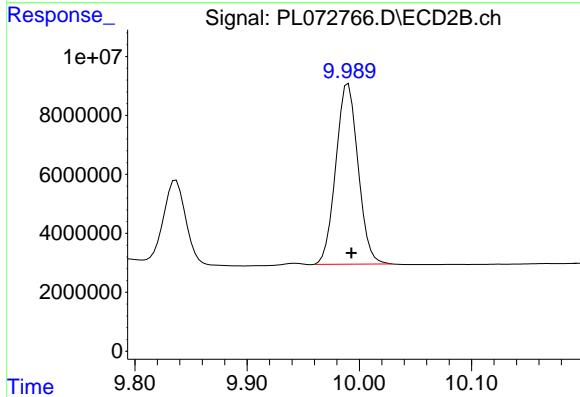
R.T.: 9.837 min
 Delta R.T.: -0.003 min
 Response: 36421731
 Conc: 44.98 ng/ml



#21 Endrin ketone

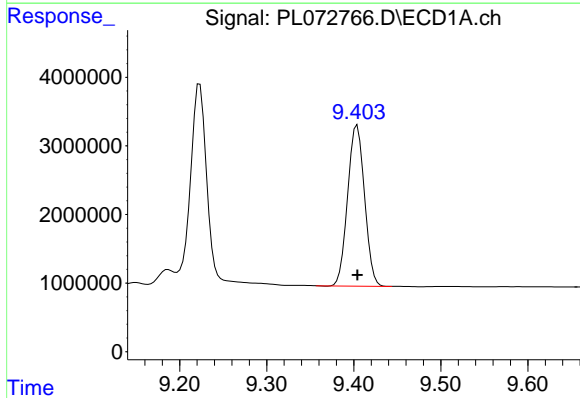
R.T.: 9.223 min
 Delta R.T.: 0.000 min
 Response: 32721741
 Conc: 47.61 ng/ml

Instrument :
 ECD_L
 ClientSampleId :



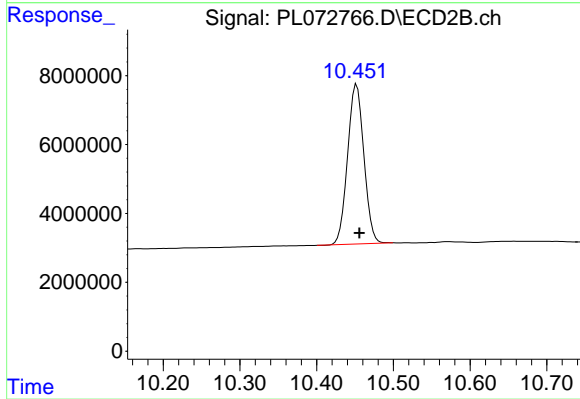
#21 Endrin ketone

R.T.: 9.990 min
 Delta R.T.: -0.003 min
 Response: 84270704
 Conc: 52.89 ng/ml



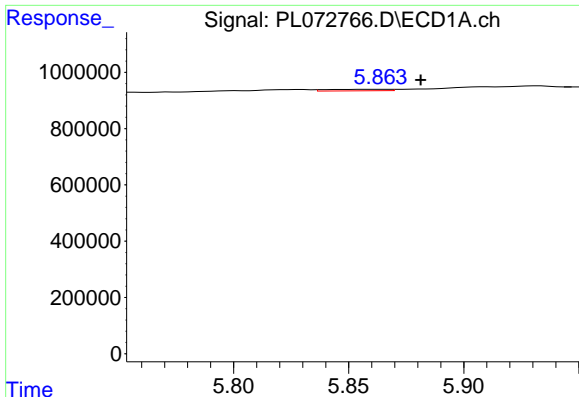
#22 Mirex

R.T.: 9.404 min
 Delta R.T.: 0.000 min
 Response: 31666649
 Conc: 53.38 ng/ml



#22 Mirex

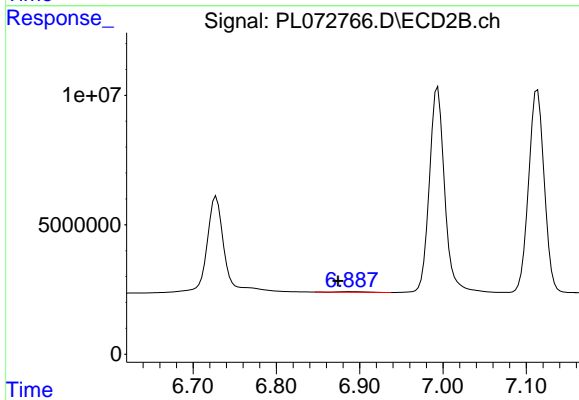
R.T.: 10.452 min
 Delta R.T.: -0.004 min
 Response: 69050651
 Conc: 58.82 ng/ml



#23 Chlordane-1

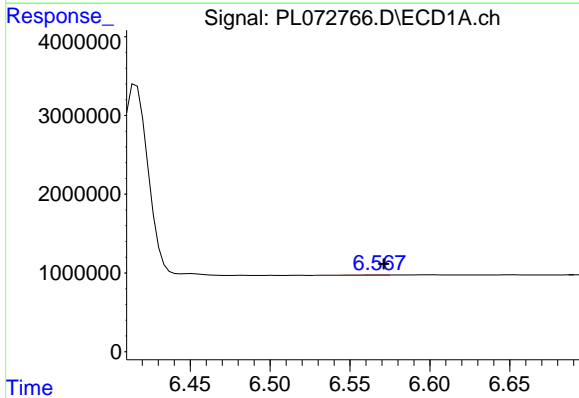
R.T.: 5.863 min
 Delta R.T.: -0.018 min
 Response: 96097
 Conc: 5.18 ng/ml

Instrument :
 ECD_L
 ClientSampleId :



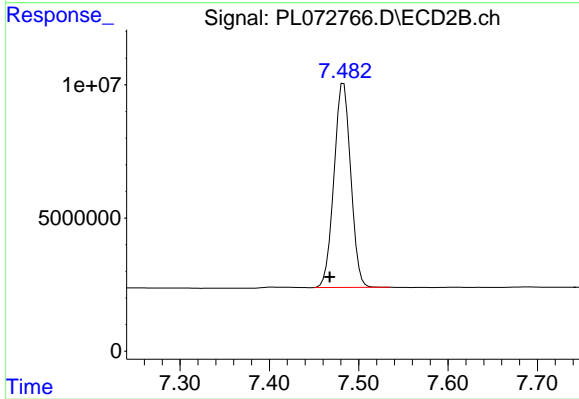
#23 Chlordane-1

R.T.: 6.888 min
 Delta R.T.: 0.014 min
 Response: 489392
 Conc: 6.82 ng/ml



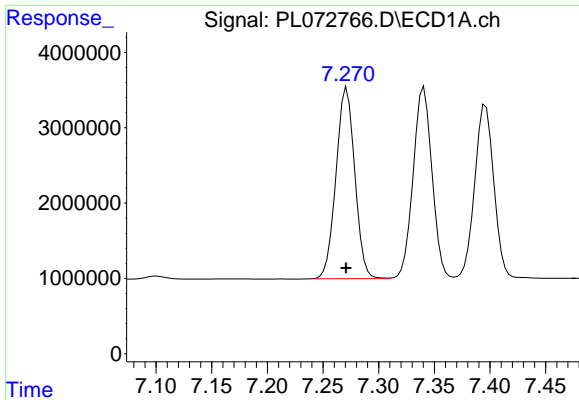
#24 Chlordane-2

R.T.: 6.568 min
 Delta R.T.: -0.003 min
 Response: 53880
 Conc: 2.13 ng/ml



#24 Chlordane-2

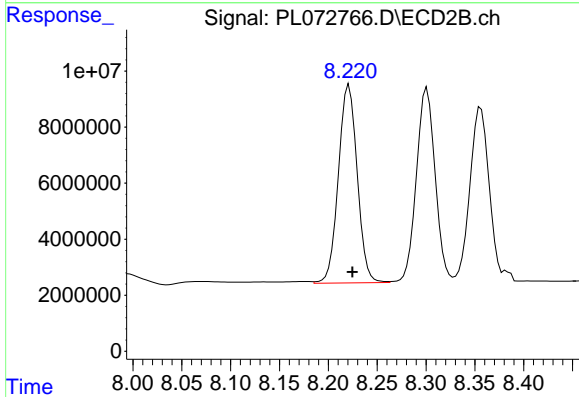
R.T.: 7.483 min
 Delta R.T.: 0.016 min
 Response: 99941240
 Conc: 1297.75 ng/ml



#25 Chlordane-3

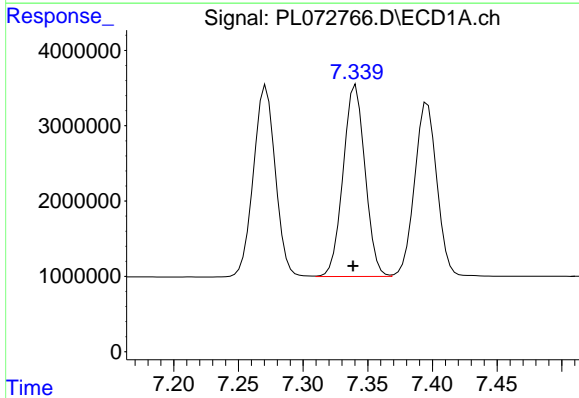
R.T.: 7.272 min
 Delta R.T.: 0.000 min
 Response: 29744398
 Conc: 441.31 ng/ml

Instrument :
 ECD_L
 ClientSampleId :



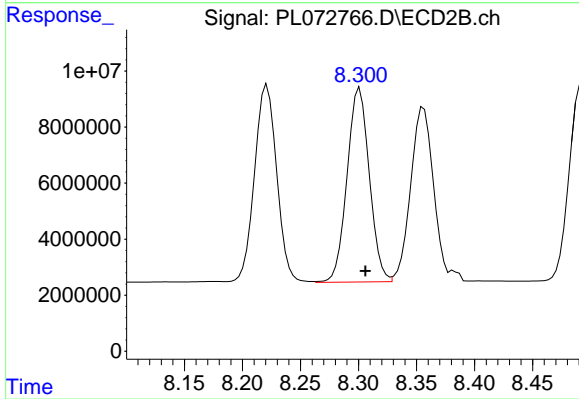
#25 Chlordane-3

R.T.: 8.221 min
 Delta R.T.: -0.003 min
 Response: 94933152
 Conc: 317.67 ng/ml



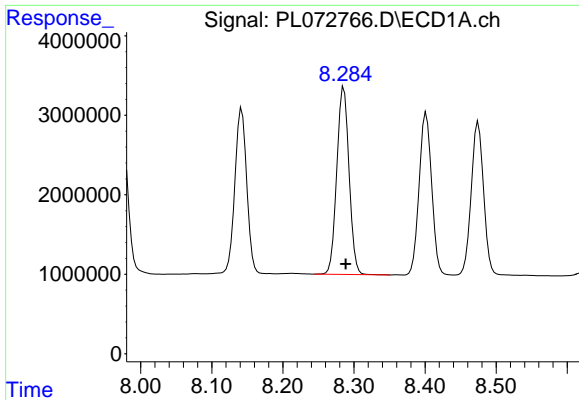
#26 Chlordane-4

R.T.: 7.341 min
 Delta R.T.: 0.002 min
 Response: 29956358
 Conc: 408.26 ng/ml



#26 Chlordane-4

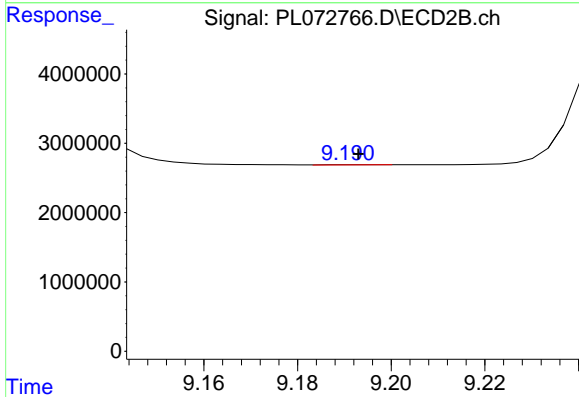
R.T.: 8.301 min
 Delta R.T.: -0.005 min
 Response: 92459775
 Conc: 259.14 ng/ml



#27 Chlordane-5

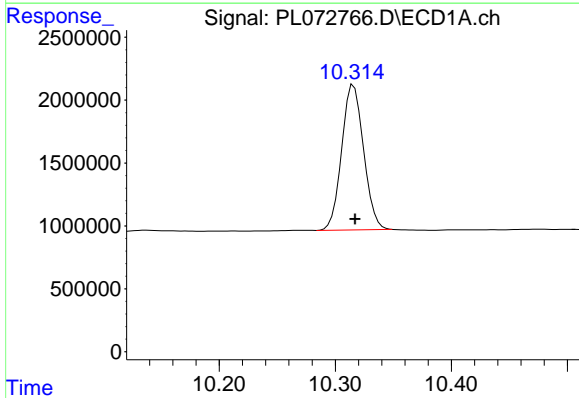
R.T.: 8.286 min
 Delta R.T.: -0.003 min
 Response: 28218193
 Conc: 1099.89 ng/ml

Instrument :
 ECD_L
 ClientSampleId :



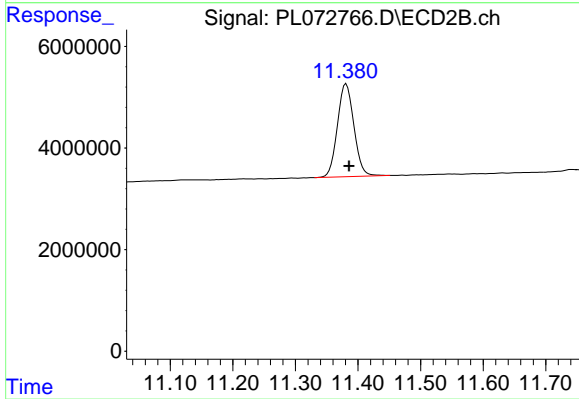
#27 Chlordane-5

R.T.: 9.192 min
 Delta R.T.: 0.000 min
 Response: 21388
 Conc: 0.35 ng/ml



#28 Decachlorobiphenyl

R.T.: 10.316 min
 Delta R.T.: -0.001 min
 Response: 15131018
 Conc: 19.99 ng/ml



#28 Decachlorobiphenyl

R.T.: 11.381 min
 Delta R.T.: -0.005 min
 Response: 33706991
 Conc: 21.26 ng/ml