

Data Path : Z:\pestpcbsrv\HPCHEM1\ECD_L\Data\PL021820\
 Data File : PL056637.D
 Signal(s) : Signal #1: ECD1A.ch Signal #2: ECD2B.ch
 Acq On : 18 Feb 2020 17:26
 Operator : AJ\MA
 Sample : L1558-02
 Misc :
 ALS Vial : 18 Sample Multiplier: 1

Instrument :
 ECD_L
 ClientSampleId :
 0167-COMP-BT-B

Integration File signal 1: autoint1.e
 Integration File signal 2: autoint2.e
 Quant Time: Feb 19 00:35:00 2020
 Quant Method : Z:\pestpcbsrv\HPCHEM1\ECD_L\methods\PL021220.M
 Quant Title : GC Extractables
 QLast Update : Thu Feb 13 05:32:36 2020
 Response via : Initial Calibration
 Integrator: ChemStation

Volume Inj. : 1 µl
 Signal #1 Phase : ZB-MR2 Signal #2 Phase: ZB-MR1
 Signal #1 Info : 30M x 0.32mm x0.2 Signal #2 Info : 30M x 0.32mm x0.5µm

Compound	RT#1	RT#2	Resp#1	Resp#2	ng/ml	ng/ml

System Monitoring Compounds						
1) SA Tetrachlo...	3.496	4.020	224.4E6	68622453	25.435	25.225
28) SA Decachlor...	8.249	9.094	212.6E6	46015686	22.189	22.559

Target Compounds

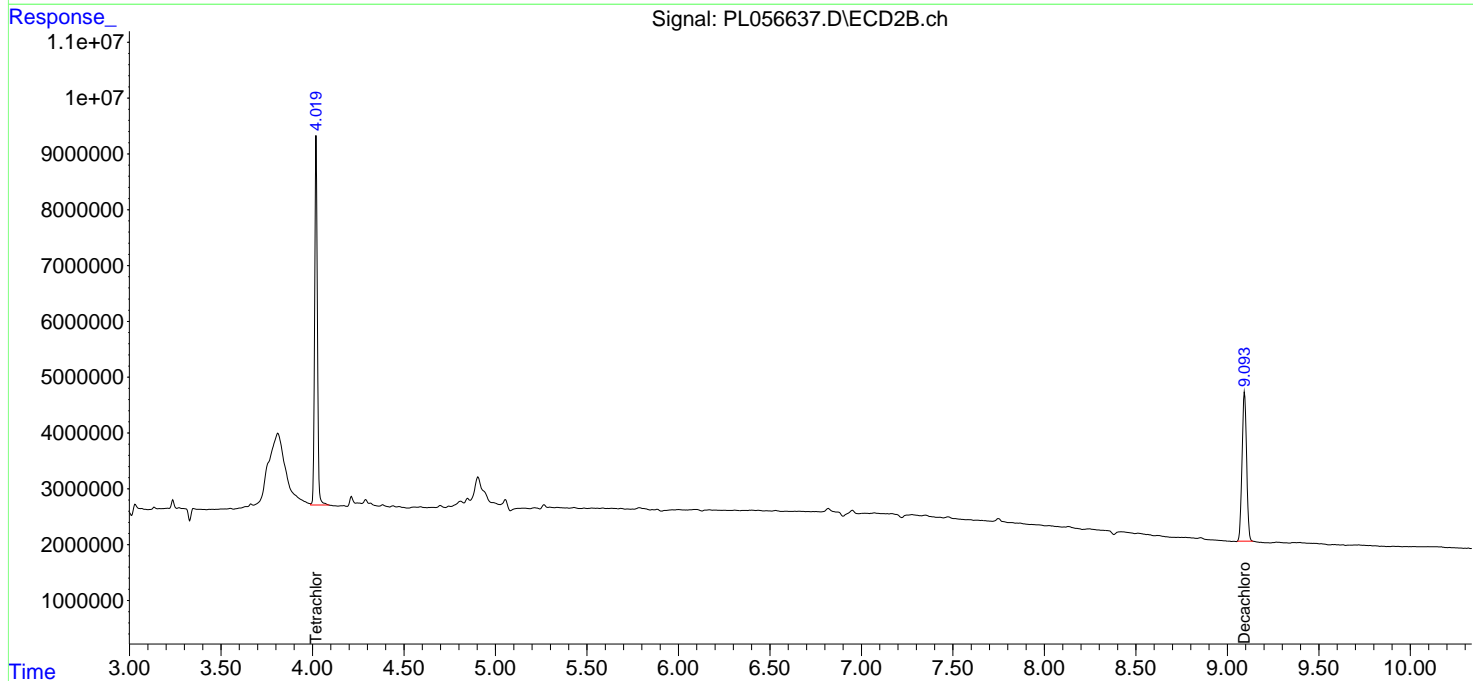
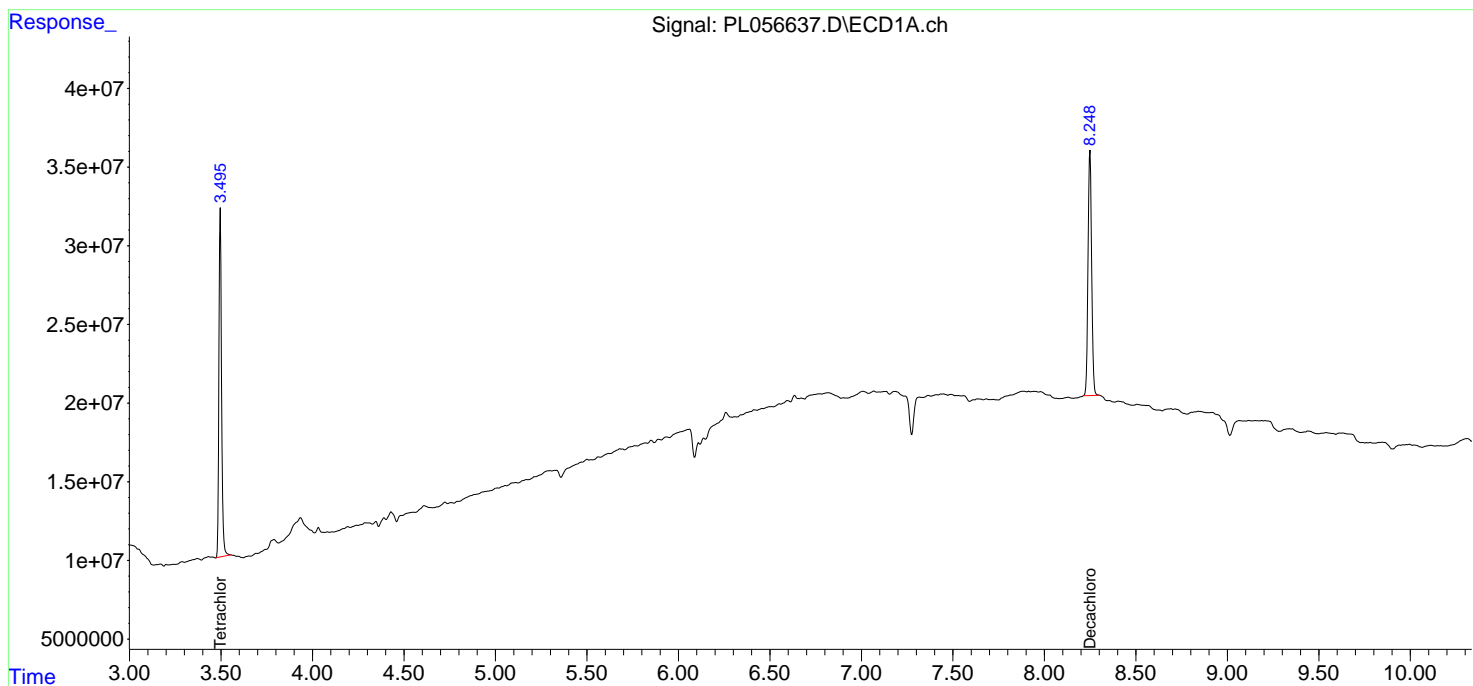
 (f)=RT Delta > 1/2 Window (#)=Amounts differ by > 25% (m)=manual int.

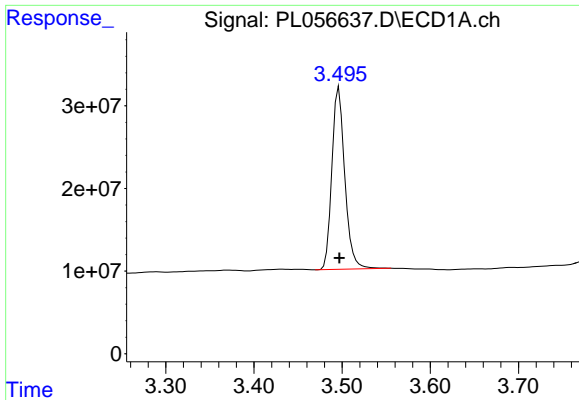
Data Path : Z:\pestpcbsrv\HPCHEM1\ECD_L\Data\PL021820\
 Data File : PL056637.D
 Signal(s) : Signal #1: ECD1A.ch Signal #2: ECD2B.ch
 Acq On : 18 Feb 2020 17:26
 Operator : AJ\MA
 Sample : L1558-02
 Misc :
 ALS Vial : 18 Sample Multiplier: 1

Instrument :
 ECD_L
 ClientSampleId :
 0167-COMP-BT-B

Integration File signal 1: autoint1.e
 Integration File signal 2: autoint2.e
 Quant Time: Feb 19 00:35:00 2020
 Quant Method : Z:\pestpcbsrv\HPCHEM1\ECD_L\methods\PL021220.M
 Quant Title : GC Extractables
 QLast Update : Thu Feb 13 05:32:36 2020
 Response via : Initial Calibration
 Integrator: ChemStation

Volume Inj. : 1 µl
 Signal #1 Phase : ZB-MR2 Signal #2 Phase: ZB-MR1
 Signal #1 Info : 30M x 0.32mm x0.2 Signal #2 Info : 30M x 0.32mm x0.5µm

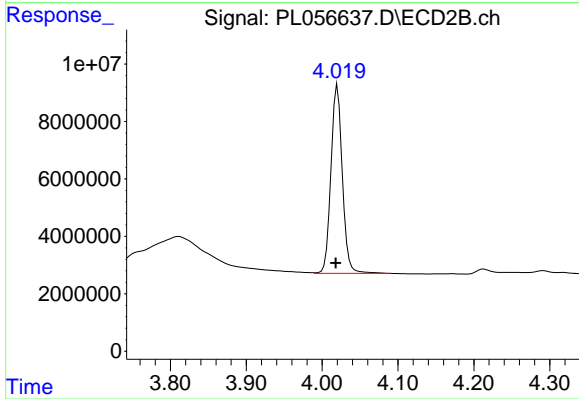




#1 Tetrachloro-m-xylene

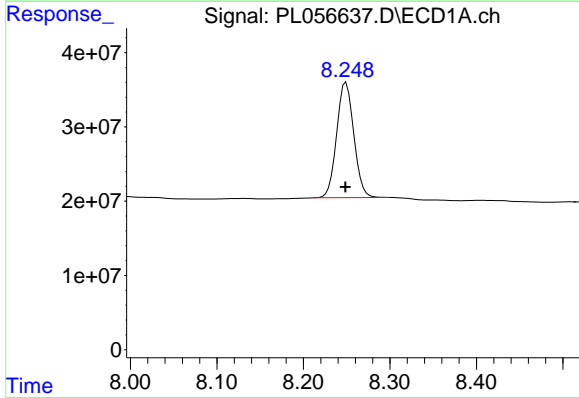
R.T.: 3.496 min
Delta R.T.: 0.000 min
Response: 224424968
Conc: 25.43 ng/ml

Instrument :
ECD_L
ClientSampleId :
0167-COMP-BT-B



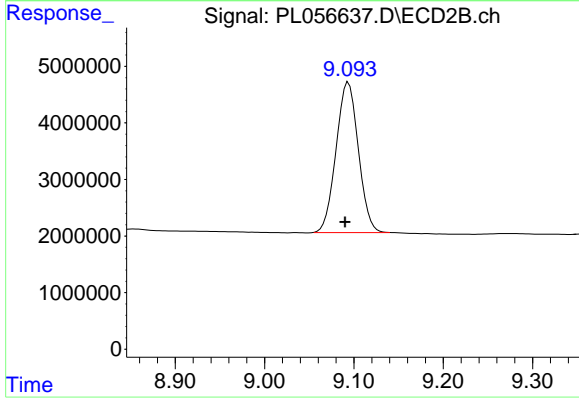
#1 Tetrachloro-m-xylene

R.T.: 4.020 min
Delta R.T.: 0.002 min
Response: 68622453
Conc: 25.22 ng/ml



#28 Decachlorobiphenyl

R.T.: 8.249 min
Delta R.T.: 0.000 min
Response: 212557133
Conc: 22.19 ng/ml



#28 Decachlorobiphenyl

R.T.: 9.094 min
Delta R.T.: 0.004 min
Response: 46015686
Conc: 22.56 ng/ml