

Data Path : Z:\pestpcbsrv\HPCHEM1\ECD\_L\Data\PL021822\  
 Data File : PL072792.D  
 Signal(s) : Signal #1: ECD1A.ch Signal #2: ECD2B.ch  
 Acq On : 18 Feb 2022 12:19  
 Operator : AR\AJ  
 Sample : PB142645BL  
 Misc :  
 ALS Vial : 7 Sample Multiplier: 1

Instrument :  
 ECD\_L  
 ClientSampleId :

Integration File signal 1: autoint1.e  
 Integration File signal 2: autoint2.e  
 Quant Time: Feb 20 21:31:18 2022  
 Quant Method : Z:\pestpcbsrv\HPCHEM1\ECD\_L\methods\PL020722.M  
 Quant Title : GC Extractables  
 QLast Update : Tue Feb 08 05:14:10 2022  
 Response via : Initial Calibration  
 Integrator: ChemStation

Volume Inj. : 1 µl  
 Signal #1 Phase : ZB-MR2 Signal #2 Phase: ZB-MR1  
 Signal #1 Info : 30M x 0.32mm x0.2 Signal #2 Info : 30M x 0.32mm x0.5µm

	Compound	RT#1	RT#2	Resp#1	Resp#2	ng/ml	ng/ml
-----							
System Monitoring Compounds							
1)	SA Tetrachlo...	4.561	5.490	8689020	30043274	18.045	17.392
28)	SA Decachlor...	10.321	11.386	14793546	35296685	19.541	22.258
Target Compounds							
2)	A alpha-BHC	5.279f	0.000	26582	0	0.040	N.D. #
3)	MA gamma-BHC...	5.697	0.000	107261	0	0.171	N.D. #
6)	B beta-BHC	0.000	6.725	0	1345353	N.D.	1.320 #
7)	B delta-BHC	6.348f	7.014f	12728	1739857	0.019	0.759 #
8)	B Heptachlo...	7.004	0.000	39097	0	0.062	N.D. #
9)	A Endosulfan I	7.397	8.379f	11965	319339	0.020	0.183 #
10)	B gamma-Chl...	7.294f	8.233	-1702	274228	N.D.	0.142
11)	B alpha-Chl...	7.321f	8.331f	9763	536519	0.015	0.282 #
12)	B 4,4'-DDE	7.554	0.000	12939	0	0.021	N.D. #
13)	MA Dieldrin	7.669	0.000	34345	0	0.054	N.D. #
14)	MA Endrin	7.997f	8.912f	77433	175805	0.132	0.112
15)	B Endosulfa...	8.264f	9.143f	267980	1132246	0.440	0.673 #
16)	A 4,4'-DDD	8.145	0.000	29469	0	0.061	N.D. #
17)	MA 4,4'-DDT	8.414	0.000	121136	0	0.225	N.D. #
18)	B Endrin al...	8.486	0.000	32787	0	0.075	N.D. #
19)	B Endosulfa...	8.692	9.525f	38259	106214	0.064	0.071
20)	A Methoxychlor	9.001	0.000	46478	0	0.132	N.D. #
21)	B Endrin ke...	0.000	10.017f	0	298758	N.D.	0.188 #
23)	Chlordane-1	5.899f	0.000	28590	0	1.540	N.D. #
24)	Chlordane-2	6.573	7.487f	81166	-7721	3.210	N.D. #
25)	Chlordane-3	7.294f	8.233	-1702	274228	N.D.	0.918
26)	Chlordane-4	7.321f	8.331f	9763	536519	0.133	1.504 #
27)	Chlordane-5	8.264f	0.000	267980	0	10.445	N.D. #

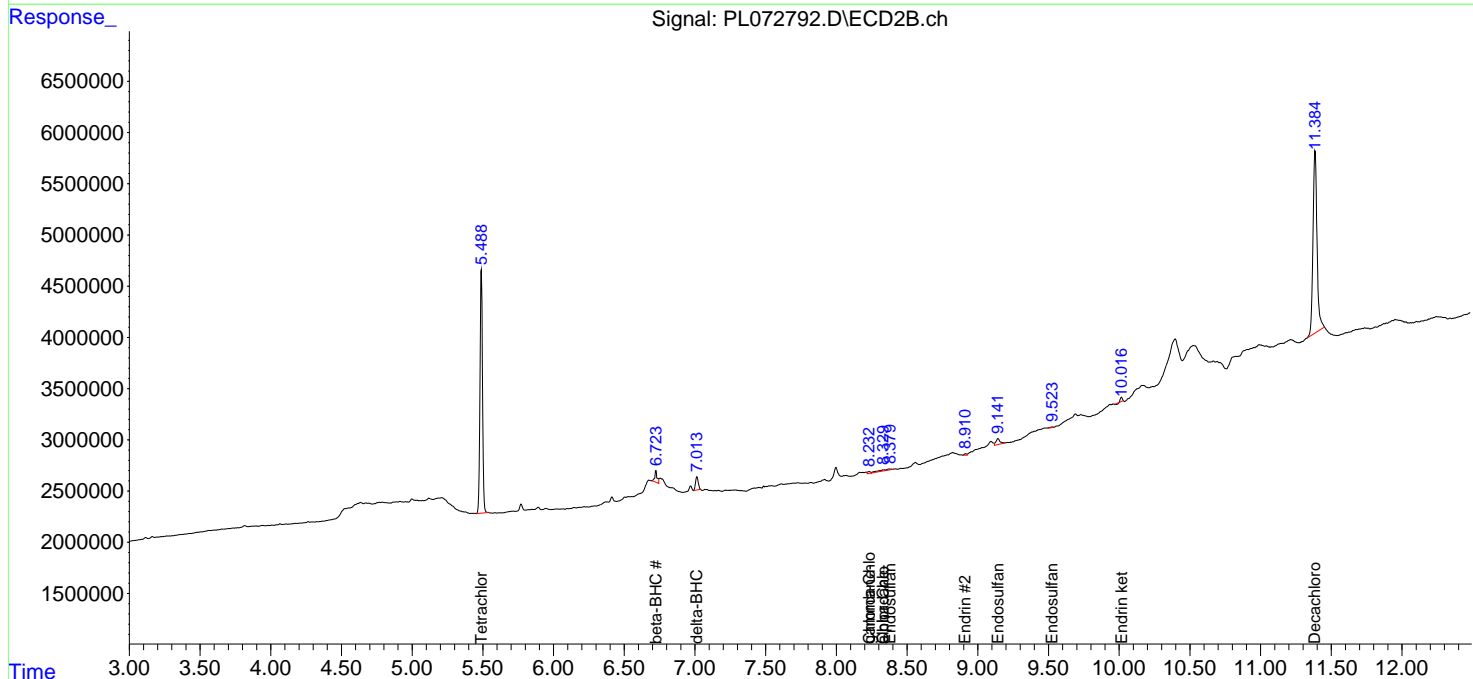
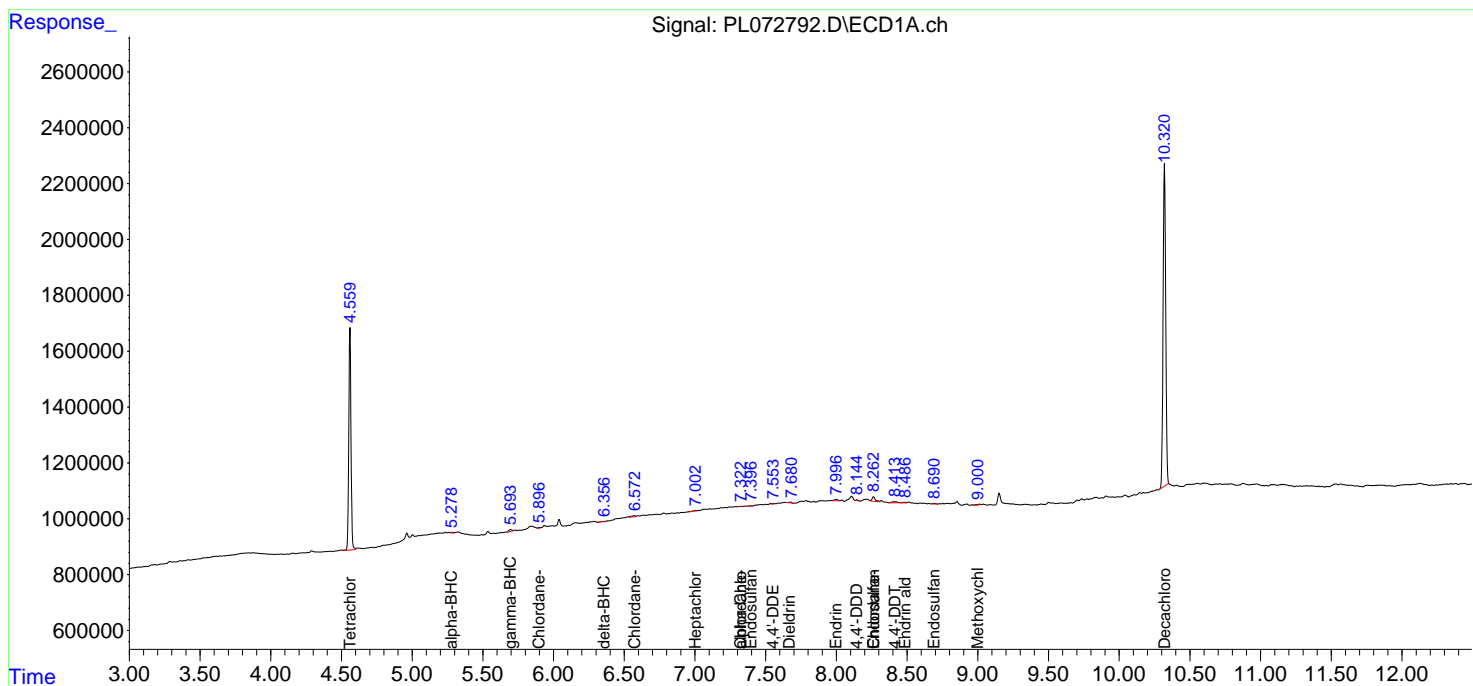
(f)=RT Delta > 1/2 Window (#)=Amounts differ by > 25% (m)=manual int.

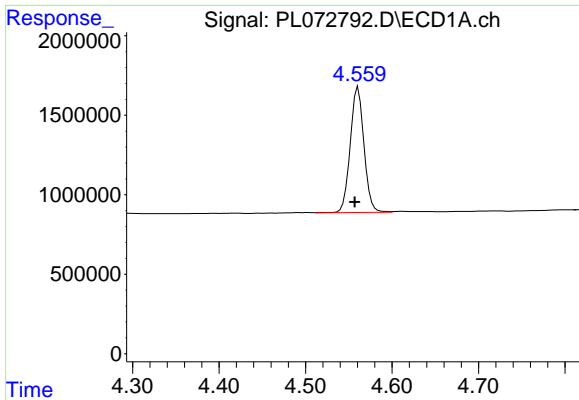
Data Path : Z:\pestpcbsrv\HPCHEM1\ECD\_L\Data\PL021822\  
 Data File : PL072792.D  
 Signal(s) : Signal #1: ECD1A.ch Signal #2: ECD2B.ch  
 Acq On : 18 Feb 2022 12:19  
 Operator : AR\AJ  
 Sample : PB142645BL  
 Misc :  
 ALS Vial : 7 Sample Multiplier: 1

Instrument :  
 ECD\_L  
 ClientSampleId :

Integration File signal 1: autoint1.e  
 Integration File signal 2: autoint2.e  
 Quant Time: Feb 20 21:31:18 2022  
 Quant Method : Z:\pestpcbsrv\HPCHEM1\ECD\_L\methods\PL020722.M  
 Quant Title : GC Extractables  
 QLast Update : Tue Feb 08 05:14:10 2022  
 Response via : Initial Calibration  
 Integrator: ChemStation

Volume Inj. : 1 µl  
 Signal #1 Phase : ZB-MR2 Signal #2 Phase: ZB-MR1  
 Signal #1 Info : 30M x 0.32mm x0.2 Signal #2 Info : 30M x 0.32mm x0.5µm

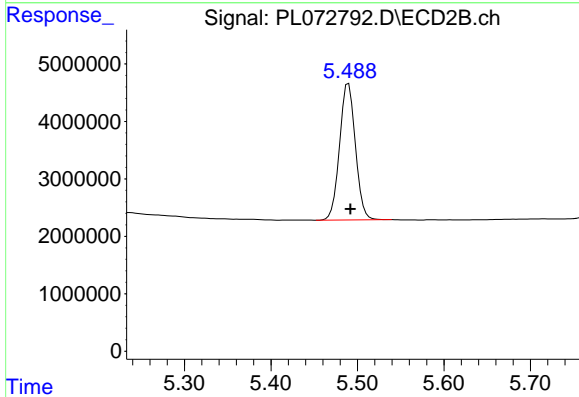




#1 Tetrachloro-m-xylene

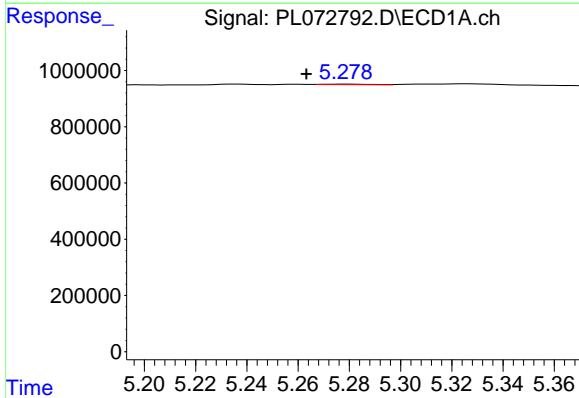
R.T.: 4.561 min  
 Delta R.T.: 0.004 min  
 Response: 8689020  
 Conc: 18.05 ng/ml

Instrument :  
 ECD\_L  
 ClientSampleId :



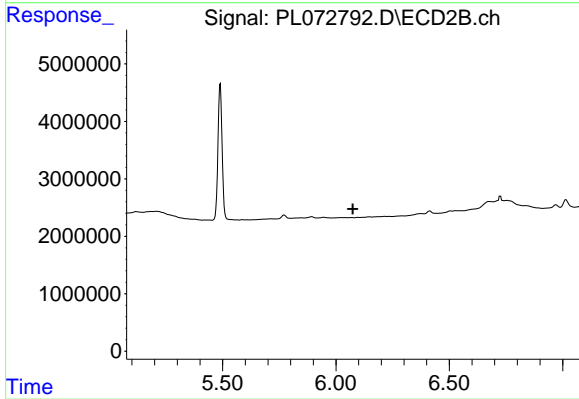
#1 Tetrachloro-m-xylene

R.T.: 5.490 min  
 Delta R.T.: -0.002 min  
 Response: 30043274  
 Conc: 17.39 ng/ml



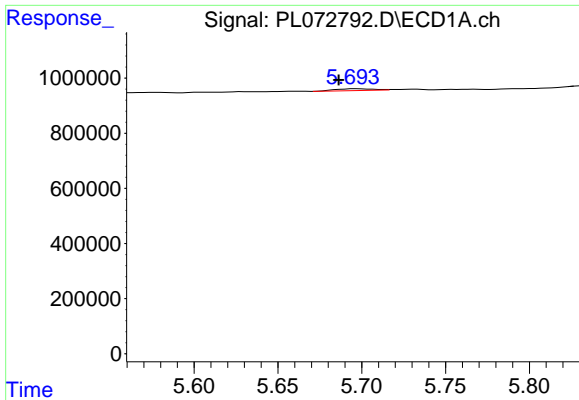
#2 alpha-BHC

R.T.: 5.279 min  
 Delta R.T.: 0.016 min  
 Response: 26582  
 Conc: 0.04 ng/ml



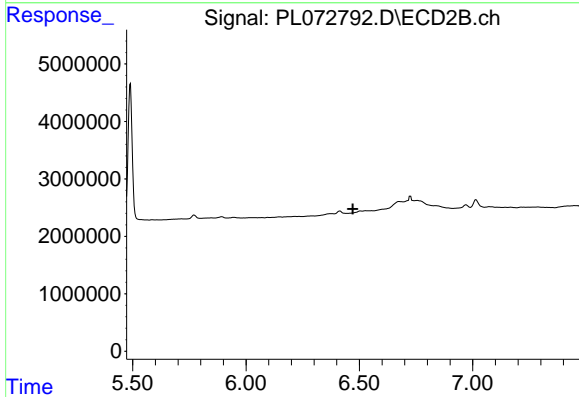
#2 alpha-BHC

R.T.: 0.000 min  
 Exp R.T. : 6.075 min  
 Response: 0  
 Conc: N.D.

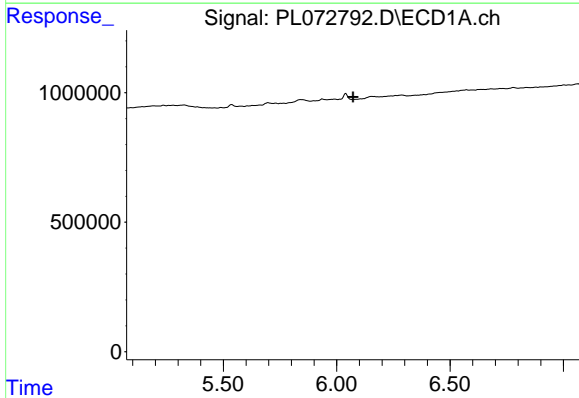


#3 gamma-BHC (Lindane)  
 R.T.: 5.697 min  
 Delta R.T.: 0.011 min  
 Response: 107261  
 Conc: 0.17 ng/ml

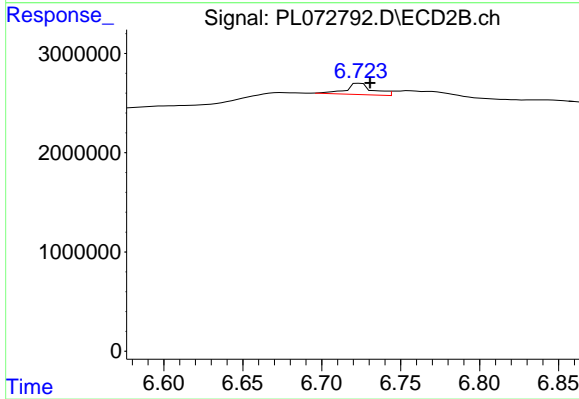
Instrument :  
 ECD\_L  
 ClientSampleId :



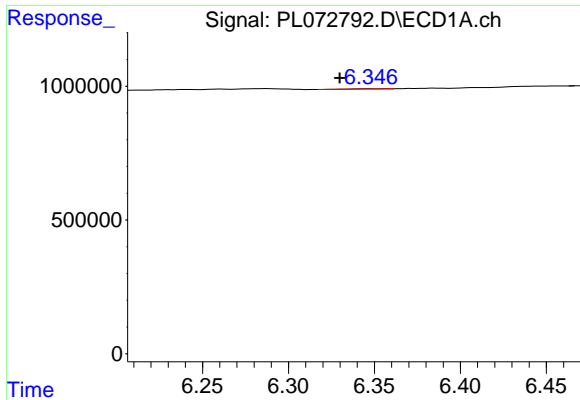
#3 gamma-BHC (Lindane)  
 R.T.: 0.000 min  
 Exp R.T. : 6.471 min  
 Response: 0  
 Conc: N.D.



#6 beta-BHC  
 R.T.: 0.000 min  
 Exp R.T. : 6.073 min  
 Response: 0  
 Conc: N.D.



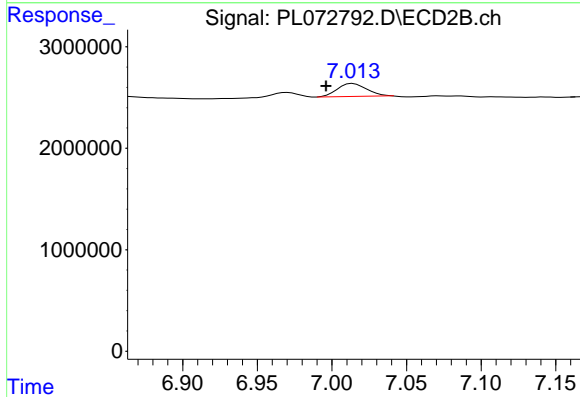
#6 beta-BHC  
 R.T.: 6.725 min  
 Delta R.T.: -0.006 min  
 Response: 1345353  
 Conc: 1.32 ng/ml



#7 delta-BHC

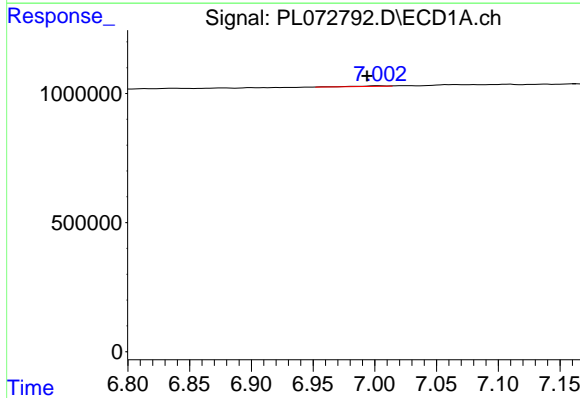
R.T.: 6.348 min  
 Delta R.T.: 0.018 min  
 Response: 12728  
 Conc: 0.02 ng/ml

Instrument :  
 ECD\_L  
 ClientSampleId :



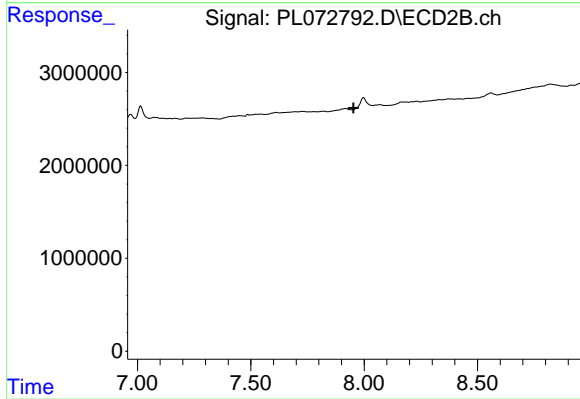
#7 delta-BHC

R.T.: 7.014 min  
 Delta R.T.: 0.018 min  
 Response: 1739857  
 Conc: 0.76 ng/ml



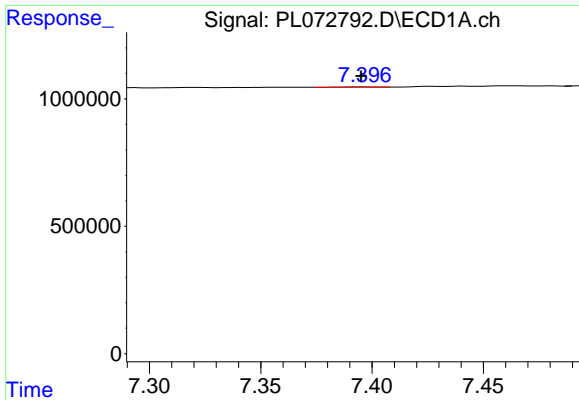
#8 Heptachlor epoxide

R.T.: 7.004 min  
 Delta R.T.: 0.010 min  
 Response: 39097  
 Conc: 0.06 ng/ml



#8 Heptachlor epoxide

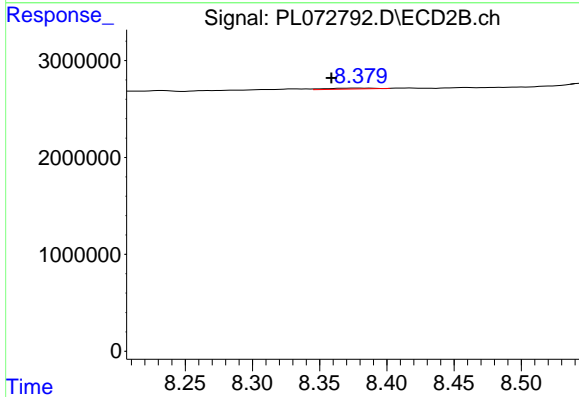
R.T.: 0.000 min  
 Exp R.T. : 7.954 min  
 Response: 0  
 Conc: N.D.



#9 Endosulfan I

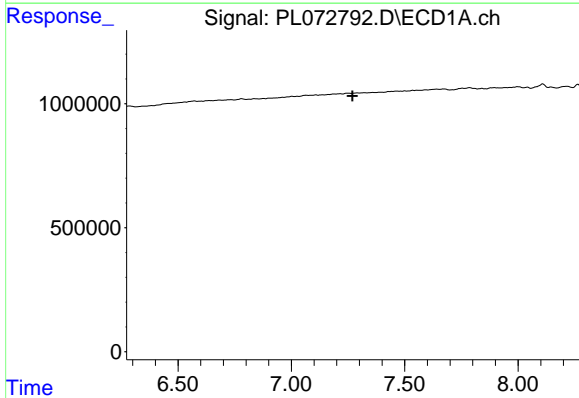
R.T.: 7.397 min  
 Delta R.T.: 0.001 min  
 Response: 11965  
 Conc: 0.02 ng/ml

Instrument :  
 ECD\_L  
 ClientSampleId :



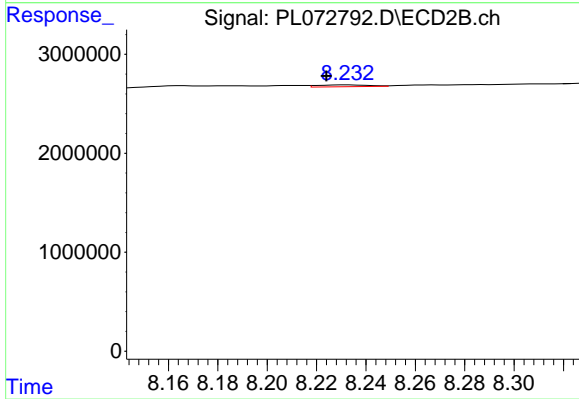
#9 Endosulfan I

R.T.: 8.379 min  
 Delta R.T.: 0.020 min  
 Response: 319339  
 Conc: 0.18 ng/ml



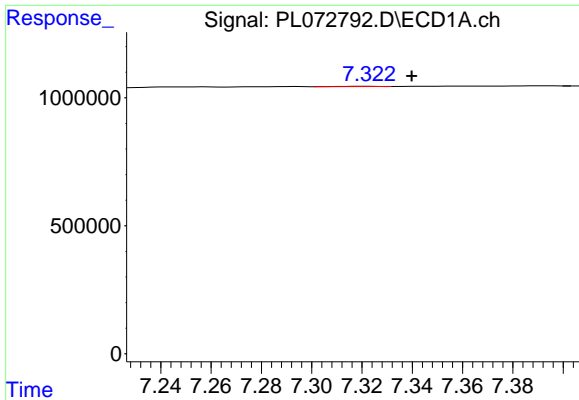
#10 gamma-Chlordane

R.T.: 7.294 min  
 Delta R.T.: 0.023 min  
 Response: -1702  
 Conc: N.D.



#10 gamma-Chlordane

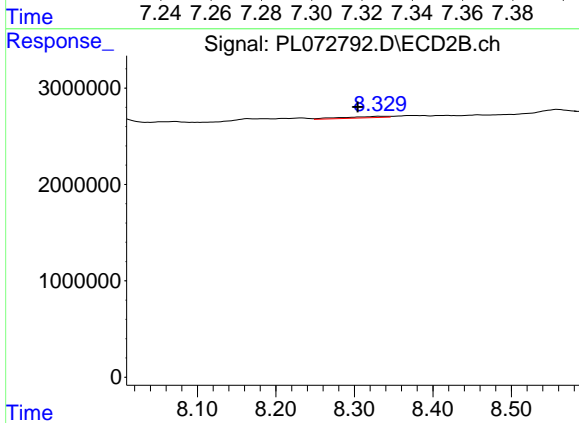
R.T.: 8.233 min  
 Delta R.T.: 0.009 min  
 Response: 274228  
 Conc: 0.14 ng/ml



#11 alpha-Chlordane

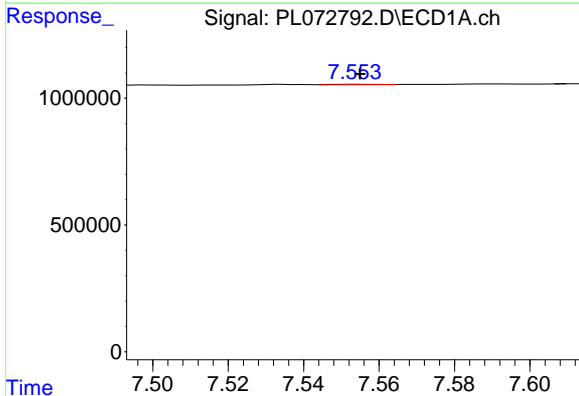
R.T.: 7.321 min  
 Delta R.T.: -0.019 min  
 Response: 9763  
 Conc: 0.02 ng/ml

Instrument :  
 ECD\_L  
 ClientSampleId :



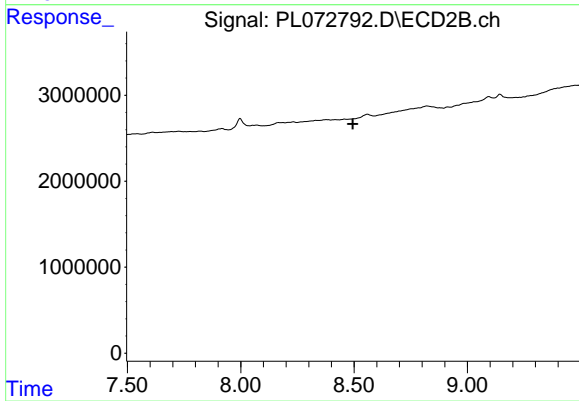
#11 alpha-Chlordane

R.T.: 8.331 min  
 Delta R.T.: 0.027 min  
 Response: 536519  
 Conc: 0.28 ng/ml



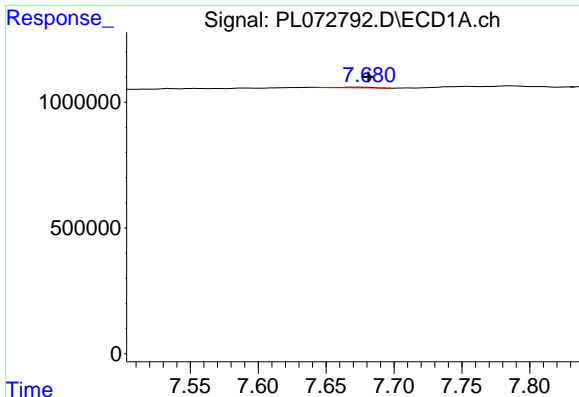
#12 4,4'-DDE

R.T.: 7.554 min  
 Delta R.T.: -0.001 min  
 Response: 12939  
 Conc: 0.02 ng/ml



#12 4,4'-DDE

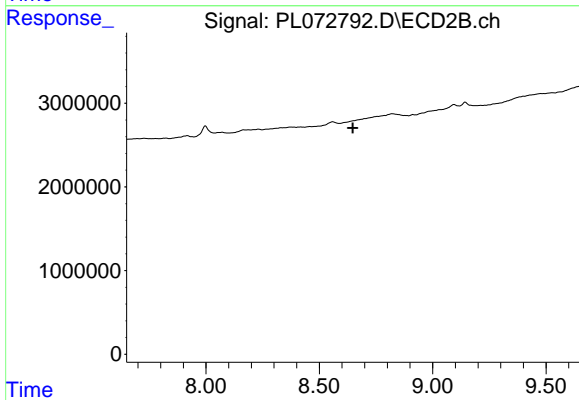
R.T.: 0.000 min  
 Exp R.T. : 8.494 min  
 Response: 0  
 Conc: N.D.



#13 Dieldrin

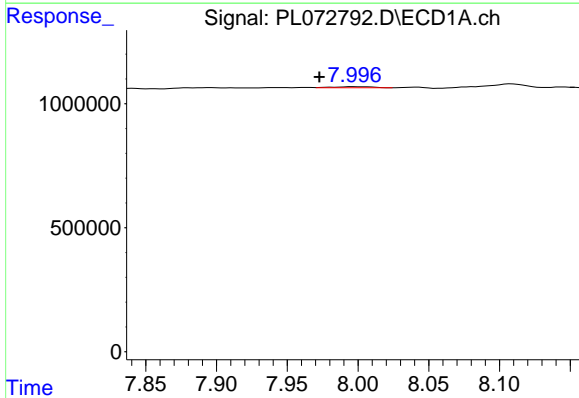
R.T.: 7.669 min  
 Delta R.T.: -0.013 min  
 Response: 34345  
 Conc: 0.05 ng/ml

Instrument :  
 ECD\_L  
 ClientSampleId :



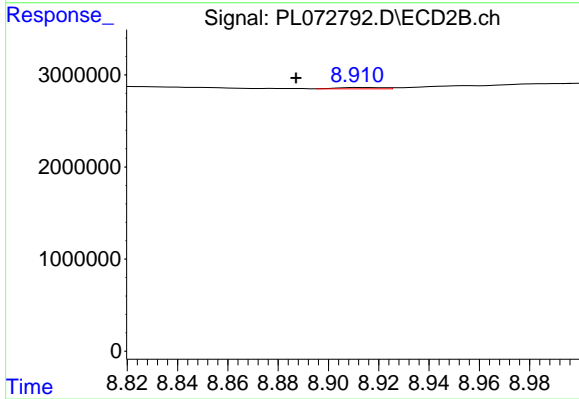
#13 Dieldrin

R.T.: 0.000 min  
 Exp R.T. : 8.648 min  
 Response: 0  
 Conc: N.D.



#14 Endrin

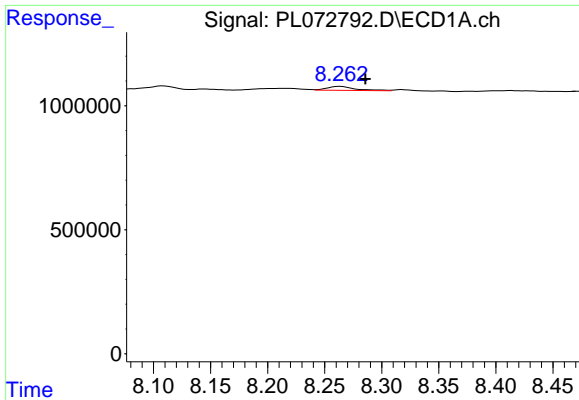
R.T.: 7.997 min  
 Delta R.T.: 0.024 min  
 Response: 77433  
 Conc: 0.13 ng/ml



#14 Endrin

R.T.: 8.912 min  
 Delta R.T.: 0.025 min  
 Response: 175805  
 Conc: 0.11 ng/ml

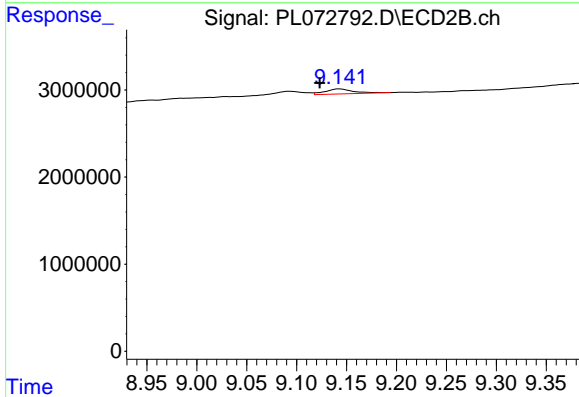




#15 Endosulfan II

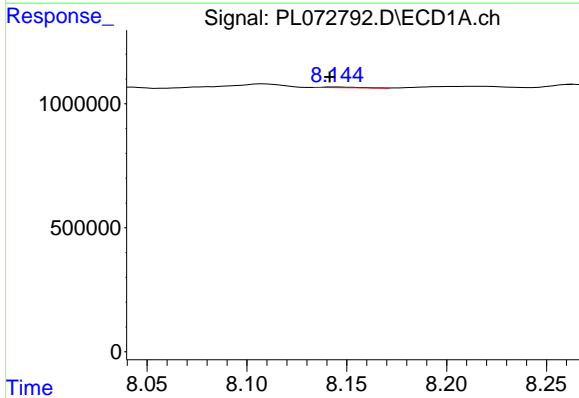
R.T.: 8.264 min  
 Delta R.T.: -0.022 min  
 Response: 267980  
 Conc: 0.44 ng/ml

Instrument :  
 ECD\_L  
 ClientSampleId :



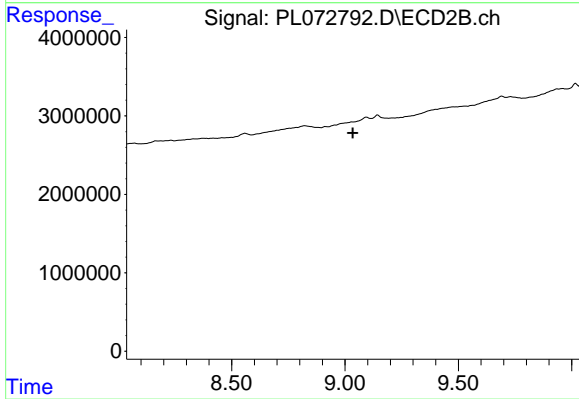
#15 Endosulfan II

R.T.: 9.143 min  
 Delta R.T.: 0.020 min  
 Response: 1132246  
 Conc: 0.67 ng/ml



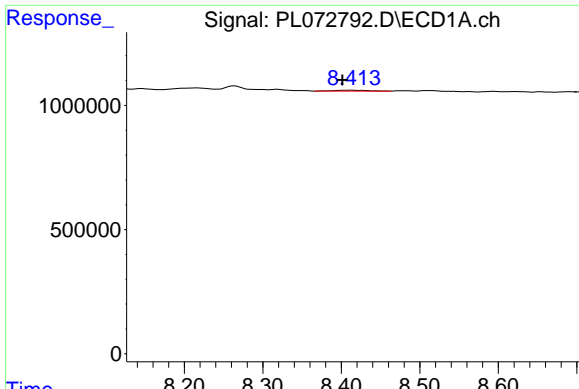
#16 4,4'-DDD

R.T.: 8.145 min  
 Delta R.T.: 0.004 min  
 Response: 29469  
 Conc: 0.06 ng/ml



#16 4,4'-DDD

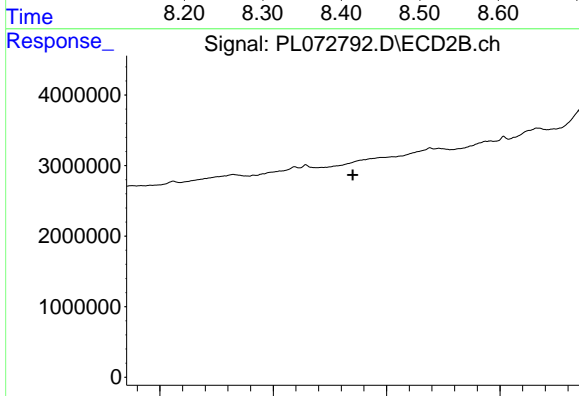
R.T.: 0.000 min  
 Exp R.T. : 9.035 min  
 Response: 0  
 Conc: N.D.



#17 4,4'-DDT

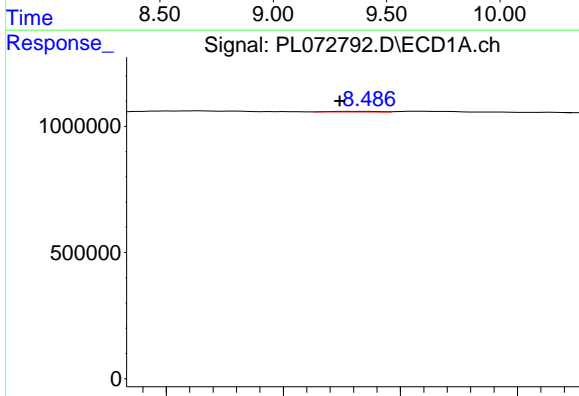
R.T.: 8.414 min  
 Delta R.T.: 0.012 min  
 Response: 121136  
 Conc: 0.23 ng/ml

Instrument :  
 ECD\_L  
 ClientSampleId :



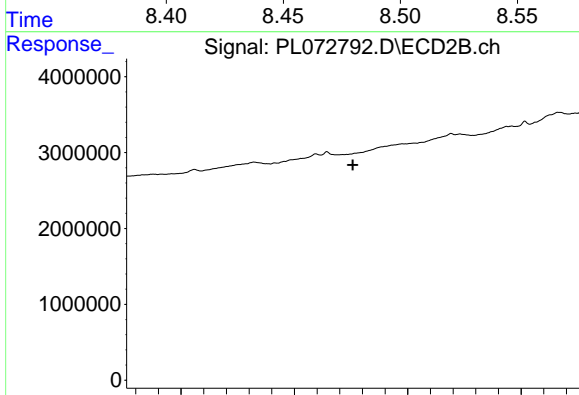
#17 4,4'-DDT

R.T.: 0.000 min  
 Exp R.T. : 9.352 min  
 Response: 0  
 Conc: N.D.



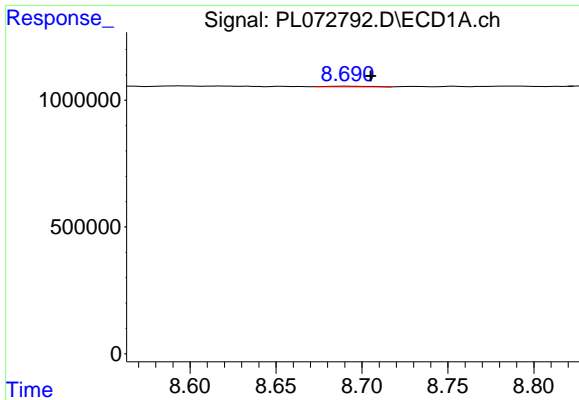
#18 Endrin aldehyde

R.T.: 8.486 min  
 Delta R.T.: 0.012 min  
 Response: 32787  
 Conc: 0.08 ng/ml



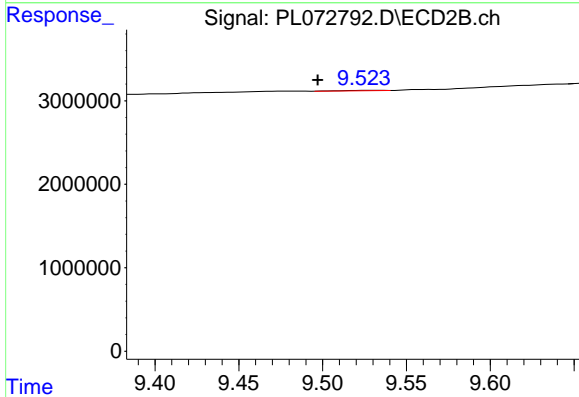
#18 Endrin aldehyde

R.T.: 0.000 min  
 Exp R.T. : 9.258 min  
 Response: 0  
 Conc: N.D.

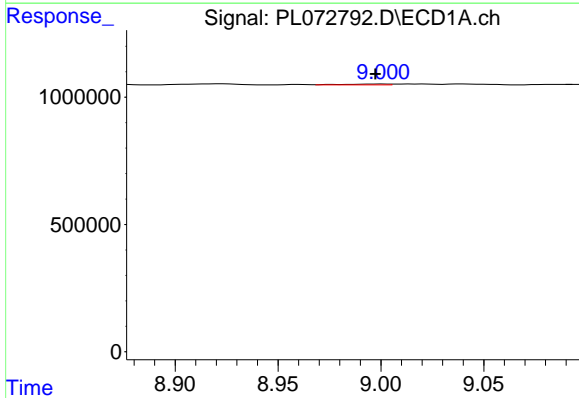


#19 Endosulfan Sulfate  
 R.T.: 8.692 min  
 Delta R.T.: -0.013 min  
 Response: 38259  
 Conc: 0.06 ng/ml

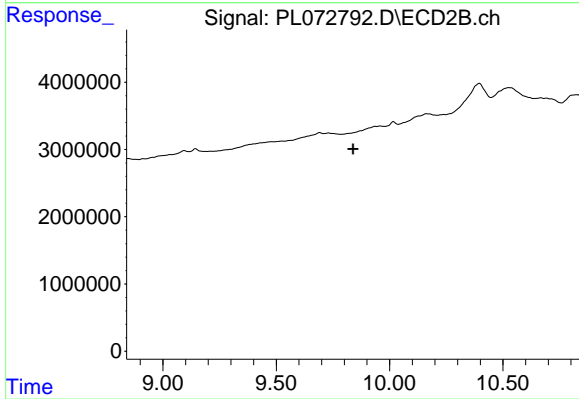
Instrument :  
 ECD\_L  
 ClientSampleId :



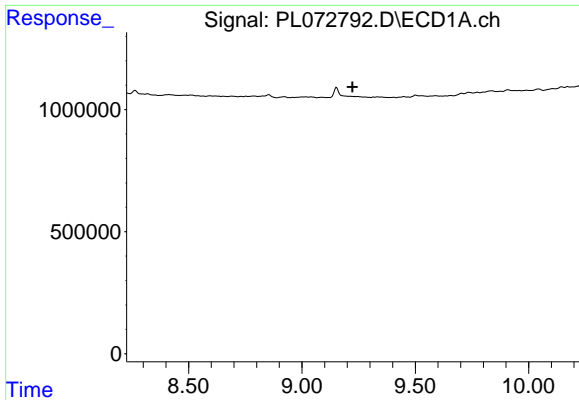
#19 Endosulfan Sulfate  
 R.T.: 9.525 min  
 Delta R.T.: 0.028 min  
 Response: 106214  
 Conc: 0.07 ng/ml



#20 Methoxychlor  
 R.T.: 9.001 min  
 Delta R.T.: 0.004 min  
 Response: 46478  
 Conc: 0.13 ng/ml



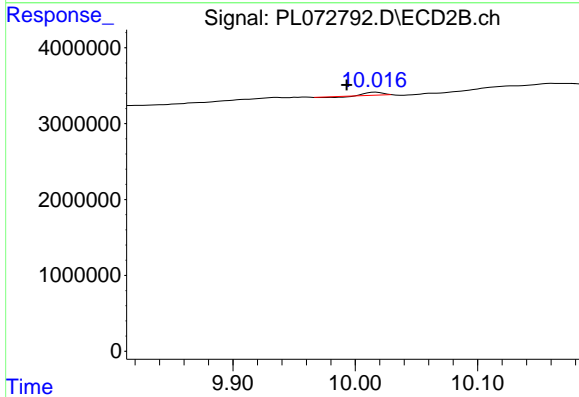
#20 Methoxychlor  
 R.T.: 0.000 min  
 Exp R.T. : 9.839 min  
 Response: 0  
 Conc: N.D.



#21 Endrin ketone

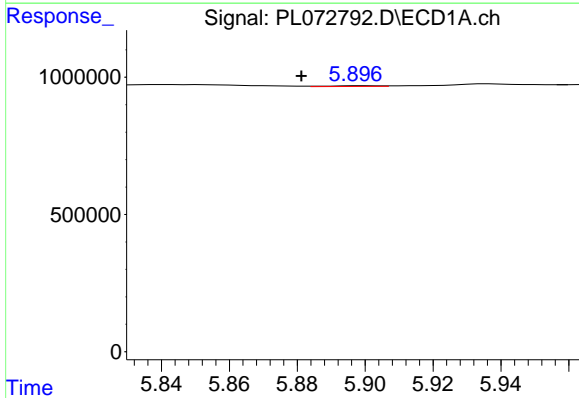
R.T.: 0.000 min  
 Exp R.T. : 9.223 min  
 Response: 0  
 Conc: N.D.

Instrument :  
 ECD\_L  
 ClientSampleId :



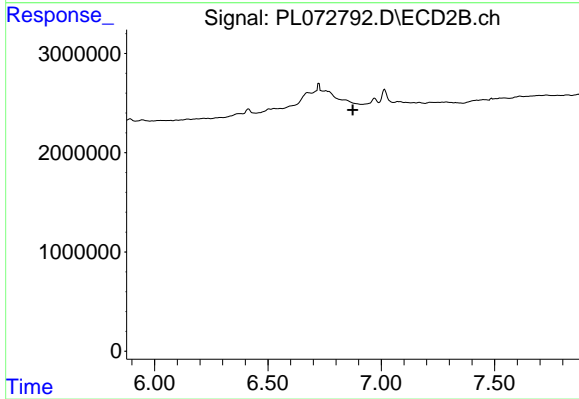
#21 Endrin ketone

R.T.: 10.017 min  
 Delta R.T.: 0.024 min  
 Response: 298758  
 Conc: 0.19 ng/ml



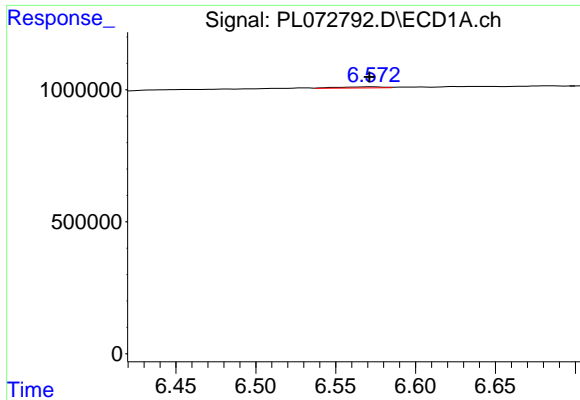
#23 Chlordane-1

R.T.: 5.899 min  
 Delta R.T.: 0.018 min  
 Response: 28590  
 Conc: 1.54 ng/ml



#23 Chlordane-1

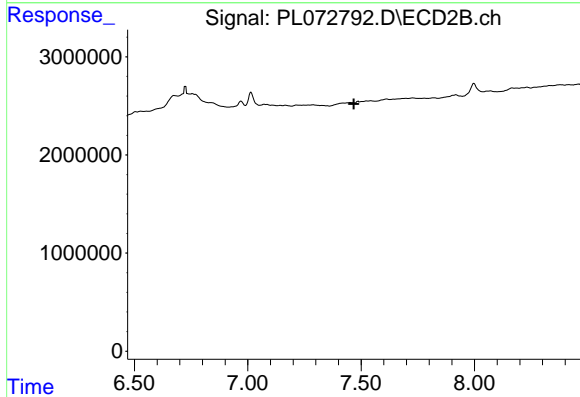
R.T.: 0.000 min  
 Exp R.T. : 6.874 min  
 Response: 0  
 Conc: N.D.



#24 Chlordane-2

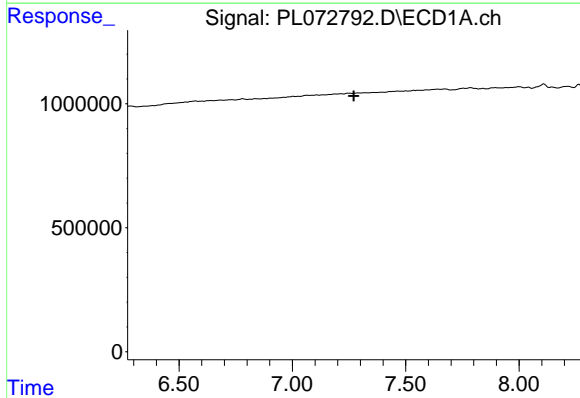
R.T.: 6.573 min  
 Delta R.T.: 0.002 min  
 Response: 81166  
 Conc: 3.21 ng/ml

Instrument :  
 ECD\_L  
 ClientSampleId :



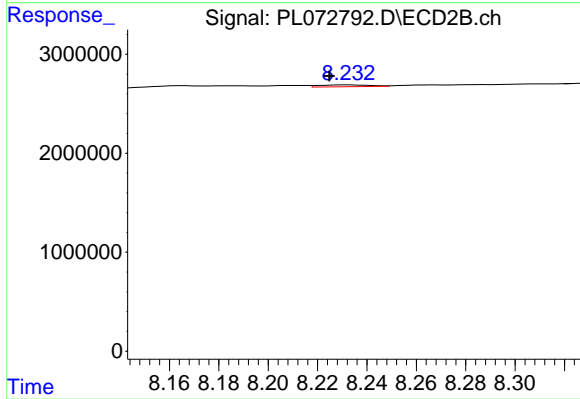
#24 Chlordane-2

R.T.: 7.487 min  
 Delta R.T.: 0.019 min  
 Response: -7721  
 Conc: N.D.



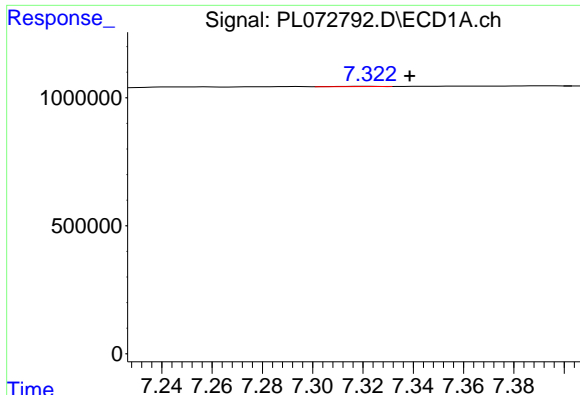
#25 Chlordane-3

R.T.: 7.294 min  
 Delta R.T.: 0.023 min  
 Response: -1702  
 Conc: N.D.



#25 Chlordane-3

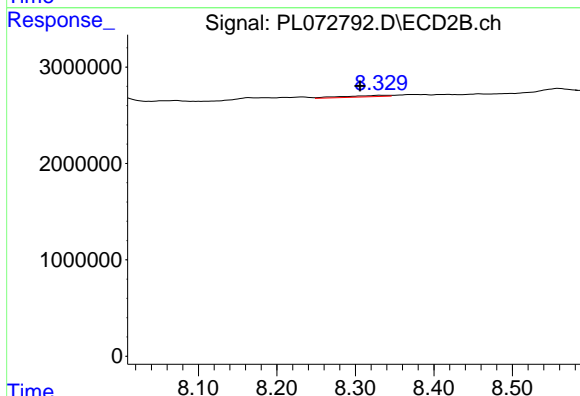
R.T.: 8.233 min  
 Delta R.T.: 0.008 min  
 Response: 274228  
 Conc: 0.92 ng/ml



#26 Chlordane-4

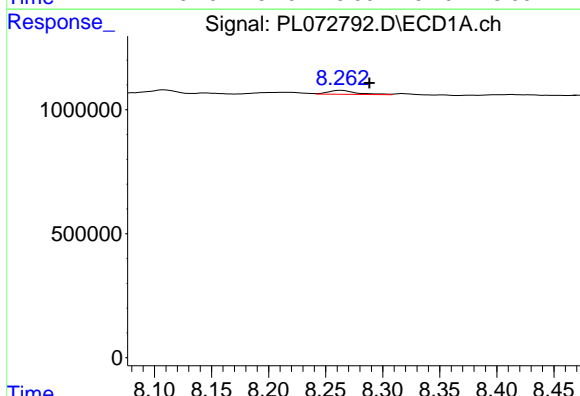
R.T.: 7.321 min  
 Delta R.T.: -0.018 min  
 Response: 9763  
 Conc: 0.13 ng/ml

Instrument :  
 ECD\_L  
 ClientSampleId :



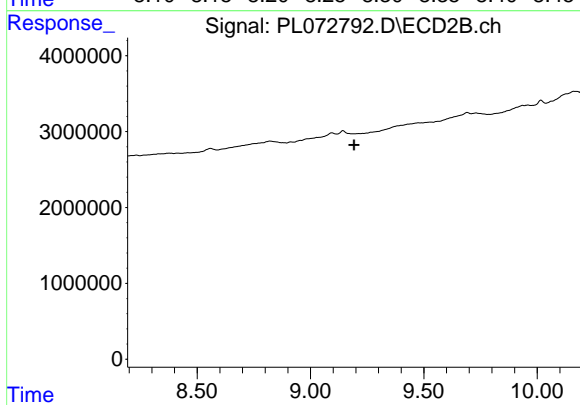
#26 Chlordane-4

R.T.: 8.331 min  
 Delta R.T.: 0.025 min  
 Response: 536519  
 Conc: 1.50 ng/ml



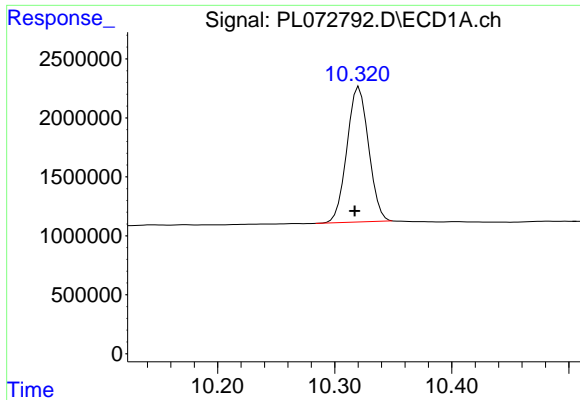
#27 Chlordane-5

R.T.: 8.264 min  
 Delta R.T.: -0.025 min  
 Response: 267980  
 Conc: 10.45 ng/ml



#27 Chlordane-5

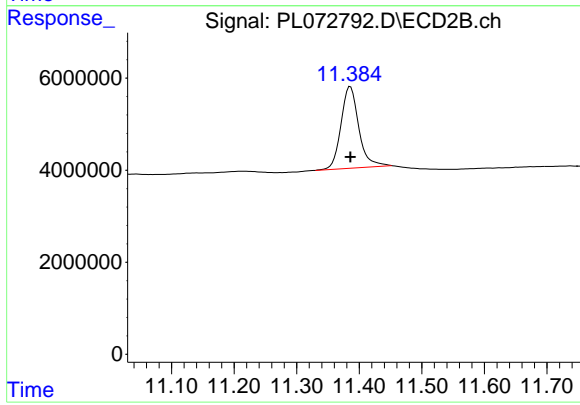
R.T.: 0.000 min  
 Exp R.T. : 9.193 min  
 Response: 0  
 Conc: N.D.



#28 Decachlorobiphenyl

R.T.: 10.321 min  
Delta R.T.: 0.004 min  
Response: 14793546  
Conc: 19.54 ng/ml

Instrument :  
ECD\_L  
ClientSampleId :



#28 Decachlorobiphenyl

R.T.: 11.386 min  
Delta R.T.: 0.000 min  
Response: 35296685  
Conc: 22.26 ng/ml