

Data Path : Z:\pestpcbsrv\HPCHEM1\ECD_L\Data\PL021920\
 Data File : PL056666.D
 Signal(s) : Signal #1: ECD1A.ch Signal #2: ECD2B.ch
 Acq On : 19 Feb 2020 18:11
 Operator : AJ\MA
 Sample : PSTDICV050
 Misc :
 ALS Vial : 12 Sample Multiplier: 1

Instrument :
 ECD_L
 ClientSampleId :

Integration File signal 1: autoint1.e
 Integration File signal 2: autoint2.e
 Quant Time: Feb 19 18:24:58 2020
 Quant Method : Z:\pestpcbsrv\HPCHEM1\ECD_L\methods\PL021920.M
 Quant Title : GC Extractables
 QLast Update : Wed Feb 19 18:03:26 2020
 Response via : Initial Calibration
 Integrator: ChemStation

Volume Inj. : 1 µl
 Signal #1 Phase : ZB-MR2 Signal #2 Phase: ZB-MR1
 Signal #1 Info : 30M x 0.32mm x0.2 Signal #2 Info : 30M x 0.32mm x0.5µm

	Compound	RT#1	RT#2	Resp#1	Resp#2	ng/ml	ng/ml

System Monitoring Compounds							
1)	SA Tetrachlo...	3.496	4.019	454.4E6	128.6E6	52.541	51.632
28)	SA Decachlor...	8.248	9.090	573.3E6	105.5E6	48.192	50.209
Target Compounds							
2)	A alpha-BHC	3.934	4.408	820.0E6	199.6E6	51.949	53.058
3)	MA gamma-BHC...	4.218	4.693	779.0E6	180.0E6	52.217	52.269
4)	MA Heptachlor	4.519	5.200	760.6E6	150.3E6	51.585	51.389
5)	MB Aldrin	4.767	5.505	770.1E6	159.2E6	51.580	50.854
6)	B beta-BHC	4.468	4.866	299.9E6	70479701	51.742	53.909
7)	B delta-BHC	4.673	5.083	761.8E6	162.2E6	52.857	53.272
8)	Heptachlo...	5.210	5.893	724.4E6	147.8E6	51.205	50.546
9)	A Endosulfan I	5.550	6.250	689.3E6	136.9E6	51.564	50.672
10)	B gamma-Chl...	5.437	6.127	747.8E6	144.9E6	51.478	50.519
11)	B alpha-Chl...	5.495	6.199	732.7E6	143.9E6	50.739	50.586
12)	B 4,4'-DDE	5.659	6.358	692.6E6	141.4E6	49.236	51.346
13)	MA Dieldrin	5.792	6.507	756.9E6	145.8E6	50.784	50.989
14)	MA Endrin	6.050	6.725	683.9E6	125.4E6	50.671	50.920
15)	B Endosulfa...	6.323	6.936	657.6E6	126.8E6	52.946	49.082
16)	A 4,4'-DDD	6.175	6.850	564.7E6	114.3E6	50.484	49.648
17)	MA 4,4'-DDT	6.415	7.147	567.1E6	106.9E6	52.075	51.362
18)	B Endrin al...	6.491	7.060	544.7E6	104.9E6	50.321	50.010
19)	B Endosulfa...	6.704	7.283	616.1E6	118.6E6	51.964	49.888
20)	A Methoxychlor	6.959	7.607	280.2E6	57020538	52.845	51.522
21)	B Endrin ke...	7.196	7.755	687.1E6	128.2E6	51.540	50.749
22)	Mirex	7.385	8.208	409.8E6	81503600	48.837	48.515
24)	Chlordane-2	0.000	5.505f	0	159.2E6	N.D.	1612.859 #
25)	Chlordane-3	5.437	6.127	747.8E6	144.9E6	594.470	392.342 #
26)	Chlordane-4	5.495	6.199	732.7E6	143.9E6	682.057	335.328 #
27)	Chlordane-5	6.323	0.000	657.6E6	0	2008.182	N.D. #

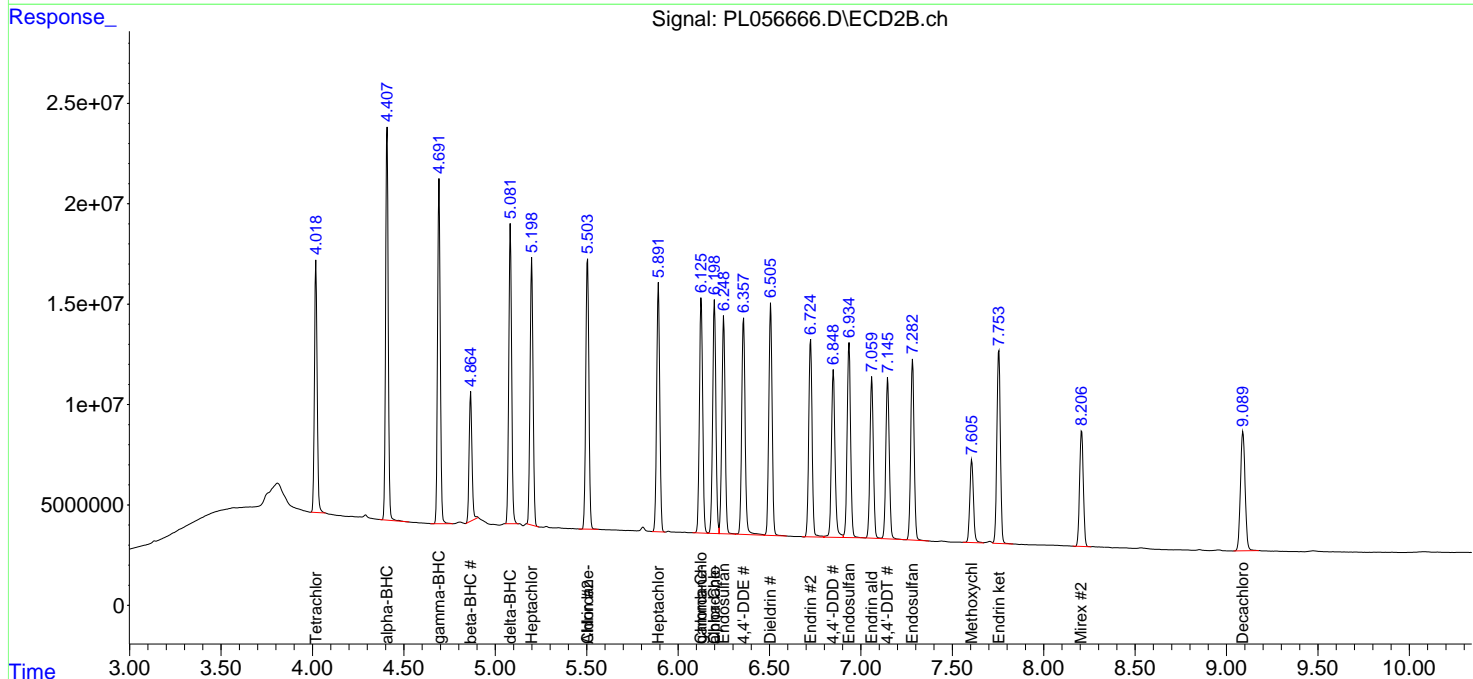
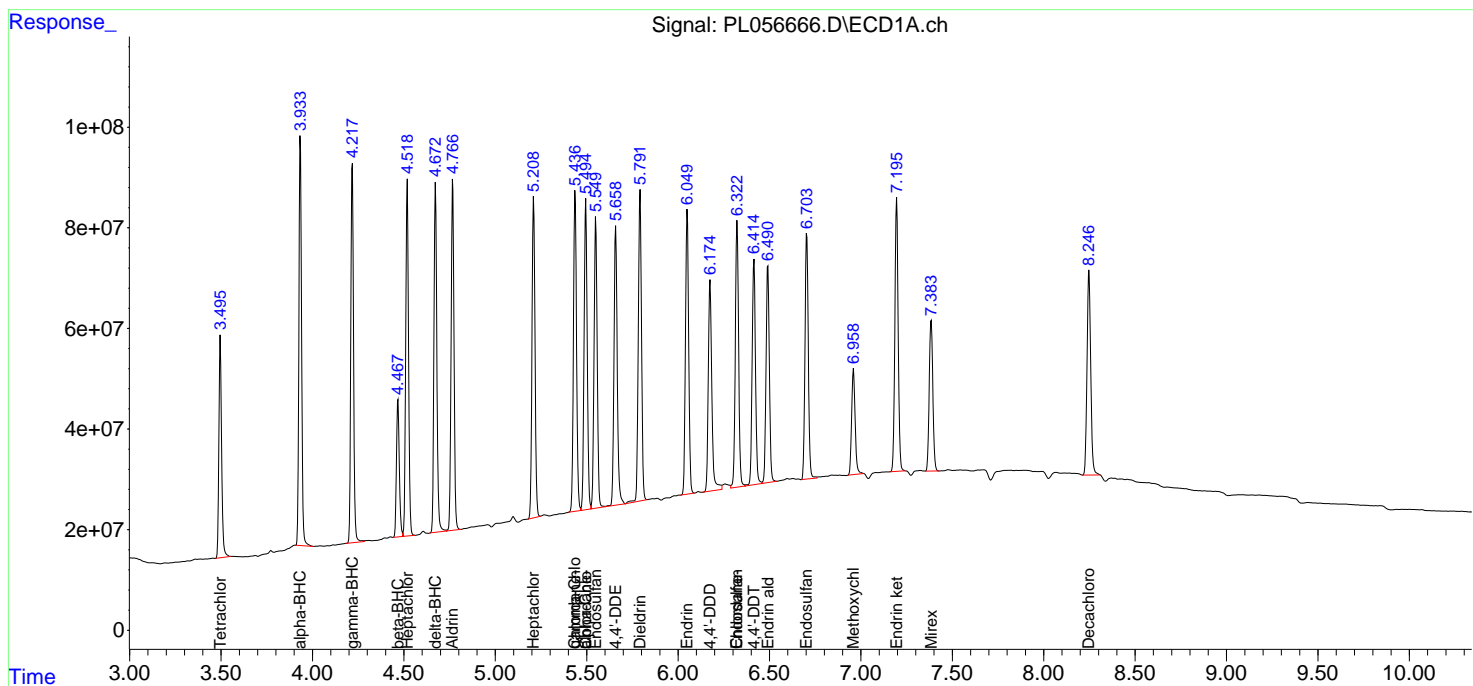
(f)=RT Delta > 1/2 Window (#)=Amounts differ by > 25% (m)=manual int.

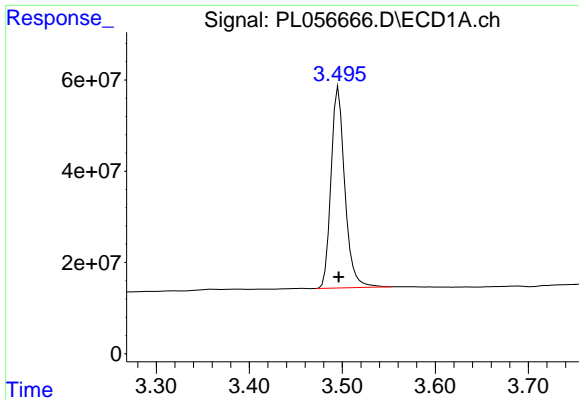
Data Path : Z:\pestpcbsrv\HPCHEM1\ECD_L\Data\PL021920\
 Data File : PL056666.D
 Signal(s) : Signal #1: ECD1A.ch Signal #2: ECD2B.ch
 Acq On : 19 Feb 2020 18:11
 Operator : AJ\MA
 Sample : PSTDICV050
 Misc :
 ALS Vial : 12 Sample Multiplier: 1

Instrument :
 ECD_L
 ClientSampled :

Integration File signal 1: autoint1.e
 Integration File signal 2: autoint2.e
 Quant Time: Feb 19 18:24:58 2020
 Quant Method : Z:\pestpcbsrv\HPCHEM1\ECD_L\methods\PL021920.M
 Quant Title : GC Extractables
 QLast Update : Wed Feb 19 18:03:26 2020
 Response via : Initial Calibration
 Integrator: ChemStation

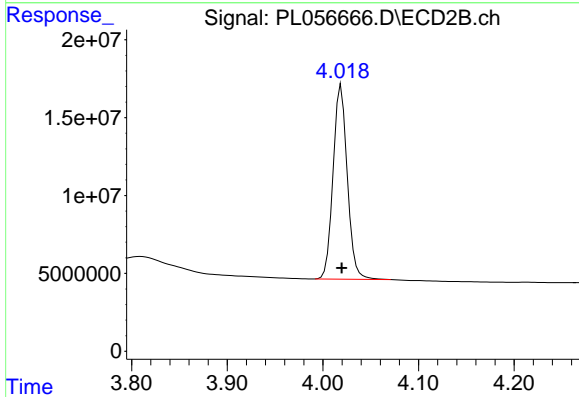
Volume Inj. : 1 µl
 Signal #1 Phase : ZB-MR2 Signal #2 Phase: ZB-MR1
 Signal #1 Info : 30M x 0.32mm x0.2 Signal #2 Info : 30M x 0.32mm x0.5µm



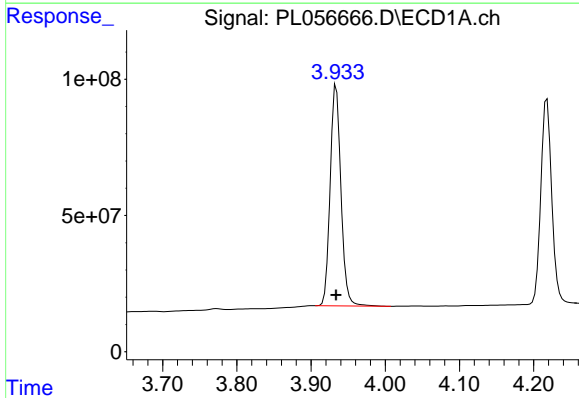


#1 Tetrachloro-m-xylene
 R.T.: 3.496 min
 Delta R.T.: 0.000 min
 Response: 454357564
 Conc: 52.54 ng/ml

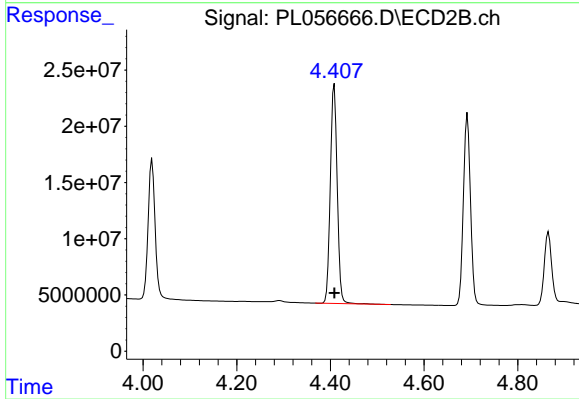
Instrument :
 ECD_L
 ClientSampled :



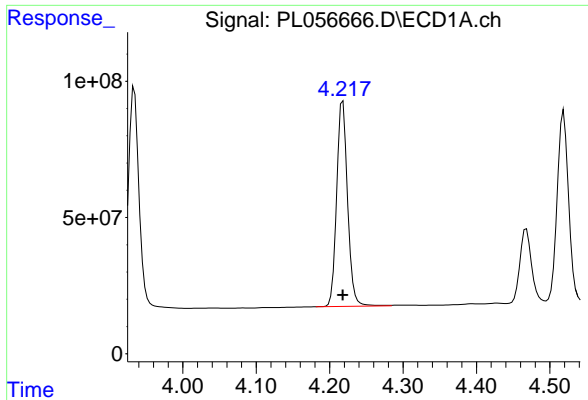
#1 Tetrachloro-m-xylene
 R.T.: 4.019 min
 Delta R.T.: 0.000 min
 Response: 128615665
 Conc: 51.63 ng/ml



#2 alpha-BHC
 R.T.: 3.934 min
 Delta R.T.: 0.000 min
 Response: 819964867
 Conc: 51.95 ng/ml



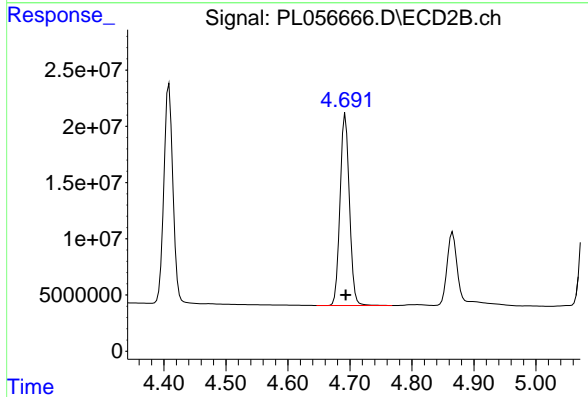
#2 alpha-BHC
 R.T.: 4.408 min
 Delta R.T.: 0.000 min
 Response: 199600999
 Conc: 53.06 ng/ml



#3 gamma-BHC (Lindane)

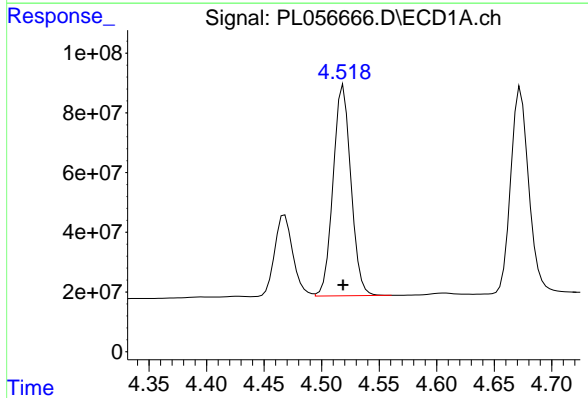
R.T.: 4.218 min
Delta R.T.: 0.000 min
Response: 778973063
Conc: 52.22 ng/ml

Instrument :
ECD_L
ClientSampled :



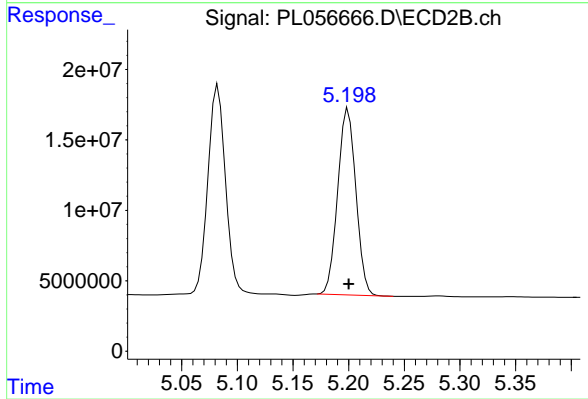
#3 gamma-BHC (Lindane)

R.T.: 4.693 min
Delta R.T.: 0.000 min
Response: 179994535
Conc: 52.27 ng/ml



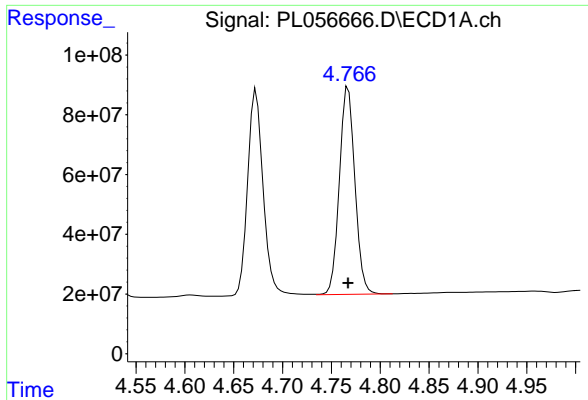
#4 Heptachlor

R.T.: 4.519 min
Delta R.T.: 0.000 min
Response: 760647777
Conc: 51.59 ng/ml



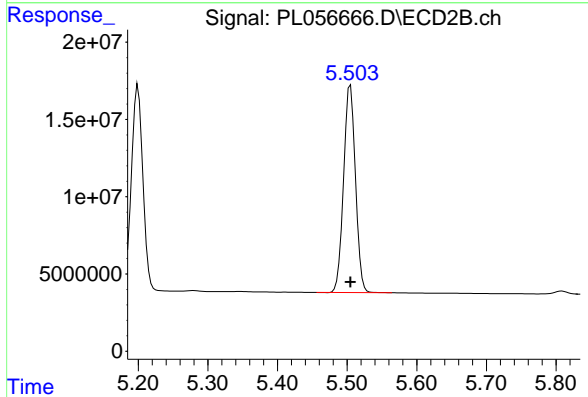
#4 Heptachlor

R.T.: 5.200 min
Delta R.T.: 0.000 min
Response: 150337796
Conc: 51.39 ng/ml

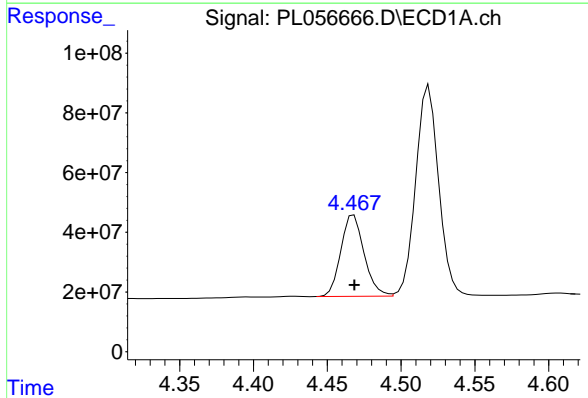


#5 Aldrin
 R.T.: 4.767 min
 Delta R.T.: 0.000 min
 Response: 77055512
 Conc: 51.58 ng/ml

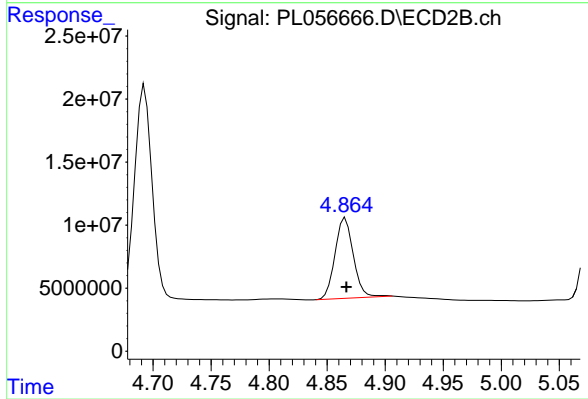
Instrument :
 ECD_L
 ClientSampled :



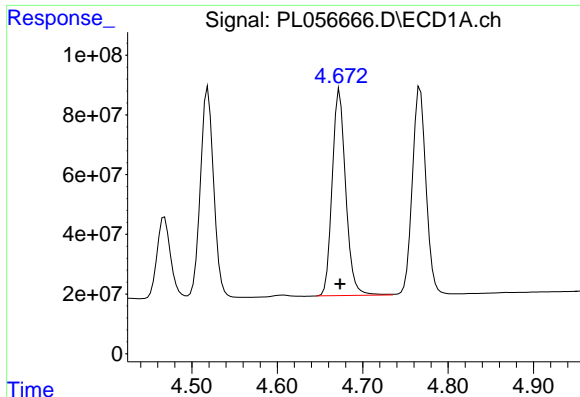
#5 Aldrin
 R.T.: 5.505 min
 Delta R.T.: 0.000 min
 Response: 159160594
 Conc: 50.85 ng/ml



#6 beta-BHC
 R.T.: 4.468 min
 Delta R.T.: 0.000 min
 Response: 299859585
 Conc: 51.74 ng/ml



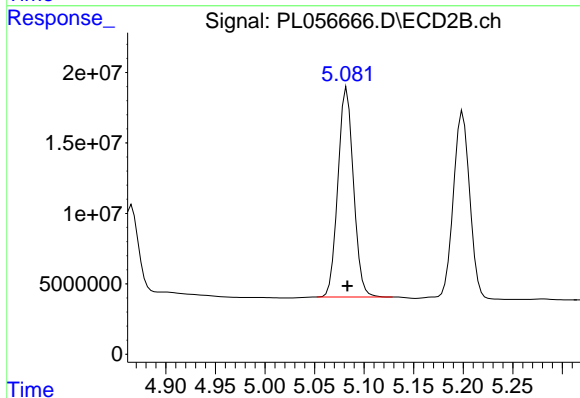
#6 beta-BHC
 R.T.: 4.866 min
 Delta R.T.: 0.000 min
 Response: 70479701
 Conc: 53.91 ng/ml



#7 delta-BHC

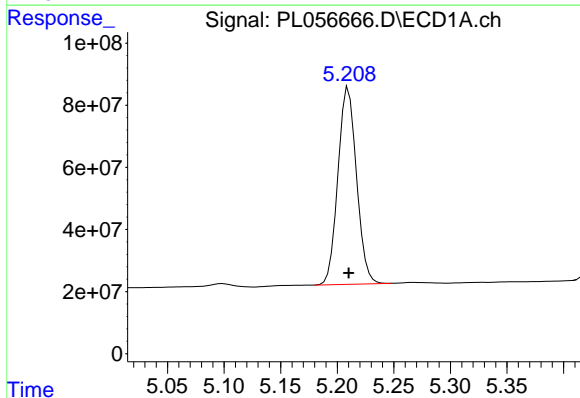
R.T.: 4.673 min
 Delta R.T.: 0.000 min
 Response: 761835099
 Conc: 52.86 ng/ml

Instrument :
 ECD_L
 ClientSampleId :



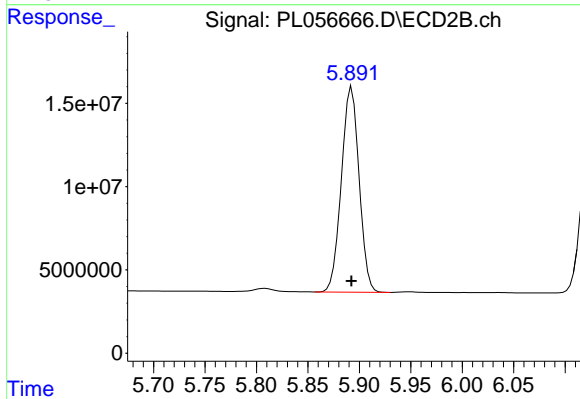
#7 delta-BHC

R.T.: 5.083 min
 Delta R.T.: 0.000 min
 Response: 162189413
 Conc: 53.27 ng/ml



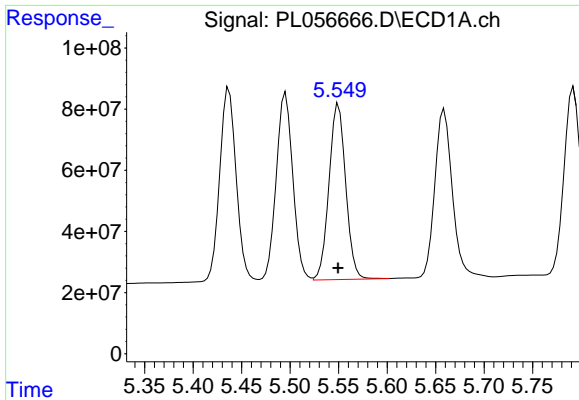
#8 Heptachlor epoxide

R.T.: 5.210 min
 Delta R.T.: 0.000 min
 Response: 724389549
 Conc: 51.20 ng/ml



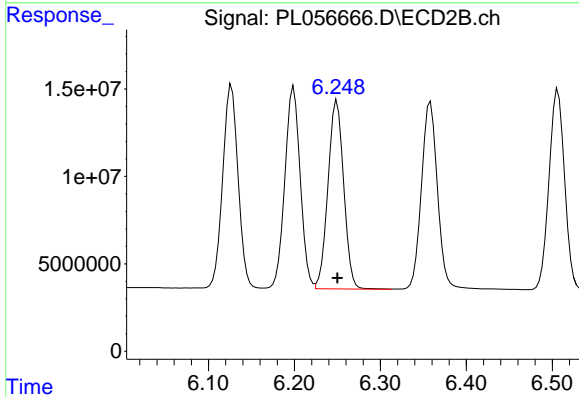
#8 Heptachlor epoxide

R.T.: 5.893 min
 Delta R.T.: 0.000 min
 Response: 147784744
 Conc: 50.55 ng/ml

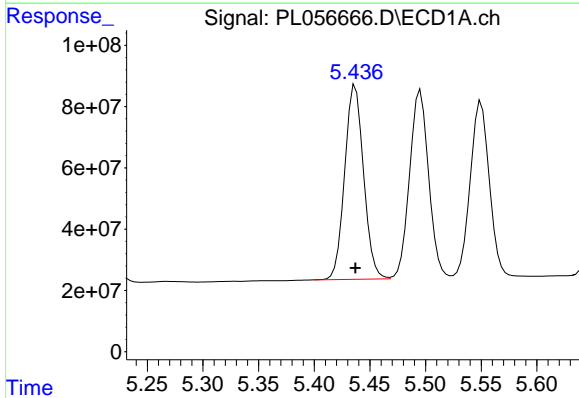


#9 Endosulfan I
 R.T.: 5.550 min
 Delta R.T.: 0.000 min
 Response: 689312281
 Conc: 51.56 ng/ml

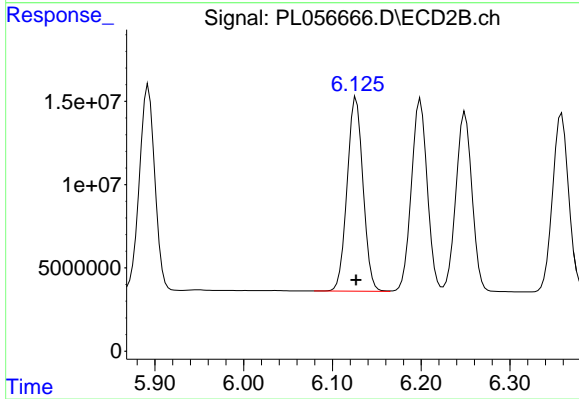
Instrument :
 ECD_L
 ClientSampled :



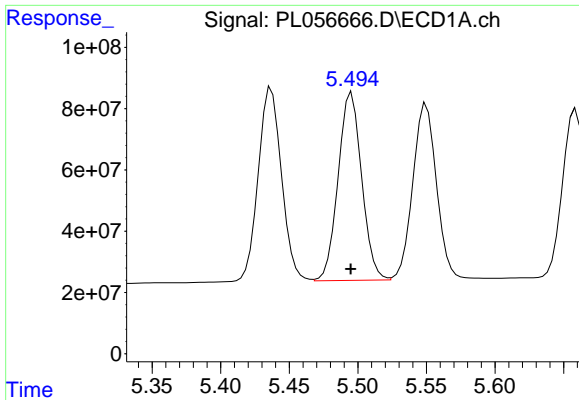
#9 Endosulfan I
 R.T.: 6.250 min
 Delta R.T.: 0.000 min
 Response: 136894897
 Conc: 50.67 ng/ml



#10 gamma-Chlordane
 R.T.: 5.437 min
 Delta R.T.: 0.000 min
 Response: 747762249
 Conc: 51.48 ng/ml



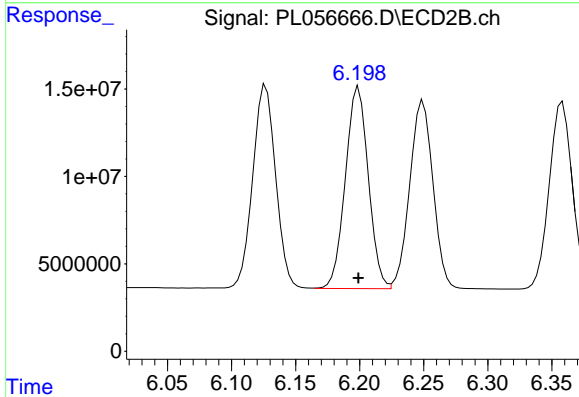
#10 gamma-Chlordane
 R.T.: 6.127 min
 Delta R.T.: 0.000 min
 Response: 144895255
 Conc: 50.52 ng/ml



#11 alpha-Chlordane

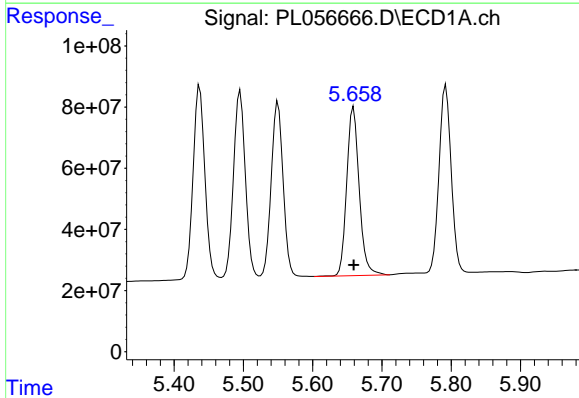
R.T.: 5.495 min
Delta R.T.: 0.000 min
Response: 732676046
Conc: 50.74 ng/ml

Instrument :
ECD_L
ClientSampled :



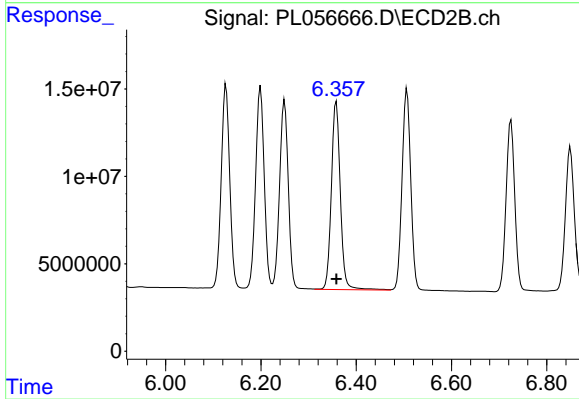
#11 alpha-Chlordane

R.T.: 6.199 min
Delta R.T.: 0.000 min
Response: 143938256
Conc: 50.59 ng/ml



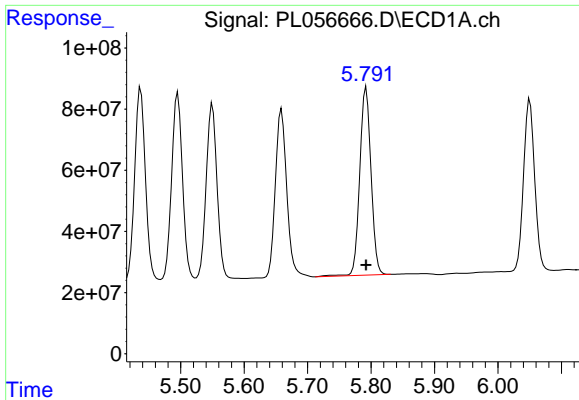
#12 4,4'-DDE

R.T.: 5.659 min
Delta R.T.: 0.000 min
Response: 692554422
Conc: 49.24 ng/ml



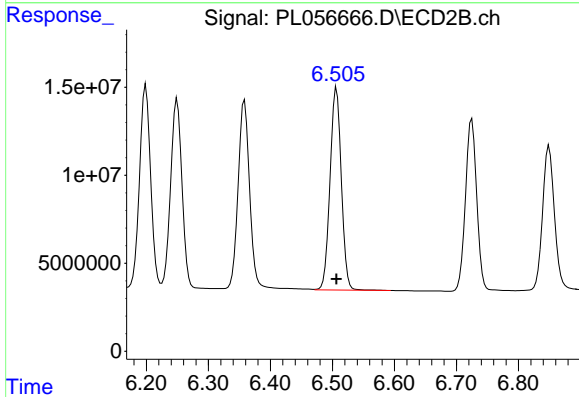
#12 4,4'-DDE

R.T.: 6.358 min
Delta R.T.: 0.000 min
Response: 141398585
Conc: 51.35 ng/ml

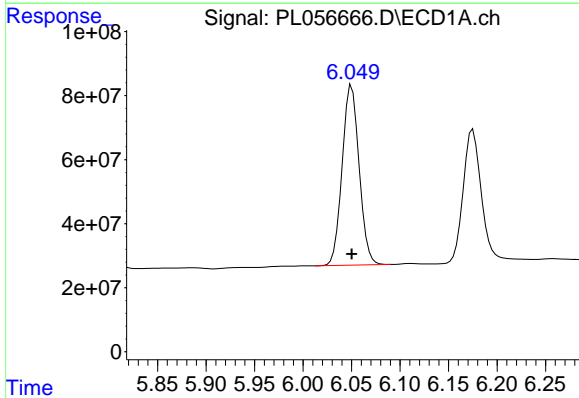


#13 Dieldrin
 R.T.: 5.792 min
 Delta R.T.: 0.000 min
 Response: 756938781
 Conc: 50.78 ng/ml

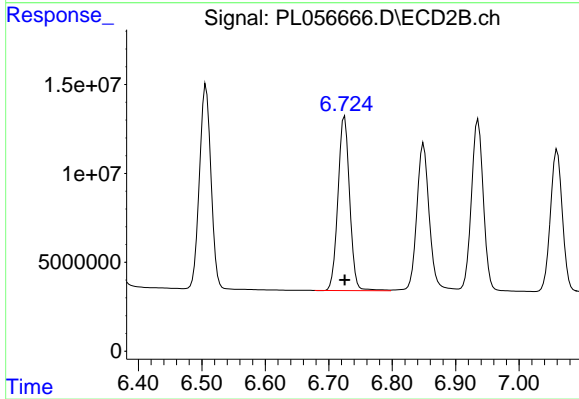
Instrument :
 ECD_L
 ClientSampled :



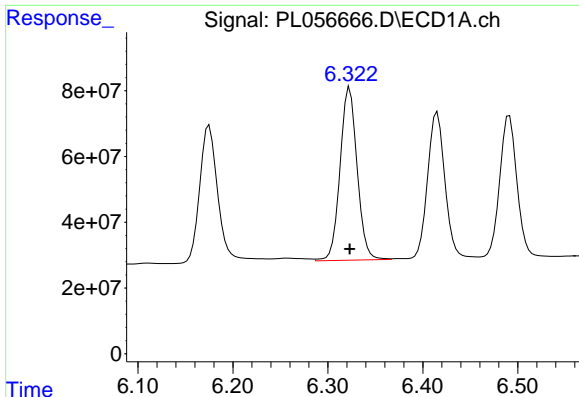
#13 Dieldrin
 R.T.: 6.507 min
 Delta R.T.: 0.000 min
 Response: 145752485
 Conc: 50.99 ng/ml



#14 Endrin
 R.T.: 6.050 min
 Delta R.T.: 0.000 min
 Response: 683909830
 Conc: 50.67 ng/ml



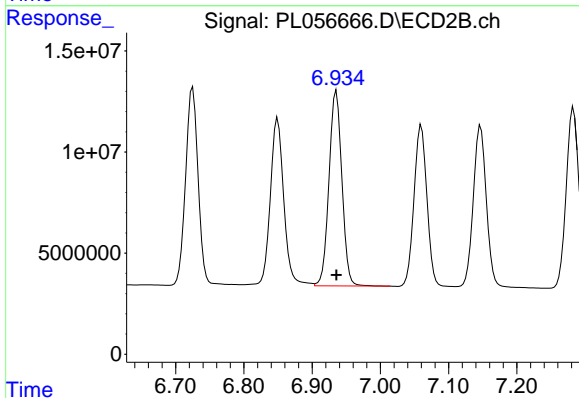
#14 Endrin
 R.T.: 6.725 min
 Delta R.T.: 0.000 min
 Response: 125438643
 Conc: 50.92 ng/ml



#15 Endosulfan II

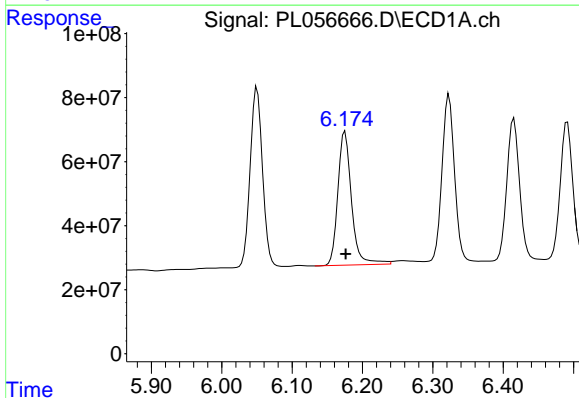
R.T.: 6.323 min
Delta R.T.: 0.000 min
Response: 657553331
Conc: 52.95 ng/ml

Instrument :
ECD_L
ClientSampleId :



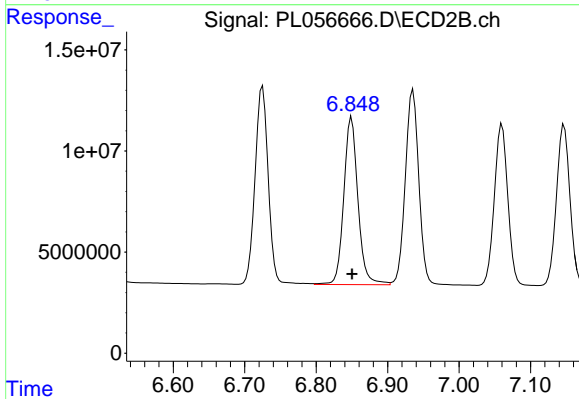
#15 Endosulfan II

R.T.: 6.936 min
Delta R.T.: 0.000 min
Response: 126761118
Conc: 49.08 ng/ml



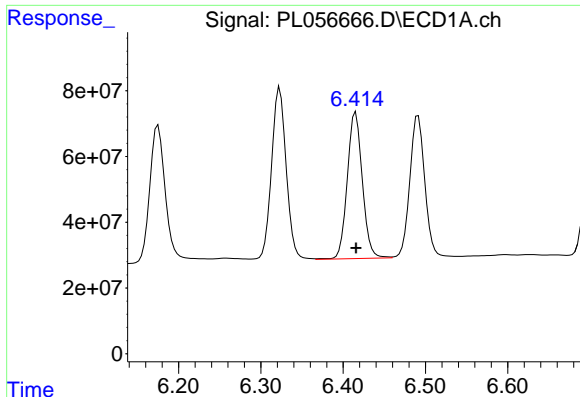
#16 4,4'-DDD

R.T.: 6.175 min
Delta R.T.: -0.001 min
Response: 564685648
Conc: 50.48 ng/ml



#16 4,4'-DDD

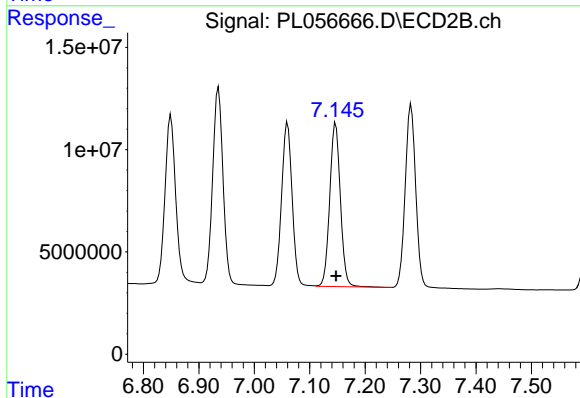
R.T.: 6.850 min
Delta R.T.: 0.000 min
Response: 114321525
Conc: 49.65 ng/ml



#17 4,4'-DDT

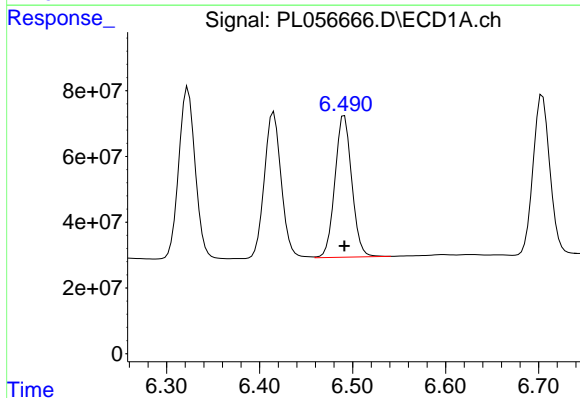
R.T.: 6.415 min
Delta R.T.: 0.000 min
Response: 567126252
Conc: 52.08 ng/ml

Instrument :
ECD_L
ClientSampled :



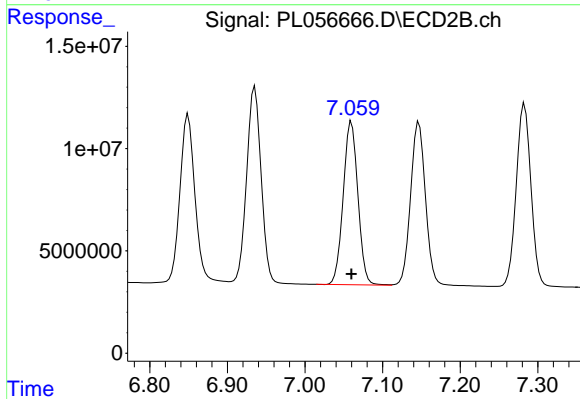
#17 4,4'-DDT

R.T.: 7.147 min
Delta R.T.: 0.000 min
Response: 106857978
Conc: 51.36 ng/ml



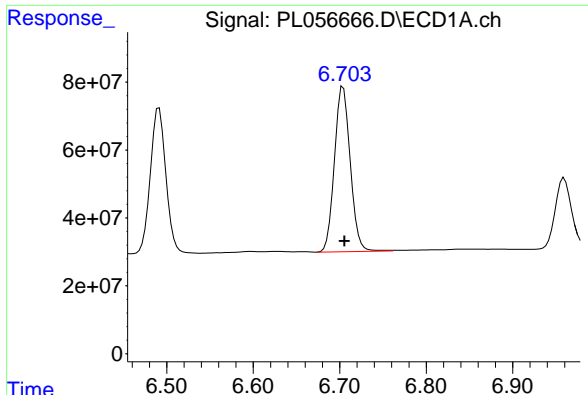
#18 Endrin aldehyde

R.T.: 6.491 min
Delta R.T.: 0.000 min
Response: 544697328
Conc: 50.32 ng/ml



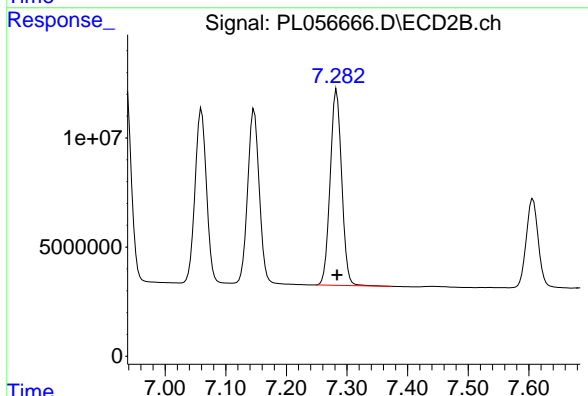
#18 Endrin aldehyde

R.T.: 7.060 min
Delta R.T.: 0.000 min
Response: 104912943
Conc: 50.01 ng/ml

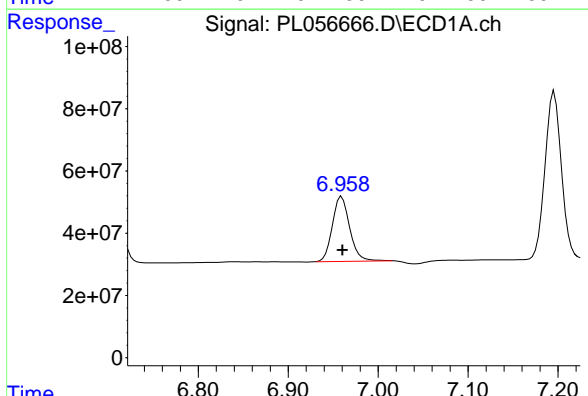


#19 Endosulfan Sulfate
 R.T.: 6.704 min
 Delta R.T.: -0.001 min
 Response: 616131724
 Conc: 51.96 ng/ml

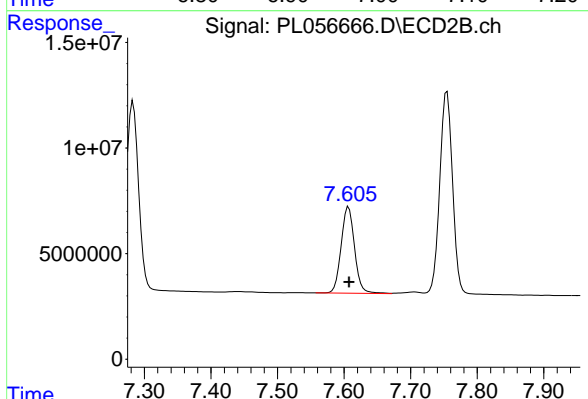
Instrument :
 ECD_L
 ClientSampleId :



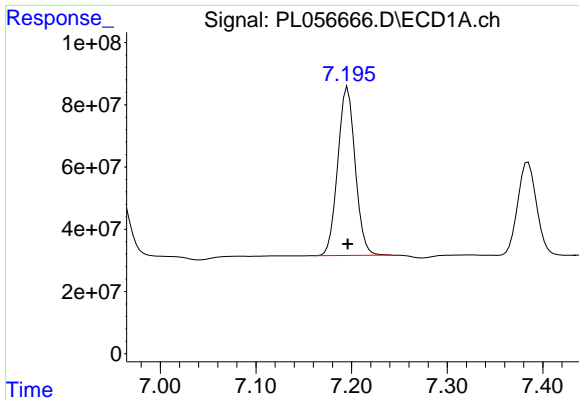
#19 Endosulfan Sulfate
 R.T.: 7.283 min
 Delta R.T.: 0.000 min
 Response: 118560414
 Conc: 49.89 ng/ml



#20 Methoxychlor
 R.T.: 6.959 min
 Delta R.T.: 0.000 min
 Response: 280201767
 Conc: 52.84 ng/ml



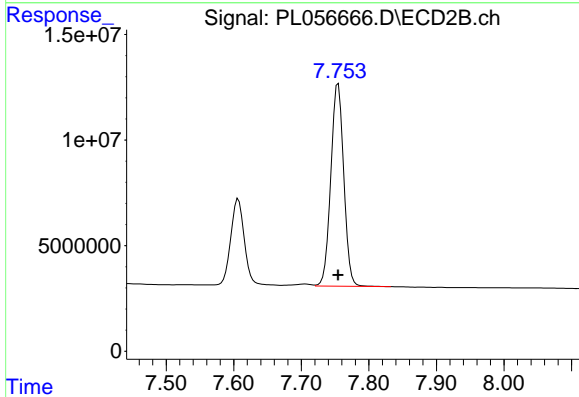
#20 Methoxychlor
 R.T.: 7.607 min
 Delta R.T.: 0.000 min
 Response: 57020538
 Conc: 51.52 ng/ml



#21 Endrin ketone

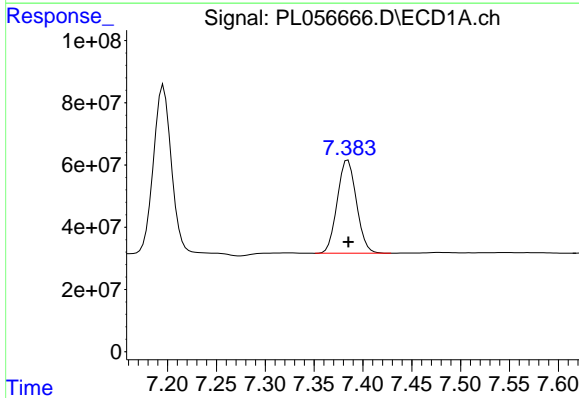
R.T.: 7.196 min
 Delta R.T.: 0.000 min
 Response: 687123488
 Conc: 51.54 ng/ml

Instrument :
 ECD_L
 ClientSampleId :



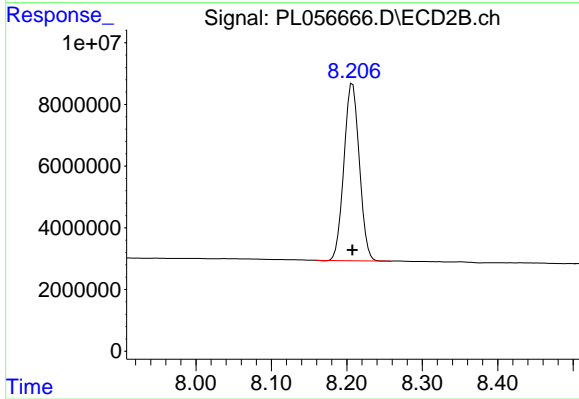
#21 Endrin ketone

R.T.: 7.755 min
 Delta R.T.: 0.000 min
 Response: 128158608
 Conc: 50.75 ng/ml



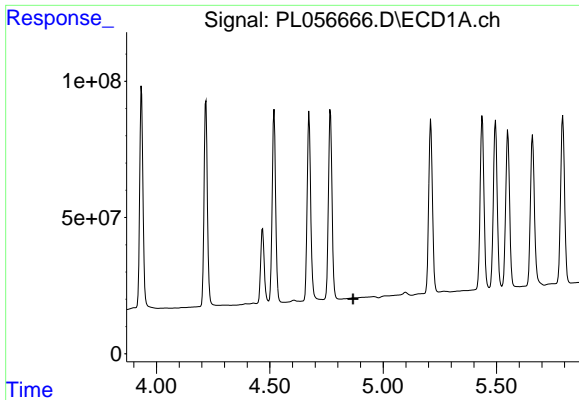
#22 Mirex

R.T.: 7.385 min
 Delta R.T.: 0.000 min
 Response: 409816827
 Conc: 48.84 ng/ml



#22 Mirex

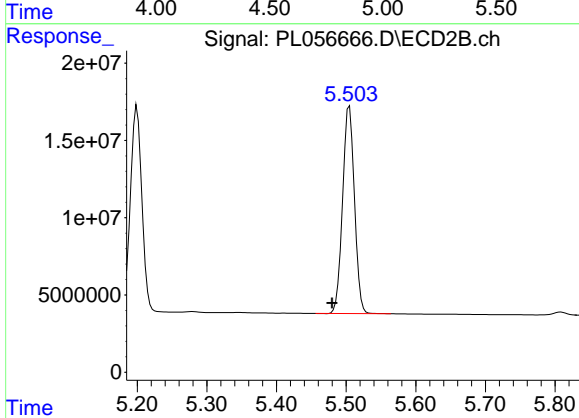
R.T.: 8.208 min
 Delta R.T.: 0.000 min
 Response: 81503600
 Conc: 48.52 ng/ml



#24 Chlordane-2

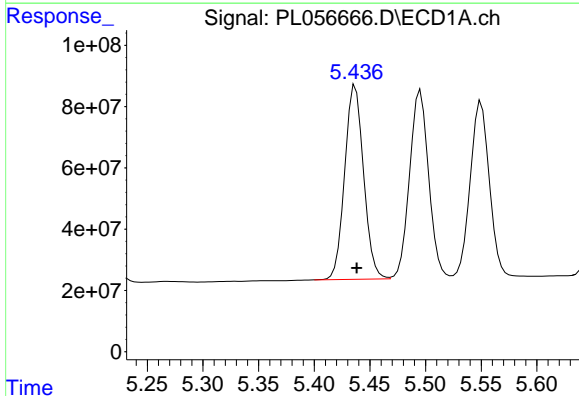
R.T.: 0.000 min
 Exp R.T.: 4.868 min
 Response: 0
 Conc: N.D.

Instrument :
 ECD_L
 ClientSampleId :



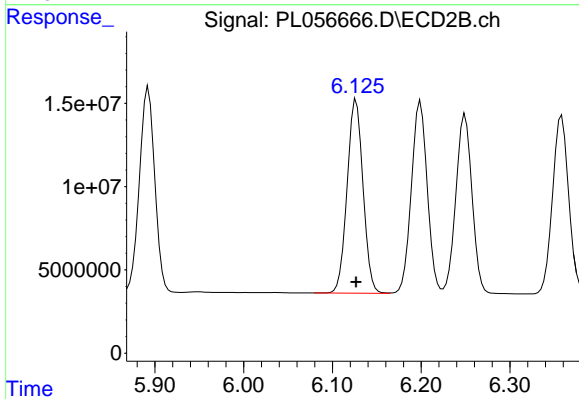
#24 Chlordane-2

R.T.: 5.505 min
 Delta R.T.: 0.025 min
 Response: 159160594
 Conc: 1612.86 ng/ml



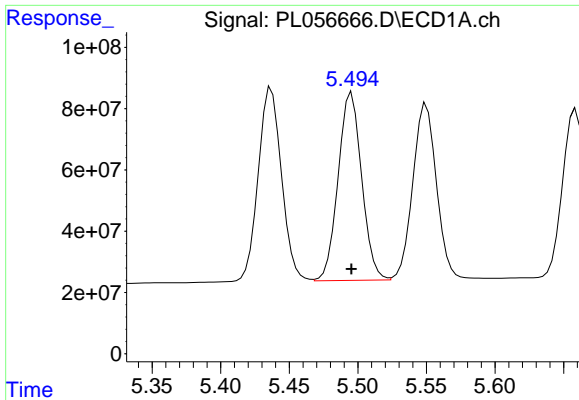
#25 Chlordane-3

R.T.: 5.437 min
 Delta R.T.: -0.001 min
 Response: 747762249
 Conc: 594.47 ng/ml



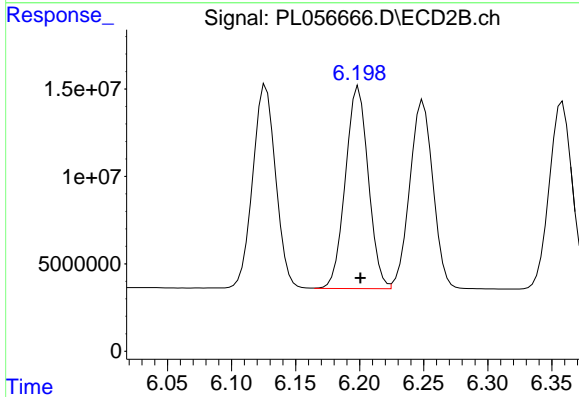
#25 Chlordane-3

R.T.: 6.127 min
 Delta R.T.: 0.000 min
 Response: 144895255
 Conc: 392.34 ng/ml

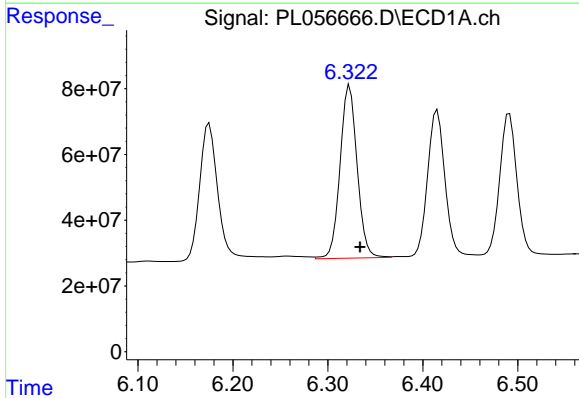


#26 Chlordane-4
 R.T.: 5.495 min
 Delta R.T.: 0.000 min
 Response: 732676046
 Conc: 682.06 ng/ml

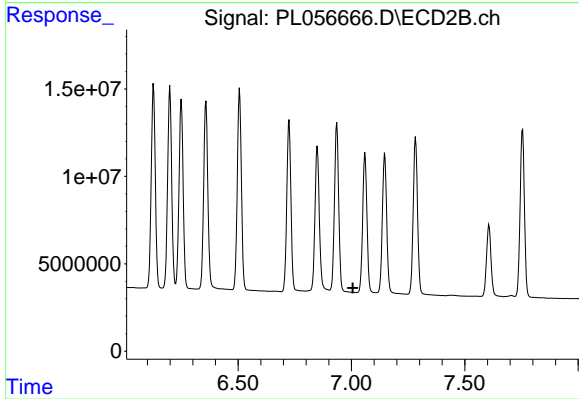
Instrument :
 ECD_L
 ClientSampled :



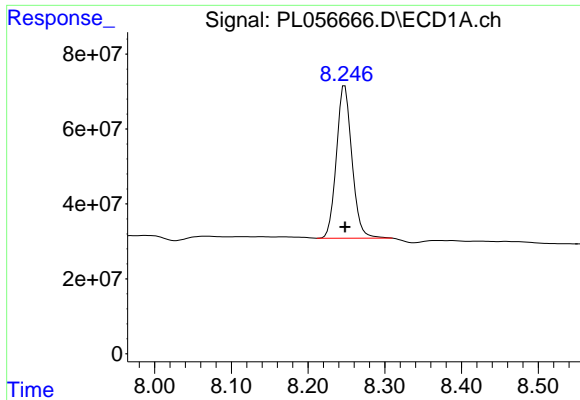
#26 Chlordane-4
 R.T.: 6.199 min
 Delta R.T.: -0.001 min
 Response: 143938256
 Conc: 335.33 ng/ml



#27 Chlordane-5
 R.T.: 6.323 min
 Delta R.T.: -0.011 min
 Response: 657553331
 Conc: 2008.18 ng/ml



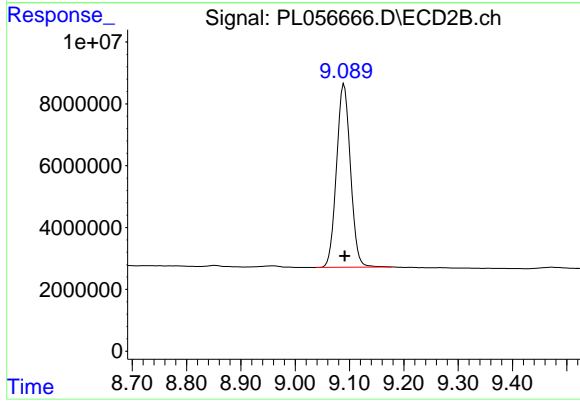
#27 Chlordane-5
 R.T.: 0.000 min
 Exp R.T.: 7.007 min
 Response: 0
 Conc: N.D.



#28 Decachlorobiphenyl

R.T.: 8.248 min
Delta R.T.: 0.000 min
Response: 573252886
Conc: 48.19 ng/ml

Instrument :
ECD_L
ClientSampleId :



#28 Decachlorobiphenyl

R.T.: 9.090 min
Delta R.T.: -0.001 min
Response: 105503959
Conc: 50.21 ng/ml