

Data Path : Z:\pestpcbsrv\HPCHEM1\ECD\_L\Data\PL022024\  
 Data File : PL088162.D  
 Signal(s) : Signal #1: ECD1A.ch Signal #2: ECD2B.ch  
 Acq On : 20 Feb 2024 17:39  
 Operator : AR\AJ  
 Sample : PSTDCCC050  
 Misc :  
 ALS Vial : 4 Sample Multiplier: 1

Instrument :  
 ECD\_L  
 ClientSampleId :  
 PSTDCCC050

Integration File signal 1: autoint1.e  
 Integration File signal 2: autoint2.e  
 Quant Time: Feb 21 00:18:28 2024  
 Quant Method : Z:\pestpcbsrv\HPCHEM1\ECD\_L\methods\PL021524.M  
 Quant Title : GC Extractables  
 QLast Update : Fri Feb 16 21:46:54 2024  
 Response via : Initial Calibration  
 Integrator: ChemStation

Volume Inj. : 1 µl  
 Signal #1 Phase : ZB-MR2 Signal #2 Phase: ZB-MR1  
 Signal #1 Info : 30M x 0.32mm x0.2 Signal #2 Info : 30M x 0.32mm x0.5µm

Compound	RT#1	RT#2	Resp#1	Resp#2	ng/ml	ng/ml
-----						
System Monitoring Compounds						
1) SA Tetrachlo...	3.635	2.854	141.9E6	70966352	51.668	50.599
2) SA Decachlor...	9.297	8.082	113.6E6	62906481	58.976	49.405
Target Compounds						
2) A alpha-BHC	4.099	3.369	217.9E6	108.1E6	52.203	52.622
3) MA gamma-BHC...	4.437	3.705	209.3E6	104.0E6	51.687	51.945
4) MA Heptachlor	5.037	4.054	196.5E6	96508639	51.069	52.975
5) MB Aldrin	5.384	4.339	196.4E6	105.6E6	51.442	54.437
6) B beta-BHC	4.634	4.007	94108000	45407822	54.034	51.015
7) B delta-BHC	4.886	4.242	215.1E6	111.1E6	56.524	55.687
8) B Heptachlo...	5.816	4.850	197.4E6	90112058	56.329	51.945
9) A Endosulfan I	6.207	5.225	159.8E6	78699527	51.052	48.910
10) B gamma-Chl...	6.074	5.104	174.8E6	92102742	51.439	51.633
11) B alpha-Chl...	6.155	5.169	174.3E6	91874538	51.083	51.573
12) B 4,4'-DDE	6.329	5.362	155.9E6	83377780	51.389	52.458
13) MA Dieldrin	6.485	5.495	169.6E6	90676969	51.589	52.555
14) MA Endrin	6.717	5.773	147.9E6	75370577	56.867	50.410
15) B Endosulfa...	6.937	6.071	155.1E6	78534756	54.158	51.552
16) A 4,4'-DDD	6.852	5.924	143.5E6	71881757	55.324	52.614
17) MA 4,4'-DDT	7.170	6.178	122.8E6	68073118	46.724	49.862
18) B Endrin al...	7.069	6.253	109.2E6	58040669	52.821	53.143
19) B Endosulfa...	7.306	6.479	139.6E6	74195269	53.602	52.829
20) A Methoxychlor	7.650	6.761	66725468	36863767	50.408	47.035
21) B Endrin ke...	7.797	6.991	153.1E6	88378189	54.652	52.788
22) Mirex	8.278	7.177	116.3E6	66437724	50.175	50.711
23) Chlordane-1	0.000	3.881	0	41503	N.D.	0.806 #
24) Chlordane-2	5.384f	4.477	196.4E6	2290373	1463.433	36.048 #
25) Chlordane-3	6.074	5.104	174.8E6	92102742	346.099	494.652 #
26) Chlordane-4	6.155	5.169	174.3E6	91874538	283.949	531.302 #
27) Chlordane-5	7.012	5.876f	438250	263740	4.330	4.985

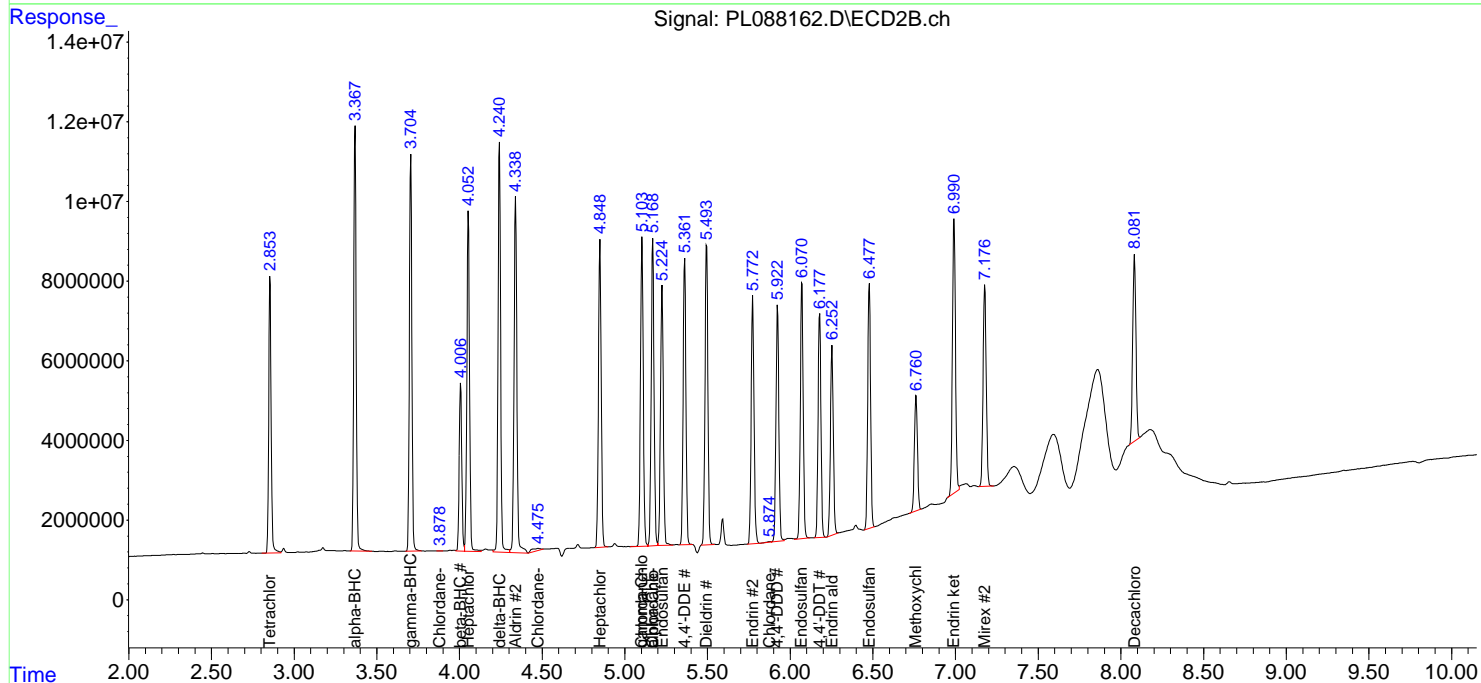
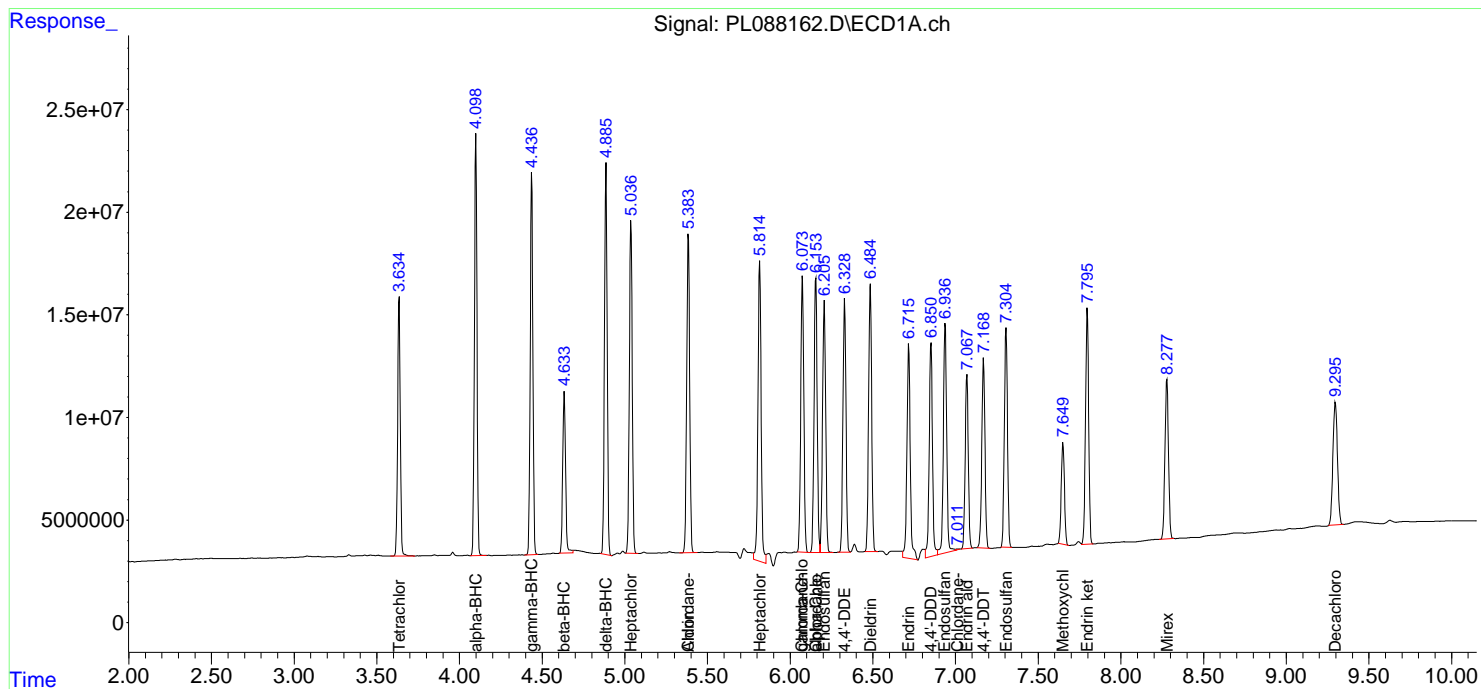
(f)=RT Delta > 1/2 Window (#)=Amounts differ by > 25% (m)=manual int.

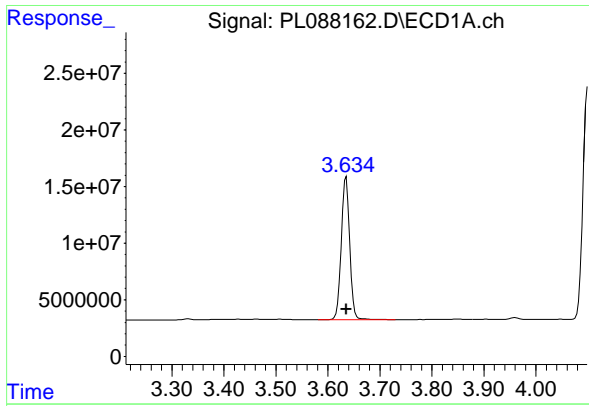
Data Path : Z:\pestpcbsrv\HPCHEM1\ECD\_L\Data\PL022024\  
 Data File : PL088162.D  
 Signal(s) : Signal #1: ECD1A.ch Signal #2: ECD2B.ch  
 Acq On : 20 Feb 2024 17:39  
 Operator : AR\AJ  
 Sample : PSTDCCC050  
 Misc :  
 ALS Vial : 4 Sample Multiplier: 1

Instrument :  
 ECD\_L  
 ClientSampleId :  
 PSTDCCC050

Integration File signal 1: autoint1.e  
 Integration File signal 2: autoint2.e  
 Quant Time: Feb 21 00:18:28 2024  
 Quant Method : Z:\pestpcbsrv\HPCHEM1\ECD\_L\methods\PL021524.M  
 Quant Title : GC Extractables  
 QLast Update : Fri Feb 16 21:46:54 2024  
 Response via : Initial Calibration  
 Integrator: ChemStation

Volume Inj. : 1 µl  
 Signal #1 Phase : ZB-MR2 Signal #2 Phase: ZB-MR1  
 Signal #1 Info : 30M x 0.32mm x0.2 Signal #2 Info : 30M x 0.32mm x0.5µm

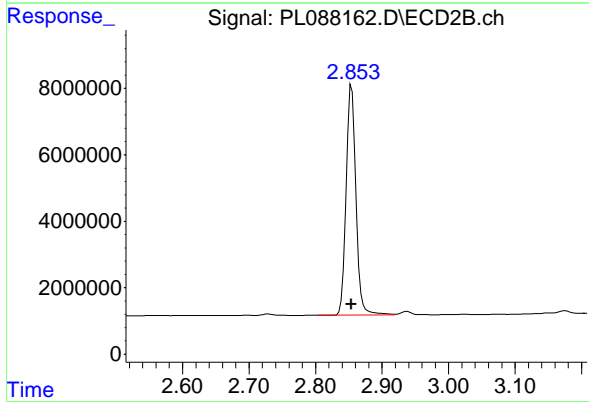




#1 Tetrachloro-m-xylene

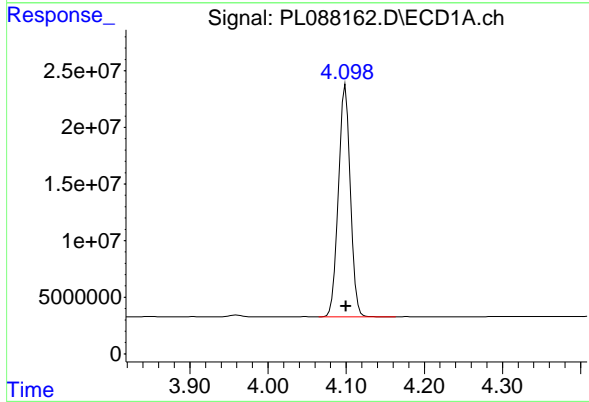
R.T.: 3.635 min  
 Delta R.T.: 0.000 min  
 Response: 141916193  
 Conc: 51.67 ng/ml

Instrument :  
 ECD\_L  
 ClientSampleId :  
 PSTDCCC050



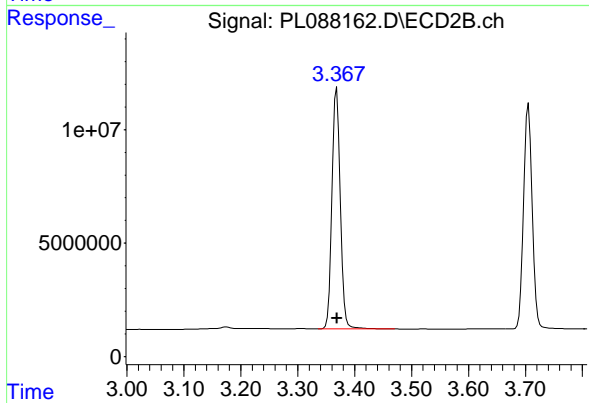
#1 Tetrachloro-m-xylene

R.T.: 2.854 min  
 Delta R.T.: 0.000 min  
 Response: 70966352  
 Conc: 50.60 ng/ml



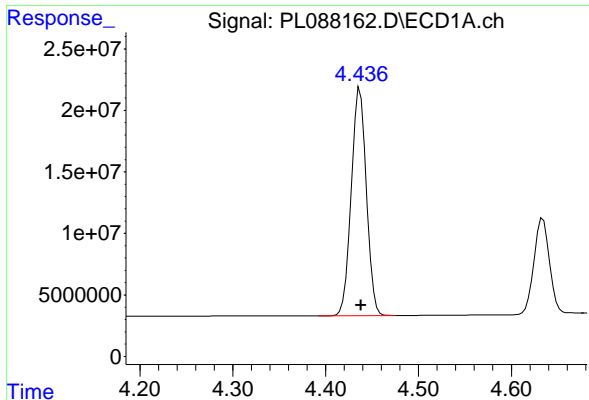
#2 alpha-BHC

R.T.: 4.099 min  
 Delta R.T.: 0.000 min  
 Response: 217908567  
 Conc: 52.20 ng/ml



#2 alpha-BHC

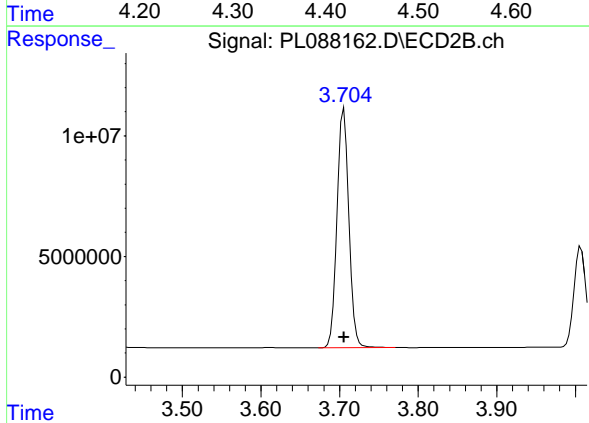
R.T.: 3.369 min  
 Delta R.T.: 0.000 min  
 Response: 108128899  
 Conc: 52.62 ng/ml



#3 gamma-BHC (Lindane)

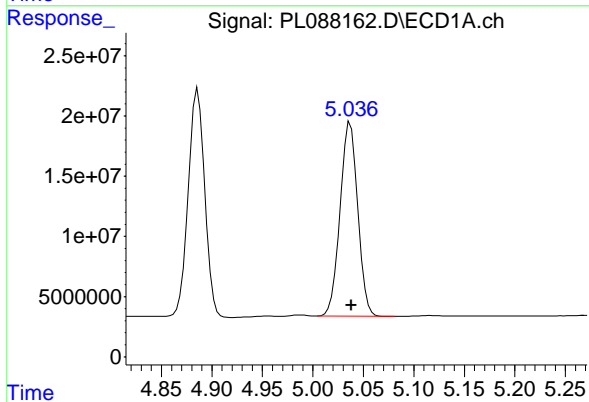
R.T.: 4.437 min  
 Delta R.T.: 0.000 min  
 Response: 209307030  
 Conc: 51.69 ng/ml

Instrument :  
 ECD\_L  
 ClientSampleId :  
 PSTDCCC050



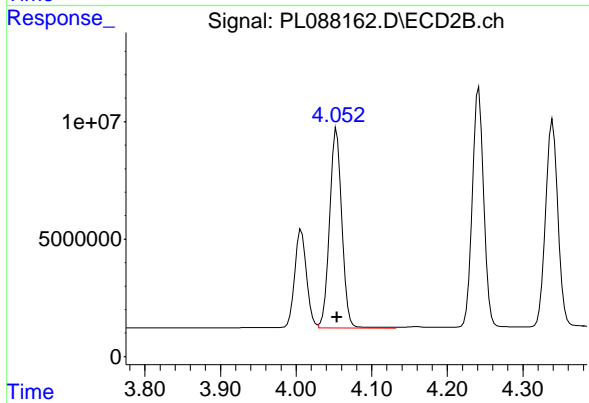
#3 gamma-BHC (Lindane)

R.T.: 3.705 min  
 Delta R.T.: 0.000 min  
 Response: 104022213  
 Conc: 51.95 ng/ml



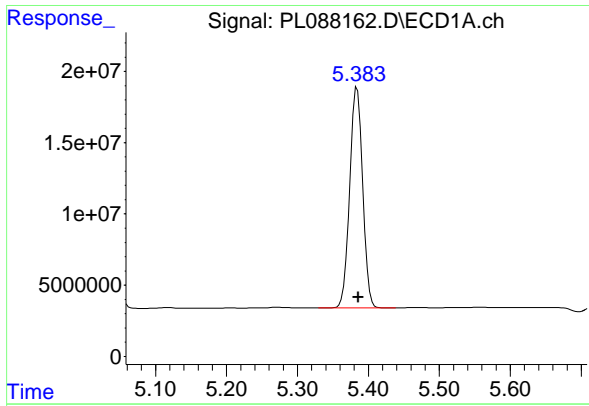
#4 Heptachlor

R.T.: 5.037 min  
 Delta R.T.: 0.000 min  
 Response: 196529251  
 Conc: 51.07 ng/ml



#4 Heptachlor

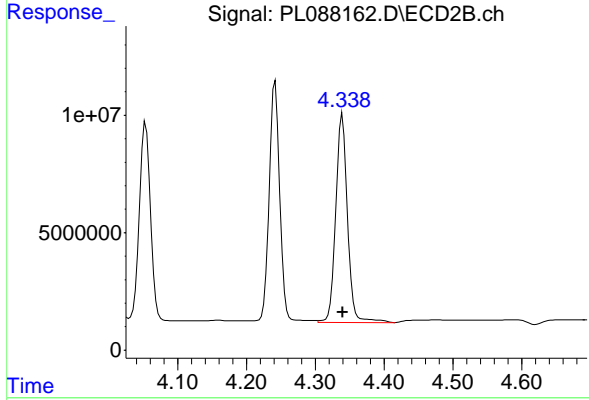
R.T.: 4.054 min  
 Delta R.T.: 0.000 min  
 Response: 96508639  
 Conc: 52.98 ng/ml



#5 Aldrin

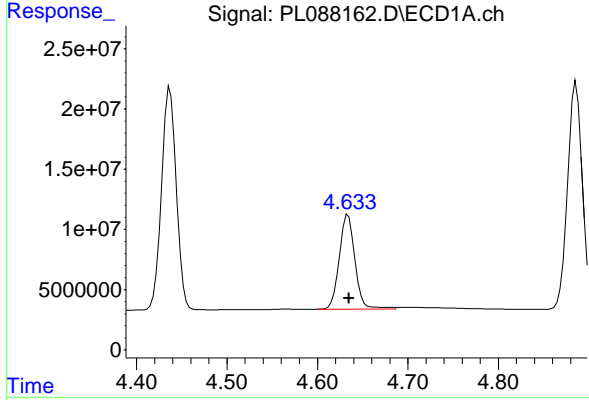
R.T.: 5.384 min  
 Delta R.T.: -0.002 min  
 Response: 196421563  
 Conc: 51.44 ng/ml

Instrument :  
 ECD\_L  
 ClientSampleId :  
 PSTDCCC050



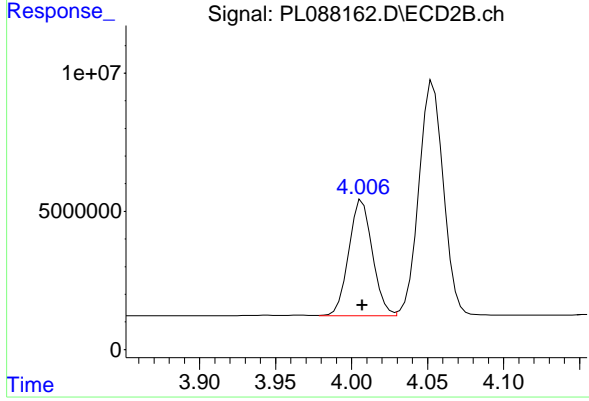
#5 Aldrin

R.T.: 4.339 min  
 Delta R.T.: 0.000 min  
 Response: 105577564  
 Conc: 54.44 ng/ml



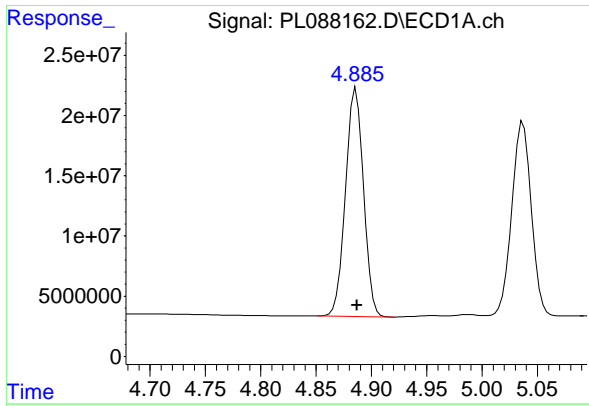
#6 beta-BHC

R.T.: 4.634 min  
 Delta R.T.: -0.001 min  
 Response: 94108000  
 Conc: 54.03 ng/ml



#6 beta-BHC

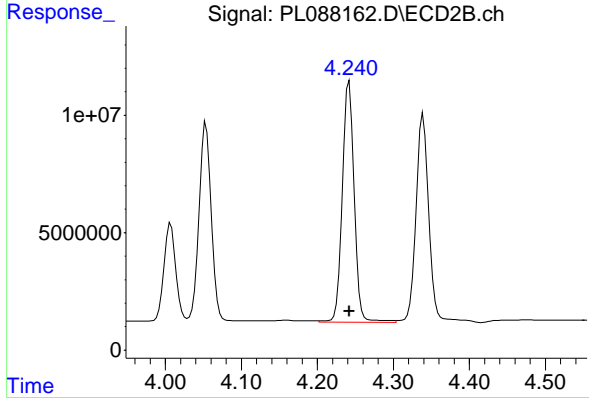
R.T.: 4.007 min  
 Delta R.T.: 0.000 min  
 Response: 45407822  
 Conc: 51.02 ng/ml



#7 delta-BHC

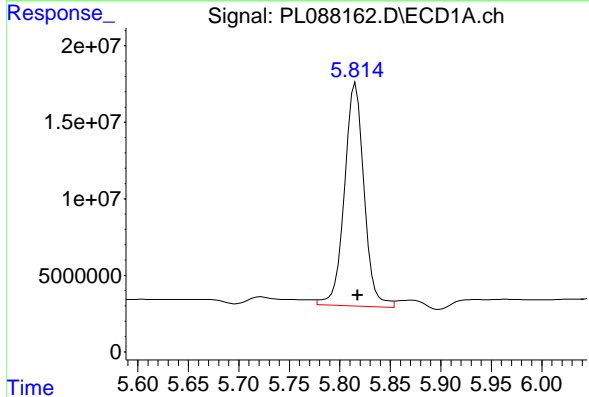
R.T.: 4.886 min  
 Delta R.T.: -0.001 min  
 Response: 215060107  
 Conc: 56.52 ng/ml

Instrument :  
 ECD\_L  
 ClientSampleId :  
 PSTDCCC050



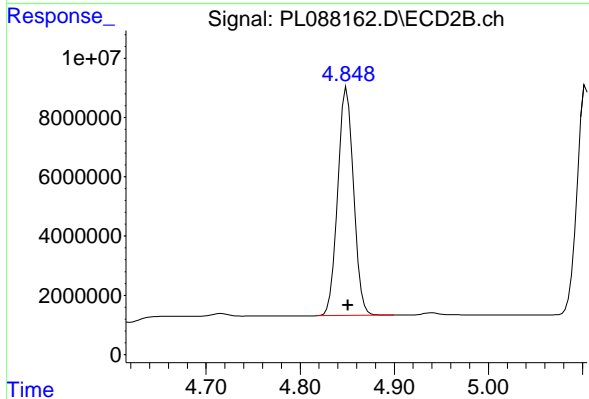
#7 delta-BHC

R.T.: 4.242 min  
 Delta R.T.: 0.000 min  
 Response: 111084770  
 Conc: 55.69 ng/ml



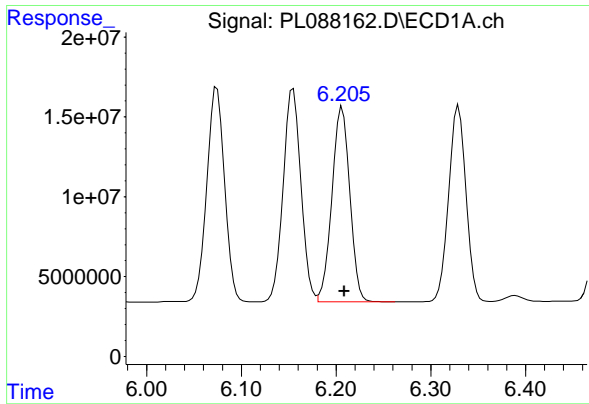
#8 Heptachlor epoxide

R.T.: 5.816 min  
 Delta R.T.: -0.002 min  
 Response: 197354921  
 Conc: 56.33 ng/ml



#8 Heptachlor epoxide

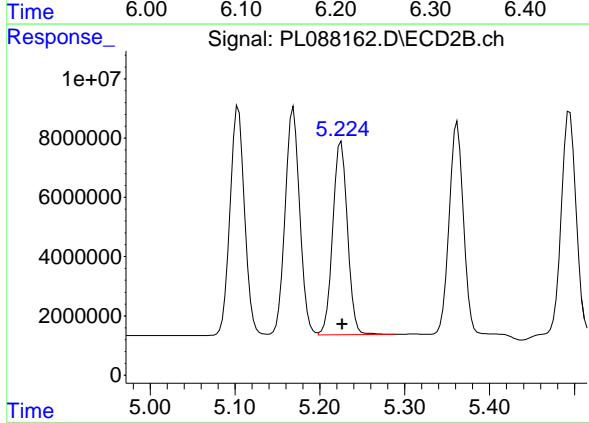
R.T.: 4.850 min  
 Delta R.T.: 0.000 min  
 Response: 90112058  
 Conc: 51.94 ng/ml



#9 Endosulfan I

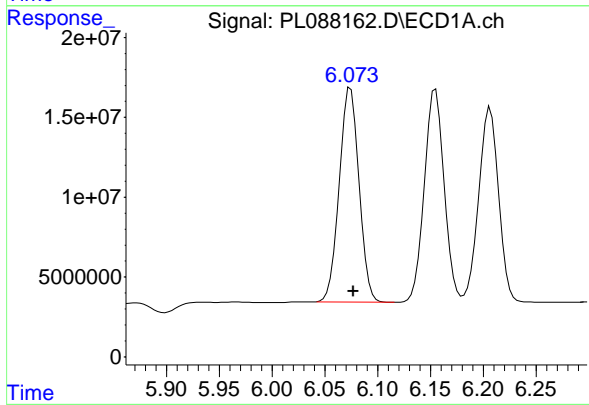
R.T.: 6.207 min  
 Delta R.T.: -0.002 min  
 Response: 159787851  
 Conc: 51.05 ng/ml

Instrument : ECD\_L  
 ClientSampleId : PSTDCCC050



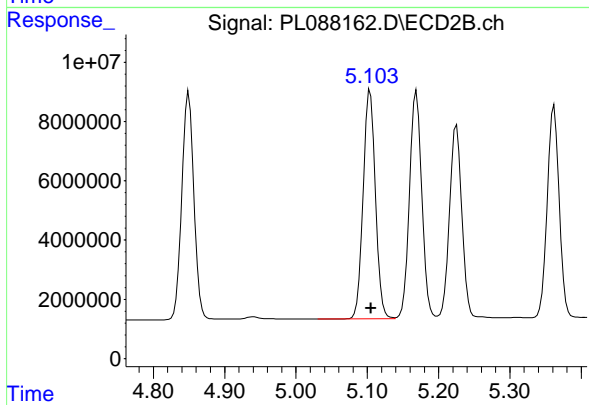
#9 Endosulfan I

R.T.: 5.225 min  
 Delta R.T.: -0.001 min  
 Response: 78699527  
 Conc: 48.91 ng/ml



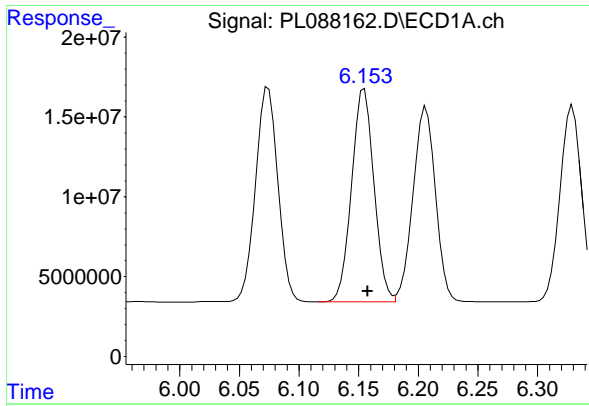
#10 gamma-Chlordane

R.T.: 6.074 min  
 Delta R.T.: -0.003 min  
 Response: 174804902  
 Conc: 51.44 ng/ml



#10 gamma-Chlordane

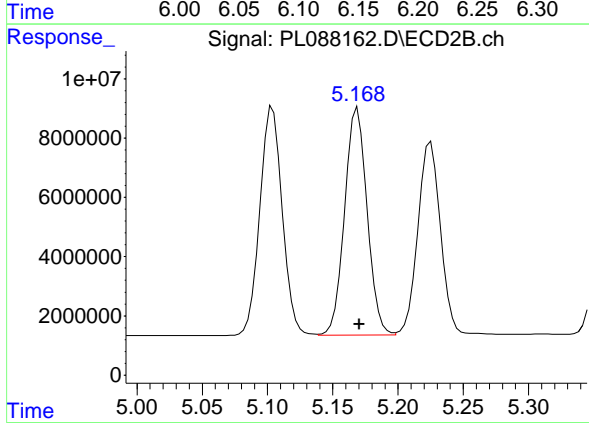
R.T.: 5.104 min  
 Delta R.T.: -0.001 min  
 Response: 92102742  
 Conc: 51.63 ng/ml



#11 alpha-Chlordane

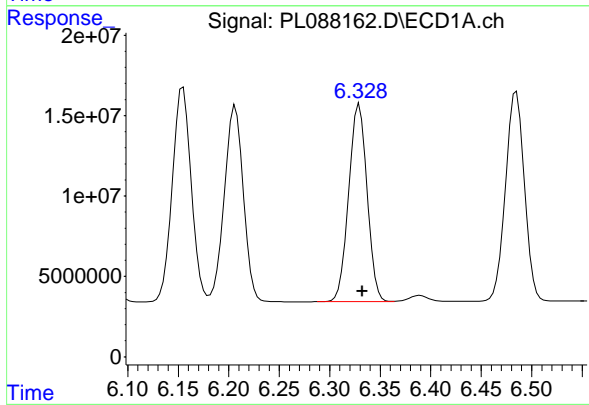
R.T.: 6.155 min  
 Delta R.T.: -0.003 min  
 Response: 174332861  
 Conc: 51.08 ng/ml

Instrument : ECD\_L  
 ClientSampleId : PSTDCCC050



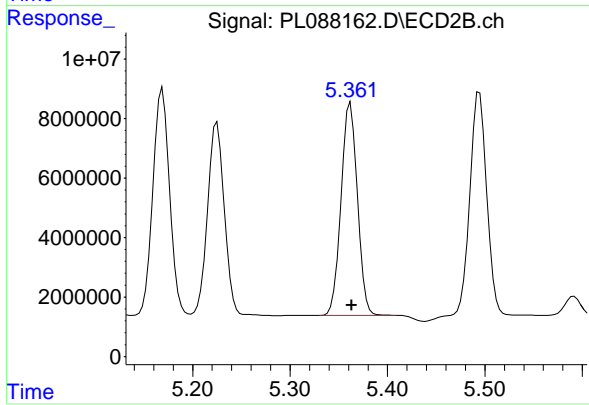
#11 alpha-Chlordane

R.T.: 5.169 min  
 Delta R.T.: -0.001 min  
 Response: 91874538  
 Conc: 51.57 ng/ml



#12 4,4'-DDE

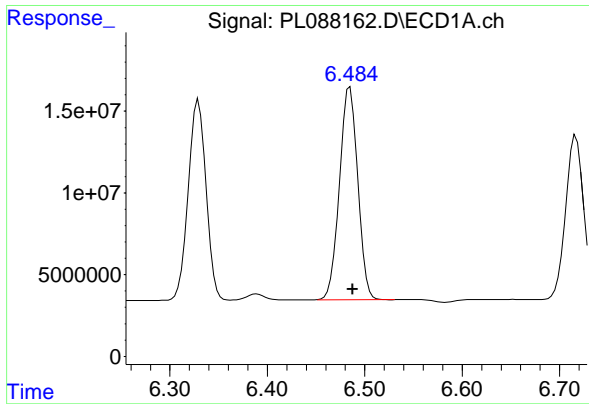
R.T.: 6.329 min  
 Delta R.T.: -0.003 min  
 Response: 155855763  
 Conc: 51.39 ng/ml



#12 4,4'-DDE

R.T.: 5.362 min  
 Delta R.T.: -0.001 min  
 Response: 83377780  
 Conc: 52.46 ng/ml

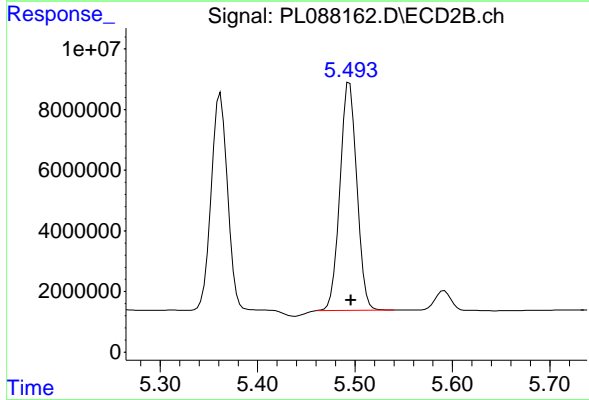




#13 Dieldrin

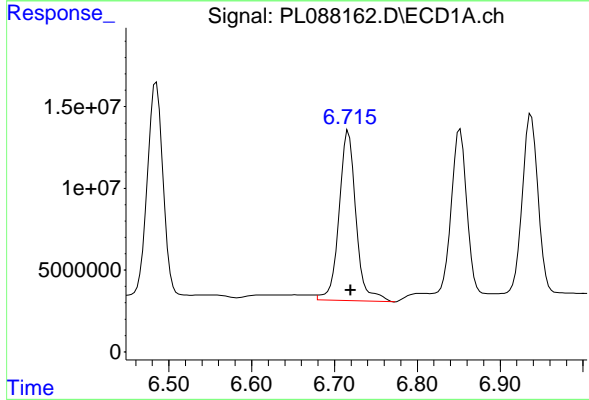
R.T.: 6.485 min  
 Delta R.T.: -0.003 min  
 Response: 169632912  
 Conc: 51.59 ng/ml

Instrument :  
 ECD\_L  
 ClientSampleId :  
 PSTDCCC050



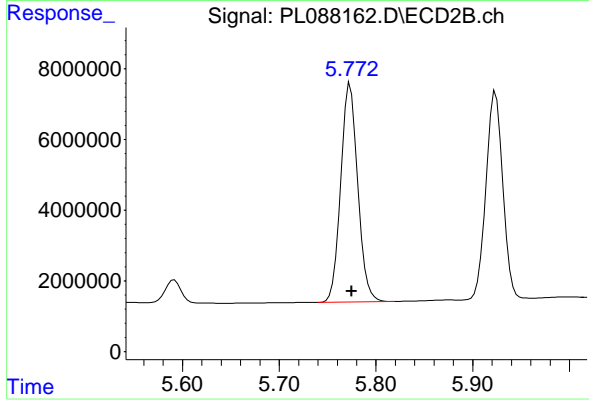
#13 Dieldrin

R.T.: 5.495 min  
 Delta R.T.: -0.001 min  
 Response: 90676969  
 Conc: 52.56 ng/ml



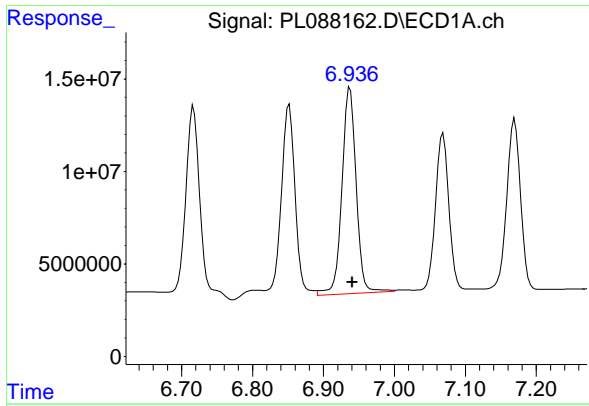
#14 Endrin

R.T.: 6.717 min  
 Delta R.T.: -0.003 min  
 Response: 147890128  
 Conc: 56.87 ng/ml



#14 Endrin

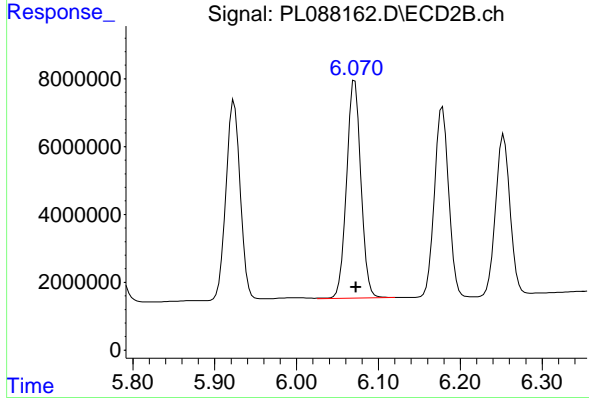
R.T.: 5.773 min  
 Delta R.T.: -0.001 min  
 Response: 75370577  
 Conc: 50.41 ng/ml



#15 Endosulfan II

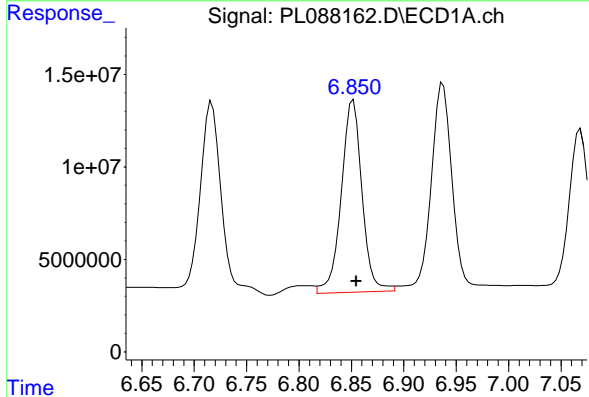
R.T.: 6.937 min  
 Delta R.T.: -0.003 min  
 Response: 155103263  
 Conc: 54.16 ng/ml

Instrument :  
 ECD\_L  
 ClientSampleId :  
 PSTDCCC050



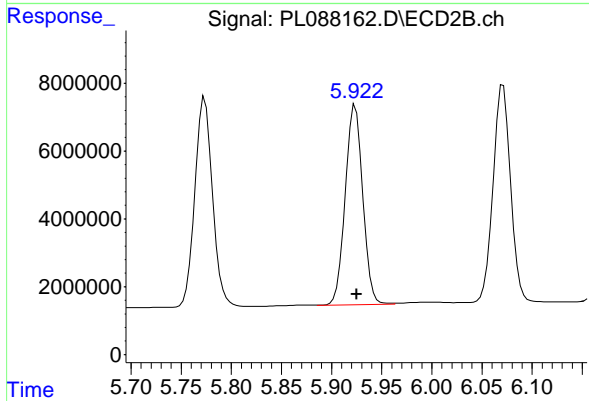
#15 Endosulfan II

R.T.: 6.071 min  
 Delta R.T.: -0.001 min  
 Response: 78534756  
 Conc: 51.55 ng/ml



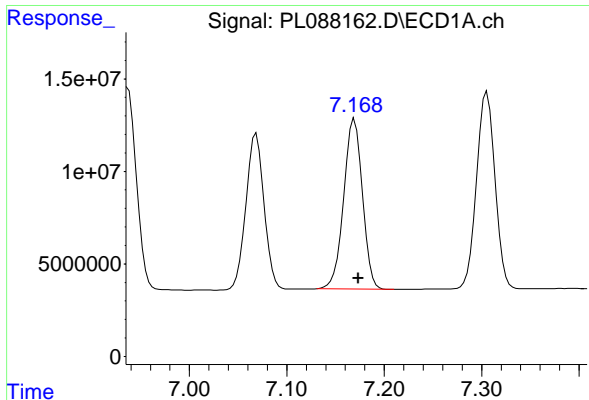
#16 4,4'-DDD

R.T.: 6.852 min  
 Delta R.T.: -0.003 min  
 Response: 143494827  
 Conc: 55.32 ng/ml



#16 4,4'-DDD

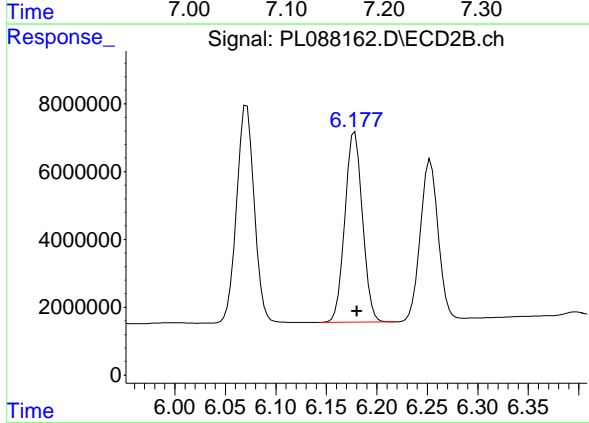
R.T.: 5.924 min  
 Delta R.T.: -0.001 min  
 Response: 71881757  
 Conc: 52.61 ng/ml



#17 4,4'-DDT

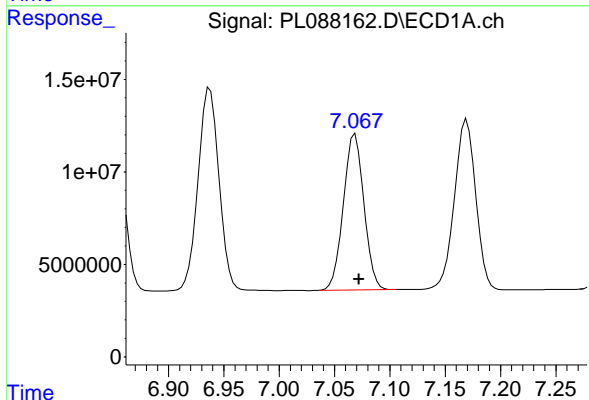
R.T.: 7.170 min  
 Delta R.T.: -0.004 min  
 Response: 122846956  
 Conc: 46.72 ng/ml

Instrument :  
 ECD\_L  
 ClientSampleId :  
 PSTDCCC050



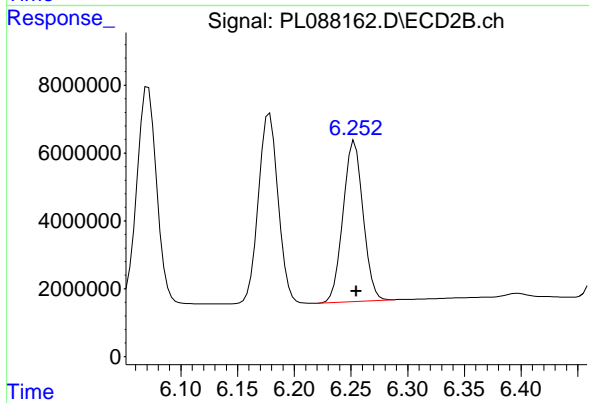
#17 4,4'-DDT

R.T.: 6.178 min  
 Delta R.T.: -0.002 min  
 Response: 68073118  
 Conc: 49.86 ng/ml



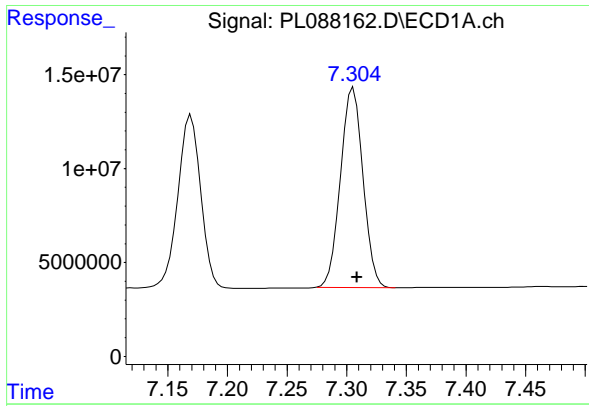
#18 Endrin aldehyde

R.T.: 7.069 min  
 Delta R.T.: -0.003 min  
 Response: 109216515  
 Conc: 52.82 ng/ml



#18 Endrin aldehyde

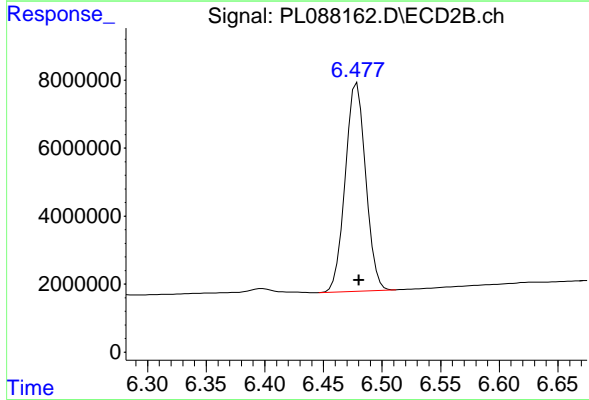
R.T.: 6.253 min  
 Delta R.T.: -0.002 min  
 Response: 58040669  
 Conc: 53.14 ng/ml



#19 Endosulfan Sulfate

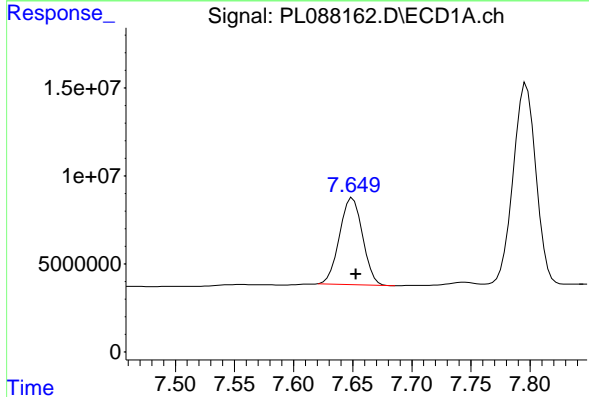
R.T.: 7.306 min  
 Delta R.T.: -0.003 min  
 Response: 139642907  
 Conc: 53.60 ng/ml

Instrument :  
 ECD\_L  
 ClientSampleId :  
 PSTDCCC050



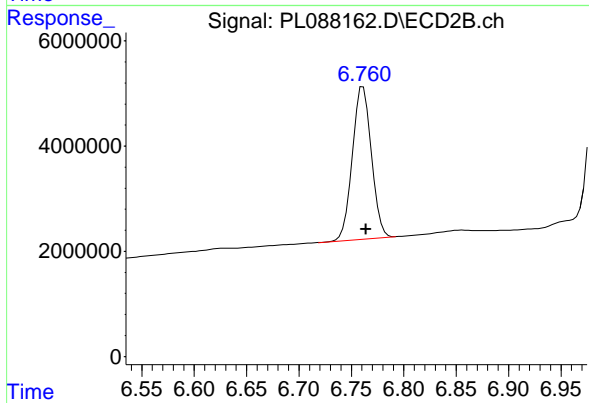
#19 Endosulfan Sulfate

R.T.: 6.479 min  
 Delta R.T.: -0.002 min  
 Response: 74195269  
 Conc: 52.83 ng/ml



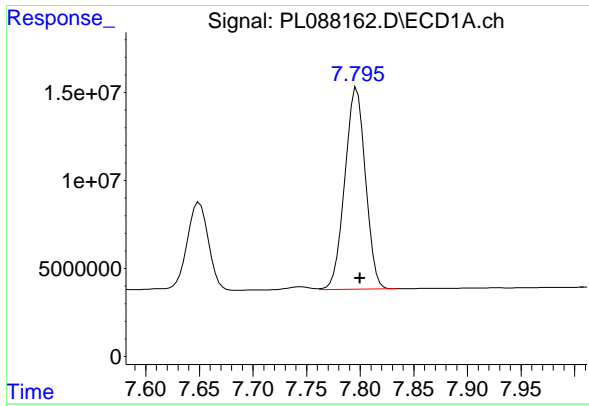
#20 Methoxychlor

R.T.: 7.650 min  
 Delta R.T.: -0.003 min  
 Response: 66725468  
 Conc: 50.41 ng/ml



#20 Methoxychlor

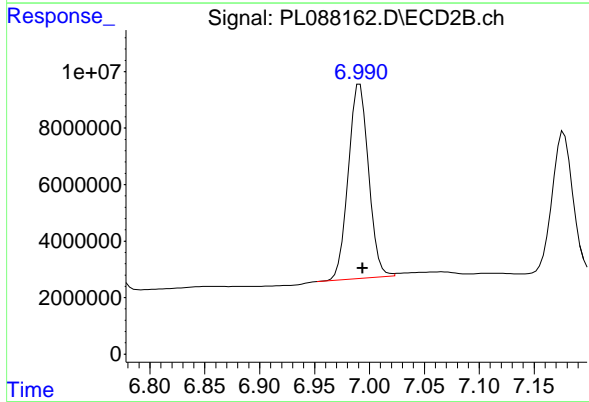
R.T.: 6.761 min  
 Delta R.T.: -0.003 min  
 Response: 36863767  
 Conc: 47.03 ng/ml



#21 Endrin ketone

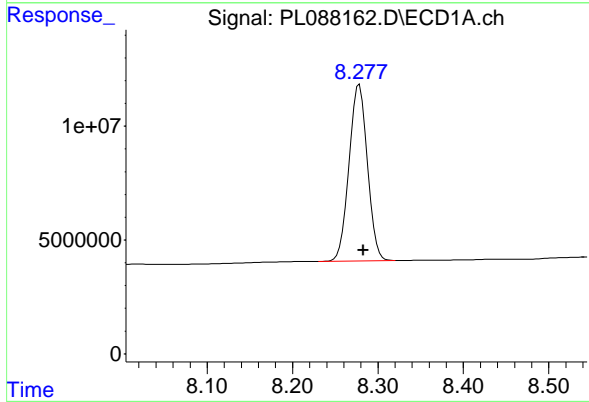
R.T.: 7.797 min  
 Delta R.T.: -0.003 min  
 Response: 153087885  
 Conc: 54.65 ng/ml

Instrument :  
 ECD\_L  
 ClientSampleId :  
 PSTDCCC050



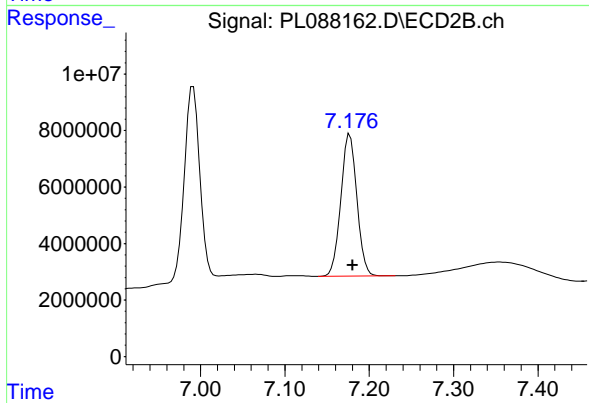
#21 Endrin ketone

R.T.: 6.991 min  
 Delta R.T.: -0.003 min  
 Response: 88378189  
 Conc: 52.79 ng/ml



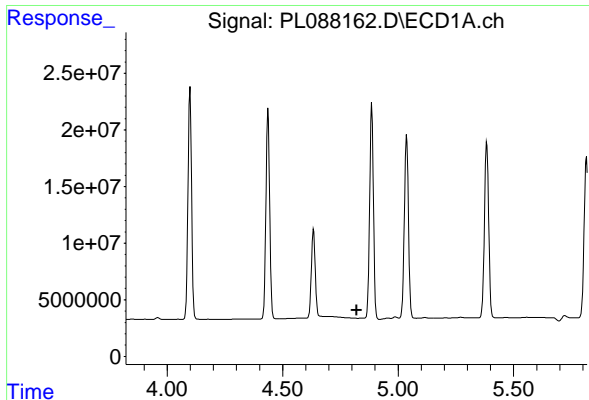
#22 Mirex

R.T.: 8.278 min  
 Delta R.T.: -0.004 min  
 Response: 116265254  
 Conc: 50.18 ng/ml



#22 Mirex

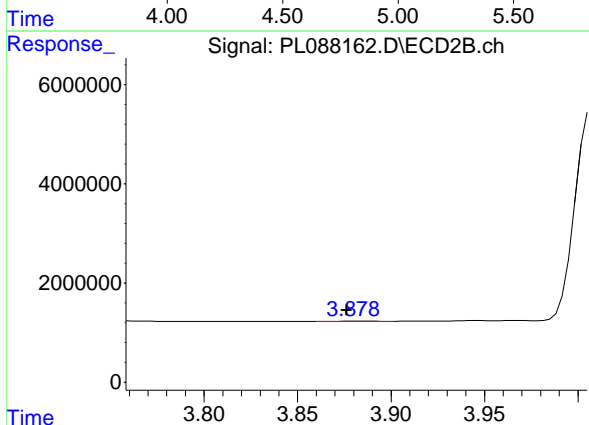
R.T.: 7.177 min  
 Delta R.T.: -0.003 min  
 Response: 66437724  
 Conc: 50.71 ng/ml



#23 Chlordane-1

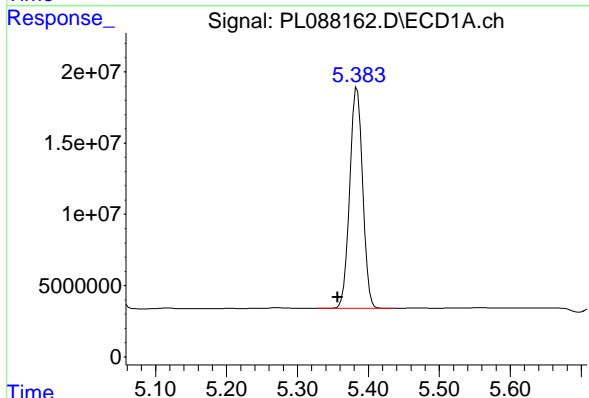
R.T.: 0.000 min  
 Exp R.T.: 4.820 min  
 Response: 0  
 Conc: N.D.

Instrument : ECD\_L  
 ClientSampleId : PSTDCCC050



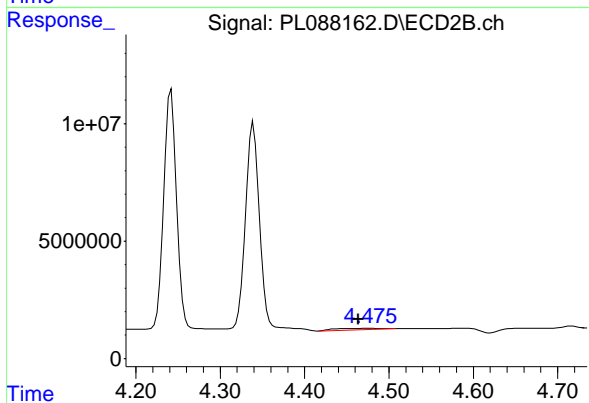
#23 Chlordane-1

R.T.: 3.881 min  
 Delta R.T.: 0.005 min  
 Response: 41503  
 Conc: 0.81 ng/ml



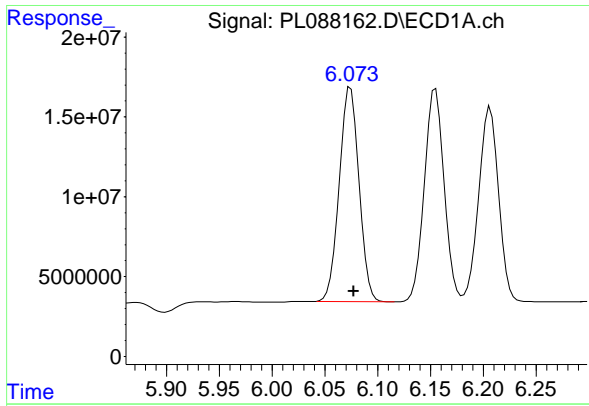
#24 Chlordane-2

R.T.: 5.384 min  
 Delta R.T.: 0.028 min  
 Response: 196421563  
 Conc: 1463.43 ng/ml



#24 Chlordane-2

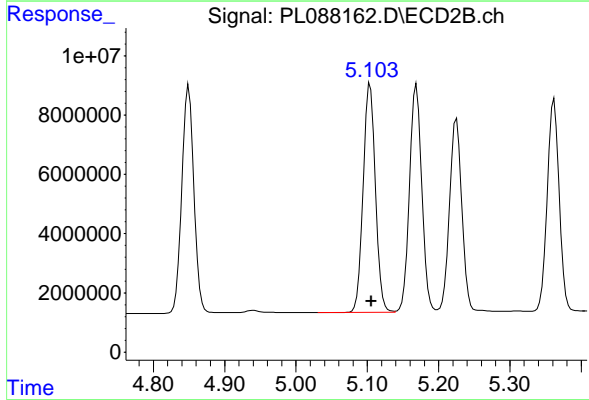
R.T.: 4.477 min  
 Delta R.T.: 0.013 min  
 Response: 2290373  
 Conc: 36.05 ng/ml



#25 Chlordane-3

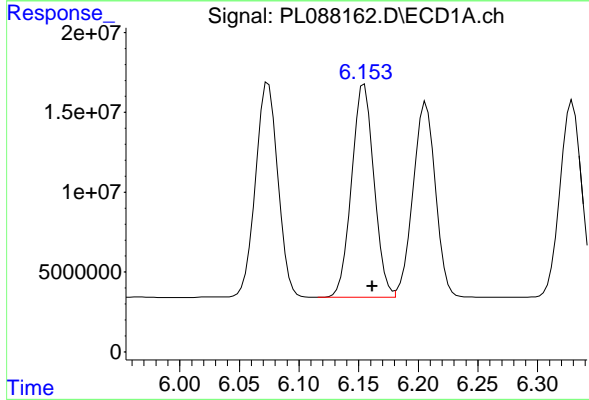
R.T.: 6.074 min  
 Delta R.T.: -0.003 min  
 Response: 174804902  
 Conc: 346.10 ng/ml

Instrument :  
 ECD\_L  
 ClientSampleId :  
 PSTDCCC050



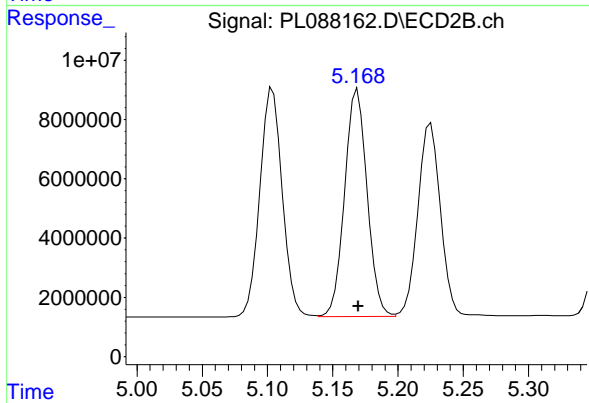
#25 Chlordane-3

R.T.: 5.104 min  
 Delta R.T.: -0.002 min  
 Response: 92102742  
 Conc: 494.65 ng/ml



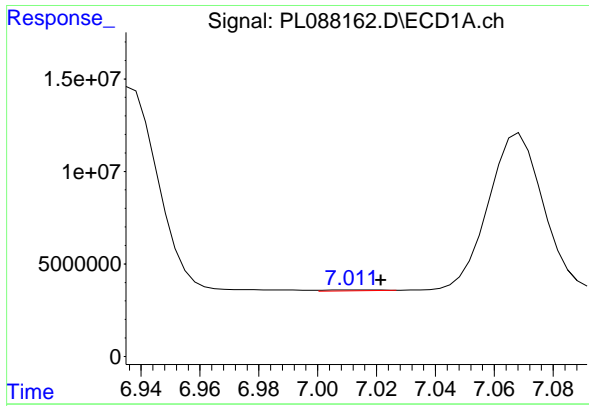
#26 Chlordane-4

R.T.: 6.155 min  
 Delta R.T.: -0.007 min  
 Response: 174332861  
 Conc: 283.95 ng/ml



#26 Chlordane-4

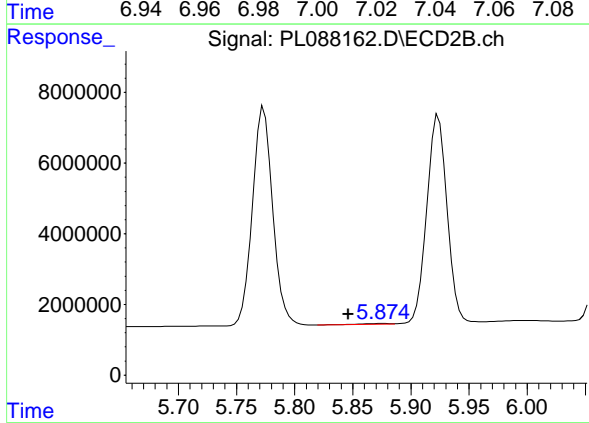
R.T.: 5.169 min  
 Delta R.T.: 0.000 min  
 Response: 91874538  
 Conc: 531.30 ng/ml



#27 Chlordane-5

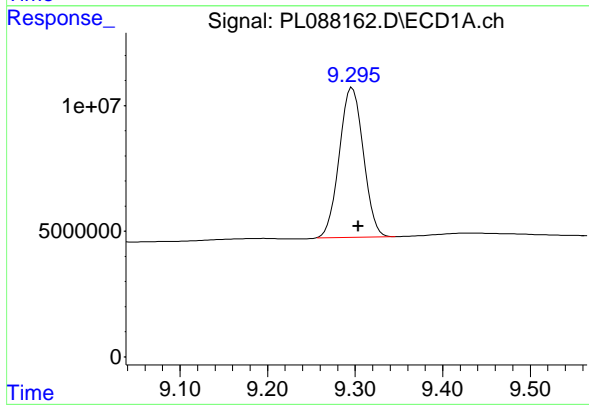
R.T.: 7.012 min  
 Delta R.T.: -0.010 min  
 Response: 438250  
 Conc: 4.33 ng/ml

Instrument : ECD\_L  
 ClientSampleId : PSTDCCC050



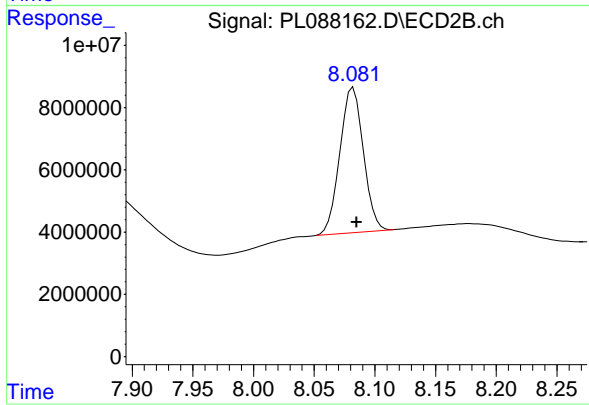
#27 Chlordane-5

R.T.: 5.876 min  
 Delta R.T.: 0.029 min  
 Response: 263740  
 Conc: 4.99 ng/ml



#28 Decachlorobiphenyl

R.T.: 9.297 min  
 Delta R.T.: -0.007 min  
 Response: 113584160  
 Conc: 58.98 ng/ml



#28 Decachlorobiphenyl

R.T.: 8.082 min  
 Delta R.T.: -0.003 min  
 Response: 62906481  
 Conc: 49.40 ng/ml