

Data Path : Z:\pestpcbsrv\HPCHEM1\ECD_L\Data\PL022120\
 Data File : PL056737.D
 Signal(s) : Signal #1: ECD1A.ch Signal #2: ECD2B.ch
 Acq On : 21 Feb 2020 16:24
 Operator : AJ\MA
 Sample : PSTDCCC050
 Misc :
 ALS Vial : 4 Sample Multiplier: 1

Instrument :
 ECD_L
 ClientSampleId :

Integration File signal 1: autoint1.e
 Integration File signal 2: autoint2.e
 Quant Time: Feb 21 22:26:44 2020
 Quant Method : Z:\pestpcbsrv\HPCHEM1\ECD_L\methods\PL021920.M
 Quant Title : GC Extractables
 QLast Update : Thu Feb 20 02:32:45 2020
 Response via : Initial Calibration
 Integrator: ChemStation

Volume Inj. : 1 µl
 Signal #1 Phase : ZB-MR2 Signal #2 Phase: ZB-MR1
 Signal #1 Info : 30M x 0.32mm x0.2 Signal #2 Info : 30M x 0.32mm x0.5µm

	Compound	RT#1	RT#2	Resp#1	Resp#2	ng/ml	ng/ml

System Monitoring Compounds							
1)	SA Tetrachlo...	3.497	4.019	466.4E6	129.4E6	53.928	51.963
28)	SA Decachlor...	8.250	9.088	549.9E6	106.6E6	46.227	50.736
Target Compounds							
2)	A alpha-BHC	3.936	4.408	814.8E6	200.7E6	51.619	53.357
3)	MA gamma-BHC...	4.220	4.692	771.0E6	185.3E6	51.684	53.800
4)	MA Heptachlor	4.521	5.199	756.0E6	151.9E6	51.271	51.913
5)	MB Aldrin	4.769	5.504	766.9E6	160.8E6	51.369	51.382
6)	B beta-BHC	4.470	4.865	301.1E6	73836782	51.948	56.477
7)	B delta-BHC	4.675	5.082	757.3E6	168.9E6	52.539	55.473
8)	Heptachlo...	5.212	5.891	724.0E6	150.7E6	51.178	51.557
9)	A Endosulfan I	5.552	6.248	681.7E6	138.7E6	50.995	51.355
10)	B gamma-Chl...	5.439	6.125	748.4E6	148.3E6	51.519	51.715
11)	B alpha-Chl...	5.497	6.198	734.3E6	147.3E6	50.849	51.763
12)	B 4,4'-DDE	5.661	6.357	691.6E6	139.4E6	49.167	50.632
13)	MA Dieldrin	5.794	6.505	749.1E6	146.0E6	50.258	51.067
14)	MA Endrin	6.052	6.724	665.2E6	123.8E6	49.285	50.260
15)	B Endosulfa...	6.325	6.934	635.1E6	128.3E6	51.140	49.674
16)	A 4,4'-DDD	6.178	6.849	556.9E6	114.5E6	49.792	49.732
17)	MA 4,4'-DDT	6.417	7.146	529.3E6	105.1E6	48.599	50.532
18)	B Endrin al...	6.493	7.059	538.6E6	106.4E6	49.758	50.714
19)	B Endosulfa...	6.706	7.282	609.3E6	119.7E6	51.388	50.373
20)	A Methoxychlor	6.962	7.606	267.8E6	56180545	50.502	50.763
21)	B Endrin ke...	7.198	7.754	676.7E6	129.0E6	50.758	51.095
22)	Mirex	7.387	8.206	456.4E6	87457743	54.385	52.060
24)	Chlordane-2	0.000	5.504f	0	160.8E6	N.D.	1629.610 #
25)	Chlordane-3	5.439	6.125	748.4E6	148.3E6	594.948	401.629 #
26)	Chlordane-4	5.497	6.198	734.3E6	147.3E6	683.545	343.129 #
27)	Chlordane-5	6.325	0.000	635.1E6	0	1939.683	N.D. #

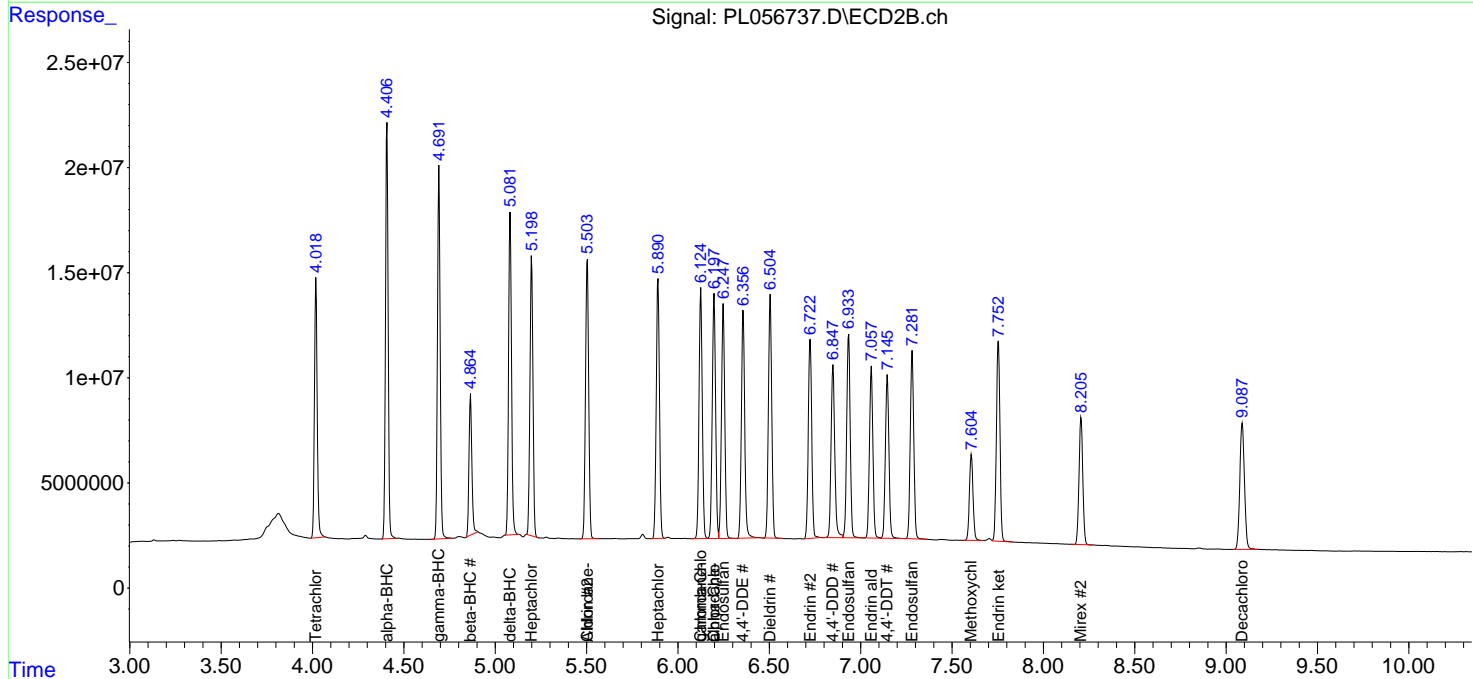
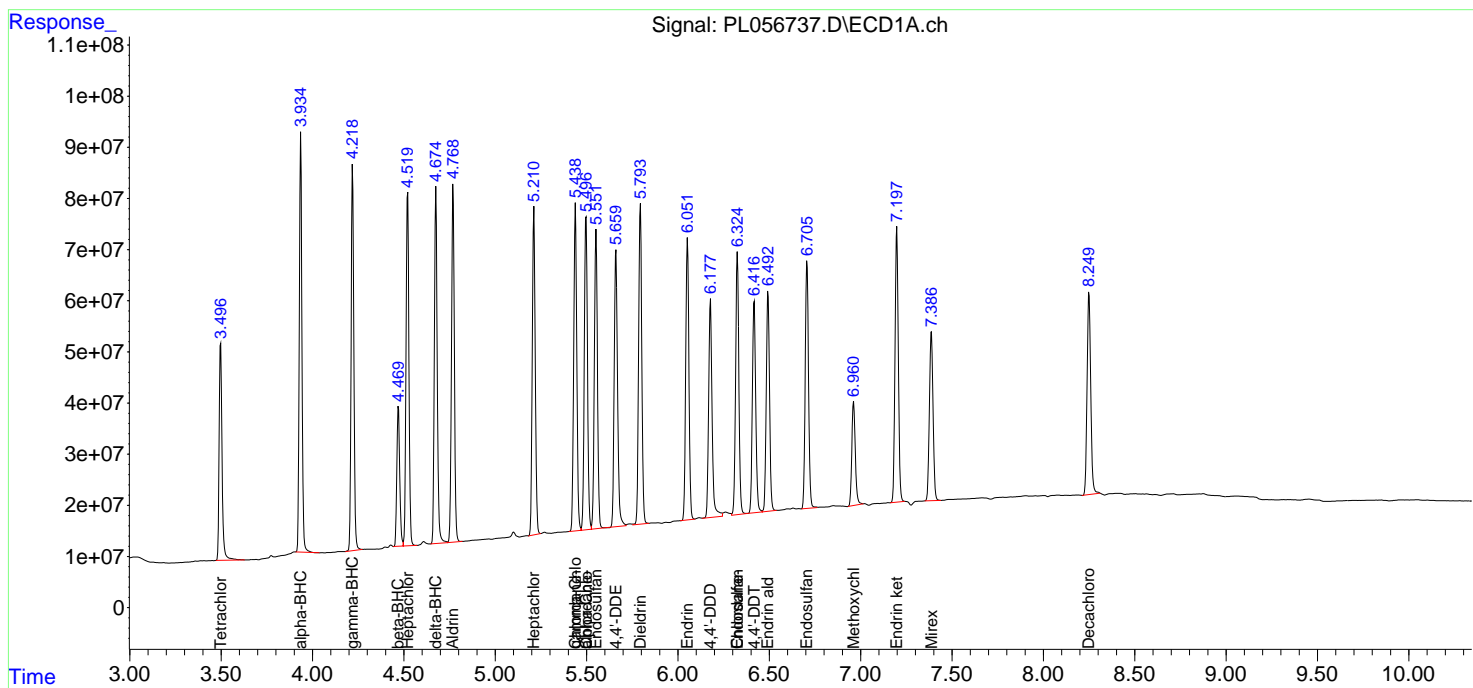
(f)=RT Delta > 1/2 Window (#)=Amounts differ by > 25% (m)=manual int.

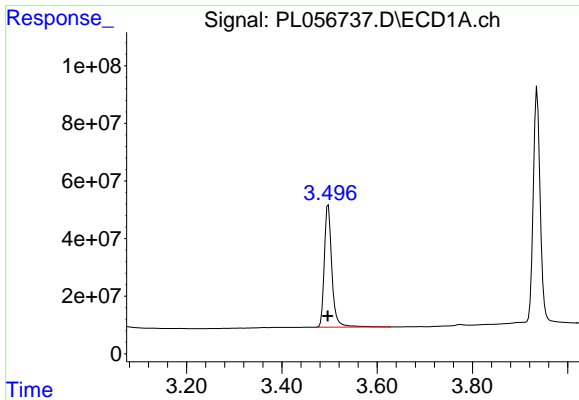
Data Path : Z:\pestpcbsrv\HPCHEM1\ECD_L\Data\PL022120\
 Data File : PL056737.D
 Signal(s) : Signal #1: ECD1A.ch Signal #2: ECD2B.ch
 Acq On : 21 Feb 2020 16:24
 Operator : AJ\MA
 Sample : PSTDCCC050
 Misc :
 ALS Vial : 4 Sample Multiplier: 1

Instrument :
 ECD_L
 ClientSampled :

Integration File signal 1: autoint1.e
 Integration File signal 2: autoint2.e
 Quant Time: Feb 21 22:26:44 2020
 Quant Method : Z:\pestpcbsrv\HPCHEM1\ECD_L\methods\PL021920.M
 Quant Title : GC Extractables
 QLast Update : Thu Feb 20 02:32:45 2020
 Response via : Initial Calibration
 Integrator: ChemStation

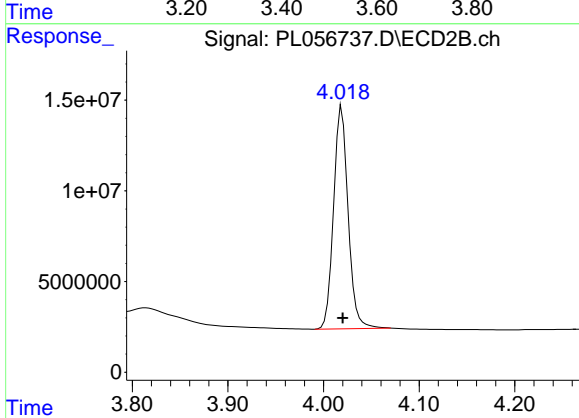
Volume Inj. : 1 µl
 Signal #1 Phase : ZB-MR2 Signal #2 Phase: ZB-MR1
 Signal #1 Info : 30M x 0.32mm x0.2 Signal #2 Info : 30M x 0.32mm x0.5µm



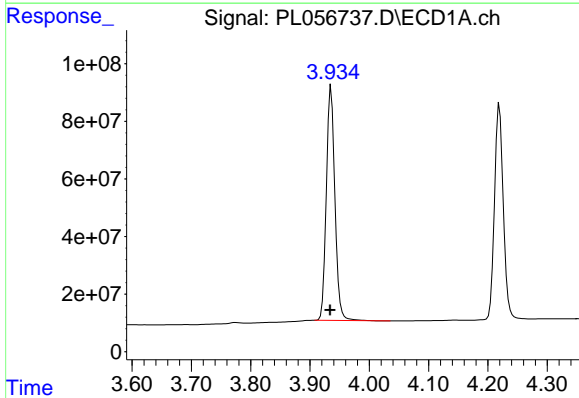


#1 Tetrachloro-m-xylene
 R.T.: 3.497 min
 Delta R.T.: 0.001 min
 Response: 466350802
 Conc: 53.93 ng/ml

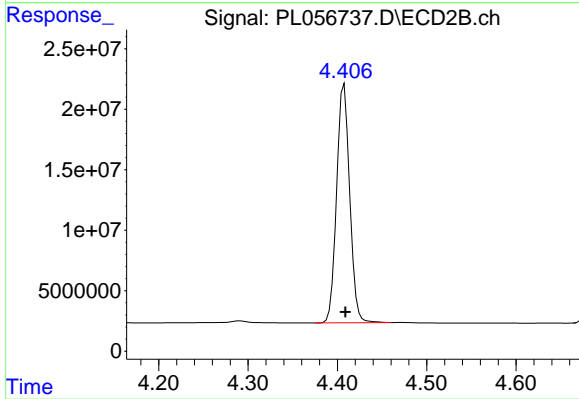
Instrument :
 ECD_L
 ClientSampleId :



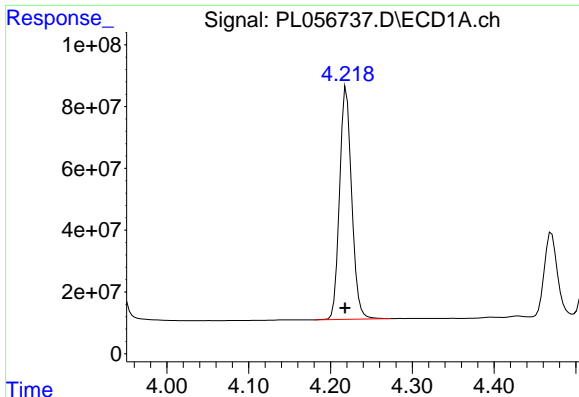
#1 Tetrachloro-m-xylene
 R.T.: 4.019 min
 Delta R.T.: 0.000 min
 Response: 129439718
 Conc: 51.96 ng/ml



#2 alpha-BHC
 R.T.: 3.936 min
 Delta R.T.: 0.002 min
 Response: 814760021
 Conc: 51.62 ng/ml

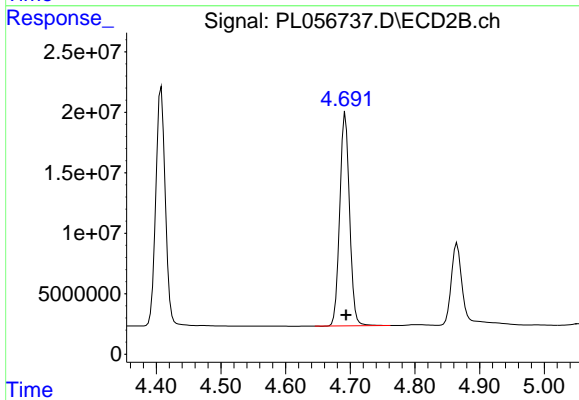


#2 alpha-BHC
 R.T.: 4.408 min
 Delta R.T.: -0.001 min
 Response: 200724090
 Conc: 53.36 ng/ml

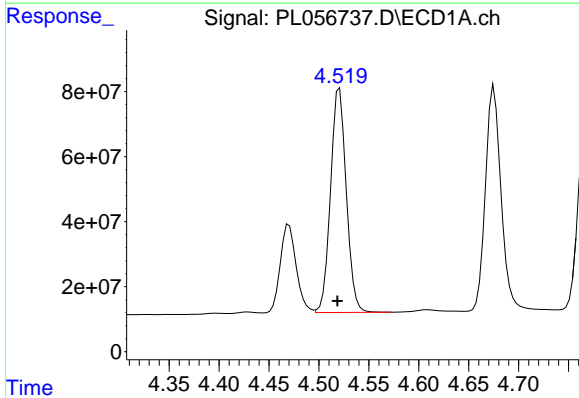


#3 gamma-BHC (Lindane)
 R.T.: 4.220 min
 Delta R.T.: 0.002 min
 Response: 771011742
 Conc: 51.68 ng/ml

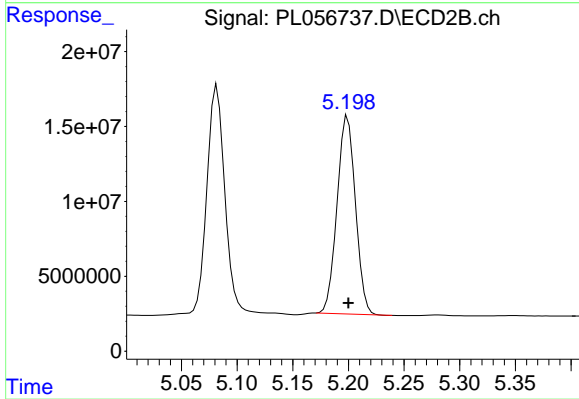
Instrument :
 ECD_L
 ClientSampled :



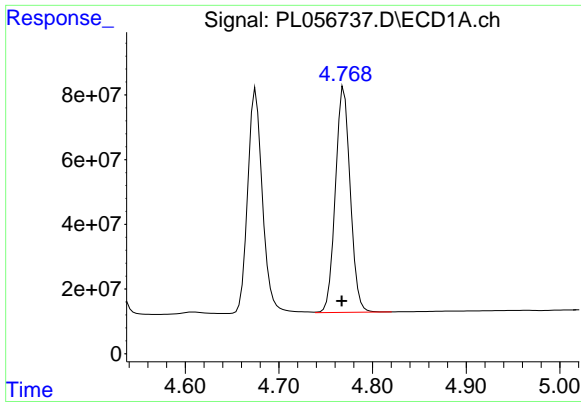
#3 gamma-BHC (Lindane)
 R.T.: 4.692 min
 Delta R.T.: -0.001 min
 Response: 185265276
 Conc: 53.80 ng/ml



#4 Heptachlor
 R.T.: 4.521 min
 Delta R.T.: 0.002 min
 Response: 756013981
 Conc: 51.27 ng/ml

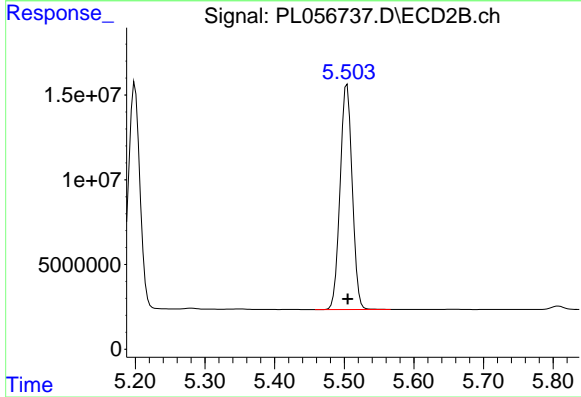


#4 Heptachlor
 R.T.: 5.199 min
 Delta R.T.: 0.000 min
 Response: 151870203
 Conc: 51.91 ng/ml

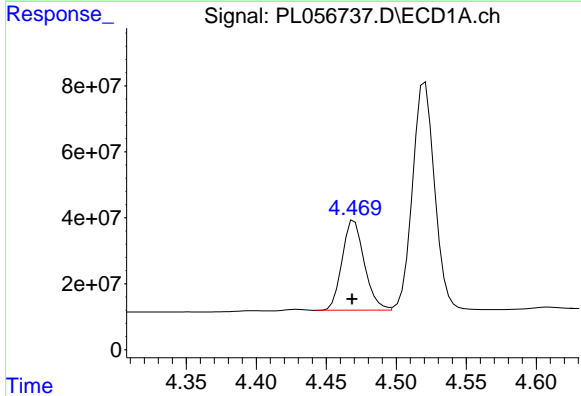


#5 Aldrin
 R.T.: 4.769 min
 Delta R.T.: 0.002 min
 Response: 766906544
 Conc: 51.37 ng/ml

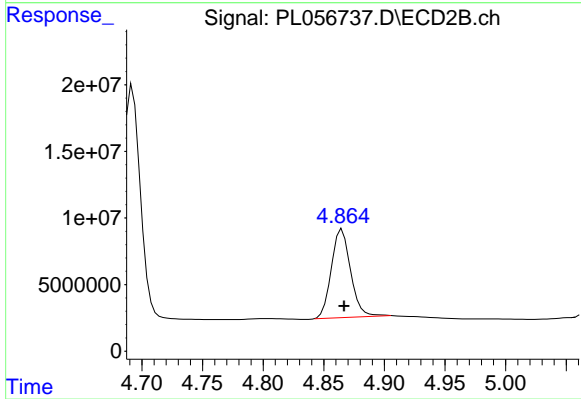
Instrument :
 ECD_L
 ClientSampleId :



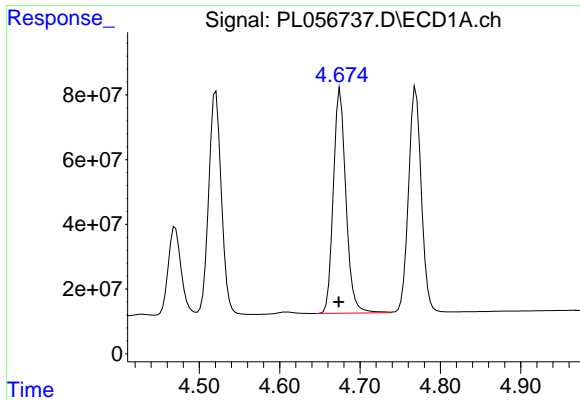
#5 Aldrin
 R.T.: 5.504 min
 Delta R.T.: 0.000 min
 Response: 160813617
 Conc: 51.38 ng/ml



#6 beta-BHC
 R.T.: 4.470 min
 Delta R.T.: 0.002 min
 Response: 301052922
 Conc: 51.95 ng/ml

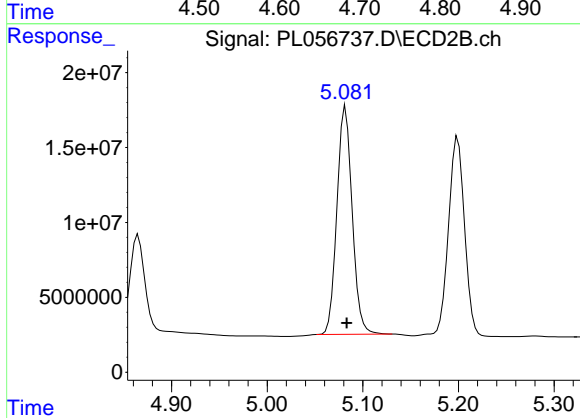


#6 beta-BHC
 R.T.: 4.865 min
 Delta R.T.: -0.001 min
 Response: 73836782
 Conc: 56.48 ng/ml

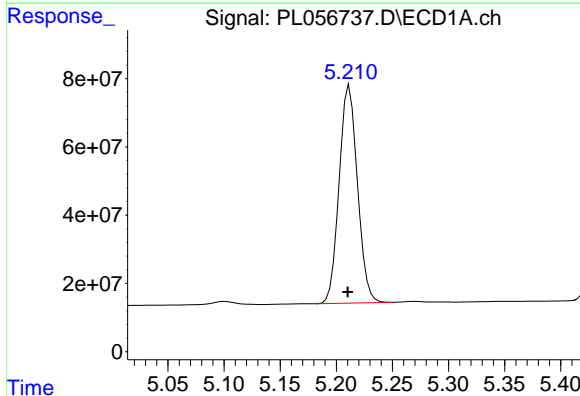


#7 delta-BHC
 R.T.: 4.675 min
 Delta R.T.: 0.002 min
 Response: 757254956
 Conc: 52.54 ng/ml

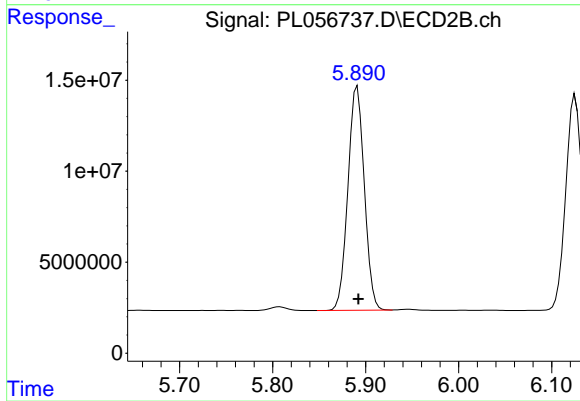
Instrument :
 ECD_L
 ClientSampled :



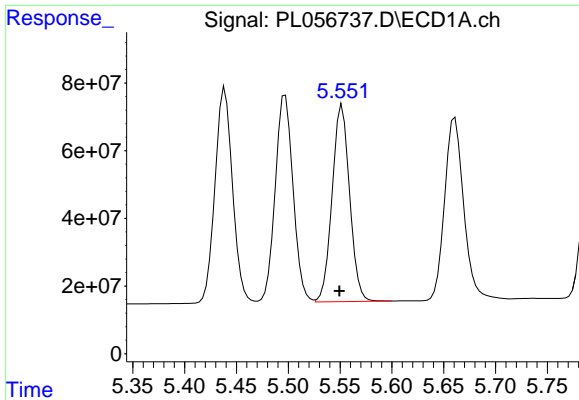
#7 delta-BHC
 R.T.: 5.082 min
 Delta R.T.: -0.001 min
 Response: 168890934
 Conc: 55.47 ng/ml



#8 Heptachlor epoxide
 R.T.: 5.212 min
 Delta R.T.: 0.002 min
 Response: 724006885
 Conc: 51.18 ng/ml

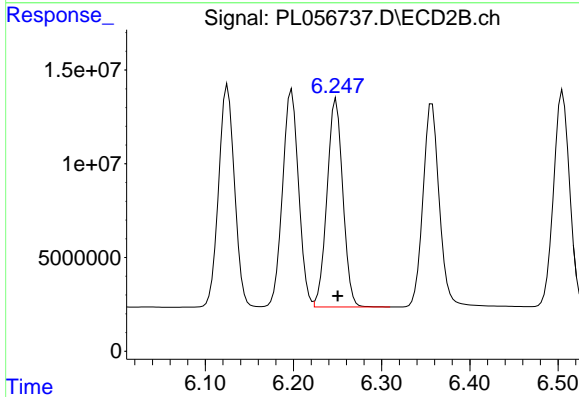


#8 Heptachlor epoxide
 R.T.: 5.891 min
 Delta R.T.: -0.001 min
 Response: 150742170
 Conc: 51.56 ng/ml

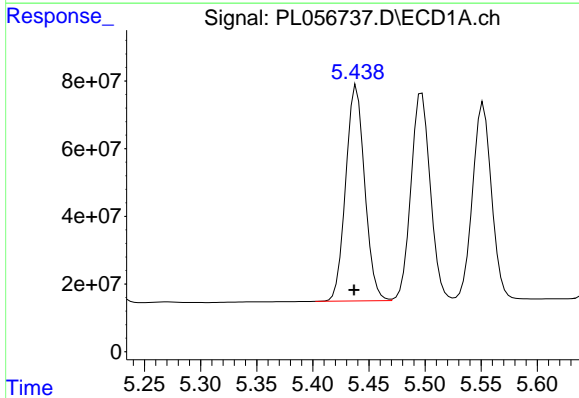


#9 Endosulfan I
 R.T.: 5.552 min
 Delta R.T.: 0.003 min
 Response: 681709725
 Conc: 51.00 ng/ml

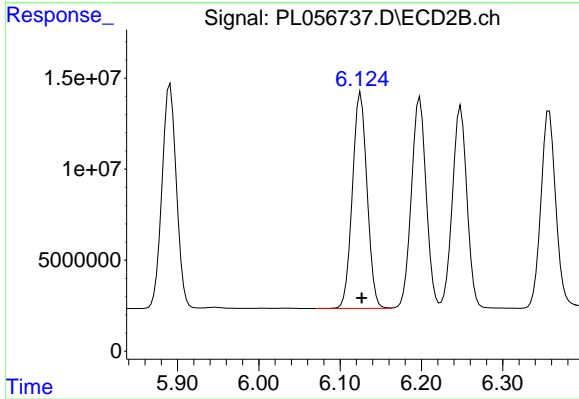
Instrument :
 ECD_L
 ClientSampled :



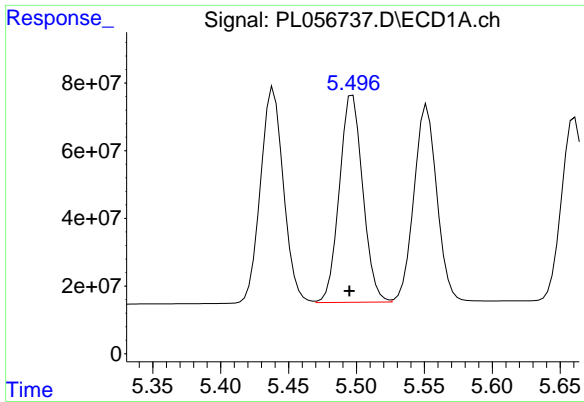
#9 Endosulfan I
 R.T.: 6.248 min
 Delta R.T.: -0.002 min
 Response: 138741434
 Conc: 51.36 ng/ml



#10 gamma-Chlordane
 R.T.: 5.439 min
 Delta R.T.: 0.002 min
 Response: 748362645
 Conc: 51.52 ng/ml



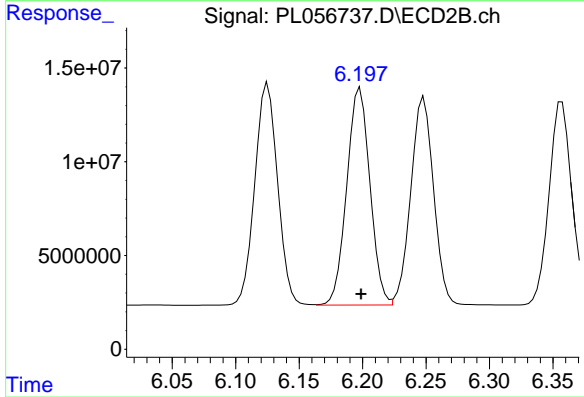
#10 gamma-Chlordane
 R.T.: 6.125 min
 Delta R.T.: -0.001 min
 Response: 148325014
 Conc: 51.71 ng/ml



#11 alpha-Chlordane

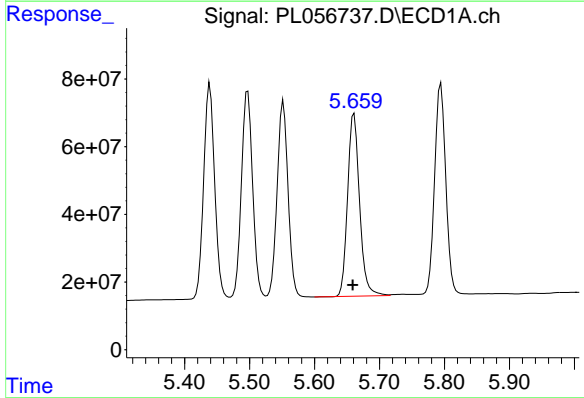
R.T.: 5.497 min
 Delta R.T.: 0.002 min
 Response: 734274049
 Conc: 50.85 ng/ml

Instrument :
 ECD_L
 ClientSampled :



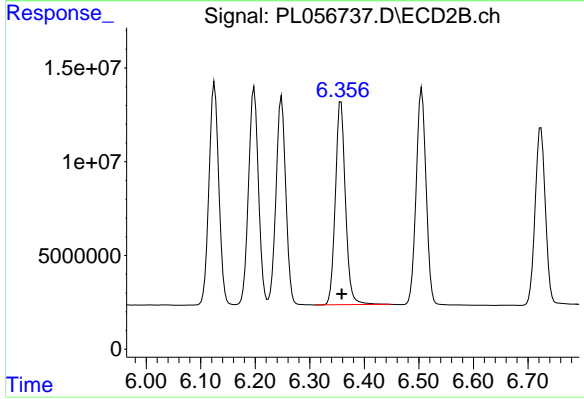
#11 alpha-Chlordane

R.T.: 6.198 min
 Delta R.T.: 0.000 min
 Response: 147286965
 Conc: 51.76 ng/ml



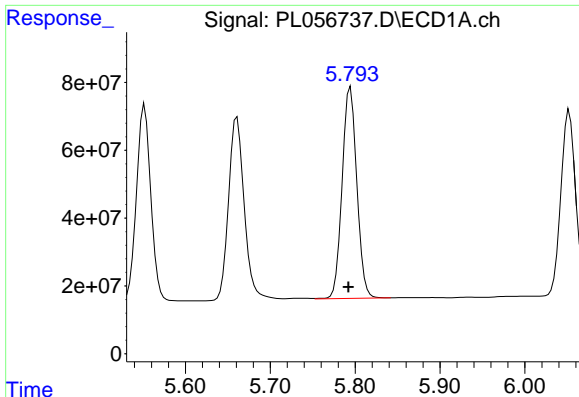
#12 4,4'-DDE

R.T.: 5.661 min
 Delta R.T.: 0.002 min
 Response: 691574388
 Conc: 49.17 ng/ml



#12 4,4'-DDE

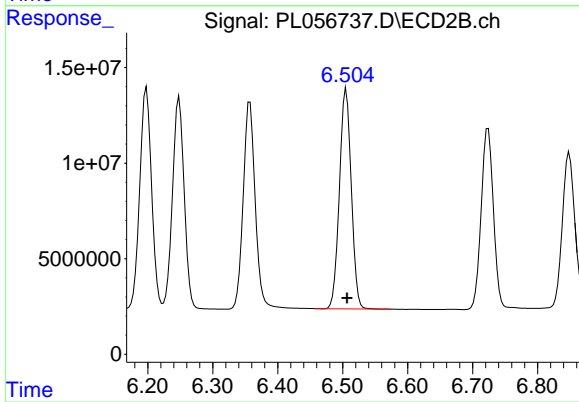
R.T.: 6.357 min
 Delta R.T.: -0.001 min
 Response: 139431778
 Conc: 50.63 ng/ml



#13 Dieldrin

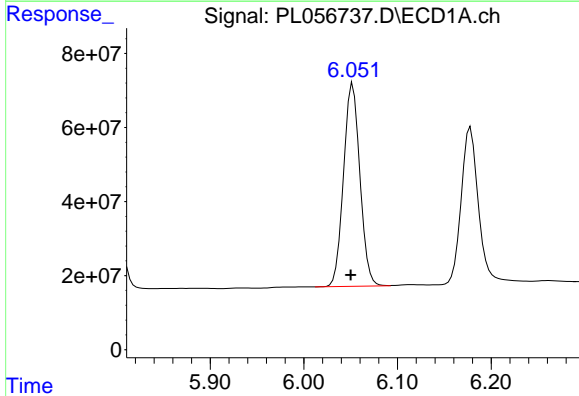
R.T.: 5.794 min
 Delta R.T.: 0.002 min
 Response: 749104627
 Conc: 50.26 ng/ml

Instrument :
 ECD_L
 ClientSampled :



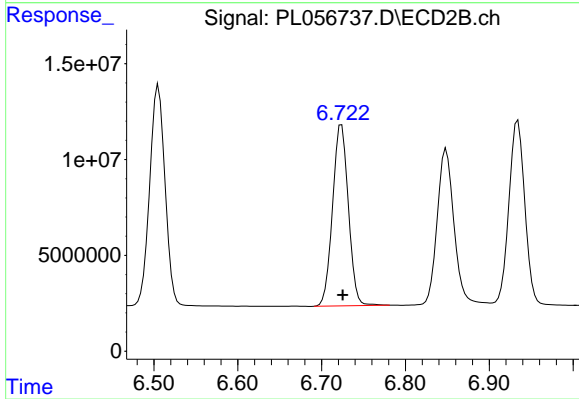
#13 Dieldrin

R.T.: 6.505 min
 Delta R.T.: -0.001 min
 Response: 145974074
 Conc: 51.07 ng/ml



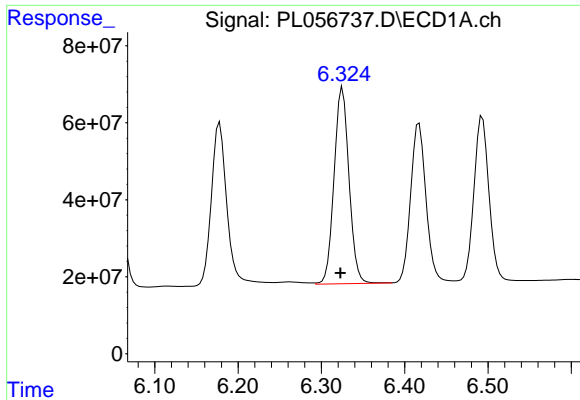
#14 Endrin

R.T.: 6.052 min
 Delta R.T.: 0.002 min
 Response: 665199807
 Conc: 49.28 ng/ml



#14 Endrin

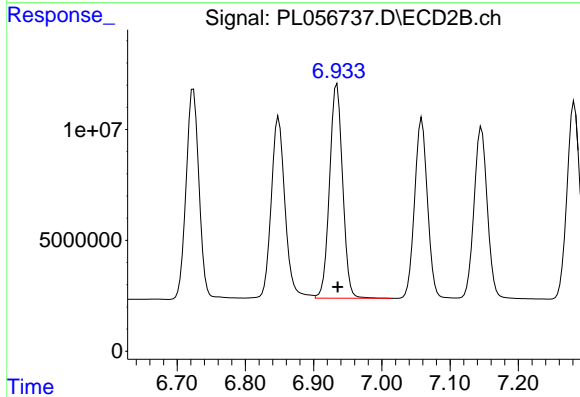
R.T.: 6.724 min
 Delta R.T.: -0.001 min
 Response: 123813037
 Conc: 50.26 ng/ml



#15 Endosulfan II

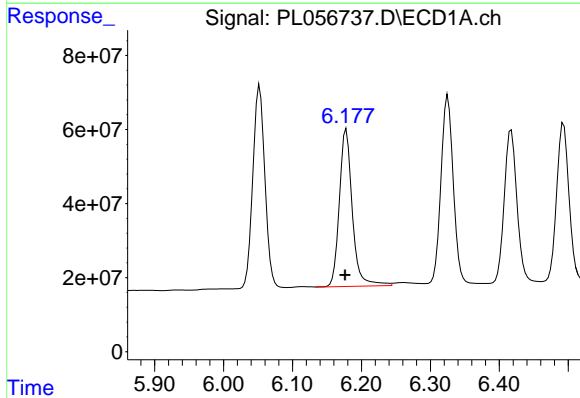
R.T.: 6.325 min
Delta R.T.: 0.003 min
Response: 635124111
Conc: 51.14 ng/ml

Instrument :
ECD_L
ClientSampleId :



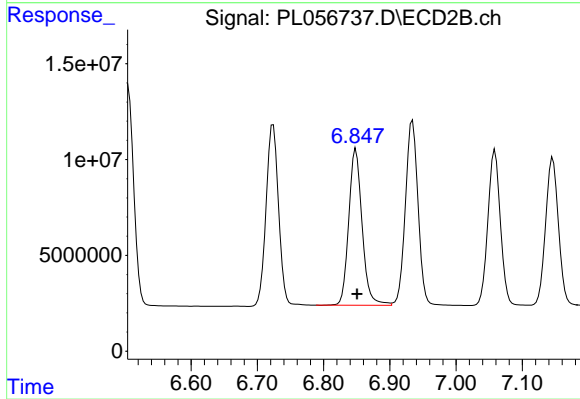
#15 Endosulfan II

R.T.: 6.934 min
Delta R.T.: -0.001 min
Response: 128290760
Conc: 49.67 ng/ml



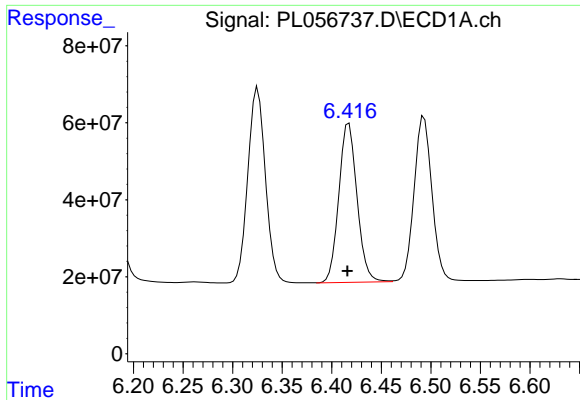
#16 4,4'-DDD

R.T.: 6.178 min
Delta R.T.: 0.002 min
Response: 556946369
Conc: 49.79 ng/ml



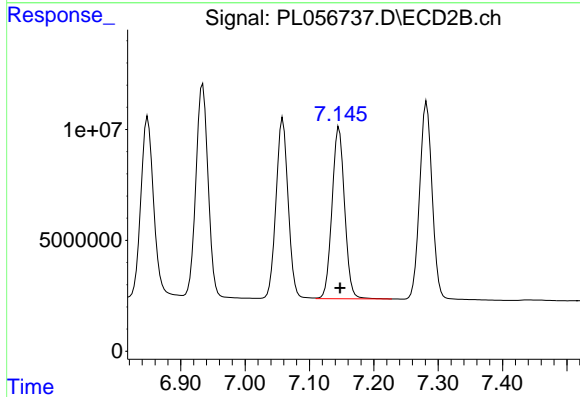
#16 4,4'-DDD

R.T.: 6.849 min
Delta R.T.: -0.001 min
Response: 114513818
Conc: 49.73 ng/ml

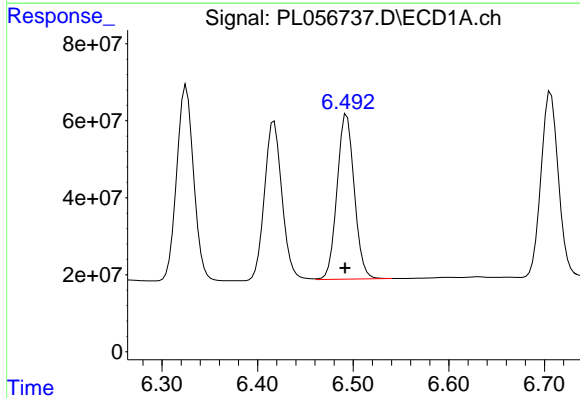


#17 4,4'-DDT
R.T.: 6.417 min
Delta R.T.: 0.002 min
Response: 529271521
Conc: 48.60 ng/ml

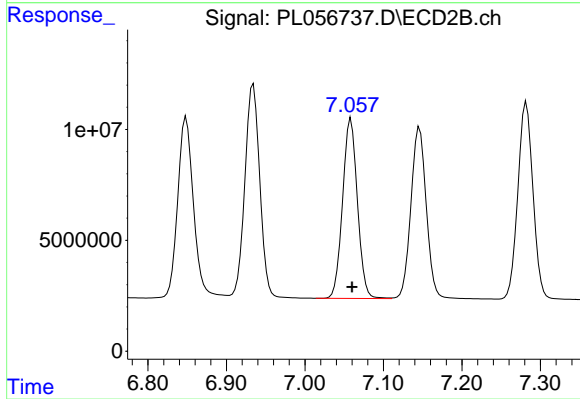
Instrument :
ECD_L
ClientSampled :



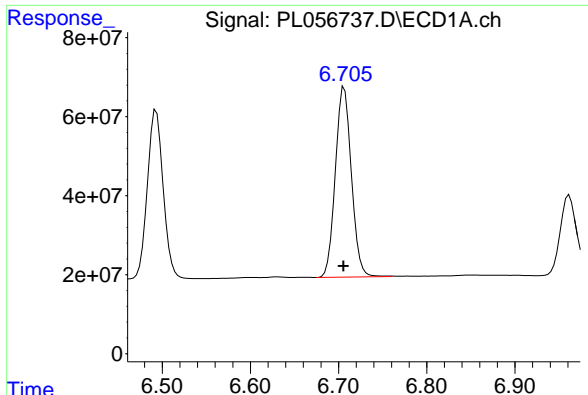
#17 4,4'-DDT
R.T.: 7.146 min
Delta R.T.: -0.002 min
Response: 105130342
Conc: 50.53 ng/ml



#18 Endrin aldehyde
R.T.: 6.493 min
Delta R.T.: 0.002 min
Response: 538612297
Conc: 49.76 ng/ml

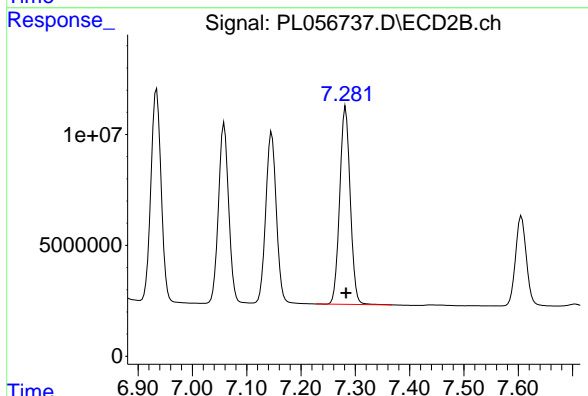


#18 Endrin aldehyde
R.T.: 7.059 min
Delta R.T.: -0.001 min
Response: 106388481
Conc: 50.71 ng/ml

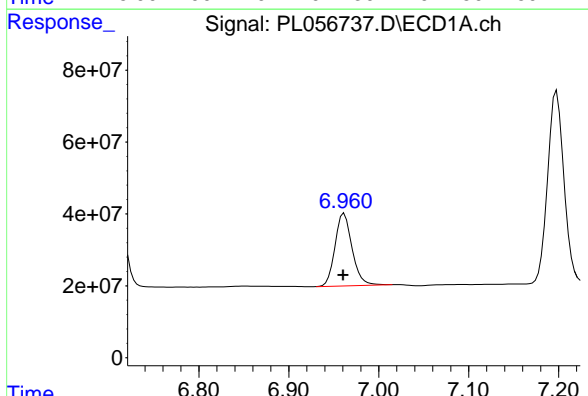


#19 Endosulfan Sulfate
 R.T.: 6.706 min
 Delta R.T.: 0.001 min
 Response: 609297142
 Conc: 51.39 ng/ml

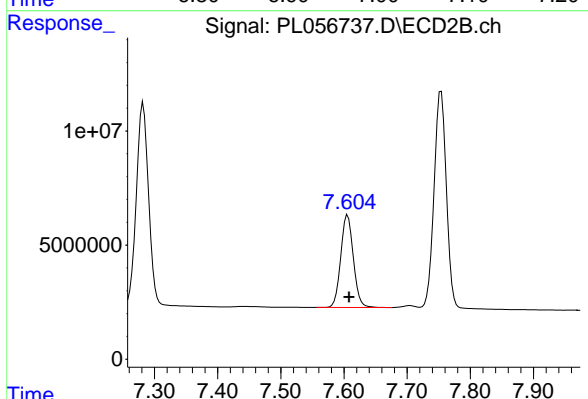
Instrument :
 ECD_L
 ClientSampled :



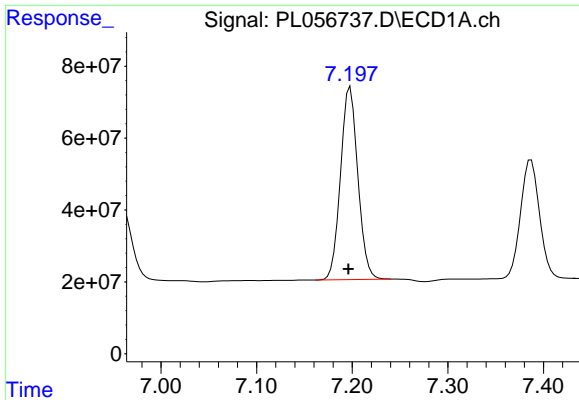
#19 Endosulfan Sulfate
 R.T.: 7.282 min
 Delta R.T.: -0.001 min
 Response: 119712166
 Conc: 50.37 ng/ml



#20 Methoxychlor
 R.T.: 6.962 min
 Delta R.T.: 0.001 min
 Response: 267782092
 Conc: 50.50 ng/ml



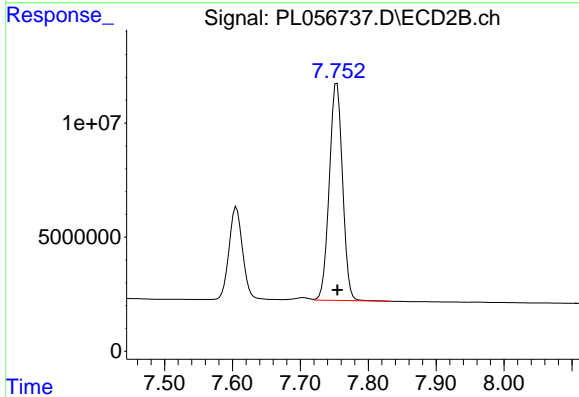
#20 Methoxychlor
 R.T.: 7.606 min
 Delta R.T.: -0.002 min
 Response: 56180545
 Conc: 50.76 ng/ml



#21 Endrin ketone

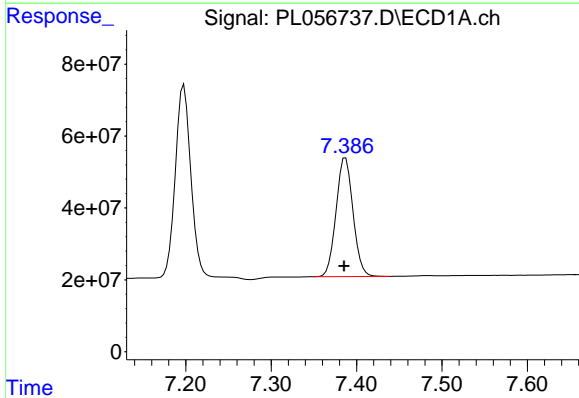
R.T.: 7.198 min
 Delta R.T.: 0.002 min
 Response: 676702316
 Conc: 50.76 ng/ml

Instrument :
 ECD_L
 ClientSampled :



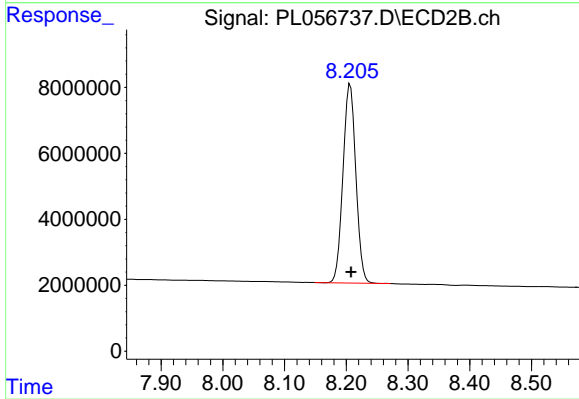
#21 Endrin ketone

R.T.: 7.754 min
 Delta R.T.: 0.000 min
 Response: 129031536
 Conc: 51.09 ng/ml



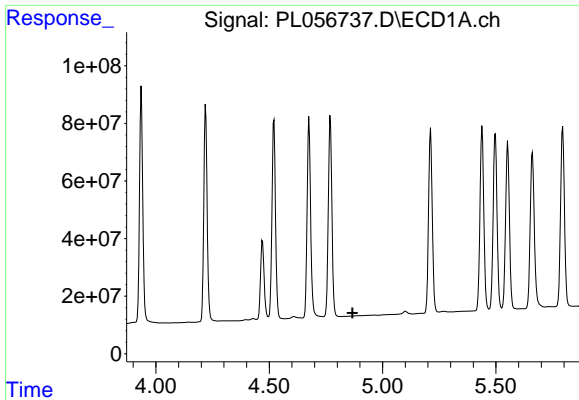
#22 Mirex

R.T.: 7.387 min
 Delta R.T.: 0.002 min
 Response: 456368221
 Conc: 54.38 ng/ml



#22 Mirex

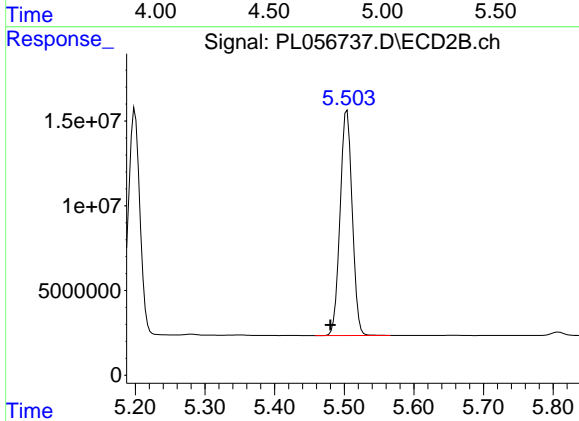
R.T.: 8.206 min
 Delta R.T.: -0.001 min
 Response: 87457743
 Conc: 52.06 ng/ml



#24 Chlordane-2

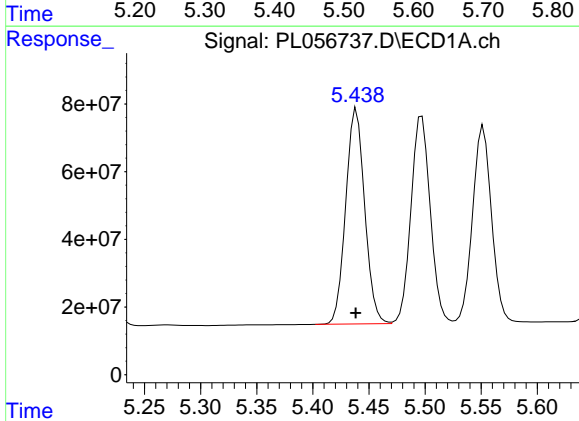
R.T.: 0.000 min
 Exp R.T.: 4.868 min
 Response: 0
 Conc: N.D.

Instrument :
 ECD_L
 ClientSampleId :



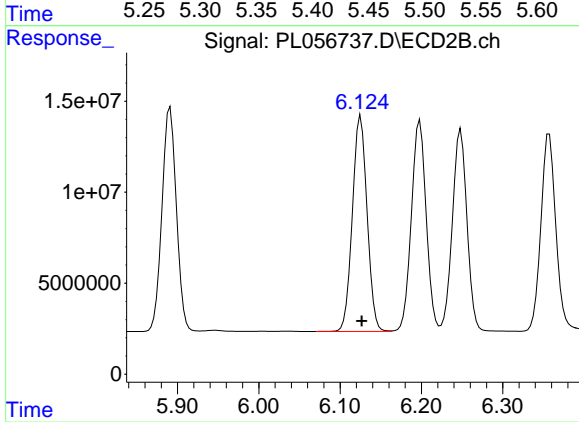
#24 Chlordane-2

R.T.: 5.504 min
 Delta R.T.: 0.024 min
 Response: 160813617
 Conc: 1629.61 ng/ml



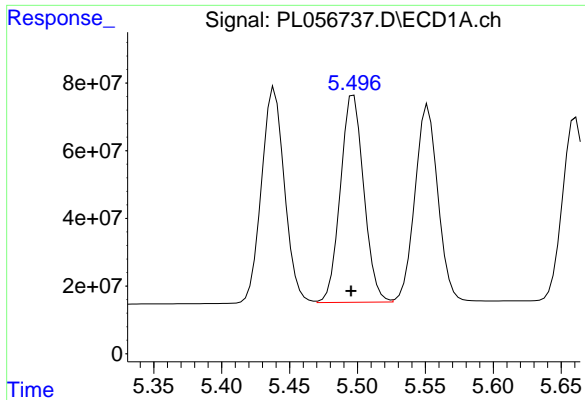
#25 Chlordane-3

R.T.: 5.439 min
 Delta R.T.: 0.000 min
 Response: 748362645
 Conc: 594.95 ng/ml



#25 Chlordane-3

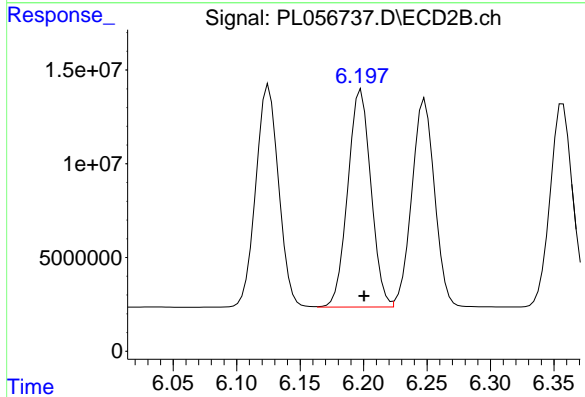
R.T.: 6.125 min
 Delta R.T.: -0.001 min
 Response: 148325014
 Conc: 401.63 ng/ml



#26 Chlordane-4

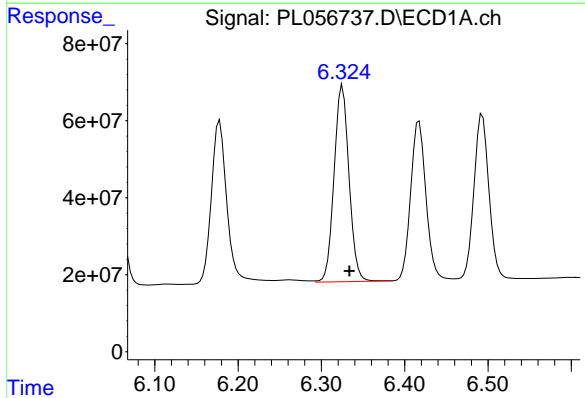
R.T.: 5.497 min
 Delta R.T.: 0.002 min
 Response: 734274049
 Conc: 683.54 ng/ml

Instrument :
 ECD_L
 ClientSampled :



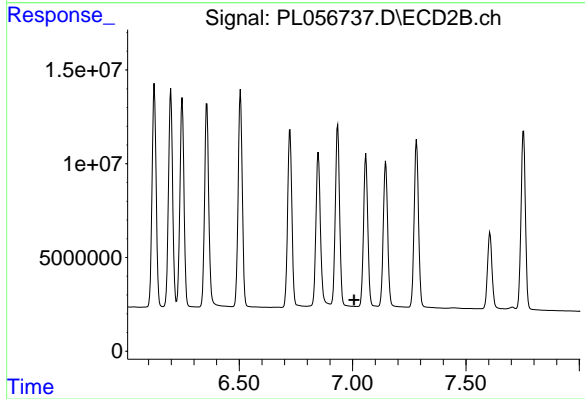
#26 Chlordane-4

R.T.: 6.198 min
 Delta R.T.: -0.002 min
 Response: 147286965
 Conc: 343.13 ng/ml



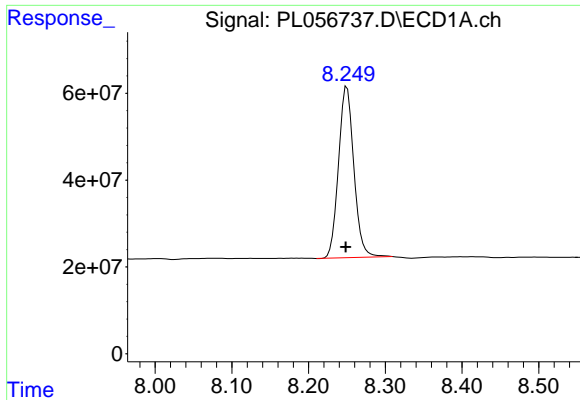
#27 Chlordane-5

R.T.: 6.325 min
 Delta R.T.: -0.008 min
 Response: 635124111
 Conc: 1939.68 ng/ml



#27 Chlordane-5

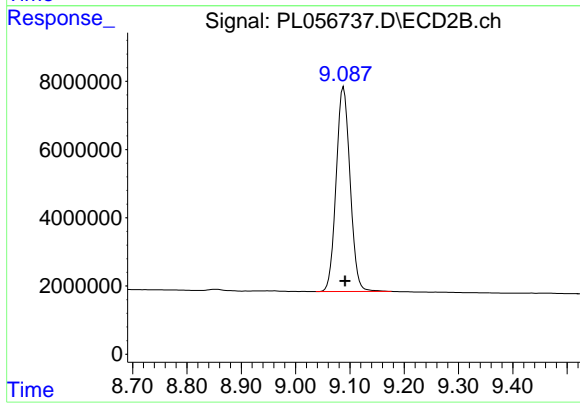
R.T.: 0.000 min
 Exp R.T.: 7.007 min
 Response: 0
 Conc: N.D.



#28 Decachlorobiphenyl

R.T.: 8.250 min
Delta R.T.: 0.002 min
Response: 549875529
Conc: 46.23 ng/ml

Instrument :
ECD_L
ClientSampleId :



#28 Decachlorobiphenyl

R.T.: 9.088 min
Delta R.T.: -0.003 min
Response: 106612917
Conc: 50.74 ng/ml