

Data Path : Z:\pestpcbsrv\HPCHEM1\ECD_L\Data\PL022120\
 Data File : PL056768.D
 Signal(s) : Signal #1: ECD1A.ch Signal #2: ECD2B.ch
 Acq On : 22 Feb 2020 00:11
 Operator : AJ\MA
 Sample : L1635-09
 Misc :
 ALS Vial : 41 Sample Multiplier: 1

Instrument :
 ECD_L
 ClientSampleId :

Integration File signal 1: autoint1.e
 Integration File signal 2: autoint2.e
 Quant Time: Feb 22 04:36:53 2020
 Quant Method : Z:\pestpcbsrv\HPCHEM1\ECD_L\methods\PL021920.M
 Quant Title : GC Extractables
 QLast Update : Thu Feb 20 02:32:45 2020
 Response via : Initial Calibration
 Integrator: ChemStation

Volume Inj. : 1 µl
 Signal #1 Phase : ZB-MR2 Signal #2 Phase: ZB-MR1
 Signal #1 Info : 30M x 0.32mm x0.2 Signal #2 Info : 30M x 0.32mm x0.5µm

Compound	RT#1	RT#2	Resp#1	Resp#2	ng/ml	ng/ml

System Monitoring Compounds						
1) SA Tetrachlo...	3.498	4.019	230.0E6	58691003	26.596	23.561
28) SA Decachlor...	8.250	9.091	203.4E6	42897395	17.100	20.415
Target Compounds						
12) B 4,4'-DDE	5.662	0.000	11981691	0	0.852	N.D. #
13) MA Dieldrin	5.801	0.000	15646137	0	1.050	N.D. #
15) B Endosulfa...	6.338f	0.000	13016215	0	1.048	N.D. #
17) MA 4,4'-DDT	6.416	0.000	18545530	0	1.703	N.D. #
18) B Endrin al...	6.463f	0.000	6938416	0	0.641	N.D. #
19) B Endosulfa...	6.682f	0.000	6599366	0	0.557	N.D. #
27) Chlordane-5	6.338	0.000	13016215	0	39.752	N.D. #

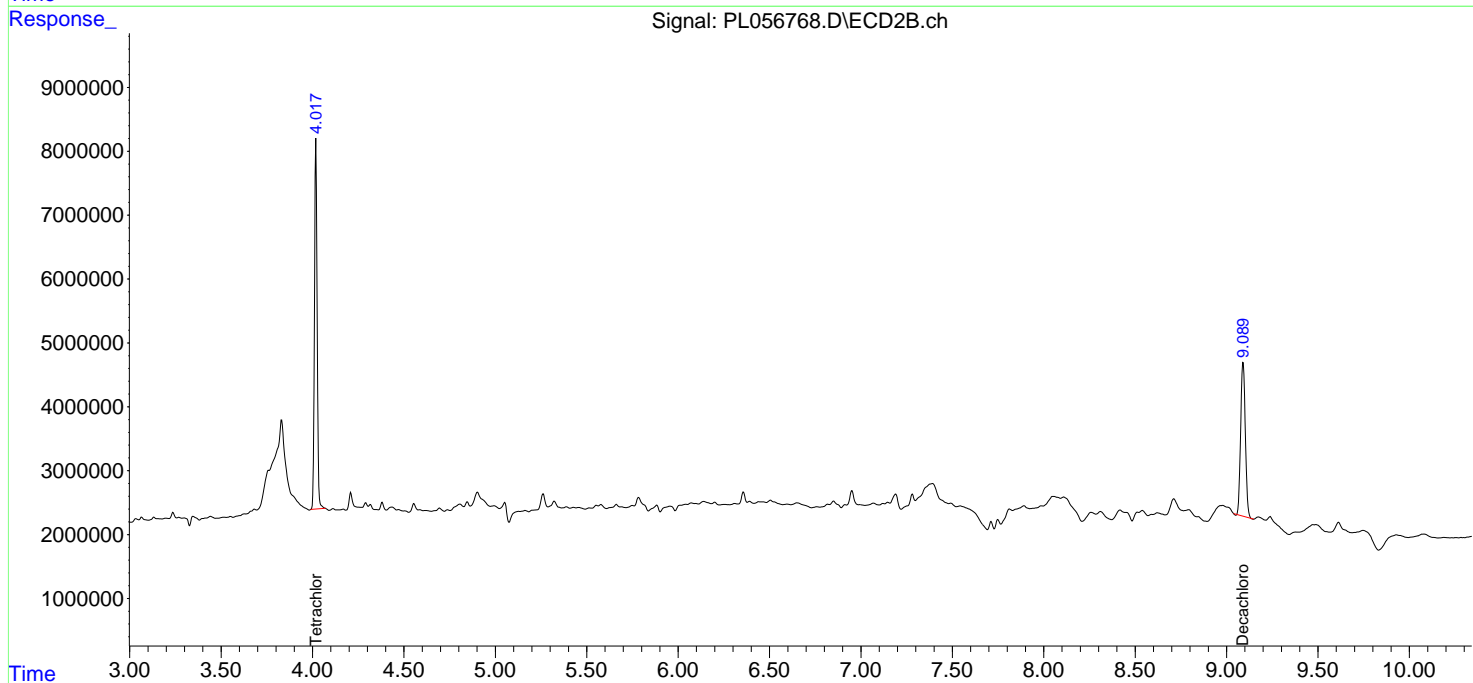
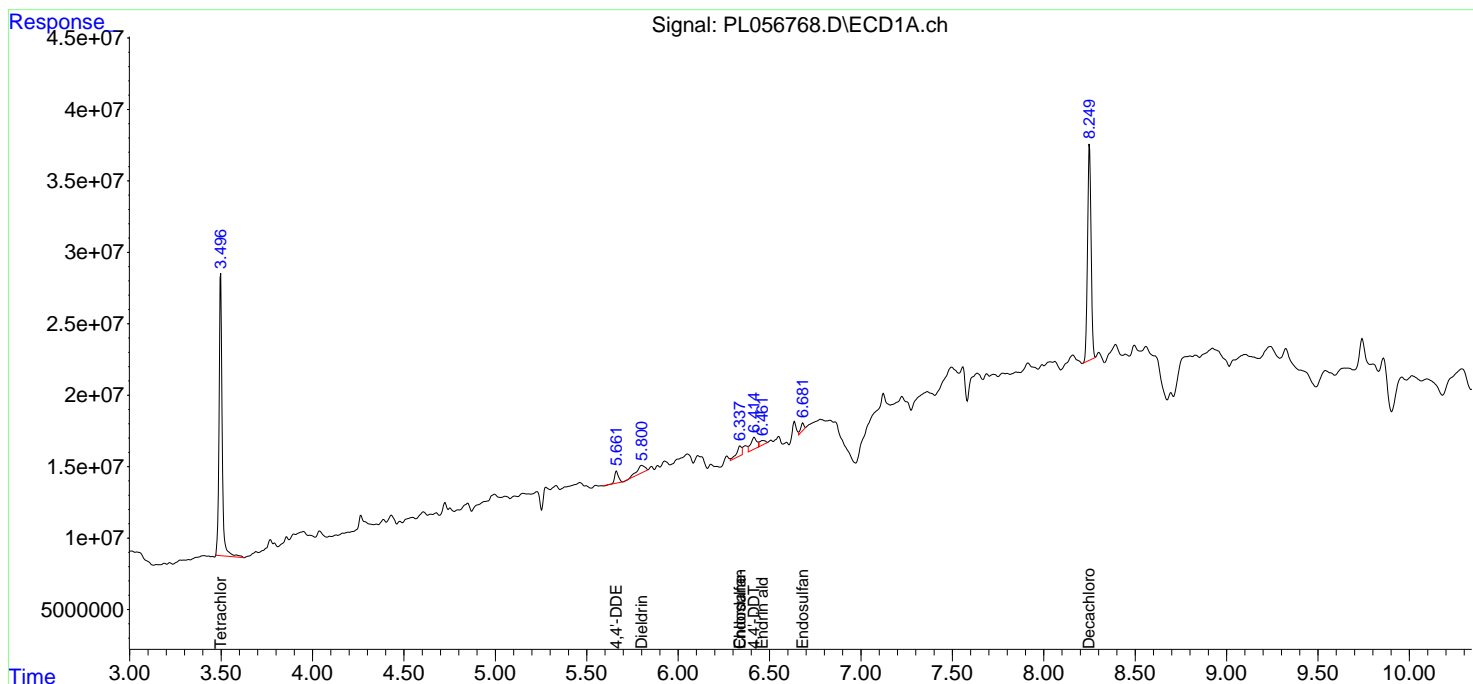
(f)=RT Delta > 1/2 Window (#)=Amounts differ by > 25% (m)=manual int.

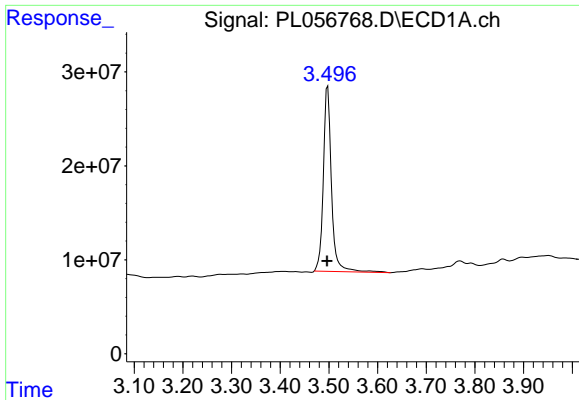
Data Path : Z:\pestpcbsrv\HPCHEM1\ECD_L\Data\PL022120\
 Data File : PL056768.D
 Signal(s) : Signal #1: ECD1A.ch Signal #2: ECD2B.ch
 Acq On : 22 Feb 2020 00:11
 Operator : AJ\MA
 Sample : L1635-09
 Misc :
 ALS Vial : 41 Sample Multiplier: 1

Instrument :
 ECD_L
 ClientSampled :

Integration File signal 1: autoint1.e
 Integration File signal 2: autoint2.e
 Quant Time: Feb 22 04:36:53 2020
 Quant Method : Z:\pestpcbsrv\HPCHEM1\ECD_L\methods\PL021920.M
 Quant Title : GC Extractables
 QLast Update : Thu Feb 20 02:32:45 2020
 Response via : Initial Calibration
 Integrator: ChemStation

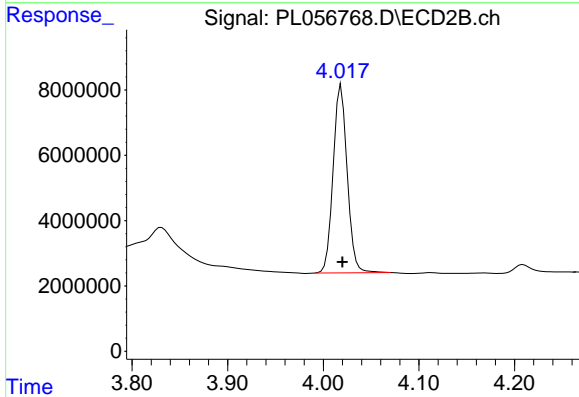
Volume Inj. : 1 µl
 Signal #1 Phase : ZB-MR2 Signal #2 Phase: ZB-MR1
 Signal #1 Info : 30M x 0.32mm x0.2 Signal #2 Info : 30M x 0.32mm x0.5µm



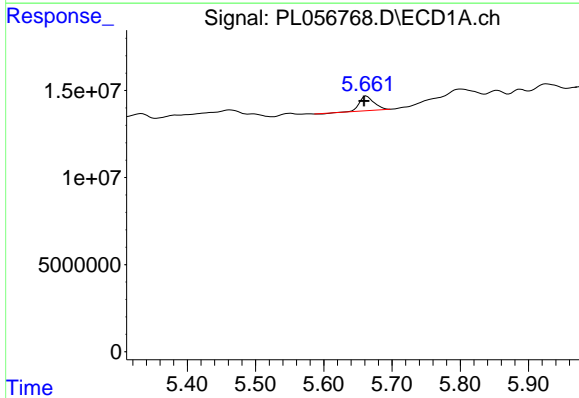


#1 Tetrachloro-m-xylene
 R.T.: 3.498 min
 Delta R.T.: 0.002 min
 Response: 229993199
 Conc: 26.60 ng/ml

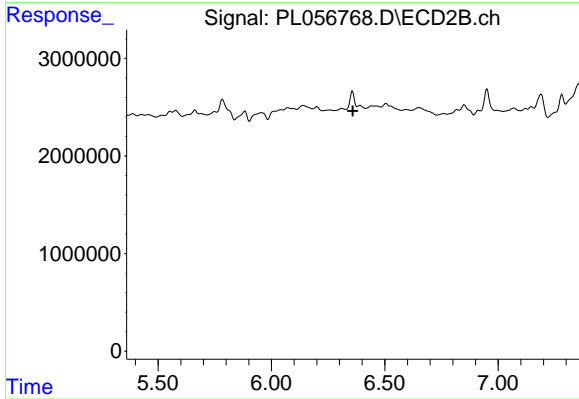
Instrument :
 ECD_L
 ClientSampled :



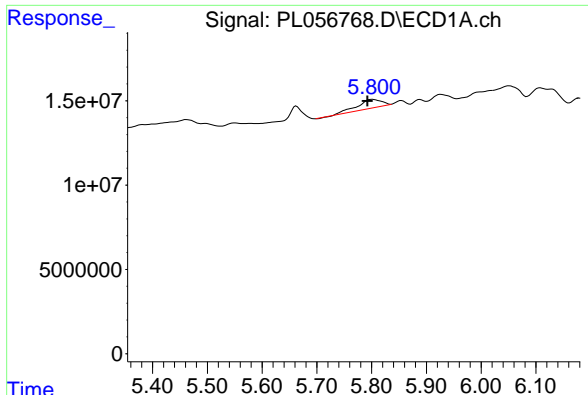
#1 Tetrachloro-m-xylene
 R.T.: 4.019 min
 Delta R.T.: -0.001 min
 Response: 58691003
 Conc: 23.56 ng/ml



#12 4,4'-DDE
 R.T.: 5.662 min
 Delta R.T.: 0.003 min
 Response: 11981691
 Conc: 0.85 ng/ml

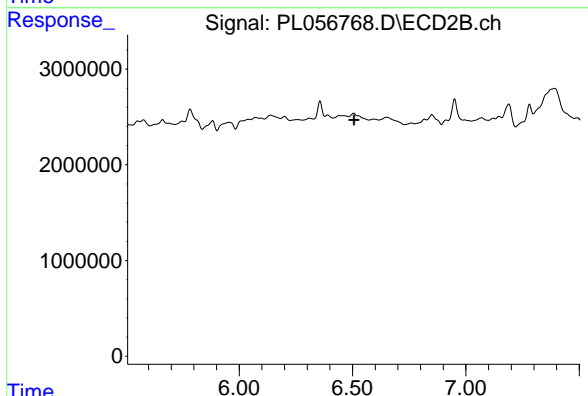


#12 4,4'-DDE
 R.T.: 0.000 min
 Exp R.T.: 6.358 min
 Response: 0
 Conc: N.D.

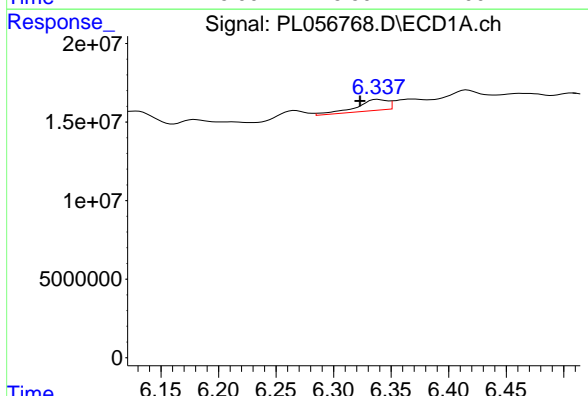


#13 Dieldrin
 R.T.: 5.801 min
 Delta R.T.: 0.009 min
 Response: 15646137
 Conc: 1.05 ng/ml

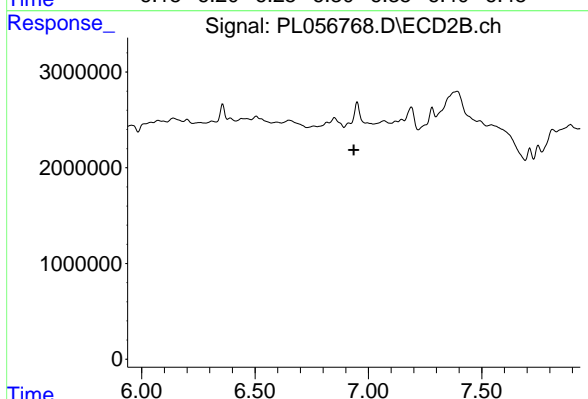
Instrument :
 ECD_L
 ClientSampled :



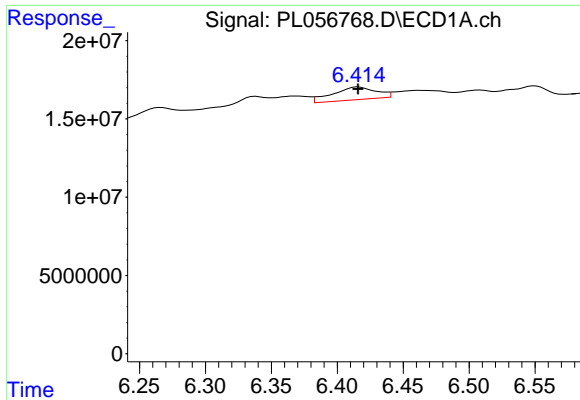
#13 Dieldrin
 R.T.: 0.000 min
 Exp R.T. : 6.506 min
 Response: 0
 Conc: N.D.



#15 Endosulfan II
 R.T.: 6.338 min
 Delta R.T.: 0.015 min
 Response: 13016215
 Conc: 1.05 ng/ml



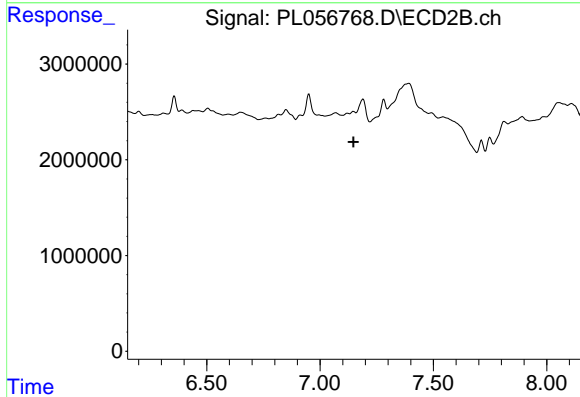
#15 Endosulfan II
 R.T.: 0.000 min
 Exp R.T. : 6.936 min
 Response: 0
 Conc: N.D.



#17 4,4'-DDT

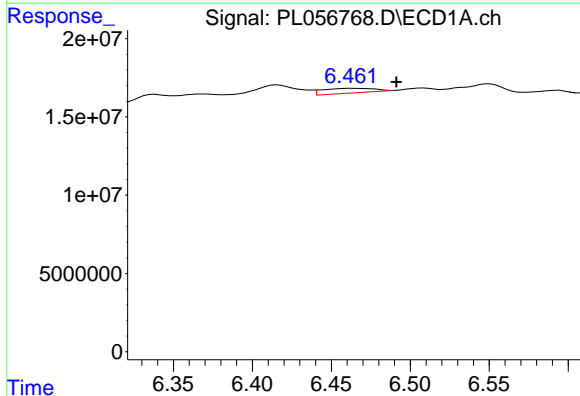
R.T.: 6.416 min
 Delta R.T.: 0.000 min
 Response: 18545530
 Conc: 1.70 ng/ml

Instrument :
 ECD_L
 ClientSampled :



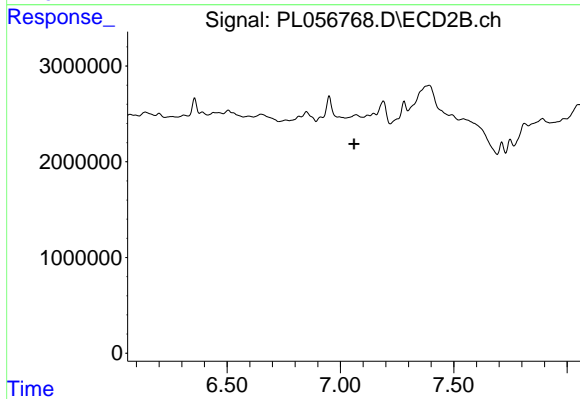
#17 4,4'-DDT

R.T.: 0.000 min
 Exp R.T. : 7.148 min
 Response: 0
 Conc: N.D.



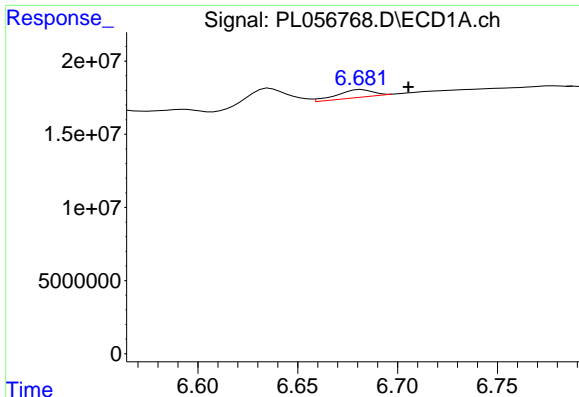
#18 Endrin aldehyde

R.T.: 6.463 min
 Delta R.T.: -0.028 min
 Response: 6938416
 Conc: 0.64 ng/ml



#18 Endrin aldehyde

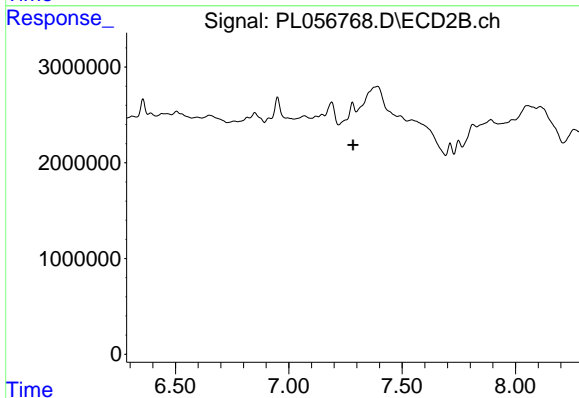
R.T.: 0.000 min
 Exp R.T. : 7.060 min
 Response: 0
 Conc: N.D.



#19 Endosulfan Sulfate

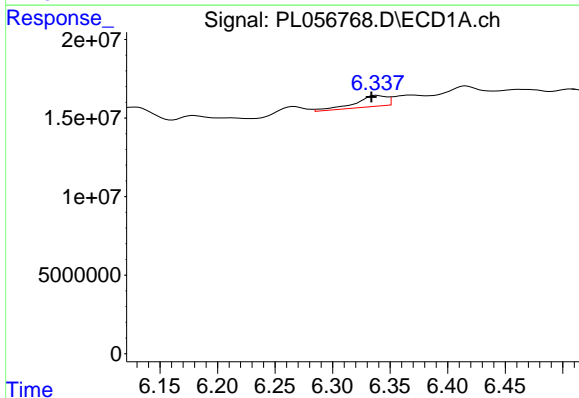
R.T.: 6.682 min
 Delta R.T.: -0.023 min
 Response: 6599366
 Conc: 0.56 ng/ml

Instrument :
 ECD_L
 ClientSampled :



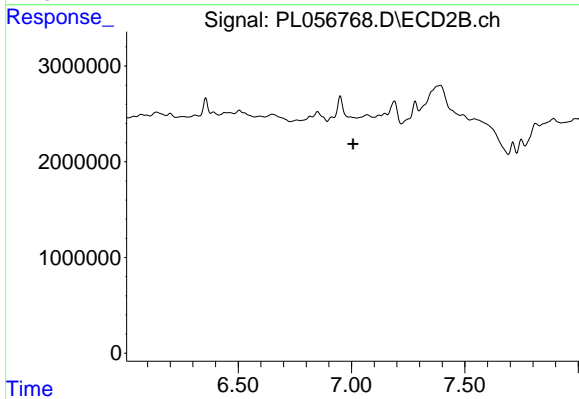
#19 Endosulfan Sulfate

R.T.: 0.000 min
 Exp R.T. : 7.283 min
 Response: 0
 Conc: N.D.



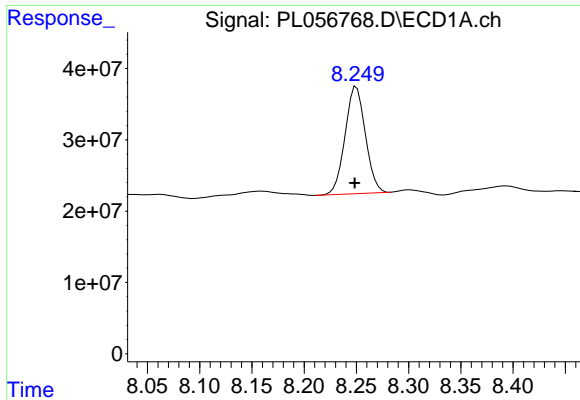
#27 Chlordane-5

R.T.: 6.338 min
 Delta R.T.: 0.004 min
 Response: 13016215
 Conc: 39.75 ng/ml



#27 Chlordane-5

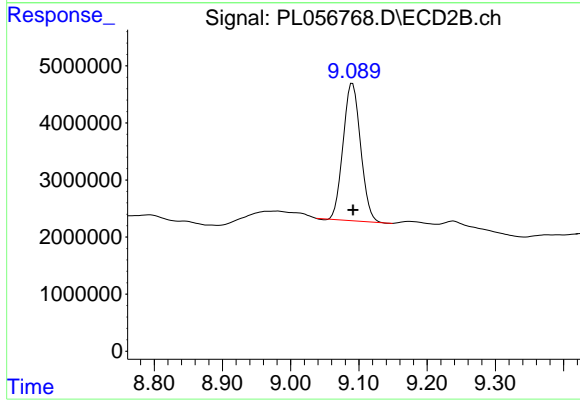
R.T.: 0.000 min
 Exp R.T. : 7.007 min
 Response: 0
 Conc: N.D.



#28 Decachlorobiphenyl

R.T.: 8.250 min
Delta R.T.: 0.002 min
Response: 203407970
Conc: 17.10 ng/ml

Instrument :
ECD_L
ClientSampleId :



#28 Decachlorobiphenyl

R.T.: 9.091 min
Delta R.T.: 0.000 min
Response: 42897395
Conc: 20.41 ng/ml