

Data Path : Z:\pestpcbsrv\HPCHEM1\ECD\_L\Data\PL022121\  
 Data File : PL064857.D  
 Signal(s) : Signal #1: ECD1A.ch Signal #2: ECD2B.ch  
 Acq On : 21 Feb 2021 16:42  
 Operator : AR\AJ  
 Sample : PB134732BS  
 Misc :  
 ALS Vial : 21 Sample Multiplier: 1

Instrument :  
 ECD\_L  
 ClientSampleId :  
 PLCS32

Integration File signal 1: autoint1.e  
 Integration File signal 2: autoint2.e  
 Quant Time: Feb 22 04:21:14 2021  
 Quant Method : Z:\pestpcbsrv\HPCHEM1\ECD\_L\methods\PL022121CLP.M  
 Quant Title : GC Extractables  
 QLast Update : Mon Feb 22 03:50:14 2021  
 Response via : Initial Calibration  
 Integrator: ChemStation

Volume Inj. : 1 µl  
 Signal #1 Phase : ZB-MR2 Signal #2 Phase: ZB-MR1  
 Signal #1 Info : 30M x 0.32mm x0.2 Signal #2 Info : 30M x 0.32mm x 0.50µm

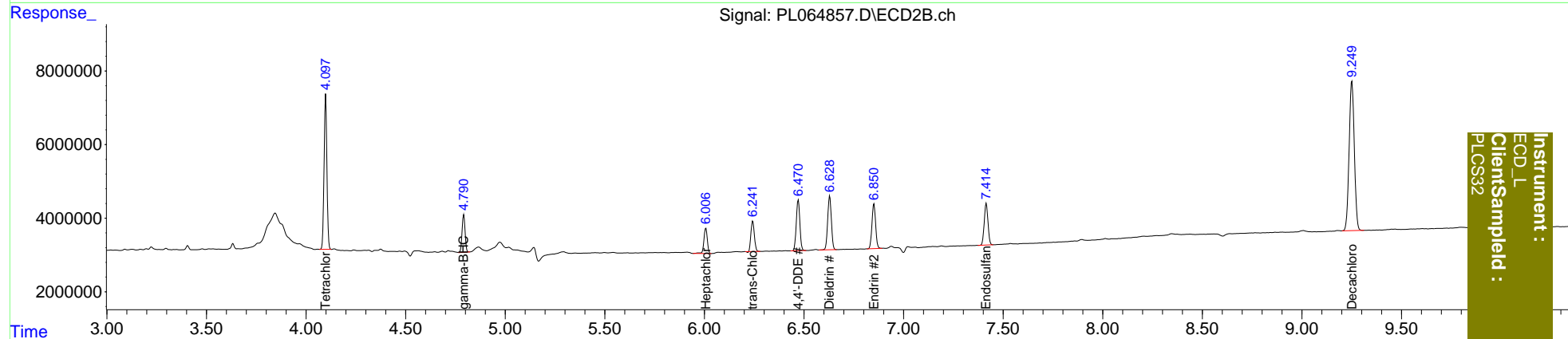
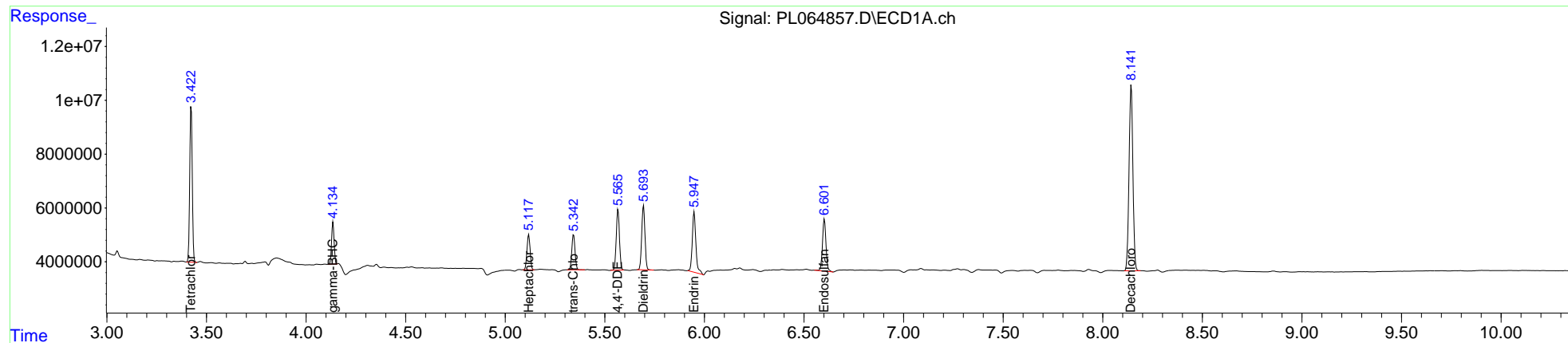
	Compound	RT#1	RT#2	Resp#1	Resp#2	ng/ml	ng/ml
-----							
System Monitoring Compounds							
1)	SA Tetrachlo...	3.423	4.099	51215874	42064578	16.985	16.847
27)	SA Decachlor...	8.143	9.251	93399760	73929422	32.658	32.959
Target Compounds							
3)	MA gamma-BHC...	4.136	4.792	13757028	10714236	3.243	3.514
8)	B Heptachlo...	5.118	6.007	14346000	8320446	3.963	3.556
10)	B trans-Chl...	5.343	6.243	14683190	9927288	3.921	3.719
12)	B 4,4'-DDE	5.566	6.471	25181438	17275744	7.329	7.229
13)	MA Dieldrin	5.694	6.629	27024348	18666503	7.326	7.409
14)	MA Endrin	5.948	6.851	28349047	15556861	8.771	7.538
19)	B Endosulfa...	6.602	7.415	23547016	14856611	7.658	7.309
-----							

(f)=RT Delta > 1/2 Window (#)=Amounts differ by > 25% (m)=manual int.

Data Path : Z:\pestpcbsrv\HPCHEM1\ECD\_L\Data\PL022121\  
 Data File : PL064857.D  
 Signal(s) : Signal #1: ECD1A.ch Signal #2: ECD2B.ch  
 Acq On : 21 Feb 2021 16:42  
 Operator : AR\AJ  
 Sample : PB134732BS  
 Misc :  
 ALS Vial : 21 Sample Multiplier: 1

Integration File signal 1: autoint1.e  
 Integration File signal 2: autoint2.e  
 Quant Time: Feb 22 04:21:14 2021  
 Quant Method : Z:\pestpcbsrv\HPCHEM1\ECD\_L\methods\PL022121CLP.M  
 Quant Title : GC Extractables  
 QLast Update : Mon Feb 22 03:50:14 2021  
 Response via : Initial Calibration  
 Integrator: ChemStation

Volume Inj. : 1 µl  
 Signal #1 Phase : ZB-MR2 Signal #2 Phase: ZB-MR1  
 Signal #1 Info : 30M x 0.32mm x0.2 Signal #2 Info : 30M x 0.32mm x 0.50µm



Instrument :  
 ECD\_L  
 ClientSampleId :  
 PLCS32