

Data Path : Z:\pestpcbsrv\HPCHEM1\ECD_L\Data\PL022122\
 Data File : PL072853.D
 Signal(s) : Signal #1: ECD1A.ch Signal #2: ECD2B.ch
 Acq On : 21 Feb 2022 18:19
 Operator : AR\AJ
 Sample : PB142834BL
 Misc :
 ALS Vial : 24 Sample Multiplier: 1

Instrument :
 ECD_L
 ClientSampleId :

Integration File signal 1: autoint1.e
 Integration File signal 2: autoint2.e
 Quant Time: Feb 22 02:30:44 2022
 Quant Method : Z:\pestpcbsrv\HPCHEM1\ECD_L\methods\PL020722.M
 Quant Title : GC Extractables
 QLast Update : Tue Feb 08 05:14:10 2022
 Response via : Initial Calibration
 Integrator: ChemStation

Volume Inj. : 1 µl
 Signal #1 Phase : ZB-MR2 Signal #2 Phase: ZB-MR1
 Signal #1 Info : 30M x 0.32mm x0.2 Signal #2 Info : 30M x 0.32mm x0.5µm

	Compound	RT#1	RT#2	Resp#1	Resp#2	ng/ml	ng/ml

System Monitoring Compounds							
1)	SA Tetrachlo...	4.551	5.488	9127449	32577344	18.956	18.859
28)	SA Decachlor...	10.310	11.377	15286267	32888561	20.192	20.740
Target Compounds							
2)	A alpha-BHC	5.269	0.000	138306	0	0.210	N.D. #
3)	MA gamma-BHC...	5.695	6.500f	27972	83729	0.045	0.036
5)	MB Aldrin	6.418	0.000	6915	0	0.011	N.D. #
7)	B delta-BHC	6.345	7.011f	47396	2372364	0.072	1.035 #
8)	B Heptachlo...	6.995	0.000	5190	0	0.008	N.D. #
9)	A Endosulfan I	7.372f	8.376f	10406	63571	0.018	0.036 #
10)	B gamma-Chl...	7.273	8.224	6614	361830	0.010	0.187 #
11)	B alpha-Chl...	7.338	0.000	5571	0	0.009	N.D. #
12)	B 4,4'-DDE	7.567	0.000	11392	0	0.019	N.D. #
13)	MA Dieldrin	7.707f	8.662	65374	18092	0.104	0.010 #
14)	MA Endrin	7.990f	0.000	75188	0	0.128	N.D. #
15)	B Endosulfa...	8.259f	9.146f	49746	52626	0.082	0.031 #
17)	MA 4,4'-DDT	8.397	0.000	29928	0	0.056	N.D. #
18)	B Endrin al...	8.470	0.000	38523	0	0.088	N.D. #
20)	A Methoxychlor	8.999	9.868f	6896	61634	0.020	0.076 #
21)	B Endrin ke...	0.000	10.018f	0	81035	N.D.	0.051 #
22)	Mirex	9.398	10.482f	21097	222899	0.036	0.190 #
24)	Chlordane-2	6.560	0.000	7429	0	0.294	N.D. #
25)	Chlordane-3	7.273	8.224	6614	361830	0.098	1.211 #
26)	Chlordane-4	7.338	0.000	5571	0	0.076	N.D. #
27)	Chlordane-5	8.259f	0.000	49746	0	1.939	N.D. #

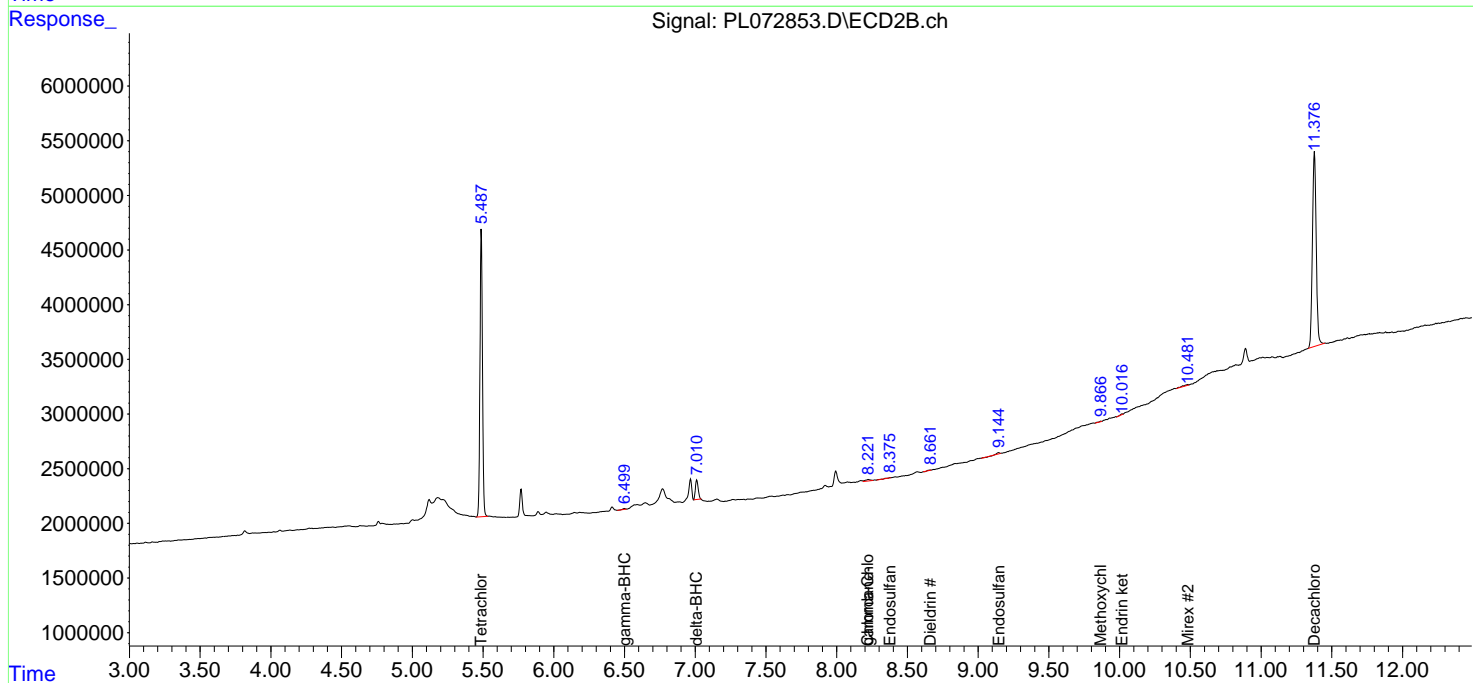
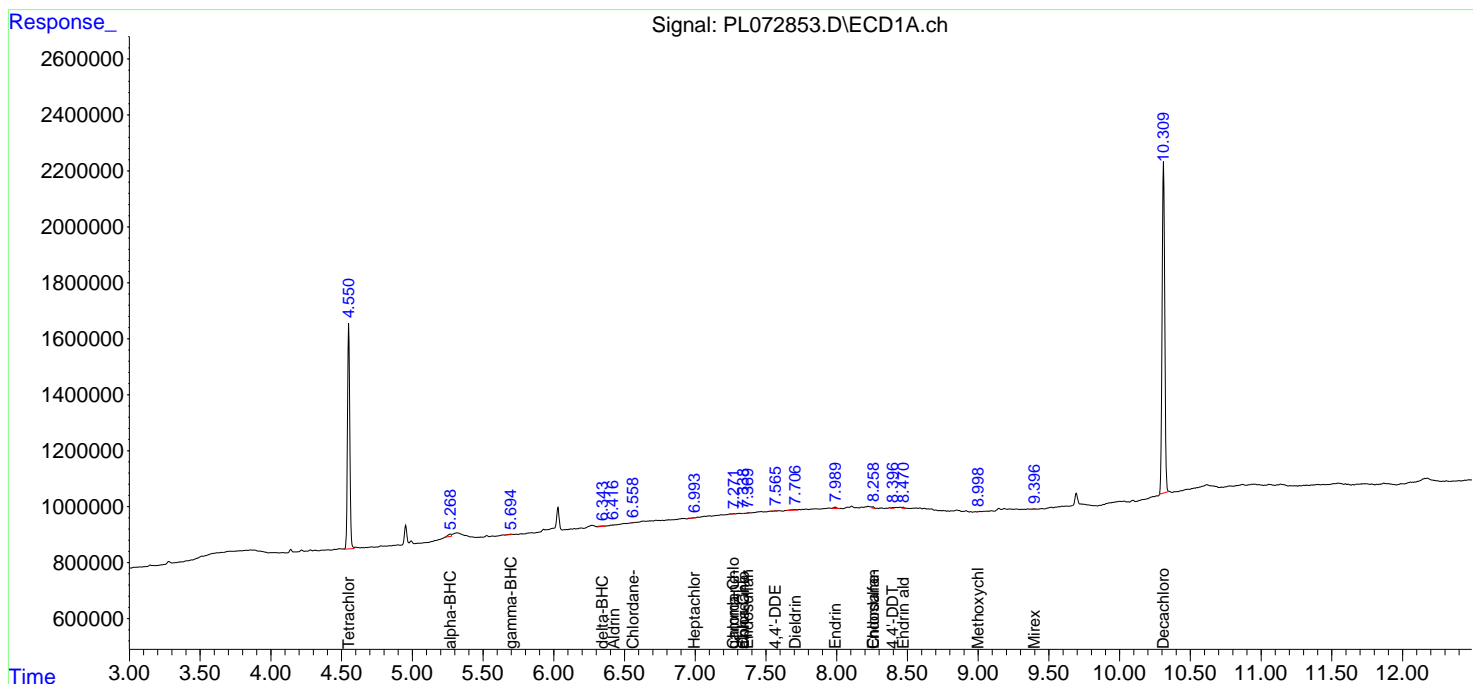
(f)=RT Delta > 1/2 Window (#)=Amounts differ by > 25% (m)=manual int.

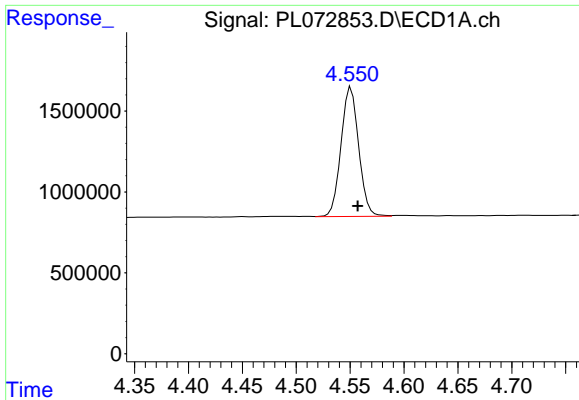
Data Path : Z:\pestpcbsrv\HPCHEM1\ECD_L\Data\PL022122\
 Data File : PL072853.D
 Signal(s) : Signal #1: ECD1A.ch Signal #2: ECD2B.ch
 Acq On : 21 Feb 2022 18:19
 Operator : AR\AJ
 Sample : PB142834BL
 Misc :
 ALS Vial : 24 Sample Multiplier: 1

Instrument :
 ECD_L
 ClientSampleId :

Integration File signal 1: autoint1.e
 Integration File signal 2: autoint2.e
 Quant Time: Feb 22 02:30:44 2022
 Quant Method : Z:\pestpcbsrv\HPCHEM1\ECD_L\methods\PL020722.M
 Quant Title : GC Extractables
 QLast Update : Tue Feb 08 05:14:10 2022
 Response via : Initial Calibration
 Integrator: ChemStation

Volume Inj. : 1 µl
 Signal #1 Phase : ZB-MR2 Signal #2 Phase: ZB-MR1
 Signal #1 Info : 30M x 0.32mm x0.2 Signal #2 Info : 30M x 0.32mm x0.5µm

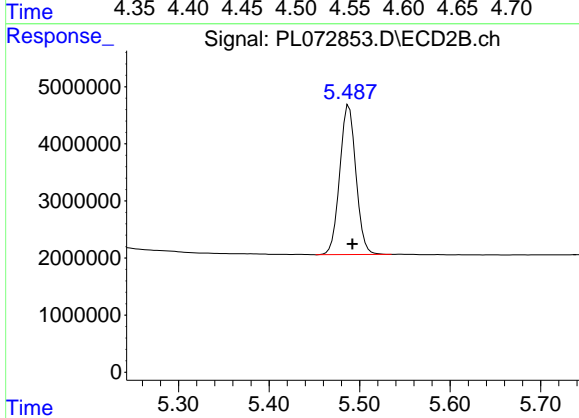




#1 Tetrachloro-m-xylene

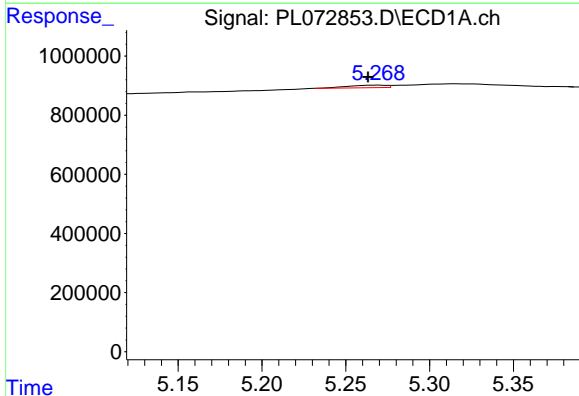
R.T.: 4.551 min
 Delta R.T.: -0.006 min
 Response: 9127449
 Conc: 18.96 ng/ml

Instrument :
 ECD_L
 ClientSampleId :



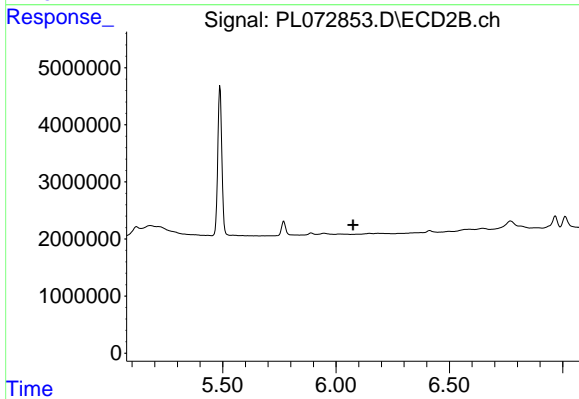
#1 Tetrachloro-m-xylene

R.T.: 5.488 min
 Delta R.T.: -0.004 min
 Response: 32577344
 Conc: 18.86 ng/ml



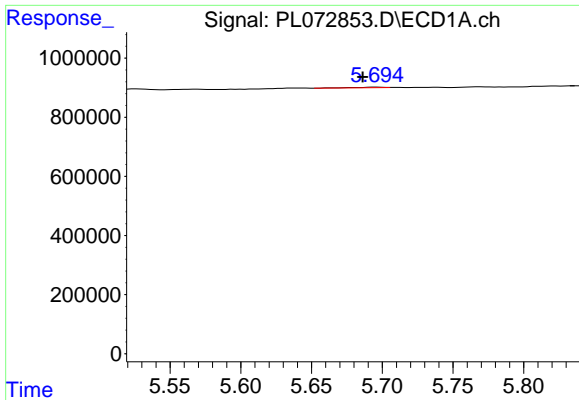
#2 alpha-BHC

R.T.: 5.269 min
 Delta R.T.: 0.006 min
 Response: 138306
 Conc: 0.21 ng/ml



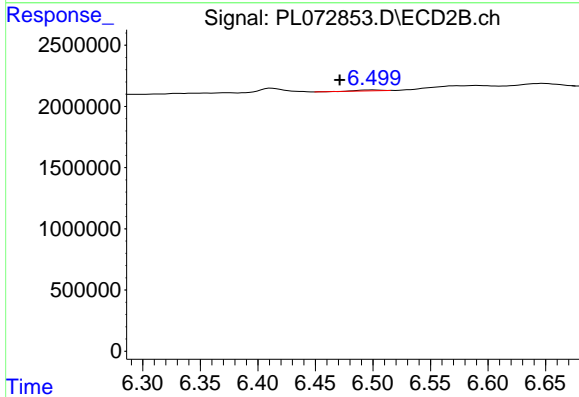
#2 alpha-BHC

R.T.: 0.000 min
 Exp R.T. : 6.075 min
 Response: 0
 Conc: N.D.

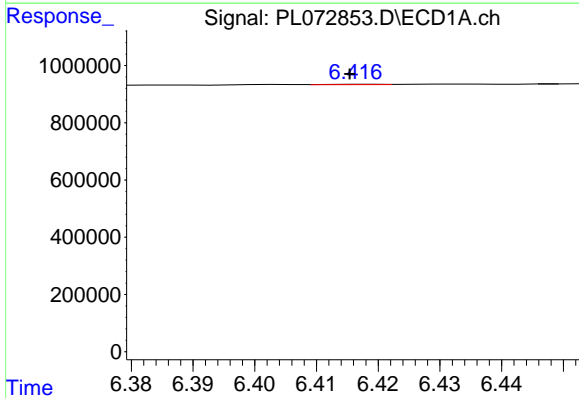


#3 gamma-BHC (Lindane)
 R.T.: 5.695 min
 Delta R.T.: 0.009 min
 Response: 27972
 Conc: 0.04 ng/ml

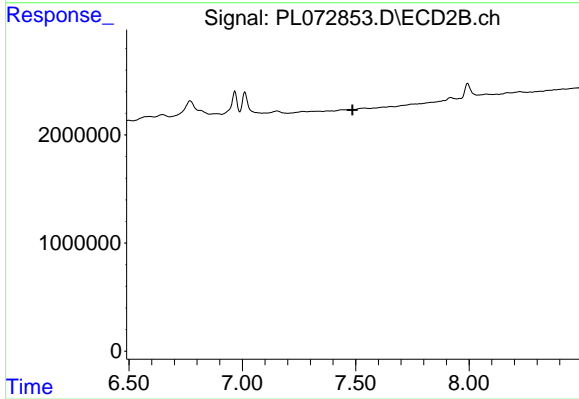
Instrument :
 ECD_L
 ClientSampleId :



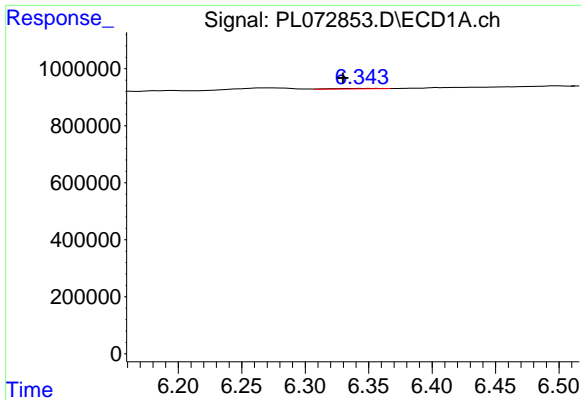
#3 gamma-BHC (Lindane)
 R.T.: 6.500 min
 Delta R.T.: 0.029 min
 Response: 83729
 Conc: 0.04 ng/ml



#5 Aldrin
 R.T.: 6.418 min
 Delta R.T.: 0.003 min
 Response: 6915
 Conc: 0.01 ng/ml



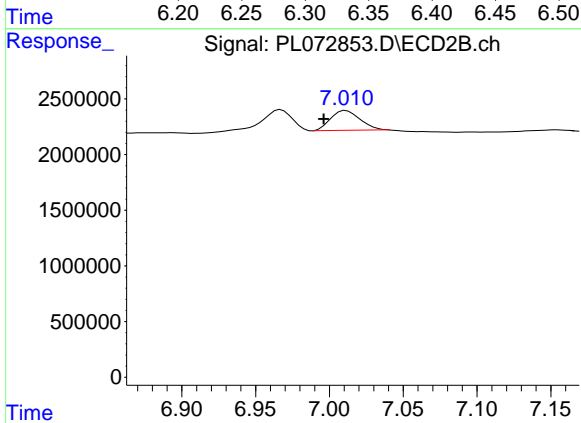
#5 Aldrin
 R.T.: 0.000 min
 Exp R.T. : 7.486 min
 Response: 0
 Conc: N.D.



#7 delta-BHC

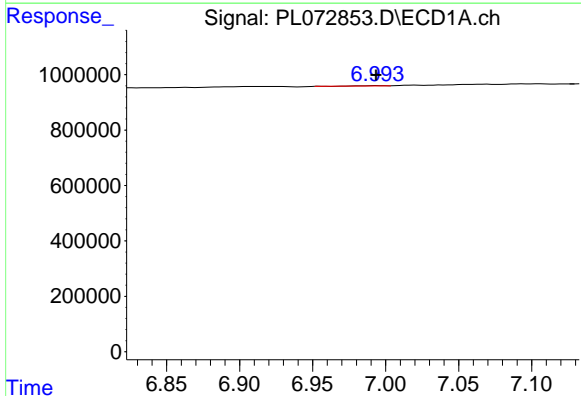
R.T.: 6.345 min
 Delta R.T.: 0.015 min
 Response: 47396
 Conc: 0.07 ng/ml

Instrument :
 ECD_L
 ClientSampleId :



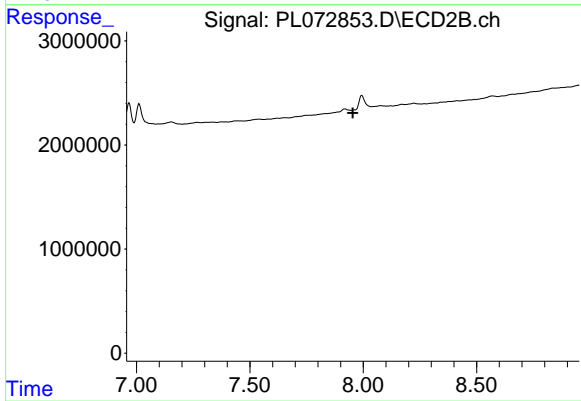
#7 delta-BHC

R.T.: 7.011 min
 Delta R.T.: 0.015 min
 Response: 2372364
 Conc: 1.04 ng/ml



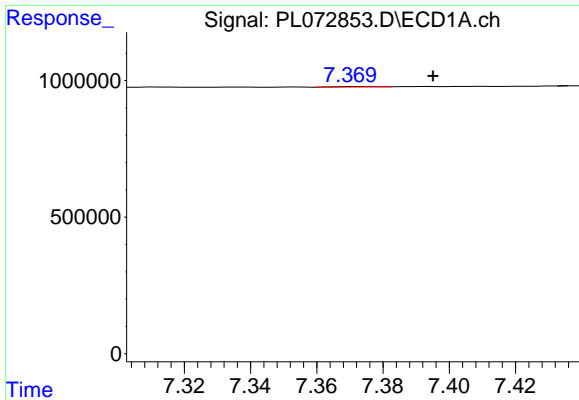
#8 Heptachlor epoxide

R.T.: 6.995 min
 Delta R.T.: 0.001 min
 Response: 5190
 Conc: 0.01 ng/ml



#8 Heptachlor epoxide

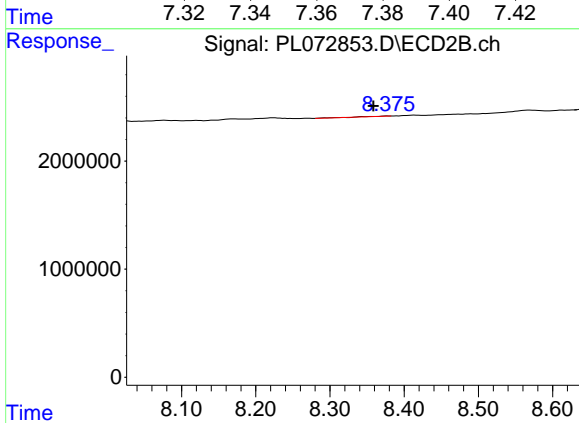
R.T.: 0.000 min
 Exp R.T. : 7.954 min
 Response: 0
 Conc: N.D.



#9 Endosulfan I

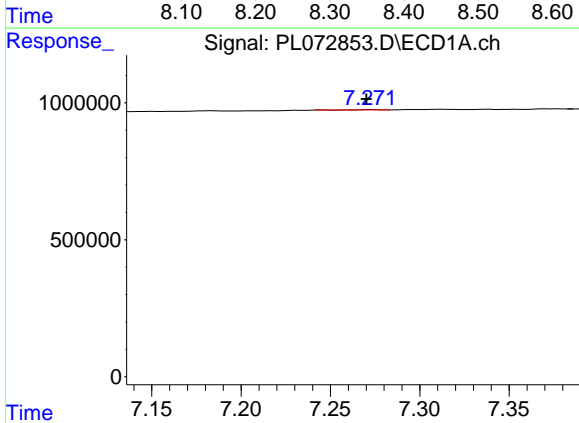
R.T.: 7.372 min
 Delta R.T.: -0.023 min
 Response: 10406
 Conc: 0.02 ng/ml

Instrument :
 ECD_L
 ClientSampleId :



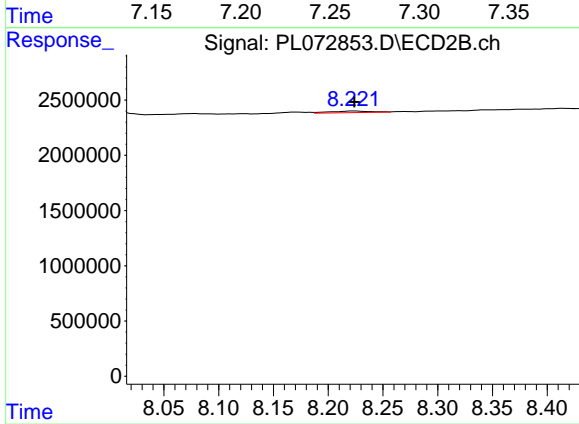
#9 Endosulfan I

R.T.: 8.376 min
 Delta R.T.: 0.018 min
 Response: 63571
 Conc: 0.04 ng/ml



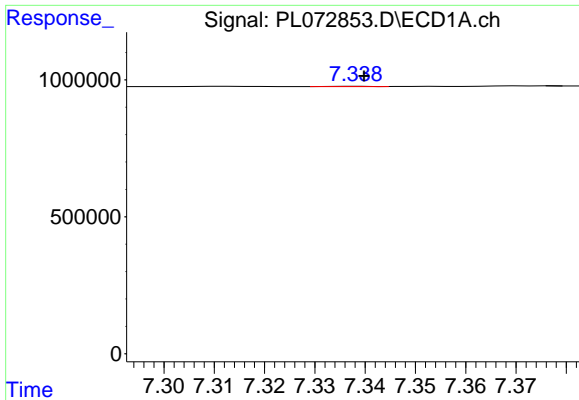
#10 gamma-Chlordane

R.T.: 7.273 min
 Delta R.T.: 0.002 min
 Response: 6614
 Conc: 0.01 ng/ml



#10 gamma-Chlordane

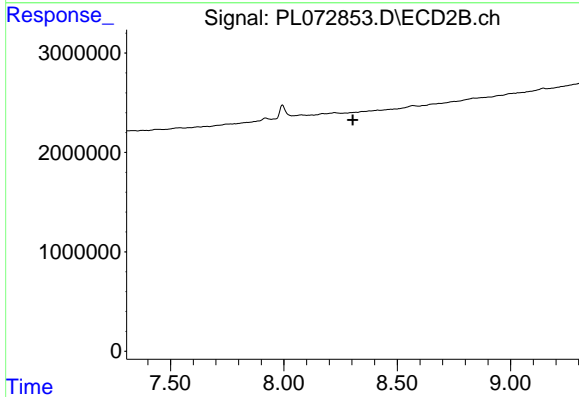
R.T.: 8.224 min
 Delta R.T.: 0.000 min
 Response: 361830
 Conc: 0.19 ng/ml



#11 alpha-Chlordane

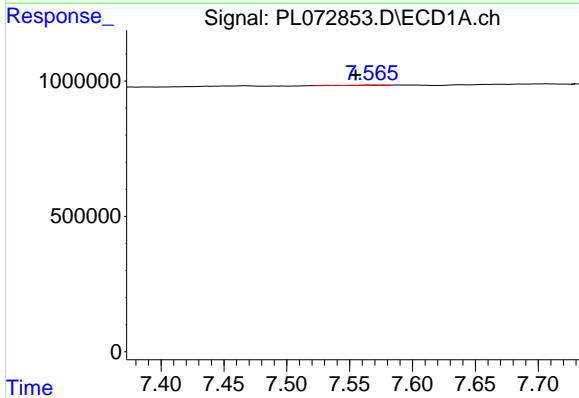
R.T.: 7.338 min
 Delta R.T.: -0.002 min
 Response: 5571
 Conc: 0.01 ng/ml

Instrument :
 ECD_L
 ClientSampleId :



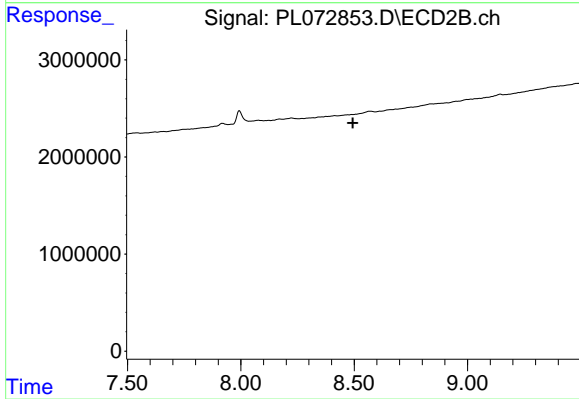
#11 alpha-Chlordane

R.T.: 0.000 min
 Exp R.T. : 8.304 min
 Response: 0
 Conc: N.D.



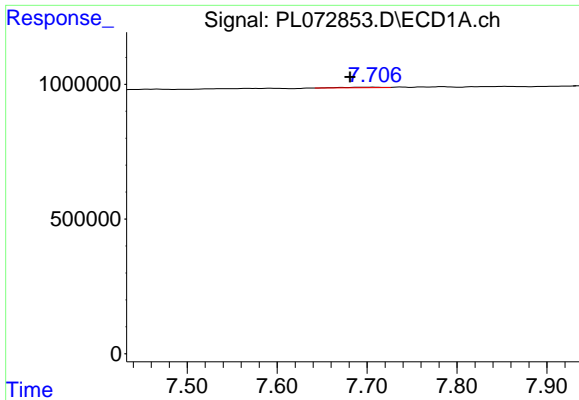
#12 4,4'-DDE

R.T.: 7.567 min
 Delta R.T.: 0.012 min
 Response: 11392
 Conc: 0.02 ng/ml



#12 4,4'-DDE

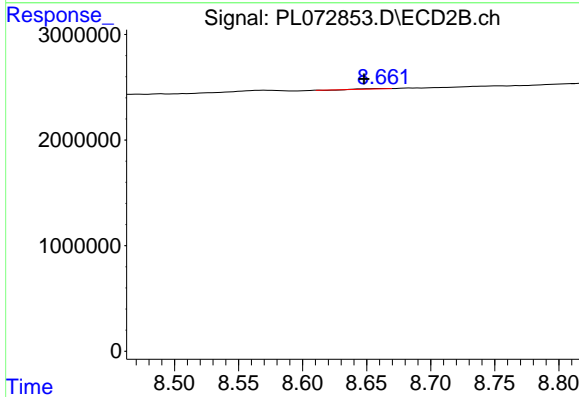
R.T.: 0.000 min
 Exp R.T. : 8.494 min
 Response: 0
 Conc: N.D.



#13 Dieldrin

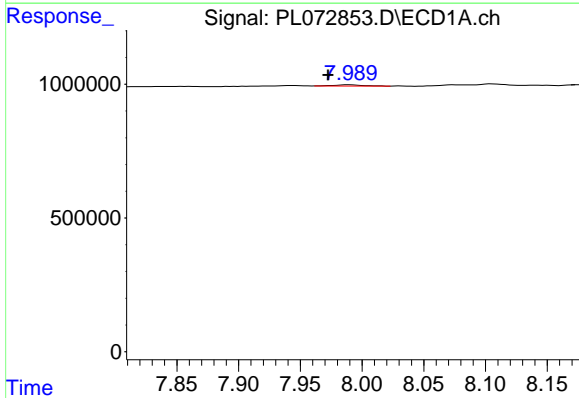
R.T.: 7.707 min
 Delta R.T.: 0.026 min
 Response: 65374
 Conc: 0.10 ng/ml

Instrument :
 ECD_L
 ClientSampleId :



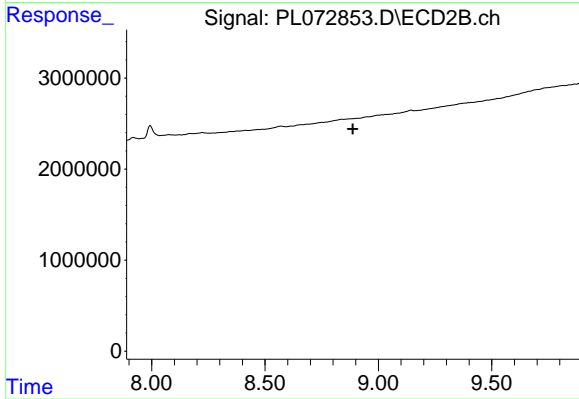
#13 Dieldrin

R.T.: 8.662 min
 Delta R.T.: 0.014 min
 Response: 18092
 Conc: 0.01 ng/ml



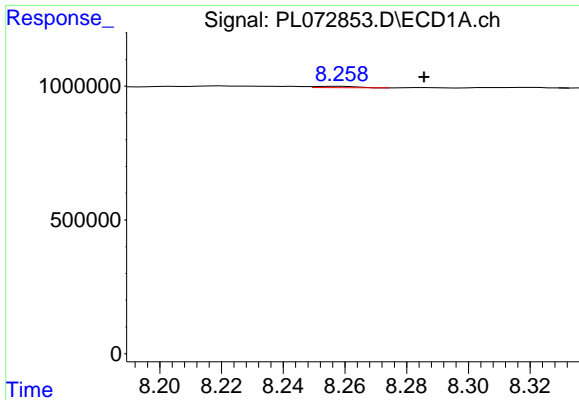
#14 Endrin

R.T.: 7.990 min
 Delta R.T.: 0.017 min
 Response: 75188
 Conc: 0.13 ng/ml



#14 Endrin

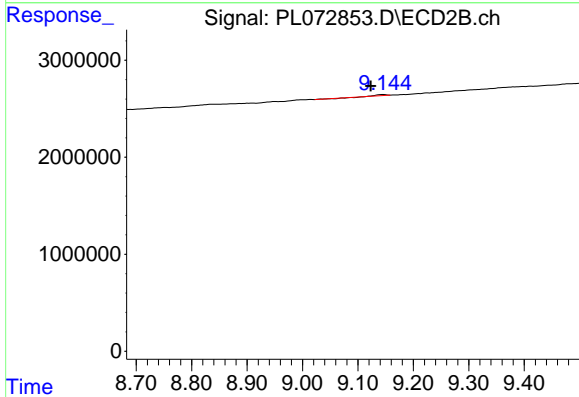
R.T.: 0.000 min
 Exp R.T. : 8.887 min
 Response: 0
 Conc: N.D.



#15 Endosulfan II

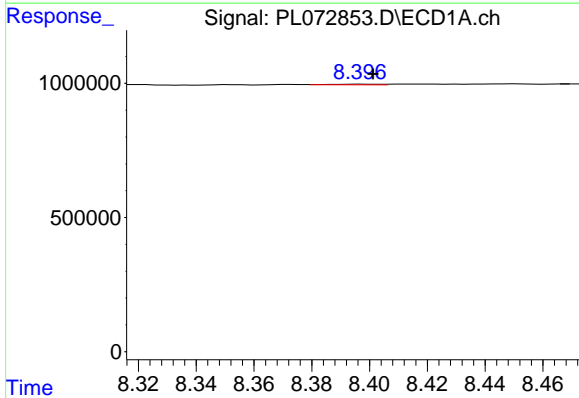
R.T.: 8.259 min
 Delta R.T.: -0.027 min
 Response: 49746
 Conc: 0.08 ng/ml

Instrument :
 ECD_L
 ClientSampleId :



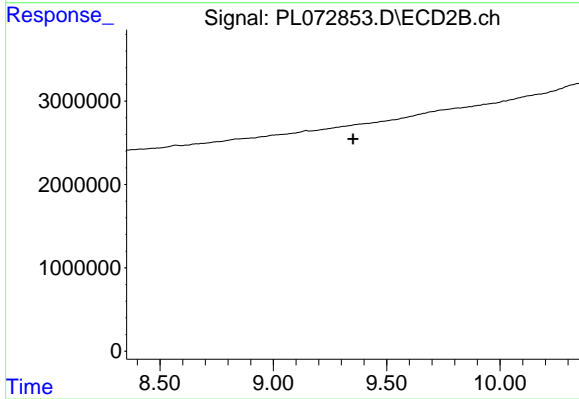
#15 Endosulfan II

R.T.: 9.146 min
 Delta R.T.: 0.022 min
 Response: 52626
 Conc: 0.03 ng/ml



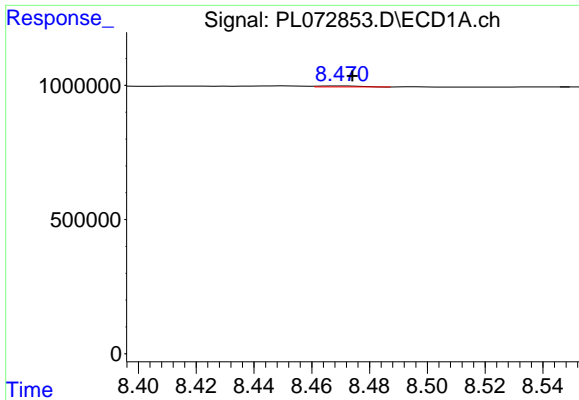
#17 4,4'-DDT

R.T.: 8.397 min
 Delta R.T.: -0.004 min
 Response: 29928
 Conc: 0.06 ng/ml



#17 4,4'-DDT

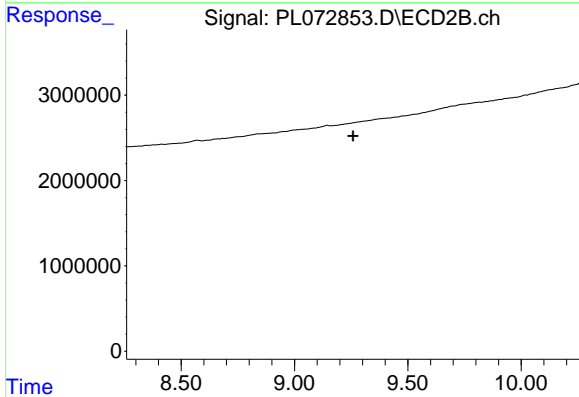
R.T.: 0.000 min
 Exp R.T. : 9.352 min
 Response: 0
 Conc: N.D.



#18 Endrin aldehyde

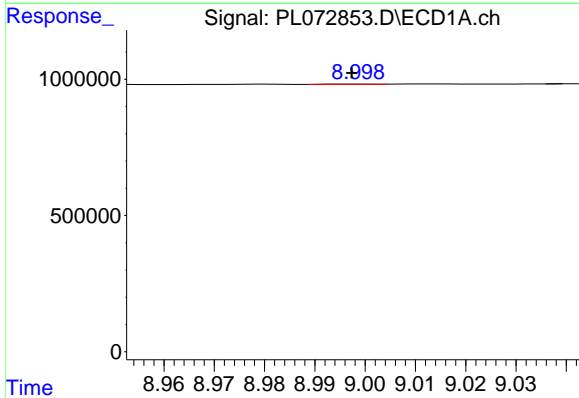
R.T.: 8.470 min
 Delta R.T.: -0.004 min
 Response: 38523
 Conc: 0.09 ng/ml

Instrument :
 ECD_L
 ClientSampleId :



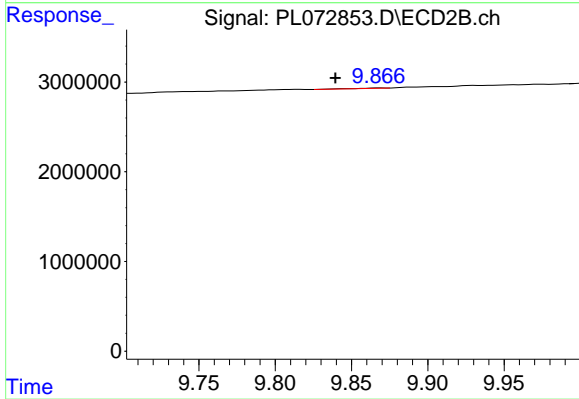
#18 Endrin aldehyde

R.T.: 0.000 min
 Exp R.T. : 9.258 min
 Response: 0
 Conc: N.D.



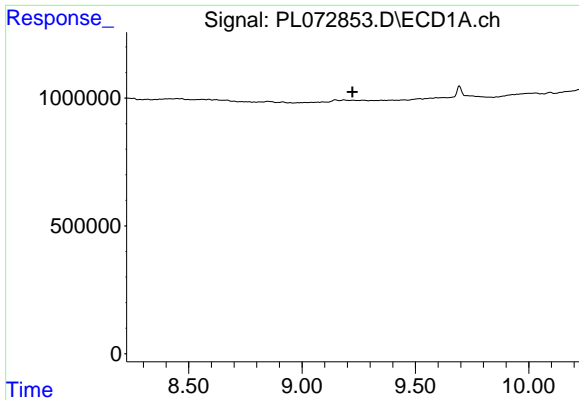
#20 Methoxychlor

R.T.: 8.999 min
 Delta R.T.: 0.002 min
 Response: 6896
 Conc: 0.02 ng/ml



#20 Methoxychlor

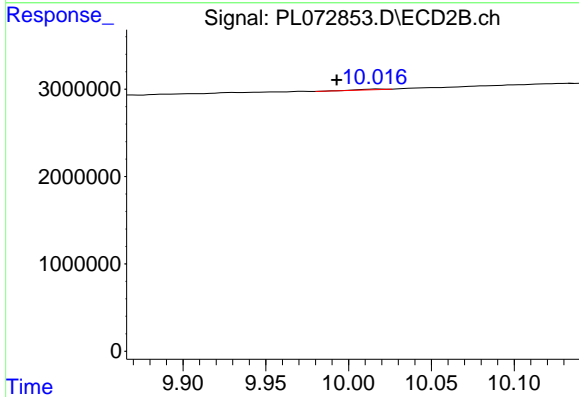
R.T.: 9.868 min
 Delta R.T.: 0.029 min
 Response: 61634
 Conc: 0.08 ng/ml



#21 Endrin ketone

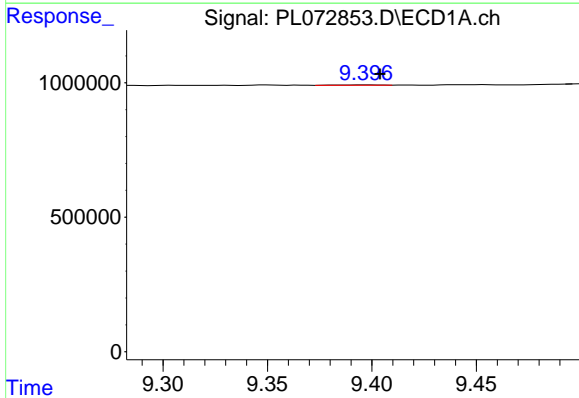
R.T.: 0.000 min
 Exp R.T.: 9.223 min
 Response: 0
 Conc: N.D.

Instrument :
 ECD_L
 ClientSampleId :



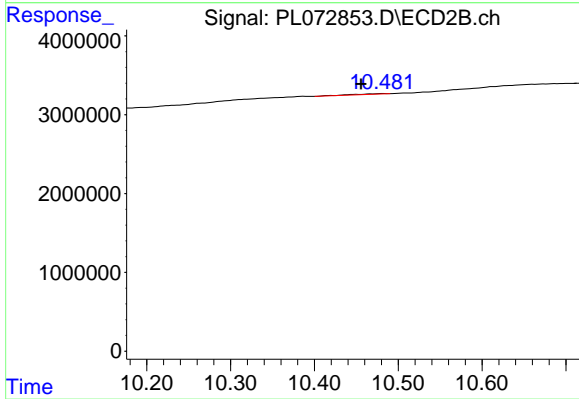
#21 Endrin ketone

R.T.: 10.018 min
 Delta R.T.: 0.025 min
 Response: 81035
 Conc: 0.05 ng/ml



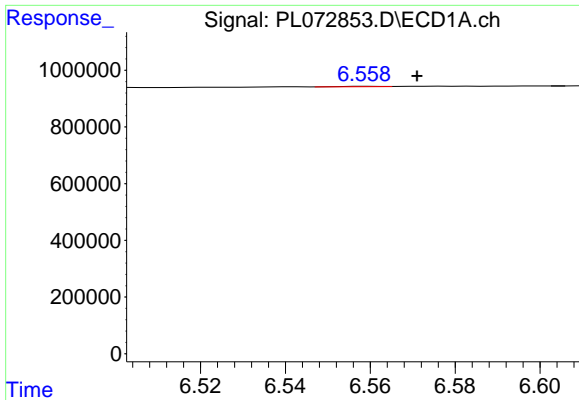
#22 Mirex

R.T.: 9.398 min
 Delta R.T.: -0.006 min
 Response: 21097
 Conc: 0.04 ng/ml



#22 Mirex

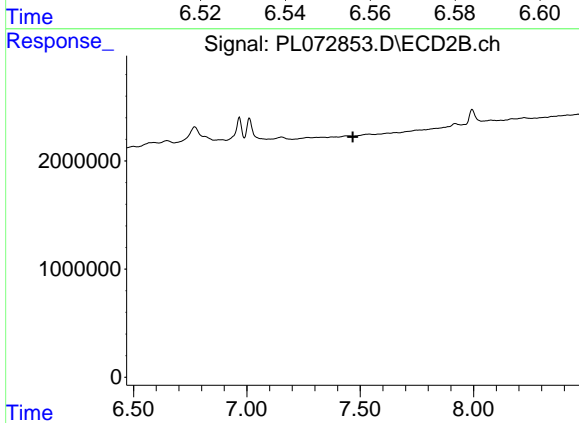
R.T.: 10.482 min
 Delta R.T.: 0.027 min
 Response: 222899
 Conc: 0.19 ng/ml



#24 Chlordane-2

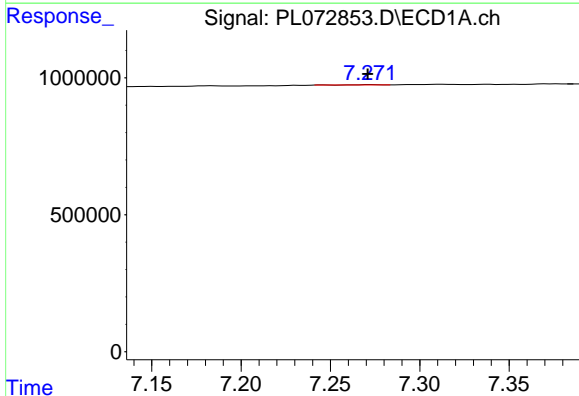
R.T.: 6.560 min
 Delta R.T.: -0.011 min
 Response: 7429
 Conc: 0.29 ng/ml

Instrument :
 ECD_L
 ClientSampleId :



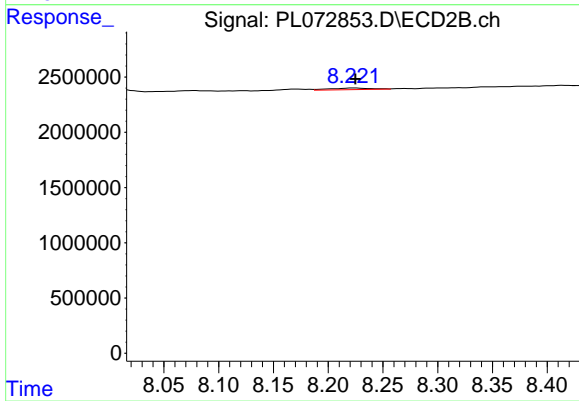
#24 Chlordane-2

R.T.: 0.000 min
 Exp R.T. : 7.467 min
 Response: 0
 Conc: N.D.



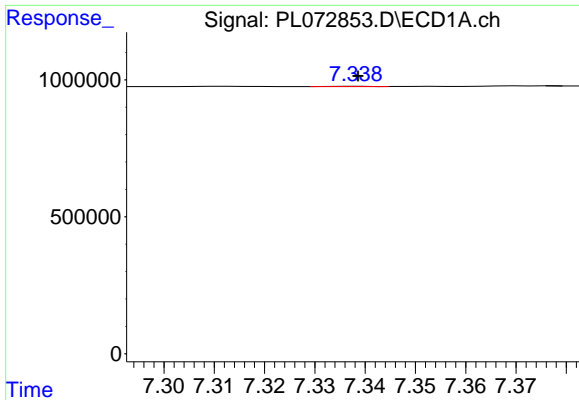
#25 Chlordane-3

R.T.: 7.273 min
 Delta R.T.: 0.002 min
 Response: 6614
 Conc: 0.10 ng/ml



#25 Chlordane-3

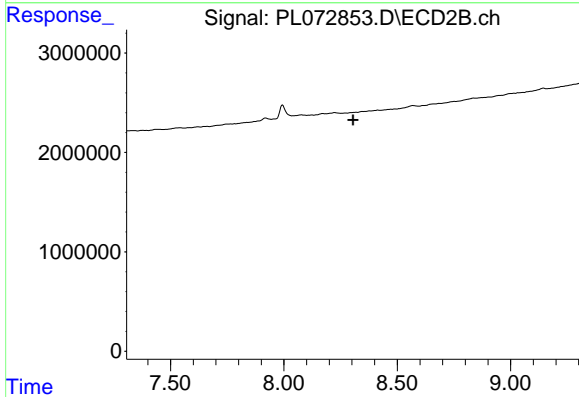
R.T.: 8.224 min
 Delta R.T.: -0.001 min
 Response: 361830
 Conc: 1.21 ng/ml



#26 Chlordane-4

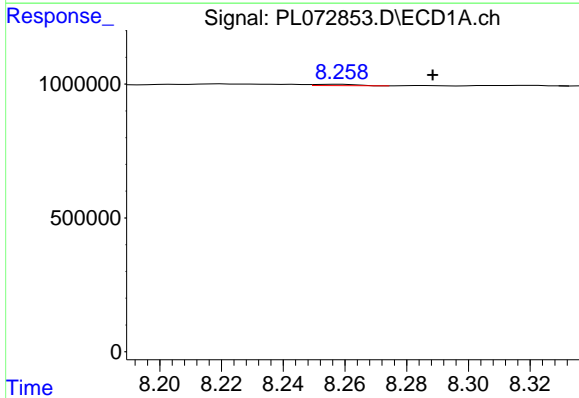
R.T.: 7.338 min
 Delta R.T.: 0.000 min
 Response: 5571
 Conc: 0.08 ng/ml

Instrument :
 ECD_L
 ClientSampleId :



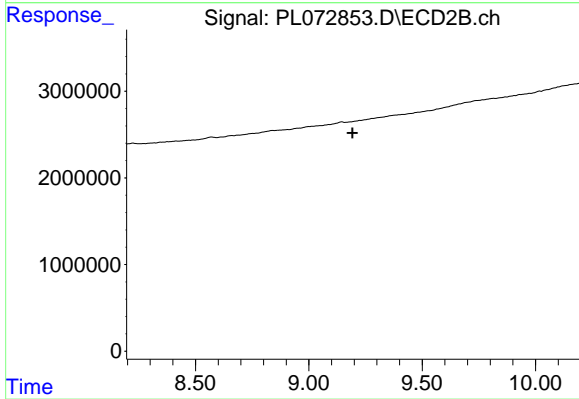
#26 Chlordane-4

R.T.: 0.000 min
 Exp R.T. : 8.306 min
 Response: 0
 Conc: N.D.



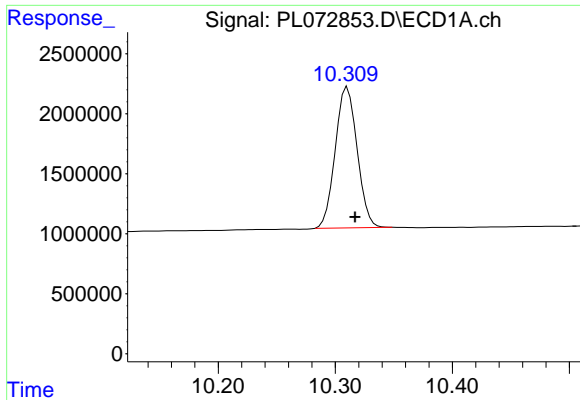
#27 Chlordane-5

R.T.: 8.259 min
 Delta R.T.: -0.029 min
 Response: 49746
 Conc: 1.94 ng/ml



#27 Chlordane-5

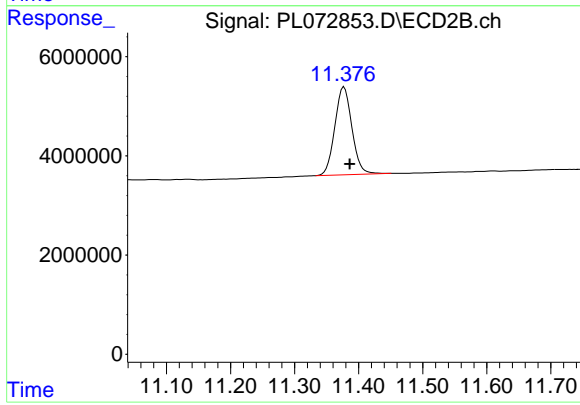
R.T.: 0.000 min
 Exp R.T. : 9.193 min
 Response: 0
 Conc: N.D.



#28 Decachlorobiphenyl

R.T.: 10.310 min
Delta R.T.: -0.007 min
Response: 15286267
Conc: 20.19 ng/ml

Instrument :
ECD_L
ClientSampleId :



#28 Decachlorobiphenyl

R.T.: 11.377 min
Delta R.T.: -0.009 min
Response: 32888561
Conc: 20.74 ng/ml