

Data Path : Z:\pestpcbsrv\HPCHEM1\ECD\_L\Data\PL022125\  
 Data File : PL094329.D  
 Signal(s) : Signal #1: ECD1A.ch Signal #2: ECD2B.ch  
 Acq On : 21 Feb 2025 11:37  
 Operator : AR\AJ  
 Sample : PSTDIC025  
 Misc :  
 ALS Vial : 8 Sample Multiplier: 1

Instrument :  
 ECD\_L  
 ClientSampleId :

Integration File signal 1: autoint1.e  
 Integration File signal 2: autoint2.e  
 Quant Time: Feb 21 11:53:19 2025  
 Quant Method : Z:\pestpcbsrv\HPCHEM1\ECD\_L\methods\PL022125.M  
 Quant Title : GC Extractables  
 QLast Update : Fri Feb 21 11:46:00 2025  
 Response via : Initial Calibration  
 Integrator: ChemStation

Volume Inj. : 1 µl  
 Signal #1 Phase : ZB-MR2 Signal #2 Phase: ZB-MR2  
 Signal #1 Info : 30M x 0.32mm x0.5 Signal #2 Info : 30M x 0.32mm x0.25µm

	Compound	RT#1	RT#2	Resp#1	Resp#2	ng/ml	ng/ml
-----							
System Monitoring Compounds							
1)	SA Tetrachlo...	3.537	2.771	65060344	79649212	26.243	25.170
28)	SA Decachlor...	9.049	7.905	55082778	95505363	27.100	25.783
Target Compounds							
2)	A alpha-BHC	3.992	3.273	94515519	119.7E6	25.541	24.067
3)	MA gamma-BHC...	4.325	3.604	92761866	115.2E6	25.719	24.185
4)	MA Heptachlor	4.913	3.942	86115609	117.0E6	26.324	24.801
5)	MB Aldrin	5.254	4.221	86928991	113.9E6	26.280	24.519
6)	B beta-BHC	4.524	3.904	41686104	49406972	27.118	25.366
7)	B delta-BHC	4.771	4.132	88045756	115.7E6	25.609	24.112
8)	B Heptachlo...	5.681	4.724	76876028	106.4E6	26.443	25.110
9)	A Endosulfan I	6.066	5.093	69593896	99489816	26.580	25.100
10)	B gamma-Chl...	5.937	4.974	73787635	107.5E6	26.404	24.896
11)	B alpha-Chl...	6.016	5.037	73419053	107.6E6	26.465	25.129
12)	B 4,4'-DDE	6.190	5.226	67623636	105.3E6	26.582	25.087
13)	MA Dieldrin	6.342	5.357	72547132	108.7E6	26.477	24.727
14)	MA Endrin	6.571	5.633	64078269	87471143	27.021	25.129
15)	B Endosulfa...	6.791	5.928	63395516	94176002	26.914	25.180
16)	A 4,4'-DDD	6.707	5.780	48378655	79168494	26.348	24.631
17)	MA 4,4'-DDT	7.021	6.031	53652973	88440476	26.428	24.644
18)	B Endrin al...	6.922	6.107	50501352	78974212	27.114	25.442
19)	B Endosulfa...	7.156	6.330	58130876	92670594	27.042	25.304
20)	A Methoxychlor	7.497	6.606	29029751	50159570	26.939	25.821
21)	B Endrin ke...	7.641	6.835	64585363	107.0E6	26.742	25.193
22)	Mirex	8.114	7.014	53883808	88624231	27.563	25.999

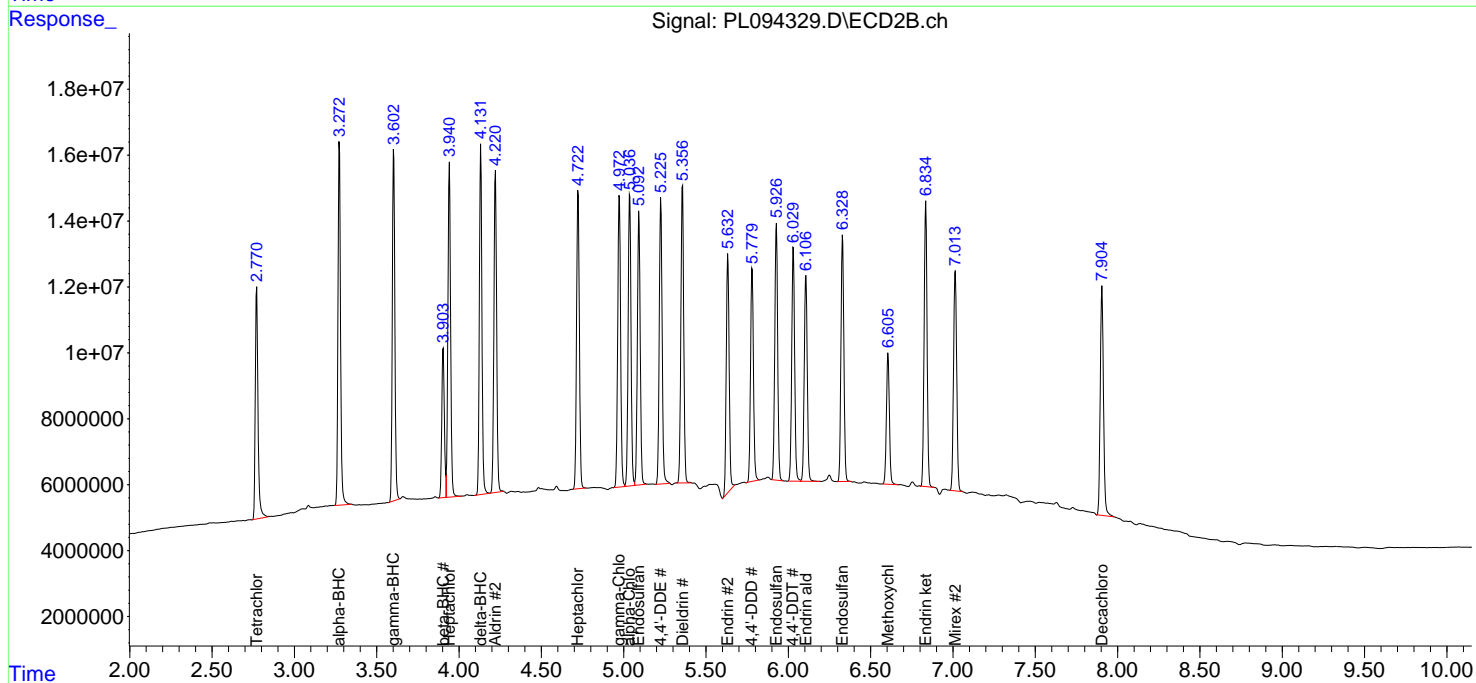
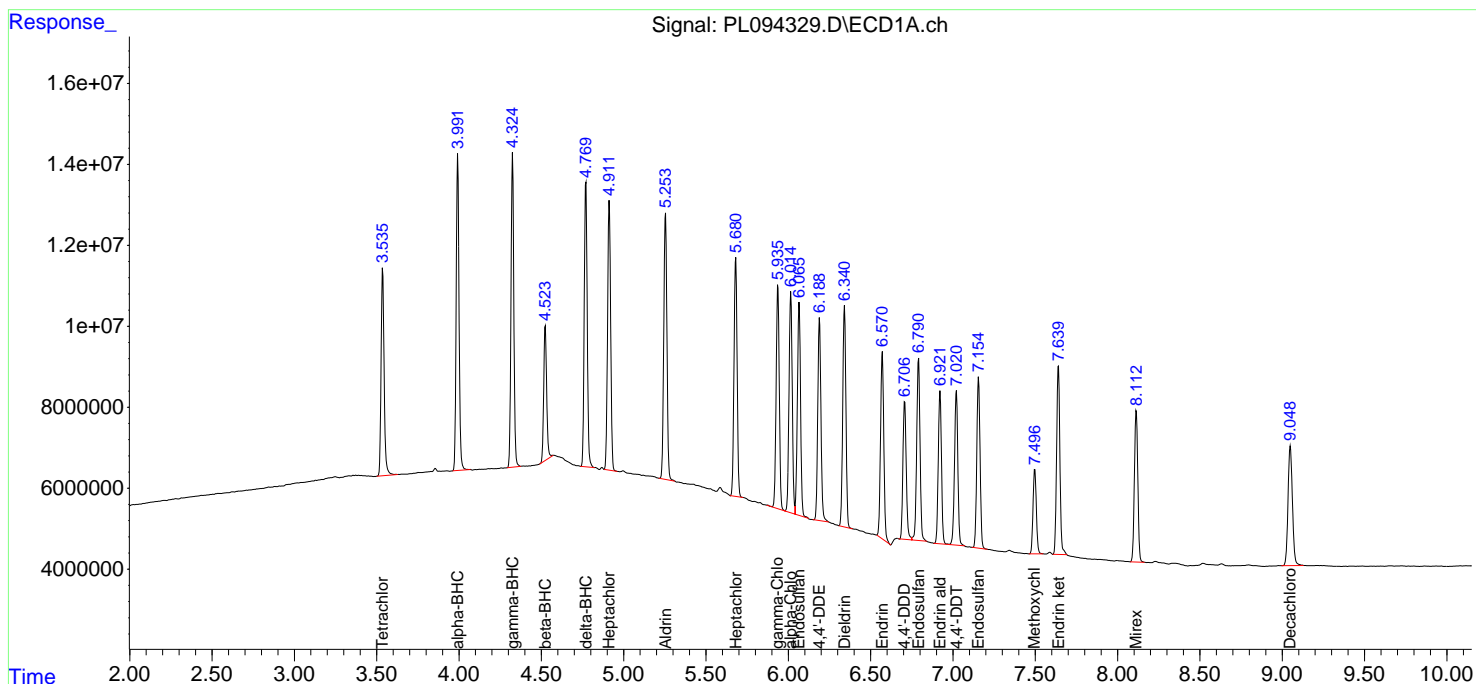
(f)=RT Delta > 1/2 Window (#)=Amounts differ by > 25% (m)=manual int.

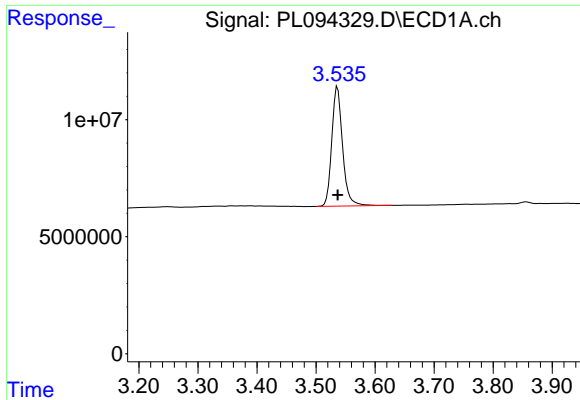
Data Path : Z:\pestpcbsrv\HPCHEM1\ECD\_L\Data\PL022125\  
 Data File : PL094329.D  
 Signal(s) : Signal #1: ECD1A.ch Signal #2: ECD2B.ch  
 Acq On : 21 Feb 2025 11:37  
 Operator : AR\AJ  
 Sample : PSTDICC025  
 Misc :  
 ALS Vial : 8 Sample Multiplier: 1

Instrument :  
 ECD\_L  
 ClientSampleId :

Integration File signal 1: autoint1.e  
 Integration File signal 2: autoint2.e  
 Quant Time: Feb 21 11:53:19 2025  
 Quant Method : Z:\pestpcbsrv\HPCHEM1\ECD\_L\methods\PL022125.M  
 Quant Title : GC Extractables  
 QLast Update : Fri Feb 21 11:46:00 2025  
 Response via : Initial Calibration  
 Integrator: ChemStation

Volume Inj. : 1 µl  
 Signal #1 Phase : ZB-MR1 Signal #2 Phase: ZB-MR2  
 Signal #1 Info : 30M x 0.32mm x0.5 Signal #2 Info : 30M x 0.32mm x0.25µm

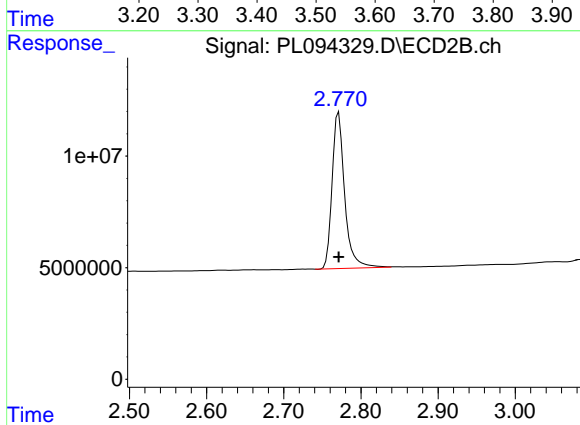




#1 Tetrachloro-m-xylene

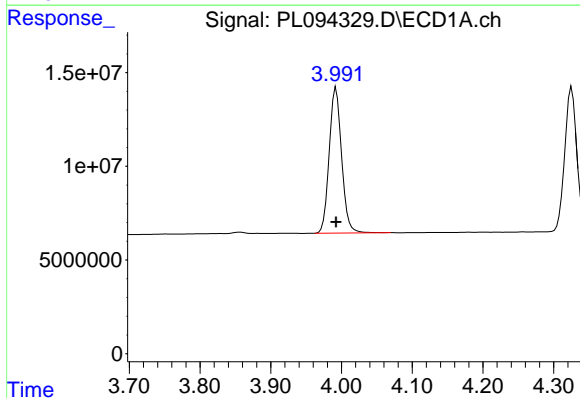
R.T.: 3.537 min  
 Delta R.T.: 0.000 min  
 Response: 65060344  
 Conc: 26.24 ng/ml

Instrument :  
 ECD\_L  
 ClientSampleId :



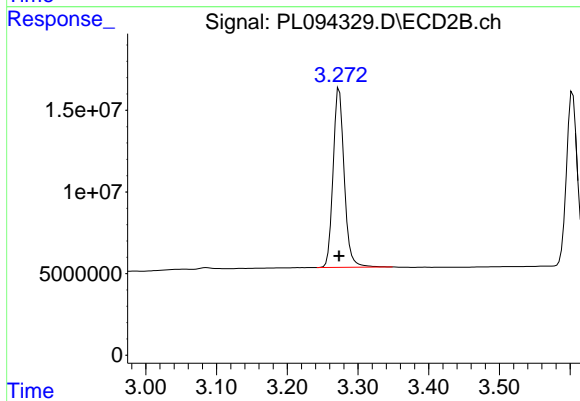
#1 Tetrachloro-m-xylene

R.T.: 2.771 min  
 Delta R.T.: 0.000 min  
 Response: 79649212  
 Conc: 25.17 ng/ml



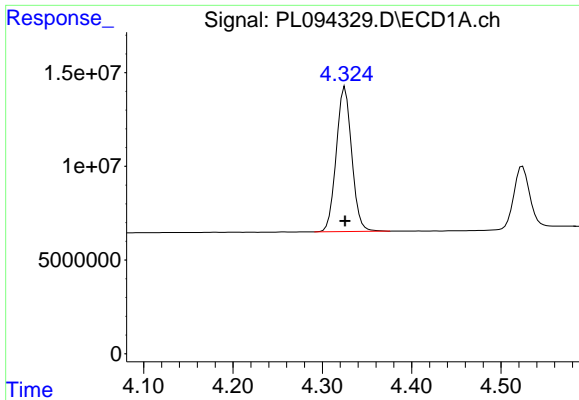
#2 alpha-BHC

R.T.: 3.992 min  
 Delta R.T.: 0.000 min  
 Response: 94515519  
 Conc: 25.54 ng/ml



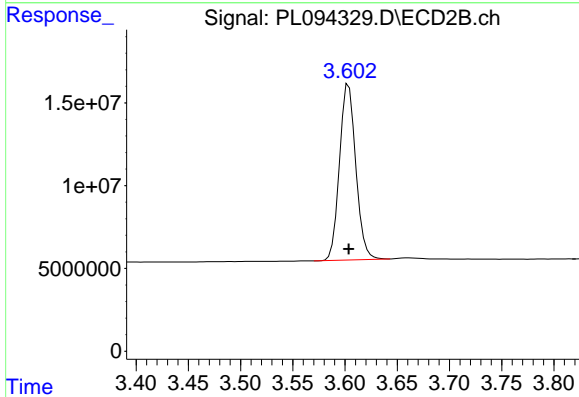
#2 alpha-BHC

R.T.: 3.273 min  
 Delta R.T.: 0.000 min  
 Response: 119719952  
 Conc: 24.07 ng/ml

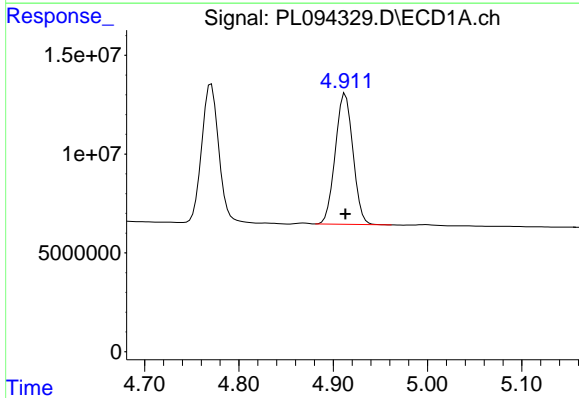


#3 gamma-BHC (Lindane)  
 R.T.: 4.325 min  
 Delta R.T.: 0.000 min  
 Response: 92761866  
 Conc: 25.72 ng/ml

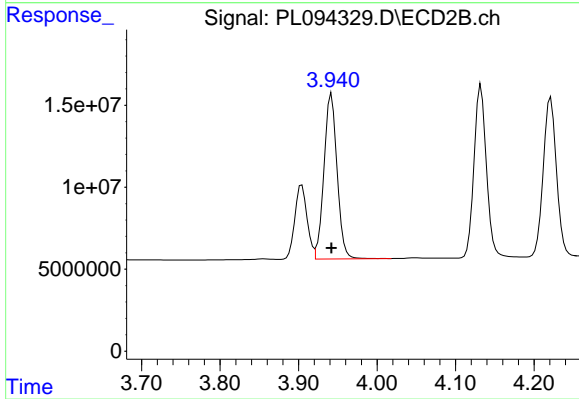
Instrument :  
 ECD\_L  
 ClientSampleId :



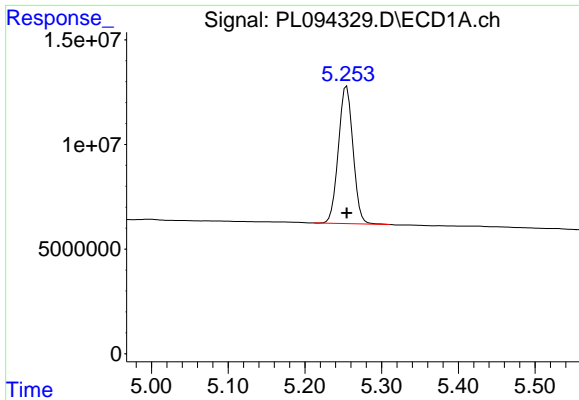
#3 gamma-BHC (Lindane)  
 R.T.: 3.604 min  
 Delta R.T.: 0.000 min  
 Response: 115159200  
 Conc: 24.18 ng/ml



#4 Heptachlor  
 R.T.: 4.913 min  
 Delta R.T.: 0.000 min  
 Response: 86115609  
 Conc: 26.32 ng/ml

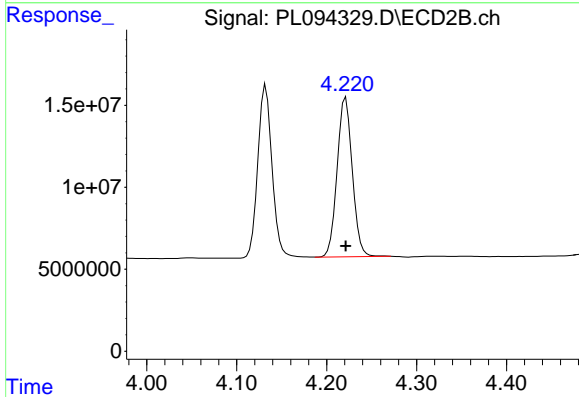


#4 Heptachlor  
 R.T.: 3.942 min  
 Delta R.T.: 0.000 min  
 Response: 116990886  
 Conc: 24.80 ng/ml

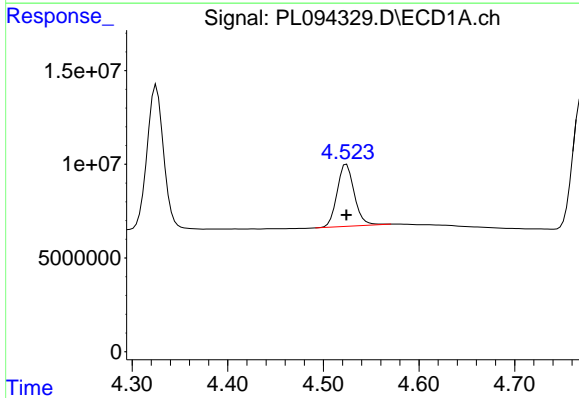


#5 Aldrin  
 R.T.: 5.254 min  
 Delta R.T.: 0.000 min  
 Response: 86928991  
 Conc: 26.28 ng/ml

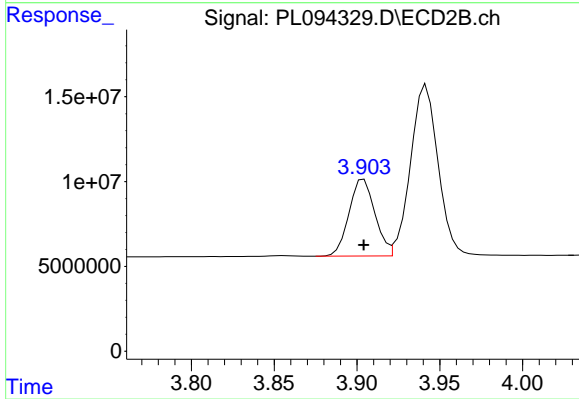
Instrument :  
 ECD\_L  
 ClientSampleId :



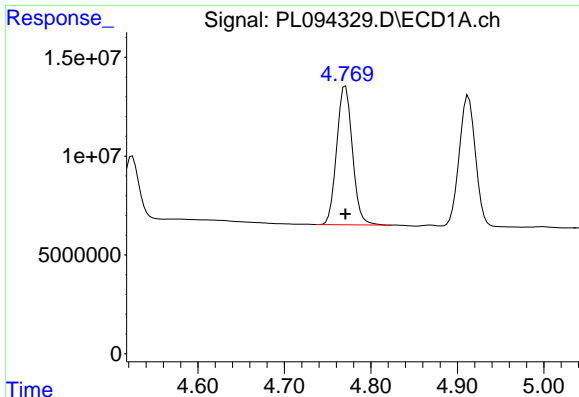
#5 Aldrin  
 R.T.: 4.221 min  
 Delta R.T.: 0.000 min  
 Response: 113898912  
 Conc: 24.52 ng/ml



#6 beta-BHC  
 R.T.: 4.524 min  
 Delta R.T.: 0.000 min  
 Response: 41686104  
 Conc: 27.12 ng/ml



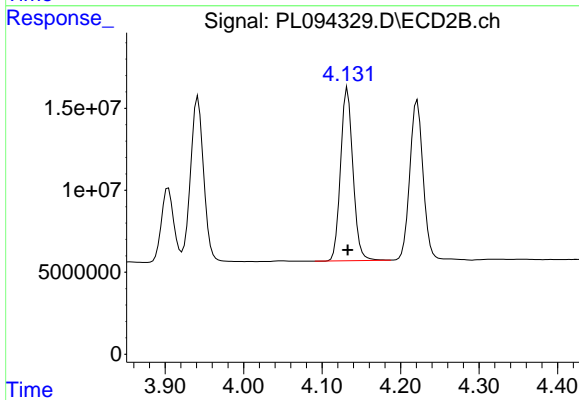
#6 beta-BHC  
 R.T.: 3.904 min  
 Delta R.T.: 0.000 min  
 Response: 49406972  
 Conc: 25.37 ng/ml



#7 delta-BHC

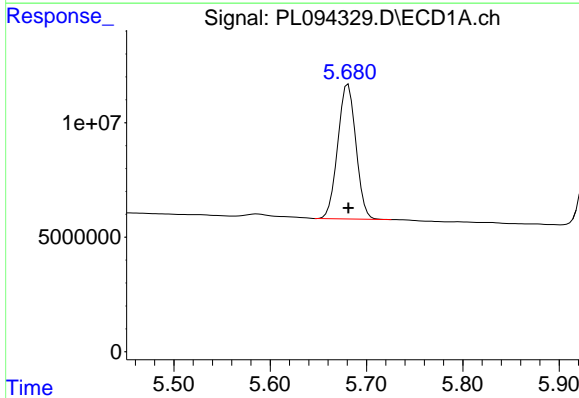
R.T.: 4.771 min  
 Delta R.T.: 0.000 min  
 Response: 88045756  
 Conc: 25.61 ng/ml

Instrument :  
 ECD\_L  
 ClientSampleId :



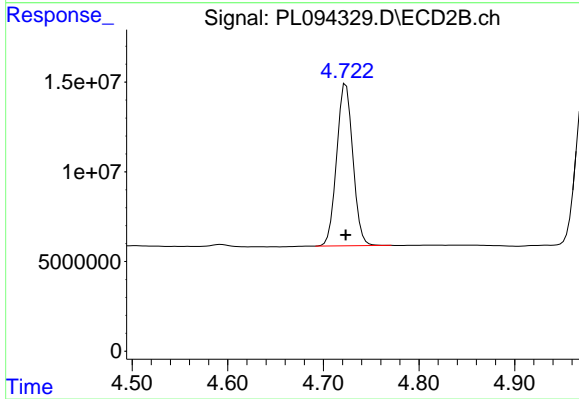
#7 delta-BHC

R.T.: 4.132 min  
 Delta R.T.: 0.000 min  
 Response: 115658334  
 Conc: 24.11 ng/ml



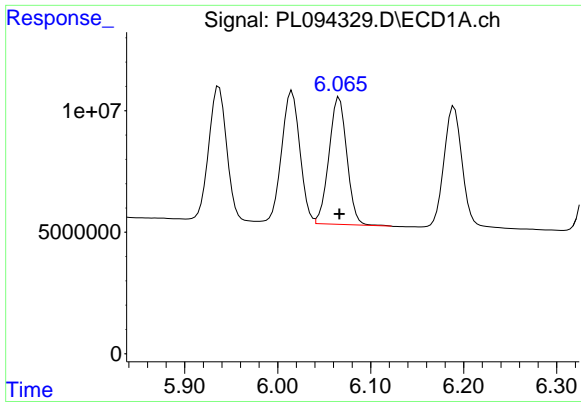
#8 Heptachlor epoxide

R.T.: 5.681 min  
 Delta R.T.: 0.000 min  
 Response: 76876028  
 Conc: 26.44 ng/ml



#8 Heptachlor epoxide

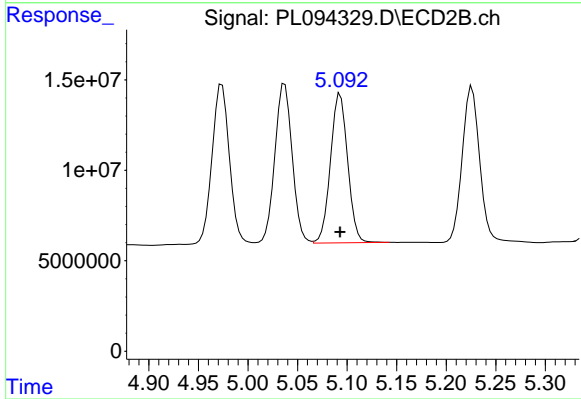
R.T.: 4.724 min  
 Delta R.T.: 0.000 min  
 Response: 106428293  
 Conc: 25.11 ng/ml



#9 Endosulfan I

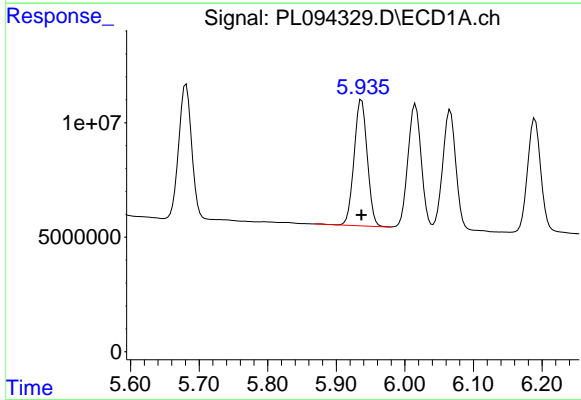
R.T.: 6.066 min  
 Delta R.T.: 0.000 min  
 Response: 69593896  
 Conc: 26.58 ng/ml

Instrument :  
 ECD\_L  
 ClientSampleId :



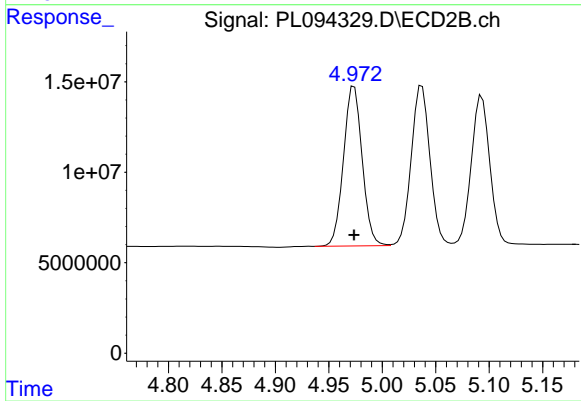
#9 Endosulfan I

R.T.: 5.093 min  
 Delta R.T.: 0.000 min  
 Response: 99489816  
 Conc: 25.10 ng/ml



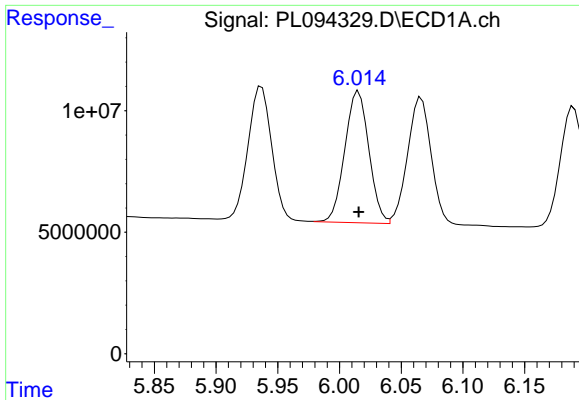
#10 gamma-Chlordane

R.T.: 5.937 min  
 Delta R.T.: 0.000 min  
 Response: 73787635  
 Conc: 26.40 ng/ml



#10 gamma-Chlordane

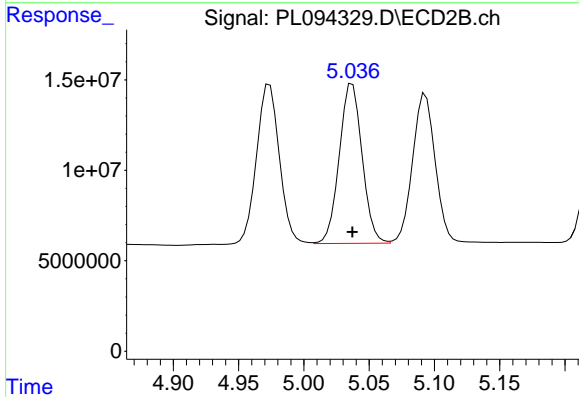
R.T.: 4.974 min  
 Delta R.T.: 0.000 min  
 Response: 107541694  
 Conc: 24.90 ng/ml



#11 alpha-Chlordane

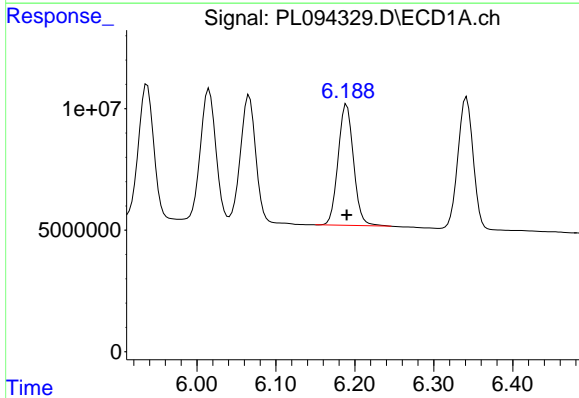
R.T.: 6.016 min  
 Delta R.T.: 0.000 min  
 Response: 73419053  
 Conc: 26.47 ng/ml

Instrument :  
 ECD\_L  
 ClientSampleId :



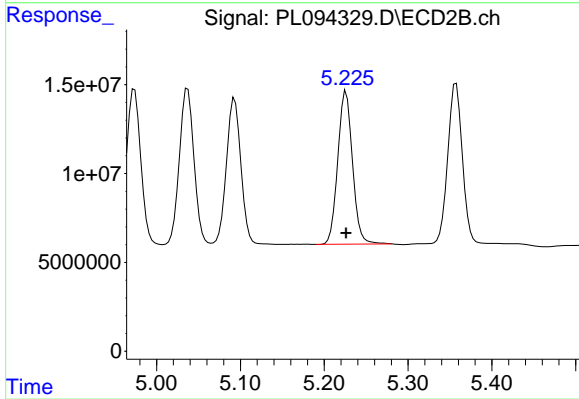
#11 alpha-Chlordane

R.T.: 5.037 min  
 Delta R.T.: 0.000 min  
 Response: 107599652  
 Conc: 25.13 ng/ml



#12 4,4'-DDE

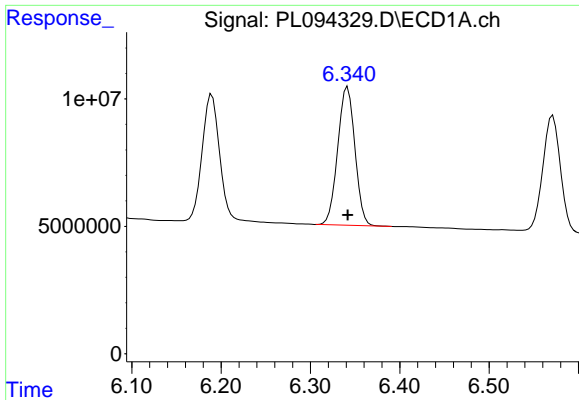
R.T.: 6.190 min  
 Delta R.T.: 0.000 min  
 Response: 67623636  
 Conc: 26.58 ng/ml



#12 4,4'-DDE

R.T.: 5.226 min  
 Delta R.T.: 0.000 min  
 Response: 105345546  
 Conc: 25.09 ng/ml

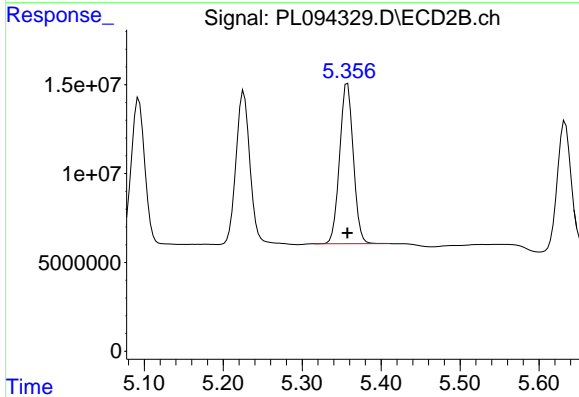




#13 Dieldrin

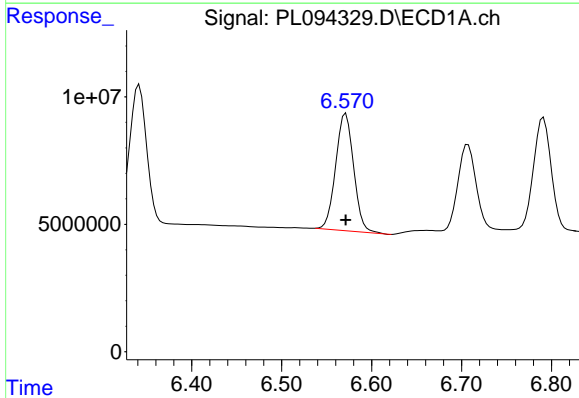
R.T.: 6.342 min  
 Delta R.T.: 0.000 min  
 Response: 72547132  
 Conc: 26.48 ng/ml

Instrument :  
 ECD\_L  
 ClientSampleId :



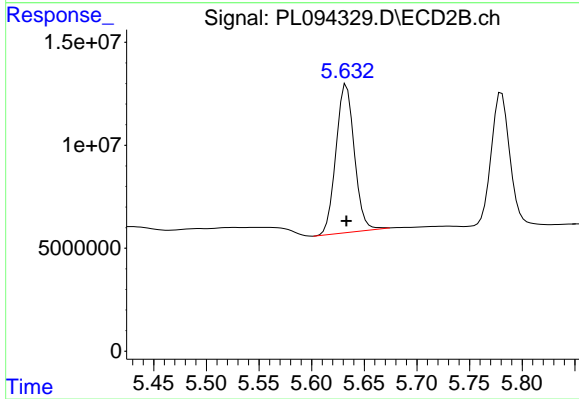
#13 Dieldrin

R.T.: 5.357 min  
 Delta R.T.: 0.000 min  
 Response: 108692758  
 Conc: 24.73 ng/ml



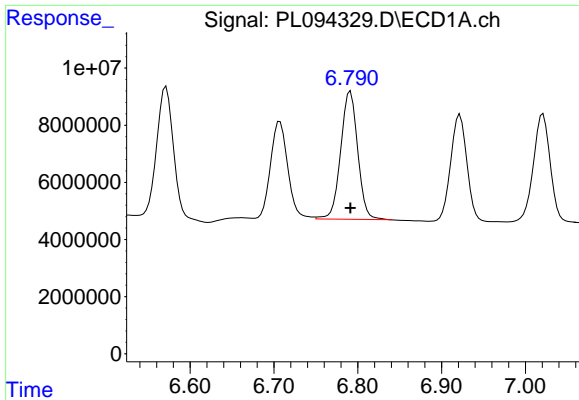
#14 Endrin

R.T.: 6.571 min  
 Delta R.T.: 0.000 min  
 Response: 64078269  
 Conc: 27.02 ng/ml



#14 Endrin

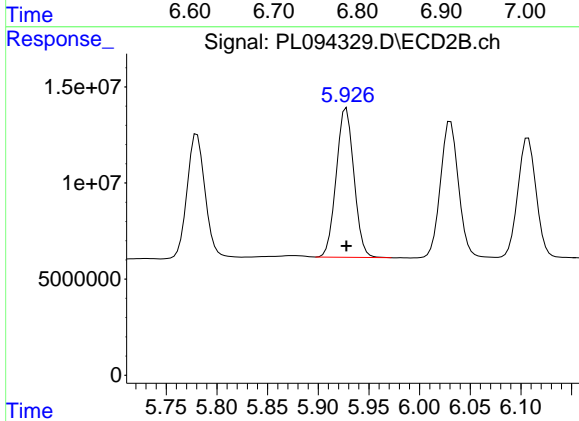
R.T.: 5.633 min  
 Delta R.T.: 0.000 min  
 Response: 87471143  
 Conc: 25.13 ng/ml



#15 Endosulfan II

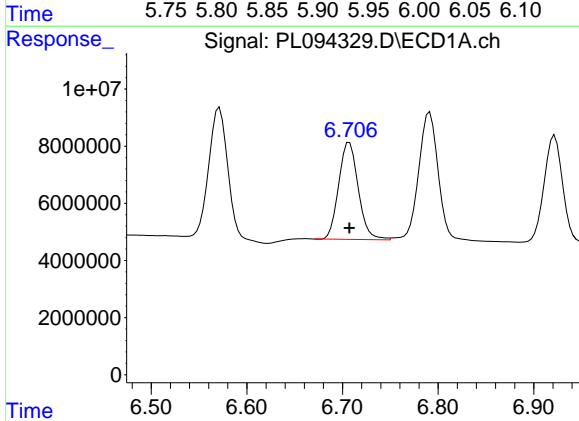
R.T.: 6.791 min  
 Delta R.T.: 0.000 min  
 Response: 63395516  
 Conc: 26.91 ng/ml

Instrument :  
 ECD\_L  
 ClientSampleId :



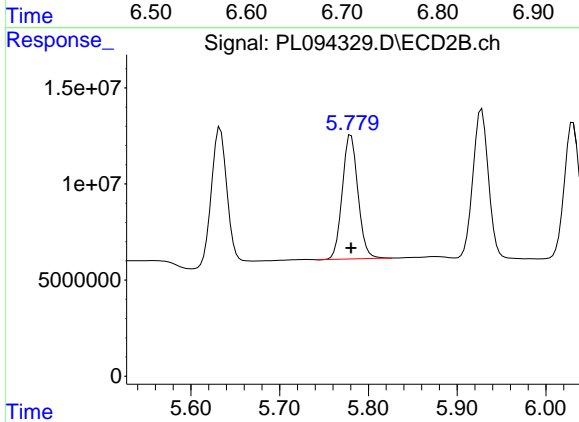
#15 Endosulfan II

R.T.: 5.928 min  
 Delta R.T.: 0.000 min  
 Response: 94176002  
 Conc: 25.18 ng/ml



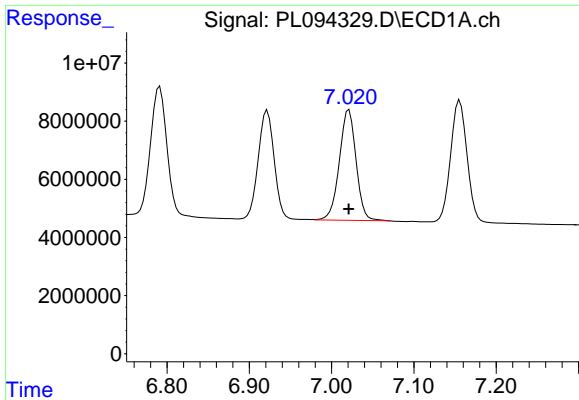
#16 4,4'-DDD

R.T.: 6.707 min  
 Delta R.T.: 0.000 min  
 Response: 48378655  
 Conc: 26.35 ng/ml



#16 4,4'-DDD

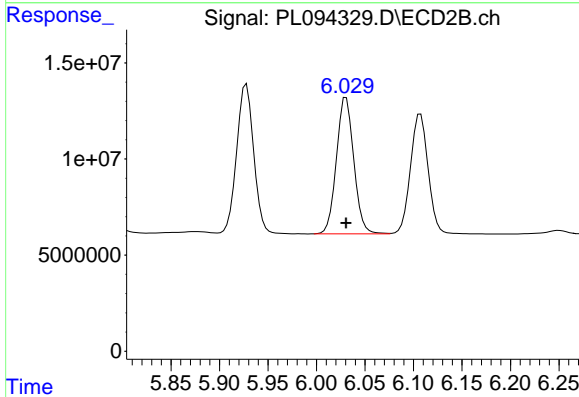
R.T.: 5.780 min  
 Delta R.T.: 0.000 min  
 Response: 79168494  
 Conc: 24.63 ng/ml



#17 4,4'-DDT

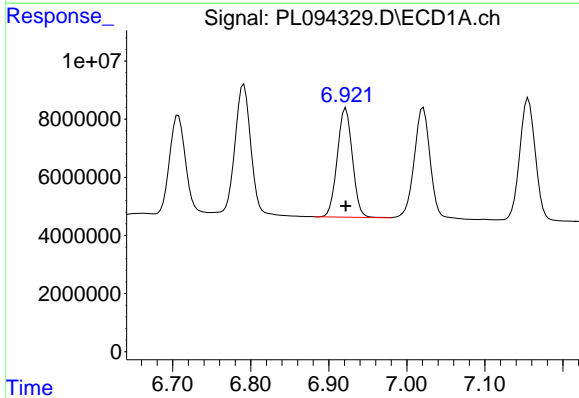
R.T.: 7.021 min  
 Delta R.T.: 0.000 min  
 Response: 53652973  
 Conc: 26.43 ng/ml

Instrument :  
 ECD\_L  
 ClientSampleId :



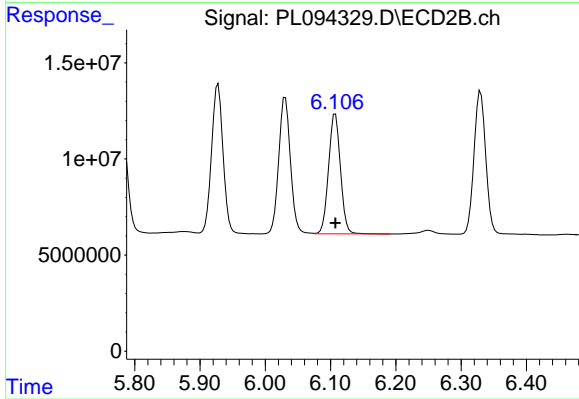
#17 4,4'-DDT

R.T.: 6.031 min  
 Delta R.T.: 0.000 min  
 Response: 88440476  
 Conc: 24.64 ng/ml



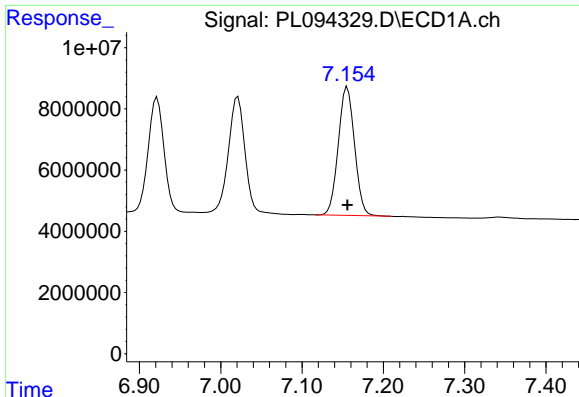
#18 Endrin aldehyde

R.T.: 6.922 min  
 Delta R.T.: 0.000 min  
 Response: 50501352  
 Conc: 27.11 ng/ml



#18 Endrin aldehyde

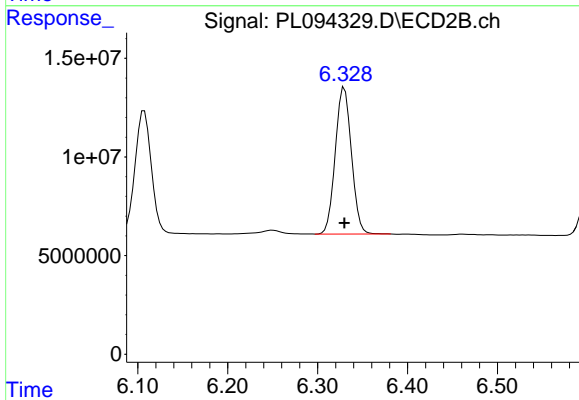
R.T.: 6.107 min  
 Delta R.T.: 0.000 min  
 Response: 78974212  
 Conc: 25.44 ng/ml



#19 Endosulfan Sulfate

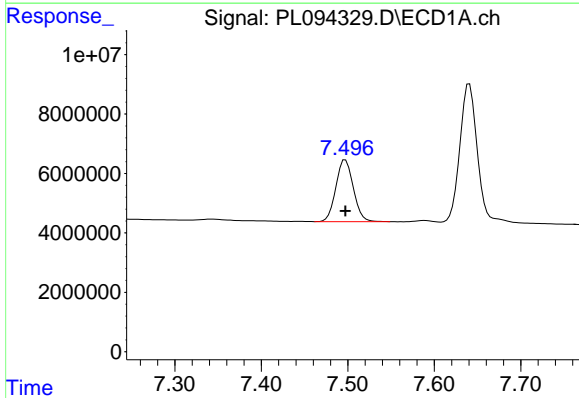
R.T.: 7.156 min  
 Delta R.T.: 0.000 min  
 Response: 58130876  
 Conc: 27.04 ng/ml

Instrument :  
 ECD\_L  
 ClientSampleId :



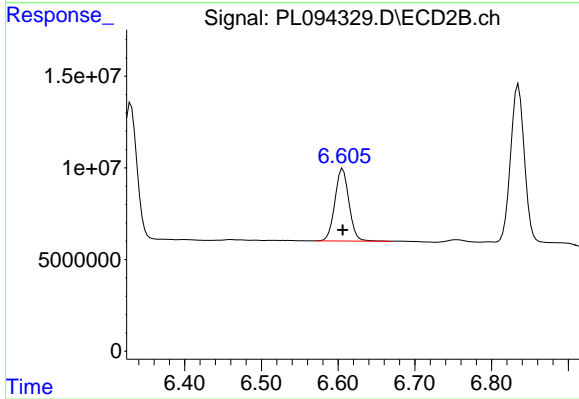
#19 Endosulfan Sulfate

R.T.: 6.330 min  
 Delta R.T.: 0.000 min  
 Response: 92670594  
 Conc: 25.30 ng/ml



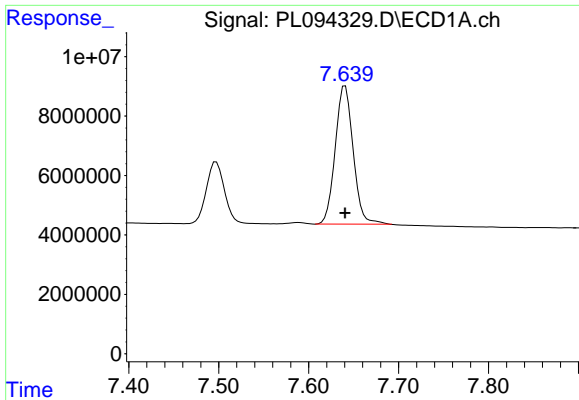
#20 Methoxychlor

R.T.: 7.497 min  
 Delta R.T.: 0.000 min  
 Response: 29029751  
 Conc: 26.94 ng/ml



#20 Methoxychlor

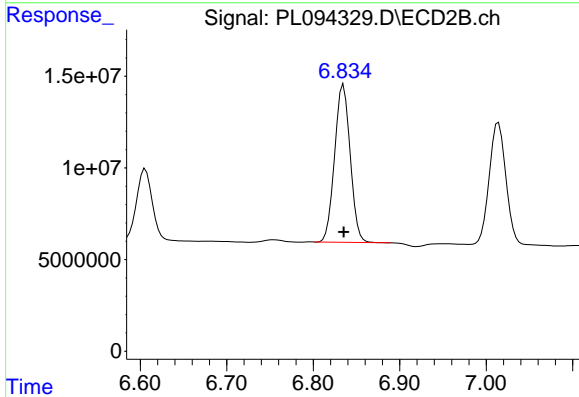
R.T.: 6.606 min  
 Delta R.T.: 0.000 min  
 Response: 50159570  
 Conc: 25.82 ng/ml



#21 Endrin ketone

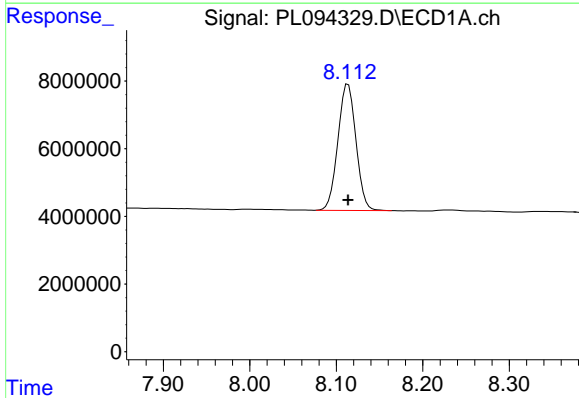
R.T.: 7.641 min  
 Delta R.T.: 0.000 min  
 Response: 64585363  
 Conc: 26.74 ng/ml

Instrument :  
 ECD\_L  
 ClientSampleId :



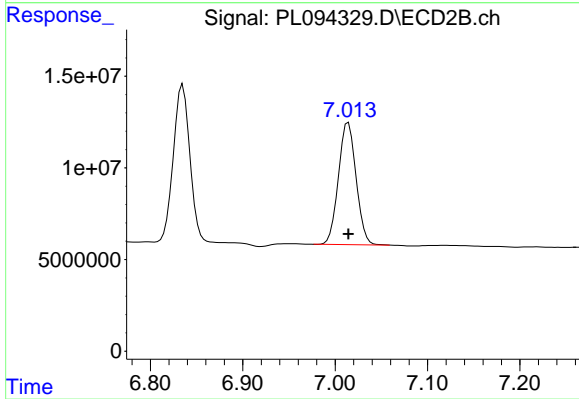
#21 Endrin ketone

R.T.: 6.835 min  
 Delta R.T.: 0.000 min  
 Response: 107037617  
 Conc: 25.19 ng/ml



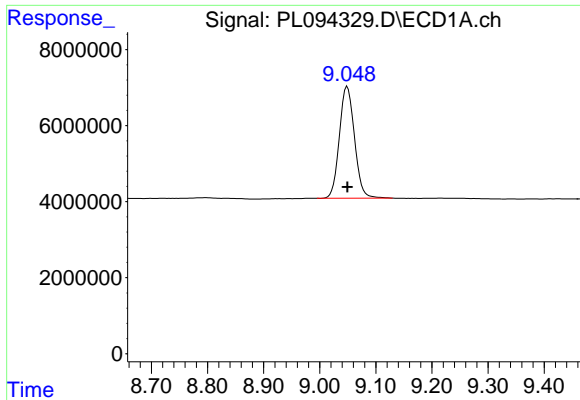
#22 Mirex

R.T.: 8.114 min  
 Delta R.T.: 0.000 min  
 Response: 53883808  
 Conc: 27.56 ng/ml



#22 Mirex

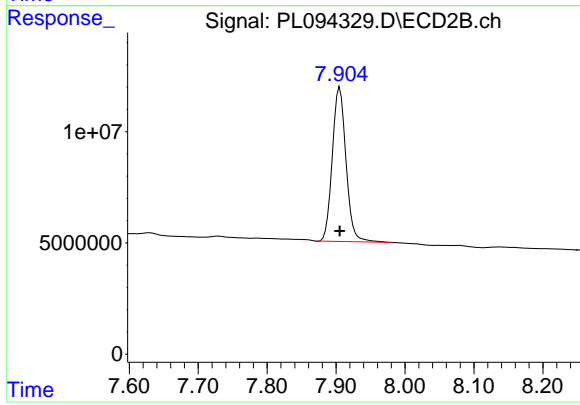
R.T.: 7.014 min  
 Delta R.T.: 0.000 min  
 Response: 88624231  
 Conc: 26.00 ng/ml



#28 Decachlorobiphenyl

R.T.: 9.049 min  
Delta R.T.: 0.000 min  
Response: 55082778  
Conc: 27.10 ng/ml

Instrument :  
ECD\_L  
ClientSampleId :



#28 Decachlorobiphenyl

R.T.: 7.905 min  
Delta R.T.: 0.000 min  
Response: 95505363  
Conc: 25.78 ng/ml