

Data Path : Z:\pestpcbsrv\HPCHEM1\ECD_L\Data\PL022222\
 Data File : PL072900.D
 Signal(s) : Signal #1: ECD1A.ch Signal #2: ECD2B.ch
 Acq On : 22 Feb 2022 19:32
 Operator : AR\AJ
 Sample : N1610-01 10X
 Misc :
 ALS Vial : 26 Sample Multiplier: 1

Instrument :
 ECD_L
 ClientSampleId :

Integration File signal 1: autoint1.e
 Integration File signal 2: autoint2.e
 Quant Time: Feb 23 05:37:19 2022
 Quant Method : Z:\pestpcbsrv\HPCHEM1\ECD_L\methods\PL020722.M
 Quant Title : GC Extractables
 QLast Update : Tue Feb 08 05:14:10 2022
 Response via : Initial Calibration
 Integrator: ChemStation

Volume Inj. : 1 µl
 Signal #1 Phase : ZB-MR2 Signal #2 Phase: ZB-MR1
 Signal #1 Info : 30M x 0.32mm x0.2 Signal #2 Info : 30M x 0.32mm x0.5µm

	Compound	RT#1	RT#2	Resp#1	Resp#2	ng/ml	ng/ml

System Monitoring Compounds							
1)	SA Tetrachlo...	4.551	5.488	1041265	3530721	2.163	2.044
28)	SA Decachlor...	10.312	11.380	1748347	4164939	2.309	2.626
Target Compounds							
3)	MA gamma-BHC...	5.673	6.498f	143034	52381	0.228	0.023 #
5)	MB Aldrin	6.413	0.000	5467712	0	8.468	N.D. #
6)	B beta-BHC	0.000	6.754f	0	11774714	N.D.	11.550 #
7)	B delta-BHC	6.324	7.011	1825475	3781547	2.757	1.651 #
8)	B Heptachlo...	6.986	0.000	32102	0	0.051	N.D. #
9)	A Endosulfan I	7.416f	8.370	559956	225891	0.957	0.129 #
10)	B gamma-Chl...	7.264	8.218	80106	1340262	0.126	0.693 #
11)	B alpha-Chl...	7.331	8.300	415881	1056843	0.653	0.556
12)	B 4,4'-DDE	7.548	0.000	69976	0	0.115	N.D. #
13)	MA Dieldrin	7.686	8.659	359883	1152502	0.570	0.618
15)	B Endosulfa...	8.296	9.118	412030	1594996	0.677	0.949 #
17)	MA 4,4'-DDT	8.394	9.366	257478	297047	0.479	0.194 #
18)	B Endrin al...	0.000	9.247	0	212685	N.D.	0.189 #
19)	B Endosulfa...	8.699	9.498	31974	728764	0.054	0.487 #
20)	A Methoxychlor	9.014f	9.848	395302	59319	1.124	0.073 #
21)	B Endrin ke...	0.000	10.014f	0	104131	N.D.	0.065 #
22)	Mirex	9.404	10.439f	70242	-17768	0.118	N.D. #
23)	Chlordane-1	5.877	0.000	22056	0	1.188	N.D. #
24)	Chlordane-2	6.567	0.000	2216019	0	87.637	N.D. #
25)	Chlordane-3	7.264	8.218	80106	1340262	1.189	4.485 #
26)	Chlordane-4	7.331	8.300	415881	1056843	5.668	2.962 #
27)	Chlordane-5	8.296	9.182	412030	82487	16.060	1.349 #

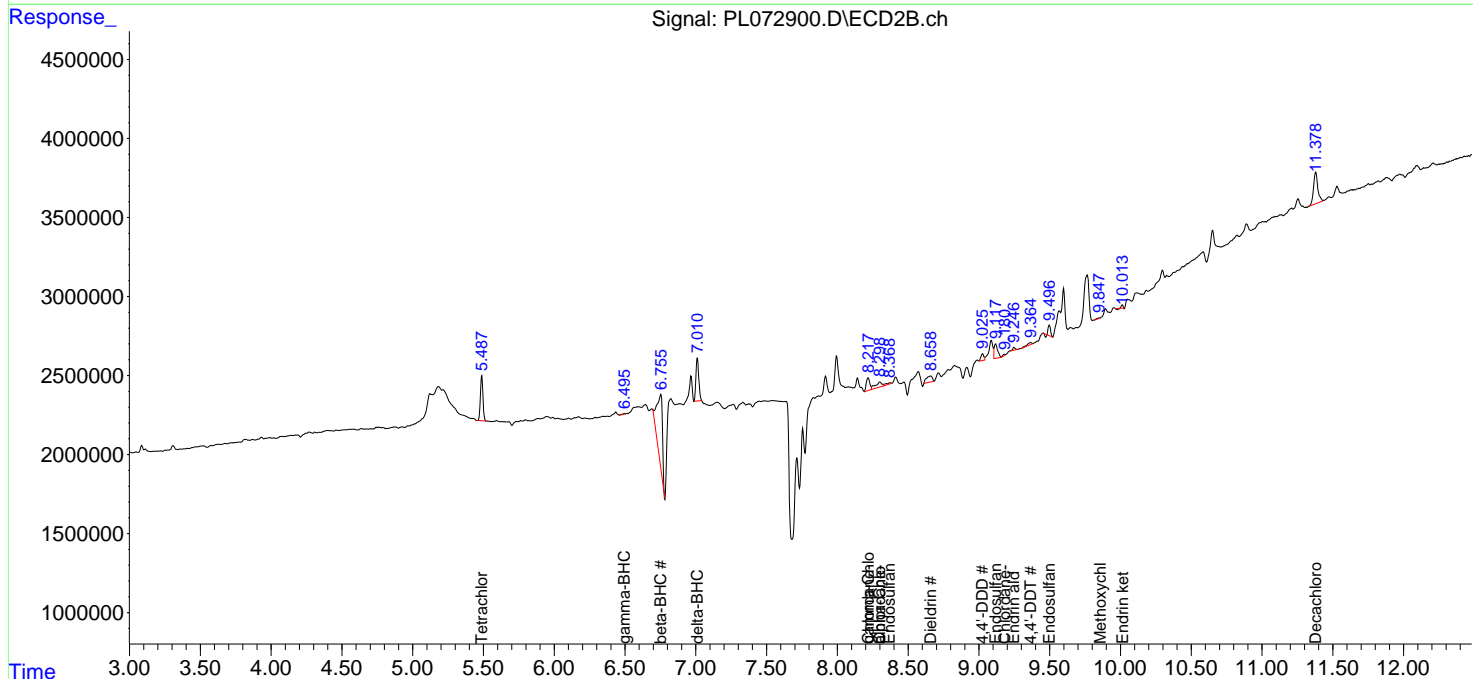
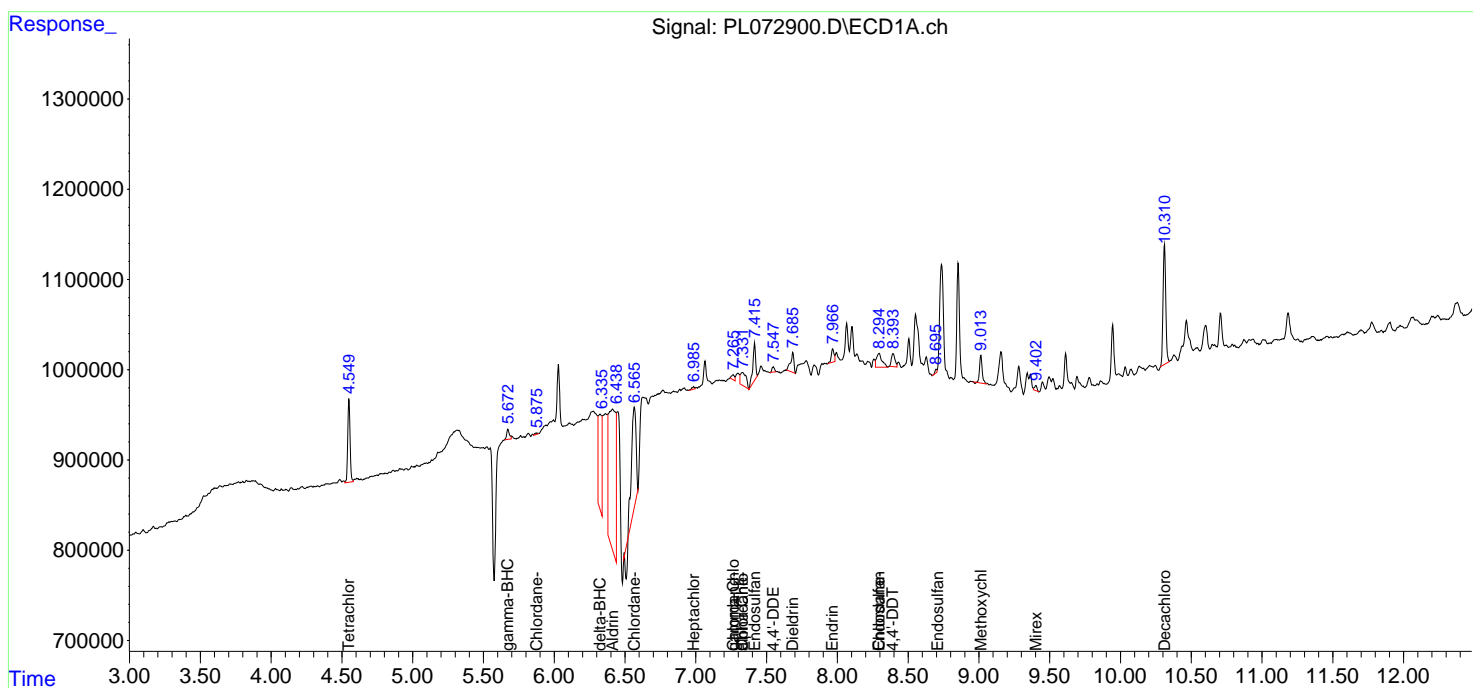
(f)=RT Delta > 1/2 Window (#)=Amounts differ by > 25% (m)=manual int.

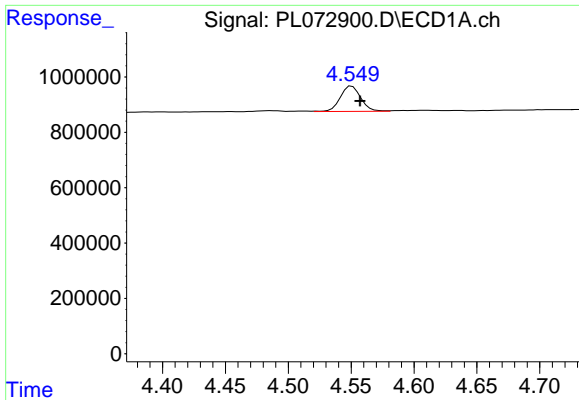
Data Path : Z:\pestpcbsrv\HPCHEM1\ECD_L\Data\PL022222\
 Data File : PL072900.D
 Signal(s) : Signal #1: ECD1A.ch Signal #2: ECD2B.ch
 Acq On : 22 Feb 2022 19:32
 Operator : AR\AJ
 Sample : N1610-01 10X
 Misc :
 ALS Vial : 26 Sample Multiplier: 1

Instrument :
 ECD_L
 ClientSampleId :

Integration File signal 1: autoint1.e
 Integration File signal 2: autoint2.e
 Quant Time: Feb 23 05:37:19 2022
 Quant Method : Z:\pestpcbsrv\HPCHEM1\ECD_L\methods\PL020722.M
 Quant Title : GC Extractables
 QLast Update : Tue Feb 08 05:14:10 2022
 Response via : Initial Calibration
 Integrator: ChemStation

Volume Inj. : 1 µl
 Signal #1 Phase : ZB-MR2 Signal #2 Phase: ZB-MR1
 Signal #1 Info : 30M x 0.32mm x0.2 Signal #2 Info : 30M x 0.32mm x0.5µm

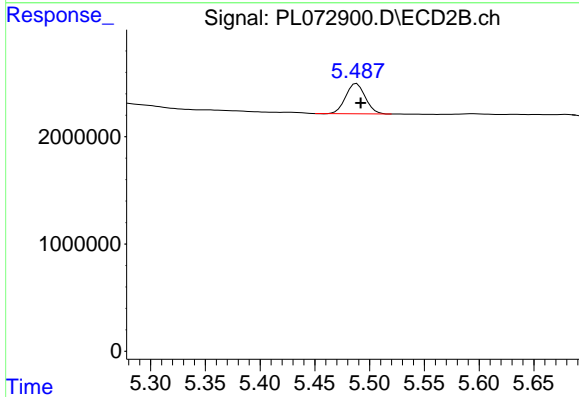




#1 Tetrachloro-m-xylene

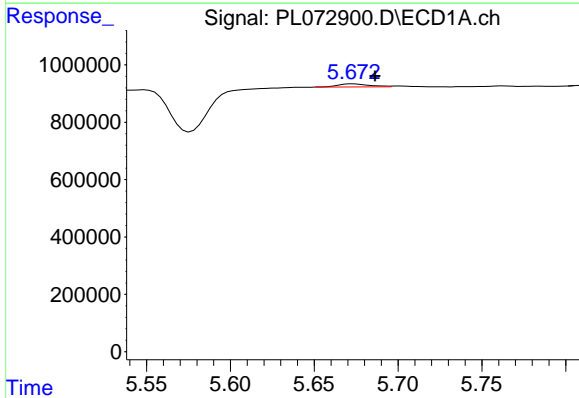
R.T.: 4.551 min
 Delta R.T.: -0.006 min
 Response: 1041265
 Conc: 2.16 ng/ml

Instrument :
 ECD_L
 ClientSampleId :



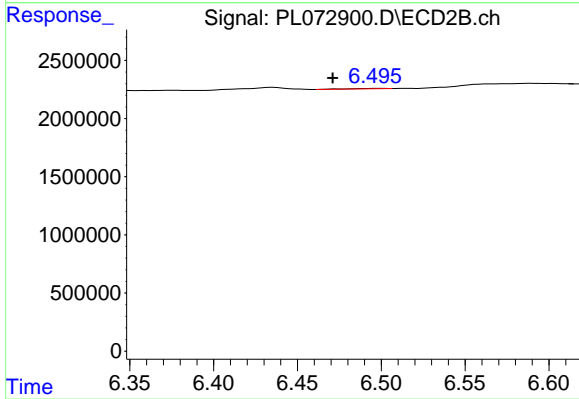
#1 Tetrachloro-m-xylene

R.T.: 5.488 min
 Delta R.T.: -0.004 min
 Response: 3530721
 Conc: 2.04 ng/ml



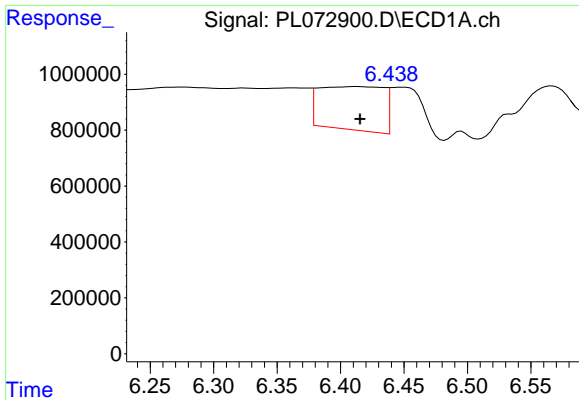
#3 gamma-BHC (Lindane)

R.T.: 5.673 min
 Delta R.T.: -0.013 min
 Response: 143034
 Conc: 0.23 ng/ml



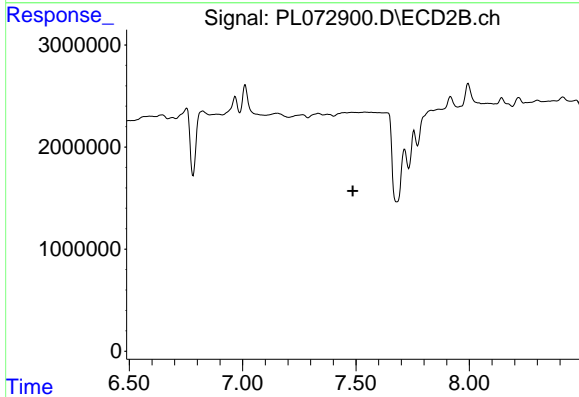
#3 gamma-BHC (Lindane)

R.T.: 6.498 min
 Delta R.T.: 0.027 min
 Response: 52381
 Conc: 0.02 ng/ml

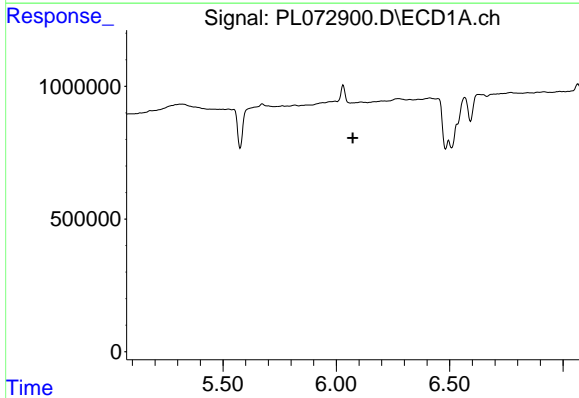


#5 Aldrin
 R.T.: 6.413 min
 Delta R.T.: -0.003 min
 Response: 5467712
 Conc: 8.47 ng/ml

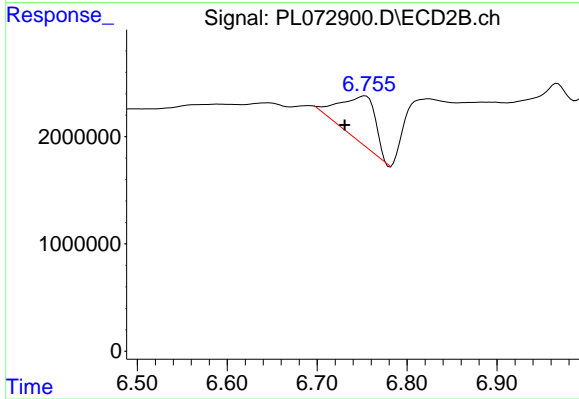
Instrument :
 ECD_L
 ClientSampleId :



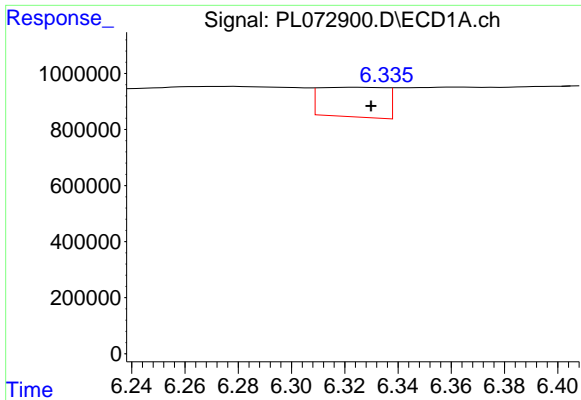
#5 Aldrin
 R.T.: 0.000 min
 Exp R.T. : 7.486 min
 Response: 0
 Conc: N.D.



#6 beta-BHC
 R.T.: 0.000 min
 Exp R.T. : 6.073 min
 Response: 0
 Conc: N.D.



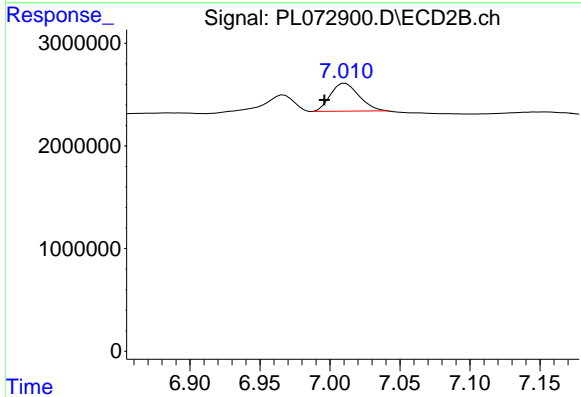
#6 beta-BHC
 R.T.: 6.754 min
 Delta R.T.: 0.023 min
 Response: 11774714
 Conc: 11.55 ng/ml



#7 delta-BHC

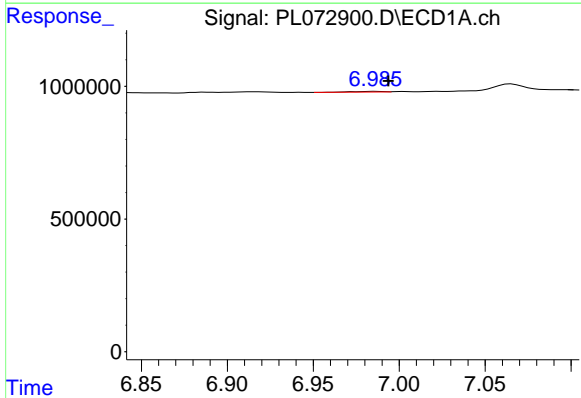
R.T.: 6.324 min
 Delta R.T.: -0.005 min
 Response: 1825475
 Conc: 2.76 ng/ml

Instrument :
 ECD_L
 ClientSampleId :



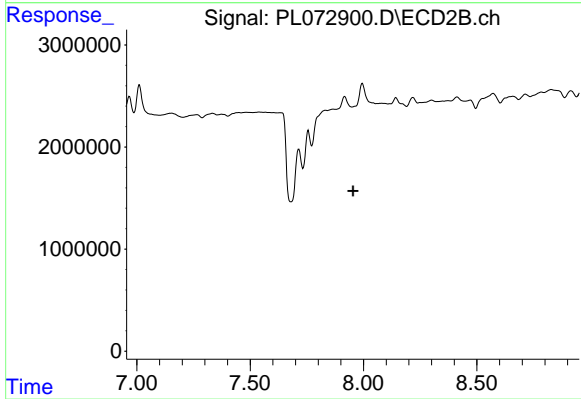
#7 delta-BHC

R.T.: 7.011 min
 Delta R.T.: 0.015 min
 Response: 3781547
 Conc: 1.65 ng/ml



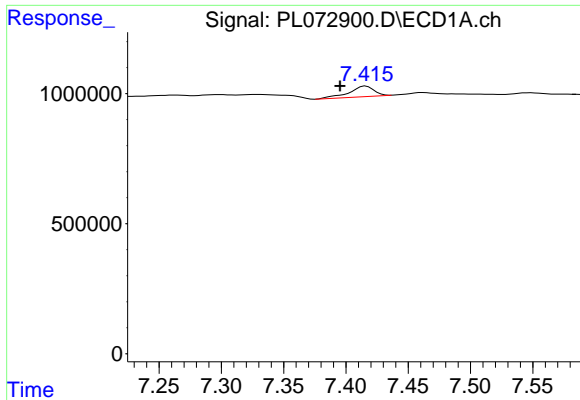
#8 Heptachlor epoxide

R.T.: 6.986 min
 Delta R.T.: -0.007 min
 Response: 32102
 Conc: 0.05 ng/ml



#8 Heptachlor epoxide

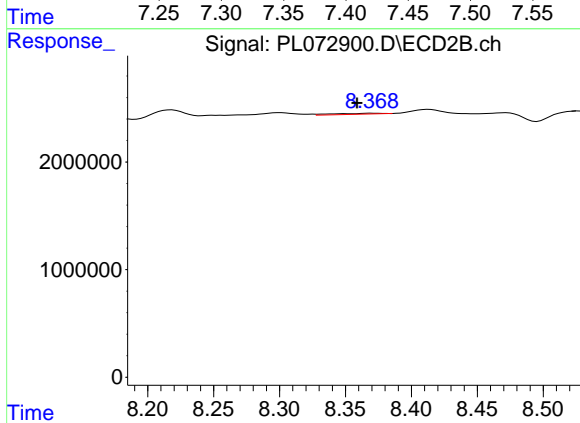
R.T.: 0.000 min
 Exp R.T. : 7.954 min
 Response: 0
 Conc: N.D.



#9 Endosulfan I

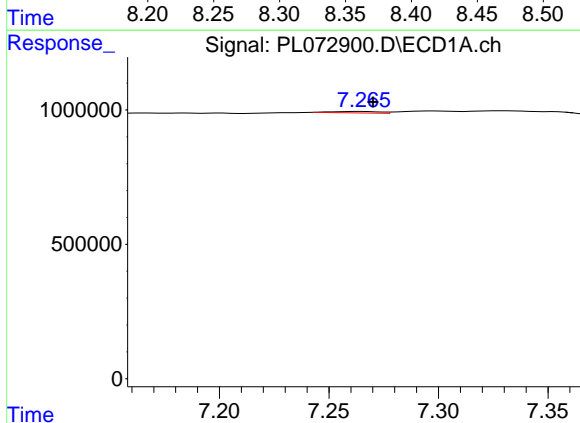
R.T.: 7.416 min
 Delta R.T.: 0.021 min
 Response: 559956
 Conc: 0.96 ng/ml

Instrument :
 ECD_L
 ClientSampleId :



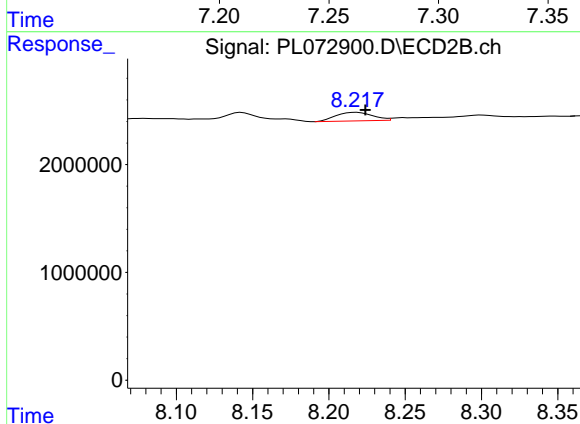
#9 Endosulfan I

R.T.: 8.370 min
 Delta R.T.: 0.011 min
 Response: 225891
 Conc: 0.13 ng/ml



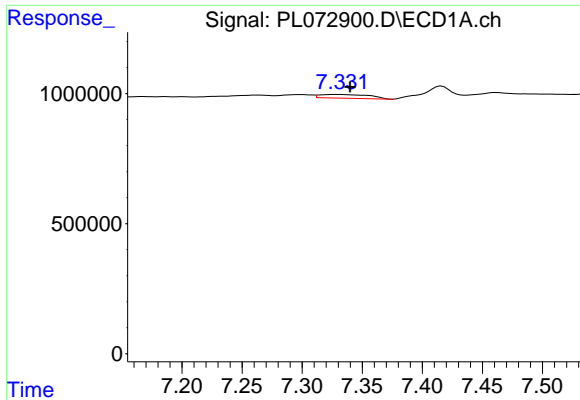
#10 gamma-Chlordane

R.T.: 7.264 min
 Delta R.T.: -0.006 min
 Response: 80106
 Conc: 0.13 ng/ml



#10 gamma-Chlordane

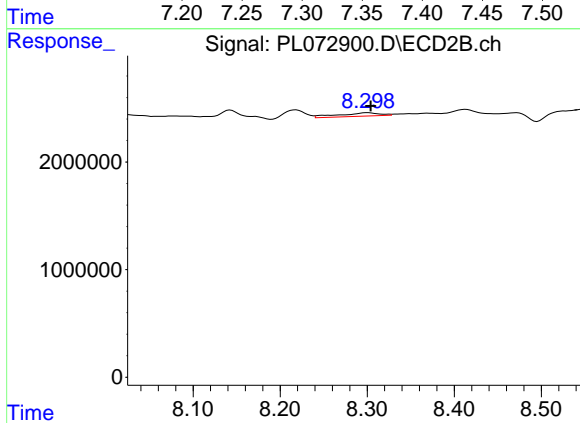
R.T.: 8.218 min
 Delta R.T.: -0.006 min
 Response: 1340262
 Conc: 0.69 ng/ml



#11 alpha-Chlordane

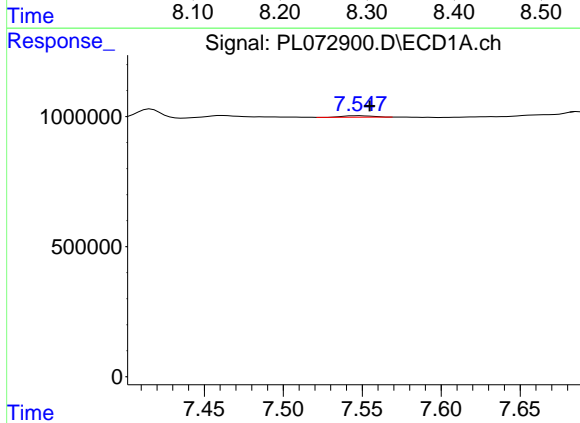
R.T.: 7.331 min
 Delta R.T.: -0.009 min
 Response: 415881
 Conc: 0.65 ng/ml

Instrument :
 ECD_L
 ClientSampleId :



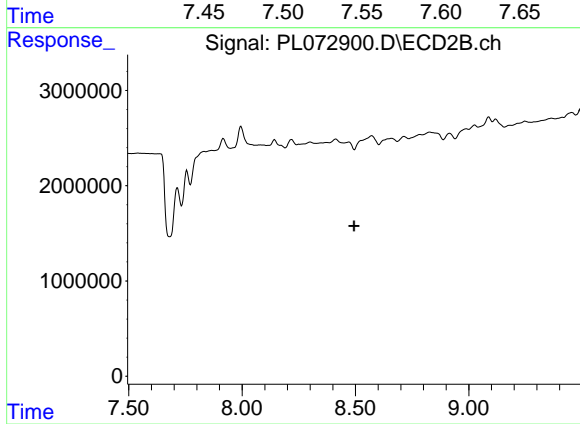
#11 alpha-Chlordane

R.T.: 8.300 min
 Delta R.T.: -0.004 min
 Response: 1056843
 Conc: 0.56 ng/ml



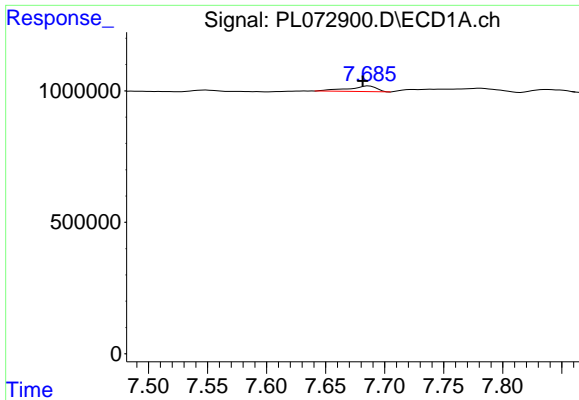
#12 4,4'-DDE

R.T.: 7.548 min
 Delta R.T.: -0.007 min
 Response: 69976
 Conc: 0.12 ng/ml



#12 4,4'-DDE

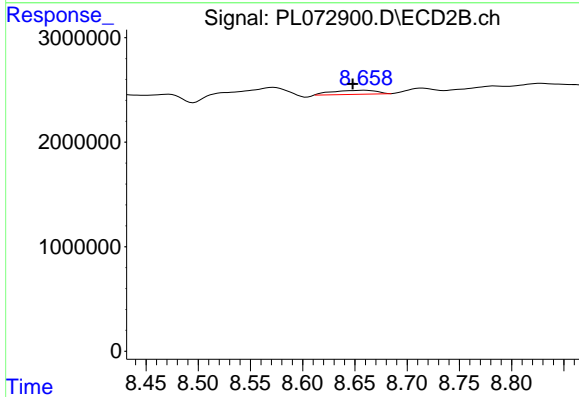
R.T.: 0.000 min
 Exp R.T. : 8.494 min
 Response: 0
 Conc: N.D.



#13 Dieldrin

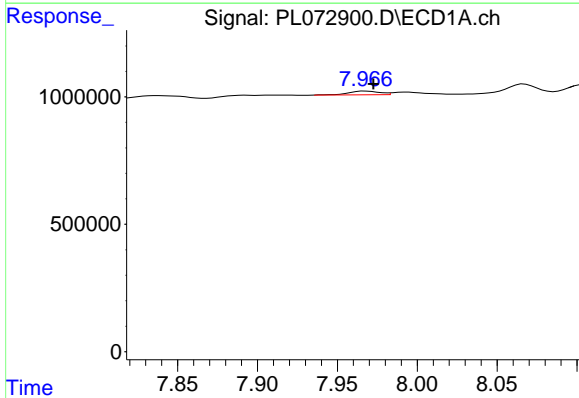
R.T.: 7.686 min
 Delta R.T.: 0.005 min
 Response: 359883
 Conc: 0.57 ng/ml

Instrument :
 ECD_L
 ClientSampleId :



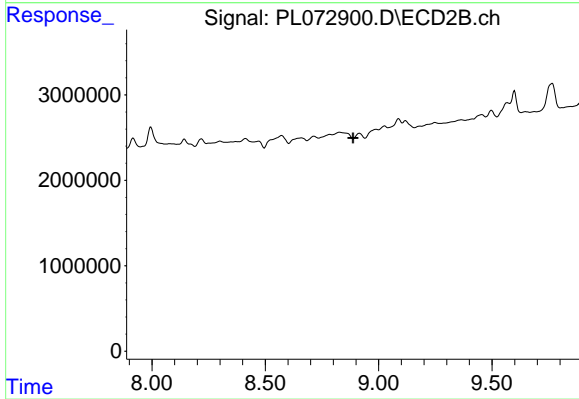
#13 Dieldrin

R.T.: 8.659 min
 Delta R.T.: 0.011 min
 Response: 1152502
 Conc: 0.62 ng/ml



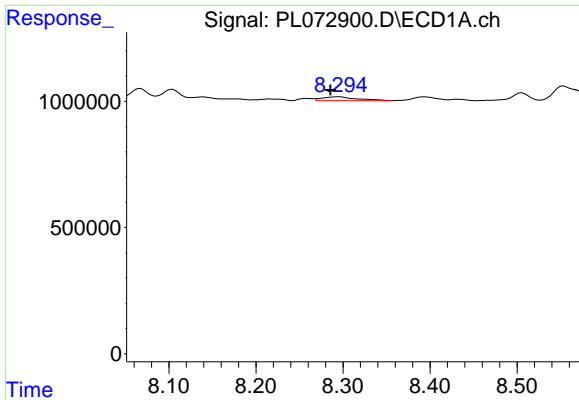
#14 Endrin

R.T.: 7.968 min
 Delta R.T.: -0.005 min
 Response: 193476
 Conc: 0.33 ng/ml



#14 Endrin

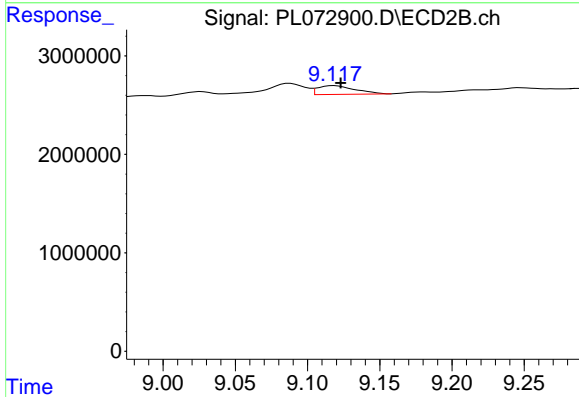
R.T.: 8.915 min
 Delta R.T.: 0.028 min
 Response: -586319
 Conc: N.D.



#15 Endosulfan II

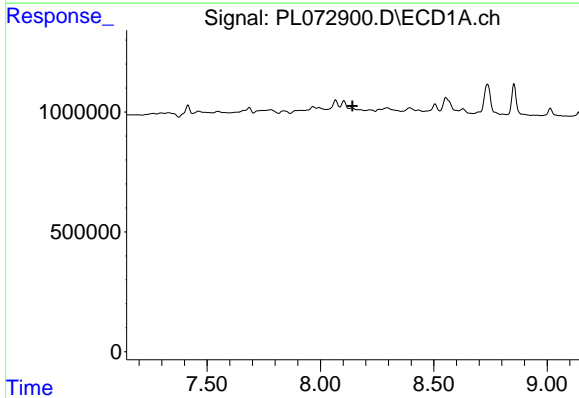
R.T.: 8.296 min
 Delta R.T.: 0.010 min
 Response: 412030
 Conc: 0.68 ng/ml

Instrument :
 ECD_L
 ClientSampleId :



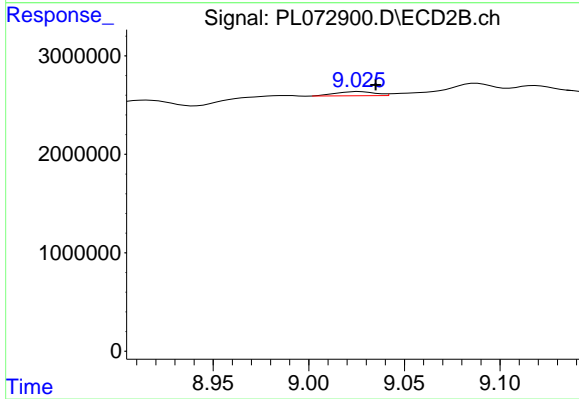
#15 Endosulfan II

R.T.: 9.118 min
 Delta R.T.: -0.005 min
 Response: 1594996
 Conc: 0.95 ng/ml



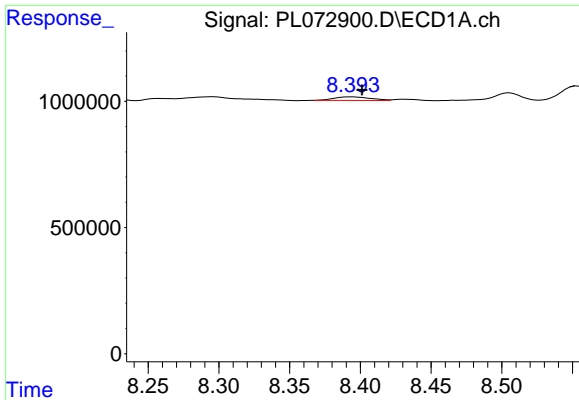
#16 4,4'-DDD

R.T.: 8.139 min
 Delta R.T.: -0.003 min
 Response: -240267
 Conc: N.D.



#16 4,4'-DDD

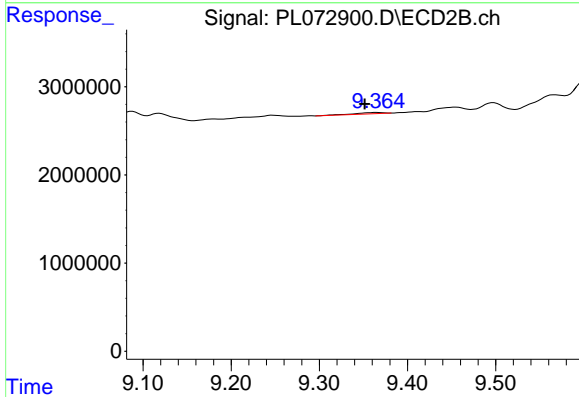
R.T.: 9.026 min
 Delta R.T.: -0.009 min
 Response: 601487
 Conc: 0.43 ng/ml



#17 4,4'-DDT

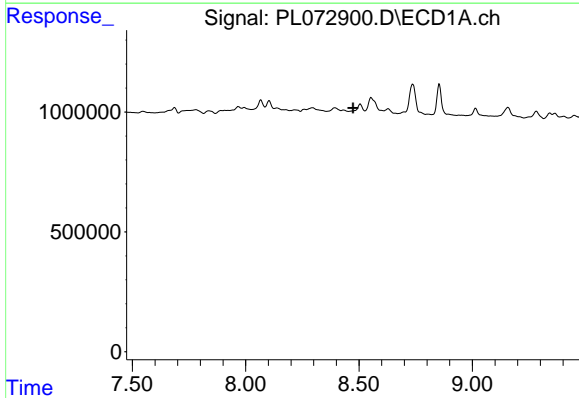
R.T.: 8.394 min
 Delta R.T.: -0.007 min
 Response: 257478
 Conc: 0.48 ng/ml

Instrument :
 ECD_L
 ClientSampleId :



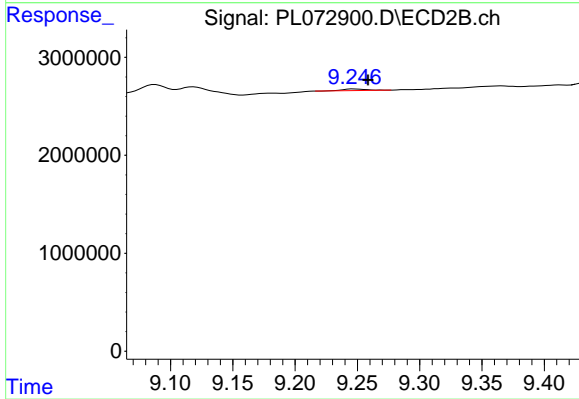
#17 4,4'-DDT

R.T.: 9.366 min
 Delta R.T.: 0.014 min
 Response: 297047
 Conc: 0.19 ng/ml



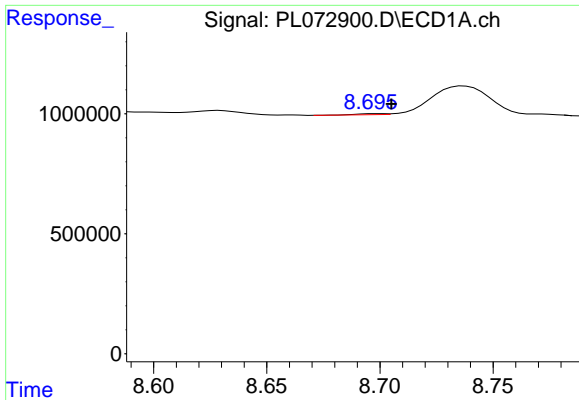
#18 Endrin aldehyde

R.T.: 0.000 min
 Exp R.T. : 8.474 min
 Response: 0
 Conc: N.D.



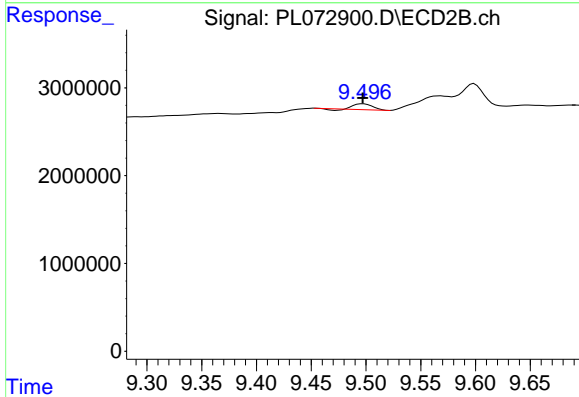
#18 Endrin aldehyde

R.T.: 9.247 min
 Delta R.T.: -0.011 min
 Response: 212685
 Conc: 0.19 ng/ml

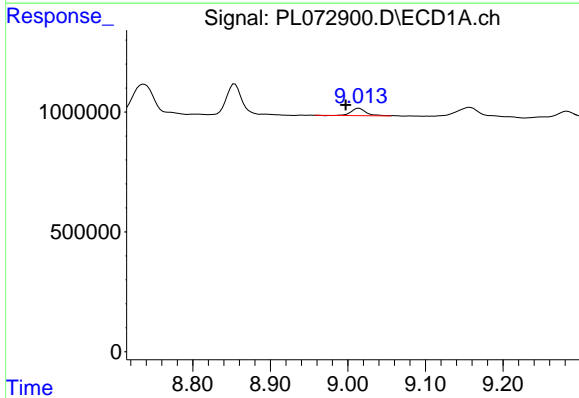


#19 Endosulfan Sulfate
 R.T.: 8.699 min
 Delta R.T.: -0.006 min
 Response: 31974
 Conc: 0.05 ng/ml

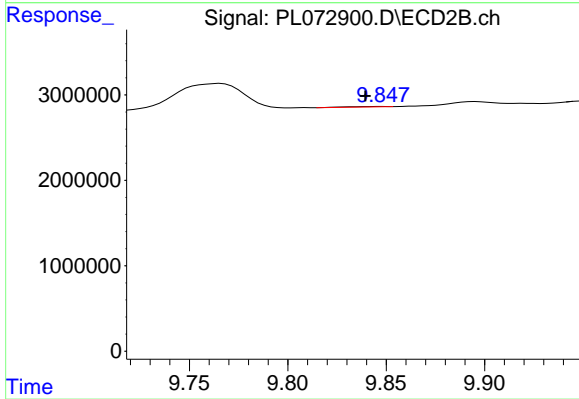
Instrument :
 ECD_L
 ClientSampleId :



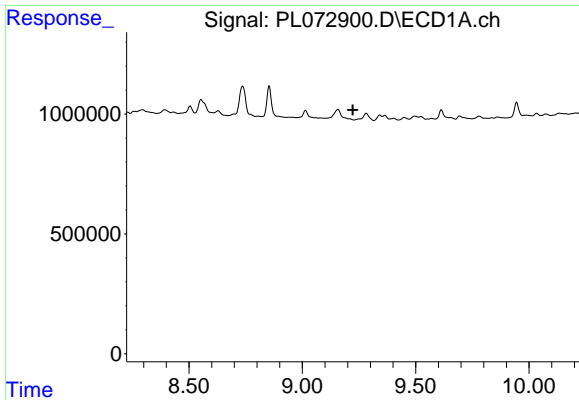
#19 Endosulfan Sulfate
 R.T.: 9.498 min
 Delta R.T.: 0.000 min
 Response: 728764
 Conc: 0.49 ng/ml



#20 Methoxychlor
 R.T.: 9.014 min
 Delta R.T.: 0.017 min
 Response: 395302
 Conc: 1.12 ng/ml



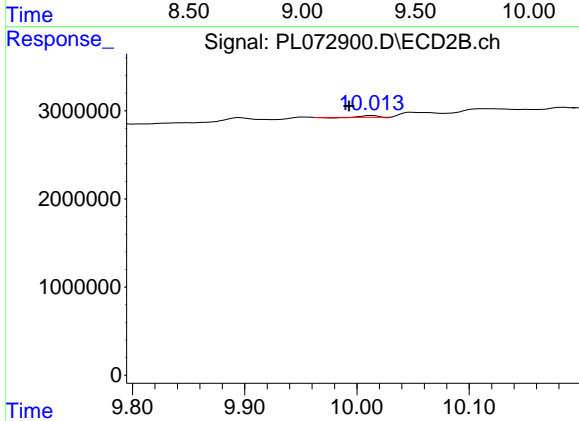
#20 Methoxychlor
 R.T.: 9.848 min
 Delta R.T.: 0.009 min
 Response: 59319
 Conc: 0.07 ng/ml



#21 Endrin ketone

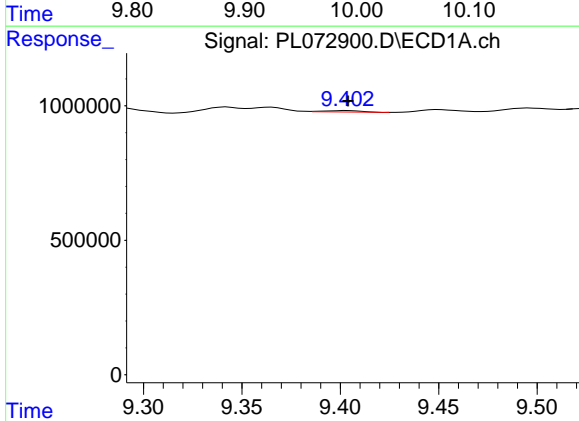
R.T.: 0.000 min
 Exp R.T.: 9.223 min
 Response: 0
 Conc: N.D.

Instrument :
 ECD_L
 ClientSampleId :



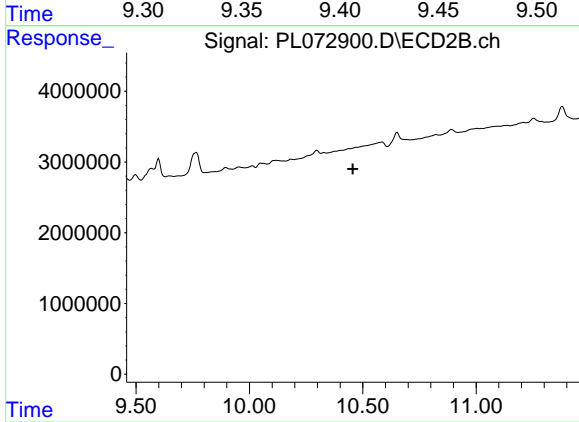
#21 Endrin ketone

R.T.: 10.014 min
 Delta R.T.: 0.021 min
 Response: 104131
 Conc: 0.07 ng/ml



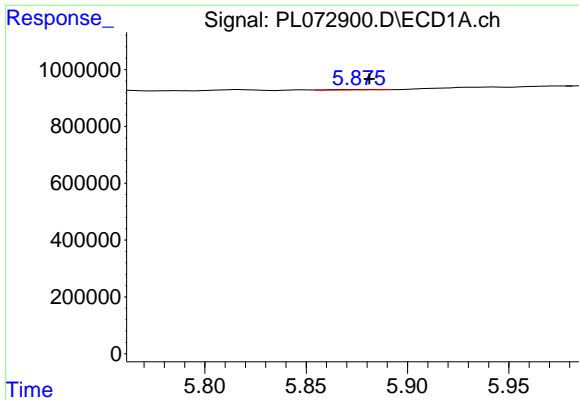
#22 Mirex

R.T.: 9.404 min
 Delta R.T.: 0.000 min
 Response: 70242
 Conc: 0.12 ng/ml



#22 Mirex

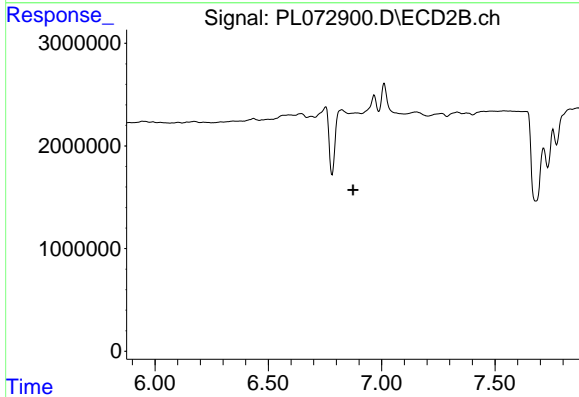
R.T.: 10.439 min
 Delta R.T.: -0.017 min
 Response: -17768
 Conc: N.D.



#23 Chlordane-1

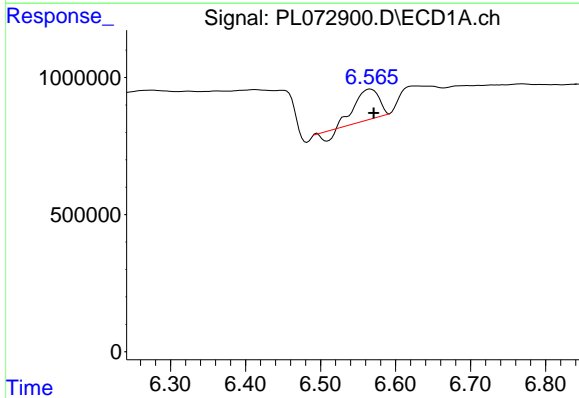
R.T.: 5.877 min
 Delta R.T.: -0.005 min
 Response: 22056
 Conc: 1.19 ng/ml

Instrument :
 ECD_L
 ClientSampleId :



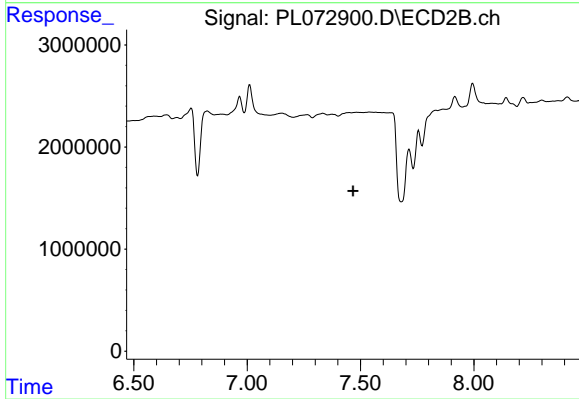
#23 Chlordane-1

R.T.: 0.000 min
 Exp R.T. : 6.874 min
 Response: 0
 Conc: N.D.



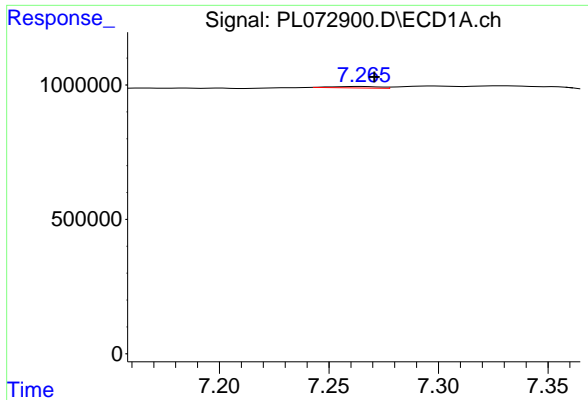
#24 Chlordane-2

R.T.: 6.567 min
 Delta R.T.: -0.004 min
 Response: 2216019
 Conc: 87.64 ng/ml



#24 Chlordane-2

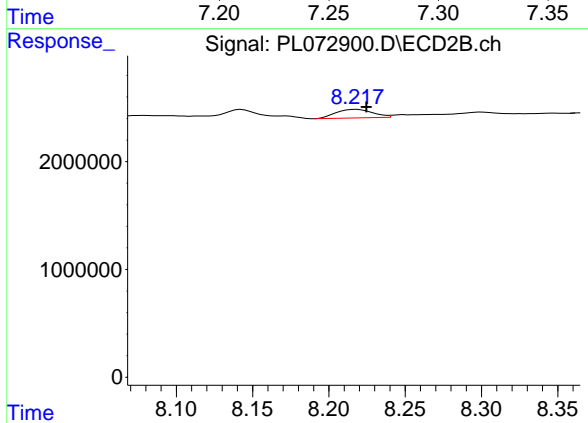
R.T.: 0.000 min
 Exp R.T. : 7.467 min
 Response: 0
 Conc: N.D.



#25 Chlordane-3

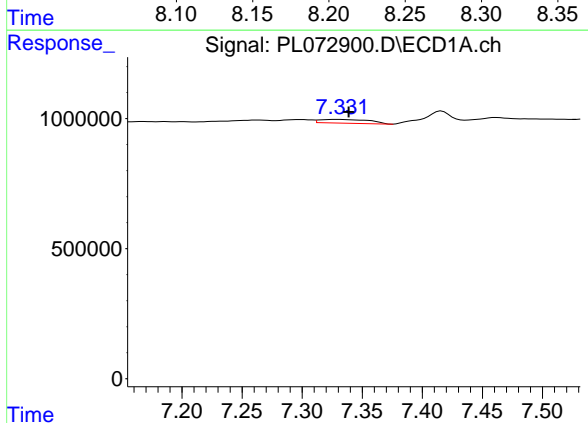
R.T.: 7.264 min
 Delta R.T.: -0.007 min
 Response: 80106
 Conc: 1.19 ng/ml

Instrument :
 ECD_L
 ClientSampleId :



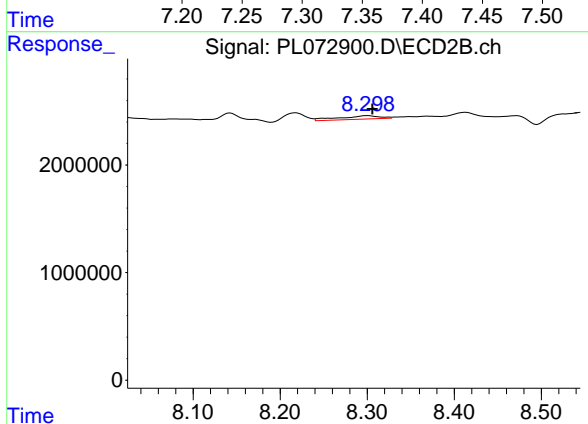
#25 Chlordane-3

R.T.: 8.218 min
 Delta R.T.: -0.006 min
 Response: 1340262
 Conc: 4.48 ng/ml



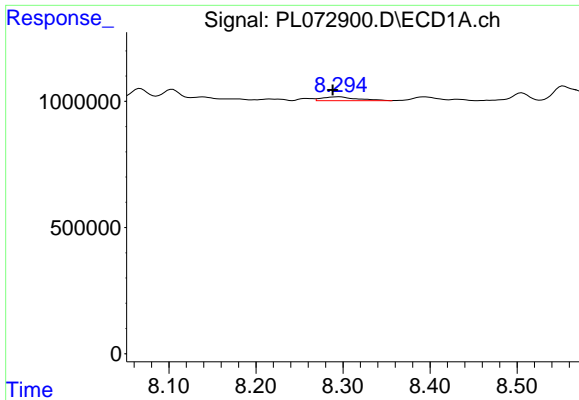
#26 Chlordane-4

R.T.: 7.331 min
 Delta R.T.: -0.008 min
 Response: 415881
 Conc: 5.67 ng/ml



#26 Chlordane-4

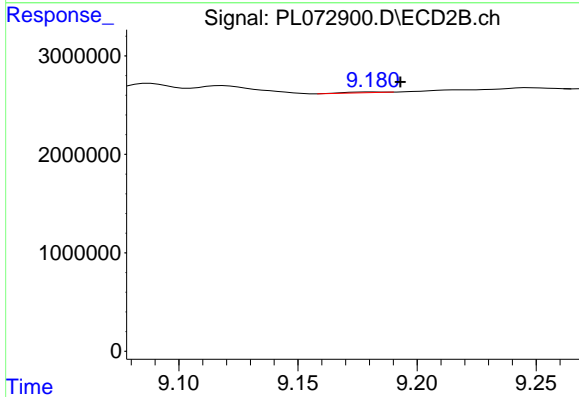
R.T.: 8.300 min
 Delta R.T.: -0.005 min
 Response: 1056843
 Conc: 2.96 ng/ml



#27 Chlordane-5

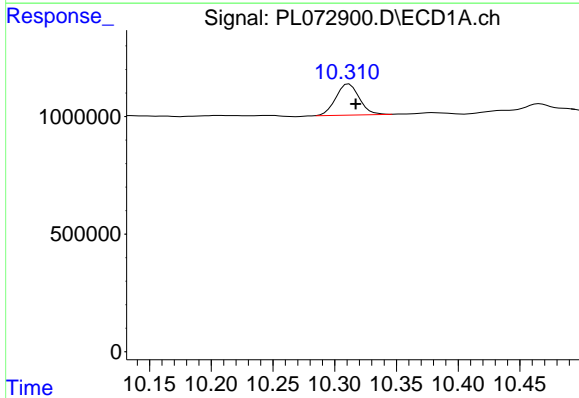
R.T.: 8.296 min
 Delta R.T.: 0.007 min
 Response: 412030
 Conc: 16.06 ng/ml

Instrument :
 ECD_L
 ClientSampleId :



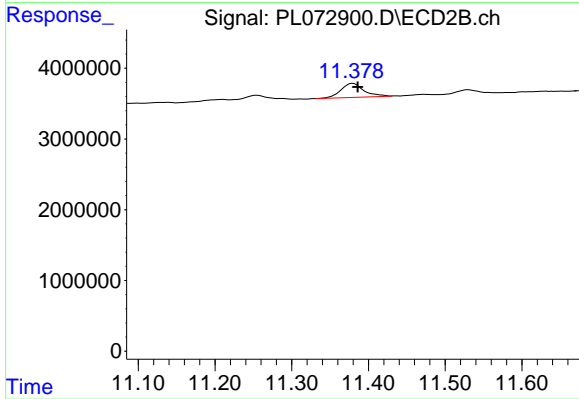
#27 Chlordane-5

R.T.: 9.182 min
 Delta R.T.: -0.011 min
 Response: 82487
 Conc: 1.35 ng/ml



#28 Decachlorobiphenyl

R.T.: 10.312 min
 Delta R.T.: -0.005 min
 Response: 1748347
 Conc: 2.31 ng/ml



#28 Decachlorobiphenyl

R.T.: 11.380 min
 Delta R.T.: -0.006 min
 Response: 4164939
 Conc: 2.63 ng/ml