

Data Path : Z:\pestpcbsrv\HPCHEM1\ECD_L\Data\PL022322\
 Data File : PL072924.D
 Signal(s) : Signal #1: ECD1A.ch Signal #2: ECD2B.ch
 Acq On : 23 Feb 2022 08:49
 Operator : AR\AJ
 Sample : I.BLK
 Misc :
 ALS Vial : 2 Sample Multiplier: 1

Instrument :
 ECD_L
 ClientSampleId :
 I.BLK

Integration File signal 1: autoint1.e
 Integration File signal 2: autoint2.e
 Quant Time: Feb 24 00:11:01 2022
 Quant Method : Z:\pestpcbsrv\HPCHEM1\ECD_L\methods\PL020722.M
 Quant Title : GC Extractables
 QLast Update : Tue Feb 08 05:14:10 2022
 Response via : Initial Calibration
 Integrator: ChemStation

Volume Inj. : 1 µl
 Signal #1 Phase : ZB-MR2 Signal #2 Phase: ZB-MR1
 Signal #1 Info : 30M x 0.32mm x0.2 Signal #2 Info : 30M x 0.32mm x0.5µm

Compound	RT#1	RT#2	Resp#1	Resp#2	ng/ml	ng/ml

System Monitoring Compounds						
1) SA Tetrachlo...	4.552	5.488	11361336	41394318	23.595	23.964
28) SA Decachlor...	10.314	11.381	18765669	40667812	24.788	25.645

Target Compounds

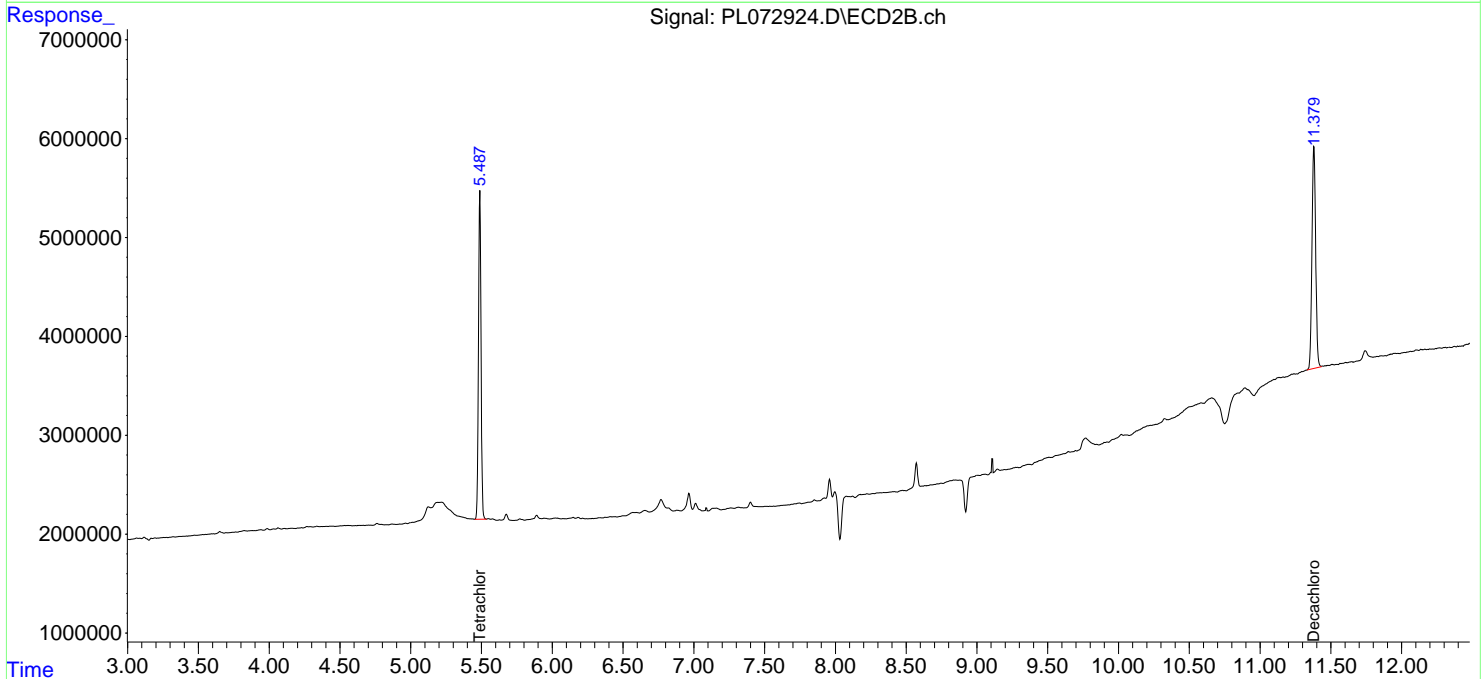
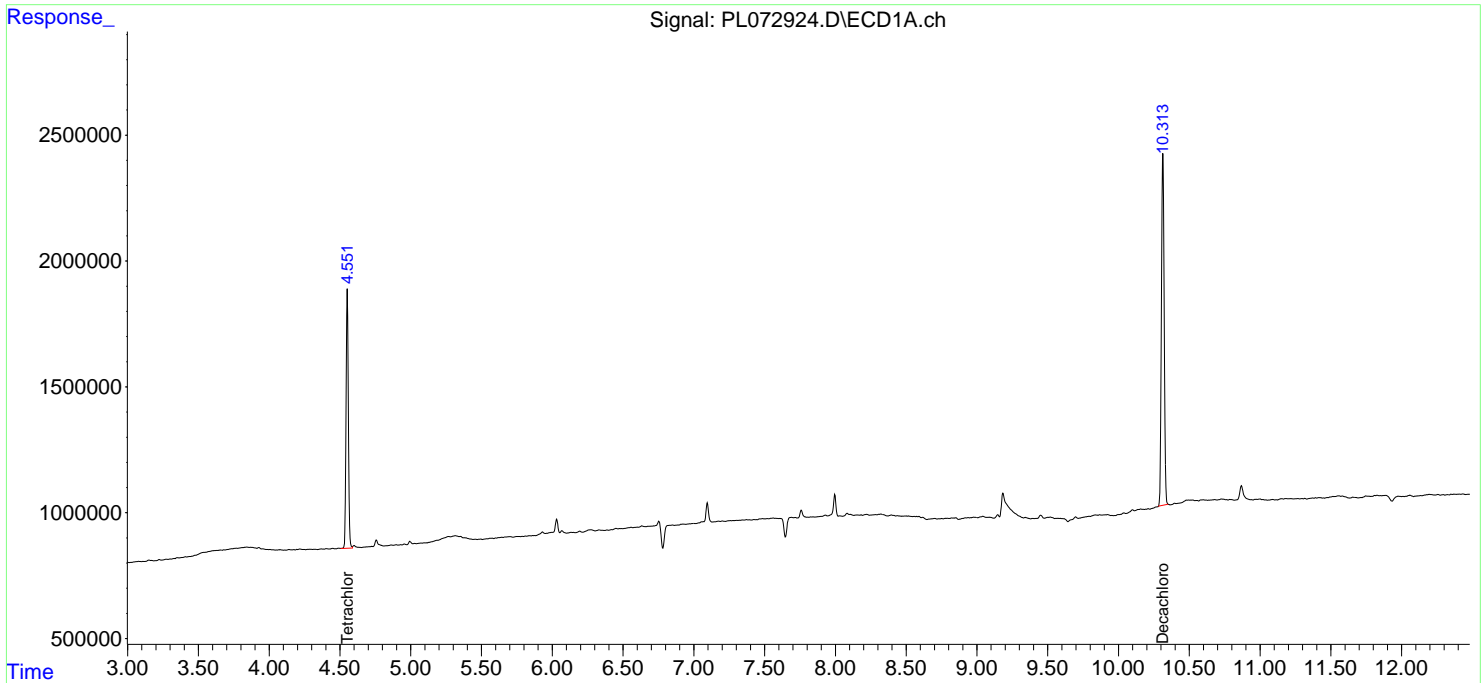
 (f)=RT Delta > 1/2 Window (#)=Amounts differ by > 25% (m)=manual int.

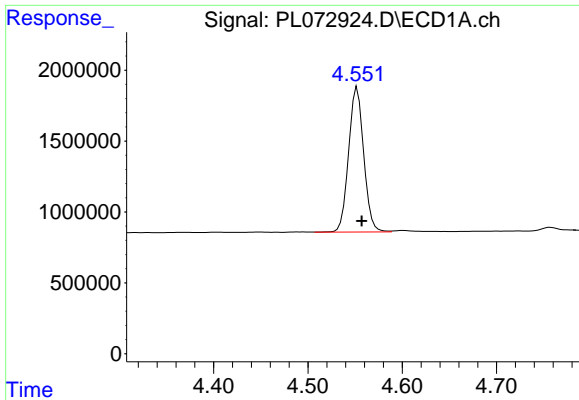
Data Path : Z:\pestpcbsrv\HPCHEM1\ECD_L\Data\PL022322\
 Data File : PL072924.D
 Signal(s) : Signal #1: ECD1A.ch Signal #2: ECD2B.ch
 Acq On : 23 Feb 2022 08:49
 Operator : AR\AJ
 Sample : I.BLK
 Misc :
 ALS Vial : 2 Sample Multiplier: 1

Instrument :
 ECD_L
 ClientSampleId :
 I.BLK

Integration File signal 1: autoint1.e
 Integration File signal 2: autoint2.e
 Quant Time: Feb 24 00:11:01 2022
 Quant Method : Z:\pestpcbsrv\HPCHEM1\ECD_L\methods\PL020722.M
 Quant Title : GC Extractables
 QLast Update : Tue Feb 08 05:14:10 2022
 Response via : Initial Calibration
 Integrator: ChemStation

Volume Inj. : 1 µl
 Signal #1 Phase : ZB-MR2 Signal #2 Phase: ZB-MR1
 Signal #1 Info : 30M x 0.32mm x0.2 Signal #2 Info : 30M x 0.32mm x0.5µm

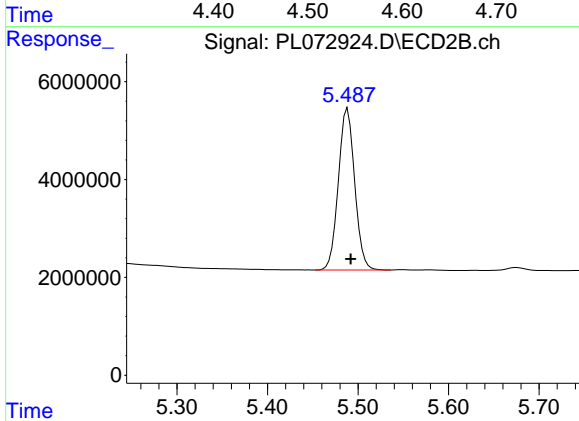




#1 Tetrachloro-m-xylene

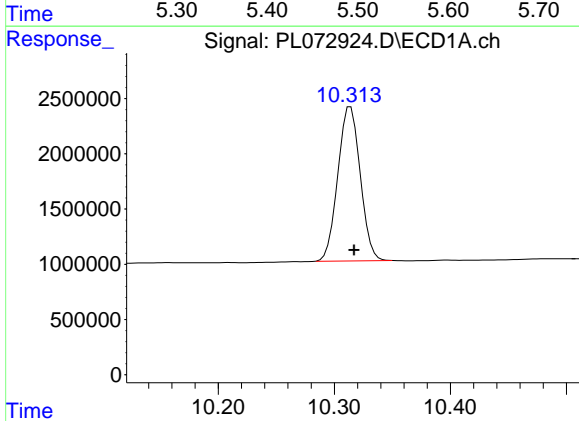
R.T.: 4.552 min
 Delta R.T.: -0.005 min
 Response: 11361336
 Conc: 23.60 ng/ml

Instrument :
 ECD_L
 ClientSampleId :
 I.BLK



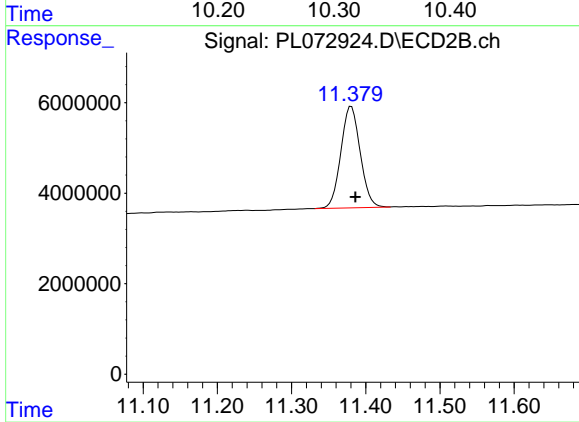
#1 Tetrachloro-m-xylene

R.T.: 5.488 min
 Delta R.T.: -0.004 min
 Response: 41394318
 Conc: 23.96 ng/ml



#28 Decachlorobiphenyl

R.T.: 10.314 min
 Delta R.T.: -0.003 min
 Response: 18765669
 Conc: 24.79 ng/ml



#28 Decachlorobiphenyl

R.T.: 11.381 min
 Delta R.T.: -0.005 min
 Response: 40667812
 Conc: 25.65 ng/ml