

Data Path : Z:\pestpcbsrv\HPCHEM1\ECD\_L\Data\PL022423\  
 Data File : PL081116.D  
 Signal(s) : Signal #1: ECD1A.ch Signal #2: ECD2B.ch  
 Acq On : 24 Feb 2023 10:52  
 Operator : AR\AJ  
 Sample : HEXANE  
 Misc :  
 ALS Vial : 1 Sample Multiplier: 1

Instrument :  
 ECD\_L  
 ClientSampleId :

Integration File signal 1: autoint1.e  
 Integration File signal 2: autoint2.e  
 Quant Time: Feb 25 00:15:22 2023  
 Quant Method : Z:\pestpcbsrv\HPCHEM1\ECD\_L\methods\PL022023.M  
 Quant Title : GC Extractables  
 QLast Update : Mon Feb 20 18:06:39 2023  
 Response via : Initial Calibration  
 Integrator: ChemStation

Volume Inj. : 1 µl  
 Signal #1 Phase : ZB-MR2 Signal #2 Phase: ZB-MR1  
 Signal #1 Info : 30M x 0.32mm x0.2 Signal #2 Info : 30M x 0.32mm x0.5µm

	Compound	RT#1	RT#2	Resp#1	Resp#2	ng/ml	ng/ml
-----							
System Monitoring Compounds							
1)	SA Tetrachlo...	3.359	0.000	62997	0	0.027	N.D. #
2)	SA Decachlor...	0.000	7.838	0	168513	N.D.	0.072 #
Target Compounds							
3)	MA gamma-BHC...	4.146f	0.000	421598	0	0.128	N.D. #
4)	MA Heptachlor	4.708	3.842f	243220	-132086	0.074	N.D. #
5)	MB Aldrin	5.062	4.146	491512	2118210	0.163	0.689 #
6)	B beta-BHC	4.335	3.842f	352429	-132086	0.236	N.D. #
7)	B delta-BHC	4.583	4.051	230429	2758696	0.072	0.913 #
8)	B Heptachlo...	5.483	4.667f	4603934	-55317	1.653	N.D. #
9)	A Endosulfan I	5.860	5.007	2729888	1138835	1.052	0.427 #
10)	B gamma-Chl...	5.717	4.900	3096055	625232	1.108	0.215 #
11)	B alpha-Chl...	5.801	4.967	629807	4320339	0.227	1.480 #
12)	B 4,4'-DDE	6.000	5.147	944161	2068674	0.381	0.867 #
13)	MA Dieldrin	6.137	5.281	173178	8559060	0.065	3.107 #
14)	MA Endrin	6.381f	5.565f	1897958	2108243	0.802	0.853
15)	B Endosulfa...	6.588	5.857	2003150	999377	0.902	0.442 #
16)	A 4,4'-DDD	6.499	5.696	10711379	127225	5.296	0.067 #
17)	MA 4,4'-DDT	6.840f	5.934f	937443	60591	0.415	0.028 #
18)	B Endrin al...	6.713	6.033	133807	84520	0.074	0.046 #
19)	B Endosulfa...	6.948	6.231f	207595	171713	0.090	0.072
20)	A Methoxychlor	0.000	6.524	0	130939	N.D.	0.109 #
21)	B Endrin ke...	7.429	0.000	120087	0	0.050	N.D. #
23)	Chlordane-1	4.503	0.000	9664	0	0.106	N.D. #
24)	Chlordane-2	5.021	0.000	310586	0	3.054	N.D. #
25)	Chlordane-3	5.717	4.900	3096055	625232	8.146	2.379 #
26)	Chlordane-4	5.822	4.967	892418	4320339	1.926	16.102 #
27)	Chlordane-5	0.000	5.639f	0	603570	N.D.	7.838 #

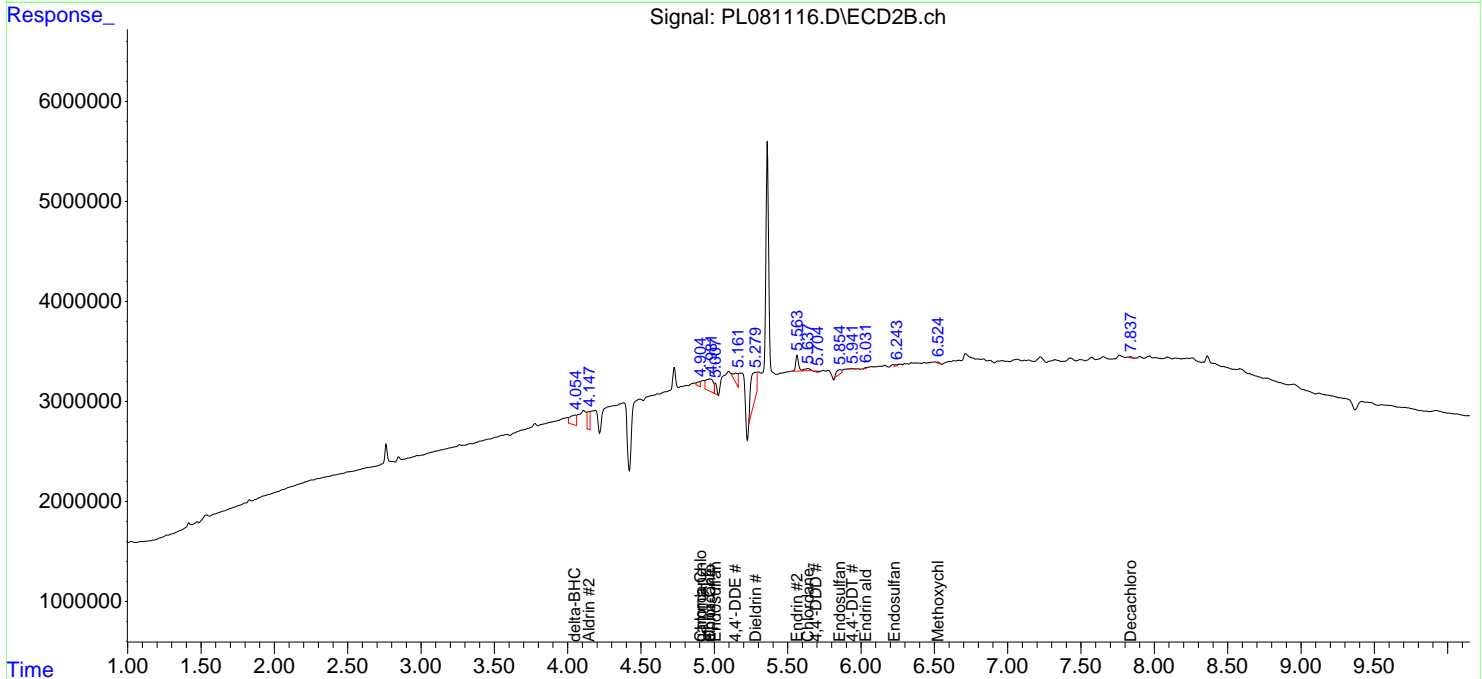
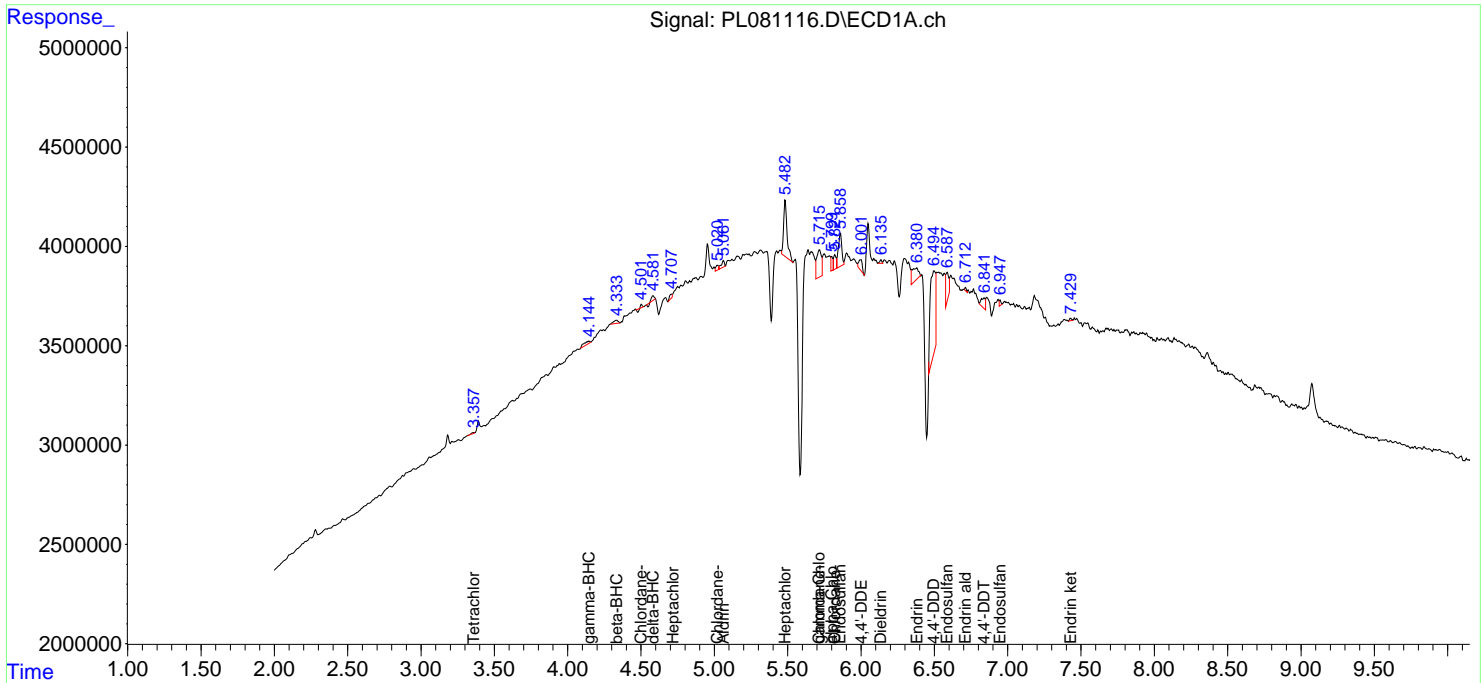
(f)=RT Delta > 1/2 Window (#)=Amounts differ by > 25% (m)=manual int.

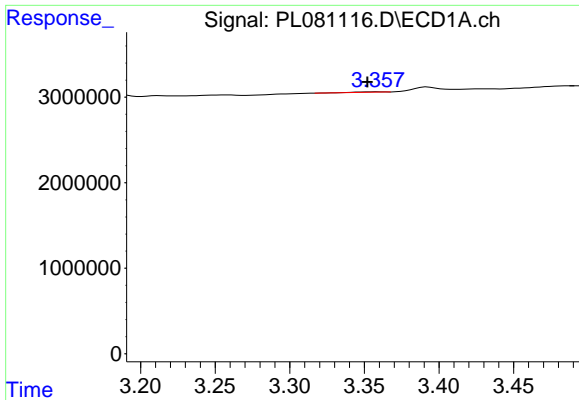
Data Path : Z:\pestpcbsrv\HPCHEM1\ECD\_L\Data\PL022423\  
 Data File : PL081116.D  
 Signal(s) : Signal #1: ECD1A.ch Signal #2: ECD2B.ch  
 Acq On : 24 Feb 2023 10:52  
 Operator : AR\AJ  
 Sample : HEXANE  
 Misc :  
 ALS Vial : 1 Sample Multiplier: 1

Instrument :  
 ECD\_L  
 ClientSampleId :

Integration File signal 1: autoint1.e  
 Integration File signal 2: autoint2.e  
 Quant Time: Feb 25 00:15:22 2023  
 Quant Method : Z:\pestpcbsrv\HPCHEM1\ECD\_L\methods\PL022023.M  
 Quant Title : GC Extractables  
 QLast Update : Mon Feb 20 18:06:39 2023  
 Response via : Initial Calibration  
 Integrator: ChemStation

Volume Inj. : 1 µl  
 Signal #1 Phase : ZB-MR2 Signal #2 Phase: ZB-MR1  
 Signal #1 Info : 30M x 0.32mm x0.2 Signal #2 Info : 30M x 0.32mm x0.5µm

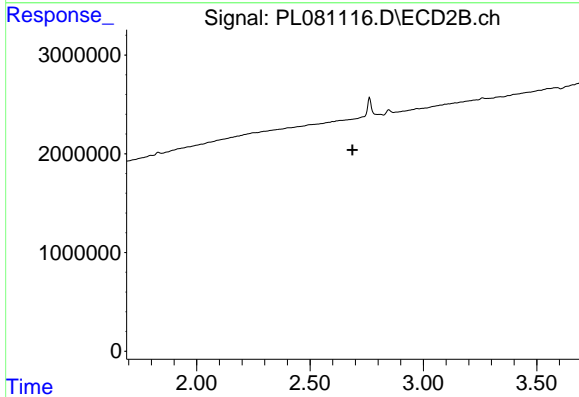




#1 Tetrachloro-m-xylene

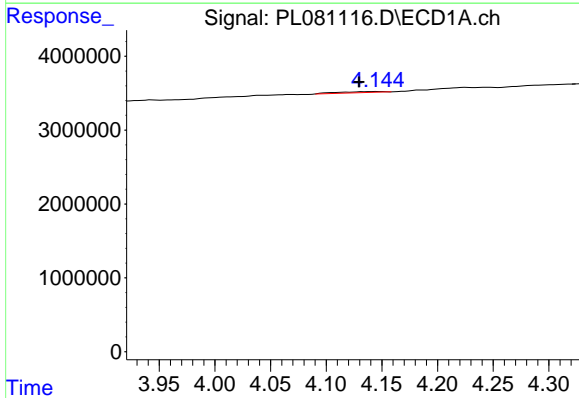
R.T.: 3.359 min  
 Delta R.T.: 0.007 min  
 Response: 62997  
 Conc: 0.03 ng/ml

Instrument :  
 ECD\_L  
 ClientSampleId :



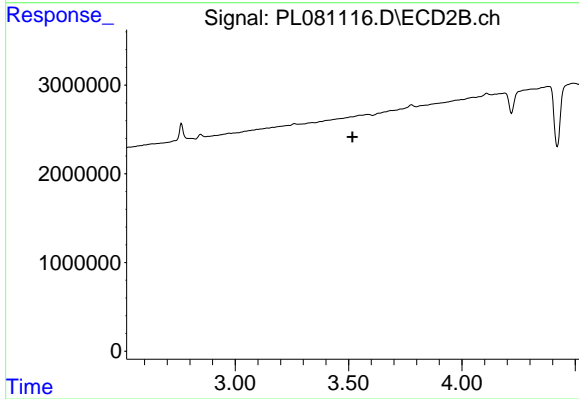
#1 Tetrachloro-m-xylene

R.T.: 0.000 min  
 Exp R.T. : 2.688 min  
 Response: 0  
 Conc: N.D.



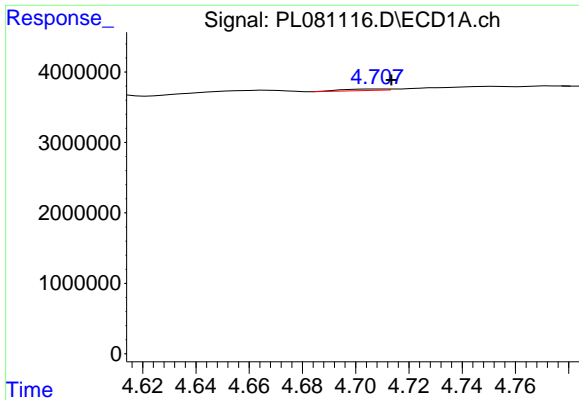
#3 gamma-BHC (Lindane)

R.T.: 4.146 min  
 Delta R.T.: 0.017 min  
 Response: 421598  
 Conc: 0.13 ng/ml



#3 gamma-BHC (Lindane)

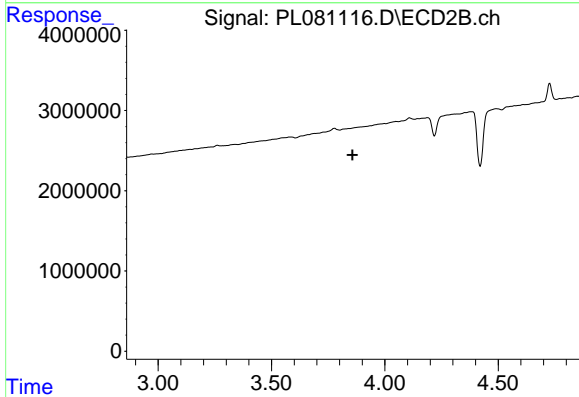
R.T.: 0.000 min  
 Exp R.T. : 3.517 min  
 Response: 0  
 Conc: N.D.



#4 Heptachlor

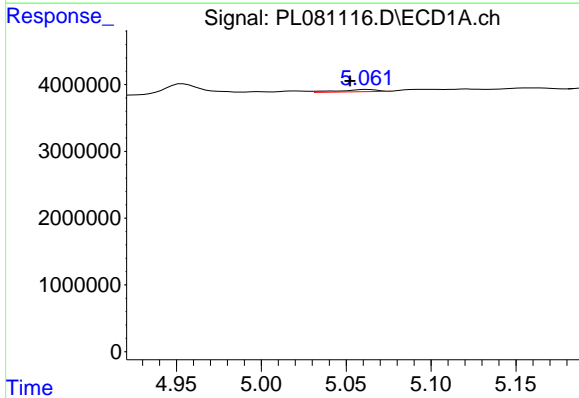
R.T.: 4.708 min  
 Delta R.T.: -0.005 min  
 Response: 243220  
 Conc: 0.07 ng/ml

Instrument :  
 ECD\_L  
 ClientSampleId :



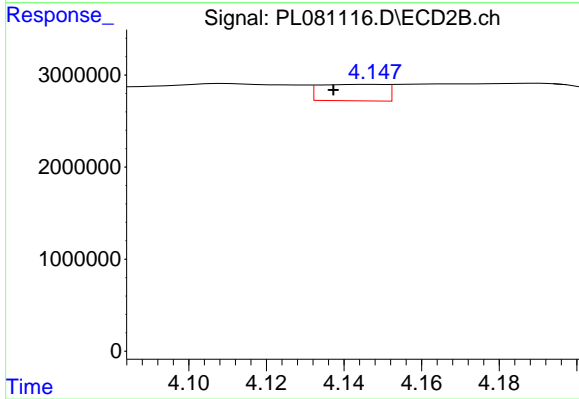
#4 Heptachlor

R.T.: 3.842 min  
 Delta R.T.: -0.016 min  
 Response: -132086  
 Conc: N.D.



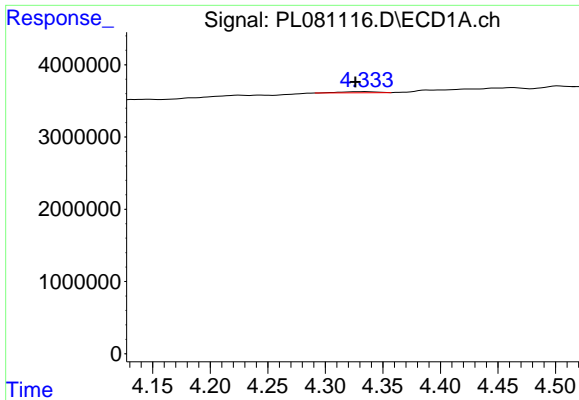
#5 Aldrin

R.T.: 5.062 min  
 Delta R.T.: 0.010 min  
 Response: 491512  
 Conc: 0.16 ng/ml



#5 Aldrin

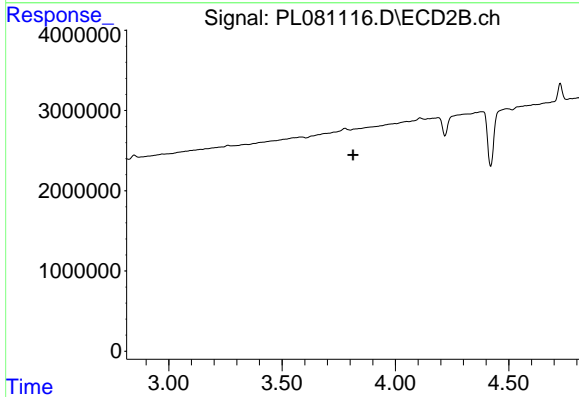
R.T.: 4.146 min  
 Delta R.T.: 0.009 min  
 Response: 2118210  
 Conc: 0.69 ng/ml



#6 beta-BHC

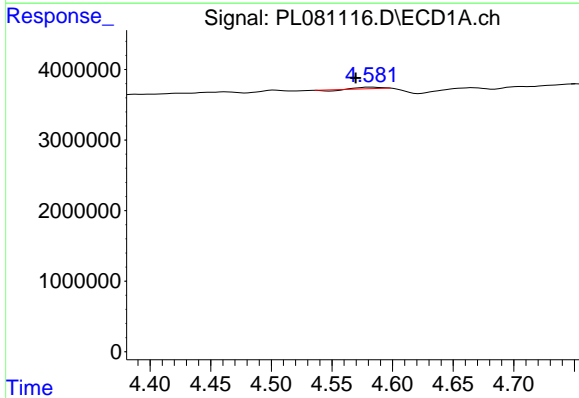
R.T.: 4.335 min  
 Delta R.T.: 0.009 min  
 Response: 352429  
 Conc: 0.24 ng/ml

Instrument :  
 ECD\_L  
 ClientSampleId :



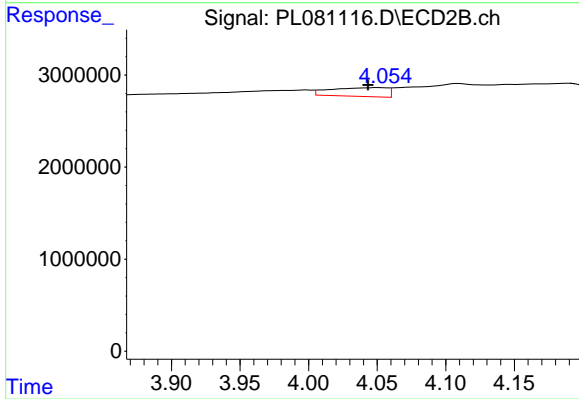
#6 beta-BHC

R.T.: 3.842 min  
 Delta R.T.: 0.029 min  
 Response: -132086  
 Conc: N.D.



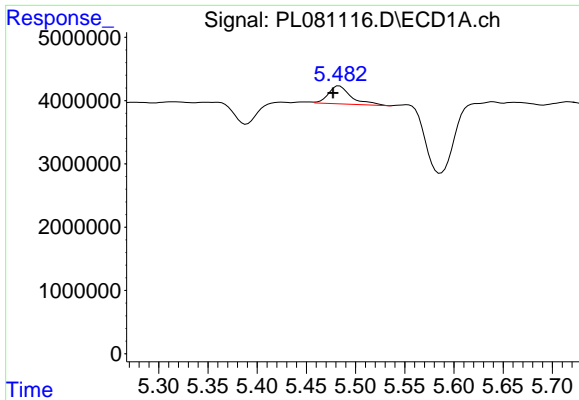
#7 delta-BHC

R.T.: 4.583 min  
 Delta R.T.: 0.013 min  
 Response: 230429  
 Conc: 0.07 ng/ml



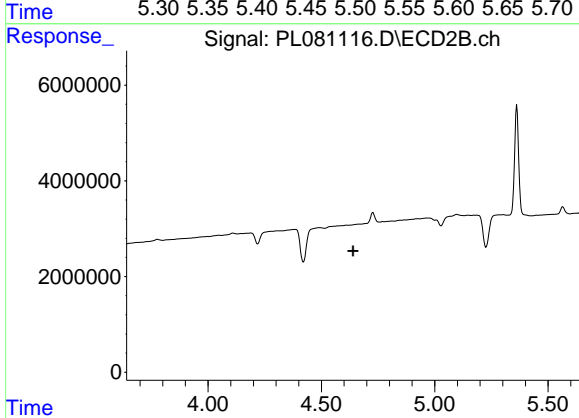
#7 delta-BHC

R.T.: 4.051 min  
 Delta R.T.: 0.007 min  
 Response: 2758696  
 Conc: 0.91 ng/ml

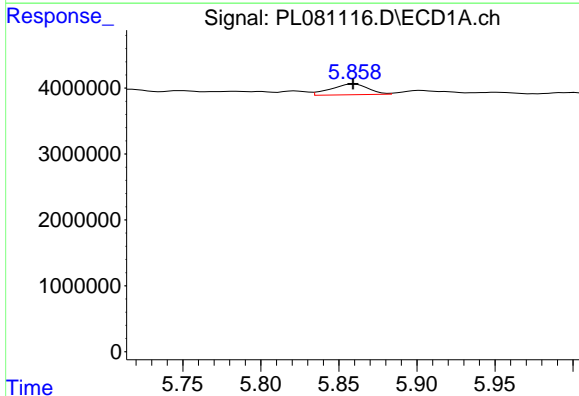


#8 Heptachlor epoxide  
 R.T.: 5.483 min  
 Delta R.T.: 0.006 min  
 Response: 4603934  
 Conc: 1.65 ng/ml

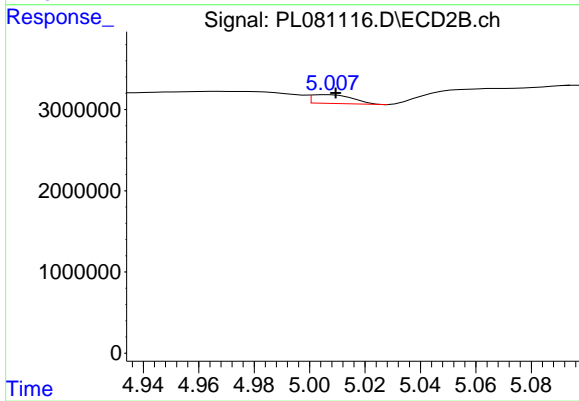
Instrument :  
 ECD\_L  
 ClientSampleId :



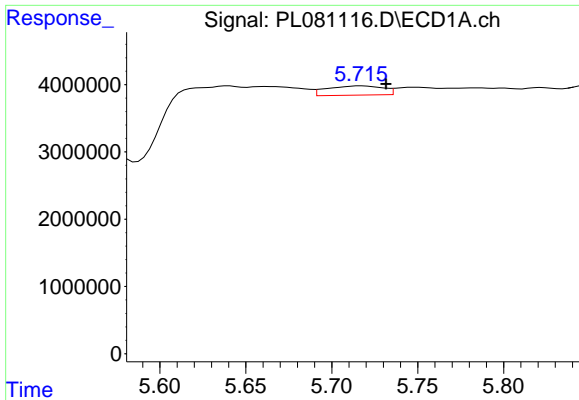
#8 Heptachlor epoxide  
 R.T.: 4.667 min  
 Delta R.T.: 0.027 min  
 Response: -55317  
 Conc: N.D.



#9 Endosulfan I  
 R.T.: 5.860 min  
 Delta R.T.: 0.000 min  
 Response: 2729888  
 Conc: 1.05 ng/ml



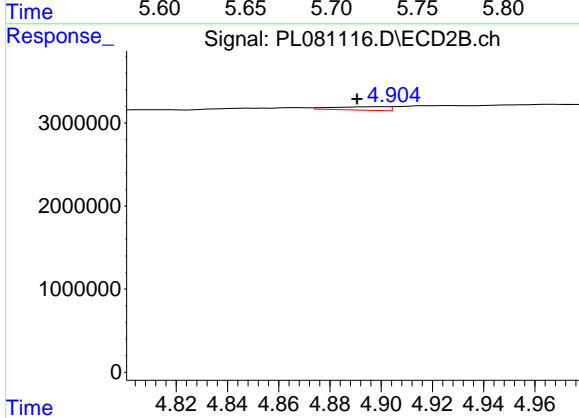
#9 Endosulfan I  
 R.T.: 5.007 min  
 Delta R.T.: -0.002 min  
 Response: 1138835  
 Conc: 0.43 ng/ml



#10 gamma-Chlordane

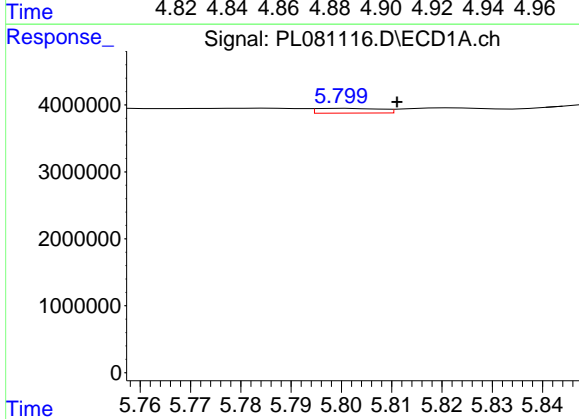
R.T.: 5.717 min  
 Delta R.T.: -0.015 min  
 Response: 3096055  
 Conc: 1.11 ng/ml

Instrument :  
 ECD\_L  
 ClientSampleId :



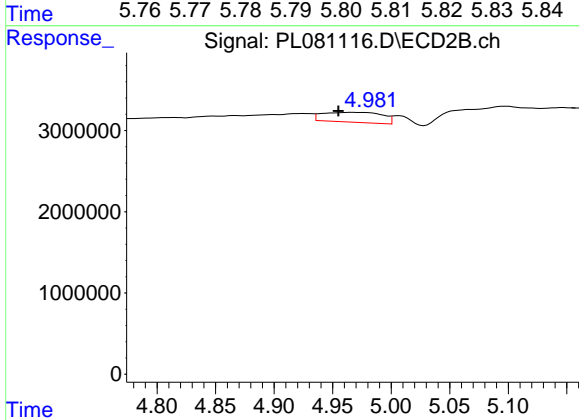
#10 gamma-Chlordane

R.T.: 4.900 min  
 Delta R.T.: 0.010 min  
 Response: 625232  
 Conc: 0.21 ng/ml



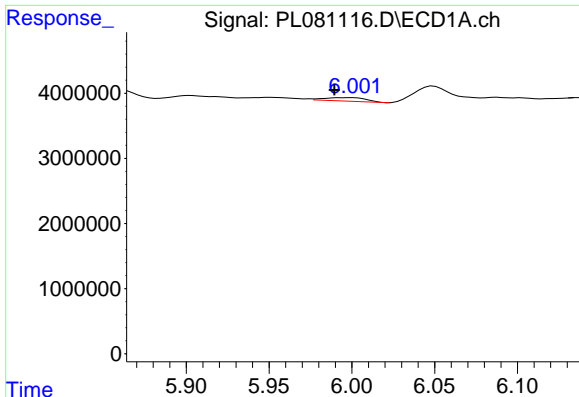
#11 alpha-Chlordane

R.T.: 5.801 min  
 Delta R.T.: -0.010 min  
 Response: 629807  
 Conc: 0.23 ng/ml



#11 alpha-Chlordane

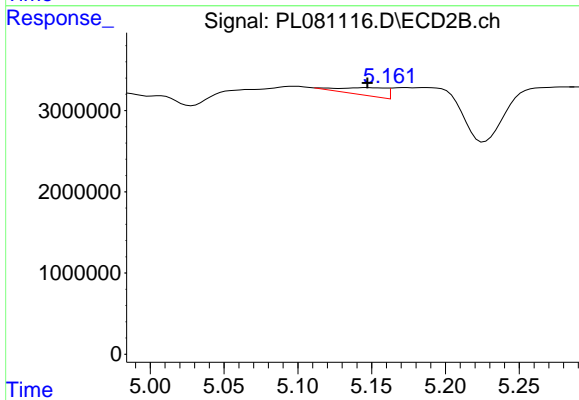
R.T.: 4.967 min  
 Delta R.T.: 0.012 min  
 Response: 4320339  
 Conc: 1.48 ng/ml



#12 4,4'-DDE

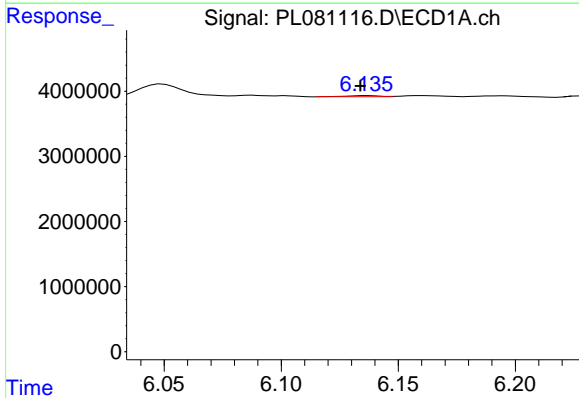
R.T.: 6.000 min  
 Delta R.T.: 0.011 min  
 Response: 944161  
 Conc: 0.38 ng/ml

Instrument :  
 ECD\_L  
 ClientSampleId :



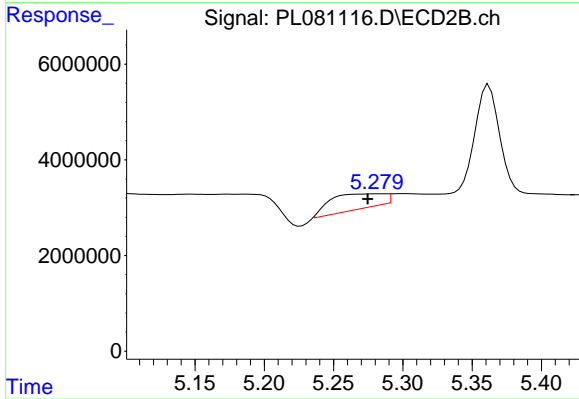
#12 4,4'-DDE

R.T.: 5.147 min  
 Delta R.T.: 0.000 min  
 Response: 2068674  
 Conc: 0.87 ng/ml



#13 Dieldrin

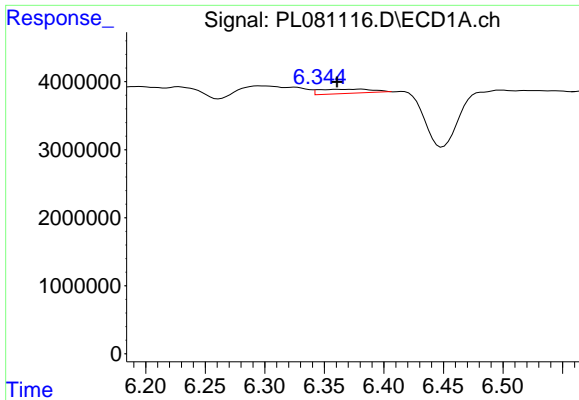
R.T.: 6.137 min  
 Delta R.T.: 0.003 min  
 Response: 173178  
 Conc: 0.07 ng/ml



#13 Dieldrin

R.T.: 5.281 min  
 Delta R.T.: 0.007 min  
 Response: 8559060  
 Conc: 3.11 ng/ml

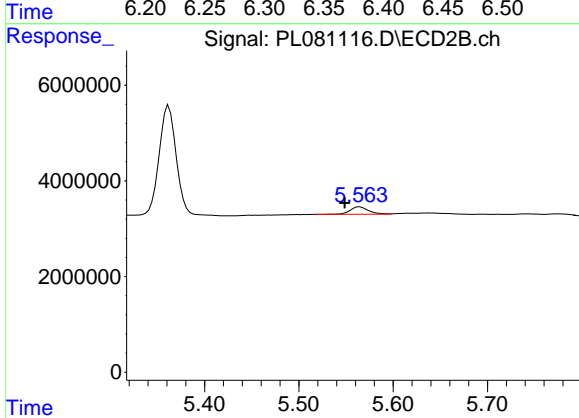




#14 Endrin

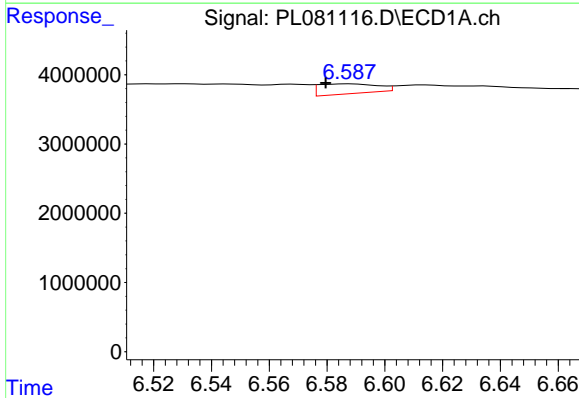
R.T.: 6.381 min  
 Delta R.T.: 0.020 min  
 Response: 1897958  
 Conc: 0.80 ng/ml

Instrument :  
 ECD\_L  
 ClientSampleId :



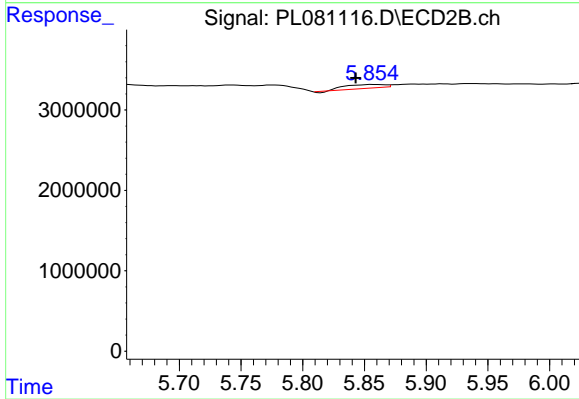
#14 Endrin

R.T.: 5.565 min  
 Delta R.T.: 0.016 min  
 Response: 2108243  
 Conc: 0.85 ng/ml



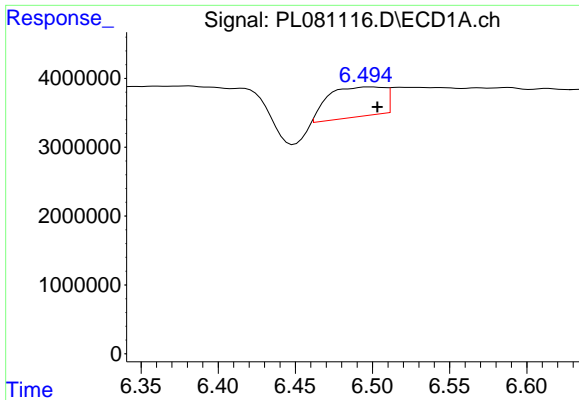
#15 Endosulfan II

R.T.: 6.588 min  
 Delta R.T.: 0.009 min  
 Response: 2003150  
 Conc: 0.90 ng/ml



#15 Endosulfan II

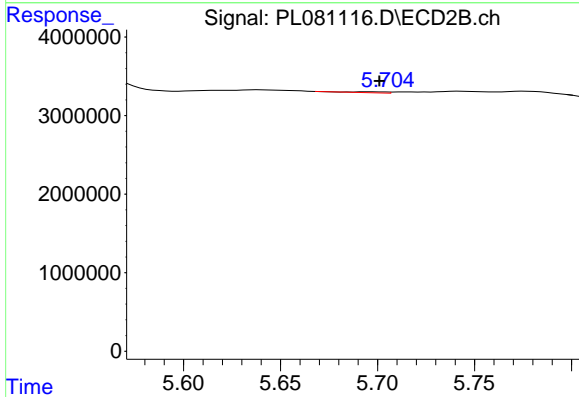
R.T.: 5.857 min  
 Delta R.T.: 0.015 min  
 Response: 999377  
 Conc: 0.44 ng/ml



#16 4,4'-DDD

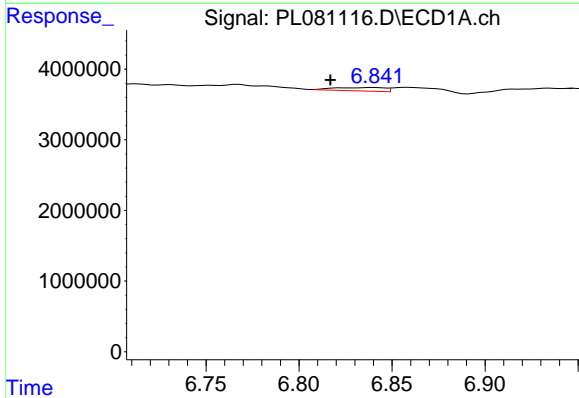
R.T.: 6.499 min  
 Delta R.T.: -0.004 min  
 Response: 10711379  
 Conc: 5.30 ng/ml

Instrument :  
 ECD\_L  
 ClientSampleId :



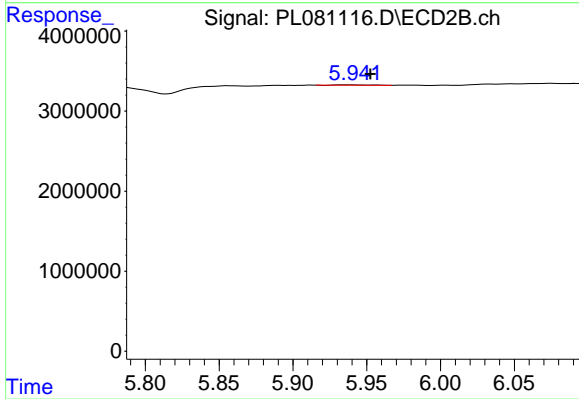
#16 4,4'-DDD

R.T.: 5.696 min  
 Delta R.T.: -0.005 min  
 Response: 127225  
 Conc: 0.07 ng/ml



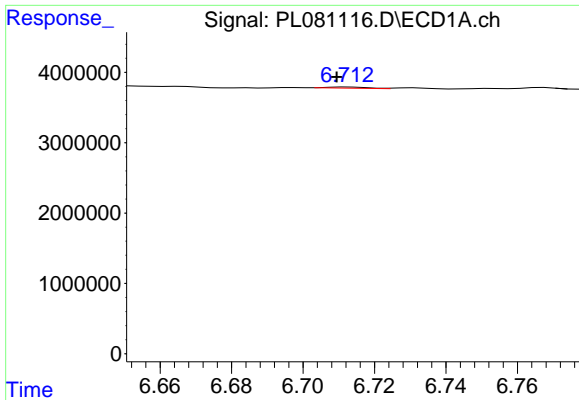
#17 4,4'-DDT

R.T.: 6.840 min  
 Delta R.T.: 0.024 min  
 Response: 937443  
 Conc: 0.41 ng/ml



#17 4,4'-DDT

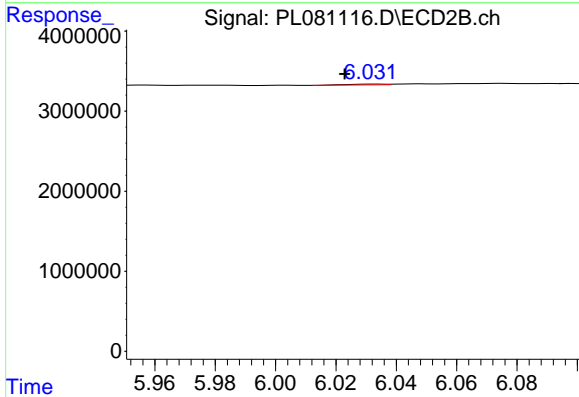
R.T.: 5.934 min  
 Delta R.T.: -0.018 min  
 Response: 60591  
 Conc: 0.03 ng/ml



#18 Endrin aldehyde

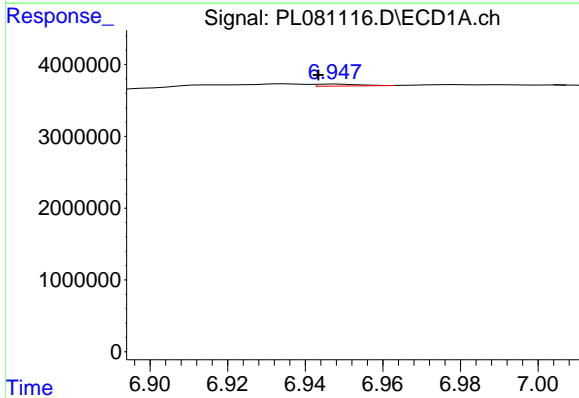
R.T.: 6.713 min  
 Delta R.T.: 0.003 min  
 Response: 133807  
 Conc: 0.07 ng/ml

Instrument :  
 ECD\_L  
 ClientSampleId :



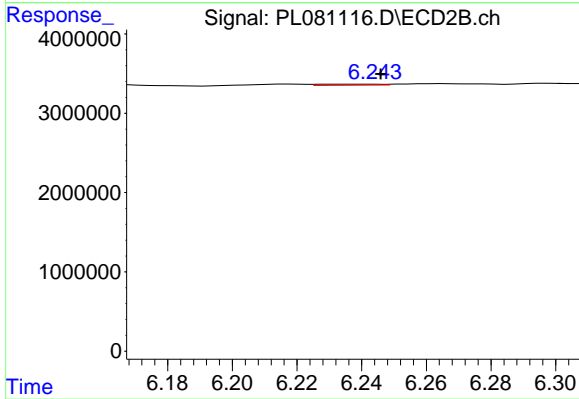
#18 Endrin aldehyde

R.T.: 6.033 min  
 Delta R.T.: 0.010 min  
 Response: 84520  
 Conc: 0.05 ng/ml



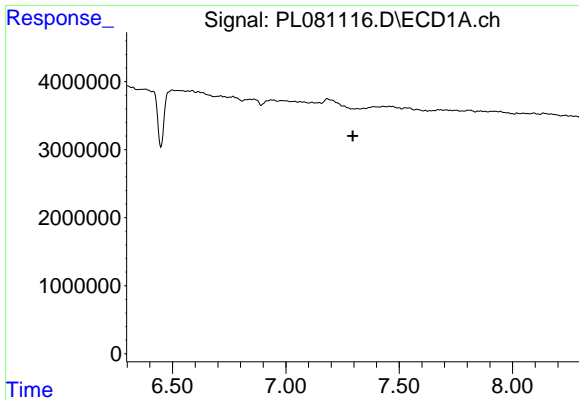
#19 Endosulfan Sulfate

R.T.: 6.948 min  
 Delta R.T.: 0.005 min  
 Response: 207595  
 Conc: 0.09 ng/ml



#19 Endosulfan Sulfate

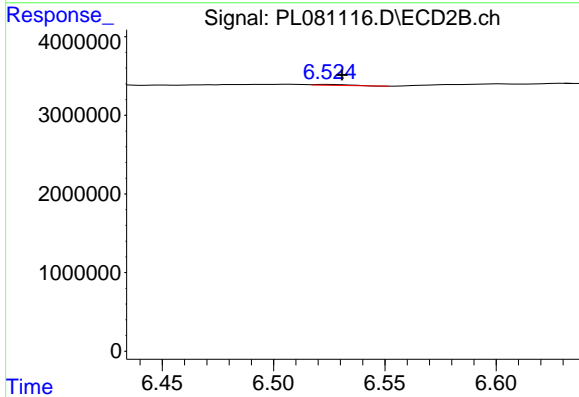
R.T.: 6.231 min  
 Delta R.T.: -0.015 min  
 Response: 171713  
 Conc: 0.07 ng/ml



#20 Methoxychlor

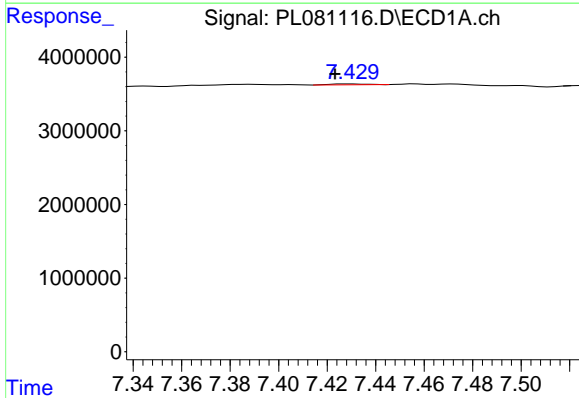
R.T.: 0.000 min  
 Exp R.T.: 7.295 min  
 Response: 0  
 Conc: N.D.

Instrument :  
 ECD\_L  
 ClientSampleId :



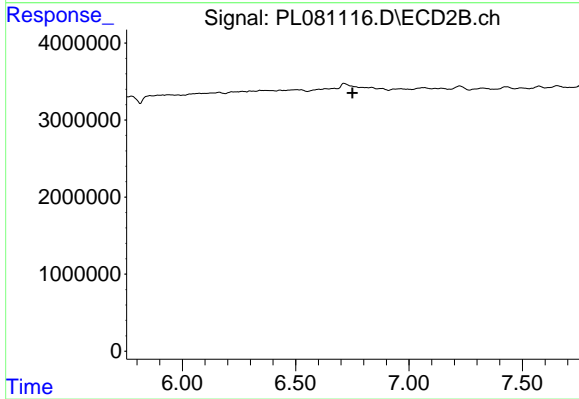
#20 Methoxychlor

R.T.: 6.524 min  
 Delta R.T.: -0.006 min  
 Response: 130939  
 Conc: 0.11 ng/ml



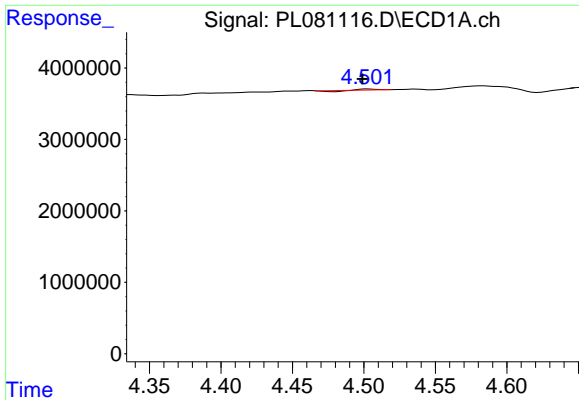
#21 Endrin ketone

R.T.: 7.429 min  
 Delta R.T.: 0.006 min  
 Response: 120087  
 Conc: 0.05 ng/ml



#21 Endrin ketone

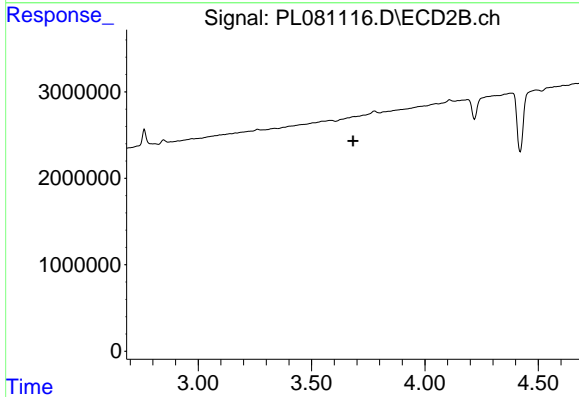
R.T.: 0.000 min  
 Exp R.T.: 6.751 min  
 Response: 0  
 Conc: N.D.



#23 Chlordane-1

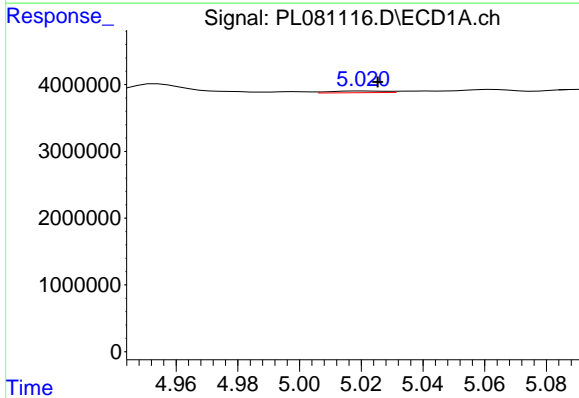
R.T.: 4.503 min  
 Delta R.T.: 0.004 min  
 Response: 9664  
 Conc: 0.11 ng/ml

Instrument :  
 ECD\_L  
 ClientSampleId :



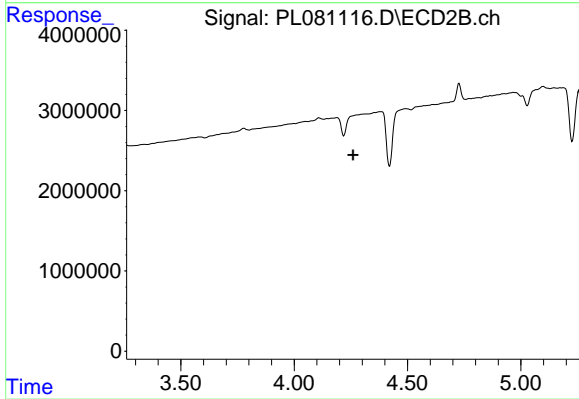
#23 Chlordane-1

R.T.: 0.000 min  
 Exp R.T. : 3.683 min  
 Response: 0  
 Conc: N.D.



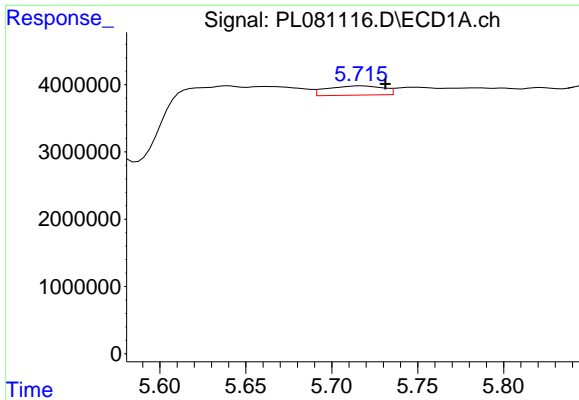
#24 Chlordane-2

R.T.: 5.021 min  
 Delta R.T.: -0.004 min  
 Response: 310586  
 Conc: 3.05 ng/ml



#24 Chlordane-2

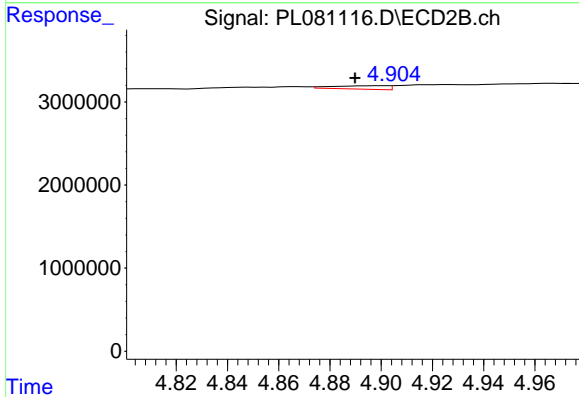
R.T.: 0.000 min  
 Exp R.T. : 4.260 min  
 Response: 0  
 Conc: N.D.



#25 Chlordane-3

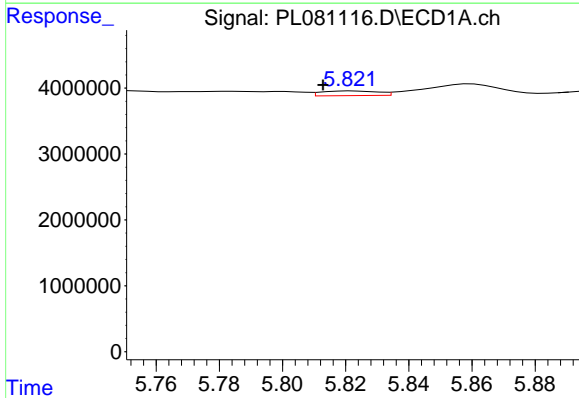
R.T.: 5.717 min  
 Delta R.T.: -0.014 min  
 Response: 3096055  
 Conc: 8.15 ng/ml

Instrument :  
 ECD\_L  
 ClientSampleId :



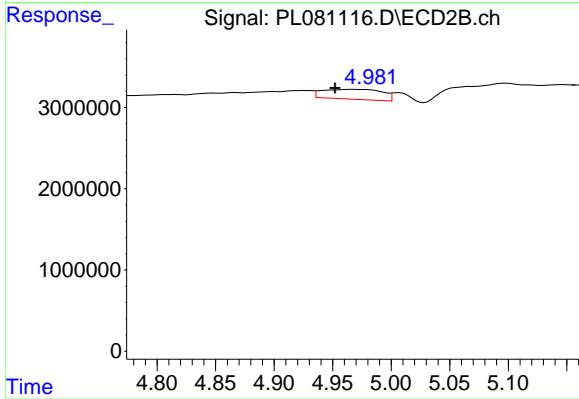
#25 Chlordane-3

R.T.: 4.900 min  
 Delta R.T.: 0.011 min  
 Response: 625232  
 Conc: 2.38 ng/ml



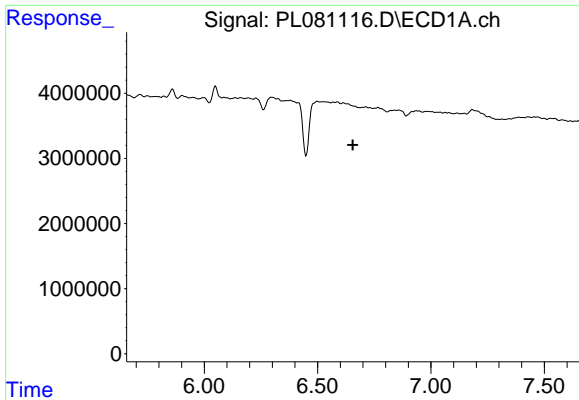
#26 Chlordane-4

R.T.: 5.822 min  
 Delta R.T.: 0.009 min  
 Response: 892418  
 Conc: 1.93 ng/ml



#26 Chlordane-4

R.T.: 4.967 min  
 Delta R.T.: 0.015 min  
 Response: 4320339  
 Conc: 16.10 ng/ml

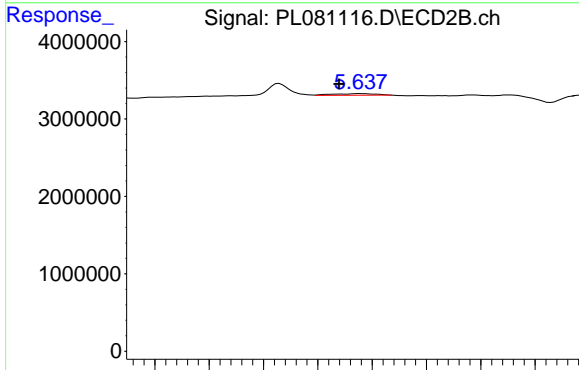


#27 Chlordane-5

R.T.: 0.000 min  
 Exp R.T.: 6.655 min  
 Response: 0  
 Conc: N.D.

Instrument :  
 ECD\_L  
 ClientSampleId :

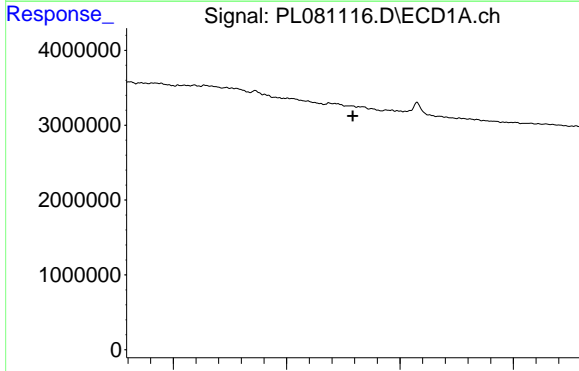
Time



#27 Chlordane-5

R.T.: 5.639 min  
 Delta R.T.: 0.019 min  
 Response: 603570  
 Conc: 7.84 ng/ml

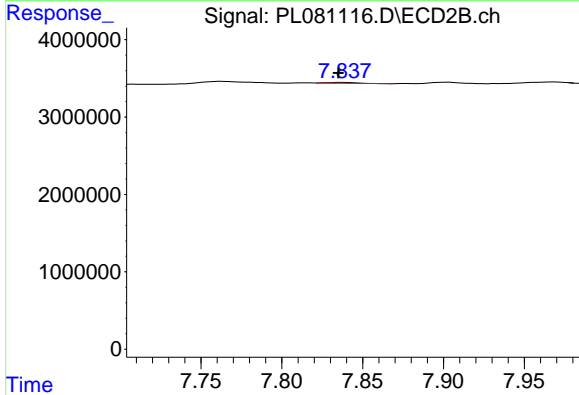
Time



#28 Decachlorobiphenyl

R.T.: 0.000 min  
 Exp R.T.: 8.792 min  
 Response: 0  
 Conc: N.D.

Time



#28 Decachlorobiphenyl

R.T.: 7.838 min  
 Delta R.T.: 0.003 min  
 Response: 168513  
 Conc: 0.07 ng/ml

Time