

Data Path : Z:\pestpcbsrv\HPCHEM1\ECD_L\Data\PL022519\
 Data File : PL045058.D
 Signal(s) : Signal #1: ECD1A.ch Signal #2: ECD2B.ch
 Acq On : 25 Feb 2019 15:14
 Operator : AJ\SJ
 Sample : K1348-05
 Misc :
 ALS Vial : 8 Sample Multiplier: 1

Instrument :
 ECD_L
 ClientSampleId :
 OK-03-022219-B

Integration File signal 1: autoint1.e
 Integration File signal 2: autoint2.e
 Quant Time: Feb 25 23:50:51 2019
 Quant Method : Z:\pestpcbsrv\HPCHEM1\ECD_L\methods\PL020619.M
 Quant Title : GC Extractables
 QLast Update : Thu Feb 07 01:39:50 2019
 Response via : Initial Calibration
 Integrator: ChemStation

Volume Inj. : 2 µl
 Signal #1 Phase : ZB-MR1 Signal #2 Phase: ZB-MR2
 Signal #1 Info : 30M x 0.32mm x0.5 Signal #2 Info : 30M x 0.32mm x0.25µm

Compound	RT#1	RT#2	Resp#1	Resp#2	ng/ml	ng/ml

System Monitoring Compounds						
1) SA Tetrachlo...	3.365	3.984	64854302	21669733	9.114	9.224
28) SA Decachlor...	8.052	9.044	66846679	20703774	9.165	9.348
Target Compounds						
5) MB Aldrin	0.000	5.442f	0	1117146	N.D.	0.403 #
10) B gamma-Chl...	5.284f	6.092	18583849	2407758	1.926	0.867 #
11) B alpha-Chl...	5.319	6.166	12053364	9367637	1.261	3.381 #
12) B 4,4'-DDE	5.487	6.320	6211263	2784147	0.716	1.166 #
17) MA 4,4'-DDT	6.232	0.000	6573552	0	0.917	N.D. #

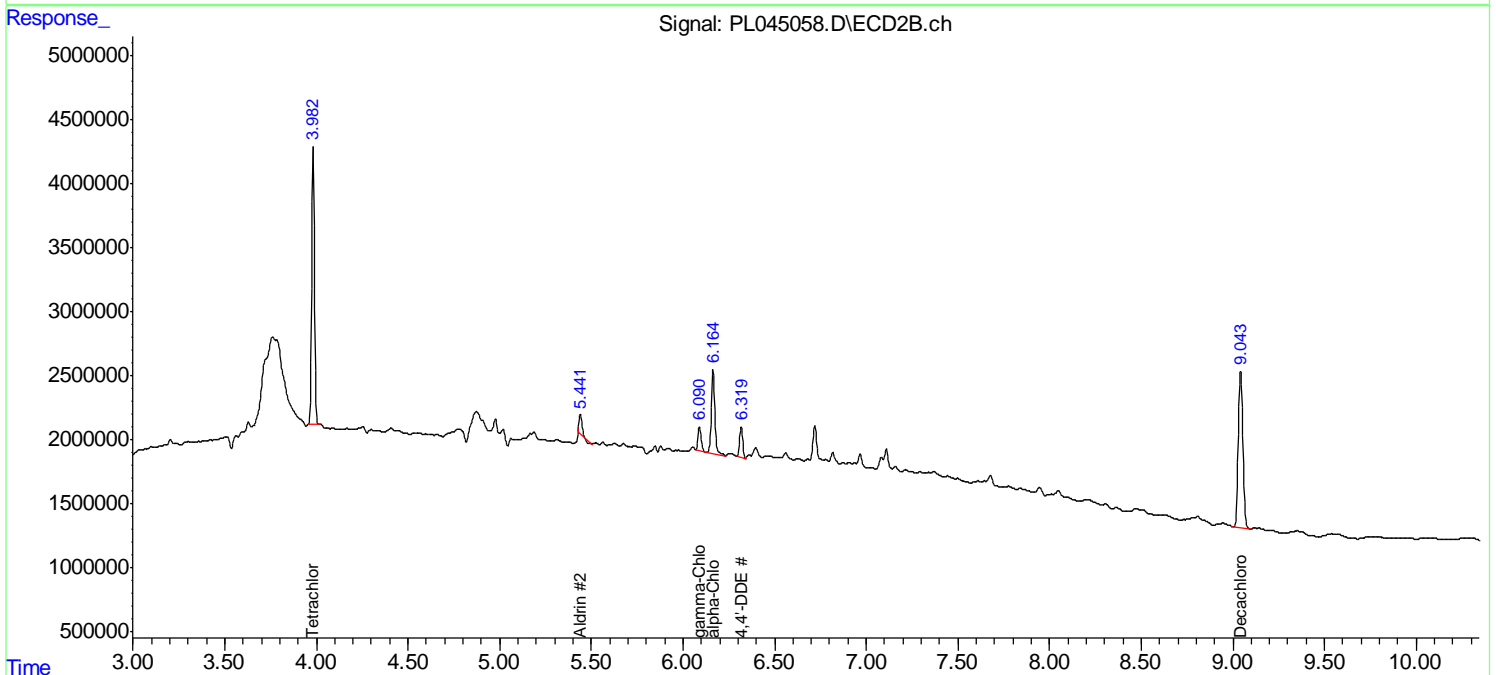
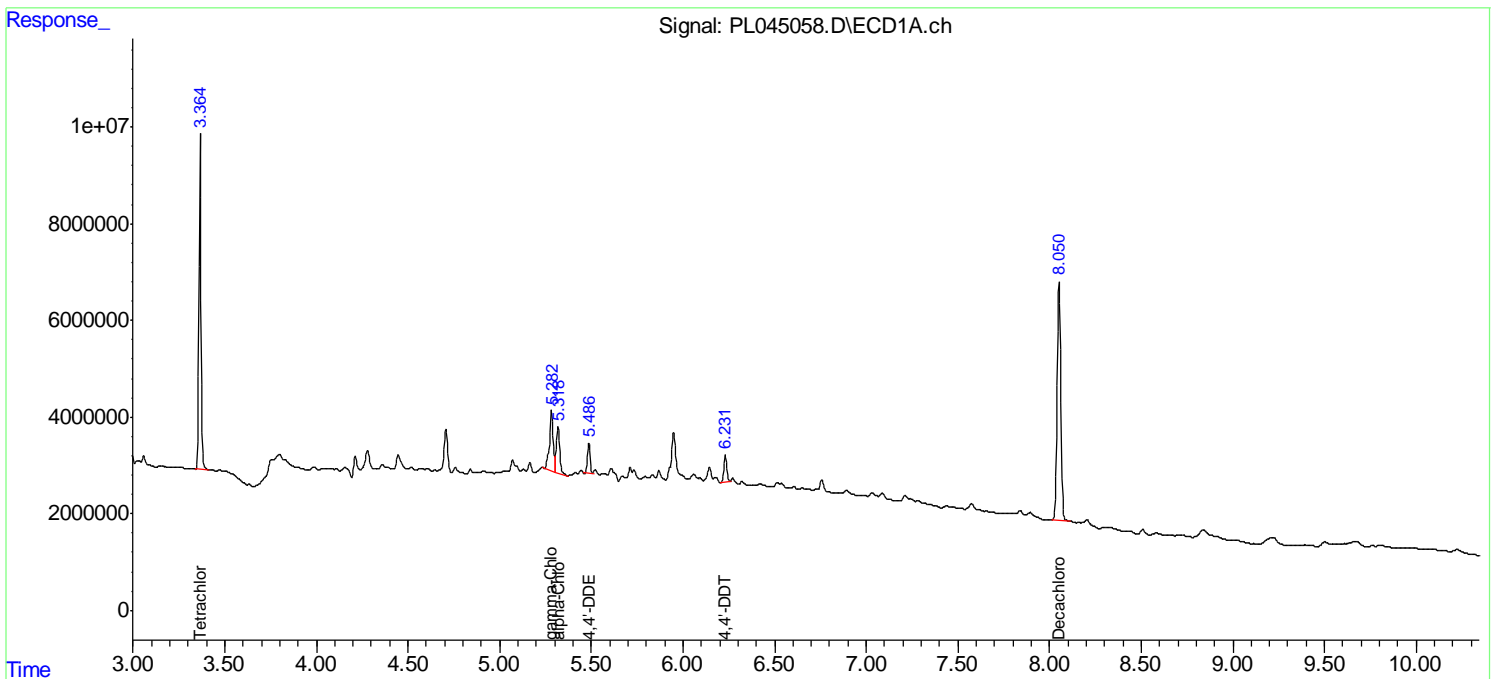
(f)=RT Delta > 1/2 Window (#)=Amounts differ by > 25% (m)=manual int.

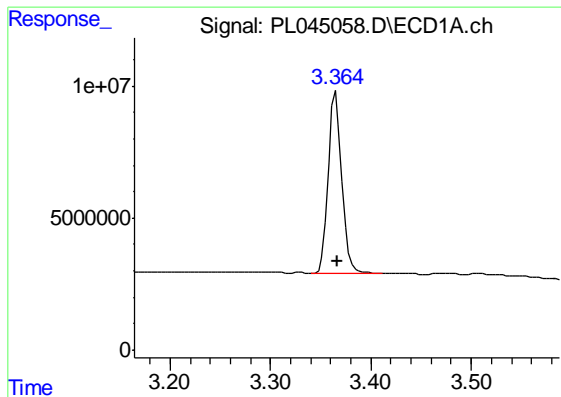
Data Path : Z:\pestpcbsrv\HPCHEM1\ECD_L\Data\PL022519\
 Data File : PL045058.D
 Signal(s) : Signal #1: ECD1A.ch Signal #2: ECD2B.ch
 Acq On : 25 Feb 2019 15:14
 Operator : AJ\SJ
 Sample : K1348-05
 Misc :
 ALS Vial : 8 Sample Multiplier: 1

Instrument :
 ECD_L
 ClientSampled :
 OK-03-022219-B

Integration File signal 1: autoint1.e
 Integration File signal 2: autoint2.e
 Quant Time: Feb 25 23:50:51 2019
 Quant Method : Z:\pestpcbsrv\HPCHEM1\ECD_L\methods\PL020619.M
 Quant Title : GC Extractables
 QLast Update : Thu Feb 07 01:39:50 2019
 Response via : Initial Calibration
 Integrator: ChemStation

Volume Inj. : 2 µl
 Signal #1 Phase : ZB-MR1 Signal #2 Phase: ZB-MR2
 Signal #1 Info : 30M x 0.32mm x0.5 Signal #2 Info : 30M x 0.32mm x0.25µm

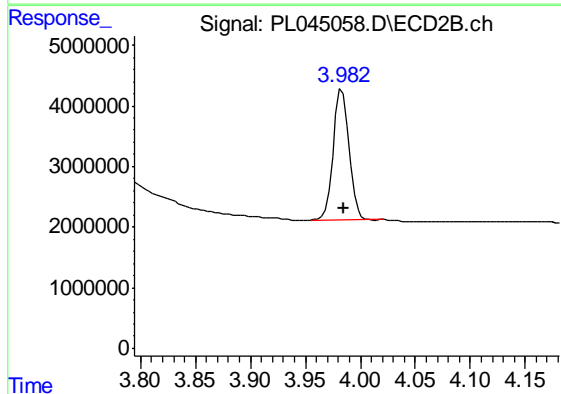




#1 Tetrachloro-m-xylene

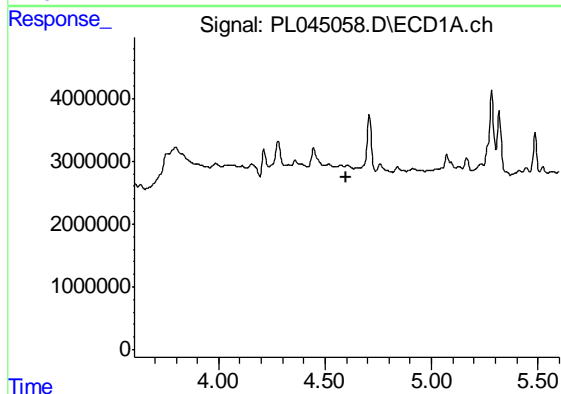
R.T.: 3.365 min
 Delta R.T.: 0.000 min
 Response: 64854302
 Conc: 9.11 ng/ml

Instrument :
 ECD_L
 ClientSampleId :
 OK-03-022219-B



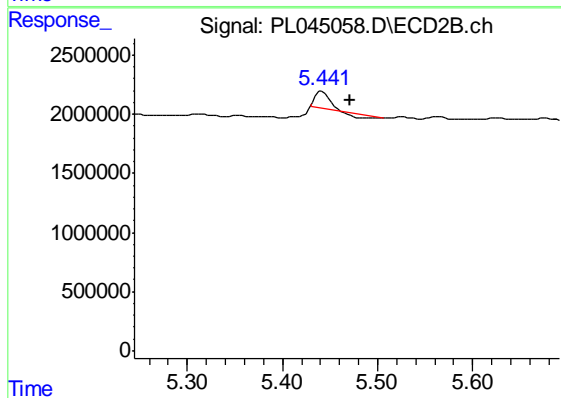
#1 Tetrachloro-m-xylene

R.T.: 3.984 min
 Delta R.T.: -0.001 min
 Response: 21669733
 Conc: 9.22 ng/ml



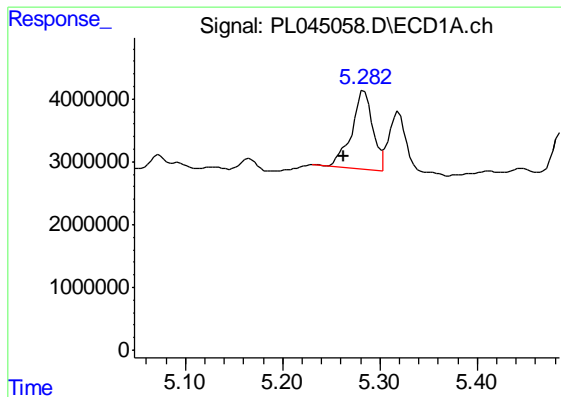
#5 Aldrin

R.T.: 0.000 min
 Exp R.T. : 4.602 min
 Response: 0
 Conc: N.D.



#5 Aldrin

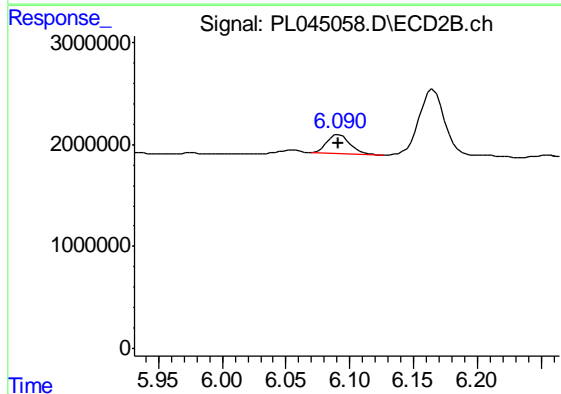
R.T.: 5.442 min
 Delta R.T.: -0.029 min
 Response: 1117146
 Conc: 0.40 ng/ml



#10 gamma-Chlordane

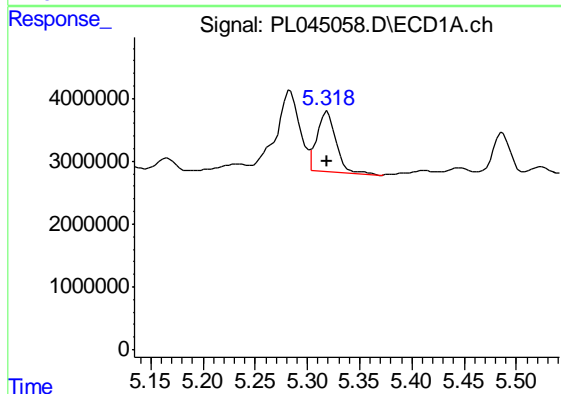
R.T.: 5.284 min
 Delta R.T.: 0.021 min
 Response: 18583849
 Conc: 1.93 ng/ml

Instrument :
 ECD_L
 ClientSampleId :
 OK-03-022219-B



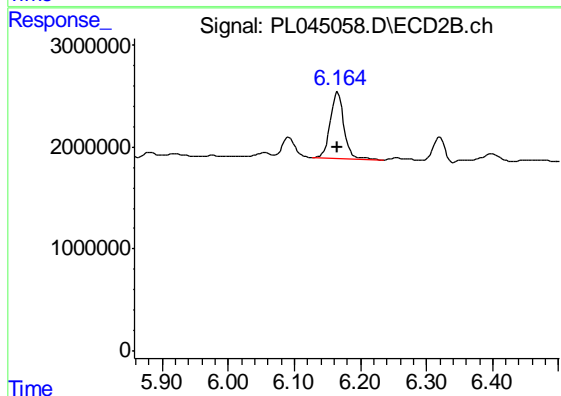
#10 gamma-Chlordane

R.T.: 6.092 min
 Delta R.T.: 0.000 min
 Response: 2407758
 Conc: 0.87 ng/ml



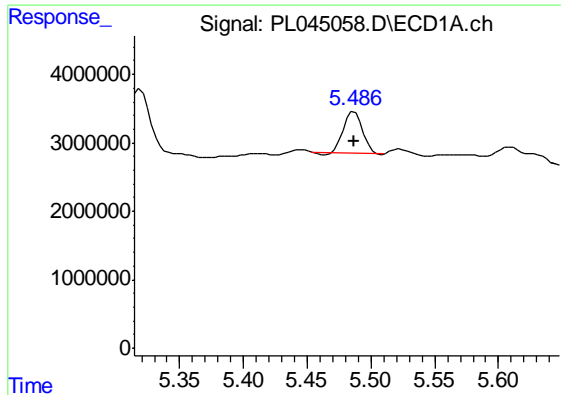
#11 alpha-Chlordane

R.T.: 5.319 min
 Delta R.T.: 0.000 min
 Response: 12053364
 Conc: 1.26 ng/ml



#11 alpha-Chlordane

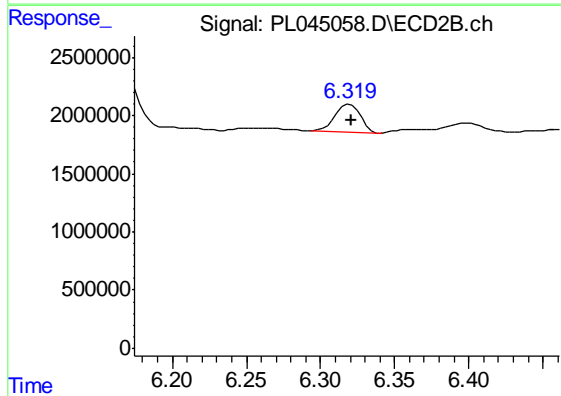
R.T.: 6.166 min
 Delta R.T.: 0.002 min
 Response: 9367637
 Conc: 3.38 ng/ml



#12 4,4'-DDE

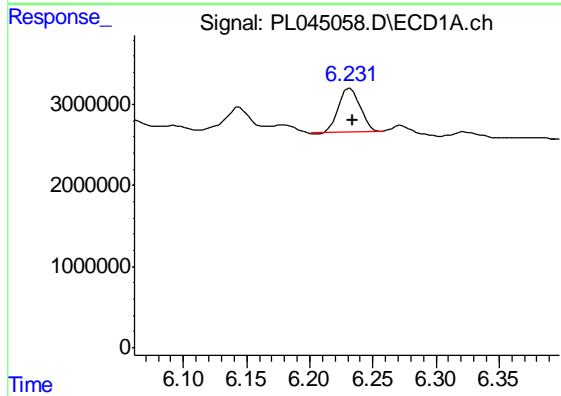
R.T.: 5.487 min
 Delta R.T.: 0.000 min
 Response: 6211263
 Conc: 0.72 ng/ml

Instrument :
 ECD_L
 ClientSampleId :
 OK-03-022219-B



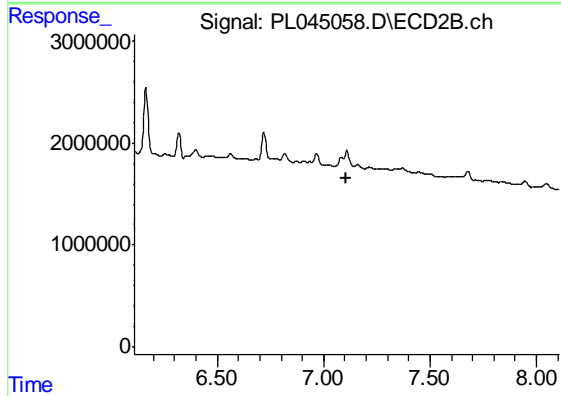
#12 4,4'-DDE

R.T.: 6.320 min
 Delta R.T.: -0.001 min
 Response: 2784147
 Conc: 1.17 ng/ml



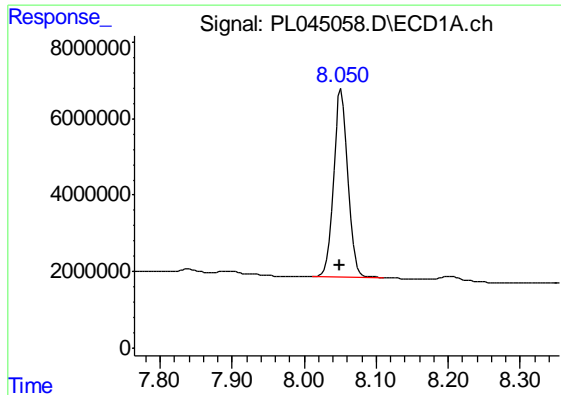
#17 4,4'-DDT

R.T.: 6.232 min
 Delta R.T.: -0.002 min
 Response: 6573552
 Conc: 0.92 ng/ml



#17 4,4'-DDT

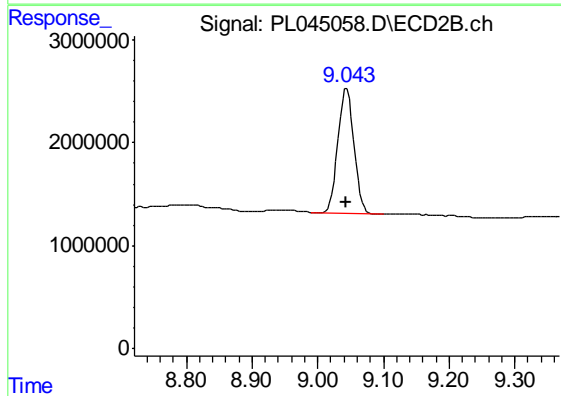
R.T.: 0.000 min
 Exp R.T. : 7.109 min
 Response: 0
 Conc: N.D.



#28 Decachlorobiphenyl

R.T.: 8.052 min
Delta R.T.: 0.003 min
Response: 66846679
Conc: 9.17 ng/ml

Instrument :
ECD_L
ClientSampleId :
OK-03-022219-B



#28 Decachlorobiphenyl

R.T.: 9.044 min
Delta R.T.: 0.001 min
Response: 20703774
Conc: 9.35 ng/ml