

Data Path : Z:\pestpcbsrv\HPCHEM1\ECD_L\Data\PL022519\
 Data File : PL045073.D
 Signal(s) : Signal #1: ECD1A.ch Signal #2: ECD2B.ch
 Acq On : 25 Feb 2019 18:46
 Operator : AJ\SJ
 Sample : K1596-03
 Misc :
 ALS Vial : 21 Sample Multiplier: 1

Instrument :
 ECD_L
 ClientSampleId :
 COMP-15

Integration File signal 1: autoint1.e
 Integration File signal 2: autoint2.e
 Quant Time: Feb 25 23:54:46 2019
 Quant Method : Z:\pestpcbsrv\HPCHEM1\ECD_L\methods\PL020619.M
 Quant Title : GC Extractables
 QLast Update : Thu Feb 07 01:39:50 2019
 Response via : Initial Calibration
 Integrator: ChemStation

Volume Inj. : 2 µl
 Signal #1 Phase : ZB-MR1 Signal #2 Phase: ZB-MR2
 Signal #1 Info : 30M x 0.32mm x0.5 Signal #2 Info : 30M x 0.32mm x0.25µm

Compound	RT#1	RT#2	Resp#1	Resp#2	ng/ml	ng/ml

System Monitoring Compounds						
1) SA Tetrachlo...	3.365	3.984	56245344	19250605	7.904	8.195
28) SA Decachlor...	8.050	9.043	69274311	21234151	9.498	9.587
Target Compounds						
4) MA Heptachlor	0.000	5.187f	0	5385815	N.D.	1.768 #
5) MB Aldrin	0.000	5.444f	0	2057297	N.D.	0.742 #
8) B Heptachlo...	0.000	5.846	0	1897710	N.D.	0.759 #
10) B gamma-Chl...	5.283f	6.092	10775751	2435662	1.117	0.877
11) B alpha-Chl...	5.318	6.163	7615200	5441173	0.796	1.964 #
12) B 4,4'-DDE	5.486	6.320	15183779	6812673	1.751	2.853 #
13) MA Dieldrin	5.609	0.000	12074786	0	1.287	N.D. #
14) MA Endrin	0.000	6.680	0	2126355	N.D.	0.946 #
16) A 4,4'-DDD	0.000	6.816	0	4126050	N.D.	2.149 #
17) MA 4,4'-DDT	6.230	7.082f	24595824	2481150	3.430	1.265 #
19) B Endosulfa...	6.512	0.000	3849557	0	0.530	N.D. #
20) A Methoxychlor	6.758f	0.000	10765435	0	2.683	N.D. #

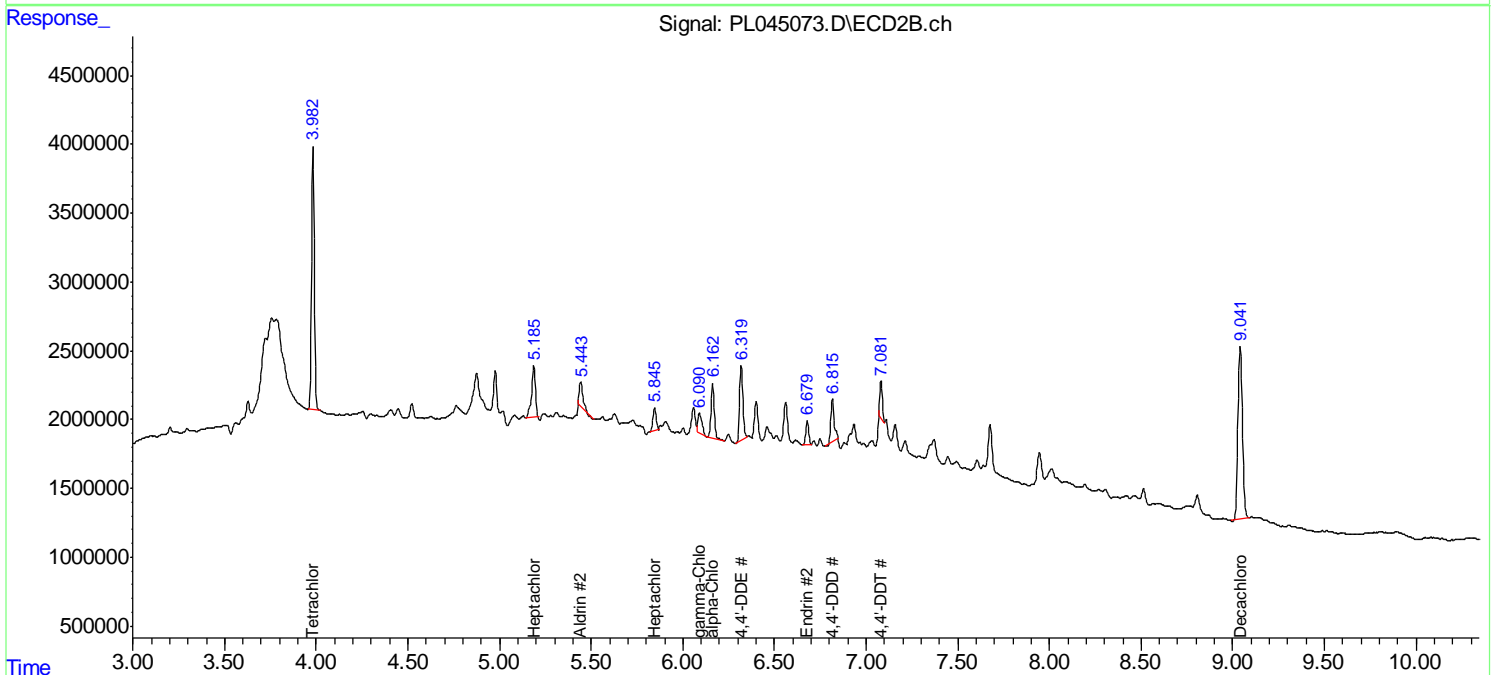
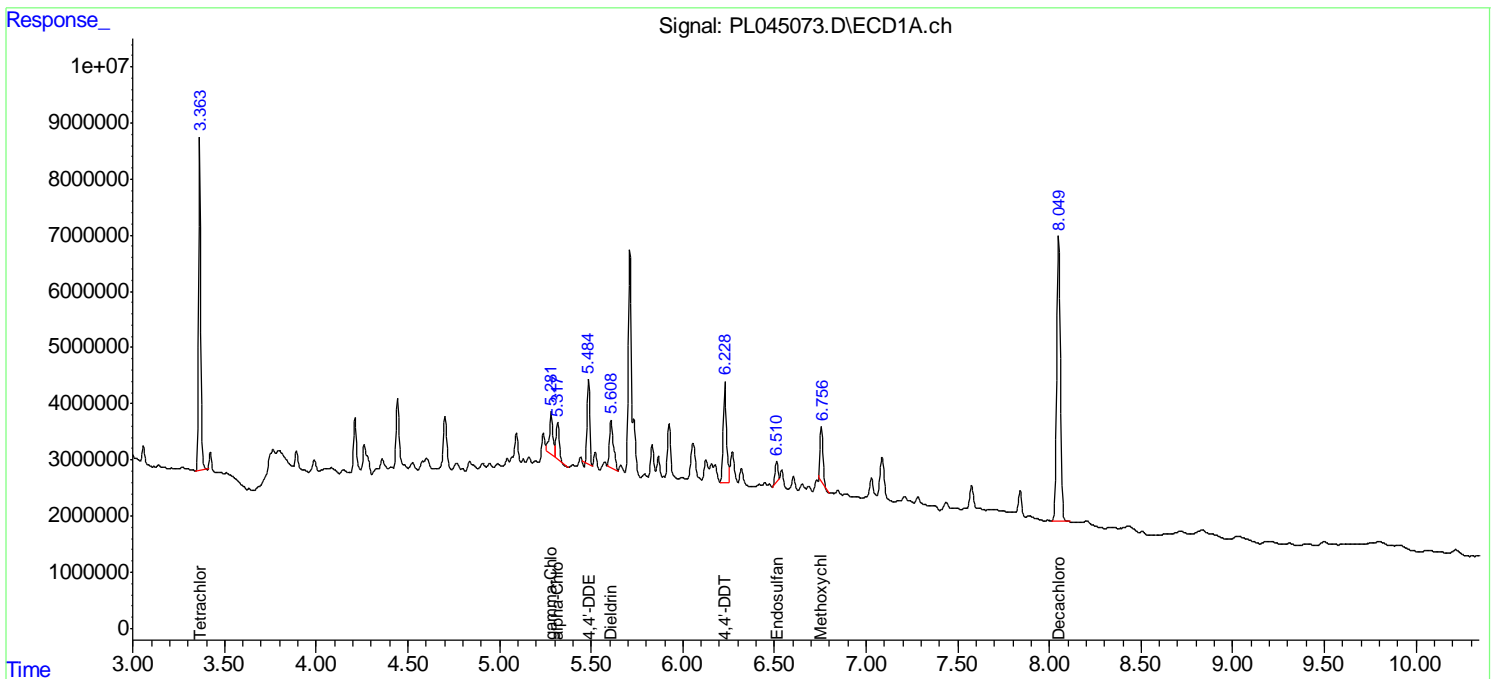
(f)=RT Delta > 1/2 Window (#)=Amounts differ by > 25% (m)=manual int.

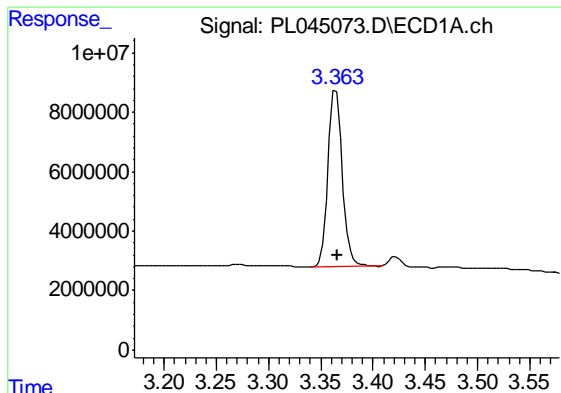
Data Path : Z:\pestpcbsrv\HPCHEM1\ECD_L\Data\PL022519\
 Data File : PL045073.D
 Signal(s) : Signal #1: ECD1A.ch Signal #2: ECD2B.ch
 Acq On : 25 Feb 2019 18:46
 Operator : AJ\SJ
 Sample : K1596-03
 Misc :
 ALS Vial : 21 Sample Multiplier: 1

Instrument :
 ECD_L
 Client Sampled :
 COMP-15

Integration File signal 1: autoint1.e
 Integration File signal 2: autoint2.e
 Quant Time: Feb 25 23:54:46 2019
 Quant Method : Z:\pestpcbsrv\HPCHEM1\ECD_L\methods\PL020619.M
 Quant Title : GC Extractables
 QLast Update : Thu Feb 07 01:39:50 2019
 Response via : Initial Calibration
 Integrator: ChemStation

Volume Inj. : 2 µl
 Signal #1 Phase : ZB-MR1 Signal #2 Phase: ZB-MR2
 Signal #1 Info : 30M x 0.32mm x0.5 Signal #2 Info : 30M x 0.32mm x0.25µm

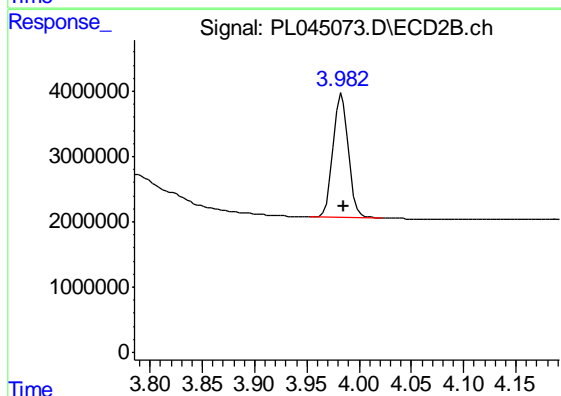




#1 Tetrachloro-m-xylene

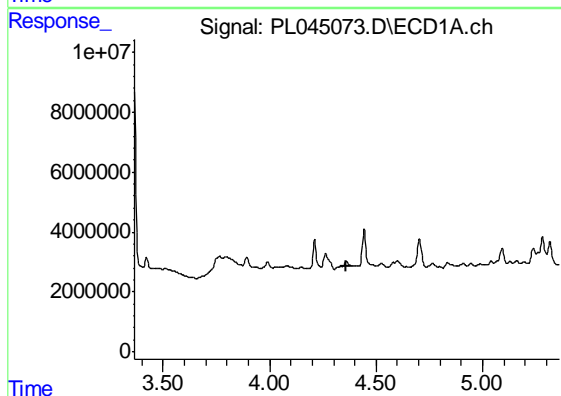
R.T.: 3.365 min
 Delta R.T.: -0.001 min
 Response: 56245344
 Conc: 7.90 ng/ml

Instrument :
 ECD_L
 ClientSampleId :
 COMP-15



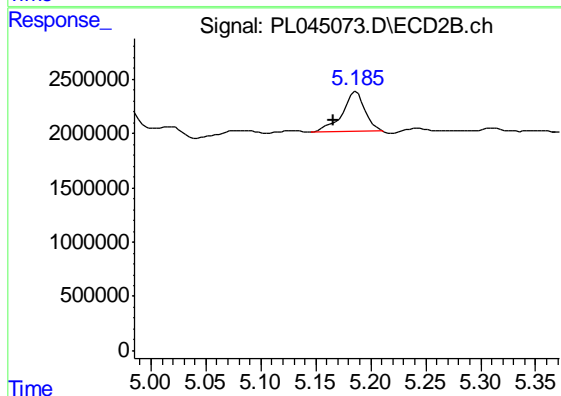
#1 Tetrachloro-m-xylene

R.T.: 3.984 min
 Delta R.T.: -0.001 min
 Response: 19250605
 Conc: 8.19 ng/ml



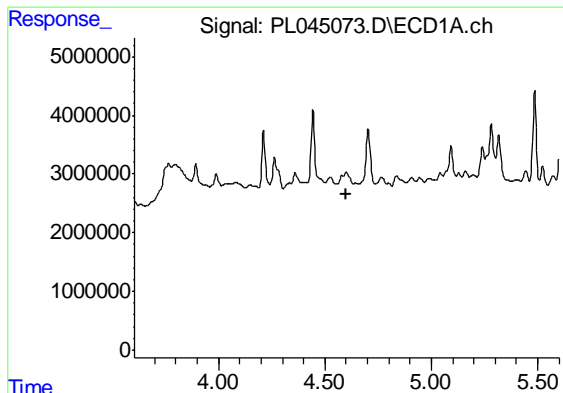
#4 Heptachlor

R.T.: 0.000 min
 Exp R.T. : 4.362 min
 Response: 0
 Conc: N.D.



#4 Heptachlor

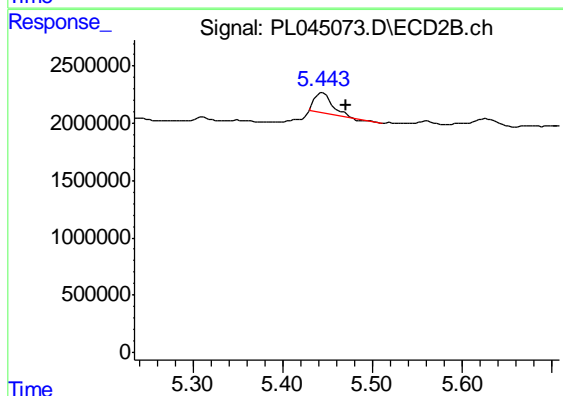
R.T.: 5.187 min
 Delta R.T.: 0.021 min
 Response: 5385815
 Conc: 1.77 ng/ml



#5 Aldrin

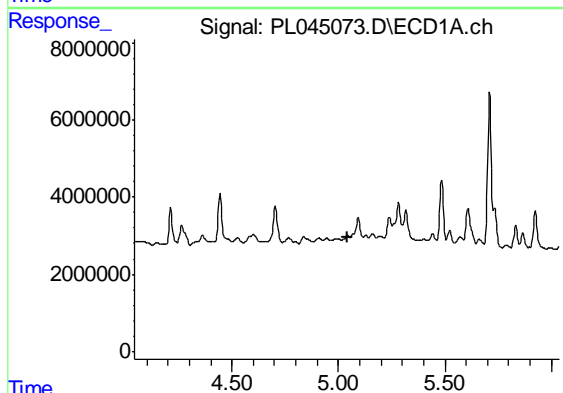
R.T.: 0.000 min
 Exp R.T. : 4.602 min
 Response: 0
 Conc: N.D.

Instrument :
 ECD_L
 ClientSampleId :
 COMP-15



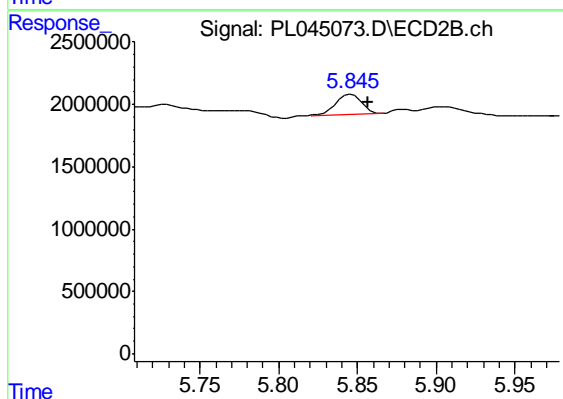
#5 Aldrin

R.T.: 5.444 min
 Delta R.T.: -0.027 min
 Response: 2057297
 Conc: 0.74 ng/ml



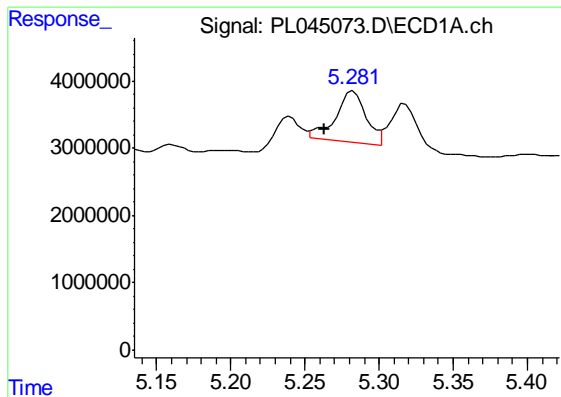
#8 Heptachlor epoxide

R.T.: 0.000 min
 Exp R.T. : 5.040 min
 Response: 0
 Conc: N.D.



#8 Heptachlor epoxide

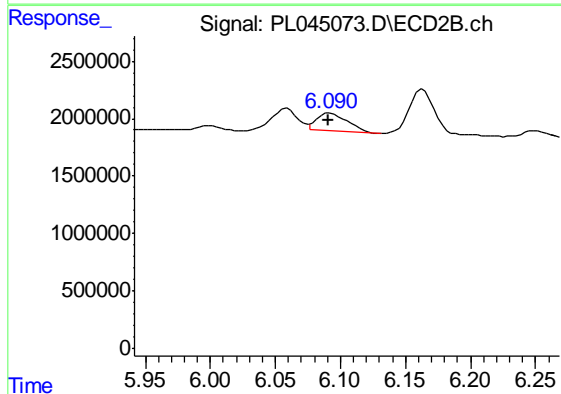
R.T.: 5.846 min
 Delta R.T.: -0.011 min
 Response: 1897710
 Conc: 0.76 ng/ml



#10 gamma-Chlordane

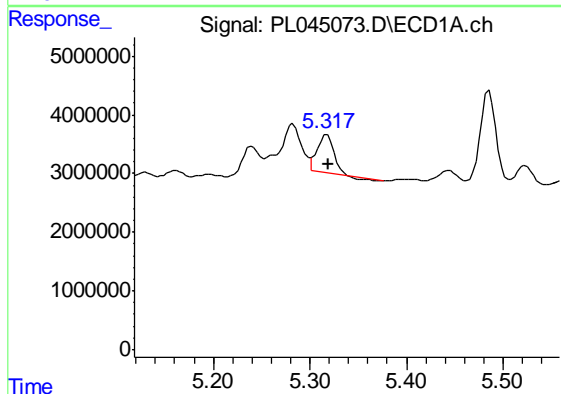
R.T.: 5.283 min
 Delta R.T.: 0.020 min
 Response: 10775751
 Conc: 1.12 ng/ml

Instrument :
 ECD_L
 ClientSampleId :
 COMP-15



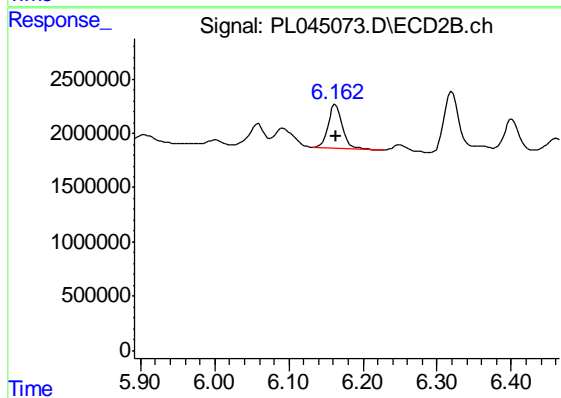
#10 gamma-Chlordane

R.T.: 6.092 min
 Delta R.T.: 0.000 min
 Response: 2435662
 Conc: 0.88 ng/ml



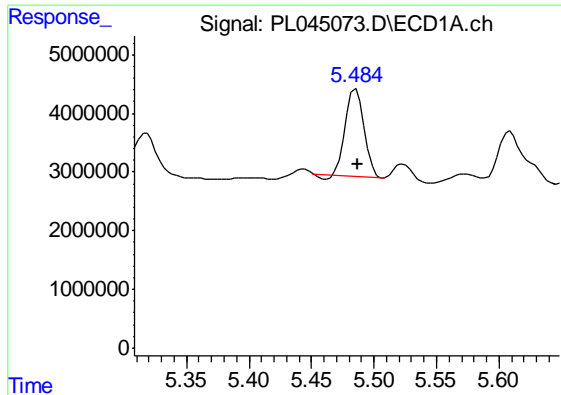
#11 alpha-Chlordane

R.T.: 5.318 min
 Delta R.T.: -0.001 min
 Response: 7615200
 Conc: 0.80 ng/ml



#11 alpha-Chlordane

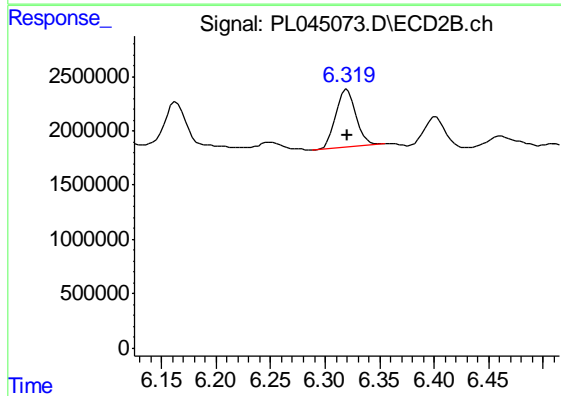
R.T.: 6.163 min
 Delta R.T.: 0.000 min
 Response: 5441173
 Conc: 1.96 ng/ml



#12 4,4'-DDE

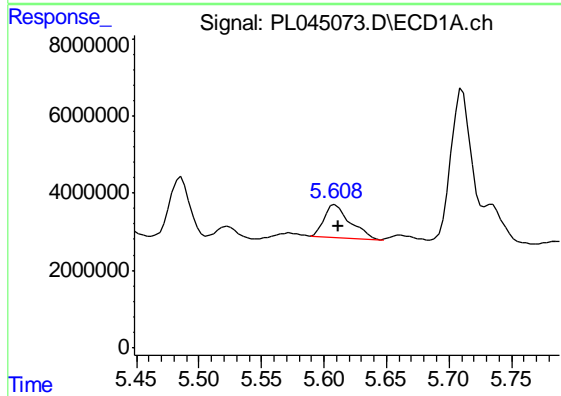
R.T.: 5.486 min
 Delta R.T.: -0.001 min
 Response: 15183779
 Conc: 1.75 ng/ml

Instrument :
 ECD_L
 ClientSampleId :
 COMP-15



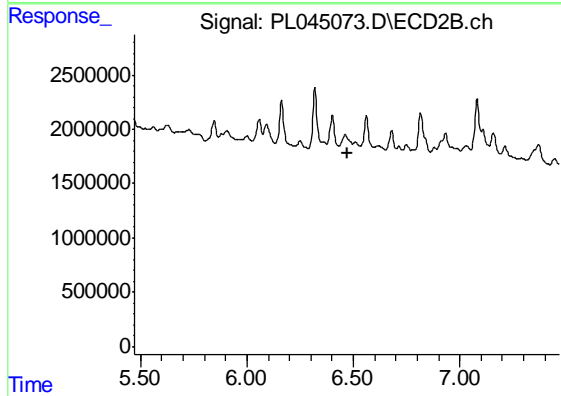
#12 4,4'-DDE

R.T.: 6.320 min
 Delta R.T.: 0.000 min
 Response: 6812673
 Conc: 2.85 ng/ml



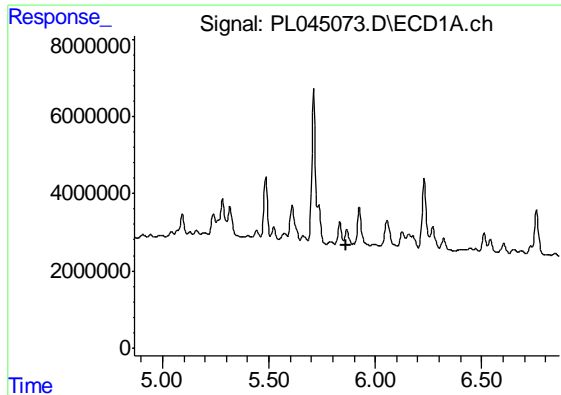
#13 Dieldrin

R.T.: 5.609 min
 Delta R.T.: -0.003 min
 Response: 12074786
 Conc: 1.29 ng/ml



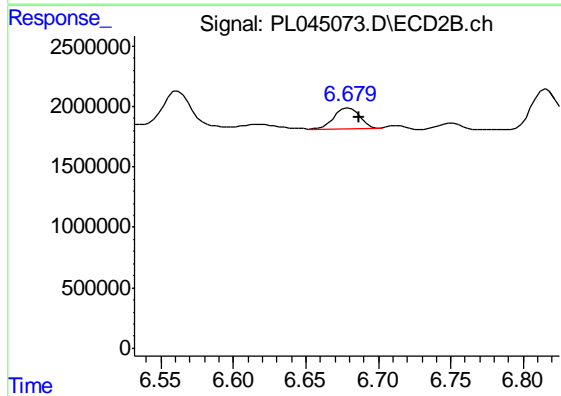
#13 Dieldrin

R.T.: 0.000 min
 Exp R.T. : 6.470 min
 Response: 0
 Conc: N.D.

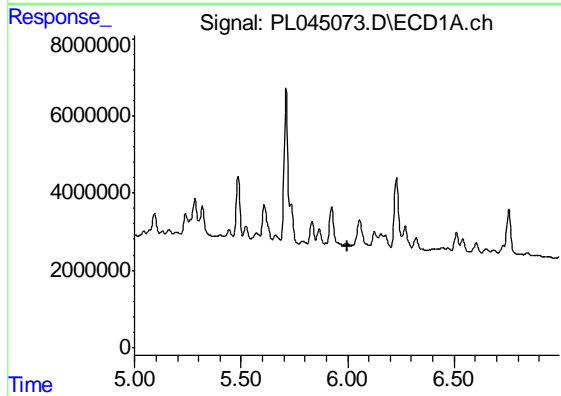


#14 Endrin
 R.T.: 0.000 min
 Exp R.T. : 5.865 min
 Response: 0
 Conc: N.D.

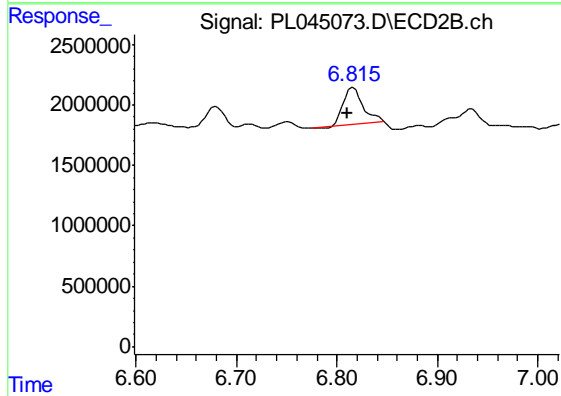
Instrument :
 ECD_L
 ClientSampled :
 COMP-15



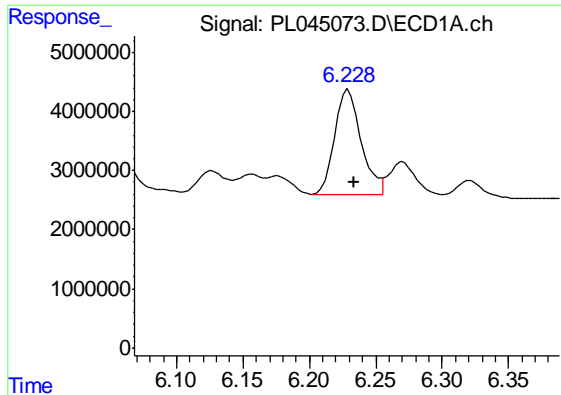
#14 Endrin
 R.T.: 6.680 min
 Delta R.T.: -0.007 min
 Response: 2126355
 Conc: 0.95 ng/ml



#16 4,4'-DDD
 R.T.: 0.000 min
 Exp R.T. : 5.998 min
 Response: 0
 Conc: N.D.



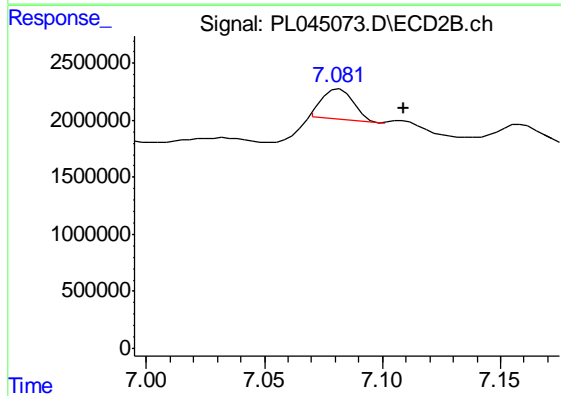
#16 4,4'-DDD
 R.T.: 6.816 min
 Delta R.T.: 0.005 min
 Response: 4126050
 Conc: 2.15 ng/ml



#17 4,4'-DDT

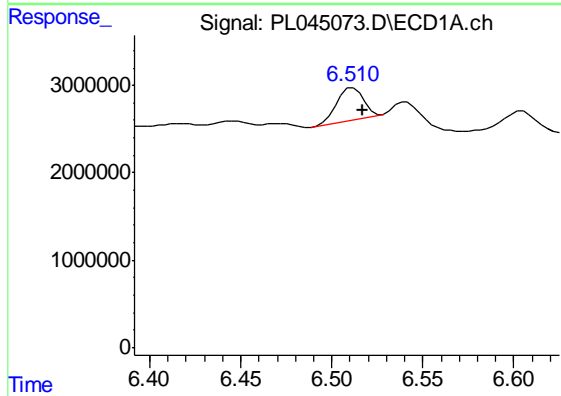
R.T.: 6.230 min
 Delta R.T.: -0.004 min
 Response: 24595824
 Conc: 3.43 ng/ml

Instrument :
 ECD_L
 ClientSampleId :
 COMP-15



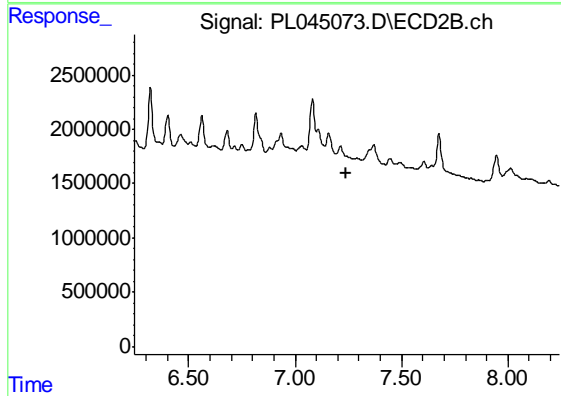
#17 4,4'-DDT

R.T.: 7.082 min
 Delta R.T.: -0.027 min
 Response: 2481150
 Conc: 1.26 ng/ml



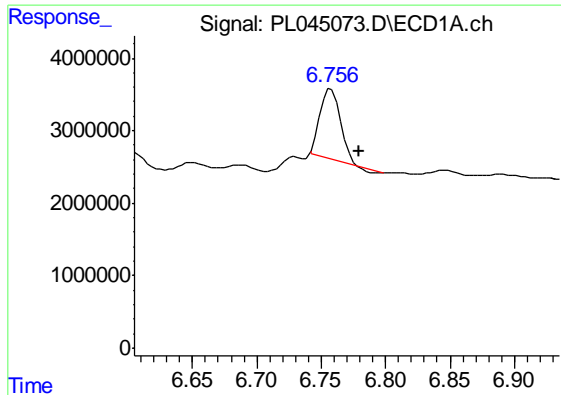
#19 Endosulfan Sulfate

R.T.: 6.512 min
 Delta R.T.: -0.005 min
 Response: 3849557
 Conc: 0.53 ng/ml



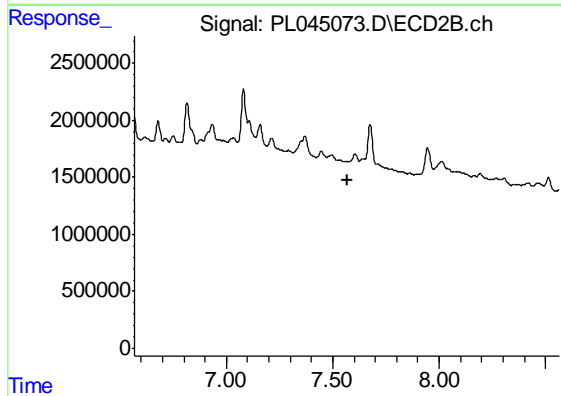
#19 Endosulfan Sulfate

R.T.: 0.000 min
 Exp R.T. : 7.243 min
 Response: 0
 Conc: N.D.

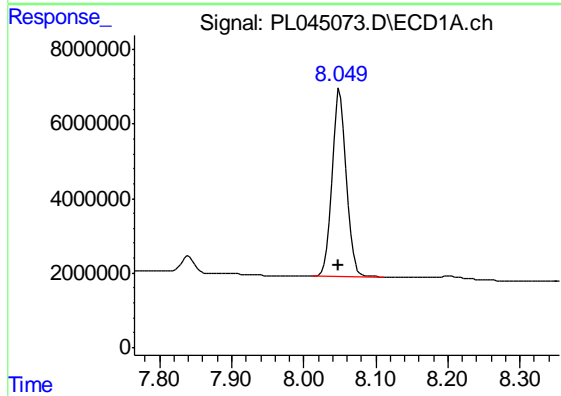


#20 Methoxychlor
 R.T.: 6.758 min
 Delta R.T.: -0.021 min
 Response: 10765435
 Conc: 2.68 ng/ml

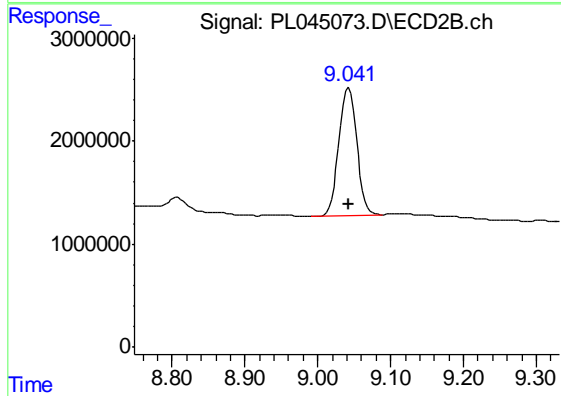
Instrument :
 ECD_L
 ClientSampleId :
 COMP-15



#20 Methoxychlor
 R.T.: 0.000 min
 Exp R.T. : 7.567 min
 Response: 0
 Conc: N.D.



#28 Decachlorobiphenyl
 R.T.: 8.050 min
 Delta R.T.: 0.001 min
 Response: 69274311
 Conc: 9.50 ng/ml



#28 Decachlorobiphenyl
 R.T.: 9.043 min
 Delta R.T.: 0.000 min
 Response: 21234151
 Conc: 9.59 ng/ml