

Data Path : Z:\pestpcbsrv\HPCHEM1\ECD_L\Data\PL022520\
 Data File : PL056817.D
 Signal(s) : Signal #1: ECD1A.ch Signal #2: ECD2B.ch
 Acq On : 25 Feb 2020 15:19
 Operator : AJ\MA
 Sample : L1586-11
 Misc :
 ALS Vial : 11 Sample Multiplier: 1

Instrument :
 ECD_L
 ClientSampleId :
 0176-COMP-BC-A-MOD-ELUTRIATE

Integration File signal 1: autoint1.e
 Integration File signal 2: autoint2.e
 Quant Time: Feb 26 04:34:52 2020
 Quant Method : Z:\pestpcbsrv\HPCHEM1\ECD_L\methods\PL021920.M
 Quant Title : GC Extractables
 QLast Update : Thu Feb 20 02:32:45 2020
 Response via : Initial Calibration
 Integrator: ChemStation

Volume Inj. : 1 µl
 Signal #1 Phase : ZB-MR2 Signal #2 Phase: ZB-MR1
 Signal #1 Info : 30M x 0.32mm x0.2 Signal #2 Info : 30M x 0.32mm x0.5µm

Compound	RT#1	RT#2	Resp#1	Resp#2	ng/ml	ng/ml
System Monitoring Compounds						
1) SA Tetrachlo...	3.498	4.020	212.0E6	66149458	24.518	26.555
28) SA Decachlor...	8.252	9.094	235.2E6	48628327	19.773	23.142
Target Compounds						
5) MB Aldrin	4.758	0.000	27399201	0	1.835	N.D. #
9) A Endosulfan I	5.525f	0.000	9920206	0	0.742	N.D. #
10) B gamma-Chl...	5.465f	0.000	34682061	0	2.388	N.D. #
11) B alpha-Chl...	5.496	0.000	21213739	0	1.469	N.D. #
15) B Endosulfa...	6.348f	0.000	21866850	0	1.761	N.D. #
17) MA 4,4'-DDT	6.419	0.000	37336725	0	3.428	N.D. #
24) Chlordane-2	4.881	0.000	9937471	0	25.475	N.D. #
25) Chlordane-3	5.465f	0.000	34682061	0	27.572	N.D. #
26) Chlordane-4	5.496	0.000	21213739	0	19.748	N.D. #
27) Chlordane-5	6.348	0.000	21866850	0	66.782	N.D. #

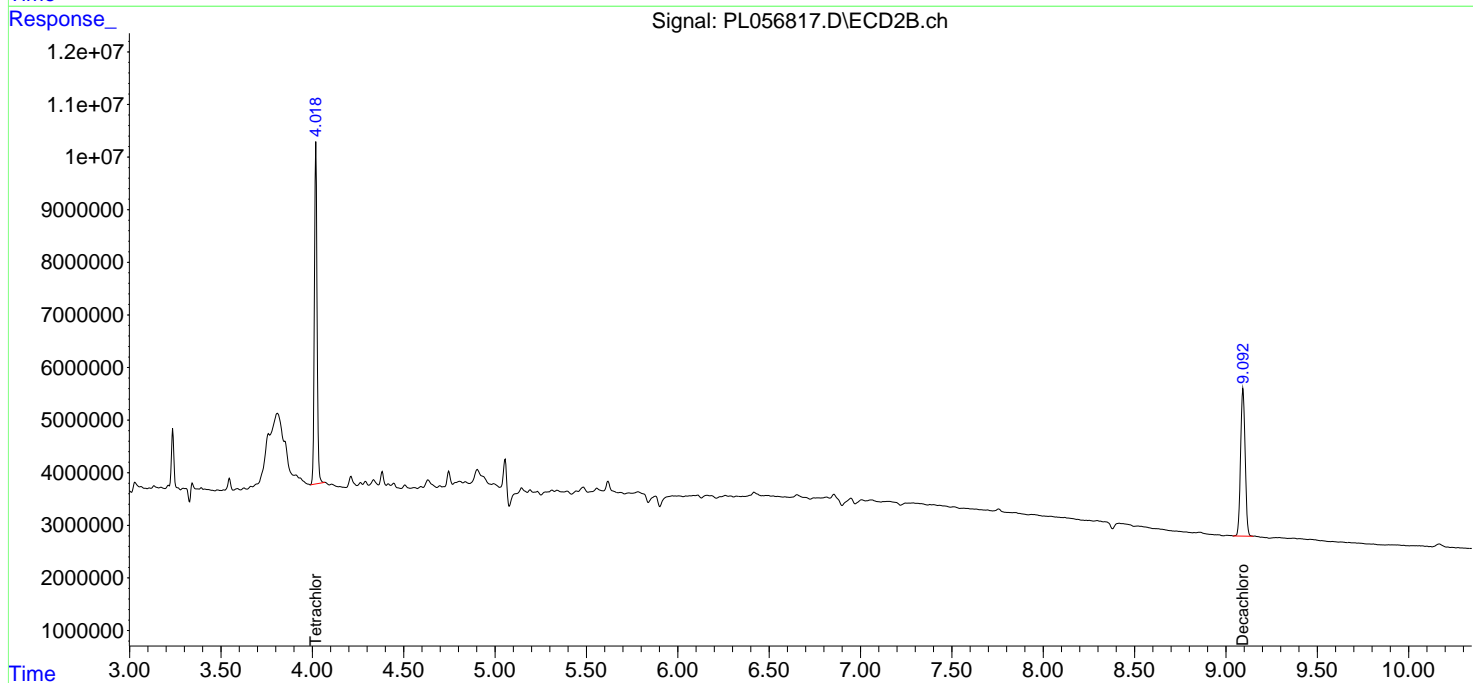
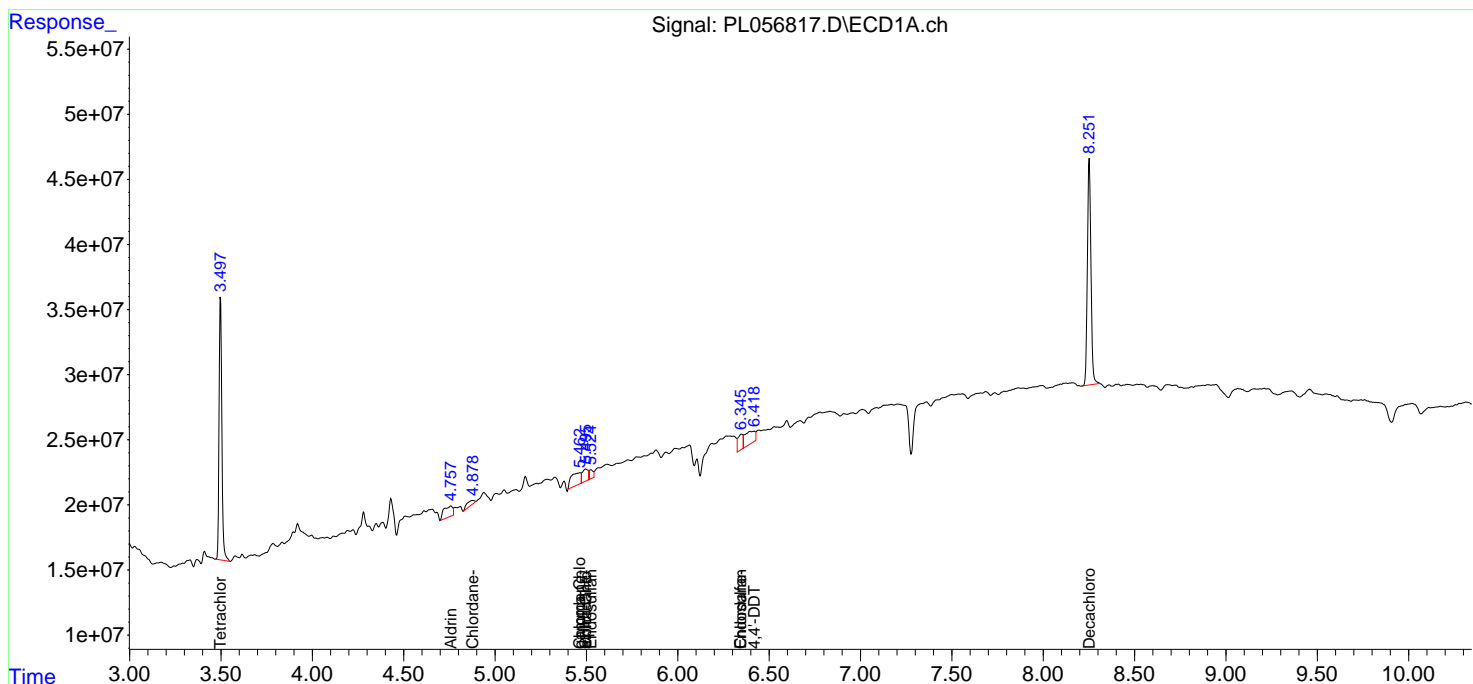
(f)=RT Delta > 1/2 Window (#)=Amounts differ by > 25% (m)=manual int.

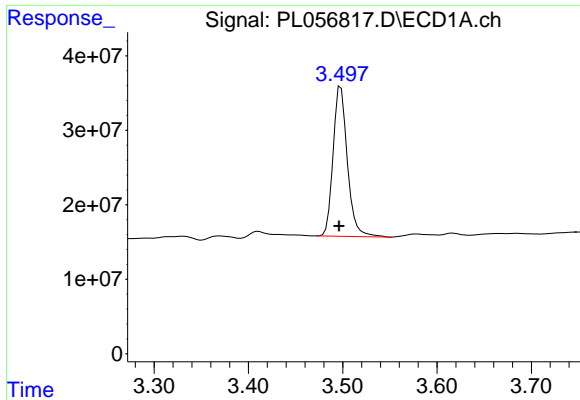
Data Path : Z:\pestpcbsrv\HPCHEM1\ECD_L\Data\PL022520\
 Data File : PL056817.D
 Signal(s) : Signal #1: ECD1A.ch Signal #2: ECD2B.ch
 Acq On : 25 Feb 2020 15:19
 Operator : AJ\MA
 Sample : L1586-11
 Misc :
 ALS Vial : 11 Sample Multiplier: 1

Instrument :
 ECD_L
 ClientSampled :
 0176-COMP-BC-A-MOD-ELUTRIATE

Integration File signal 1: autoint1.e
 Integration File signal 2: autoint2.e
 Quant Time: Feb 26 04:34:52 2020
 Quant Method : Z:\pestpcbsrv\HPCHEM1\ECD_L\methods\PL021920.M
 Quant Title : GC Extractables
 QLast Update : Thu Feb 20 02:32:45 2020
 Response via : Initial Calibration
 Integrator: ChemStation

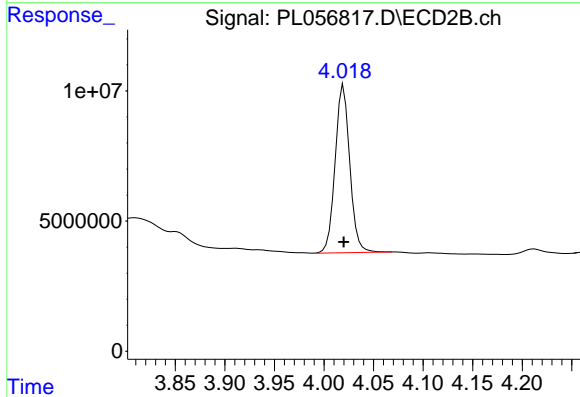
Volume Inj. : 1 µl
 Signal #1 Phase : ZB-MR2 Signal #2 Phase: ZB-MR1
 Signal #1 Info : 30M x 0.32mm x0.2 Signal #2 Info : 30M x 0.32mm x0.5µm



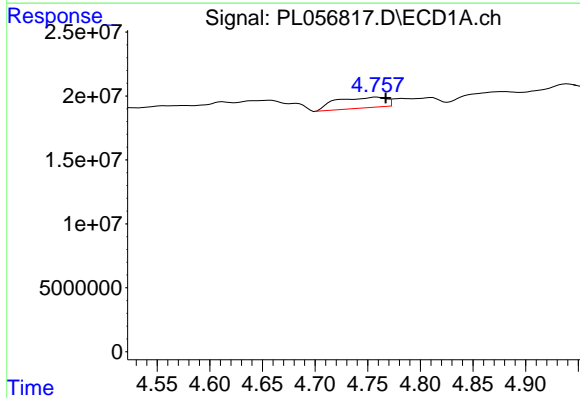


#1 Tetrachloro-m-xylene
 R.T.: 3.498 min
 Delta R.T.: 0.002 min
 Response: 212020160
 Conc: 24.52 ng/ml

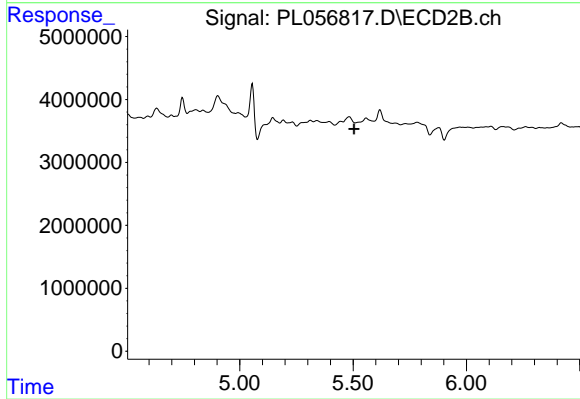
Instrument :
 ECD_L
 ClientSampleId :
 0176-COMP-BC-A-MOD-ELUTRIATE



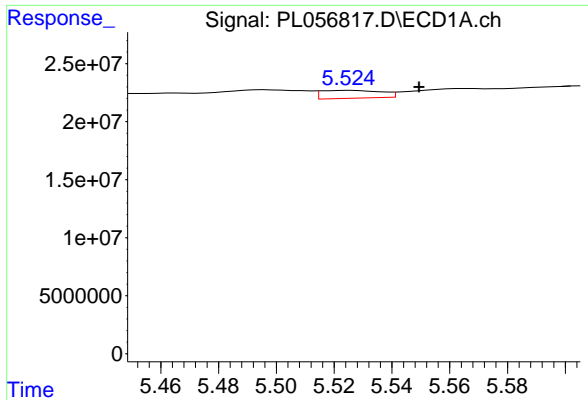
#1 Tetrachloro-m-xylene
 R.T.: 4.020 min
 Delta R.T.: 0.000 min
 Response: 66149458
 Conc: 26.56 ng/ml



#5 Aldrin
 R.T.: 4.758 min
 Delta R.T.: -0.009 min
 Response: 27399201
 Conc: 1.84 ng/ml

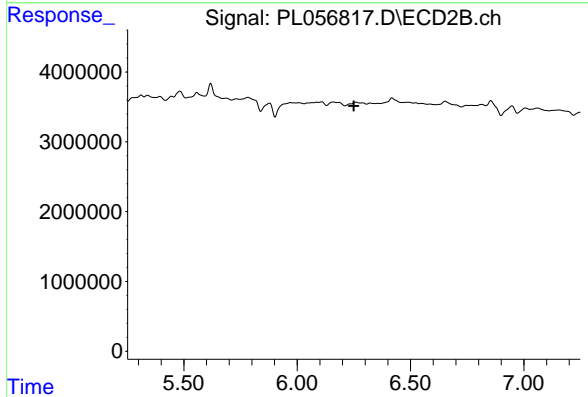


#5 Aldrin
 R.T.: 0.000 min
 Exp R.T.: 5.505 min
 Response: 0
 Conc: N.D.

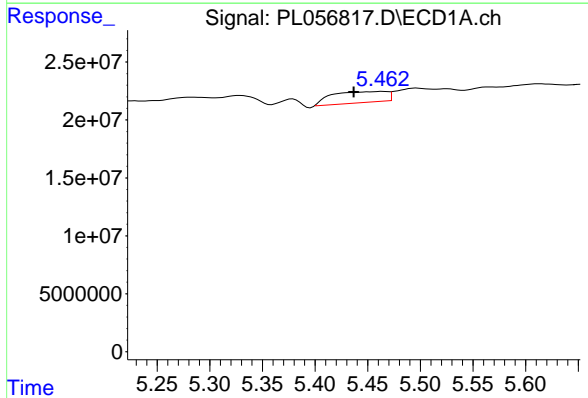


#9 Endosulfan I
 R.T.: 5.525 min
 Delta R.T.: -0.024 min
 Response: 9920206
 Conc: 0.74 ng/ml

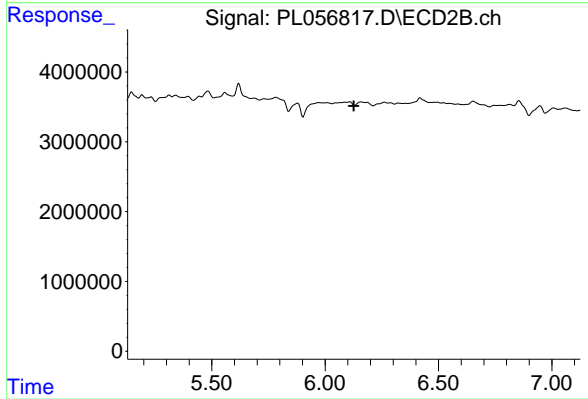
Instrument :
 ECD_L
 ClientSampleId :
 0176-COMP-BC-A-MOD-ELUTRIATE



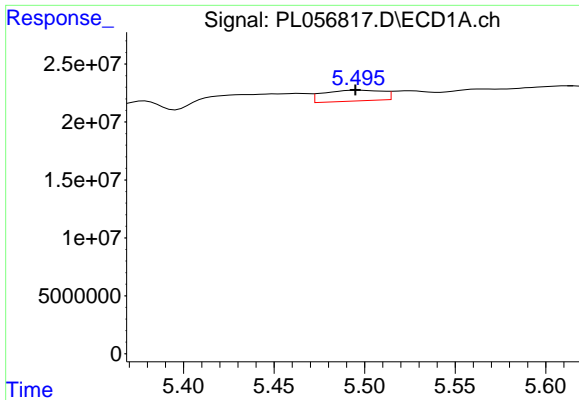
#9 Endosulfan I
 R.T.: 0.000 min
 Exp R.T. : 6.250 min
 Response: 0
 Conc: N.D.



#10 gamma-Chlordane
 R.T.: 5.465 min
 Delta R.T.: 0.028 min
 Response: 34682061
 Conc: 2.39 ng/ml

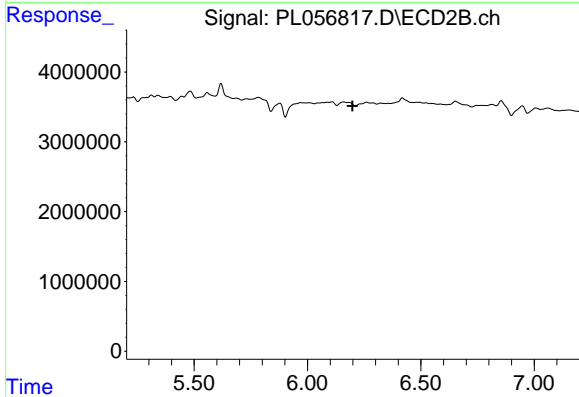


#10 gamma-Chlordane
 R.T.: 0.000 min
 Exp R.T. : 6.127 min
 Response: 0
 Conc: N.D.

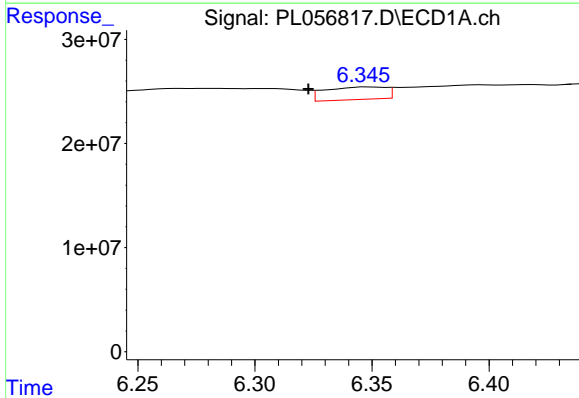


#11 alpha-Chlordane
 R.T.: 5.496 min
 Delta R.T.: 0.002 min
 Response: 21213739
 Conc: 1.47 ng/ml

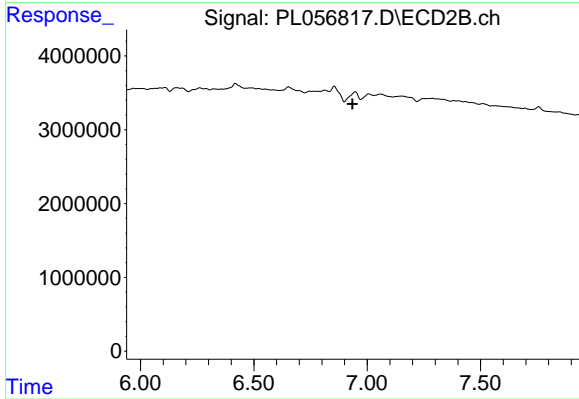
Instrument :
 ECD_L
 ClientSampleId :
 0176-COMP-BC-A-MOD-ELUTRIATE



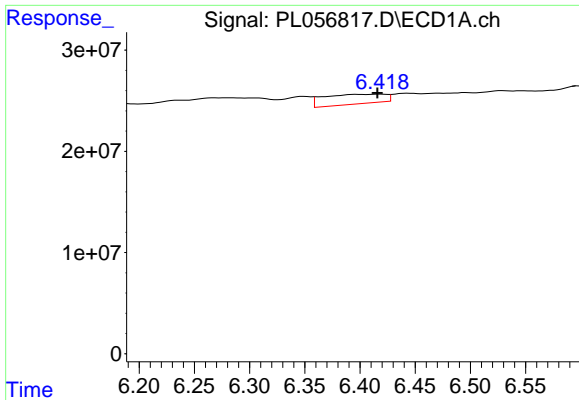
#11 alpha-Chlordane
 R.T.: 0.000 min
 Exp R.T. : 6.199 min
 Response: 0
 Conc: N.D.



#15 Endosulfan II
 R.T.: 6.348 min
 Delta R.T.: 0.025 min
 Response: 21866850
 Conc: 1.76 ng/ml

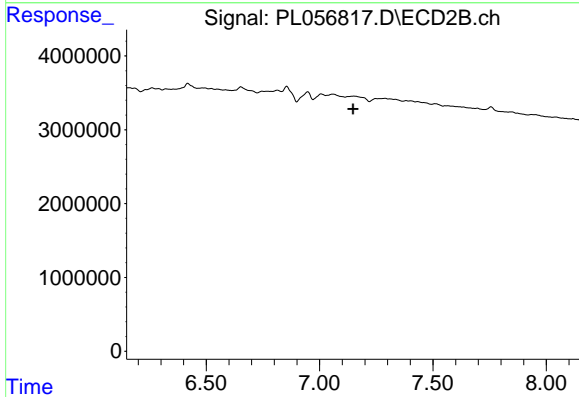


#15 Endosulfan II
 R.T.: 0.000 min
 Exp R.T. : 6.936 min
 Response: 0
 Conc: N.D.

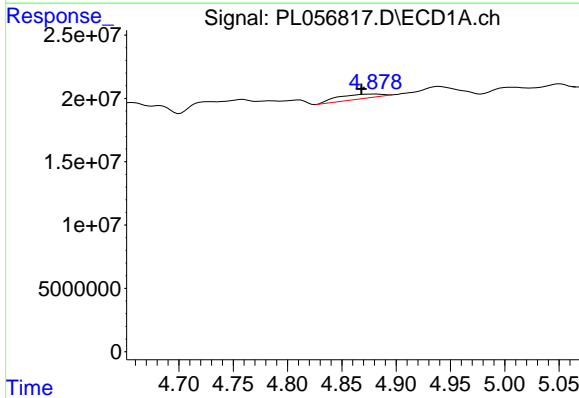


#17 4,4'-DDT
 R.T.: 6.419 min
 Delta R.T.: 0.003 min
 Response: 37336725
 Conc: 3.43 ng/ml

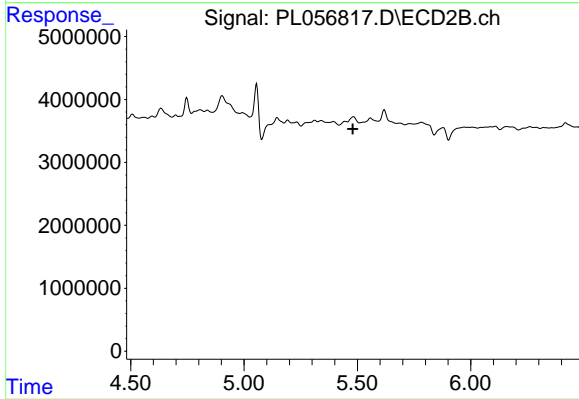
Instrument :
 ECD_L
 ClientSampleId :
 0176-COMP-BC-A-MOD-ELUTRIATE



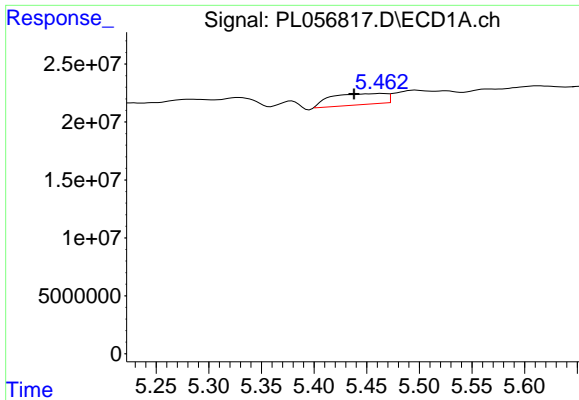
#17 4,4'-DDT
 R.T.: 0.000 min
 Exp R.T. : 7.148 min
 Response: 0
 Conc: N.D.



#24 Chlordane-2
 R.T.: 4.881 min
 Delta R.T.: 0.013 min
 Response: 9937471
 Conc: 25.48 ng/ml

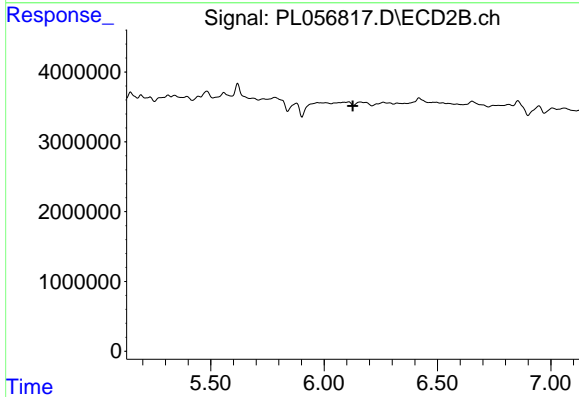


#24 Chlordane-2
 R.T.: 0.000 min
 Exp R.T. : 5.480 min
 Response: 0
 Conc: N.D.

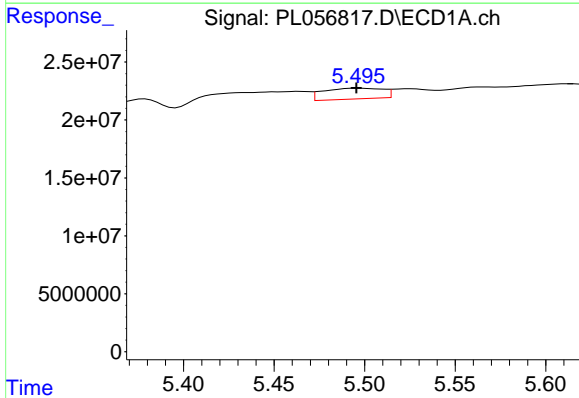


#25 Chlordane-3
 R.T.: 5.465 min
 Delta R.T.: 0.027 min
 Response: 34682061
 Conc: 27.57 ng/ml

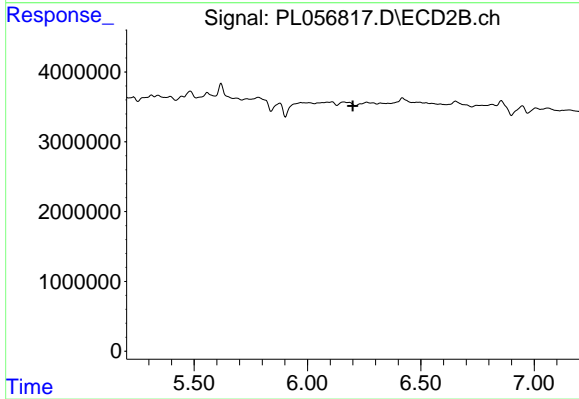
Instrument :
 ECD_L
 ClientSampleId :
 0176-COMP-BC-A-MOD-ELUTRIATE



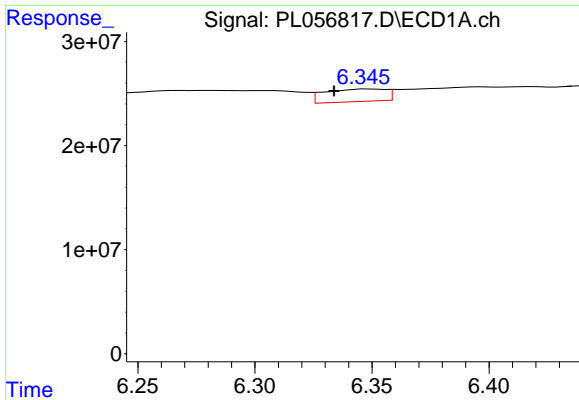
#25 Chlordane-3
 R.T.: 0.000 min
 Exp R.T. : 6.126 min
 Response: 0
 Conc: N.D.



#26 Chlordane-4
 R.T.: 5.496 min
 Delta R.T.: 0.001 min
 Response: 21213739
 Conc: 19.75 ng/ml

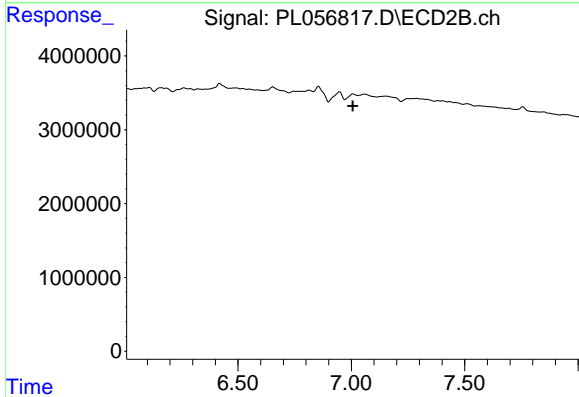


#26 Chlordane-4
 R.T.: 0.000 min
 Exp R.T. : 6.200 min
 Response: 0
 Conc: N.D.

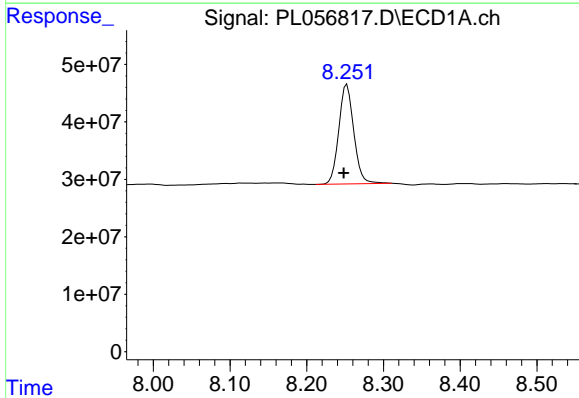


#27 Chlordane-5
 R.T.: 6.348 min
 Delta R.T.: 0.014 min
 Response: 21866850
 Conc: 66.78 ng/ml

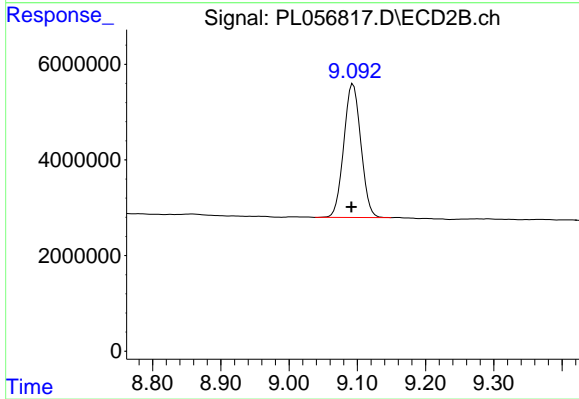
Instrument :
 ECD_L
 ClientSampleId :
 0176-COMP-BC-A-MOD-ELUTRIATE



#27 Chlordane-5
 R.T.: 0.000 min
 Exp R.T. : 7.007 min
 Response: 0
 Conc: N.D.



#28 Decachlorobiphenyl
 R.T.: 8.252 min
 Delta R.T.: 0.004 min
 Response: 235198822
 Conc: 19.77 ng/ml



#28 Decachlorobiphenyl
 R.T.: 9.094 min
 Delta R.T.: 0.003 min
 Response: 48628327
 Conc: 23.14 ng/ml