

Data Path : Z:\pestpcbsrv\HPCHEM1\ECD_L\Data\PL022522\
 Data File : PL072983.D
 Signal(s) : Signal #1: ECD1A.ch Signal #2: ECD2B.ch
 Acq On : 25 Feb 2022 22:57
 Operator : AR\AJ
 Sample : TOXAPHENE303
 Misc :
 ALS Vial : 20 Sample Multiplier: 1

Instrument :
 ECD_L
 ClientSampleId :

Integration File signal 1: autoint1.e
 Integration File signal 2: autoint2.e
 Quant Time: Mar 01 02:05:14 2022
 Quant Method : Z:\pestpcbsrv\HPCHEM1\ECD_L\methods\PL022522CLP.M
 Quant Title : GC Extractables
 QLast Update : Tue Mar 01 01:47:07 2022
 Response via : Initial Calibration
 Integrator: ChemStation

Volume Inj. : 1 µl
 Signal #1 Phase : ZB-MR2 Signal #2 Phase: ZB-MR1
 Signal #1 Info : 30M x 0.32mm x0.2 Signal #2 Info : 30M x 0.32mm x 0.50µm

Compound	RT#1	RT#2	Resp#1	Resp#2	ng/ml	ng/ml

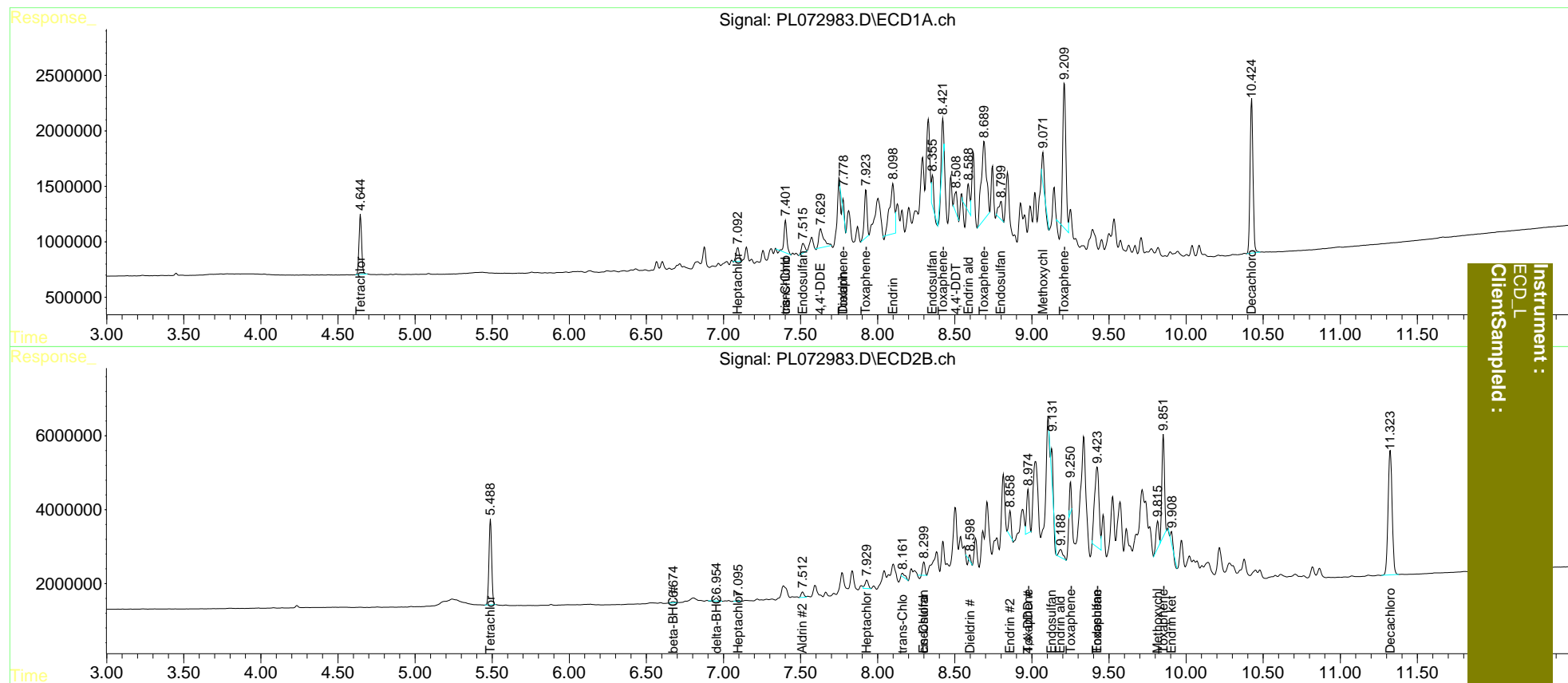
System Monitoring Compounds						
1) SA Tetrachlo...	4.646	5.489	6314105	28529025	18.361	18.274
2) SA Decachlor...	10.426	11.324	18333395	61451586	38.130	38.020
Target Compounds						
4) MA Heptachlor	0.000	7.096	0	372872	N.D.	0.184
5) MB Aldrin	0.000	7.513f	0	1913152	N.D.	1.058
6) B beta-BHC	0.000	6.675	0	579889	N.D.	0.593
7) B delta-BHC	0.000	6.955	0	1212044	N.D.	0.627
8) B Heptachlo...	7.094	7.930	1691832	3462379	3.608	2.035 #
9) A Endosulfan I	7.516	8.300	1277607	3356309	2.829	2.106 #
10) B trans-Chl...	7.402	8.161	3586991	1649357	7.521	0.945 #
11) B cis-Chlor...	7.402f	8.300	3586991	3356309	7.518	1.966 #
12) B 4,4'-DDE	7.630	0.000	3729038	0	9.650	N.D. #
13) MA Dieldrin	7.776	8.598	171735	264256	0.367	0.159 #
14) MA Endrin	8.099	8.859	9561088	6258774	23.520	4.685 #
15) B Endosulfa...	8.356	9.129f	2448360	1377148	5.225	0.950 #
16) A 4,4'-DDD	8.246	8.976	-962980	13930877	N.D.	10.608
18) B Endrin al...	8.588	9.187	1299820	3927749	3.909	3.672
19) B Endosulfa...	8.801	9.424	2509622	43853414	5.737	31.872 #
20) A Methoxychlor	9.072	9.816	2149166	8978972	8.772	11.724 #
21) B Endrin ke...	0.000	9.906	0	2290287	N.D.	1.616
23) Toxaphene-2	7.924	8.976f	5314289	13930877	1803.545	665.610 #
24) Toxaphene-3	8.423	9.251	2658765	6328515	328.583	462.202 #
25) Toxaphene-4	8.691	9.424	16309682	43853414	1859.968	1926.155
26) Toxaphene-5	9.211	9.853	17479880	31726412	1746.477	1869.181

(f)=RT Delta > 1/2 Window (#)=Amounts differ by > 25% (m)=manual int.

Data Path : Z:\pestpcbsrv\HPCHEM1\ECD_L\Data\PL022522\
 Data File : PL072983.D
 Signal(s) : Signal #1: ECD1A.ch Signal #2: ECD2B.ch
 Acq On : 25 Feb 2022 22:57
 Operator : AR\AJ
 Sample : TOXAPHENE303
 Misc :
 ALS Vial : 20 Sample Multiplier: 1

Integration File signal 1: autoint1.e
 Integration File signal 2: autoint2.e
 Quant Time: Mar 01 02:05:14 2022
 Quant Method : Z:\pestpcbsrv\HPCHEM1\ECD_L\methods\PL022522CLP.M
 Quant Title : GC Extractables
 QLast Update : Tue Mar 01 01:47:07 2022
 Response via : Initial Calibration
 Integrator: ChemStation

Volume Inj. : 1 µl
 Signal #1 Phase : ZB-MR2 Signal #2 Phase: ZB-MR1
 Signal #1 Info : 30M x 0.32mm x0.2 Signal #2 Info : 30M x 0.32mm x 0.50µm



Instrument : ECD_L
 Client/Sample : TOXAPHENE303