

Data Path : Z:\pestpcbsrv\HPCHEM1\ECD\_L\Data\PL022822\  
 Data File : PL073051.D  
 Signal(s) : Signal #1: ECD1A.ch Signal #2: ECD2B.ch  
 Acq On : 28 Feb 2022 19:51  
 Operator : AR\AJ  
 Sample : N1679-04MSD  
 Misc :  
 ALS Vial : 33 Sample Multiplier: 1

**Instrument :**  
 ECD\_L  
**ClientSampleId :**  
 RO-VNJ-221MSD

**Manual Integrations**  
**APPROVED**  
 Reviewed By :Abdul Mirza 03/01/2022  
 Supervised By :Ankita Jodhani 03/01/2022

Integration File signal 1: autoint1.e  
 Integration File signal 2: autoint2.e  
 Quant Time: Mar 01 02:30:46 2022  
 Quant Method : Z:\pestpcbsrv\HPCHEM1\ECD\_L\methods\PL022622.M  
 Quant Title : GC Extractables  
 QLast Update : Mon Feb 28 02:28:04 2022  
 Response via : Initial Calibration  
 Integrator: ChemStation

Volume Inj. : 1 µl  
 Signal #1 Phase : ZB-MR2 Signal #2 Phase: ZB-MR1  
 Signal #1 Info : 30M x 0.32mm x0.2 Signal #2 Info : 30M x 0.32mm x0.5µm

Compound	RT#1	RT#2	Resp#1	Resp#2	ng/ml	ng/ml
-----						
System Monitoring Compounds						
1) SA Tetrachlo...	4.647	5.476	5459542	102.3E6	17.037	70.498m#
28) SA Decachlor...	10.426	11.324	6386277	21295587	13.644	13.499m
Target Compounds						
2) A alpha-BHC	5.356	6.051	19124707	85609489	45.383	43.406m
3) MA gamma-BHC...	5.778	6.440	19930892	89752109	45.073m	48.004m
4) MA Heptachlor	6.192	7.100	21149591	89719489	46.077	44.883
5) MB Aldrin	6.518	7.466	20042381	87861244	45.192	48.009m
6) B beta-BHC	6.159	6.677	10009906	37856667	44.947	41.980
7) B delta-BHC	6.421	6.944	19903063	85617046	45.577	45.239
8) B Heptachlo...	7.095	7.922	22985885	81067647	49.337	46.055m
9) A Endosulfan I	7.498	8.324	20148726	79743590	45.426	49.227
10) B gamma-Chl...	7.373	8.191	23112862	92537665	48.670	51.821
11) B alpha-Chl...	7.442	8.274	22791520	91555168	47.620	52.004
12) B 4,4'-DDE	7.656	8.459	18853540	73699180	48.505	47.137
13) MA Dieldrin	7.784	8.609	21619015	77910186	48.245	48.239
14) MA Endrin	8.075	8.843	19872125	63839549	50.047	48.226
15) B Endosulfa...	8.386	9.066	21009342	64728879	48.439	46.774
16) A 4,4'-DDD	8.242	8.985	16328861	62870893	46.885	47.277
17) MA 4,4'-DDT	8.503	9.303	18744668	67275895	49.257	49.047
18) B Endrin al...	8.584	9.199	159.5E6	49009996	496.920	45.038 #
19) B Endosulfa...	8.806	9.435	20684785	68590510	47.056	48.378m
20) A Methoxychlor	9.100	9.783	12477860	39664753	49.958	50.664
21) B Endrin ke...	9.324	9.923	22697963	77436852	45.784	52.814m
22) Mirex	9.514	10.401	24976310	62154650	44.266	42.323
-----						

(f)=RT Delta > 1/2 Window (#)=Amounts differ by > 25% (m)=manual int.

Data Path : Z:\pestpcbsrv\HPCHEM1\ECD\_L\Data\PL022822\  
 Data File : PL073051.D  
 Signal(s) : Signal #1: ECD1A.ch Signal #2: ECD2B.ch  
 Acq On : 28 Feb 2022 19:51  
 Operator : AR\AJ  
 Sample : N1679-04MSD  
 Misc :  
 ALS Vial : 33 Sample Multiplier: 1

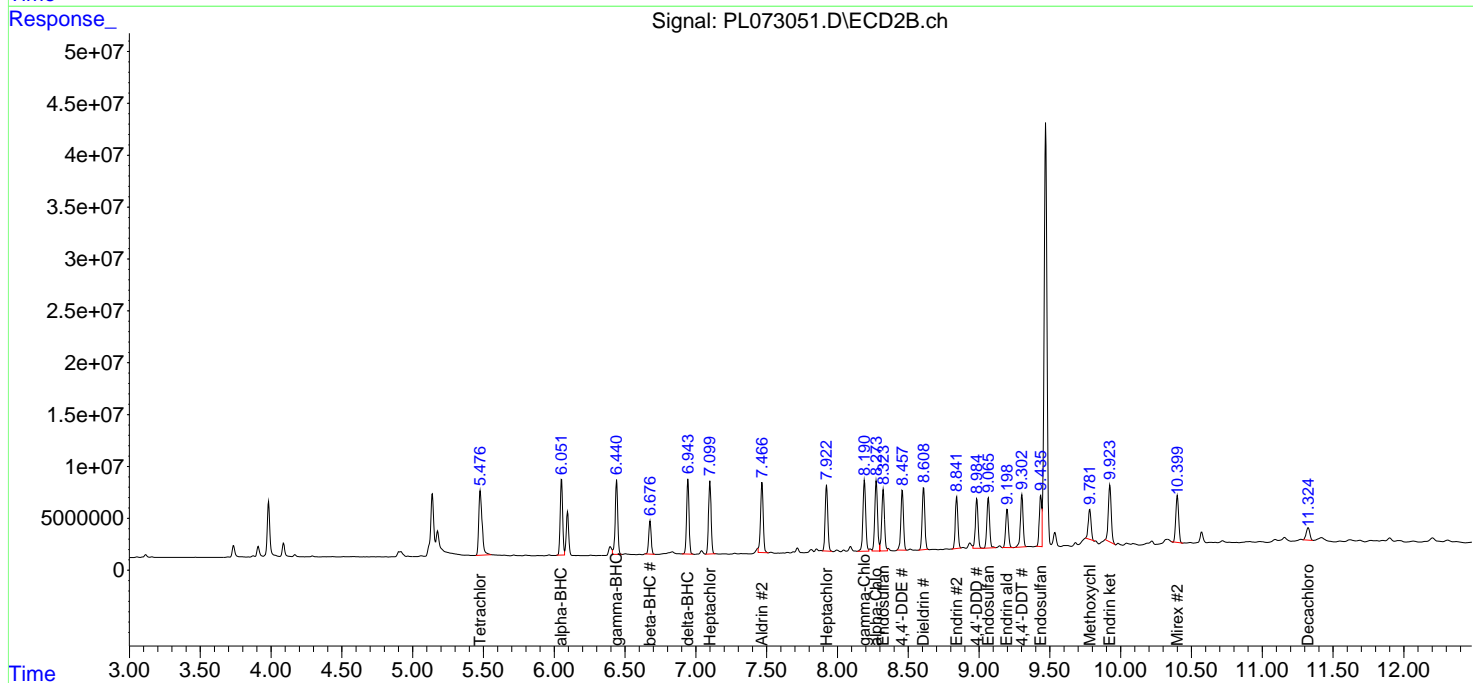
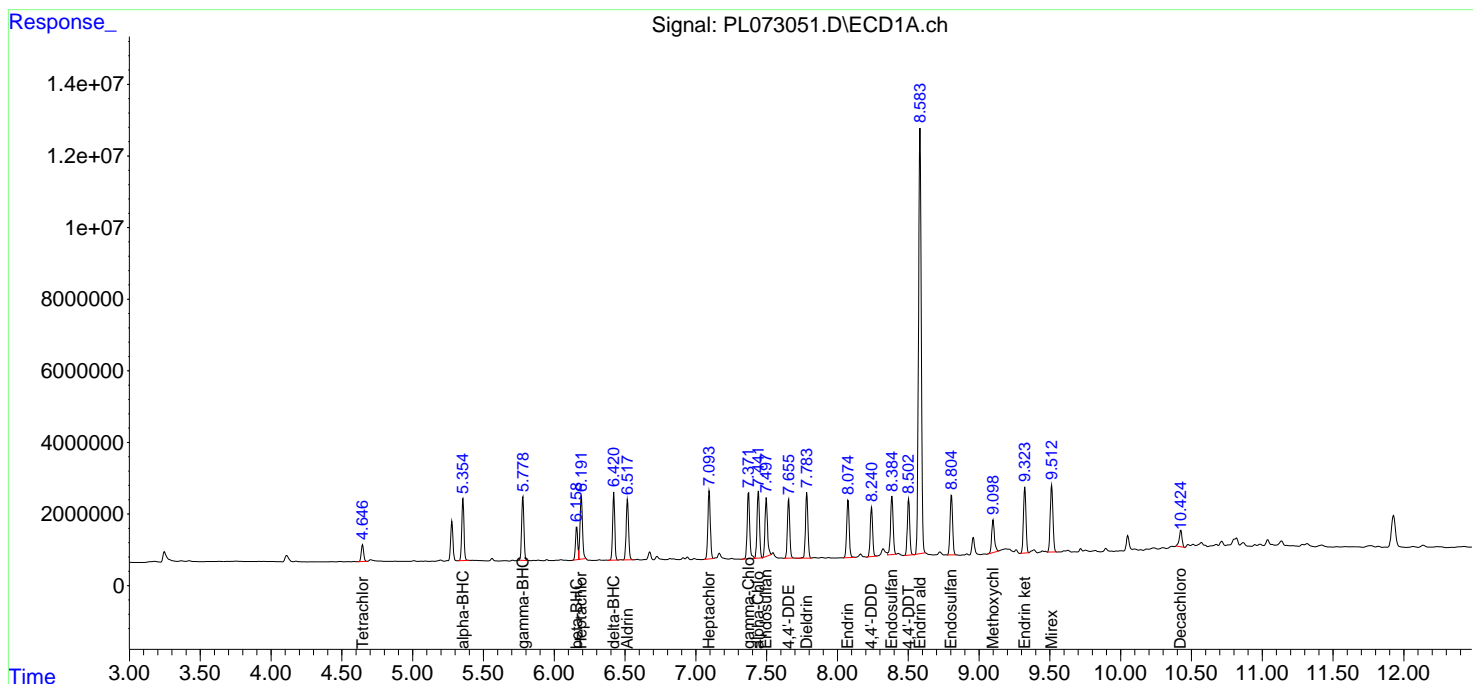
**Instrument :**  
 ECD\_L  
**ClientSampleId :**  
 RO-VNJ-221MSD

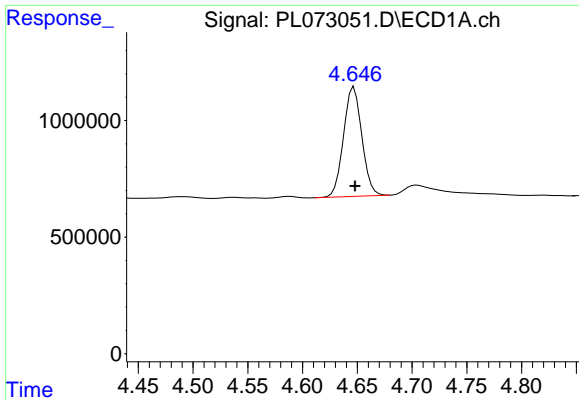
**Manual Integrations**  
**APPROVED**

Reviewed By :Abdul Mirza 03/01/2022  
 Supervised By :Ankita Jodhani 03/01/2022

Integration File signal 1: autoint1.e  
 Integration File signal 2: autoint2.e  
 Quant Time: Mar 01 02:30:46 2022  
 Quant Method : Z:\pestpcbsrv\HPCHEM1\ECD\_L\methods\PL022622.M  
 Quant Title : GC Extractables  
 QLast Update : Mon Feb 28 02:28:04 2022  
 Response via : Initial Calibration  
 Integrator: ChemStation

Volume Inj. : 1 µl  
 Signal #1 Phase : ZB-MR2 Signal #2 Phase: ZB-MR1  
 Signal #1 Info : 30M x 0.32mm x0.2 Signal #2 Info : 30M x 0.32mm x0.5µm

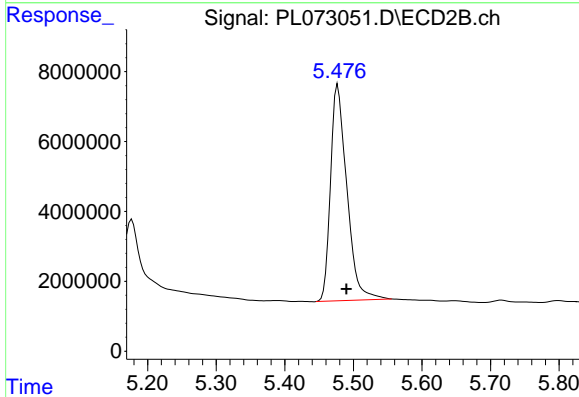




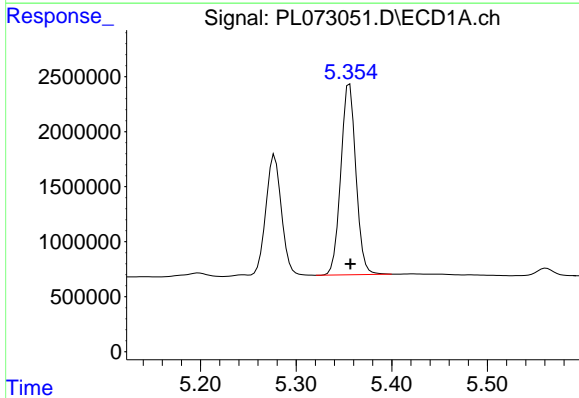
#1 Tetrachloro-m-xylene  
 R.T.: 4.647 min  
 Delta R.T.: -0.001 min  
 Response: 5459542  
 Conc: 17.04 ng/ml

Instrument : ECD\_L  
 ClientSampleId : RO-VNJ-221MSD

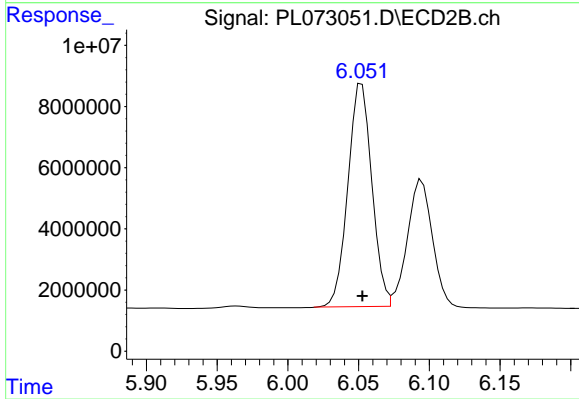
**Manual Integrations**  
**APPROVED**  
 Reviewed By :Abdul Mirza 03/01/2022  
 Supervised By :Ankita Jodhani 03/01/2022



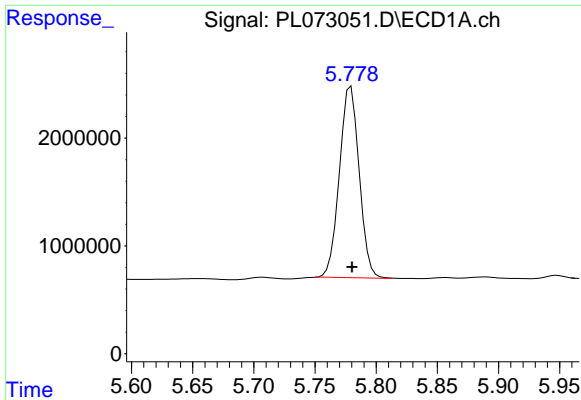
#1 Tetrachloro-m-xylene  
 R.T.: 5.476 min  
 Delta R.T.: -0.014 min  
 Response: 102305882  
 Conc: 70.50 ng/ml m



#2 alpha-BHC  
 R.T.: 5.356 min  
 Delta R.T.: -0.001 min  
 Response: 19124707  
 Conc: 45.38 ng/ml



#2 alpha-BHC  
 R.T.: 6.051 min  
 Delta R.T.: -0.002 min  
 Response: 85609489  
 Conc: 43.41 ng/ml m

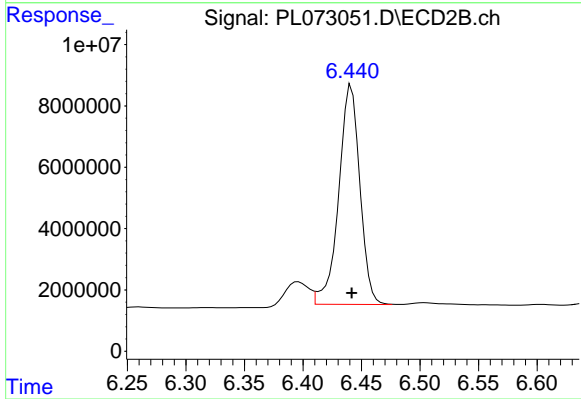


#3 gamma-BHC (Lindane)  
 R.T.: 5.778 min  
 Delta R.T.: -0.002 min  
 Response: 19930892  
 Conc: 45.07 ng/ml

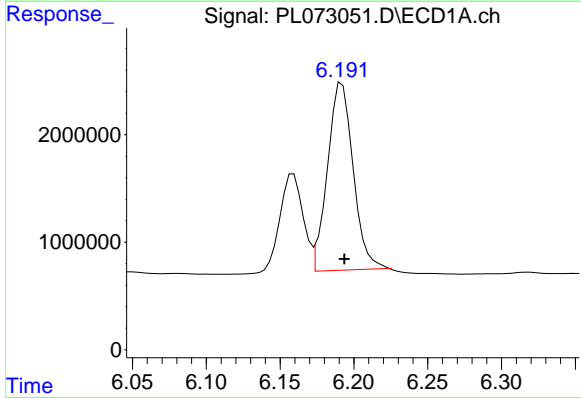
Instrument :  
 ECD\_L  
 ClientSampleId :  
 RO-VNJ-221MSD

Manual Integrations  
 APPROVED

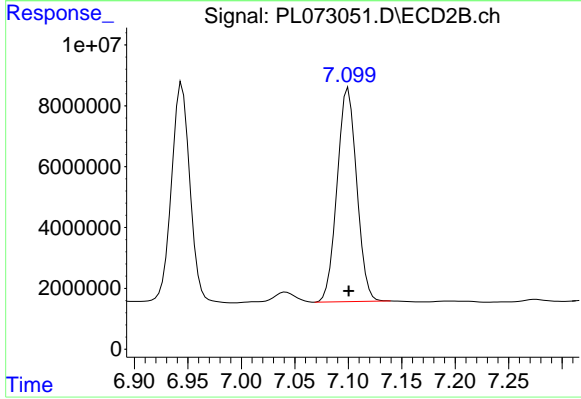
Reviewed By :Abdul Mirza 03/01/2022  
 Supervised By :Ankita Jodhani 03/01/2022



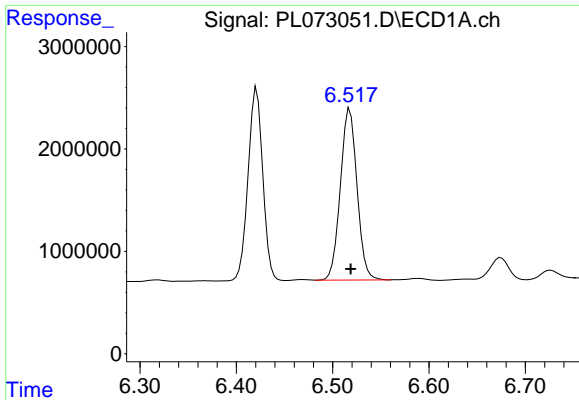
#3 gamma-BHC (Lindane)  
 R.T.: 6.440 min  
 Delta R.T.: -0.002 min  
 Response: 89752109  
 Conc: 48.00 ng/ml m



#4 Heptachlor  
 R.T.: 6.192 min  
 Delta R.T.: -0.002 min  
 Response: 21149591  
 Conc: 46.08 ng/ml



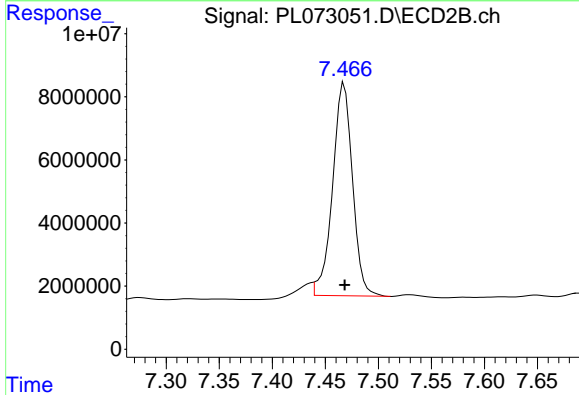
#4 Heptachlor  
 R.T.: 7.100 min  
 Delta R.T.: 0.000 min  
 Response: 89719489  
 Conc: 44.88 ng/ml



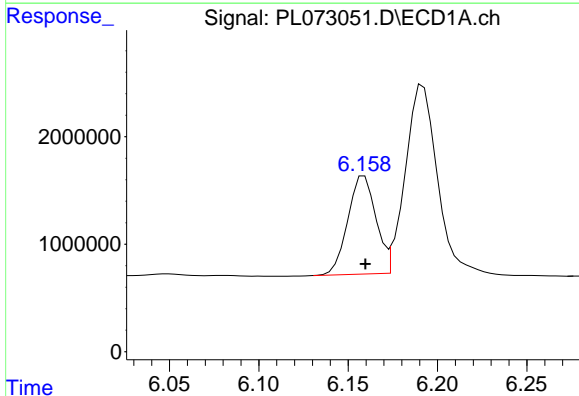
#5 Aldrin  
 R.T.: 6.518 min  
 Delta R.T.: 0.000 min  
 Response: 20042381  
 Conc: 45.19 ng/ml

Instrument : ECD\_L  
 ClientSampleId : RO-VNJ-221MSD

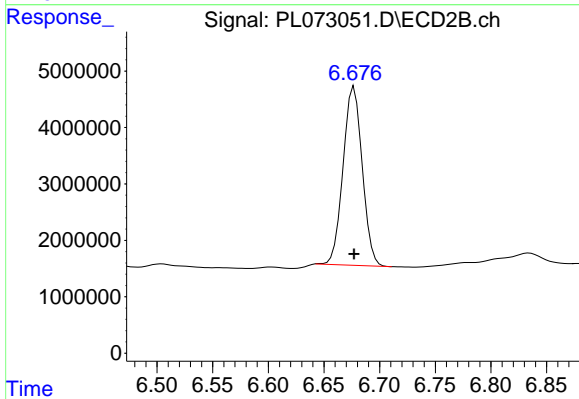
**Manual Integrations**  
**APPROVED**  
 Reviewed By :Abdul Mirza 03/01/2022  
 Supervised By :Ankita Jodhani 03/01/2022



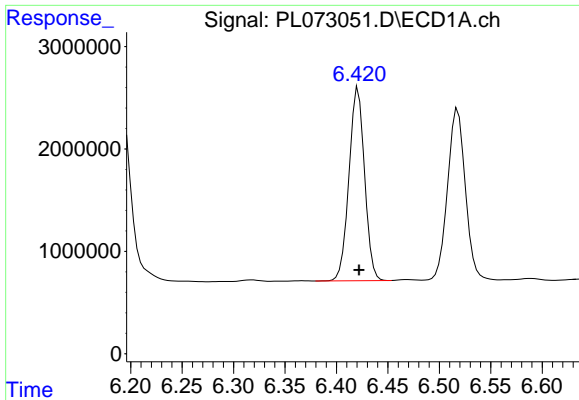
#5 Aldrin  
 R.T.: 7.466 min  
 Delta R.T.: -0.002 min  
 Response: 87861244  
 Conc: 48.01 ng/ml m



#6 beta-BHC  
 R.T.: 6.159 min  
 Delta R.T.: 0.000 min  
 Response: 10009906  
 Conc: 44.95 ng/ml



#6 beta-BHC  
 R.T.: 6.677 min  
 Delta R.T.: 0.000 min  
 Response: 37856667  
 Conc: 41.98 ng/ml



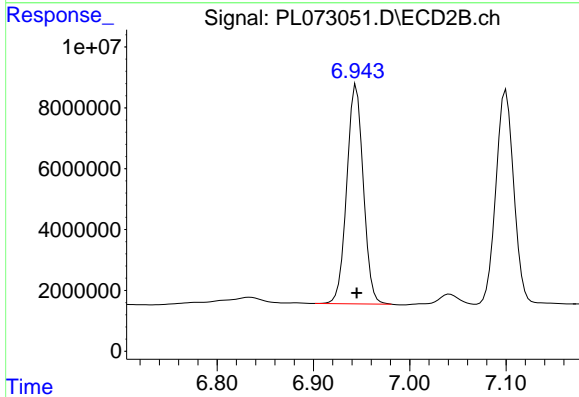
#7 delta-BHC

R.T.: 6.421 min  
 Delta R.T.: 0.000 min  
 Response: 19903063  
 Conc: 45.58 ng/ml

Instrument : ECD\_L  
 ClientSampleId : RO-VNJ-221MSD

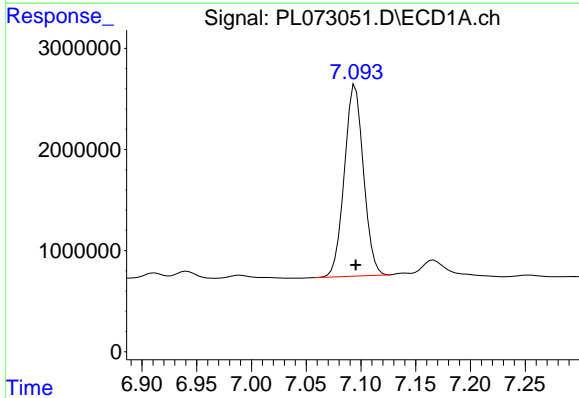
Manual Integrations  
 APPROVED

Reviewed By :Abdul Mirza 03/01/2022  
 Supervised By :Ankita Jodhani 03/01/2022



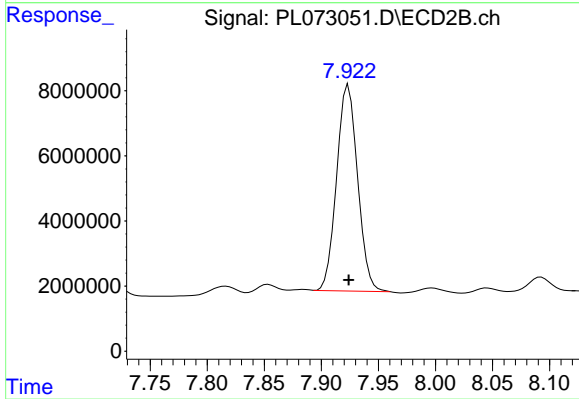
#7 delta-BHC

R.T.: 6.944 min  
 Delta R.T.: 0.000 min  
 Response: 85617046  
 Conc: 45.24 ng/ml



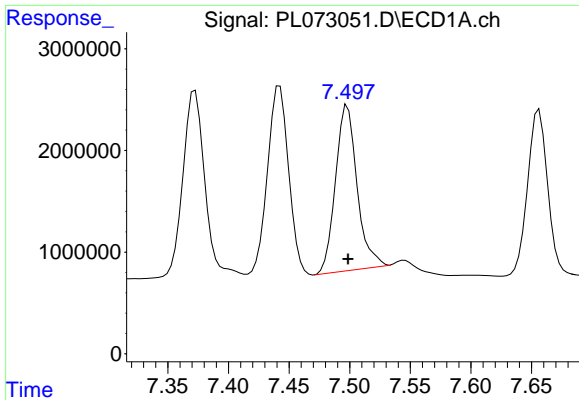
#8 Heptachlor epoxide

R.T.: 7.095 min  
 Delta R.T.: 0.000 min  
 Response: 22985885  
 Conc: 49.34 ng/ml



#8 Heptachlor epoxide

R.T.: 7.922 min  
 Delta R.T.: -0.002 min  
 Response: 81067647  
 Conc: 46.06 ng/ml m



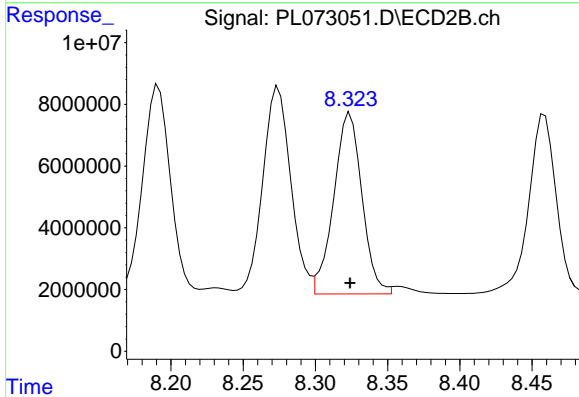
#9 Endosulfan I

R.T.: 7.498 min  
 Delta R.T.: 0.000 min  
 Response: 20148726  
 Conc: 45.43 ng/ml

Instrument :  
 ECD\_L  
 ClientSampleId :  
 RO-VNJ-221MSD

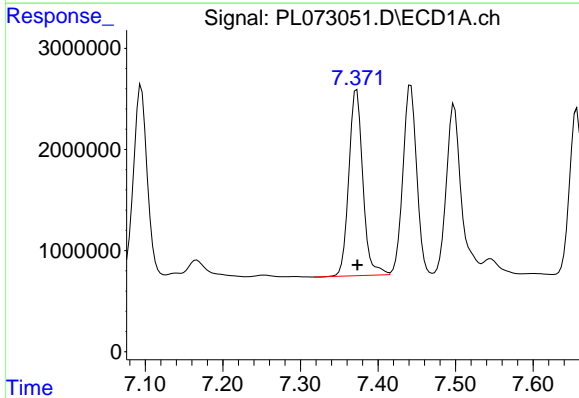
Manual Integrations  
 APPROVED

Reviewed By :Abdul Mirza 03/01/2022  
 Supervised By :Ankita Jodhani 03/01/2022



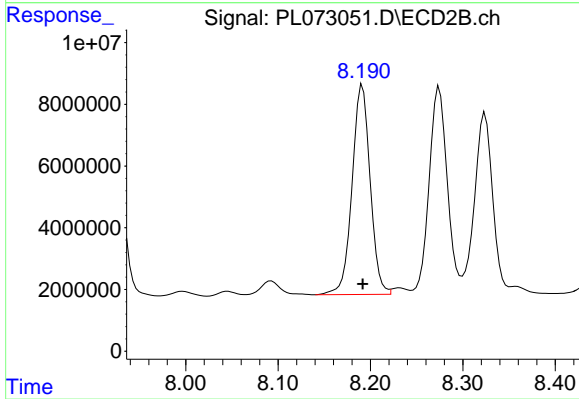
#9 Endosulfan I

R.T.: 8.324 min  
 Delta R.T.: 0.000 min  
 Response: 79743590  
 Conc: 49.23 ng/ml



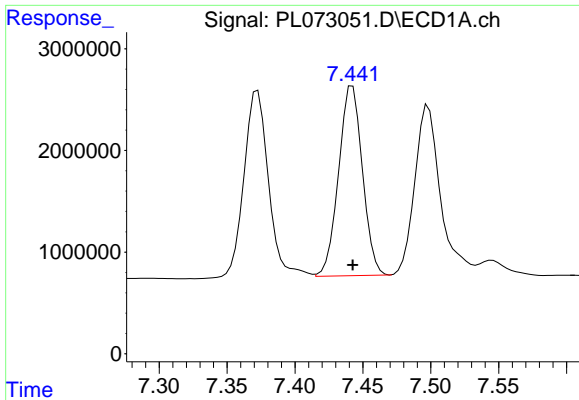
#10 gamma-Chlordane

R.T.: 7.373 min  
 Delta R.T.: 0.000 min  
 Response: 23112862  
 Conc: 48.67 ng/ml



#10 gamma-Chlordane

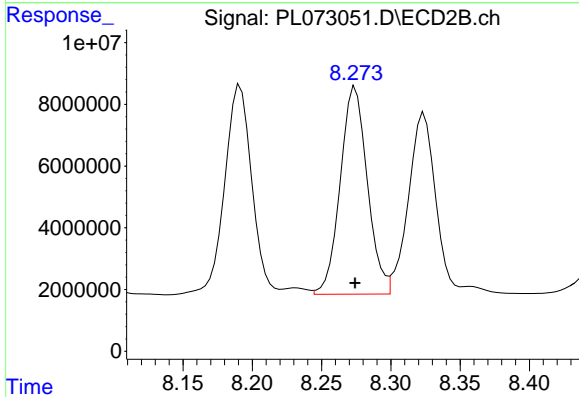
R.T.: 8.191 min  
 Delta R.T.: 0.000 min  
 Response: 92537665  
 Conc: 51.82 ng/ml



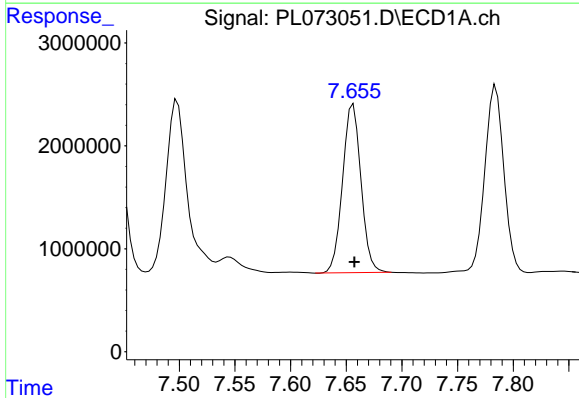
#11 alpha-Chlordane  
 R.T.: 7.442 min  
 Delta R.T.: 0.000 min  
 Response: 22791520  
 Conc: 47.62 ng/ml

Instrument : ECD\_L  
 ClientSampleId : RO-VNJ-221MSD

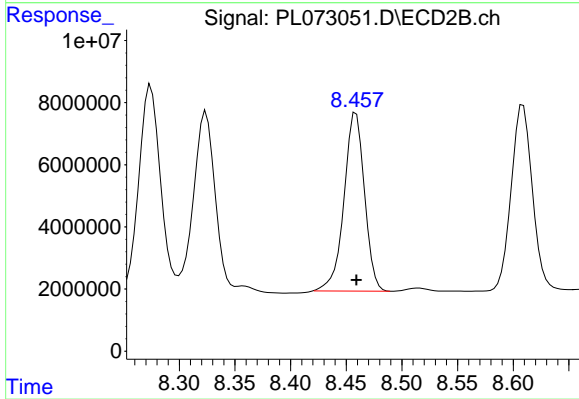
Manual Integrations  
**APPROVED**  
 Reviewed By :Abdul Mirza 03/01/2022  
 Supervised By :Ankita Jodhani 03/01/2022



#11 alpha-Chlordane  
 R.T.: 8.274 min  
 Delta R.T.: 0.000 min  
 Response: 91555168  
 Conc: 52.00 ng/ml

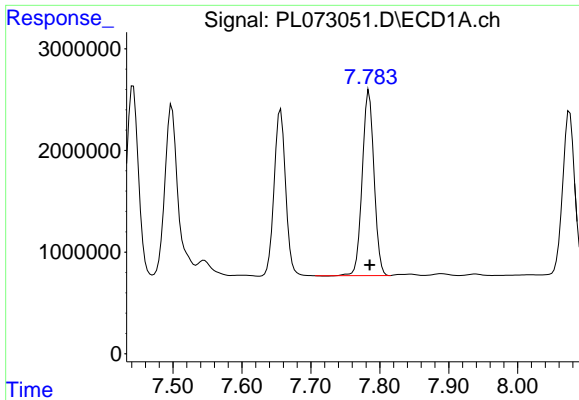


#12 4,4'-DDE  
 R.T.: 7.656 min  
 Delta R.T.: -0.001 min  
 Response: 18853540  
 Conc: 48.51 ng/ml



#12 4,4'-DDE  
 R.T.: 8.459 min  
 Delta R.T.: 0.000 min  
 Response: 73699180  
 Conc: 47.14 ng/ml





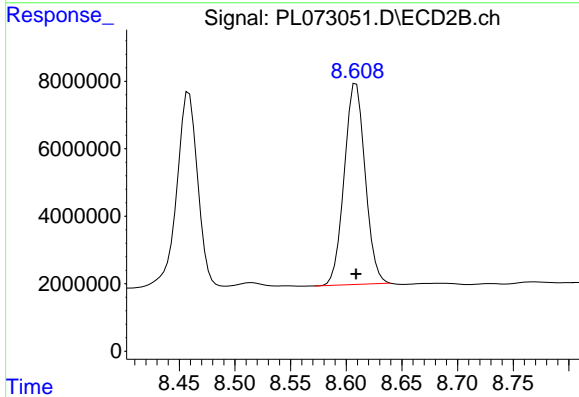
#13 Dieldrin

R.T.: 7.784 min  
 Delta R.T.: -0.001 min  
 Response: 21619015  
 Conc: 48.24 ng/ml

Instrument :  
 ECD\_L  
 ClientSampleId :  
 RO-VNJ-221MSD

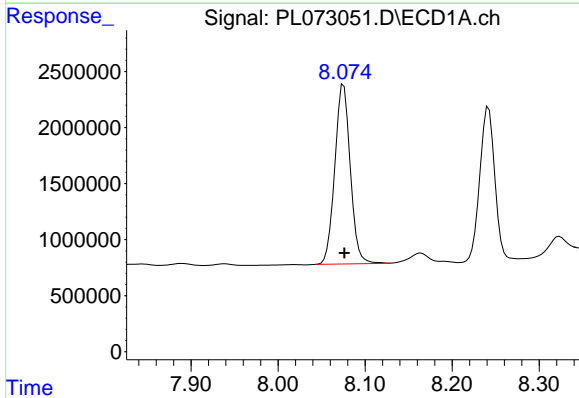
Manual Integrations  
 APPROVED

Reviewed By :Abdul Mirza 03/01/2022  
 Supervised By :Ankita Jodhani 03/01/2022



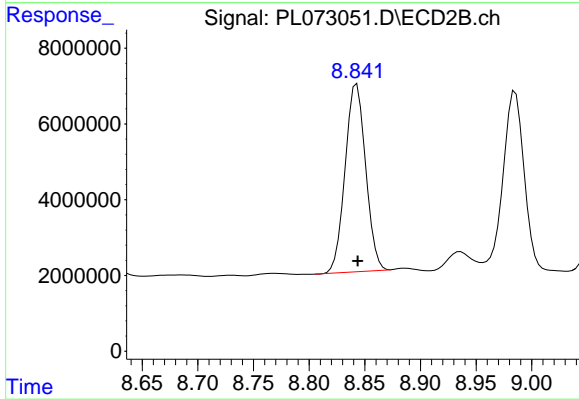
#13 Dieldrin

R.T.: 8.609 min  
 Delta R.T.: 0.000 min  
 Response: 77910186  
 Conc: 48.24 ng/ml



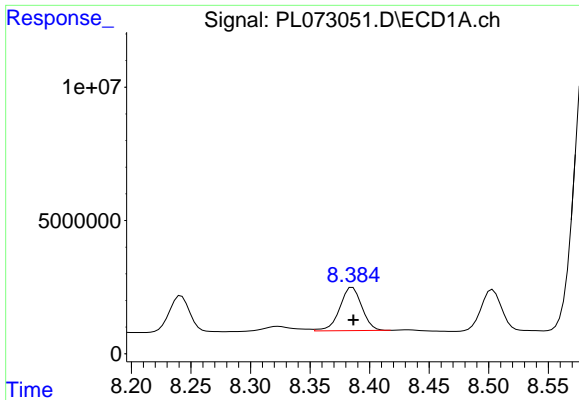
#14 Endrin

R.T.: 8.075 min  
 Delta R.T.: 0.000 min  
 Response: 19872125  
 Conc: 50.05 ng/ml



#14 Endrin

R.T.: 8.843 min  
 Delta R.T.: 0.000 min  
 Response: 63839549  
 Conc: 48.23 ng/ml



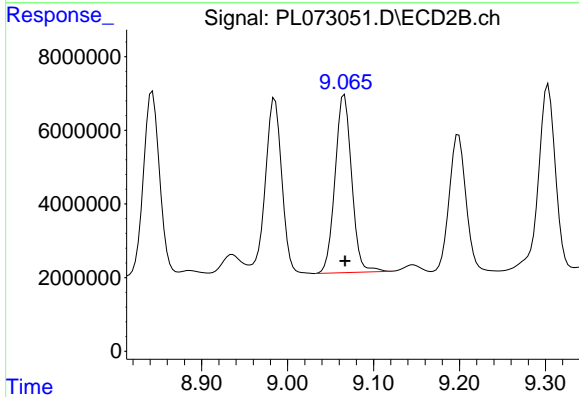
#15 Endosulfan II

R.T.: 8.386 min  
 Delta R.T.: 0.000 min  
 Response: 21009342  
 Conc: 48.44 ng/ml

Instrument :  
 ECD\_L  
 ClientSampleId :  
 RO-VNJ-221MSD

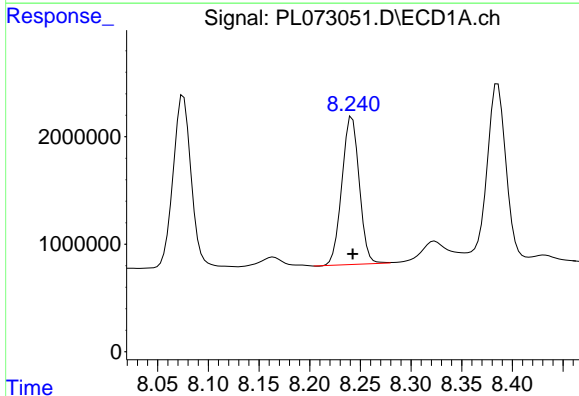
Manual Integrations  
 APPROVED

Reviewed By :Abdul Mirza 03/01/2022  
 Supervised By :Ankita Jodhani 03/01/2022



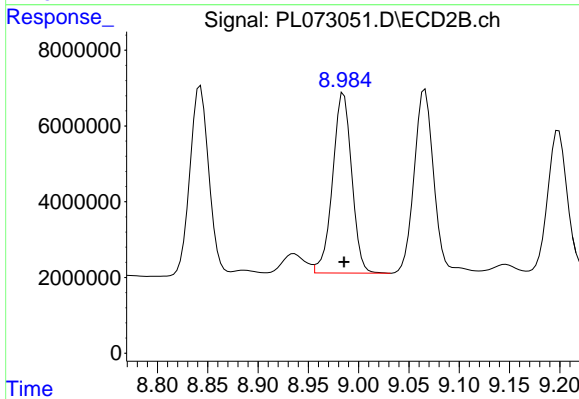
#15 Endosulfan II

R.T.: 9.066 min  
 Delta R.T.: 0.000 min  
 Response: 64728879  
 Conc: 46.77 ng/ml



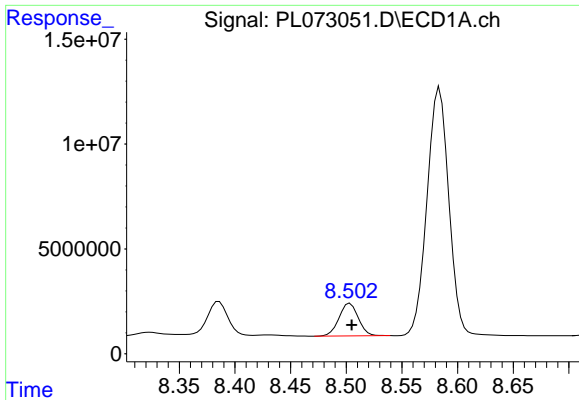
#16 4,4'-DDD

R.T.: 8.242 min  
 Delta R.T.: 0.000 min  
 Response: 16328861  
 Conc: 46.88 ng/ml



#16 4,4'-DDD

R.T.: 8.985 min  
 Delta R.T.: 0.000 min  
 Response: 62870893  
 Conc: 47.28 ng/ml



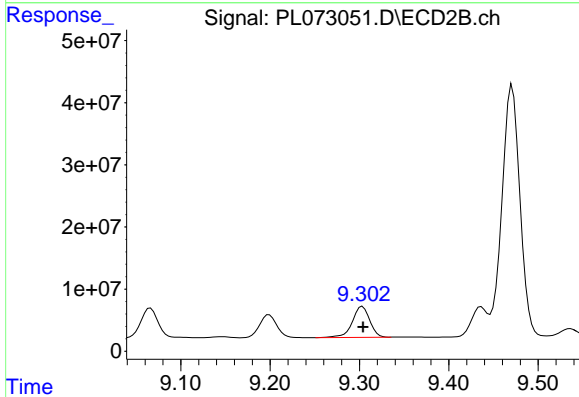
#17 4,4'-DDT

R.T.: 8.503 min  
 Delta R.T.: -0.001 min  
 Response: 18744668  
 Conc: 49.26 ng/ml

Instrument : ECD\_L  
 ClientSampleId : RO-VNJ-221MSD

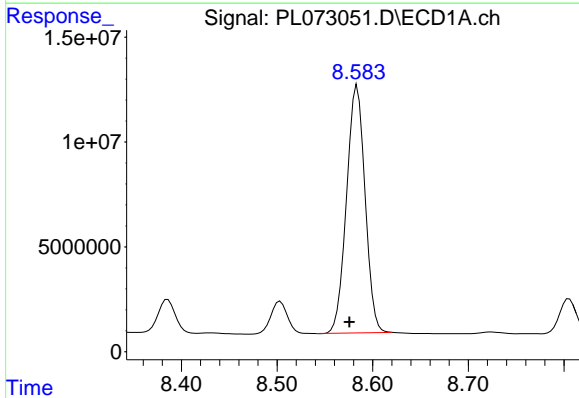
Manual Integrations  
 APPROVED

Reviewed By :Abdul Mirza 03/01/2022  
 Supervised By :Ankita Jodhani 03/01/2022



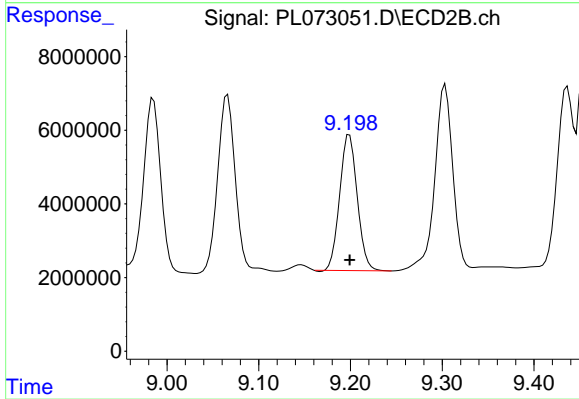
#17 4,4'-DDT

R.T.: 9.303 min  
 Delta R.T.: 0.000 min  
 Response: 67275895  
 Conc: 49.05 ng/ml



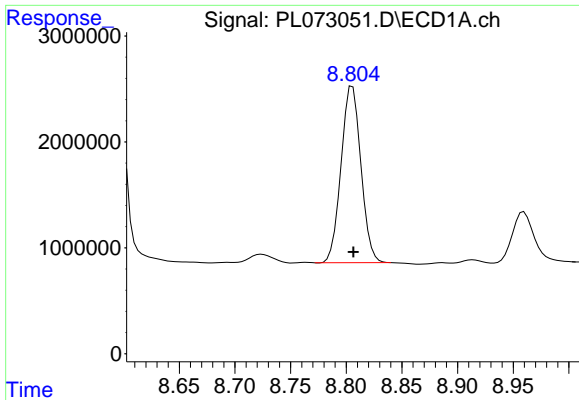
#18 Endrin aldehyde

R.T.: 8.584 min  
 Delta R.T.: 0.008 min  
 Response: 159529381  
 Conc: 496.92 ng/ml



#18 Endrin aldehyde

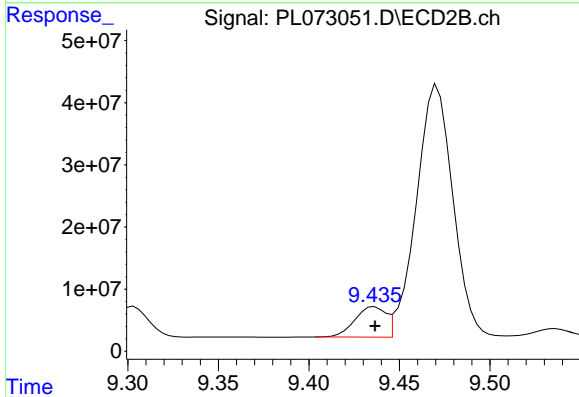
R.T.: 9.199 min  
 Delta R.T.: 0.000 min  
 Response: 49009996  
 Conc: 45.04 ng/ml



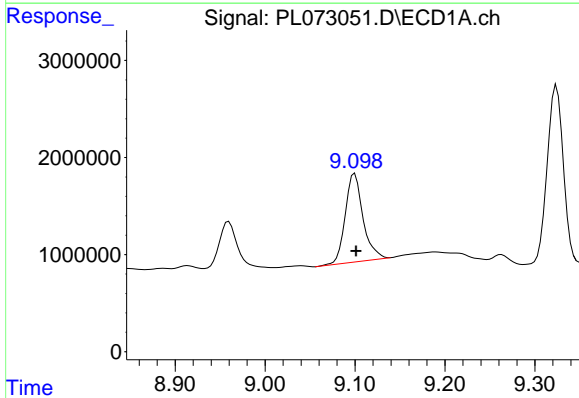
#19 Endosulfan Sulfate  
 R.T.: 8.806 min  
 Delta R.T.: 0.000 min  
 Response: 20684785  
 Conc: 47.06 ng/ml

Instrument : ECD\_L  
 Client Sample Id : RO-VNJ-221MSD

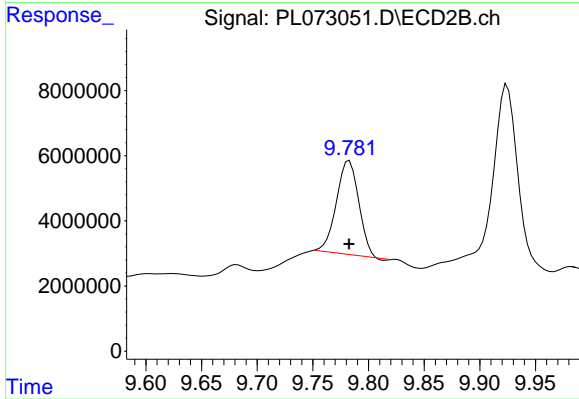
**Manual Integrations**  
**APPROVED**  
 Reviewed By :Abdul Mirza 03/01/2022  
 Supervised By :Ankita Jodhani 03/01/2022



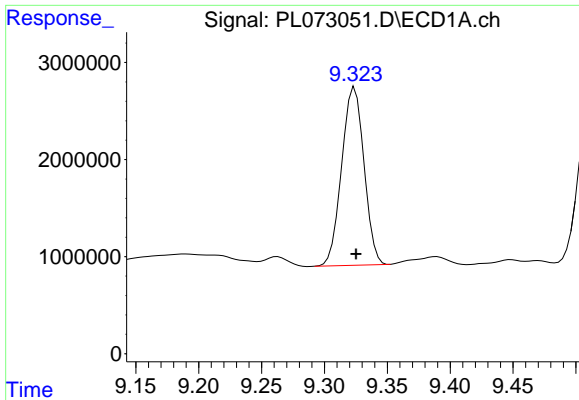
#19 Endosulfan Sulfate  
 R.T.: 9.435 min  
 Delta R.T.: -0.002 min  
 Response: 68590510  
 Conc: 48.38 ng/ml m



#20 Methoxychlor  
 R.T.: 9.100 min  
 Delta R.T.: -0.001 min  
 Response: 12477860  
 Conc: 49.96 ng/ml



#20 Methoxychlor  
 R.T.: 9.783 min  
 Delta R.T.: 0.000 min  
 Response: 39664753  
 Conc: 50.66 ng/ml



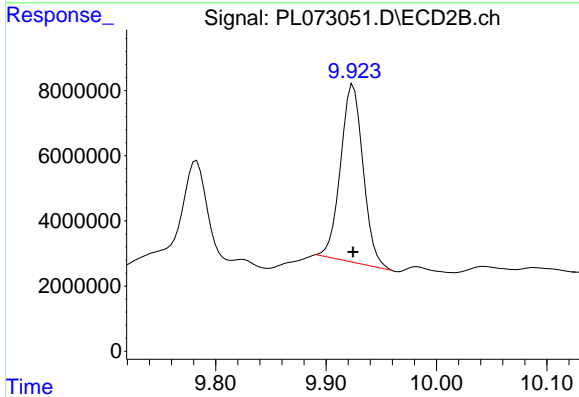
#21 Endrin ketone

R.T.: 9.324 min  
 Delta R.T.: -0.001 min  
 Response: 22697963  
 Conc: 45.78 ng/ml

Instrument :  
 ECD\_L  
 ClientSampleId :  
 RO-VNJ-221MSD

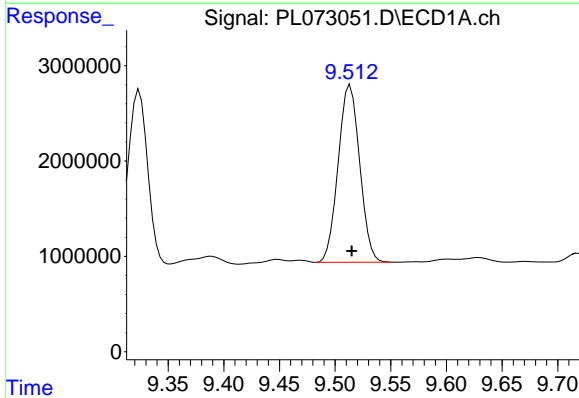
Manual Integrations  
 APPROVED

Reviewed By :Abdul Mirza 03/01/2022  
 Supervised By :Ankita Jodhani 03/01/2022



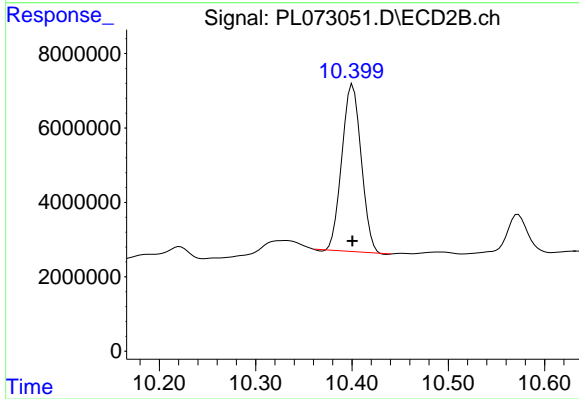
#21 Endrin ketone

R.T.: 9.923 min  
 Delta R.T.: -0.001 min  
 Response: 77436852  
 Conc: 52.81 ng/ml m



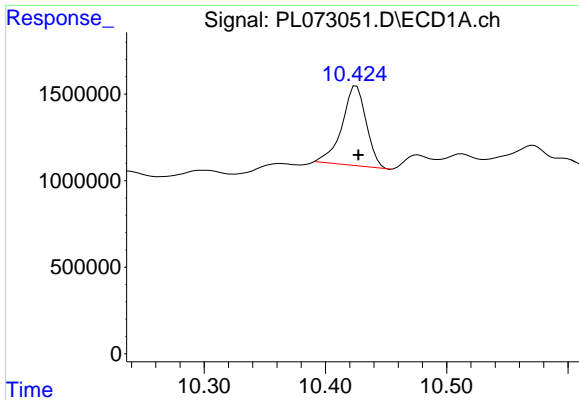
#22 Mirex

R.T.: 9.514 min  
 Delta R.T.: -0.001 min  
 Response: 24976310  
 Conc: 44.27 ng/ml



#22 Mirex

R.T.: 10.401 min  
 Delta R.T.: 0.000 min  
 Response: 62154650  
 Conc: 42.32 ng/ml



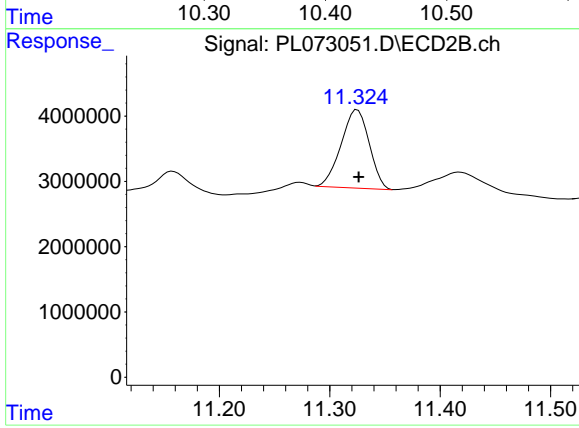
#28 Decachlorobiphenyl

R.T.: 10.426 min  
 Delta R.T.: -0.001 min  
 Response: 6386277  
 Conc: 13.64 ng/ml

Instrument :  
 ECD\_L  
 ClientSampleId :  
 RO-VNJ-221MSD

Manual Integrations  
 APPROVED

Reviewed By :Abdul Mirza 03/01/2022  
 Supervised By :Ankita Jodhani 03/01/2022



#28 Decachlorobiphenyl

R.T.: 11.324 min  
 Delta R.T.: -0.002 min  
 Response: 21295587  
 Conc: 13.50 ng/ml m