

Data Path : Z:\pestpcbsrv\HPCHEM1\ECD_L\Data\PL022823\
 Data File : PL081160.D
 Signal(s) : Signal #1: ECD1A.ch Signal #2: ECD2B.ch
 Acq On : 28 Feb 2023 17:13
 Operator : AR\AJ
 Sample : PB151055BS
 Misc :
 ALS Vial : 27 Sample Multiplier: 1

Instrument :
 ECD_L
 ClientSampleId :

Integration File signal 1: autoint1.e
 Integration File signal 2: autoint2.e
 Quant Time: Feb 28 21:55:54 2023
 Quant Method : Z:\pestpcbsrv\HPCHEM1\ECD_L\methods\PL022823.M
 Quant Title : GC Extractables
 QLast Update : Tue Feb 28 15:14:21 2023
 Response via : Initial Calibration
 Integrator: ChemStation

Volume Inj. : 1 µl
 Signal #1 Phase : ZB-MR2 Signal #2 Phase: ZB-MR1
 Signal #1 Info : 30M x 0.32mm x0.2 Signal #2 Info : 30M x 0.32mm x0.5µm

	Compound	RT#1	RT#2	Resp#1	Resp#2	ng/ml	ng/ml

System Monitoring Compounds							
1)	SA Tetrachlo...	3.339	2.669	42134011	44198994	29.526	25.702
28)	SA Decachlor...	8.769	7.796	27369401	36476928	28.581	32.756
Target Compounds							
2)	A alpha-BHC	3.790	3.171	137.9E6	148.9E6	68.579	62.333
3)	MA gamma-BHC...	4.119	3.499	129.3E6	139.4E6	71.264	63.090
4)	MA Heptachlor	4.699	3.833	113.1E6	128.4E6	69.577	63.451
5)	MB Aldrin	5.035	4.112	111.3E6	135.1E6	74.379	66.437
6)	B beta-BHC	4.321	3.798	54670188	53130429	66.099	59.747
7)	B delta-BHC	4.564	4.027	123.4E6	126.0E6	73.092	65.919
8)	Heptachlo...	5.463	4.615	98602664	122.2E6	71.063	68.598
9)	A Endosulfan I	5.844	4.982	86379057	106.9E6	71.223	68.055
10)	B gamma-Chl...	5.717	4.863	95077275	118.4E6	72.087	67.308
11)	B alpha-Chl...	5.795	4.927	92974103	117.7E6	73.157	68.574
12)	B 4,4'-DDE	5.973	5.118	80235283	94747427	69.534	69.086
13)	MA Dieldrin	6.119	5.247	87297119	115.9E6	69.311	72.302
14)	MA Endrin	6.346	5.522	74030523	97879007	66.466	73.032
15)	B Endosulfa...	6.568	5.818	75363803	91588874	66.036	79.263
16)	A 4,4'-DDD	6.489	5.673	62919760	76243500	65.726	70.322
17)	MA 4,4'-DDT	6.800	5.922	57517514	70084142	64.271	72.920
18)	B Endrin al...	6.699	6.000	58991850	76561712	70.424	77.977
19)	B Endosulfa...	6.933	6.222	70393158	90543914	68.129	73.207
20)	A Methoxychlor	7.281	6.503	31487981	39536768	67.790	78.718
21)	B Endrin ke...	7.412	6.728	68888423	97106281	60.026	72.783
22)	Mirex	7.876	6.899	55987576	85029595	64.851	75.575
23)	Chlordane-1	0.000	3.662	0	76604	N.D.	1.099 #
24)	Chlordane-2	5.035f	4.250	111.3E6	95330	1756.409	1.167 #
25)	Chlordane-3	5.717	4.863	95077275	118.4E6	427.307	562.030 #
26)	Chlordane-4	5.795	4.927	92974103	117.7E6	348.799	535.932 #
27)	Chlordane-5	6.628f	0.000	845468	0	18.904	N.D. #

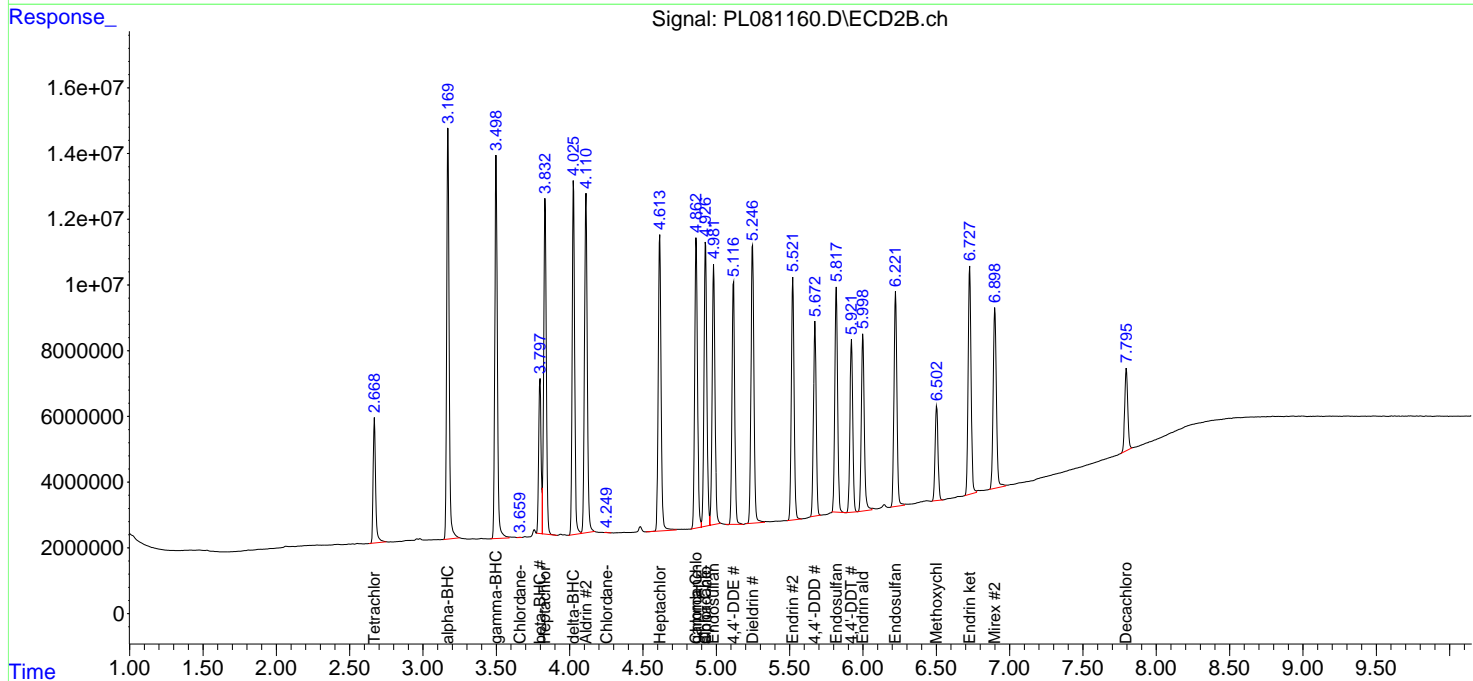
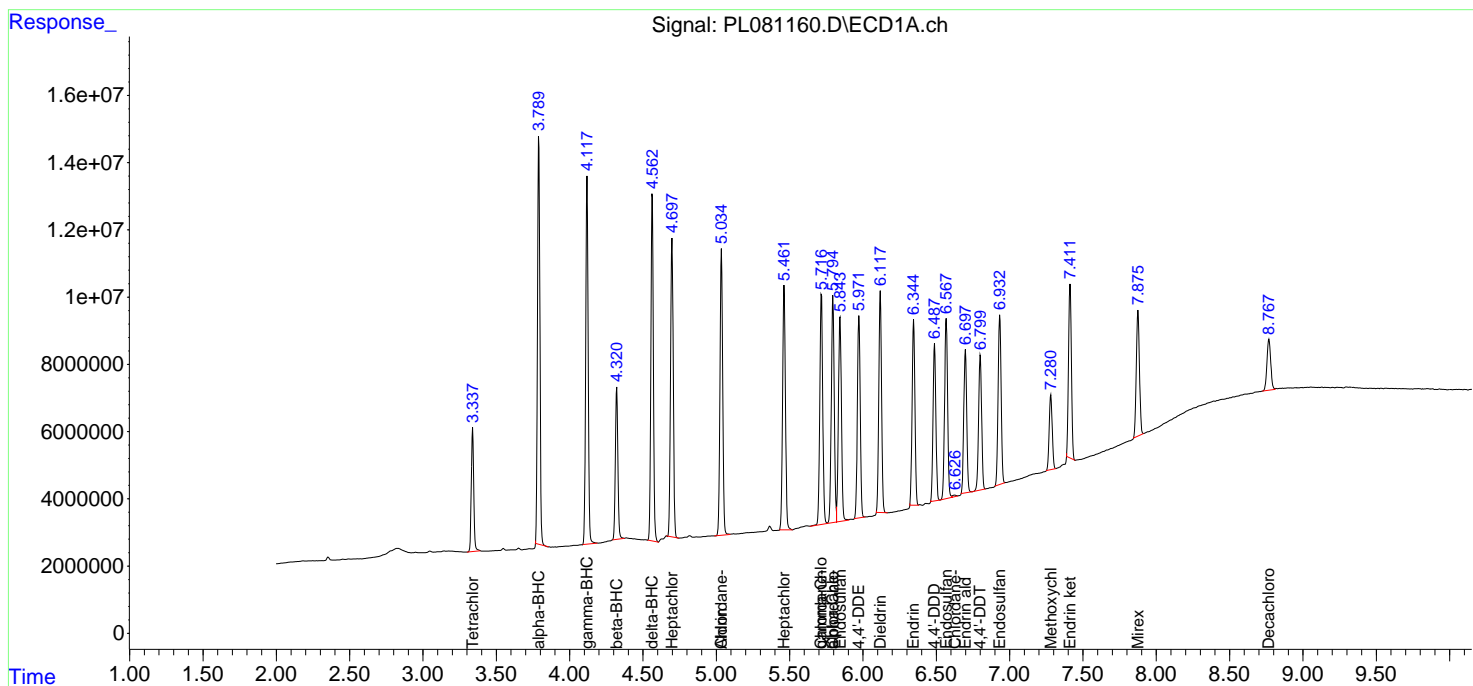
(f)=RT Delta > 1/2 Window (#)=Amounts differ by > 25% (m)=manual int.

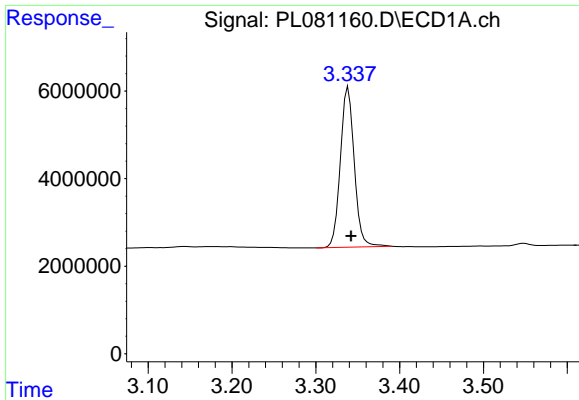
Data Path : Z:\pestpcbsrv\HPCHEM1\ECD_L\Data\PL022823\
 Data File : PL081160.D
 Signal(s) : Signal #1: ECD1A.ch Signal #2: ECD2B.ch
 Acq On : 28 Feb 2023 17:13
 Operator : AR\AJ
 Sample : PB151055BS
 Misc :
 ALS Vial : 27 Sample Multiplier: 1

Instrument :
 ECD_L
 ClientSampleId :

Integration File signal 1: autoint1.e
 Integration File signal 2: autoint2.e
 Quant Time: Feb 28 21:55:54 2023
 Quant Method : Z:\pestpcbsrv\HPCHEM1\ECD_L\methods\PL022823.M
 Quant Title : GC Extractables
 QLast Update : Tue Feb 28 15:14:21 2023
 Response via : Initial Calibration
 Integrator: ChemStation

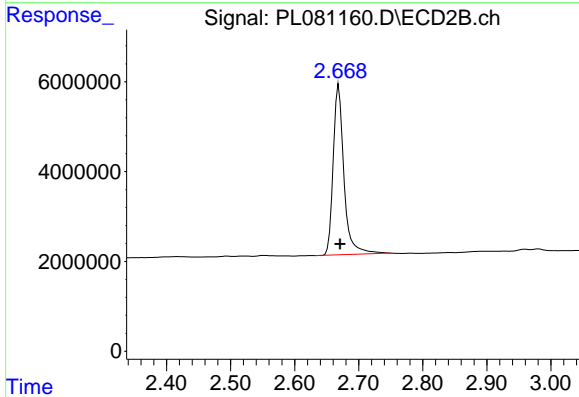
Volume Inj. : 1 µl
 Signal #1 Phase : ZB-MR2 Signal #2 Phase: ZB-MR1
 Signal #1 Info : 30M x 0.32mm x0.2 Signal #2 Info : 30M x 0.32mm x0.5µm



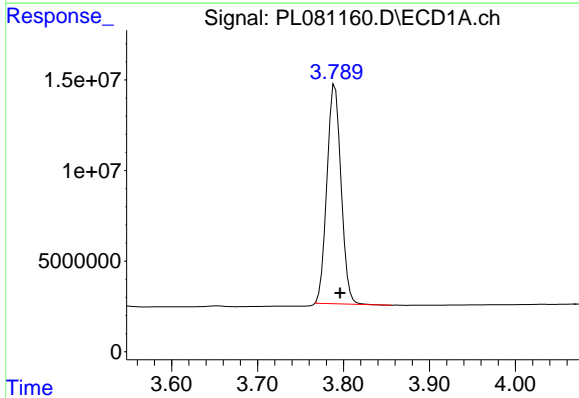


#1 Tetrachloro-m-xylene
 R.T.: 3.339 min
 Delta R.T.: -0.003 min
 Response: 42134011
 Conc: 29.53 ng/ml

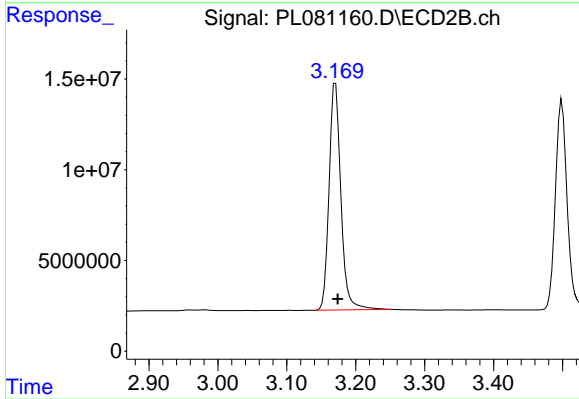
Instrument :
 ECD_L
 ClientSampleId :



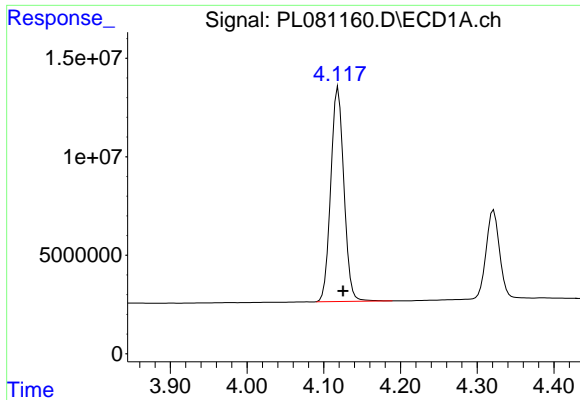
#1 Tetrachloro-m-xylene
 R.T.: 2.669 min
 Delta R.T.: -0.002 min
 Response: 44198994
 Conc: 25.70 ng/ml



#2 alpha-BHC
 R.T.: 3.790 min
 Delta R.T.: -0.006 min
 Response: 137942447
 Conc: 68.58 ng/ml

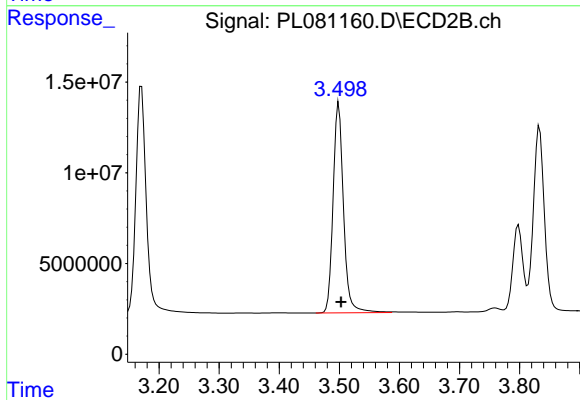


#2 alpha-BHC
 R.T.: 3.171 min
 Delta R.T.: -0.003 min
 Response: 148908576
 Conc: 62.33 ng/ml

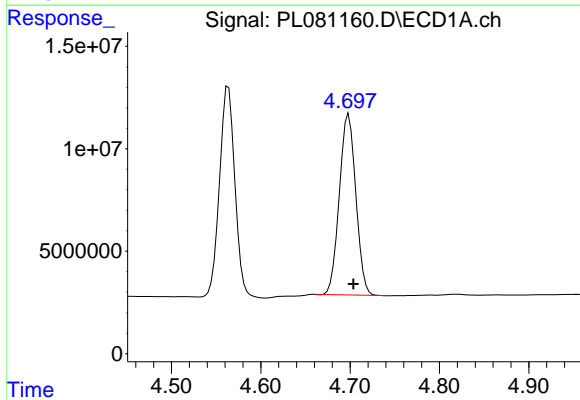


#3 gamma-BHC (Lindane)
 R.T.: 4.119 min
 Delta R.T.: -0.007 min
 Response: 129311236
 Conc: 71.26 ng/ml

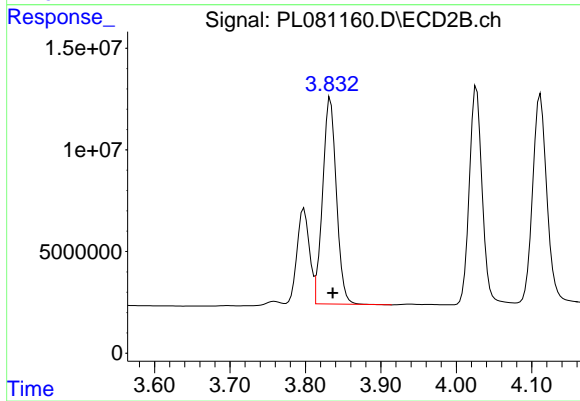
Instrument :
 ECD_L
 ClientSampleId :



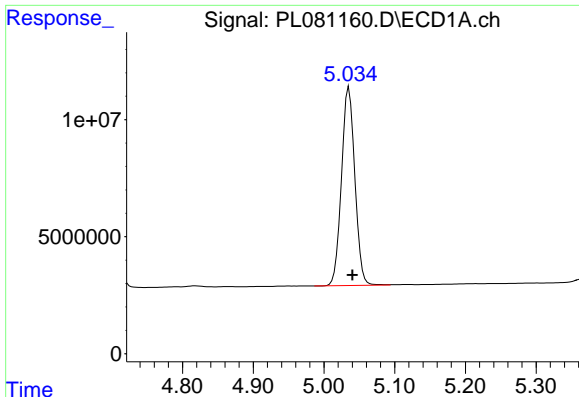
#3 gamma-BHC (Lindane)
 R.T.: 3.499 min
 Delta R.T.: -0.003 min
 Response: 139416494
 Conc: 63.09 ng/ml



#4 Heptachlor
 R.T.: 4.699 min
 Delta R.T.: -0.005 min
 Response: 113077170
 Conc: 69.58 ng/ml



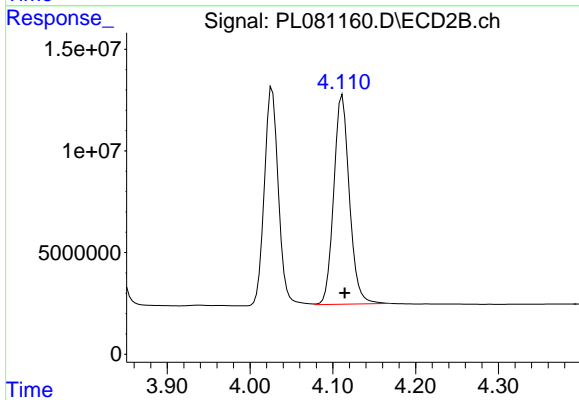
#4 Heptachlor
 R.T.: 3.833 min
 Delta R.T.: -0.003 min
 Response: 128373917
 Conc: 63.45 ng/ml



#5 Aldrin

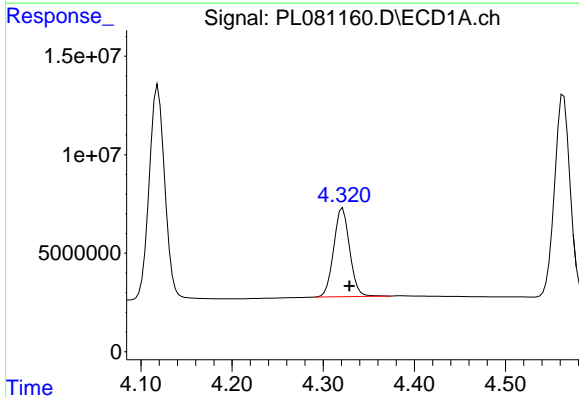
R.T.: 5.035 min
 Delta R.T.: -0.005 min
 Response: 111312074
 Conc: 74.38 ng/ml

Instrument :
 ECD_L
 ClientSampleId :



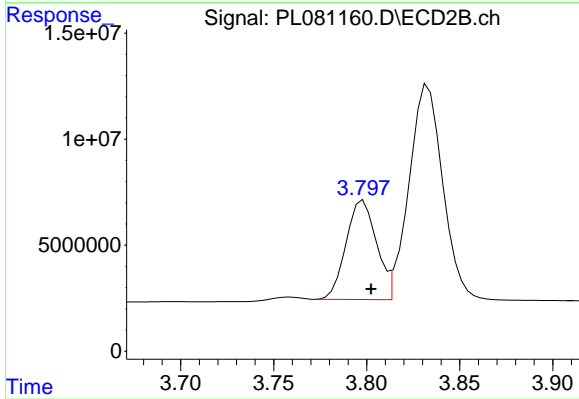
#5 Aldrin

R.T.: 4.112 min
 Delta R.T.: -0.003 min
 Response: 135100454
 Conc: 66.44 ng/ml



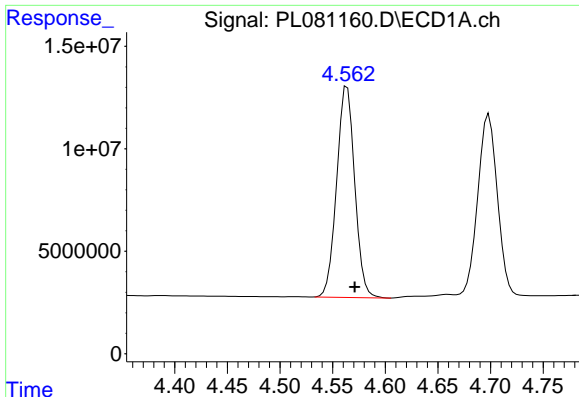
#6 beta-BHC

R.T.: 4.321 min
 Delta R.T.: -0.007 min
 Response: 54670188
 Conc: 66.10 ng/ml



#6 beta-BHC

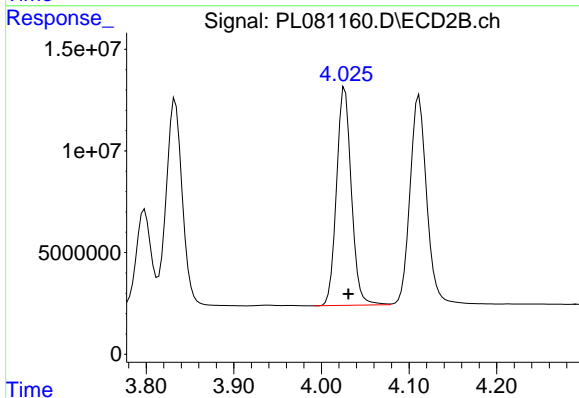
R.T.: 3.798 min
 Delta R.T.: -0.004 min
 Response: 53130429
 Conc: 59.75 ng/ml



#7 delta-BHC

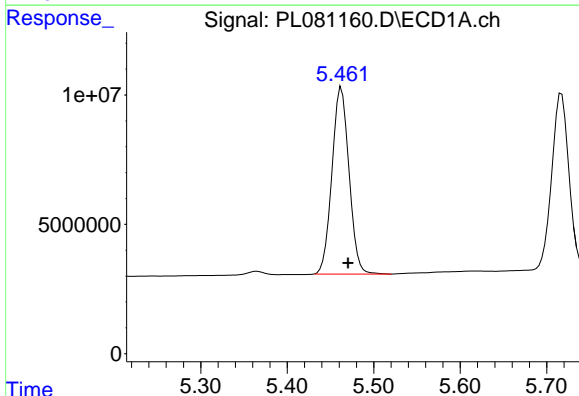
R.T.: 4.564 min
 Delta R.T.: -0.007 min
 Response: 123382014
 Conc: 73.09 ng/ml

Instrument :
 ECD_L
 ClientSampleId :



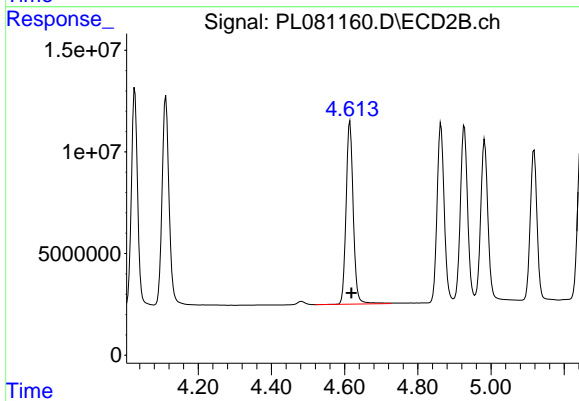
#7 delta-BHC

R.T.: 4.027 min
 Delta R.T.: -0.004 min
 Response: 126046598
 Conc: 65.92 ng/ml



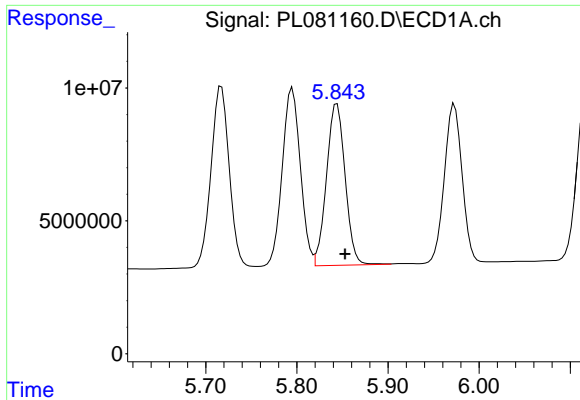
#8 Heptachlor epoxide

R.T.: 5.463 min
 Delta R.T.: -0.008 min
 Response: 98602664
 Conc: 71.06 ng/ml



#8 Heptachlor epoxide

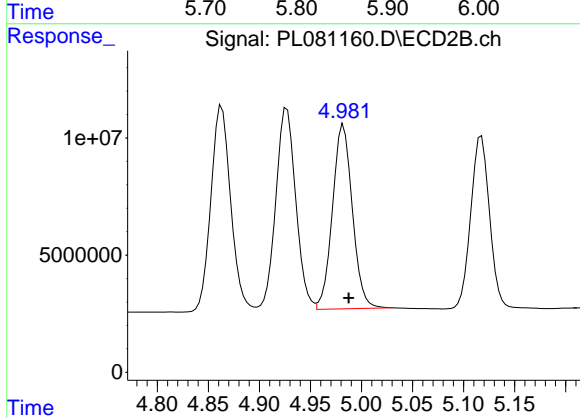
R.T.: 4.615 min
 Delta R.T.: -0.004 min
 Response: 122156274
 Conc: 68.60 ng/ml



#9 Endosulfan I

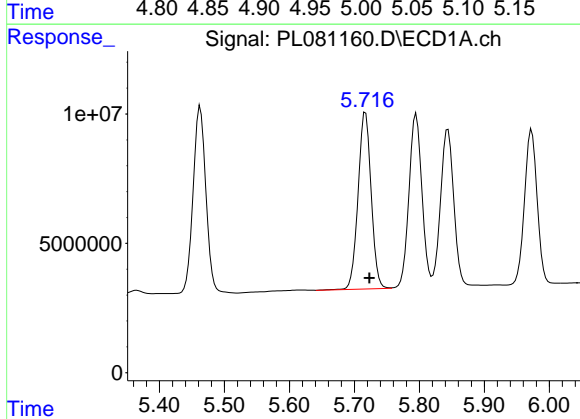
R.T.: 5.844 min
 Delta R.T.: -0.009 min
 Response: 86379057
 Conc: 71.22 ng/ml

Instrument :
 ECD_L
 ClientSampleId :



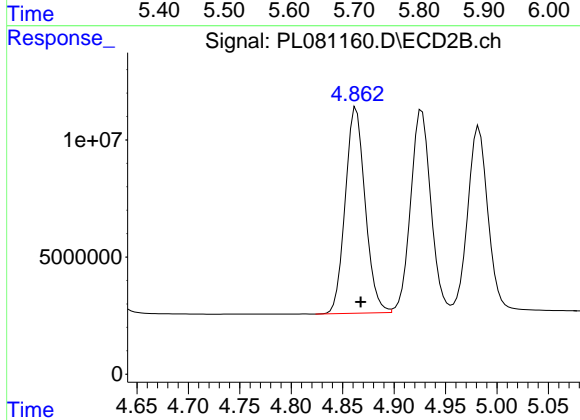
#9 Endosulfan I

R.T.: 4.982 min
 Delta R.T.: -0.005 min
 Response: 106874508
 Conc: 68.05 ng/ml



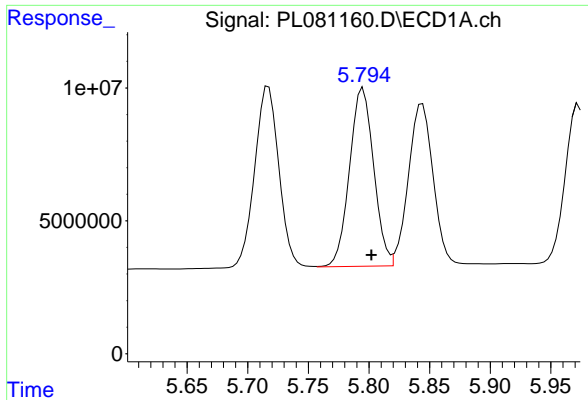
#10 gamma-Chlordane

R.T.: 5.717 min
 Delta R.T.: -0.006 min
 Response: 95077275
 Conc: 72.09 ng/ml



#10 gamma-Chlordane

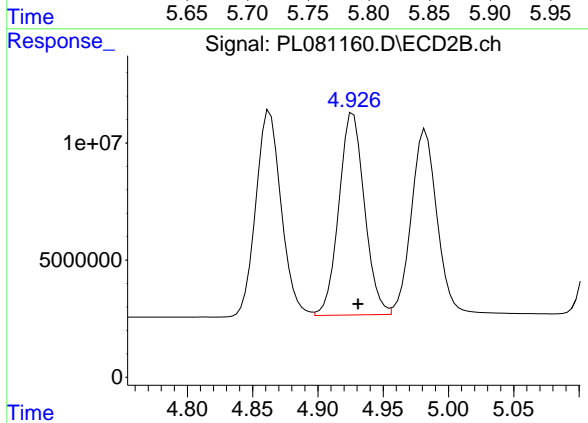
R.T.: 4.863 min
 Delta R.T.: -0.004 min
 Response: 118367606
 Conc: 67.31 ng/ml



#11 alpha-Chlordane

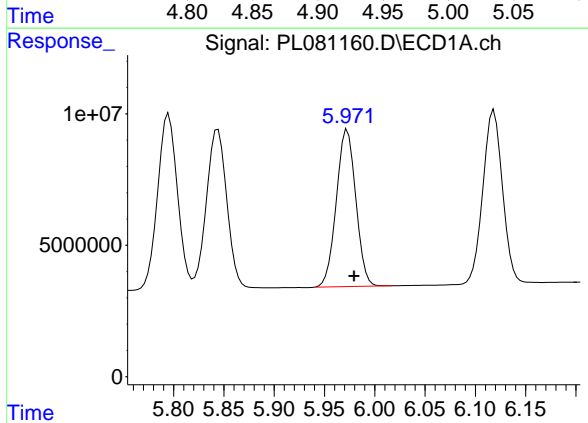
R.T.: 5.795 min
 Delta R.T.: -0.007 min
 Response: 92974103
 Conc: 73.16 ng/ml

Instrument :
 ECD_L
 ClientSampleId :



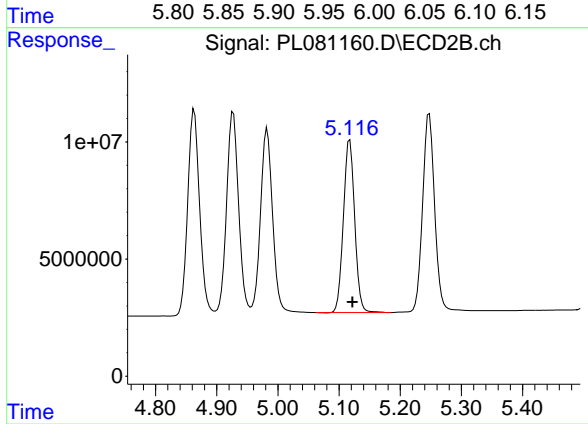
#11 alpha-Chlordane

R.T.: 4.927 min
 Delta R.T.: -0.004 min
 Response: 117721978
 Conc: 68.57 ng/ml



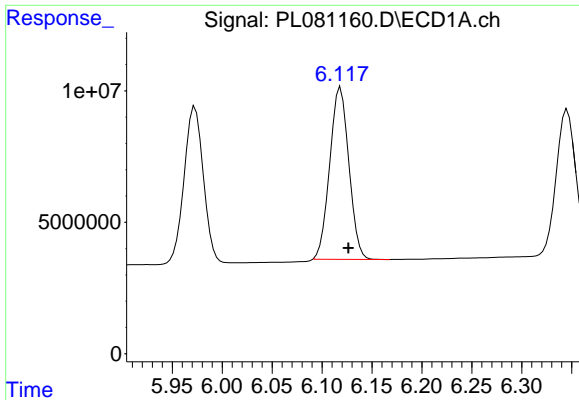
#12 4,4'-DDE

R.T.: 5.973 min
 Delta R.T.: -0.007 min
 Response: 80235283
 Conc: 69.53 ng/ml



#12 4,4'-DDE

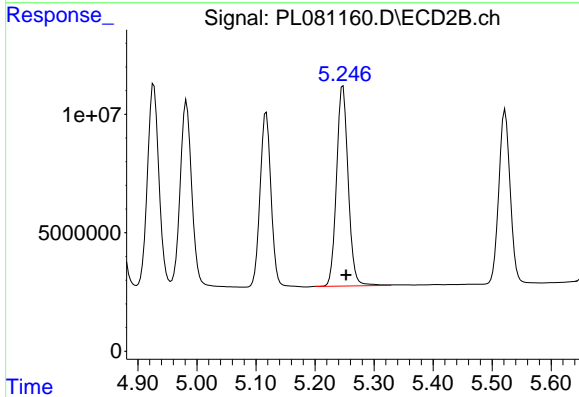
R.T.: 5.118 min
 Delta R.T.: -0.004 min
 Response: 94747427
 Conc: 69.09 ng/ml



#13 Dieldrin

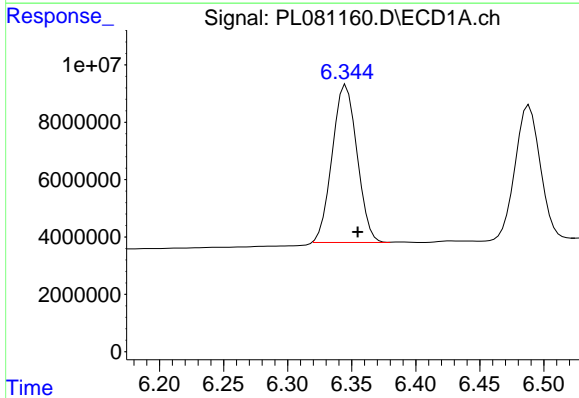
R.T.: 6.119 min
 Delta R.T.: -0.008 min
 Response: 87297119
 Conc: 69.31 ng/ml

Instrument :
 ECD_L
 ClientSampleId :



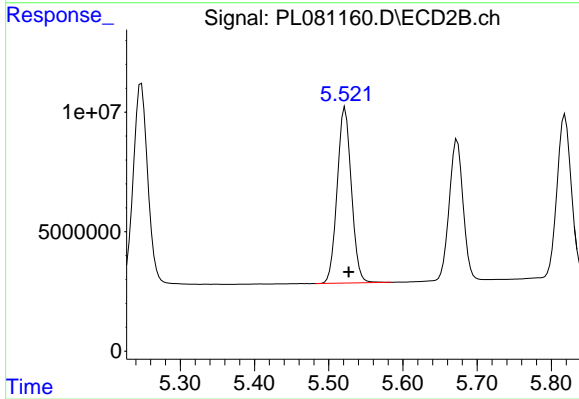
#13 Dieldrin

R.T.: 5.247 min
 Delta R.T.: -0.005 min
 Response: 115947366
 Conc: 72.30 ng/ml



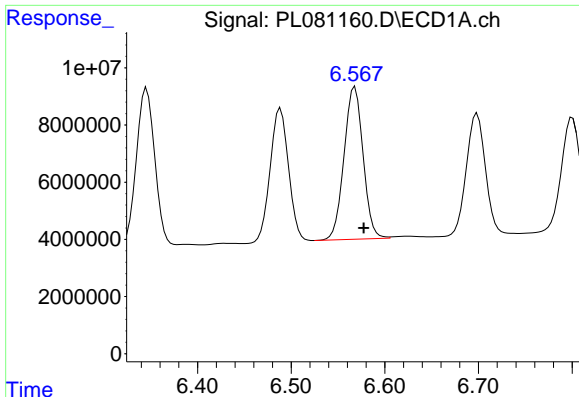
#14 Endrin

R.T.: 6.346 min
 Delta R.T.: -0.009 min
 Response: 74030523
 Conc: 66.47 ng/ml



#14 Endrin

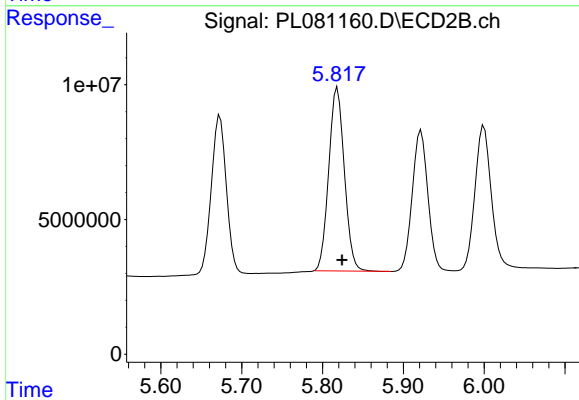
R.T.: 5.522 min
 Delta R.T.: -0.005 min
 Response: 97879007
 Conc: 73.03 ng/ml



#15 Endosulfan II

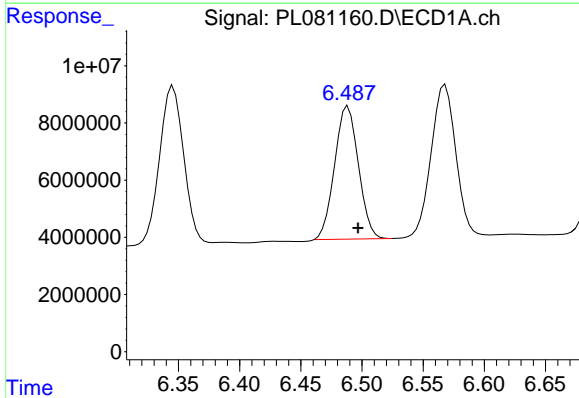
R.T.: 6.568 min
 Delta R.T.: -0.009 min
 Response: 75363803
 Conc: 66.04 ng/ml

Instrument :
 ECD_L
 ClientSampleId :



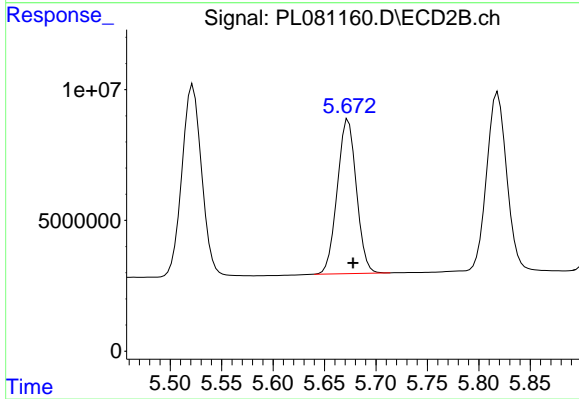
#15 Endosulfan II

R.T.: 5.818 min
 Delta R.T.: -0.006 min
 Response: 91588874
 Conc: 79.26 ng/ml



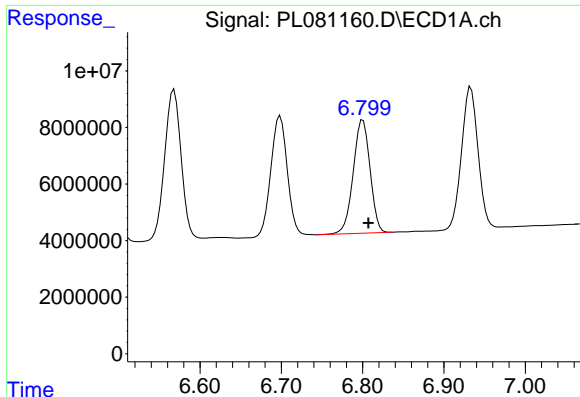
#16 4,4'-DDD

R.T.: 6.489 min
 Delta R.T.: -0.008 min
 Response: 62919760
 Conc: 65.73 ng/ml



#16 4,4'-DDD

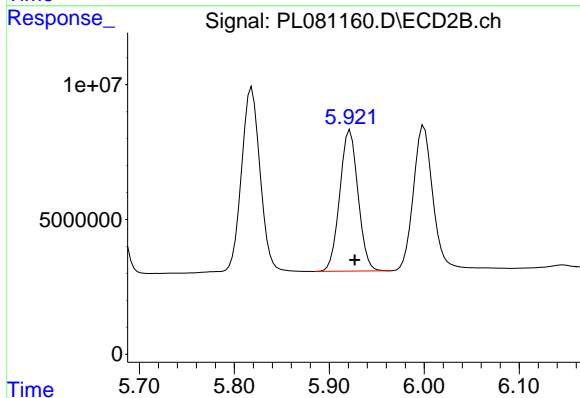
R.T.: 5.673 min
 Delta R.T.: -0.005 min
 Response: 76243500
 Conc: 70.32 ng/ml



#17 4,4'-DDT

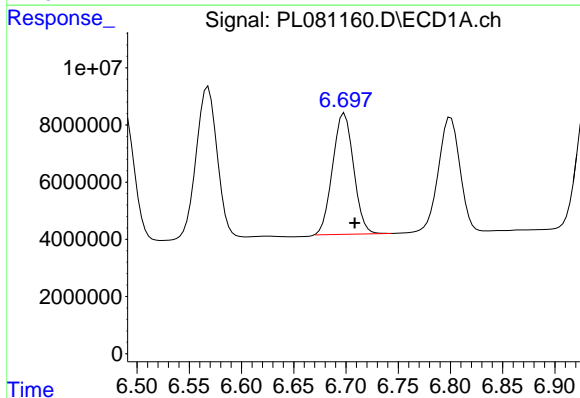
R.T.: 6.800 min
 Delta R.T.: -0.007 min
 Response: 57517514
 Conc: 64.27 ng/ml

Instrument :
 ECD_L
 ClientSampleId :



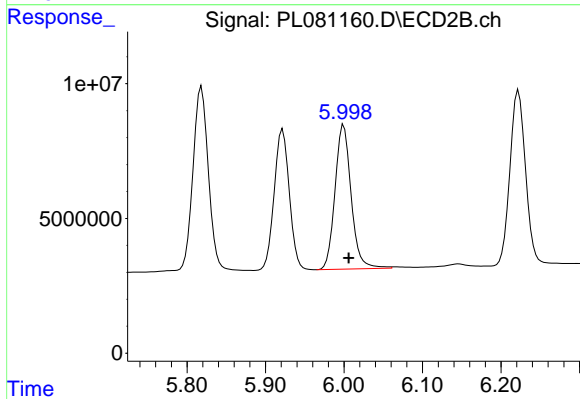
#17 4,4'-DDT

R.T.: 5.922 min
 Delta R.T.: -0.005 min
 Response: 70084142
 Conc: 72.92 ng/ml



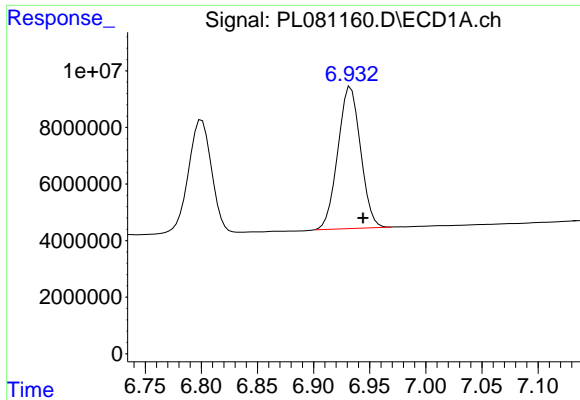
#18 Endrin aldehyde

R.T.: 6.699 min
 Delta R.T.: -0.010 min
 Response: 58991850
 Conc: 70.42 ng/ml



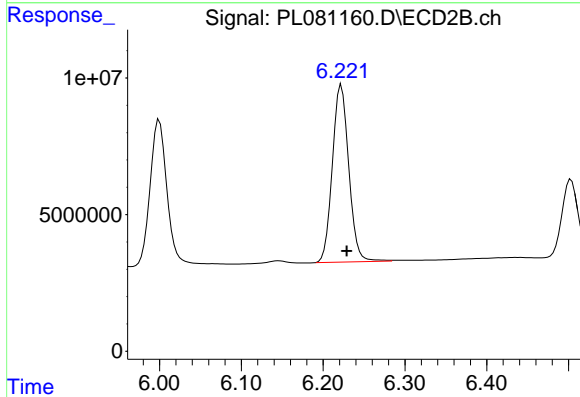
#18 Endrin aldehyde

R.T.: 6.000 min
 Delta R.T.: -0.006 min
 Response: 76561712
 Conc: 77.98 ng/ml

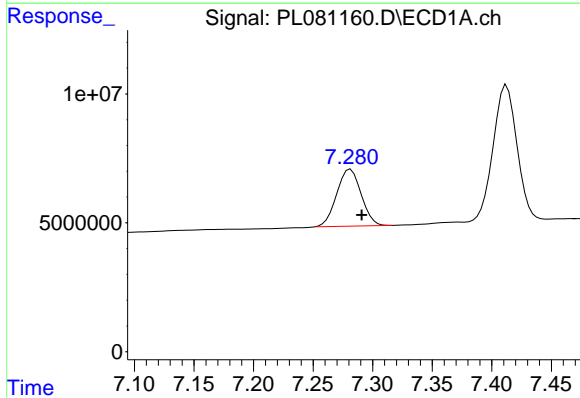


#19 Endosulfan Sulfate
 R.T.: 6.933 min
 Delta R.T.: -0.011 min
 Response: 70393158
 Conc: 68.13 ng/ml

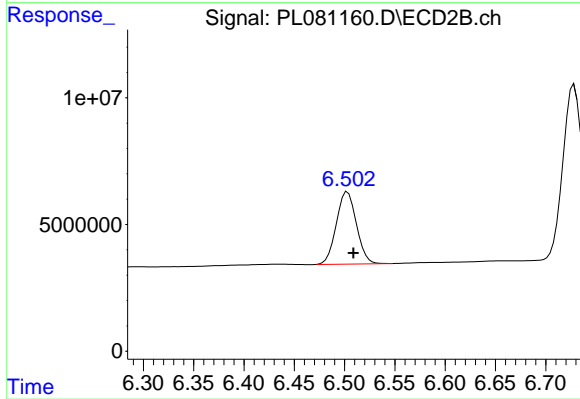
Instrument :
 ECD_L
 ClientSampleId :



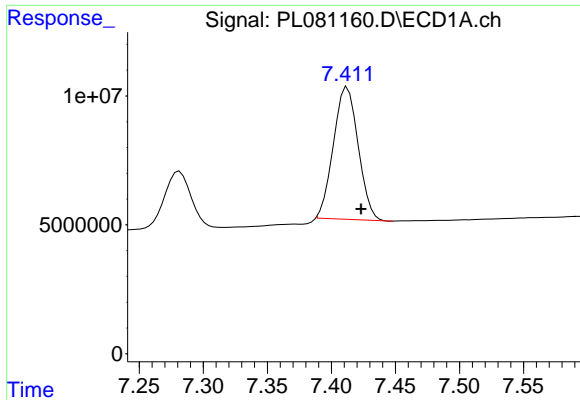
#19 Endosulfan Sulfate
 R.T.: 6.222 min
 Delta R.T.: -0.007 min
 Response: 90543914
 Conc: 73.21 ng/ml



#20 Methoxychlor
 R.T.: 7.281 min
 Delta R.T.: -0.009 min
 Response: 31487981
 Conc: 67.79 ng/ml



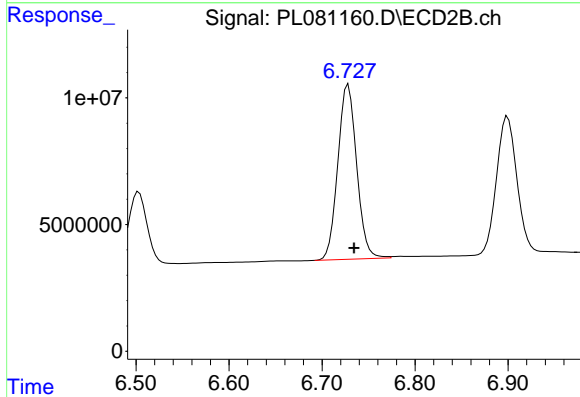
#20 Methoxychlor
 R.T.: 6.503 min
 Delta R.T.: -0.006 min
 Response: 39536768
 Conc: 78.72 ng/ml



#21 Endrin ketone

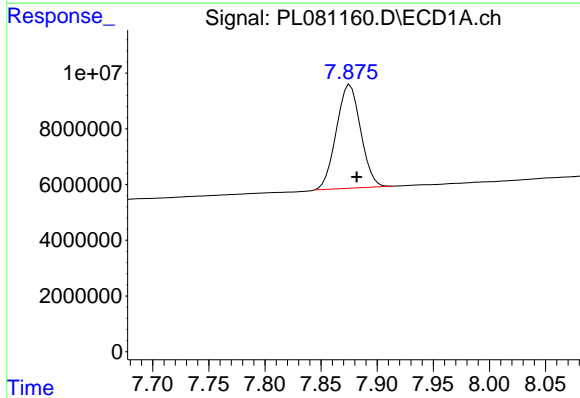
R.T.: 7.412 min
 Delta R.T.: -0.011 min
 Response: 68888423
 Conc: 60.03 ng/ml

Instrument :
 ECD_L
 ClientSampleId :



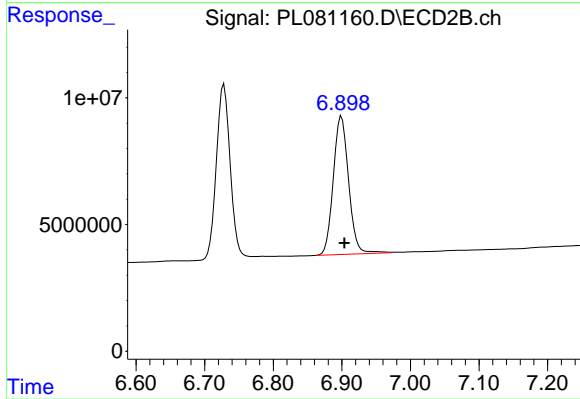
#21 Endrin ketone

R.T.: 6.728 min
 Delta R.T.: -0.006 min
 Response: 97106281
 Conc: 72.78 ng/ml



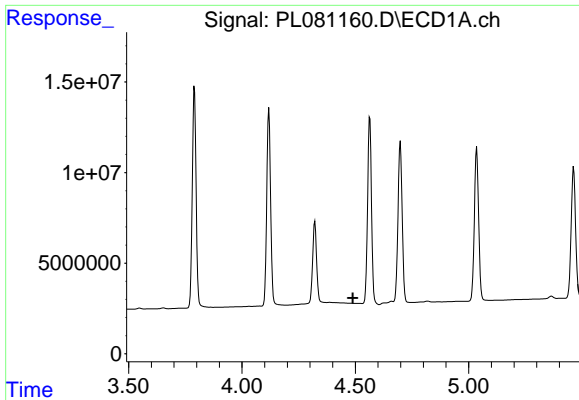
#22 Mirex

R.T.: 7.876 min
 Delta R.T.: -0.006 min
 Response: 55987576
 Conc: 64.85 ng/ml



#22 Mirex

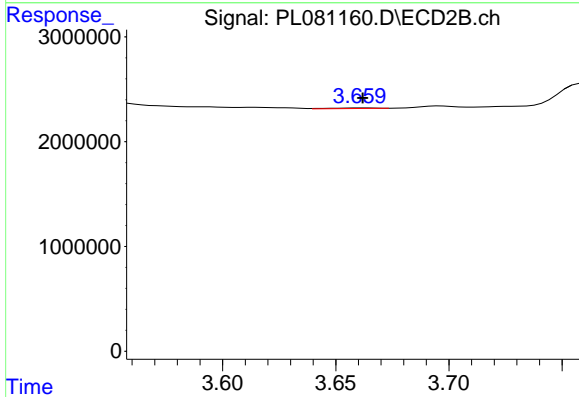
R.T.: 6.899 min
 Delta R.T.: -0.004 min
 Response: 85029595
 Conc: 75.58 ng/ml



#23 Chlordane-1

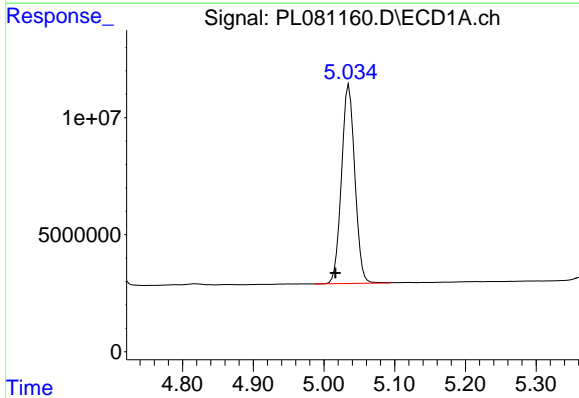
R.T.: 0.000 min
 Exp R.T.: 4.488 min
 Response: 0
 Conc: N.D.

Instrument :
 ECD_L
 ClientSampleId :



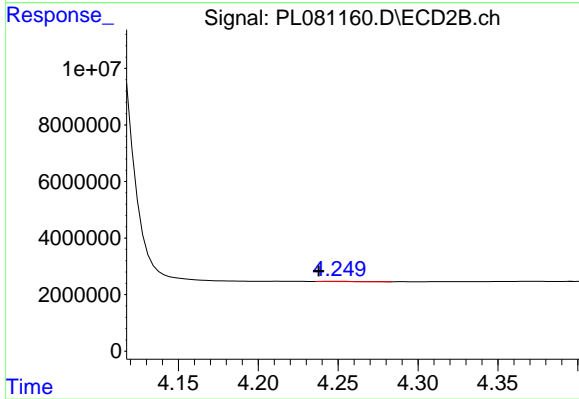
#23 Chlordane-1

R.T.: 3.662 min
 Delta R.T.: 0.000 min
 Response: 76604
 Conc: 1.10 ng/ml



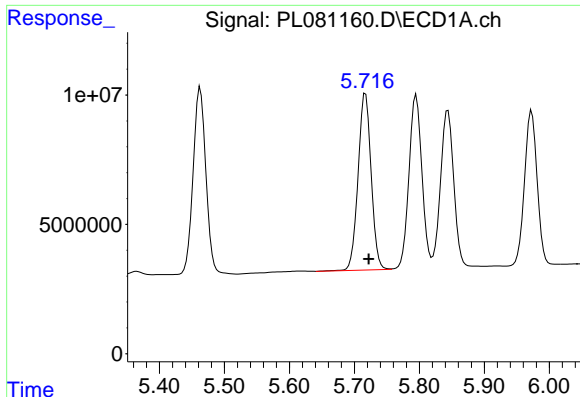
#24 Chlordane-2

R.T.: 5.035 min
 Delta R.T.: 0.019 min
 Response: 111312074
 Conc: 1756.41 ng/ml



#24 Chlordane-2

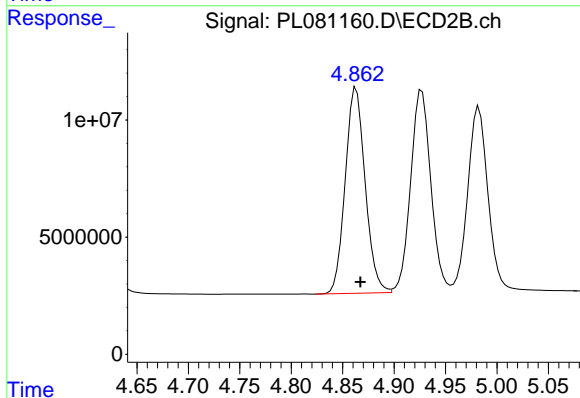
R.T.: 4.250 min
 Delta R.T.: 0.012 min
 Response: 95330
 Conc: 1.17 ng/ml



#25 Chlordane-3

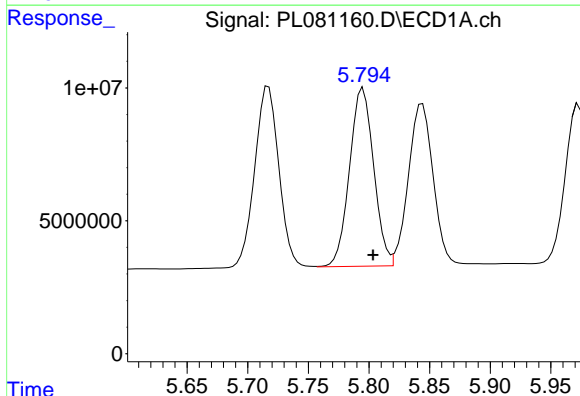
R.T.: 5.717 min
 Delta R.T.: -0.005 min
 Response: 95077275
 Conc: 427.31 ng/ml

Instrument :
 ECD_L
 ClientSampleId :



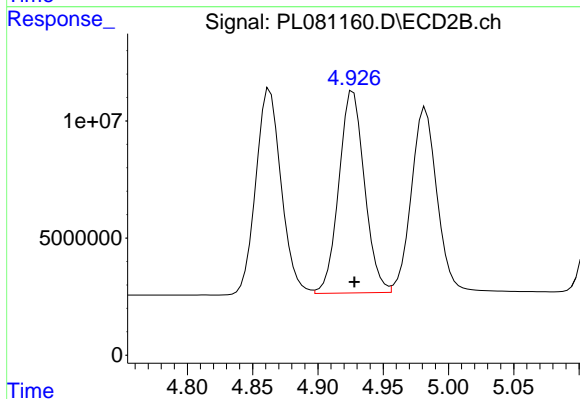
#25 Chlordane-3

R.T.: 4.863 min
 Delta R.T.: -0.004 min
 Response: 118367606
 Conc: 562.03 ng/ml



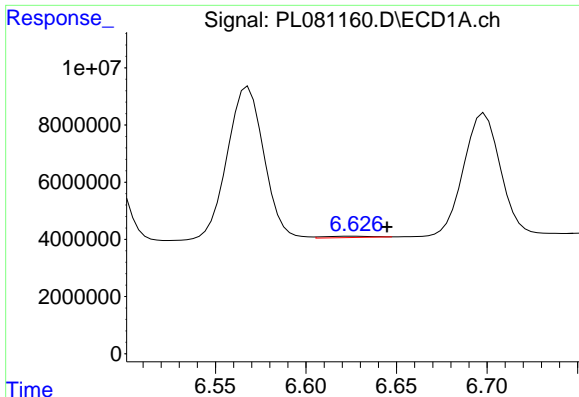
#26 Chlordane-4

R.T.: 5.795 min
 Delta R.T.: -0.008 min
 Response: 92974103
 Conc: 348.80 ng/ml



#26 Chlordane-4

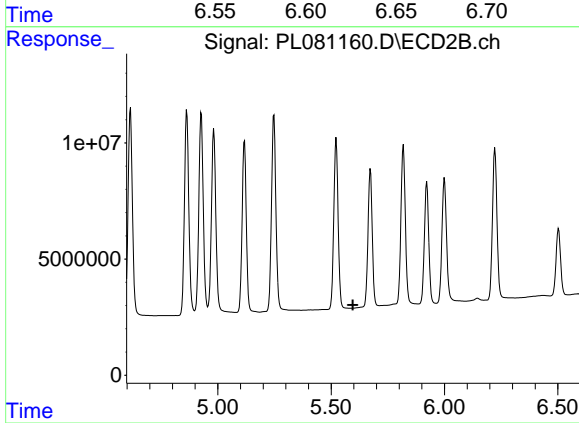
R.T.: 4.927 min
 Delta R.T.: -0.001 min
 Response: 117721978
 Conc: 535.93 ng/ml



#27 Chlordane-5

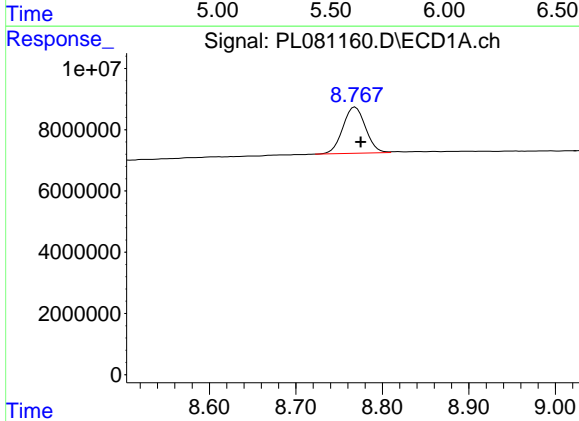
R.T.: 6.628 min
Delta R.T.: -0.017 min
Response: 845468
Conc: 18.90 ng/ml

Instrument :
ECD_L
ClientSampleId :



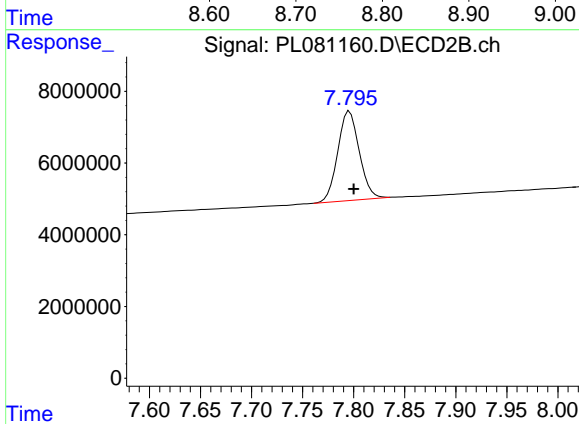
#27 Chlordane-5

R.T.: 0.000 min
Exp R.T. : 5.596 min
Response: 0
Conc: N.D.



#28 Decachlorobiphenyl

R.T.: 8.769 min
Delta R.T.: -0.007 min
Response: 27369401
Conc: 28.58 ng/ml



#28 Decachlorobiphenyl

R.T.: 7.796 min
Delta R.T.: -0.004 min
Response: 36476928
Conc: 32.76 ng/ml