

Data Path : Z:\pestpcbsrv\HPCHEM1\ECD_L\Data\PL030119\
 Data File : PL045317.D
 Signal(s) : Signal #1: ECD1A.ch Signal #2: ECD2B.ch
 Acq On : 01 Mar 2019 16:42
 Operator : AJ\SJ
 Sample : K1650-02MSD
 Misc :
 ALS Vial : 19 Sample Multiplier: 1

Instrument :
 ECD_L
 ClientSampleId :
 B-1(17-18)MSD

Integration File signal 1: autoint1.e
 Integration File signal 2: autoint2.e
 Quant Time: Mar 01 22:11:27 2019
 Quant Method : Z:\pestpcbsrv\HPCHEM1\ECD_L\methods\PL022719.M
 Quant Title : GC Extractables
 QLast Update : Wed Feb 27 17:00:03 2019
 Response via : Initial Calibration
 Integrator: ChemStation

Volume Inj. : 2 µl
 Signal #1 Phase : ZB-MR1 Signal #2 Phase: ZB-MR2
 Signal #1 Info : 30M x 0.32mm x0.5 Signal #2 Info : 30M x 0.32mm x0.25µm

Compound	RT#1	RT#2	Resp#1	Resp#2	ng/ml	ng/ml

System Monitoring Compounds						
1) SA Tetrachlo...	3.364	3.982	132.1E6	42164105	19.203	19.689
28) SA Decachlor...	8.047	9.038	125.4E6	40489286	14.984	17.720
Target Compounds						
2) A alpha-BHC	3.794	4.372	535.7E6	145.1E6	48.233	47.768
3) MA gamma-BHC...	4.071	4.656	489.4E6	137.0E6	48.419	48.513
4) MA Heptachlor	4.359	5.163	504.5E6	140.0E6	47.810	47.063
5) MB Aldrin	4.599	5.468	460.6E6	129.0E6	47.352	47.753
6) B beta-BHC	4.323	4.828	203.5E6	62331877	47.487	49.082
7) B delta-BHC	4.520	5.044	470.1E6	97614632	49.180	45.383
8) B Heptachlo...	5.037	5.854	441.8E6	110.5E6	47.339	46.016
9) A Endosulfan I	5.369	6.210	418.7E6	114.8E6	46.845	46.117
10) B gamma-Chl...	5.260	6.088	463.9E6	126.7E6	47.400	47.209
11) B alpha-Chl...	5.316	6.160	456.4E6	126.8E6	47.071	46.987
12) B 4,4'-DDE	5.483	6.318	418.3E6	107.1E6	47.657	45.847
13) MA Dieldrin	5.609	6.467	455.4E6	113.7E6	47.650	44.251
14) MA Endrin	5.862	6.684	430.2E6	97835630	47.767	42.999
15) B Endosulfa...	6.137	6.894	396.4E6	97752044	45.731	41.568
16) A 4,4'-DDD	5.995	6.808	340.5E6	80904031	46.503	42.070
17) MA 4,4'-DDT	6.230	7.106	354.9E6	85033432	47.316	43.089
18) B Endrin al...	6.303	7.018	315.8E6	82415571	43.207	40.317
19) B Endosulfa...	6.515	7.240	338.5E6	91553863	41.650	40.699
20) A Methoxychlor	6.776	7.564	159.2E6	44350280	36.253	36.133
21) B Endrin ke...	6.999	7.710	352.9E6	94659882	38.300	39.800
22) Mirex	7.176	8.163	268.3E6	75333477	36.060	37.824
24) Chlordane-2	0.000	5.468f	0	129.0E6	N.D.	1067.427 #
25) Chlordane-3	5.260	6.088	463.9E6	126.7E6	404.438	325.076
26) Chlordane-4	5.316	6.160	456.4E6	126.8E6	430.587	270.948 #
27) Chlordane-5	6.137	0.000	396.4E6	0	1147.908	N.D. #

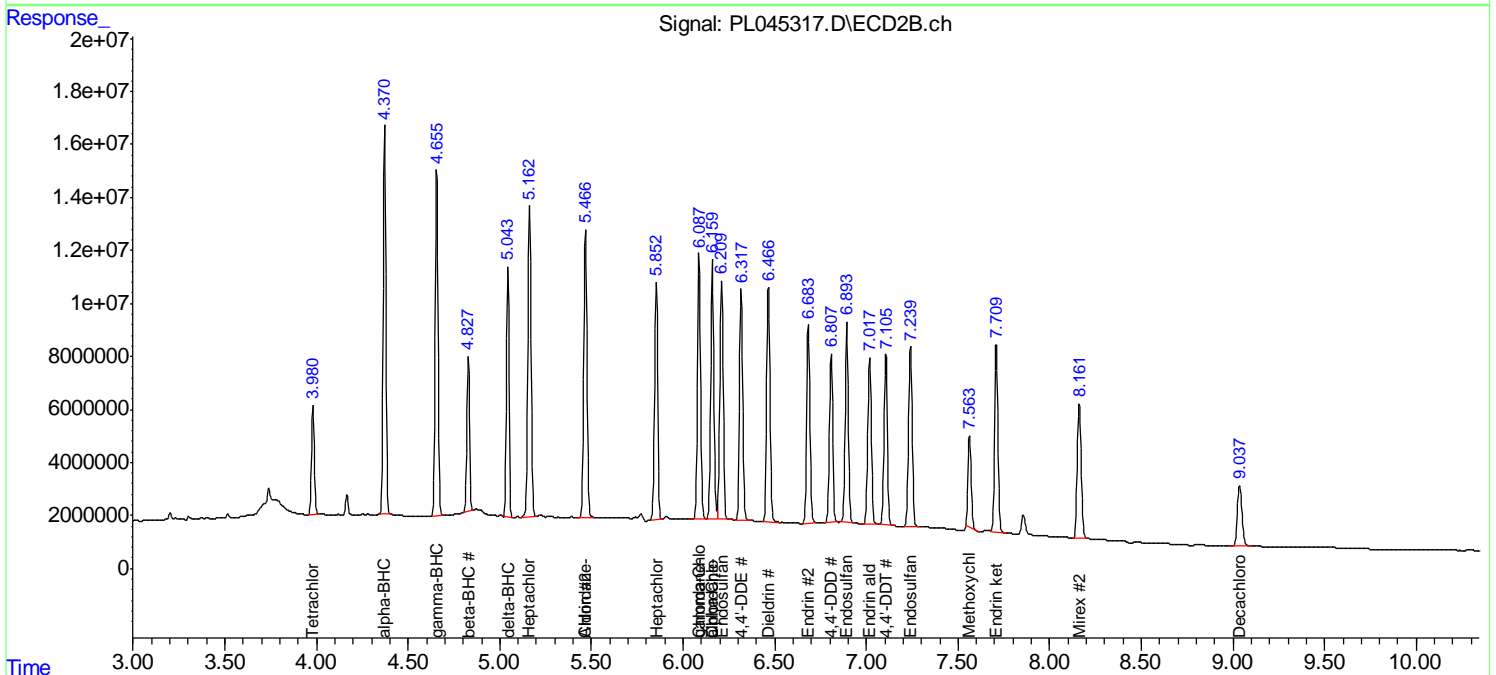
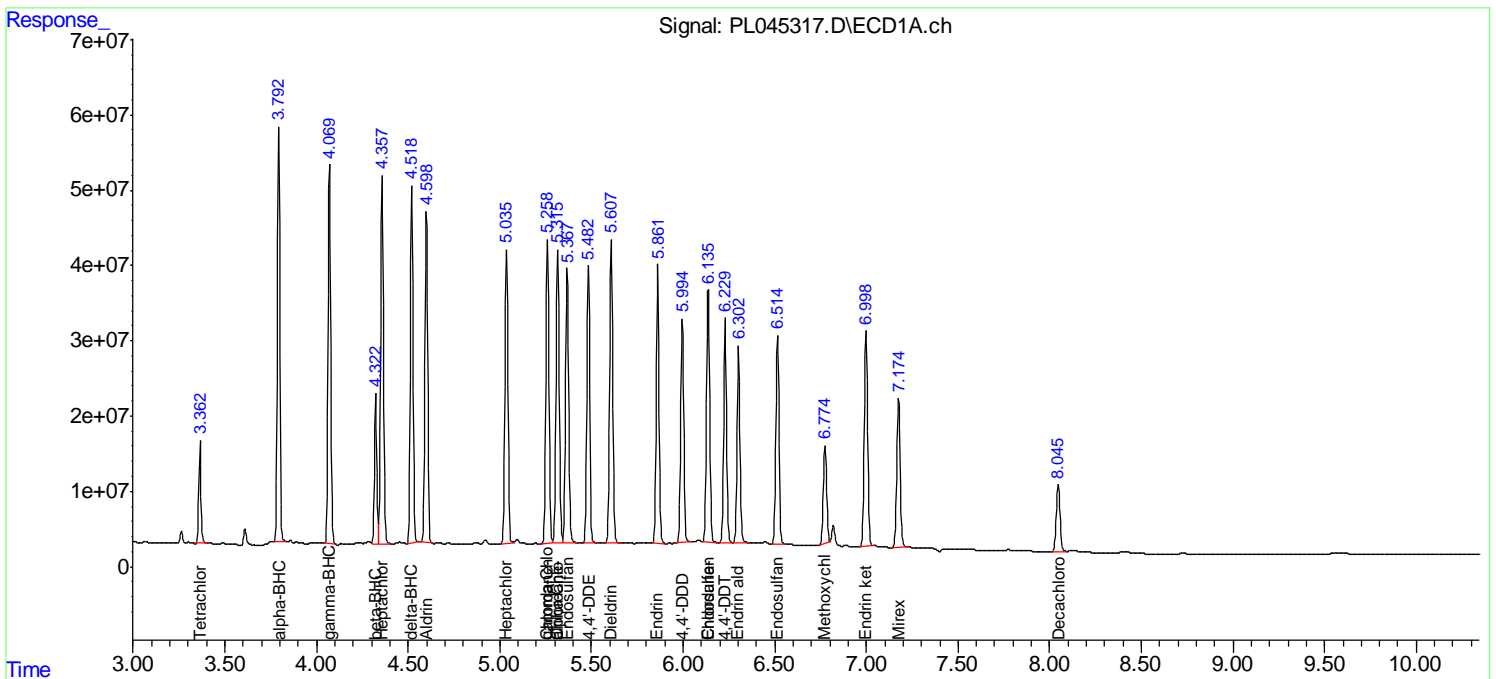
(f)=RT Delta > 1/2 Window (#)=Amounts differ by > 25% (m)=manual int.

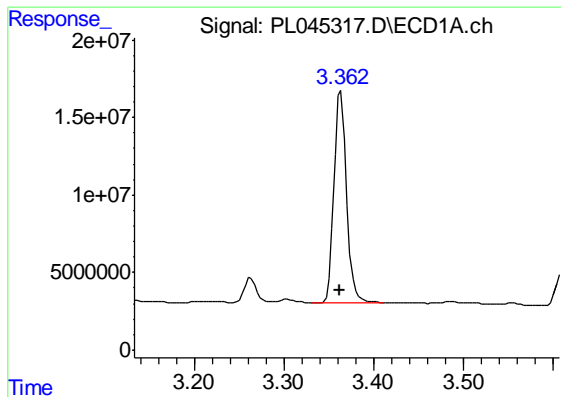
Data Path : Z:\pestpcbsrv\HPCHEM1\ECD_L\Data\PL030119\
 Data File : PL045317.D
 Signal(s) : Signal #1: ECD1A.ch Signal #2: ECD2B.ch
 Acq On : 01 Mar 2019 16:42
 Operator : AJ\SJ
 Sample : K1650-02MSD
 Misc :
 ALS Vial : 19 Sample Multiplier: 1

Instrument :
 ECD_L
 Client Sampled :
 B-1(17-18)MSD

Integration File signal 1: autoint1.e
 Integration File signal 2: autoint2.e
 Quant Time: Mar 01 22:11:27 2019
 Quant Method : Z:\pestpcbsrv\HPCHEM1\ECD_L\methods\PL022719.M
 Quant Title : GC Extractables
 QLast Update : Wed Feb 27 17:00:03 2019
 Response via : Initial Calibration
 Integrator: ChemStation

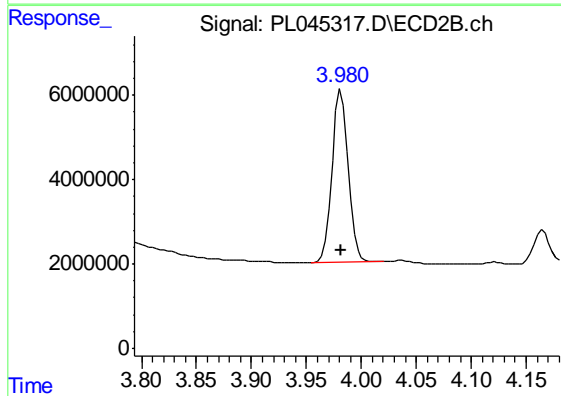
Volume Inj. : 2 µl
 Signal #1 Phase : ZB-MR1 Signal #2 Phase: ZB-MR2
 Signal #1 Info : 30M x 0.32mm x0.5 Signal #2 Info : 30M x 0.32mm x0.25µm



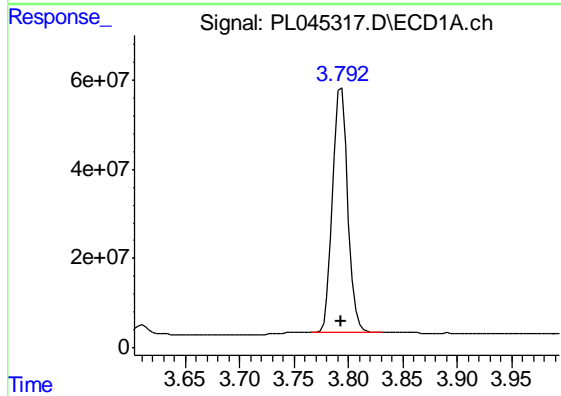


#1 Tetrachloro-m-xylene
 R.T.: 3.364 min
 Delta R.T.: 0.000 min
 Response: 132105140
 Conc: 19.20 ng/ml

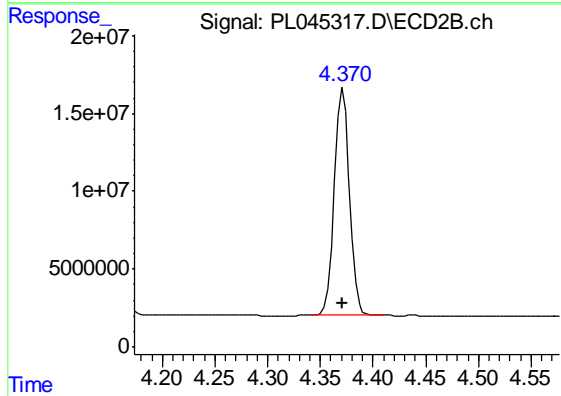
Instrument :
 ECD_L
 ClientSampleId :
 B-1(17-18)MSD



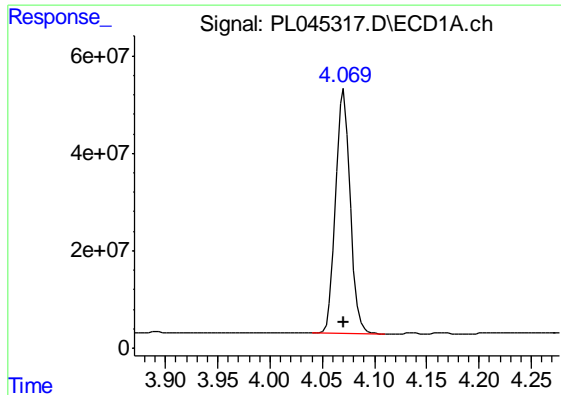
#1 Tetrachloro-m-xylene
 R.T.: 3.982 min
 Delta R.T.: 0.000 min
 Response: 42164105
 Conc: 19.69 ng/ml



#2 alpha-BHC
 R.T.: 3.794 min
 Delta R.T.: 0.000 min
 Response: 535736289
 Conc: 48.23 ng/ml



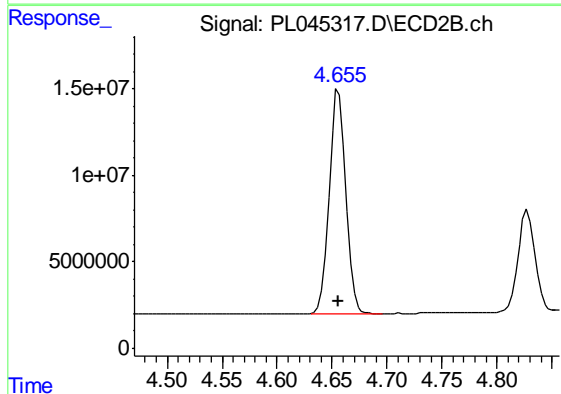
#2 alpha-BHC
 R.T.: 4.372 min
 Delta R.T.: 0.000 min
 Response: 145149494
 Conc: 47.77 ng/ml



#3 gamma-BHC (Lindane)

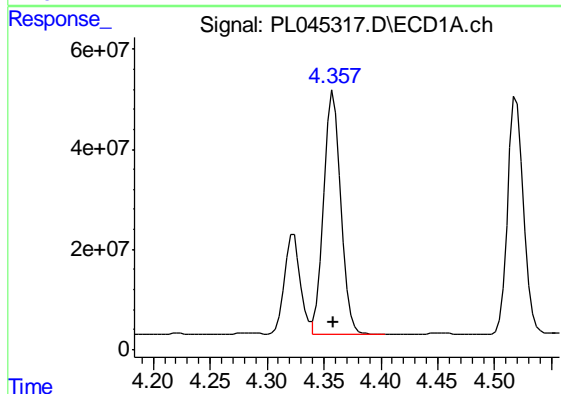
R.T.: 4.071 min
Delta R.T.: 0.000 min
Response: 489377857
Conc: 48.42 ng/ml

Instrument :
ECD_L
ClientSampleId :
B-1(17-18)MSD



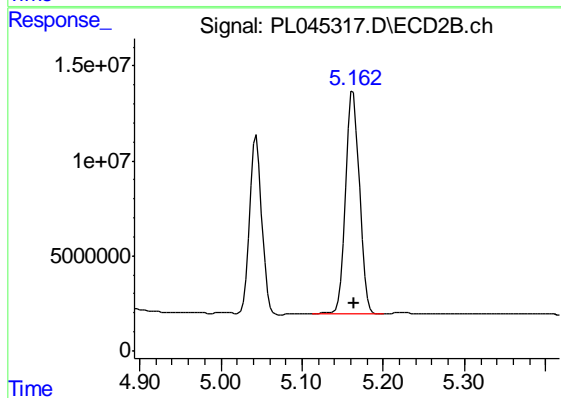
#3 gamma-BHC (Lindane)

R.T.: 4.656 min
Delta R.T.: 0.000 min
Response: 137030918
Conc: 48.51 ng/ml



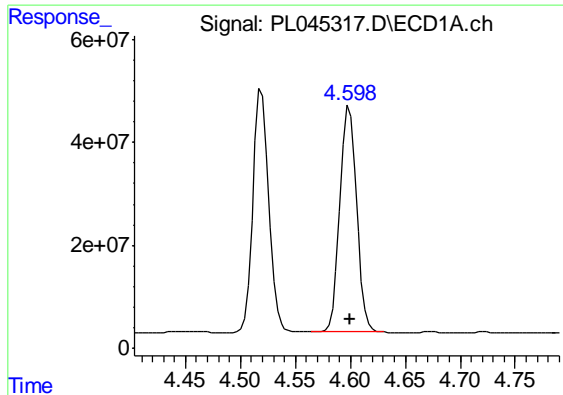
#4 Heptachlor

R.T.: 4.359 min
Delta R.T.: 0.000 min
Response: 504507862
Conc: 47.81 ng/ml



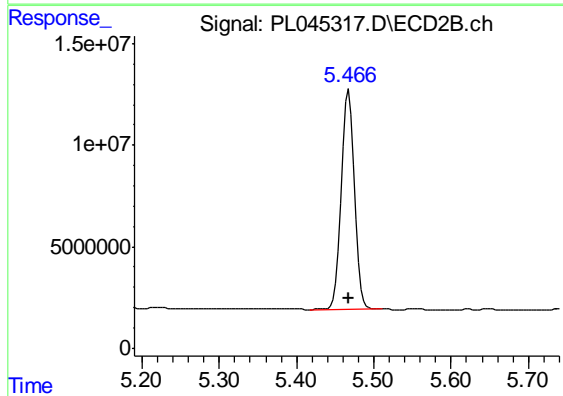
#4 Heptachlor

R.T.: 5.163 min
Delta R.T.: 0.000 min
Response: 140009013
Conc: 47.06 ng/ml

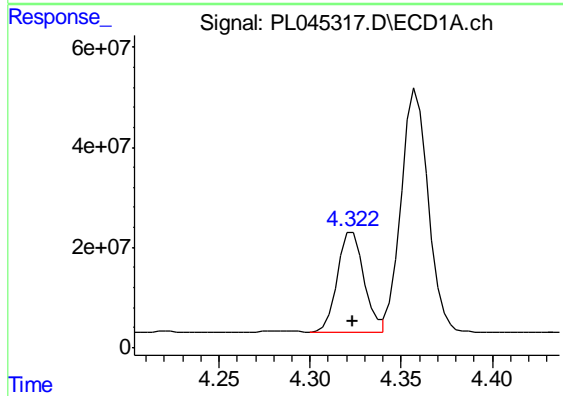


#5 Aldrin
 R.T.: 4.599 min
 Delta R.T.: 0.000 min
 Response: 460568500
 Conc: 47.35 ng/ml

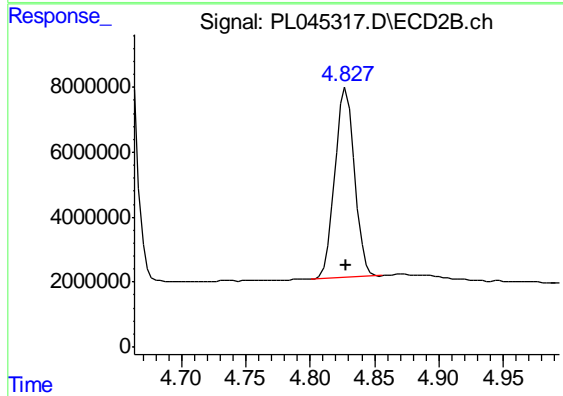
Instrument :
 ECD_L
 ClientSampleId :
 B-1(17-18)MSD



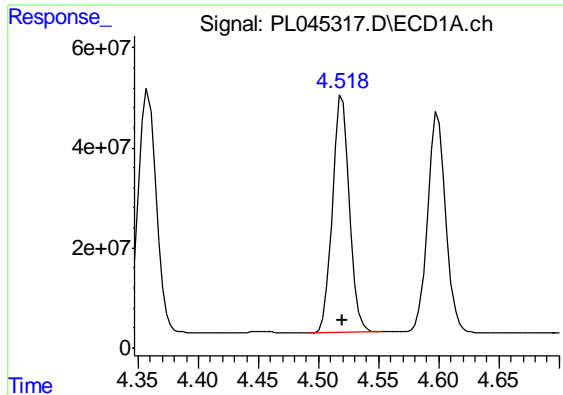
#5 Aldrin
 R.T.: 5.468 min
 Delta R.T.: 0.000 min
 Response: 128977396
 Conc: 47.75 ng/ml



#6 beta-BHC
 R.T.: 4.323 min
 Delta R.T.: 0.000 min
 Response: 203531600
 Conc: 47.49 ng/ml



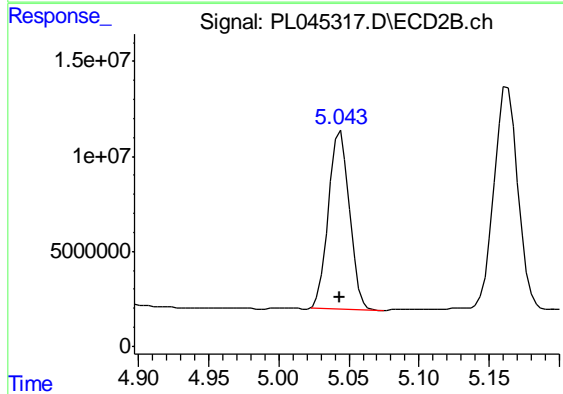
#6 beta-BHC
 R.T.: 4.828 min
 Delta R.T.: 0.000 min
 Response: 62331877
 Conc: 49.08 ng/ml



#7 delta-BHC

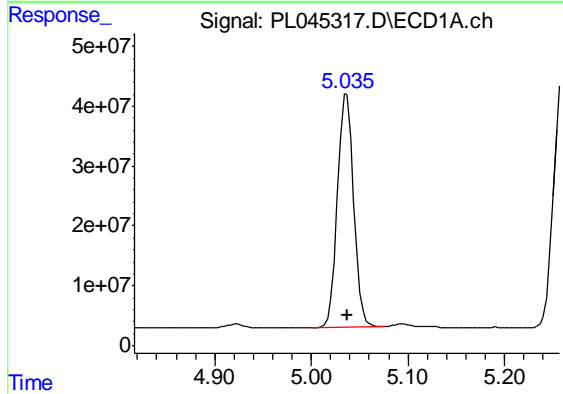
R.T.: 4.520 min
 Delta R.T.: 0.000 min
 Response: 470054277
 Conc: 49.18 ng/ml

Instrument :
 ECD_L
 ClientSampleId :
 B-1(17-18)MSD



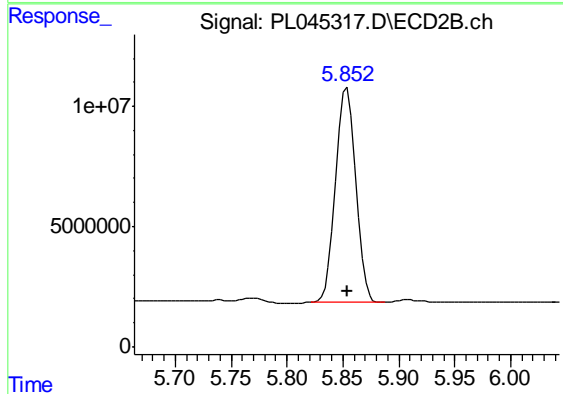
#7 delta-BHC

R.T.: 5.044 min
 Delta R.T.: 0.000 min
 Response: 97614632
 Conc: 45.38 ng/ml



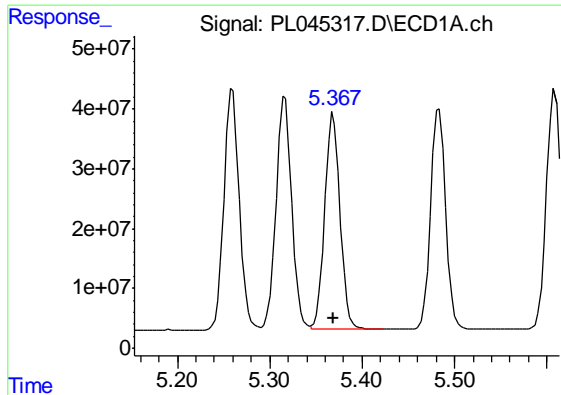
#8 Heptachlor epoxide

R.T.: 5.037 min
 Delta R.T.: 0.000 min
 Response: 441823166
 Conc: 47.34 ng/ml



#8 Heptachlor epoxide

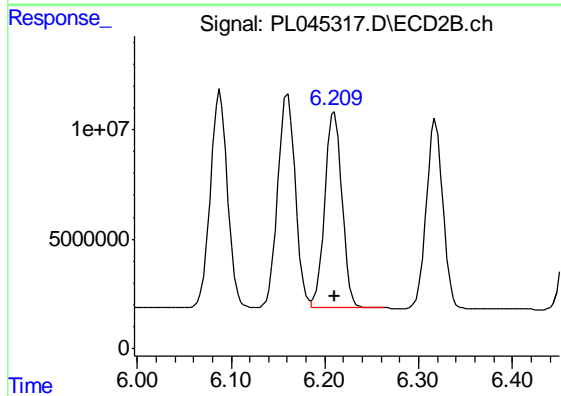
R.T.: 5.854 min
 Delta R.T.: 0.000 min
 Response: 110527799
 Conc: 46.02 ng/ml



#9 Endosulfan I

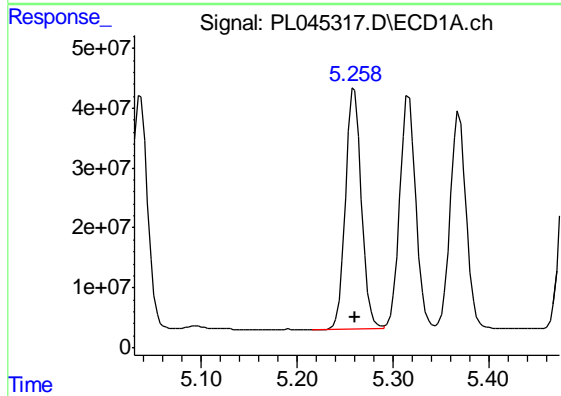
R.T.: 5.369 min
 Delta R.T.: 0.000 min
 Response: 418713096
 Conc: 46.84 ng/ml

Instrument :
 ECD_L
 ClientSampleId :
 B-1(17-18)MSD



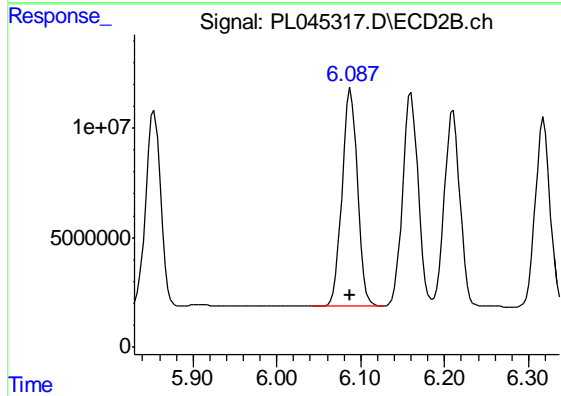
#9 Endosulfan I

R.T.: 6.210 min
 Delta R.T.: 0.000 min
 Response: 114844142
 Conc: 46.12 ng/ml



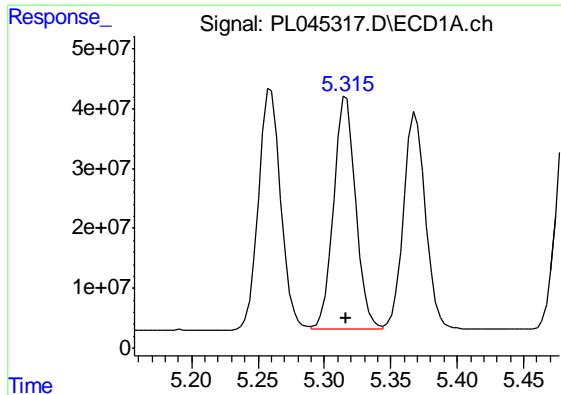
#10 gamma-Chlordane

R.T.: 5.260 min
 Delta R.T.: 0.000 min
 Response: 463899608
 Conc: 47.40 ng/ml



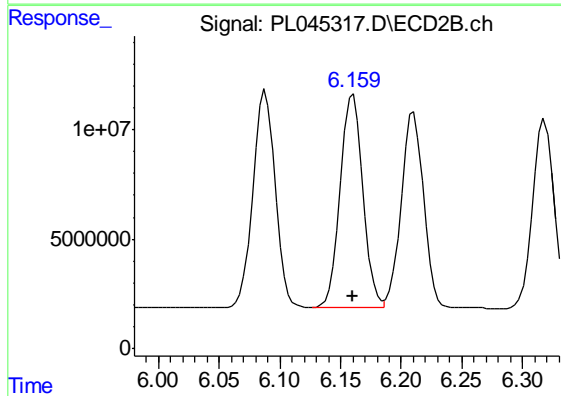
#10 gamma-Chlordane

R.T.: 6.088 min
 Delta R.T.: 0.000 min
 Response: 126659502
 Conc: 47.21 ng/ml

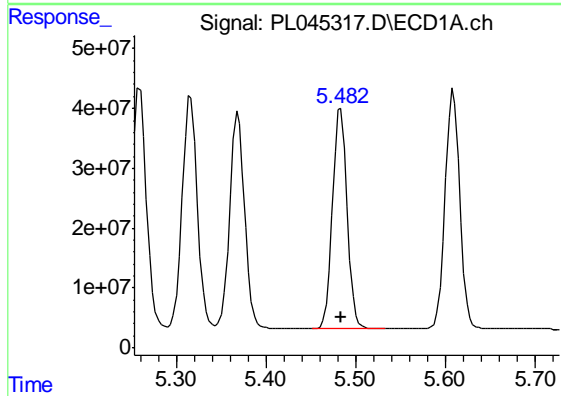


#11 alpha-Chlordane
 R.T.: 5.316 min
 Delta R.T.: 0.000 min
 Response: 456444704
 Conc: 47.07 ng/ml

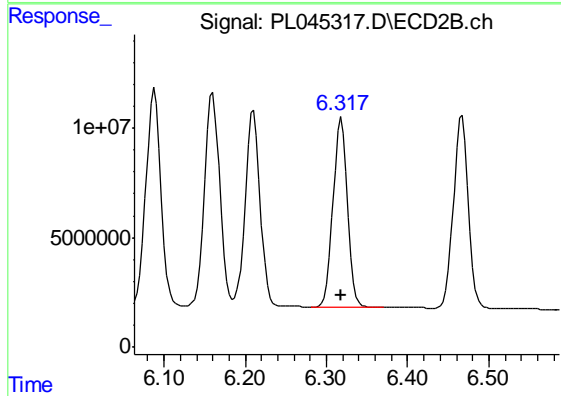
Instrument :
 ECD_L
 ClientSampleId :
 B-1(17-18)MSD



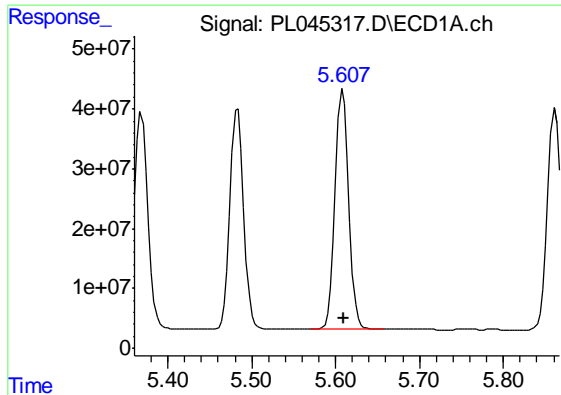
#11 alpha-Chlordane
 R.T.: 6.160 min
 Delta R.T.: 0.000 min
 Response: 126756184
 Conc: 46.99 ng/ml



#12 4,4'-DDE
 R.T.: 5.483 min
 Delta R.T.: 0.000 min
 Response: 418342881
 Conc: 47.66 ng/ml

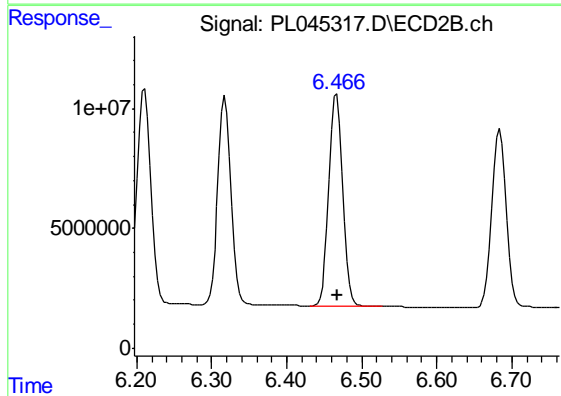


#12 4,4'-DDE
 R.T.: 6.318 min
 Delta R.T.: 0.000 min
 Response: 107093316
 Conc: 45.85 ng/ml

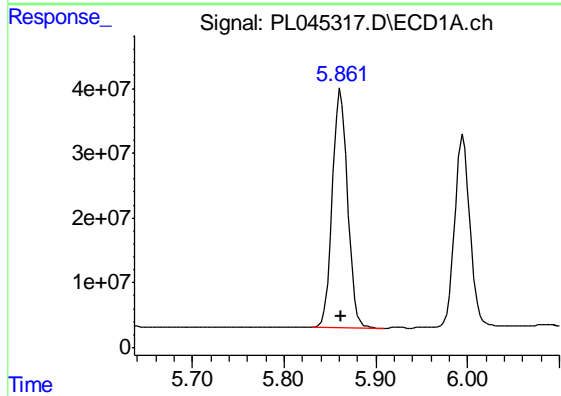


#13 Dieldrin
 R.T.: 5.609 min
 Delta R.T.: 0.000 min
 Response: 455434897
 Conc: 47.65 ng/ml

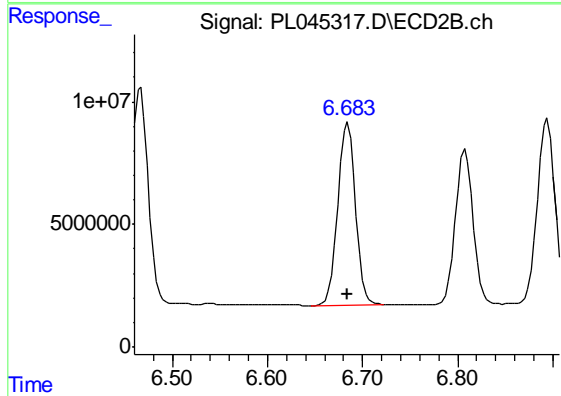
Instrument :
 ECD_L
 ClientSampleId :
 B-1(17-18)MSD



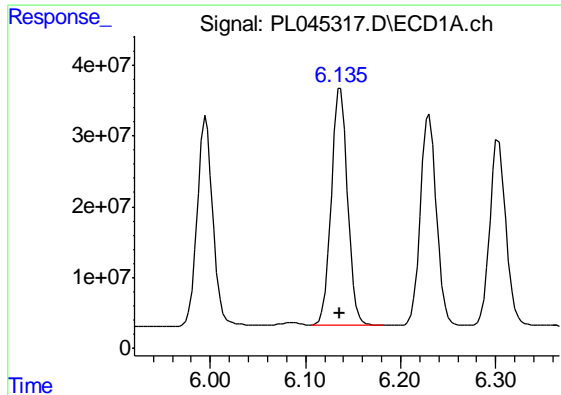
#13 Dieldrin
 R.T.: 6.467 min
 Delta R.T.: 0.000 min
 Response: 113712133
 Conc: 44.25 ng/ml



#14 Endrin
 R.T.: 5.862 min
 Delta R.T.: 0.000 min
 Response: 430176925
 Conc: 47.77 ng/ml



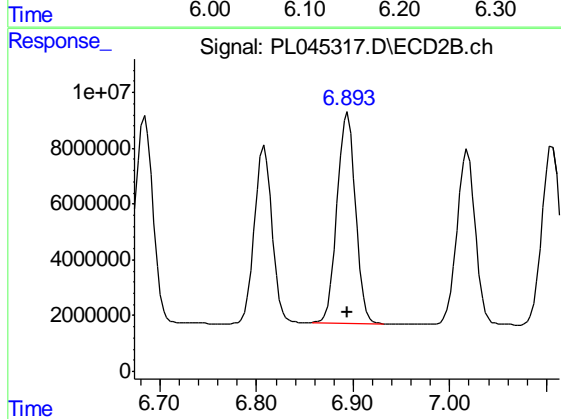
#14 Endrin
 R.T.: 6.684 min
 Delta R.T.: 0.000 min
 Response: 97835630
 Conc: 43.00 ng/ml



#15 Endosulfan II

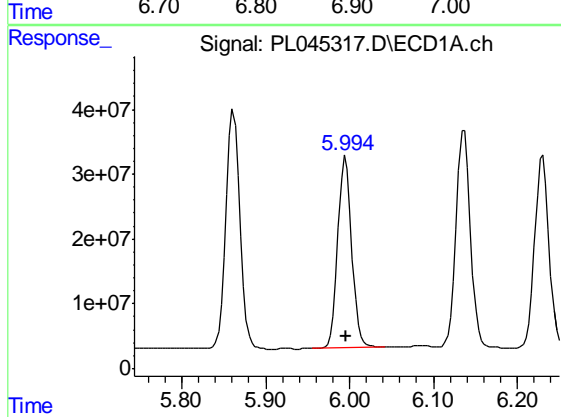
R.T.: 6.137 min
Delta R.T.: 0.000 min
Response: 396425995
Conc: 45.73 ng/ml

Instrument :
ECD_L
ClientSampleId :
B-1(17-18)MSD



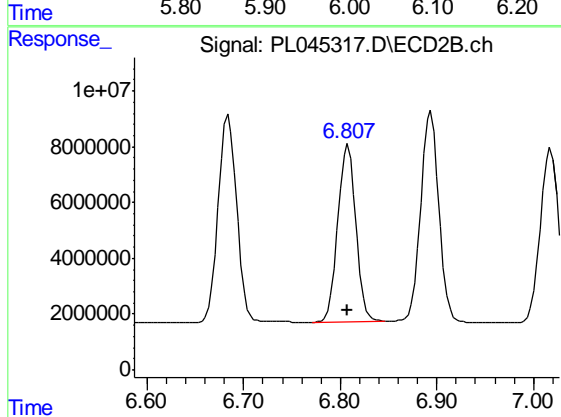
#15 Endosulfan II

R.T.: 6.894 min
Delta R.T.: 0.000 min
Response: 97752044
Conc: 41.57 ng/ml



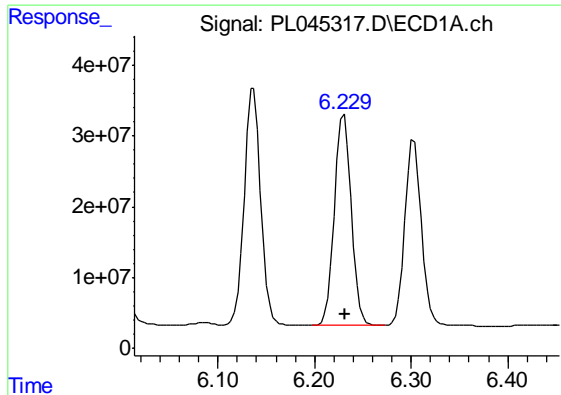
#16 4,4'-DDD

R.T.: 5.995 min
Delta R.T.: 0.000 min
Response: 340482597
Conc: 46.50 ng/ml



#16 4,4'-DDD

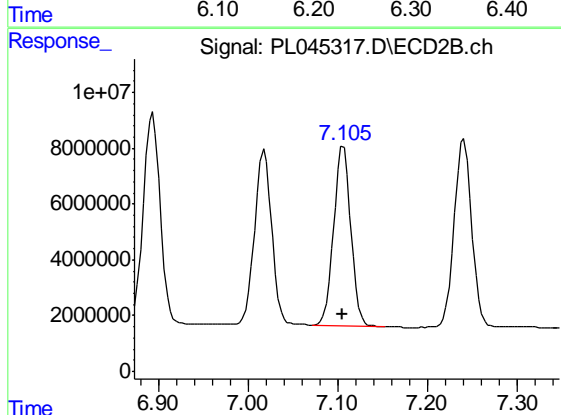
R.T.: 6.808 min
Delta R.T.: 0.000 min
Response: 80904031
Conc: 42.07 ng/ml



#17 4,4'-DDT

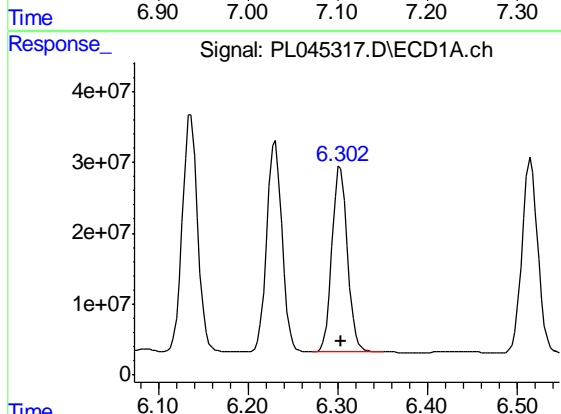
R.T.: 6.230 min
 Delta R.T.: 0.000 min
 Response: 354878817
 Conc: 47.32 ng/ml

Instrument :
 ECD_L
 ClientSampleId :
 B-1(17-18)MSD



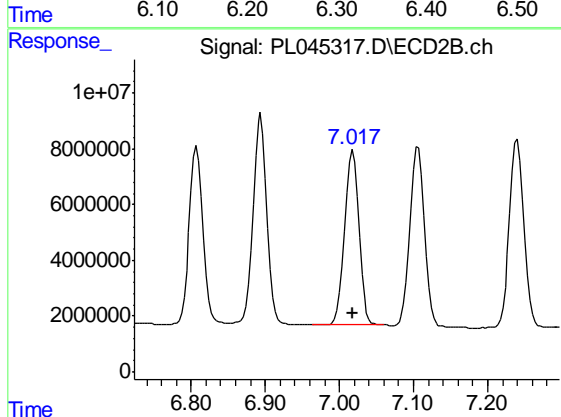
#17 4,4'-DDT

R.T.: 7.106 min
 Delta R.T.: 0.000 min
 Response: 85033432
 Conc: 43.09 ng/ml



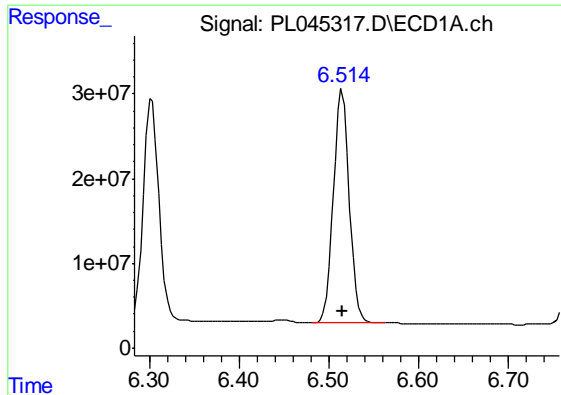
#18 Endrin aldehyde

R.T.: 6.303 min
 Delta R.T.: 0.000 min
 Response: 315828952
 Conc: 43.21 ng/ml



#18 Endrin aldehyde

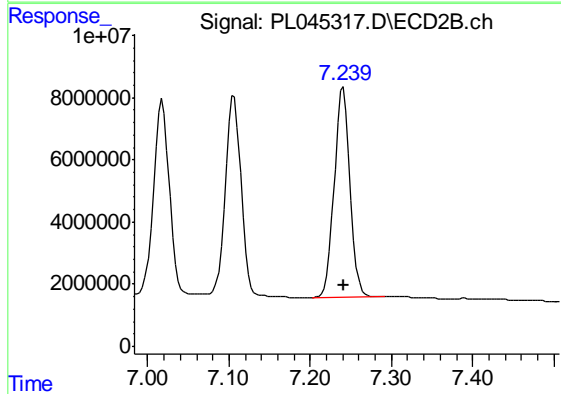
R.T.: 7.018 min
 Delta R.T.: 0.000 min
 Response: 82415571
 Conc: 40.32 ng/ml



#19 Endosulfan Sulfate

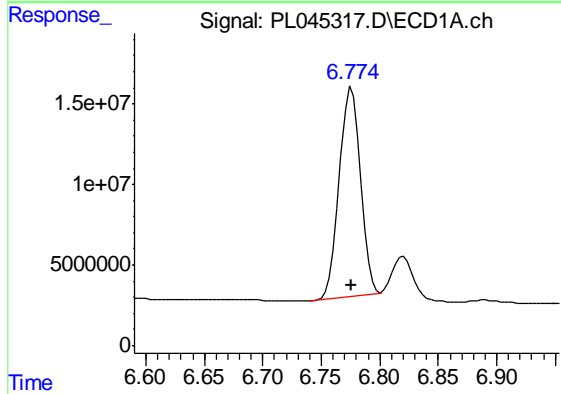
R.T.: 6.515 min
 Delta R.T.: 0.000 min
 Response: 338536322
 Conc: 41.65 ng/ml

Instrument :
 ECD_L
 ClientSampleId :
 B-1(17-18)MSD



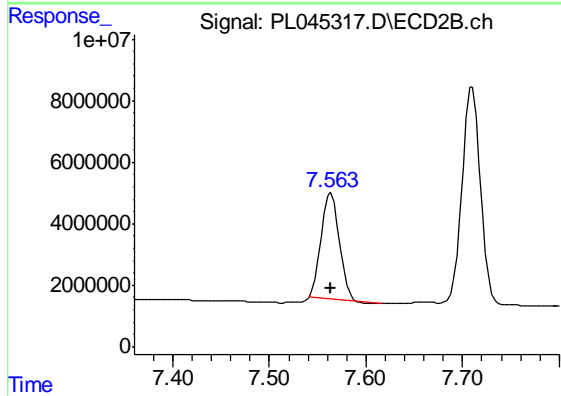
#19 Endosulfan Sulfate

R.T.: 7.240 min
 Delta R.T.: 0.000 min
 Response: 91553863
 Conc: 40.70 ng/ml



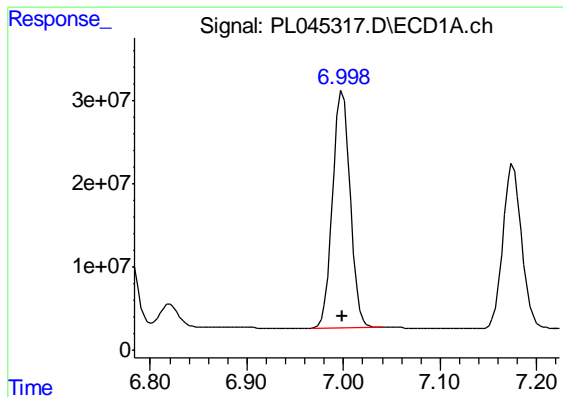
#20 Methoxychlor

R.T.: 6.776 min
 Delta R.T.: 0.000 min
 Response: 159210899
 Conc: 36.25 ng/ml



#20 Methoxychlor

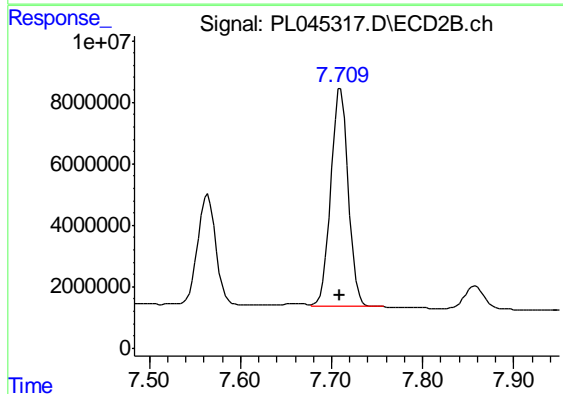
R.T.: 7.564 min
 Delta R.T.: 0.000 min
 Response: 44350280
 Conc: 36.13 ng/ml



#21 Endrin ketone

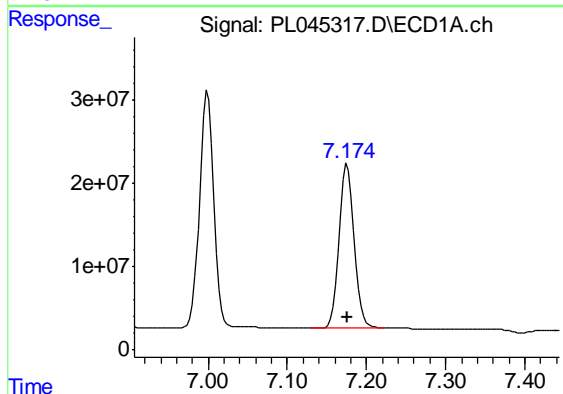
R.T.: 6.999 min
 Delta R.T.: 0.000 min
 Response: 352850619
 Conc: 38.30 ng/ml

Instrument :
 ECD_L
 ClientSampleId :
 B-1(17-18)MSD



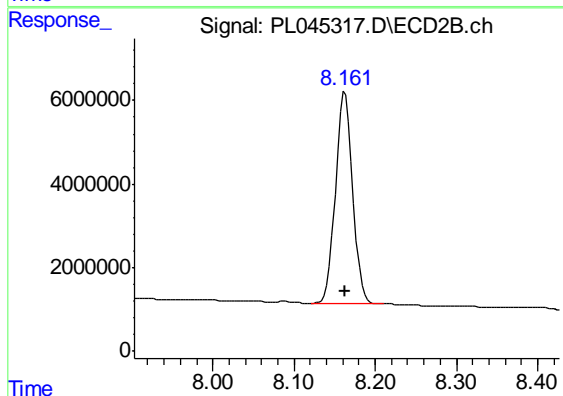
#21 Endrin ketone

R.T.: 7.710 min
 Delta R.T.: 0.000 min
 Response: 94659882
 Conc: 39.80 ng/ml



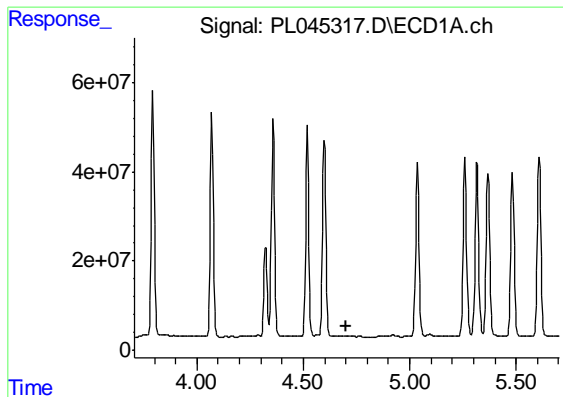
#22 Mirex

R.T.: 7.176 min
 Delta R.T.: 0.000 min
 Response: 268289230
 Conc: 36.06 ng/ml



#22 Mirex

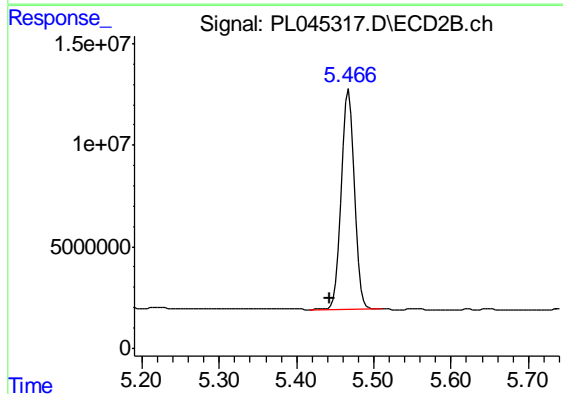
R.T.: 8.163 min
 Delta R.T.: 0.000 min
 Response: 75333477
 Conc: 37.82 ng/ml



#24 Chlordane-2

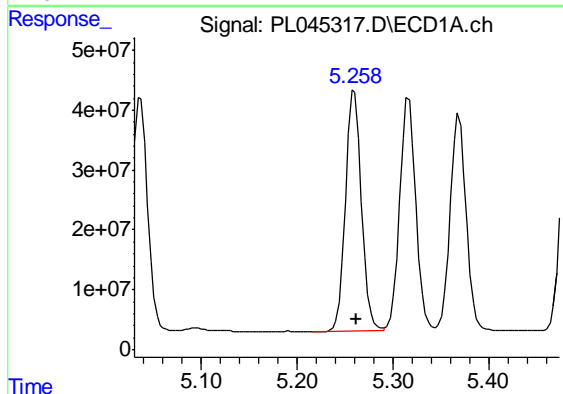
R.T.: 0.000 min
Exp R.T. : 4.704 min
Response: 0
Conc: N.D.

Instrument :
ECD_L
ClientSampleId :
B-1(17-18)MSD



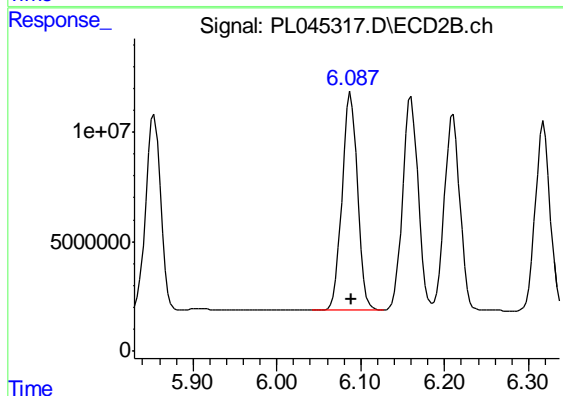
#24 Chlordane-2

R.T.: 5.468 min
Delta R.T.: 0.025 min
Response: 128977396
Conc: 1067.43 ng/ml



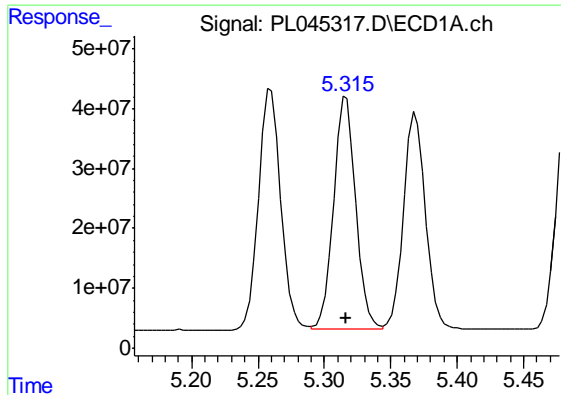
#25 Chlordane-3

R.T.: 5.260 min
Delta R.T.: -0.002 min
Response: 463899608
Conc: 404.44 ng/ml



#25 Chlordane-3

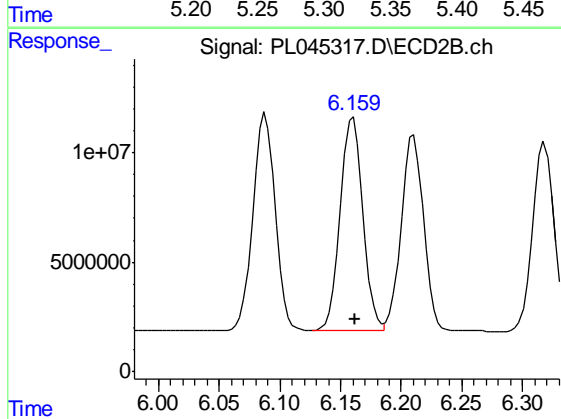
R.T.: 6.088 min
Delta R.T.: 0.000 min
Response: 126659502
Conc: 325.08 ng/ml



#26 Chlordane-4

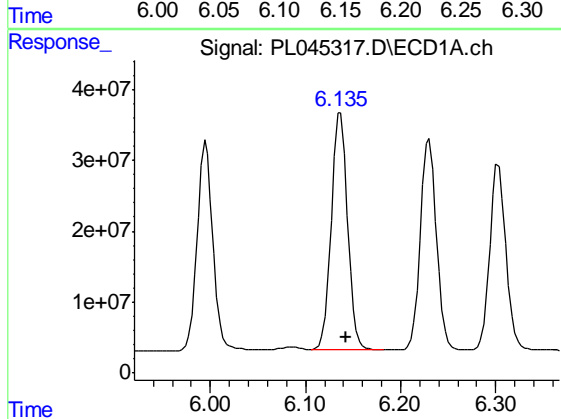
R.T.: 5.316 min
 Delta R.T.: 0.000 min
 Response: 456444704
 Conc: 430.59 ng/ml

Instrument :
 ECD_L
 ClientSampleId :
 B-1(17-18)MSD



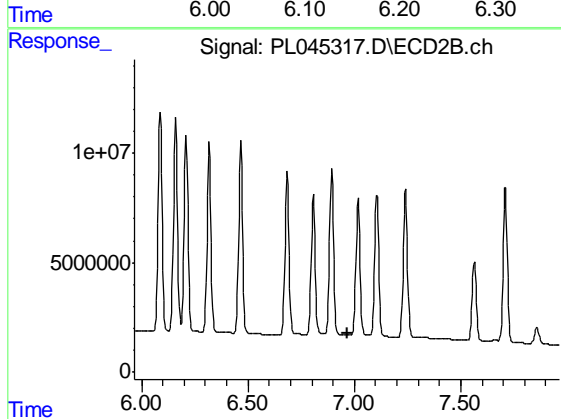
#26 Chlordane-4

R.T.: 6.160 min
 Delta R.T.: -0.002 min
 Response: 126756184
 Conc: 270.95 ng/ml



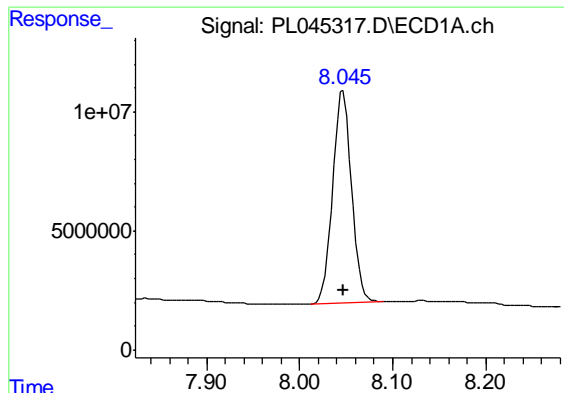
#27 Chlordane-5

R.T.: 6.137 min
 Delta R.T.: -0.006 min
 Response: 396425995
 Conc: 1147.91 ng/ml



#27 Chlordane-5

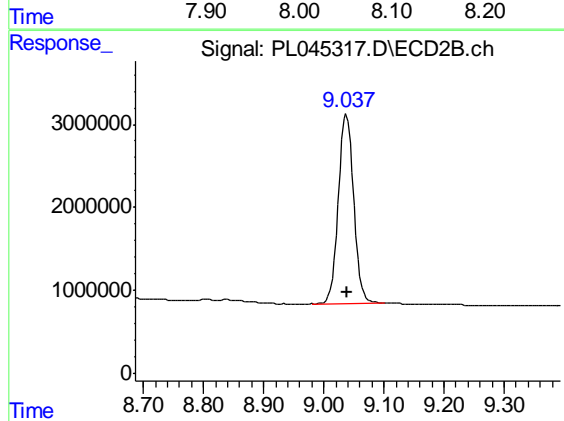
R.T.: 0.000 min
 Exp R.T. : 6.966 min
 Response: 0
 Conc: N.D.



#28 Decachlorobiphenyl

R.T.: 8.047 min
Delta R.T.: 0.000 min
Response: 125380331
Conc: 14.98 ng/ml

Instrument :
ECD_L
ClientSampleId :
B-1(17-18)MSD



#28 Decachlorobiphenyl

R.T.: 9.038 min
Delta R.T.: 0.000 min
Response: 40489286
Conc: 17.72 ng/ml