

Data Path : Z:\pestpcbsrv\HPCHEM1\ECD\_L\Data\PL030223\  
 Data File : PL081214.D  
 Signal(s) : Signal #1: ECD1A.ch Signal #2: ECD2B.ch  
 Acq On : 03 Mar 2023 00:37  
 Operator : AR\AJ  
 Sample : 01749-06  
 Misc :  
 ALS Vial : 37 Sample Multiplier: 1

Instrument :  
 ECD\_L  
 ClientSampleId :

Integration File signal 1: autoint1.e  
 Integration File signal 2: autoint2.e  
 Quant Time: Mar 03 01:59:51 2023  
 Quant Method : Z:\pestpcbsrv\HPCHEM1\ECD\_L\methods\PL030223.M  
 Quant Title : GC Extractables  
 QLast Update : Fri Mar 03 01:48:45 2023  
 Response via : Initial Calibration  
 Integrator: ChemStation

Volume Inj. : 1 µl  
 Signal #1 Phase : ZB-MR2 Signal #2 Phase: ZB-MR1  
 Signal #1 Info : 30M x 0.32mm x0.2 Signal #2 Info : 30M x 0.32mm x0.5µm

	Compound	RT#1	RT#2	Resp#1	Resp#2	ng/ml	ng/ml
-----							
System Monitoring Compounds							
1)	SA Tetrachlo...	3.335	2.665	16075509	14234848	7.440	7.034
28)	SA Decachlor...	8.762	7.791	17689243	22629782	11.603	11.814
Target Compounds							
3)	MA gamma-BHC...	0.000	3.513f	0	79030	N.D.	0.029 #
4)	MA Heptachlor	0.000	3.843	0	78326	N.D.	0.028 #
5)	MB Aldrin	0.000	4.093f	0	82352	N.D.	0.031 #
6)	B beta-BHC	4.308	0.000	1153352	0	0.838	N.D. #
7)	B delta-BHC	4.554	4.020	2025440	52591	0.729	0.021 #
8)	B Heptachlo...	5.458	4.628f	692760	99337	0.294	0.041 #
9)	A Endosulfan I	5.830	4.987	468138	43422	0.222	0.019 #
10)	B gamma-Chl...	5.719	4.839f	322395	65805	0.141	0.027 #
11)	B alpha-Chl...	5.796	4.909f	154800	131203	0.069	0.054
12)	B 4,4'-DDE	5.962	5.116	233358	68281	0.119	0.035 #
13)	MA Dieldrin	0.000	5.249	0	109110	N.D.	0.048 #
14)	MA Endrin	0.000	5.546f	0	19369	N.D.	0.010 #
17)	MA 4,4'-DDT	6.822f	5.914	151607	145811	0.096	0.091
23)	Chlordane-1	0.000	3.657	0	27170	N.D.	0.330 #
24)	Chlordane-2	0.000	4.203f	0	118936	N.D.	1.162 #
25)	Chlordane-3	5.719	4.839f	322395	65805	0.881	0.243 #
26)	Chlordane-4	5.796	4.909	154800	131203	0.352	0.467 #
27)	Chlordane-5	6.618f	0.000	529950	0	7.032	N.D. #

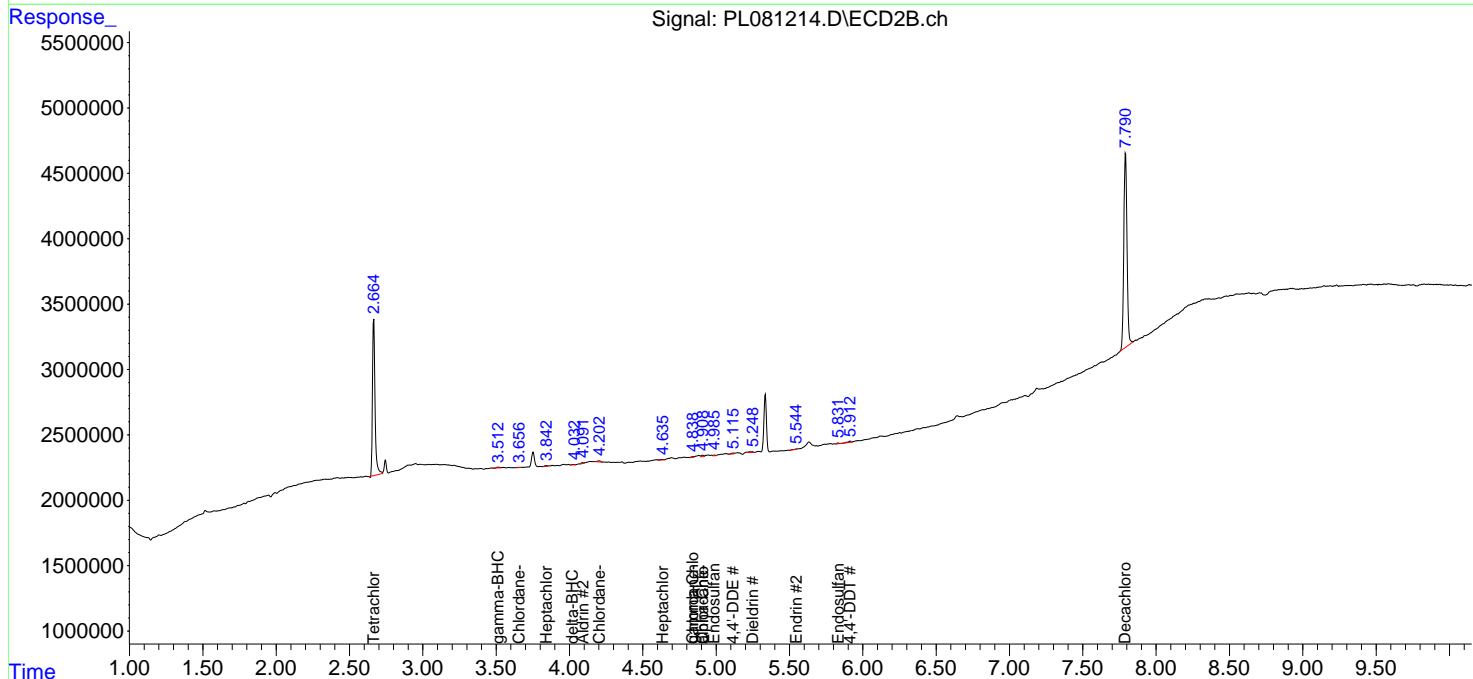
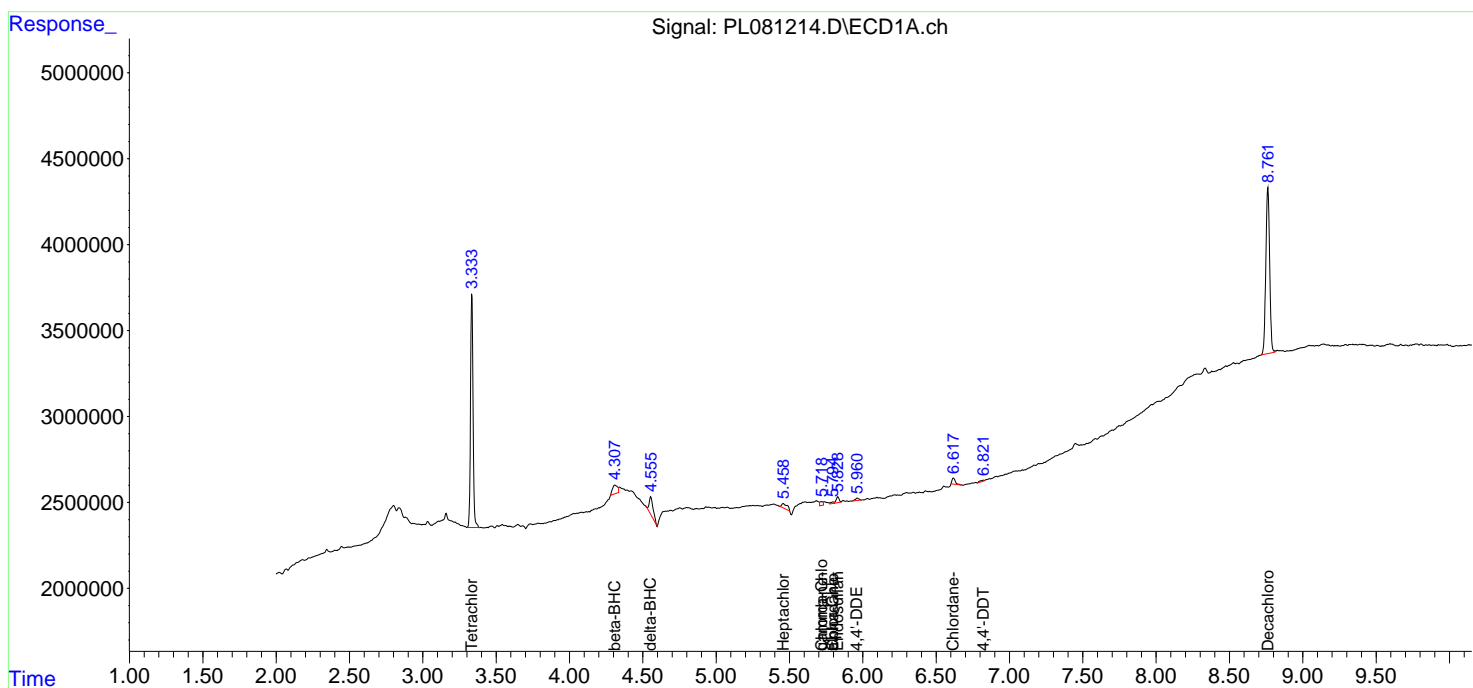
(f)=RT Delta > 1/2 Window (#)=Amounts differ by > 25% (m)=manual int.

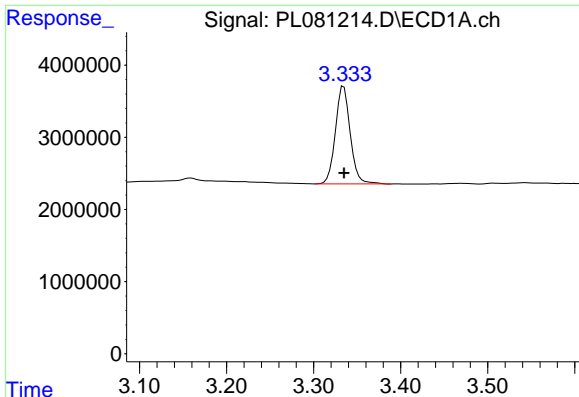
Data Path : Z:\pestpcbsrv\HPCHEM1\ECD\_L\Data\PL030223\  
 Data File : PL081214.D  
 Signal(s) : Signal #1: ECD1A.ch Signal #2: ECD2B.ch  
 Acq On : 03 Mar 2023 00:37  
 Operator : AR\AJ  
 Sample : 01749-06  
 Misc :  
 ALS Vial : 37 Sample Multiplier: 1

Instrument :  
 ECD\_L  
 ClientSampleId :

Integration File signal 1: autoint1.e  
 Integration File signal 2: autoint2.e  
 Quant Time: Mar 03 01:59:51 2023  
 Quant Method : Z:\pestpcbsrv\HPCHEM1\ECD\_L\methods\PL030223.M  
 Quant Title : GC Extractables  
 QLast Update : Fri Mar 03 01:48:45 2023  
 Response via : Initial Calibration  
 Integrator: ChemStation

Volume Inj. : 1 µl  
 Signal #1 Phase : ZB-MR2 Signal #2 Phase: ZB-MR1  
 Signal #1 Info : 30M x 0.32mm x0.2 Signal #2 Info : 30M x 0.32mm x0.5µm

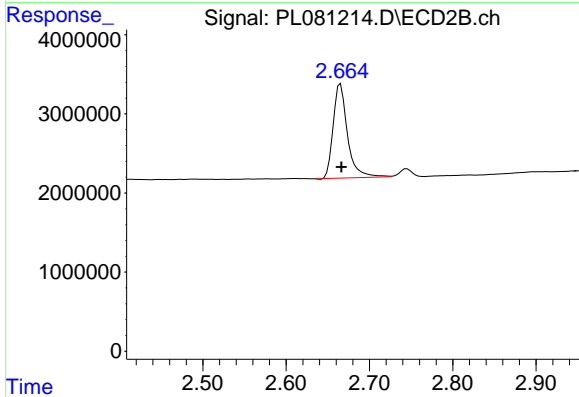




#1 Tetrachloro-m-xylene

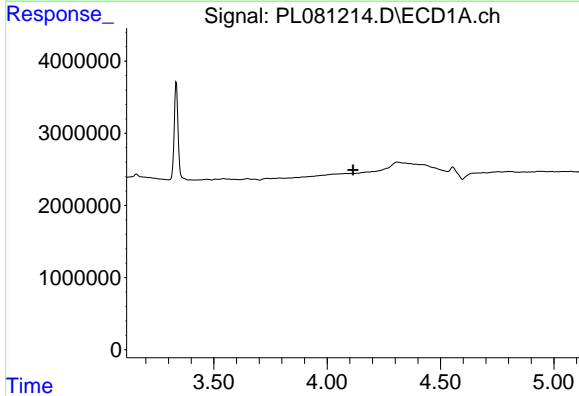
R.T.: 3.335 min  
 Delta R.T.: 0.000 min  
 Response: 16075509  
 Conc: 7.44 ng/ml

Instrument :  
 ECD\_L  
 ClientSampleId :



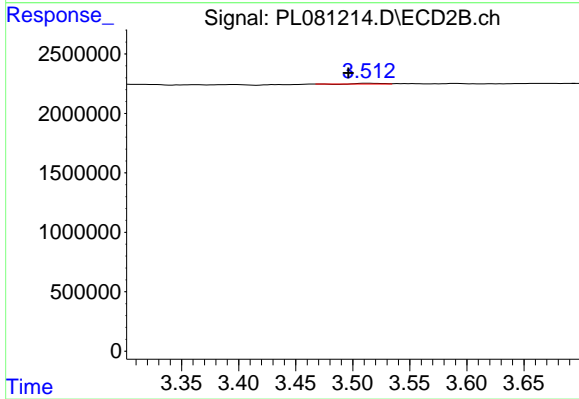
#1 Tetrachloro-m-xylene

R.T.: 2.665 min  
 Delta R.T.: -0.001 min  
 Response: 14234848  
 Conc: 7.03 ng/ml



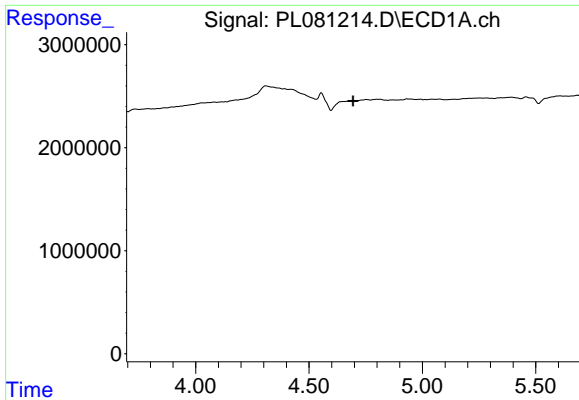
#3 gamma-BHC (Lindane)

R.T.: 0.000 min  
 Exp R.T. : 4.114 min  
 Response: 0  
 Conc: N.D.



#3 gamma-BHC (Lindane)

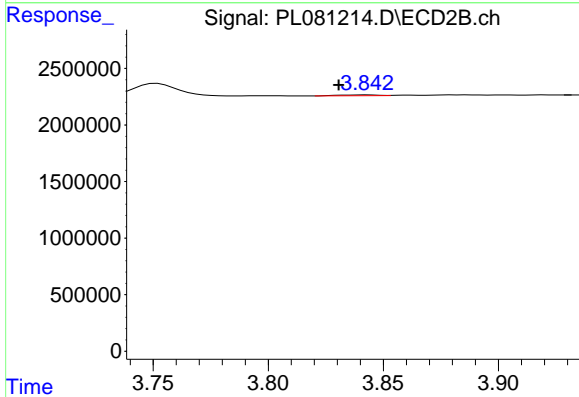
R.T.: 3.513 min  
 Delta R.T.: 0.017 min  
 Response: 79030  
 Conc: 0.03 ng/ml



#4 Heptachlor

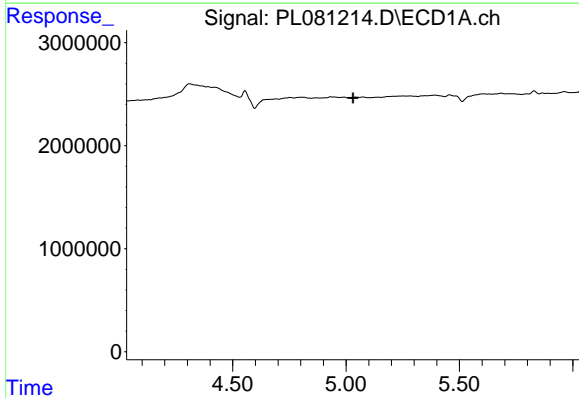
R.T.: 0.000 min  
 Exp R.T.: 4.694 min  
 Response: 0  
 Conc: N.D.

Instrument :  
 ECD\_L  
 ClientSampleId :



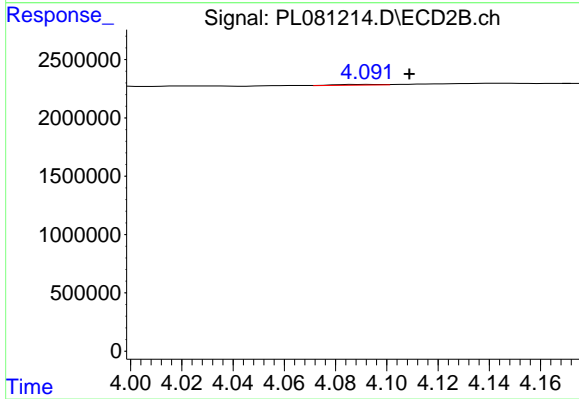
#4 Heptachlor

R.T.: 3.843 min  
 Delta R.T.: 0.013 min  
 Response: 78326  
 Conc: 0.03 ng/ml



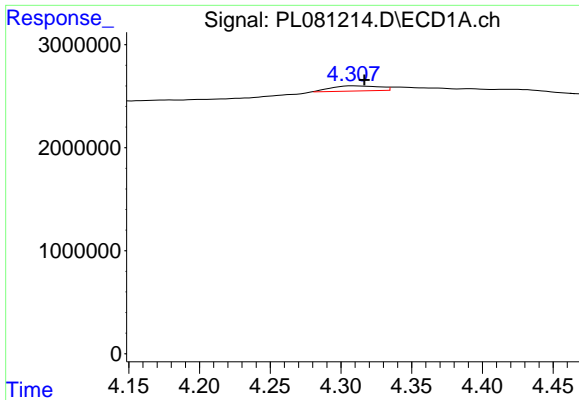
#5 Aldrin

R.T.: 0.000 min  
 Exp R.T.: 5.032 min  
 Response: 0  
 Conc: N.D.



#5 Aldrin

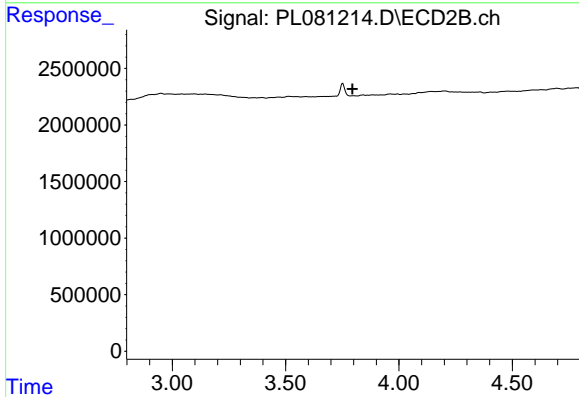
R.T.: 4.093 min  
 Delta R.T.: -0.016 min  
 Response: 82352  
 Conc: 0.03 ng/ml



#6 beta-BHC

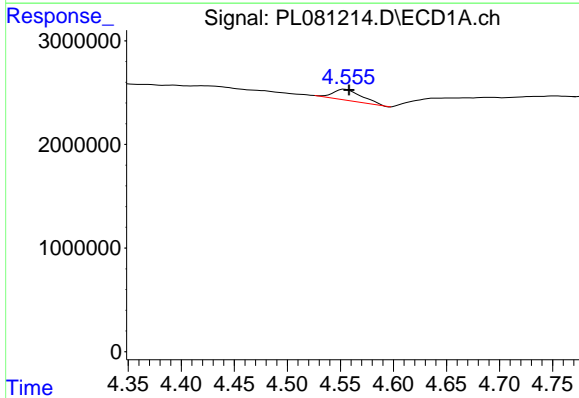
R.T.: 4.308 min  
 Delta R.T.: -0.008 min  
 Response: 1153352  
 Conc: 0.84 ng/ml

Instrument :  
 ECD\_L  
 ClientSampleId :



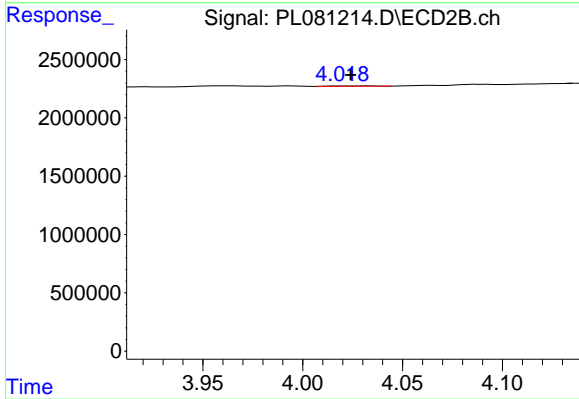
#6 beta-BHC

R.T.: 0.000 min  
 Exp R.T. : 3.795 min  
 Response: 0  
 Conc: N.D.



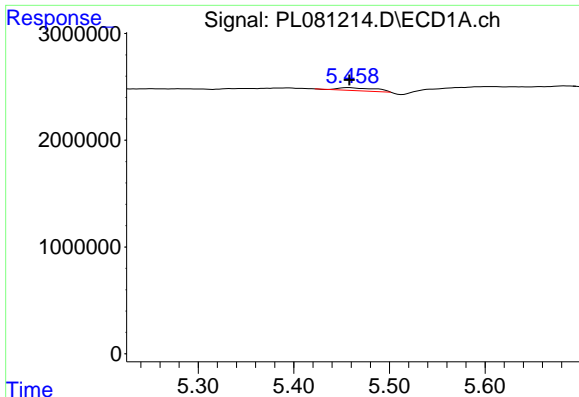
#7 delta-BHC

R.T.: 4.554 min  
 Delta R.T.: -0.004 min  
 Response: 2025440  
 Conc: 0.73 ng/ml



#7 delta-BHC

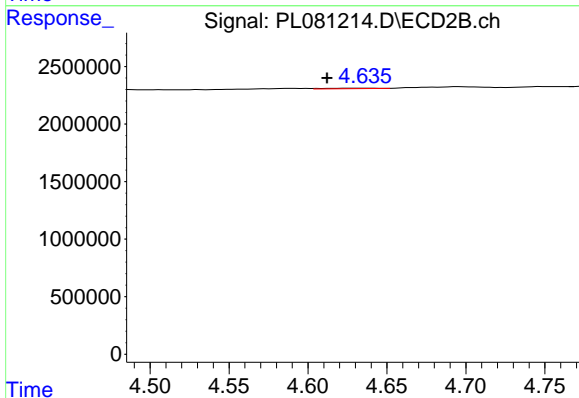
R.T.: 4.020 min  
 Delta R.T.: -0.004 min  
 Response: 52591  
 Conc: 0.02 ng/ml



#8 Heptachlor epoxide

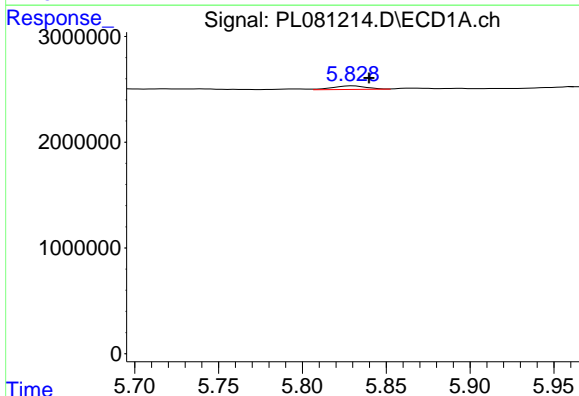
R.T.: 5.458 min  
 Delta R.T.: 0.000 min  
 Response: 692760  
 Conc: 0.29 ng/ml

Instrument :  
 ECD\_L  
 ClientSampleId :



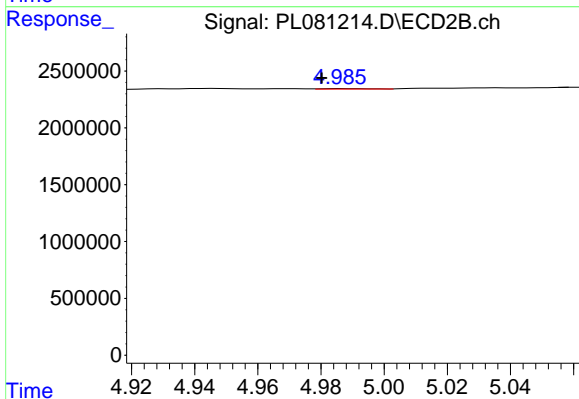
#8 Heptachlor epoxide

R.T.: 4.628 min  
 Delta R.T.: 0.016 min  
 Response: 99337  
 Conc: 0.04 ng/ml



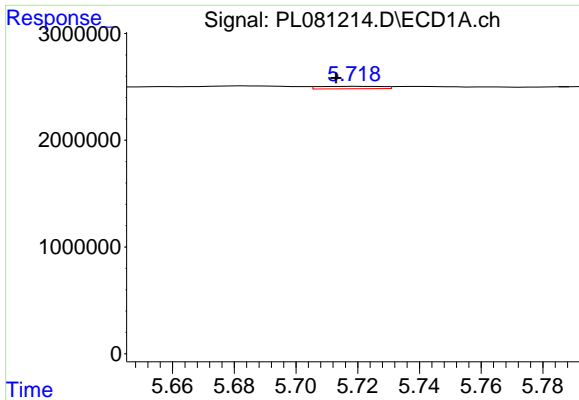
#9 Endosulfan I

R.T.: 5.830 min  
 Delta R.T.: -0.009 min  
 Response: 468138  
 Conc: 0.22 ng/ml



#9 Endosulfan I

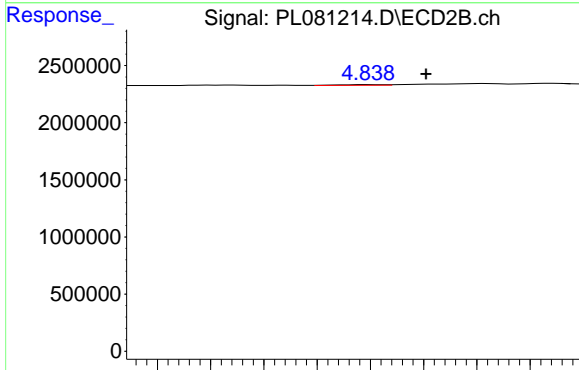
R.T.: 4.987 min  
 Delta R.T.: 0.007 min  
 Response: 43422  
 Conc: 0.02 ng/ml



#10 gamma-Chlordane

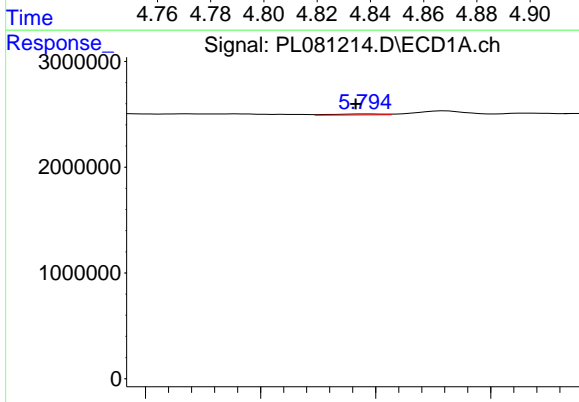
R.T.: 5.719 min  
 Delta R.T.: 0.006 min  
 Response: 322395  
 Conc: 0.14 ng/ml

Instrument :  
 ECD\_L  
 ClientSampleId :



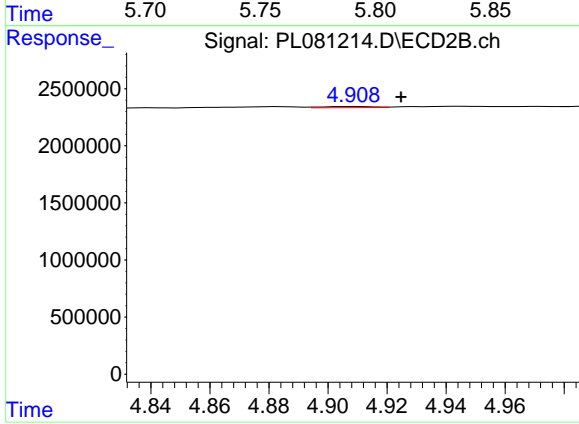
#10 gamma-Chlordane

R.T.: 4.839 min  
 Delta R.T.: -0.022 min  
 Response: 65805  
 Conc: 0.03 ng/ml



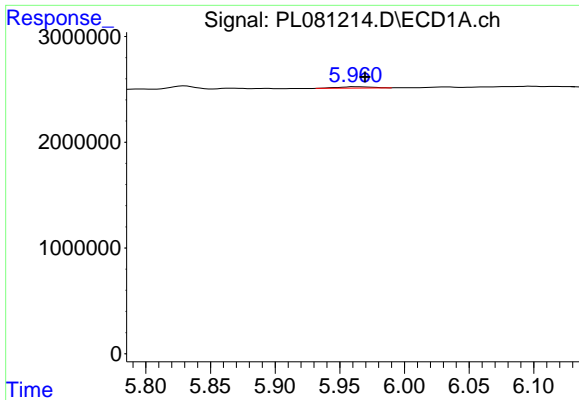
#11 alpha-Chlordane

R.T.: 5.796 min  
 Delta R.T.: 0.004 min  
 Response: 154800  
 Conc: 0.07 ng/ml



#11 alpha-Chlordane

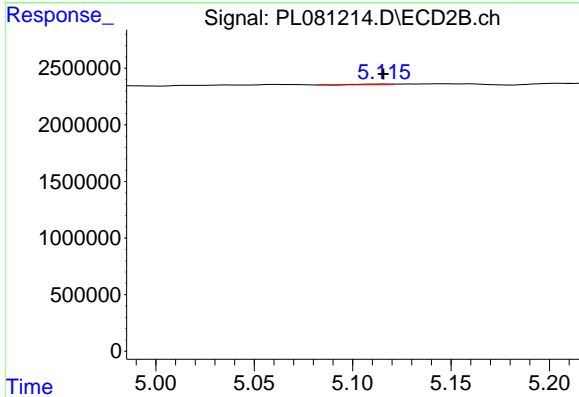
R.T.: 4.909 min  
 Delta R.T.: -0.016 min  
 Response: 131203  
 Conc: 0.05 ng/ml



#12 4,4'-DDE

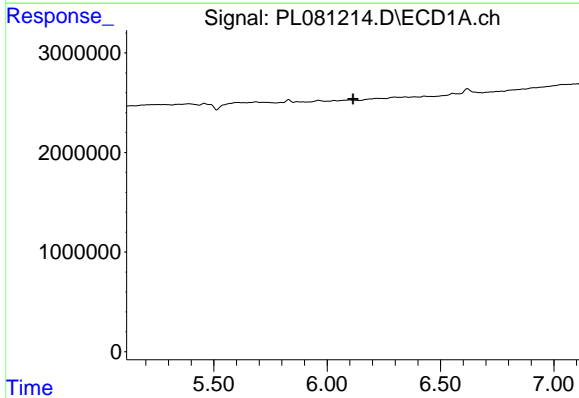
R.T.: 5.962 min  
 Delta R.T.: -0.007 min  
 Response: 233358  
 Conc: 0.12 ng/ml

Instrument :  
 ECD\_L  
 ClientSampleId :



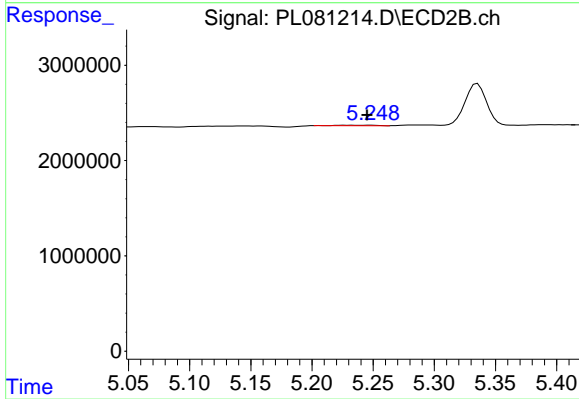
#12 4,4'-DDE

R.T.: 5.116 min  
 Delta R.T.: 0.000 min  
 Response: 68281  
 Conc: 0.03 ng/ml



#13 Dieldrin

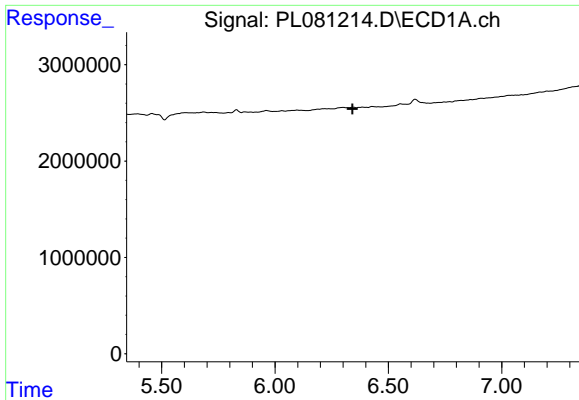
R.T.: 0.000 min  
 Exp R.T. : 6.114 min  
 Response: 0  
 Conc: N.D.



#13 Dieldrin

R.T.: 5.249 min  
 Delta R.T.: 0.004 min  
 Response: 109110  
 Conc: 0.05 ng/ml

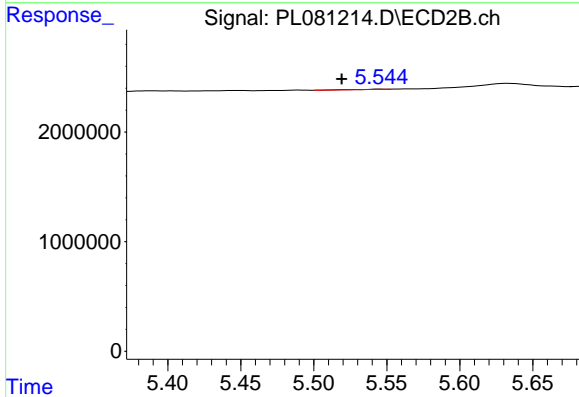




#14 Endrin

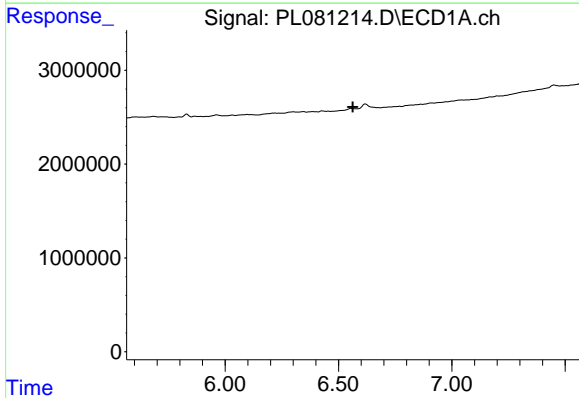
R.T.: 0.000 min  
 Exp R.T.: 6.342 min  
 Response: 0  
 Conc: N.D.

Instrument :  
 ECD\_L  
 ClientSampleId :



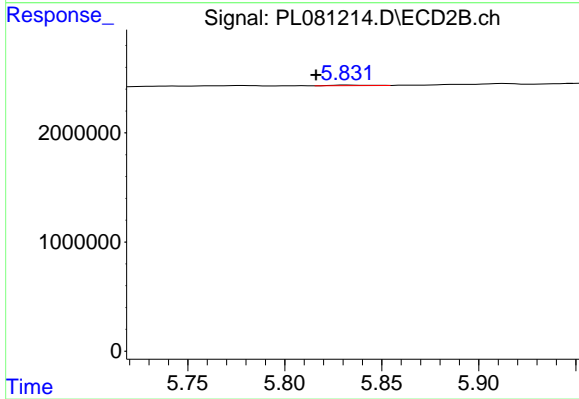
#14 Endrin

R.T.: 5.546 min  
 Delta R.T.: 0.027 min  
 Response: 19369  
 Conc: 0.01 ng/ml



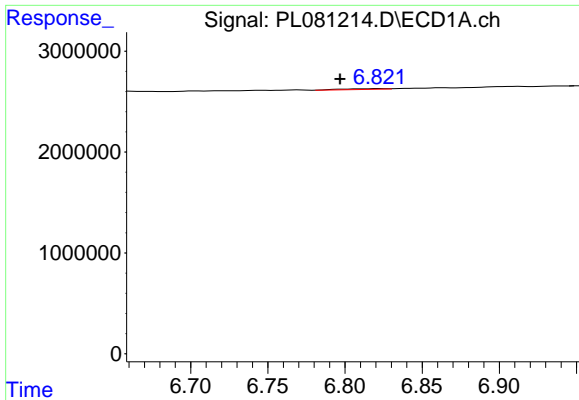
#15 Endosulfan II

R.T.: 6.553 min  
 Delta R.T.: -0.010 min  
 Response: -201992  
 Conc: N.D.



#15 Endosulfan II

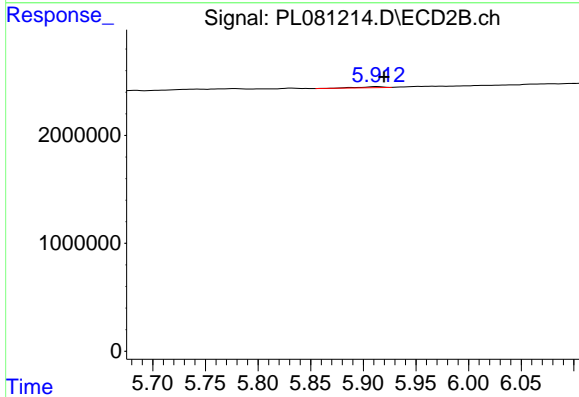
R.T.: 5.832 min  
 Delta R.T.: 0.016 min  
 Response: 59845  
 Conc: 0.03 ng/ml



#17 4,4'-DDT

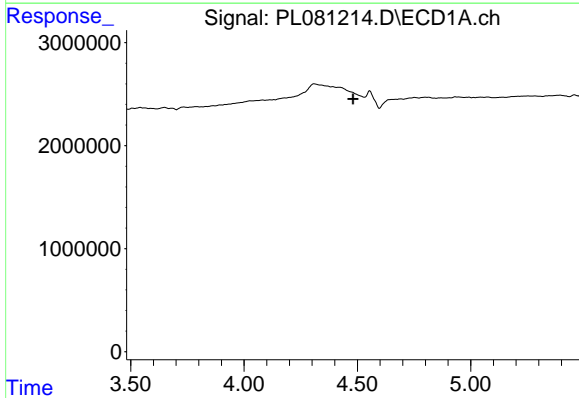
R.T.: 6.822 min  
 Delta R.T.: 0.025 min  
 Response: 151607  
 Conc: 0.10 ng/ml

Instrument :  
 ECD\_L  
 ClientSampleId :



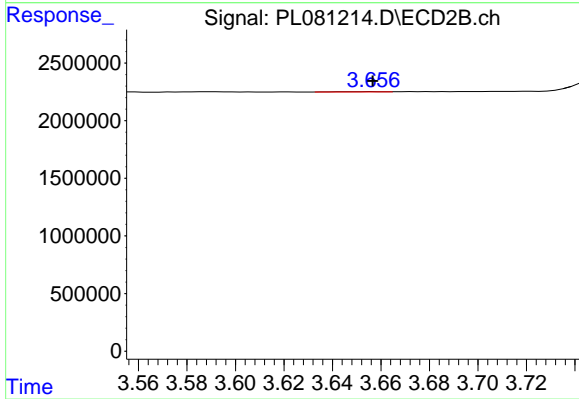
#17 4,4'-DDT

R.T.: 5.914 min  
 Delta R.T.: -0.006 min  
 Response: 145811  
 Conc: 0.09 ng/ml



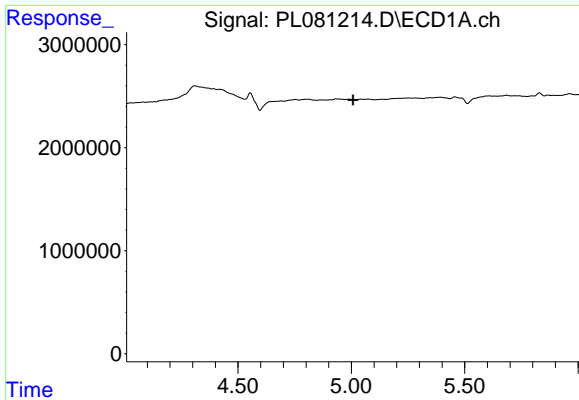
#23 Chlordane-1

R.T.: 0.000 min  
 Exp R.T. : 4.481 min  
 Response: 0  
 Conc: N.D.



#23 Chlordane-1

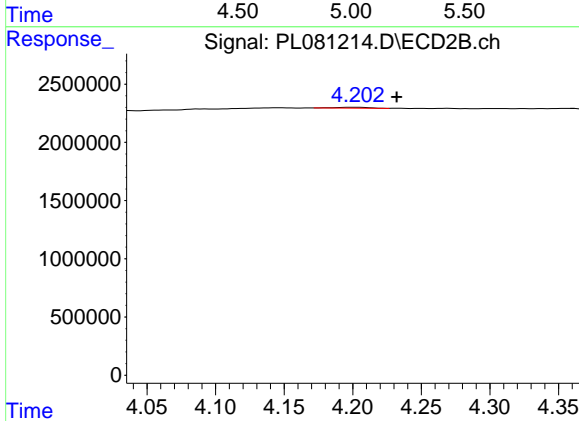
R.T.: 3.657 min  
 Delta R.T.: 0.000 min  
 Response: 27170  
 Conc: 0.33 ng/ml



#24 Chlordane-2

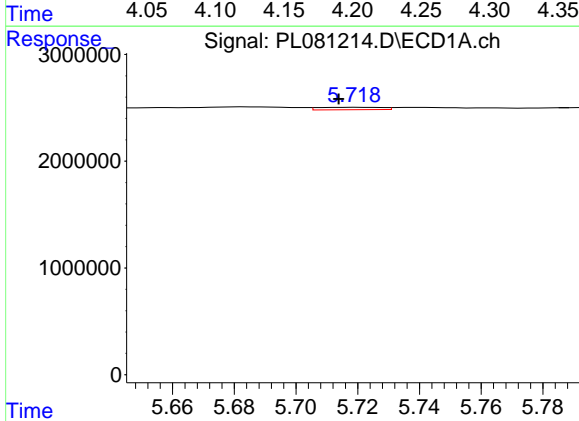
R.T.: 0.000 min  
 Exp R.T.: 5.008 min  
 Response: 0  
 Conc: N.D.

Instrument :  
 ECD\_L  
 ClientSampleId :



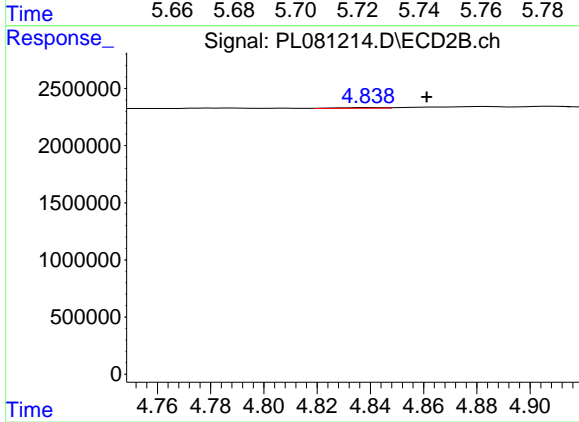
#24 Chlordane-2

R.T.: 4.203 min  
 Delta R.T.: -0.029 min  
 Response: 118936  
 Conc: 1.16 ng/ml



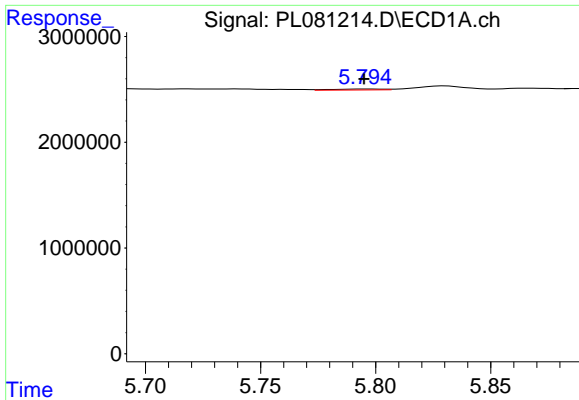
#25 Chlordane-3

R.T.: 5.719 min  
 Delta R.T.: 0.005 min  
 Response: 322395  
 Conc: 0.88 ng/ml



#25 Chlordane-3

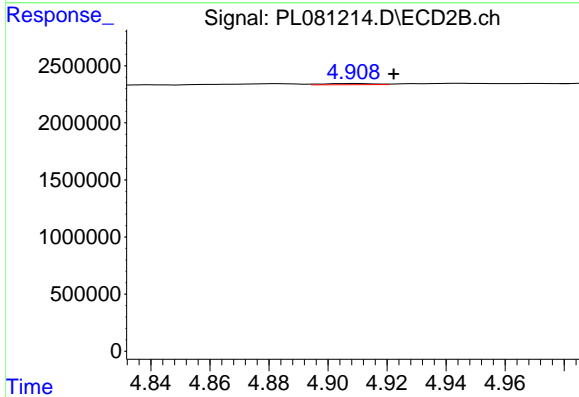
R.T.: 4.839 min  
 Delta R.T.: -0.022 min  
 Response: 65805  
 Conc: 0.24 ng/ml



#26 Chlordane-4

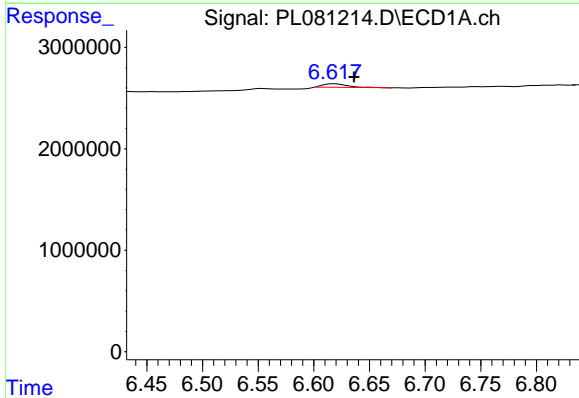
R.T.: 5.796 min  
 Delta R.T.: 0.000 min  
 Response: 154800  
 Conc: 0.35 ng/ml

Instrument :  
 ECD\_L  
 ClientSampleId :



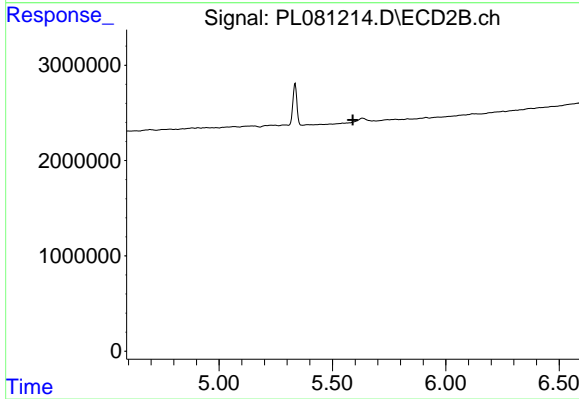
#26 Chlordane-4

R.T.: 4.909 min  
 Delta R.T.: -0.014 min  
 Response: 131203  
 Conc: 0.47 ng/ml



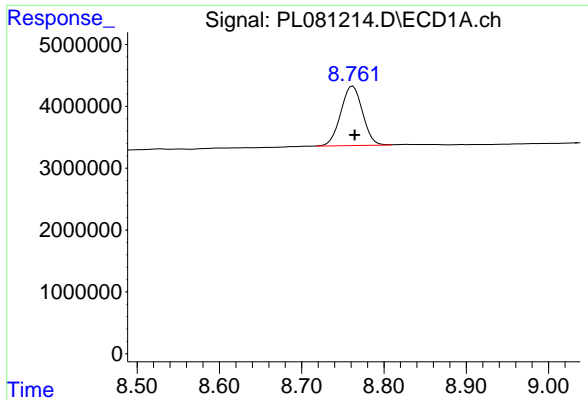
#27 Chlordane-5

R.T.: 6.618 min  
 Delta R.T.: -0.018 min  
 Response: 529950  
 Conc: 7.03 ng/ml



#27 Chlordane-5

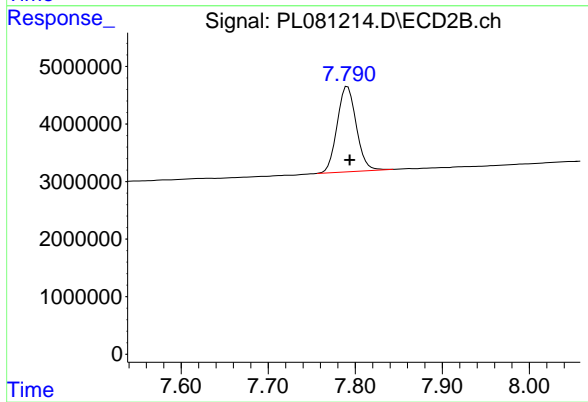
R.T.: 0.000 min  
 Exp R.T. : 5.589 min  
 Response: 0  
 Conc: N.D.



#28 Decachlorobiphenyl

R.T.: 8.762 min  
Delta R.T.: -0.002 min  
Response: 17689243  
Conc: 11.60 ng/ml

Instrument :  
ECD\_L  
ClientSampleId :



#28 Decachlorobiphenyl

R.T.: 7.791 min  
Delta R.T.: -0.003 min  
Response: 22629782  
Conc: 11.81 ng/ml