

Data Path : Z:\pestpcbsrv\HPCHEM1\ECD_L\Data\PL030223\
 Data File : PL081221.D
 Signal(s) : Signal #1: ECD1A.ch Signal #2: ECD2B.ch
 Acq On : 03 Mar 2023 02:15
 Operator : AR\AJ
 Sample : 01749-13
 Misc :
 ALS Vial : 44 Sample Multiplier: 1

Instrument :
 ECD_L
 ClientSampleId :
 CF-15

Integration File signal 1: autoint1.e
 Integration File signal 2: autoint2.e
 Quant Time: Mar 03 04:49:20 2023
 Quant Method : Z:\pestpcbsrv\HPCHEM1\ECD_L\methods\PL030223.M
 Quant Title : GC Extractables
 QLast Update : Fri Mar 03 01:48:45 2023
 Response via : Initial Calibration
 Integrator: ChemStation

Volume Inj. : 1 µl
 Signal #1 Phase : ZB-MR2 Signal #2 Phase: ZB-MR1
 Signal #1 Info : 30M x 0.32mm x0.2 Signal #2 Info : 30M x 0.32mm x0.5µm

Compound	RT#1	RT#2	Resp#1	Resp#2	ng/ml	ng/ml

System Monitoring Compounds						
1) SA Tetrachlo...	3.334	2.665	15659436	14127611	7.248	6.981
28) SA Decachlor...	8.760	7.791	18810904	24042781	12.339	12.551

Target Compounds

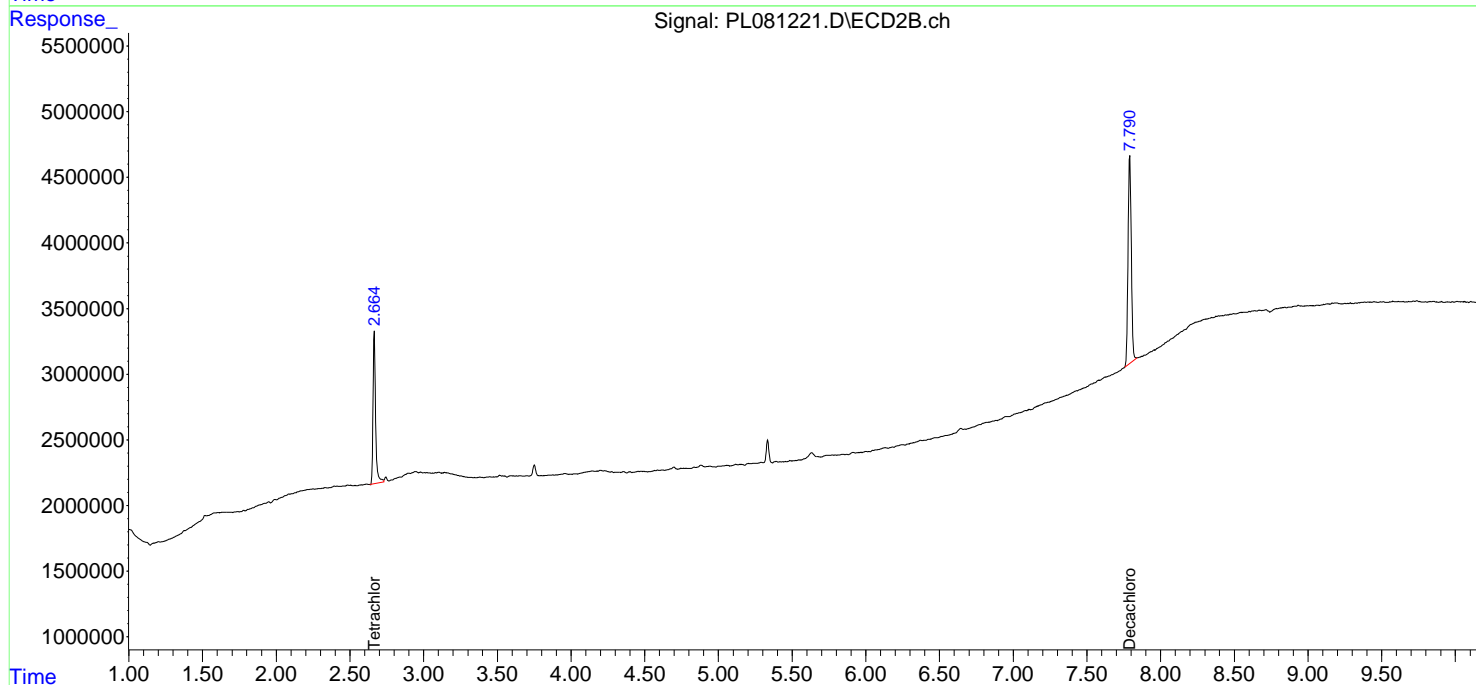
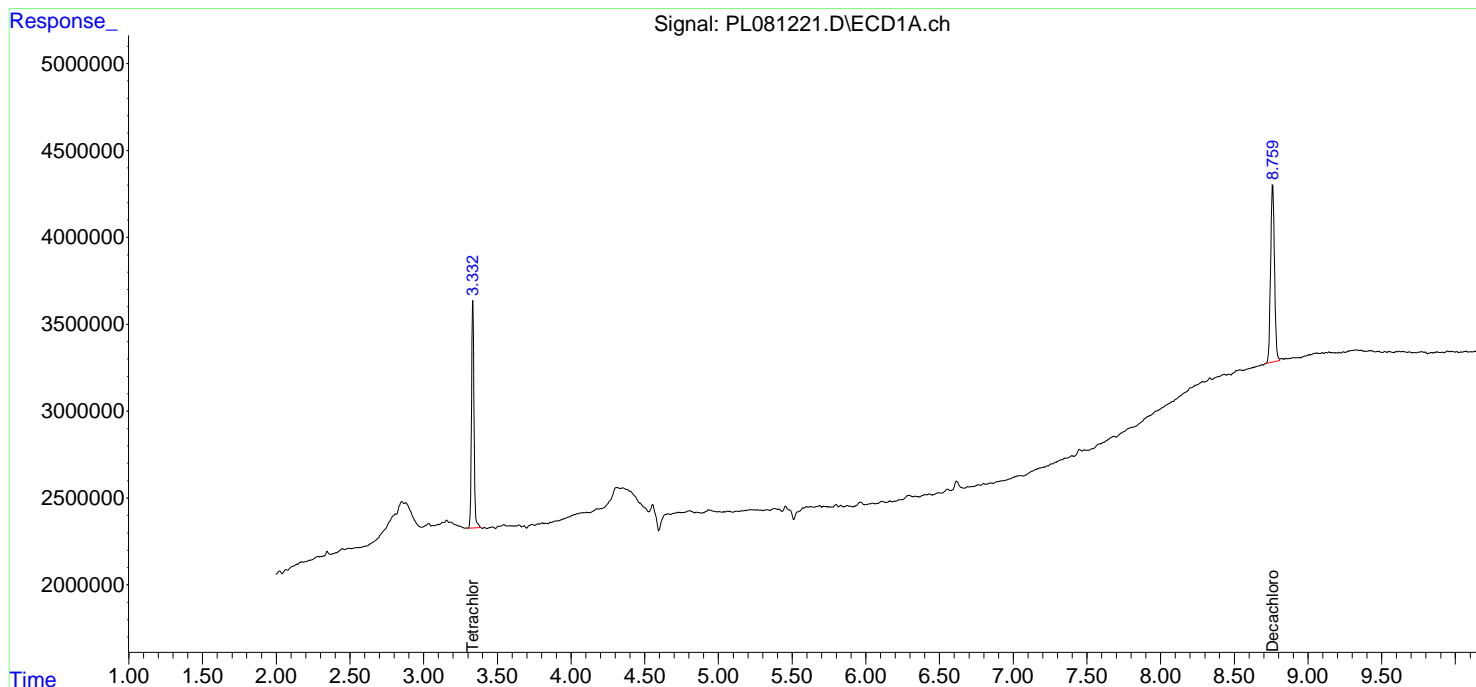
(f)=RT Delta > 1/2 Window (#)=Amounts differ by > 25% (m)=manual int.

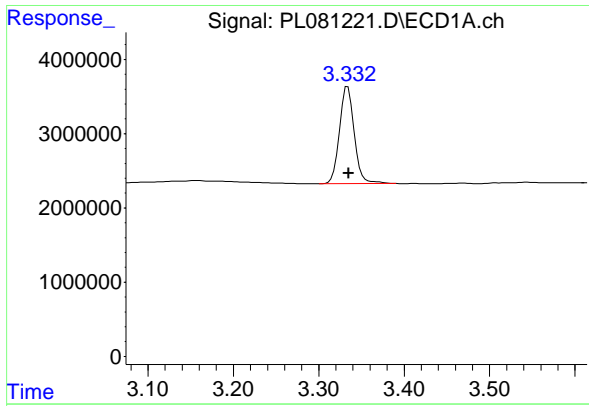
Data Path : Z:\pestpcbsrv\HPCHEM1\ECD_L\Data\PL030223\
 Data File : PL081221.D
 Signal(s) : Signal #1: ECD1A.ch Signal #2: ECD2B.ch
 Acq On : 03 Mar 2023 02:15
 Operator : AR\AJ
 Sample : 01749-13
 Misc :
 ALS Vial : 44 Sample Multiplier: 1

Instrument :
 ECD_L
 ClientSampleId :
 CF-15

Integration File signal 1: autoint1.e
 Integration File signal 2: autoint2.e
 Quant Time: Mar 03 04:49:20 2023
 Quant Method : Z:\pestpcbsrv\HPCHEM1\ECD_L\methods\PL030223.M
 Quant Title : GC Extractables
 QLast Update : Fri Mar 03 01:48:45 2023
 Response via : Initial Calibration
 Integrator: ChemStation

Volume Inj. : 1 µl
 Signal #1 Phase : ZB-MR2 Signal #2 Phase: ZB-MR1
 Signal #1 Info : 30M x 0.32mm x0.2 Signal #2 Info : 30M x 0.32mm x0.5µm

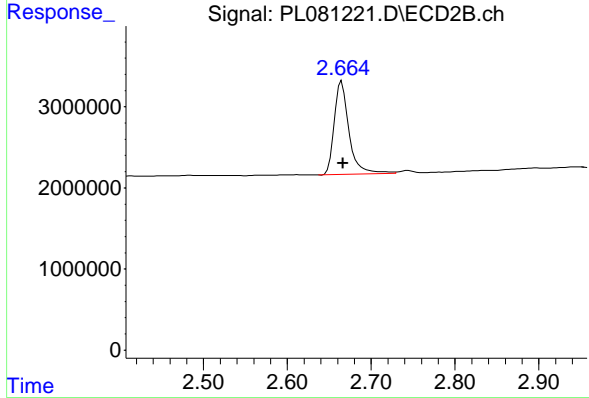




#1 Tetrachloro-m-xylene

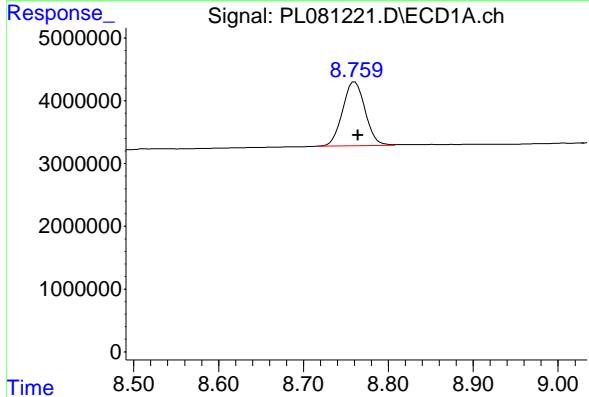
R.T.: 3.334 min
Delta R.T.: -0.001 min
Response: 15659436
Conc: 7.25 ng/ml

Instrument :
ECD_L
ClientSampleId :
CF-15



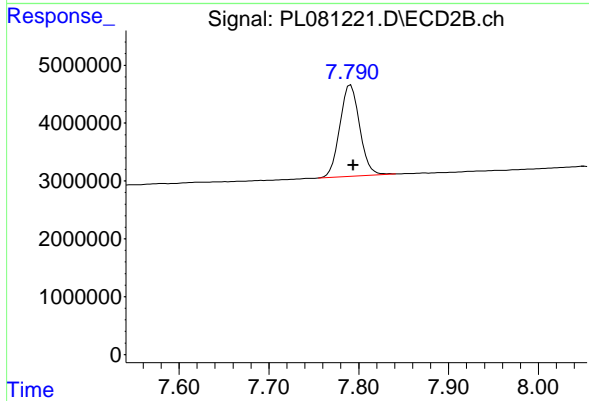
#1 Tetrachloro-m-xylene

R.T.: 2.665 min
Delta R.T.: -0.002 min
Response: 14127611
Conc: 6.98 ng/ml



#28 Decachlorobiphenyl

R.T.: 8.760 min
Delta R.T.: -0.004 min
Response: 18810904
Conc: 12.34 ng/ml



#28 Decachlorobiphenyl

R.T.: 7.791 min
Delta R.T.: -0.003 min
Response: 24042781
Conc: 12.55 ng/ml