

Data Path : Z:\pestpcbsrv\HPCHEM1\ECD\_L\Data\PL030320\  
 Data File : PL056998.D  
 Signal(s) : Signal #1: ECD1A.ch Signal #2: ECD2B.ch  
 Acq On : 04 Mar 2020 04:48  
 Operator : AJ\MA  
 Sample : L1743-16  
 Misc :  
 ALS Vial : 32 Sample Multiplier: 1

Integration File signal 1: autoint1.e  
 Integration File signal 2: autoint2.e  
 Quant Time: Mar 04 06:30:59 2020  
 Quant Method : Z:\pestpcbsrv\HPCHEM1\ECD\_L\methods\PL030320.M  
 Quant Title : GC Extractables  
 QLast Update : Wed Mar 04 03:55:01 2020  
 Response via : Initial Calibration  
 Integrator: ChemStation

Volume Inj. : 1 µl  
 Signal #1 Phase : ZB-MR2 Signal #2 Phase: ZB-MR1  
 Signal #1 Info : 30M x 0.32mm x0.2 Signal #2 Info : 30M x 0.32mm x0.5µm

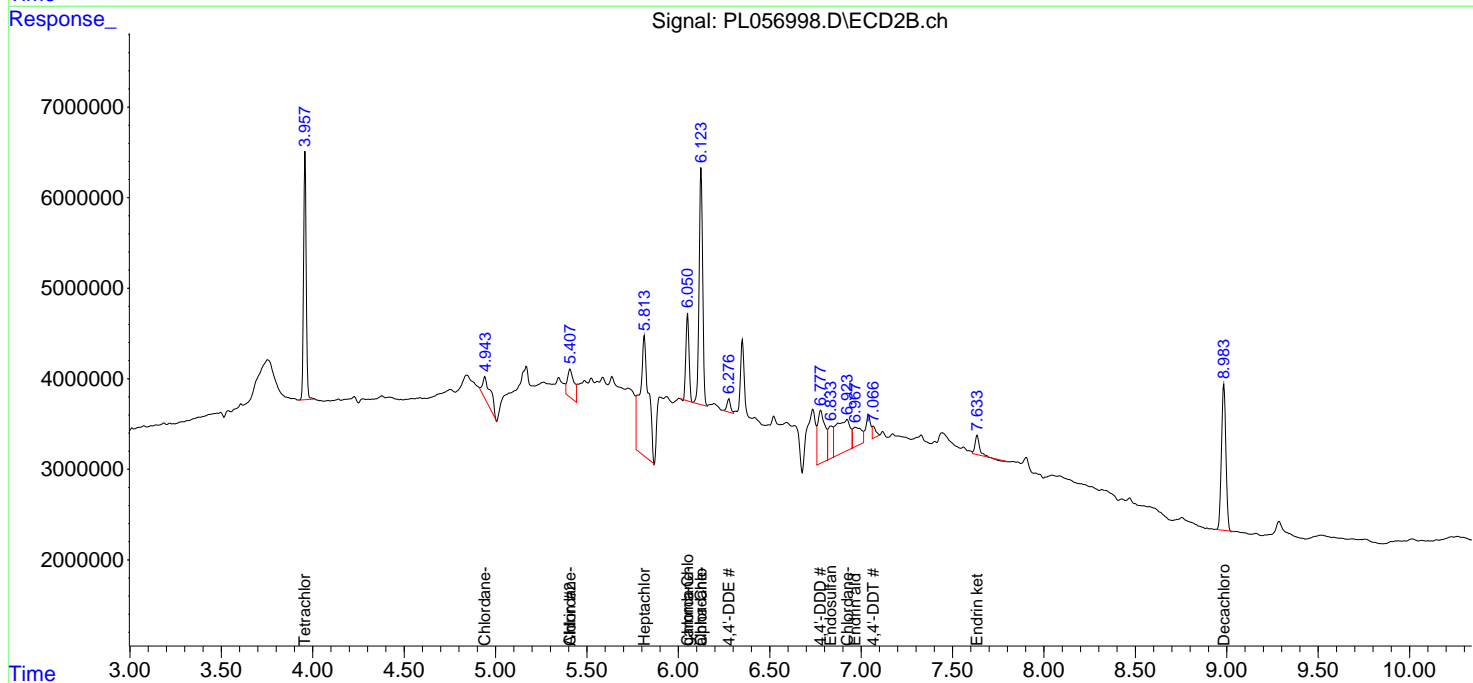
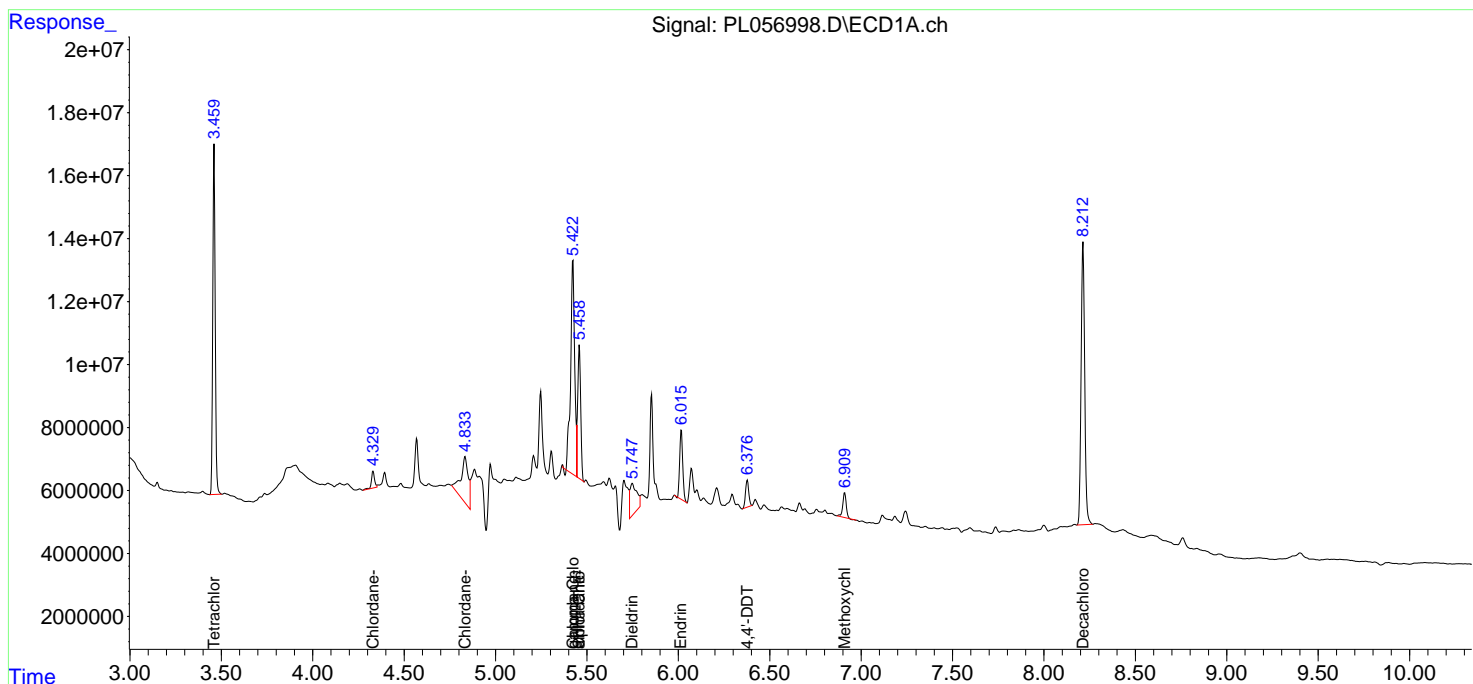
	Compound	RT#1	RT#2	Resp#1	Resp#2	ng/ml	ng/ml
-----							
System Monitoring Compounds							
1)	SA Tetrachlo...	3.461	3.958	104.2E6	27306616	12.231	12.799
28)	SA Decachlor...	8.214	8.984	123.7E6	27195754	12.799	12.800
Target Compounds							
5)	MB Aldrin	0.000	5.408f	0	7939291	N.D.	2.656 #
8)	B Heptachlo...	0.000	5.814	0	43577986	N.D.	15.726 #
10)	B gamma-Chl...	5.423f	6.051	104.7E6	11633468	8.426	3.886 #
11)	B alpha-Chl...	5.459	6.125	49008487	35357725	3.989	11.729 #
12)	B 4,4'-DDE	0.000	6.277	0	2014377	N.D.	0.710 #
13)	MA Dieldrin	5.748	0.000	25193743	0	2.061	N.D. #
14)	MA Endrin	6.016	0.000	25560533	0	2.349	N.D. #
15)	B Endosulfa...	0.000	6.835	0	6763359	N.D.	2.410 #
16)	A 4,4'-DDD	0.000	6.779	0	16370548	N.D.	6.720 #
17)	MA 4,4'-DDT	6.378	7.067	10621497	1748204	1.085	0.711 #
18)	B Endrin al...	0.000	6.969	0	6859000	N.D.	2.960 #
20)	A Methoxychlor	6.910	0.000	10524044	0	2.111	N.D. #
21)	B Endrin ke...	0.000	7.635f	0	3415883	N.D.	1.246 #
23)	Chlordane-1	4.331	4.942	6384872	8350677	21.006	104.114 #
24)	Chlordane-2	4.834	5.408	40948786	7939291	116.113	83.174 #
25)	Chlordane-3	5.423f	6.051	104.7E6	11633468	97.029	30.696 #
26)	Chlordane-4	5.459	6.125	49008487	35357725	53.328	77.110 #
27)	Chlordane-5	0.000	6.924	0	19680988	N.D.	235.899 #

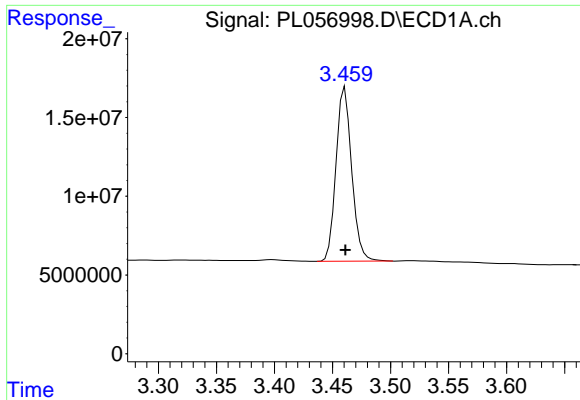
(f)=RT Delta > 1/2 Window (#)=Amounts differ by > 25% (m)=manual int.

Data Path : Z:\pestpcbsrv\HPCHEM1\ECD\_L\Data\PL030320\  
 Data File : PL056998.D  
 Signal(s) : Signal #1: ECD1A.ch Signal #2: ECD2B.ch  
 Acq On : 04 Mar 2020 04:48  
 Operator : AJ\MA  
 Sample : L1743-16  
 Misc :  
 ALS Vial : 32 Sample Multiplier: 1

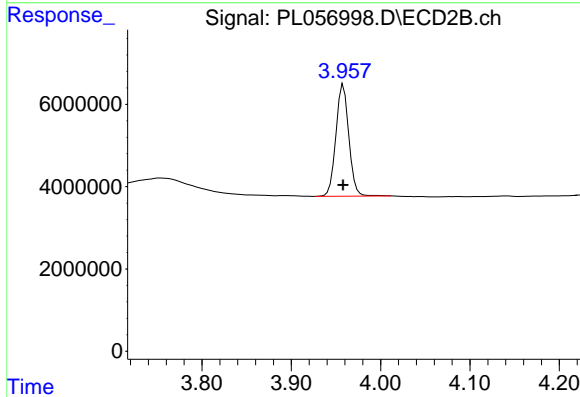
Integration File signal 1: autoint1.e  
 Integration File signal 2: autoint2.e  
 Quant Time: Mar 04 06:30:59 2020  
 Quant Method : Z:\pestpcbsrv\HPCHEM1\ECD\_L\methods\PL030320.M  
 Quant Title : GC Extractables  
 QLast Update : Wed Mar 04 03:55:01 2020  
 Response via : Initial Calibration  
 Integrator: ChemStation

Volume Inj. : 1 µl  
 Signal #1 Phase : ZB-MR2 Signal #2 Phase: ZB-MR1  
 Signal #1 Info : 30M x 0.32mm x0.2 Signal #2 Info : 30M x 0.32mm x0.5µm

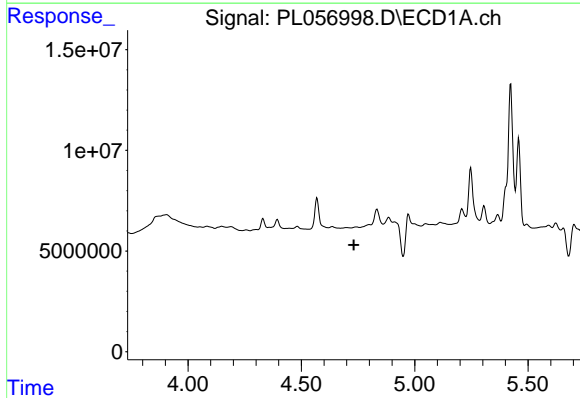




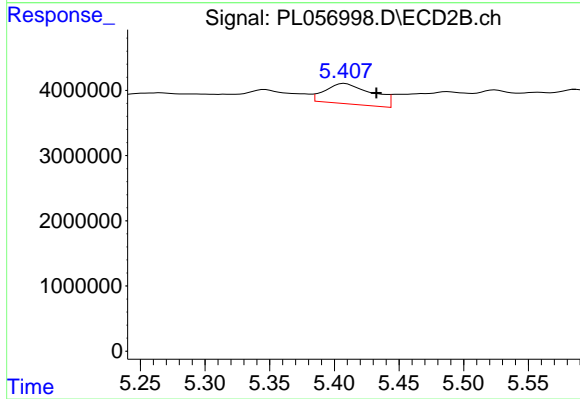
#1 Tetrachloro-m-xylene  
 R.T.: 3.461 min  
 Delta R.T.: 0.000 min  
 Response: 104236867  
 Conc: 12.23 ng/ml



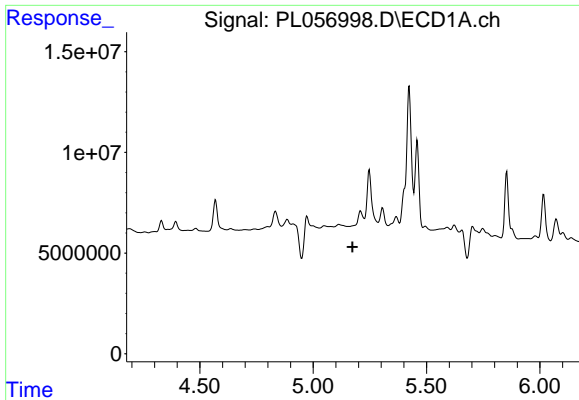
#1 Tetrachloro-m-xylene  
 R.T.: 3.958 min  
 Delta R.T.: 0.000 min  
 Response: 27306616  
 Conc: 12.80 ng/ml



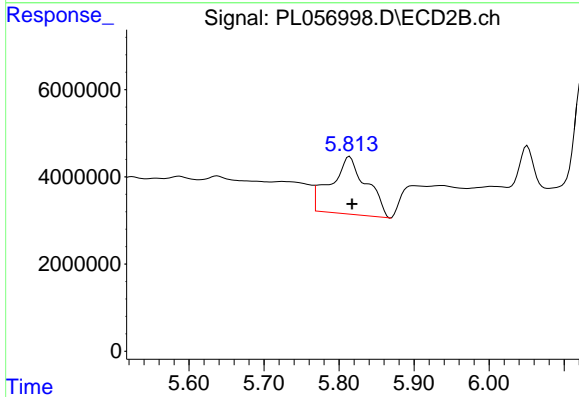
#5 Aldrin  
 R.T.: 0.000 min  
 Exp R.T. : 4.731 min  
 Response: 0  
 Conc: N.D.



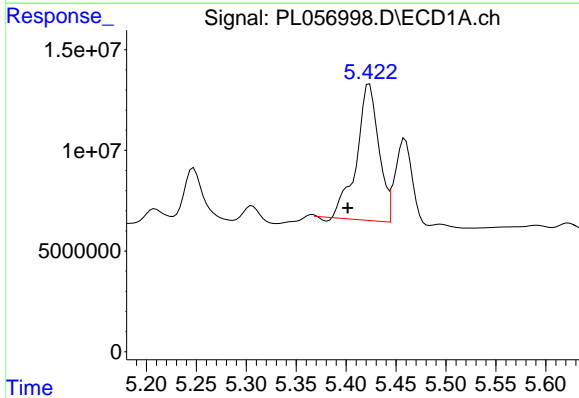
#5 Aldrin  
 R.T.: 5.408 min  
 Delta R.T.: -0.025 min  
 Response: 7939291  
 Conc: 2.66 ng/ml



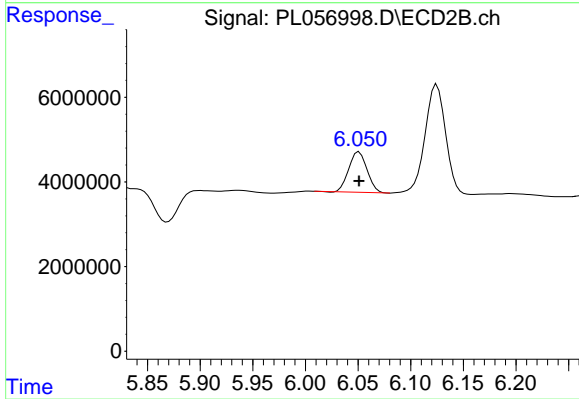
#8 Heptachlor epoxide  
 R.T.: 0.000 min  
 Exp R.T. : 5.174 min  
 Response: 0  
 Conc: N.D.



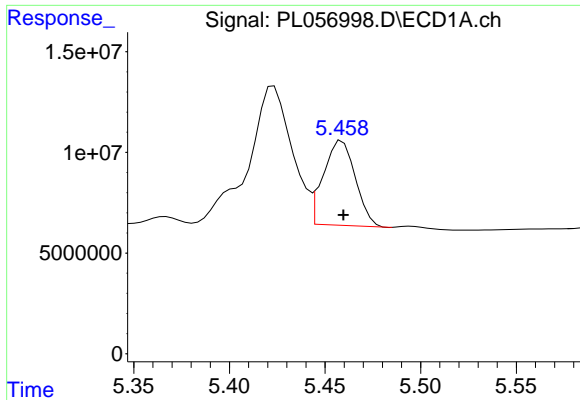
#8 Heptachlor epoxide  
 R.T.: 5.814 min  
 Delta R.T.: -0.003 min  
 Response: 43577986  
 Conc: 15.73 ng/ml



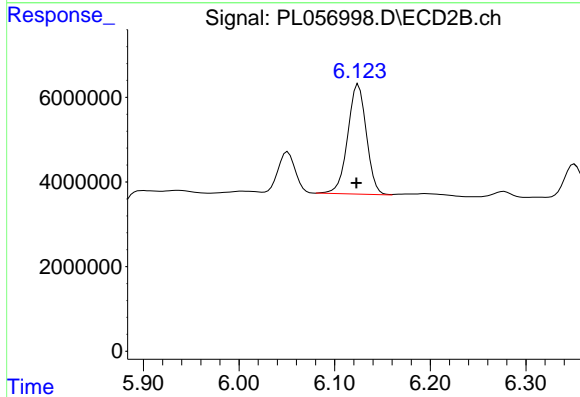
#10 gamma-Chlordane  
 R.T.: 5.423 min  
 Delta R.T.: 0.022 min  
 Response: 104658677  
 Conc: 8.43 ng/ml



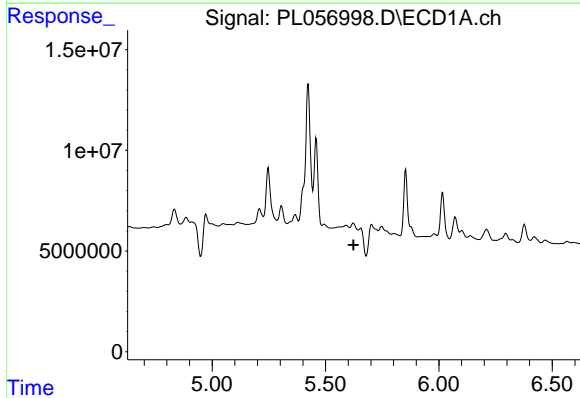
#10 gamma-Chlordane  
 R.T.: 6.051 min  
 Delta R.T.: 0.000 min  
 Response: 11633468  
 Conc: 3.89 ng/ml



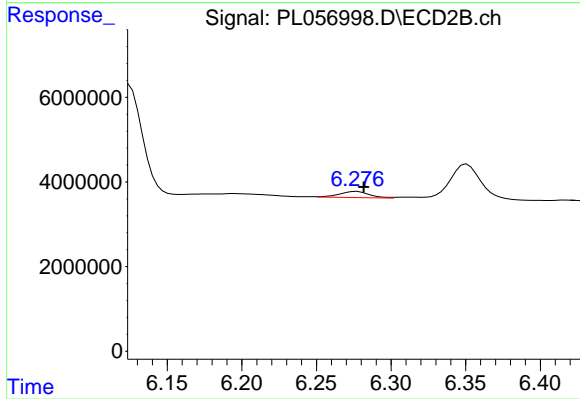
#11 alpha-Chlordane  
R.T.: 5.459 min  
Delta R.T.: 0.000 min  
Response: 49008487  
Conc: 3.99 ng/ml



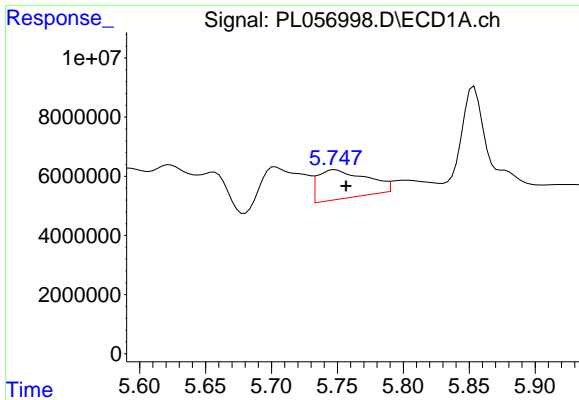
#11 alpha-Chlordane  
R.T.: 6.125 min  
Delta R.T.: 0.002 min  
Response: 35357725  
Conc: 11.73 ng/ml



#12 4,4'-DDE  
R.T.: 0.000 min  
Exp R.T. : 5.624 min  
Response: 0  
Conc: N.D.

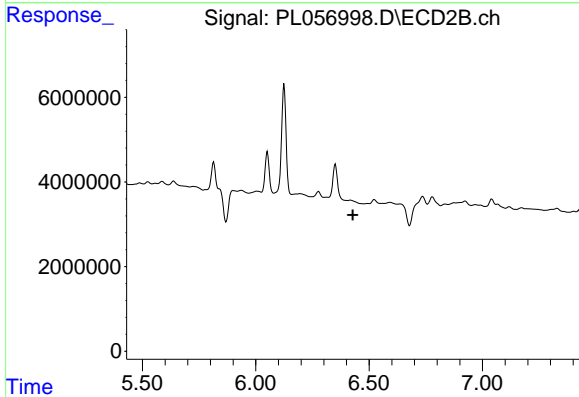


#12 4,4'-DDE  
R.T.: 6.277 min  
Delta R.T.: -0.005 min  
Response: 2014377  
Conc: 0.71 ng/ml



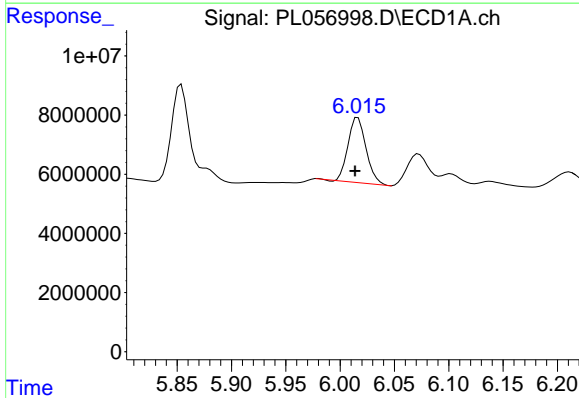
#13 Dieldrin

R.T.: 5.748 min  
Delta R.T.: -0.008 min  
Response: 25193743  
Conc: 2.06 ng/ml



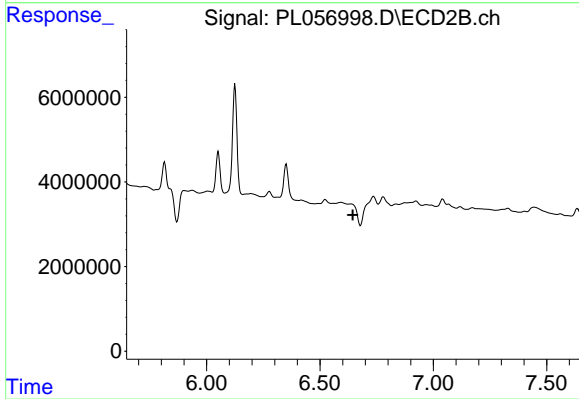
#13 Dieldrin

R.T.: 0.000 min  
Exp R.T.: 6.428 min  
Response: 0  
Conc: N.D.



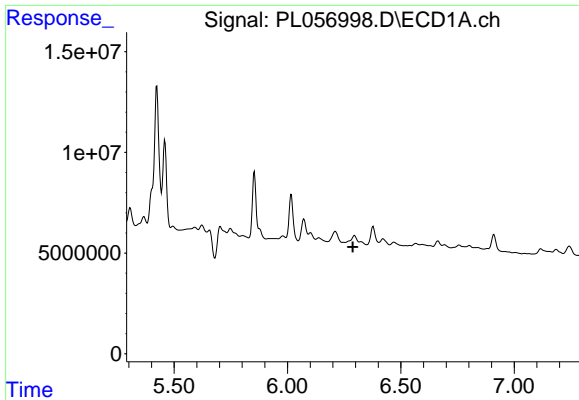
#14 Endrin

R.T.: 6.016 min  
Delta R.T.: 0.003 min  
Response: 25560533  
Conc: 2.35 ng/ml



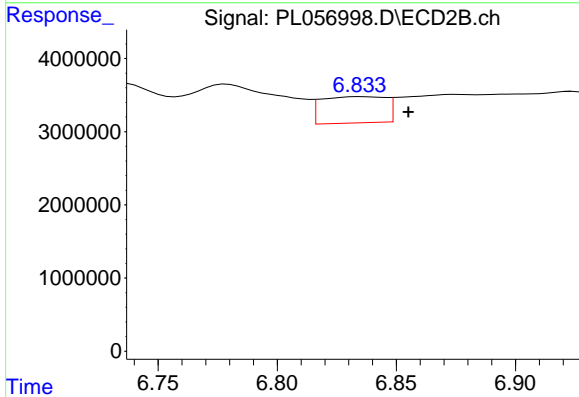
#14 Endrin

R.T.: 0.000 min  
Exp R.T.: 6.645 min  
Response: 0  
Conc: N.D.



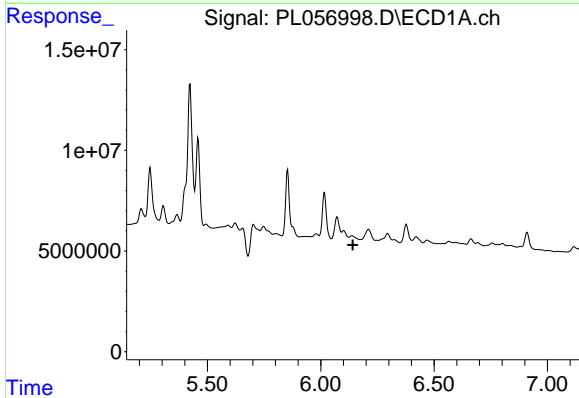
#15 Endosulfan II

R.T.: 0.000 min  
 Exp R.T. : 6.287 min  
 Response: 0  
 Conc: N.D.



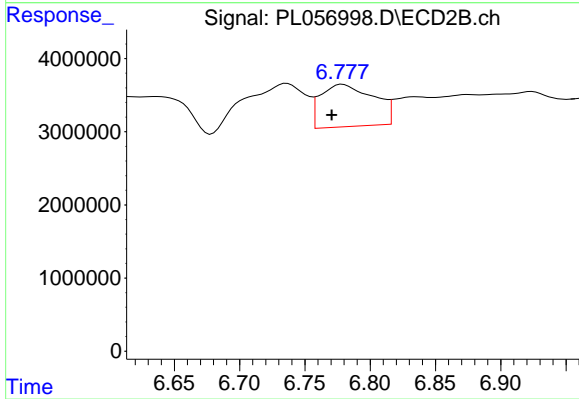
#15 Endosulfan II

R.T.: 6.835 min  
 Delta R.T.: -0.020 min  
 Response: 6763359  
 Conc: 2.41 ng/ml



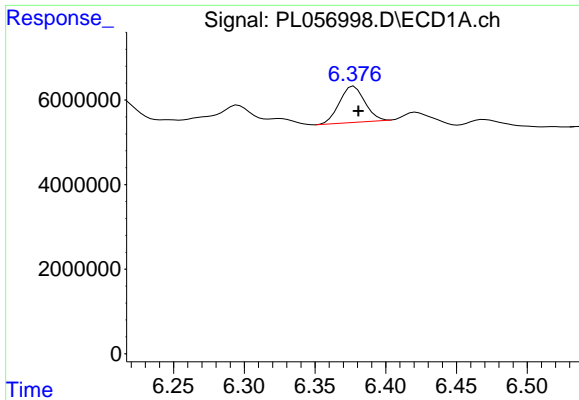
#16 4,4'-DDD

R.T.: 0.000 min  
 Exp R.T. : 6.141 min  
 Response: 0  
 Conc: N.D.



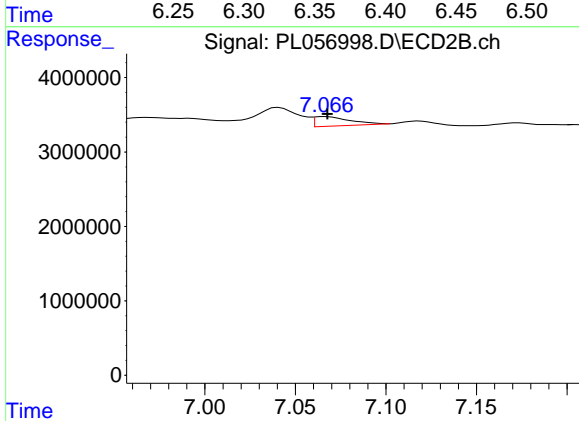
#16 4,4'-DDD

R.T.: 6.779 min  
 Delta R.T.: 0.008 min  
 Response: 16370548  
 Conc: 6.72 ng/ml



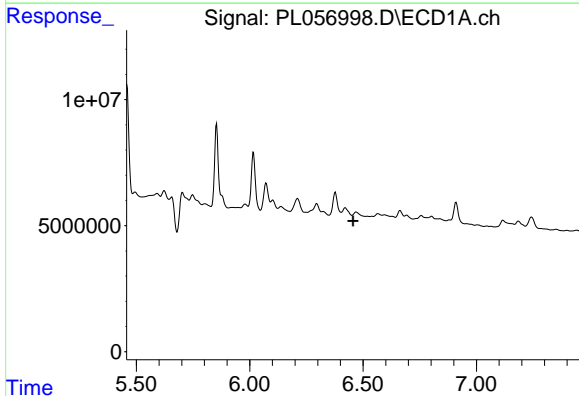
#17 4,4'-DDT

R.T.: 6.378 min  
 Delta R.T.: -0.003 min  
 Response: 10621497  
 Conc: 1.09 ng/ml



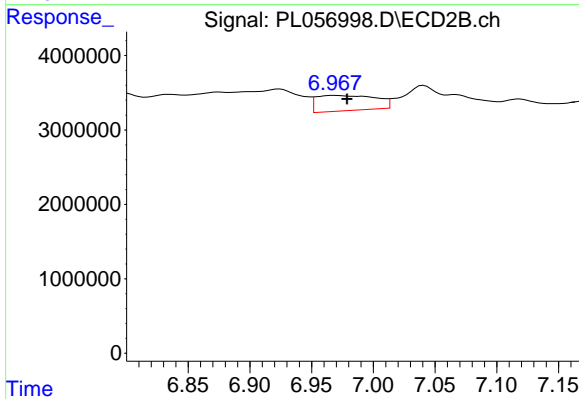
#17 4,4'-DDT

R.T.: 7.067 min  
 Delta R.T.: 0.000 min  
 Response: 1748204  
 Conc: 0.71 ng/ml



#18 Endrin aldehyde

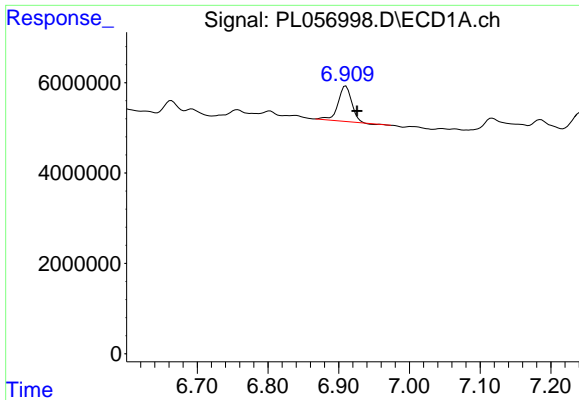
R.T.: 0.000 min  
 Exp R.T. : 6.456 min  
 Response: 0  
 Conc: N.D.



#18 Endrin aldehyde

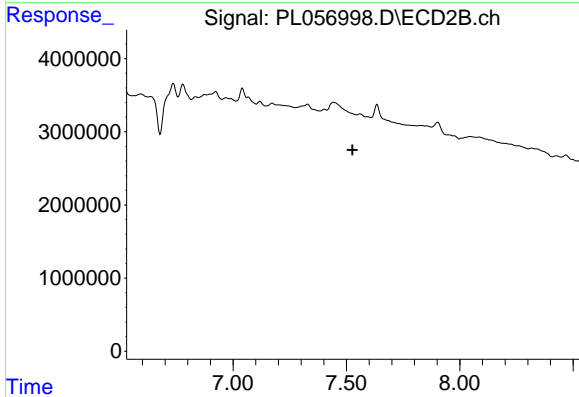
R.T.: 6.969 min  
 Delta R.T.: -0.010 min  
 Response: 6859000  
 Conc: 2.96 ng/ml





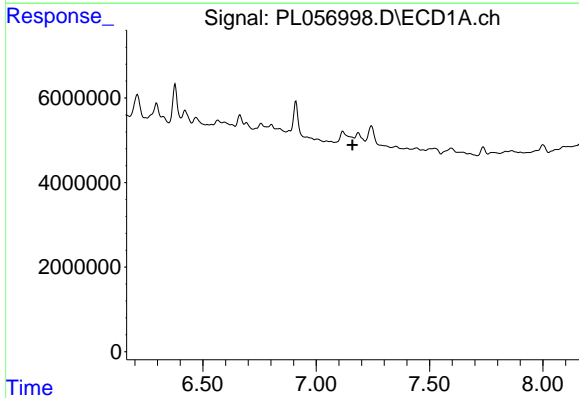
#20 Methoxychlor

R.T.: 6.910 min  
 Delta R.T.: -0.016 min  
 Response: 10524044  
 Conc: 2.11 ng/ml



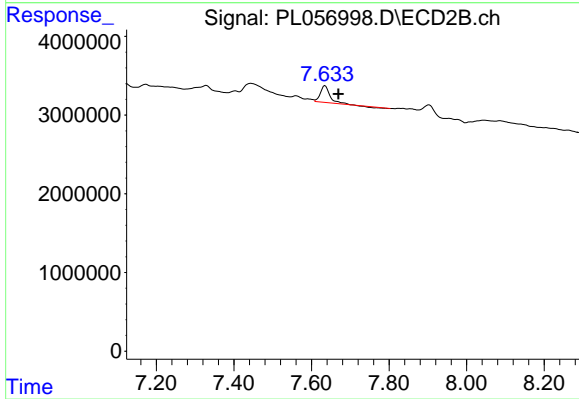
#20 Methoxychlor

R.T.: 0.000 min  
 Exp R.T. : 7.527 min  
 Response: 0  
 Conc: N.D.



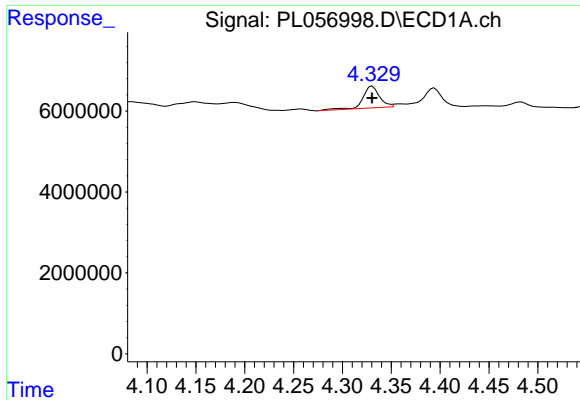
#21 Endrin ketone

R.T.: 0.000 min  
 Exp R.T. : 7.160 min  
 Response: 0  
 Conc: N.D.



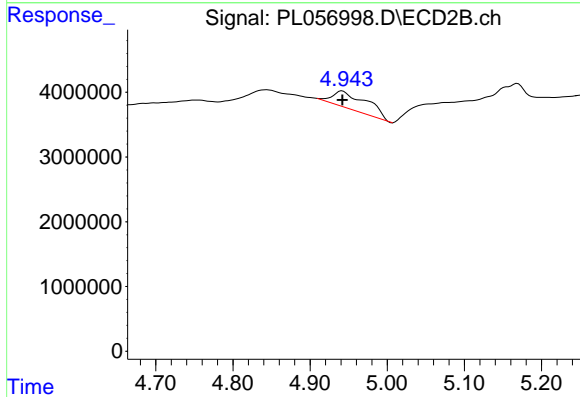
#21 Endrin ketone

R.T.: 7.635 min  
 Delta R.T.: -0.035 min  
 Response: 3415883  
 Conc: 1.25 ng/ml



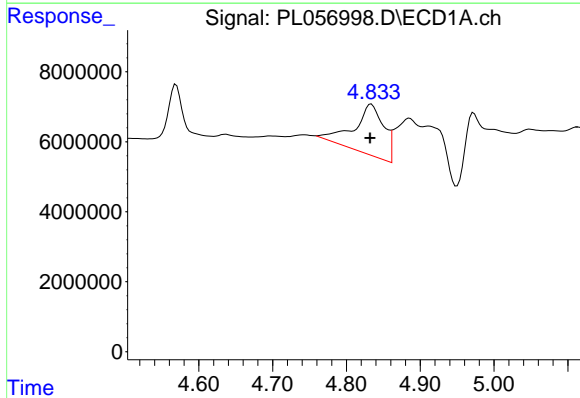
#23 Chlordane-1

R.T.: 4.331 min  
 Delta R.T.: 0.000 min  
 Response: 6384872  
 Conc: 21.01 ng/ml



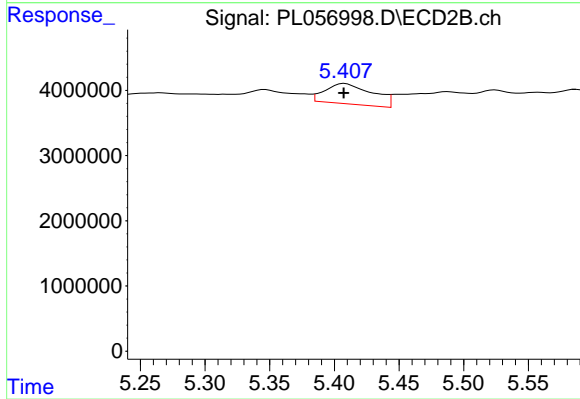
#23 Chlordane-1

R.T.: 4.942 min  
 Delta R.T.: 0.000 min  
 Response: 8350677  
 Conc: 104.11 ng/ml



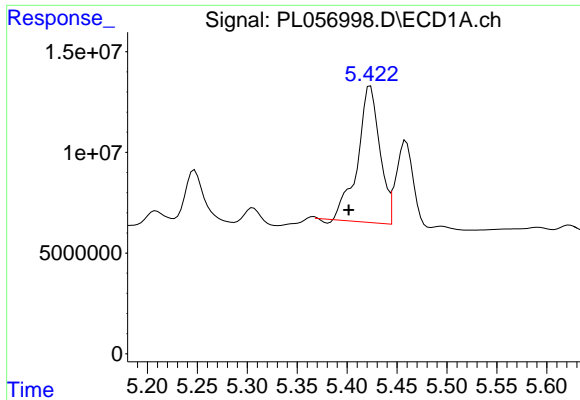
#24 Chlordane-2

R.T.: 4.834 min  
 Delta R.T.: 0.002 min  
 Response: 40948786  
 Conc: 116.11 ng/ml



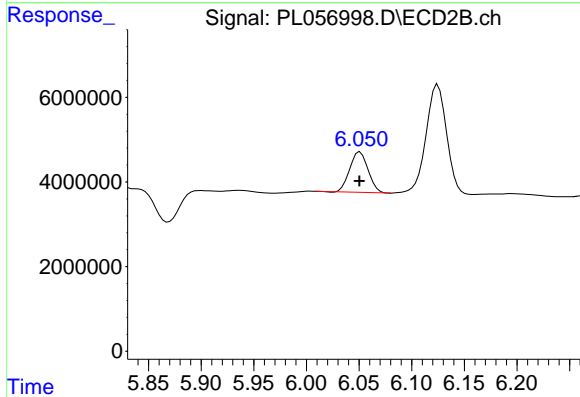
#24 Chlordane-2

R.T.: 5.408 min  
 Delta R.T.: 0.000 min  
 Response: 7939291  
 Conc: 83.17 ng/ml



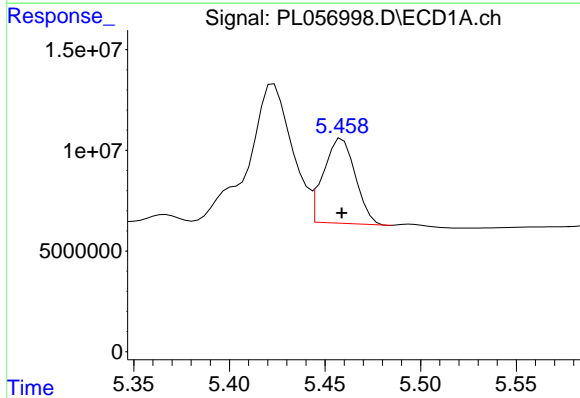
#25 Chlordane-3

R.T.: 5.423 min  
Delta R.T.: 0.022 min  
Response: 104658677  
Conc: 97.03 ng/ml



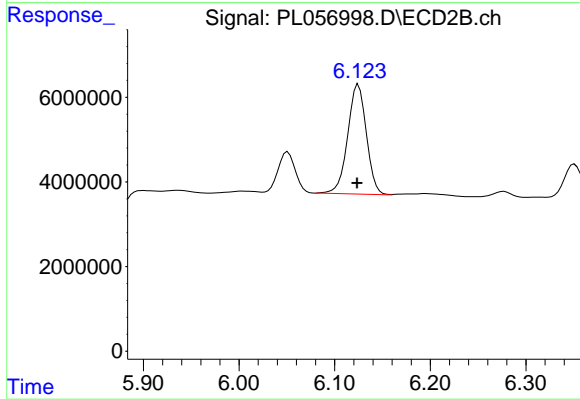
#25 Chlordane-3

R.T.: 6.051 min  
Delta R.T.: 0.000 min  
Response: 11633468  
Conc: 30.70 ng/ml



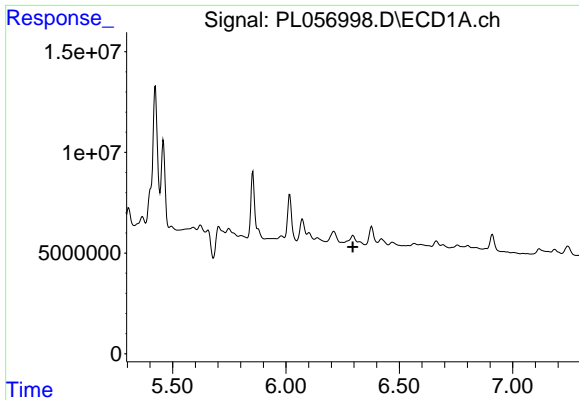
#26 Chlordane-4

R.T.: 5.459 min  
Delta R.T.: 0.000 min  
Response: 49008487  
Conc: 53.33 ng/ml



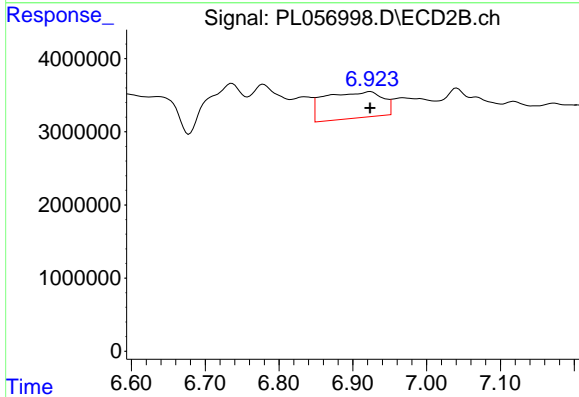
#26 Chlordane-4

R.T.: 6.125 min  
Delta R.T.: 0.001 min  
Response: 35357725  
Conc: 77.11 ng/ml



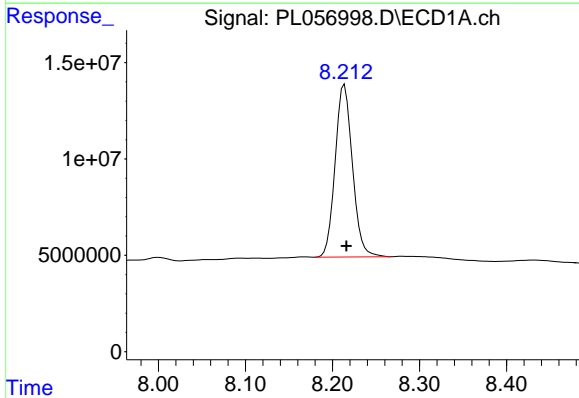
#27 Chlordane-5

R.T.: 0.000 min  
 Exp R.T. : 6.295 min  
 Response: 0  
 Conc: N.D.



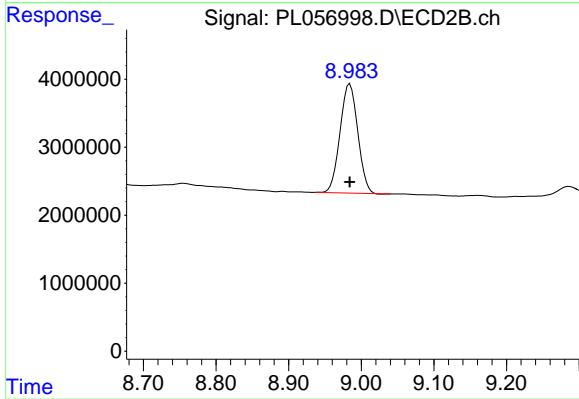
#27 Chlordane-5

R.T.: 6.924 min  
 Delta R.T.: 0.000 min  
 Response: 19680988  
 Conc: 235.90 ng/ml



#28 Decachlorobiphenyl

R.T.: 8.214 min  
 Delta R.T.: -0.002 min  
 Response: 123699409  
 Conc: 12.80 ng/ml



#28 Decachlorobiphenyl

R.T.: 8.984 min  
 Delta R.T.: 0.000 min  
 Response: 27195754  
 Conc: 12.80 ng/ml