

Data Path : Z:\pestpcbsrv\HPCHEM1\ECD\_L\Data\PL030320\  
 Data File : PL056979.D  
 Signal(s) : Signal #1: ECD1A.ch Signal #2: ECD2B.ch  
 Acq On : 03 Mar 2020 23:55  
 Operator : AJ\MA  
 Sample : PB127240BL  
 Misc :  
 ALS Vial : 13 Sample Multiplier: 1

Instrument :  
 ECD\_L  
 ClientSampleId :  
 PB127240BL

Integration File signal 1: autoint1.e  
 Integration File signal 2: autoint2.e  
 Quant Time: Mar 04 04:36:00 2020  
 Quant Method : Z:\pestpcbsrv\HPCHEM1\ECD\_L\methods\PL030320.M  
 Quant Title : GC Extractables  
 QLast Update : Wed Mar 04 03:55:01 2020  
 Response via : Initial Calibration  
 Integrator: ChemStation

Volume Inj. : 1 µl  
 Signal #1 Phase : ZB-MR2 Signal #2 Phase: ZB-MR1  
 Signal #1 Info : 30M x 0.32mm x0.2 Signal #2 Info : 30M x 0.32mm x0.5µm

Compound	RT#1	RT#2	Resp#1	Resp#2	ng/ml	ng/ml
-----						
System Monitoring Compounds						
1) SA Tetrachlo...	3.461	3.958	176.3E6	43115520	20.690	20.209
28) SA Decachlor...	8.214	8.985	189.1E6	39296356	19.565	18.495

Target Compounds

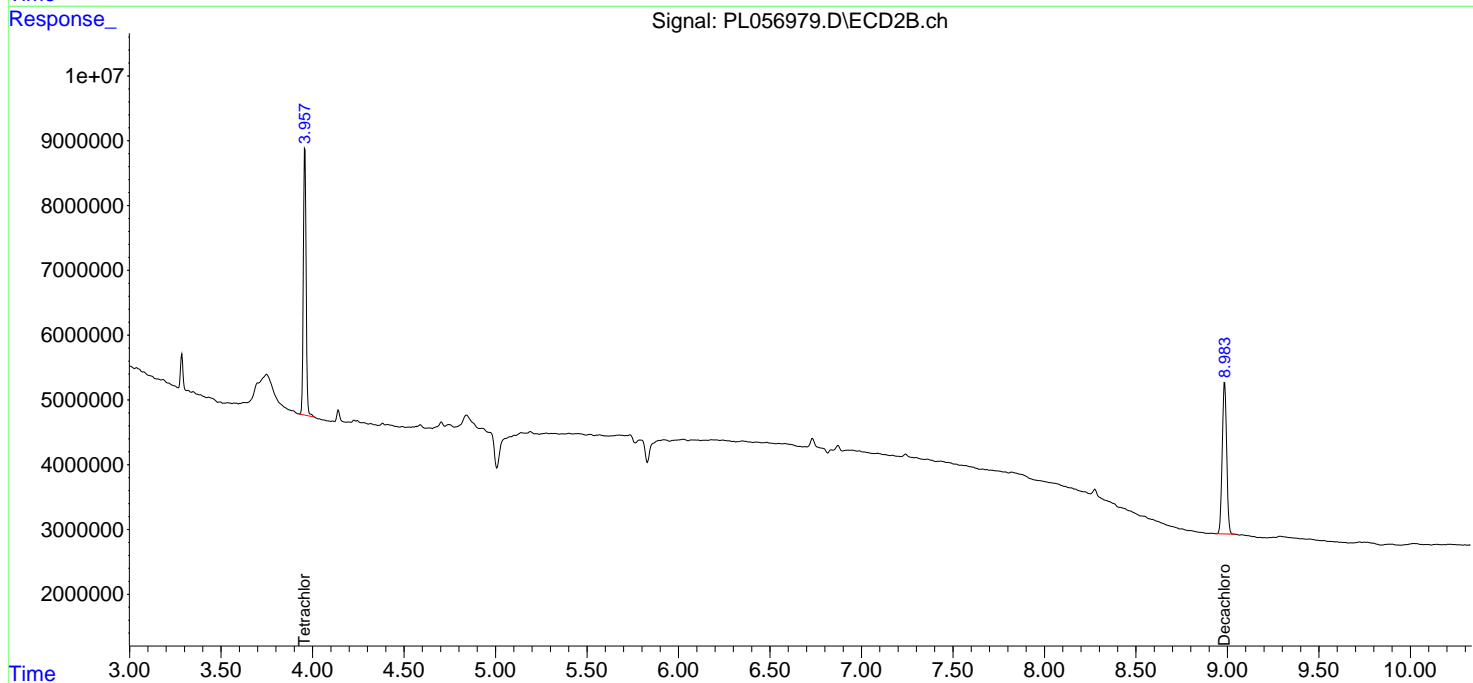
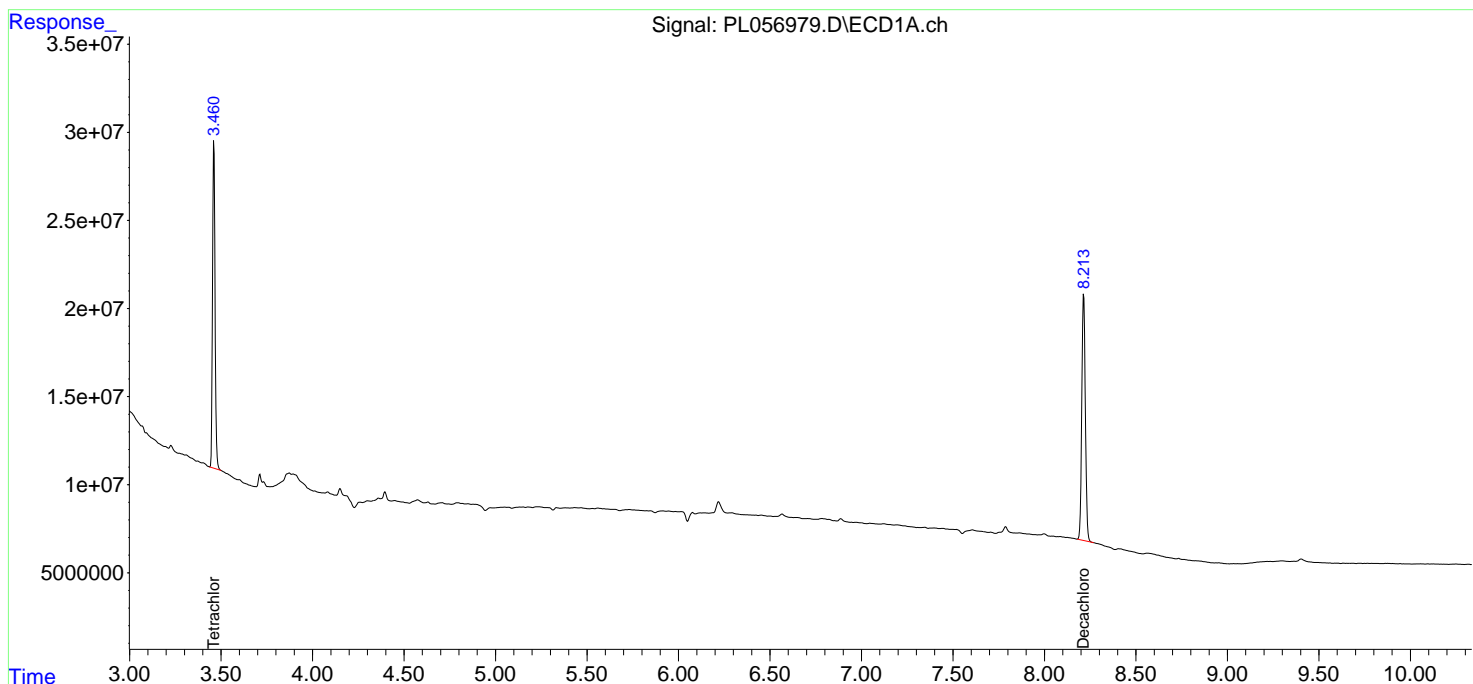
(f)=RT Delta > 1/2 Window (#)=Amounts differ by > 25% (m)=manual int.

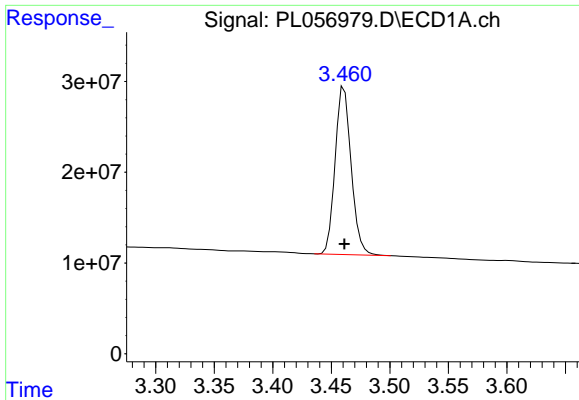
Data Path : Z:\pestpcbsrv\HPCHEM1\ECD\_L\Data\PL030320\  
 Data File : PL056979.D  
 Signal(s) : Signal #1: ECD1A.ch Signal #2: ECD2B.ch  
 Acq On : 03 Mar 2020 23:55  
 Operator : AJ\MA  
 Sample : PB127240BL  
 Misc :  
 ALS Vial : 13 Sample Multiplier: 1

Instrument :  
 ECD\_L  
 ClientSampled :  
 PB127240BL

Integration File signal 1: autoint1.e  
 Integration File signal 2: autoint2.e  
 Quant Time: Mar 04 04:36:00 2020  
 Quant Method : Z:\pestpcbsrv\HPCHEM1\ECD\_L\methods\PL030320.M  
 Quant Title : GC Extractables  
 QLast Update : Wed Mar 04 03:55:01 2020  
 Response via : Initial Calibration  
 Integrator: ChemStation

Volume Inj. : 1 µl  
 Signal #1 Phase : ZB-MR2 Signal #2 Phase: ZB-MR1  
 Signal #1 Info : 30M x 0.32mm x0.2 Signal #2 Info : 30M x 0.32mm x0.5µm

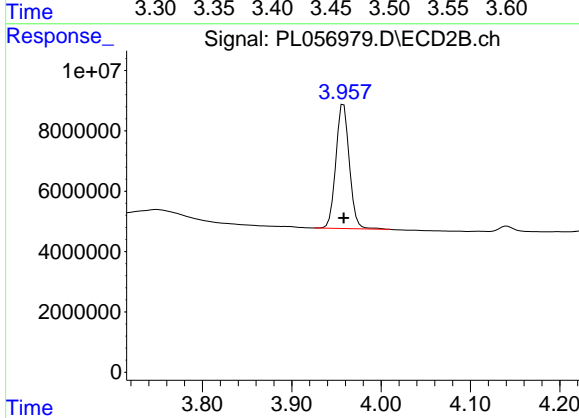




#1 Tetrachloro-m-xylene

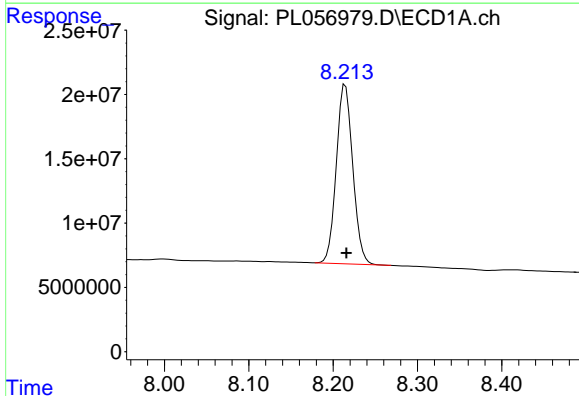
R.T.: 3.461 min  
 Delta R.T.: 0.000 min  
 Response: 176330046  
 Conc: 20.69 ng/ml

Instrument :  
 ECD\_L  
 ClientSampleId :  
 PB127240BL



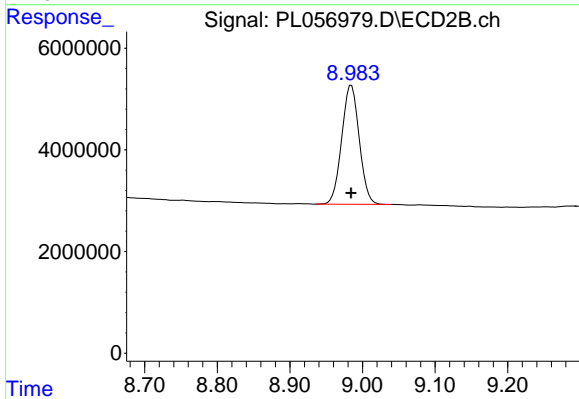
#1 Tetrachloro-m-xylene

R.T.: 3.958 min  
 Delta R.T.: 0.000 min  
 Response: 43115520  
 Conc: 20.21 ng/ml



#28 Decachlorobiphenyl

R.T.: 8.214 min  
 Delta R.T.: -0.001 min  
 Response: 189096073  
 Conc: 19.56 ng/ml



#28 Decachlorobiphenyl

R.T.: 8.985 min  
 Delta R.T.: 0.000 min  
 Response: 39296356  
 Conc: 18.49 ng/ml