

Data Path : Z:\pestpcbsrv\HPCHEM1\ECD_L\Data\PL030320\
 Data File : PL057010.D
 Signal(s) : Signal #1: ECD1A.ch Signal #2: ECD2B.ch
 Acq On : 04 Mar 2020 07:37
 Operator : AJ\MA
 Sample : L1757-06
 Misc :
 ALS Vial : 42 Sample Multiplier: 1

Instrument :
 ECD_L
 ClientSampleId :
 EO-02-030220

Integration File signal 1: autoint1.e
 Integration File signal 2: autoint2.e
 Quant Time: Mar 04 15:18:12 2020
 Quant Method : Z:\pestpcbsrv\HPCHEM1\ECD_L\methods\PL030320.M
 Quant Title : GC Extractables
 QLast Update : Wed Mar 04 03:55:01 2020
 Response via : Initial Calibration
 Integrator: ChemStation

Volume Inj. : 1 µl
 Signal #1 Phase : ZB-MR2 Signal #2 Phase: ZB-MR1
 Signal #1 Info : 30M x 0.32mm x0.2 Signal #2 Info : 30M x 0.32mm x0.5µm

Compound	RT#1	RT#2	Resp#1	Resp#2	ng/ml	ng/ml

System Monitoring Compounds						
1) SA Tetrachlo...	3.461	3.958	196.7E6	49909831	23.079	23.393
28) SA Decachlor...	8.213	8.984	187.5E6	42714501	19.405	20.103

Target Compounds

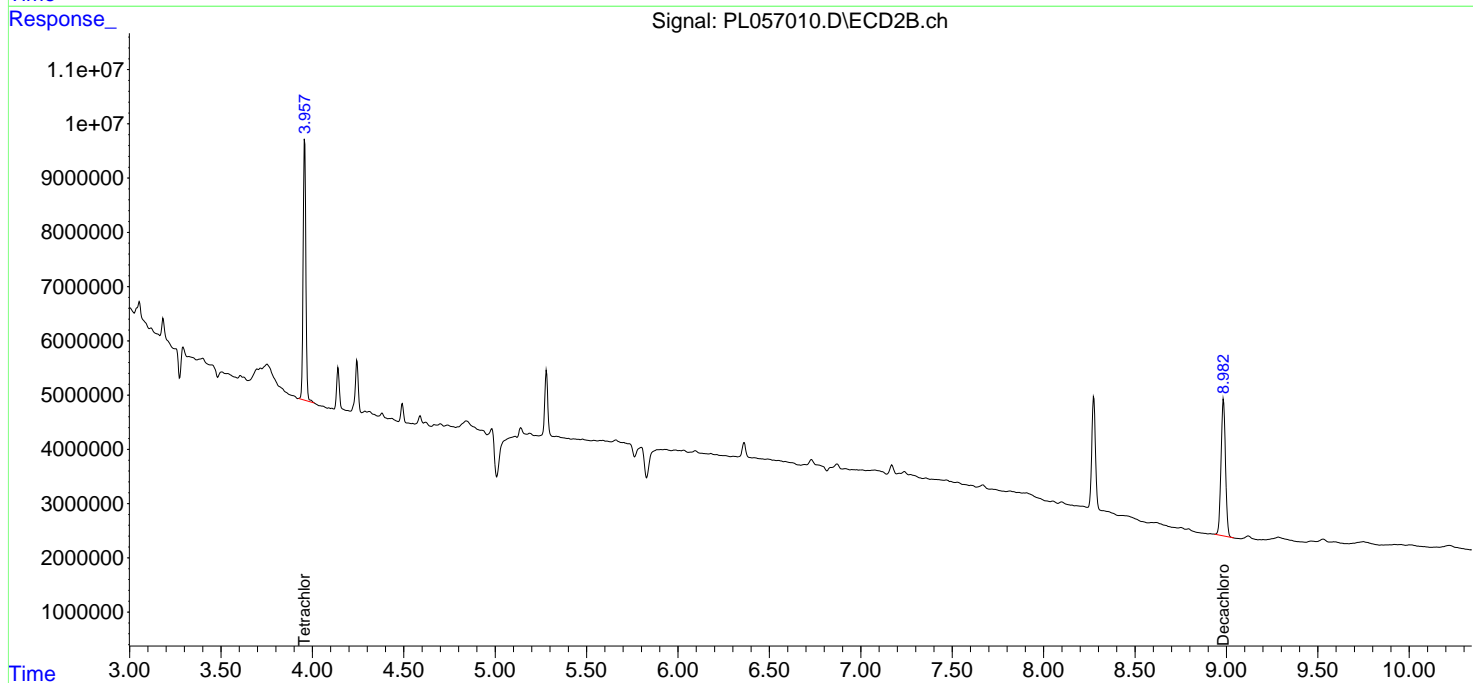
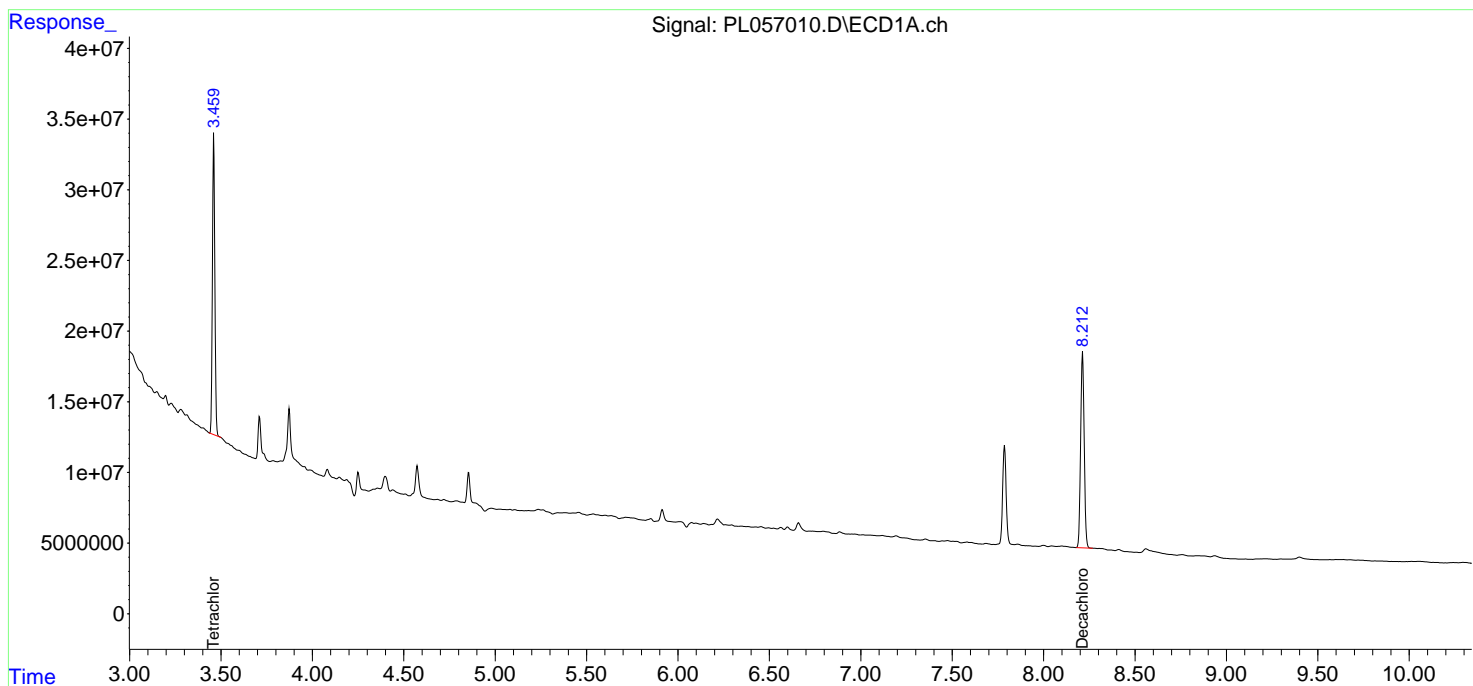
(f)=RT Delta > 1/2 Window (#)=Amounts differ by > 25% (m)=manual int.

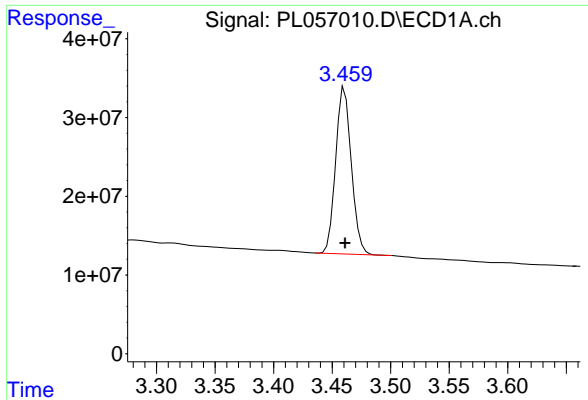
Data Path : Z:\pestpcbsrv\HPCHEM1\ECD_L\Data\PL030320\
 Data File : PL057010.D
 Signal(s) : Signal #1: ECD1A.ch Signal #2: ECD2B.ch
 Acq On : 04 Mar 2020 07:37
 Operator : AJ\MA
 Sample : L1757-06
 Misc :
 ALS Vial : 42 Sample Multiplier: 1

Instrument :
 ECD_L
 ClientSampleId :
 EO-02-030220

Integration File signal 1: autoint1.e
 Integration File signal 2: autoint2.e
 Quant Time: Mar 04 15:18:12 2020
 Quant Method : Z:\pestpcbsrv\HPCHEM1\ECD_L\methods\PL030320.M
 Quant Title : GC Extractables
 QLast Update : Wed Mar 04 03:55:01 2020
 Response via : Initial Calibration
 Integrator: ChemStation

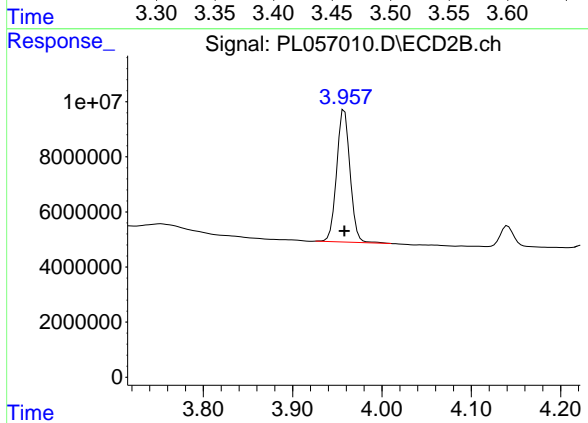
Volume Inj. : 1 µl
 Signal #1 Phase : ZB-MR2 Signal #2 Phase: ZB-MR1
 Signal #1 Info : 30M x 0.32mm x0.2 Signal #2 Info : 30M x 0.32mm x0.5µm



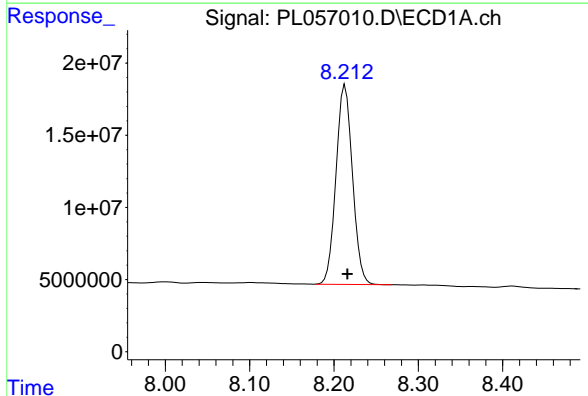


#1 Tetrachloro-m-xylene
 R.T.: 3.461 min
 Delta R.T.: 0.000 min
 Response: 196682774
 Conc: 23.08 ng/ml

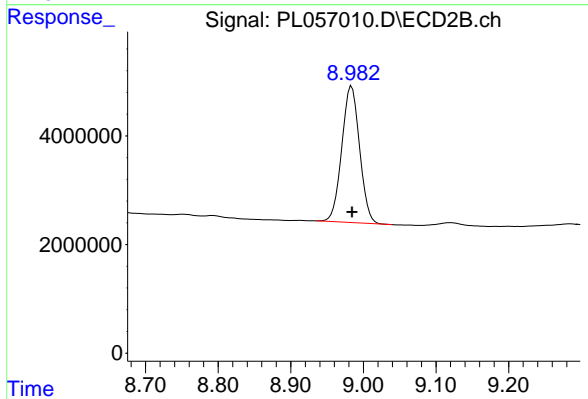
Instrument :
 ECD_L
 ClientSampleId :
 EO-02-030220



#1 Tetrachloro-m-xylene
 R.T.: 3.958 min
 Delta R.T.: 0.000 min
 Response: 49909831
 Conc: 23.39 ng/ml



#28 Decachlorobiphenyl
 R.T.: 8.213 min
 Delta R.T.: -0.003 min
 Response: 187549896
 Conc: 19.40 ng/ml



#28 Decachlorobiphenyl
 R.T.: 8.984 min
 Delta R.T.: 0.000 min
 Response: 42714501
 Conc: 20.10 ng/ml