

Data Path : Z:\pestpcbsrv\HPCHEM1\ECD_L\Data\PL030320\
 Data File : PL057020.D
 Signal(s) : Signal #1: ECD1A.ch Signal #2: ECD2B.ch
 Acq On : 04 Mar 2020 10:32
 Operator : AJ\MA
 Sample : I.BLK
 Misc :
 ALS Vial : 2 Sample Multiplier: 1

Instrument :
 ECD_L
 ClientSampleId :
 I.BLK

Integration File signal 1: autoint1.e
 Integration File signal 2: autoint2.e
 Quant Time: Mar 04 15:20:34 2020
 Quant Method : Z:\pestpcbsrv\HPCHEM1\ECD_L\methods\PL030320.M
 Quant Title : GC Extractables
 QLast Update : Wed Mar 04 03:55:01 2020
 Response via : Initial Calibration
 Integrator: ChemStation

Volume Inj. : 1 µl
 Signal #1 Phase : ZB-MR2 Signal #2 Phase: ZB-MR1
 Signal #1 Info : 30M x 0.32mm x0.2 Signal #2 Info : 30M x 0.32mm x0.5µm

Compound	RT#1	RT#2	Resp#1	Resp#2	ng/ml	ng/ml

System Monitoring Compounds						
1) SA Tetrachlo...	3.460	3.958	186.8E6	46926090	21.915	21.995
28) SA Decachlor...	8.212	8.983	204.3E6	42868007	21.134	20.176

Target Compounds

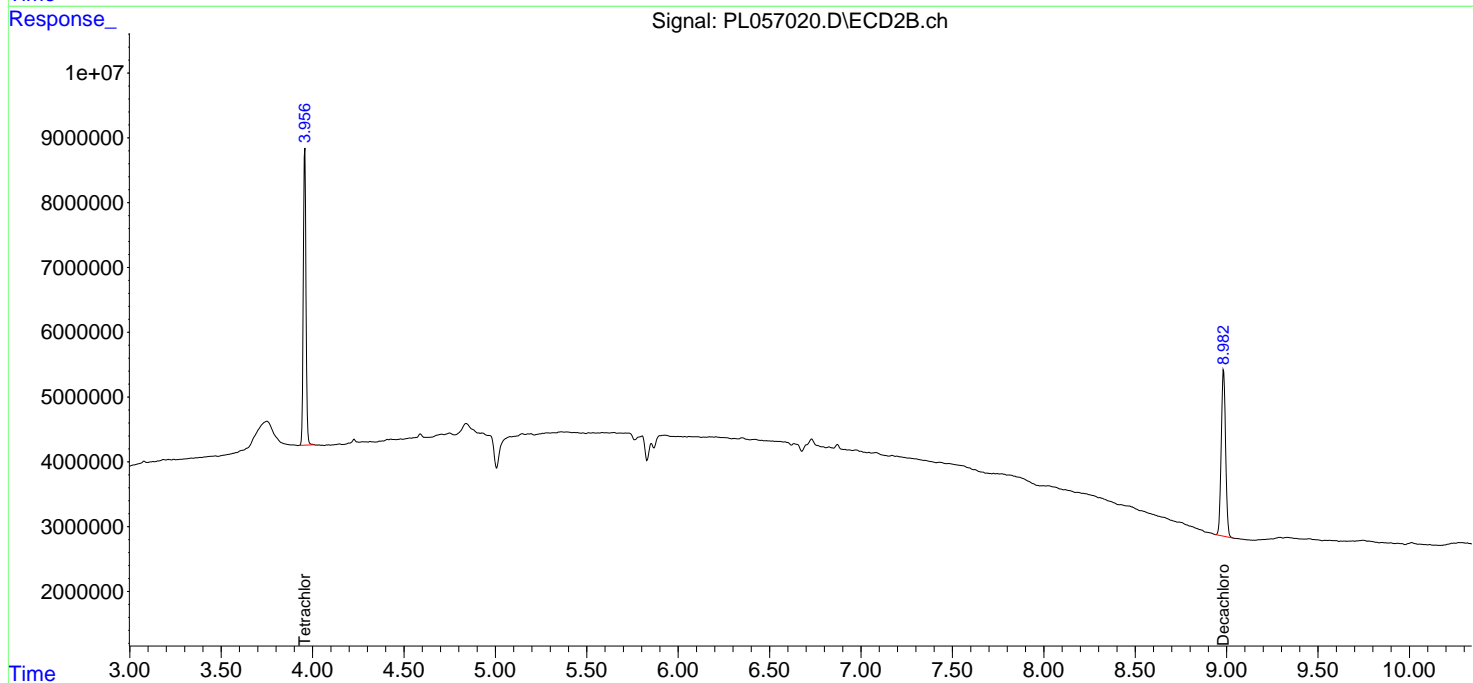
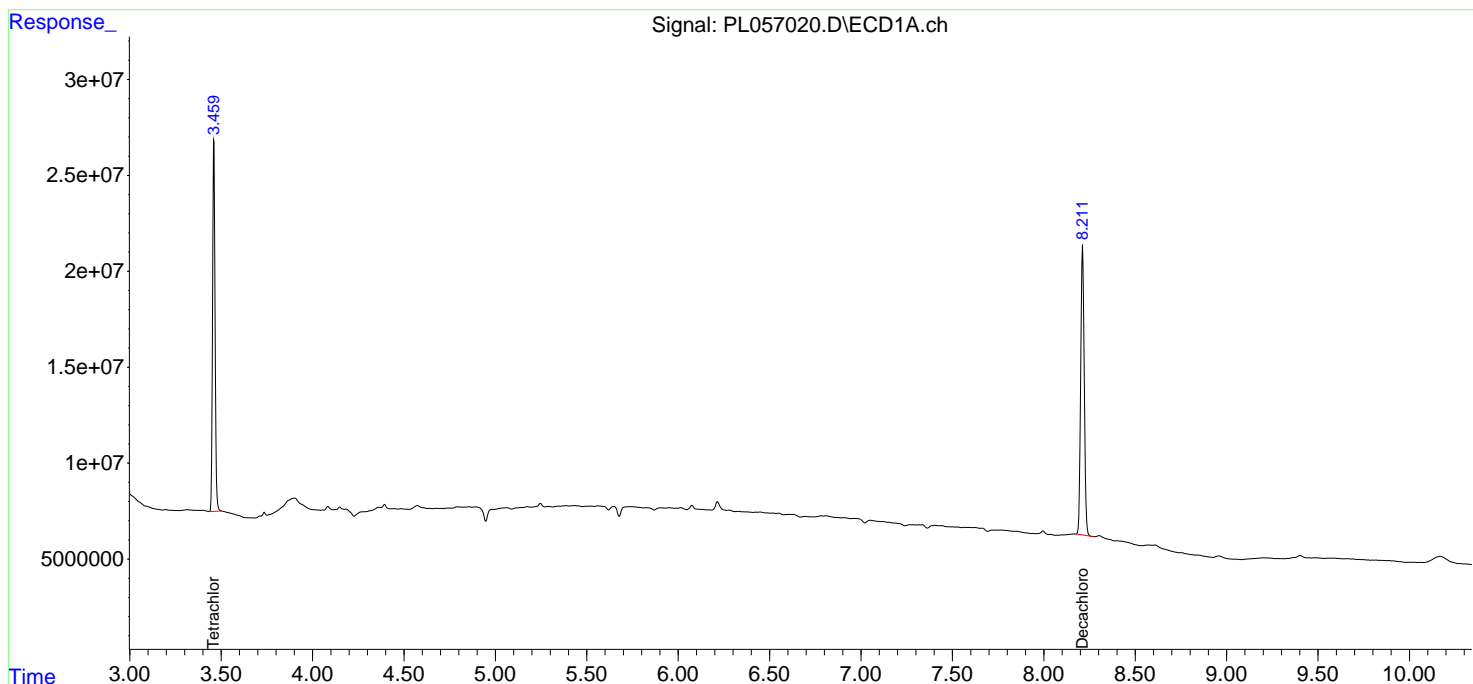
(f)=RT Delta > 1/2 Window (#)=Amounts differ by > 25% (m)=manual int.

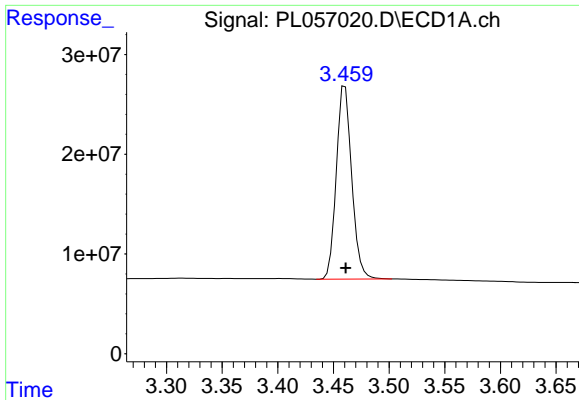
Data Path : Z:\pestpcbsrv\HPCHEM1\ECD_L\Data\PL030320\
 Data File : PL057020.D
 Signal(s) : Signal #1: ECD1A.ch Signal #2: ECD2B.ch
 Acq On : 04 Mar 2020 10:32
 Operator : AJ\MA
 Sample : I.BLK
 Misc :
 ALS Vial : 2 Sample Multiplier: 1

Instrument :
 ECD_L
 ClientSampleId :
 I.BLK

Integration File signal 1: autoint1.e
 Integration File signal 2: autoint2.e
 Quant Time: Mar 04 15:20:34 2020
 Quant Method : Z:\pestpcbsrv\HPCHEM1\ECD_L\methods\PL030320.M
 Quant Title : GC Extractables
 QLast Update : Wed Mar 04 03:55:01 2020
 Response via : Initial Calibration
 Integrator: ChemStation

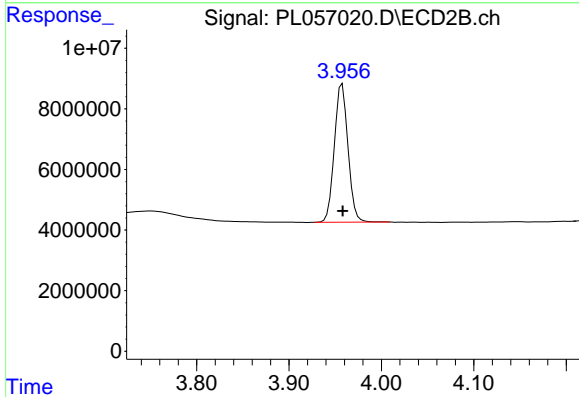
Volume Inj. : 1 µl
 Signal #1 Phase : ZB-MR2 Signal #2 Phase: ZB-MR1
 Signal #1 Info : 30M x 0.32mm x0.2 Signal #2 Info : 30M x 0.32mm x0.5µm



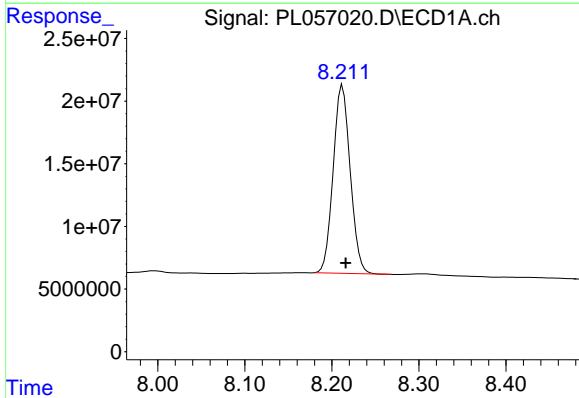


#1 Tetrachloro-m-xylene
 R.T.: 3.460 min
 Delta R.T.: 0.000 min
 Response: 186763106
 Conc: 21.91 ng/ml

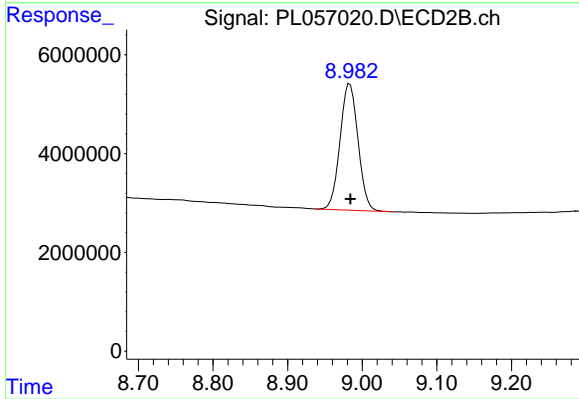
Instrument :
 ECD_L
 ClientSampleId :
 I.BLK



#1 Tetrachloro-m-xylene
 R.T.: 3.958 min
 Delta R.T.: 0.000 min
 Response: 46926090
 Conc: 21.99 ng/ml



#28 Decachlorobiphenyl
 R.T.: 8.212 min
 Delta R.T.: -0.004 min
 Response: 204264237
 Conc: 21.13 ng/ml



#28 Decachlorobiphenyl
 R.T.: 8.983 min
 Delta R.T.: -0.001 min
 Response: 42868007
 Conc: 20.18 ng/ml