

Data Path : Z:\pestpcbsrv\HPCHEM1\ECD_L\Data\PL030419\
 Data File : PL045377.D
 Signal(s) : Signal #1: ECD1A.ch Signal #2: ECD2B.ch
 Acq On : 04 Mar 2019 10:31
 Operator : AJ\SJ
 Sample : PB117555BL
 Misc :
 ALS Vial : 7 Sample Multiplier: 1

Instrument :
 ECD_L
 ClientSampleId :
 PB117555BL

Integration File signal 1: autoint1.e
 Integration File signal 2: autoint2.e
 Quant Time: Mar 04 23:48:36 2019
 Quant Method : Z:\pestpcbsrv\HPCHEM1\ECD_L\methods\PL022719.M
 Quant Title : GC Extractables
 QLast Update : Wed Feb 27 17:00:03 2019
 Response via : Initial Calibration
 Integrator: ChemStation

Volume Inj. : 2 µl
 Signal #1 Phase : ZB-MR1 Signal #2 Phase: ZB-MR2
 Signal #1 Info : 30M x 0.32mm x0.5 Signal #2 Info : 30M x 0.32mm x0.25µm

Compound	RT#1	RT#2	Resp#1	Resp#2	ng/ml	ng/ml

System Monitoring Compounds						
1) SA Tetrachlo...	3.367	3.983	131.7E6	41120192	19.148	19.201
28) SA Decachlor...	8.053	9.045	168.3E6	47834845	20.108	20.935

Target Compounds

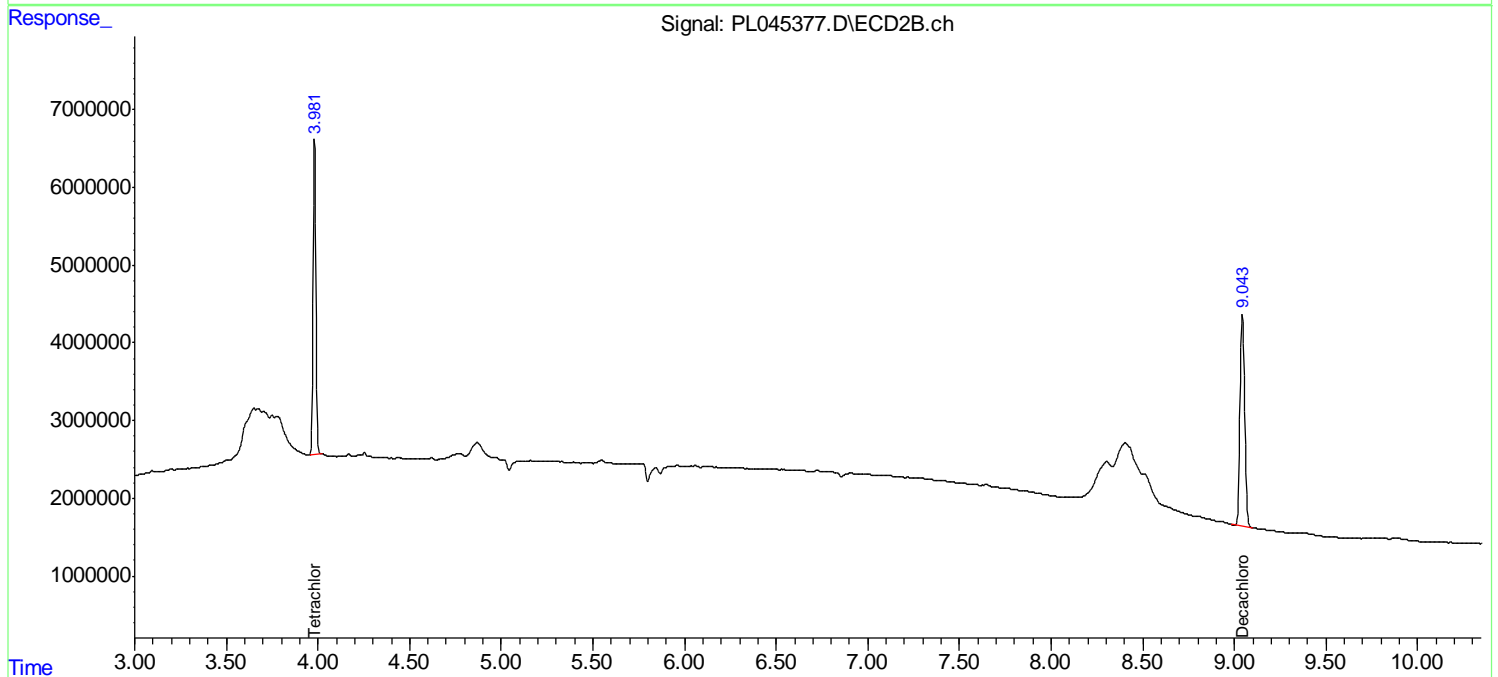
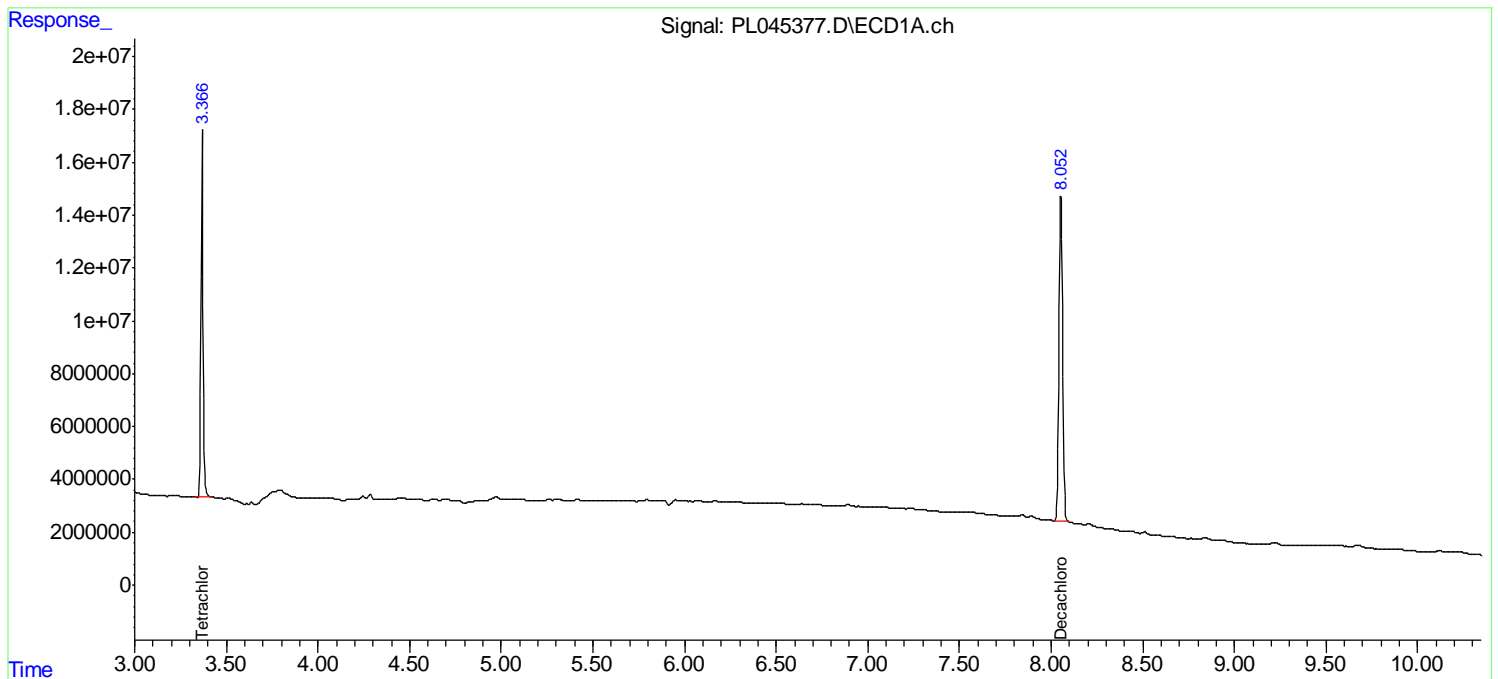
(f)=RT Delta > 1/2 Window (#)=Amounts differ by > 25% (m)=manual int.

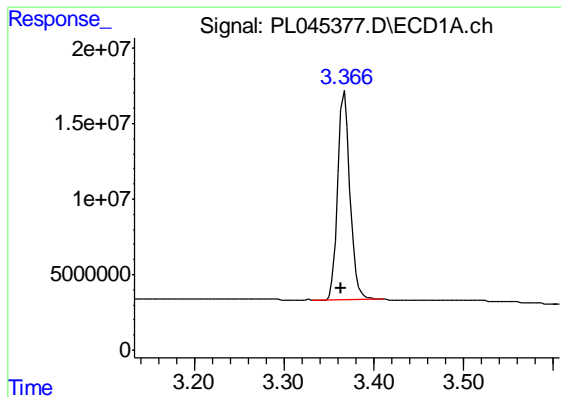
Data Path : Z:\pestpcbsrv\HPCHEM1\ECD_L\Data\PL030419\
Data File : PL045377.D
Signal(s) : Signal #1: ECD1A.ch Signal #2: ECD2B.ch
Acq On : 04 Mar 2019 10:31
Operator : AJ\SJ
Sample : PB117555BL
Misc :
ALS Vial : 7 Sample Multiplier: 1

Instrument :
ECD_L
ClientSampleId :
PB117555BL

Integration File signal 1: autoint1.e
Integration File signal 2: autoint2.e
Quant Time: Mar 04 23:48:36 2019
Quant Method : Z:\pestpcbsrv\HPCHEM1\ECD_L\methods\PL022719.M
Quant Title : GC Extractables
QLast Update : Wed Feb 27 17:00:03 2019
Response via : Initial Calibration
Integrator: ChemStation

Volume Inj. : 2 µl
Signal #1 Phase : ZB-MR1 Signal #2 Phase: ZB-MR2
Signal #1 Info : 30M x 0.32mm x0.5 Signal #2 Info : 30M x 0.32mm x0.25µm

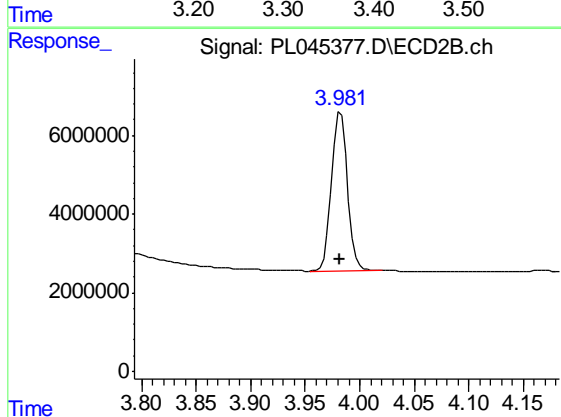




#1 Tetrachloro-m-xylene

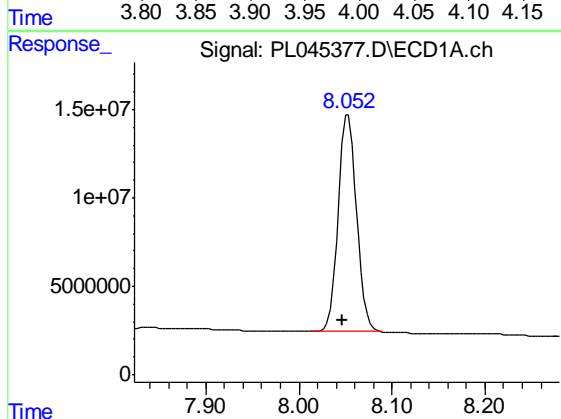
R.T.: 3.367 min
 Delta R.T.: 0.004 min
 Response: 131722374
 Conc: 19.15 ng/ml

Instrument :
 ECD_L
 ClientSampleId :
 PB117555BL



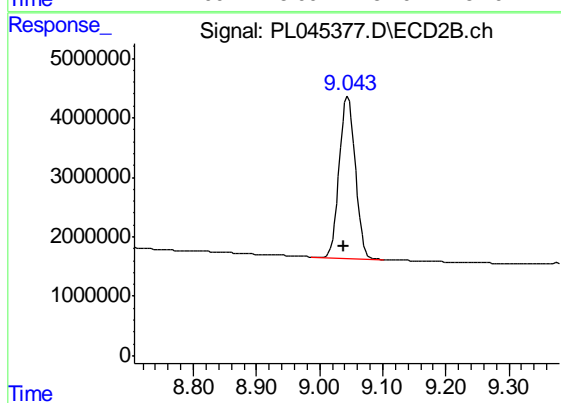
#1 Tetrachloro-m-xylene

R.T.: 3.983 min
 Delta R.T.: 0.000 min
 Response: 41120192
 Conc: 19.20 ng/ml



#28 Decachlorobiphenyl

R.T.: 8.053 min
 Delta R.T.: 0.006 min
 Response: 168254508
 Conc: 20.11 ng/ml



#28 Decachlorobiphenyl

R.T.: 9.045 min
 Delta R.T.: 0.006 min
 Response: 47834845
 Conc: 20.93 ng/ml