

Data Path : Z:\pestpcbsrv\HPCHEM1\ECD_L\Data\PL030419\
 Data File : PL045405.D
 Signal(s) : Signal #1: ECD1A.ch Signal #2: ECD2B.ch
 Acq On : 04 Mar 2019 17:20
 Operator : AJ\SJ
 Sample : PB117571BS
 Misc :
 ALS Vial : 33 Sample Multiplier: 1

Instrument :
 ECD_L
 ClientSampleId :
 PB117571BS

Integration File signal 1: autoint1.e
 Integration File signal 2: autoint2.e
 Quant Time: Mar 04 23:55:52 2019
 Quant Method : Z:\pestpcbsrv\HPCHEM1\ECD_L\methods\PL022719.M
 Quant Title : GC Extractables
 QLast Update : Wed Feb 27 17:00:03 2019
 Response via : Initial Calibration
 Integrator: ChemStation

Volume Inj. : 2 µl
 Signal #1 Phase : ZB-MR1 Signal #2 Phase: ZB-MR2
 Signal #1 Info : 30M x 0.32mm x0.5 Signal #2 Info : 30M x 0.32mm x0.25µm

	Compound	RT#1	RT#2	Resp#1	Resp#2	ng/ml	ng/ml

System Monitoring Compounds							
1)	SA Tetrachlo...	3.364	3.983	125.2E6	40887683	18.205	19.093
28)	SA Decachlor...	8.049	9.043	143.3E6	41256014	17.124	18.056
Target Compounds							
2)	A alpha-BHC	3.794	4.373	563.2E6	157.5E6	50.703	51.846
3)	MA gamma-BHC...	4.072	4.657	516.1E6	146.3E6	51.067	51.801
4)	MA Heptachlor	4.359	5.165	528.6E6	151.0E6	50.097	50.767
5)	MB Aldrin	4.600	5.469	489.8E6	137.4E6	50.358	50.879
6)	B beta-BHC	4.325	4.830	209.5E6	65393270	48.875	51.493
7)	B delta-BHC	4.521	5.045	489.5E6	127.0E6	51.214	59.064
8)	B Heptachlo...	5.038	5.856	463.5E6	129.2E6	49.667	53.797
9)	A Endosulfan I	5.370	6.212	429.9E6	121.6E6	48.091	48.812
10)	B gamma-Chl...	5.261	6.090	465.9E6	133.3E6	47.605	49.681
11)	B alpha-Chl...	5.318	6.162	458.4E6	132.3E6	47.276	49.044
12)	B 4,4'-DDE	5.485	6.321	428.1E6	116.1E6	48.767	49.705
13)	MA Dieldrin	5.610	6.469	473.0E6	126.5E6	49.489	49.220
14)	MA Endrin	5.864	6.687	429.0E6	104.0E6	47.632	45.723
15)	B Endosulfa...	6.138	6.896	414.2E6	112.2E6	47.784	47.704
16)	A 4,4'-DDD	5.997	6.810	363.8E6	95020549	49.684	49.410
17)	MA 4,4'-DDT	6.233	7.109	353.1E6	94066938	47.075	47.666
18)	B Endrin al...	6.306	7.021	338.5E6	95555857	46.304	46.745
19)	B Endosulfa...	6.517	7.244	378.0E6	106.7E6	46.500	47.421
20)	A Methoxychlor	6.778	7.567	187.3E6	54330016	42.648	44.264
21)	B Endrin ke...	7.001	7.713	430.3E6	114.7E6	46.702	48.232
22)	Mirex	7.178	8.166	311.6E6	90947788	41.886	45.664
24)	Chlordane-2	0.000	5.469f	0	137.4E6	N.D.	1137.321 #
25)	Chlordane-3	5.261	6.090	465.9E6	133.3E6	406.188	342.093
26)	Chlordane-4	5.318	6.162	458.4E6	132.3E6	432.466	282.810 #
27)	Chlordane-5	6.138	0.000	414.2E6	0	1199.443	N.D. #

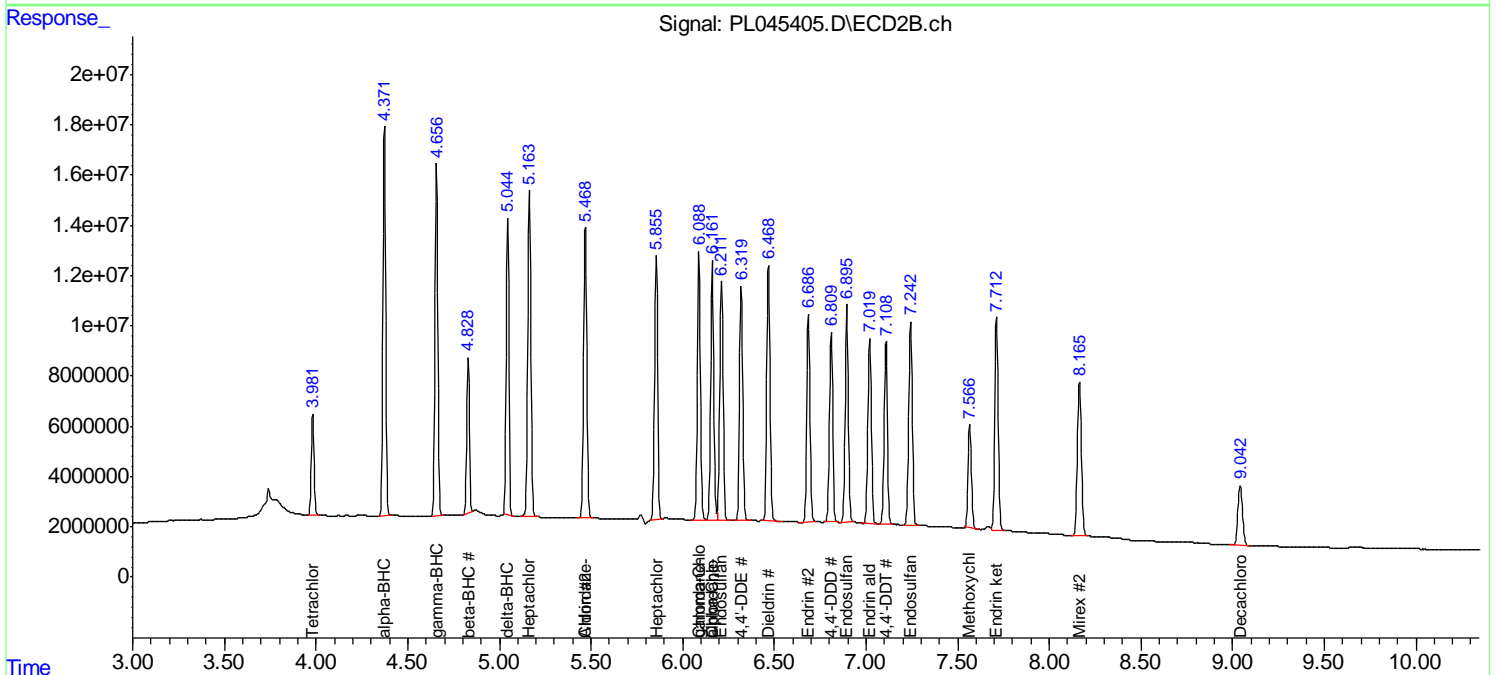
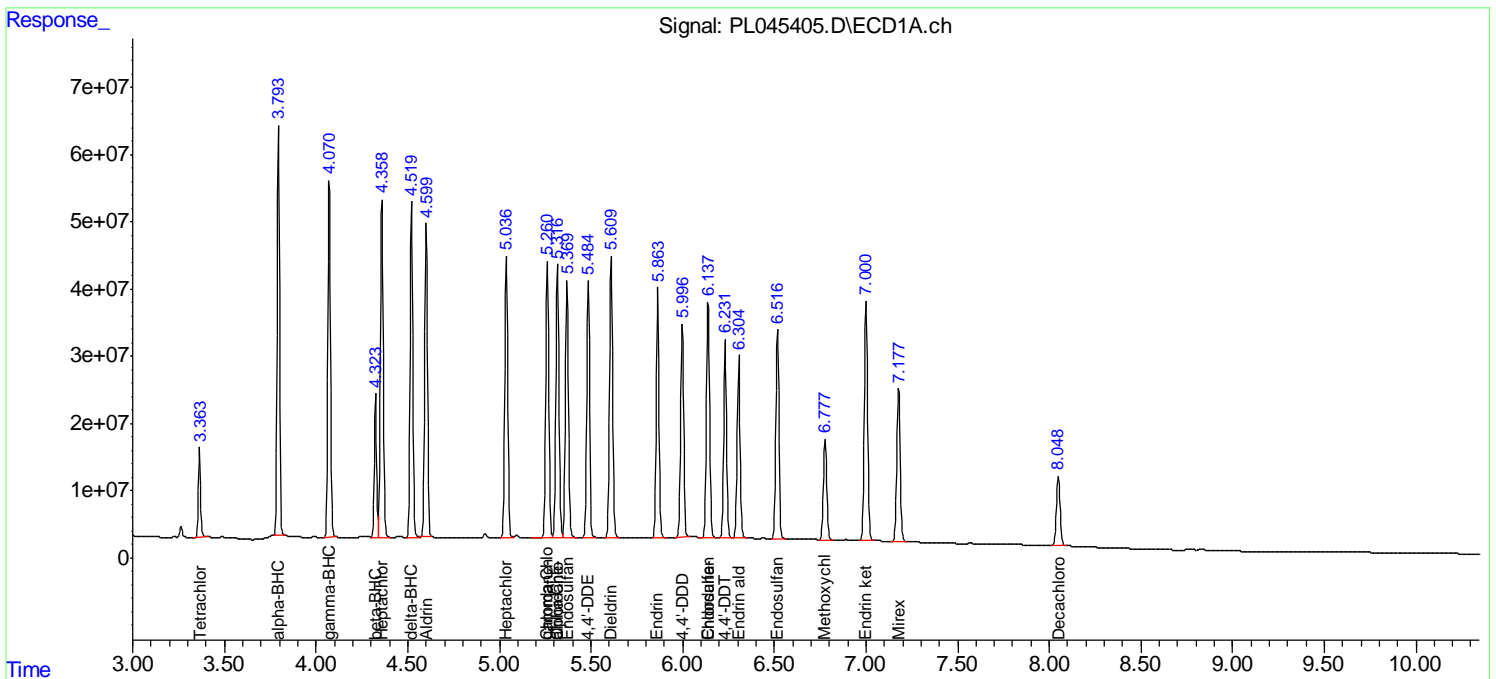
(f)=RT Delta > 1/2 Window (#)=Amounts differ by > 25% (m)=manual int.

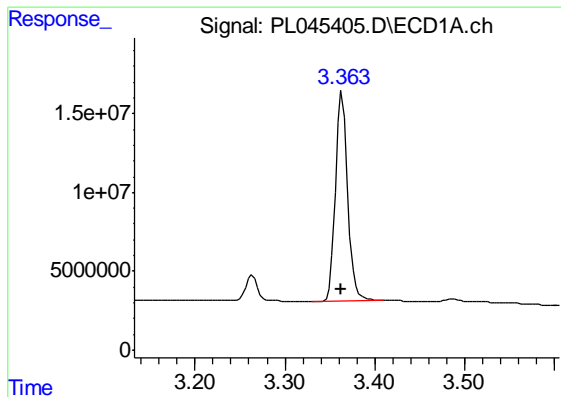
Data Path : Z:\pestpcbsrv\HPCHEM1\ECD_L\Data\PL030419\
 Data File : PL045405.D
 Signal(s) : Signal #1: ECD1A.ch Signal #2: ECD2B.ch
 Acq On : 04 Mar 2019 17:20
 Operator : AJ\SJ
 Sample : PB117571BS
 Misc :
 ALS Vial : 33 Sample Multiplier: 1

Instrument :
 ECD_L
 Client Sampled :
 PB117571BS

Integration File signal 1: autoint1.e
 Integration File signal 2: autoint2.e
 Quant Time: Mar 04 23:55:52 2019
 Quant Method : Z:\pestpcbsrv\HPCHEM1\ECD_L\methods\PL022719.M
 Quant Title : GC Extractables
 QLast Update : Wed Feb 27 17:00:03 2019
 Response via : Initial Calibration
 Integrator: ChemStation

Volume Inj. : 2 µl
 Signal #1 Phase : ZB-MR1 Signal #2 Phase: ZB-MR2
 Signal #1 Info : 30M x 0.32mm x0.5 Signal #2 Info : 30M x 0.32mm x0.25µm

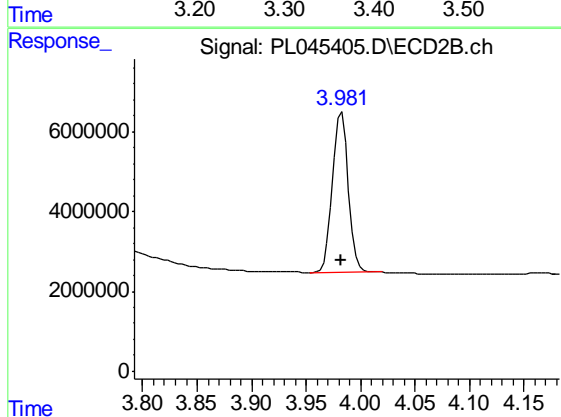




#1 Tetrachloro-m-xylene

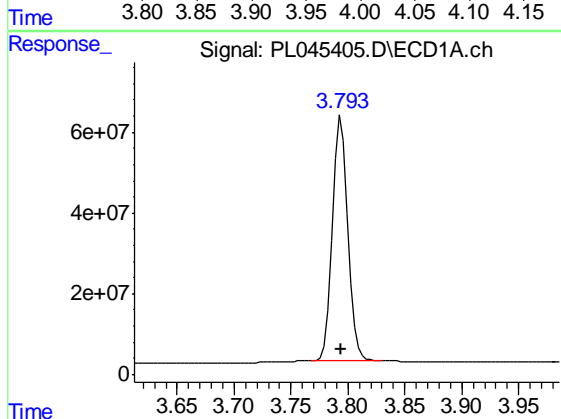
R.T.: 3.364 min
 Delta R.T.: 0.000 min
 Response: 125237081
 Conc: 18.20 ng/ml

Instrument :
 ECD_L
 ClientSampleId :
 PB117571BS



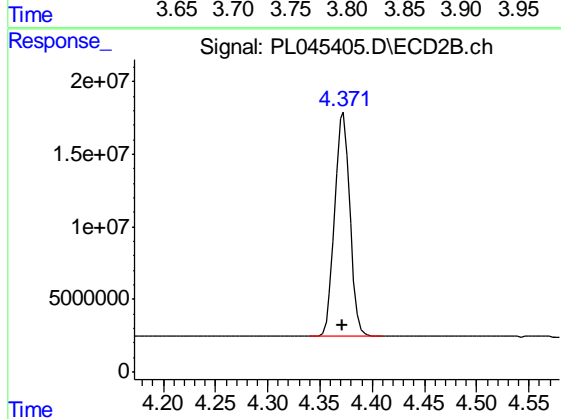
#1 Tetrachloro-m-xylene

R.T.: 3.983 min
 Delta R.T.: 0.001 min
 Response: 40887683
 Conc: 19.09 ng/ml



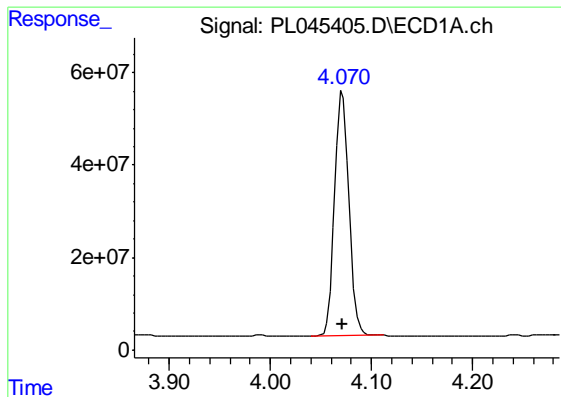
#2 alpha-BHC

R.T.: 3.794 min
 Delta R.T.: 0.000 min
 Response: 563174603
 Conc: 50.70 ng/ml



#2 alpha-BHC

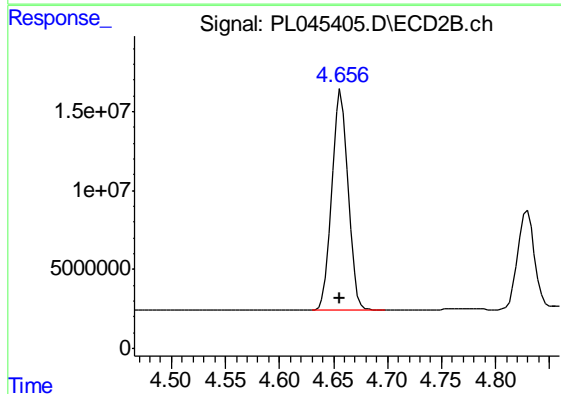
R.T.: 4.373 min
 Delta R.T.: 0.001 min
 Response: 157543032
 Conc: 51.85 ng/ml



#3 gamma-BHC (Lindane)

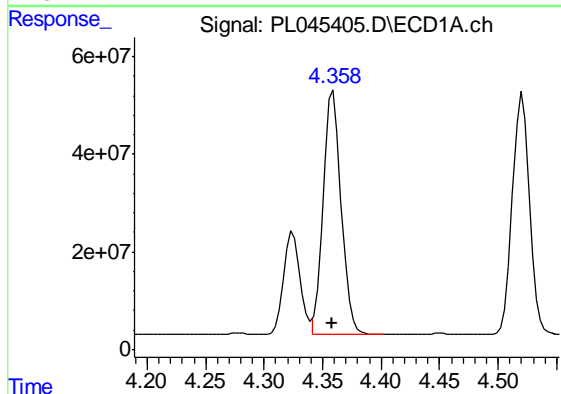
R.T.: 4.072 min
 Delta R.T.: 0.000 min
 Response: 516145047
 Conc: 51.07 ng/ml

Instrument :
 ECD_L
 ClientSampleId :
 PB117571BS



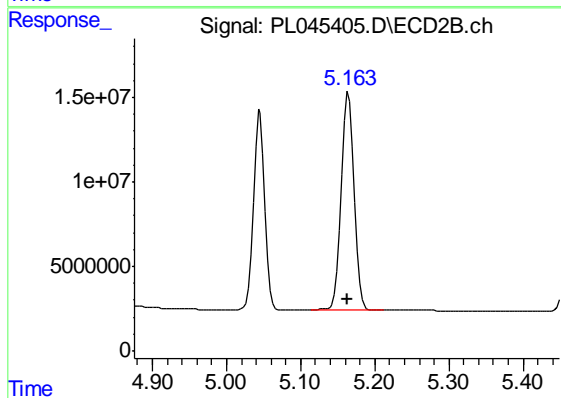
#3 gamma-BHC (Lindane)

R.T.: 4.657 min
 Delta R.T.: 0.001 min
 Response: 146318101
 Conc: 51.80 ng/ml



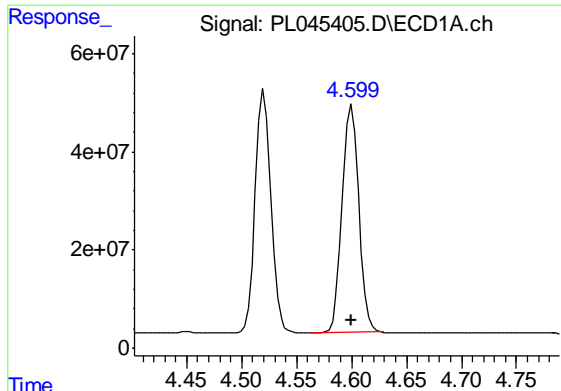
#4 Heptachlor

R.T.: 4.359 min
 Delta R.T.: 0.000 min
 Response: 528639494
 Conc: 50.10 ng/ml



#4 Heptachlor

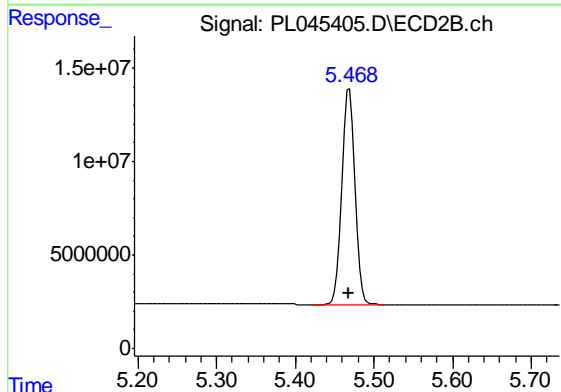
R.T.: 5.165 min
 Delta R.T.: 0.001 min
 Response: 151027585
 Conc: 50.77 ng/ml



#5 Aldrin

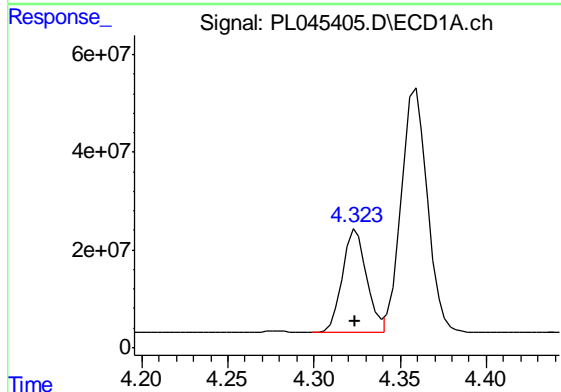
R.T.: 4.600 min
Delta R.T.: 0.000 min
Response: 489799326
Conc: 50.36 ng/ml

Instrument :
ECD_L
ClientSampleId :
PB117571BS



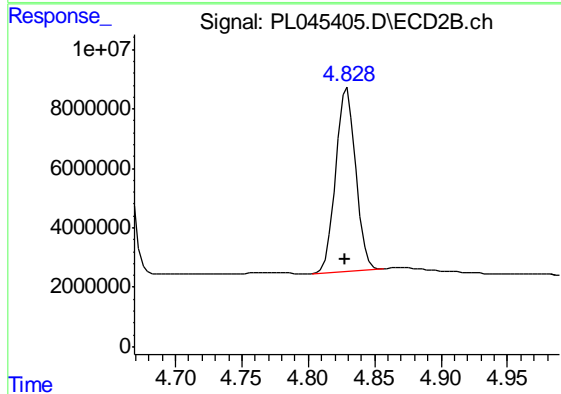
#5 Aldrin

R.T.: 5.469 min
Delta R.T.: 0.001 min
Response: 137422731
Conc: 50.88 ng/ml



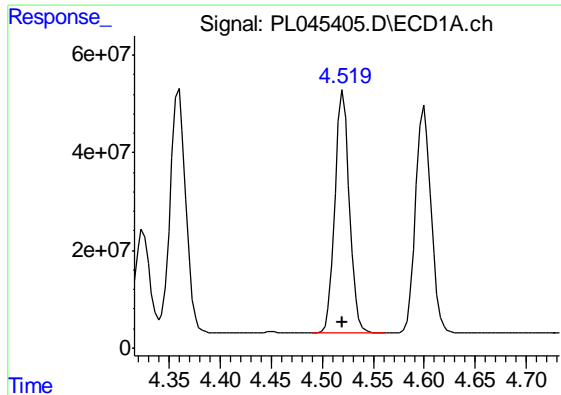
#6 beta-BHC

R.T.: 4.325 min
Delta R.T.: 0.000 min
Response: 209482254
Conc: 48.88 ng/ml



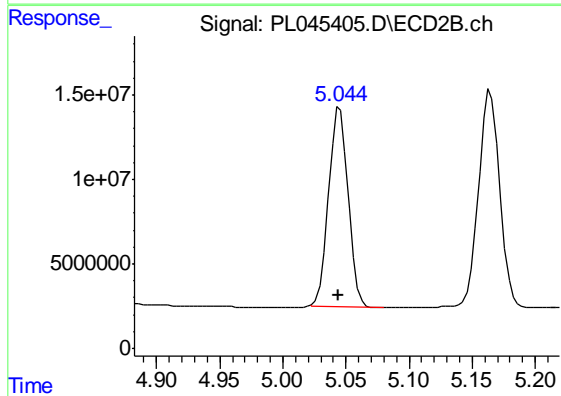
#6 beta-BHC

R.T.: 4.830 min
Delta R.T.: 0.002 min
Response: 65393270
Conc: 51.49 ng/ml

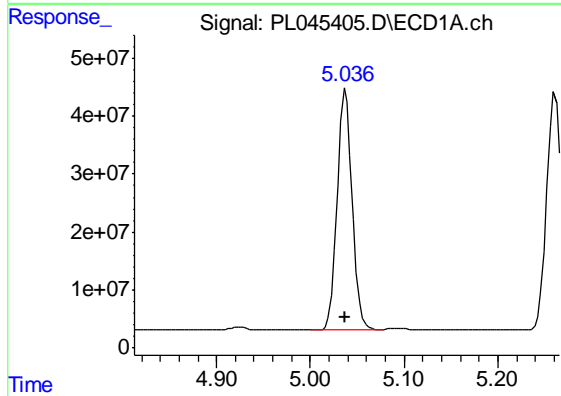


#7 delta-BHC
 R.T.: 4.521 min
 Delta R.T.: 0.000 min
 Response: 489502570
 Conc: 51.21 ng/ml

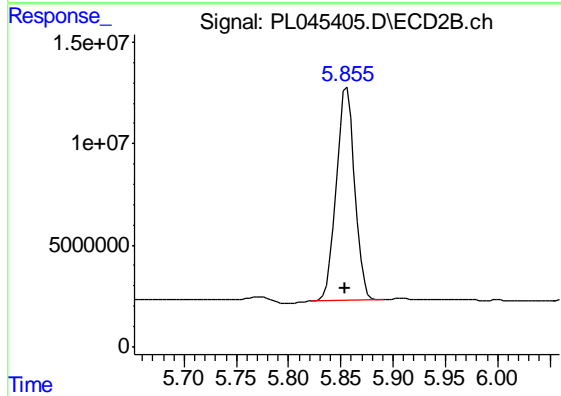
Instrument :
 ECD_L
 ClientSampleId :
 PB117571BS



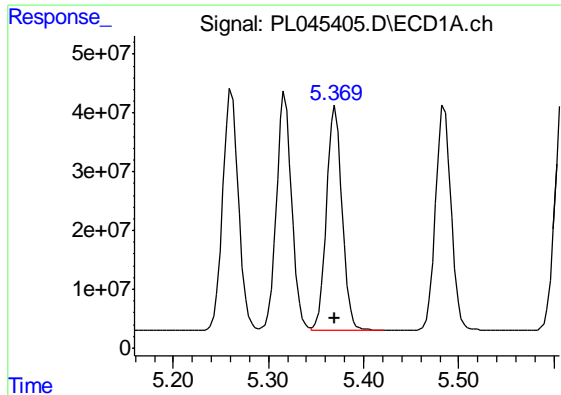
#7 delta-BHC
 R.T.: 5.045 min
 Delta R.T.: 0.001 min
 Response: 127039369
 Conc: 59.06 ng/ml



#8 Heptachlor epoxide
 R.T.: 5.038 min
 Delta R.T.: 0.000 min
 Response: 463545631
 Conc: 49.67 ng/ml



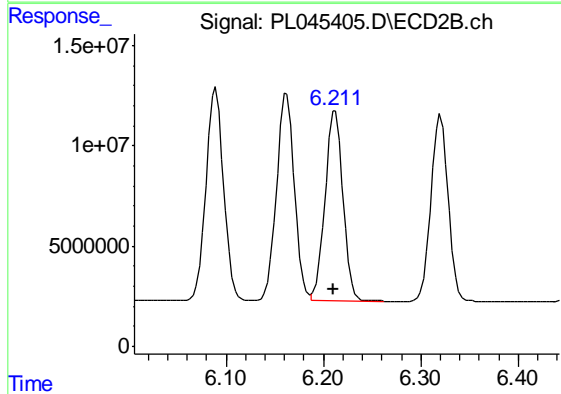
#8 Heptachlor epoxide
 R.T.: 5.856 min
 Delta R.T.: 0.002 min
 Response: 129215816
 Conc: 53.80 ng/ml



#9 Endosulfan I

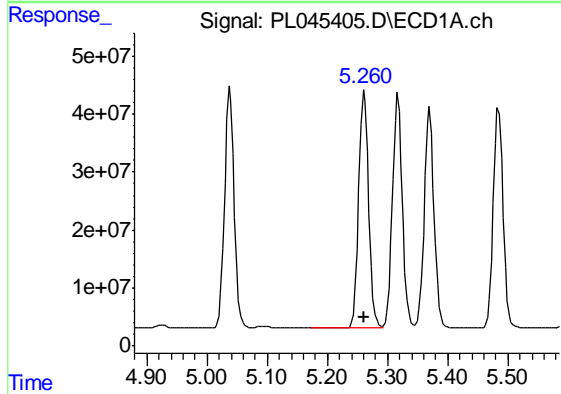
R.T.: 5.370 min
 Delta R.T.: 0.000 min
 Response: 429851984
 Conc: 48.09 ng/ml

Instrument :
 ECD_L
 ClientSampleId :
 PB117571BS



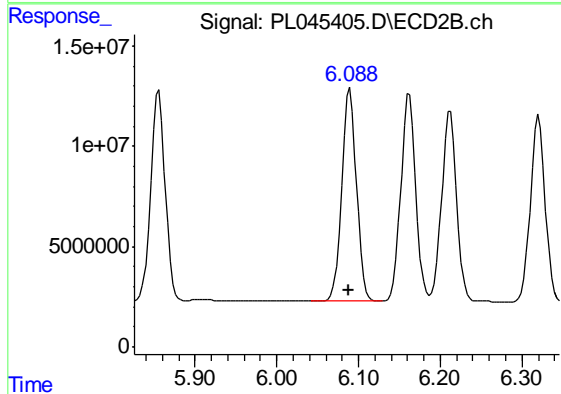
#9 Endosulfan I

R.T.: 6.212 min
 Delta R.T.: 0.002 min
 Response: 121556051
 Conc: 48.81 ng/ml



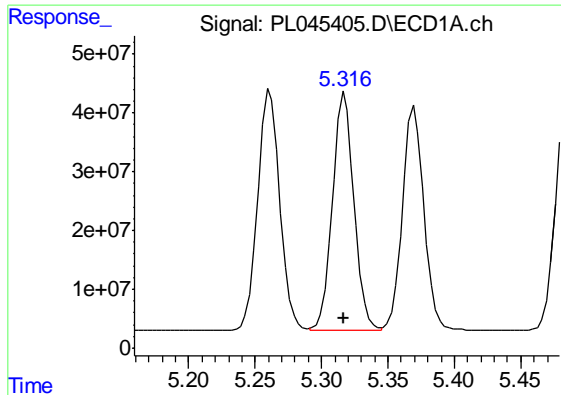
#10 gamma-Chlordane

R.T.: 5.261 min
 Delta R.T.: 0.000 min
 Response: 465906069
 Conc: 47.60 ng/ml



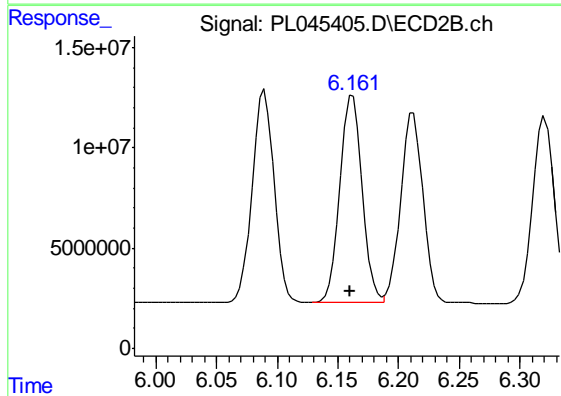
#10 gamma-Chlordane

R.T.: 6.090 min
 Delta R.T.: 0.002 min
 Response: 133289558
 Conc: 49.68 ng/ml

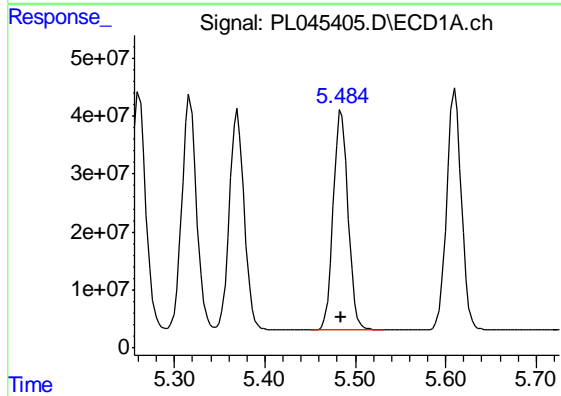


#11 alpha-Chlordane
 R.T.: 5.318 min
 Delta R.T.: 0.001 min
 Response: 458437449
 Conc: 47.28 ng/ml

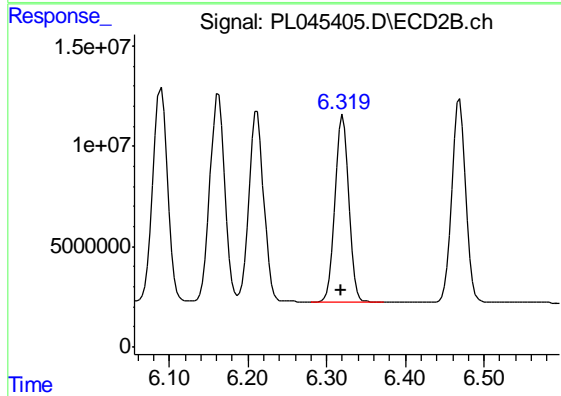
Instrument :
 ECD_L
 ClientSampled :
 PB117571BS



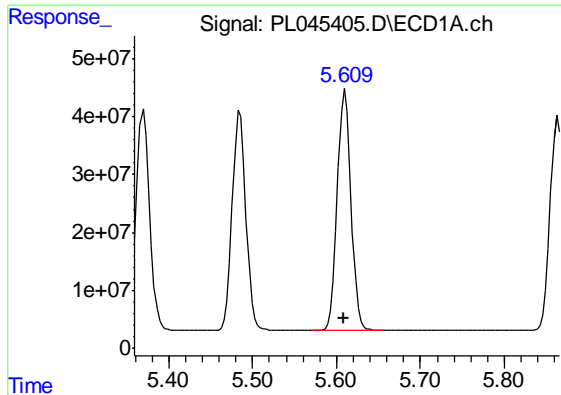
#11 alpha-Chlordane
 R.T.: 6.162 min
 Delta R.T.: 0.002 min
 Response: 132305562
 Conc: 49.04 ng/ml



#12 4,4'-DDE
 R.T.: 5.485 min
 Delta R.T.: 0.000 min
 Response: 428085454
 Conc: 48.77 ng/ml



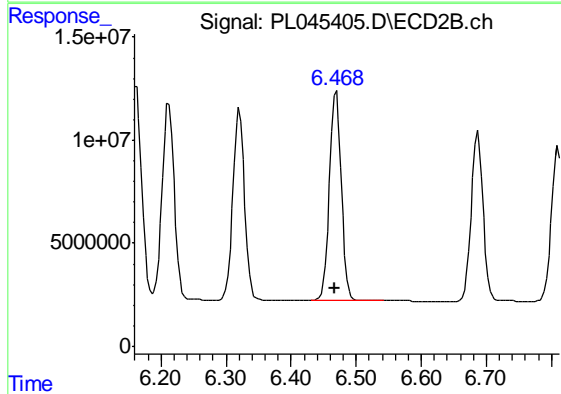
#12 4,4'-DDE
 R.T.: 6.321 min
 Delta R.T.: 0.003 min
 Response: 116105889
 Conc: 49.70 ng/ml



#13 Dieldrin

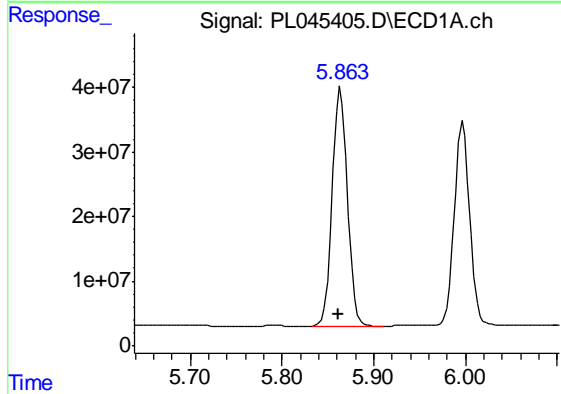
R.T.: 5.610 min
 Delta R.T.: 0.001 min
 Response: 473010646
 Conc: 49.49 ng/ml

Instrument :
 ECD_L
 ClientSampleId :
 PB117571BS



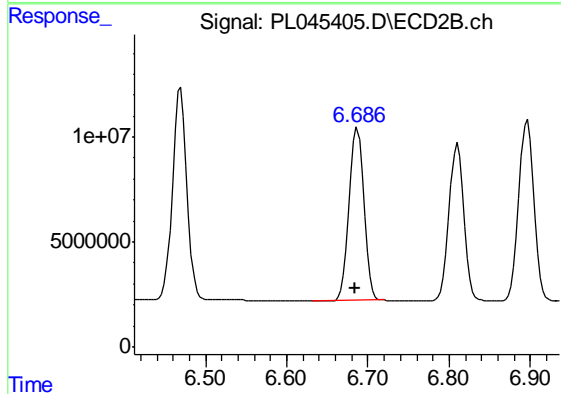
#13 Dieldrin

R.T.: 6.469 min
 Delta R.T.: 0.002 min
 Response: 126482408
 Conc: 49.22 ng/ml



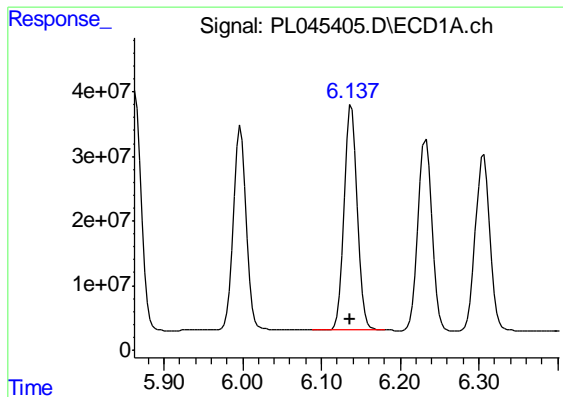
#14 Endrin

R.T.: 5.864 min
 Delta R.T.: 0.002 min
 Response: 428958973
 Conc: 47.63 ng/ml



#14 Endrin

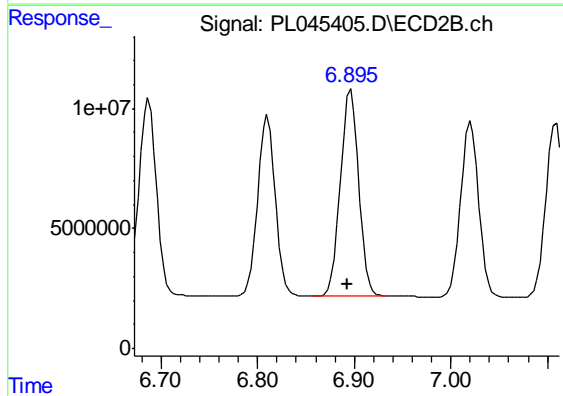
R.T.: 6.687 min
 Delta R.T.: 0.003 min
 Response: 104032434
 Conc: 45.72 ng/ml



#15 Endosulfan II

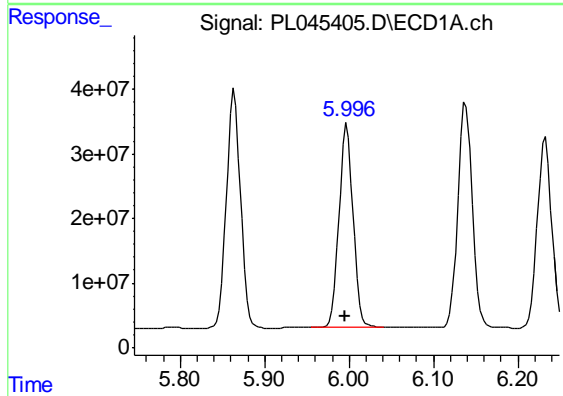
R.T.: 6.138 min
 Delta R.T.: 0.002 min
 Response: 414223567
 Conc: 47.78 ng/ml

Instrument :
 ECD_L
 ClientSampleId :
 PB117571BS



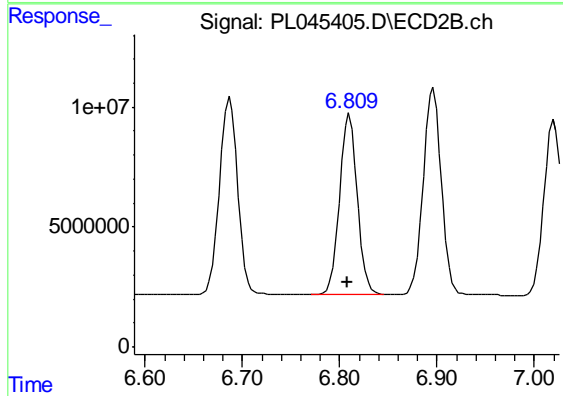
#15 Endosulfan II

R.T.: 6.896 min
 Delta R.T.: 0.003 min
 Response: 112180893
 Conc: 47.70 ng/ml



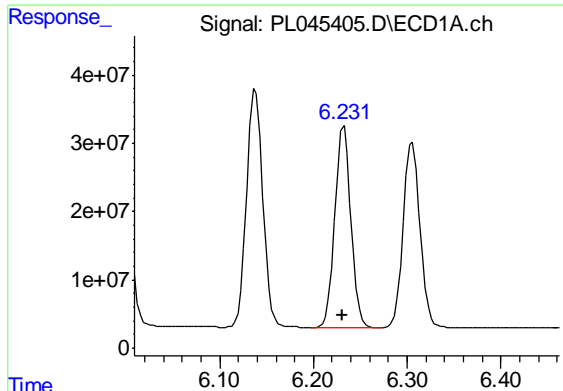
#16 4,4'-DDD

R.T.: 5.997 min
 Delta R.T.: 0.002 min
 Response: 363780346
 Conc: 49.68 ng/ml



#16 4,4'-DDD

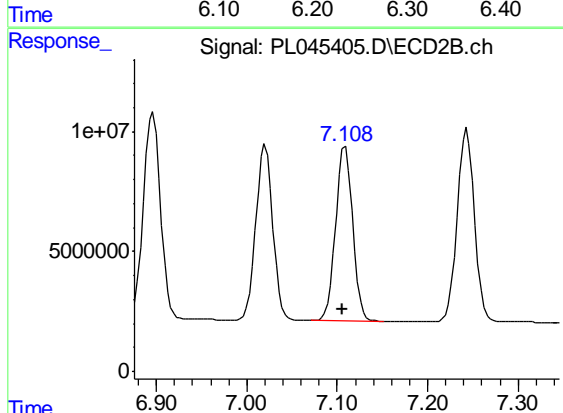
R.T.: 6.810 min
 Delta R.T.: 0.002 min
 Response: 95020549
 Conc: 49.41 ng/ml



#17 4,4'-DDT

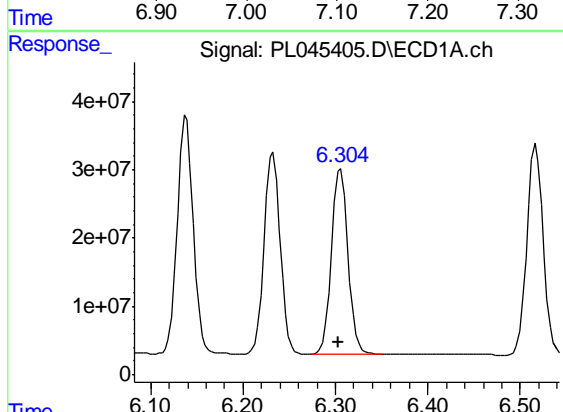
R.T.: 6.233 min
 Delta R.T.: 0.002 min
 Response: 353064861
 Conc: 47.07 ng/ml

Instrument :
 ECD_L
 ClientSampleId :
 PB117571BS



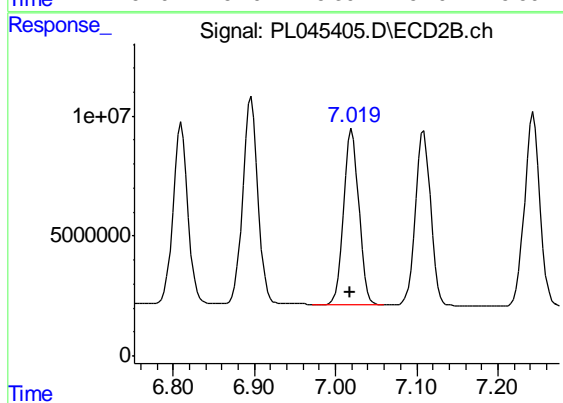
#17 4,4'-DDT

R.T.: 7.109 min
 Delta R.T.: 0.003 min
 Response: 94066938
 Conc: 47.67 ng/ml



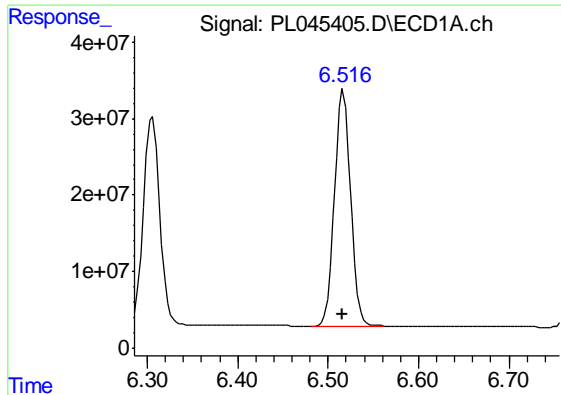
#18 Endrin aldehyde

R.T.: 6.306 min
 Delta R.T.: 0.002 min
 Response: 338463598
 Conc: 46.30 ng/ml



#18 Endrin aldehyde

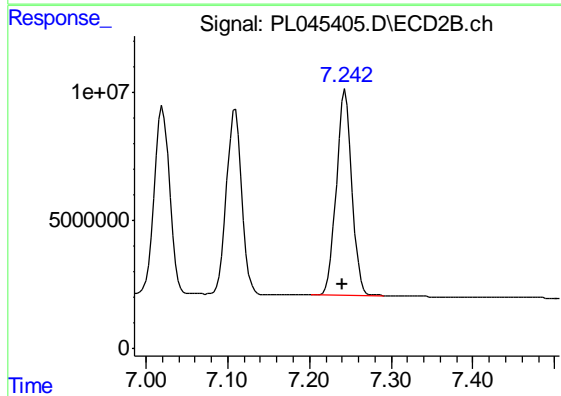
R.T.: 7.021 min
 Delta R.T.: 0.003 min
 Response: 95555857
 Conc: 46.74 ng/ml



#19 Endosulfan Sulfate

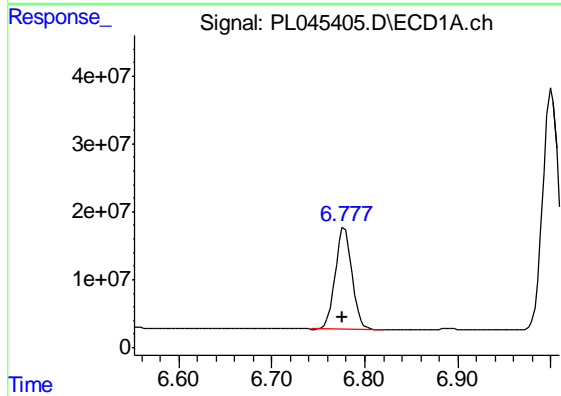
R.T.: 6.517 min
 Delta R.T.: 0.002 min
 Response: 377961618
 Conc: 46.50 ng/ml

Instrument :
 ECD_L
 ClientSampleId :
 PB117571BS



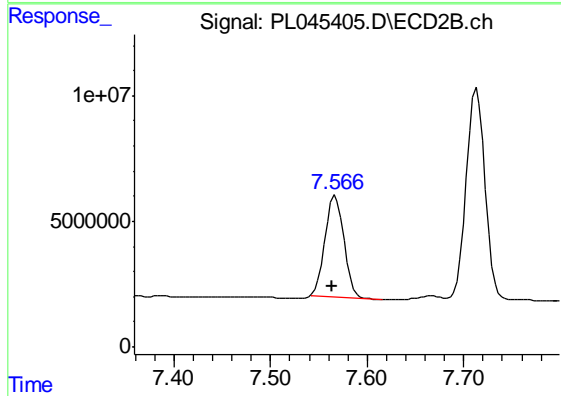
#19 Endosulfan Sulfate

R.T.: 7.244 min
 Delta R.T.: 0.003 min
 Response: 106674293
 Conc: 47.42 ng/ml



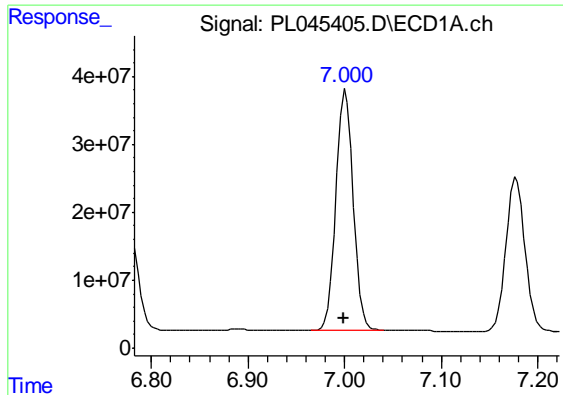
#20 Methoxychlor

R.T.: 6.778 min
 Delta R.T.: 0.002 min
 Response: 187299388
 Conc: 42.65 ng/ml



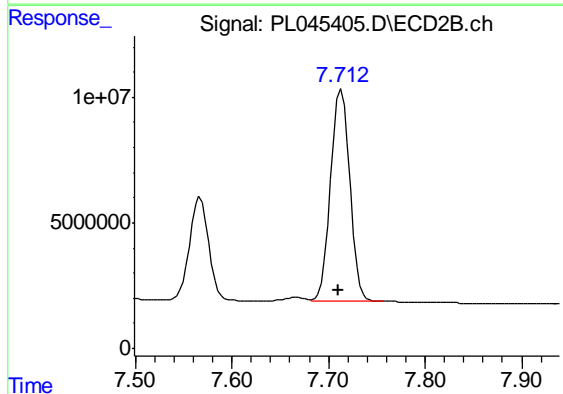
#20 Methoxychlor

R.T.: 7.567 min
 Delta R.T.: 0.003 min
 Response: 54330016
 Conc: 44.26 ng/ml

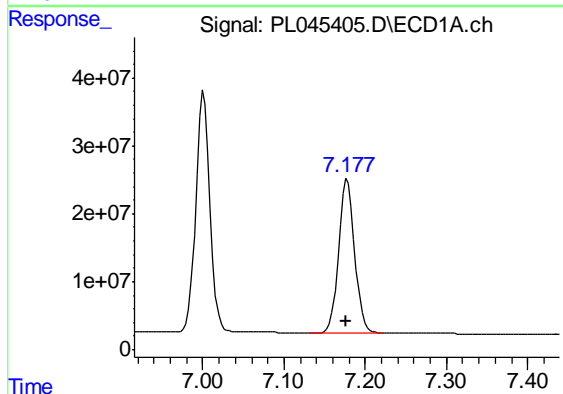


#21 Endrin ketone
 R.T.: 7.001 min
 Delta R.T.: 0.002 min
 Response: 430254709
 Conc: 46.70 ng/ml

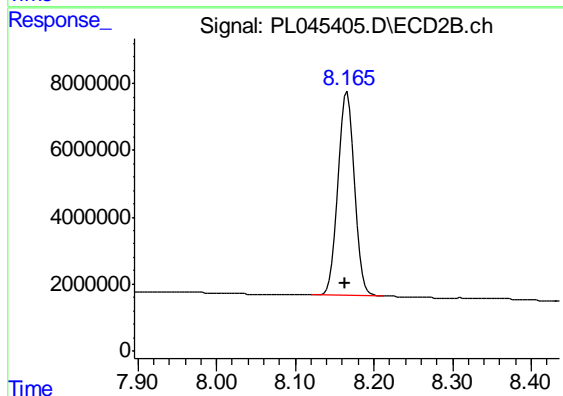
Instrument :
 ECD_L
 ClientSampled :
 PB117571BS



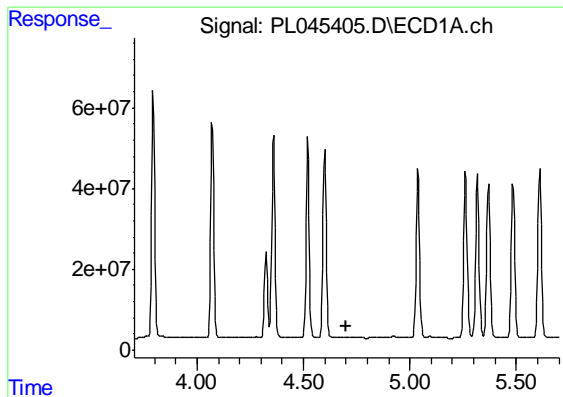
#21 Endrin ketone
 R.T.: 7.713 min
 Delta R.T.: 0.004 min
 Response: 114714635
 Conc: 48.23 ng/ml



#22 Mirex
 R.T.: 7.178 min
 Delta R.T.: 0.002 min
 Response: 311638751
 Conc: 41.89 ng/ml



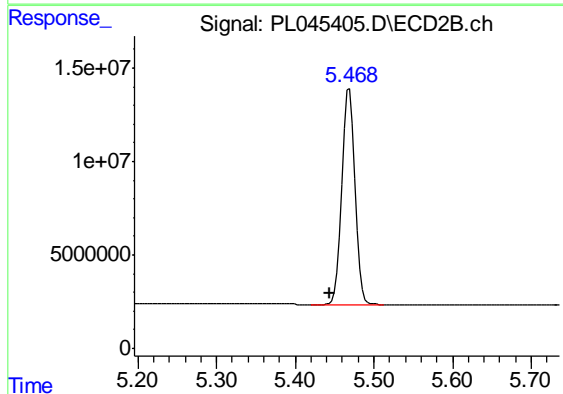
#22 Mirex
 R.T.: 8.166 min
 Delta R.T.: 0.003 min
 Response: 90947788
 Conc: 45.66 ng/ml



#24 Chlordane-2

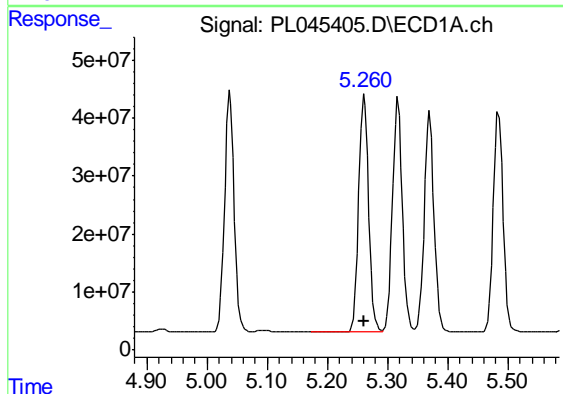
R.T.: 0.000 min
 Exp R.T. : 4.704 min
 Response: 0
 Conc: N.D.

Instrument :
 ECD_L
 ClientSampled :
 PB117571BS



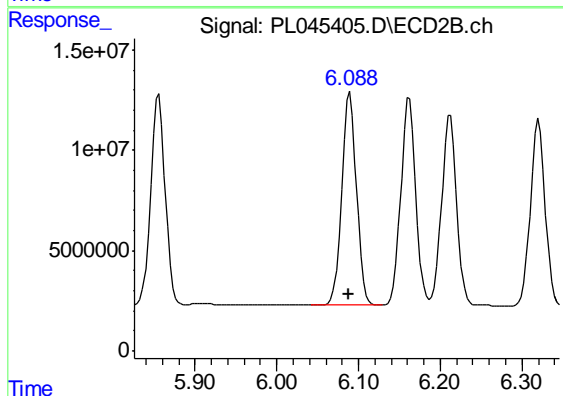
#24 Chlordane-2

R.T.: 5.469 min
 Delta R.T.: 0.026 min
 Response: 137422731
 Conc: 1137.32 ng/ml



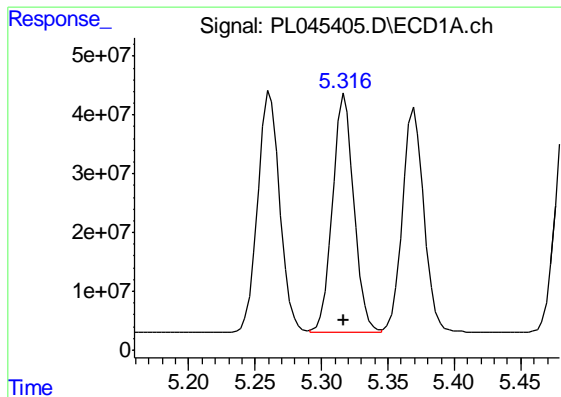
#25 Chlordane-3

R.T.: 5.261 min
 Delta R.T.: 0.000 min
 Response: 465906069
 Conc: 406.19 ng/ml



#25 Chlordane-3

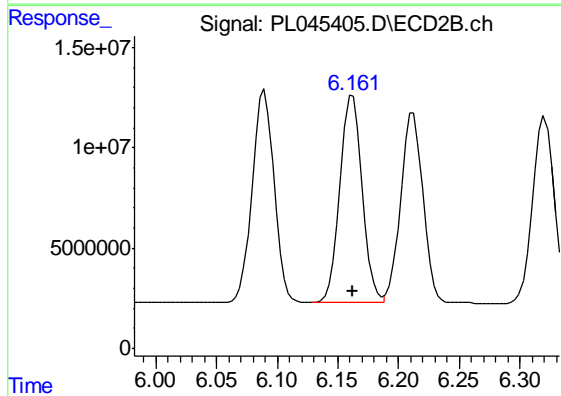
R.T.: 6.090 min
 Delta R.T.: 0.001 min
 Response: 133289558
 Conc: 342.09 ng/ml



#26 Chlordane-4

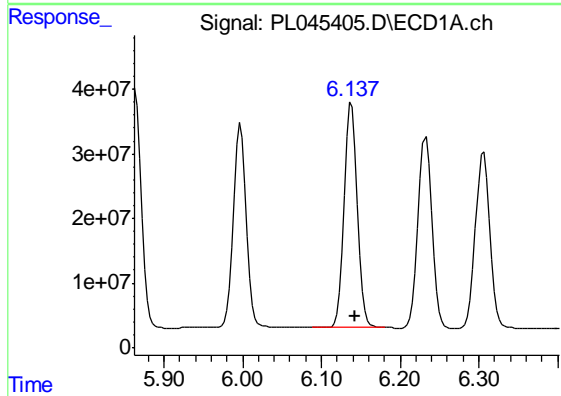
R.T.: 5.318 min
 Delta R.T.: 0.000 min
 Response: 458437449
 Conc: 432.47 ng/ml

Instrument :
 ECD_L
 ClientSampled :
 PB117571BS



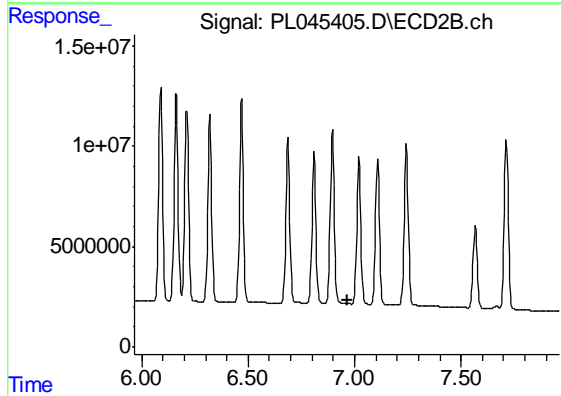
#26 Chlordane-4

R.T.: 6.162 min
 Delta R.T.: 0.000 min
 Response: 132305562
 Conc: 282.81 ng/ml



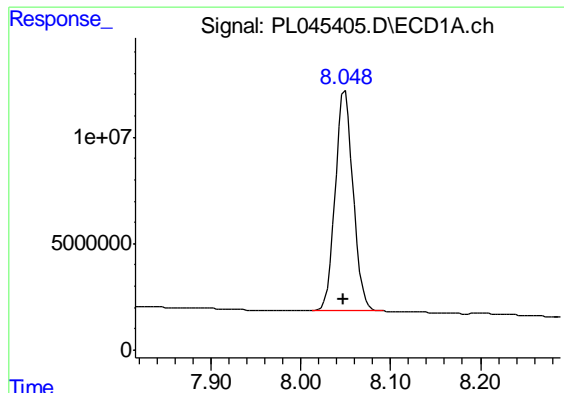
#27 Chlordane-5

R.T.: 6.138 min
 Delta R.T.: -0.004 min
 Response: 414223567
 Conc: 1199.44 ng/ml



#27 Chlordane-5

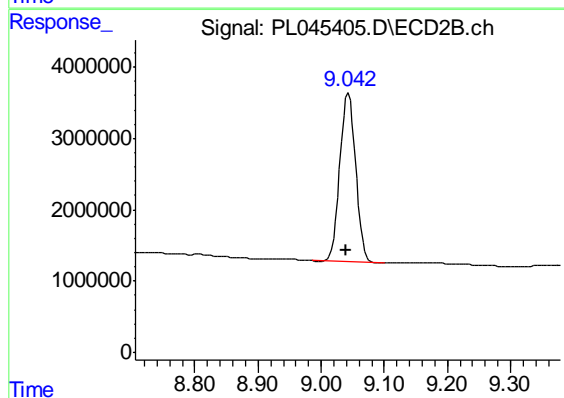
R.T.: 0.000 min
 Exp R.T. : 6.966 min
 Response: 0
 Conc: N.D.



#28 Decachlorobiphenyl

R.T.: 8.049 min
Delta R.T.: 0.002 min
Response: 143281906
Conc: 17.12 ng/ml

Instrument :
ECD_L
ClientSampleId :
PB117571BS



#28 Decachlorobiphenyl

R.T.: 9.043 min
Delta R.T.: 0.005 min
Response: 41256014
Conc: 18.06 ng/ml