

Data Path : Z:\pestpcbsrv\HPCHEM1\ECD\_L\Data\PL030419\  
 Data File : PL045423.D  
 Signal(s) : Signal #1: ECD1A.ch Signal #2: ECD2B.ch  
 Acq On : 04 Mar 2019 21:34  
 Operator : AJ\SJ  
 Sample : K1714-14  
 Misc :  
 ALS Vial : 48 Sample Multiplier: 1

Instrument :  
 ECD\_L  
 ClientSampleId :  
 SB-C-2-5

Integration File signal 1: autoint1.e  
 Integration File signal 2: autoint2.e  
 Quant Time: Mar 05 03:13:02 2019  
 Quant Method : Z:\pestpcbsrv\HPCHEM1\ECD\_L\methods\PL022719.M  
 Quant Title : GC Extractables  
 QLast Update : Wed Feb 27 17:00:03 2019  
 Response via : Initial Calibration  
 Integrator: ChemStation

Volume Inj. : 1 µl  
 Signal #1 Phase : ZB-MR2 Signal #2 Phase: ZB-MR1  
 Signal #1 Info : 30M x 0.32mm x0.2 Signal #2 Info : 30M x 0.32mm x0.5µm

Compound	RT#1	RT#2	Resp#1	Resp#2	ng/ml	ng/ml
-----						
System Monitoring Compounds						
1) SA Tetrachlo...	3.364	3.983	135.3E6	43016044	19.670	20.087
28) SA Decachlor...	8.048	9.041	148.7E6	42798190	17.777	18.731

Target Compounds

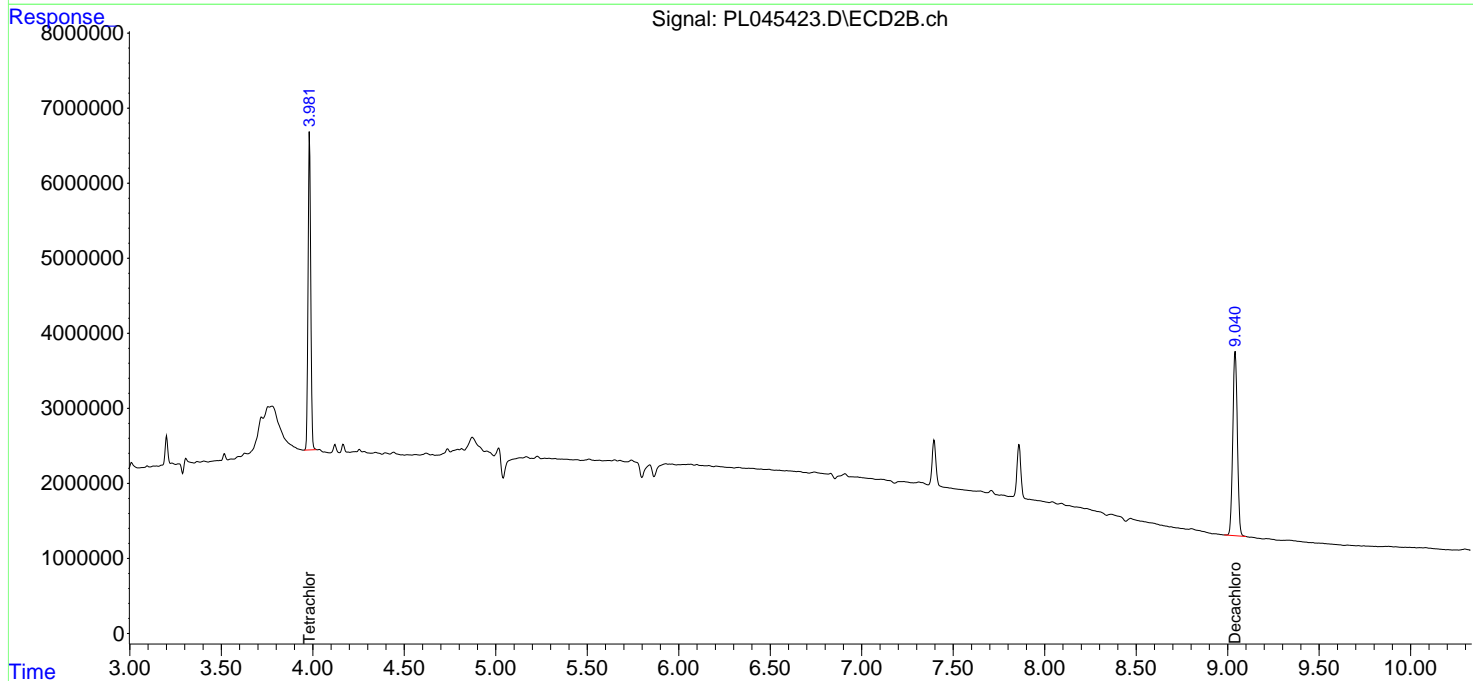
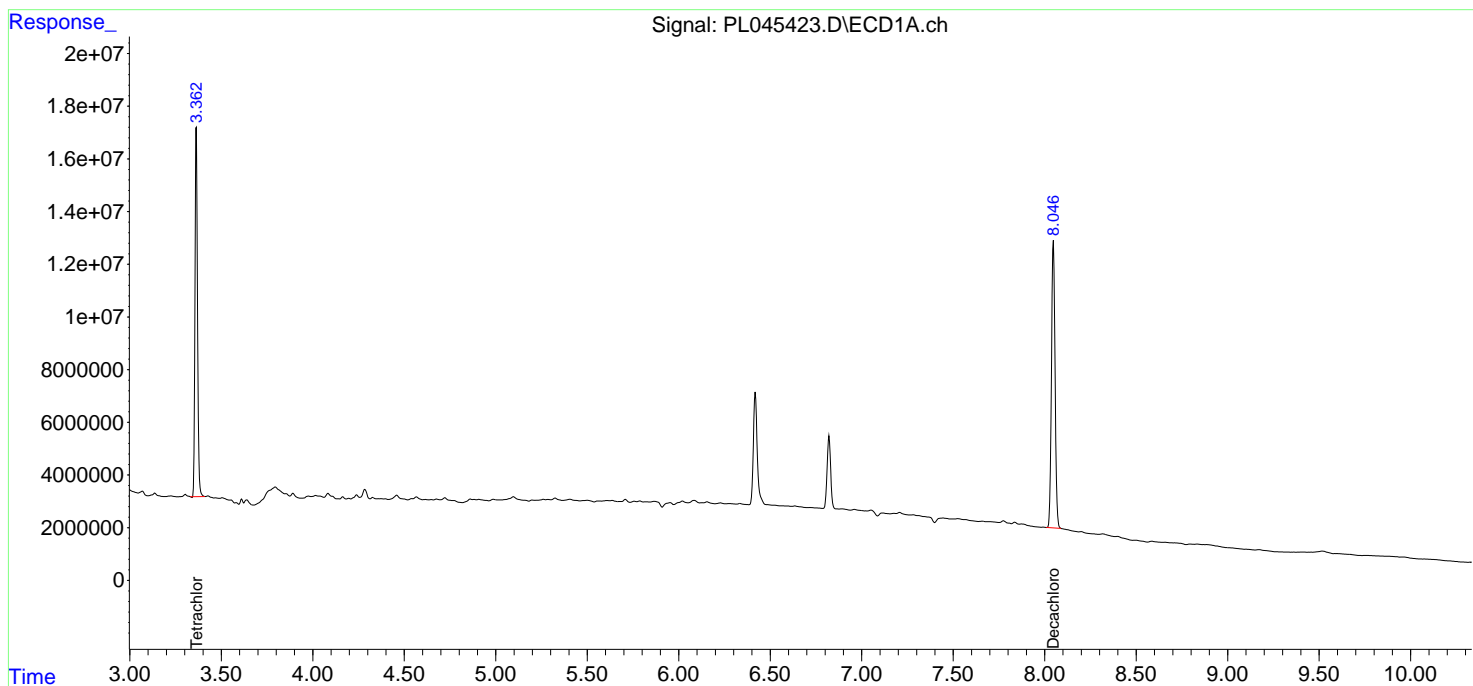
(f)=RT Delta > 1/2 Window (#)=Amounts differ by > 25% (m)=manual int.

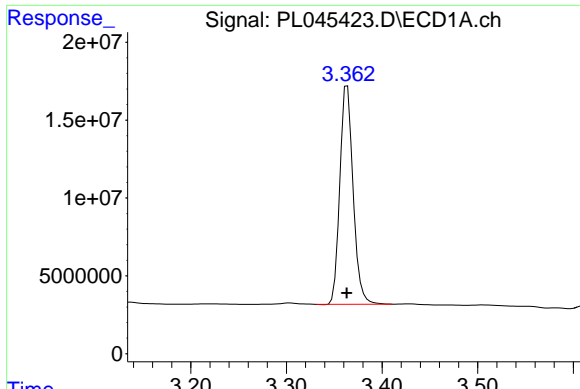
Data Path : Z:\pestpcbsrv\HPCHEM1\ECD\_L\Data\PL030419\  
 Data File : PL045423.D  
 Signal(s) : Signal #1: ECD1A.ch Signal #2: ECD2B.ch  
 Acq On : 04 Mar 2019 21:34  
 Operator : AJ\SJ  
 Sample : K1714-14  
 Misc :  
 ALS Vial : 48 Sample Multiplier: 1

Instrument :  
 ECD\_L  
 ClientSampled :  
 SB-C-2-5

Integration File signal 1: autoint1.e  
 Integration File signal 2: autoint2.e  
 Quant Time: Mar 05 03:13:02 2019  
 Quant Method : Z:\pestpcbsrv\HPCHEM1\ECD\_L\methods\PL022719.M  
 Quant Title : GC Extractables  
 QLast Update : Wed Feb 27 17:00:03 2019  
 Response via : Initial Calibration  
 Integrator: ChemStation

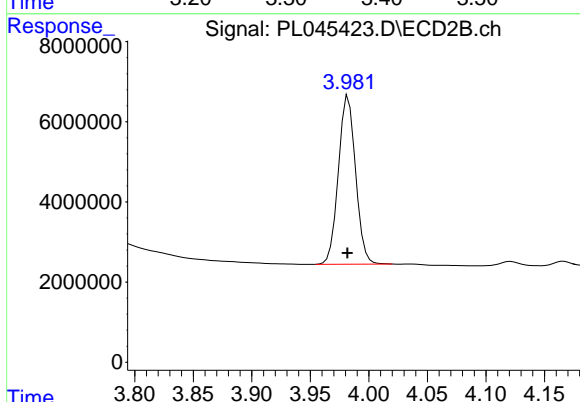
Volume Inj. : 1 µl  
 Signal #1 Phase : ZB-MR2 Signal #2 Phase: ZB-MR1  
 Signal #1 Info : 30M x 0.32mm x0.2 Signal #2 Info : 30M x 0.32mm x0.5µm



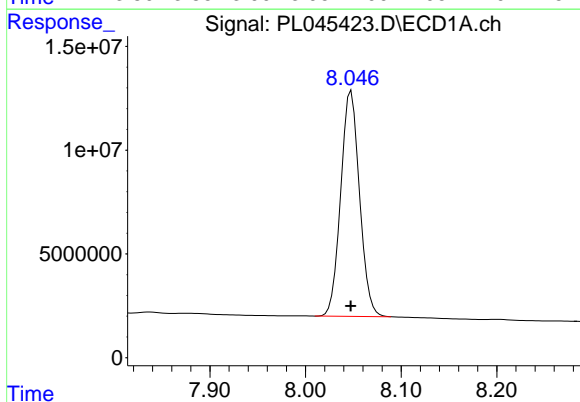


#1 Tetrachloro-m-xylene  
 R.T.: 3.364 min  
 Delta R.T.: 0.000 min  
 Response: 135317897  
 Conc: 19.67 ng/ml

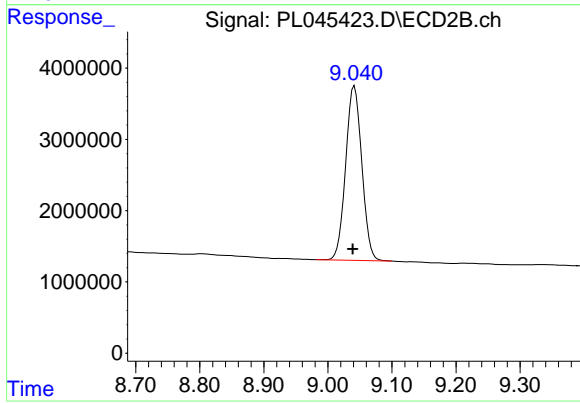
Instrument :  
 ECD\_L  
 ClientSampled :  
 SB-C-2-5



#1 Tetrachloro-m-xylene  
 R.T.: 3.983 min  
 Delta R.T.: 0.000 min  
 Response: 43016044  
 Conc: 20.09 ng/ml



#28 Decachlorobiphenyl  
 R.T.: 8.048 min  
 Delta R.T.: 0.000 min  
 Response: 148746740  
 Conc: 17.78 ng/ml



#28 Decachlorobiphenyl  
 R.T.: 9.041 min  
 Delta R.T.: 0.002 min  
 Response: 42798190  
 Conc: 18.73 ng/ml