

Data Path : Z:\pestpcbsrv\HPCHEM1\ECD\_L\Data\PL030520\  
 Data File : PL057091.D  
 Signal(s) : Signal #1: ECD1A.ch Signal #2: ECD2B.ch  
 Acq On : 05 Mar 2020 16:56  
 Operator : AJ\MA  
 Sample : L1778-21  
 Misc :  
 ALS Vial : 18 Sample Multiplier: 1

Instrument :  
 ECD\_L  
 ClientSampleId :  
 S10

Integration File signal 1: autoint1.e  
 Integration File signal 2: autoint2.e  
 Quant Time: Mar 06 03:16:51 2020  
 Quant Method : Z:\pestpcbsrv\HPCHEM1\ECD\_L\methods\PL030320.M  
 Quant Title : GC Extractables  
 QLast Update : Wed Mar 04 03:55:01 2020  
 Response via : Initial Calibration  
 Integrator: ChemStation

Volume Inj. : 1 µl  
 Signal #1 Phase : ZB-MR2 Signal #2 Phase: ZB-MR1  
 Signal #1 Info : 30M x 0.32mm x0.2 Signal #2 Info : 30M x 0.32mm x0.5µm

	Compound	RT#1	RT#2	Resp#1	Resp#2	ng/ml	ng/ml
-----							
System Monitoring Compounds							
1)	SA Tetrachlo...	3.459	3.957	114.0E6	31284768	13.382	14.663
28)	SA Decachlor...	8.208	8.981	133.6E6	30871974	13.826	14.530
Target Compounds							
10)	B gamma-Chl...	5.419f	0.000	10880713	0	0.876	N.D. #
11)	B alpha-Chl...	0.000	6.124	0	4454985	N.D.	1.478 #
17)	MA 4,4'-DDT	6.373	0.000	9048626	0	0.925	N.D. #
20)	A Methoxychlor	6.905f	0.000	13144304	0	2.636	N.D. #
25)	Chlordane-3	5.419f	0.000	10880713	0	10.088	N.D. #
26)	Chlordane-4	0.000	6.124	0	4454985	N.D.	9.716 #
-----							

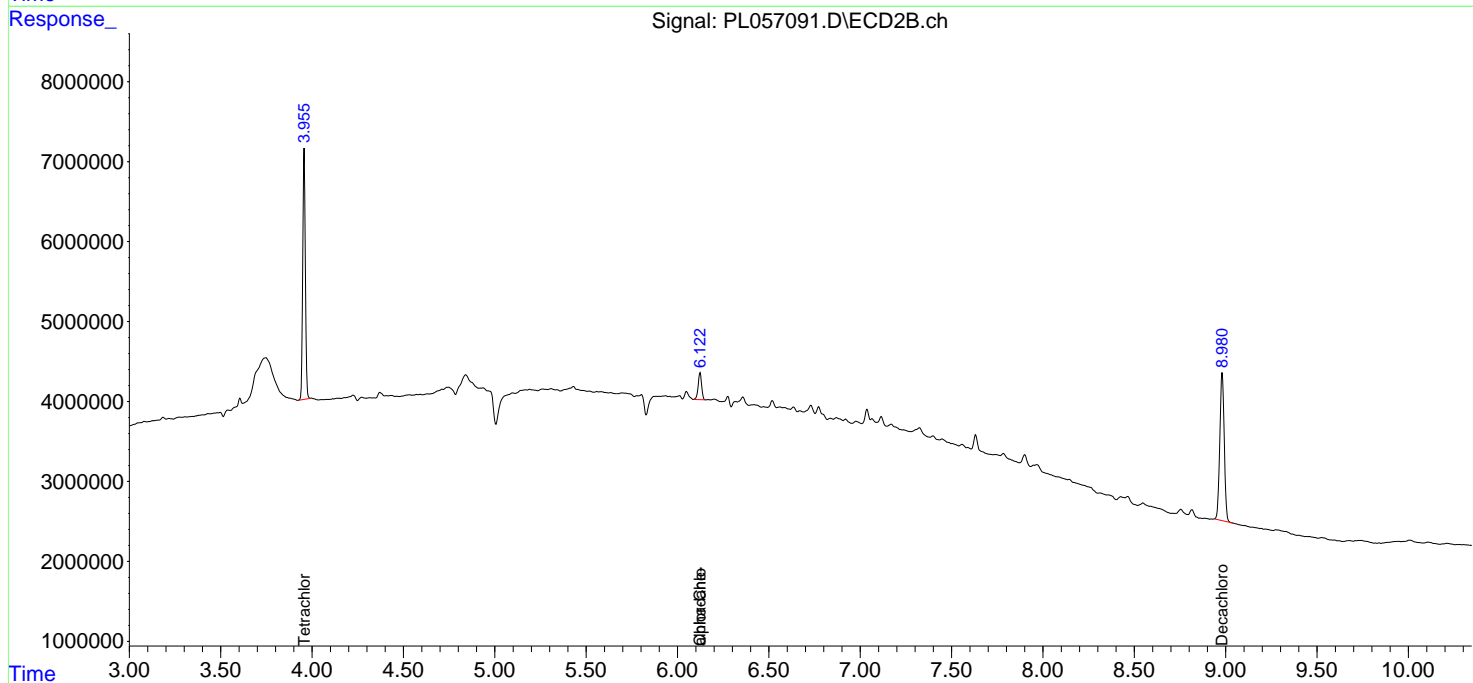
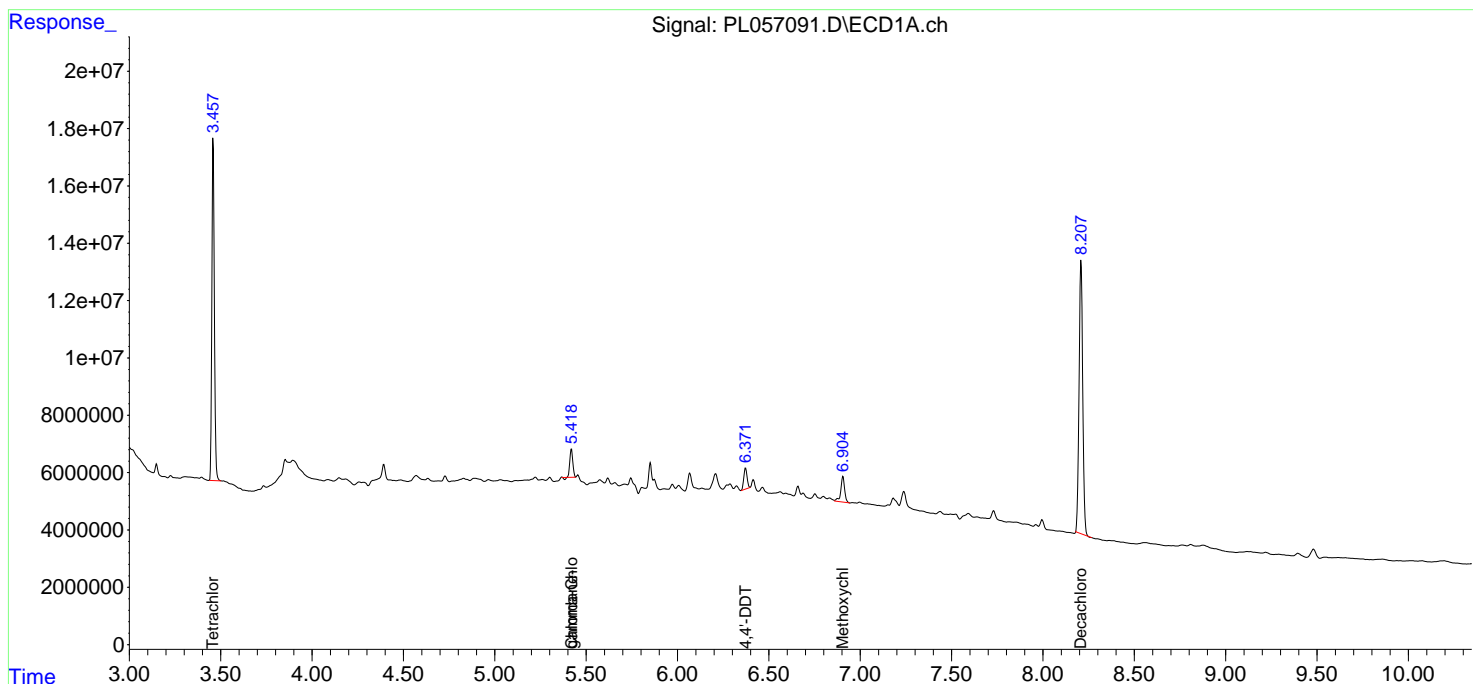
(f)=RT Delta > 1/2 Window (#)=Amounts differ by > 25% (m)=manual int.

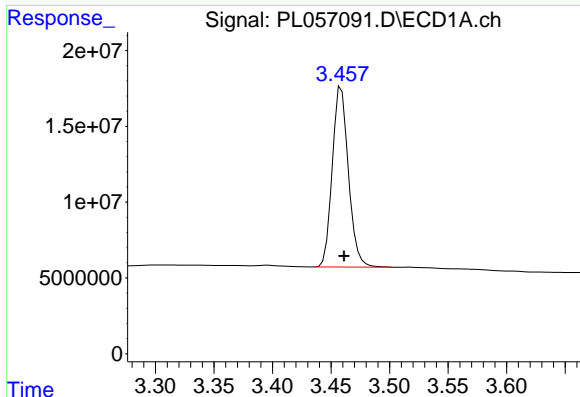
Data Path : Z:\pestpcbsrv\HPCHEM1\ECD\_L\Data\PL030520\  
 Data File : PL057091.D  
 Signal(s) : Signal #1: ECD1A.ch Signal #2: ECD2B.ch  
 Acq On : 05 Mar 2020 16:56  
 Operator : AJ\MA  
 Sample : L1778-21  
 Misc :  
 ALS Vial : 18 Sample Multiplier: 1

Instrument :  
 ECD\_L  
 ClientSampled :  
 S10

Integration File signal 1: autoint1.e  
 Integration File signal 2: autoint2.e  
 Quant Time: Mar 06 03:16:51 2020  
 Quant Method : Z:\pestpcbsrv\HPCHEM1\ECD\_L\methods\PL030320.M  
 Quant Title : GC Extractables  
 QLast Update : Wed Mar 04 03:55:01 2020  
 Response via : Initial Calibration  
 Integrator: ChemStation

Volume Inj. : 1 µl  
 Signal #1 Phase : ZB-MR2 Signal #2 Phase: ZB-MR1  
 Signal #1 Info : 30M x 0.32mm x0.2 Signal #2 Info : 30M x 0.32mm x0.5µm

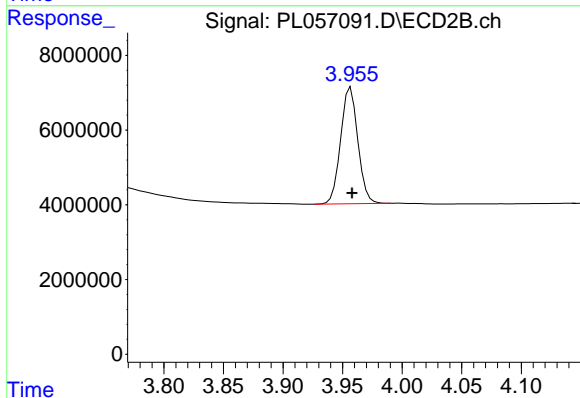




#1 Tetrachloro-m-xylene

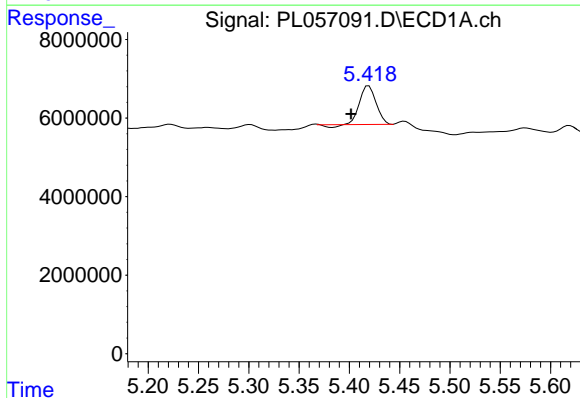
R.T.: 3.459 min  
 Delta R.T.: -0.002 min  
 Response: 114044019  
 Conc: 13.38 ng/ml

Instrument :  
 ECD\_L  
 ClientSampleId :  
 S10



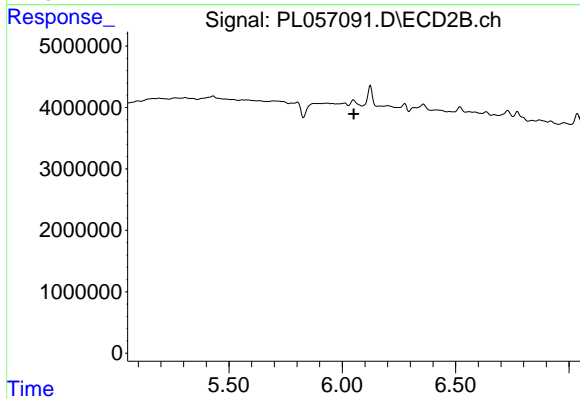
#1 Tetrachloro-m-xylene

R.T.: 3.957 min  
 Delta R.T.: -0.001 min  
 Response: 31284768  
 Conc: 14.66 ng/ml



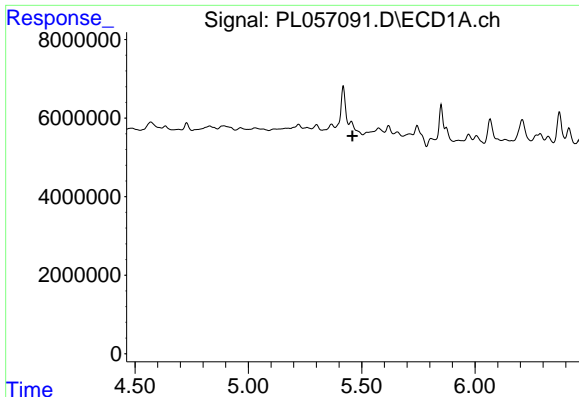
#10 gamma-Chlordane

R.T.: 5.419 min  
 Delta R.T.: 0.018 min  
 Response: 10880713  
 Conc: 0.88 ng/ml



#10 gamma-Chlordane

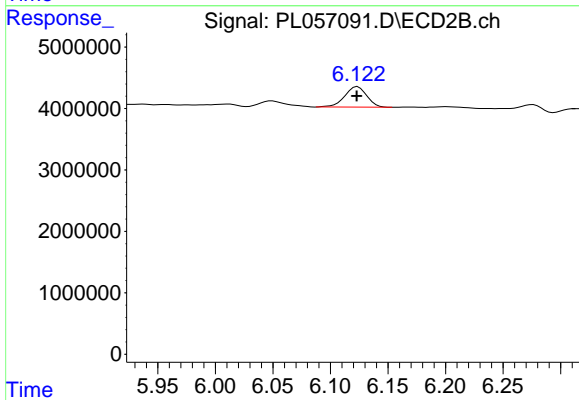
R.T.: 0.000 min  
 Exp R.T. : 6.051 min  
 Response: 0  
 Conc: N.D.



#11 alpha-Chlordane

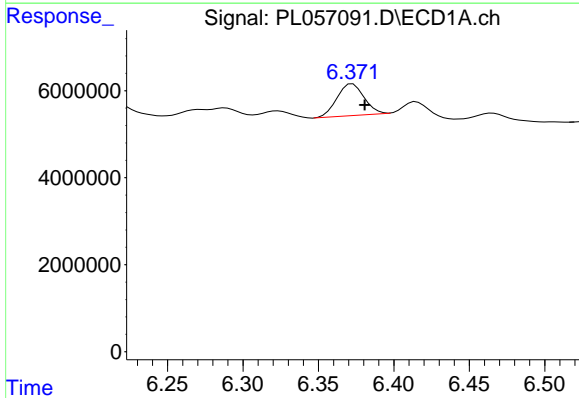
R.T.: 0.000 min  
 Exp R.T.: 5.460 min  
 Response: 0  
 Conc: N.D.

Instrument :  
 ECD\_L  
 ClientSampled :  
 S10



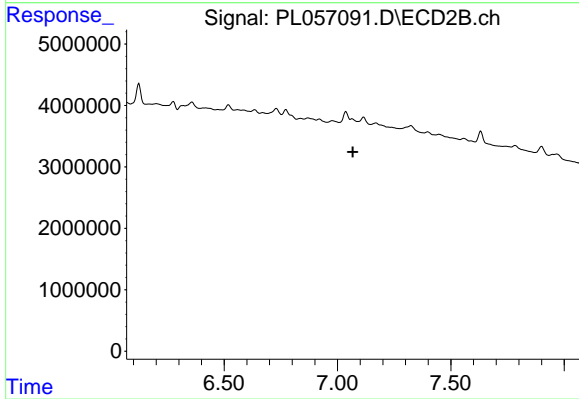
#11 alpha-Chlordane

R.T.: 6.124 min  
 Delta R.T.: 0.000 min  
 Response: 4454985  
 Conc: 1.48 ng/ml



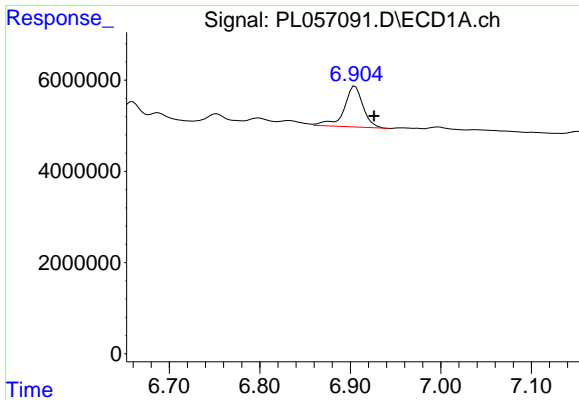
#17 4,4'-DDT

R.T.: 6.373 min  
 Delta R.T.: -0.008 min  
 Response: 9048626  
 Conc: 0.92 ng/ml



#17 4,4'-DDT

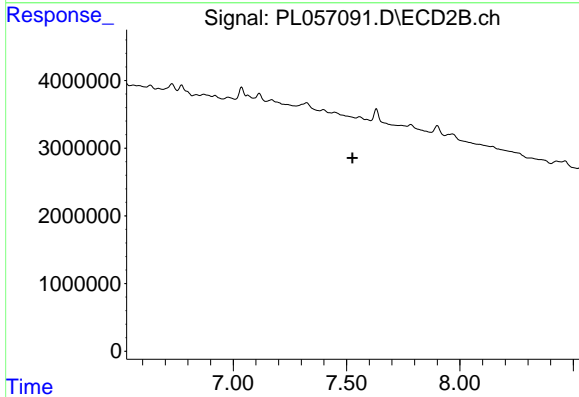
R.T.: 0.000 min  
 Exp R.T.: 7.068 min  
 Response: 0  
 Conc: N.D.



#20 Methoxychlor

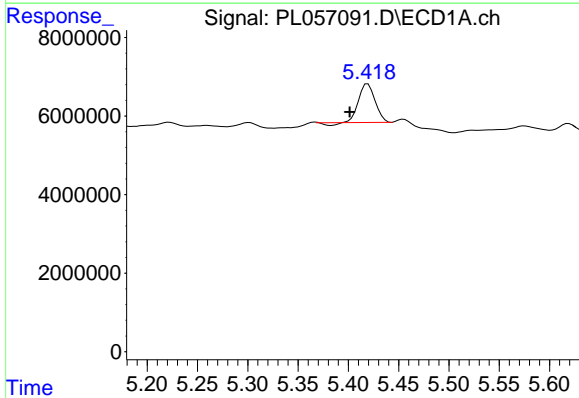
R.T.: 6.905 min  
 Delta R.T.: -0.021 min  
 Response: 13144304  
 Conc: 2.64 ng/ml

Instrument :  
 ECD\_L  
 ClientSampled :  
 S10



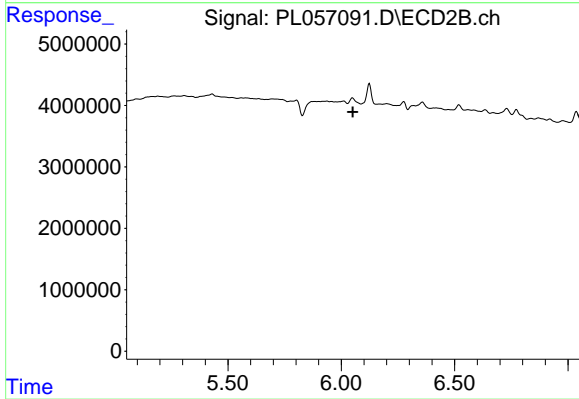
#20 Methoxychlor

R.T.: 0.000 min  
 Exp R.T. : 7.527 min  
 Response: 0  
 Conc: N.D.



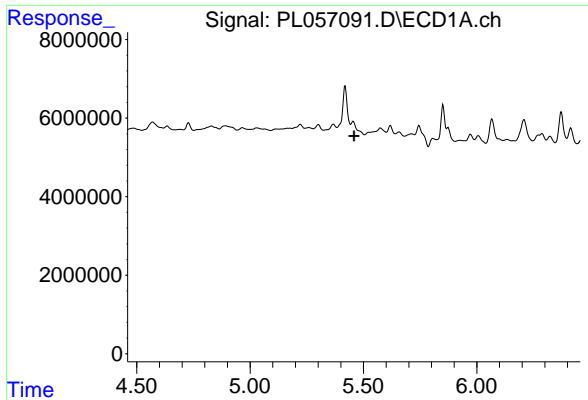
#25 Chlordane-3

R.T.: 5.419 min  
 Delta R.T.: 0.018 min  
 Response: 10880713  
 Conc: 10.09 ng/ml



#25 Chlordane-3

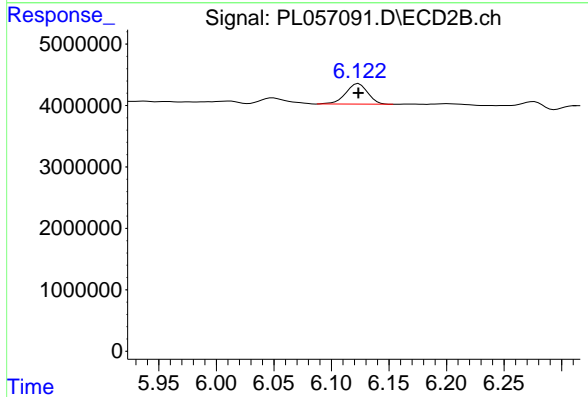
R.T.: 0.000 min  
 Exp R.T. : 6.050 min  
 Response: 0  
 Conc: N.D.



#26 Chlordane-4

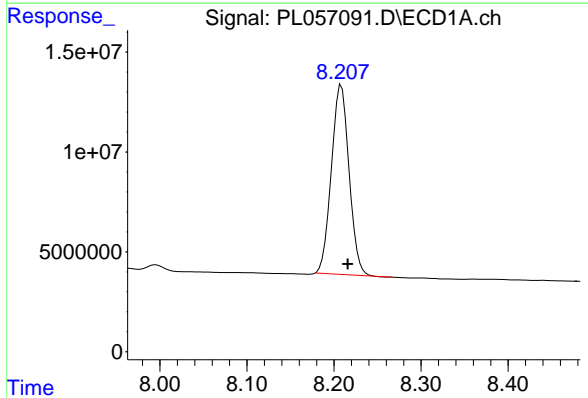
R.T.: 0.000 min  
 Exp R.T.: 5.459 min  
 Response: 0  
 Conc: N.D.

Instrument :  
 ECD\_L  
 ClientSampled :  
 S10



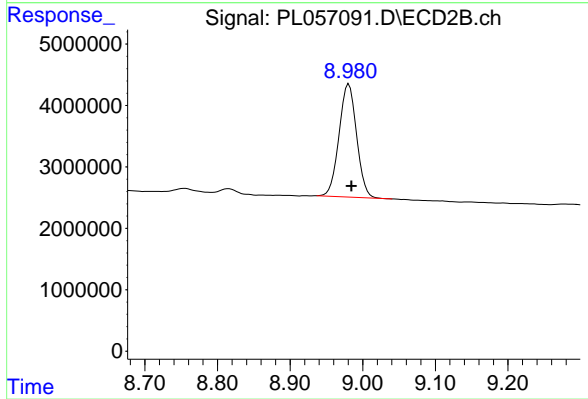
#26 Chlordane-4

R.T.: 6.124 min  
 Delta R.T.: 0.000 min  
 Response: 4454985  
 Conc: 9.72 ng/ml



#28 Decachlorobiphenyl

R.T.: 8.208 min  
 Delta R.T.: -0.007 min  
 Response: 133628360  
 Conc: 13.83 ng/ml



#28 Decachlorobiphenyl

R.T.: 8.981 min  
 Delta R.T.: -0.003 min  
 Response: 30871974  
 Conc: 14.53 ng/ml