

Data Path : Z:\pestpcbsrv\HPCHEM1\ECD_L\Data\PL030525\
 Data File : PL094509.D
 Signal(s) : Signal #1: ECD1A.ch Signal #2: ECD2B.ch
 Acq On : 05 Mar 2025 17:18
 Operator : AR\AJ
 Sample : Q1480-33
 Misc :
 ALS Vial : 14 Sample Multiplier: 1

Instrument :
 ECD_L
ClientSampleId :
 TP-3-WATER-SAMPLE

Integration File signal 1: autoint1.e
 Integration File signal 2: autoint2.e
 Quant Time: Mar 06 00:55:52 2025
 Quant Method : Z:\pestpcbsrv\HPCHEM1\ECD_L\methods\PL022125.M
 Quant Title : GC Extractables
 QLast Update : Fri Feb 21 14:52:19 2025
 Response via : Initial Calibration
 Integrator: ChemStation

Volume Inj. : 1 µl
 Signal #1 Phase : ZB-MR1 Signal #2 Phase: ZB-MR2
 Signal #1 Info : 30M x 0.32mm x0.5 Signal #2 Info : 30M x 0.32mm x0.25µm

Compound	RT#1	RT#2	Resp#1	Resp#2	ng/ml	ng/ml

System Monitoring Compounds						
1) SA Tetrachlo...	3.559f	2.770	58821071	78782280	23.166m	24.688m
28) SA Decachlor...	9.075f	7.904	42701472	72020997	20.073m	18.728m

Target Compounds

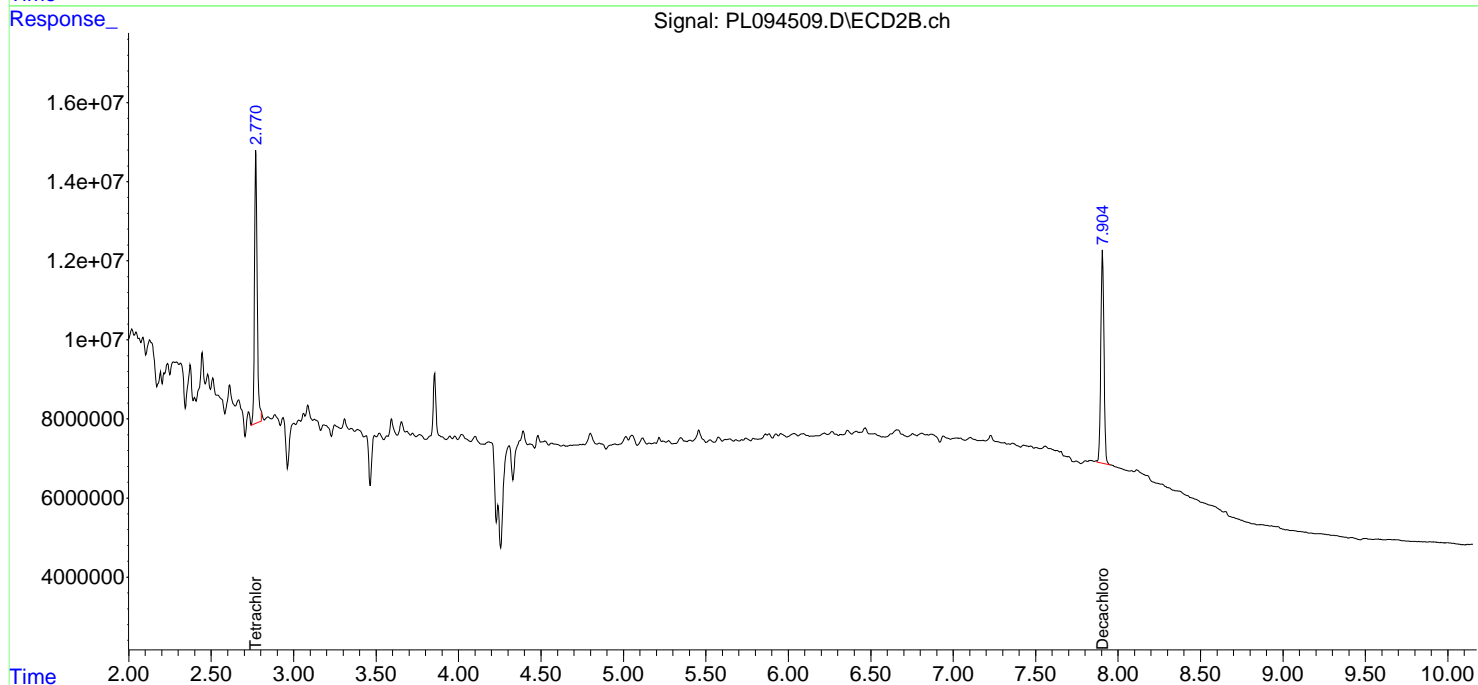
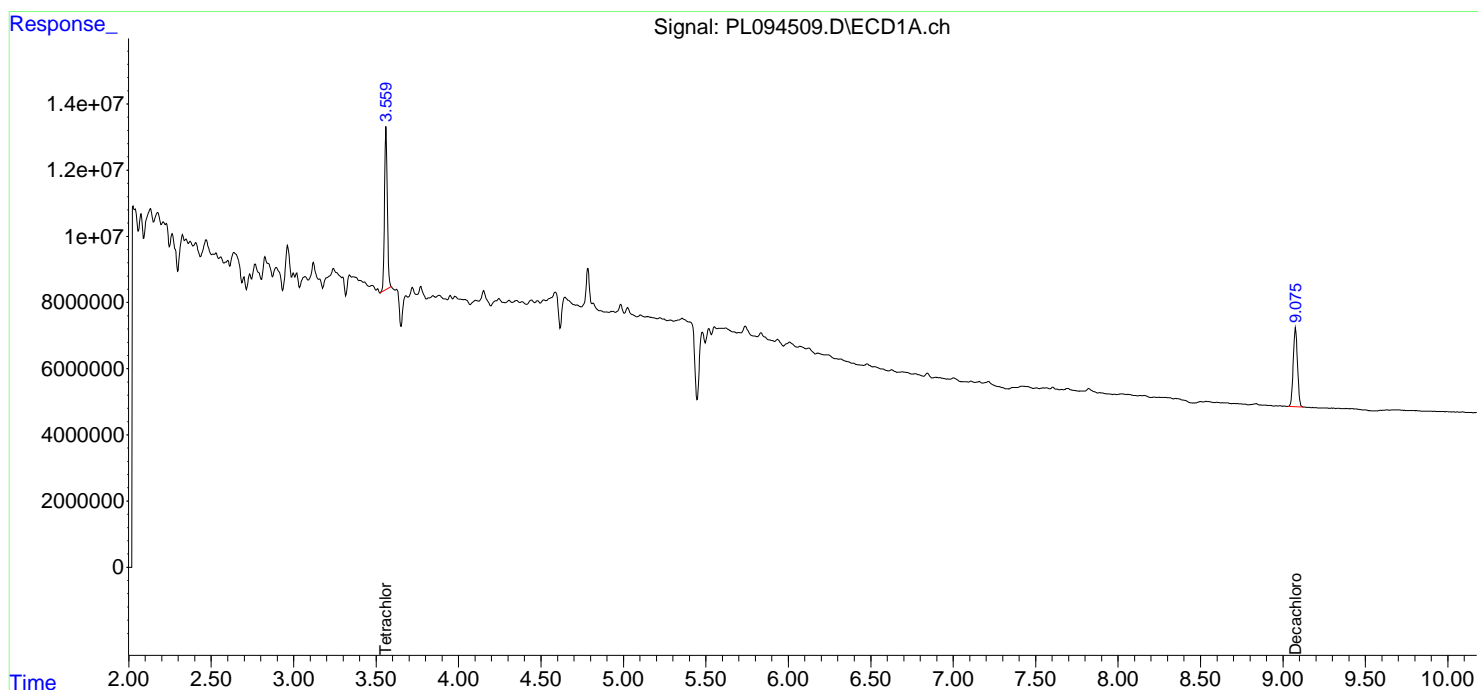
(f)=RT Delta > 1/2 Window (#)=Amounts differ by > 25% (m)=manual int.

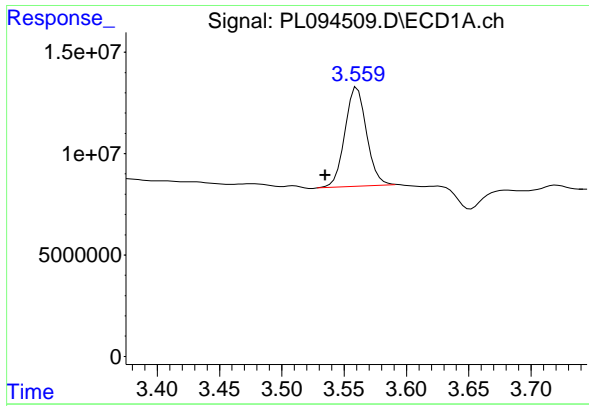
Data Path : Z:\pestpcbsrv\HPCHEM1\ECD_L\Data\PL030525\
Data File : PL094509.D
Signal(s) : Signal #1: ECD1A.ch Signal #2: ECD2B.ch
Acq On : 05 Mar 2025 17:18
Operator : AR\AJ
Sample : Q1480-33
Misc :
ALS Vial : 14 Sample Multiplier: 1

Instrument :
ECD_L
ClientSampleId :
TP-3-WATER-SAMPLE

Integration File signal 1: autoint1.e
Integration File signal 2: autoint2.e
Quant Time: Mar 06 00:55:52 2025
Quant Method : Z:\pestpcbsrv\HPCHEM1\ECD_L\methods\PL022125.M
Quant Title : GC Extractables
QLast Update : Fri Feb 21 14:52:19 2025
Response via : Initial Calibration
Integrator: ChemStation

Volume Inj. : 1 µl
Signal #1 Phase : ZB-MR1 Signal #2 Phase: ZB-MR2
Signal #1 Info : 30M x 0.32mm x0.5 Signal #2 Info : 30M x 0.32mm x0.25µm

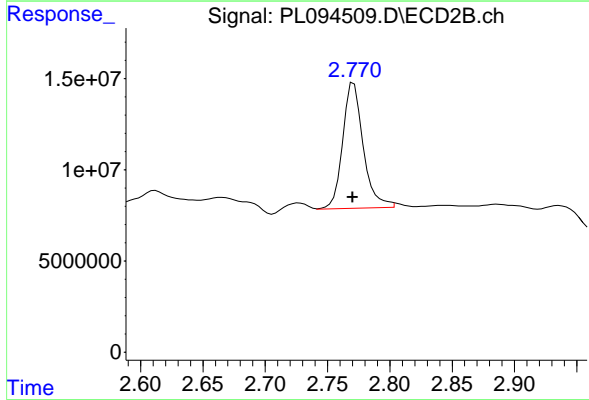




#1 Tetrachloro-m-xylene

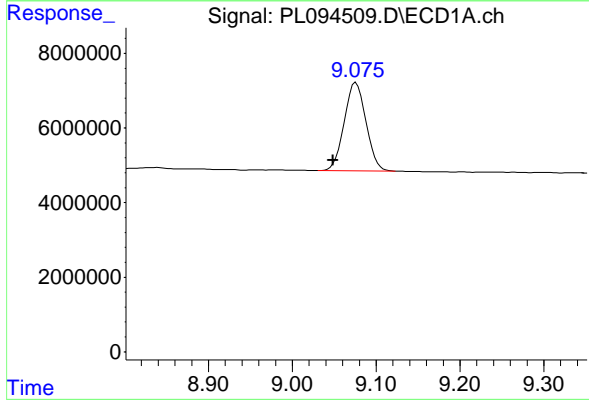
R.T.: 3.559 min
 Delta R.T.: 0.024 min
 Response: 58821071
 Conc: 23.17 ng/ml

Instrument :
 ECD_L
 ClientSampleId :
 TP-3-WATER-SAMPLE



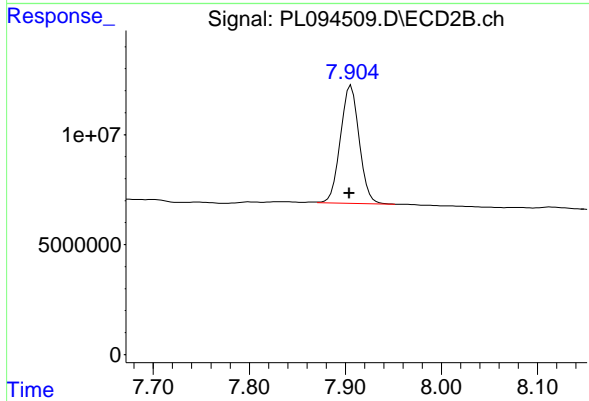
#1 Tetrachloro-m-xylene

R.T.: 2.770 min
 Delta R.T.: 0.000 min
 Response: 78782280
 Conc: 24.69 ng/ml m



#28 Decachlorobiphenyl

R.T.: 9.075 min
 Delta R.T.: 0.026 min
 Response: 42701472
 Conc: 20.07 ng/ml m



#28 Decachlorobiphenyl

R.T.: 7.904 min
 Delta R.T.: 0.000 min
 Response: 72020997
 Conc: 18.73 ng/ml m