

Data Path : Z:\pestpcbsrv\HPCHEM1\ECD\_L\Data\PL030525\  
 Data File : PL094517.D  
 Signal(s) : Signal #1: ECD1A.ch Signal #2: ECD2B.ch  
 Acq On : 05 Mar 2025 19:08  
 Operator : AR\AJ  
 Sample : Q1485-01MSD  
 Misc :  
 ALS Vial : 20 Sample Multiplier: 1

Instrument :  
 ECD\_L  
 ClientSampleId :  
 DN-B-41MSD

Integration File signal 1: autoint1.e  
 Integration File signal 2: autoint2.e  
 Quant Time: Mar 06 00:59:42 2025  
 Quant Method : Z:\pestpcbsrv\HPCHEM1\ECD\_L\methods\PL022125.M  
 Quant Title : GC Extractables  
 QLast Update : Fri Feb 21 14:52:19 2025  
 Response via : Initial Calibration  
 Integrator: ChemStation

Volume Inj. : 1 µl  
 Signal #1 Phase : ZB-MR1 Signal #2 Phase: ZB-MR2  
 Signal #1 Info : 30M x 0.32mm x0.5 Signal #2 Info : 30M x 0.32mm x0.25µm

Compound	RT#1	RT#2	Resp#1	Resp#2	ng/ml	ng/ml
-----						
System Monitoring Compounds						
1) SA Tetrachlo...	3.537	2.771	65413515	79431117	25.762	24.891
28) SA Decachlor...	9.053	7.906	47152251	70555513	22.166	18.347
Target Compounds						
2) A alpha-BHC	3.993	3.273	190.8E6	248.3E6	50.442	50.523
3) MA gamma-BHC...	4.325	3.603	183.9E6	237.3E6	49.782	50.375
4) MA Heptachlor	4.914	3.941	178.0E6	246.1E6	52.488	52.142
5) MB Aldrin	5.255	4.221	173.2E6	228.8E6	50.467	49.526
6) B beta-BHC	4.525	3.904	83468369	104.3E6	52.269	52.462
7) B delta-BHC	4.770	4.132	182.7E6	238.0E6	51.632m	50.263
8) B Heptachlo...	5.682	4.723	155.7E6	217.0E6	51.674	50.996
9) A Endosulfan I	6.066	5.092	144.0E6	199.8E6	52.379m	50.120m
10) B gamma-Chl...	5.938	4.973	153.4E6	229.5E6	52.246	52.896
11) B alpha-Chl...	6.017	5.037	152.8E6	225.6E6	52.751	52.251
12) B 4,4'-DDE	6.191	5.225	136.1E6	222.0E6	52.095	52.847
13) MA Dieldrin	6.343	5.357	151.1E6	232.7E6	53.024	53.116
14) MA Endrin	6.571	5.631	124.4E6	207.6E6	48.722m	60.969m#
15) B Endosulfa...	6.792	5.928	133.5E6	200.0E6	53.024m	53.472
16) A 4,4'-DDD	6.707	5.779	110.9E6	175.3E6	59.978m	55.033m
17) MA 4,4'-DDT	7.022	6.030	113.5E6	187.8E6	54.044	52.790
18) B Endrin al...	6.923	6.107	100.3E6	154.4E6	51.519	48.859
19) B Endosulfa...	7.156	6.330	121.8E6	203.7E6	53.787m	55.154
20) A Methoxychlor	7.499	6.606	65280904	94201449	58.756	48.283
21) B Endrin ke...	7.643	6.835	126.7E6	216.1E6	50.547	50.646
22) Mirex	8.115	7.014	90442707	160.0E6	43.834	45.894

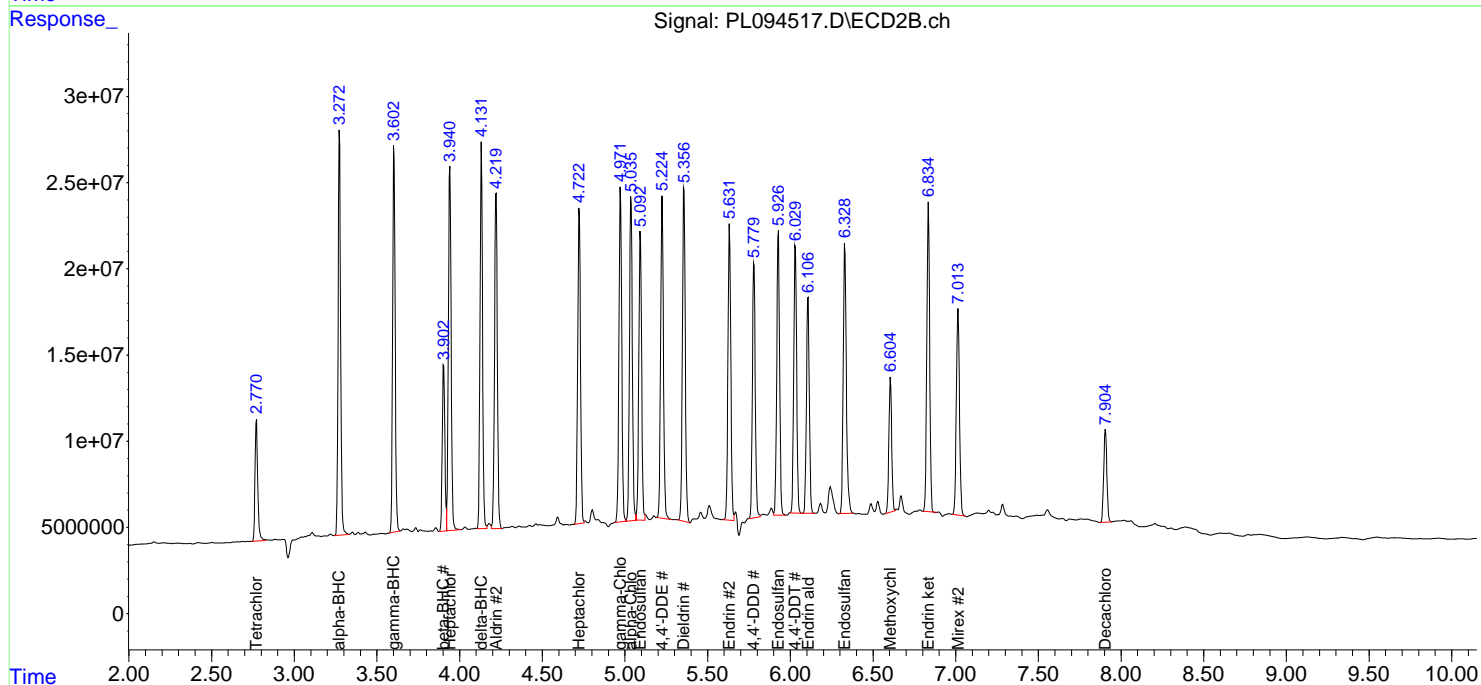
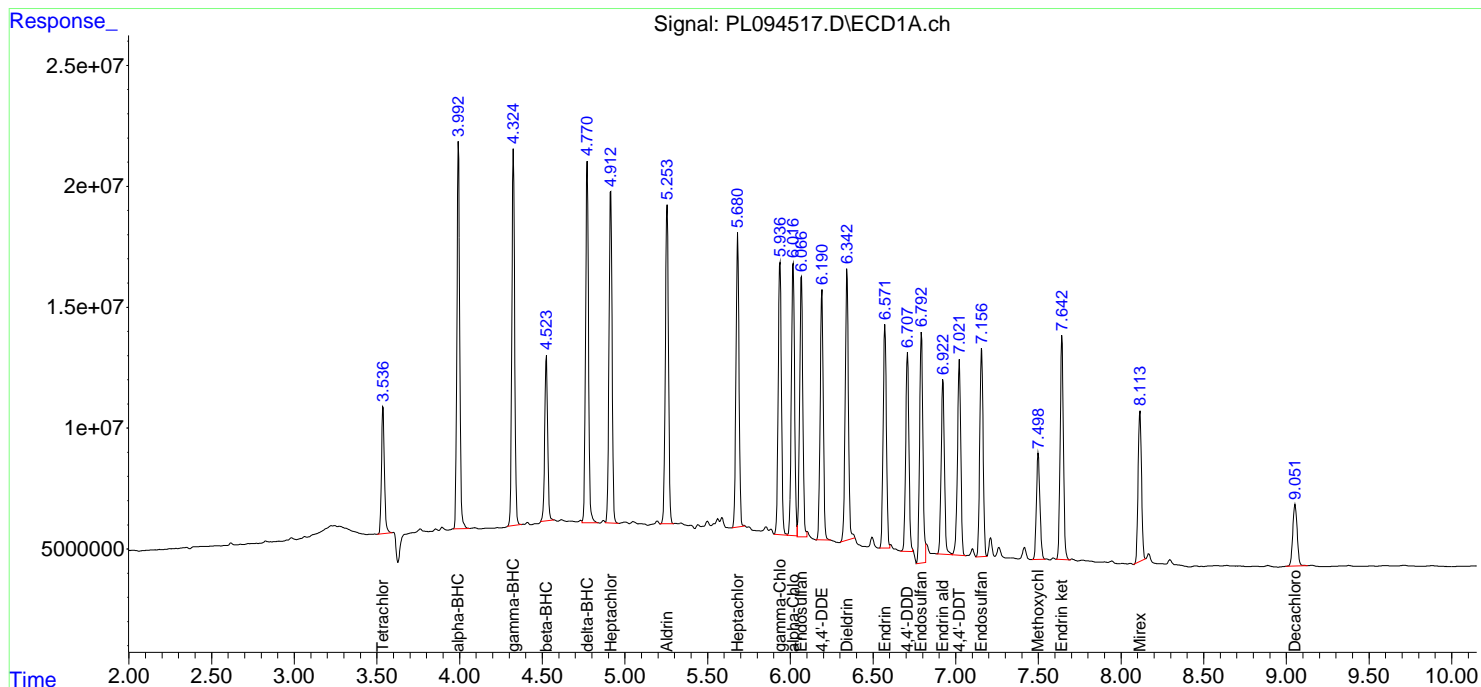
(f)=RT Delta > 1/2 Window (#)=Amounts differ by > 25% (m)=manual int.

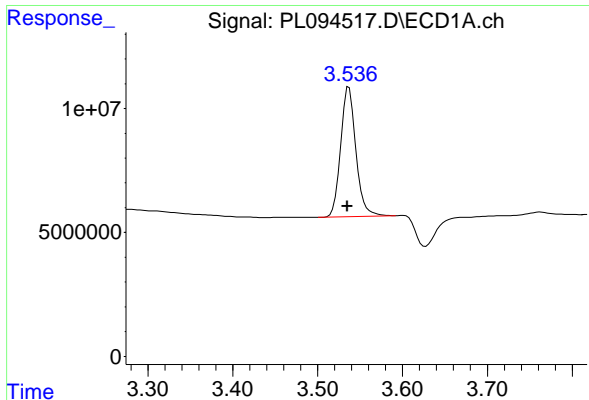
Data Path : Z:\pestpcbsrv\HPCHEM1\ECD\_L\Data\PL030525\  
 Data File : PL094517.D  
 Signal(s) : Signal #1: ECD1A.ch Signal #2: ECD2B.ch  
 Acq On : 05 Mar 2025 19:08  
 Operator : AR\AJ  
 Sample : Q1485-01MSD  
 Misc :  
 ALS Vial : 20 Sample Multiplier: 1

Instrument :  
 ECD\_L  
 ClientSampleId :  
 DN-B-41MSD

Integration File signal 1: autoint1.e  
 Integration File signal 2: autoint2.e  
 Quant Time: Mar 06 00:59:42 2025  
 Quant Method : Z:\pestpcbsrv\HPCHEM1\ECD\_L\methods\PL022125.M  
 Quant Title : GC Extractables  
 QLast Update : Fri Feb 21 14:52:19 2025  
 Response via : Initial Calibration  
 Integrator: ChemStation

Volume Inj. : 1 µl  
 Signal #1 Phase : ZB-MR1 Signal #2 Phase: ZB-MR2  
 Signal #1 Info : 30M x 0.32mm x0.5 Signal #2 Info : 30M x 0.32mm x0.25µm

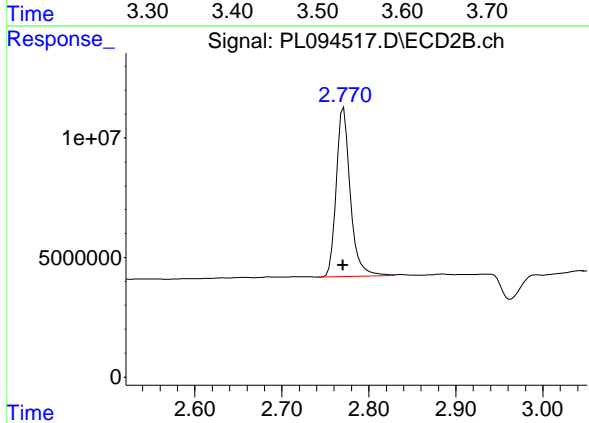




#1 Tetrachloro-m-xylene

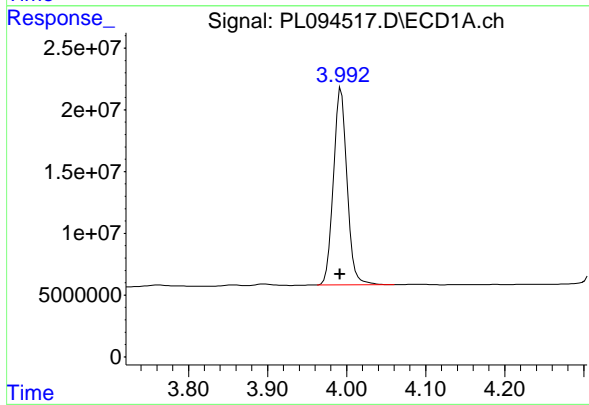
R.T.: 3.537 min  
 Delta R.T.: 0.002 min  
 Response: 65413515  
 Conc: 25.76 ng/ml

Instrument :  
 ECD\_L  
 ClientSampleId :  
 DN-B-41MSD



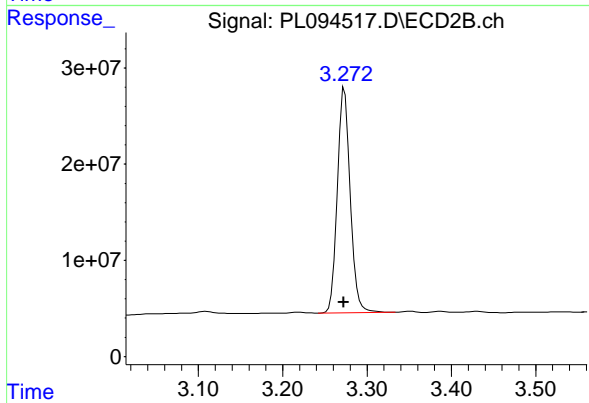
#1 Tetrachloro-m-xylene

R.T.: 2.771 min  
 Delta R.T.: 0.000 min  
 Response: 79431117  
 Conc: 24.89 ng/ml



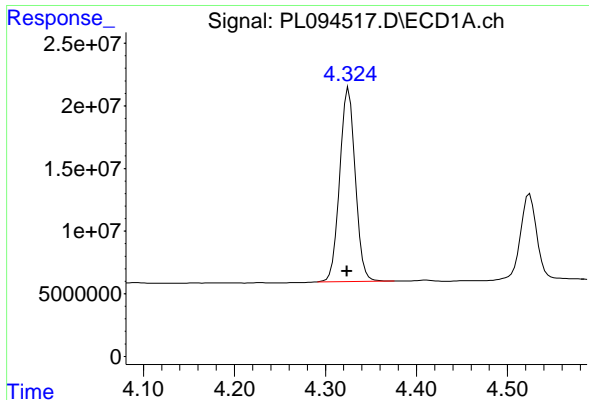
#2 alpha-BHC

R.T.: 3.993 min  
 Delta R.T.: 0.002 min  
 Response: 190805932  
 Conc: 50.44 ng/ml



#2 alpha-BHC

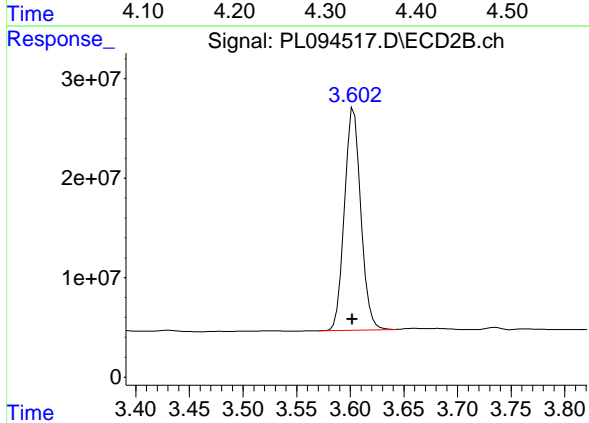
R.T.: 3.273 min  
 Delta R.T.: 0.001 min  
 Response: 248312005  
 Conc: 50.52 ng/ml



#3 gamma-BHC (Lindane)

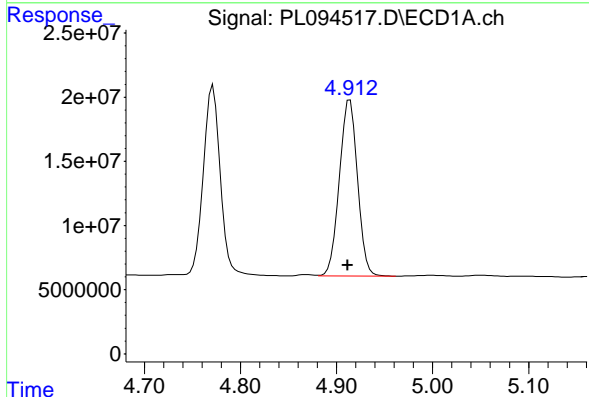
R.T.: 4.325 min  
 Delta R.T.: 0.002 min  
 Response: 183931925  
 Conc: 49.78 ng/ml

Instrument :  
 ECD\_L  
 ClientSampleId :  
 DN-B-41MSD



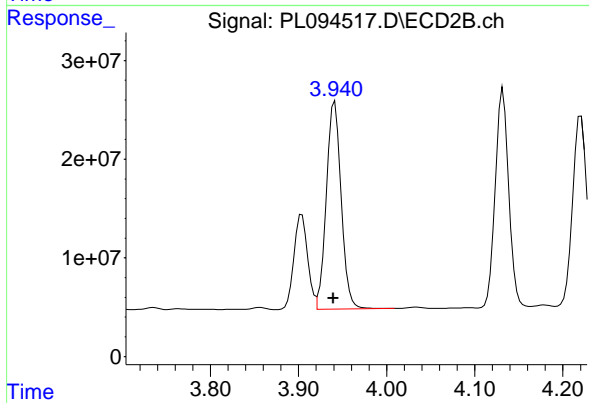
#3 gamma-BHC (Lindane)

R.T.: 3.603 min  
 Delta R.T.: 0.001 min  
 Response: 237264677  
 Conc: 50.38 ng/ml



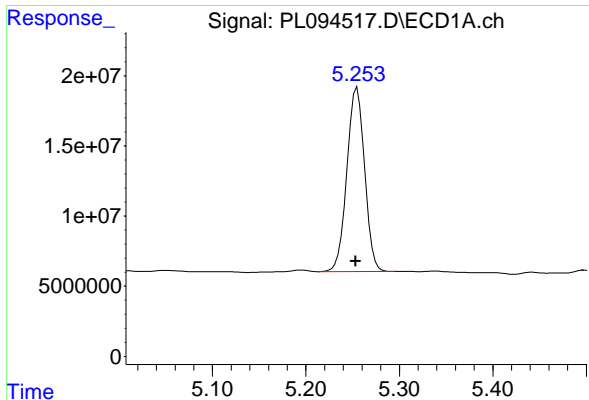
#4 Heptachlor

R.T.: 4.914 min  
 Delta R.T.: 0.002 min  
 Response: 177954303  
 Conc: 52.49 ng/ml



#4 Heptachlor

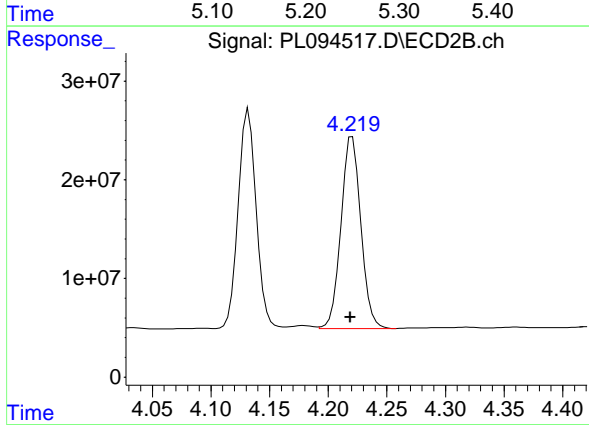
R.T.: 3.941 min  
 Delta R.T.: 0.001 min  
 Response: 246127678  
 Conc: 52.14 ng/ml



#5 Aldrin

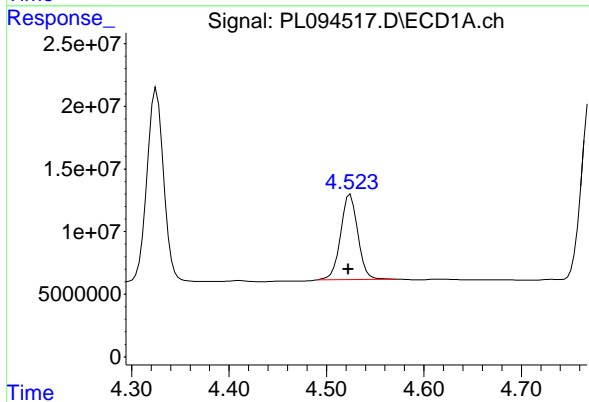
R.T.: 5.255 min  
 Delta R.T.: 0.002 min  
 Response: 173188767  
 Conc: 50.47 ng/ml

Instrument :  
 ECD\_L  
 ClientSampleId :  
 DN-B-41MSD



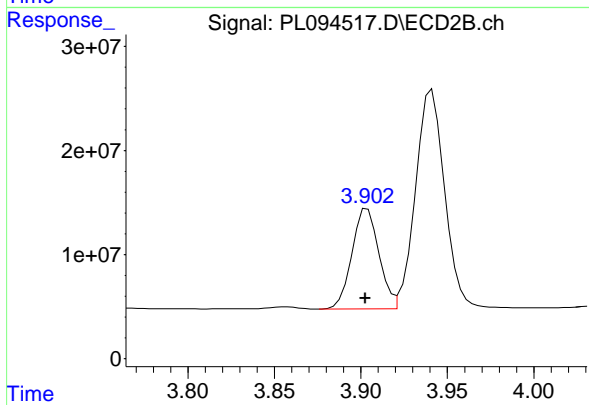
#5 Aldrin

R.T.: 4.221 min  
 Delta R.T.: 0.002 min  
 Response: 228826176  
 Conc: 49.53 ng/ml



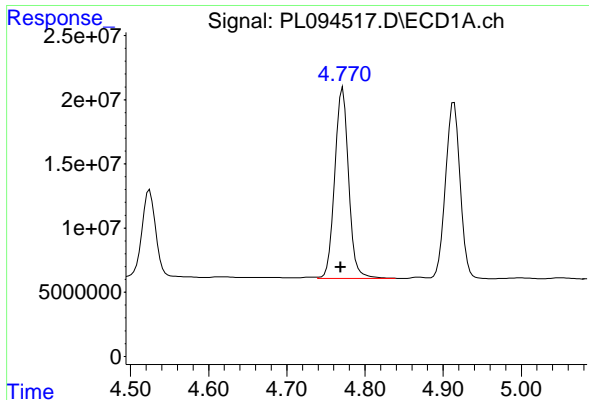
#6 beta-BHC

R.T.: 4.525 min  
 Delta R.T.: 0.002 min  
 Response: 83468369  
 Conc: 52.27 ng/ml



#6 beta-BHC

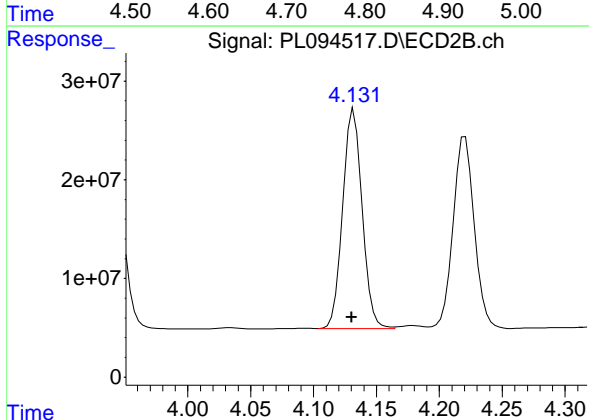
R.T.: 3.904 min  
 Delta R.T.: 0.001 min  
 Response: 104343486  
 Conc: 52.46 ng/ml



#7 delta-BHC

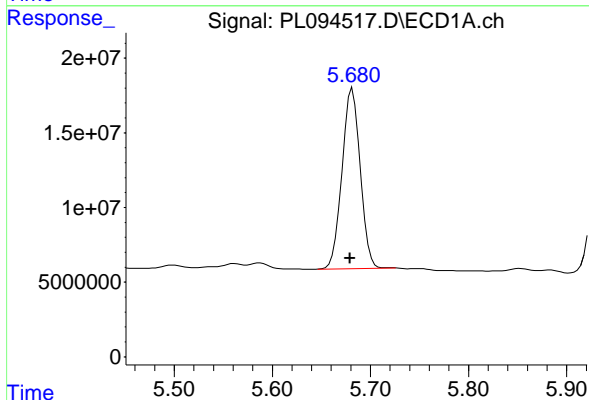
R.T.: 4.770 min  
 Delta R.T.: 0.001 min  
 Response: 182686565  
 Conc: 51.63 ng/ml

Instrument :  
 ECD\_L  
 ClientSampleId :  
 DN-B-41MSD



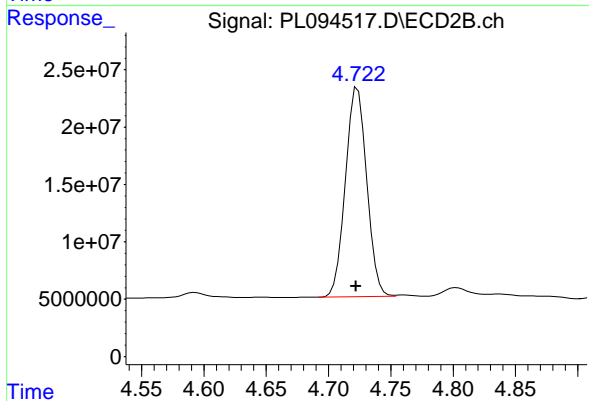
#7 delta-BHC

R.T.: 4.132 min  
 Delta R.T.: 0.002 min  
 Response: 238029250  
 Conc: 50.26 ng/ml



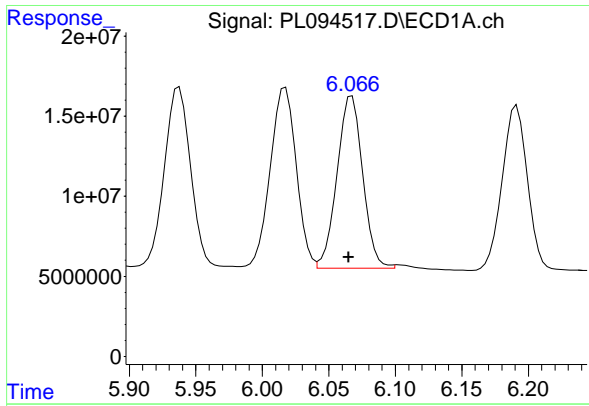
#8 Heptachlor epoxide

R.T.: 5.682 min  
 Delta R.T.: 0.003 min  
 Response: 155713803  
 Conc: 51.67 ng/ml



#8 Heptachlor epoxide

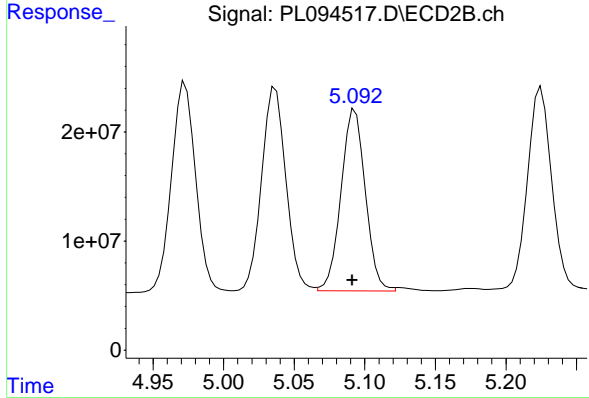
R.T.: 4.723 min  
 Delta R.T.: 0.001 min  
 Response: 217006240  
 Conc: 51.00 ng/ml



#9 Endosulfan I

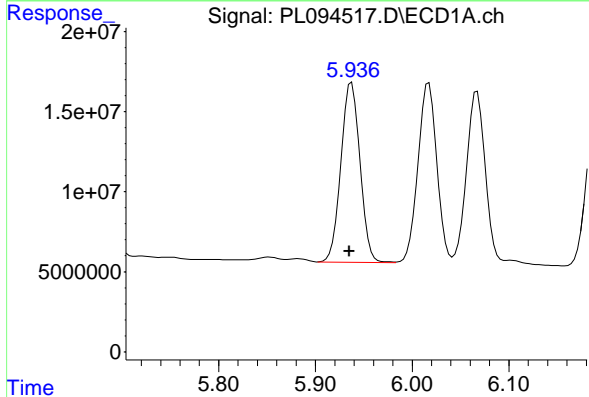
R.T.: 6.066 min  
 Delta R.T.: 0.000 min  
 Response: 143970178  
 Conc: 52.38 ng/ml

Instrument : ECD\_L  
 ClientSampleId : DN-B-41MSD



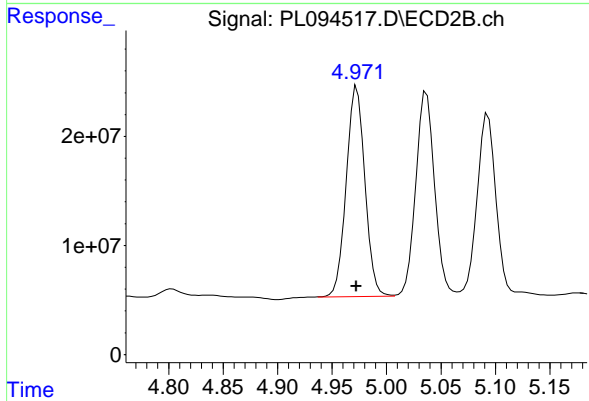
#9 Endosulfan I

R.T.: 5.092 min  
 Delta R.T.: 0.000 min  
 Response: 199805584  
 Conc: 50.12 ng/ml m



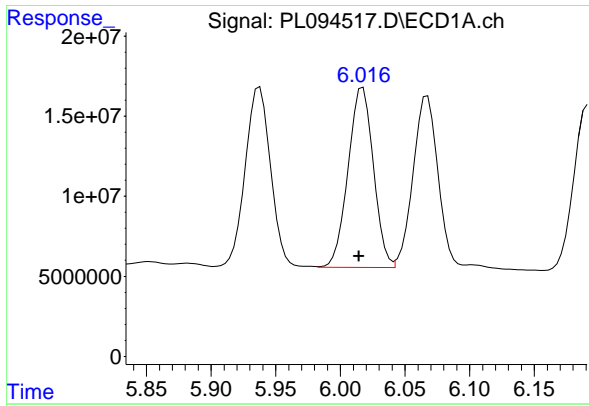
#10 gamma-Chlordane

R.T.: 5.938 min  
 Delta R.T.: 0.002 min  
 Response: 153402357  
 Conc: 52.25 ng/ml



#10 gamma-Chlordane

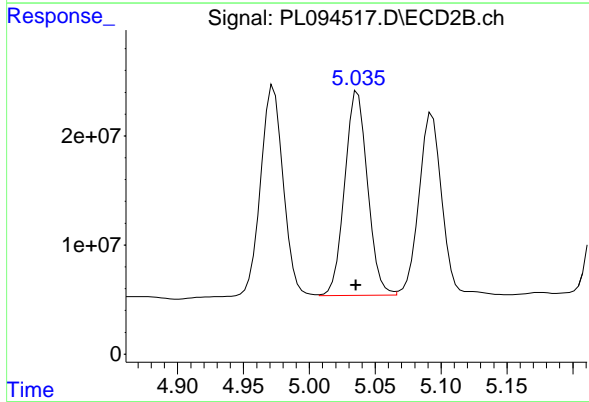
R.T.: 4.973 min  
 Delta R.T.: 0.000 min  
 Response: 229507545  
 Conc: 52.90 ng/ml



#11 alpha-Chlordane

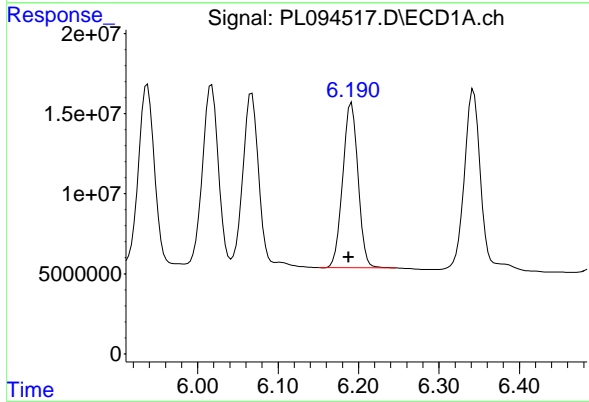
R.T.: 6.017 min  
 Delta R.T.: 0.003 min  
 Response: 152824538  
 Conc: 52.75 ng/ml

Instrument :  
 ECD\_L  
 ClientSampleId :  
 DN-B-41MSD



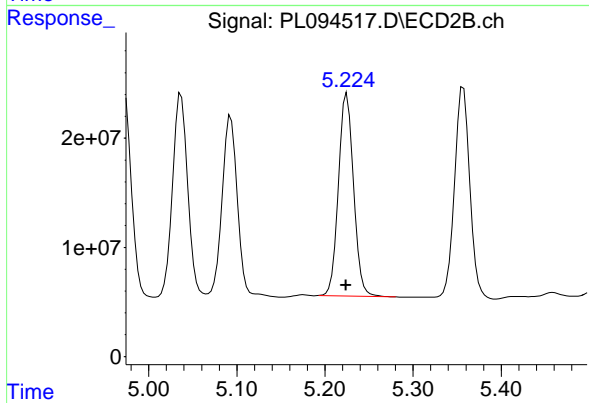
#11 alpha-Chlordane

R.T.: 5.037 min  
 Delta R.T.: 0.002 min  
 Response: 225600222  
 Conc: 52.25 ng/ml



#12 4,4'-DDE

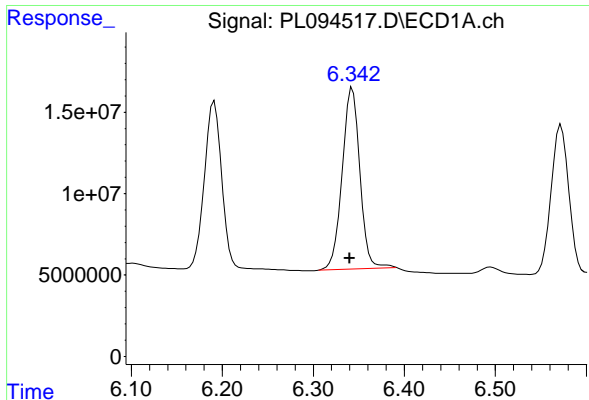
R.T.: 6.191 min  
 Delta R.T.: 0.003 min  
 Response: 136056575  
 Conc: 52.09 ng/ml



#12 4,4'-DDE

R.T.: 5.225 min  
 Delta R.T.: 0.001 min  
 Response: 221958096  
 Conc: 52.85 ng/ml

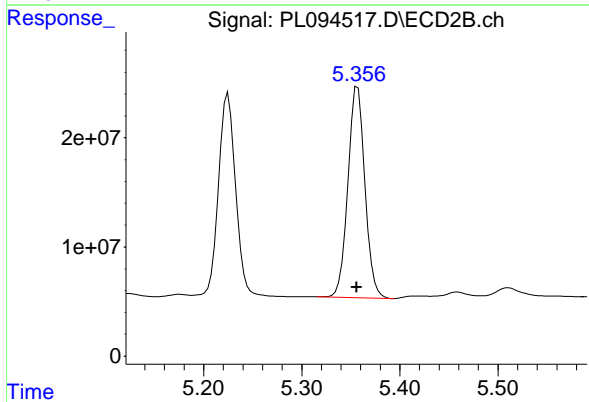




#13 Dieldrin

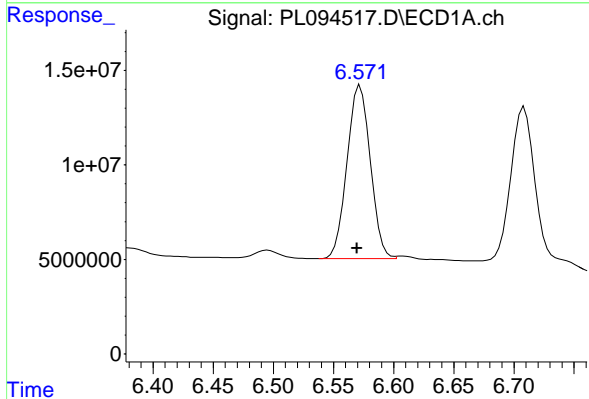
R.T.: 6.343 min  
 Delta R.T.: 0.003 min  
 Response: 151068168  
 Conc: 53.02 ng/ml

Instrument :  
 ECD\_L  
 ClientSampleId :  
 DN-B-41MSD



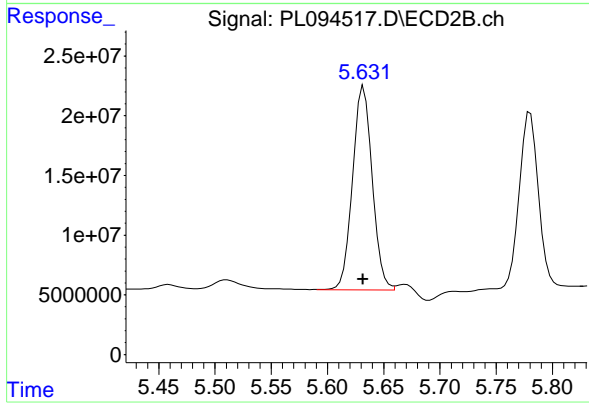
#13 Dieldrin

R.T.: 5.357 min  
 Delta R.T.: 0.001 min  
 Response: 232742801  
 Conc: 53.12 ng/ml



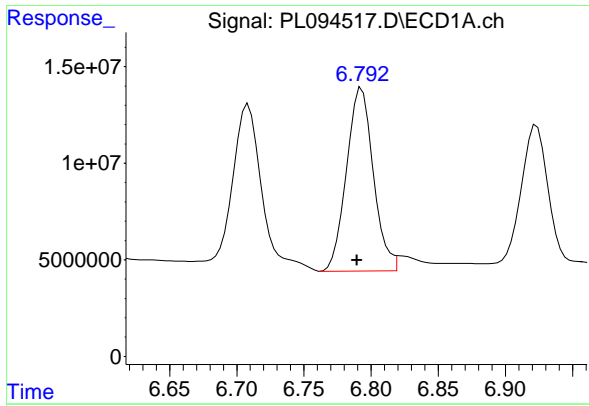
#14 Endrin

R.T.: 6.571 min  
 Delta R.T.: 0.001 min  
 Response: 124352201  
 Conc: 48.72 ng/ml m



#14 Endrin

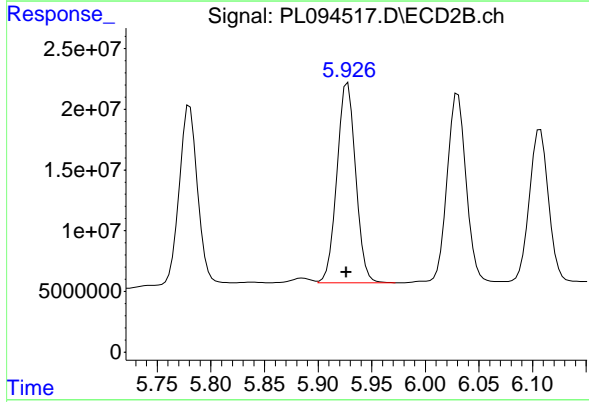
R.T.: 5.631 min  
 Delta R.T.: 0.000 min  
 Response: 207583291  
 Conc: 60.97 ng/ml m



#15 Endosulfan II

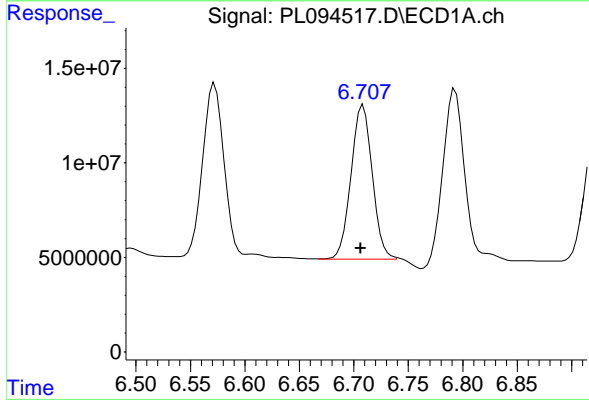
R.T.: 6.792 min  
 Delta R.T.: 0.002 min  
 Response: 133473908  
 Conc: 53.02 ng/ml

Instrument :  
 ECD\_L  
 ClientSampleId :  
 DN-B-41MSD



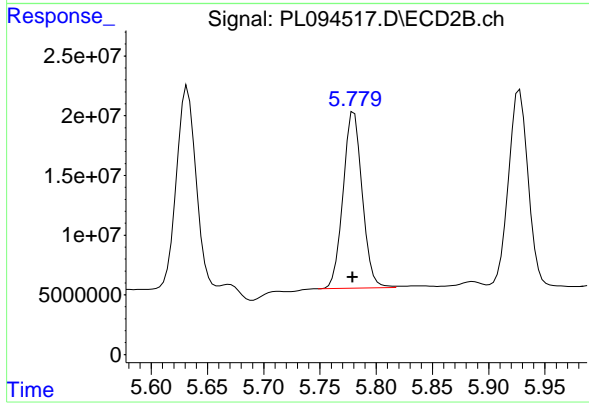
#15 Endosulfan II

R.T.: 5.928 min  
 Delta R.T.: 0.001 min  
 Response: 199960699  
 Conc: 53.47 ng/ml



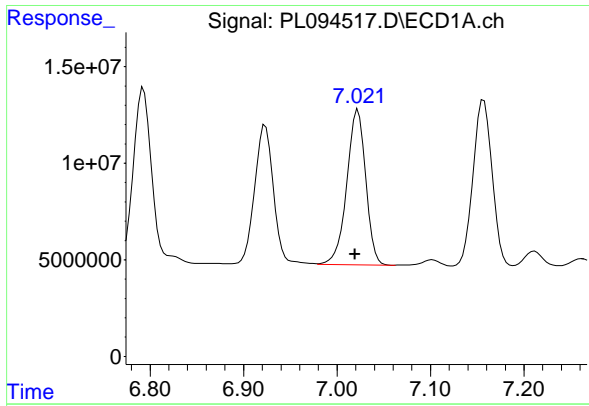
#16 4,4'-DDD

R.T.: 6.707 min  
 Delta R.T.: 0.001 min  
 Response: 110945271  
 Conc: 59.98 ng/ml m



#16 4,4'-DDD

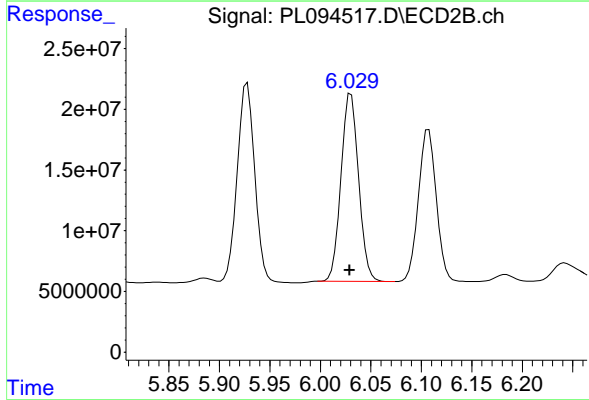
R.T.: 5.779 min  
 Delta R.T.: 0.000 min  
 Response: 175296605  
 Conc: 55.03 ng/ml m



#17 4,4'-DDT

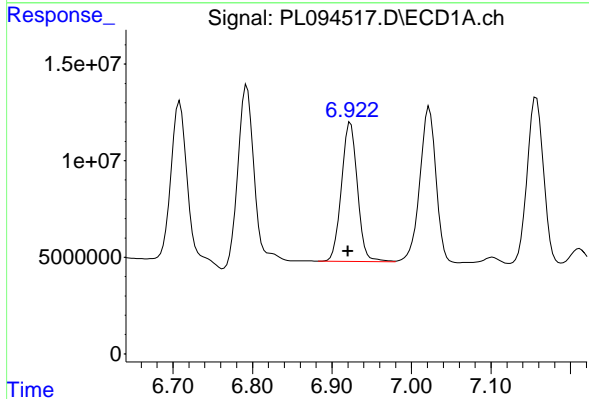
R.T.: 7.022 min  
 Delta R.T.: 0.003 min  
 Response: 113493907  
 Conc: 54.04 ng/ml

Instrument :  
 ECD\_L  
 ClientSampleId :  
 DN-B-41MSD



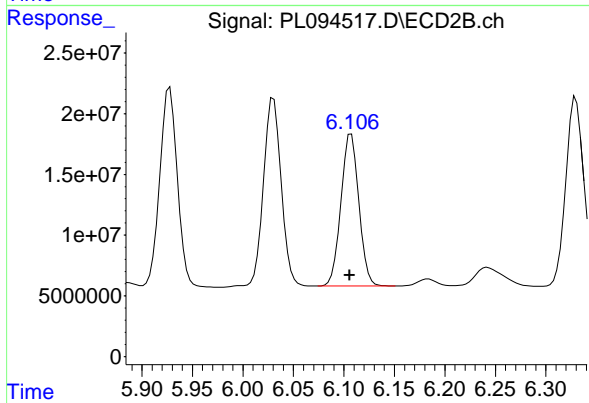
#17 4,4'-DDT

R.T.: 6.030 min  
 Delta R.T.: 0.001 min  
 Response: 187776132  
 Conc: 52.79 ng/ml



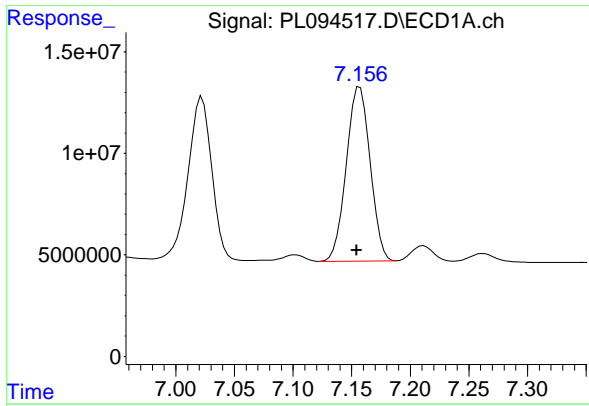
#18 Endrin aldehyde

R.T.: 6.923 min  
 Delta R.T.: 0.003 min  
 Response: 100296097  
 Conc: 51.52 ng/ml



#18 Endrin aldehyde

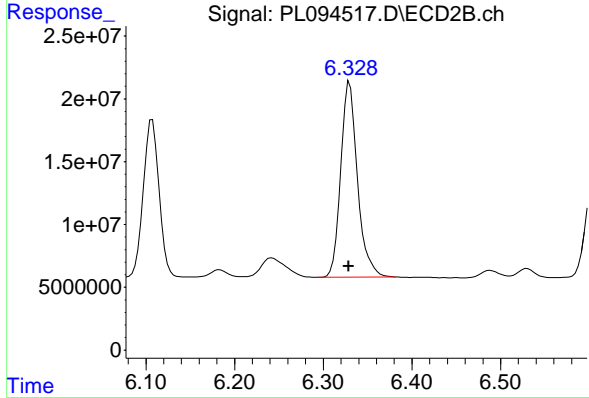
R.T.: 6.107 min  
 Delta R.T.: 0.002 min  
 Response: 154413997  
 Conc: 48.86 ng/ml



#19 Endosulfan Sulfate

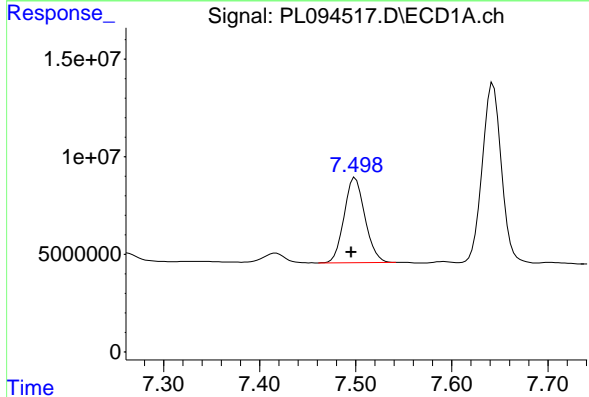
R.T.: 7.156 min  
 Delta R.T.: 0.001 min  
 Response: 121765499  
 Conc: 53.79 ng/ml

Instrument :  
 ECD\_L  
 ClientSampleId :  
 DN-B-41MSD



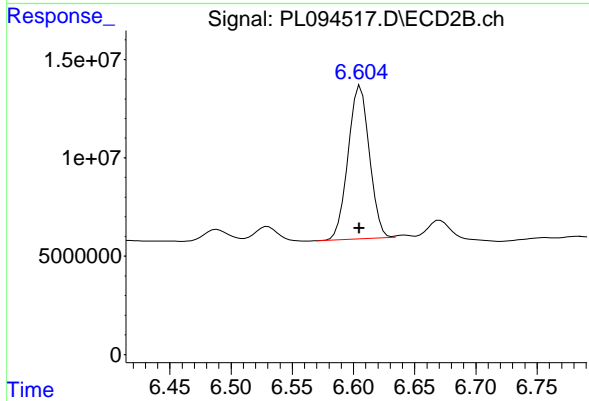
#19 Endosulfan Sulfate

R.T.: 6.330 min  
 Delta R.T.: 0.001 min  
 Response: 203718632  
 Conc: 55.15 ng/ml



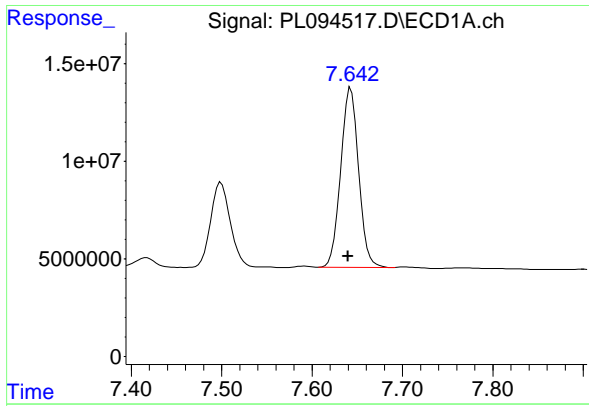
#20 Methoxychlor

R.T.: 7.499 min  
 Delta R.T.: 0.004 min  
 Response: 65280904  
 Conc: 58.76 ng/ml



#20 Methoxychlor

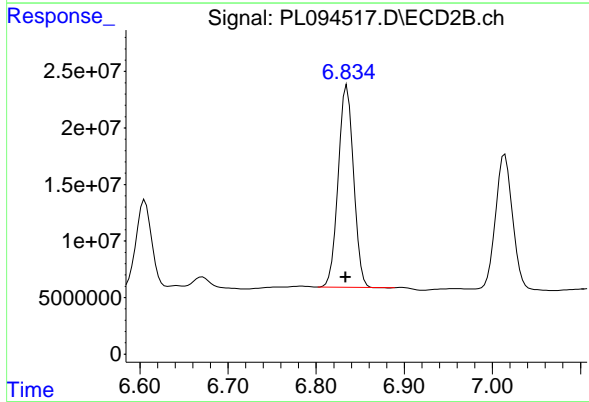
R.T.: 6.606 min  
 Delta R.T.: 0.000 min  
 Response: 94201449  
 Conc: 48.28 ng/ml



#21 Endrin ketone

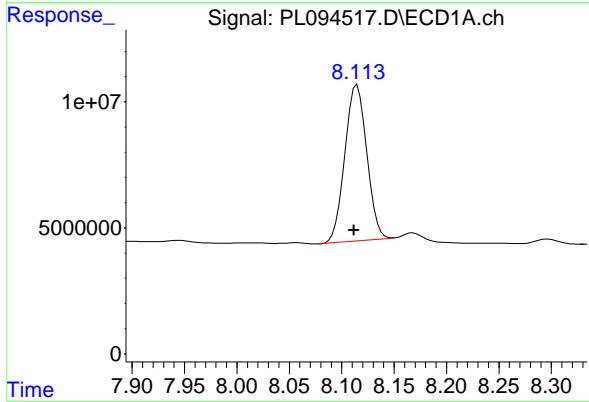
R.T.: 7.643 min  
 Delta R.T.: 0.003 min  
 Response: 126718064  
 Conc: 50.55 ng/ml

Instrument :  
 ECD\_L  
 ClientSampleId :  
 DN-B-41MSD



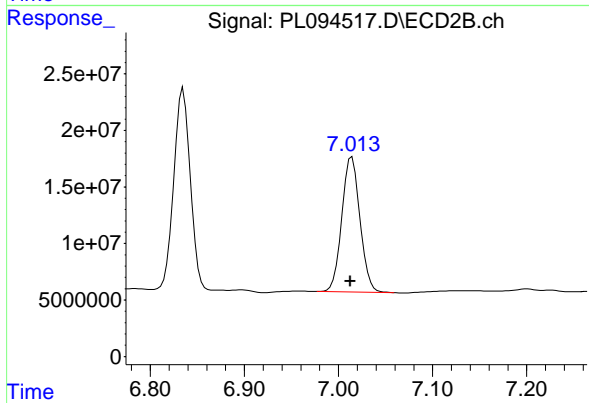
#21 Endrin ketone

R.T.: 6.835 min  
 Delta R.T.: 0.002 min  
 Response: 216134520  
 Conc: 50.65 ng/ml



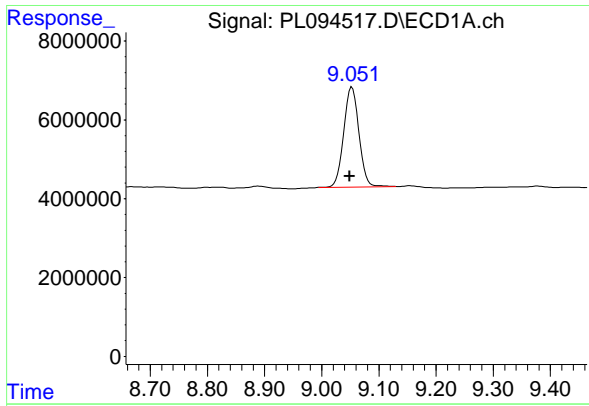
#22 Mirex

R.T.: 8.115 min  
 Delta R.T.: 0.003 min  
 Response: 90442707  
 Conc: 43.83 ng/ml



#22 Mirex

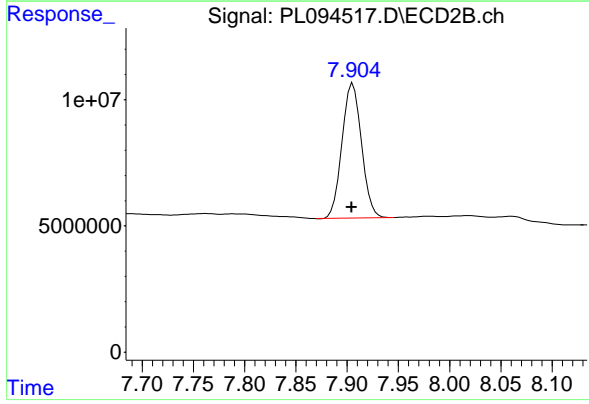
R.T.: 7.014 min  
 Delta R.T.: 0.002 min  
 Response: 160033504  
 Conc: 45.89 ng/ml



#28 Decachlorobiphenyl

R.T.: 9.053 min  
 Delta R.T.: 0.004 min  
 Response: 47152251  
 Conc: 22.17 ng/ml

Instrument :  
 ECD\_L  
 ClientSampleId :  
 DN-B-41MSD



#28 Decachlorobiphenyl

R.T.: 7.906 min  
 Delta R.T.: 0.001 min  
 Response: 70555513  
 Conc: 18.35 ng/ml