

Data Path : Z:\pestpcbsrv\HPCHEM1\ECD_L\Data\PL030619\
 Data File : PL045535.D
 Signal(s) : Signal #1: ECD1A.ch Signal #2: ECD2B.ch
 Acq On : 06 Mar 2019 14:07
 Operator : AJ\SJ
 Sample : K1704-07RE
 Misc :
 ALS Vial : 12 Sample Multiplier: 1

Instrument :
 ECD_L
 ClientSampleId :
 PST-028-SW063-022719RE

Integration File signal 1: autoint1.e
 Integration File signal 2: autoint2.e
 Quant Time: Mar 06 23:52:10 2019
 Quant Method : Z:\pestpcbsrv\HPCHEM1\ECD_L\methods\PL022719.M
 Quant Title : GC Extractables
 QLast Update : Wed Feb 27 17:00:03 2019
 Response via : Initial Calibration
 Integrator: ChemStation

Volume Inj. : 1 µl
 Signal #1 Phase : ZB-MR2 Signal #2 Phase: ZB-MR1
 Signal #1 Info : 30M x 0.32mm x0.2 Signal #2 Info : 30M x 0.32mm x0.5µm

Compound	RT#1	RT#2	Resp#1	Resp#2	ng/ml	ng/ml

System Monitoring Compounds						
1) SA Tetrachlo...	3.363	3.981	166.2E6	51253694	24.164	23.933
28) SA Decachlor...	8.046	9.039	224.2E6	65114872	26.798	28.498

Target Compounds

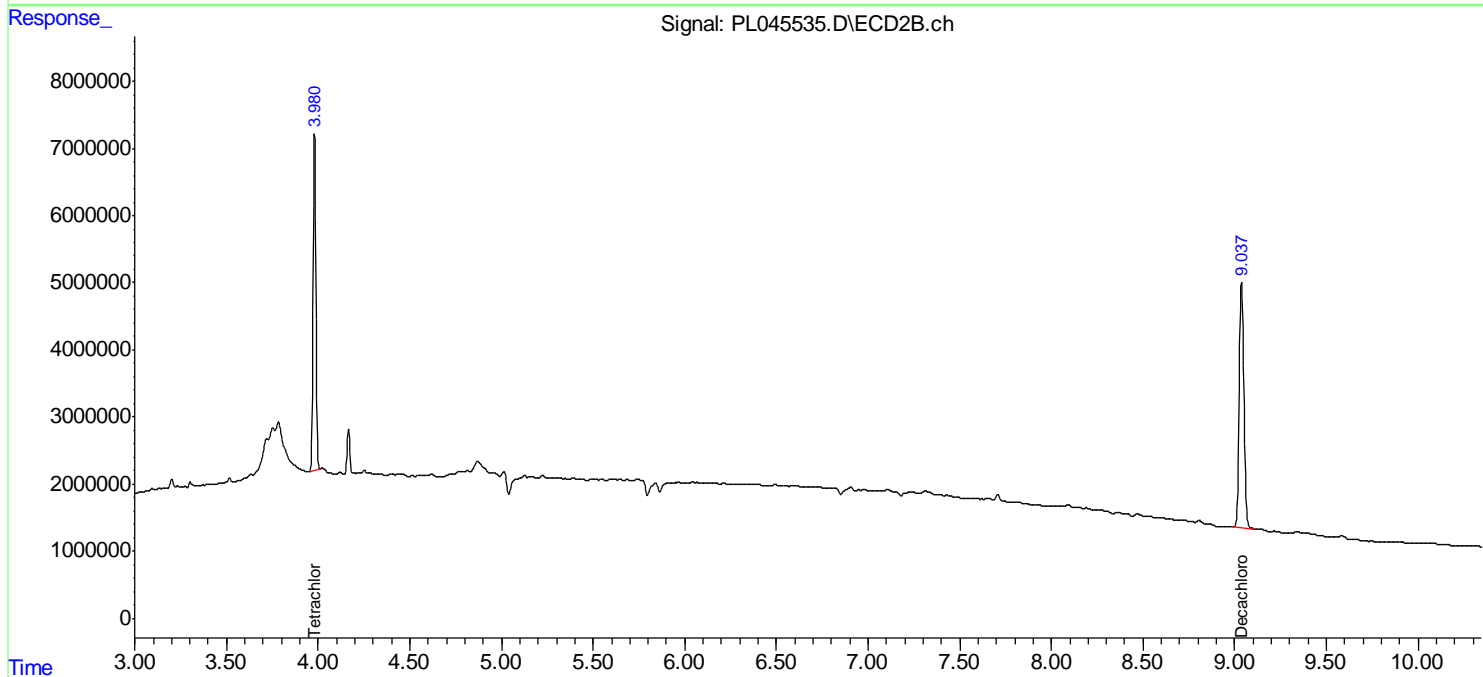
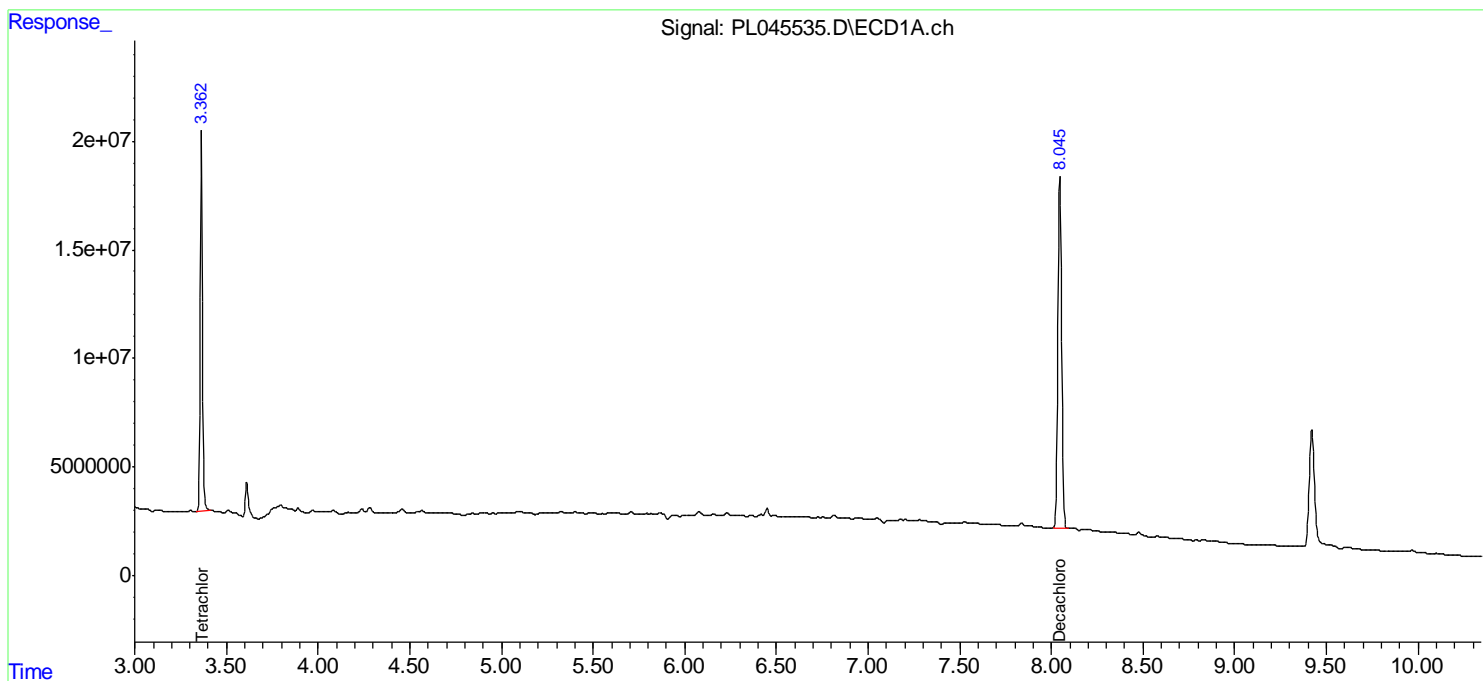
(f)=RT Delta > 1/2 Window (#)=Amounts differ by > 25% (m)=manual int.

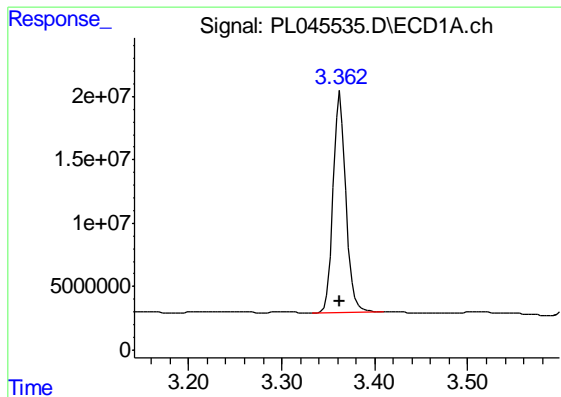
Data Path : Z:\pestpcbsrv\HPCHEM1\ECD_L\Data\PL030619\
 Data File : PL045535.D
 Signal(s) : Signal #1: ECD1A.ch Signal #2: ECD2B.ch
 Acq On : 06 Mar 2019 14:07
 Operator : AJ\SJ
 Sample : K1704-07RE
 Misc :
 ALS Vial : 12 Sample Multiplier: 1

Instrument :
 ECD_L
ClientSampleId :
 PST-028-SW063-022719RE

Integration File signal 1: autoint1.e
 Integration File signal 2: autoint2.e
 Quant Time: Mar 06 23:52:10 2019
 Quant Method : Z:\pestpcbsrv\HPCHEM1\ECD_L\methods\PL022719.M
 Quant Title : GC Extractables
 QLast Update : Wed Feb 27 17:00:03 2019
 Response via : Initial Calibration
 Integrator: ChemStation

Volume Inj. : 1 µl
 Signal #1 Phase : ZB-MR2 Signal #2 Phase: ZB-MR1
 Signal #1 Info : 30M x 0.32mm x0.2 Signal #2 Info : 30M x 0.32mm x0.5µm

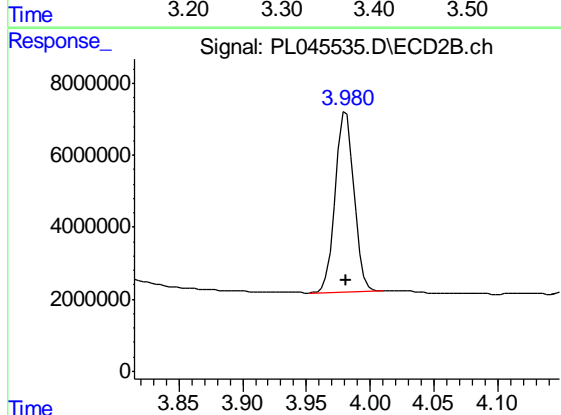




#1 Tetrachloro-m-xylene

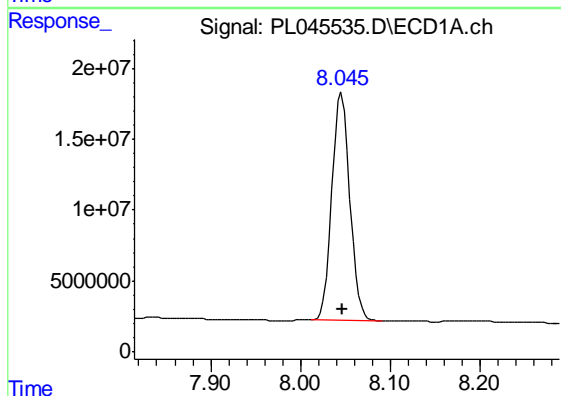
R.T.: 3.363 min
Delta R.T.: 0.000 min
Response: 166230788
Conc: 24.16 ng/ml

Instrument :
ECD_L
ClientSampleId :
PST-028-SW063-022719RE



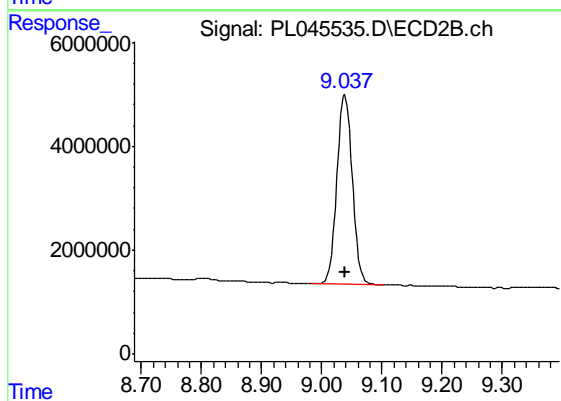
#1 Tetrachloro-m-xylene

R.T.: 3.981 min
Delta R.T.: 0.000 min
Response: 51253694
Conc: 23.93 ng/ml



#28 Decachlorobiphenyl

R.T.: 8.046 min
Delta R.T.: -0.001 min
Response: 224227958
Conc: 26.80 ng/ml



#28 Decachlorobiphenyl

R.T.: 9.039 min
Delta R.T.: 0.000 min
Response: 65114872
Conc: 28.50 ng/ml