

Data Path : Z:\pestpcbsrv\HPCHEM1\ECD\_L\Data\PL030620\  
 Data File : PL057105.D  
 Signal(s) : Signal #1: ECD1A.ch Signal #2: ECD2B.ch  
 Acq On : 06 Mar 2020 10:00  
 Operator : AJ\MA  
 Sample : I.BLK  
 Misc :  
 ALS Vial : 2 Sample Multiplier: 1

Instrument :  
 ECD\_L  
 ClientSampleId :

Integration File signal 1: autoint1.e  
 Integration File signal 2: autoint2.e  
 Quant Time: Mar 07 02:54:58 2020  
 Quant Method : Z:\pestpcbsrv\HPCHEM1\ECD\_L\methods\PL030320.M  
 Quant Title : GC Extractables  
 QLast Update : Wed Mar 04 03:55:01 2020  
 Response via : Initial Calibration  
 Integrator: ChemStation

Volume Inj. : 1 µl  
 Signal #1 Phase : ZB-MR2 Signal #2 Phase: ZB-MR1  
 Signal #1 Info : 30M x 0.32mm x0.2 Signal #2 Info : 30M x 0.32mm x0.5µm

Compound	RT#1	RT#2	Resp#1	Resp#2	ng/ml	ng/ml
-----						
System Monitoring Compounds						
1) SA Tetrachlo...	3.461	3.981f	203.9E6	51759801	23.921	24.260
28) SA Decachlor...	8.213	9.008f	206.7E6	44502340	21.383	20.945

Target Compounds

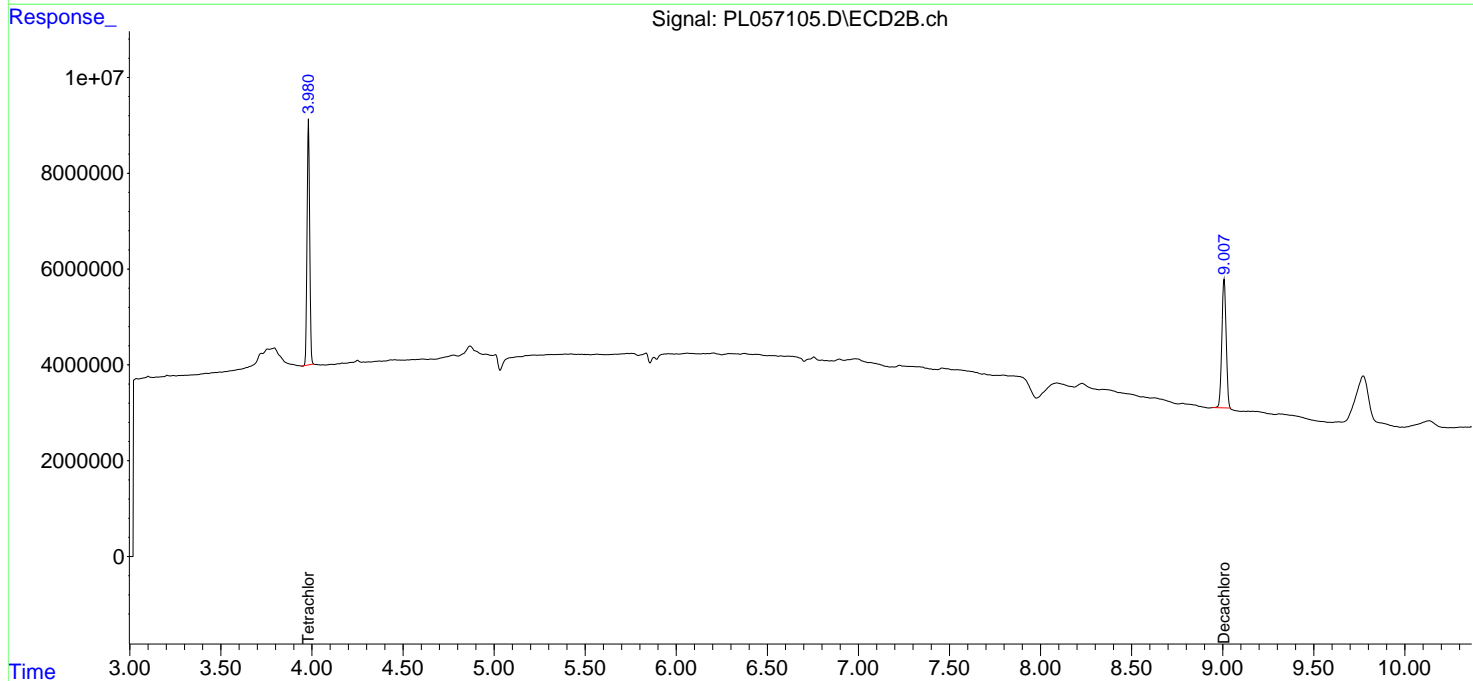
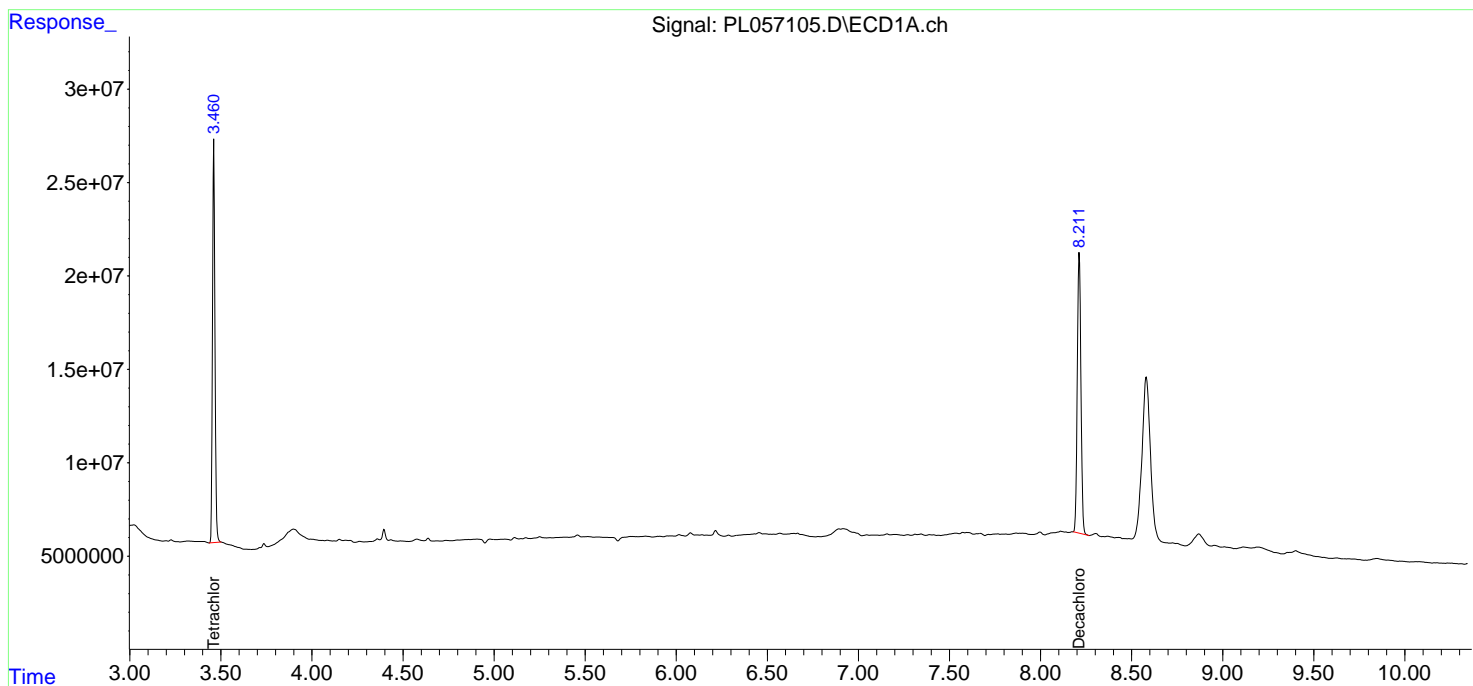
(f)=RT Delta > 1/2 Window (#)=Amounts differ by > 25% (m)=manual int.

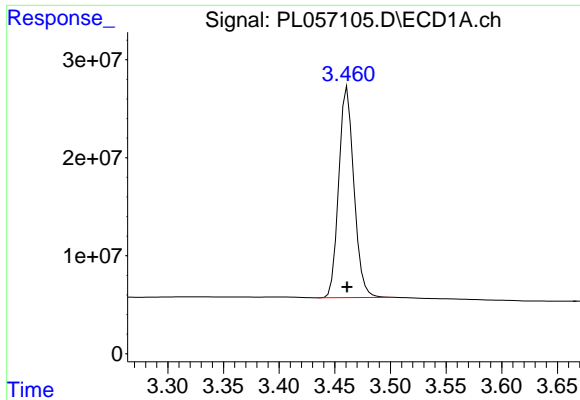
Data Path : Z:\pestpcbsrv\HPCHEM1\ECD\_L\Data\PL030620\  
 Data File : PL057105.D  
 Signal(s) : Signal #1: ECD1A.ch Signal #2: ECD2B.ch  
 Acq On : 06 Mar 2020 10:00  
 Operator : AJ\MA  
 Sample : I.BLK  
 Misc :  
 ALS Vial : 2 Sample Multiplier: 1

Instrument :  
 ECD\_L  
 ClientSampled :

Integration File signal 1: autoint1.e  
 Integration File signal 2: autoint2.e  
 Quant Time: Mar 07 02:54:58 2020  
 Quant Method : Z:\pestpcbsrv\HPCHEM1\ECD\_L\methods\PL030320.M  
 Quant Title : GC Extractables  
 QLast Update : Wed Mar 04 03:55:01 2020  
 Response via : Initial Calibration  
 Integrator: ChemStation

Volume Inj. : 1 µl  
 Signal #1 Phase : ZB-MR2 Signal #2 Phase: ZB-MR1  
 Signal #1 Info : 30M x 0.32mm x0.2 Signal #2 Info : 30M x 0.32mm x0.5µm





#1 Tetrachloro-m-xylene

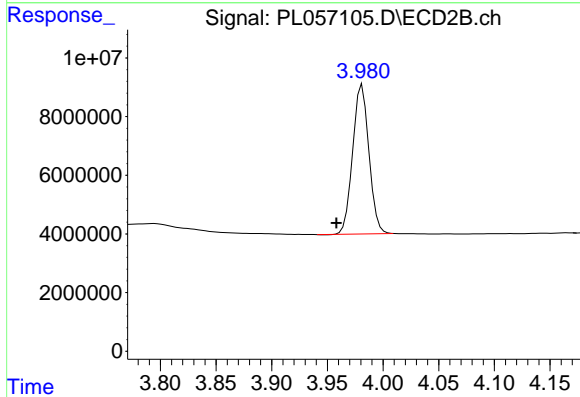
R.T.: 3.461 min

Delta R.T.: 0.000 min

Response: 203857742

Conc: 23.92 ng/ml

Instrument :  
ECD\_L  
ClientSampleId :



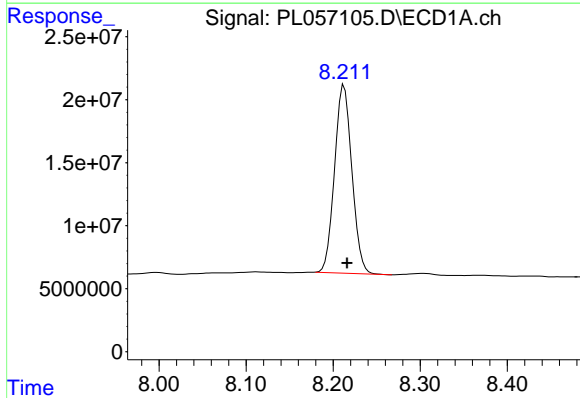
#1 Tetrachloro-m-xylene

R.T.: 3.981 min

Delta R.T.: 0.023 min

Response: 51759801

Conc: 24.26 ng/ml



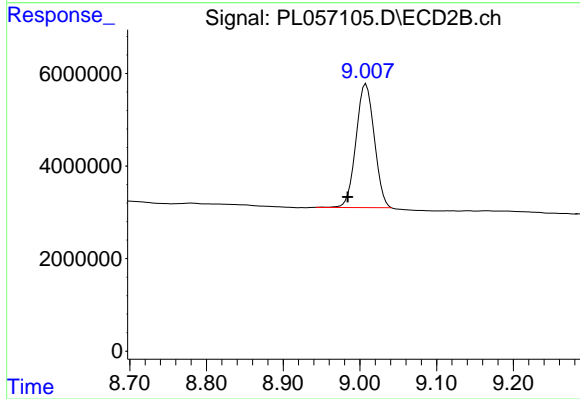
#28 Decachlorobiphenyl

R.T.: 8.213 min

Delta R.T.: -0.003 min

Response: 206670605

Conc: 21.38 ng/ml



#28 Decachlorobiphenyl

R.T.: 9.008 min

Delta R.T.: 0.024 min

Response: 44502340

Conc: 20.94 ng/ml