

Data Path : Z:\pestpcbsrv\HPCHEM1\ECD_L\Data\PL030620\
 Data File : PL057121.D
 Signal(s) : Signal #1: ECD1A.ch Signal #2: ECD2B.ch
 Acq On : 06 Mar 2020 14:42
 Operator : AJ\MA
 Sample : L1753-01
 Misc :
 ALS Vial : 18 Sample Multiplier: 1

Instrument :
 ECD_L
 ClientSampleId :
 CL-01-030520

Integration File signal 1: autoint1.e
 Integration File signal 2: autoint2.e
 Quant Time: Mar 07 02:58:22 2020
 Quant Method : Z:\pestpcbsrv\HPCHEM1\ECD_L\methods\PL030320.M
 Quant Title : GC Extractables
 QLast Update : Wed Mar 04 03:55:01 2020
 Response via : Initial Calibration
 Integrator: ChemStation

Volume Inj. : 1 µl
 Signal #1 Phase : ZB-MR2 Signal #2 Phase: ZB-MR1
 Signal #1 Info : 30M x 0.32mm x0.2 Signal #2 Info : 30M x 0.32mm x0.5µm

	Compound	RT#1	RT#2	Resp#1	Resp#2	ng/ml	ng/ml

System Monitoring Compounds							
1)	SA Tetrachlo...	3.461	3.959	114.2E6	33324523	13.395	15.620
28)	SA Decachlor...	8.211	8.986	158.0E6	21836434	16.347	10.277 #
Target Compounds							
4)	MA Heptachlor	4.483	5.132	10439709	31401323	0.769	10.089 #
5)	MB Aldrin	0.000	5.410f	0	19161253	N.D.	6.410 #
6)	B beta-BHC	0.000	4.822f	0	10806815	N.D.	7.668 #
9)	A Endosulfan I	0.000	6.170	0	2270817	N.D.	0.813 #
10)	B gamma-Chl...	5.422f	6.054	59707659	4185539	4.807	1.398 #
11)	B alpha-Chl...	5.458	6.127	23197942	22425411	1.888	7.439 #
12)	B 4,4'-DDE	5.622	6.282	73596093	21257926	6.281	7.491
13)	MA Dieldrin	5.749	0.000	12168463	0	0.995	N.D. #
14)	MA Endrin	6.011	0.000	5605873	0	0.515	N.D. #
15)	B Endosulfa...	6.294	0.000	13904853	0	1.288	N.D. #
16)	A 4,4'-DDD	0.000	6.776	0	5488806	N.D.	2.253 #
17)	MA 4,4'-DDT	6.378	7.070	40350315	12172151	4.124	4.948
20)	A Methoxychlor	6.908f	0.000	7913868	0	1.587	N.D. #
23)	Chlordane-1	4.331	0.000	8859688	0	29.148	N.D. #
24)	Chlordane-2	4.833	5.410	11810300	19161253	33.489	200.738 #
25)	Chlordane-3	5.422f	6.054	59707659	4185539	55.355	11.044 #
26)	Chlordane-4	5.458	6.127	23197942	22425411	25.243	48.907 #
27)	Chlordane-5	6.294	6.927	13904853	3658552	38.282	43.852

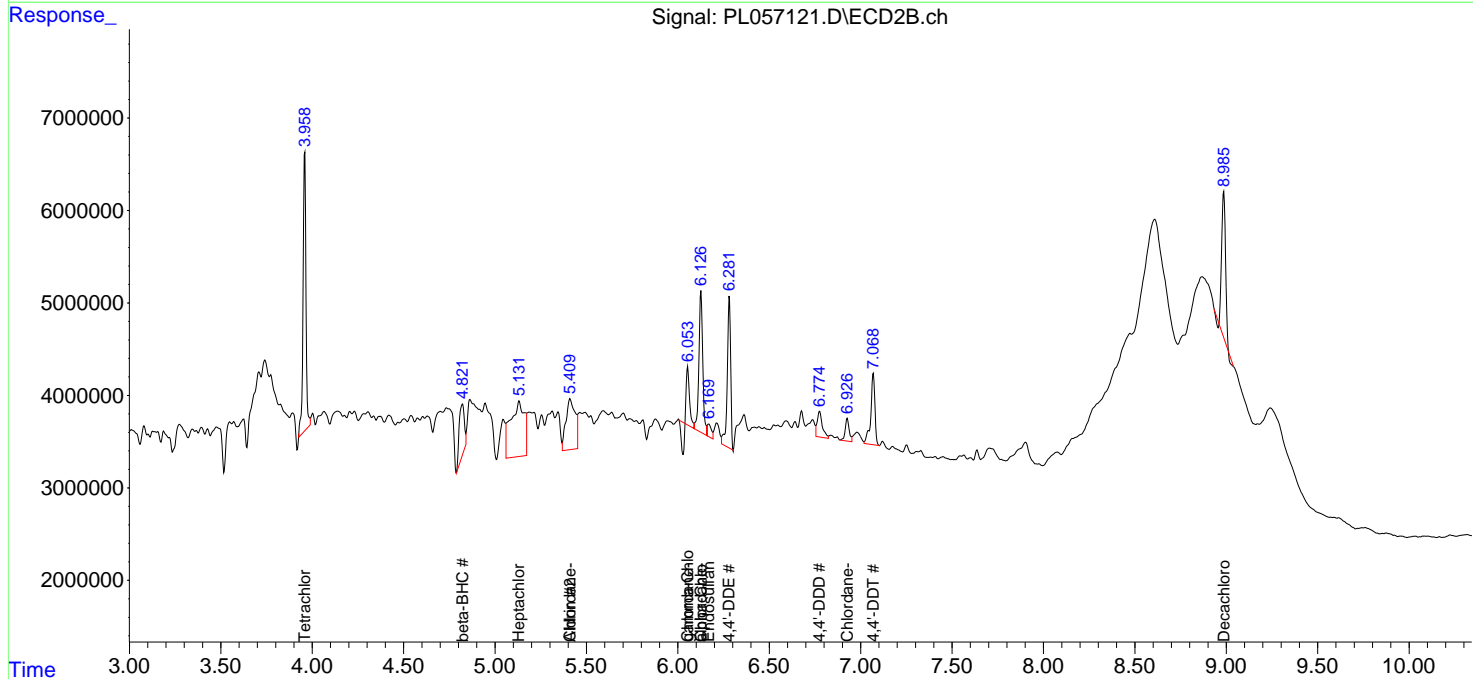
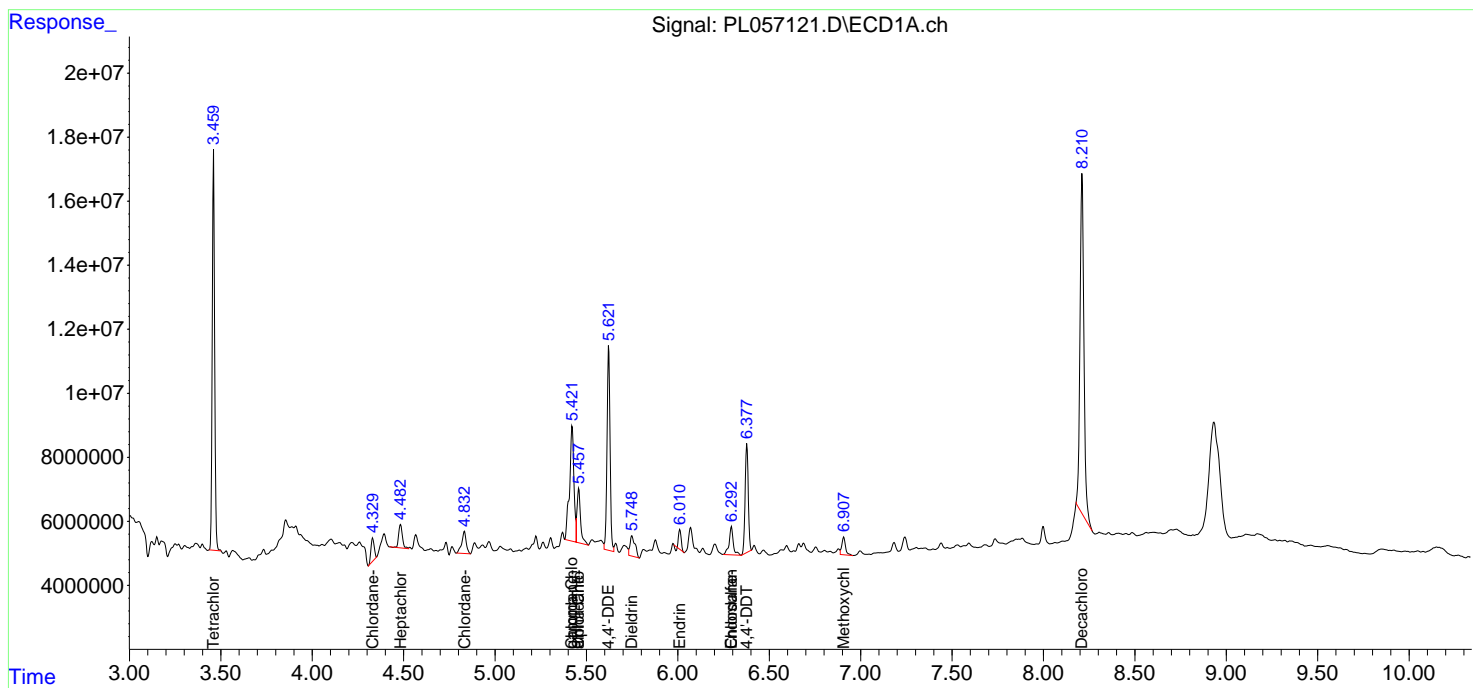
(f)=RT Delta > 1/2 Window (#)=Amounts differ by > 25% (m)=manual int.

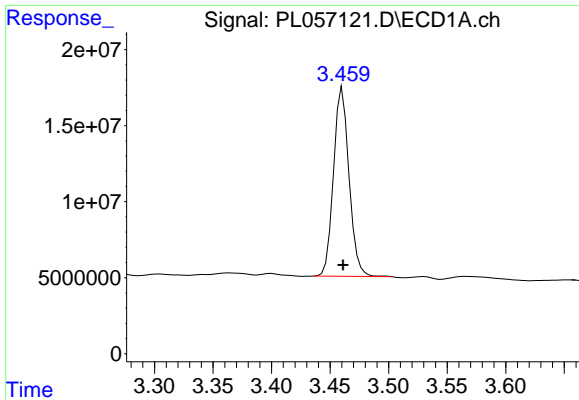
Data Path : Z:\pestpcbsrv\HPCHEM1\ECD_L\Data\PL030620\
 Data File : PL057121.D
 Signal(s) : Signal #1: ECD1A.ch Signal #2: ECD2B.ch
 Acq On : 06 Mar 2020 14:42
 Operator : AJ\MA
 Sample : L1753-01
 Misc :
 ALS Vial : 18 Sample Multiplier: 1

Instrument :
 ECD_L
 Client Sampled :
 CL-01-030520

Integration File signal 1: autoint1.e
 Integration File signal 2: autoint2.e
 Quant Time: Mar 07 02:58:22 2020
 Quant Method : Z:\pestpcbsrv\HPCHEM1\ECD_L\methods\PL030320.M
 Quant Title : GC Extractables
 QLast Update : Wed Mar 04 03:55:01 2020
 Response via : Initial Calibration
 Integrator: ChemStation

Volume Inj. : 1 µl
 Signal #1 Phase : ZB-MR2 Signal #2 Phase: ZB-MR1
 Signal #1 Info : 30M x 0.32mm x0.2 Signal #2 Info : 30M x 0.32mm x0.5µm

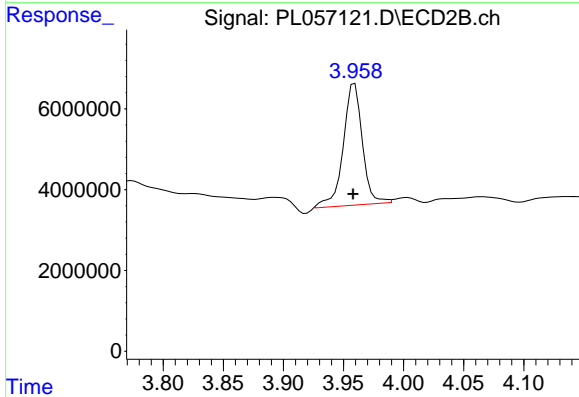




#1 Tetrachloro-m-xylene

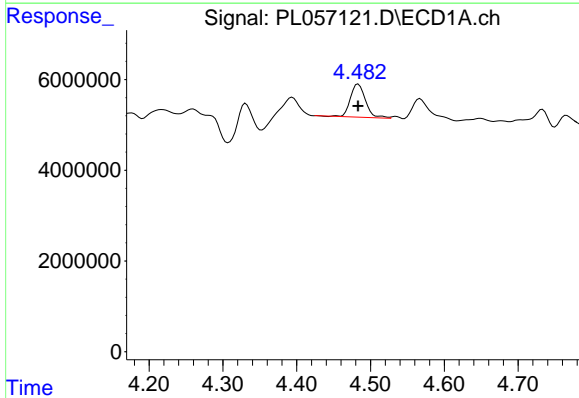
R.T.: 3.461 min
 Delta R.T.: 0.000 min
 Response: 114158987
 Conc: 13.40 ng/ml

Instrument :
 ECD_L
 ClientSampleId :
 CL-01-030520



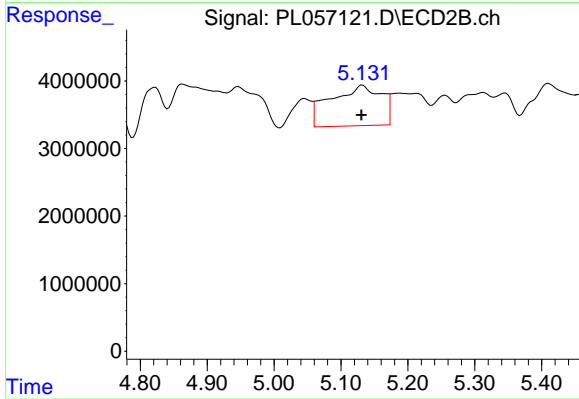
#1 Tetrachloro-m-xylene

R.T.: 3.959 min
 Delta R.T.: 0.001 min
 Response: 33324523
 Conc: 15.62 ng/ml



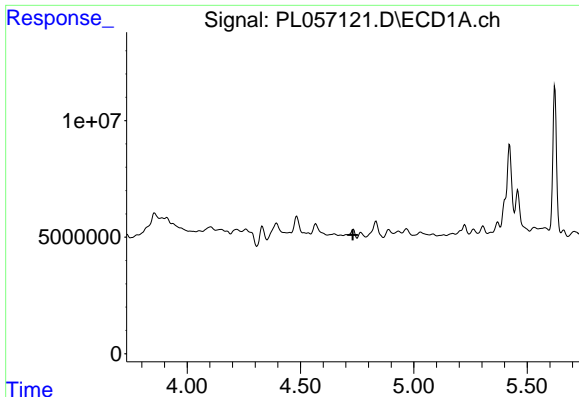
#4 Heptachlor

R.T.: 4.483 min
 Delta R.T.: 0.000 min
 Response: 10439709
 Conc: 0.77 ng/ml



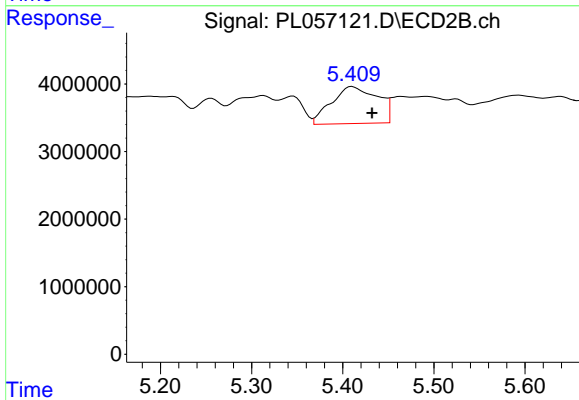
#4 Heptachlor

R.T.: 5.132 min
 Delta R.T.: 0.002 min
 Response: 31401323
 Conc: 10.09 ng/ml

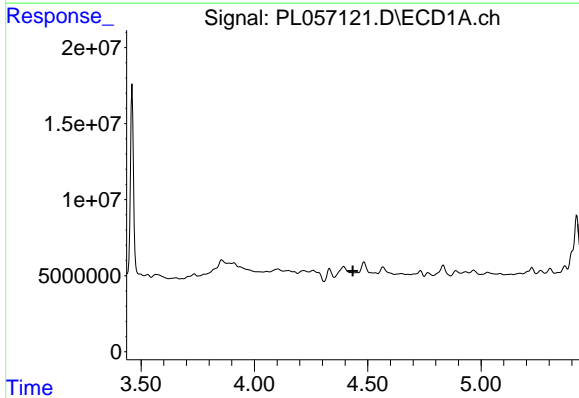


#5 Aldrin
 R.T.: 0.000 min
 Exp R.T. : 4.731 min
 Response: 0
 Conc: N.D.

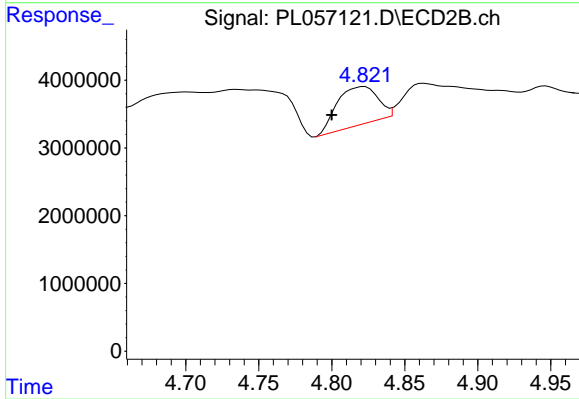
Instrument :
 ECD_L
 ClientSampleId :
 CL-01-030520



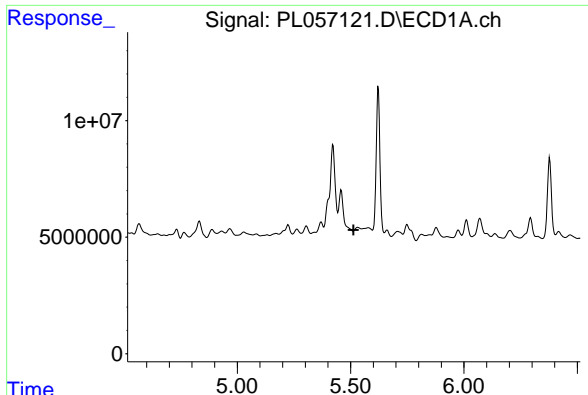
#5 Aldrin
 R.T.: 5.410 min
 Delta R.T.: -0.022 min
 Response: 19161253
 Conc: 6.41 ng/ml



#6 beta-BHC
 R.T.: 0.000 min
 Exp R.T. : 4.434 min
 Response: 0
 Conc: N.D.

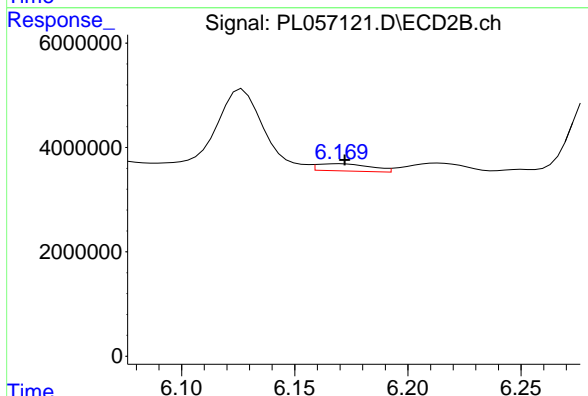


#6 beta-BHC
 R.T.: 4.822 min
 Delta R.T.: 0.022 min
 Response: 10806815
 Conc: 7.67 ng/ml

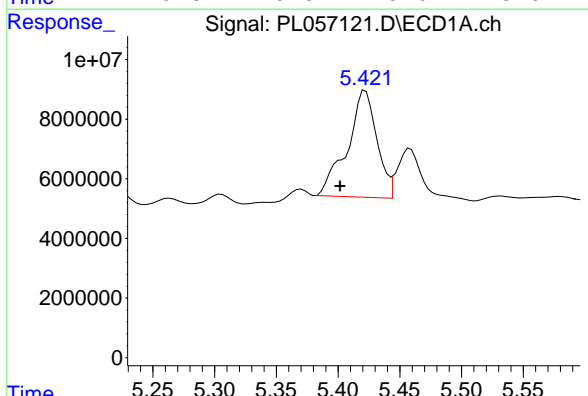


#9 Endosulfan I
 R.T.: 0.000 min
 Exp R.T.: 5.513 min
 Response: 0
 Conc: N.D.

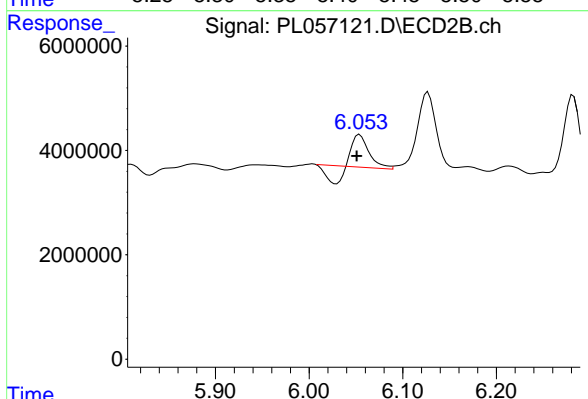
Instrument :
 ECD_L
 ClientSampleId :
 CL-01-030520



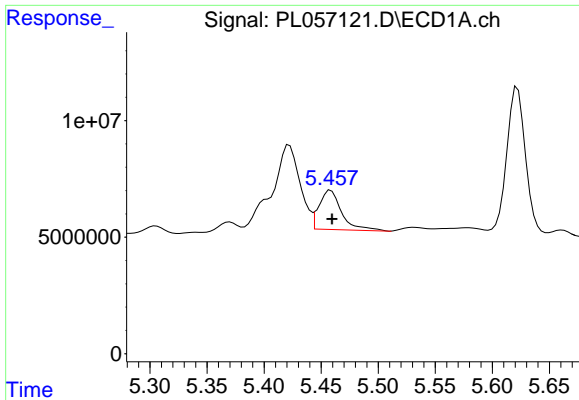
#9 Endosulfan I
 R.T.: 6.170 min
 Delta R.T.: -0.002 min
 Response: 2270817
 Conc: 0.81 ng/ml



#10 gamma-Chlordane
 R.T.: 5.422 min
 Delta R.T.: 0.021 min
 Response: 59707659
 Conc: 4.81 ng/ml

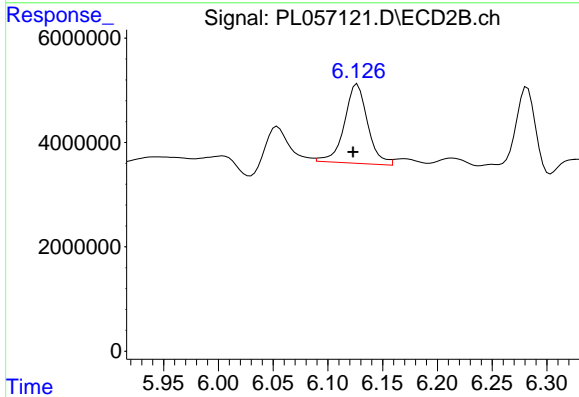


#10 gamma-Chlordane
 R.T.: 6.054 min
 Delta R.T.: 0.003 min
 Response: 4185539
 Conc: 1.40 ng/ml

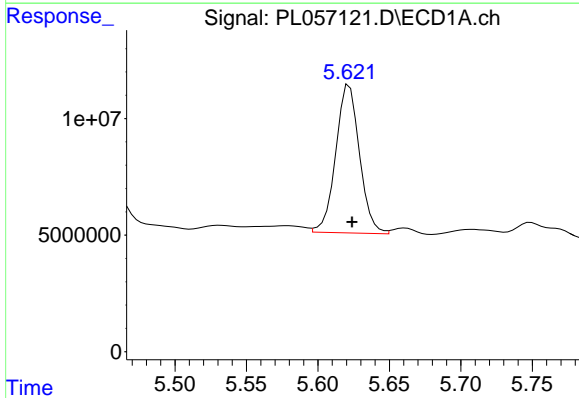


#11 alpha-Chlordane
 R.T.: 5.458 min
 Delta R.T.: -0.001 min
 Response: 23197942
 Conc: 1.89 ng/ml

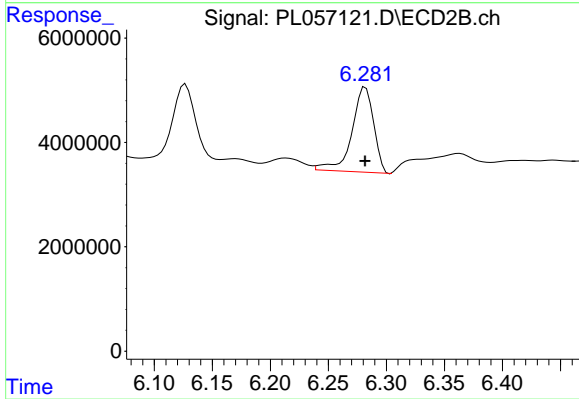
Instrument :
 ECD_L
 ClientSampleId :
 CL-01-030520



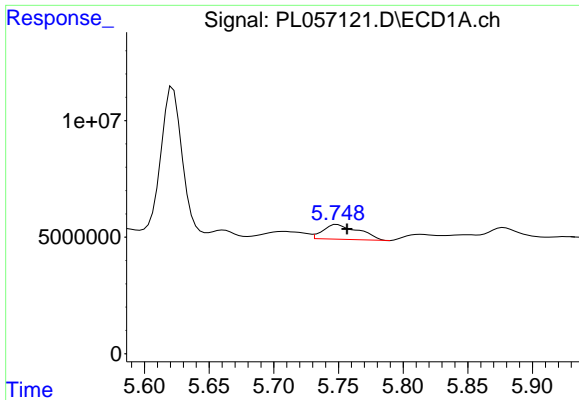
#11 alpha-Chlordane
 R.T.: 6.127 min
 Delta R.T.: 0.004 min
 Response: 22425411
 Conc: 7.44 ng/ml



#12 4,4'-DDE
 R.T.: 5.622 min
 Delta R.T.: -0.002 min
 Response: 73596093
 Conc: 6.28 ng/ml

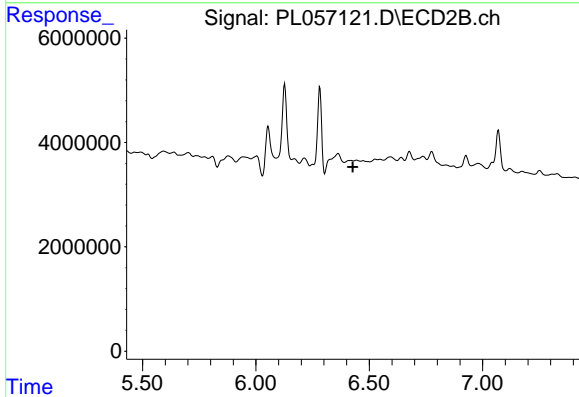


#12 4,4'-DDE
 R.T.: 6.282 min
 Delta R.T.: 0.000 min
 Response: 21257926
 Conc: 7.49 ng/ml

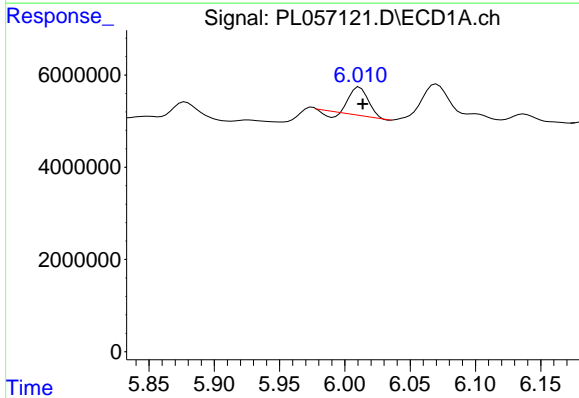


#13 Dieldrin
 R.T.: 5.749 min
 Delta R.T.: -0.008 min
 Response: 12168463
 Conc: 1.00 ng/ml

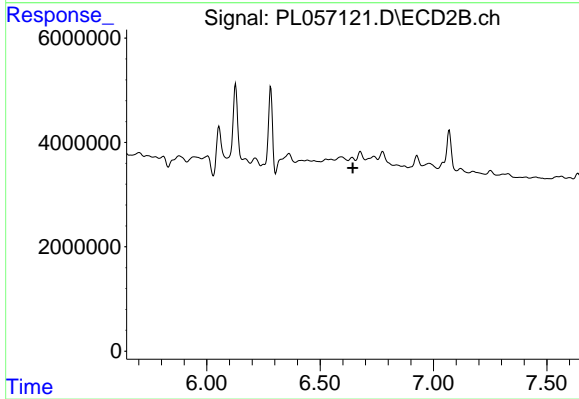
Instrument :
 ECD_L
 ClientSampleId :
 CL-01-030520



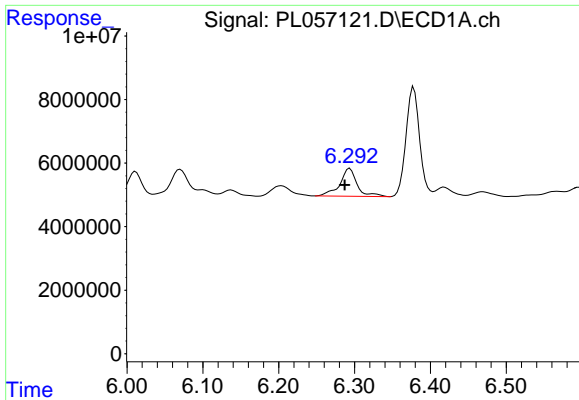
#13 Dieldrin
 R.T.: 0.000 min
 Exp R.T. : 6.428 min
 Response: 0
 Conc: N.D.



#14 Endrin
 R.T.: 6.011 min
 Delta R.T.: -0.002 min
 Response: 5605873
 Conc: 0.52 ng/ml

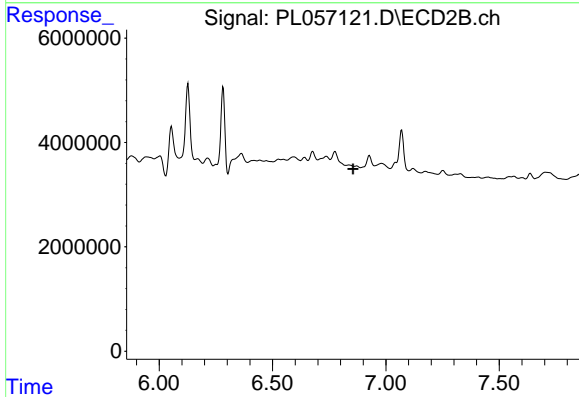


#14 Endrin
 R.T.: 0.000 min
 Exp R.T. : 6.645 min
 Response: 0
 Conc: N.D.

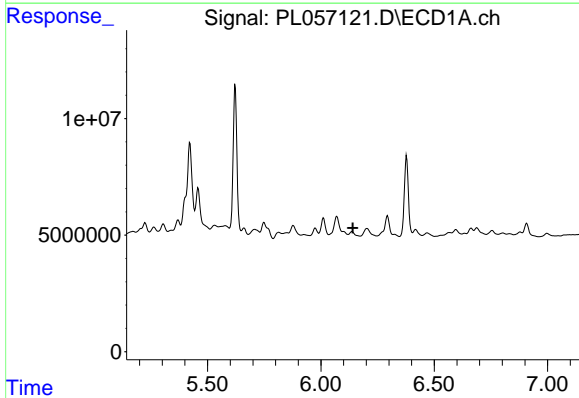


#15 Endosulfan II
 R.T.: 6.294 min
 Delta R.T.: 0.007 min
 Response: 13904853
 Conc: 1.29 ng/ml

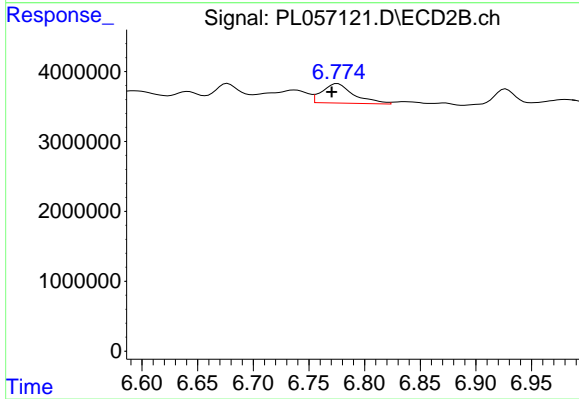
Instrument :
 ECD_L
ClientSampleId :
 CL-01-030520



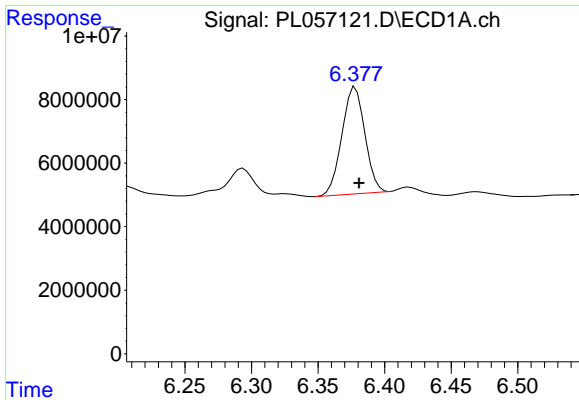
#15 Endosulfan II
 R.T.: 0.000 min
 Exp R.T. : 6.855 min
 Response: 0
 Conc: N.D.



#16 4,4'-DDD
 R.T.: 0.000 min
 Exp R.T. : 6.141 min
 Response: 0
 Conc: N.D.

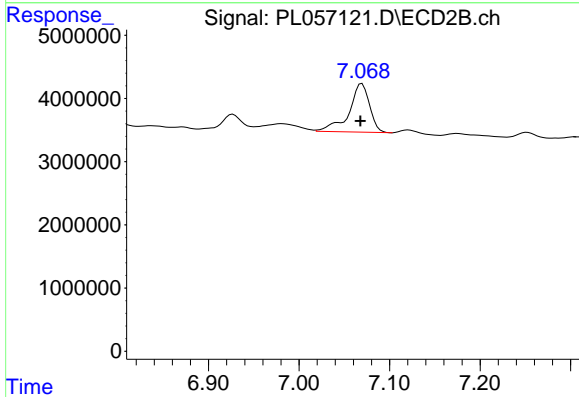


#16 4,4'-DDD
 R.T.: 6.776 min
 Delta R.T.: 0.005 min
 Response: 5488806
 Conc: 2.25 ng/ml

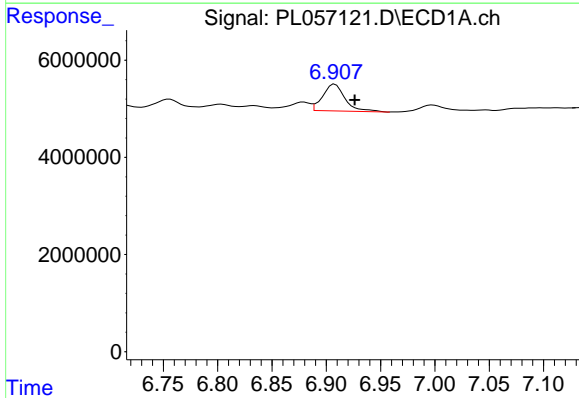


#17 4,4'-DDT
 R.T.: 6.378 min
 Delta R.T.: -0.003 min
 Response: 40350315
 Conc: 4.12 ng/ml

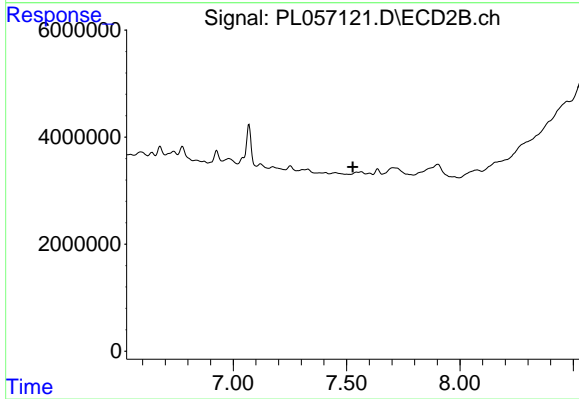
Instrument :
 ECD_L
ClientSampleId :
 CL-01-030520



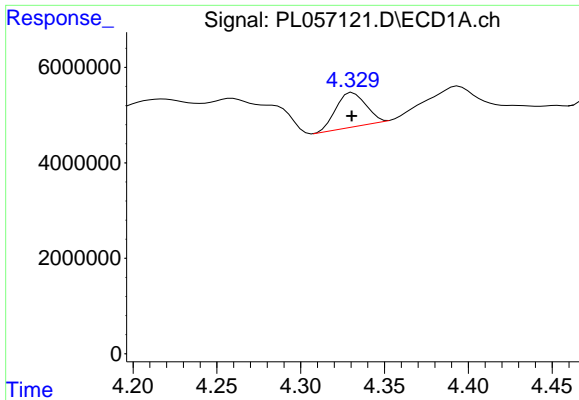
#17 4,4'-DDT
 R.T.: 7.070 min
 Delta R.T.: 0.002 min
 Response: 12172151
 Conc: 4.95 ng/ml



#20 Methoxychlor
 R.T.: 6.908 min
 Delta R.T.: -0.018 min
 Response: 7913868
 Conc: 1.59 ng/ml

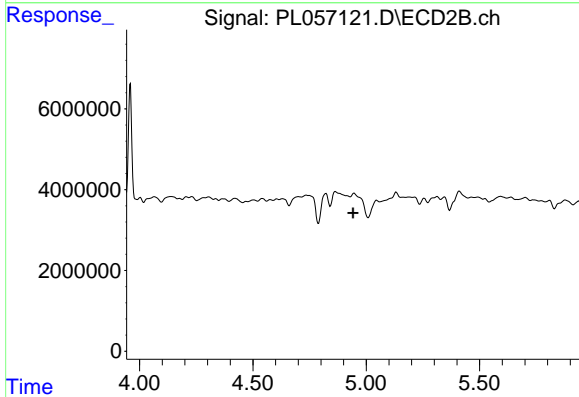


#20 Methoxychlor
 R.T.: 0.000 min
 Exp R.T. : 7.527 min
 Response: 0
 Conc: N.D.

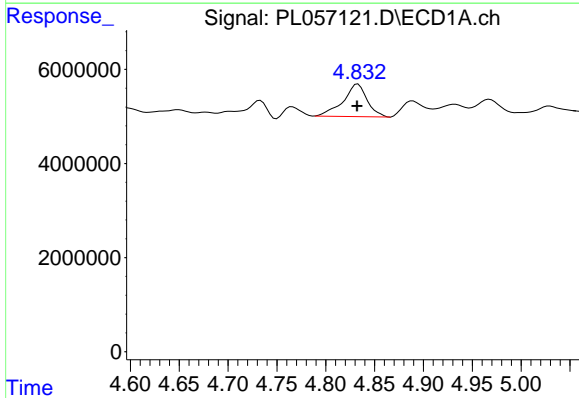


#23 Chlordane-1
 R.T.: 4.331 min
 Delta R.T.: 0.000 min
 Response: 8859688
 Conc: 29.15 ng/ml

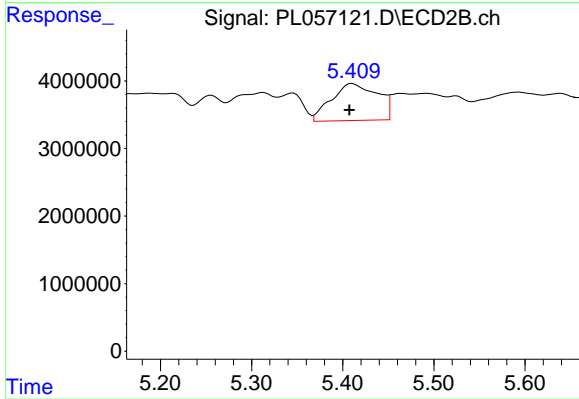
Instrument :
 ECD_L
 ClientSampleId :
 CL-01-030520



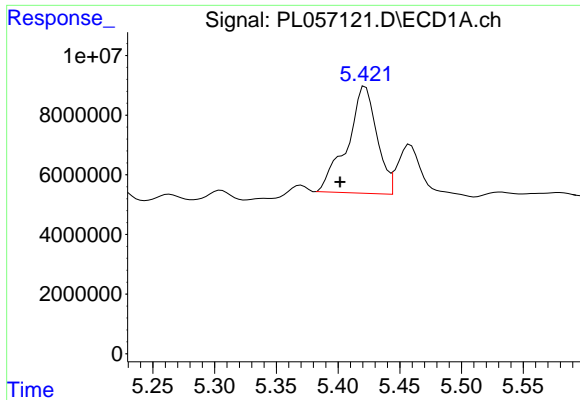
#23 Chlordane-1
 R.T.: 0.000 min
 Exp R.T. : 4.942 min
 Response: 0
 Conc: N.D.



#24 Chlordane-2
 R.T.: 4.833 min
 Delta R.T.: 0.000 min
 Response: 11810300
 Conc: 33.49 ng/ml

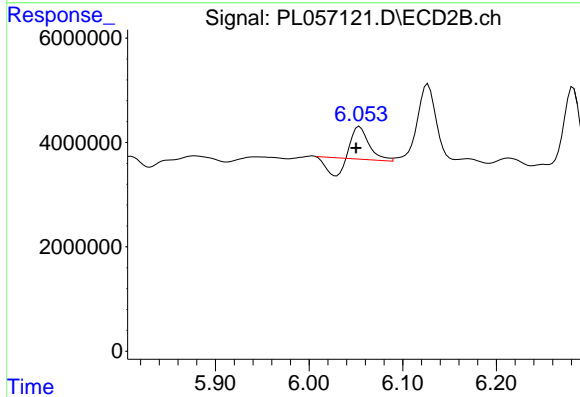


#24 Chlordane-2
 R.T.: 5.410 min
 Delta R.T.: 0.003 min
 Response: 19161253
 Conc: 200.74 ng/ml

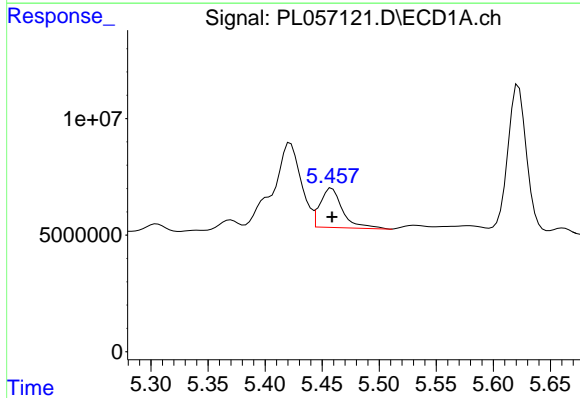


#25 Chlordane-3
 R.T.: 5.422 min
 Delta R.T.: 0.021 min
 Response: 59707659
 Conc: 55.36 ng/ml

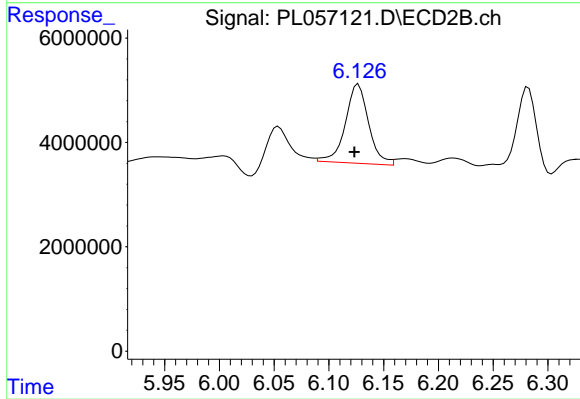
Instrument :
 ECD_L
 ClientSampleId :
 CL-01-030520



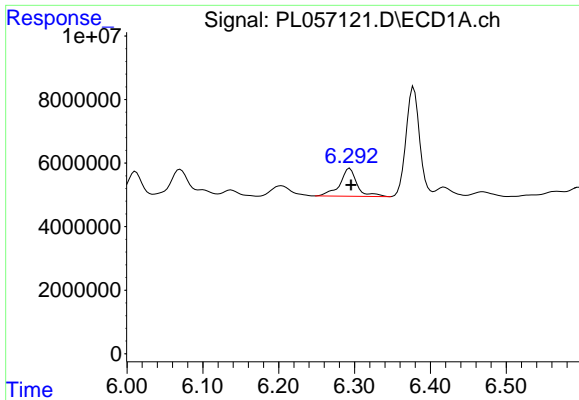
#25 Chlordane-3
 R.T.: 6.054 min
 Delta R.T.: 0.004 min
 Response: 4185539
 Conc: 11.04 ng/ml



#26 Chlordane-4
 R.T.: 5.458 min
 Delta R.T.: 0.000 min
 Response: 23197942
 Conc: 25.24 ng/ml

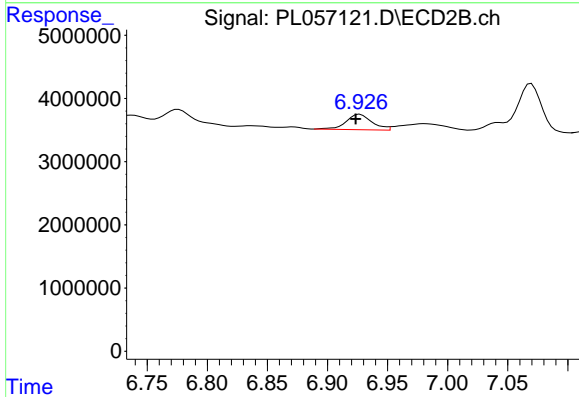


#26 Chlordane-4
 R.T.: 6.127 min
 Delta R.T.: 0.004 min
 Response: 22425411
 Conc: 48.91 ng/ml

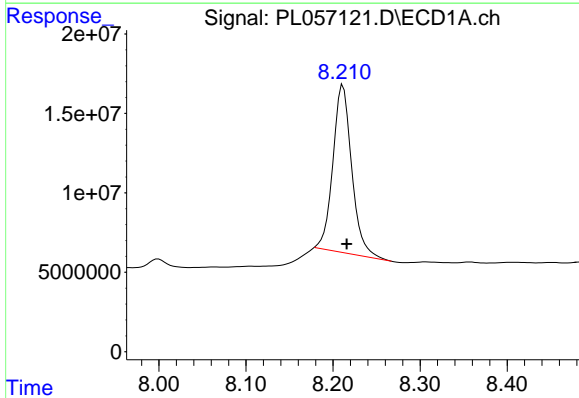


#27 Chlordane-5
 R.T.: 6.294 min
 Delta R.T.: -0.002 min
 Response: 13904853
 Conc: 38.28 ng/ml

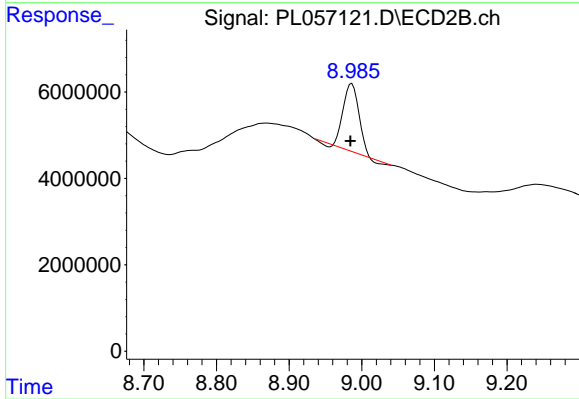
Instrument :
 ECD_L
 ClientSampleId :
 CL-01-030520



#27 Chlordane-5
 R.T.: 6.927 min
 Delta R.T.: 0.003 min
 Response: 3658552
 Conc: 43.85 ng/ml



#28 Decachlorobiphenyl
 R.T.: 8.211 min
 Delta R.T.: -0.004 min
 Response: 157993856
 Conc: 16.35 ng/ml



#28 Decachlorobiphenyl
 R.T.: 8.986 min
 Delta R.T.: 0.002 min
 Response: 21836434
 Conc: 10.28 ng/ml