

Data Path : Z:\pestpcbsrv\HPCHEM1\ECD_L\Data\PL030621\
 Data File : PL065119.D
 Signal(s) : Signal #1: ECD1A.ch Signal #2: ECD2B.ch
 Acq On : 05 Mar 2021 19:08
 Operator : AR\AJ
 Sample : PSTDCCCC50
 Misc :
 ALS Vial : 4 Sample Multiplier: 1

Instrument :
 ECD_L
 ClientSampleId :

Integration File signal 1: autoint1.e
 Integration File signal 2: autoint2.e
 Quant Time: Mar 05 22:17:44 2021
 Quant Method : Z:\pestpcbsrv\HPCHEM1\ECD_L\methods\PL030521.M
 Quant Title : GC Extractables
 QLast Update : Fri Mar 05 02:26:14 2021
 Response via : Initial Calibration
 Integrator: ChemStation

Volume Inj. : 1 µl
 Signal #1 Phase : ZB-MR2 Signal #2 Phase: ZB-MR1
 Signal #1 Info : 30M x 0.32mm x0.2 Signal #2 Info : 30M x 0.32mm x0.5µm

	Compound	RT#1	RT#2	Resp#1	Resp#2	ng/ml	ng/ml

System Monitoring Compounds							
1)	SA Tetrachlo...	3.422	4.098	158.4E6	130.1E6	53.875	52.400
28)	SA Decachlor...	8.142	9.256	129.6E6	108.3E6	46.696	49.315
Target Compounds							
2)	A alpha-BHC	3.855	4.501	255.5E6	185.1E6	54.210	54.373
3)	MA gamma-BHC...	4.135	4.793	230.1E6	169.2E6	53.169	53.558
4)	MA Heptachlor	4.431	5.304	225.0E6	173.6E6	51.148	51.344
5)	MB Aldrin	4.675	5.614	212.5E6	152.9E6	52.042	51.776
6)	B beta-BHC	4.385	4.972	87210552	79841720	46.693	52.218
7)	B delta-BHC	4.586	5.193	226.5E6	156.2E6	51.863	51.565
8)	B Heptachlo...	5.117	6.009	194.5E6	129.9E6	51.163	53.626
9)	A Endosulfan I	5.452	6.371	181.0E6	128.8E6	50.606	50.746
10)	B gamma-Chl...	5.342	6.245	197.3E6	141.9E6	50.393	50.609
11)	B alpha-Chl...	5.400	6.317	191.2E6	139.9E6	49.888	50.621
12)	B 4,4'-DDE	5.566	6.474	179.9E6	126.8E6	50.049	50.730
13)	MA Dieldrin	5.693	6.632	185.7E6	129.1E6	50.207	50.415
14)	MA Endrin	5.948	6.853	160.5E6	101.6E6	46.764	48.075
15)	B Endosulfa...	6.221	7.068	154.6E6	105.0E6	49.248	49.466
16)	A 4,4'-DDD	6.079	6.973	150.5E6	103.4E6	50.564	51.249
17)	MA 4,4'-DDT	6.317	7.272	130.0E6	94314238	46.647	48.120
18)	B Endrin al...	6.389	7.194	122.5E6	86966491	47.785	49.155
19)	B Endosulfa...	6.602	7.418	159.5E6	107.4E6	47.196	49.317
20)	A Methoxychlor	6.865	7.734	70167576	53641750	44.446	48.397
21)	B Endrin ke...	7.089	7.897	170.6E6	112.6E6	49.436	52.692
22)	Mirex	7.271	8.348	130.2E6	85080962	48.552	50.305
23)	Chlordane-1	4.308f	0.000	6677636	0	52.390	N.D. #
24)	Chlordane-2	0.000	5.614f	0	152.9E6	N.D.	1377.199 #
25)	Chlordane-3	5.342	6.245	197.3E6	141.9E6	494.669	353.339 #
26)	Chlordane-4	5.400	6.317	191.2E6	139.9E6	569.882	286.581 #
27)	Chlordane-5	6.221	0.000	154.6E6	0	1190.376	N.D. #

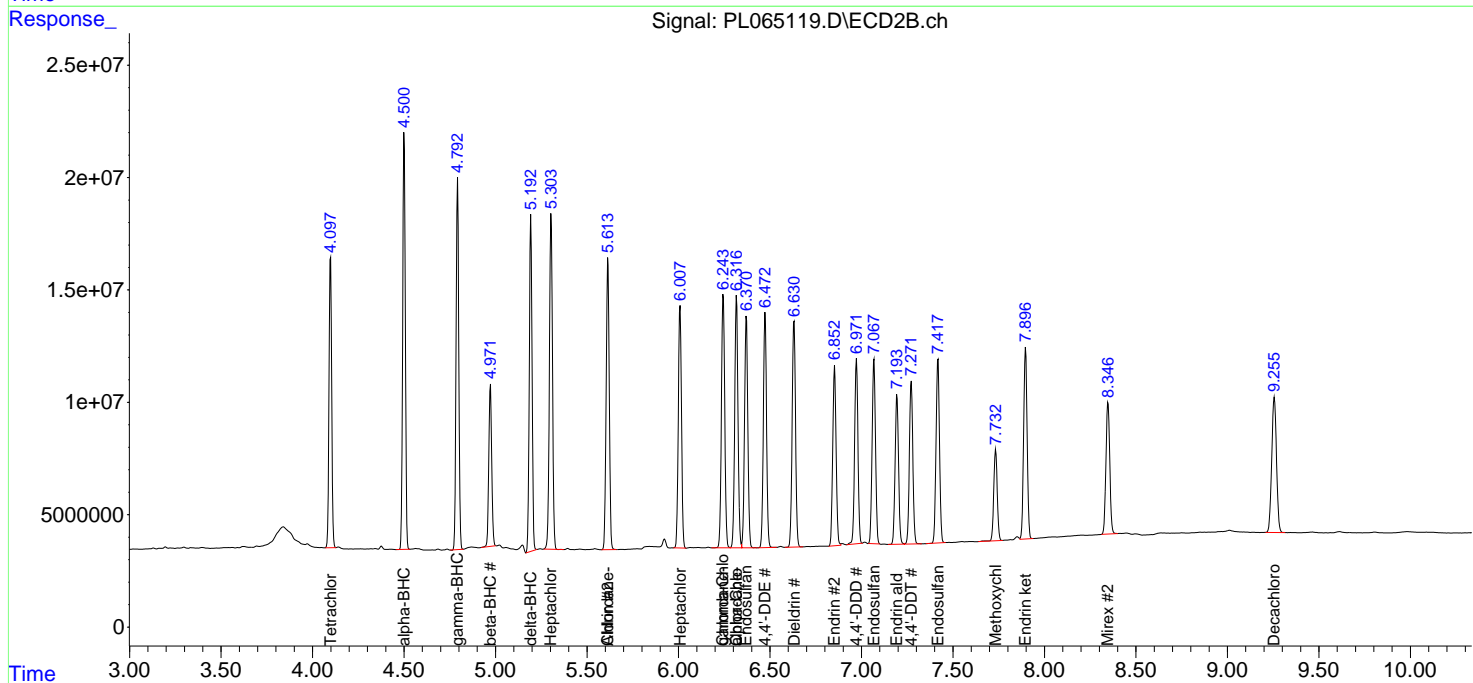
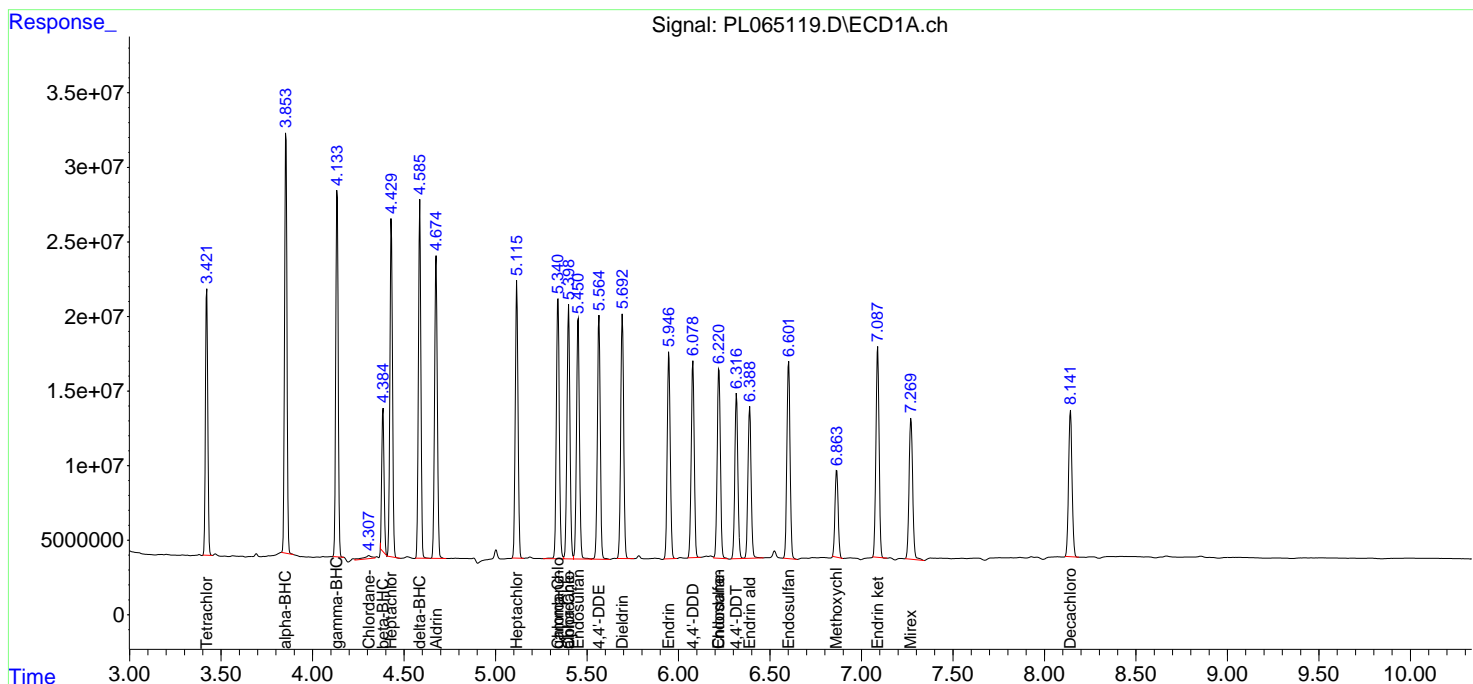
(f)=RT Delta > 1/2 Window (#)=Amounts differ by > 25% (m)=manual int.

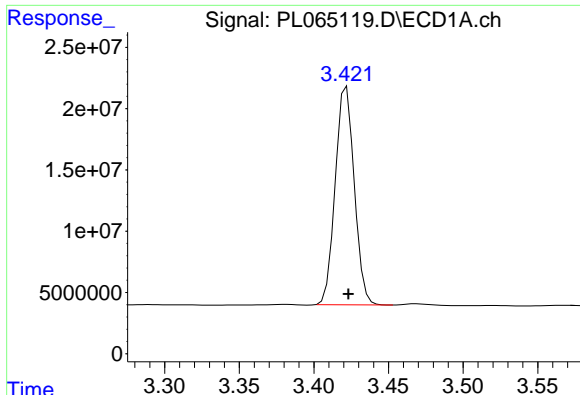
Data Path : Z:\pestpcbsrv\HPCHEM1\ECD_L\Data\PL030621\
 Data File : PL065119.D
 Signal(s) : Signal #1: ECD1A.ch Signal #2: ECD2B.ch
 Acq On : 05 Mar 2021 19:08
 Operator : AR\AJ
 Sample : PSTDCCC50
 Misc :
 ALS Vial : 4 Sample Multiplier: 1

Instrument :
 ECD_L
 ClientSampled :

Integration File signal 1: autoint1.e
 Integration File signal 2: autoint2.e
 Quant Time: Mar 05 22:17:44 2021
 Quant Method : Z:\pestpcbsrv\HPCHEM1\ECD_L\methods\PL030521.M
 Quant Title : GC Extractables
 QLast Update : Fri Mar 05 02:26:14 2021
 Response via : Initial Calibration
 Integrator: ChemStation

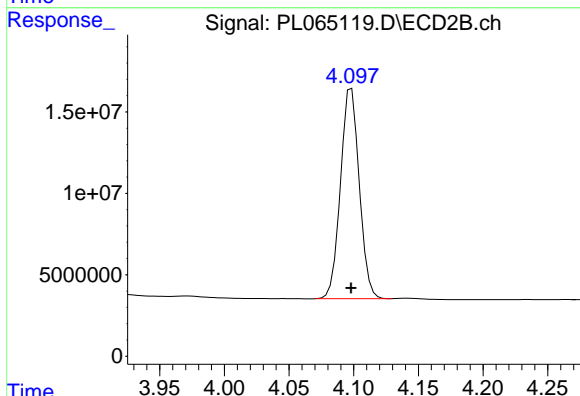
Volume Inj. : 1 µl
 Signal #1 Phase : ZB-MR2 Signal #2 Phase: ZB-MR1
 Signal #1 Info : 30M x 0.32mm x0.2 Signal #2 Info : 30M x 0.32mm x0.5µm



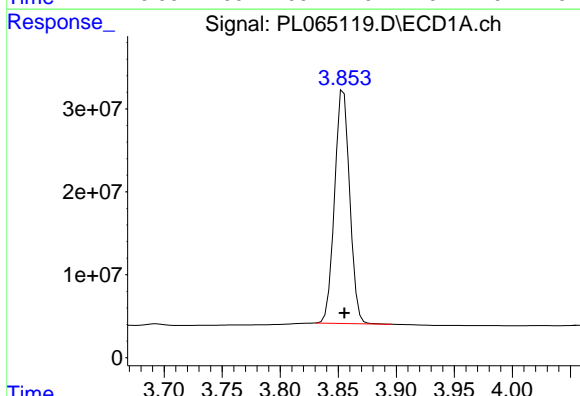


#1 Tetrachloro-m-xylene
R.T.: 3.422 min
Delta R.T.: -0.001 min
Response: 158415349
Conc: 53.87 ng/ml

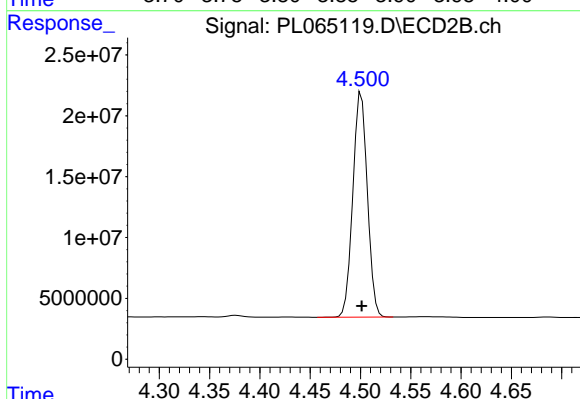
Instrument :
ECD_L
ClientSampled :



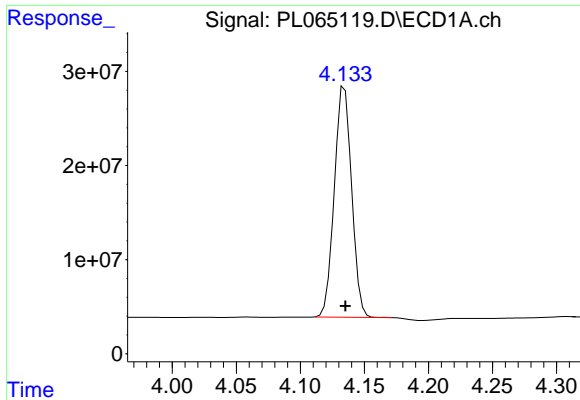
#1 Tetrachloro-m-xylene
R.T.: 4.098 min
Delta R.T.: 0.000 min
Response: 130121383
Conc: 52.40 ng/ml



#2 alpha-BHC
R.T.: 3.855 min
Delta R.T.: 0.000 min
Response: 255539337
Conc: 54.21 ng/ml

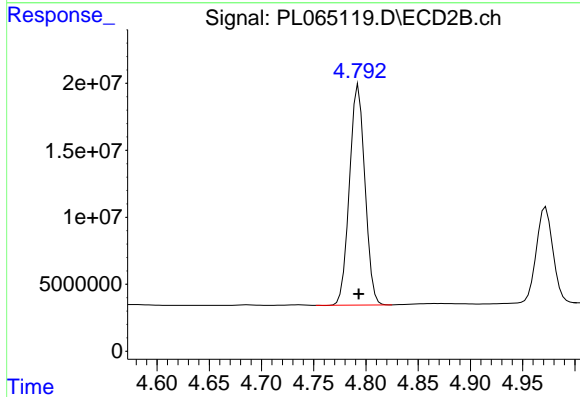


#2 alpha-BHC
R.T.: 4.501 min
Delta R.T.: 0.000 min
Response: 185118592
Conc: 54.37 ng/ml

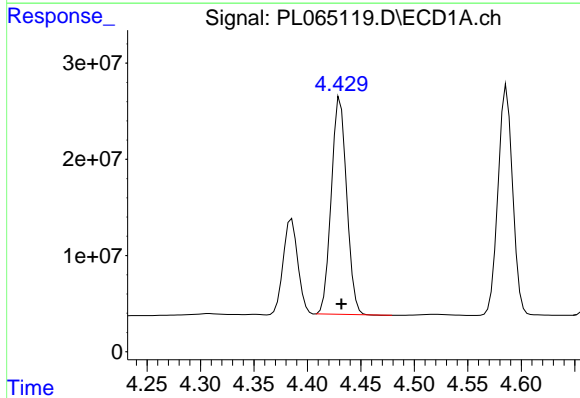


#3 gamma-BHC (Lindane)
 R.T.: 4.135 min
 Delta R.T.: 0.000 min
 Response: 230124914
 Conc: 53.17 ng/ml

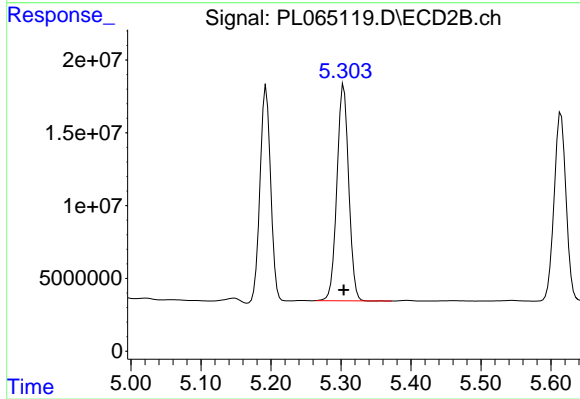
Instrument :
 ECD_L
 ClientSampleId :



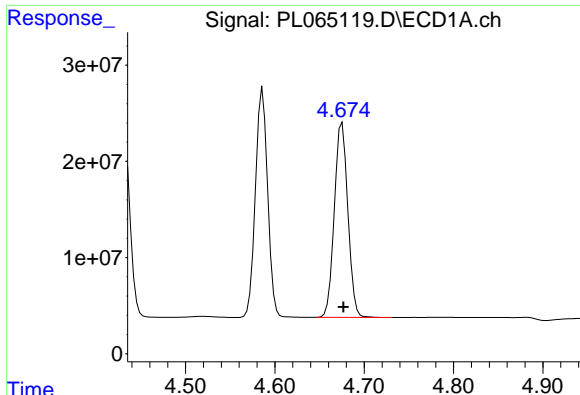
#3 gamma-BHC (Lindane)
 R.T.: 4.793 min
 Delta R.T.: 0.000 min
 Response: 169227250
 Conc: 53.56 ng/ml



#4 Heptachlor
 R.T.: 4.431 min
 Delta R.T.: 0.000 min
 Response: 224998571
 Conc: 51.15 ng/ml

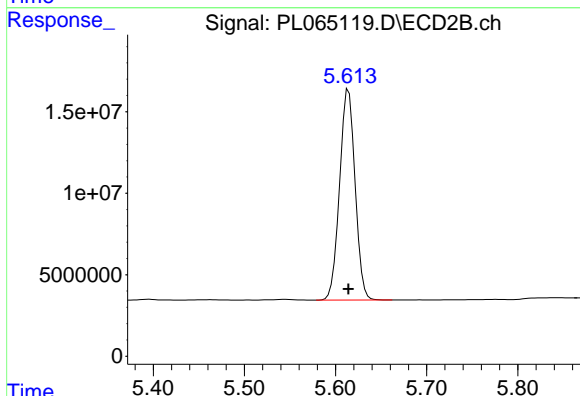


#4 Heptachlor
 R.T.: 5.304 min
 Delta R.T.: 0.000 min
 Response: 173603514
 Conc: 51.34 ng/ml

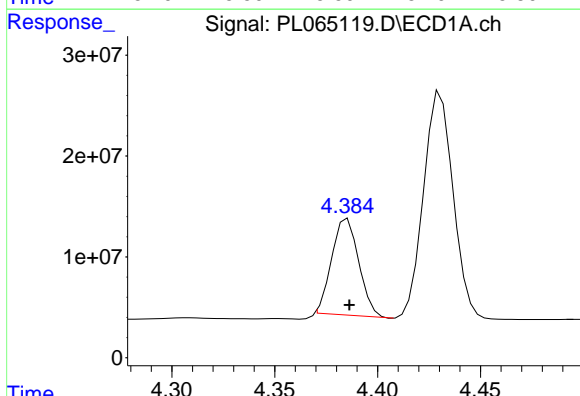


#5 Aldrin
 R.T.: 4.675 min
 Delta R.T.: -0.001 min
 Response: 212505655
 Conc: 52.04 ng/ml

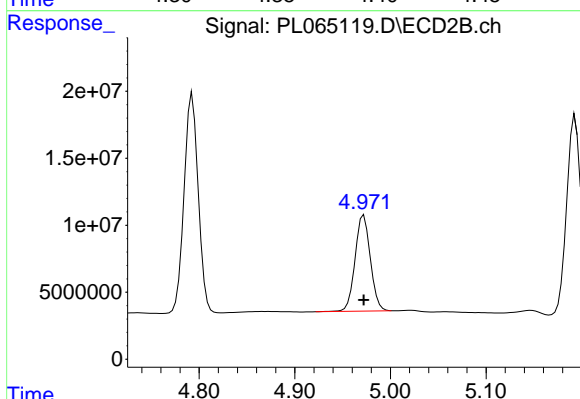
Instrument :
 ECD_L
 ClientSampled :



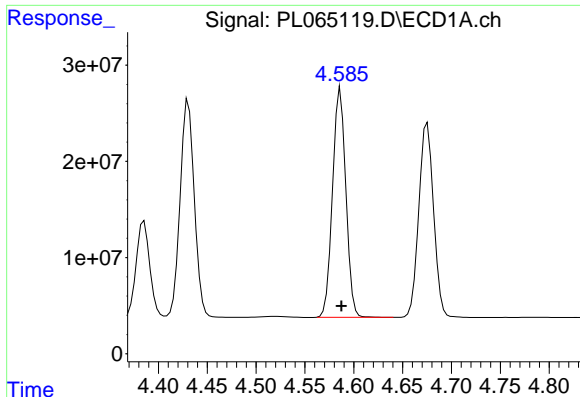
#5 Aldrin
 R.T.: 5.614 min
 Delta R.T.: 0.000 min
 Response: 152937032
 Conc: 51.78 ng/ml



#6 beta-BHC
 R.T.: 4.385 min
 Delta R.T.: 0.000 min
 Response: 87210552
 Conc: 46.69 ng/ml



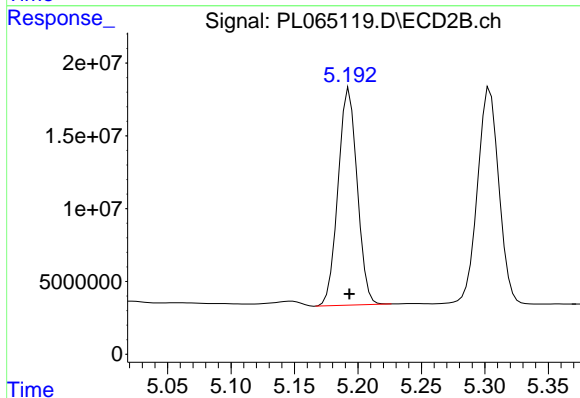
#6 beta-BHC
 R.T.: 4.972 min
 Delta R.T.: 0.000 min
 Response: 79841720
 Conc: 52.22 ng/ml



#7 delta-BHC

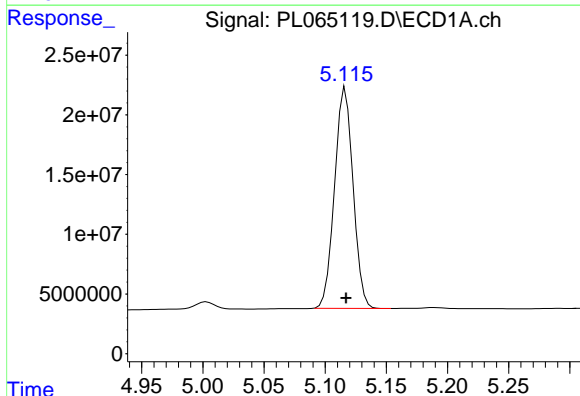
R.T.: 4.586 min
Delta R.T.: -0.001 min
Response: 226460045
Conc: 51.86 ng/ml

Instrument :
ECD_L
ClientSampled :



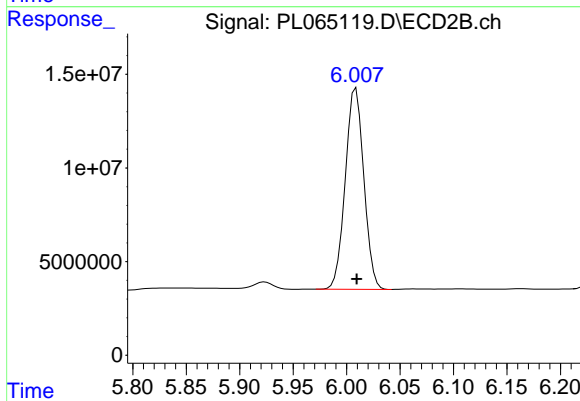
#7 delta-BHC

R.T.: 5.193 min
Delta R.T.: 0.000 min
Response: 156180144
Conc: 51.57 ng/ml



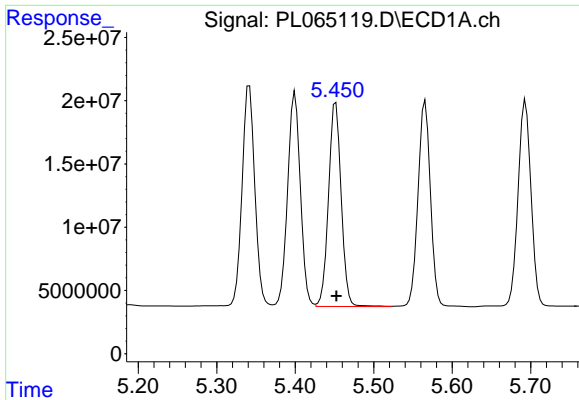
#8 Heptachlor epoxide

R.T.: 5.117 min
Delta R.T.: 0.000 min
Response: 194496840
Conc: 51.16 ng/ml



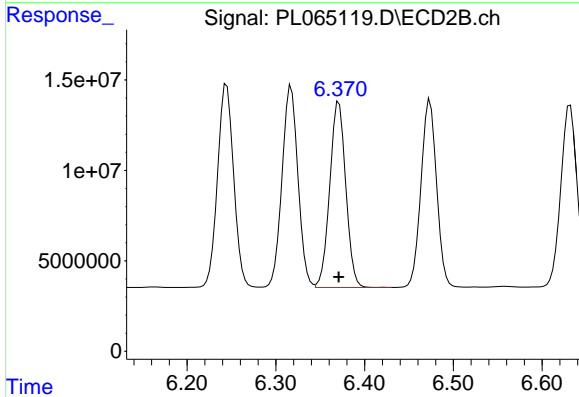
#8 Heptachlor epoxide

R.T.: 6.009 min
Delta R.T.: 0.000 min
Response: 129860267
Conc: 53.63 ng/ml

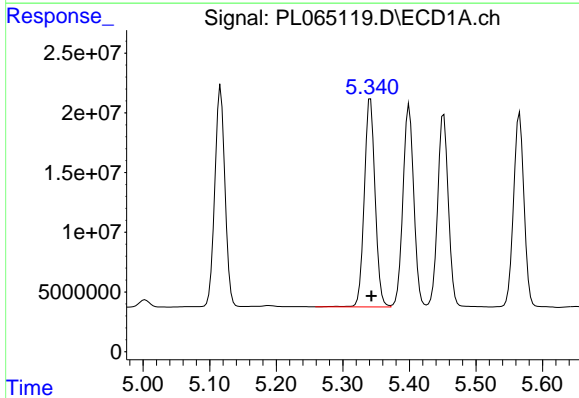


#9 Endosulfan I
 R.T.: 5.452 min
 Delta R.T.: -0.001 min
 Response: 180974724
 Conc: 50.61 ng/ml

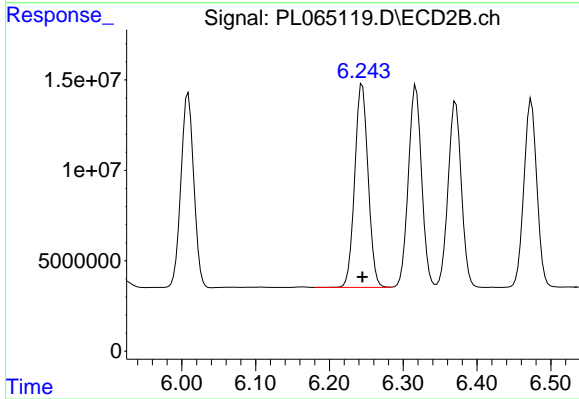
Instrument :
 ECD_L
 ClientSampleId :



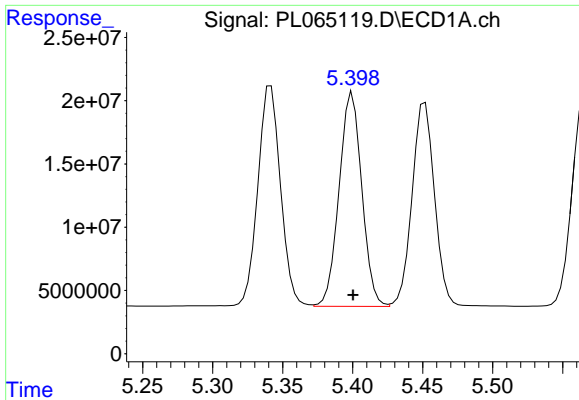
#9 Endosulfan I
 R.T.: 6.371 min
 Delta R.T.: 0.000 min
 Response: 128823539
 Conc: 50.75 ng/ml



#10 gamma-Chlordane
 R.T.: 5.342 min
 Delta R.T.: -0.001 min
 Response: 197338347
 Conc: 50.39 ng/ml

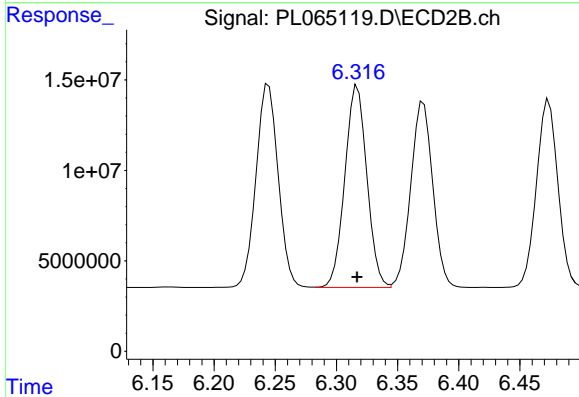


#10 gamma-Chlordane
 R.T.: 6.245 min
 Delta R.T.: 0.000 min
 Response: 141924906
 Conc: 50.61 ng/ml

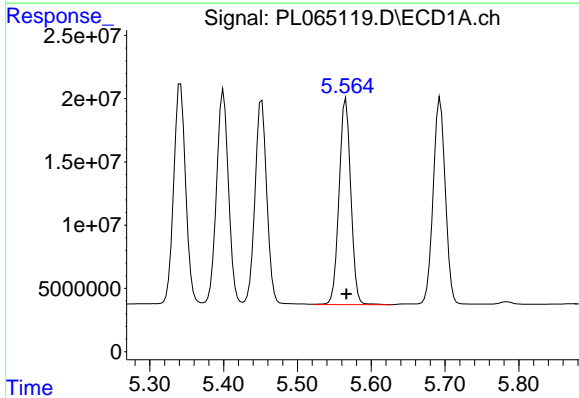


#11 alpha-Chlordane
 R.T.: 5.400 min
 Delta R.T.: 0.000 min
 Response: 191174753
 Conc: 49.89 ng/ml

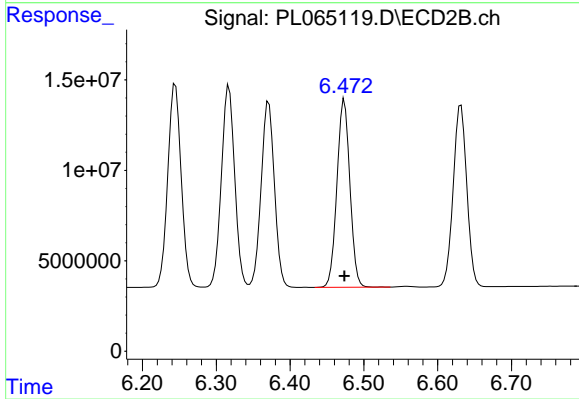
Instrument :
 ECD_L
 ClientSampled :



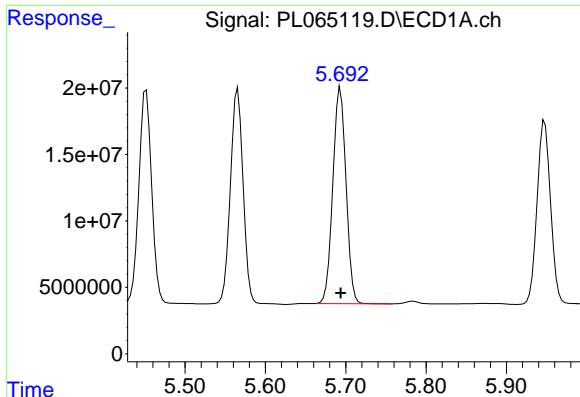
#11 alpha-Chlordane
 R.T.: 6.317 min
 Delta R.T.: 0.000 min
 Response: 139917040
 Conc: 50.62 ng/ml



#12 4,4'-DDE
 R.T.: 5.566 min
 Delta R.T.: 0.000 min
 Response: 179892977
 Conc: 50.05 ng/ml



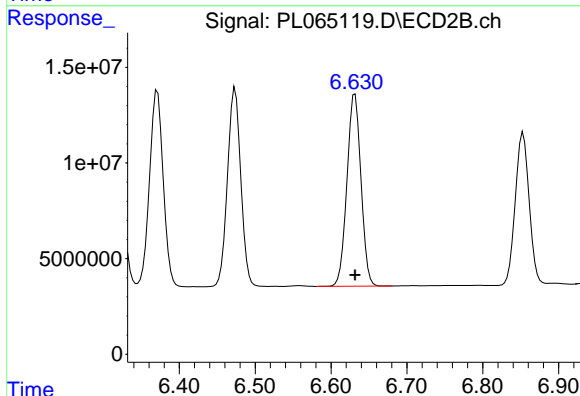
#12 4,4'-DDE
 R.T.: 6.474 min
 Delta R.T.: 0.000 min
 Response: 126824155
 Conc: 50.73 ng/ml



#13 Dieldrin

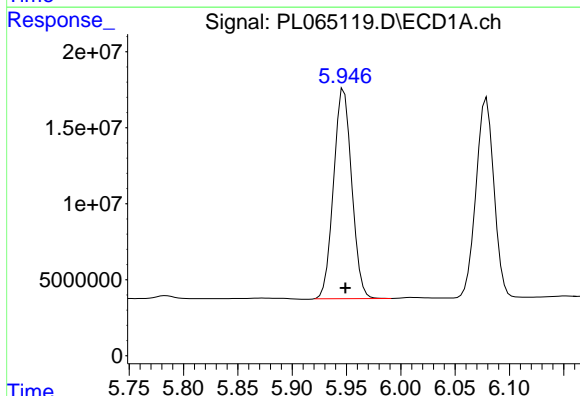
R.T.: 5.693 min
 Delta R.T.: 0.000 min
 Response: 185711906
 Conc: 50.21 ng/ml

Instrument :
 ECD_L
 ClientSampled :



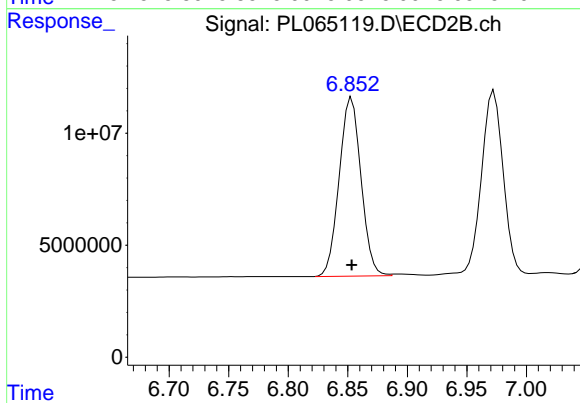
#13 Dieldrin

R.T.: 6.632 min
 Delta R.T.: 0.000 min
 Response: 129138599
 Conc: 50.42 ng/ml



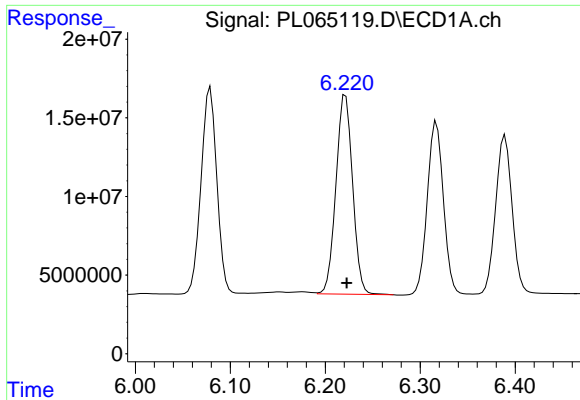
#14 Endrin

R.T.: 5.948 min
 Delta R.T.: -0.001 min
 Response: 160523792
 Conc: 46.76 ng/ml



#14 Endrin

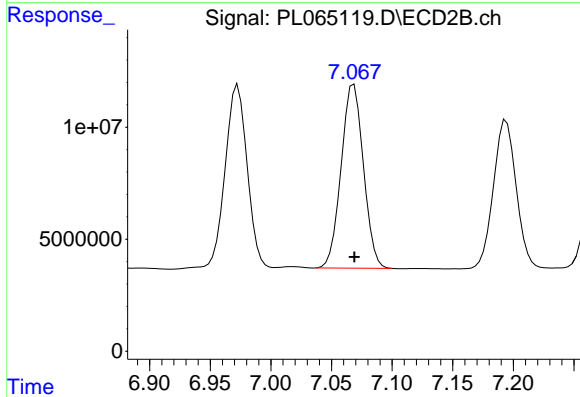
R.T.: 6.853 min
 Delta R.T.: 0.000 min
 Response: 101561282
 Conc: 48.08 ng/ml



#15 Endosulfan II

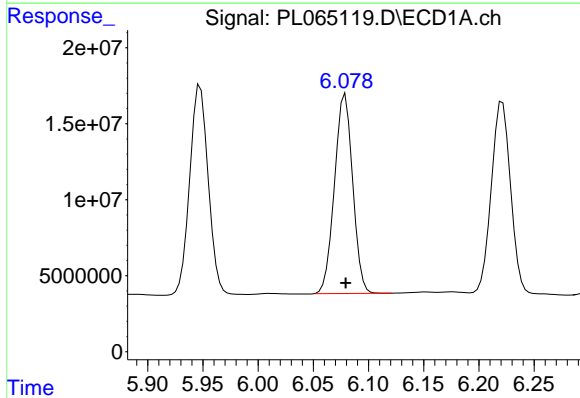
R.T.: 6.221 min
 Delta R.T.: -0.001 min
 Response: 154571653
 Conc: 49.25 ng/ml

Instrument :
 ECD_L
 ClientSampled :



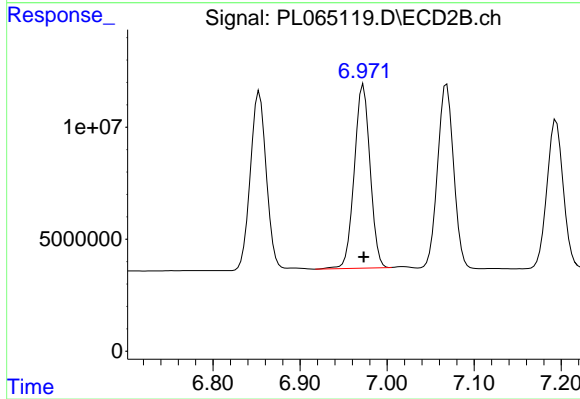
#15 Endosulfan II

R.T.: 7.068 min
 Delta R.T.: 0.000 min
 Response: 104973887
 Conc: 49.47 ng/ml



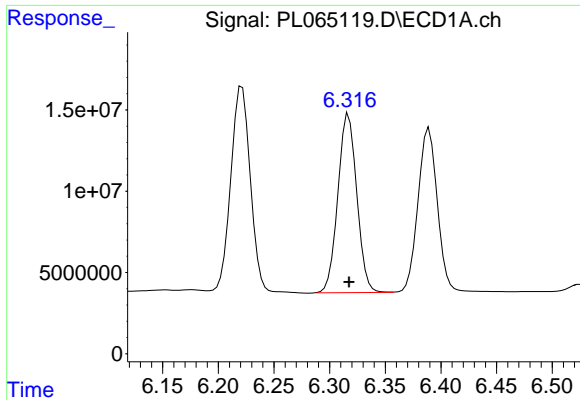
#16 4,4'-DDD

R.T.: 6.079 min
 Delta R.T.: 0.000 min
 Response: 150523628
 Conc: 50.56 ng/ml



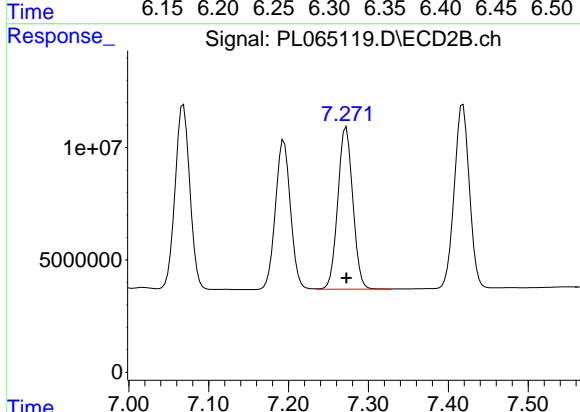
#16 4,4'-DDD

R.T.: 6.973 min
 Delta R.T.: 0.000 min
 Response: 103402695
 Conc: 51.25 ng/ml

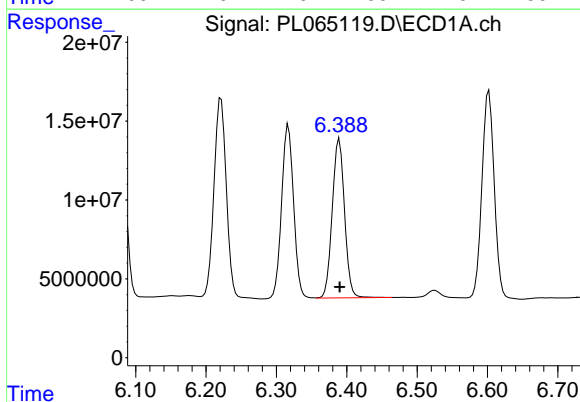


#17 4,4'-DDT
 R.T.: 6.317 min
 Delta R.T.: 0.000 min
 Response: 130046966
 Conc: 46.65 ng/ml

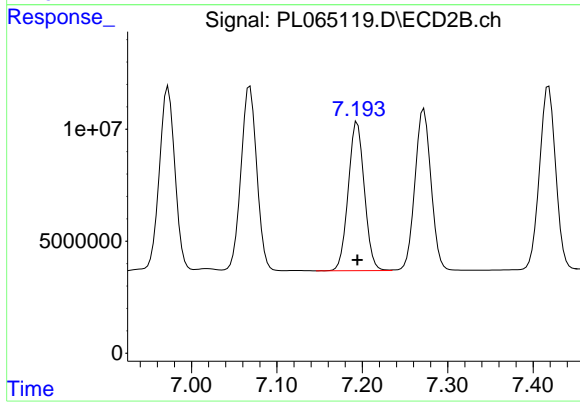
Instrument :
 ECD_L
 ClientSampled :



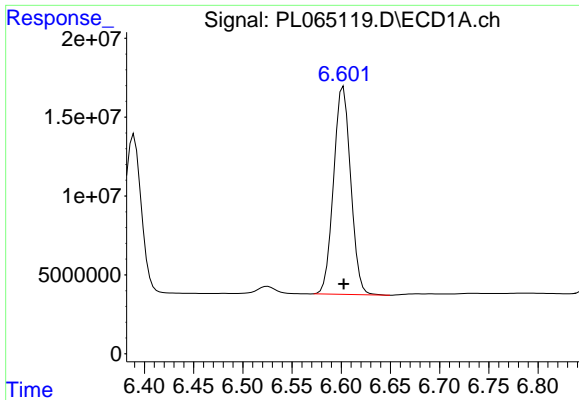
#17 4,4'-DDT
 R.T.: 7.272 min
 Delta R.T.: 0.000 min
 Response: 94314238
 Conc: 48.12 ng/ml



#18 Endrin aldehyde
 R.T.: 6.389 min
 Delta R.T.: 0.000 min
 Response: 122504218
 Conc: 47.78 ng/ml

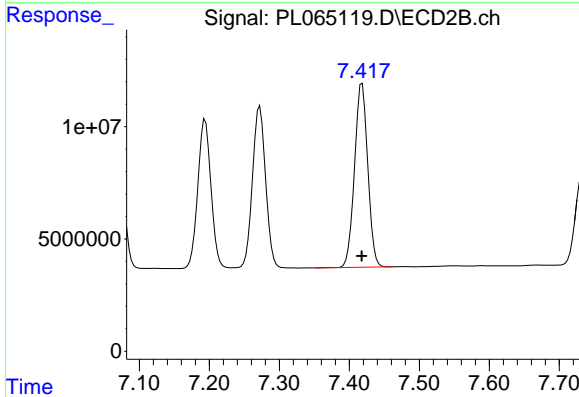


#18 Endrin aldehyde
 R.T.: 7.194 min
 Delta R.T.: 0.000 min
 Response: 86966491
 Conc: 49.16 ng/ml

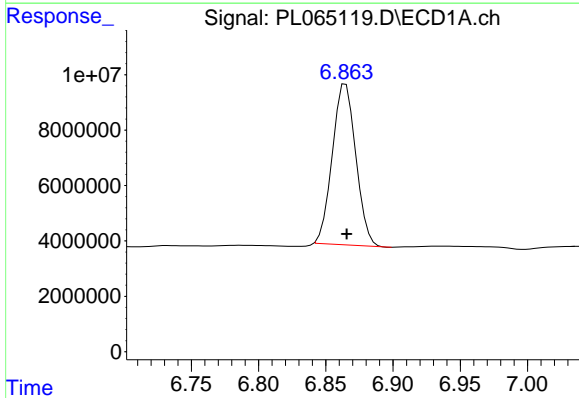


#19 Endosulfan Sulfate
 R.T.: 6.602 min
 Delta R.T.: 0.000 min
 Response: 159533505
 Conc: 47.20 ng/ml

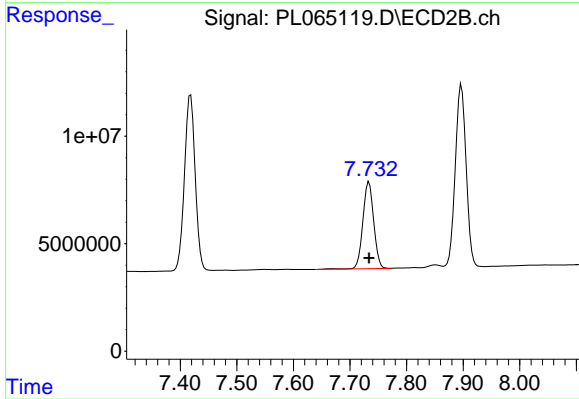
Instrument :
 ECD_L
 ClientSampled :



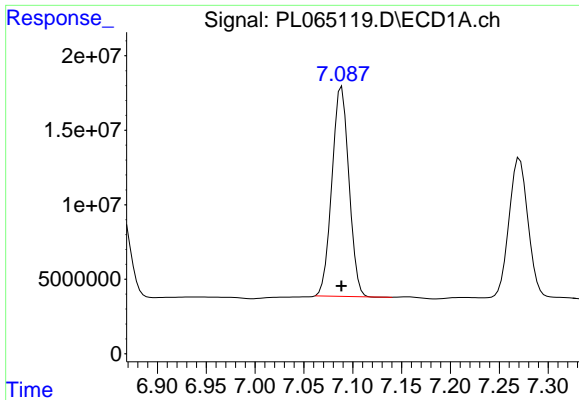
#19 Endosulfan Sulfate
 R.T.: 7.418 min
 Delta R.T.: 0.000 min
 Response: 107397748
 Conc: 49.32 ng/ml



#20 Methoxychlor
 R.T.: 6.865 min
 Delta R.T.: 0.000 min
 Response: 70167576
 Conc: 44.45 ng/ml



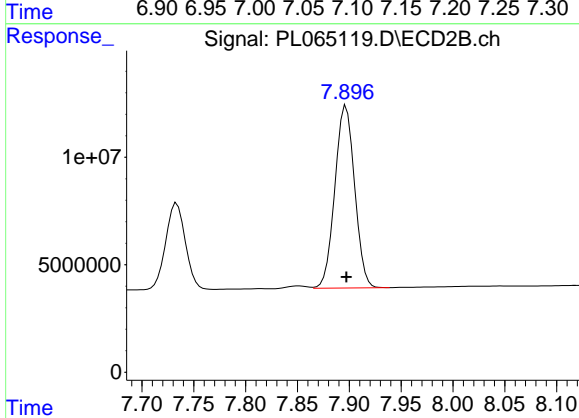
#20 Methoxychlor
 R.T.: 7.734 min
 Delta R.T.: 0.000 min
 Response: 53641750
 Conc: 48.40 ng/ml



#21 Endrin ketone

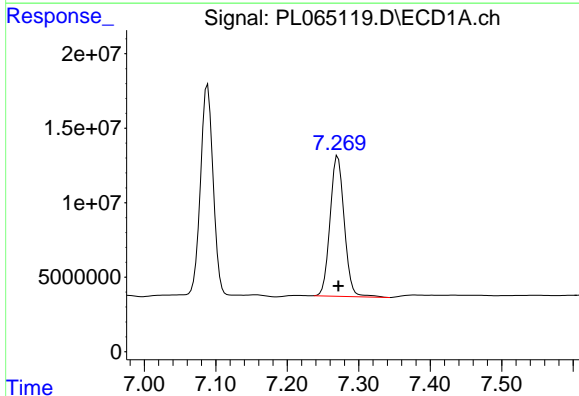
R.T.: 7.089 min
 Delta R.T.: 0.000 min
 Response: 170624719
 Conc: 49.44 ng/ml

Instrument :
 ECD_L
 ClientSampled :



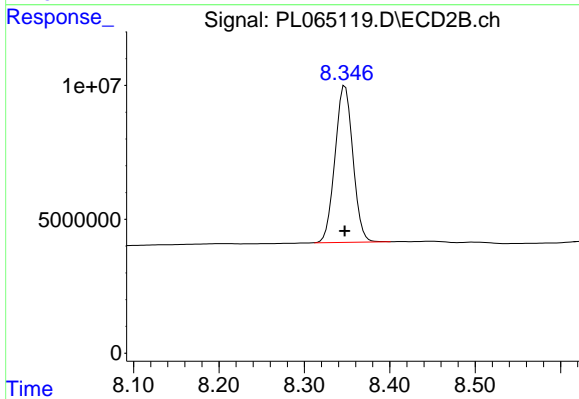
#21 Endrin ketone

R.T.: 7.897 min
 Delta R.T.: 0.000 min
 Response: 112634033
 Conc: 52.69 ng/ml



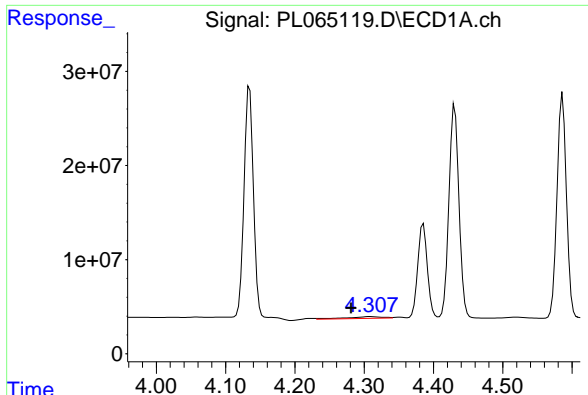
#22 Mirex

R.T.: 7.271 min
 Delta R.T.: 0.000 min
 Response: 130167650
 Conc: 48.55 ng/ml



#22 Mirex

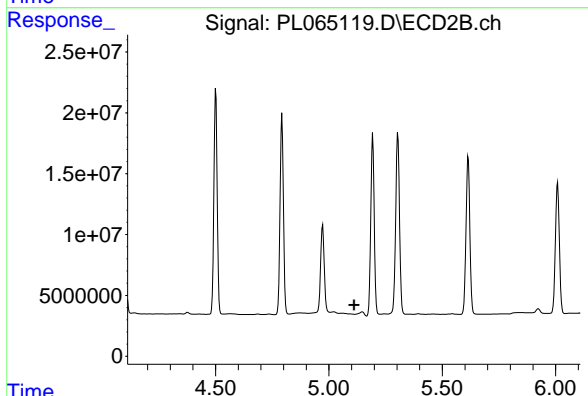
R.T.: 8.348 min
 Delta R.T.: 0.000 min
 Response: 85080962
 Conc: 50.30 ng/ml



#23 Chlordane-1

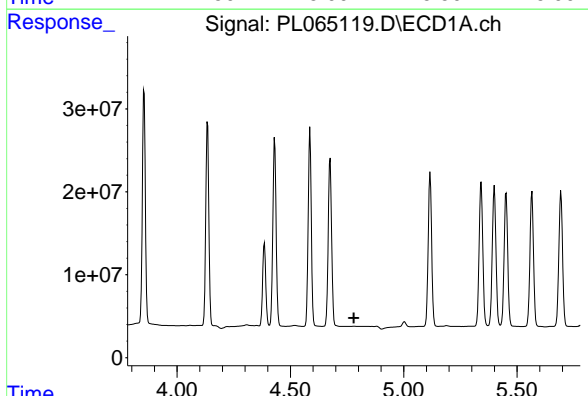
R.T.: 4.308 min
 Delta R.T.: 0.027 min
 Response: 6677636
 Conc: 52.39 ng/ml

Instrument :
 ECD_L
 ClientSampled :



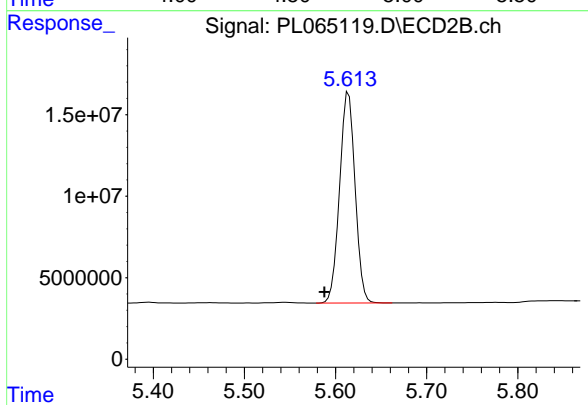
#23 Chlordane-1

R.T.: 0.000 min
 Exp R.T. : 5.112 min
 Response: 0
 Conc: N.D.



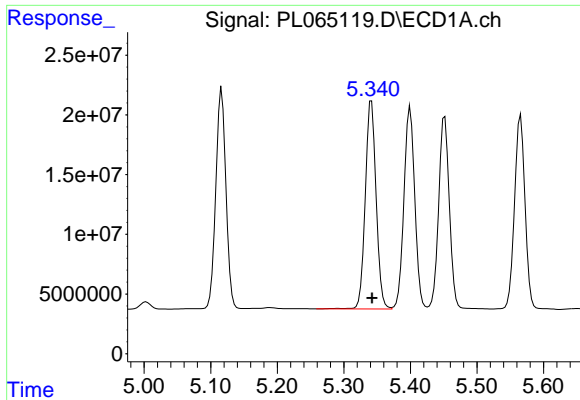
#24 Chlordane-2

R.T.: 0.000 min
 Exp R.T. : 4.779 min
 Response: 0
 Conc: N.D.



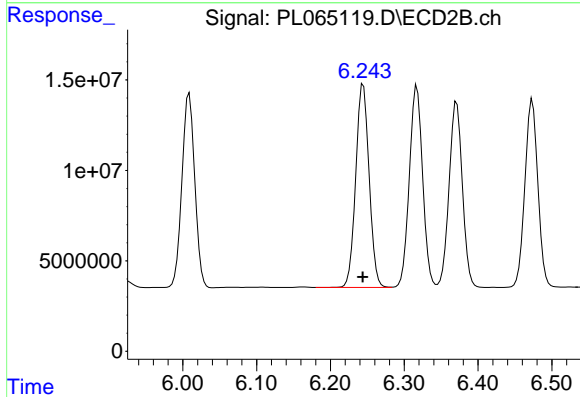
#24 Chlordane-2

R.T.: 5.614 min
 Delta R.T.: 0.027 min
 Response: 152937032
 Conc: 1377.20 ng/ml

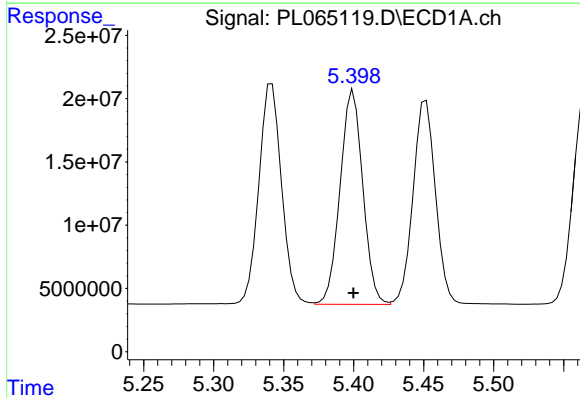


#25 Chlordane-3
 R.T.: 5.342 min
 Delta R.T.: 0.000 min
 Response: 197338347
 Conc: 494.67 ng/ml

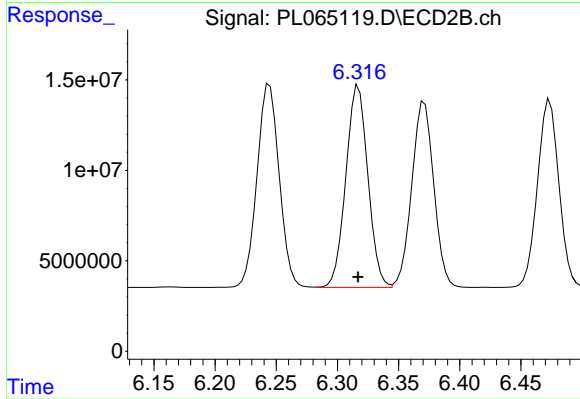
Instrument :
 ECD_L
 ClientSampled :



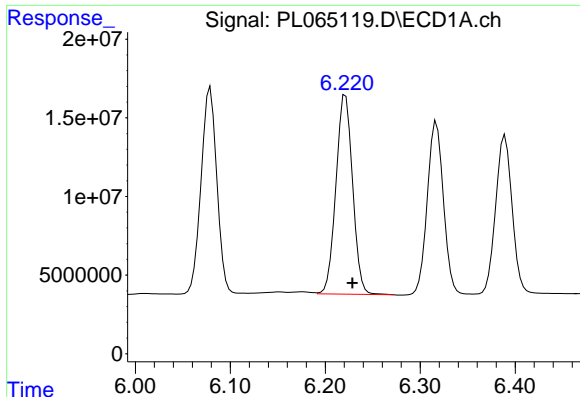
#25 Chlordane-3
 R.T.: 6.245 min
 Delta R.T.: 0.000 min
 Response: 141924906
 Conc: 353.34 ng/ml



#26 Chlordane-4
 R.T.: 5.400 min
 Delta R.T.: 0.000 min
 Response: 191174753
 Conc: 569.88 ng/ml



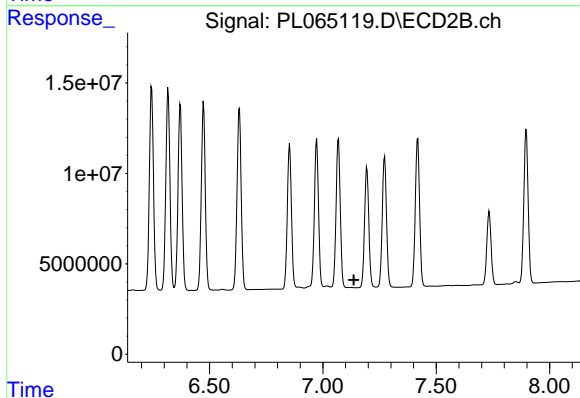
#26 Chlordane-4
 R.T.: 6.317 min
 Delta R.T.: 0.000 min
 Response: 139917040
 Conc: 286.58 ng/ml



#27 Chlordane-5

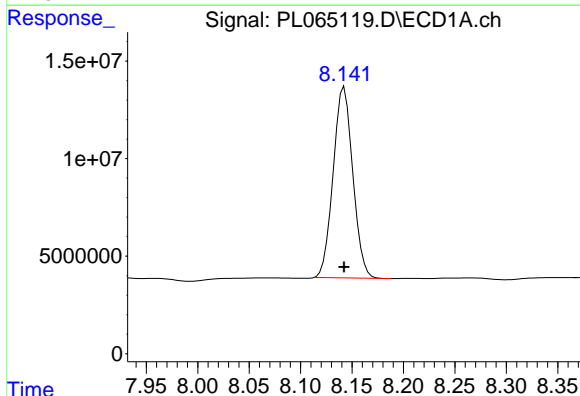
R.T.: 6.221 min
 Delta R.T.: -0.007 min
 Response: 154571653
 Conc: 1190.38 ng/ml

Instrument :
 ECD_L
 ClientSampled :



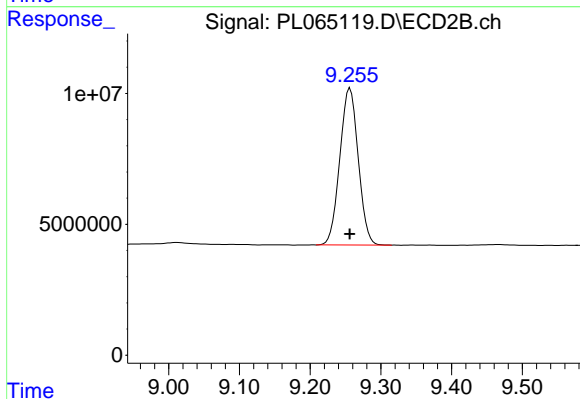
#27 Chlordane-5

R.T.: 0.000 min
 Exp R.T. : 7.137 min
 Response: 0
 Conc: N.D.



#28 Decachlorobiphenyl

R.T.: 8.142 min
 Delta R.T.: 0.000 min
 Response: 129584679
 Conc: 46.70 ng/ml



#28 Decachlorobiphenyl

R.T.: 9.256 min
 Delta R.T.: 0.000 min
 Response: 108321262
 Conc: 49.31 ng/ml