

Data Path : Z:\pestpcbsrv\HPCHEM1\ECD\_L\Data\PL030621\  
 Data File : PL065103.D  
 Signal(s) : Signal #1: ECD1A.ch Signal #2: ECD2B.ch  
 Acq On : 05 Mar 2021 15:19  
 Operator : AR\AJ  
 Sample : PB134993BL  
 Misc :  
 ALS Vial : 19 Sample Multiplier: 1

Instrument :  
 ECD\_L  
 ClientSampleId :  
 PB134993BL

Integration File signal 1: autoint1.e  
 Integration File signal 2: autoint2.e  
 Quant Time: Mar 05 22:13:00 2021  
 Quant Method : Z:\pestpcbsrv\HPCHEM1\ECD\_L\methods\PL030521.M  
 Quant Title : GC Extractables  
 QLast Update : Fri Mar 05 02:26:14 2021  
 Response via : Initial Calibration  
 Integrator: ChemStation

Volume Inj. : 1 µl  
 Signal #1 Phase : ZB-MR2 Signal #2 Phase: ZB-MR1  
 Signal #1 Info : 30M x 0.32mm x0.2 Signal #2 Info : 30M x 0.32mm x0.5µm

Compound	RT#1	RT#2	Resp#1	Resp#2	ng/ml	ng/ml
-----						
System Monitoring Compounds						
1) SA Tetrachlo...	3.430	4.099	61209171	49277356	20.816	19.844
28) SA Decachlor...	8.156	9.262	52887783	43305606	19.058	19.716

Target Compounds

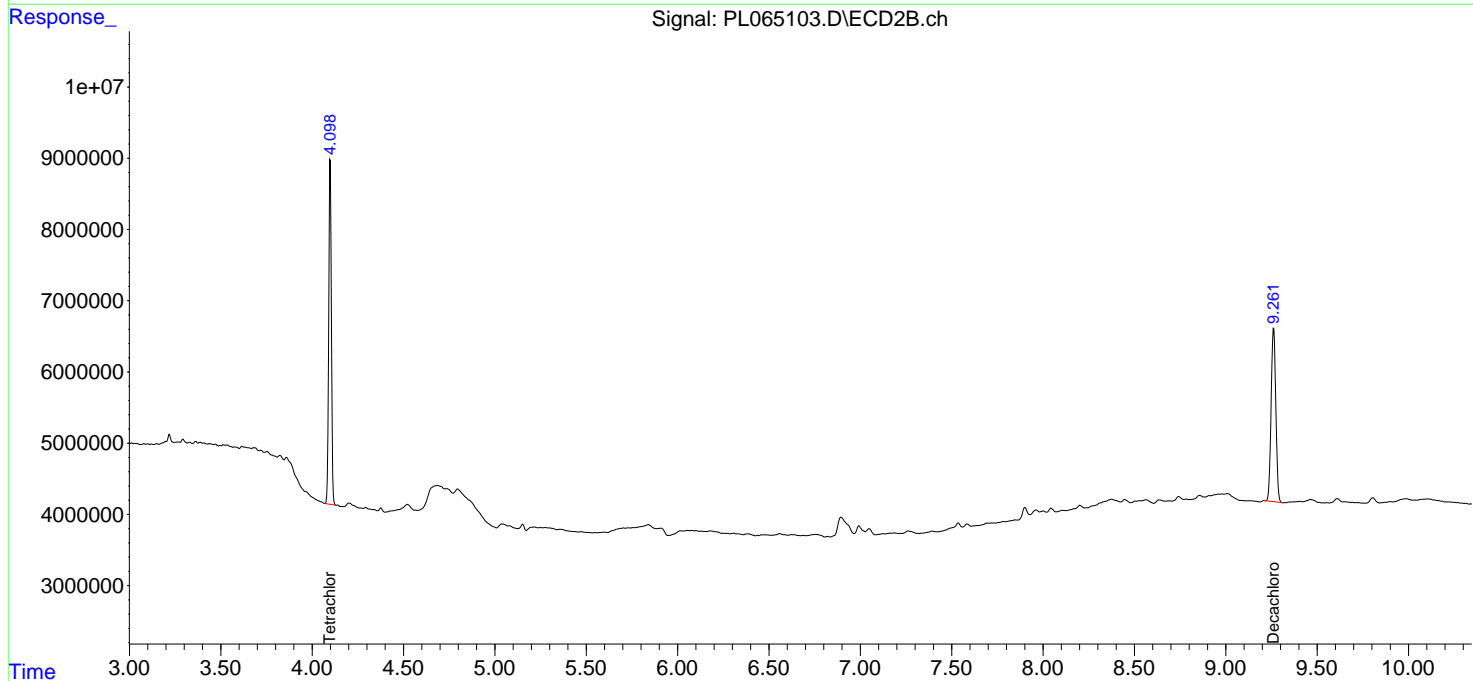
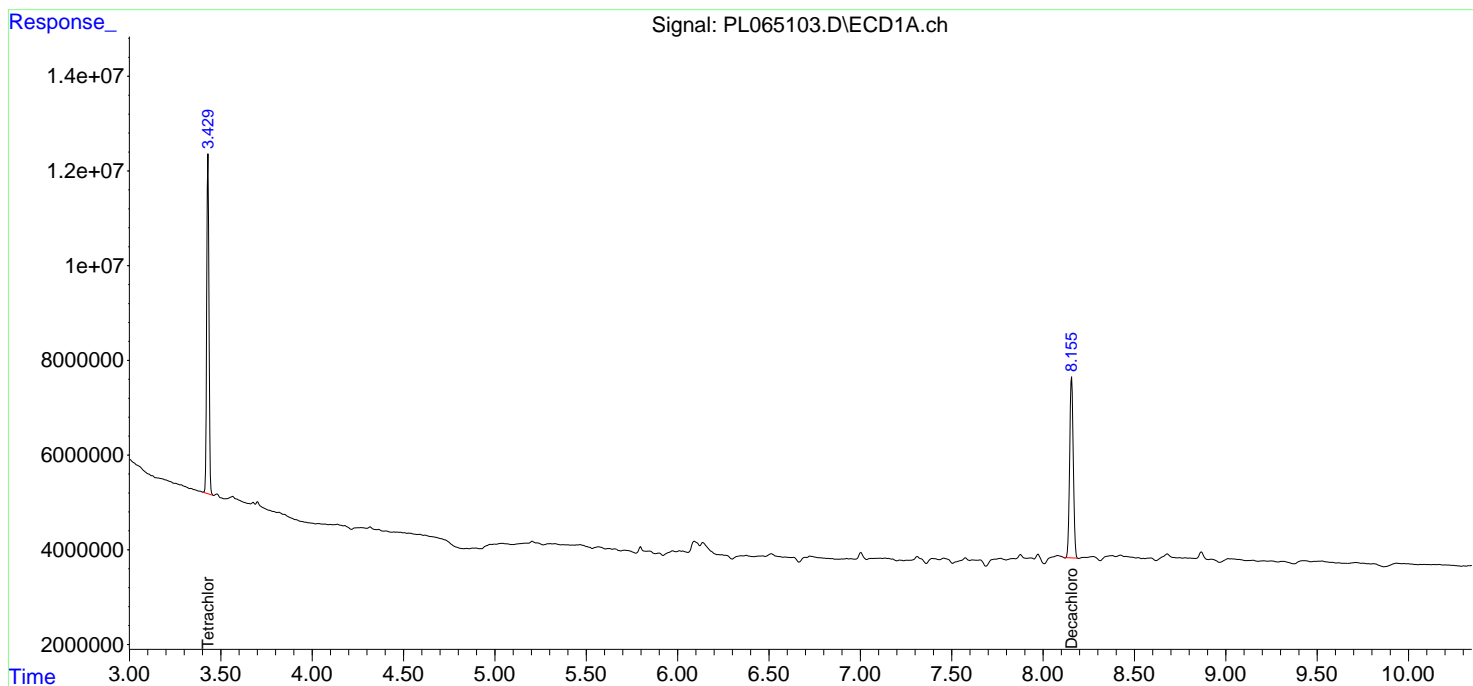
(f)=RT Delta > 1/2 Window (#)=Amounts differ by > 25% (m)=manual int.

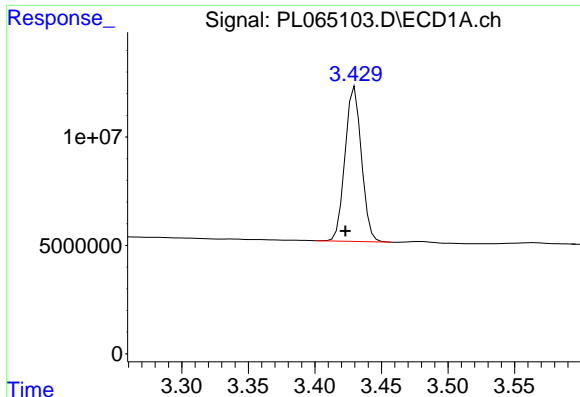
Data Path : Z:\pestpcbsrv\HPCHEM1\ECD\_L\Data\PL030621\  
 Data File : PL065103.D  
 Signal(s) : Signal #1: ECD1A.ch Signal #2: ECD2B.ch  
 Acq On : 05 Mar 2021 15:19  
 Operator : AR\AJ  
 Sample : PB134993BL  
 Misc :  
 ALS Vial : 19 Sample Multiplier: 1

Instrument :  
 ECD\_L  
 ClientSampled :  
 PB134993BL

Integration File signal 1: autoint1.e  
 Integration File signal 2: autoint2.e  
 Quant Time: Mar 05 22:13:00 2021  
 Quant Method : Z:\pestpcbsrv\HPCHEM1\ECD\_L\methods\PL030521.M  
 Quant Title : GC Extractables  
 QLast Update : Fri Mar 05 02:26:14 2021  
 Response via : Initial Calibration  
 Integrator: ChemStation

Volume Inj. : 1 µl  
 Signal #1 Phase : ZB-MR2 Signal #2 Phase: ZB-MR1  
 Signal #1 Info : 30M x 0.32mm x0.2 Signal #2 Info : 30M x 0.32mm x0.5µm

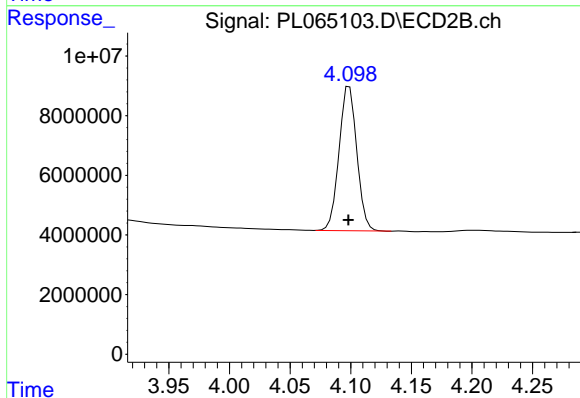




#1 Tetrachloro-m-xylene

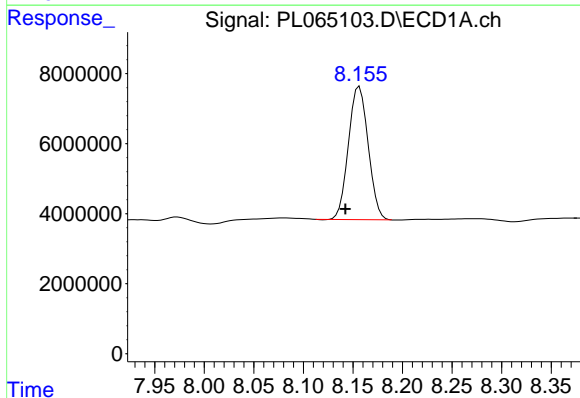
R.T.: 3.430 min  
 Delta R.T.: 0.007 min  
 Response: 61209171  
 Conc: 20.82 ng/ml

Instrument :  
 ECD\_L  
 ClientSampleId :  
 PB134993BL



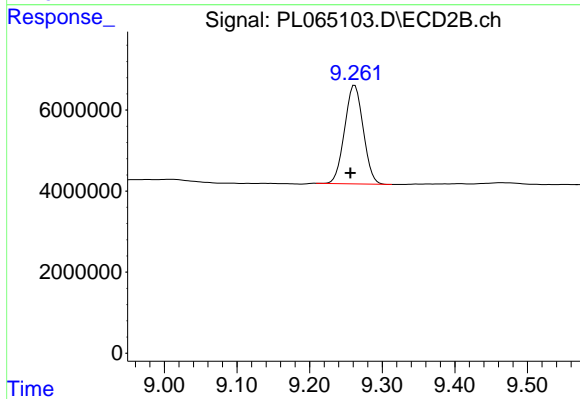
#1 Tetrachloro-m-xylene

R.T.: 4.099 min  
 Delta R.T.: 0.001 min  
 Response: 49277356  
 Conc: 19.84 ng/ml



#28 Decachlorobiphenyl

R.T.: 8.156 min  
 Delta R.T.: 0.014 min  
 Response: 52887783  
 Conc: 19.06 ng/ml



#28 Decachlorobiphenyl

R.T.: 9.262 min  
 Delta R.T.: 0.006 min  
 Response: 43305606  
 Conc: 19.72 ng/ml