

Data Path : Z:\pestpcbsrv\HPCHEM1\ECD\_L\Data\PL030621\  
 Data File : PL065120.D  
 Signal(s) : Signal #1: ECD1A.ch Signal #2: ECD2B.ch  
 Acq On : 05 Mar 2021 19:37  
 Operator : AR\AJ  
 Sample : PB135000BL  
 Misc :  
 ALS Vial : 33 Sample Multiplier: 1

Instrument :  
 ECD\_L  
 ClientSampleId :  
 PB135000BL

Integration File signal 1: autoint1.e  
 Integration File signal 2: autoint2.e  
 Quant Time: Mar 05 22:18:05 2021  
 Quant Method : Z:\pestpcbsrv\HPCHEM1\ECD\_L\methods\PL030521.M  
 Quant Title : GC Extractables  
 QLast Update : Fri Mar 05 02:26:14 2021  
 Response via : Initial Calibration  
 Integrator: ChemStation

Volume Inj. : 1 µl  
 Signal #1 Phase : ZB-MR2 Signal #2 Phase: ZB-MR1  
 Signal #1 Info : 30M x 0.32mm x0.2 Signal #2 Info : 30M x 0.32mm x0.5µm

| Compound                    | RT#1  | RT#2  | Resp#1   | Resp#2   | ng/ml  | ng/ml  |
|-----------------------------|-------|-------|----------|----------|--------|--------|
| -----                       |       |       |          |          |        |        |
| System Monitoring Compounds |       |       |          |          |        |        |
| 1) SA Tetrachlo...          | 3.422 | 4.098 | 62398044 | 50925372 | 21.221 | 20.508 |
| 28) SA Decachlor...         | 8.143 | 9.256 | 55330787 | 44639465 | 19.938 | 20.323 |

Target Compounds

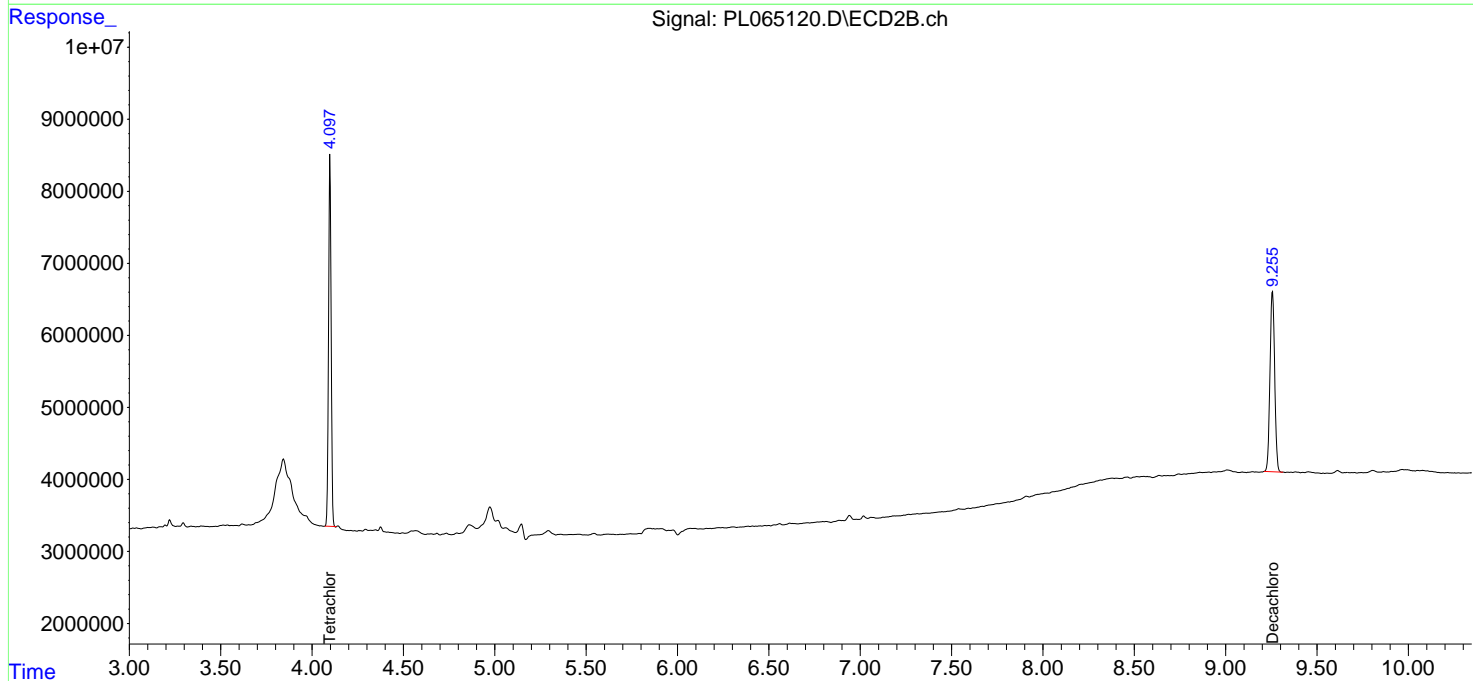
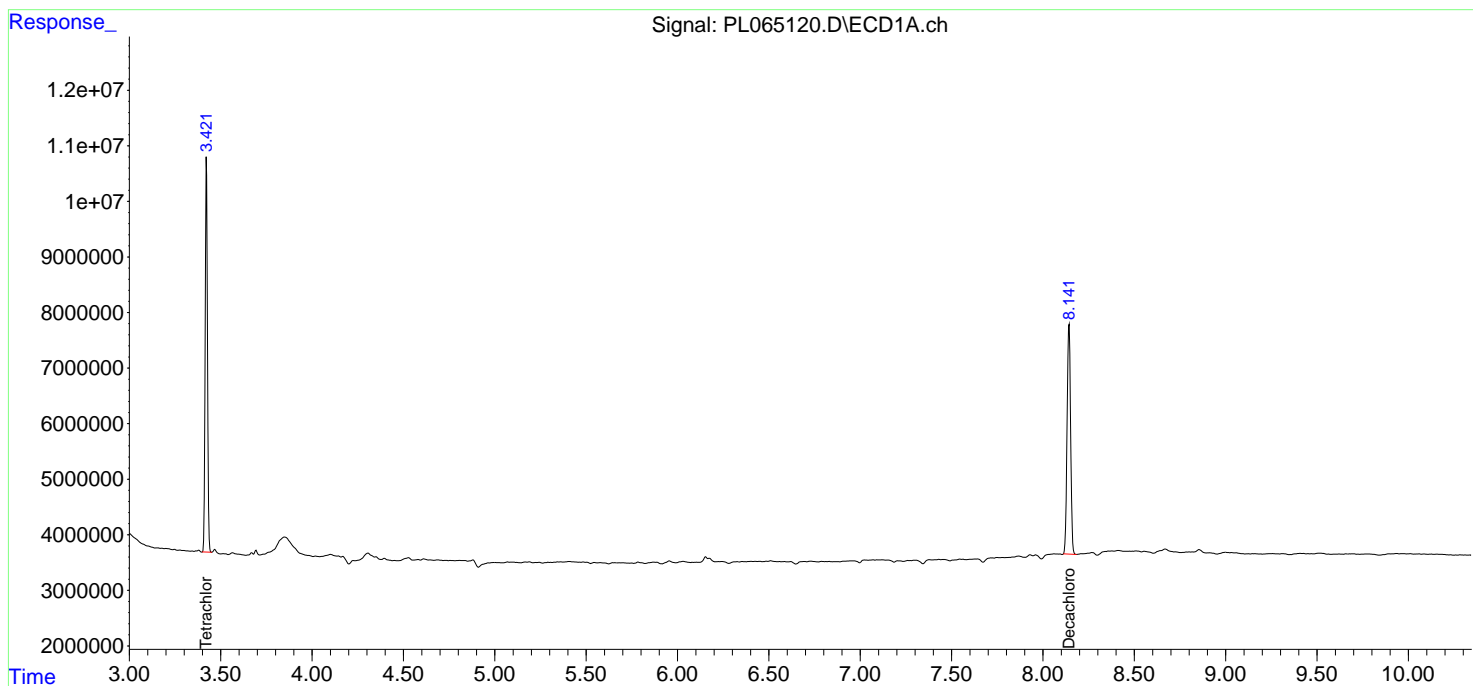
(f)=RT Delta > 1/2 Window (#)=Amounts differ by > 25% (m)=manual int.

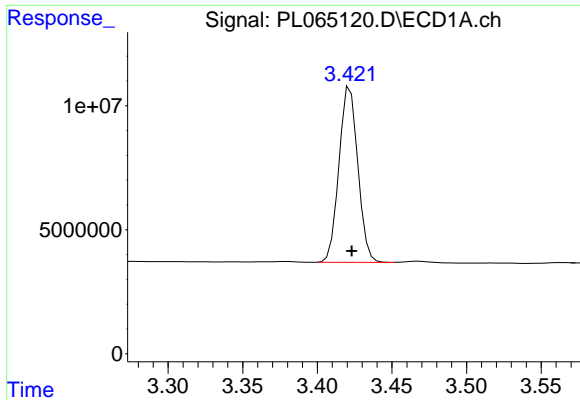
Data Path : Z:\pestpcbsrv\HPCHEM1\ECD\_L\Data\PL030621\  
 Data File : PL065120.D  
 Signal(s) : Signal #1: ECD1A.ch Signal #2: ECD2B.ch  
 Acq On : 05 Mar 2021 19:37  
 Operator : AR\AJ  
 Sample : PB135000BL  
 Misc :  
 ALS Vial : 33 Sample Multiplier: 1

Instrument :  
 ECD\_L  
 ClientSampled :  
 PB135000BL

Integration File signal 1: autoint1.e  
 Integration File signal 2: autoint2.e  
 Quant Time: Mar 05 22:18:05 2021  
 Quant Method : Z:\pestpcbsrv\HPCHEM1\ECD\_L\methods\PL030521.M  
 Quant Title : GC Extractables  
 QLast Update : Fri Mar 05 02:26:14 2021  
 Response via : Initial Calibration  
 Integrator: ChemStation

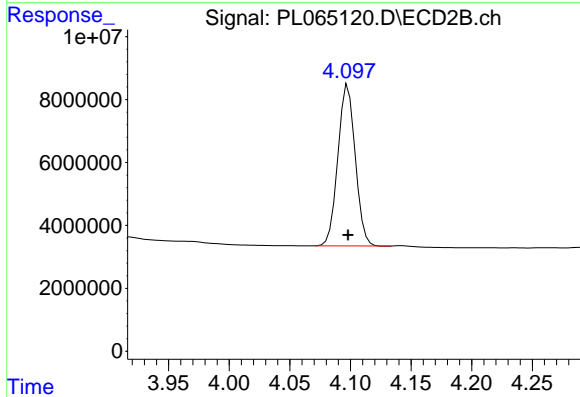
Volume Inj. : 1 µl  
 Signal #1 Phase : ZB-MR2 Signal #2 Phase: ZB-MR1  
 Signal #1 Info : 30M x 0.32mm x0.2 Signal #2 Info : 30M x 0.32mm x0.5µm



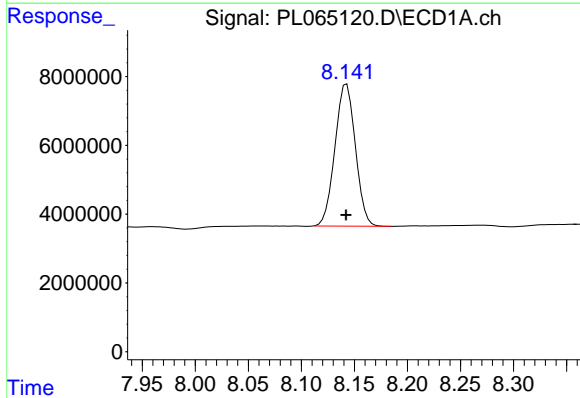


#1 Tetrachloro-m-xylene  
 R.T.: 3.422 min  
 Delta R.T.: 0.000 min  
 Response: 62398044  
 Conc: 21.22 ng/ml

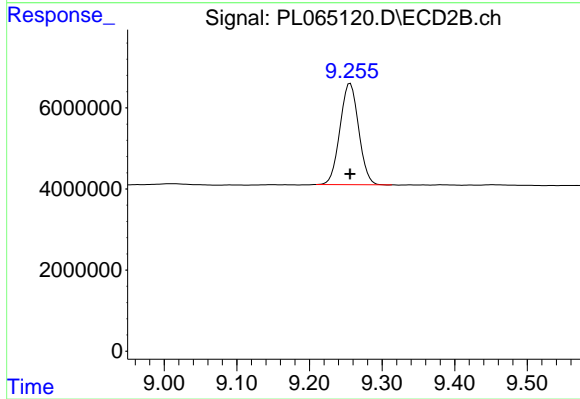
Instrument :  
 ECD\_L  
 ClientSampleId :  
 PB135000BL



#1 Tetrachloro-m-xylene  
 R.T.: 4.098 min  
 Delta R.T.: 0.000 min  
 Response: 50925372  
 Conc: 20.51 ng/ml



#28 Decachlorobiphenyl  
 R.T.: 8.143 min  
 Delta R.T.: 0.000 min  
 Response: 55330787  
 Conc: 19.94 ng/ml



#28 Decachlorobiphenyl  
 R.T.: 9.256 min  
 Delta R.T.: 0.000 min  
 Response: 44639465  
 Conc: 20.32 ng/ml