

Data Path : Z:\pestpcbsrv\HPCHEM1\ECD_L\Data\PL030719\
 Data File : PL045580.D
 Signal(s) : Signal #1: ECD1A.ch Signal #2: ECD2B.ch
 Acq On : 07 Mar 2019 18:01
 Operator : AJ\SJ
 Sample : K1757-03
 Misc :
 ALS Vial : 24 Sample Multiplier: 1

Instrument :
 ECD_L
 ClientSampleId :
 TP-6CD-S

Integration File signal 1: autoint1.e
 Integration File signal 2: autoint2.e
 Quant Time: Mar 08 03:42:48 2019
 Quant Method : Z:\pestpcbsrv\HPCHEM1\ECD_L\methods\PL022719.M
 Quant Title : GC Extractables
 QLast Update : Wed Feb 27 17:00:03 2019
 Response via : Initial Calibration
 Integrator: ChemStation

Volume Inj. : 1 µl
 Signal #1 Phase : ZB-MR2 Signal #2 Phase: ZB-MR1
 Signal #1 Info : 30M x 0.32mm x0.2 Signal #2 Info : 30M x 0.32mm x0.5µm

Compound	RT#1	RT#2	Resp#1	Resp#2	ng/ml	ng/ml

System Monitoring Compounds						
1) SA Tetrachlo...	3.362	3.981	44677529	15199048	6.495	7.097
28) SA Decachlor...	8.044	9.037	52505146	15227797	6.275	6.664
Target Compounds						
2) A alpha-BHC	0.000	4.396f	0	1271168	N.D.	0.418 #
10) B gamma-Chl...	5.261	6.059f	107.5E6	26523800	10.981	9.886
12) B 4,4'-DDE	5.482	6.317	107.5E6	37235533	12.245	15.941 #
13) MA Dieldrin	5.630f	0.000	13691648	0	1.432	N.D. #
14) MA Endrin	0.000	6.678	0	2234684	N.D.	0.982 #
16) A 4,4'-DDD	5.993	6.806	50370882	16351484	6.880	8.503
17) MA 4,4'-DDT	6.226	7.105	9172206	2245370	1.223	1.138
25) Chlordane-3	5.261	6.059f	107.5E6	26523800	93.697	68.074 #

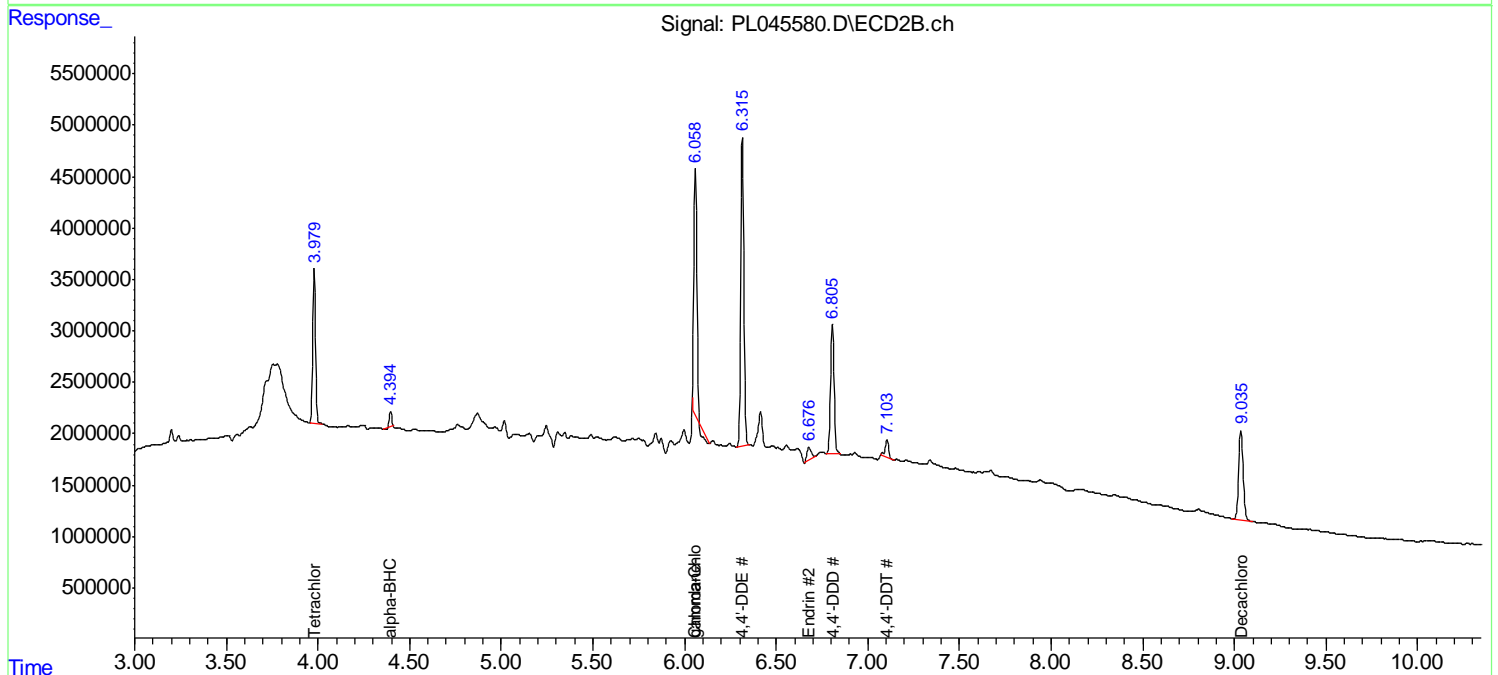
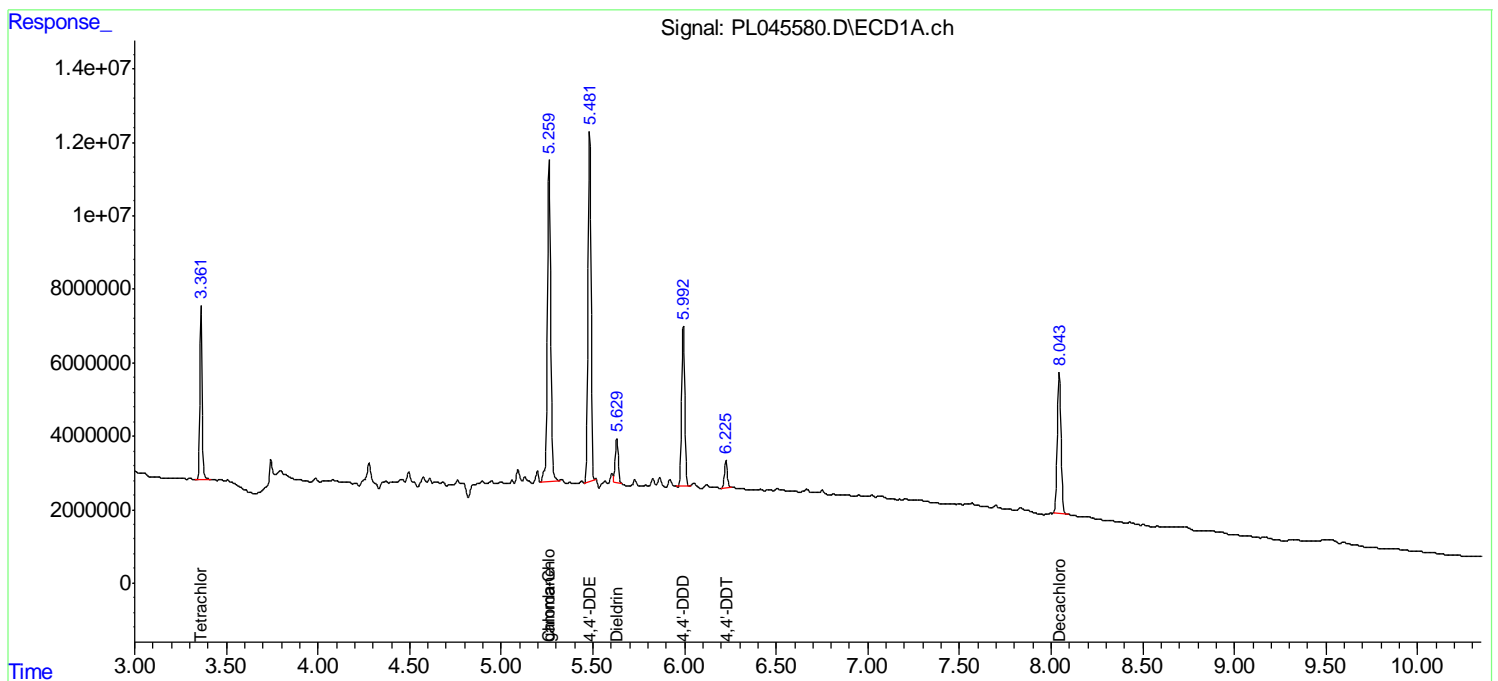
(f)=RT Delta > 1/2 Window (#)=Amounts differ by > 25% (m)=manual int.

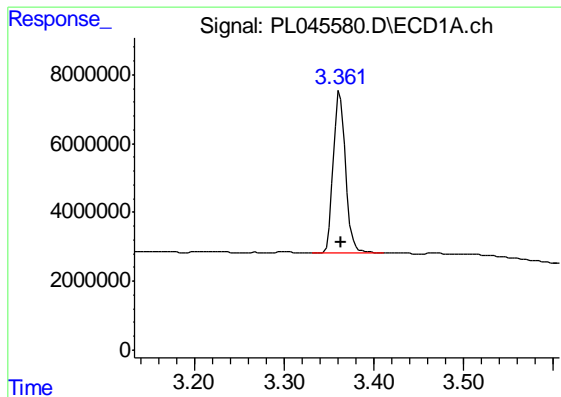
Data Path : Z:\pestpcbsrv\HPCHEM1\ECD_L\Data\PL030719\
 Data File : PL045580.D
 Signal(s) : Signal #1: ECD1A.ch Signal #2: ECD2B.ch
 Acq On : 07 Mar 2019 18:01
 Operator : AJ\SJ
 Sample : K1757-03
 Misc :
 ALS Vial : 24 Sample Multiplier: 1

Instrument :
 ECD_L
 Client Sampled :
 TP-6CD-S

Integration File signal 1: autoint1.e
 Integration File signal 2: autoint2.e
 Quant Time: Mar 08 03:42:48 2019
 Quant Method : Z:\pestpcbsrv\HPCHEM1\ECD_L\methods\PL022719.M
 Quant Title : GC Extractables
 QLast Update : Wed Feb 27 17:00:03 2019
 Response via : Initial Calibration
 Integrator: ChemStation

Volume Inj. : 1 µl
 Signal #1 Phase : ZB-MR2 Signal #2 Phase: ZB-MR1
 Signal #1 Info : 30M x 0.32mm x0.2 Signal #2 Info : 30M x 0.32mm x0.5µm

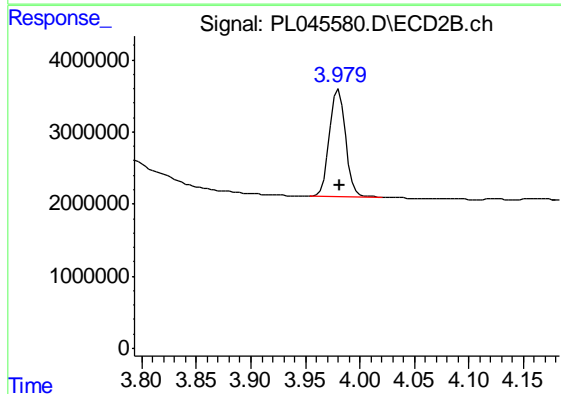




#1 Tetrachloro-m-xylene

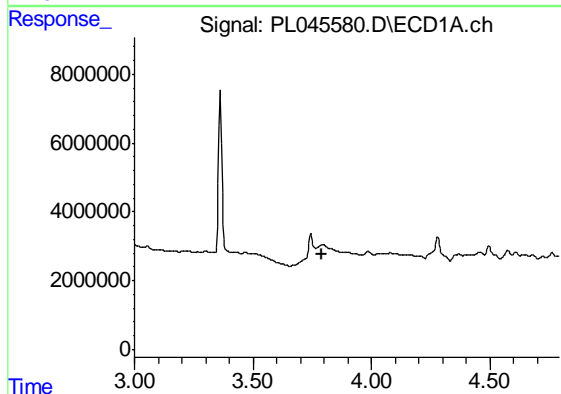
R.T.: 3.362 min
 Delta R.T.: 0.000 min
 Response: 44677529
 Conc: 6.49 ng/ml

Instrument :
 ECD_L
 ClientSampleId :
 TP-6CD-S



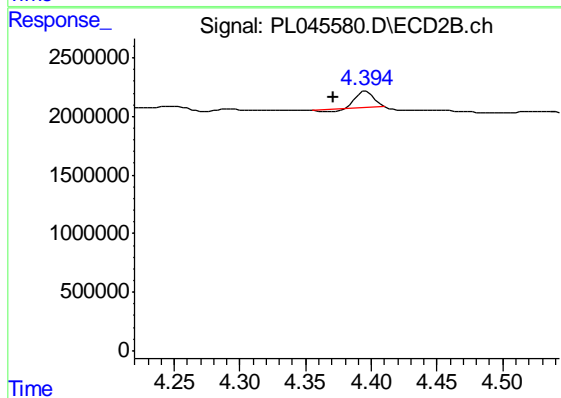
#1 Tetrachloro-m-xylene

R.T.: 3.981 min
 Delta R.T.: -0.001 min
 Response: 15199048
 Conc: 7.10 ng/ml



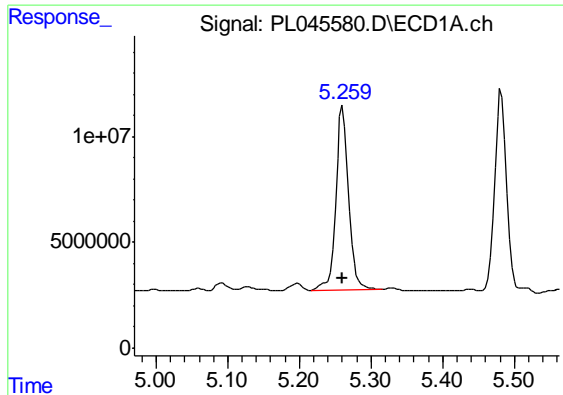
#2 alpha-BHC

R.T.: 0.000 min
 Exp R.T. : 3.794 min
 Response: 0
 Conc: N.D.



#2 alpha-BHC

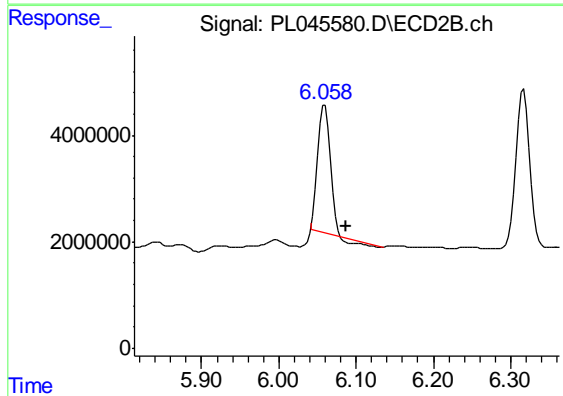
R.T.: 4.396 min
 Delta R.T.: 0.024 min
 Response: 1271168
 Conc: 0.42 ng/ml



#10 gamma-Chlordane

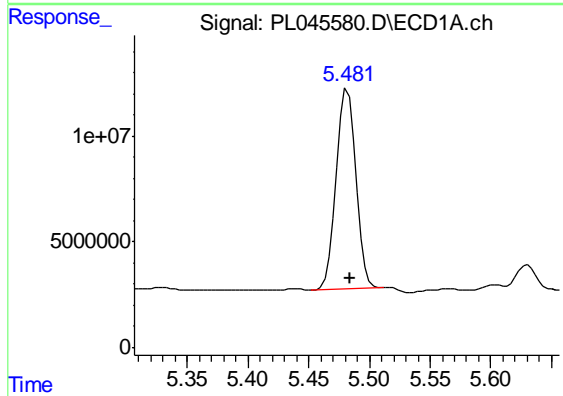
R.T.: 5.261 min
 Delta R.T.: 0.000 min
 Response: 107472916
 Conc: 10.98 ng/ml

Instrument :
 ECD_L
 ClientSampleId :
 TP-6CD-S



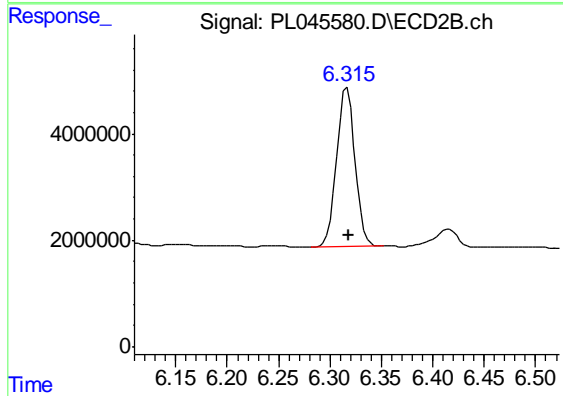
#10 gamma-Chlordane

R.T.: 6.059 min
 Delta R.T.: -0.028 min
 Response: 26523800
 Conc: 9.89 ng/ml



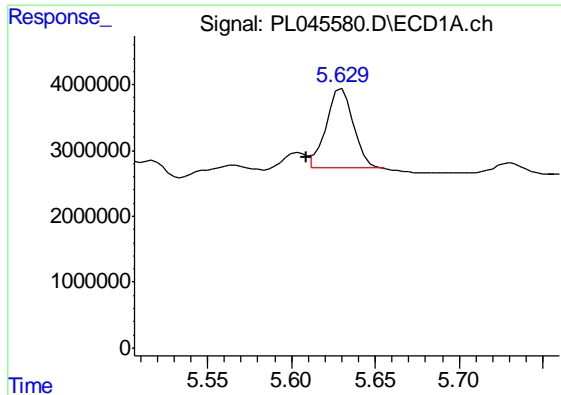
#12 4,4'-DDE

R.T.: 5.482 min
 Delta R.T.: -0.002 min
 Response: 107492566
 Conc: 12.25 ng/ml



#12 4,4'-DDE

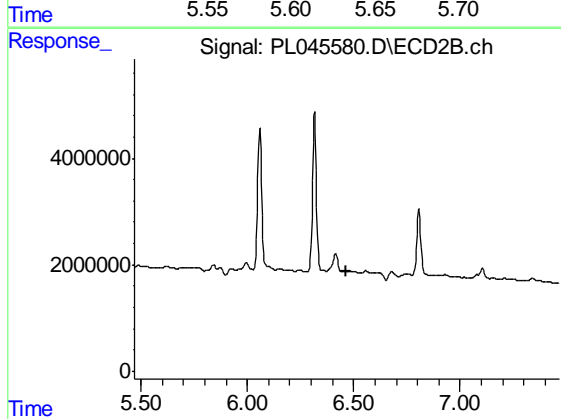
R.T.: 6.317 min
 Delta R.T.: -0.001 min
 Response: 37235533
 Conc: 15.94 ng/ml



#13 Dieldrin

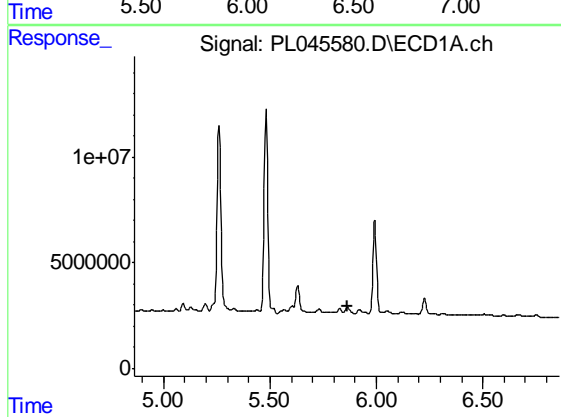
R.T.: 5.630 min
 Delta R.T.: 0.021 min
 Response: 13691648
 Conc: 1.43 ng/ml

Instrument :
 ECD_L
 ClientSampled :
 TP-6CD-S



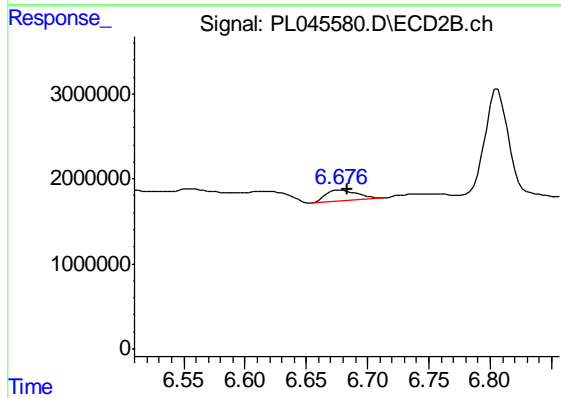
#13 Dieldrin

R.T.: 0.000 min
 Exp R.T. : 6.467 min
 Response: 0
 Conc: N.D.



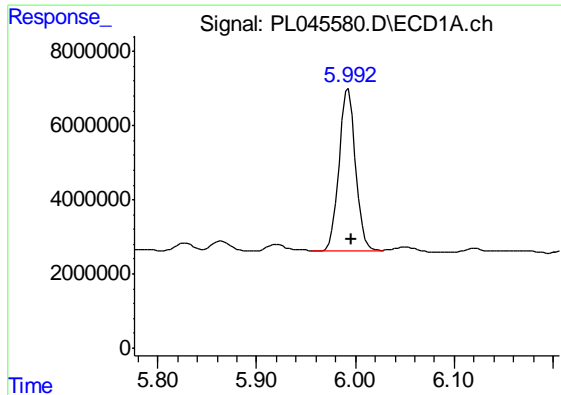
#14 Endrin

R.T.: 0.000 min
 Exp R.T. : 5.862 min
 Response: 0
 Conc: N.D.



#14 Endrin

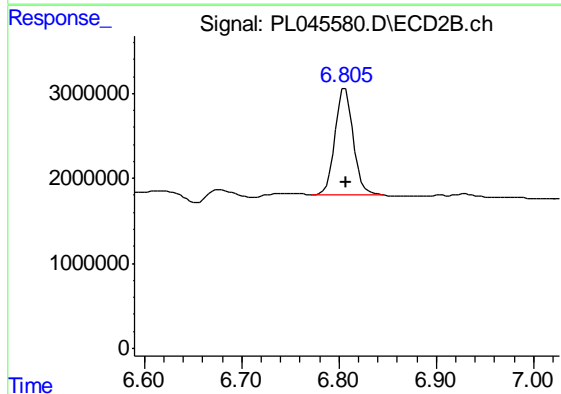
R.T.: 6.678 min
 Delta R.T.: -0.006 min
 Response: 2234684
 Conc: 0.98 ng/ml



#16 4,4'-DDD

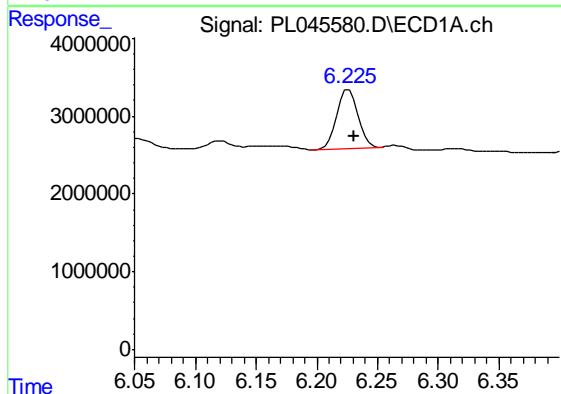
R.T.: 5.993 min
 Delta R.T.: -0.003 min
 Response: 50370882
 Conc: 6.88 ng/ml

Instrument :
 ECD_L
 ClientSampleId :
 TP-6CD-S



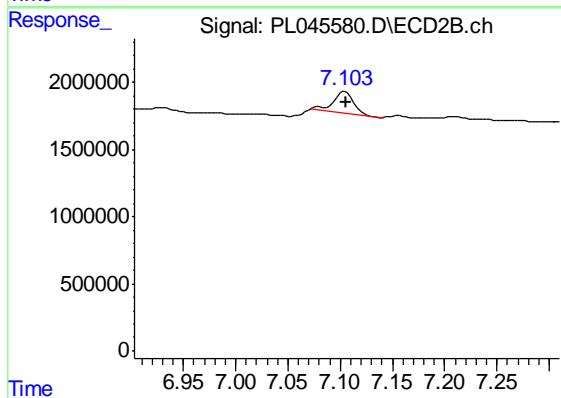
#16 4,4'-DDD

R.T.: 6.806 min
 Delta R.T.: -0.002 min
 Response: 16351484
 Conc: 8.50 ng/ml



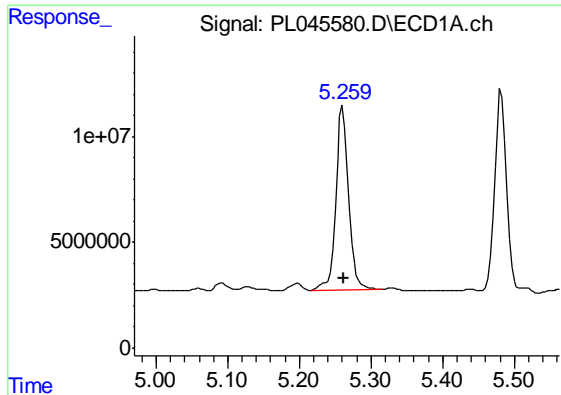
#17 4,4'-DDT

R.T.: 6.226 min
 Delta R.T.: -0.004 min
 Response: 9172206
 Conc: 1.22 ng/ml



#17 4,4'-DDT

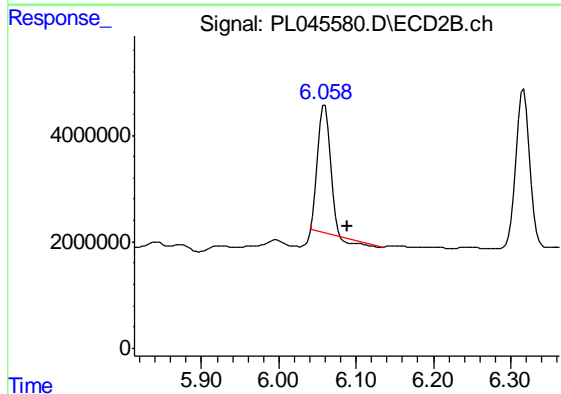
R.T.: 7.105 min
 Delta R.T.: -0.001 min
 Response: 2245370
 Conc: 1.14 ng/ml



#25 Chlordane-3

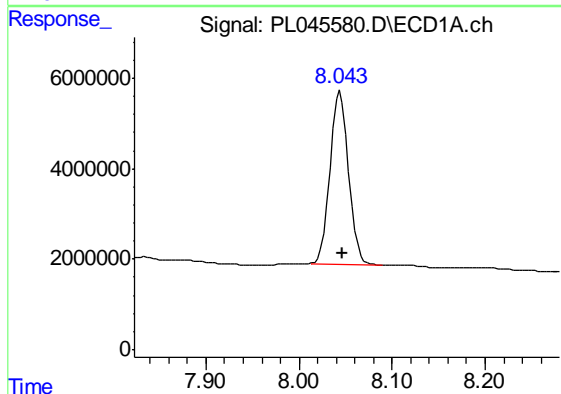
R.T.: 5.261 min
 Delta R.T.: -0.001 min
 Response: 107472916
 Conc: 93.70 ng/ml

Instrument :
 ECD_L
 ClientSampleId :
 TP-6CD-S



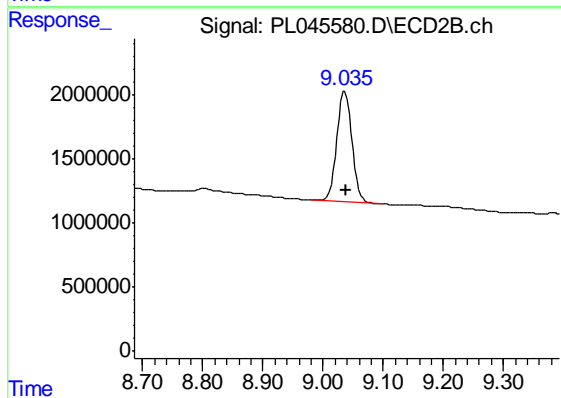
#25 Chlordane-3

R.T.: 6.059 min
 Delta R.T.: -0.029 min
 Response: 26523800
 Conc: 68.07 ng/ml



#28 Decachlorobiphenyl

R.T.: 8.044 min
 Delta R.T.: -0.003 min
 Response: 52505146
 Conc: 6.27 ng/ml



#28 Decachlorobiphenyl

R.T.: 9.037 min
 Delta R.T.: -0.002 min
 Response: 15227797
 Conc: 6.66 ng/ml