

Data Path : Z:\pestpcbsrv\HPCHEM1\ECD_L\Data\PL030722\
 Data File : PL073176.D
 Signal(s) : Signal #1: ECD1A.ch Signal #2: ECD2B.ch
 Acq On : 07 Mar 2022 14:21
 Operator : AR\AJ
 Sample : N1733-10
 Misc :
 ALS Vial : 13 Sample Multiplier: 1

Instrument :
 ECD_L
 ClientSampleId :

Integration File signal 1: autoint1.e
 Integration File signal 2: autoint2.e
 Quant Time: Mar 08 04:49:51 2022
 Quant Method : Z:\pestpcbsrv\HPCHEM1\ECD_L\methods\PL022522CLP.M
 Quant Title : GC Extractables
 QLast Update : Tue Mar 01 01:47:07 2022
 Response via : Initial Calibration
 Integrator: ChemStation

Volume Inj. : 1 µl
 Signal #1 Phase : ZB-MR2 Signal #2 Phase: ZB-MR1
 Signal #1 Info : 30M x 0.32mm x0.2 Signal #2 Info : 30M x 0.32mm x 0.50µm

Compound	RT#1	RT#2	Resp#1	Resp#2	ng/ml	ng/ml

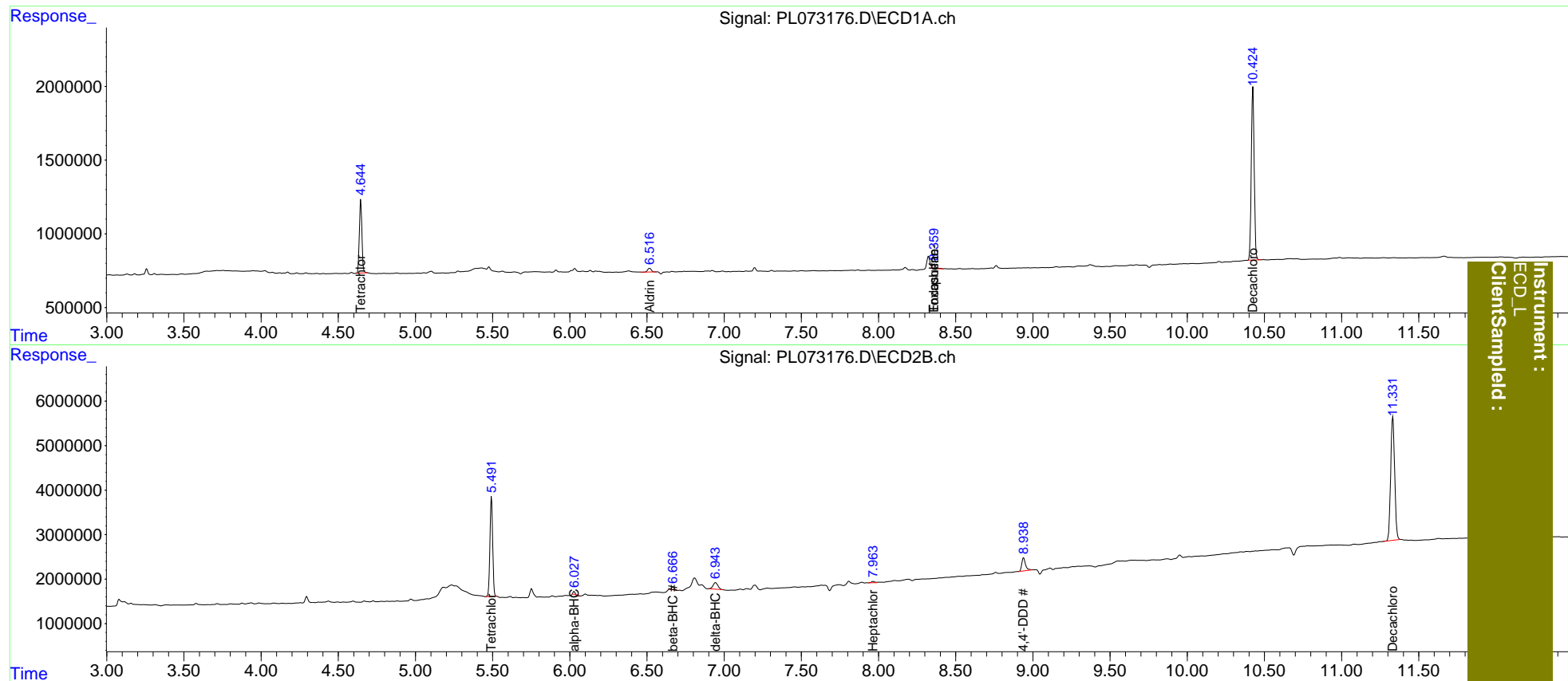
System Monitoring Compounds						
1) SA Tetrachlo...	4.646	5.493	5726814	27467357	16.653	17.594
27) SA Decachlor...	10.426	11.332	15453801	49800160	32.141	30.811
Target Compounds						
2) A alpha-BHC	0.000	6.028	0	448299	N.D.	0.232
3) MA gamma-BHC...	0.000	6.394f	0	56322	N.D.	<MDL
5) MB Aldrin	6.518	0.000	406823	0	0.899	N.D. #
6) B beta-BHC	0.000	6.668	0	870613	N.D.	0.890
7) B delta-BHC	0.000	6.944	0	3228044	N.D.	1.669
8) B Heptachlo...	0.000	7.965f	0	499374	N.D.	0.293
15) B Endosulfa...	8.360	0.000	478221	0	1.021	N.D. #
16) A 4,4'-DDD	0.000	8.940f	0	4980933	N.D.	3.793
24) Toxaphene-3	8.360f	0.000	478221	0	59.101	N.D. #

(f)=RT Delta > 1/2 Window (#)=Amounts differ by > 25% (m)=manual int.

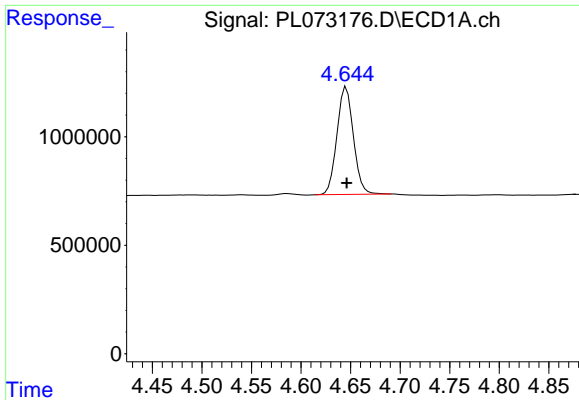
Data Path : Z:\pestpcbsrv\HPCHEM1\ECD_L\Data\PL073176.D
 Data File : PL073176.D
 Signal(s) : Signal #1: ECD1A.ch Signal #2: ECD2B.ch
 Acq On : 07 Mar 2022 14:21
 Operator : AR\AJ
 Sample : N1733-10
 Misc :
 ALS Vial : 13 Sample Multiplier: 1

Integration File signal 1: autoint1.e
 Integration File signal 2: autoint2.e
 Quant Time: Mar 08 04:49:51 2022
 Quant Method : Z:\pestpcbsrv\HPCHEM1\ECD_L\methods\PL022522CLP.M
 Quant Title : GC Extractables
 QLast Update : Tue Mar 01 01:47:07 2022
 Response via : Initial Calibration
 Integrator: ChemStation

Volume Inj. : 1 µl
 Signal #1 Phase : ZB-MR2 Signal #2 Phase: ZB-MR1
 Signal #1 Info : 30M x 0.32mm x0.2 Signal #2 Info : 30M x 0.32mm x 0.50µm

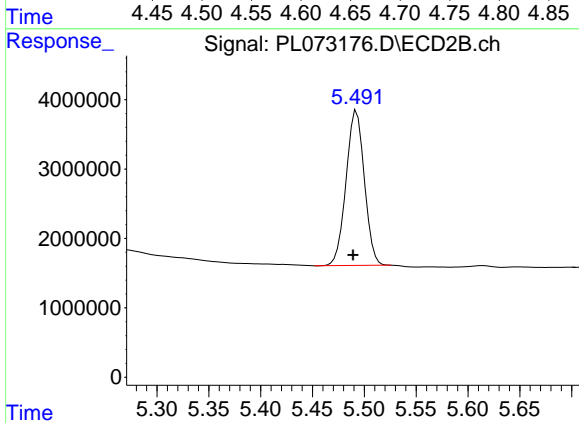


Instrument : ECD_L
 Client/Sample :

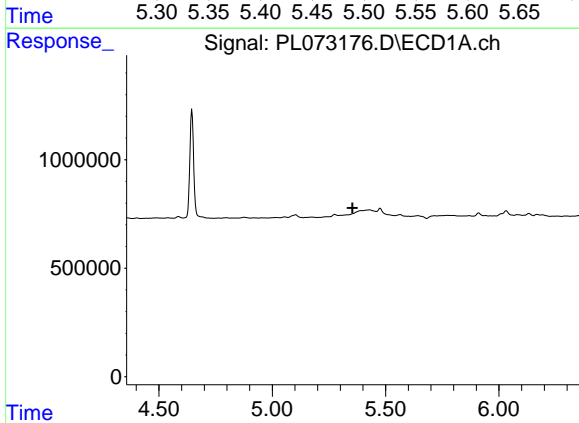


#1 Tetrachloro-m-xylene
 R.T.: 4.646 min
 Delta R.T.: 0.000 min
 Response: 5726814
 Conc: 16.65 ng/ml

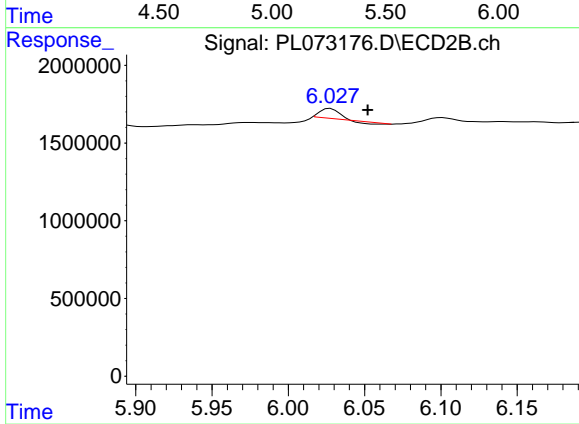
Instrument :
 ECD_L
 ClientSampleId :



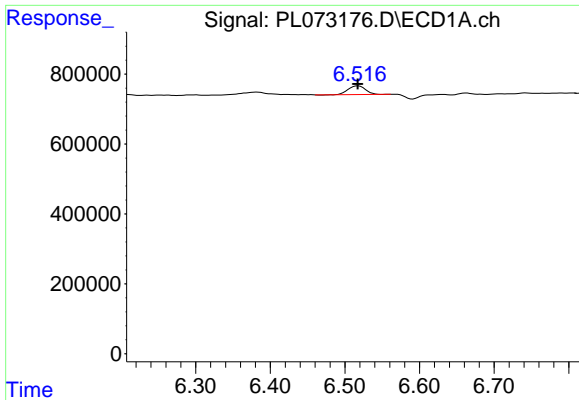
#1 Tetrachloro-m-xylene
 R.T.: 5.493 min
 Delta R.T.: 0.003 min
 Response: 27467357
 Conc: 17.59 ng/ml



#2 alpha-BHC
 R.T.: 0.000 min
 Exp R.T. : 5.355 min
 Response: 0
 Conc: N.D.

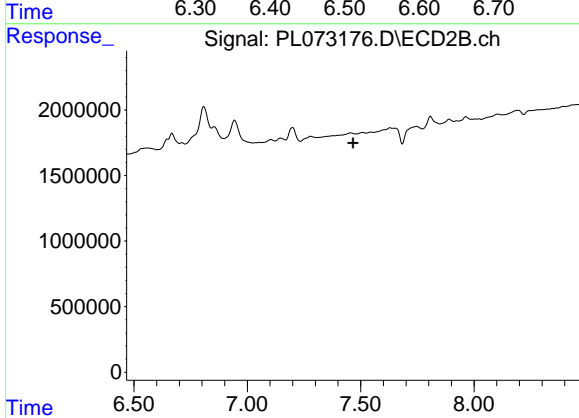


#2 alpha-BHC
 R.T.: 6.028 min
 Delta R.T.: -0.024 min
 Response: 448299
 Conc: 0.23 ng/ml

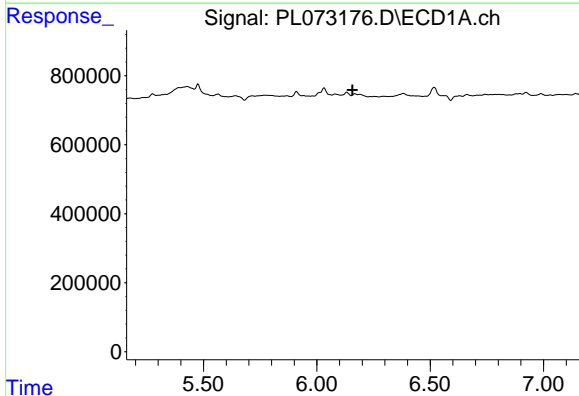


#5 Aldrin
 R.T.: 6.518 min
 Delta R.T.: 0.000 min
 Response: 406823
 Conc: 0.90 ng/ml

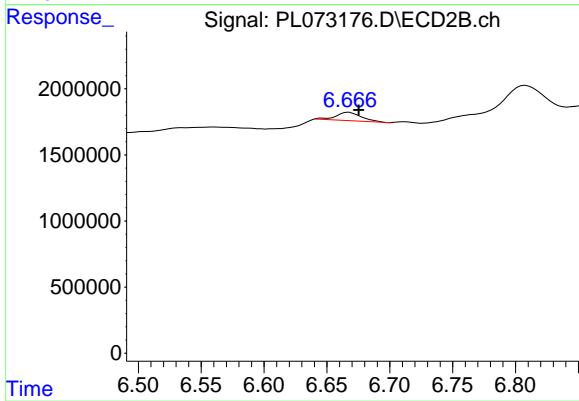
Instrument :
 ECD_L
 ClientSampleId :



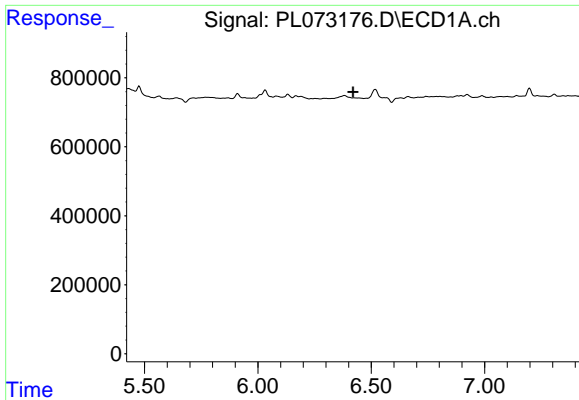
#5 Aldrin
 R.T.: 0.000 min
 Exp R.T. : 7.466 min
 Response: 0
 Conc: N.D.



#6 beta-BHC
 R.T.: 0.000 min
 Exp R.T. : 6.158 min
 Response: 0
 Conc: N.D.



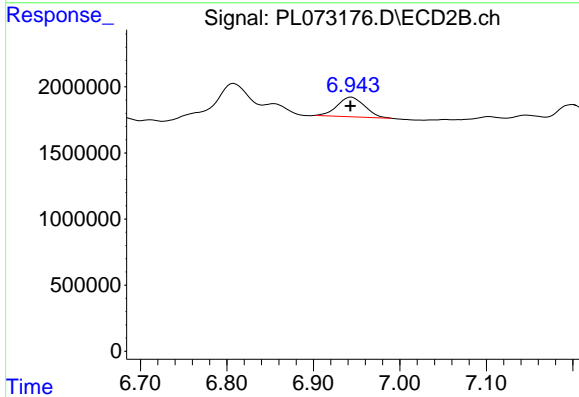
#6 beta-BHC
 R.T.: 6.668 min
 Delta R.T.: -0.008 min
 Response: 870613
 Conc: 0.89 ng/ml



#7 delta-BHC

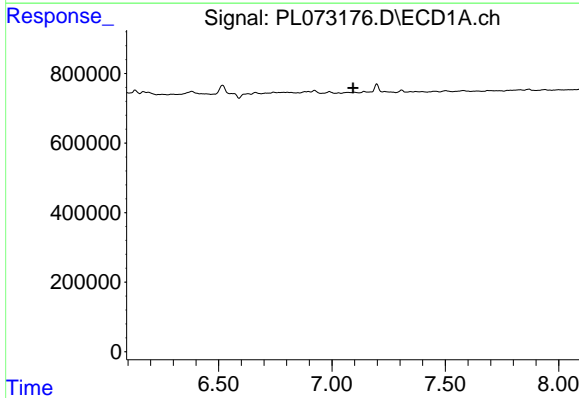
R.T.: 0.000 min
 Exp R.T.: 6.420 min
 Response: 0
 Conc: N.D.

Instrument :
 ECD_L
 ClientSampleId :



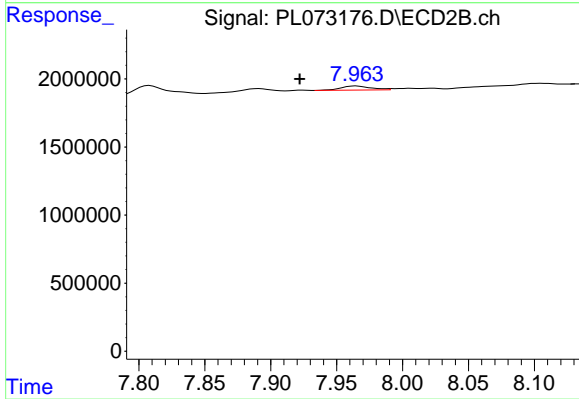
#7 delta-BHC

R.T.: 6.944 min
 Delta R.T.: 0.001 min
 Response: 3228044
 Conc: 1.67 ng/ml



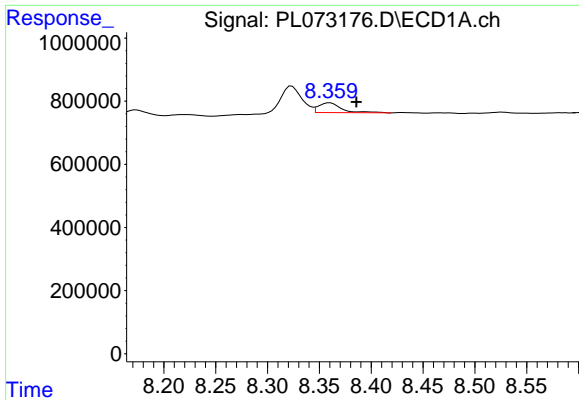
#8 Heptachlor epoxide

R.T.: 0.000 min
 Exp R.T.: 7.094 min
 Response: 0
 Conc: N.D.



#8 Heptachlor epoxide

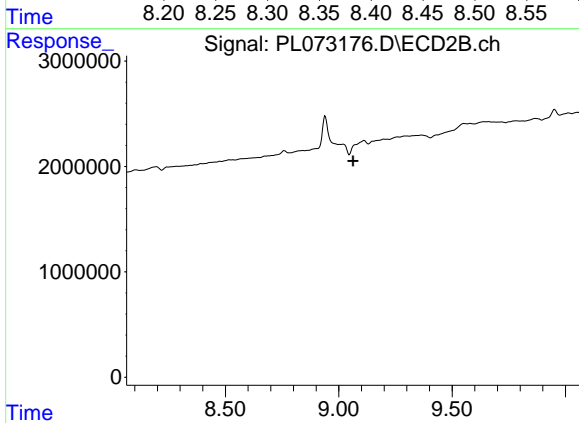
R.T.: 7.965 min
 Delta R.T.: 0.043 min
 Response: 499374
 Conc: 0.29 ng/ml



#15 Endosulfan II

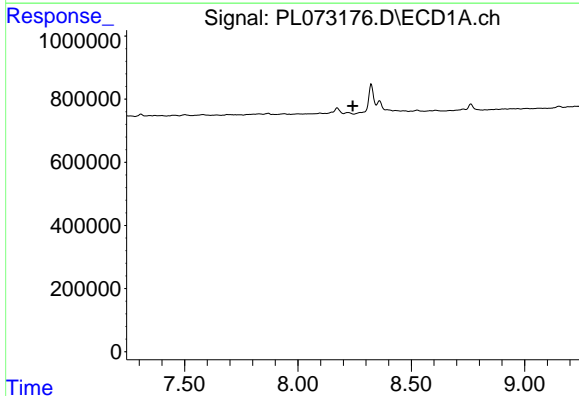
R.T.: 8.360 min
 Delta R.T.: -0.026 min
 Response: 478221
 Conc: 1.02 ng/ml

Instrument :
 ECD_L
 ClientSampleId :



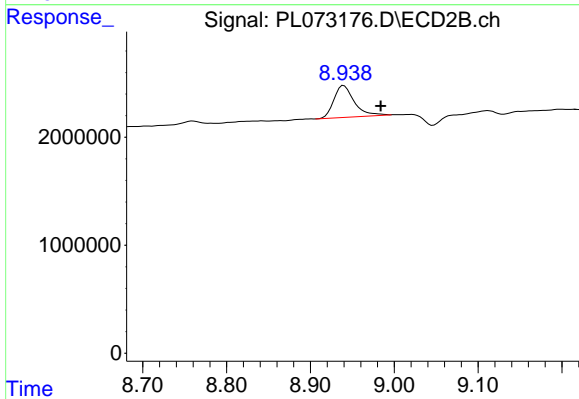
#15 Endosulfan II

R.T.: 0.000 min
 Exp R.T. : 9.064 min
 Response: 0
 Conc: N.D.



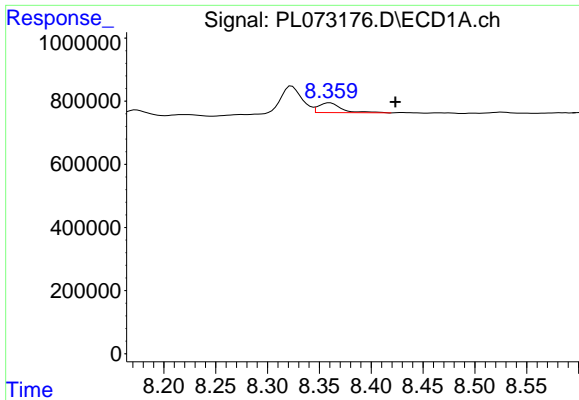
#16 4,4'-DDD

R.T.: 0.000 min
 Exp R.T. : 8.242 min
 Response: 0
 Conc: N.D.



#16 4,4'-DDD

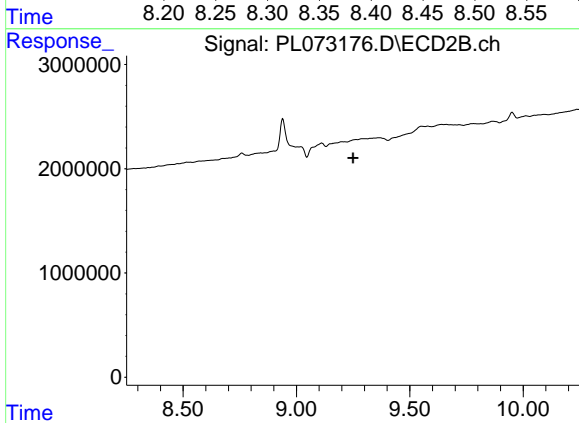
R.T.: 8.940 min
 Delta R.T.: -0.044 min
 Response: 4980933
 Conc: 3.79 ng/ml



#24 Toxaphene-3

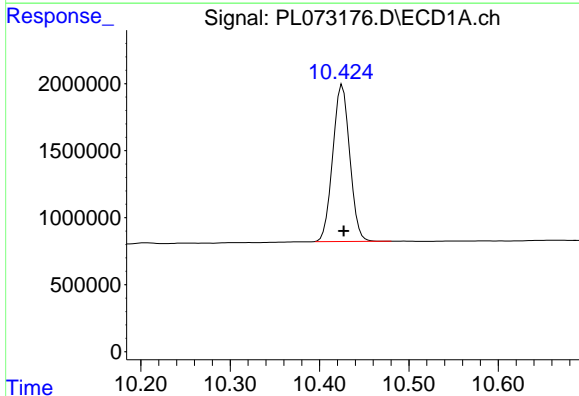
R.T.: 8.360 min
 Delta R.T.: -0.063 min
 Response: 478221
 Conc: 59.10 ng/ml

Instrument :
 ECD_L
 ClientSampleId :



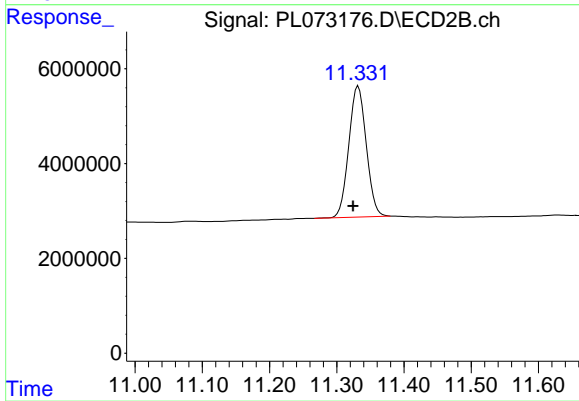
#24 Toxaphene-3

R.T.: 0.000 min
 Exp R.T. : 9.250 min
 Response: 0
 Conc: N.D.



#27 Decachlorobiphenyl

R.T.: 10.426 min
 Delta R.T.: -0.001 min
 Response: 15453801
 Conc: 32.14 ng/ml



#27 Decachlorobiphenyl

R.T.: 11.332 min
 Delta R.T.: 0.008 min
 Response: 49800160
 Conc: 30.81 ng/ml