

Data Path : Z:\pestpcbsrv\HPCHEM1\ECD\_L\Data\PL030722\  
 Data File : PL073182.D  
 Signal(s) : Signal #1: ECD1A.ch Signal #2: ECD2B.ch  
 Acq On : 07 Mar 2022 16:06  
 Operator : AR\AJ  
 Sample : PIBLK241  
 Misc :  
 ALS Vial : 2 Sample Multiplier: 1

Instrument :  
 ECD\_L  
 ClientSampleId :

Integration File signal 1: autoint1.e  
 Integration File signal 2: autoint2.e  
 Quant Time: Mar 08 04:51:20 2022  
 Quant Method : Z:\pestpcbsrv\HPCHEM1\ECD\_L\methods\PL022522CLP.M  
 Quant Title : GC Extractables  
 QLast Update : Tue Mar 01 01:47:07 2022  
 Response via : Initial Calibration  
 Integrator: ChemStation

Volume Inj. : 1 µl  
 Signal #1 Phase : ZB-MR2 Signal #2 Phase: ZB-MR1  
 Signal #1 Info : 30M x 0.32mm x0.2 Signal #2 Info : 30M x 0.32mm x 0.50µm

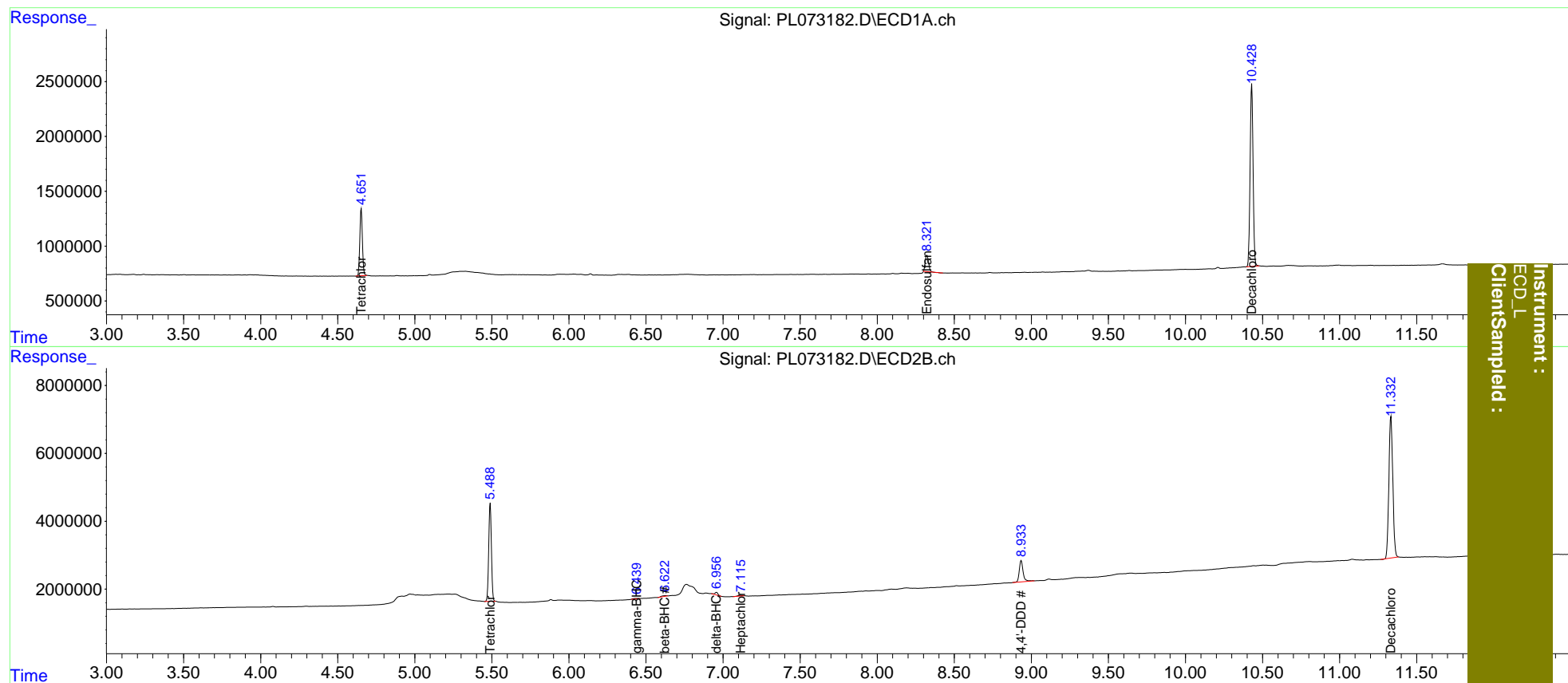
	Compound	RT#1	RT#2	Resp#1	Resp#2	ng/ml	ng/ml
-----							
System Monitoring Compounds							
1)	SA Tetrachlo...	4.652	5.489	7115980	35337978	20.692	22.636
27)	SA Decachlor...	10.430	11.333	22326782	73693811	46.435	45.594
Target Compounds							
3)	MA gamma-BHC...	0.000	6.440	0	316993	N.D.	0.167
4)	MA Heptachlor	0.000	7.116	0	361640	N.D.	0.178
6)	B beta-BHC	0.000	6.626f	0	514586	N.D.	0.526
7)	B delta-BHC	0.000	6.957	0	1019440	N.D.	0.527
15)	B Endosulfa...	8.323f	0.000	2241127	0	4.783	N.D. #
16)	A 4,4'-DDD	0.000	8.934f	0	11013265	N.D.	8.386
-----							

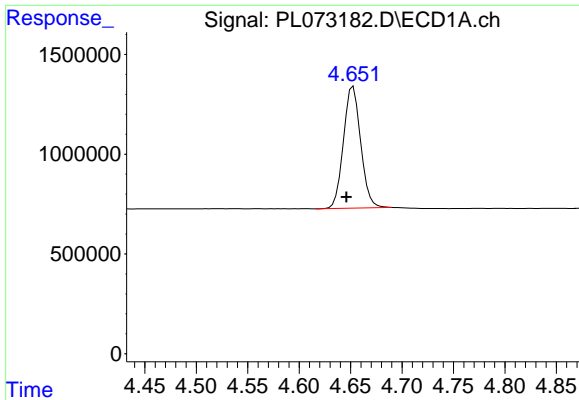
(f)=RT Delta > 1/2 Window (#)=Amounts differ by > 25% (m)=manual int.

Data Path : Z:\pestpcbsrv\HPCHEM1\ECD\_L\Data\PL073182\  
 Data File : PL073182.D  
 Signal(s) : Signal #1: ECD1A.ch Signal #2: ECD2B.ch  
 Acq On : 07 Mar 2022 16:06  
 Operator : AR\AJ  
 Sample : PIBLK241  
 Misc :  
 ALS Vial : 2 Sample Multiplier: 1

Integration File signal 1: autoint1.e  
 Integration File signal 2: autoint2.e  
 Quant Time: Mar 08 04:51:20 2022  
 Quant Method : Z:\pestpcbsrv\HPCHEM1\ECD\_L\methods\PL022522CLP.M  
 Quant Title : GC Extractables  
 QLast Update : Tue Mar 01 01:47:07 2022  
 Response via : Initial Calibration  
 Integrator: ChemStation

Volume Inj. : 1 µl  
 Signal #1 Phase : ZB-MR2 Signal #2 Phase: ZB-MR1  
 Signal #1 Info : 30M x 0.32mm x0.2 Signal #2 Info : 30M x 0.32mm x 0.50µm

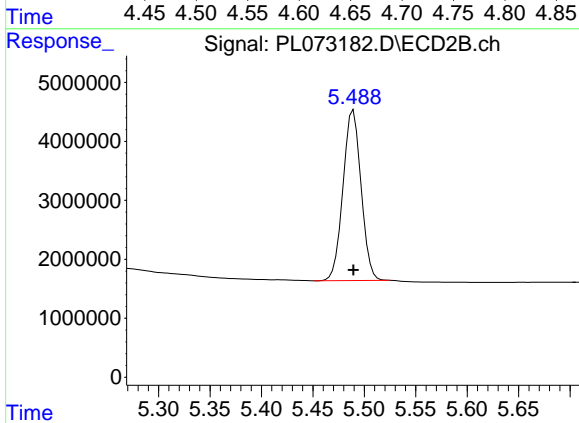




#1 Tetrachloro-m-xylene

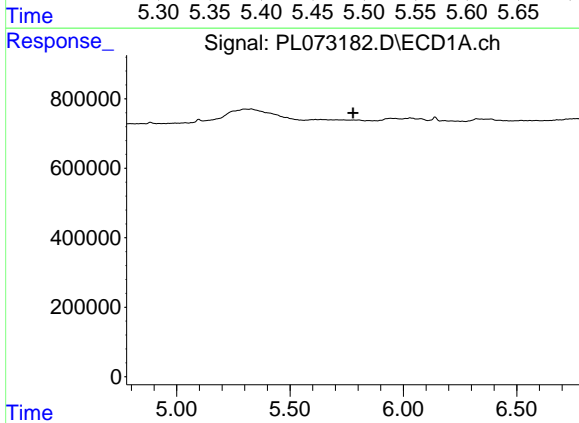
R.T.: 4.652 min  
 Delta R.T.: 0.006 min  
 Response: 7115980  
 Conc: 20.69 ng/ml

Instrument :  
 ECD\_L  
 ClientSampleId :



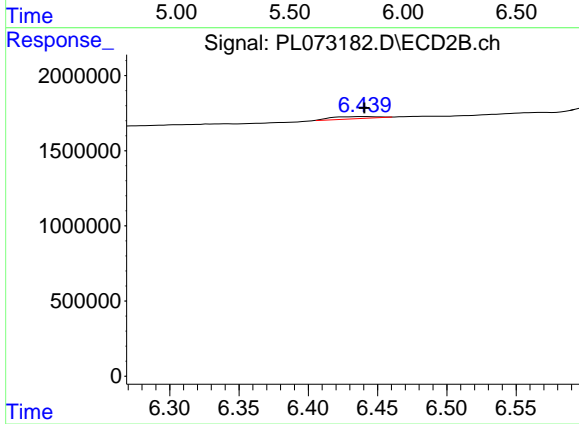
#1 Tetrachloro-m-xylene

R.T.: 5.489 min  
 Delta R.T.: 0.000 min  
 Response: 35337978  
 Conc: 22.64 ng/ml



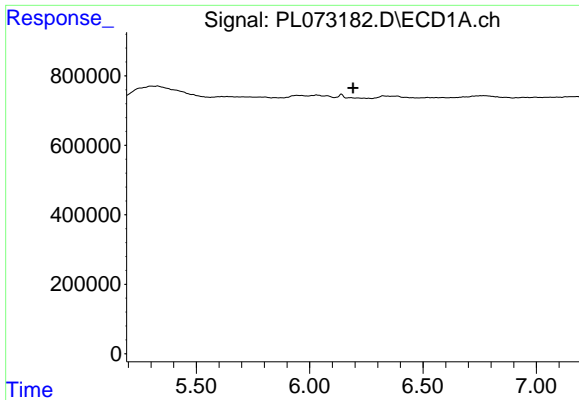
#3 gamma-BHC (Lindane)

R.T.: 0.000 min  
 Exp R.T. : 5.778 min  
 Response: 0  
 Conc: N.D.



#3 gamma-BHC (Lindane)

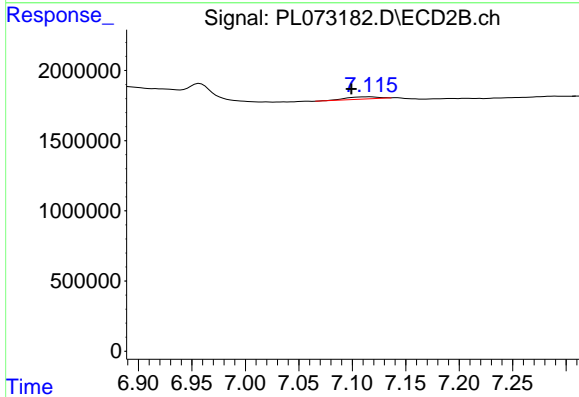
R.T.: 6.440 min  
 Delta R.T.: 0.000 min  
 Response: 316993  
 Conc: 0.17 ng/ml



#4 Heptachlor

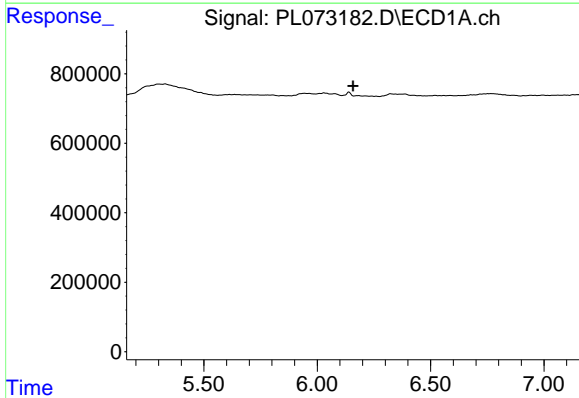
R.T.: 0.000 min  
 Exp R.T. : 6.192 min  
 Response: 0  
 Conc: N.D.

Instrument :  
 ECD\_L  
 ClientSampleId :



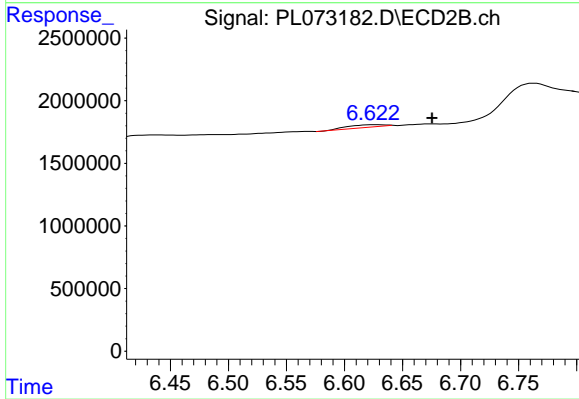
#4 Heptachlor

R.T.: 7.116 min  
 Delta R.T.: 0.017 min  
 Response: 361640  
 Conc: 0.18 ng/ml



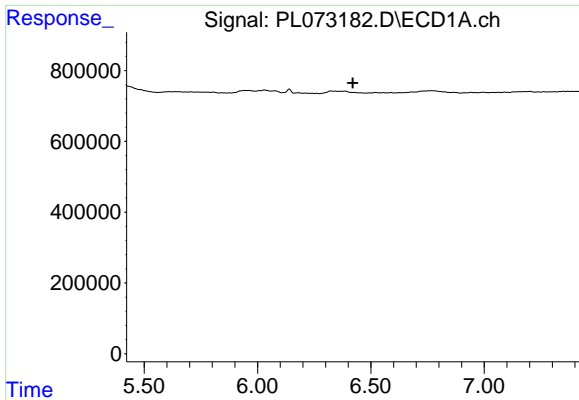
#6 beta-BHC

R.T.: 0.000 min  
 Exp R.T. : 6.158 min  
 Response: 0  
 Conc: N.D.



#6 beta-BHC

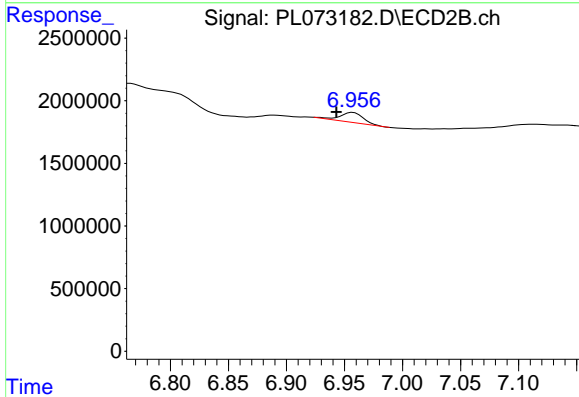
R.T.: 6.626 min  
 Delta R.T.: -0.049 min  
 Response: 514586  
 Conc: 0.53 ng/ml



#7 delta-BHC

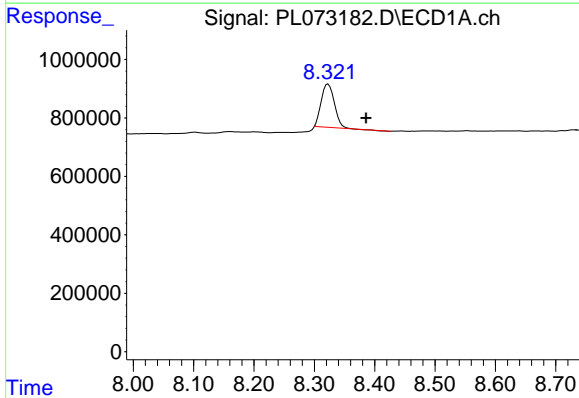
R.T.: 0.000 min  
 Exp R.T.: 6.420 min  
 Response: 0  
 Conc: N.D.

Instrument :  
 ECD\_L  
 ClientSampleId :



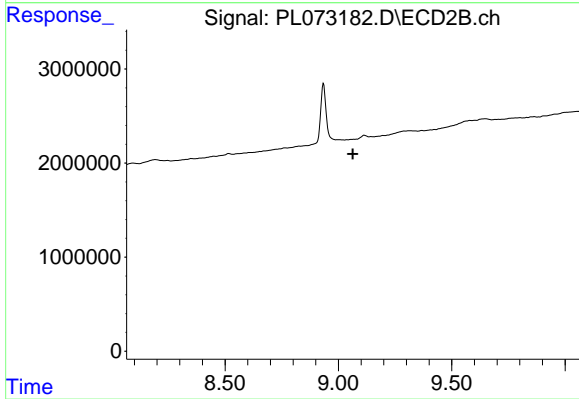
#7 delta-BHC

R.T.: 6.957 min  
 Delta R.T.: 0.014 min  
 Response: 1019440  
 Conc: 0.53 ng/ml



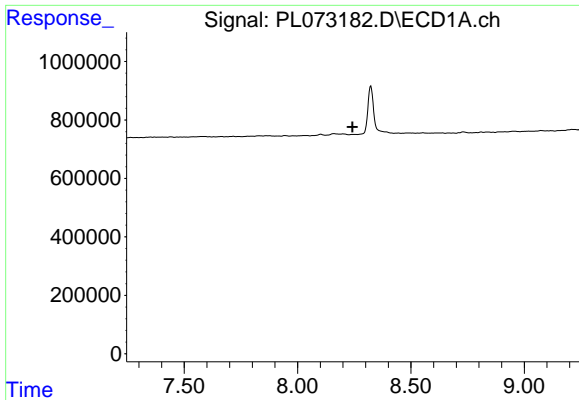
#15 Endosulfan II

R.T.: 8.323 min  
 Delta R.T.: -0.063 min  
 Response: 2241127  
 Conc: 4.78 ng/ml



#15 Endosulfan II

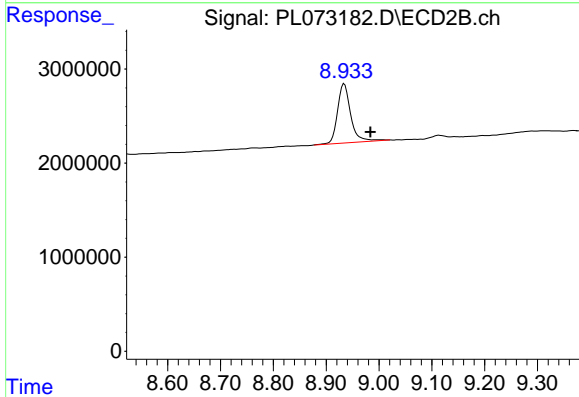
R.T.: 0.000 min  
 Exp R.T.: 9.064 min  
 Response: 0  
 Conc: N.D.



#16 4,4'-DDD

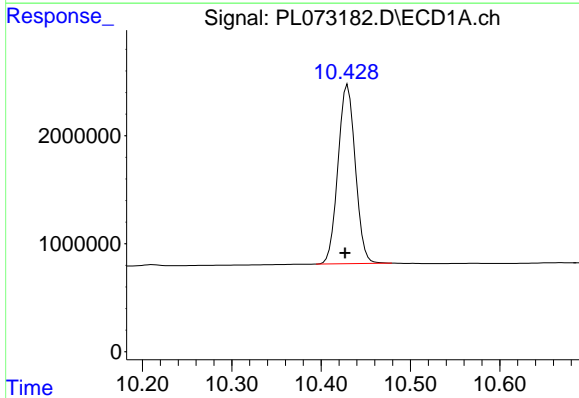
R.T.: 0.000 min  
 Exp R.T.: 8.242 min  
 Response: 0  
 Conc: N.D.

Instrument :  
 ECD\_L  
 ClientSampleId :



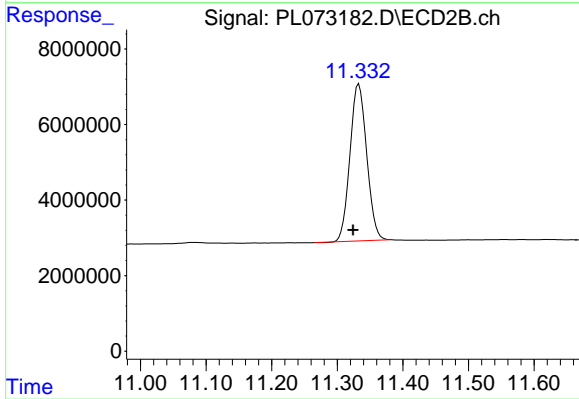
#16 4,4'-DDD

R.T.: 8.934 min  
 Delta R.T.: -0.050 min  
 Response: 11013265  
 Conc: 8.39 ng/ml



#27 Decachlorobiphenyl

R.T.: 10.430 min  
 Delta R.T.: 0.003 min  
 Response: 22326782  
 Conc: 46.44 ng/ml



#27 Decachlorobiphenyl

R.T.: 11.333 min  
 Delta R.T.: 0.009 min  
 Response: 73693811  
 Conc: 45.59 ng/ml